

Agisoft PhotoScan

Processing Report
06 November 2014



Survey Data

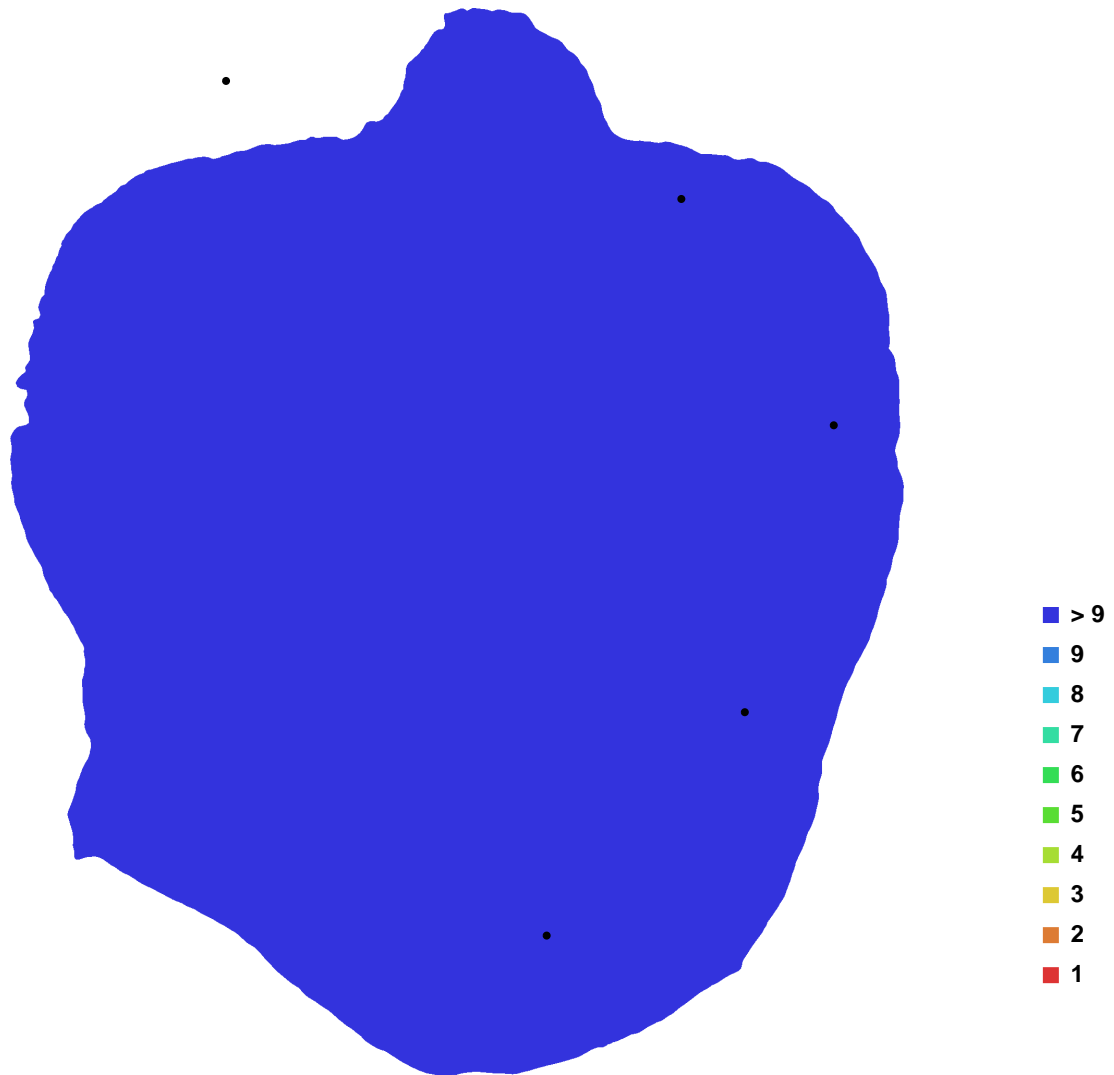


Fig. 1. Camera locations and image overlap.

Number of images:	16	Camera stations:	14
Flying altitude:	2.73182 m	Tie-points:	44901
Ground resolution:	0.000377071 m/pix	Projections:	113638
Coverage area:	7.24737e-007 sq km	Error:	0.973034 pix

Camera Model	Resolution	Focal Length	Pixel Size	Precalibrated
Canon EOS M (18 mm)	5184 x 3456	18 mm	4.384 x 4.384 um	No

Table. 1. Cameras.

Digital Elevation Model

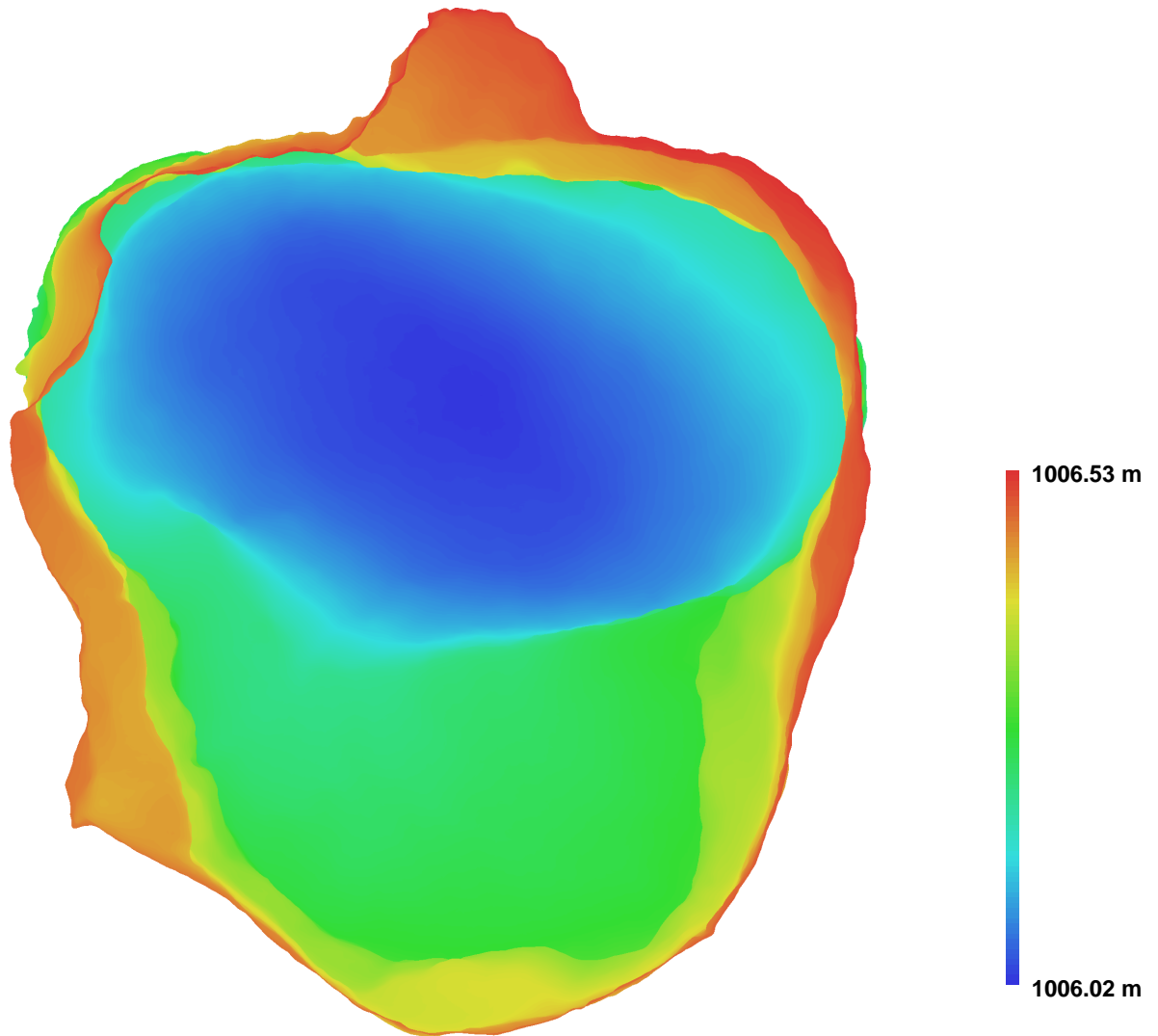


Fig. 2. Reconstructed digital elevation model.

Resolution: 0.00150828 m/pix
Point density: 439576 points per sq m