

*Report and Index of
Underway Marine Geophysical Data*

California Current Studies

Leg 02

(CSIO02RR)

R/V Roger Revelle

(Issued Feb 2005)

Ports:

San Diego, Ca (02-Nov-04)

to

San Diego, Ca (19-Nov-04)

Chief Scientist: Ralf Goericke
Scripps Institution of Oceanography
rgoericke@ucsd.edu

Computer Tech - Barry Quiel
Resident Tech - Cambria Colt

Post-Cruise processing and report preparation by the
Shipboard Technical Support Group,
Scripps Institution of Oceanography
La Jolla, CA 92093-0223

Note: *This is an index of underway geophysical data edited and processed after the completion of the leg and is intended primarily for informal use within the institution. This document is not to be reproduced or distributed outside Scripps without prior approval of the chief scientist or Shipboard Technical Support, Scripps Institution of Oceanography, La Jolla, California 92093-0223*

STS Cruise ID#304

Report and index of Navigation and Underway Geophysical Data

Contents:

Index Chart - give track of cruise leg, dates, ports.

Track Charts - annotated with dates and hour ticks.

Profiles - depth, magnetic and gravity free air anomaly vs. distance.

Sample Index - list of begin/end times and positions of all underway records as well as samples and measurements from other disciplines collected on the leg.

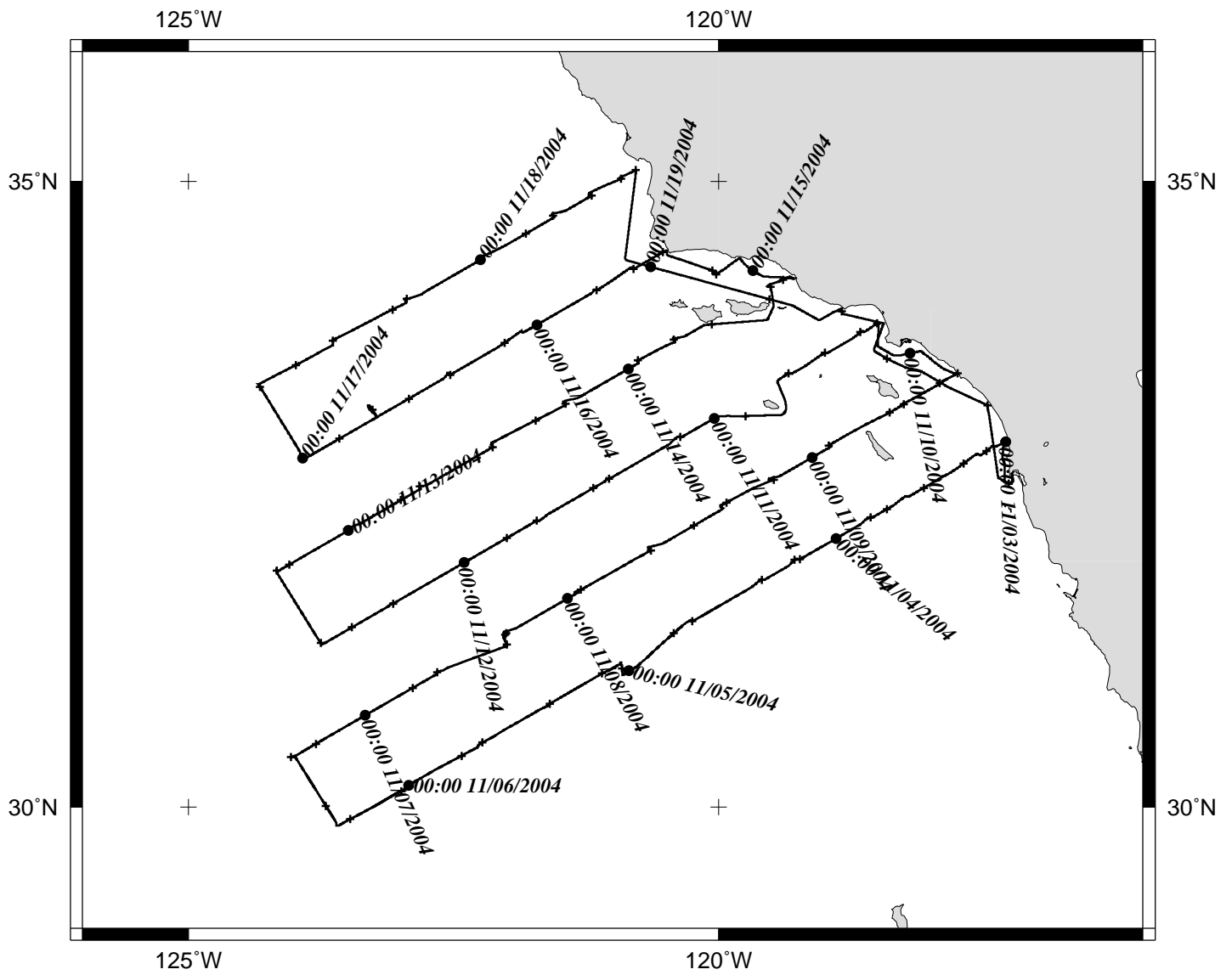
Note:

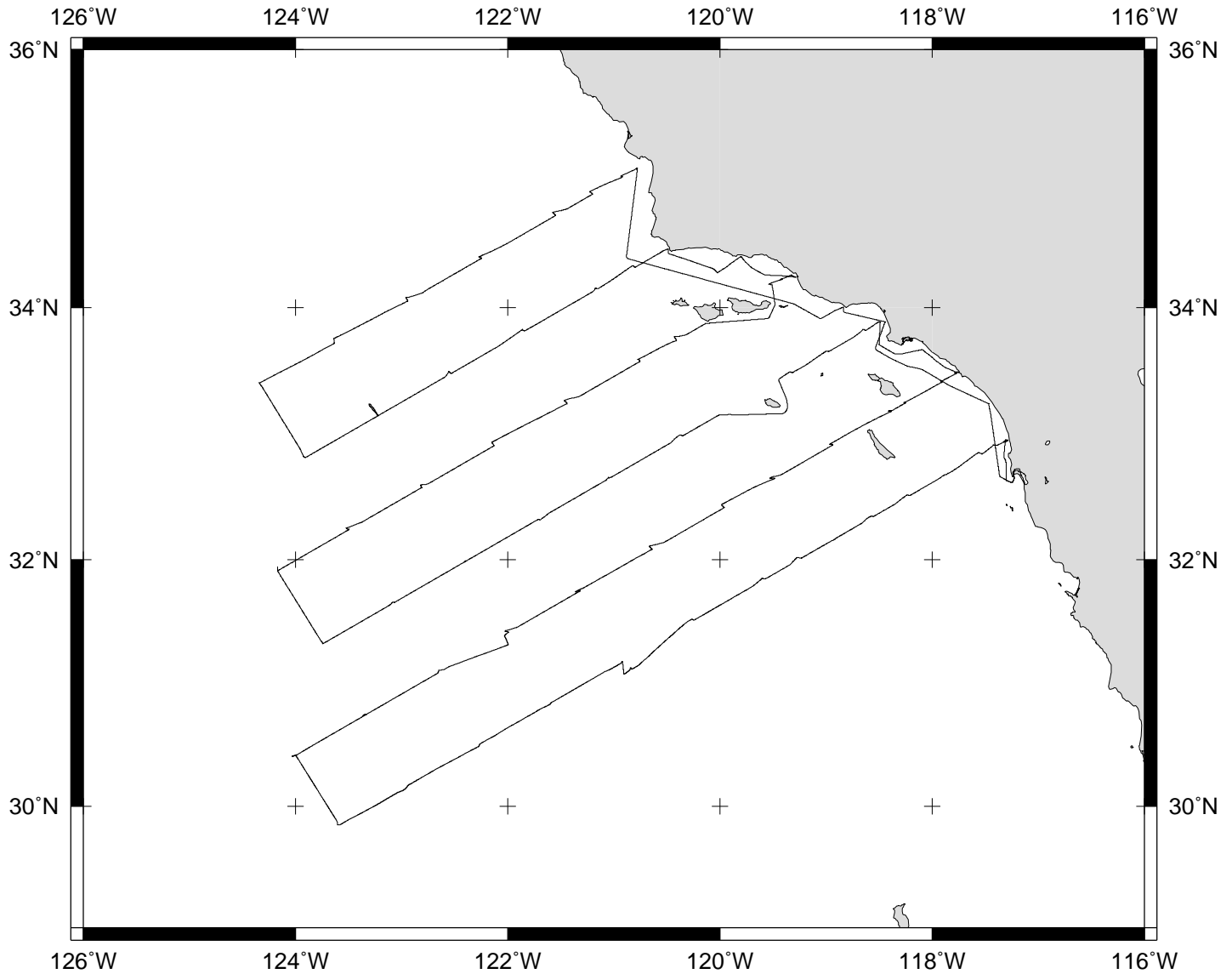
For information on the availability of this current digital data as well as archived digital data contact:

Stephen P. Miller
Geological Data Center
Scripps Institution of Oceanography
La Jolla, California 92093-0220
Phone: (858) 534-1898
Internet email: spmiller@ucsd.edu; or his website: <http://SIOExplorer@ucsd.edu>

Rev 05/2002

CSIO02RR





CSIO02RR EXPEDITION LEG 2 (SIO02RR)

=====

CHIEF SCIENTIST: Ralf Goericke, Scripps Institution

PORTS: San Diego - San Diego, California

DATES: 2 - 19 November 2004

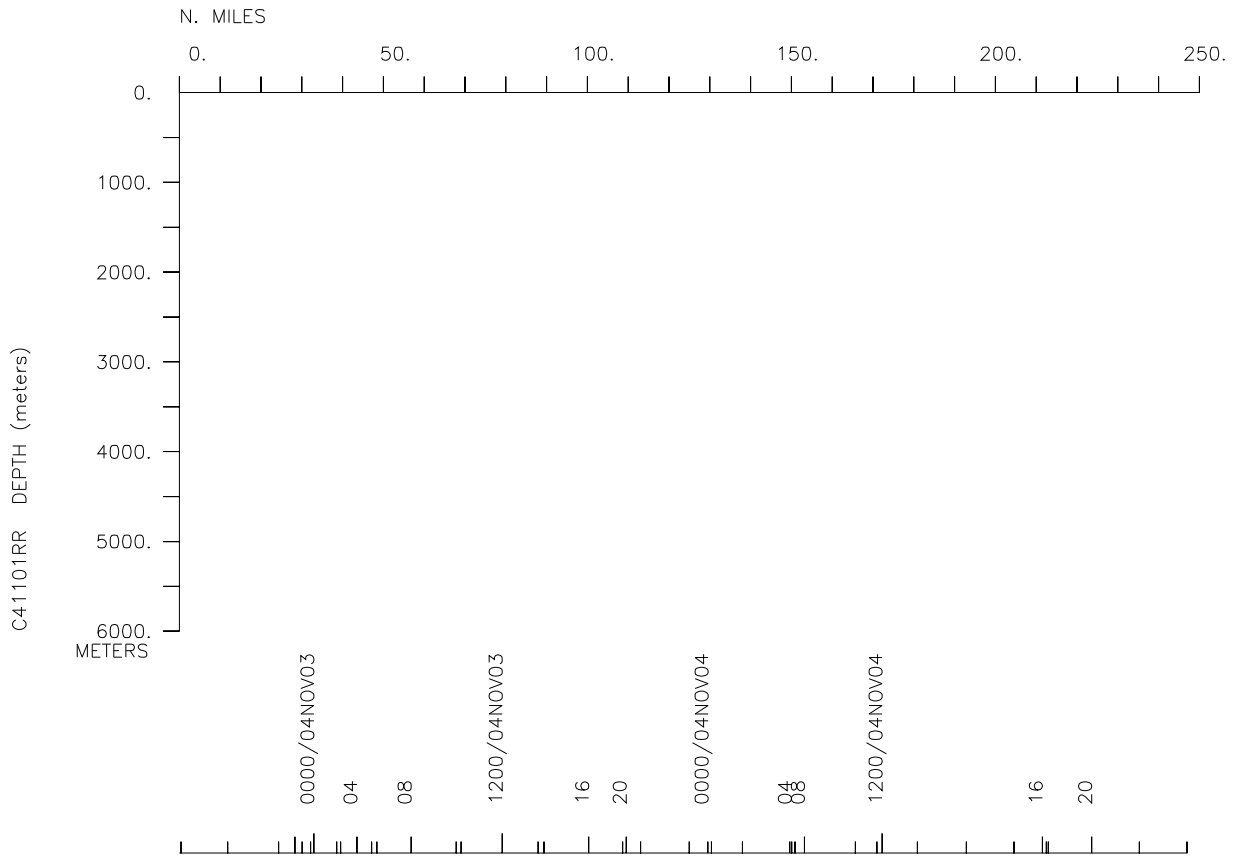
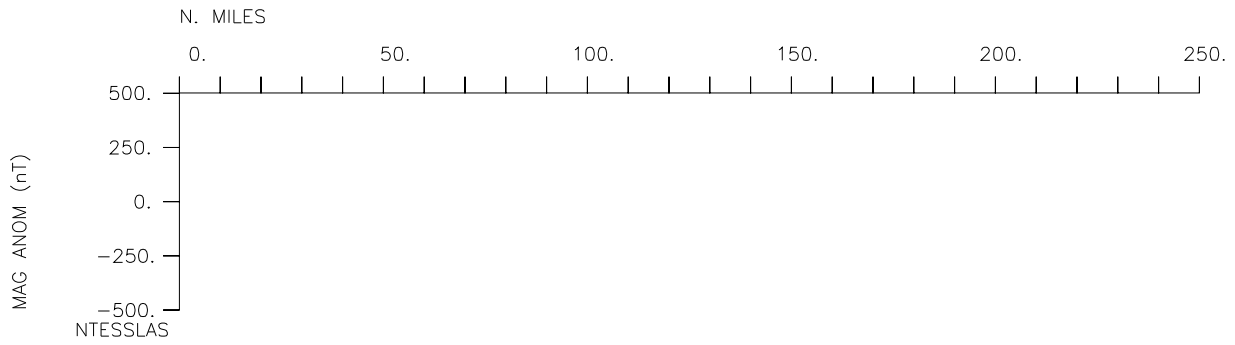
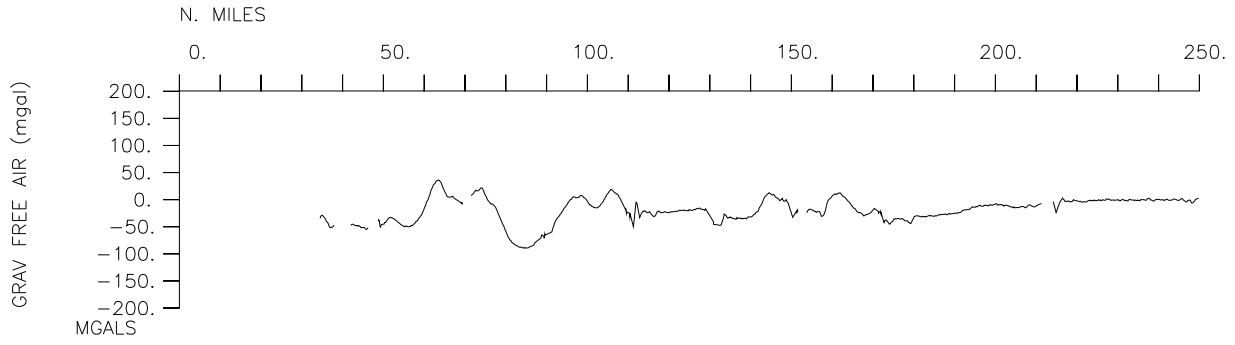
SHIP: R/V Revelle

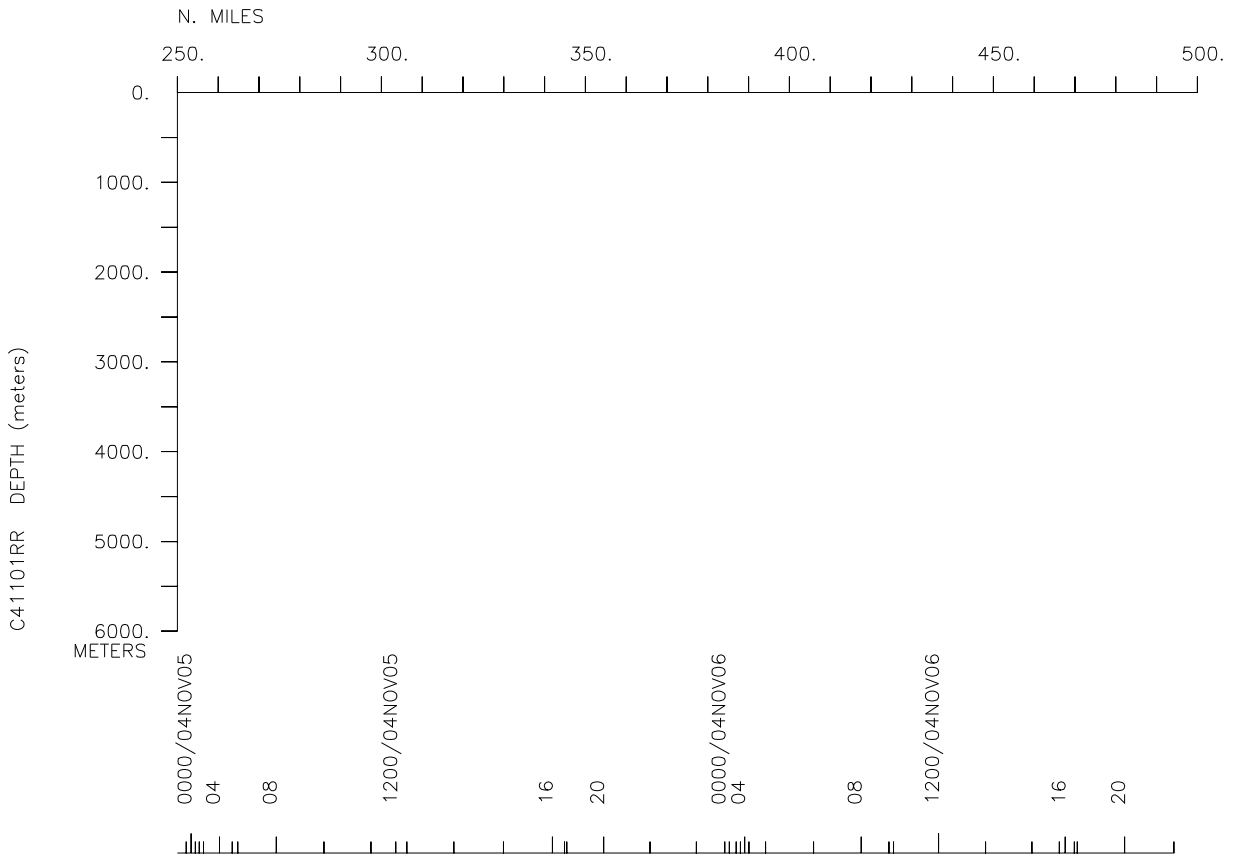
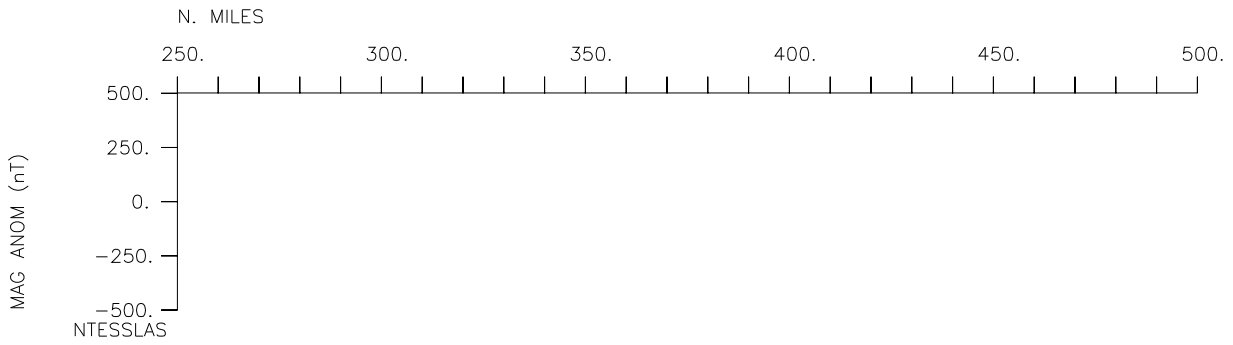
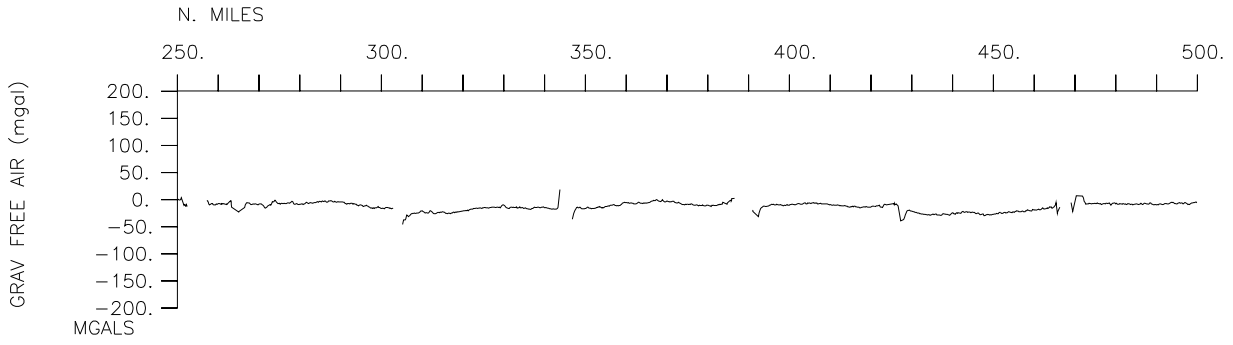
TOTAL MILEAGE OF UNDERWAY DATA COLLECTED

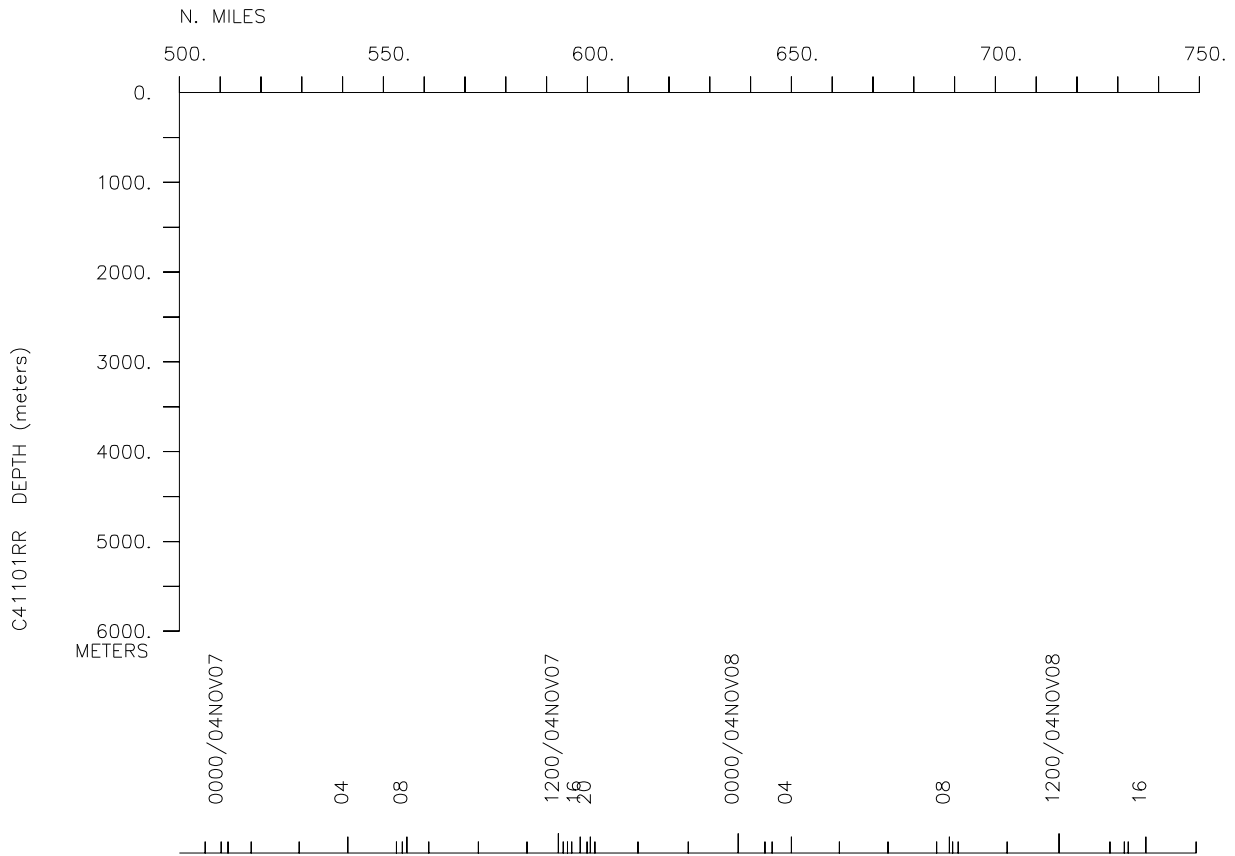
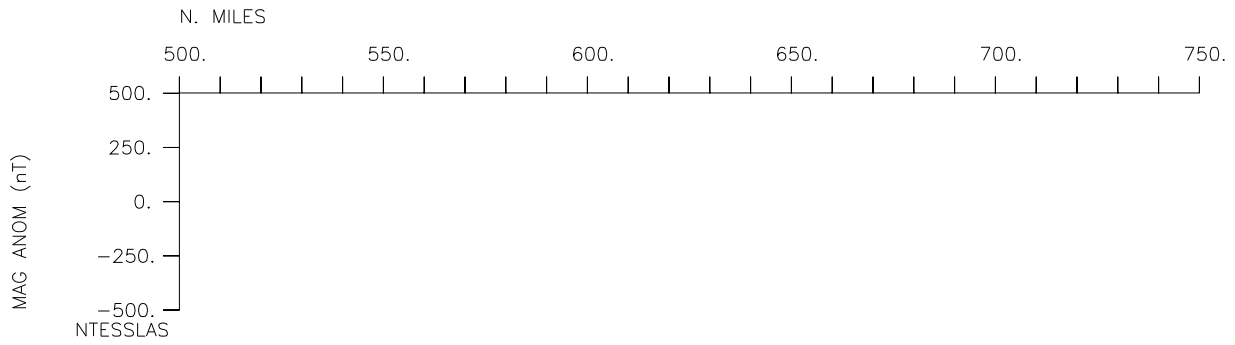
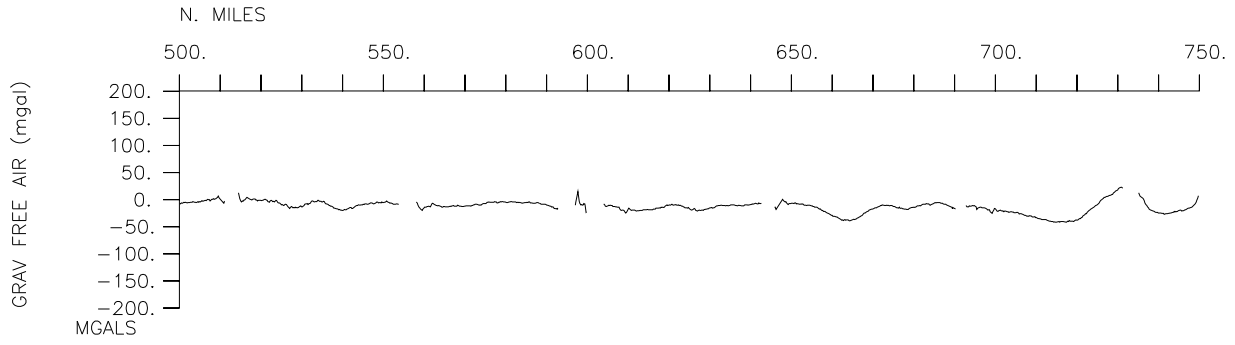
Cruise-2462 miles Magnetics-none collected

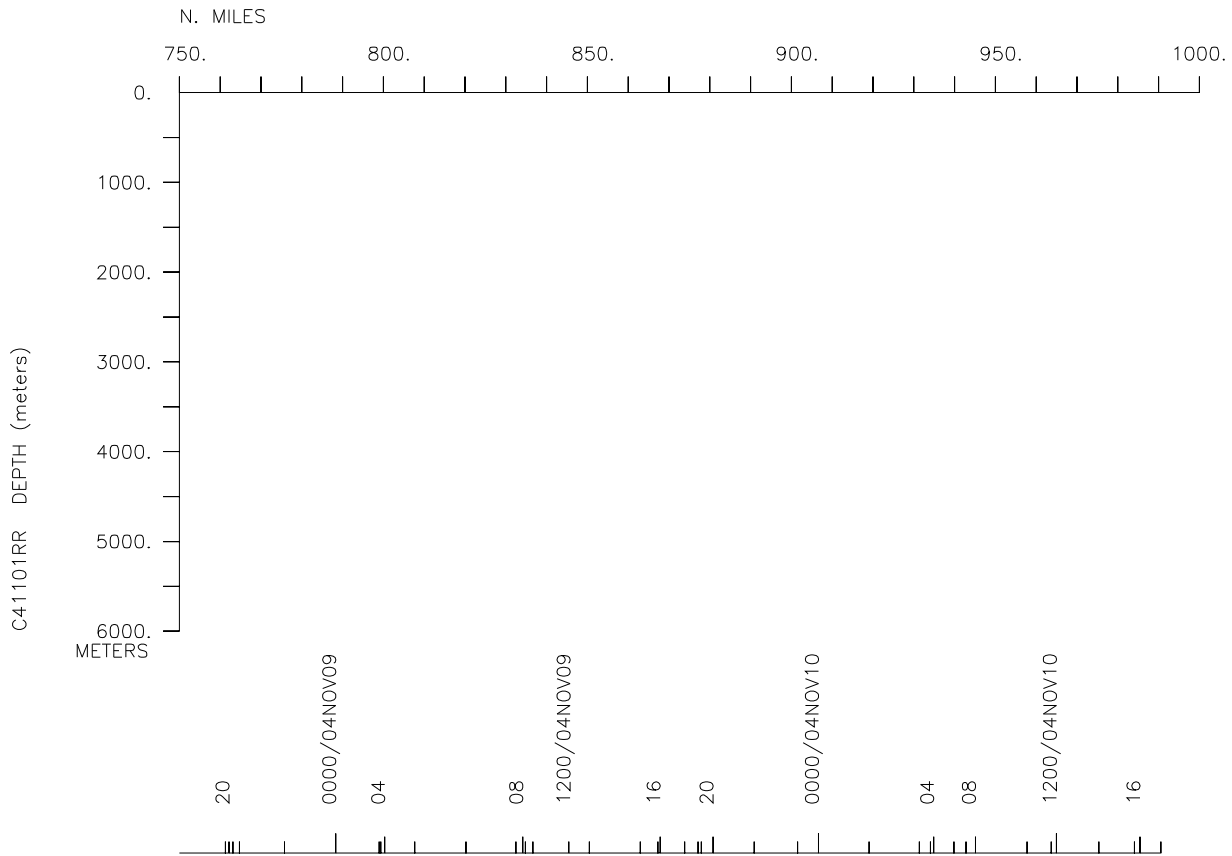
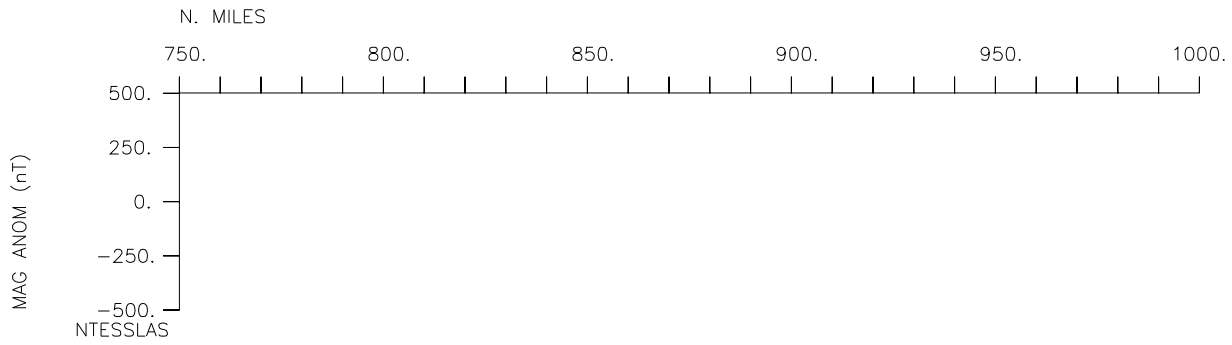
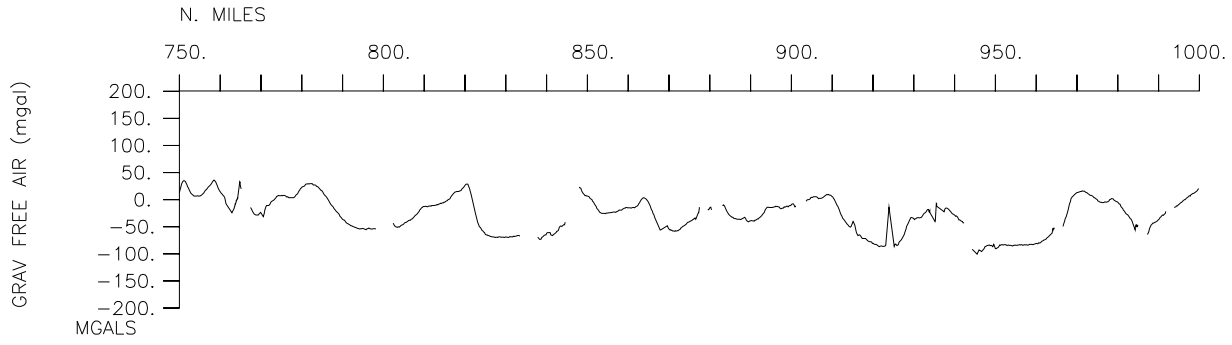
Bathymetry-none collected Seismic Reflection-none collected

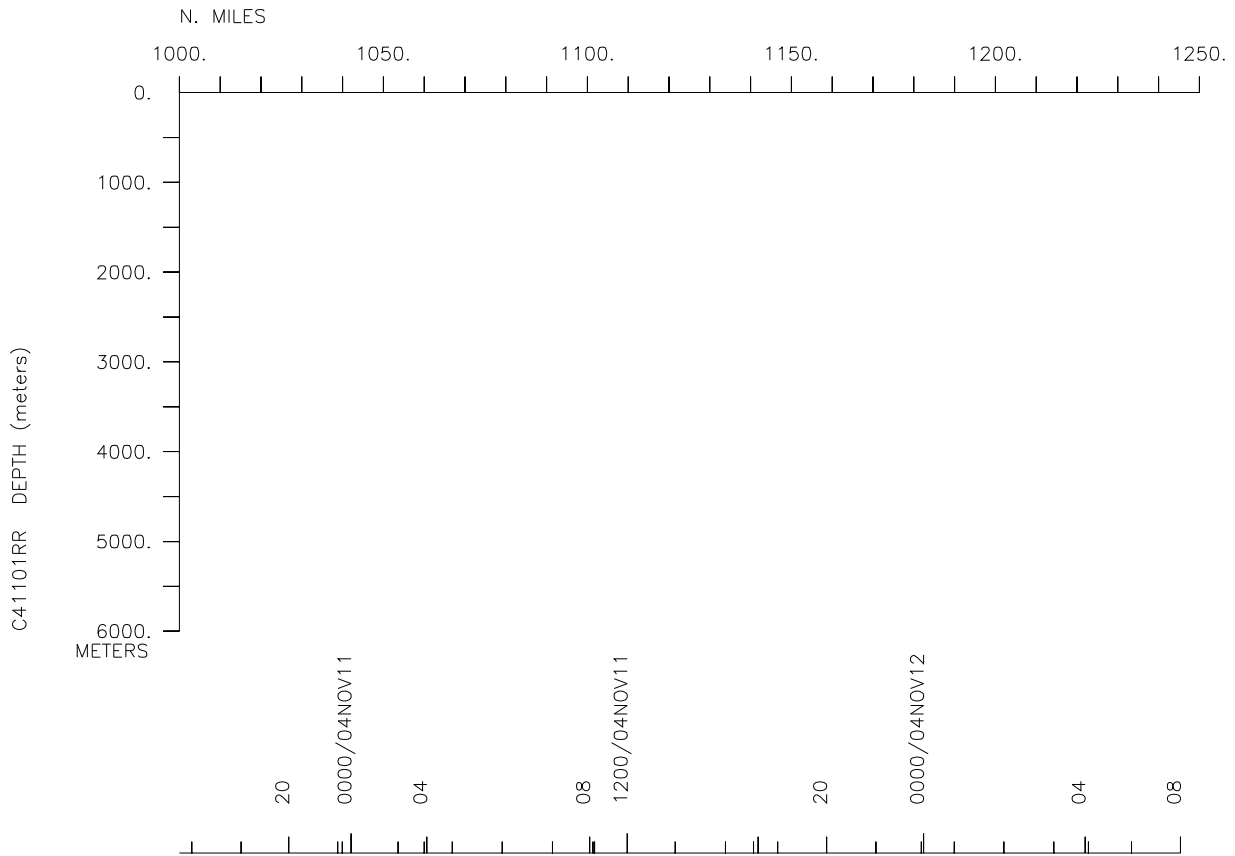
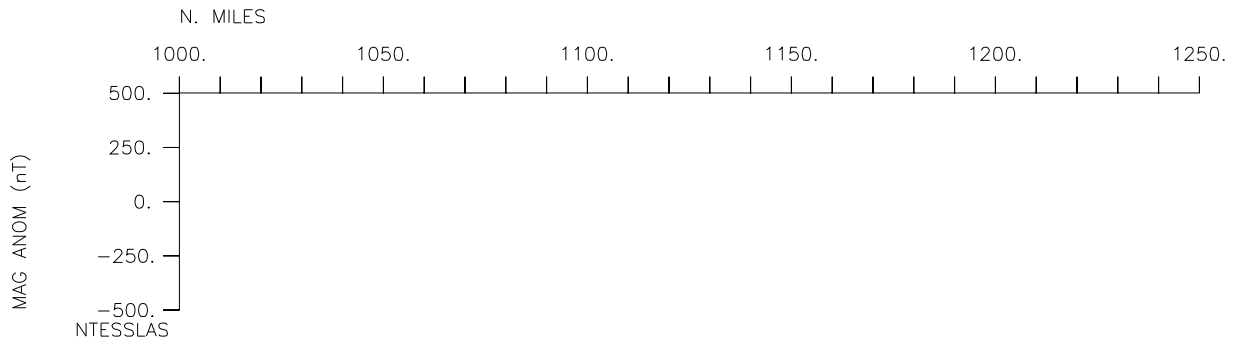
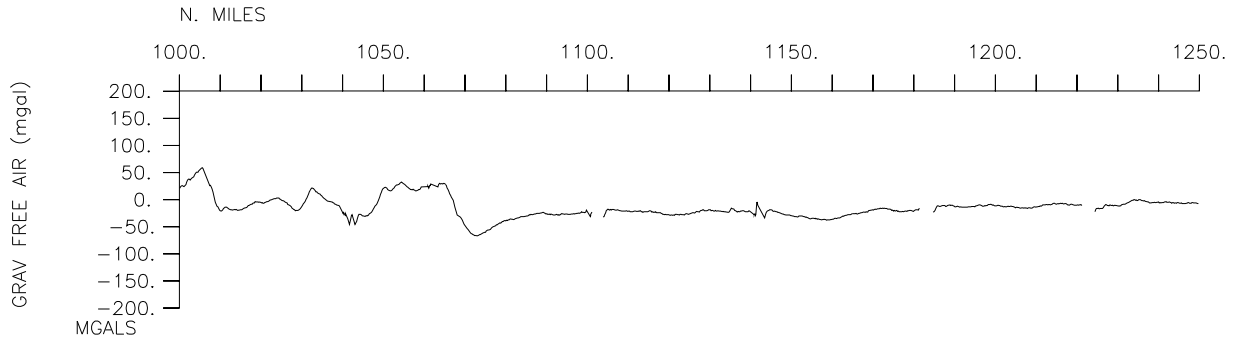
Multibeam-none collected Gravity-2462 miles

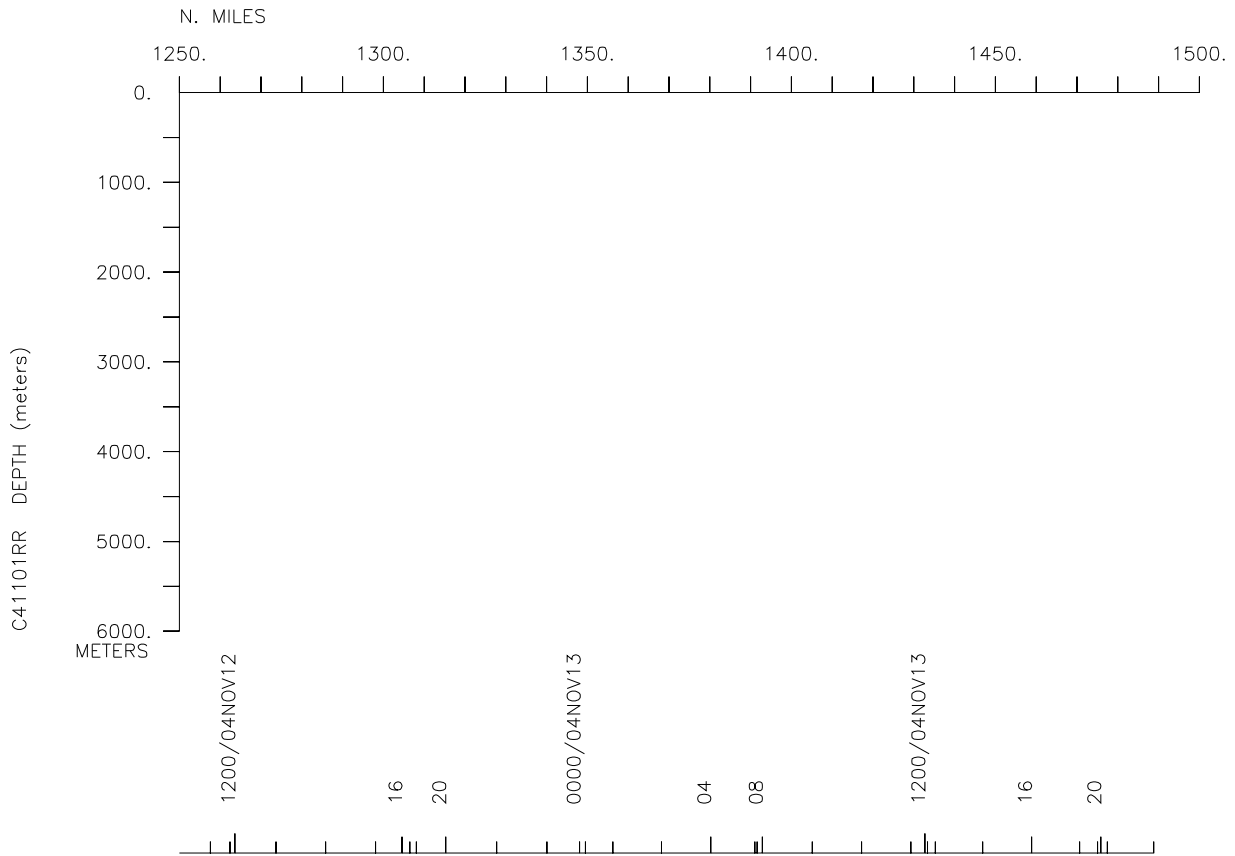
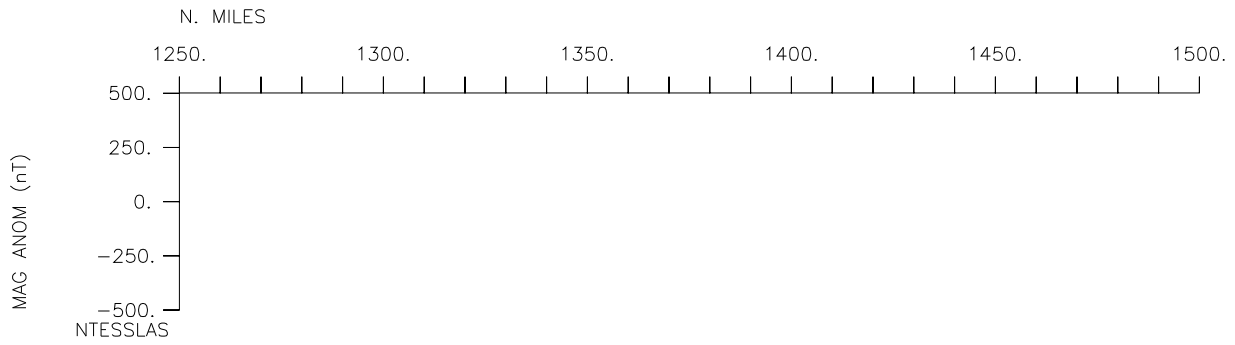
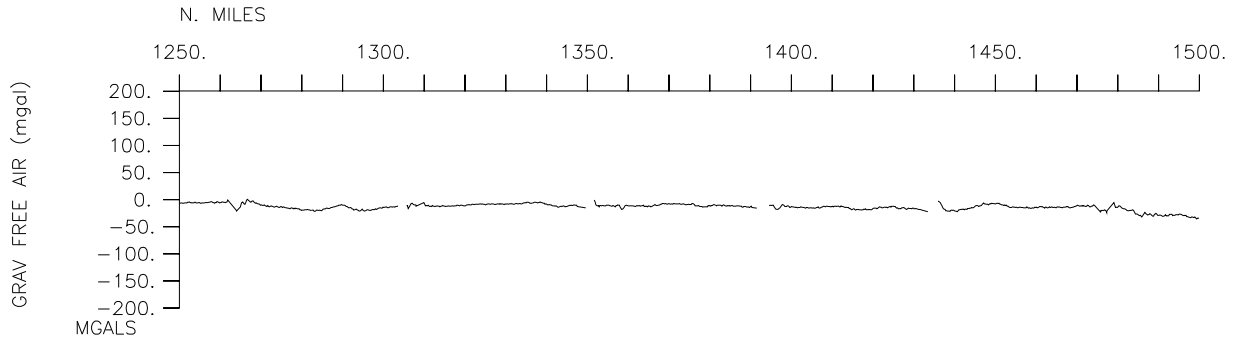


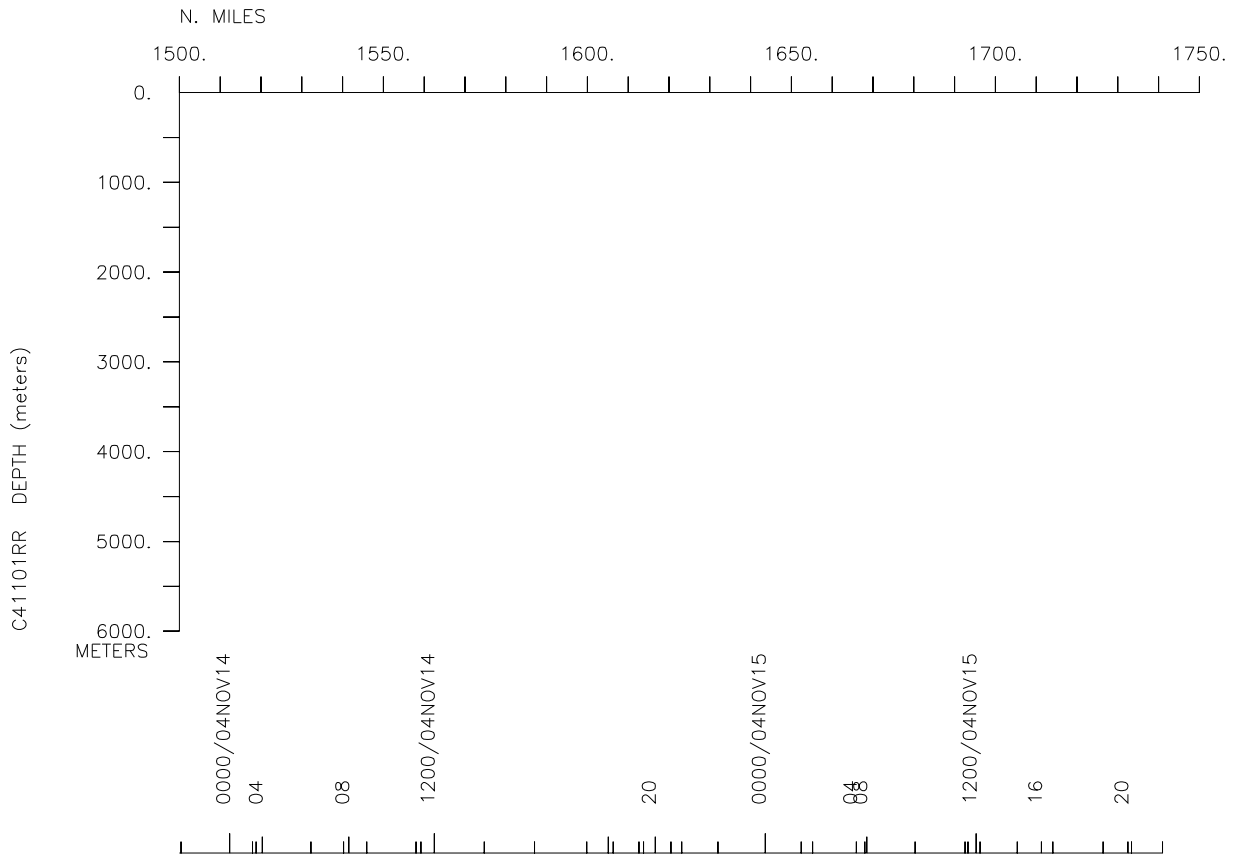
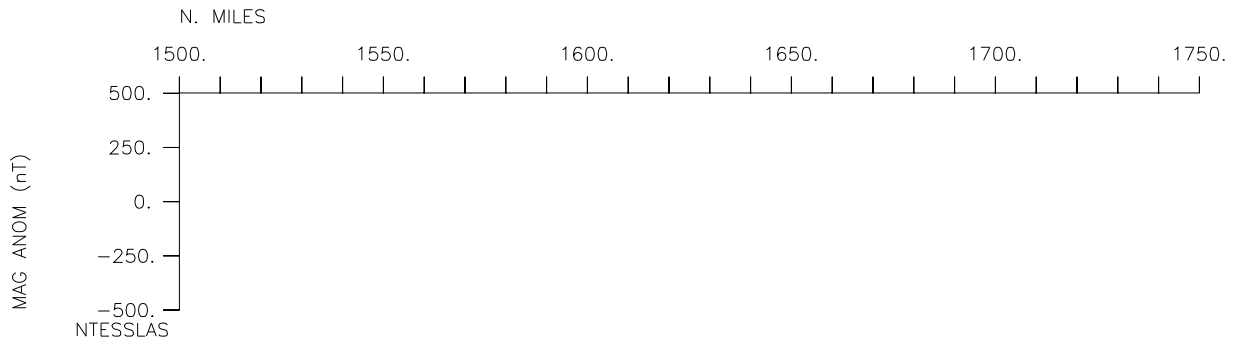
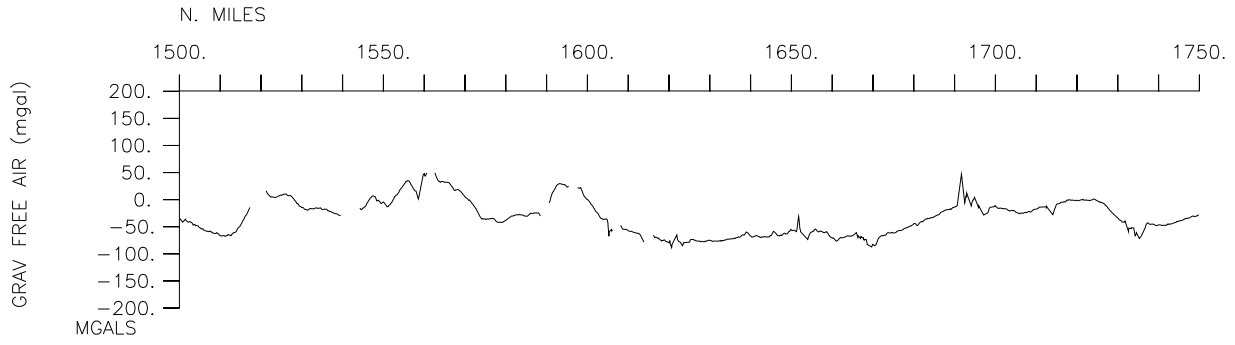


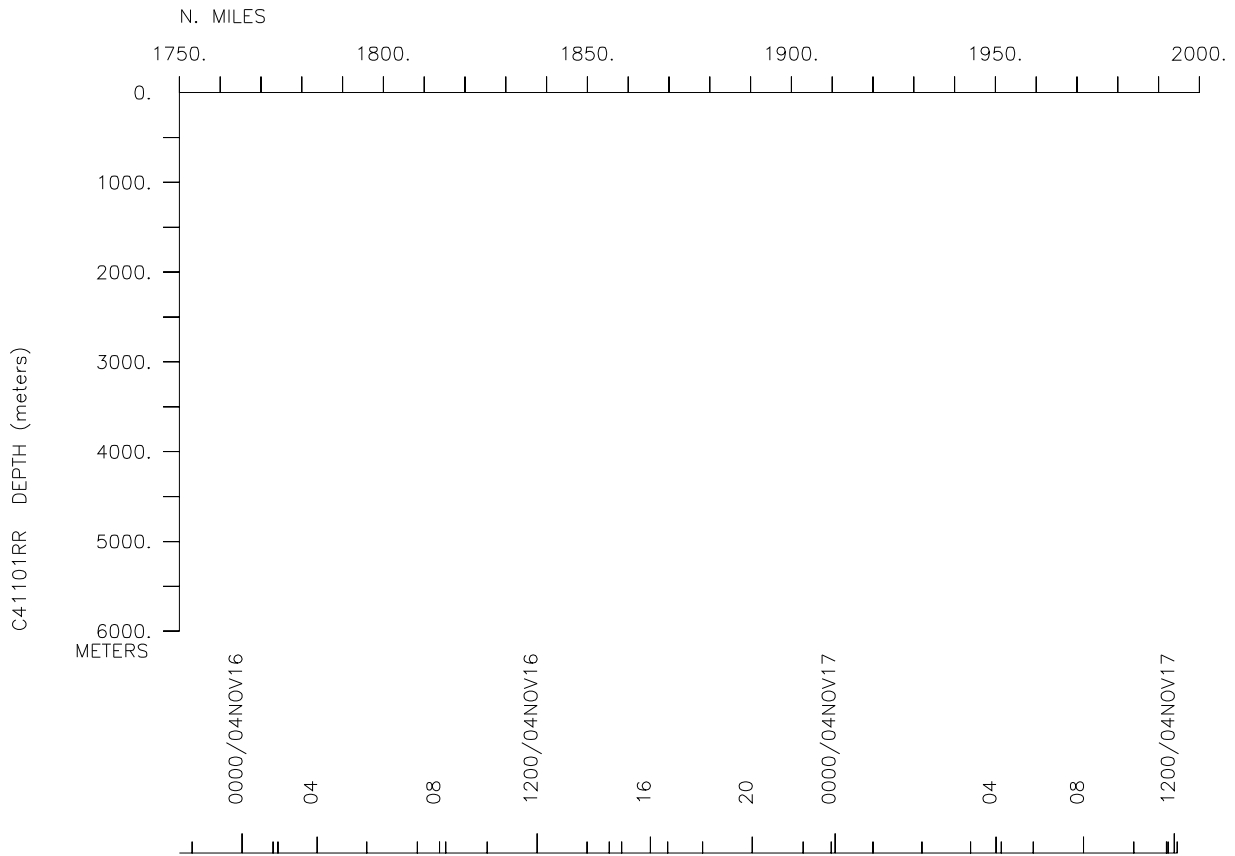
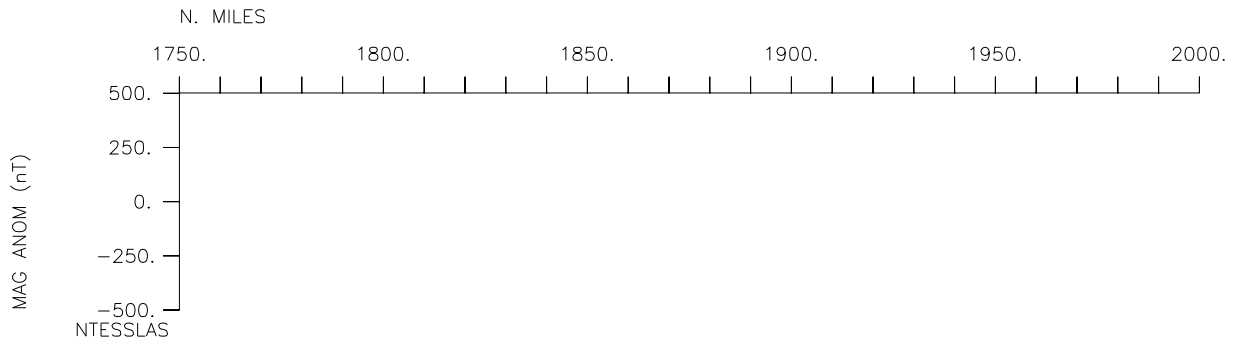
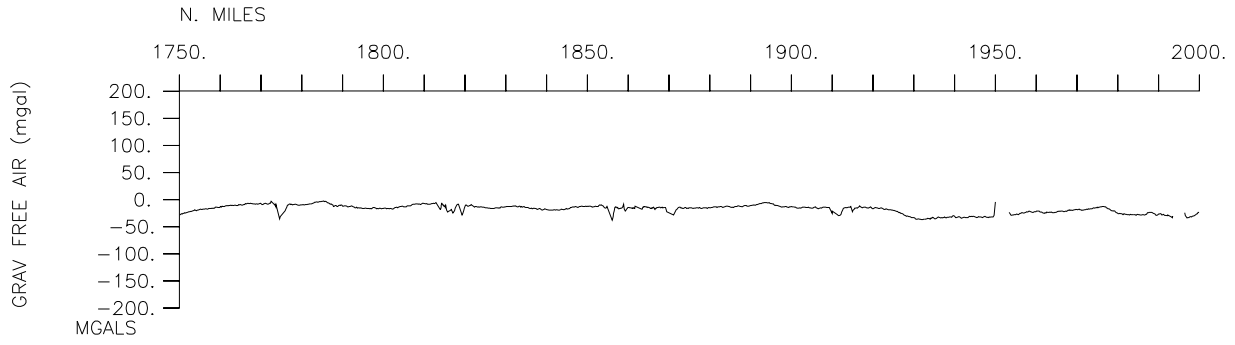


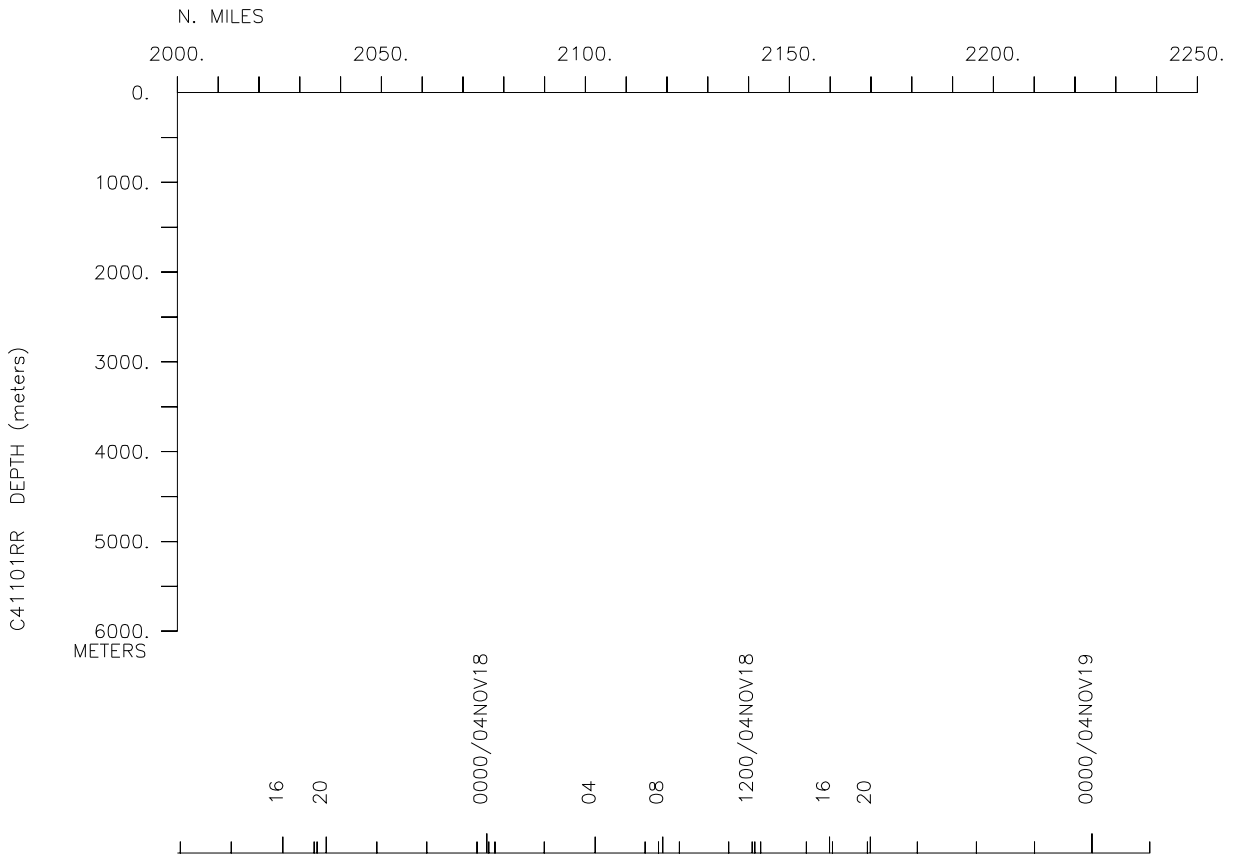
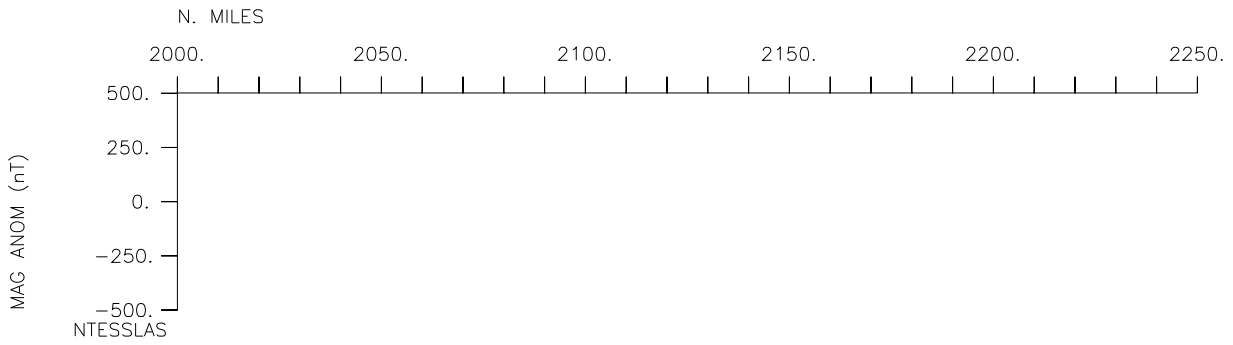
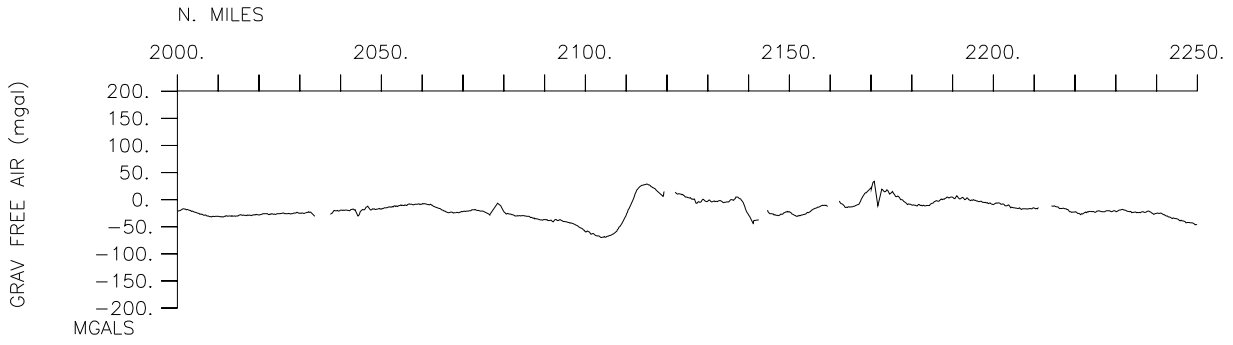


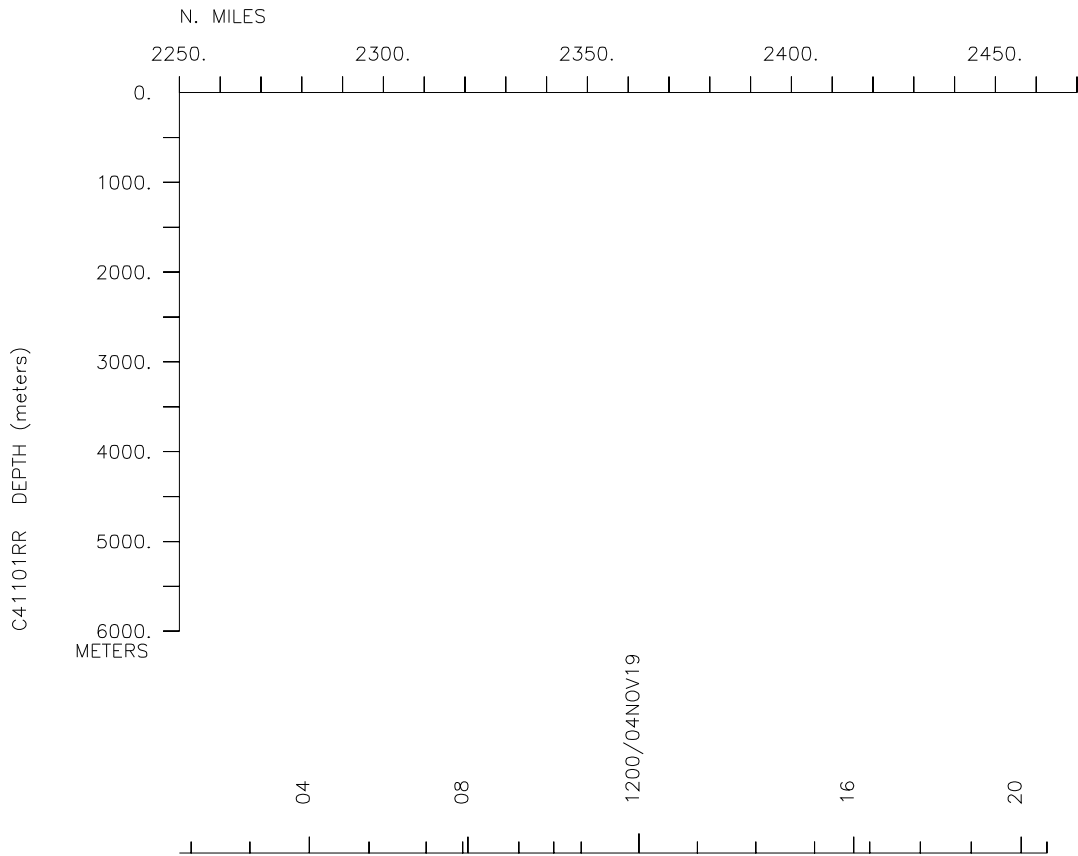
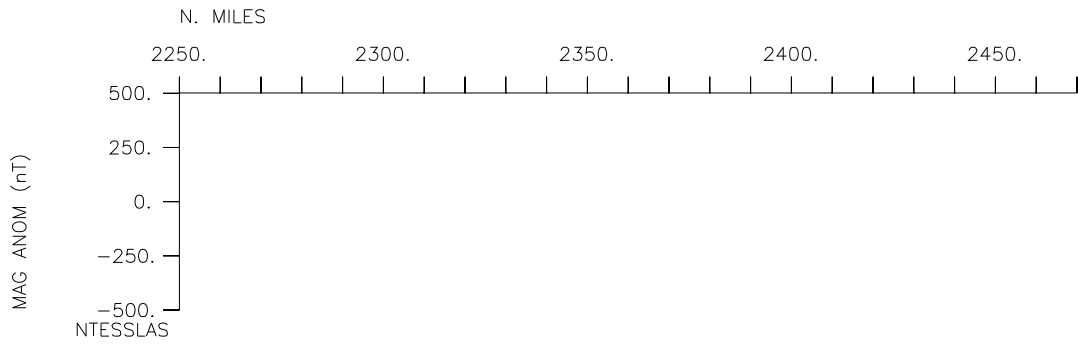
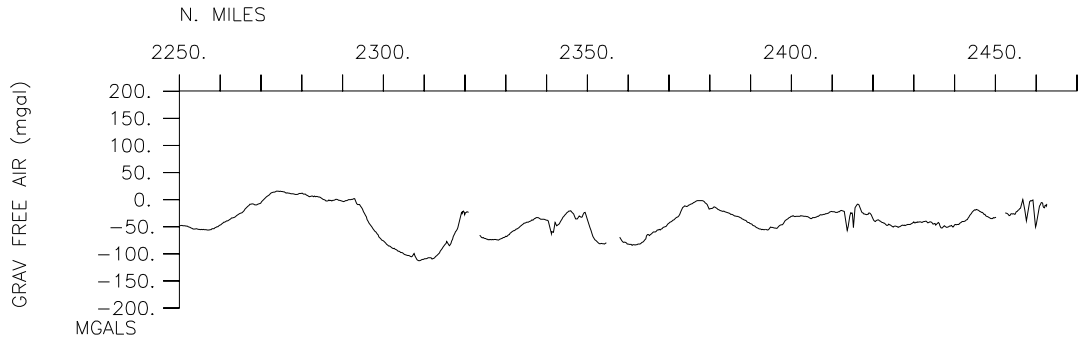












**** Ports ***

1648 021104 LGPT B Depart San Diego 32-40.00N 117-14.00W f CSIO02RR
 2355 191104 LGPT E Arrive San Diego 32-40.00N 117-14.00W f CSIO02RR

**** Personnel ***

#	*****NAME*****	*****TITLE*****	*****AFFILIATION*****	**CRID**
PECS IOD	Goericke,R.	Chief Scientist	Scripps Institution	CSIO02RR
PESP IOD	Wolgast,D.	Technician	Scripps Institution	CSIO02RR
PESP IOD	Wilkinson,J.	Prog/analyst	Scripps Institution	CSIO02RR
PESP NOAA	Dotson,R.	Fishery biologist	Nat.Mar.Fish.Ctr	CSIO02RR
PESP NOAA	Hays,A.	Fishery biologist	Nat.Mar.Fish.Ctr	CSIO02RR
PESP IOD	Sheldon,J.	Technician	Scripps Institution	CSIO02RR
PESP STS	Becker,S.	Res.assistant	Scripps Institution	CSIO02RR
PEST IOD	Powell,J.	Technician	Scripps Institution	CSIO02RR
PESP IOD	Ramirez,F.	Technician	Scripps Institution	CSIO02RR
PESP NOAA	Abramenkoff,D.	Technician	Nat.Mar.Fish.Ctr	CSIO02RR
PESP NOAA	Bowlin,N.	Technician	Nat.Mar.Fish.Ctr	CSIO02RR
PESP UCSD	Furutani,H.	Scientist	U.of Ca.San Diego	CSIO02RR
PESP UCSD	Dall'osto,M.	Scientist	U.of Ca.San Diego	CSIO02RR
PESP GRD	Aluwahari,L.	Scientist	Scripps Institution	CSIO02RR
PESP SIO	Reynolds,S.	Technician	Scripps Institution	CSIO02RR
PESP IOD	Taylor,A.	Technician	Scripps Institution	CSIO02RR
PESP SIO	Seegers,B.	Technician	Scripps Institution	CSIO02RR
PESP SIO	Kacena,T.	Technician	Scripps Institution	CSIO02RR
PESP SIO	Henderson,L.	Technician	Scripps Institution	CSIO02RR
PEST SIO	Hopkinson,B.	Grad student	Scripps Institution	CSIO02RR
PEST SIO	Soldevilla,M.	Grad student	Scripps Institution	CSIO02RR
PEST GRD	Dejesus,R.	Grad student	Scripps Institution	CSIO02RR
PESP VOL	Abremenkoff,M.	Volunteer	Scripps Institution	CSIO02RR
PESP VOL	Ekern,L.	Volunteer	Scripps institution	CSIO02RR
PESP SIX	Douglas,A.	Mammal observer	Cascadia Research	CSIO02RR
PESP SIX	Miller,A.	Mammal observer	Cascadia Research	CSIO02RR
PESP SIX	Yin,S.	Mammal observer	Cascadia Research	CSIO02RR
PESP SIX	Smith,M.H.	Mammal observer	Cascadia Research	CSIO02RR
PESP SIX	Keiper,C.	Bird observer	Pt.Reyes Bird Obs.	CSIO02RR
PECT STS	Quiel,B.	Computer tech	Scripps Institution	CSIO02RR
PERT STS	Colt,C.	Resident tech	Scripps Institution	CSIO02RR
PESP SIO	Monroe,R.	Journalist	SIO/explorations	CSIO02RR
PESP SIO	Call,B.	Videographer	SIO/explorations	CSIO02RR
PESP SIX	Genger,H.	Scientist	Humboldt State Univ	CSIO02RR
PEST SIO	Meador,T.	Grad student	Scripps Institution	CSIO02RR
PESP IOD	Ohman,M.	Professor	Scripps Institution	CSIO02RR
PESP SIX	McOwiti,T.O.	Journalist	Lter Network office	CSIO02RR

**** NOTES ***

#An 'X' in the (B)egin/(E)nd column following the sample code indicates no
 #sample or data recovered. A 'C' indicates continuation of data collection
 #from before the beginning or after the end of a particular leg, (moored
 #bottom instruments, for example.) The number appearing in the columns
 #between the sample identifier and the disposition code, for many sample
 #entries, is the water depth in corrected meters.

#Additional Codes ***

#OPXX: Optical Free Fall Package (PRR)
 #OPC: Optical PCodes Counter
 #LPC: Laser Optical Plankton Counter
 #ACXX: Acoustic Towed Vehicle (Hydrophone Array)
 #TDOP: CTD package (no rosette) with optical instruments (transmissometers)

#GMT	DDMMYY	SAMP	B	SAMPLE	DISP	p	CRUISE			
#TIME	DATE	TZ	CODE	E	IDENTIFIER	CODE	LATITUDE	LONGITUDE	c	LEG-SHIP
#-----	-----	---	---	-----	-----	---	-----	-----	---	-----

**** Underway Data Curator - Shipboard Technical Support Group ext.41899 ***
 **** Digital Data Curator - Geological Data Center, S.P. Miller, ext.41898 ***

**** Digital Gravity ****

0012	031104	0	GVDD	B	digital gravity	GDC	32-56.59N	117-19.30W	g	CSIO02RR
2032	191104	0	GVDD	E	digital gravity	GDC	32-41.53N	117-13.88W	g	CSIO02RR

**** Integrated Meteorological Acquisition System ****

0012	031104	0	IMET	B	weather measurements	GDC	32-56.59N	117-19.30W	g	CSIO02RR
2032	191104	0	IMET	E	weather measurements	GDC	32-41.53N	117-13.88W	g	CSIO02RR

**** Acoustic Doppler Current Profiler ****

0012	031104	0	ADCP	B	current measurements	GDC	32-56.59N	117-19.30W	g	CSIO02RR
2032	191104	0	ADCP	E	current measurements	GDC	32-41.53N	117-13.88W	g	CSIO02RR

#GMT	DDMMYY	SAMP	B	SAMPLE	DISP				p	CRUISE
#TIME	DATE	TZ	CODE	E	IDENTIFIER	CODE	LATITUDE	LONGITUDE	c	LEG-SHIP
#-----	--	---	-	-----	-----	---	-----	-----	-	-----

#*** Acoustic Sonobuoys ***

1311	081104	0	ACXX	Acoustic Sonobuoy	SIO	32-24.53N	119-58.77W	g	CSIO02RR
0044	091104	0	ACXX	Acoustic Sonobuoy	SIO	32-54.59N	118-57.13W	g	CSIO02RR
1412	091104	0	ACXX	Acoustic Sonobuoy	SIO	33-24.22N	117-55.98W	g	CSIO02RR
0208	101104	0	ACXX	Acoustic Sonobuoy	SIO	33-52.35N	118-29.46W	g	CSIO02RR
1336	101104	0	ACXX	Acoustic Sonobuoy	SIO	33-29.97N	119-17.92W	g	CSIO02RR
0331	121104	0	ACXX	Acoustic Sonobuoy	SIO	31-39.98N	123-03.04W	g	CSIO02RR
1523	121104	0	ACXX	Acoustic Sonobuoy	SIO	31-53.75N	124-09.51W	g	CSIO02RR
0444	131104	0	ACXX	Acoustic Sonobuoy	SIO	32-33.68N	122-50.77W	g	CSIO02RR
1717	131104	0	ACXX	Acoustic Sonobuoy	SIO	33-14.34N	121-27.60W	g	CSIO02RR
0023	141104	0	ACXX	Acoustic Sonobuoy	SIO	33-34.18N	120-46.37W	g	CSIO02RR
0250	151104	0	ACXX	Acoustic Sonobuoy	SIO	34-16.87N	120-00.82W	g	CSIO02RR
1423	151104	0	ACXX	Acoustic Sonobuoy	SIO	34-19.51N	120-47.04W	g	CSIO02RR
1824	151104	0	ACXX	Acoustic Sonobuoy	SIO	34-09.48N	121-08.01W	g	CSIO02RR
0031	161104	0	ACXX	Acoustic Sonobuoy	SIO	33-49.62N	121-49.32W	g	CSIO02RR
0621	161104	0	ACXX	Acoustic Sonobuoy	SIO	33-29.49N	122-30.99W	g	CSIO02RR
1322	161104	0	ACXX	Acoustic Sonobuoy	SIO	33-09.36N	123-12.48W	g	CSIO02RR
0326	171104	0	ACXX	Acoustic Sonobuoy	SIO	33-22.38N	124-18.73W	g	CSIO02RR
1631	171104	0	ACXX	Acoustic Sonobuoy	SIO	34-02.81N	122-57.49W	g	CSIO02RR
0506	181104	0	ACXX	Acoustic Sonobuoy	SIO	34-42.31N	121-34.97W	g	CSIO02RR

#*** Acoustic Towed Hydrophones ***

2350	021104	0	ACXX	B Towed	93.4-26.4	SIO	32-57.33N	117-17.44W	g	CSIO02RR
0000	031104	0	ACXX	E Hydrophones	ns	SIO	32-57.24N	117-17.68W	g	CSIO02RR
0045	051104	0	ACXX	B Towed	93.3-70	SIO	31-06.32N	120-51.52W	g	CSIO02RR
0200	051104	0	ACXX	E Hydrophones	ns	SIO	31-05.59N	120-52.68W	g	CSIO02RR
1903	051104	0	ACXX	B Towed	93.3-100	SIO	30-29.55N	122-16.35W	g	CSIO02RR
1928	051104	0	ACXX	E Hydrophones	ns	SIO	30-28.12N	122-19.27W	g	CSIO02RR
0206	061104	0	ACXX	B Towed	93.3-110	SIO	30-08.92N	122-57.70W	g	CSIO02RR
0230	061104	0	ACXX	E Hydrophones	ns	SIO	30-08.62N	122-58.02W	g	CSIO02RR
1856	061104	0	ACXX	B Towed	90-120	SIO	30-25.06N	123-59.85W	g	CSIO02RR
1906	061104	0	ACXX	E Hydrophones	ns	SIO	30-25.63N	123-58.58W	g	CSIO02RR
1444	071104	0	ACXX	B Towed	90-90	SIO	31-22.23N	122-01.24W	g	CSIO02RR
1604	071104	0	ACXX	E Hydrophones	ns	SIO	31-24.50N	122-00.40W	g	CSIO02RR
2202	081104	0	ACXX	B Towed	90-53.3	SIO	32-39.12N	119-31.74W	g	CSIO02RR
2223	081104	0	ACXX	E Hydrophones	ns	SIO	32-40.21N	119-28.13W	g	CSIO02RR
0000	111104	0	ACXX	B Towed	87-55	SIO	33-08.36N	120-02.56W	g	CSIO02RR
0127	111104	0	ACXX	E Hydrophone Array	ns	SIO	32-59.83N	120-20.12W	g	CSIO02RR
0136	131104	0	ACXX	B Towed		SIO	32-15.76N	123-29.66W	g	CSIO02RR
0441	131104	0	ACXX	E Hydrophone Array	ns	SIO	32-33.38N	122-51.39W	g	CSIO02RR
0000	141104	0	ACXX	B Towed		SIO	33-31.91N	120-51.07W	g	CSIO02RR
0020	141104	0	ACXX	E Hydrophone Array		SIO	33-33.88N	120-46.99W	g	CSIO02RR
1159	141104	0	ACXX	B Towed		SIO	33-52.92N	120-04.25W	g	CSIO02RR
1500	141104	0	ACXX	E Hydrophone Array		SIO	34-05.57N	119-29.58W	g	CSIO02RR
1705	141104	0	ACXX	B Towed		SIO	34-11.11N	119-31.93W	g	CSIO02RR
1711	141104	0	ACXX	E Hydrophone Array		SIO	34-11.11N	119-32.12W	g	CSIO02RR
1817	141104	0	ACXX	B Towed (on sta) 30m		SIO	34-13.50N	119-24.71W	g	CSIO02RR
1838	141104	0	ACXX	E Hydrophone Array		SIO	34-13.50N	119-24.70W	g	CSIO02RR

#*** Hydrgraphic Casts - GoFlow samples ***

1811	031104	0	HCGF	B Go Flow 01	93.3-45	SIO	32-20.79N	118-33.29W	g	CSIO02RR
1823	031104	0	HCGF	E Trace Fe	45m	SIO	32-20.79N	118-33.30W	g	CSIO02RR
1828	031104	0	HCGF	B Go Flow 02	93.3-45	SIO	32-20.79N	118-33.30W	g	CSIO02RR
1837	031104	0	HCGF	E Trace Fe	45m	SIO	32-20.79N	118-33.30W	g	CSIO02RR
1846	031104	0	HCGF	B Go Flow 03	93.3-45	SIO	32-20.79N	118-33.30W	g	CSIO02RR
1853	031104	0	HCGF	E Trace Fe	45m	SIO	32-20.79N	118-33.30W	g	CSIO02RR
0420	041104	0	HCGF	B Go Flow 04	93.3-55	SIO	32-00.80N	119-14.00W	g	CSIO02RR
0432	041104	0	HCGF	E Trace Fe	20m	SIO	32-00.80N	119-14.00W	g	CSIO02RR
0436	041104	0	HCGF	B Go Flow 05	93.3-55	SIO	32-00.80N	119-14.00W	g	CSIO02RR
0439	041104	0	HCGF	E Trace Fe	20m	SIO	32-00.80N	119-13.99W	g	CSIO02RR

0443	041104	0	HCGF	B	Go Flow 06	93.3-55	SIO	32-00.80N	119-14.00W	g	CSIO02RR
0447	041104	0	HCGF	E	Trace Fe	20m	SIO	32-00.79N	119-14.00W	g	CSIO02RR
1807	041104	0	HCGF	B	Go Flow 07	93.3-70	SIO	31-31.51N	120-15.62W	g	CSIO02RR
1815	041104	0	HCGF	E	Trace Fe	65m	SIO	31-31.52N	120-15.61W	g	CSIO02RR
1819	041104	0	HCGF	B	Go Flow 08	93.3-70	SIO	31-31.51N	120-15.62W	g	CSIO02RR
1822	041104	0	HCGF	E	Trace Fe	65m	SIO	31-31.51N	120-15.62W	g	CSIO02RR
1826	041104	0	HCGF	B	Go Flow 09	93.3-70	SIO	31-31.51N	120-15.62W	g	CSIO02RR
1830	041104	0	HCGF	E	Trace Fe	65m	SIO	31-31.52N	120-15.61W	g	CSIO02RR
1630	061104	0	HCGF	B	Go Flow 10	90-120	SIO	30-25.10N	123-59.91W	g	CSIO02RR
1638	061104	0	HCGF	E	Trace Fe	100m	SIO	30-25.10N	123-59.91W	g	CSIO02RR
1643	061104	0	HCGF	B	Go Flow 11	90-120	SIO	30-25.10N	123-59.91W	g	CSIO02RR
1646	061104	0	HCGF	E	Trace Fe	60m	SIO	30-25.10N	123-59.91W	g	CSIO02RR
1651	061104	0	HCGF	B	Go Flow 12	90-120	SIO	30-25.10N	123-59.91W	g	CSIO02RR
1654	061104	0	HCGF	E	Trace Fe	20m	SIO	30-25.10N	123-59.91W	g	CSIO02RR
1906	071104	0	HCGF	B	Go Flow 13	90-90	SIO	31-25.10N	121-59.38W	g	CSIO02RR
1913	071104	0	HCGF	E	Trace Fe	70m	SIO	31-25.10N	121-59.38W	g	CSIO02RR
1917	071104	0	HCGF	B	Go Flow 14	90-90	SIO	31-25.10N	121-59.38W	g	CSIO02RR
1921	071104	0	HCGF	E	Trace Fe	70m	SIO	31-25.10N	121-59.38W	g	CSIO02RR
1926	071104	0	HCGF	B	Go Flow 15	90-90	SIO	31-25.10N	121-59.38W	g	CSIO02RR
1930	071104	0	HCGF	E	Trace Fe	70m	SIO	31-25.10N	121-59.38W	g	CSIO02RR
1916	081104	0	HCGF	B	Go Flow 16	90-53.3	SIO	32-39.09N	119-28.83W	g	CSIO02RR
1920	081104	0	HCGF	E	Trace Fe	65m	SIO	32-39.09N	119-28.83W	g	CSIO02RR
1923	081104	0	HCGF	B	Go Flow 17	90-53.3	SIO	32-39.09N	119-28.83W	g	CSIO02RR
1926	081104	0	HCGF	E	Trace Fe	65m	SIO	32-39.09N	119-28.83W	g	CSIO02RR
1930	081104	0	HCGF	B	Go Flow 18	90-53.3	SIO	32-39.09N	119-28.83W	g	CSIO02RR
1934	081104	0	HCGF	E	Trace Fe	65m	SIO	32-39.09N	119-28.84W	g	CSIO02RR
1609	101104	0	HCGF	B	Go Flow 19	87-45	SIO	33-29.76N	119-20.53W	g	CSIO02RR
1612	101104	0	HCGF	E	Trace Fe	35m	SIO	33-29.76N	119-20.53W	g	CSIO02RR
1616	101104	0	HCGF	B	Go Flow 20	87-45	SIO	33-29.76N	119-20.53W	g	CSIO02RR
1618	101104	0	HCGF	E	Trace Fe	35m	SIO	33-29.76N	119-20.53W	g	CSIO02RR
1622	101104	0	HCGF	B	Go Flow 21	87-45	SIO	33-29.76N	119-20.53W	g	CSIO02RR
1625	101104	0	HCGF	E	Trace Fe	35m	SIO	33-29.76N	119-20.53W	g	CSIO02RR
0251	111104	0	HCGF	B	Go Flow 22	87-60	SIO	32-59.40N	120-21.00W	g	CSIO02RR
0258	111104	0	HCGF	E	Trace Fe	100m	SIO	32-59.40N	120-21.00W	g	CSIO02RR
0300	111104	0	HCGF	B	Go Flow 23	87-60	SIO	32-59.40N	120-21.00W	g	CSIO02RR
0304	111104	0	HCGF	E	Trace Fe	50m	SIO	32-59.40N	120-21.00W	g	CSIO02RR
0306	111104	0	HCGF	B	Go Flow 24	87-60	SIO	32-59.40N	120-20.99W	g	CSIO02RR
0309	111104	0	HCGF	E	Trace Fe	20m	SIO	32-59.40N	120-21.00W	g	CSIO02RR
1807	111104	0	HCGF	B	Go Flow 25	87-80	SIO	32-19.41N	121-42.89W	g	CSIO02RR
1810	111104	0	HCGF	E	Trace Fe	55m	SIO	32-19.41N	121-42.89W	g	CSIO02RR
1820	111104	0	HCGF	B	Go Flow 26	87-80	SIO	32-19.41N	121-42.89W	g	CSIO02RR
1823	111104	0	HCGF	E	Trace Fe	55m	SIO	32-19.41N	121-42.89W	g	CSIO02RR
1826	111104	0	HCGF	B	Go Flow 27	87-80	SIO	32-19.41N	121-42.89W	g	CSIO02RR
1829	111104	0	HCGF	E	Trace Fe	55m	SIO	32-19.41N	121-42.89W	g	CSIO02RR
1835	121104	0	HCGF	B	Go Flow 28	83-110	SIO	31-54.72N	124-10.19W	g	CSIO02RR
1841	121104	0	HCGF	E	Trace Fe	120m	SIO	31-54.72N	124-10.19W	g	CSIO02RR
1843	121104	0	HCGF	B	Go Flow 29	83-110	SIO	31-54.72N	124-10.19W	g	CSIO02RR
1845	121104	0	HCGF	E	Trace Fe	20m	SIO	31-54.72N	124-10.19W	g	CSIO02RR
1848	121104	0	HCGF	B	Go Flow 30	83-110	SIO	31-54.72N	124-10.19W	g	CSIO02RR
1849	121104	0	HCGF	E	Trace Fe	20m	SIO	31-54.72N	124-10.19W	g	CSIO02RR
1847	131104	0	HCGF	B	Go Flow 31	83-70	SIO	33-14.70N	121-26.60W	g	CSIO02RR
1851	131104	0	HCGF	E	Trace Fe	45m	SIO	33-14.70N	121-26.60W	g	CSIO02RR
1855	131104	0	HCGF	B	Go Flow 32	83-70	SIO	33-14.70N	121-26.60W	g	CSIO02RR
1858	131104	0	HCGF	E	Trace Fe	45m	SIO	33-14.70N	121-26.60W	g	CSIO02RR
1901	131104	0	HCGF	B	Go Flow 33	83-70	SIO	33-14.70N	121-26.59W	g	CSIO02RR
1905	131104	0	HCGF	E	Trace Fe	45m	SIO	33-14.70N	121-26.60W	g	CSIO02RR
1950	151104	0	HCGF	B	Go Flow 34	80-60	SIO	34-08.99N	121-09.00W	g	CSIO02RR
2000	151104	0	HCGF	E	Trace Fe	m	SIO	34-09.00N	121-08.99W	g	CSIO02RR
1754	161104	0	HCGF	B	Go Flow 35	80-90	SIO	33-09.00N	123-13.30W	g	CSIO02RR
1756	161104	0	HCGF	E	Trace Fe	50m	SIO	33-09.00N	123-13.30W	g	CSIO02RR
1759	161104	0	HCGF	B	Go Flow 36	80-90	SIO	33-09.00N	123-13.30W	g	CSIO02RR
1802	161104	0	HCGF	E	Trace Fe	50m	SIO	33-09.00N	123-13.30W	g	CSIO02RR
1805	161104	0	HCGF	B	Go Flow 37	80-90	SIO	33-09.00N	123-13.30W	g	CSIO02RR
1808	161104	0	HCGF	E	Trace Fe	50m	SIO	33-09.00N	123-13.30W	g	CSIO02RR
1756	171104	0	HCGF	B	Go Flow 38	77-80	SIO	34-03.30N	122-56.49W	g	CSIO02RR
1800	171104	0	HCGF	E	Trace Fe	28m	SIO	34-03.30N	122-56.49W	g	CSIO02RR
1805	171104	0	HCGF	B	Go Flow 39	77-80	SIO	34-03.30N	122-56.49W	g	CSIO02RR
1806	171104	0	HCGF	E	Trace Fe	28m	SIO	34-03.30N	122-56.50W	g	CSIO02RR
1809	171104	0	HCGF	B	Go Flow 40	77-80	SIO	34-03.30N	122-56.49W	g	CSIO02RR

```

1811 171104 0 HCGF E Trace Fe          28m SIO  34-03.30N 122-56.49W g CSIO02RR

#*** Open Net - Bongos ***
#*** Samples shared by IOD, SIO and NMFC ***

2131 021104 0 ONBG B Bongo OPC 93.3-26.7  IOD  32-56.85N 117-19.06W g CSIO02RR
2153 021104 0 ONBG E 505 o 300m ms      IOD  32-56.45N 117-19.45W g CSIO02RR
2330 021104 0 ONBG B Bongo OPC 93.4-26.4  IOD  32-57.24N 117-16.85W g CSIO02RR
2337 021104 0 ONBG E 505 o          ms      IOD  32-57.27N 117-17.03W g CSIO02RR
0310 031104 0 ONBG B Bongo OPC 93.3-28      IOD  32-54.99N 117-24.92W g CSIO02RR
0334 031104 0 ONBG E 505 o 300m ms      IOD  32-55.01N 117-25.48W g CSIO02RR
1043 031104 0 ONBG B Bongo OPC 93.3-35      IOD  32-40.66N 117-53.19W g CSIO02RR
1106 031104 0 ONBG E 505 o 300m ms      IOD  32-40.39N 117-53.69W g CSIO02RR
1429 031104 0 ONBG B Bongo OPC 93.3-40      IOD  32-31.10N 118-13.60W g CSIO02RR
1450 031104 0 ONBG E 505 o 300m ms      IOD  32-31.26N 118-14.05W g CSIO02RR
1949 031104 0 ONBG B Bongo OPC 93.3-45      IOD  32-20.92N 118-33.85W g CSIO02RR
2012 031104 0 ONBG E 505 o 300m ms      IOD  32-21.01N 118-34.39W g CSIO02RR
0056 041104 0 ONBG B Bongo OPC 93.3-50      IOD  32-10.46N 118-54.10W g CSIO02RR
0113 041104 0 ONBG E 505 o 300m ms      IOD  32-10.36N 118-54.50W g CSIO02RR
0718 041104 0 ONBG B Bongo OPC 93.3-55      IOD  32-01.02N 119-15.32W g CSIO02RR
0742 041104 0 ONBG E 505 o 300m ms      IOD  32-01.09N 119-16.10W g CSIO02RR
1145 041104 0 ONBG B Bongo OPC 93.3-60      IOD  31-50.94N 119-35.15W g CSIO02RR
1210 041104 0 ONBG E 505 o 300m ms      IOD  31-51.04N 119-35.90W g CSIO02RR
1615 041104 0 ONBG B Bongo OPC 93.3-70      IOD  31-31.10N 120-15.24W g CSIO02RR
1637 041104 0 ONBG E 505 o 300m ms      IOD  31-31.37N 120-15.79W g CSIO02RR
2310 041104 0 ONBG B Deep Bongo 01          IOD  31-07.80N 120-50.50W g CSIO02RR
0332 051104 0 ONBG E 93.3-70          3525m IOD  31-04.68N 120-54.35W g CSIO02RR
1222 051104 0 ONBG B Bongo OPC 93.3-90      IOD  30-50.48N 121-35.89W g CSIO02RR
1244 051104 0 ONBG E 505 o 300m ms      IOD  30-50.01N 121-36.12W g CSIO02RR
1636 051104 0 ONBG B Bongo OPC 93.3-100     IOD  30-30.39N 122-16.02W g CSIO02RR
1700 051104 0 ONBG E 505 o 300m ms      IOD  30-29.87N 122-16.11W g CSIO02RR
1847 051104 0 ONBG B Bongo LPC 93.3-100     IOD  30-29.84N 122-16.14W g CSIO02RR
1901 051104 0 ONBG E 505/202 o 300m ms     IOD  30-29.57N 122-16.32W g CSIO02RR
0045 061104 0 ONBG B Bongo OPC 93.3-110     IOD  30-10.57N 122-56.12W g CSIO02RR
0106 061104 0 ONBG E 505 o 300m ms      IOD  30-10.22N 122-56.50W g CSIO02RR
0122 061104 0 ONBG B Deep Bongo 02 3510m   IOD  30-09.77N 122-56.90W g CSIO02RR
0532 061104 0 ONBG E Deep Bongo          IOD  30-07.12N 123-01.35W g CSIO02RR
1027 061104 0 ONBG B Bongo OPC 93.3-120     IOD  29-50.85N 123-35.70W g CSIO02RR
1052 061104 0 ONBG E 505 o 300m ms      IOD  29-50.84N 123-36.28W g CSIO02RR
1459 061104 0 ONBG B Bongo OPC 90-120      IOD  30-25.00N 124-00.52W g CSIO02RR
1521 061104 0 ONBG E 505 o 300m ms      IOD  30-24.80N 124-01.13W g CSIO02RR
1530 061104 0 ONBG B Bongo LPC 90-120      IOD  30-24.71N 124-01.37W g CSIO02RR
1603 061104 0 ONBG E 505/202 o 300m ms     IOD  30-24.51N 124-02.01W g CSIO02RR
0020 071104 0 ONBG B Bongo OPC 90-110      IOD  30-45.06N 123-20.71W g CSIO02RR
0042 071104 0 ONBG E 505 o 300m ms      IOD  30-44.85N 123-21.19W g CSIO02RR
0054 071104 0 ONBG B Bongo LPC 90-110      IOD  30-44.78N 123-21.42W g CSIO02RR
0117 071104 0 ONBG E 505/202 o 300m ms     IOD  30-44.54N 123-21.93W g CSIO02RR
0727 071104 0 ONBG B Bongo OPC 90-100      IOD  31-05.57N 122-39.33W g CSIO02RR
0752 071104 0 ONBG E 505 o 300m ms      IOD  31-05.99N 122-39.21W g CSIO02RR
0801 071104 0 ONBG B Bongo LPC 90-100      IOD  31-06.01N 122-39.21W g CSIO02RR
0824 071104 0 ONBG E 505/202 o 300m ms     IOD  31-06.42N 122-39.04W g CSIO02RR
1156 071104 0 ONBG B Deep Bongo 03          IOD  31-19.38N 121-59.88W g CSIO02RR
1547 071104 0 ONBG E          3525m         IOD  31-23.28N 122-01.75W g CSIO02RR
1956 071104 0 ONBG B Bongo OPC 90-90        IOD  31-25.18N 121-59.89W g CSIO02RR
2023 071104 0 ONBG E 505 o 300m ms      IOD  31-25.28N 122-00.54W g CSIO02RR
2035 071104 0 ONBG B Bongo LPC 90-90        IOD  31-25.32N 122-00.79W g CSIO02RR
2059 071104 0 ONBG E 505/202 o 300m ms     IOD  31-25.45N 122-01.33W g CSIO02RR
0223 081104 0 ONBG B Bongo OPC 90-80        IOD  31-45.05N 121-19.77W g CSIO02RR
0245 081104 0 ONBG E 505 o 300m ms      IOD  31-44.86N 121-20.33W g CSIO02RR
0300 081104 0 ONBG B Bongo LPC 90-80        IOD  31-44.76N 121-20.79W g CSIO02RR
0324 081104 0 ONBG E 505/202 o 300m ms     IOD  31-44.56N 121-21.39W g CSIO02RR
0855 081104 0 ONBG B Bongo OPC 90-70        IOD  32-05.51N 120-38.80W g CSIO02RR
0916 081104 0 ONBG E 505 o 300m ms      IOD  32-05.90N 120-39.27W g CSIO02RR
0926 081104 0 ONBG B Bongo LPC 90-70        IOD  32-05.99N 120-39.43W g CSIO02RR
0948 081104 0 ONBG E 505/202 o 300m ms     IOD  32-06.33N 120-39.94W g CSIO02RR
1447 081104 0 ONBG B Bongo OPC 90-60        IOD  32-25.55N 119-58.04W g CSIO02RR
1507 081104 0 ONBG E 505 o 300m ms      IOD  32-25.92N 119-58.45W g CSIO02RR
1516 081104 0 ONBG B Bongo LPC 90-60        IOD  32-26.11N 119-58.67W g CSIO02RR

```

1539	081104	0	ONBG	E	505/202	o	300m	ms	IOD	32-26.54N	119-59.10W	g	CSIO02RR
2058	081104	0	ONBG	B	Bongo	OPC	90-53.3		IOD	32-39.20N	119-29.83W	g	CSIO02RR
2114	081104	0	ONBG	E	505	o	300m	ms	IOD	32-39.15N	119-30.22W	g	CSIO02RR
2135	081104	0	ONBG	B	Bongo	LPC	90-53.3		IOD	32-39.14N	119-31.14W	g	CSIO02RR
2158	081104	0	ONBG	E	505/202	o	300m	ms	IOD	32-39.11N	119-31.78W	g	CSIO02RR
0311	091104	0	ONBG	B	Bongo	OPC	90-45		IOD	32-55.21N	118-56.65W	g	CSIO02RR
0333	091104	0	ONBG	E	505	o	300m	ms	IOD	32-55.30N	118-57.07W	g	CSIO02RR
0350	091104	0	ONBG	B	Bongo	LPC	90-45		IOD	32-55.32N	118-57.30W	g	CSIO02RR
0411	091104	0	ONBG	E	505/202	o	300m	ms	IOD	32-55.31N	118-57.75W	g	CSIO02RR
0854	091104	0	ONBG	B	Bongo	OPC	90-37		IOD	33-11.48N	118-23.44W	g	CSIO02RR
0918	091104	0	ONBG	E	505	o	300m	ms	IOD	33-11.39N	118-24.11W	g	CSIO02RR
0925	091104	0	ONBG	B	Bongo	LPC	90-37		IOD	33-11.34N	118-24.21W	g	CSIO02RR
1146	091104	0	ONBG	E	505/202	o	300m	ms	IOD	33-15.11N	118-15.00W	g	CSIO02RR
1209	091104	0	ONBG	B	Bongo	OPC	90-35		IOD	33-15.15N	118-15.52W	g	CSIO02RR
1231	091104	0	ONBG	E	505	o	m	ms	IOD	33-15.20N	118-16.02W	g	CSIO02RR
1553	091104	0	ONBG	B	Bongo	OPC	90-30		IOD	33-25.10N	117-54.77W	g	CSIO02RR
1616	091104	0	ONBG	E	505	o	m	ms	IOD	33-25.10N	117-55.38W	g	CSIO02RR
1855	091104	0	ONBG	B	Bongo	OPC	90-28		IOD	33-29.37N	117-46.75W	g	CSIO02RR
1902	091104	0	ONBG	E	505	o	100m	ms	IOD	33-29.36N	117-46.95W	g	CSIO02RR
1914	091104	0	ONBG	B	Bongo	LPC	90-28		IOD	33-29.34N	117-47.30W	g	CSIO02RR
1922	091104	0	ONBG	E	505/202	o	100m	ms	IOD	33-29.35N	117-47.50W	g	CSIO02RR
2105	091104	0	ONBG	B	Bongo	OPC	90-27.7		IOD	33-29.66N	117-45.03W	g	CSIO02RR
2205	091104	0	ONBG	E	505	o	m	ms	IOD	33-34.30N	117-56.66W	g	CSIO02RR
2328	091104	0	ONBG	B	Bongo	OPC	88.5-30.1		IOD	33-40.32N	118-05.72W	g	CSIO02RR
2330	091104	0	ONBG	E	505	o	m	ms	IOD	33-40.30N	118-05.77W	g	CSIO02RR
0345	101104	0	ONBG	B	Bongo	OPC	87-33		IOD	33-53.36N	118-29.97W	g	CSIO02RR
0355	101104	0	ONBG	E	505	o	m	ms	IOD	33-53.35N	118-30.24W	g	CSIO02RR
0406	101104	0	ONBG	B	Bongo	OPC	87-33		IOD	33-53.33N	118-30.38W	g	CSIO02RR
0412	101104	0	ONBG	E	505	o	m	ms	IOD	33-53.32N	118-30.54W	g	CSIO02RR
0422	101104	0	ONBG	B	Bongo	LPC	87-33		IOD	33-53.31N	118-30.66W	g	CSIO02RR
0432	101104	0	ONBG	E	505/202	o	m	ms	IOD	33-53.29N	118-30.76W	g	CSIO02RR
0725	101104	0	ONBG	B	Bongo	OPC	87-33		IOD	33-49.69N	118-38.40W	g	CSIO02RR
0746	101104	0	ONBG	E	505	o	m	ms	IOD	33-49.89N	118-38.90W	g	CSIO02RR
1136	101104	0	ONBG	B	Bongo	OPC	87-40		IOD	33-39.51N	118-59.24W	g	CSIO02RR
1200	101104	0	ONBG	E	505	o	m	ms	IOD	33-39.60N	118-59.84W	g	CSIO02RR
1509	101104	0	ONBG	B	Bongo	OPC	87-45		IOD	33-29.59N	119-19.74W	g	CSIO02RR
1532	101104	0	ONBG	E	505	o	m	ms	IOD	33-29.76N	119-20.53W	g	CSIO02RR
2322	101104	0	ONBG	B	Bongo	OPC	87-55		IOD	33-09.14N	120-00.98W	g	CSIO02RR
2347	101104	0	ONBG	E	505	o	m	ms	IOD	33-08.88N	120-01.56W	g	CSIO02RR
0401	111104	0	ONBG	B	Bongo	OPC	87-55		IOD	32-59.60N	120-21.66W	g	CSIO02RR
0424	111104	0	ONBG	E	505	o	300m	ms	IOD	32-59.78N	120-22.35W	g	CSIO02RR
0950	111104	0	ONBG	B	Bongo	OPC	87-70		IOD	32-39.41N	121-02.66W	g	CSIO02RR
1011	111104	0	ONBG	E	505	o	300m	ms	IOD	32-39.40N	121-03.15W	g	CSIO02RR
1500	111104	0	ONBG	B	Bongo	OPC	87-80		IOD	32-19.35N	121-42.45W	g	CSIO02RR
1520	111104	0	ONBG	E	505	o	300m	ms	IOD	32-19.50N	121-43.09W	g	CSIO02RR
2357	111104	0	ONBG	B	Bongo	OPC	87-90		IOD	31-59.37N	122-23.99W	g	CSIO02RR
0021	121104	0	ONBG	E	505	o	300m	ms	IOD	31-59.02N	122-24.45W	g	CSIO02RR
0539	121104	0	ONBG	B	Bongo	OPC	87-90		IOD	31-39.60N	123-04.49W	g	CSIO02RR
0602	121104	0	ONBG	E	505	o	300m	ms	IOD	31-39.63N	123-04.99W	g	CSIO02RR
1138	121104	0	ONBG	B	Bongo	OPC	87-110		IOD	31-20.08N	123-44.96W	g	CSIO02RR
1200	121104	0	ONBG	E	505	o	300m	ms	IOD	31-20.41N	123-45.23W	g	CSIO02RR
1553	121104	0	ONBG	B	Bongo	OPC	83-110		IOD	31-55.15N	124-10.17W	g	CSIO02RR
1614	121104	0	ONBG	E	505	o	300m	ms	IOD	31-55.66N	124-10.10W	g	CSIO02RR
1622	121104	0	ONBG	B	Bongo	LPC	83-110		IOD	31-55.87N	124-10.08W	g	CSIO02RR
1645	121104	0	ONBG	E	505/202	o	m	ms	IOD	31-56.44N	124-10.04W	g	CSIO02RR
0026	131104	0	ONBG	B	Bongo	OPC	83-100		IOD	32-14.76N	123-30.07W	g	CSIO02RR
0049	131104	0	ONBG	E	505	o	300m	ms	IOD	32-14.85N	123-30.67W	g	CSIO02RR
0057	131104	0	ONBG	B	Bongo	LPC	83-100		IOD	32-14.90N	123-30.87W	g	CSIO02RR
0120	131104	0	ONBG	E	505/202	o	300m	ms	IOD	32-15.20N	123-31.29W	g	CSIO02RR
0658	131104	0	ONBG	B	Bongo	OPC	83-90		IOD	32-34.97N	122-48.94W	g	CSIO02RR
0720	131104	0	ONBG	E	505	o	300m	ms	IOD	32-35.32N	122-49.08W	g	CSIO02RR
0729	131104	0	ONBG	B	Bongo	LPC	83-90		IOD	32-35.42N	122-49.14W	g	CSIO02RR
0752	131104	0	ONBG	E	505/202	o	300m	ms	IOD	32-35.82N	122-49.35W	g	CSIO02RR
1237	131104	0	ONBG	B	Bongo	OPC	83-90		IOD	32-54.77N	122-07.76W	g	CSIO02RR
1320	131104	0	ONBG	E	505	o	300m	ms	IOD	32-55.66N	122-08.50W	g	CSIO02RR
1326	131104	0	ONBG	B	Bongo	LPC	83-90		IOD	32-55.73N	122-08.59W	g	CSIO02RR
1350	131104	0	ONBG	E	505/202	o	300m	ms	IOD	32-56.24N	122-09.03W	g	CSIO02RR
1958	131104	0	ONBG	B	Bongo	OPC	83-70		IOD	33-15.17N	121-26.64W	g	CSIO02RR
2021	131104	0	ONBG	E	505	o	300m	ms	IOD	33-15.50N	121-27.18W	g	CSIO02RR

2031	131104	0	ONBG	B	Bongo	LPC	83-70	IOD	33-15.71N	121-27.46W	g	CSIO02RR
2054	131104	0	ONBG	E	505/202	o	300m ms	IOD	33-16.02N	121-28.00W	g	CSIO02RR
0241	141104	0	ONBG	B	Bongo	OPC	83-60	IOD	33-35.05N	120-45.41W	g	CSIO02RR
0305	141104	0	ONBG	E	505	o	300m ms	IOD	33-35.43N	120-45.65W	g	CSIO02RR
0316	141104	0	ONBG	B	Bongo	LPC	83-60	IOD	33-35.56N	120-45.90W	g	CSIO02RR
0339	141104	0	ONBG	E	505/202	o	300m ms	IOD	33-35.71N	120-46.40W	g	CSIO02RR
0739	141104	0	ONBG	B	Bongo	OPC	83-60	IOD	33-45.21N	120-24.94W	g	CSIO02RR
0800	141104	0	ONBG	E	505	o	300m ms	IOD	33-45.67N	120-25.30W	g	CSIO02RR
0810	141104	0	ONBG	B	Bongo	LPC	83-60	IOD	33-45.89N	120-25.44W	g	CSIO02RR
0833	141104	0	ONBG	E	505/202	o	300m ms	IOD	33-46.36N	120-25.81W	g	CSIO02RR
1116	141104	0	ONBG	B	Bongo	OPC	83-51	IOD	33-52.70N	120-07.31W	g	CSIO02RR
1125	141104	0	ONBG	E	505	o	90m ms	IOD	33-52.71N	120-07.00W	g	CSIO02RR
1133	141104	0	ONBG	B	Bongo	LPC	83-51	IOD	33-52.72N	120-06.66W	g	CSIO02RR
1140	141104	0	ONBG	E	505/202	o	90m ms	IOD	33-52.76N	120-06.44W	g	CSIO02RR
1644	141104	0	ONBG	B	Bongo	OPC	83-42	IOD	34-10.98N	119-31.25W	g	CSIO02RR
1654	141104	0	ONBG	E	505	o	160m ms	IOD	34-11.08N	119-31.61W	g	CSIO02RR
1702	141104	0	ONBG	B	Bongo	LPC	83-42	IOD	34-11.11N	119-31.83W	g	CSIO02RR
1719	141104	0	ONBG	E	505/202	o	160m ms	IOD	34-11.11N	119-32.38W	g	CSIO02RR
1925	141104	0	ONBG	B	Bongo	OPC	83-40.6	IOD	34-13.46N	119-25.33W	g	CSIO02RR
1928	141104	0	ONBG	E	505	o	40m ms	IOD	34-13.46N	119-25.42W	g	CSIO02RR
1936	141104	0	ONBG	B	Bongo	LPC	83-40.6	IOD	34-13.44N	119-25.62W	g	CSIO02RR
1942	141104	0	ONBG	E	505/202	o	40m ms	IOD	34-13.43N	119-25.78W	g	CSIO02RR
2130	141104	0	ONBG	B	Bongo	OPC	83-39.4	IOD	34-15.51N	119-19.46W	g	CSIO02RR
2134	141104	0	ONBG	E	505	o	20m ms	IOD	34-15.48N	119-19.56W	g	CSIO02RR
0134	151104	0	ONBG	B	Bongo	LPC	83-39.4	IOD	34-24.18N	119-48.10W	g	CSIO02RR
0142	151104	0	ONBG	E	505/202	o	m ms	IOD	34-24.07N	119-48.23W	g	CSIO02RR
0622	151104	0	ONBG	B	Bongo	OPC	81.8-46.9	IOD	34-17.01N	120-02.14W	g	CSIO02RR
0647	151104	0	ONBG	E	505	o	40m ms	IOD	34-17.62N	120-02.67W	g	CSIO02RR
0653	151104	0	ONBG	B	Bongo	LPC	81.8-46.9	IOD	34-17.72N	120-02.79W	g	CSIO02RR
0716	151104	0	ONBG	E	505/202	o	40m ms	IOD	34-18.14N	120-03.39W	g	CSIO02RR
1243	151104	0	ONBG	B	Bongo	OPC	80-51	IOD	34-26.77N	120-32.09W	g	CSIO02RR
1250	151104	0	ONBG	E	505	o	90m ms	IOD	34-26.72N	120-32.23W	g	CSIO02RR
1258	151104	0	ONBG	B	Bongo	LPC	80-51	IOD	34-26.66N	120-32.36W	g	CSIO02RR
1308	151104	0	ONBG	E	505	o	100m ms	IOD	34-26.57N	120-32.56W	g	CSIO02RR
1622	151104	0	ONBG	B	Bongo	OPC	80-55	IOD	34-19.34N	120-48.49W	g	CSIO02RR
1648	151104	0	ONBG	E	505	o	300m ms	IOD	34-19.85N	120-49.21W	g	CSIO02RR
2053	151104	0	ONBG	B	Bongo	OPC	80-60	IOD	34-09.12N	121-09.71W	g	CSIO02RR
2116	151104	0	ONBG	E	505	o	300m ms	IOD	34-09.24N	121-10.43W	g	CSIO02RR
0241	161104	0	ONBG	B	Bongo	OPC	80-70	IOD	33-49.42N	121-51.31W	g	CSIO02RR
0303	161104	0	ONBG	E	505	o	300m ms	IOD	33-49.71N	121-51.79W	g	CSIO02RR
0836	161104	0	ONBG	B	Bongo	OPC	80-80	IOD	33-29.48N	122-32.63W	g	CSIO02RR
0857	161104	0	ONBG	E	505	o	300m ms	IOD	33-29.90N	122-33.17W	g	CSIO02RR
1408	161104	0	ONBG	B	Bongo	OPC	80-90	IOD	33-09.13N	123-13.41W	g	CSIO02RR
1431	161104	0	ONBG	E	505	o	300m ms	IOD	33-09.35N	123-13.66W	g	CSIO02RR
2348	161104	0	ONBG	B	Bongo	OPC	80-100	IOD	32-49.36N	123-55.18W	g	CSIO02RR
0010	171104	0	ONBG	E	505	o	300m ms	IOD	32-49.60N	123-55.56W	g	CSIO02RR
0519	171104	0	ONBG	B	Bongo	OPC	77-100	IOD	33-23.72N	124-19.84W	g	CSIO02RR
0543	171104	0	ONBG	E	505	o	300m ms	IOD	33-24.02N	124-20.15W	g	CSIO02RR
0551	171104	0	ONBG	B	Bongo	LPC	77-100	IOD	33-24.10N	124-20.22W	g	CSIO02RR
0621	171104	0	ONBG	E	505	o	300m ms	IOD	33-24.52N	124-20.45W	g	CSIO02RR
1108	171104	0	ONBG	B	Bongo	OPC	77-90	IOD	33-43.85N	123-38.02W	g	CSIO02RR
1133	171104	0	ONBG	E	505	o	300m ms	IOD	33-44.46N	123-38.14W	g	CSIO02RR
1140	171104	0	ONBG	B	Bongo	LPC	77-90	IOD	33-44.70N	123-38.23W	g	CSIO02RR
1156	171104	0	ONBG	E	505	o	300m ns	IOD	33-45.06N	123-38.30W	g	CSIO02RR
1202	171104	0	ONBG	B	Bongo	LPC	77-90	IOD	33-45.17N	123-38.31W	g	CSIO02RR
1225	171104	0	ONBG	E	505	o	300m ms	IOD	33-45.63N	123-38.15W	g	CSIO02RR
1854	171104	0	ONBG	B	Bongo	OPC	77-80	IOD	34-03.74N	122-56.81W	g	CSIO02RR
1916	171104	0	ONBG	E	505	o	300m ms	IOD	34-04.20N	122-57.11W	g	CSIO02RR
1923	171104	0	ONBG	B	Bongo	LPC	77-80	IOD	34-04.34N	122-57.21W	g	CSIO02RR
1945	171104	0	ONBG	E	505	o	300m ms	IOD	34-04.76N	122-57.58W	g	CSIO02RR
0056	181104	0	ONBG	B	Bongo	OPC	77-70	IOD	34-23.52N	122-15.20W	g	CSIO02RR
0117	181104	0	ONBG	E	505	o	300m ms	IOD	34-23.76N	122-15.68W	g	CSIO02RR
0123	181104	0	ONBG	B	Bongo	LPC	77-70	IOD	34-23.82N	122-15.78W	g	CSIO02RR
0146	181104	0	ONBG	E	505	o	300m ms	IOD	34-24.05N	122-16.18W	g	CSIO02RR
0742	181104	0	ONBG	B	Bongo	OPC	77-60	IOD	34-43.74N	121-33.25W	g	CSIO02RR
0803	181104	0	ONBG	E	505	o	300m ms	IOD	34-44.10N	121-33.72W	g	CSIO02RR
0811	181104	0	ONBG	B	Bongo	LPC	77-60	IOD	34-44.28N	121-33.97W	g	CSIO02RR
0835	181104	0	ONBG	E	505	o	300m ms	IOD	34-44.64N	121-34.49W	g	CSIO02RR
1305	181104	0	ONBG	B	Bongo	OPC	77-55	IOD	34-53.66N	121-12.45W	g	CSIO02RR

1327	181104	0	ONBG	E	505	o	m	ms	IOD	34-53.98N	121-13.00W	g	CSIO02RR
1334	181104	0	ONBG	B	Bongo	LPC	77-55		IOD	34-54.05N	121-13.17W	g	CSIO02RR
1356	181104	0	ONBG	E	505	o	m	ms	IOD	34-54.36N	121-13.73W	g	CSIO02RR
1645	181104	0	ONBG	B	Bongo	OPC	77-51		IOD	35-01.43N	120-55.50W	g	CSIO02RR
1710	181104	0	ONBG	E	505	o	300m	ms	IOD	35-01.69N	120-56.04W	g	CSIO02RR
1957	181104	0	ONBG	B	Bongo	OPC	77-49		IOD	35-05.17N	120-46.91W	g	CSIO02RR
2005	181104	0	ONBG	E	505	o	100m	ms	IOD	35-05.13N	120-47.10W	g	CSIO02RR
0747	191104	0	ONBG	B	Bongo	OPC	85.4-35.8		IOD	34-00.27N	118-50.16W	g	CSIO02RR
0753	191104	0	ONBG	E	505	o	m	ms	IOD	34-00.10N	118-50.16W	g	CSIO02RR
1025	191104	0	ONBG	B	Bongo	OPC	86.8-32.5		IOD	33-53.37N	118-26.54W	g	CSIO02RR
1026	191104	0	ONBG	E	505	o	20m	ms	IOD	33-53.35N	118-26.56W	g	CSIO02RR
1633	191104	0	ONBG	B	Bongo	OPC	91.7-26.4		IOD	33-14.64N	117-27.98W	g	CSIO02RR
1635	191104	0	ONBG	E	505	o	20m	ms	IOD	33-14.67N	117-28.05W	g	CSIO02RR

**** Open Net - Vertical Tow ****

**** Samples shared by IOD and NMFS ****

2043	021104	0	ONVT	B	Paironet	93.3-26.7			IOD	32-57.40N	117-18.29W	g	CSIO02RR
2045	021104	0	ONVT	E	150	v	30m		IOD	32-57.40N	117-18.29W	g	CSIO02RR
0215	031104	0	ONVT	B	Paironet	93.3-28			IOD	32-54.80N	117-23.70W	g	CSIO02RR
0224	031104	0	ONVT	E	150	v	70m		IOD	32-54.80N	117-23.70W	g	CSIO02RR
1005	031104	0	ONVT	B	Paironet	93.3-35			IOD	32-40.80N	117-52.38W	g	CSIO02RR
1010	031104	0	ONVT	E	150	v	30m		IOD	32-40.79N	117-52.38W	g	CSIO02RR
1356	031104	0	ONVT	B	Paironet	93.3-40			IOD	32-30.81N	118-12.80W	g	CSIO02RR
1402	031104	0	ONVT	E	150	v	30m		IOD	32-30.81N	118-12.80W	g	CSIO02RR
1923	031104	0	ONVT	B	Paironet	93.3-45			IOD	32-20.79N	118-33.30W	g	CSIO02RR
1926	031104	0	ONVT	E	150	v	70m		IOD	32-20.79N	118-33.30W	g	CSIO02RR
0007	041104	0	ONVT	B	Paironet	93.3-50			IOD	32-10.80N	118-53.59W	g	CSIO02RR
0012	041104	0	ONVT	E	150	v	70m		IOD	32-10.80N	118-53.60W	g	CSIO02RR
0625	041104	0	ONVT	B	Paironet	93.3-55			IOD	32-00.80N	119-14.00W	g	CSIO02RR
0632	041104	0	ONVT	E	150	v	70m		IOD	32-00.80N	119-13.99W	g	CSIO02RR
1112	041104	0	ONVT	B	Paironet	93.3-60			IOD	31-50.80N	119-34.30W	g	CSIO02RR
1118	041104	0	ONVT	E	150	v	70m		IOD	31-50.80N	119-34.30W	g	CSIO02RR
1545	041104	0	ONVT	B	Paironet	93.3-70			IOD	31-30.82N	120-14.77W	g	CSIO02RR
1550	041104	0	ONVT	E	150	v	70m		IOD	31-30.81N	120-14.77W	g	CSIO02RR
0824	081104	0	ONVT	B	Paironet	90-70			IOD	32-05.09N	120-38.30W	g	CSIO02RR
0826	081104	0	ONVT	E	150	v	70m		IOD	32-05.09N	120-38.30W	g	CSIO02RR
1417	081104	0	ONVT	B	Paironet	90-60			IOD	32-25.10N	119-57.58W	g	CSIO02RR
1420	081104	0	ONVT	E	150	v	70m		IOD	32-25.10N	119-57.59W	g	CSIO02RR
2017	081104	0	ONVT	B	Paironet	90-53.3			IOD	32-39.09N	119-28.83W	g	CSIO02RR
2020	081104	0	ONVT	E	150	v	70m		IOD	32-39.09N	119-28.83W	g	CSIO02RR
0238	091104	0	ONVT	B	Paironet	90-45			IOD	32-55.11N	118-56.11W	g	CSIO02RR
0243	091104	0	ONVT	E	150	v	70m		IOD	32-55.11N	118-56.11W	g	CSIO02RR
0825	091104	0	ONVT	B	Paironet	90-37			IOD	33-11.10N	118-23.19W	g	CSIO02RR
0826	091104	0	ONVT	E	150	v	70m		IOD	33-11.10N	118-23.19W	g	CSIO02RR
1142	091104	0	ONVT	B	Paironet	90-35			IOD	33-15.10N	118-15.00W	g	CSIO02RR
1144	091104	0	ONVT	E	150	v	70m		IOD	33-15.10N	118-15.00W	g	CSIO02RR
1528	091104	0	ONVT	B	Paironet	90-30			IOD	33-25.11N	117-54.30W	g	CSIO02RR
1532	091104	0	ONVT	E	150	v	70m		IOD	33-25.11N	117-54.30W	g	CSIO02RR
1825	091104	0	ONVT	B	Paironet	90-28			IOD	33-29.09N	117-46.10W	g	CSIO02RR
1827	091104	0	ONVT	E	150	v	60m		IOD	33-29.09N	117-46.10W	g	CSIO02RR
0315	101104	0	ONVT	B	Paironet	87-33			IOD	33-53.40N	118-29.40W	g	CSIO02RR
0319	101104	0	ONVT	E	150	v	50m		IOD	33-53.40N	118-29.40W	g	CSIO02RR
0651	101104	0	ONVT	B	Paironet	87-35			IOD	33-49.39N	118-37.68W	g	CSIO02RR
0655	101104	0	ONVT	E	150	v	70m		IOD	33-49.39N	118-37.68W	g	CSIO02RR
1110	101104	0	ONVT	B	Paironet	87-40			IOD	33-39.41N	118-58.50W	g	CSIO02RR
1115	101104	0	ONVT	E	150	v	70m		IOD	33-39.40N	118-58.49W	g	CSIO02RR
1445	101104	0	ONVT	B	Paironet	87-45			IOD	33-29.40N	119-19.10W	g	CSIO02RR
1447	101104	0	ONVT	E	150	v	70m		IOD	33-29.40N	119-19.09W	g	CSIO02RR
2252	101104	0	ONVT	B	Paironet	87-55			IOD	33-09.40N	120-00.40W	g	CSIO02RR
2253	101104	0	ONVT	E	150	v	70m		IOD	33-09.40N	120-00.40W	g	CSIO02RR
0333	111104	0	ONVT	B	Paironet	87-60			IOD	32-59.40N	120-21.00W	g	CSIO02RR
0337	111104	0	ONVT	E	150	v	70m		IOD	32-59.40N	120-21.00W	g	CSIO02RR
0923	111104	0	ONVT	B	Paironet	87-70			IOD	32-39.40N	121-01.99W	g	CSIO02RR
0924	111104	0	ONVT	E	150	v	70m		IOD	32-39.40N	121-01.99W	g	CSIO02RR
1930	131104	0	ONVT	B	Paironet	83-70			IOD	33-14.70N	121-26.59W	g	CSIO02RR
1933	131104	0	ONVT	E	150	v	70m		IOD	33-14.70N	121-26.60W	g	CSIO02RR
0150	141104	0	ONVT	B	Paironet	83-60			IOD	33-34.70N	120-45.30W	g	CSIO02RR

0151	141104	0	ONVT	E	150 v	70m	IOD	33-34.70N	120-45.30W	g	CSIO02RR
0706	141104	0	ONVT	B	Pairovet	83-55	IOD	33-44.70N	120-24.59W	g	CSIO02RR
0710	141104	0	ONVT	E	150 v	70m	IOD	33-44.70N	120-24.59W	g	CSIO02RR
1048	141104	0	ONVT	B	Pairovet	83-51	IOD	33-52.70N	120-08.00W	g	CSIO02RR
1050	141104	0	ONVT	E	150 v	70m	IOD	33-52.70N	120-08.00W	g	CSIO02RR
1615	141104	0	ONVT	B	Pairovet	83-42	IOD	34-10.70N	119-30.51W	g	CSIO02RR
1620	141104	0	ONVT	E	150 v	70m	IOD	34-10.72N	119-30.53W	g	CSIO02RR
1901	141104	0	ONVT	B	Pairovet	83-40.6	IOD	34-13.50N	119-24.70W	g	CSIO02RR
1902	141104	0	ONVT	E	150 v	30m	IOD	34-13.50N	119-24.70W	g	CSIO02RR
0548	151104	0	ONVT	B	Pairovet	81.8-46.9	IOD	34-16.50N	120-01.50W	g	CSIO02RR
0553	151104	0	ONVT	E	150 v	m	IOD	34-16.51N	120-01.50W	g	CSIO02RR
1215	151104	0	ONVT	B	Pairovet	80-51	IOD	34-27.01N	120-31.39W	g	CSIO02RR
1219	151104	0	ONVT	E	150 v	70m	IOD	34-27.01N	120-31.39W	g	CSIO02RR
1556	151104	0	ONVT	B	Pairovet	80-55	IOD	34-19.00N	120-48.10W	g	CSIO02RR
1601	151104	0	ONVT	E	150 v	70m	IOD	34-19.00N	120-48.10W	g	CSIO02RR
2021	151104	0	ONVT	B	Pairovet	80-60	IOD	34-09.00N	121-08.99W	g	CSIO02RR
2026	151104	0	ONVT	E	150 v	70m	IOD	34-09.00N	121-09.00W	g	CSIO02RR
0210	161104	0	ONVT	B	Pairovet	80-70	IOD	33-49.00N	121-50.59W	g	CSIO02RR
0215	161104	0	ONVT	E	150 v	70m	IOD	33-49.00N	121-50.59W	g	CSIO02RR
0029	181104	0	ONVT	B	Pairovet	77-70	IOD	34-23.32N	122-14.81W	g	CSIO02RR
0032	181104	0	ONVT	E	150 v	70m	IOD	34-23.32N	122-14.81W	g	CSIO02RR
0706	181104	0	ONVT	B	Pairovet	77-60	IOD	34-43.30N	121-32.90W	g	CSIO02RR
0710	181104	0	ONVT	E	150 v	70m	IOD	34-43.30N	121-32.90W	g	CSIO02RR
0714	181104	0	ONVT	B	Pairovet	77-60	IOD	34-43.30N	121-32.89W	g	CSIO02RR
0717	181104	0	ONVT	E	150 v	70m	IOD	34-43.30N	121-32.89W	g	CSIO02RR
1239	181104	0	ONVT	B	Pairovet	77-55	IOD	34-53.30N	121-11.90W	g	CSIO02RR
1241	181104	0	ONVT	E	150 v	50m	IOD	34-53.30N	121-11.90W	g	CSIO02RR
1621	181104	0	ONVT	B	Pairovet	77 -51	IOD	35-01.29N	120-55.09W	g	CSIO02RR
1622	181104	0	ONVT	E	150 v	70m	IOD	35-01.29N	120-55.09W	g	CSIO02RR
1930	181104	0	ONVT	B	Pairovet	77-49	IOD	35-05.30N	120-46.59W	g	CSIO02RR
1933	181104	0	ONVT	E	150 v	50m	IOD	35-05.30N	120-46.60W	g	CSIO02RR

#*** Optical Free Fall Samples ***

2205	021104	0	OPXX	B	PRR		SIO	32-56.62N	117-18.98W	g	CSIO02RR
2230	021104	0	OPXX	E	Optical free fall		SIO	32-56.66N	117-18.47W	g	CSIO02RR
1730	031104	0	OPXX	B	PRR		SIO	32-20.79N	118-33.30W	g	CSIO02RR
1745	031104	0	OPXX	E	Optical free fall		SIO	32-20.79N	118-33.30W	g	CSIO02RR
1700	041104	0	OPXX	B	PRR		SIO	31-31.38N	120-15.83W	g	CSIO02RR
1726	041104	0	OPXX	E	Optical free fall		SIO	31-31.38N	120-15.82W	g	CSIO02RR
1730	051104	0	OPXX	B	PRR		SIO	30-29.85N	122-16.08W	g	CSIO02RR
1738	051104	0	OPXX	E	Optical free fall		SIO	30-29.86N	122-16.09W	g	CSIO02RR
1800	061104	0	OPXX	B	PRR		SIO	30-25.10N	123-59.91W	g	CSIO02RR
1810	061104	0	OPXX	E	Optical free fall		SIO	30-25.10N	123-59.91W	g	CSIO02RR
1818	071104	0	OPXX	B	PRR90-90		SIO	31-25.10N	121-59.38W	g	CSIO02RR
1823	071104	0	OPXX	E	Optical free fall		SIO	31-25.10N	121-59.38W	g	CSIO02RR
1825	081104	0	OPXX	B	PRR90-53.3		SIO	32-39.09N	119-28.83W	g	CSIO02RR
1839	081104	0	OPXX	E	Optical free fall		SIO	32-39.09N	119-28.83W	g	CSIO02RR
1752	091104	0	OPXX	B	PRR90-28		SIO	33-29.09N	117-46.10W	g	CSIO02RR
1814	091104	0	OPXX	E	Optical free fall		SIO	33-29.09N	117-46.10W	g	CSIO02RR
2129	101104	0	OPXX	B	PRR		SIO	33-09.40N	120-00.40W	g	CSIO02RR
2139	101104	0	OPXX	E	Optical free fall		SIO	33-09.40N	120-00.40W	g	CSIO02RR
1722	111104	0	OPXX	B	PRR87-80		SIO	32-19.41N	121-42.89W	g	CSIO02RR
1737	111104	0	OPXX	E	Optical free fall		SIO	32-19.41N	121-42.89W	g	CSIO02RR
1733	121104	0	OPXX	B	PRR	83-110	SIO	31-54.72N	124-10.19W	g	CSIO02RR
1807	121104	0	OPXX	E	Optical free fall		SIO	31-54.72N	124-10.19W	g	CSIO02RR
1745	131104	0	OPXX	B	PRR83-70		SIO	33-14.70N	121-26.59W	g	CSIO02RR
1801	131104	0	OPXX	E	Optical free fall		SIO	33-14.70N	121-26.60W	g	CSIO02RR
1840	141104	0	OPXX	B	PRR	83-40.6	SIO	34-13.50N	119-24.70W	g	CSIO02RR
1935	141104	0	OPXX	E	Optical free fall		SIO	34-13.44N	119-25.59W	g	CSIO02RR
1842	151104	0	OPXX	B	PRR	80-60	SIO	34-08.99N	121-09.01W	g	CSIO02RR
1903	151104	0	OPXX	E	Optical free fall		SIO	34-08.99N	121-08.99W	g	CSIO02RR
1659	161104	0	OPXX	B	PRR	80-90	SIO	33-09.00N	123-13.29W	g	CSIO02RR
1710	161104	0	OPXX	E	Optical free fall		SIO	33-09.00N	123-13.26W	g	CSIO02RR
1657	171104	0	OPXX	B	PRR	77-80	SIO	34-03.30N	122-56.49W	g	CSIO02RR
1713	171104	0	OPXX	E	Optical free fall		SIO	34-03.30N	122-56.49W	g	CSIO02RR
1815	181104	0	OPXX	B	PRR	77-49	SIO	35-05.30N	120-46.60W	g	CSIO02RR
1829	181104	0	OPXX	E	Optical free fall		SIO	35-05.30N	120-46.60W	g	CSIO02RR

#*** Secchi Disks ***

1933	021104	0	SECD	B	Secchi	93.3-26.7	IOD	32-57.40N	117-18.30W	g	CSIO02RR
1942	021104	0	SECD	E			IOD	32-57.40N	117-18.30W	g	CSIO02RR
2356	021104	0	SECD	B	Secchi	93.3-45	IOD	32-57.27N	117-17.58W	g	CSIO02RR
0005	031104	0	SECD	E			IOD	32-57.11N	117-17.97W	g	CSIO02RR
2022	031104	0	SECD	B	Secchi	93.3-45	IOD	32-21.08N	118-34.68W	g	CSIO02RR
2028	031104	0	SECD	E			IOD	32-21.03N	118-34.65W	g	CSIO02RR
2357	031104	0	SECD	B	Secchi		20m IOD	32-10.80N	118-53.59W	g	CSIO02RR
0004	041104	0	SECD	E			IOD	32-10.80N	118-53.59W	g	CSIO02RR
1644	041104	0	SECD	B	Secchi	93.3-70	IOD	31-31.38N	120-15.83W	g	CSIO02RR
1650	041104	0	SECD	E			IOD	31-31.38N	120-15.83W	g	CSIO02RR
1704	051104	0	SECD	B	Secchi	93.3-100	IOD	30-29.86N	122-16.08W	g	CSIO02RR
1710	051104	0	SECD	E			IOD	30-29.83N	122-16.07W	g	CSIO02RR
0002	061104	0	SECD	B	Secchi	93.3-110	IOD	30-10.83N	122-55.42W	g	CSIO02RR
0016	061104	0	SECD	E			33m IOD	30-10.83N	122-55.41W	g	CSIO02RR
1731	061104	0	SECD	B	Secchi	90-120	IOD	30-25.10N	123-59.91W	g	CSIO02RR
1740	061104	0	SECD	E			IOD	30-25.10N	123-59.91W	g	CSIO02RR
2344	061104	0	SECD	B	Secchi	90-110	IOD	30-45.10N	123-19.90W	g	CSIO02RR
2348	061104	0	SECD	E			26.9m IOD	30-45.08N	123-19.91W	g	CSIO02RR
1745	071104	0	SECD	B	Secchi	90-90	IOD	31-25.10N	121-59.38W	g	CSIO02RR
1758	071104	0	SECD	E			IOD	31-25.10N	121-59.38W	g	CSIO02RR
1811	081104	0	SECD	B	Secchi	90-53.3	IOD	32-39.09N	119-28.83W	g	CSIO02RR
1817	081104	0	SECD	E			IOD	32-39.09N	119-28.83W	g	CSIO02RR
1522	091104	0	SECD	B	Secchi	90-30	IOD	33-25.11N	117-54.30W	g	CSIO02RR
1526	091104	0	SECD	E			IOD	33-25.11N	117-54.30W	g	CSIO02RR
1741	091104	0	SECD	B	Secchi	90-28	IOD	33-29.09N	117-46.10W	g	CSIO02RR
1745	091104	0	SECD	E			IOD	33-29.09N	117-46.10W	g	CSIO02RR
2055	091104	0	SECD	B	Secchi	90-27.7	IOD	33-29.67N	117-44.90W	g	CSIO02RR
2058	091104	0	SECD	E			IOD	33-29.67N	117-44.91W	g	CSIO02RR
2319	091104	0	SECD	B	Secchi	88.5-30.1	IOD	33-40.35N	118-05.64W	g	CSIO02RR
2321	091104	0	SECD	E			IOD	33-40.35N	118-05.64W	g	CSIO02RR
1539	101104	0	SECD	B	Secchi	87-45	IOD	33-29.76N	119-20.52W	g	CSIO02RR
1544	101104	0	SECD	E			IOD	33-29.76N	119-20.53W	g	CSIO02RR
2244	101104	0	SECD	B	Secchi	87-55	IOD	33-09.40N	120-00.40W	g	CSIO02RR
2250	101104	0	SECD	E			IOD	33-09.40N	120-00.40W	g	CSIO02RR
1652	111104	0	SECD	B	Secchi	87-80	IOD	32-19.41N	121-42.89W	g	CSIO02RR
1700	111104	0	SECD	E			IOD	32-19.41N	121-42.89W	g	CSIO02RR
2325	111104	0	SECD	B	Secchi	87-90	IOD	31-59.40N	122-23.59W	g	CSIO02RR
2331	111104	0	SECD	E			IOD	31-59.40N	122-23.59W	g	CSIO02RR
1718	121104	0	SECD	B	Secchi	83-110	IOD	31-54.72N	124-10.19W	g	CSIO02RR
1726	121104	0	SECD	E			IOD	31-54.72N	124-10.19W	g	CSIO02RR
2353	121104	0	SECD	B	Secchi	83-100	IOD	32-14.70N	123-29.49W	g	CSIO02RR
0003	131104	0	SECD	E			IOD	32-14.71N	123-29.51W	g	CSIO02RR
1730	131104	0	SECD	B	Secchi	83-70	IOD	33-14.69N	121-26.61W	g	CSIO02RR
1736	131104	0	SECD	E			IOD	33-14.70N	121-26.59W	g	CSIO02RR
1607	141104	0	SECD	B	Secchi	83-42	IOD	34-10.70N	119-30.51W	g	CSIO02RR
1613	141104	0	SECD	E			IOD	34-10.70N	119-30.51W	g	CSIO02RR
1816	141104	0	SECD	B	Secchi	83-40.6	IOD	34-13.51N	119-24.70W	g	CSIO02RR
1820	141104	0	SECD	E			IOD	34-13.50N	119-24.70W	g	CSIO02RR
2120	141104	0	SECD	B	Secchi	83-39.4	IOD	34-15.53N	119-19.44W	g	CSIO02RR
2124	141104	0	SECD	E			IOD	34-15.53N	119-19.44W	g	CSIO02RR
1551	151104	0	SECD	B	Secchi	80-55	IOD	34-19.00N	120-48.10W	g	CSIO02RR
1554	151104	0	SECD	E			IOD	34-19.00N	120-48.09W	g	CSIO02RR
1836	151104	0	SECD	B	Secchi	80-60	IOD	34-08.98N	121-09.03W	g	CSIO02RR
1839	151104	0	SECD	E			IOD	34-08.98N	121-09.02W	g	CSIO02RR
1636	161104	0	SECD	B	Secchi	80-90	IOD	33-09.01N	123-13.29W	g	CSIO02RR
1641	161104	0	SECD	E			IOD	33-09.00N	123-13.29W	g	CSIO02RR
2312	161104	0	SECD	B	Secchi	80-100	IOD	32-49.02N	123-54.48W	g	CSIO02RR
2321	161104	0	SECD	E			IOD	32-49.02N	123-54.48W	g	CSIO02RR
1646	171104	0	SECD	B	Secchi	77-80	IOD	34-03.30N	122-56.48W	g	CSIO02RR
1652	171104	0	SECD	E			IOD	34-03.30N	122-56.49W	g	CSIO02RR
0024	181104	0	SECD	B	Secchi	77-80	IOD	34-23.32N	122-14.81W	g	CSIO02RR
0028	181104	0	SECD	E			IOD	34-23.32N	122-14.81W	g	CSIO02RR
1615	181104	0	SECD	B	Secchi	77-51	IOD	35-01.29N	120-55.09W	g	CSIO02RR
1618	181104	0	SECD	E			IOD	35-01.29N	120-55.08W	g	CSIO02RR
1808	181104	0	SECD	B	Secchi	77-49	IOD	35-05.31N	120-46.59W	g	CSIO02RR

1814 181104 0 SECD E IOD 35-05.30N 120-46.60W g CSIO02RR

**** Surface Nets - Manta Tows ****

**** Samples shared by IOD and NMFS ****

2057	021104	0	SNNU	B	Manta	Tow	93.3-26.7	IOD	32-57.36N	117-18.35W	g	CSIO02RR
2114	021104	0	SNNU	E	505 h			IOD	32-57.12N	117-18.74W	g	CSIO02RR
0230	031104	0	SNNU	B	Manta	Tow	93.3-28	IOD	32-54.80N	117-23.77W	g	CSIO02RR
0246	031104	0	SNNU	E	505 h			IOD	32-54.88N	117-24.20W	g	CSIO02RR
1018	031104	0	SNNU	B	Manta	Tow	93.3-35	IOD	32-40.79N	117-52.41W	g	CSIO02RR
1036	031104	0	SNNU	E	505 h			IOD	32-40.72N	117-53.00W	g	CSIO02RR
1409	031104	0	SNNU	B	Manta	Tow	93.3-40	IOD	32-30.86N	118-12.93W	g	CSIO02RR
1424	031104	0	SNNU	E	505 h			IOD	32-31.02N	118-13.40W	g	CSIO02RR
1929	031104	0	SNNU	B	Manta	Tow	93.3-45	IOD	32-20.79N	118-33.30W	g	CSIO02RR
1945	031104	0	SNNU	E	505 h			IOD	32-20.90N	118-33.74W	g	CSIO02RR
0021	041104	0	SNNU	B	Manta	Tow	93.3-50	IOD	32-10.70N	118-53.62W	g	CSIO02RR
0037	041104	0	SNNU	E	505 h			IOD	32-10.68N	118-53.88W	g	CSIO02RR
0641	041104	0	SNNU	B	Manta	Tow	93.3-55	IOD	32-00.81N	119-14.08W	g	CSIO02RR
0656	041104	0	SNNU	E	505 h			IOD	32-00.86N	119-14.55W	g	CSIO02RR
1123	041104	0	SNNU	B	Manta	Tow	93.3-60	IOD	31-50.81N	119-34.35W	g	CSIO02RR
1138	041104	0	SNNU	E	505 h			IOD	31-50.91N	119-34.91W	g	CSIO02RR
1552	041104	0	SNNU	B	Manta	Tow	93.3-70	IOD	31-30.82N	120-14.77W	g	CSIO02RR
1610	041104	0	SNNU	E	505 h			IOD	31-31.04N	120-15.14W	g	CSIO02RR
0605	051104	0	SNNU	B	Manta	Tow	93.3-80	IOD	31-10.68N	120-55.34W	g	CSIO02RR
0622	051104	0	SNNU	E	505 h			IOD	31-10.40N	120-55.62W	g	CSIO02RR
1201	051104	0	SNNU	B	Manta	Tow	93.3-90	IOD	30-50.77N	121-35.50W	g	CSIO02RR
1217	051104	0	SNNU	E	505 h			IOD	30-50.60N	121-35.80W	g	CSIO02RR
1612	051104	0	SNNU	B	Manta	Tow	93.3-100	IOD	30-30.77N	122-15.55W	g	CSIO02RR
1632	051104	0	SNNU	E	505 h			IOD	30-30.44N	122-15.96W	g	CSIO02RR
0019	061104	0	SNNU	B	Manta	Tow	93.3-110	IOD	30-10.82N	122-55.48W	g	CSIO02RR
0035	061104	0	SNNU	E	505 h			IOD	30-10.72N	122-55.83W	g	CSIO02RR
1005	061104	0	SNNU	B	Manta	Tow	93.3-120	IOD	29-50.81N	123-35.23W	g	CSIO02RR
1022	061104	0	SNNU	E	505 h			IOD	29-50.84N	123-35.59W	g	CSIO02RR
1439	061104	0	SNNU	B	Manta	Tow	90-120	IOD	30-25.07N	123-59.88W	g	CSIO02RR
1455	061104	0	SNNU	E	505 h			IOD	30-25.02N	124-00.41W	g	CSIO02RR
2355	061104	0	SNNU	B	Manta	Tow	90-110	IOD	30-45.06N	123-19.95W	g	CSIO02RR
0011	071104	0	SNNU	E	505 h			IOD	30-45.06N	123-20.36W	g	CSIO02RR
0703	071104	0	SNNU	B	Manta	Tow	90-100	IOD	31-05.20N	122-39.63W	g	CSIO02RR
0719	071104	0	SNNU	E	505 h			IOD	31-05.45N	122-39.44W	g	CSIO02RR
1937	071104	0	SNNU	B	Manta	Tow	90-90	IOD	31-25.11N	121-59.44W	g	CSIO02RR
1953	071104	0	SNNU	E	505 h			IOD	31-25.15N	121-59.79W	g	CSIO02RR
0156	081104	0	SNNU	B	Manta	Tow	90-80	IOD	31-45.10N	121-19.03W	g	CSIO02RR
0213	081104	0	SNNU	E	505 h			IOD	31-45.12N	121-19.48W	g	CSIO02RR
0832	081104	0	SNNU	B	Manta	Tow	90-70	IOD	32-05.11N	120-38.32W	g	CSIO02RR
0848	081104	0	SNNU	E	505 h			IOD	32-05.39N	120-38.66W	g	CSIO02RR
1424	081104	0	SNNU	B	Manta	Tow	90-60	IOD	32-25.12N	119-57.60W	g	CSIO02RR
1440	081104	0	SNNU	E	505 h			IOD	32-25.43N	119-57.91W	g	CSIO02RR
2028	081104	0	SNNU	B	Manta	Tow	90-53.3	IOD	32-39.09N	119-28.86W	g	CSIO02RR
2042	081104	0	SNNU	E	505 h			IOD	32-39.17N	119-29.30W	g	CSIO02RR
0249	091104	0	SNNU	B	Manta	Tow	90-45	IOD	32-55.11N	118-56.14W	g	CSIO02RR
0304	091104	0	SNNU	E	505 h			IOD	32-55.19N	118-56.52W	g	CSIO02RR
0832	091104	0	SNNU	B	Manta	Tow	90-37	IOD	33-11.11N	118-23.20W	g	CSIO02RR
0846	091104	0	SNNU	E	505 h			IOD	33-11.43N	118-23.31W	g	CSIO02RR
1149	091104	0	SNNU	B	Manta	Tow	90-35	IOD	33-15.10N	118-15.02W	g	CSIO02RR
1205	091104	0	SNNU	E	505 h			IOD	33-15.14N	118-15.43W	g	CSIO02RR
1535	091104	0	SNNU	B	Manta	Tow	90-30	IOD	33-25.11N	117-54.32W	g	CSIO02RR
1549	091104	0	SNNU	E	505 h			IOD	33-25.10N	117-54.70W	g	CSIO02RR
1833	091104	0	SNNU	B	Manta	Tow	90-28	IOD	33-29.10N	117-46.10W	g	CSIO02RR
1850	091104	0	SNNU	E	505 h			IOD	33-29.37N	117-46.63W	g	CSIO02RR
0325	101104	0	SNNU	B	Manta	Tow	87-33	IOD	33-53.40N	118-29.48W	g	CSIO02RR
0339	101104	0	SNNU	E	505 h			IOD	33-53.37N	118-29.84W	g	CSIO02RR
0701	101104	0	SNNU	B	Manta	Tow	87-33	IOD	33-49.43N	118-37.77W	g	CSIO02RR
0716	101104	0	SNNU	E	505 h			IOD	33-49.58N	118-38.15W	g	CSIO02RR
1117	101104	0	SNNU	B	Manta	Tow	87-40	IOD	33-39.40N	118-58.50W	g	CSIO02RR
1133	101104	0	SNNU	E	505 h			IOD	33-39.49N	118-59.11W	g	CSIO02RR
1450	101104	0	SNNU	B	Manta	Tow	87-45	IOD	33-29.41N	119-19.11W	g	CSIO02RR
1505	101104	0	SNNU	E	505 h			IOD	33-29.56N	119-19.63W	g	CSIO02RR
0341	111104	0	SNNU	B	Manta	Tow	87-60	IOD	32-59.42N	120-21.05W	g	CSIO02RR

0356	111104	0	SNNU	E	505	h			IOD	32-59.57N	120-21.52W	g	CSIO02RR
0929	111104	0	SNNU	B	Manta	Tow	87-70		IOD	32-39.40N	121-02.01W	g	CSIO02RR
0943	111104	0	SNNU	E	505	h			IOD	32-39.41N	121-02.40W	g	CSIO02RR
1442	111104	0	SNNU	B	Manta	Tow	87-80		IOD	32-19.26N	121-41.93W	g	CSIO02RR
1456	111104	0	SNNU	E	505	h			IOD	32-19.33N	121-42.35W	g	CSIO02RR
2335	111104	0	SNNU	B	Manta	Tow	87-90		IOD	31-59.40N	122-23.62W	g	CSIO02RR
2350	111104	0	SNNU	E	505	h			IOD	31-59.42N	122-23.85W	g	CSIO02RR
0521	121104	0	SNNU	B	Manta	Tow	87-100		IOD	31-39.43N	123-04.22W	g	CSIO02RR
0535	121104	0	SNNU	E	505	h			IOD	31-39.59N	123-04.41W	g	CSIO02RR
1100	121104	0	SNNU	B	Manta	Tow	87-110		IOD	31-19.44N	123-44.61W	g	CSIO02RR
1115	121104	0	SNNU	E	505	h			IOD	31-19.72N	123-44.76W	g	CSIO02RR
1532	121104	0	SNNU	B	Manta	Tow	83-110		IOD	31-54.70N	124-10.22W	g	CSIO02RR
1549	121104	0	SNNU	E	505	h			IOD	31-55.07N	124-10.18W	g	CSIO02RR
0004	131104	0	SNNU	B	Manta	Tow	83-100		IOD	32-14.71N	123-29.53W	g	CSIO02RR
0020	131104	0	SNNU	E	505	h			IOD	32-14.76N	123-29.93W	g	CSIO02RR
0634	131104	0	SNNU	B	Manta	Tow	83-90		IOD	32-34.73N	122-48.71W	g	CSIO02RR
0650	131104	0	SNNU	E	505	h			IOD	32-34.92N	122-48.83W	g	CSIO02RR
1237	131104	0	SNNU	B	Manta	Tow	83-90		IOD	32-54.77N	122-07.76W	g	CSIO02RR
1252	131104	0	SNNU	E	505	h			IOD	32-55.06N	122-08.00W	g	CSIO02RR
1937	131104	0	SNNU	B	Manta	Tow	83-70		IOD	33-14.74N	121-26.59W	g	CSIO02RR
1952	131104	0	SNNU	E	505	h			IOD	33-15.05N	121-26.49W	g	CSIO02RR
0158	141104	0	SNNU	B	Manta	Tow	83-60		IOD	33-34.69N	120-45.29W	g	CSIO02RR
0214	141104	0	SNNU	E	505	h			IOD	33-34.97N	120-45.38W	g	CSIO02RR
0717	141104	0	SNNU	B	Manta	Tow	83-55		IOD	33-44.76N	120-24.63W	g	CSIO02RR
0732	141104	0	SNNU	E	505	h			IOD	33-45.07N	120-24.83W	g	CSIO02RR
1056	141104	0	SNNU	B	Manta	Tow	83-51		IOD	33-52.70N	120-07.99W	g	CSIO02RR
1111	141104	0	SNNU	E	505	h			IOD	33-52.70N	120-07.48W	g	CSIO02RR
1622	141104	0	SNNU	B	Manta	Tow	83-42		IOD	34-10.76N	119-30.63W	g	CSIO02RR
1638	141104	0	SNNU	E	505	h			IOD	34-10.92N	119-31.08W	g	CSIO02RR
1905	141104	0	SNNU	B	Manta	Tow	83-40.6		IOD	34-13.50N	119-24.72W	g	CSIO02RR
1920	141104	0	SNNU	E	505	h			IOD	34-13.47N	119-25.18W	g	CSIO02RR
0559	151104	0	SNNU	B	Manta	Tow	81.8-46.9		IOD	34-16.55N	120-01.55W	g	CSIO02RR
0614	151104	0	SNNU	E	505	h			IOD	34-16.86N	120-01.98W	g	CSIO02RR
1222	151104	0	SNNU	B	Manta	Tow	80-51		IOD	34-26.99N	120-31.45W	g	CSIO02RR
1237	151104	0	SNNU	E	505	h			IOD	34-26.85N	120-31.86W	g	CSIO02RR
1604	151104	0	SNNU	B	Manta	Tow	80-55		IOD	34-19.04N	120-48.14W	g	CSIO02RR
1618	151104	0	SNNU	E	505	h			IOD	34-19.28N	120-48.42W	g	CSIO02RR
2031	151104	0	SNNU	B	Manta	Tow	80-60		IOD	34-09.00N	121-09.02W	g	CSIO02RR
2046	151104	0	SNNU	E	505	h			IOD	34-09.12N	121-09.54W	g	CSIO02RR
0219	161104	0	SNNU	B	Manta	Tow	80-70		IOD	33-49.03N	121-50.64W	g	CSIO02RR
0234	161104	0	SNNU	E	505	h			IOD	33-49.30N	121-51.05W	g	CSIO02RR
0815	161104	0	SNNU	B	Manta	Tow	80-80		IOD	33-29.01N	122-32.00W	g	CSIO02RR
0831	161104	0	SNNU	E	505	h			IOD	33-29.38N	122-32.51W	g	CSIO02RR
1352	161104	0	SNNU	B	Manta	Tow	80-90		IOD	33-09.01N	123-13.31W	g	CSIO02RR
1406	161104	0	SNNU	E	505	h			IOD	33-09.11N	123-13.40W	g	CSIO02RR
2325	161104	0	SNNU	B	Manta	Tow	80-100		IOD	32-49.03N	123-54.51W	g	CSIO02RR
2341	161104	0	SNNU	E	505	h			IOD	32-49.26N	123-54.98W	g	CSIO02RR
0501	171104	0	SNNU	B	Manta	Tow	77-100		IOD	33-23.41N	124-19.52W	g	CSIO02RR
0512	171104	0	SNNU	E	505	h			IOD	33-23.59N	124-19.71W	g	CSIO02RR
1050	171104	0	SNNU	B	Manta	Tow	77-90		IOD	33-43.36N	123-37.99W	g	CSIO02RR
1105	171104	0	SNNU	E	505	h			IOD	33-43.78N	123-38.01W	g	CSIO02RR
1836	171104	0	SNNU	B	Manta	Tow	77-80		IOD	34-03.39N	122-56.56W	g	CSIO02RR
1851	171104	0	SNNU	E	505	h			IOD	34-03.68N	122-56.77W	g	CSIO02RR
0035	181104	0	SNNU	B	Manta	Tow	77-70		IOD	34-23.32N	122-14.81W	g	CSIO02RR
0050	181104	0	SNNU	E	505	h			IOD	34-23.46N	122-15.08W	g	CSIO02RR
0722	181104	0	SNNU	B	Manta	Tow	77-60		IOD	34-43.36N	121-32.92W	g	CSIO02RR
0738	181104	0	SNNU	E	505	h			IOD	34-43.68N	121-33.17W	g	CSIO02RR
1245	181104	0	SNNU	B	Manta	Tow	77-55		IOD	34-53.31N	121-11.92W	g	CSIO02RR
1300	181104	0	SNNU	E	505	h			IOD	34-53.59N	121-12.34W	g	CSIO02RR
1628	181104	0	SNNU	B	Manta	Tow	77-51		IOD	35-01.36N	120-55.19W	g	CSIO02RR
1641	181104	0	SNNU	E	505	h			IOD	35-01.42N	120-55.43W	g	CSIO02RR
1936	181104	0	SNNU	B	Manta	Tow	77-49		IOD	35-05.30N	120-46.63W	g	CSIO02RR
1953	181104	0	SNNU	E	505	h			IOD	35-05.20N	120-46.87W	g	CSIO02RR

#*** Temperature, Depth, Conductivity ***

1949	021104	0	TDCT	B	CTD	01	93.3-26.7	64m	IOD	32-57.40N	117-18.30W	g	CSIO02RR
2009	021104	0	TDCT	E					IOD	32-57.40N	117-18.30W	g	CSIO02RR

2257	021104	0	TDCT	B	CTD	02	93.4-26.4	15m	IOD	32-57.24N	117-16.81W	g	CSIO02RR
2319	021104	0	TDCT	E					IOD	32-57.24N	117-16.81W	g	CSIO02RR
0046	031104	0	TDCT	B	CTD	03	93.3-28	515m	IOD	32-54.79N	117-23.69W	g	CSIO02RR
0202	031104	0	TDCT	E					IOD	32-54.80N	117-23.70W	g	CSIO02RR
0858	031104	0	TDCT	B	CTD	04	93.3-35	515m	IOD	32-40.80N	117-52.38W	g	CSIO02RR
0955	031104	0	TDCT	E					IOD	32-40.80N	117-52.38W	g	CSIO02RR
1250	031104	0	TDCT	B	CTD	05	93.3-40	515m	IOD	32-30.82N	118-12.81W	g	CSIO02RR
1350	031104	0	TDCT	E					IOD	32-30.81N	118-12.80W	g	CSIO02RR
1703	031104	0	TDCT	B	CTD	06	93.3-45	515m	IOD	32-20.79N	118-33.29W	g	CSIO02RR
1802	031104	0	TDCT	E					IOD	32-20.79N	118-33.30W	g	CSIO02RR
2234	031104	0	TDCT	B	CTD	07	93.3-50	515m	IOD	32-10.87N	118-53.61W	g	CSIO02RR
2350	031104	0	TDCT	E					IOD	32-10.80N	118-53.59W	g	CSIO02RR
0314	041104	0	TDCT	B	CTD	08	93.3-55	515m	IOD	32-00.78N	119-14.01W	g	CSIO02RR
0414	041104	0	TDCT	E					IOD	32-00.80N	119-14.00W	g	CSIO02RR
0510	041104	0	TDCT	B	CTD	09	93.3-55	1000m	IOD	32-00.80N	119-13.99W	g	CSIO02RR
0615	041104	0	TDCT	E					IOD	32-00.80N	119-13.99W	g	CSIO02RR
0953	041104	0	TDCT	B	CTD	10	93.3-60		IOD	31-50.80N	119-34.30W	g	CSIO02RR
1103	041104	0	TDCT	E					IOD	31-50.80N	119-34.30W	g	CSIO02RR
1656	041104	0	TDCT	B	CTD	11	93.3-70		IOD	31-31.38N	120-15.82W	g	CSIO02RR
1800	041104	0	TDCT	E					IOD	31-31.51N	120-15.62W	g	CSIO02RR
0000	051104	0	TDCT	B	CTD	12	93.3-80		IOD	31-06.88N	120-50.86W	g	CSIO02RR
0551	051104	0	TDCT	E					IOD	31-10.80N	120-55.20W	g	CSIO02RR
1036	051104	0	TDCT	B	CTD	13	93.3-90		IOD	30-50.79N	121-35.38W	g	CSIO02RR
1149	051104	0	TDCT	E					IOD	30-50.81N	121-35.40W	g	CSIO02RR
1716	051104	0	TDCT	B	CTD	14	93.3-100		IOD	30-29.83N	122-16.08W	g	CSIO02RR
1818	051104	0	TDCT	E					IOD	30-29.86N	122-16.09W	g	CSIO02RR
2243	051104	0	TDCT	B	CTD	15	93.3-110		IOD	30-10.83N	122-55.42W	g	CSIO02RR
2353	051104	0	TDCT	E					IOD	30-10.83N	122-55.42W	g	CSIO02RR
0852	061104	0	TDCT	B	CTD	16	93.3-120		IOD	29-50.81N	123-35.19W	g	CSIO02RR
0958	061104	0	TDCT	E					IOD	29-50.81N	123-35.19W	g	CSIO02RR
1747	061104	0	TDCT	B	CTD	17	90-120		IOD	30-25.10N	123-59.92W	g	CSIO02RR
1849	061104	0	TDCT	E					IOD	30-25.07N	123-59.94W	g	CSIO02RR
2227	061104	0	TDCT	B	CTD	18	90-110		IOD	30-45.10N	123-19.89W	g	CSIO02RR
2334	061104	0	TDCT	E					IOD	30-45.10N	123-19.89W	g	CSIO02RR
0513	071104	0	TDCT	B	CTD	19	90-100		IOD	31-05.09N	122-39.68W	g	CSIO02RR
0624	071104	0	TDCT	E					IOD	31-05.09N	122-39.67W	g	CSIO02RR
1622	071104	0	TDCT	B	CTD	20	90-90	1030m	IOD	31-25.10N	121-59.39W	g	CSIO02RR
1716	071104	0	TDCT	E					IOD	31-25.10N	121-59.39W	g	CSIO02RR
1802	071104	0	TDCT	B	CTD	21	90-90		IOD	31-25.10N	121-59.38W	g	CSIO02RR
1900	071104	0	TDCT	E					IOD	31-25.10N	121-59.39W	g	CSIO02RR
0040	081104	0	TDCT	B	CTD	22	90-80		IOD	31-45.07N	121-18.90W	g	CSIO02RR
0146	081104	0	TDCT	E					IOD	31-45.07N	121-18.88W	g	CSIO02RR
0727	081104	0	TDCT	B	CTD	23	90-70		IOD	32-05.10N	120-38.30W	g	CSIO02RR
0817	081104	0	TDCT	E					IOD	32-05.10N	120-38.30W	g	CSIO02RR
1322	081104	0	TDCT	B	CTD	24	90-60	500m	IOD	32-25.11N	119-57.58W	g	CSIO02RR
1412	081104	0	TDCT	E					IOD	32-25.10N	119-57.59W	g	CSIO02RR
1821	081104	0	TDCT	B	CTD	25	90-53.3	515m	IOD	32-39.08N	119-28.83W	g	CSIO02RR
1909	081104	0	TDCT	E					IOD	32-39.09N	119-28.83W	g	CSIO02RR
0103	091104	0	TDCT	B	CTD	26	90-45	515m	IOD	32-55.10N	118-56.11W	g	CSIO02RR
0227	091104	0	TDCT	E					IOD	32-55.10N	118-56.11W	g	CSIO02RR
0723	091104	0	TDCT	B	CTD	27	90-37	515m	IOD	33-11.09N	118-23.18W	g	CSIO02RR
0818	091104	0	TDCT	E					IOD	33-11.10N	118-23.20W	g	CSIO02RR
1048	091104	0	TDCT	B	CTD	28	90-35	200m	IOD	33-15.20N	118-14.96W	g	CSIO02RR
1136	091104	0	TDCT	E					IOD	33-15.10N	118-15.00W	g	CSIO02RR
1425	091104	0	TDCT	B		29	90-30		IOD	33-25.11N	117-54.29W	g	CSIO02RR
1517	091104	0	TDCT	E					IOD	33-25.11N	117-54.30W	g	CSIO02RR
1750	091104	0	TDCT	B	CTD	30	90-28		IOD	33-29.09N	117-46.10W	g	CSIO02RR
1820	091104	0	TDCT	E					IOD	33-29.09N	117-46.10W	g	CSIO02RR
2020	091104	0	TDCT	B	CTD	31	90-27.7	175m	IOD	33-29.67N	117-44.90W	g	CSIO02RR
2033	091104	0	TDCT	E					IOD	33-29.67N	117-44.90W	g	CSIO02RR
2300	091104	0	TDCT	B	CTD32	88.5-30.1			IOD	33-40.35N	118-05.64W	g	CSIO02RR
2315	091104	0	TDCT	E					IOD	33-40.35N	118-05.64W	g	CSIO02RR
0225	101104	0	TDCT	B	CTD	33	87-33	49m	IOD	33-53.38N	118-29.39W	g	CSIO02RR
0245	101104	0	TDCT	E					IOD	33-53.41N	118-29.39W	g	CSIO02RR
0525	101104	0	TDCT	B	CTD	34	87-35		IOD	33-49.39N	118-37.68W	g	CSIO02RR
0626	101104	0	TDCT	E					IOD	33-49.39N	118-37.68W	g	CSIO02RR
1000	101104	0	TDCT	B	CTD	35	87-40	515m	IOD	33-39.40N	118-58.50W	g	CSIO02RR
1105	101104	0	TDCT	E					IOD	33-39.40N	118-58.50W	g	CSIO02RR
1347	101104	0	TDCT	B	CTD	36	87-45	515m	IOD	33-29.39N	119-19.11W	g	CSIO02RR

1440	101104	0	TDCT	E					IOD	33-29.40N	119-19.10W	g	CSIO02RR
2115	101104	0	TDCT	B	CTD	36	87-55	515m	IOD	33-09.45N	120-00.38W	g	CSIO02RR
2216	101104	0	TDCT	E					IOD	33-09.40N	120-00.40W	g	CSIO02RR
0142	111104	0	TDCT	B	CTD	37	87-60	515m	IOD	32-59.40N	120-21.00W	g	CSIO02RR
0244	111104	0	TDCT	E					IOD	32-59.40N	120-21.00W	g	CSIO02RR
0756	111104	0	TDCT	B	CTD	38	87-70	515m	IOD	32-39.41N	121-01.99W	g	CSIO02RR
0855	111104	0	TDCT	E					IOD	32-39.40N	121-01.99W	g	CSIO02RR
1022	111104	0	TDCT	B	CTD	38	87-70	1030m	IOD	32-39.37N	121-03.29W	g	CSIO02RR
1114	111104	0	TDCT	E					IOD	32-39.37N	121-03.27W	g	CSIO02RR
1703	111104	0	TDCT	B	CTD	39	87-80	515m	IOD	32-19.41N	121-42.89W	g	CSIO02RR
1759	111104	0	TDCT	E					IOD	32-19.41N	121-42.89W	g	CSIO02RR
2203	111104	0	TDCT	B	CTD	39	87-90	515m	IOD	31-59.37N	122-23.58W	g	CSIO02RR
2258	111104	0	TDCT	E					IOD	31-59.41N	122-23.59W	g	CSIO02RR
0343	121104	0	TDCT	B	CTD	40	87-100	515m	IOD	31-39.38N	123-04.16W	g	CSIO02RR
0448	121104	0	TDCT	E					IOD	31-39.40N	123-04.19W	g	CSIO02RR
0933	121104	0	TDCT	B	CTD	41	87-110	515m	IOD	31-19.45N	123-44.64W	g	CSIO02RR
1030	121104	0	TDCT	E					IOD	31-19.40N	123-44.60W	g	CSIO02RR
1730	121104	0	TDCT	B	CTD	42	83-110	515m	IOD	31-54.72N	124-10.19W	g	CSIO02RR
1827	121104	0	TDCT	E					IOD	31-54.72N	124-10.19W	g	CSIO02RR
2252	121104	0	TDCT	B	CTD	43	83-100	515m	IOD	32-14.70N	123-29.62W	g	CSIO02RR
2347	121104	0	TDCT	E					IOD	32-14.70N	123-29.49W	g	CSIO02RR
0506	131104	0	TDCT	B	CTD	44	83-90	515m	IOD	32-34.70N	122-48.67W	g	CSIO02RR
0606	131104	0	TDCT	E					IOD	32-34.70N	122-48.70W	g	CSIO02RR
1131	131104	0	TDCT	B	CTD	45	83-80	515m	IOD	32-54.69N	122-07.70W	g	CSIO02RR
1227	131104	0	TDCT	E					IOD	32-54.70N	122-07.70W	g	CSIO02RR
1742	131104	0	TDCT	B	CTD	46	83-70	515m	IOD	33-14.70N	121-26.59W	g	CSIO02RR
1838	131104	0	TDCT	E					IOD	33-14.70N	121-26.60W	g	CSIO02RR
0041	141104	0	TDCT	B	CTD	47	83-60	515m	IOD	33-34.70N	120-45.30W	g	CSIO02RR
0141	141104	0	TDCT	E					IOD	33-34.70N	120-45.29W	g	CSIO02RR
0550	141104	0	TDCT	B	CTD	48	83-55	515m	IOD	33-44.70N	120-24.55W	g	CSIO02RR
0700	141104	0	TDCT	E					IOD	33-44.69N	120-24.59W	g	CSIO02RR
1015	141104	0	TDCT	B	CTD	48	83-51	90m	IOD	33-52.73N	120-08.12W	g	CSIO02RR
1041	141104	0	TDCT	E					IOD	33-52.70N	120-08.00W	g	CSIO02RR
1531	141104	0	TDCT	B	CTD	49	83-42		IOD	34-10.70N	119-30.52W	g	CSIO02RR
1603	141104	0	TDCT	E					IOD	34-10.70N	119-30.51W	g	CSIO02RR
1825	141104	0	TDCT	B	CTD	50	83-40.6		IOD	34-13.50N	119-24.70W	g	CSIO02RR
1844	141104	0	TDCT	E					IOD	34-13.50N	119-24.70W	g	CSIO02RR
2050	141104	0	TDCT	B	CTD	51	83-39.4	15m	IOD	34-15.52N	119-19.46W	g	CSIO02RR
2102	141104	0	TDCT	E					IOD	34-15.54N	119-19.44W	g	CSIO02RR
0057	151104	0	TDCT	B	CTD	52	83-39.4	15m	IOD	34-24.18N	119-48.09W	g	CSIO02RR
0113	151104	0	TDCT	E					IOD	34-24.18N	119-48.09W	g	CSIO02RR
0303	151104	0	TDCT	B	CTD53	81.8-46.9	565m		IOD	34-16.52N	120-01.49W	g	CSIO02RR
0343	151104	0	TDCT	E	PCo2				IOD	34-16.51N	120-01.50W	g	CSIO02RR
0425	151104	0	TDCT	B	CTD54	81.8-46.9	515m		IOD	34-16.51N	120-01.50W	g	CSIO02RR
0540	151104	0	TDCT	E					IOD	34-16.51N	120-01.50W	g	CSIO02RR
0733	151104	0	TDCT	B	CTD55	81.8-46.9			IOD	34-18.16N	120-03.41W	g	CSIO02RR
0755	151104	0	TDCT	E	PCo2				IOD	34-18.16N	120-03.41W	g	CSIO02RR
1024	151104	0	TDCT	B	CTD	56	80-50.5		IOD	34-27.72N	120-29.09W	g	CSIO02RR
1038	151104	0	TDCT	E					IOD	34-27.72N	120-29.09W	g	CSIO02RR
1128	151104	0	TDCT	B	CTD	57	80-51		IOD	34-27.01N	120-31.38W	g	CSIO02RR
1153	151104	0	TDCT	E					IOD	34-27.01N	120-31.39W	g	CSIO02RR
1431	151104	0	TDCT	B	CTD	57	80-55	515m	IOD	34-19.01N	120-48.05W	g	CSIO02RR
1529	151104	0	TDCT	E					IOD	34-19.00N	120-48.10W	g	CSIO02RR
1845	151104	0	TDCT	B	CTD	58	80-60	515m	IOD	34-09.00N	121-08.99W	g	CSIO02RR
1936	151104	0	TDCT	E					IOD	34-09.00N	121-08.99W	g	CSIO02RR
0044	161104	0	TDCT	B	CTD	59	80-70	515m	IOD	33-49.01N	121-50.58W	g	CSIO02RR
0147	161104	0	TDCT	E					IOD	33-49.00N	121-50.59W	g	CSIO02RR
0638	161104	0	TDCT	B	CTD	60	80-80	515m	IOD	33-29.00N	122-32.00W	g	CSIO02RR
0740	161104	0	TDCT	E					IOD	33-29.00N	122-32.00W	g	CSIO02RR
0912	161104	0	TDCT	B	CTD	61	80-80	1030m	IOD	33-30.00N	122-33.28W	g	CSIO02RR
1003	161104	0	TDCT	E					IOD	33-30.00N	122-33.28W	g	CSIO02RR
1645	161104	0	TDCT	B	CTD	62	80-90	515m	IOD	33-09.00N	123-13.29W	g	CSIO02RR
1746	161104	0	TDCT	E					IOD	33-09.00N	123-13.30W	g	CSIO02RR
2140	161104	0	TDCT	B	CTD	63	80-100	515m	IOD	32-49.02N	123-54.48W	g	CSIO02RR
2233	161104	0	TDCT	E					IOD	32-49.02N	123-54.48W	g	CSIO02RR
0338	171104	0	TDCT	B	CTD	64	77-100	515m	IOD	33-23.28N	124-19.40W	g	CSIO02RR
0447	171104	0	TDCT	E					IOD	33-23.30N	124-19.40W	g	CSIO02RR
0946	171104	0	TDCT	B	CTD	65	77-90	515m	IOD	33-43.35N	123-37.99W	g	CSIO02RR
1045	171104	0	TDCT	E					IOD	33-43.30N	123-37.99W	g	CSIO02RR

1235	171104	0	TDCT	B	CTD	66	77-90	1000m	IOD	33-45.65N	123-38.09W	g	CSIO02RR
1325	171104	0	TDCT	E					IOD	33-45.65N	123-38.12W	g	CSIO02RR
1656	171104	0	TDCT	B	CTD	67	77-80	515m	IOD	34-03.30N	122-56.49W	g	CSIO02RR
1749	171104	0	TDCT	E					IOD	34-03.30N	122-56.50W	g	CSIO02RR
2320	171104	0	TDCT	B	CTD	68	77-70	515m	IOD	34-23.32N	122-14.81W	g	CSIO02RR
0019	181104	0	TDCT	E					IOD	34-23.32N	122-14.81W	g	CSIO02RR
0527	181104	0	TDCT	B	CTD	69	77-60	515m	IOD	34-43.30N	121-32.89W	g	CSIO02RR
0628	181104	0	TDCT	E					IOD	34-43.30N	121-32.89W	g	CSIO02RR
1033	181104	0	TDCT	B	CTD	70	77-55	60m	IOD	34-53.35N	121-11.97W	g	CSIO02RR
1136	181104	0	TDCT	E					IOD	34-53.31N	121-11.91W	g	CSIO02RR
1531	181104	0	TDCT	B	CTD	71	77-51	515m	IOD	35-01.30N	120-55.07W	g	CSIO02RR
1610	181104	0	TDCT	E					IOD	35-01.29N	120-55.09W	g	CSIO02RR
1903	181104	0	TDCT	B	CTD	72	77-49	60m	IOD	35-05.31N	120-46.60W	g	CSIO02RR
1926	181104	0	TDCT	E					IOD	35-05.30N	120-46.59W	g	CSIO02RR
0706	191104	0	TDCT	B	CTD	73	85.4-35.8	20m	IOD	34-00.38N	118-50.17W	g	CSIO02RR
0728	191104	0	TDCT	E					IOD	34-00.38N	118-50.17W	g	CSIO02RR
0949	191104	0	TDCT	B	CTD	74	86.8-32.5	16m	IOD	33-53.41N	118-26.50W	g	CSIO02RR
0958	191104	0	TDCT	E					IOD	33-53.41N	118-26.49W	g	CSIO02RR
1554	191104	0	TDCT	B	CTD	75	91.7-26.4		IOD	33-14.60N	117-27.90W	g	CSIO02RR
1608	191104	0	TDCT	E					IOD	33-14.60N	117-27.90W	g	CSIO02RR

#*** Temperature, Depth, Conductivity samples with Optical Instruments ***

1903	031104	0	TDCT	B	SCCOOBOP	01		100m	SIO	32-20.79N	118-33.29W	g	CSIO02RR
1920	031104	0	TDCT	E					SIO	32-20.79N	118-33.29W	g	CSIO02RR
1836	041104	0	TDCT	B	SCCOOBOP	02		100m	SIO	31-31.52N	120-15.61W	g	CSIO02RR
1853	041104	0	TDCT	E	93.3-70				SIO	31-31.52N	120-15.61W	g	CSIO02RR
1824	051104	0	TDCT	B	SCCOOBOP	03		100m	SIO	30-29.86N	122-16.09W	g	CSIO02RR
1842	051104	0	TDCT	E					SIO	30-29.86N	122-16.09W	g	CSIO02RR
1705	061104	0	TDCT	B	SCCOOBOP	04		150m	SIO	30-25.10N	123-59.92W	g	CSIO02RR
1728	061104	0	TDCT	E					SIO	30-25.10N	123-59.91W	g	CSIO02RR
1801	061104	0	TDCT	B	SCCOOBOP	05		150m	SIO	30-25.10N	123-59.91W	g	CSIO02RR
1813	061104	0	TDCT	E					SIO	30-25.10N	123-59.91W	g	CSIO02RR
0630	071104	0	TDCT	B	SCCOOBOP	06		150m	SIO	31-05.09N	122-39.66W	g	CSIO02RR
0652	071104	0	TDCT	E					SIO	31-05.09N	122-39.66W	g	CSIO02RR
1720	071104	0	TDCT	B	SCCOOBOP	07		150m	SIO	31-25.10N	121-59.38W	g	CSIO02RR
1742	071104	0	TDCT	E					SIO	31-25.10N	121-59.38W	g	CSIO02RR
1939	081104	0	TDCT	B	SCCOOBOP	08		150m	SIO	32-39.09N	119-28.84W	g	CSIO02RR
2007	081104	0	TDCT	E					SIO	32-39.09N	119-28.83W	g	CSIO02RR
1728	091104	0	TDCT	B	SCCOOBOP	09			SIO	33-29.09N	117-46.10W	g	CSIO02RR
1739	091104	0	TDCT	E					SIO	33-29.09N	117-46.10W	g	CSIO02RR
2040	091104	0	TDCT	B	SCCOOBOP	09			SIO	33-29.67N	117-44.90W	g	CSIO02RR
2049	091104	0	TDCT	E					SIO	33-29.67N	117-44.90W	g	CSIO02RR
0254	101104	0	TDCT	B	SCCOOBOP	10		50m	SIO	33-53.40N	118-29.40W	g	CSIO02RR
0308	101104	0	TDCT	E					SIO	33-53.40N	118-29.40W	g	CSIO02RR
0632	101104	0	TDCT	B	SCCOOBOP	11		100m	SIO	33-49.39N	118-37.68W	g	CSIO02RR
0646	101104	0	TDCT	E					SIO	33-49.39N	118-37.68W	g	CSIO02RR
0939	101104	0	TDCT	B	SCCOOBOP	12		100m	SIO	33-39.47N	118-58.53W	g	CSIO02RR
0955	101104	0	TDCT	E					SIO	33-39.41N	118-58.50W	g	CSIO02RR
1547	101104	0	TDCT	B	SCCOOBOP	13		150m	SIO	33-29.76N	119-20.53W	g	CSIO02RR
1602	101104	0	TDCT	E					SIO	33-29.76N	119-20.53W	g	CSIO02RR
2224	101104	0	TDCT	B	SCCOOBOP	14		150m	SIO	33-09.40N	120-00.40W	g	CSIO02RR
2241	101104	0	TDCT	E					SIO	33-09.40N	120-00.40W	g	CSIO02RR
0315	111104	0	TDCT	B	SCCOOBOP	15		100m	SIO	32-59.40N	120-21.00W	g	CSIO02RR
0331	111104	0	TDCT	E					SIO	32-59.40N	120-20.99W	g	CSIO02RR
0904	111104	0	TDCT	B	SCCOOBOP	16		100m	SIO	32-39.40N	121-02.00W	g	CSIO02RR
0919	111104	0	TDCT	E					SIO	32-39.40N	121-01.99W	g	CSIO02RR
1538	111104	0	TDCT	B	SCCOOBOP	17		100m	SIO	32-19.41N	121-42.87W	g	CSIO02RR
1553	111104	0	TDCT	E					SIO	32-19.41N	121-42.89W	g	CSIO02RR
2302	111104	0	TDCT	B	SCCOOBOP	18		100m	SIO	31-59.40N	122-23.59W	g	CSIO02RR
2320	111104	0	TDCT	E					SIO	31-59.40N	122-23.59W	g	CSIO02RR
0457	121104	0	TDCT	B	SCCOOBOP	19		100m	SIO	31-39.40N	123-04.20W	g	CSIO02RR
0516	121104	0	TDCT	E					SIO	31-39.40N	123-04.19W	g	CSIO02RR
1039	121104	0	TDCT	B	SCCOOBOP	20		150m	SIO	31-19.40N	123-44.60W	g	CSIO02RR
1055	121104	0	TDCT	E					SIO	31-19.40N	123-44.60W	g	CSIO02RR
1859	121104	0	TDCT	B	SCCOOBOP	21		150m	SIO	31-54.72N	124-10.19W	g	CSIO02RR
1921	121104	0	TDCT	E					SIO	31-54.72N	124-10.19W	g	CSIO02RR
0614	131104	0	TDCT	B	SCCOOBOP	22		150m	SIO	32-34.70N	122-48.70W	g	CSIO02RR

0629	131104	0	TDCT	E			SIO	32-34.70N	122-48.70W	g	CSIO02RR	
1911	131104	0	TDCT	B	SCCOOBOP	23	150m	SIO	33-14.70N	121-26.60W	g	CSIO02RR
1927	131104	0	TDCT	E				SIO	33-14.70N	121-26.60W	g	CSIO02RR
0220	141104	0	TDCT	B	SCCOOBOP	24	100m	SIO	33-34.97N	120-45.38W	g	CSIO02RR
0234	141104	0	TDCT	E				SIO	33-34.98N	120-45.39W	g	CSIO02RR
1851	141104	0	TDCT	B	SCCOOBOP	25		SIO	34-13.50N	119-24.70W	g	CSIO02RR
1858	141104	0	TDCT	E				SIO	34-13.50N	119-24.70W	g	CSIO02RR
2106	141104	0	TDCT	B	SCCOOBOP	26		SIO	34-15.54N	119-19.44W	g	CSIO02RR
2115	141104	0	TDCT	E				SIO	34-15.53N	119-19.44W	g	CSIO02RR
0119	151104	0	TDCT	B	SCCOOBOP	27		SIO	34-24.18N	119-48.09W	g	CSIO02RR
0129	151104	0	TDCT	E				SIO	34-24.18N	119-48.09W	g	CSIO02RR
0347	151104	0	TDCT	B	SCCOOBOP	28		SIO	34-16.51N	120-01.50W	g	CSIO02RR
0414	151104	0	TDCT	E				SIO	34-16.51N	120-01.50W	g	CSIO02RR
1043	151104	0	TDCT	B	SCCOOBOP	28		SIO	34-27.72N	120-29.09W	g	CSIO02RR
1050	151104	0	TDCT	E				SIO	34-27.72N	120-29.09W	g	CSIO02RR
1158	151104	0	TDCT	B	SCCOOBOP	29	70m	SIO	34-27.01N	120-31.39W	g	CSIO02RR
1209	151104	0	TDCT	E				SIO	34-27.01N	120-31.39W	g	CSIO02RR
1533	151104	0	TDCT	B	SCCOOBOP	30	100m	SIO	34-19.00N	120-48.09W	g	CSIO02RR
1548	151104	0	TDCT	E				SIO	34-19.00N	120-48.10W	g	CSIO02RR
2003	151104	0	TDCT	B	SCCOOBOP	31	100m	SIO	34-08.99N	121-08.99W	g	CSIO02RR
2019	151104	0	TDCT	E				SIO	34-09.00N	121-08.99W	g	CSIO02RR
0153	161104	0	TDCT	B	SCCOOBOP	32	100m	SIO	33-49.00N	121-50.59W	g	CSIO02RR
0206	161104	0	TDCT	E				SIO	33-49.00N	121-50.59W	g	CSIO02RR
0746	161104	0	TDCT	B	SCCOOBOP	33	500m	SIO	33-29.00N	122-32.00W	g	CSIO02RR
0813	161104	0	TDCT	E				SIO	33-29.00N	122-32.00W	g	CSIO02RR
1331	161104	0	TDCT	B	SCCOOBOP	34	100m	SIO	33-08.99N	123-13.29W	g	CSIO02RR
1348	161104	0	TDCT	E				SIO	33-08.99N	123-13.29W	g	CSIO02RR
2240	161104	0	TDCT	B	SCCOOBOP	35	500m	SIO	32-49.02N	123-54.48W	g	CSIO02RR
2307	161104	0	TDCT	E				SIO	32-49.02N	123-54.48W	g	CSIO02RR
1816	171104	0	TDCT	B	SCCOOBOP	36	100m	SIO	34-03.30N	122-56.50W	g	CSIO02RR
1830	171104	0	TDCT	E				SIO	34-03.30N	122-56.50W	g	CSIO02RR
0635	181104	0	TDCT	B	SCCOOBOP	37	100m	SIO	34-43.30N	121-32.89W	g	CSIO02RR
0700	181104	0	TDCT	E				SIO	34-43.30N	121-32.90W	g	CSIO02RR
1141	181104	0	TDCT	B	SCCOOBOP	38	50m	SIO	34-53.30N	121-11.90W	g	CSIO02RR
1235	181104	0	TDCT	E				SIO	34-53.30N	121-11.90W	g	CSIO02RR
1840	181104	0	TDCT	B	SCCOOBOP	39	100m	SIO	35-05.30N	120-46.60W	g	CSIO02RR
1902	181104	0	TDCT	E				SIO	35-05.30N	120-46.60W	g	CSIO02RR
0734	191104	0	TDCT	B	SCCOOBOP	40	20m	SIO	34-00.38N	118-50.17W	g	CSIO02RR
0741	191104	0	TDCT	E				SIO	34-00.38N	118-50.17W	g	CSIO02RR
1009	191104	0	TDCT	B	SCCOOBOP	41	15m	SIO	33-53.41N	118-26.49W	g	CSIO02RR
1018	191104	0	TDCT	E				SIO	33-53.41N	118-26.49W	g	CSIO02RR
1611	191104	0	TDCT	B	SCCOOBOP	42	15m	SIO	33-14.60N	117-27.90W	g	CSIO02RR
1628	191104	0	TDCT	E				SIO	33-14.60N	117-27.90W	g	CSIO02RR

End Sample Index

CSIO02RR