

All that parcel let "S" of the Subdiv of a part of the
... Course at a point on the N. by line
... the N. S. corner of the
... along sd. line of the E 1/4 of Sec 27
... the N. S. corner of the E 1/4 of Sec 34-11-4th. 29.16 ch.
... the N. S. corner of the E 1/4 of Sec 34-11-4th. 29.16 ch.
... cont. 305 ac or less.

D.F.M.
D. J. M.
C. J. M.
6/10/13

Book 599 - 17 175 - 2-14-13

Compiled from
Distances taken from
Partition Map of Agua Hedionda
Rancho and from Deeds.

~~Pt. J. W. & B. in Sec. 4 12-47th
Marshall & Linn B. Co.
C. J. M.
Chap. Garfield & Bowen
35-1000 measured lot north of lot 1 of lot 5
David J. M.~~

6.90
19.4
29
17
17
17

Begin at N.W. cor. of sd. Rancho running th in the direction
of 97° E. cor. and along N. line of sd. Rancho. 57° 40' @ 96.52 ch.
to an oblong stone on the edge of the road. th. at a
Sa. 2° 20' E. 29.49 ch. to a mound of stones, th. S. 67° 20' @ 58.50
to a large stone and mound of earth. th. N. 59° 00' @ 57.20 ch.
to 2 sand stones. th. N. 35° 30' E @ 21.65 ch to pt of beg
cont. 36.21 acres of land (more or less)

Juan M. M.
D/V

Part dimensions & courses on tracing & Plans

21.68
130000
1430.5
143!

11

29

28

27

26

25

Chas B Gould
316 A

30
LOT D

32
LOT J

31
LOT L
500

35
LOT E

232 A

286 A

211 A

320 A

240 A

275 A

255 A

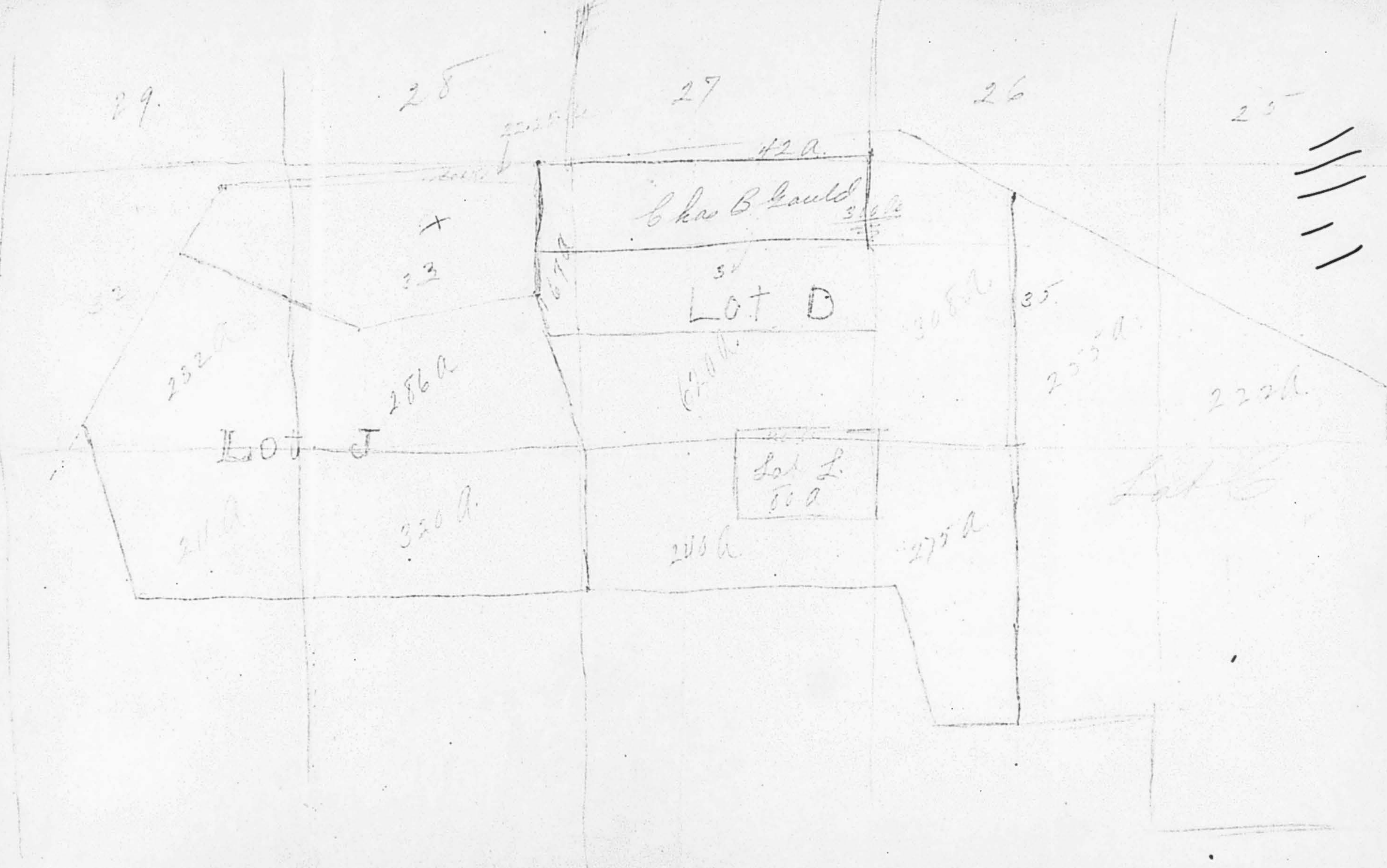
222 A

42 A

67 A

308 A

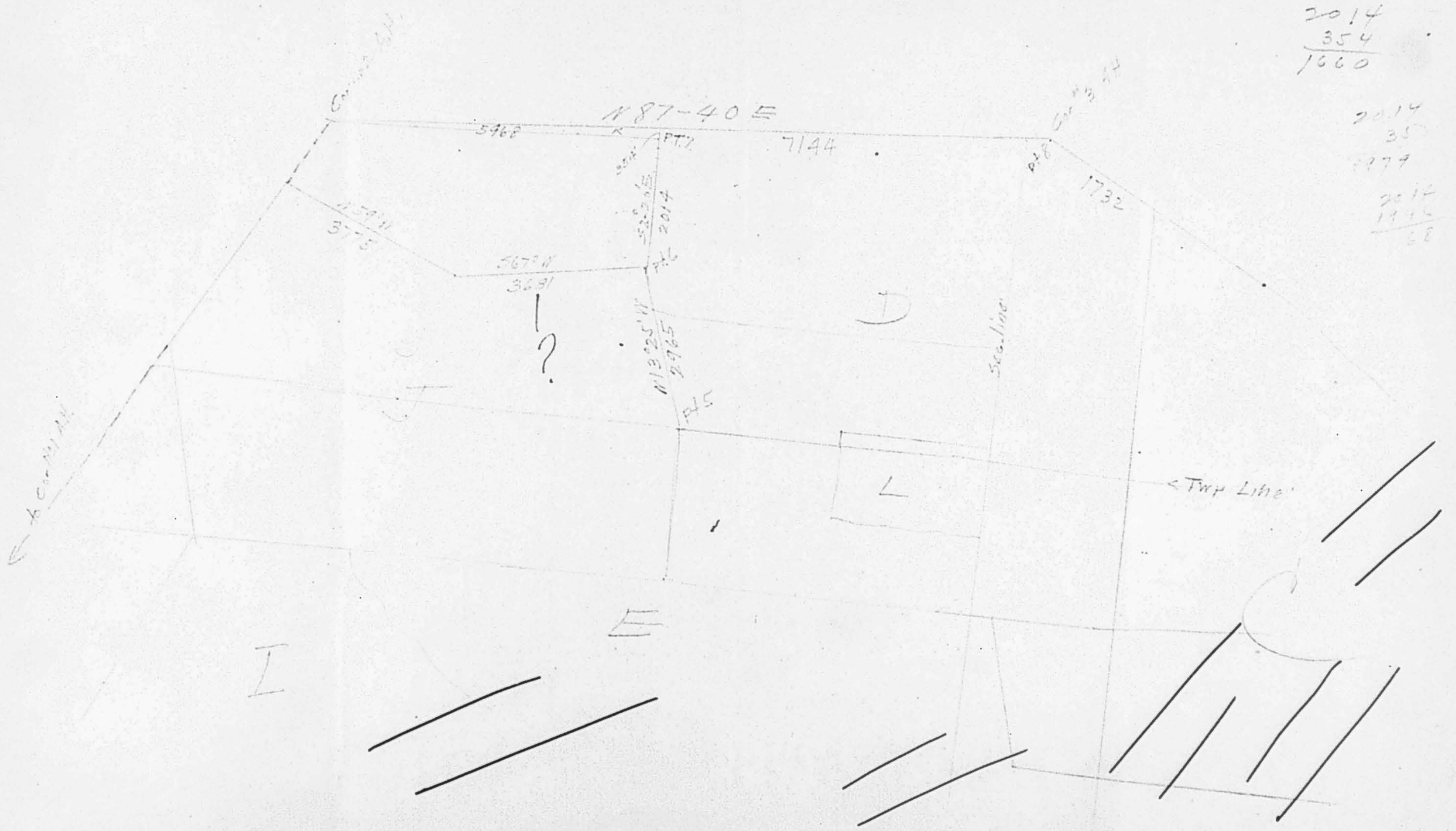
35



2014
354
1660

2014
35
1979

2014
1945
58



El Salto Rest
Property

Ed Fletcher Papers

1870-1955

MSS.81

Box: 46 Folder: 4

**Business Records - Water Companies - Volcan Land
and Water Company - El Salto Reservoir notes**



Copyright: UC Regents

Use: This work is available from the UC San Diego Libraries. This digital copy of the work is intended to support research, teaching, and private study.

Constraints: This work is protected by the U.S. Copyright Law (Title 17, U.S.C.). Use of this work beyond that allowed by "fair use" requires written permission of the UC Regents. Permission may be obtained from the UC San Diego Libraries department having custody of the work (<http://libraries.ucsd.edu/collections/mscl/>). Responsibility for obtaining permissions and any use and distribution of this work rests exclusively with the user and not the UC San Diego Libraries.