

INFORMAL REPORT AND INDEX OF  
NAVIGATION, DEPTH, MAGNETIC AND SUBBOTTOM PROFILER DATA

(Issued February 1986)

PAPATUA EXPEDITION

LEG 1

San Diego, Calif. (17 September 1985)  
to  
Manzanillo, Mexico (16 October 1985)

R/V T. Washington

Chief Scientist - J. McClain (U. of Cal. Davis)

Resident Marine Tech - J. Boaz

Post-Cruise Processing and Report Preparation  
by S.I.O. Geological Data Center

Data Collection and Processing funded by  
NSF Grant Number OCE83-17741  
UC General Funds

NOTE: This is an index of underway geophysical data edited and processed after the completion of the cruise leg and is intended primarily for informal use within the institution. This document is not to be reproduced or distributed outside Scripps without prior approval of the chief scientist or the Geological Data Center, Scripps Institution of Oceanography, La Jolla, California 92093.

GDC Cruise I.D.# 220

INFORMAL REPORT AND INDEX OF NAVIGATION, DEPTH,  
MAGNETIC AND SUBBOTTOM PROFILER DATA

Contents:

- Index Chart - gives track of cruise leg, dates, ports, and mileage of each type of data collected.
- Track Charts - annotated with dates (day/month) and hour ticks. The scale is .312 in/degree longitude.
- Profiles - depth and magnetic anomaly vs. distance. Dates (day/month) and positions of major course changes (greater than 30 degrees) are annotated. Sections of track having subbottom profiles (airgun or watergun) records have a wide black line along the bottom of the profile. Sections having Sea Beam are indicated by a narrow black line.
- Sample Index - list of beginning and end times and positions of all underway records as well as all other samples (geology, biology, physical oceanography, etc.) collected on the cruise leg.

For information on the availability and reproduction costs of data in the following forms, contact S. M. Smith, Curator, Geological Data Center, Scripps Institution of Oceanography, La Jolla, California 92093. Phone (619)452-2752.

1. Navigation listing of times and positions of course and speed changes, fixes and drift velocity.
2. Depth compilation plots - compilation plots at the traditional scale of 4in/degree longitude (1:1,000,000) are no longer produced for Sea Beam cruises. Custom plots may be requested of vertical beam (2 $\frac{2}{3}$  degree beam width) depths retrieved at one minute intervals of ship time.
3. Plots of magnetic anomaly profiles along track - map scale = 1.2in/degree, anomaly scale between 15N and 15S latitude = 500 gamma/inch, anomaly scale north of 15N and south of 15S = 1000 gamma/inch, from values retrieved at approximately 1 mile spacing and regional field removed using the 1980 IGRF.
4. Separate time series files of navigation, depth and magnetics of data merged in the MGD77 Exchange format on magnetic tape.
5. Microfilm or Xerox copies of:
  - a. Echosounder records - 12 and 3.5 kHz frequency
  - b. Subbottom profiler records (air or water guns)
  - c. Magnetometer records
  - d. Underway data log

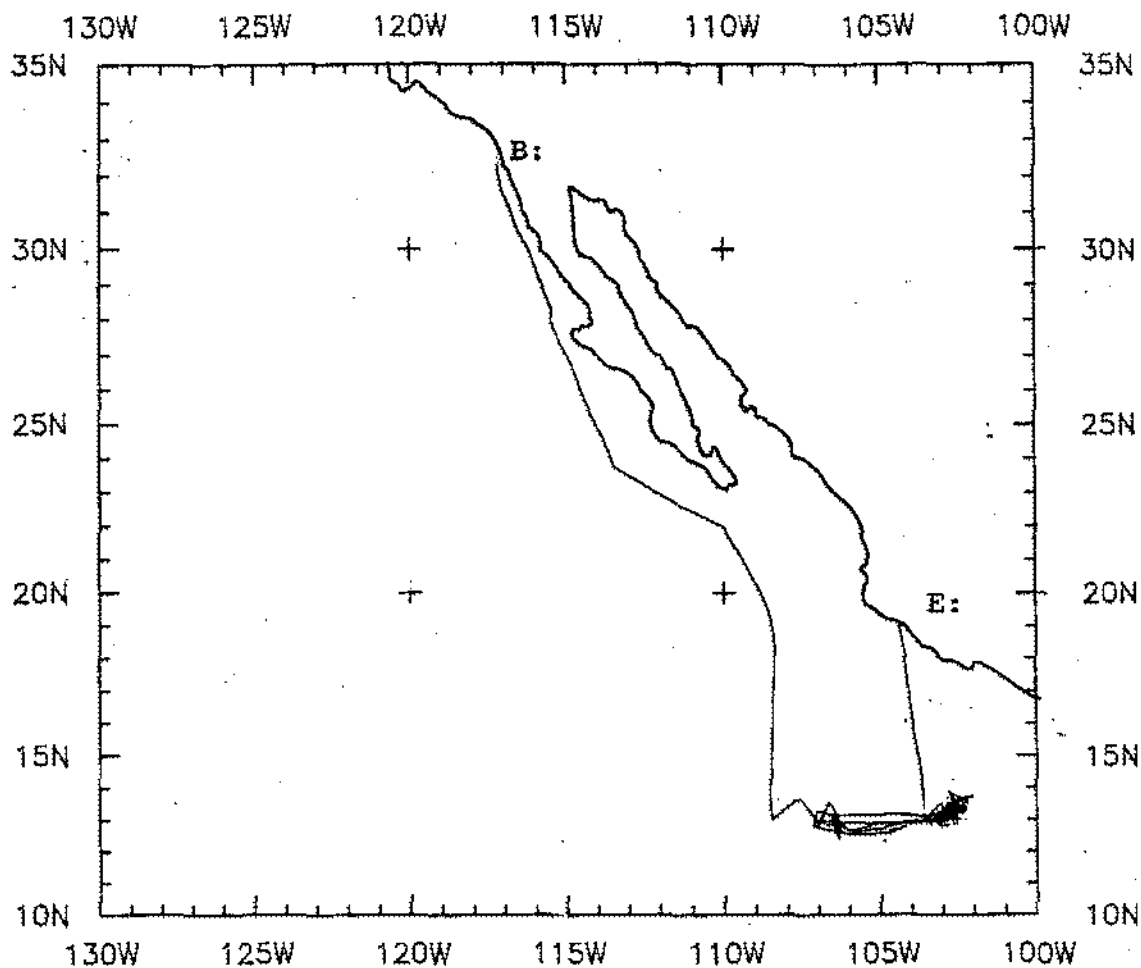
Revised June 1985 (Sea Beam)

## SIO Sea Beam Data

The following forms are available, subject to approval of the cruise leg chief scientist.

- 1) Archive contour copy of contour swath books generated in real time on board ship available for inspection at the Data Center.
- 2) Microfilm (35mm flowfilm) containing swath books plus, for some cruises, the UGR monitor record and navigation listings.
- 3) Sea Beam merged tapes - Sea Beam data merged with navigation. (Navigation is edited to the extent that poor fixes are removed after inspection of drift vectors between fix pairs. No editing is done on the basis of adjusting to overlapping Sea Beam swaths.)
- 4) Custom generated plots of Sea Beam swaths on Mercator projection in four colors at variable plot scales and contour intervals. There are provisions to adjust positions of individual track lines and to edit out beams (bad data or overlapping data on inside of turns).

S. M. Smith - June 1985



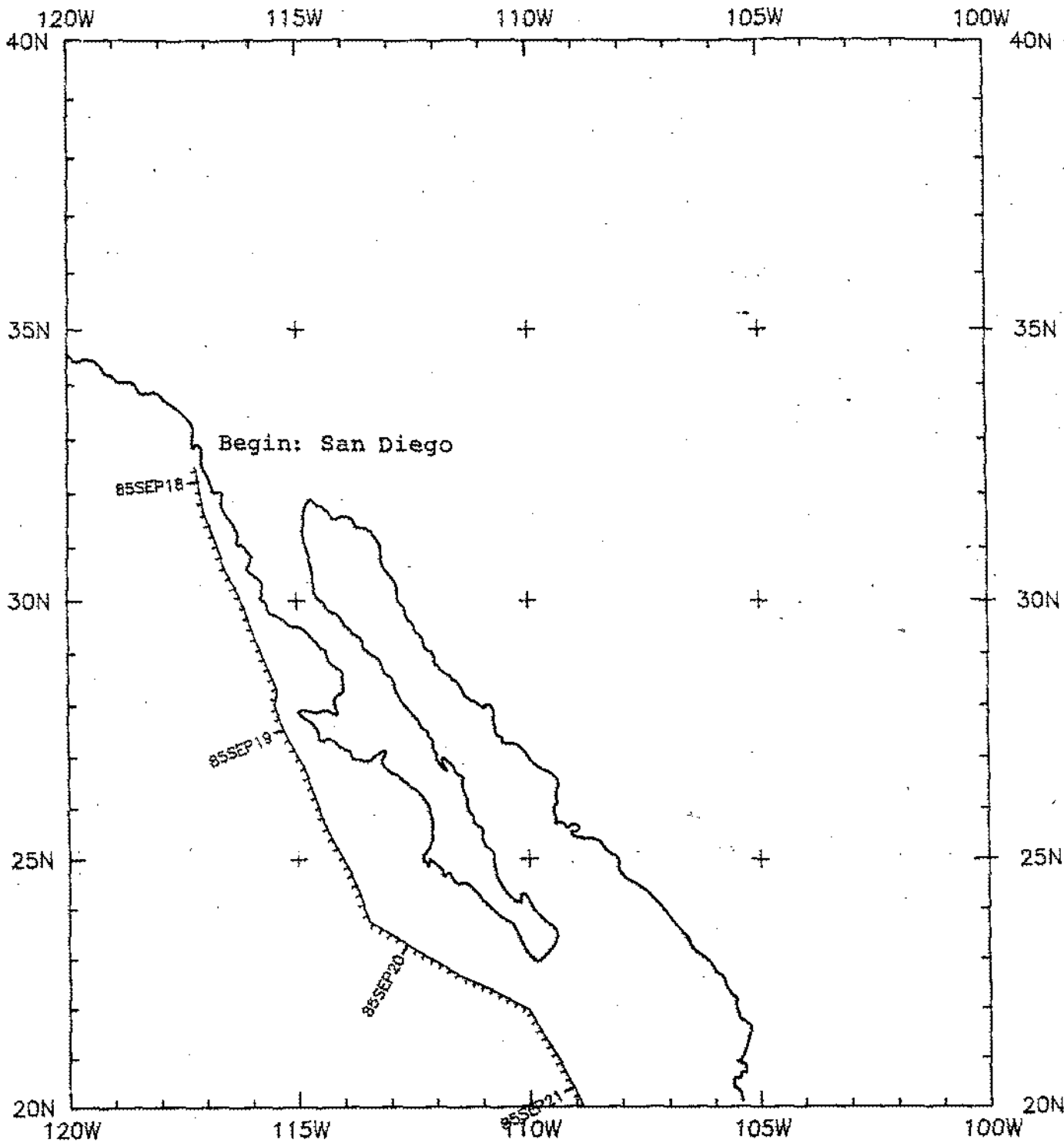
PAPATUA LEG 1 Track at .1632in/deg

PAPATUA EXPEDITION  
LEG 1

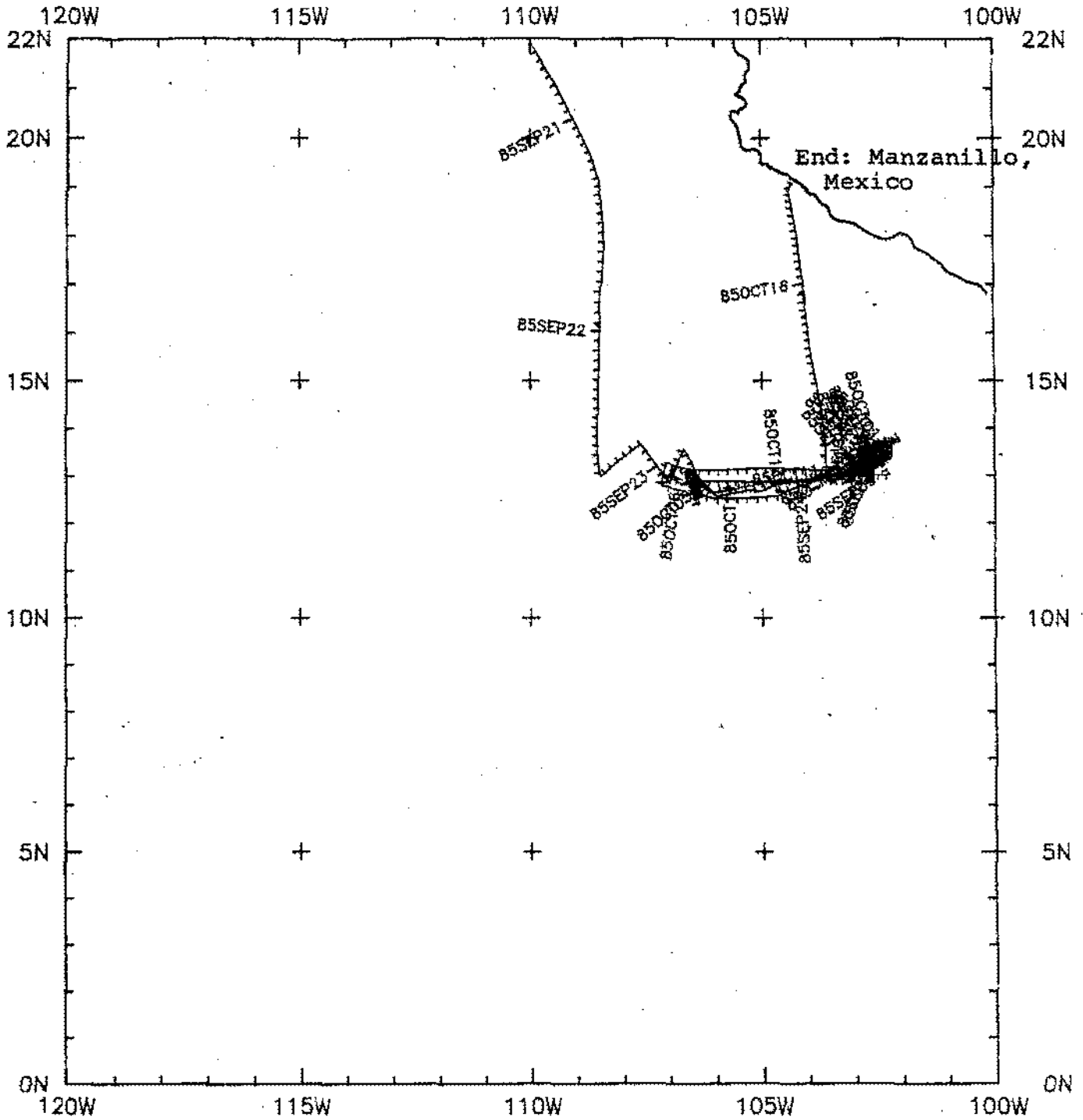
CHIEF SCIENTIST: J. McClain (UCD)  
 PORTS: San Diego, Calif - Manzanillo, Mexico  
 DATES: 17 September - 16 October 1985  
 SHIP: R/V T. Washington

TOTAL MILEAGE OF UNDERWAY DATA COLLECTED

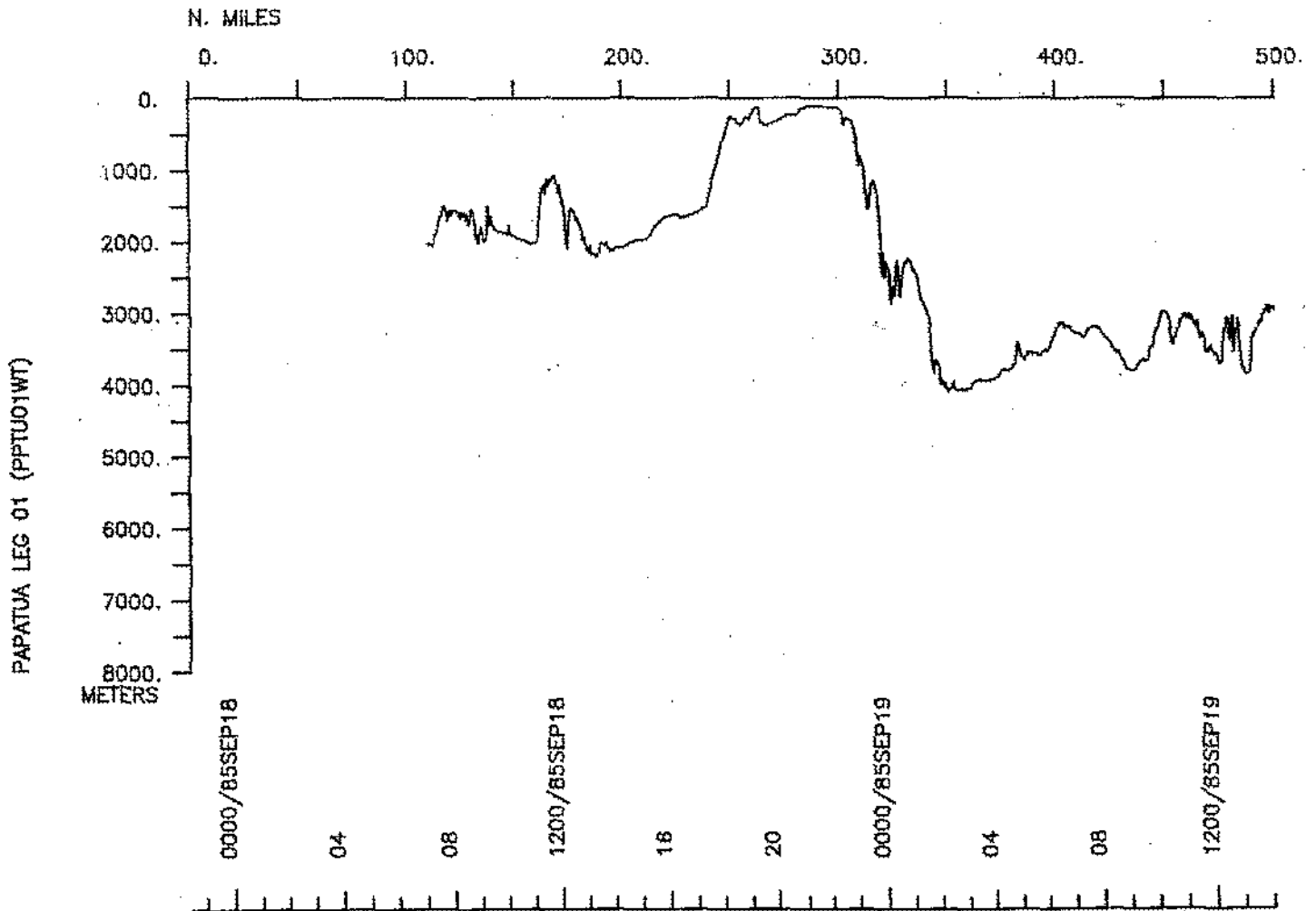
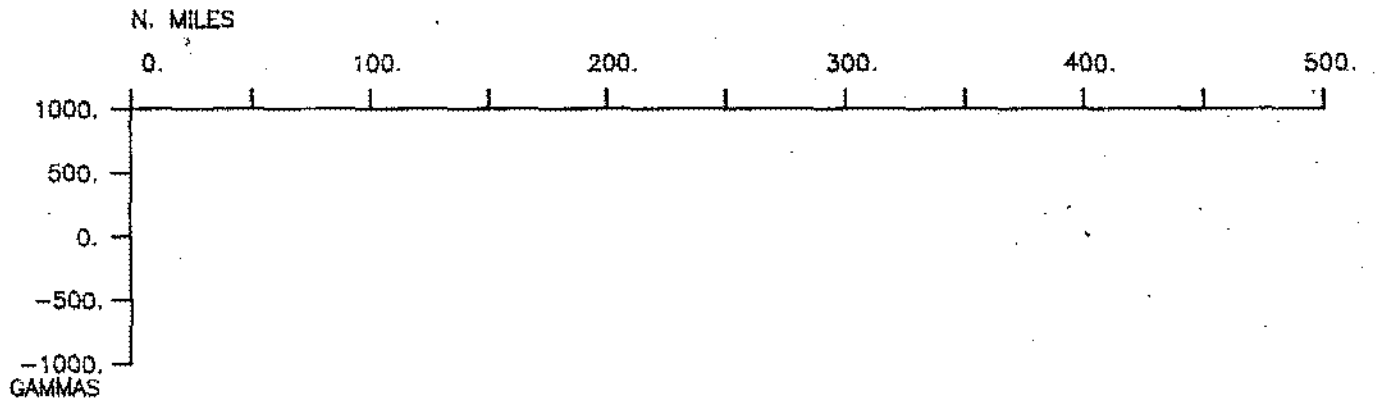
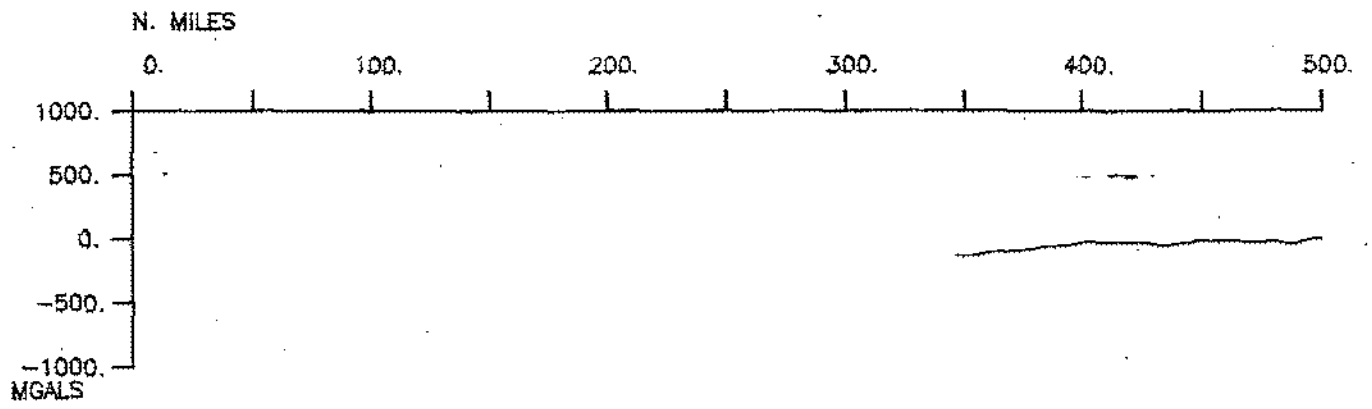
- 1) Cruise - 6352 miles
- 2) Bathymetry - 6187 miles
- 3) Magnetics - 2400 miles
- 4) Seismic Reflection - none collected
- 5) Gravity - 2665 miles (6352 miles collected)



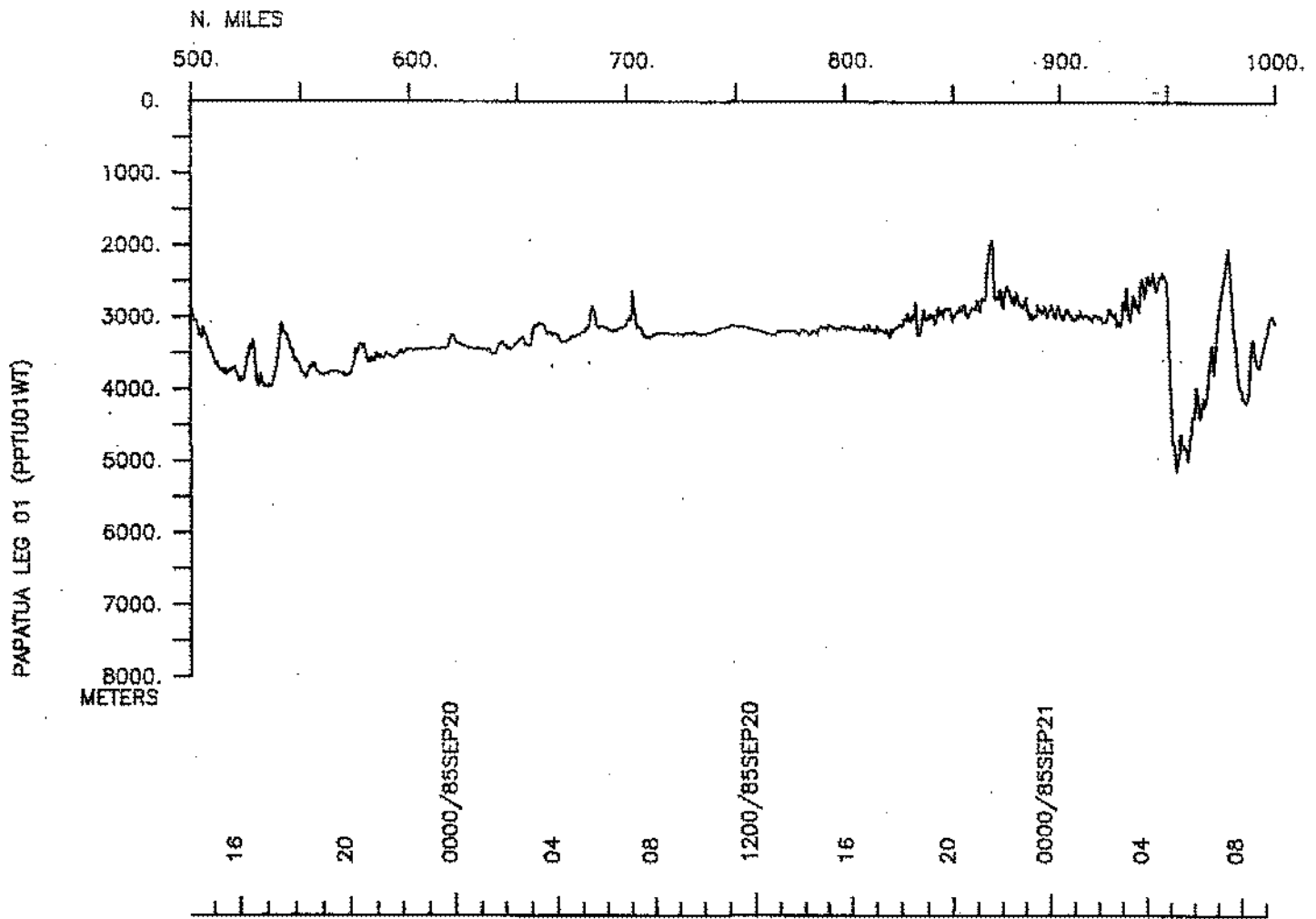
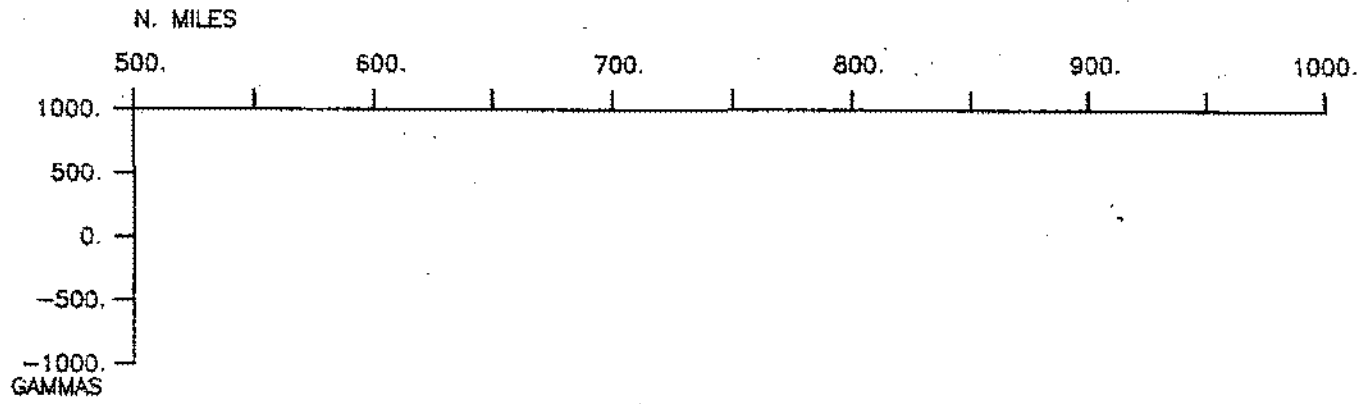
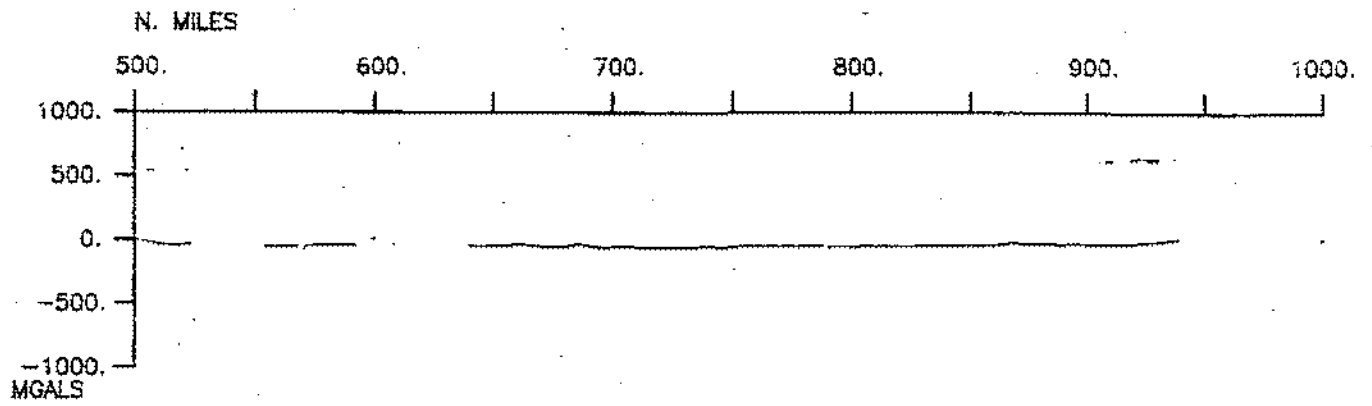
PAPATUA LEG 1 Mercator at 0.312 in/deg long. (plot 1 of 2)



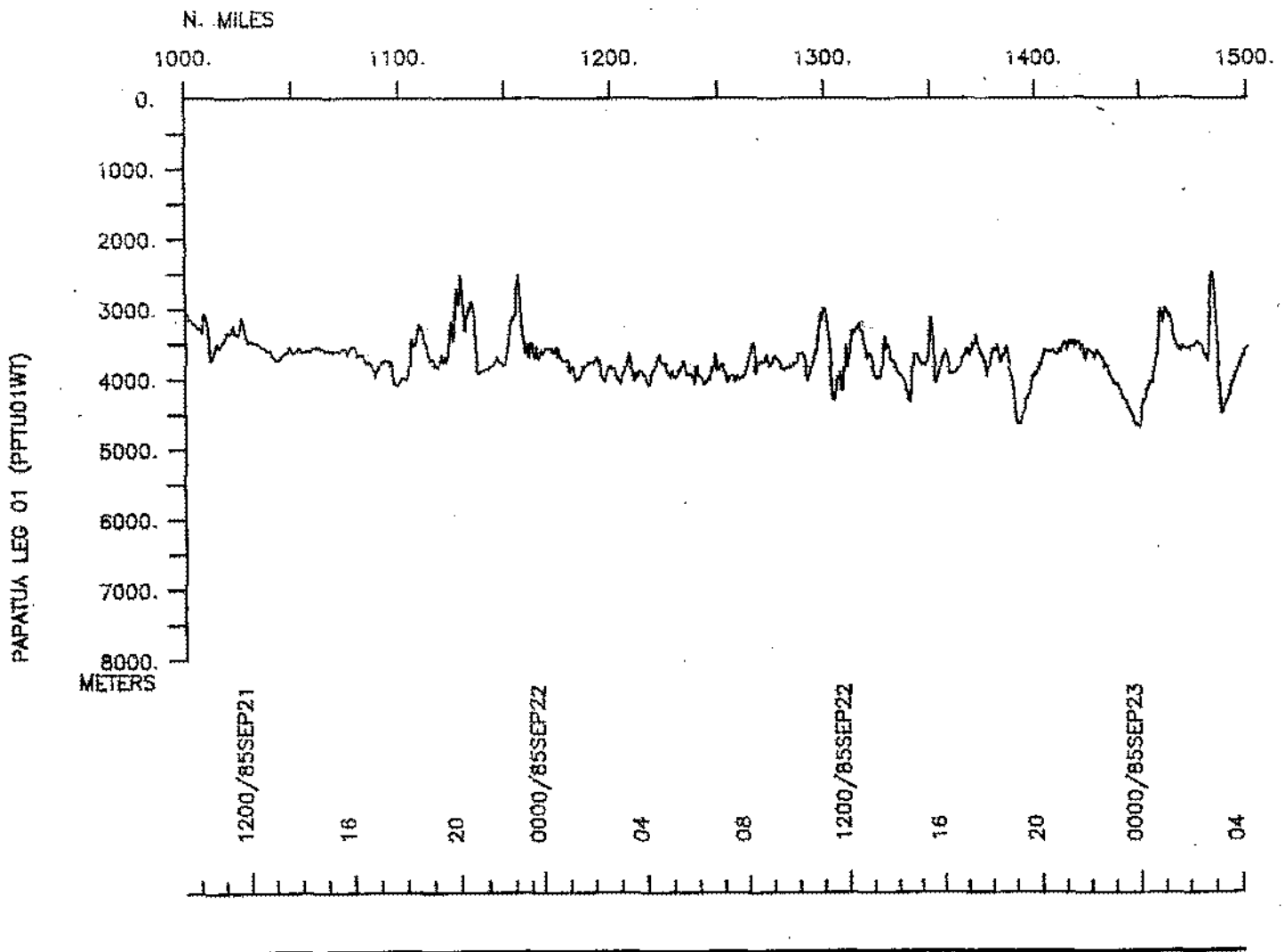
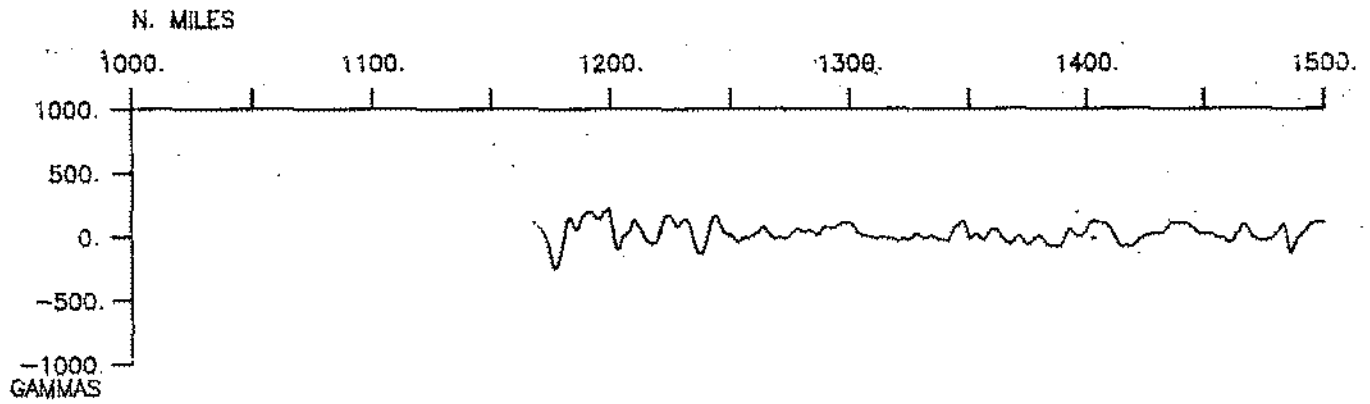
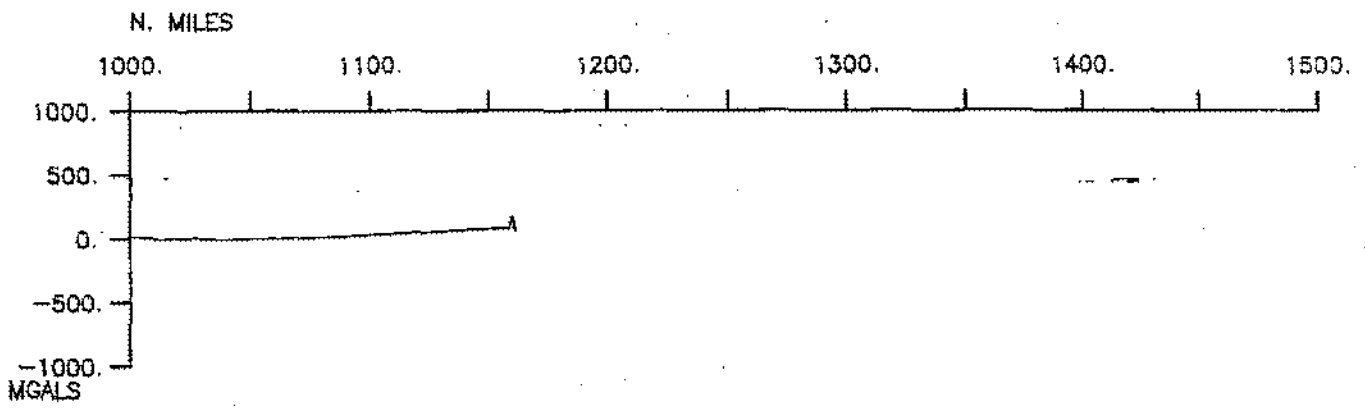
PAPATUA LEG 1 Mercator at 0.312 in/deg long. (plot 2 of 2)

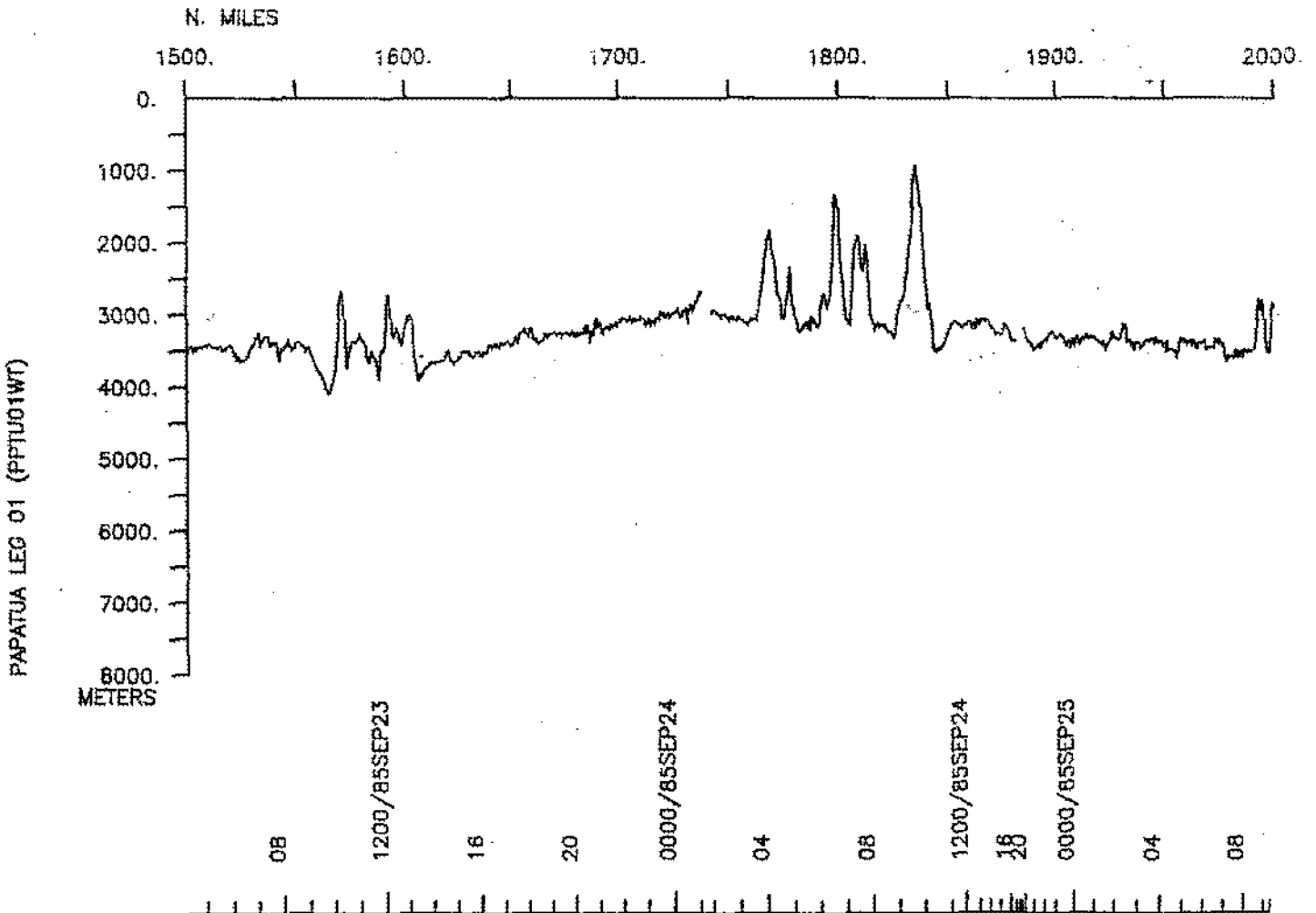
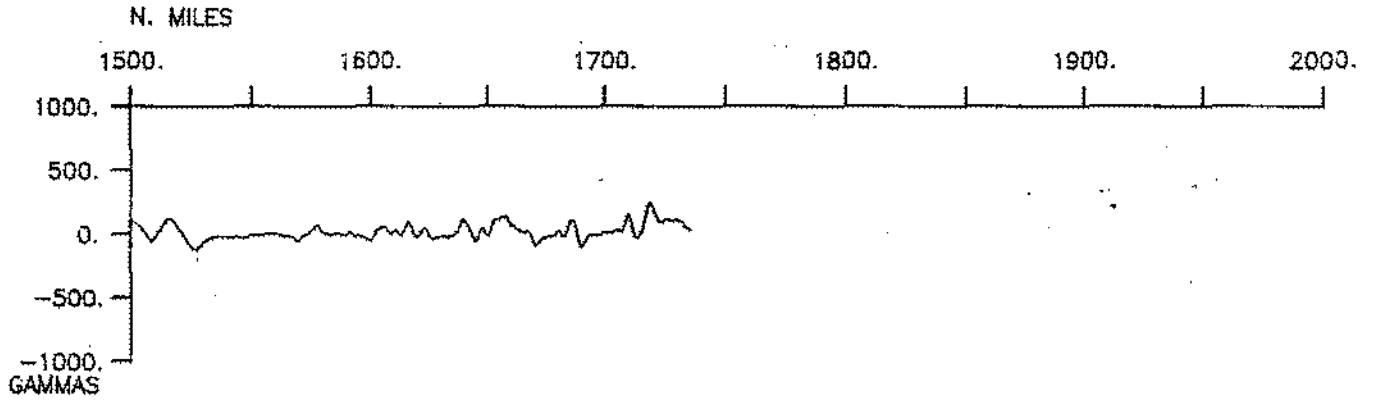
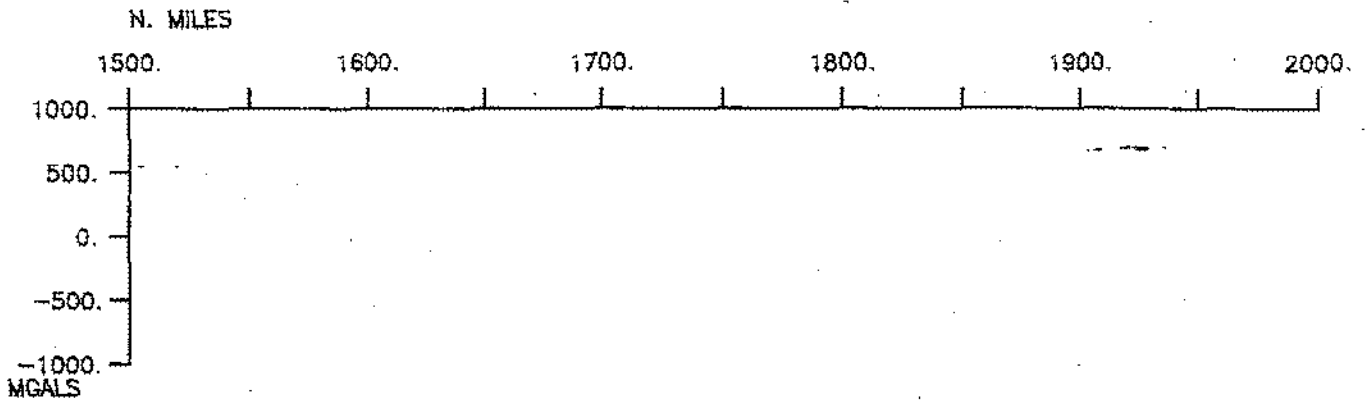


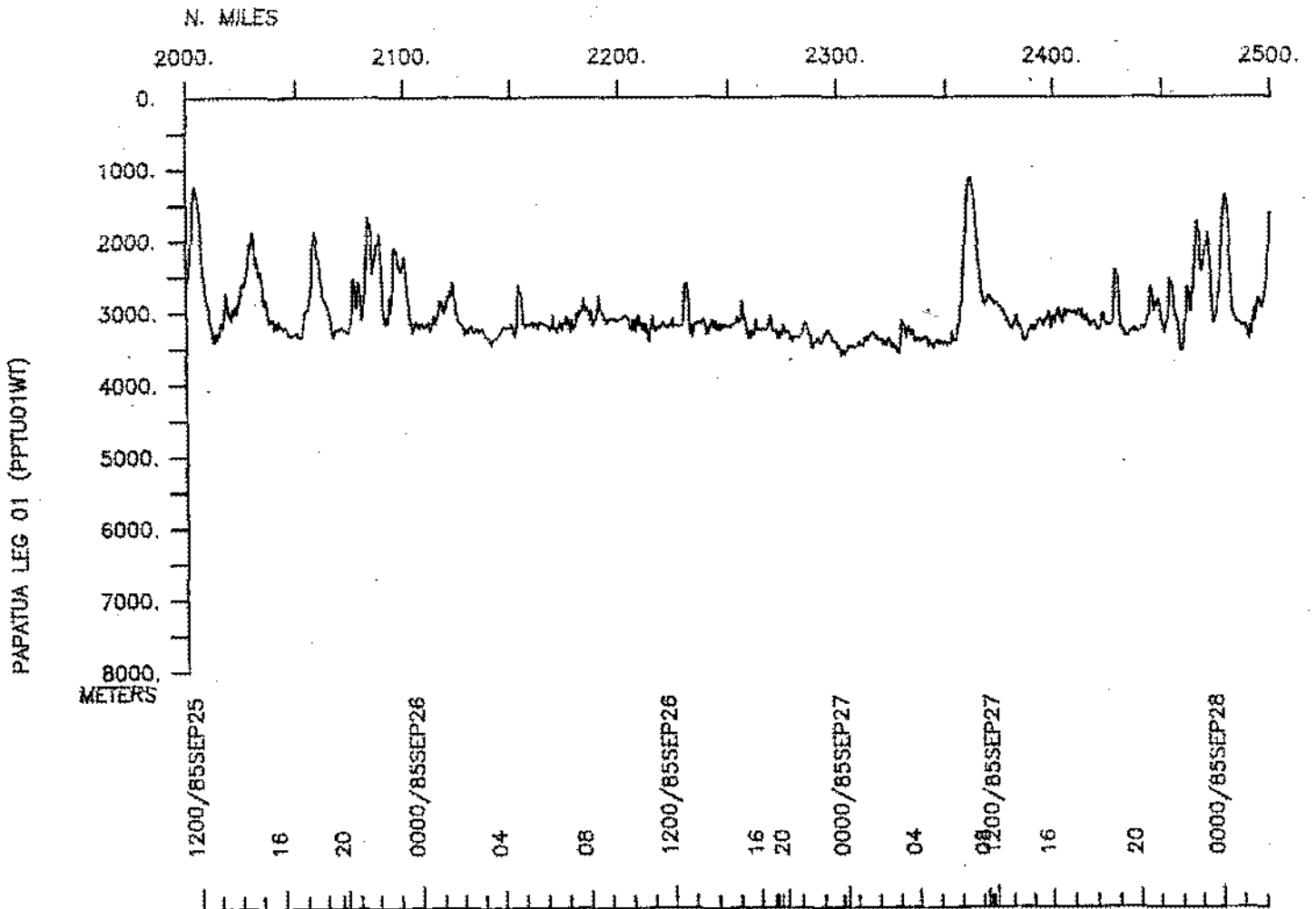
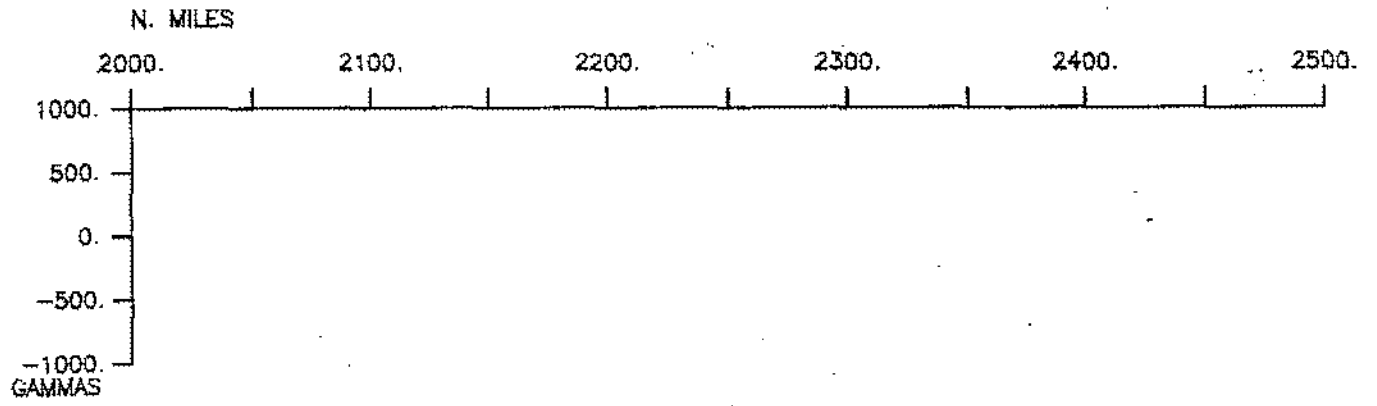
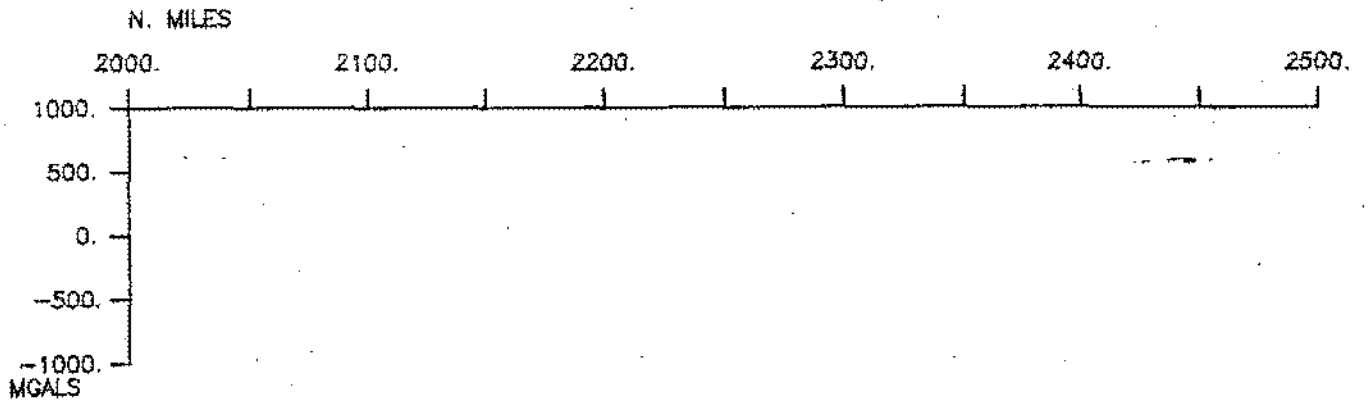
SEABEAM

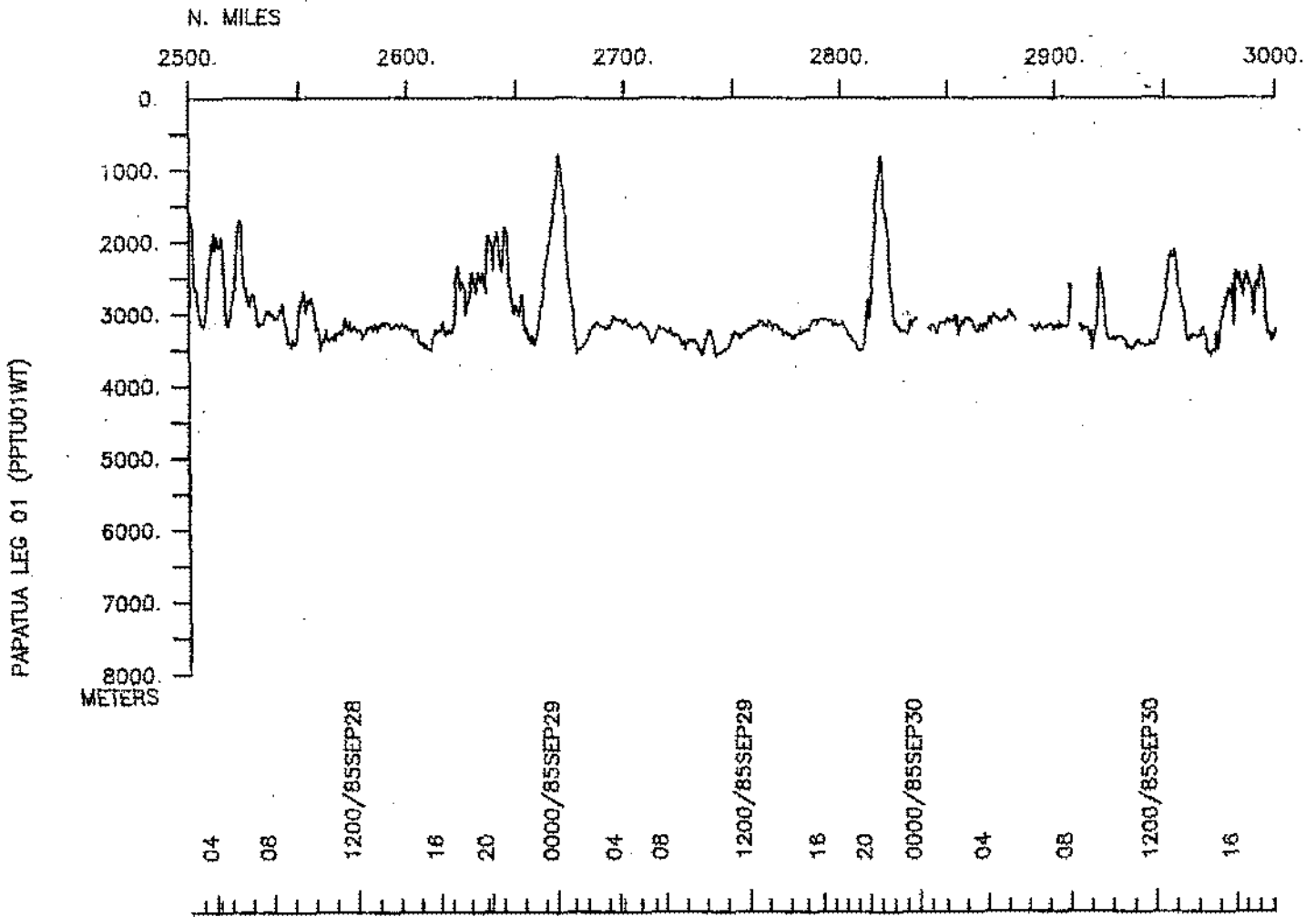
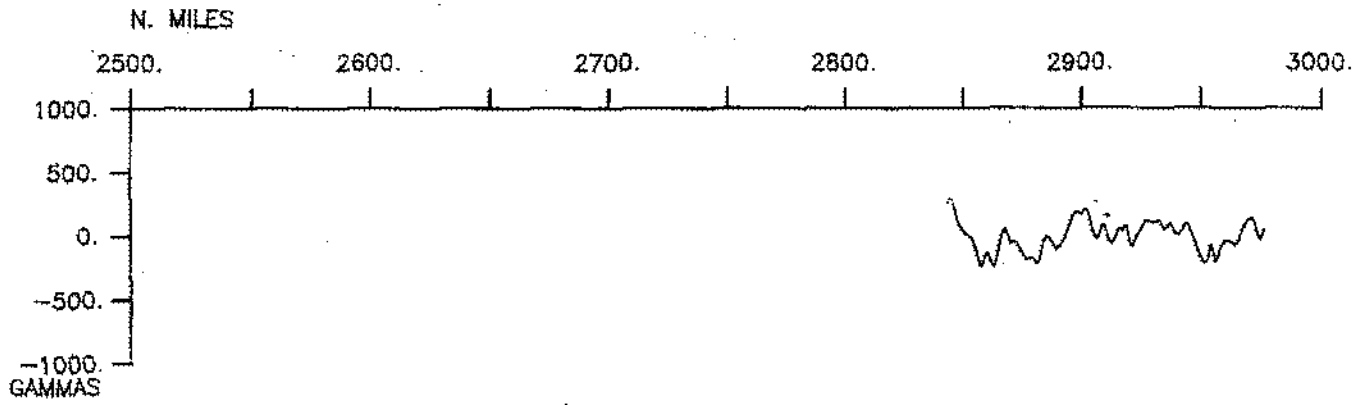
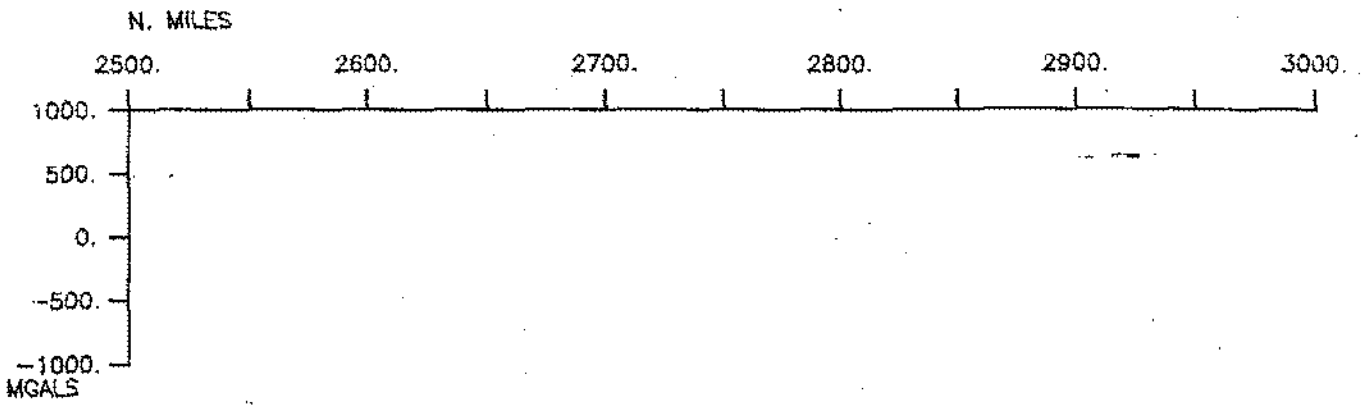


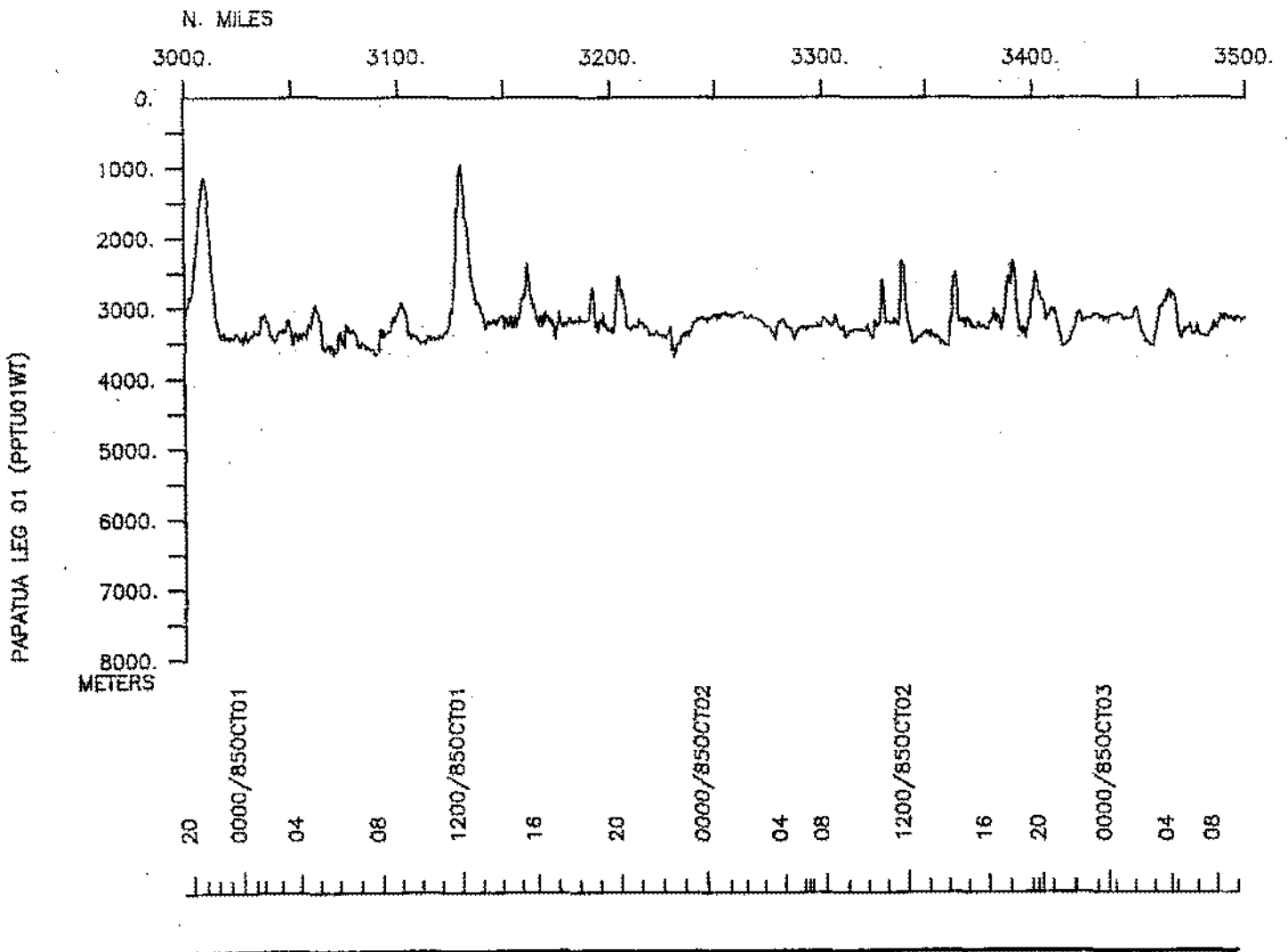
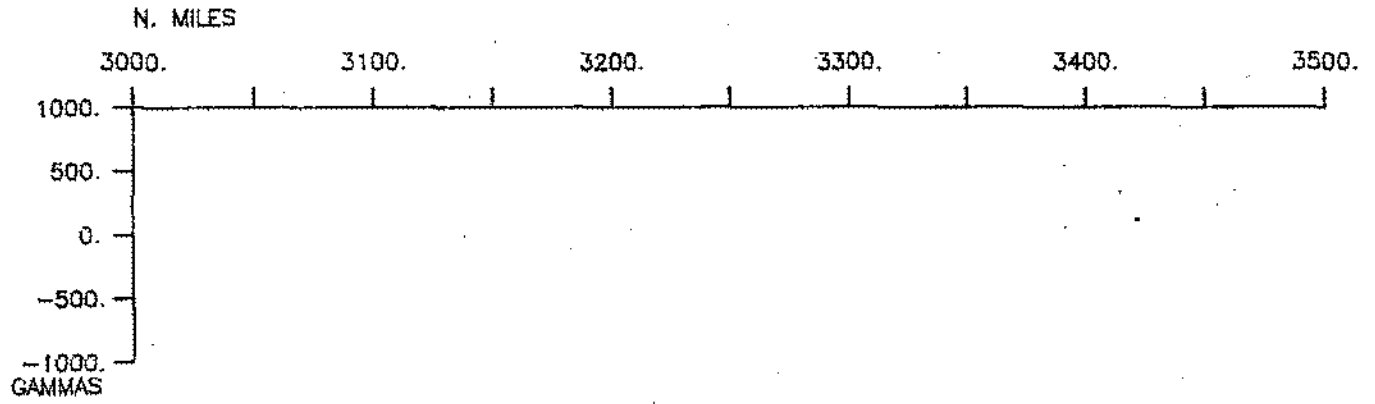
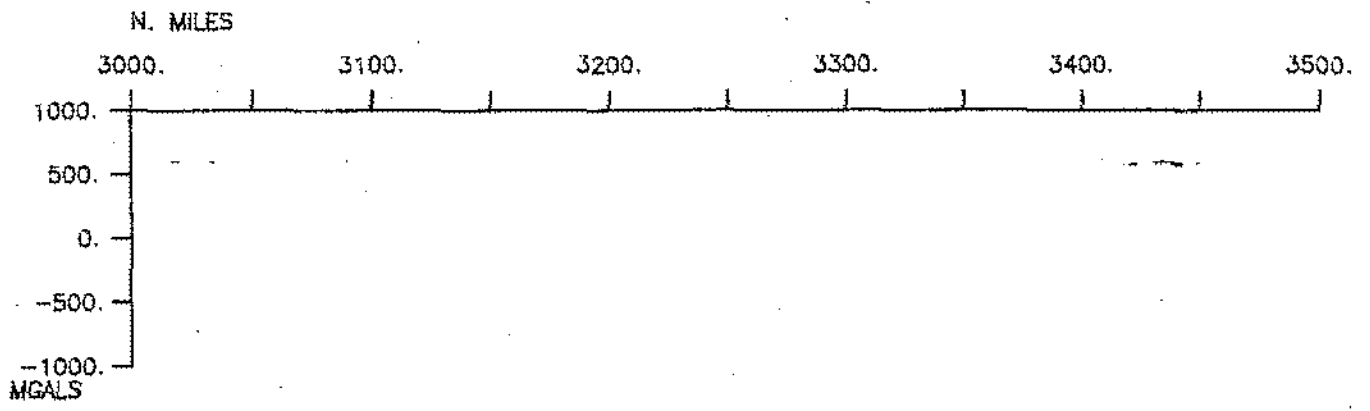


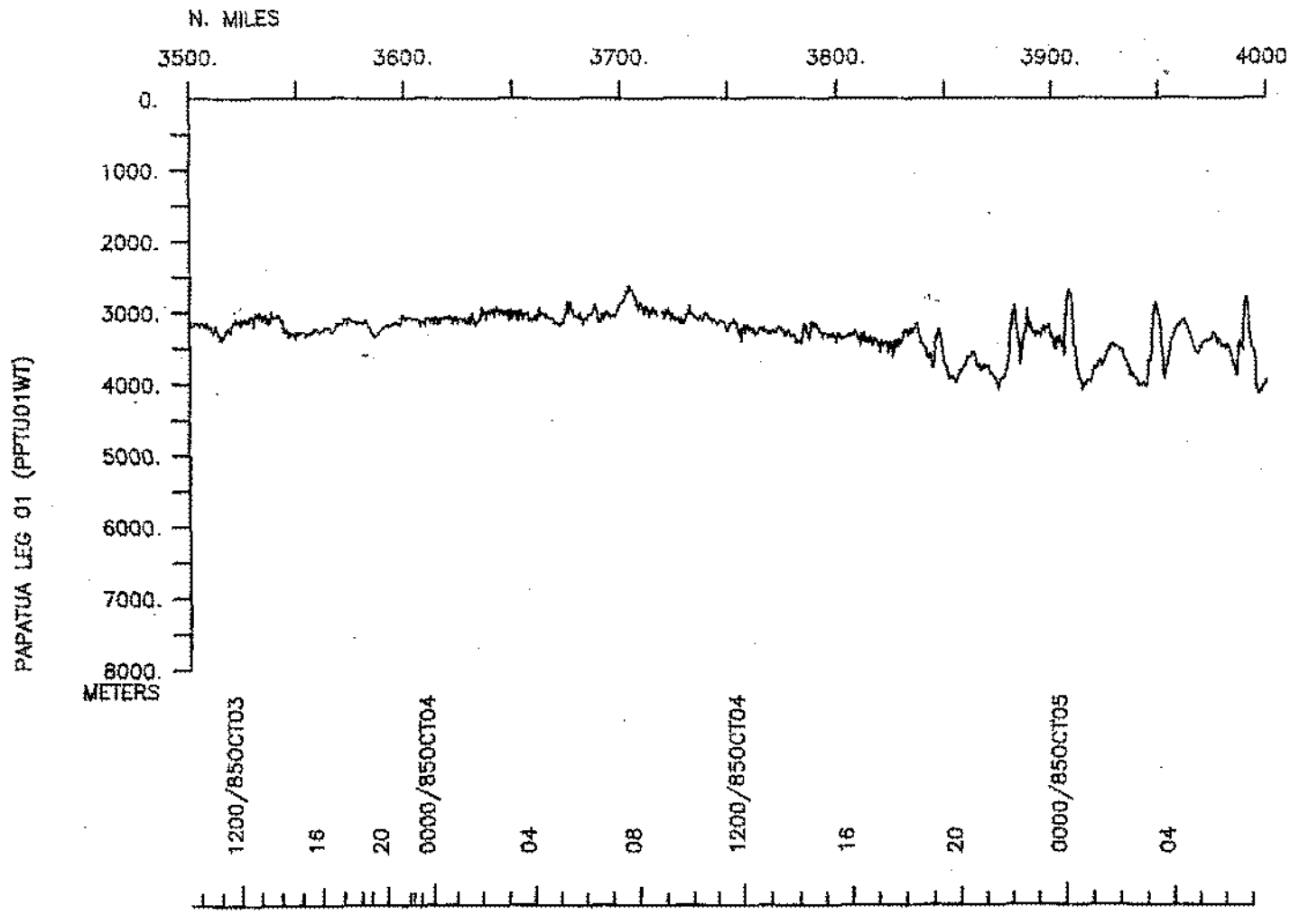
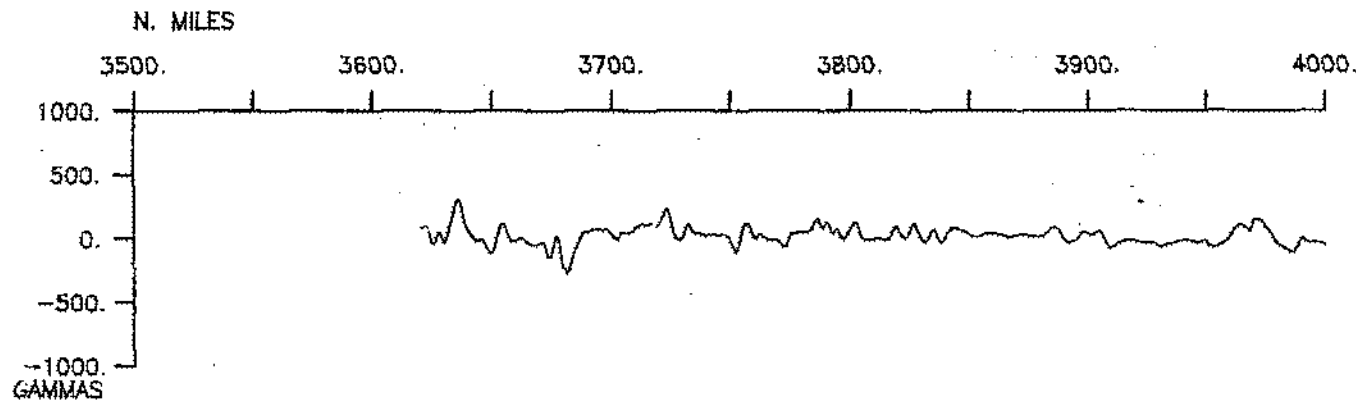
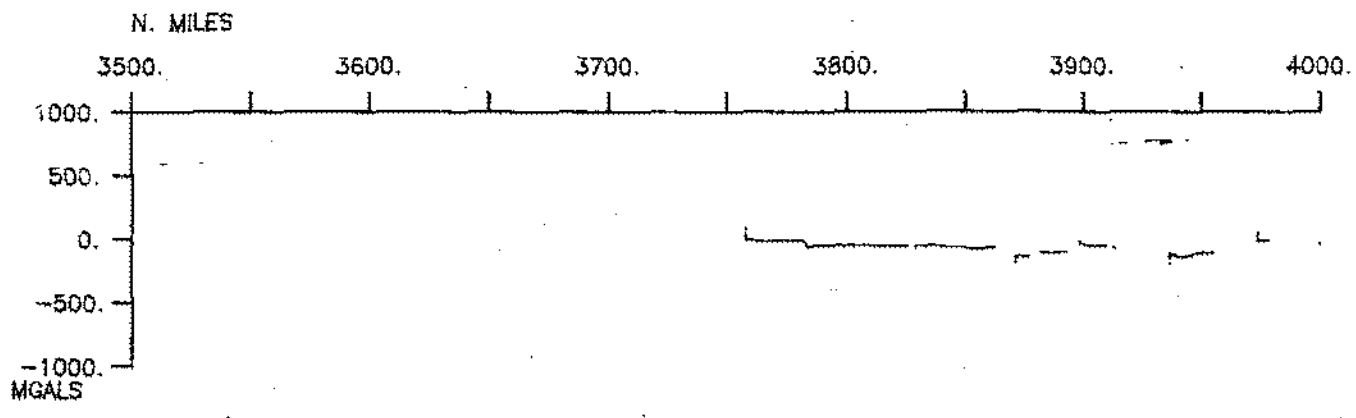


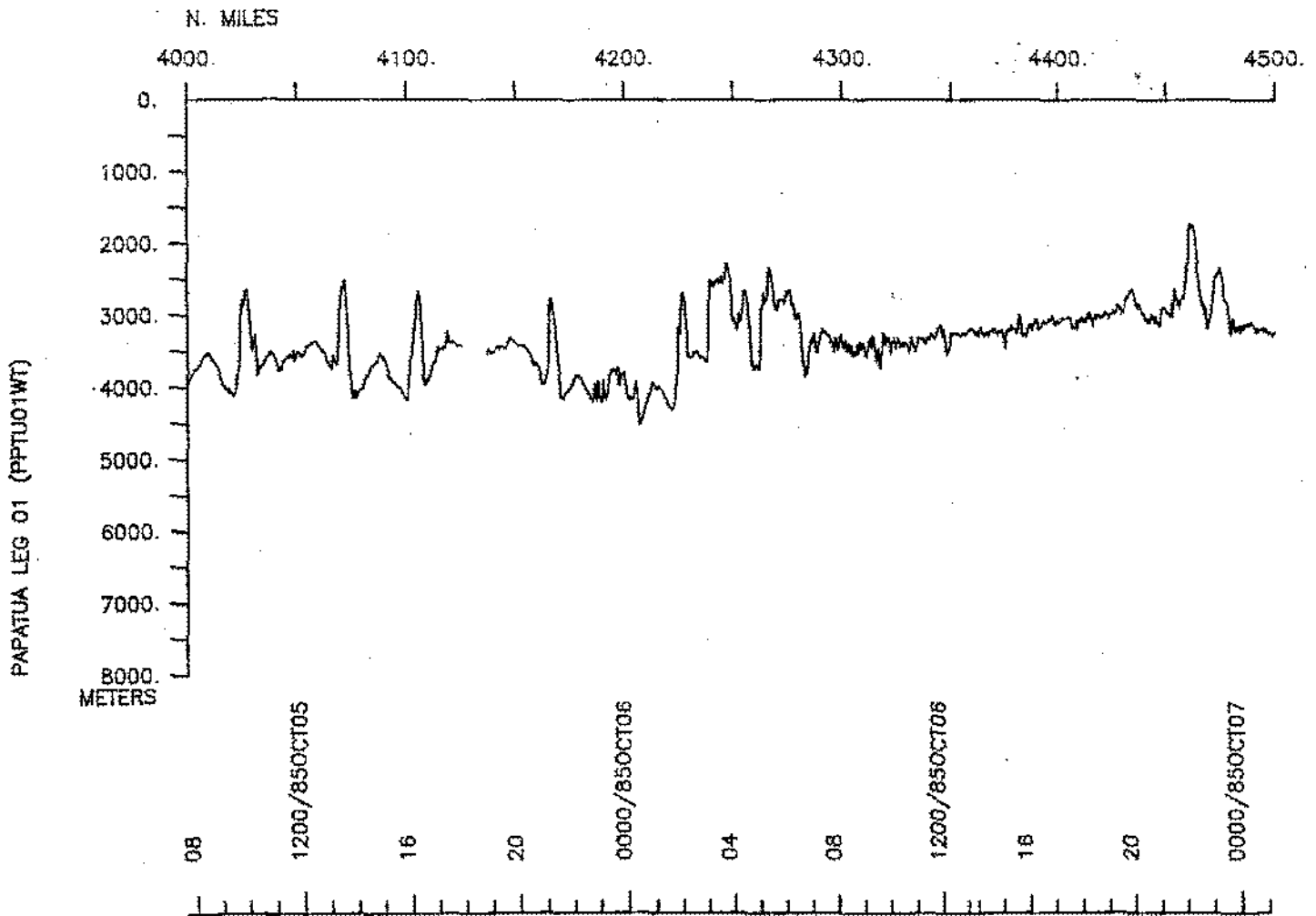
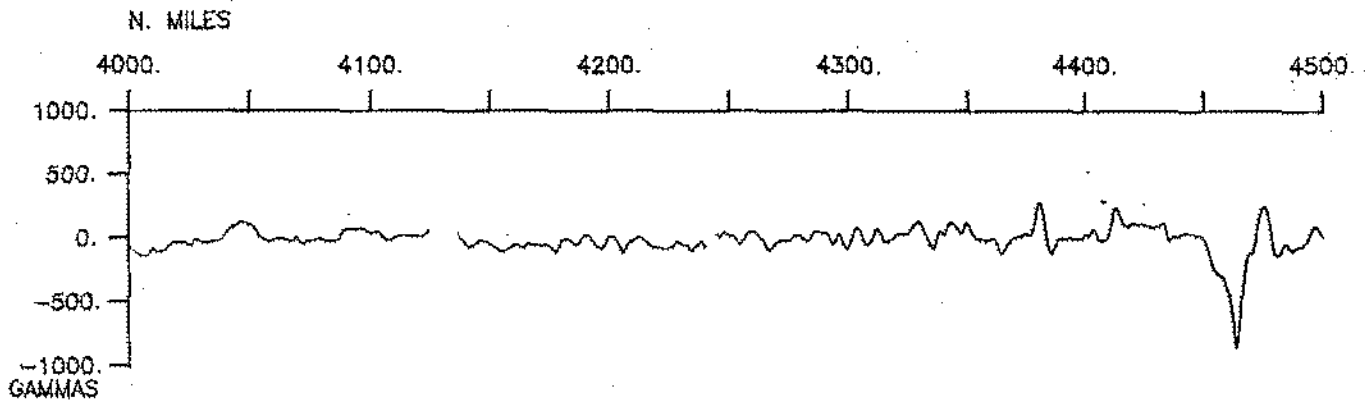
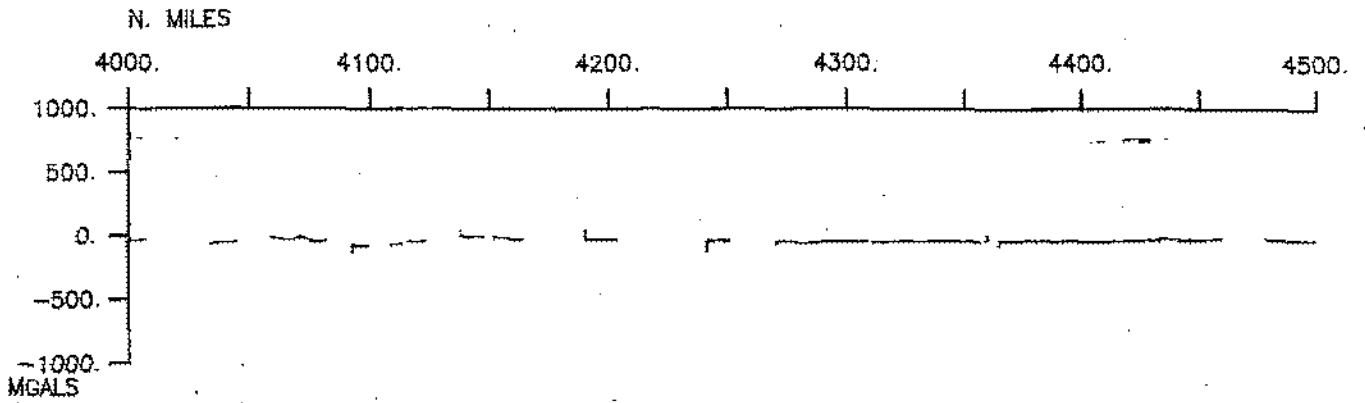


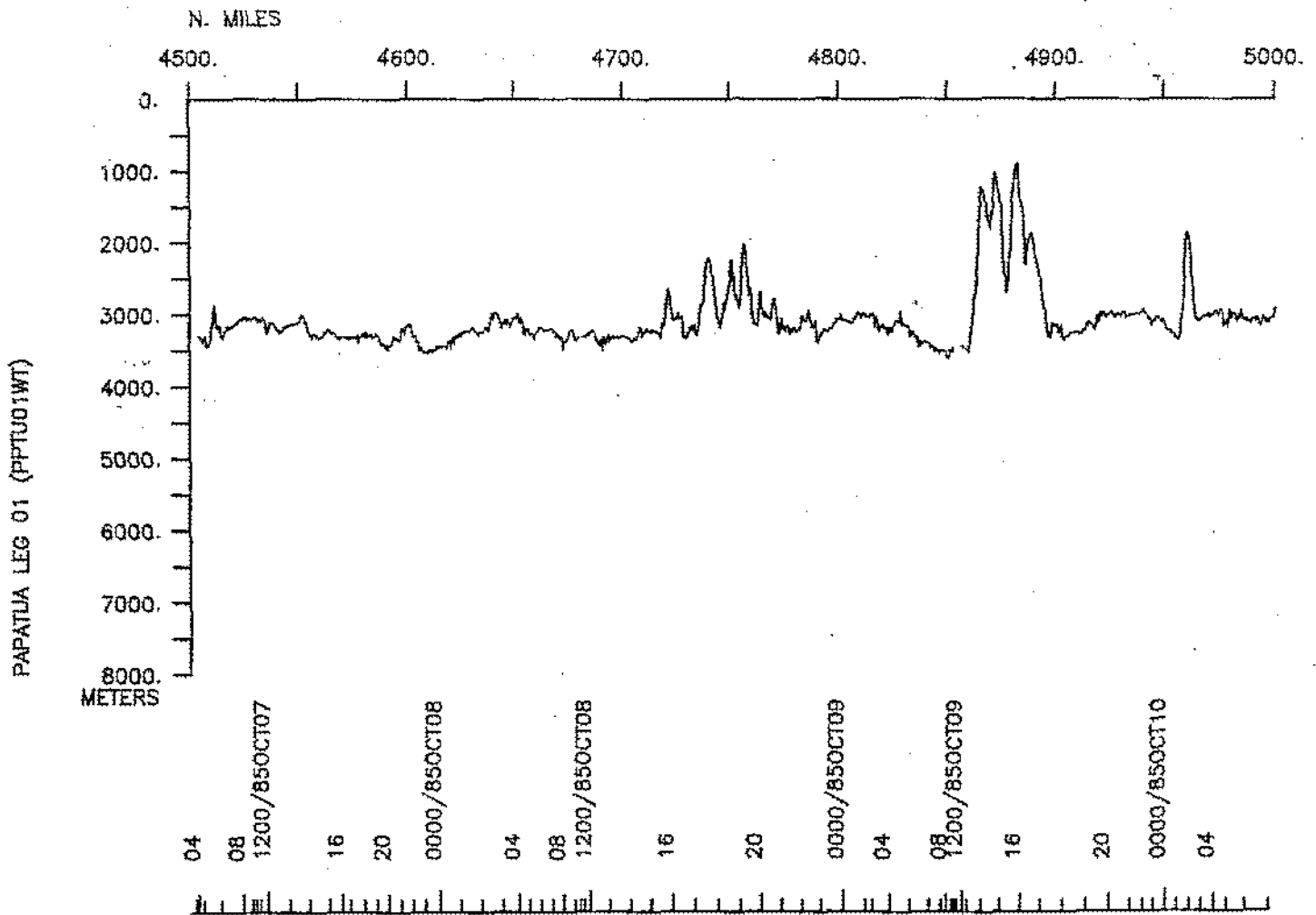
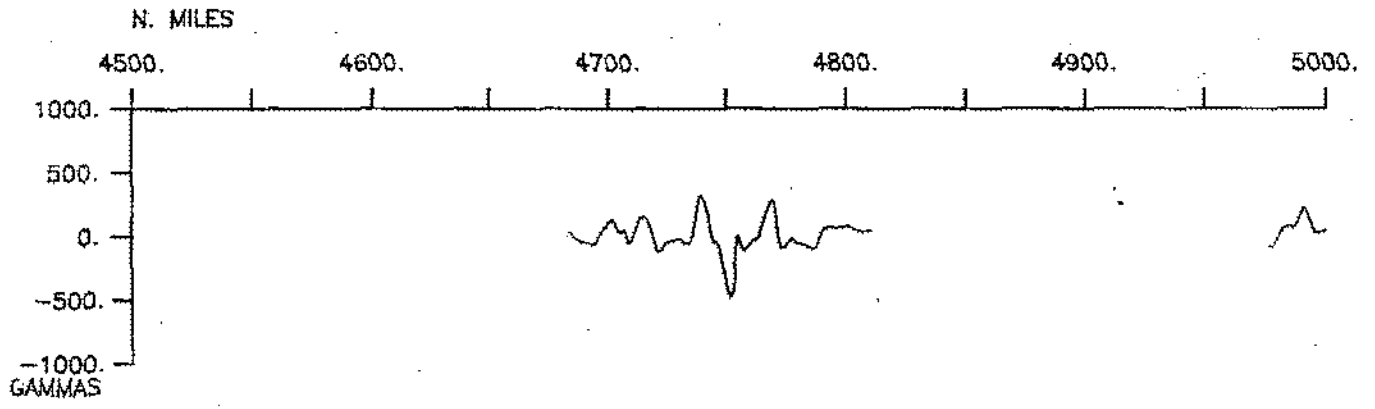
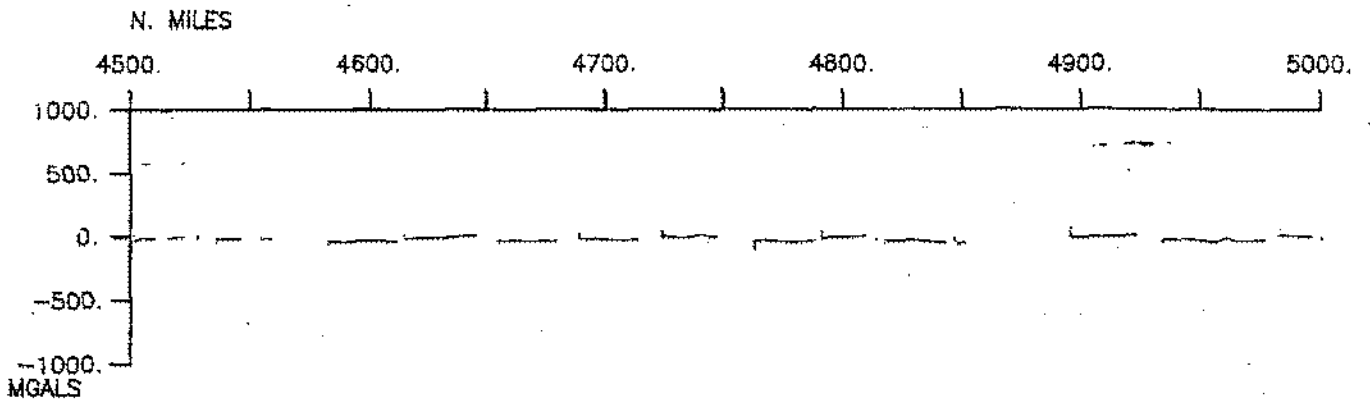




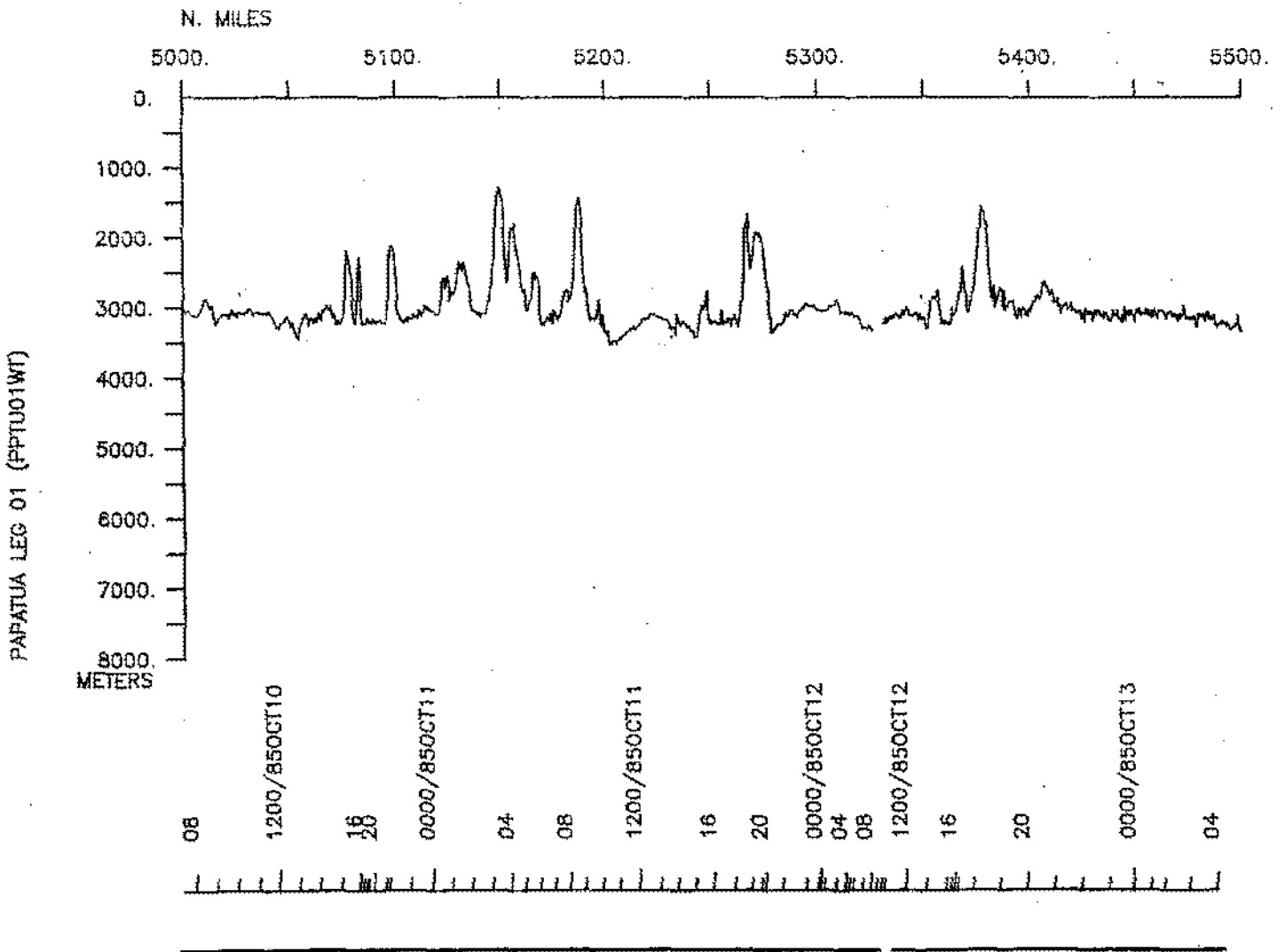
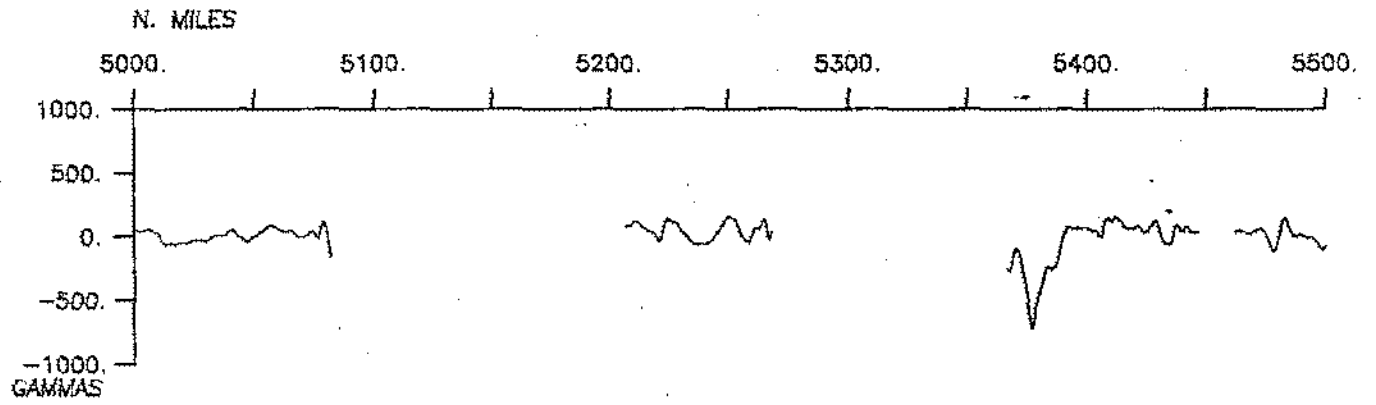
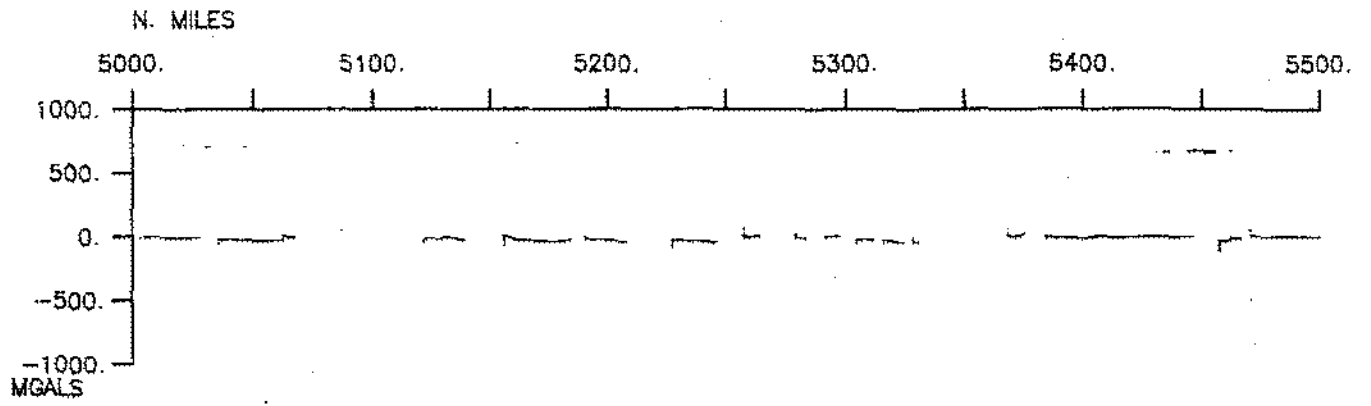


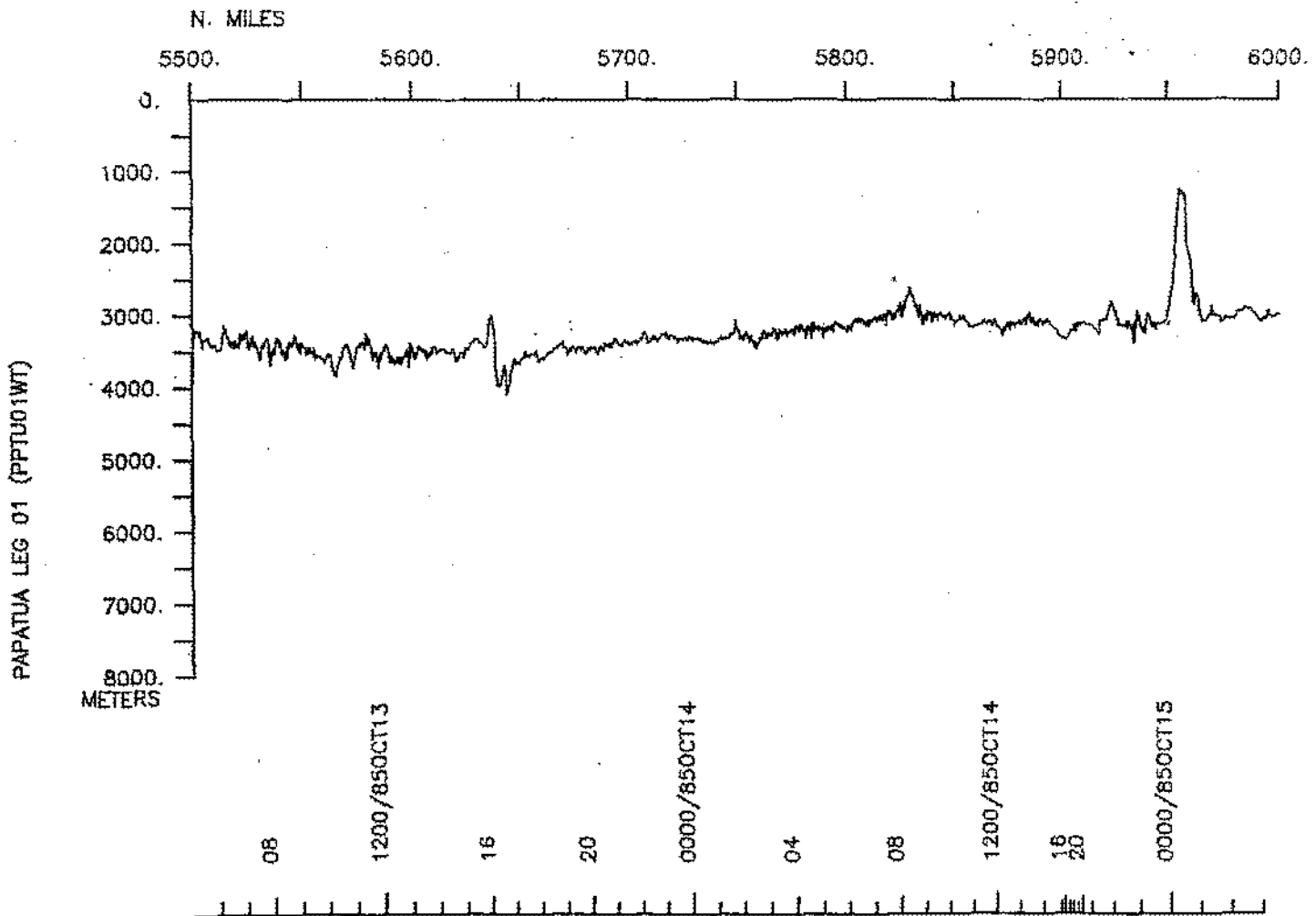
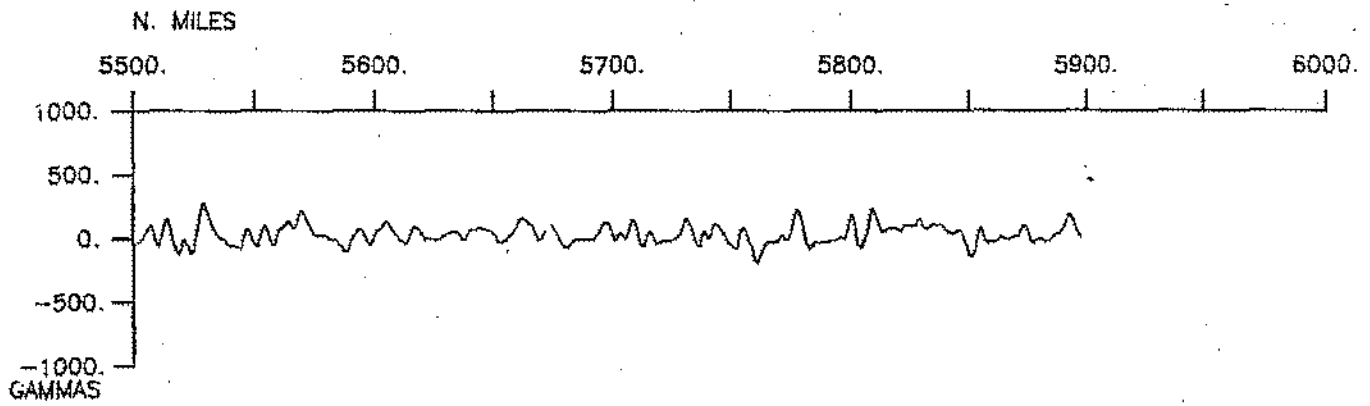
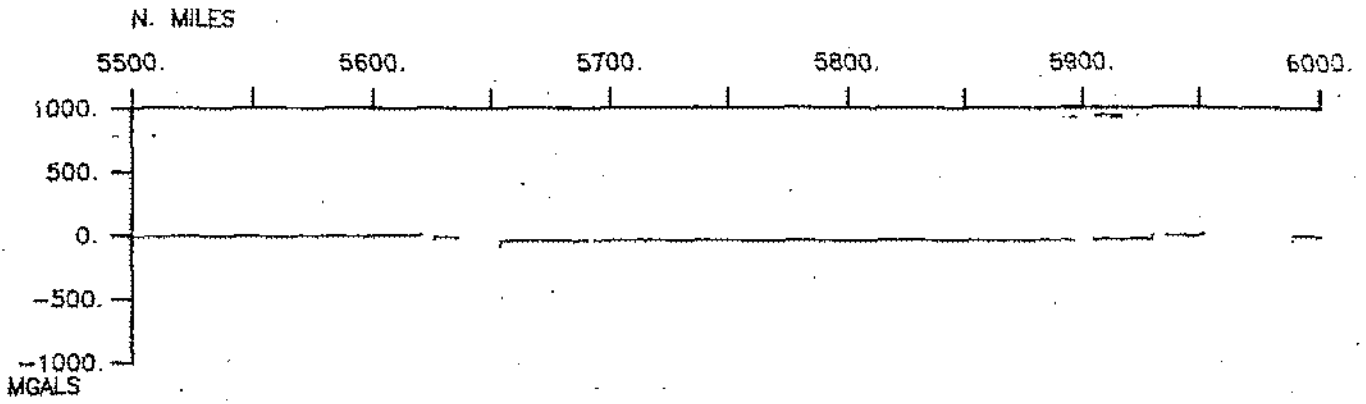


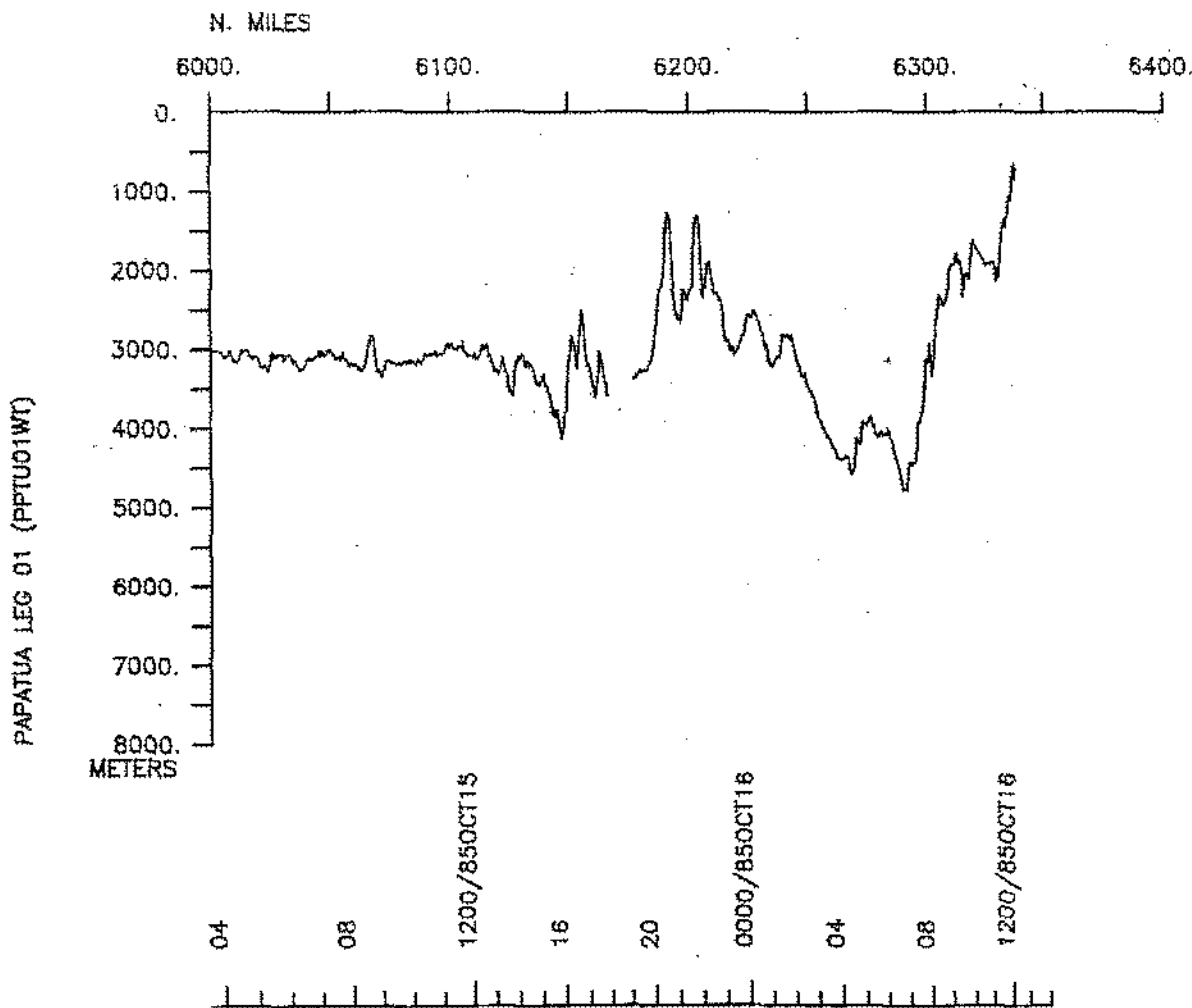
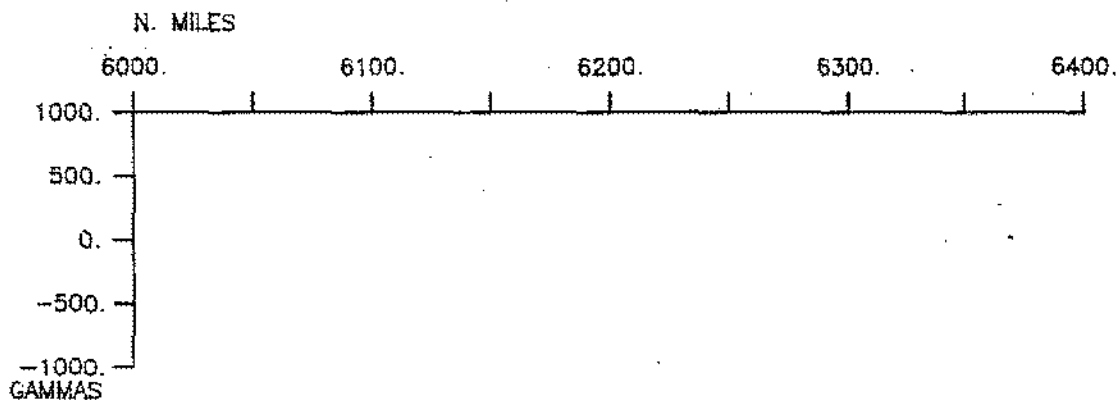
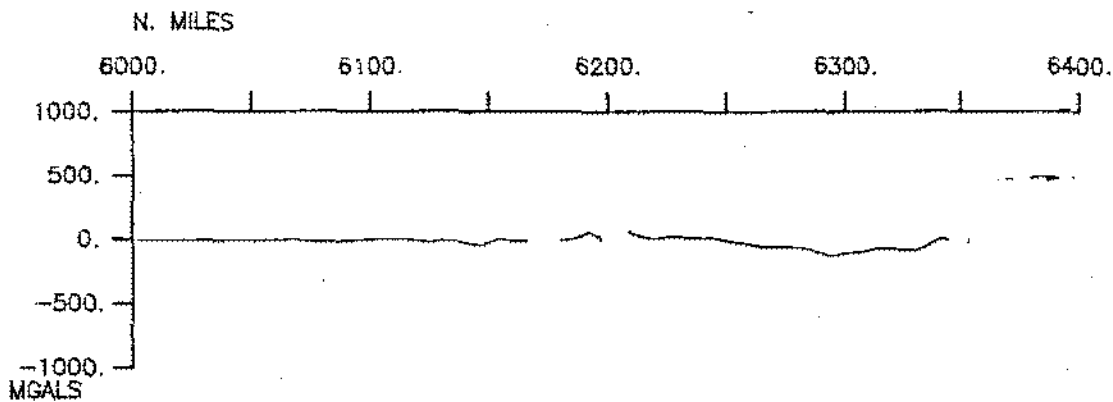












S.I.O. SAMPLE INDEX

(Issued February 1986)

PAPATUA EXPEDITION

Leg 1

San Diego, Calif. (17 September 1985)  
to  
Manzanillo, Mexico (16 October 1985)

R/V T. Washington

Chief Scientist - J. McClain (UCD)

Post-Cruise Processing and Report Preparation  
by S.I.O. Geological Data Center

Index Encoding Funded by NSF  
Grant Number OCE83-16603  
Index Processing and Report Preparation  
funded in part by SIA

The Sample Index is a first level interdisciplinary listing of time, position, sample identification and disposition of all samples, records and measurements collected on this cruise leg. The index data are encoded at sea by the resident marine technician and processed on shore by the S.I.O. Geological Data Center shortly after the completion of the cruise leg.

Positions are interpolated on the basis of sample time by comparison to a single, edited navigation file. Samples beginning at one time and position and ending at another are entered on two consecutive lines. Disposition and sample type are represented by three and four character codes to permit future computer searches on these parameters. (Listings defining these codes are available from the Geological Data Center.)

GDC Cruise I.D. #220

\*\*\*\*PORTS\*\*\*\*

2130 170985 LGPT B SAN DIEGO, CALIF 32-43 N 117-11 W fPPTU01WT  
 1400 161085 LGPT E MANZANILLO, MEX 19-03 N 104-20 W fPPTU01WT

|          |                  |                  |                     |          |
|----------|------------------|------------------|---------------------|----------|
| PECS UCD | MCCLAIN, J.S.    | CHIEF SCIENTIST  | UNIV. OF CAL. DAVIS | PPTU01WT |
| PECT MTG | ABBOTT, J.L.     | COMPUTER TECH.   | SCRIPPS INSTITUTE   | PPTU01WT |
| PERT MTG | BOAZ, J.T.       | RESIDENT TECH.   | SCRIPPS INSTITUTE   | PPTU01WT |
| PECT MTG | BOUCHARD, G.H.   | COMPUTER TECH.   | SCRIPPS INSTITUTE   | PPTU01WT |
| PESP IGP | BURNETT, M.S.    | RESEARCH ASST.   | SCRIPPS INSTITUTE   | PPTU01WT |
| PEST UCD | CROSS, K.D.      | STUDENT          | UNIV. OF CAL. DAVIS | PPTU01WT |
| PEET GRD | DOLAN, J.A.      | ELECT. TECH.     | SCRIPPS INSTITUTE   | PPTU01WT |
| PEST UCD | HART, M.         | STUDENT          | UNIV. OF CAL. DAVIS | PPTU01WT |
| PERT MTG | PILLARD, E.G.    | RESIDENT TECH.   | SCRIPPS INSTITUTE   | PPTU01WT |
| PERT UCD | SILZER, P.L.     | RESEARCH ASST.   | UNIV. OF CAL. DAVIS | PPTU01WT |
| PEBO MTG | SMITH, S.M.      | SEABEAM OPERATOR | SCRIPPS INSTITUTE   | PPTU01WT |
| PEST GRD | STOKKING, L.B.   | GRAD STUDENT     | SCRIPPS INSTITUTE   | PPTU01WT |
| PEST UCD | WERNER, K.       | STUDENT          | UNIV. OF CAL. DAVIS | PPTU01WT |
| PERT GRD | WILLOUGHBY, D.F. | ASSOC. DEV. ENG. | SCRIPPS INSTITUTE   | PPTU01WT |
| PERT UCD | WINTON, P.       | LAB ASST.        | UNIV. OF CAL. DAVIS | PPTU01WT |
| PEST UCD | WRIGHT, M.A.     | GRAD STUDENT     | UNIV. OF CAL. DAVIS | PPTU01WT |
| PEST UCD | DOOHER, J.       | STUDENT          | UNIV. OF CAL. DAVIS | PPTU01WT |
| PERT IGP | KIM, I.I.        | RESEARCH ASST.   | SCRIPPS INSTITUTE   | PPTU01WT |
| PERT IGP | SHEARER, P.M.    | RESEARCH ASST.   | SCRIPPS INSTITUTE   | PPTU01WT |
| PERT IGP | VOGAL, M.G.      | RESEARCH ASST.   | SCRIPPS INSTITUTE   | PPTU01WT |

\*\*\*\*NOTES\*\*\*\*

#AN 'X' IN THE (B)EGIN/(E)ND COLUMN FOLLOWING THE SAMPLE CODE INDICATES NO  
 #SAMPLE OR DATA RECOVERED. A 'C' INDICATES CONTINUATION OF DATA COLLECTION  
 #FROM BEFORE THE BEGINNING OR AFTER THE END OF A PARTICULAR LEG. (MOORED  
 #BOTTOM INSTRUMENTS, FOR EXAMPLE.) THE NUMBER APPEARING IN THE COLUMNS  
 #BETWEEN THE SAMPLE IDENTIFIER AND THE DISPOSITION CODE, FOR MANY SAMPLE  
 #ENTRIES, IS THE WATER DEPTH IN CORRECTED METERS. POSITIONS ARE IN TENTHS  
 #OF MINUTES.

| #GMT  | DDMMYY | LOC  | T | SAMP | SAMPLE     | DISP |      |       | CRUISE   |
|-------|--------|------|---|------|------------|------|------|-------|----------|
| #TIME | DATE   | TIME | Z | CODE | IDENTIFIER | CODE | LAT. | LONG. | LEG-SHIP |

\*\*\*\*UNDERWAY DATA CURATOR - S. M. SMITH EXT.2752

\*\*\*\*UNDERWAY WATCH LOG BOOKS\*\*\*\*

|             |                           |                      |           |
|-------------|---------------------------|----------------------|-----------|
| 0230 180985 | LBUW B UNDERWAY WATCH LOG | GDC 32-325N 117-136W | sPPTU01WT |
| 1215 161085 | LBUW E UNDERWAY WATCH LOG | GDC 15-248N 103-546W | sPPTU01WT |

| #GMT                       | DDMMYY | LOC  | T | SAMP | SAMPLE             | DISP |         | CRUISE   |           |
|----------------------------|--------|------|---|------|--------------------|------|---------|----------|-----------|
| #TIME                      | DATE   | TIME | Z | CODE | IDENTIFIER         | CODE | LAT.    | LONG.    | LEG-SHIP  |
| #                          |        |      |   |      |                    |      |         |          |           |
| #***SEABEAM SWATH BOOKS*** |        |      |   |      |                    |      |         |          |           |
| 2319                       | 170985 |      |   | MBSB | B SB SWATH BOOK-01 | GDC  | 32-325N | 117-136W | sPPTU01WT |
| 1700                       | 180985 |      |   | MBSB | E SB SWATH BOOK-01 | GDC  | 32-325N | 117-136W | sPPTU01WT |
| 1703                       | 180985 |      |   | MBSB | B SB SWATH BOOK-02 | GDC  | 32-325N | 117-136W | sPPTU01WT |
| 1334                       | 190985 |      |   | MBSB | E SB SWATH BOOK-02 | GDC  | 29-327N | 116-020W | sPPTU01WT |
| 1334                       | 190985 |      |   | MBSB | B SB SWATH BOOK-03 | GDC  | 29-327N | 116-020W | sPPTU01WT |
| 1250                       | 200985 |      |   | MBSB | E SB SWATH BOOK-03 | GDC  | 25-031N | 114-034W | sPPTU01WT |
| 1250                       | 200985 |      |   | MBSB | B SB SWATH BOOK-04 | GDC  | 25-031N | 114-034W | sPPTU01WT |
| 1516                       | 210985 |      |   | MBSB | E SB SWATH BOOK-04 | GDC  | 21-509N | 109-567W | sPPTU01WT |
| 1516                       | 210985 |      |   | MBSB | B SB SWATH BOOK-05 | GDC  | 21-509N | 109-567W | sPPTU01WT |
| 1643                       | 220985 |      |   | MBSB | E SB SWATH BOOK-05 | GDC  | 17-192N | 108-263W | sPPTU01WT |
| 1643                       | 220985 |      |   | MBSB | B SB SWATH BOOK-06 | GDC  | 17-192N | 108-263W | sPPTU01WT |
| 1653                       | 230985 |      |   | MBSB | E SB SWATH BOOK-06 | GDC  | 13-104N | 108-165W | sPPTU01WT |
| 1653                       | 230985 |      |   | MBSB | B SB SWATH BOOK-07 | GDC  | 13-104N | 108-165W | sPPTU01WT |
| 0300                       | 250985 |      |   | MBSB | E SB SWATH BOOK-07 | GDC  | 12-599N | 103-437W | sPPTU01WT |
| 0300                       | 250985 |      |   | MBSB | B SB SWATH BOOK-08 | GDC  | 12-599N | 103-437W | sPPTU01WT |
| 1218                       | 260985 |      |   | MBSB | E SB SWATH BOOK-08 | GDC  | 13-200N | 102-338W | sPPTU01WT |
| 1218                       | 260985 |      |   | MBSB | B SB SWATH BOOK-09 | GDC  | 13-200N | 102-338W | sPPTU01WT |
| 1356                       | 280985 |      |   | MBSB | E SB SWATH BOOK-09 | GDC  | 13-134N | 102-352W | sPPTU01WT |
| 1356                       | 280985 |      |   | MBSB | B SB SWATH BOOK-10 | GDC  | 13-134N | 102-352W | sPPTU01WT |
| 1045                       | 300985 |      |   | MBSB | E SB SWATH BOOK-10 | GDC  | 13-432N | 102-196W | sPPTU01WT |
| 1045                       | 300985 |      |   | MBSB | B SB SWATH BOOK-11 | GDC  | 13-432N | 102-196W | sPPTU01WT |
| 2045                       | 011085 |      |   | MBSB | E SB SWATH BOOK-11 | GDC  | 13-230N | 102-299W | sPPTU01WT |
| 2015                       | 011085 |      |   | MBSB | B SB SWATH BOOK-12 | GDC  | 13-208N | 102-321W | sPPTU01WT |
| 0640                       | 031085 |      |   | MBSB | E SB SWATH BOOK-12 | GDC  | 13-146N | 102-375W | sPPTU01WT |
| 0640                       | 031085 |      |   | MBSB | B SB SWATH BOOK-13 | GDC  | 13-146N | 102-375W | sPPTU01WT |
| 1333                       | 041085 |      |   | MBSB | E SB SWATH BOOK-13 | GDC  | 13-152N | 103-007W | sPPTU01WT |
| 1333                       | 041085 |      |   | MBSB | B SB SWATH BOOK-14 | GDC  | 13-152N | 103-007W | sPPTU01WT |
| 1410                       | 051085 |      |   | MBSB | E SB SWATH BOOK-14 | GDC  | 12-468N | 105-201W | sPPTU01WT |
| 1410                       | 051085 |      |   | MBSB | B SB SWATH BOOK-15 | GDC  | 12-468N | 105-201W | sPPTU01WT |
| 1533                       | 061085 |      |   | MBSB | E SB SWATH BOOK-15 | GDC  | 12-597N | 106-365W | sPPTU01WT |
| 1533                       | 061085 |      |   | MBSB | B SB SWATH BOOK-16 | GDC  | 12-597N | 106-365W | sPPTU01WT |
| 0728                       | 081085 |      |   | MBSB | E SB SWATH BOOK-16 | GDC  | 13-101N | 102-569W | sPPTU01WT |
| 0728                       | 081085 |      |   | MBSB | B SB SWATH BOOK-17 | GDC  | 13-101N | 102-569W | sPPTU01WT |
| 0145                       | 101085 |      |   | MBSB | E SB SWATH BOOK-17 | GDC  | 13-266N | 103-039W | sPPTU01WT |

| #GMT<br>#TIME               | DDMMYY<br>DATE | LOC<br>TIME | T<br>Z | SAMP<br>CODE | SAMPLE<br>IDENTIFIER | DISP<br>CODE | LAT.    | LONG.    | CRUISE<br>LEG-SHIP |
|-----------------------------|----------------|-------------|--------|--------------|----------------------|--------------|---------|----------|--------------------|
| 0145                        | 101085         |             |        | MBSB B       | SB SWATH BOOK-18     | GDC          | 13-266N | 103-039W | sPPTU01WT          |
| 1521                        | 111085         |             |        | MBSB E       | SB SWATH BOOK-18     | GDC          | 12-571N | 103-136W | sPPTU01WT          |
| 1521                        | 111085         |             |        | MBSB B       | SB SWATH BOOK-19     | GDC          | 12-571N | 103-136W | sPPTU01WT          |
| 0830                        | 131085         |             |        | MBSB E       | SB SWATH BOOK-19     | GDC          | 13-128N | 102-520W | sPPTU01WT          |
| 0830                        | 131085         |             |        | MBSB B       | SB SWATH BOOK-20     | GDC          | 13-128N | 102-520W | sPPTU01WT          |
| 0837                        | 141085         |             |        | MBSB B       | SB SWATH BOOK-20     | GDC          | 12-322N | 105-533W | sPPTU01WT          |
| 0843                        | 141085         |             |        | MBSB B       | SB SWATH BOOK-21     | GDC          | 12-322N | 105-546W | sPPTU01WT          |
| 1605                        | 151085         |             |        | MBSB E       | SB SWATH BOOK-21     | GDC          | 13-126N | 102-521W | sPPTU01WT          |
| 1605                        | 151085         |             |        | MBSB B       | SB SWATH BOOK-22     | GDC          | 13-126N | 102-521W | sPPTU01WT          |
| 1217                        | 161085         |             |        | MBSB E       | SB SWATH BOOK-22     | GDC          | 15-251N | 103-547W | sPPTU01WT          |
| ***SEABEAM MONITOR***       |                |             |        |              |                      |              |         |          |                    |
| 2000                        | 170985         |             |        | MBMR B       | EPC SB MONITOR-01    | GDC          | 32-325N | 117-136W | sPPTU01WT          |
| 1505                        | 200985         |             |        | MBMR E       | EPC SB MONITOR-01    | GDC          | 24-384N | 113-496W | sPPTU01WT          |
| 1516                        | 200985         |             |        | MBMR B       | EPC SB MONITOR-02    | GDC          | 24-363N | 113-486W | sPPTU01WT          |
| 1030                        | 240985         |             |        | MBMR E       | EPC SB MONITOR-03    | GDC          | 12-505N | 106-205W | sPPTU01WT          |
| 1040                        | 240985         |             |        | MBMR B       | EPC SB MONITOR-03    | GDC          | 12-486N | 106-199W | sPPTU01WT          |
| 1508                        | 280985         |             |        | MBMR E       | EPC SB MONITOR-03    | GDC          | 13-022N | 102-355W | sPPTU01WT          |
| 1513                        | 280985         |             |        | MBMR B       | EPC SB MONITOR-04    | GDC          | 13-014N | 102-355W | sPPTU01WT          |
| 0138                        | 021085         |             |        | MBMR E       | EPC SB MONITOR-04    | GDC          | 13-409N | 102-089W | sPPTU01WT          |
| 0150                        | 021085         |             |        | MBMR B       | EPC SB MONITOR-05    | GDC          | 13-412N | 102-082W | sPPTU01WT          |
| 1628                        | 051085         |             |        | MBMR E       | EPC SB MONITOR-05    | GDC          | 12-416N | 105-482W | sPPTU01WT          |
| 1636                        | 051985         |             |        | MBMR B       | EPC SB MONITOR-06    | GDC          | 32-325N | 117-136W | sPPTU01WT          |
| 1252                        | 091085         |             |        | MBMR E       | EPC SB MONITOR-06    | GDC          | 13-294N | 102-415W | sPPTU01WT          |
| 1306                        | 091985         |             |        | MBMR B       | EPC SB MONITOR-07    | GDC          | 32-325N | 117-136W | sPPTU01WT          |
| 1400                        | 131085         |             |        | MBMR E       | EPC SB MONITOR-07    | GDC          | 12-591N | 103-156W | sPPTU01WT          |
| 1432                        | 131085         |             |        | MBMR B       | EPC SB MONITOR-08    | GDC          | 12-590N | 103-161W | sPPTU01WT          |
| 1200                        | 161085         |             |        | MBMR E       | EPC SB MONITOR-08    | GDC          | 15-225N | 103-542W | sPPTU01WT          |
| ***SEABEAM SURVEYS***       |                |             |        |              |                      |              |         |          |                    |
| 0100                        | 230985         |             |        | MBSV B       | SB SURV.W.O'GORMAN   | GDC          | 15-497N | 108-303W | sPPTU01WT          |
| 2230                        | 131085         |             |        | MBSV E       | SB SURV.W.O'GORMAN   | GDC          | 12-442N | 104-202W | sPPTU01WT          |
| 2128                        | 230985         |             |        | MBSV B       | SB SURV.E.O'GORMAN   | GDC          | 13-371N | 107-335W | sPPTU01WT          |
| 0200                        | 151085         |             |        | MBSV E       | SB SURV.E.O'GORMAN   | GDC          | 13-097N | 105-202W | sPPTU01WT          |
| ***SEABEAM TRANSIT LINES*** |                |             |        |              |                      |              |         |          |                    |
| 2300                        | 170985         |             |        | MBTL B       | SB TRANSIT LINE      | GDC          | 32-325N | 117-136W | sPPTU01WT          |
| 2300                        | 230985         |             |        | MBTL E       | SB TRANSIT LINE      | GDC          | 13-223N | 107-228W | sPPTU01WT          |

| #GMT<br>#TIME<br>#                | DDMMYY<br>DATE<br>--- | LOC T<br>TIME Z<br>--- | SAMP<br>CODE | SAMPLE<br>IDENTIFIBR | DISP<br>CODE | LAT.    | LONG.    | CRUISE<br>LEG-SHIP |
|-----------------------------------|-----------------------|------------------------|--------------|----------------------|--------------|---------|----------|--------------------|
| ***MAGNETOMETER***                |                       |                        |              |                      |              |         |          |                    |
| 0001                              | 220985                |                        | MGRA B       | MAGNETICS R-01       | GDC          | 20-235N | 109-037W | sPPTU01WT          |
| 1440                              | 141085                |                        | MGRA E       | MAGNETICS R-01       | GDC          | 12-480N | 107-091W | sPPTU01WT          |
| ***EXPENDABLE BATHYTHERMOGRAPH*** |                       |                        |              |                      |              |         |          |                    |
| 1535                              | 200985                |                        | BTXP         | XBT-01               | GDC          | 24-328N | 113-471W | sPPTU01WT          |
| 1916                              | 051085                |                        | BTXP         | XBT-02               | GDC          | 12-544N | 106-175W | sPPTU01WT          |
| 2033                              | 081085                |                        | BTXP         | XBT-03               | GDC          | 13-183N | 102-454W | sPPTU01WT          |
| ***THERMOGRAPHS***                |                       |                        |              |                      |              |         |          |                    |
| 2124                              | 170985                |                        | TGRC B       | THERMOGRAPHS 1-21    | GDC          | 32-325N | 117-136W | sPPTU01WT          |
| 1400                              | 161085                |                        | TGRC E       | THERMOGRAPHS 1-21    | GDC          | 15-413N | 103-575W | sPPTU01WT          |
| ***GRAVIMETER***                  |                       |                        |              |                      |              |         |          |                    |
| 0230                              | 180985                |                        | GVRA B       | GRAVITY R-01         | GDC          | 32-325N | 117-136W | sPPTU01WT          |
| 1219                              | 161085                |                        | GVRA E       | GRAVITY R-01         | GDC          | 15-254N | 103-547W | sPPTU01WT          |
| ***SEISMIC LINES***               |                       |                        |              |                      |              |         |          |                    |
| 1600                              | 290985                |                        | SRCS B       | SEIS. RUN PPTU01-01  | UCD          | 13-153N | 102-412W | sPPTU01WT          |
| 0055                              | 300985                |                        | SRCS E       | RV/SP/EX/OB/DG       | UCD          | 13-269N | 102-318W | sPPTU01WT          |
| 1600                              | 300985                |                        | SRCS B       | SEIS. RUN PPTU01-02  | UCD          | 13-457N | 102-431W | sPPTU01WT          |
| 0055                              | 010185                |                        | SRCS E       | RV/SP/EX/OB/DG       | UCD          | 32-325N | 117-136W | sPPTU01WT          |
| 1600                              | 011085                |                        | SRCS B       | SEIS. RUN PPTU01-03  | UCD          | 13-067N | 102-512W | sPPTU01WT          |
| 2000                              | 011085                |                        | SRCS E       | FN/EX/OB/DG          | UCD          | 13-197N | 102-331W | sPPTU01WT          |
| 2100                              | 011085                |                        | SRCS B       | SEIS. RUN PPTU01-04  | UCD          | 13-240N | 102-288W | sPPTU01WT          |
| 0100                              | 021085                |                        | SRCS E       | FN/EX/OB/DG          | UCD          | 13-401N | 102-110W | sPPTU01WT          |
| 1800                              | 031085                |                        | SRCS B       | SEIS. RUN PPTU01-05  | UCD          | 13-194N | 102-345W | sPPTU01WT          |
| 1920                              | 031085                |                        | SRCS E       | RV/SP/EX/OB/DG       | UCD          | 13-190N | 102-331W | sPPTU01WT          |
| 1800                              | 071085                |                        | SRCS B       | SEIS. RUN PPTU01-06  | UCD          | 12-526N | 104-206W | sPPTU01WT          |
| 2345                              | 071085                |                        | SRCS E       | RV/EX/OB/DG          | UCD          | 13-058N | 103-106W | sPPTU01WT          |
| 0400                              | 081085                |                        | SRCS B       | SEIS. RUN PPTU01-07  | UCD          | 13-114N | 102-516W | sPPTU01WT          |
| 0855                              | 081085                |                        | SRCS B       | RV/EX/OB/DG          | UCD          | 13-191N | 103-006W | sPPTU01WT          |
| 2100                              | 091085                |                        | SRCS B       | SEIS. RUN PPTU01-08  | UCD          | 13-055N | 103-125W | sPPTU01WT          |
| 0455                              | 091085                |                        | SRCS E       | RV/SP/EX/OB/DG       | UCD          | 13-230N | 102-562W | sPPTU01WT          |
| 0400                              | 111085                |                        | SRCS B       | SEIS. RUN PPTU01-09  | UCD          | 12-577N | 102-430W | sPPTU01WT          |
| 1055                              | 111085                |                        | SRCS E       | RV/FN/EX/OB/DG       | UCD          | 13-140N | 103-102W | sPPTU01WT          |



| #GMT  | DDMMYY | LOC  | T | SAMP | SAMPLE     | DISP |      |       | CRUISE   |
|-------|--------|------|---|------|------------|------|------|-------|----------|
| #TIME | DATE   | TIME | Z | CODE | IDENTIFIER | CODE | LAT. | LONG. | LEG-SHIP |

\*\*\*\*OCEAN BOTTOM SEISMOMETERS\*\*\*\*

|      |        |  |  |      |              |     |         |          |           |
|------|--------|--|--|------|--------------|-----|---------|----------|-----------|
| 1753 | 240985 |  |  | SBOB | B OBS KAREN  | IGP | 12-532N | 105-240W | sPPTU01WT |
| 1136 | 081085 |  |  | SBOB | E OBS KAREN  | IGP | 13-202N | 102-589W | sPPTU01WT |
| 0955 | 250985 |  |  | SBOB | B OBS PHRED  | IGP | 13-243N | 102-291W | sPPTU01WT |
| 1445 | 091085 |  |  | SBOB | E OBS PHRED  | IGP | 13-149N | 102-530W | sPPTU01WT |
| 1723 | 260985 |  |  | SBOB | B OBS LYNN   | IGP | 13-218N | 102-330W | sPPTU01WT |
| 0648 | 021085 |  |  | SBOB | E OBS LYNN   | IGP | 13-424N | 102-163W | sPPTU01WT |
| 1207 | 270985 |  |  | SBOB | B OBS SUZY   | IGP | 13-149N | 102-250W | sPPTU01WT |
| 0529 | 031085 |  |  | SBOB | E OBS SUZY   | IGP | 13-148N | 102-377W | sPPTU01WT |
| 0442 | 280985 |  |  | SBOB | B OBS JANICE | IGP | 13-351N | 102-152W | sPPTU01WT |
| 2005 | 111085 |  |  | SBOB | E OBS JANICE | IGP | 12-582N | 103-167W | sPPTU01WT |
| 0350 | 290985 |  |  | SBOB | B OBS JUAN   | IGP | 13-060N | 102-502W | sPPTU01WT |
| 2338 | 031085 |  |  | SBOB | E OBS JUAN   | IGP | 13-467N | 102-412W | sPPTU01WT |
| 0321 | 071085 |  |  | SBOB | B OBS SUZY   | IGP | 12-571N | 106-567W | sPPTU01WT |
| 1637 | 141085 |  |  | SBOB | E OBS SUZY   | IGP | 13-091N | 107-054W | sPPTU01WT |
| 1045 | 071085 |  |  | SBOB | B OBS LYNN   | IGP | 12-387N | 105-371W | sPPTU01WT |
| 0520 | 121085 |  |  | SBOB | E OBS LYNN   | IGP | 13-004N | 103-213W | sPPTU01WT |
| 0205 | 091085 |  |  | SBOB | B OBS KAREN  | IGP | 13-245N | 102-539W | sPPTU01WT |
| 0055 | 121085 |  |  | SBOB | E OBS KAREN  | IGP | 13-035N | 103-260W | sPPTU01WT |
| 1722 | 101085 |  |  | SBOB | B OBS PHRED  | IGP | 13-215N | 102-353W | sPPTU01WT |
| 1703 | 121085 |  |  | SBOB | E OBS PHRED  | IGP | 13-093N | 102-408W | sPPTU01WT |

# END SAMPLE INDEX