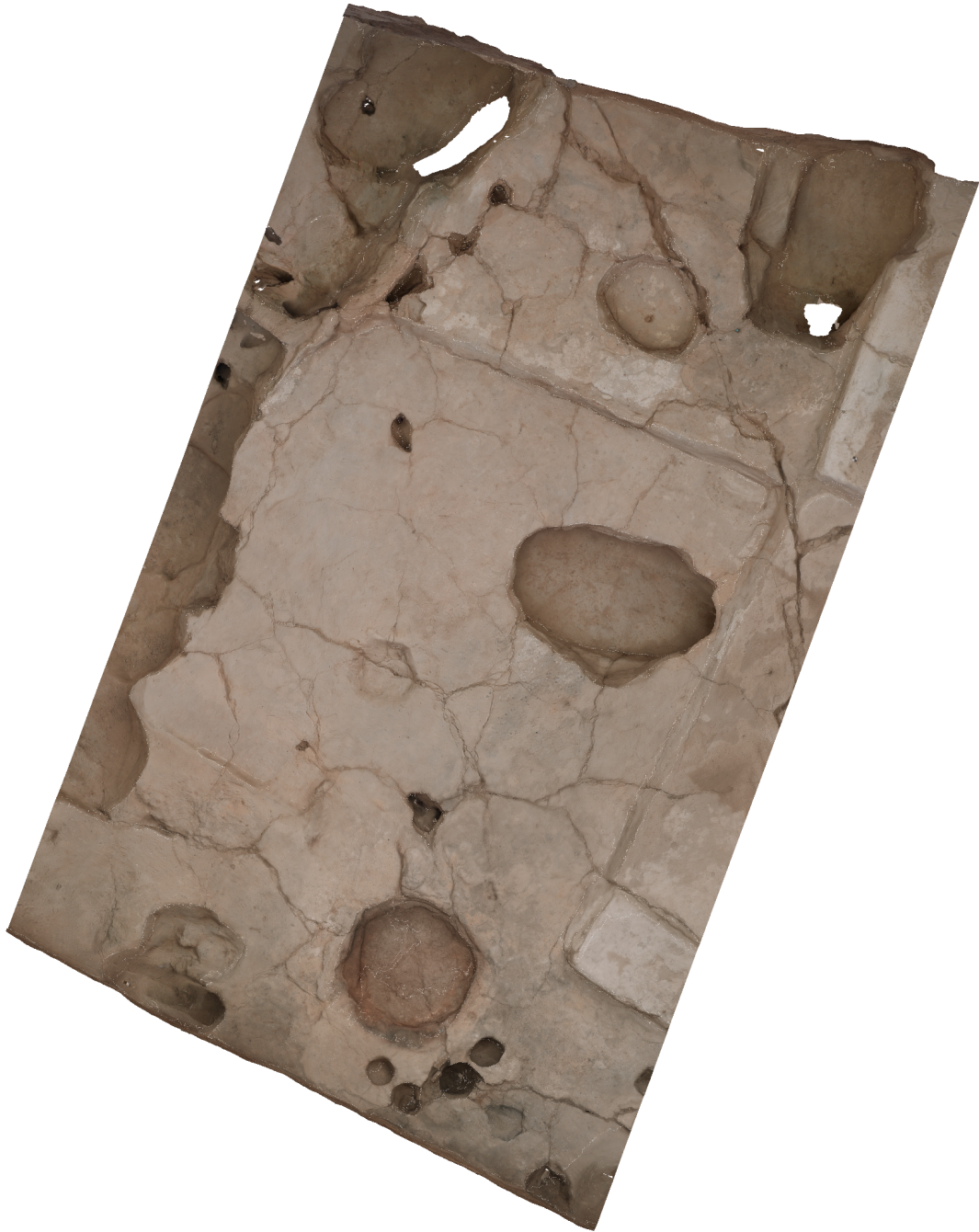


# Agisoft PhotoScan

Processing Report  
06 November 2014



# Survey Data

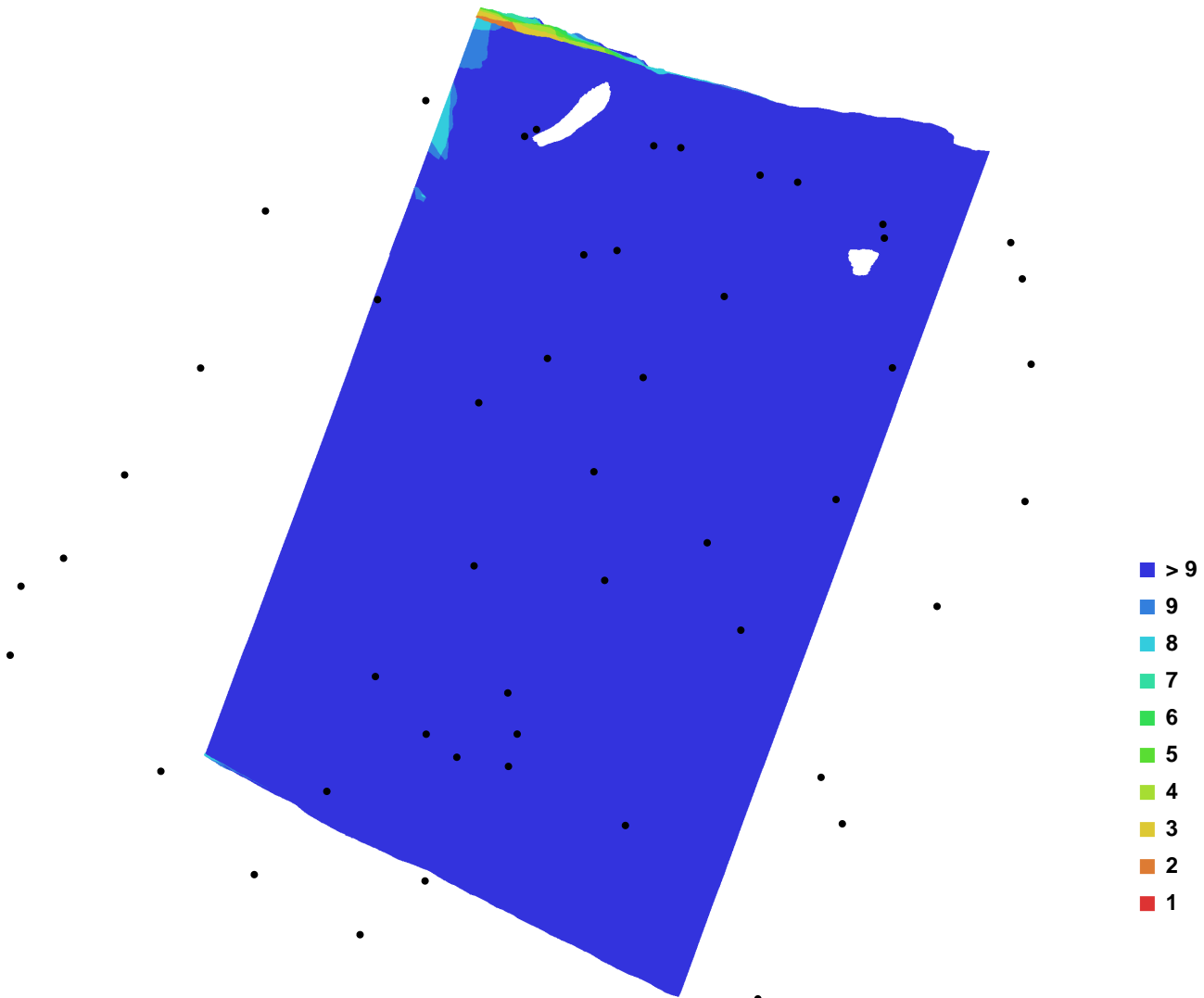


Fig. 1. Camera locations and image overlap.

Number of images:	53	Camera stations:	52
Flying altitude:	2.57126 m	Tie-points:	190706
Ground resolution:	0.000458378 m/pix	Projections:	513249
Coverage area:	1.32333e-005 sq km	Error:	0.947536 pix

Camera Model	Resolution	Focal Length	Pixel Size	Precalibrated
Canon EOS M (18 mm)	5184 x 3456	18 mm	4.384 x 4.384 um	No

Table. 1. Cameras.

# Digital Elevation Model

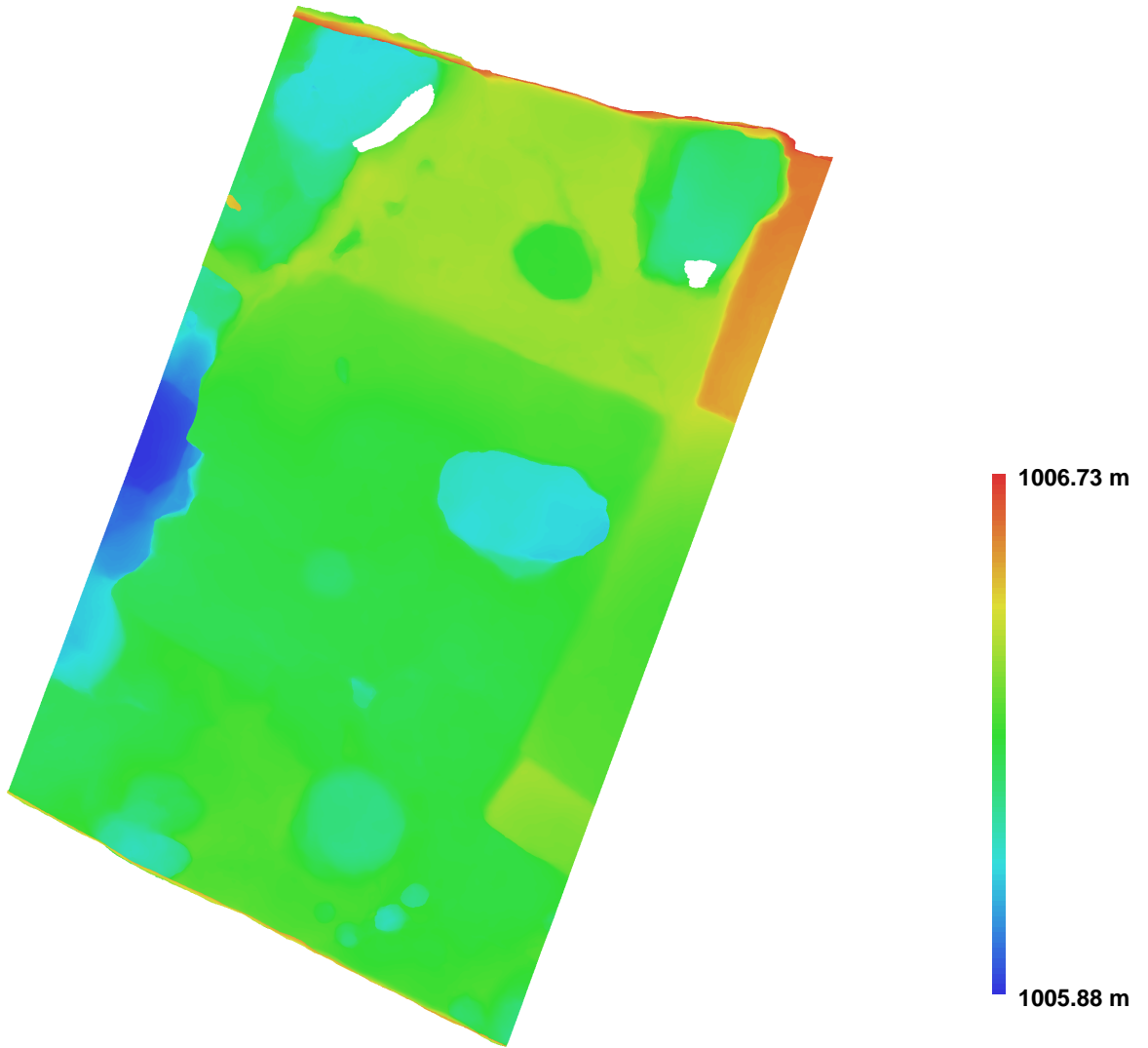


Fig. 2. Reconstructed digital elevation model.

Resolution: 0.00677507 m/pix  
Point density: 21785.8 points per sq m