

**Report and Index of
Underway Marine Geophysical Data**

Drift Expedition

Leg 14

(DRFT14RR)

R/V Revelle

(Issued August 2002)

Ports:

Honolulu, Hawaii (24 April 2002)

to

Honolulu, Hawaii (3 May 2002)

Chief Scientist: Peter Worcester
Scripps Institution of Oceanography
pworcester@ucsd.edu

Computer Tech – Bill French
Resident Tech – Ron Comer

Post-Cruise processing and report preparation by the
Shipboard Technical Support Group,
Scripps Institution of Oceanography
La Jolla, CA 92093-0223

NOTE: *This is an index of underway geophysical data edited and processed after the completion of the cruise leg and is intended primarily for informal use within the institution. This document is not to be reproduced or distributed outside Scripps without prior approval of the chief scientist or Shipboard Technical Support, Scripps Institution of Oceanography, La Jolla, California 92093-0223.*

STS Cruise ID# 297

**Report and Index of Navigation
and Underway Geophysical Data**

Processed by the Shipboard Technical Support Group
Scripps Institution of Oceanography

Contents:

Index Chart – gives track of cruise leg, dates, ports, and mileage of each type of data collected.

Track Charts– annotated with dates and hour ticks

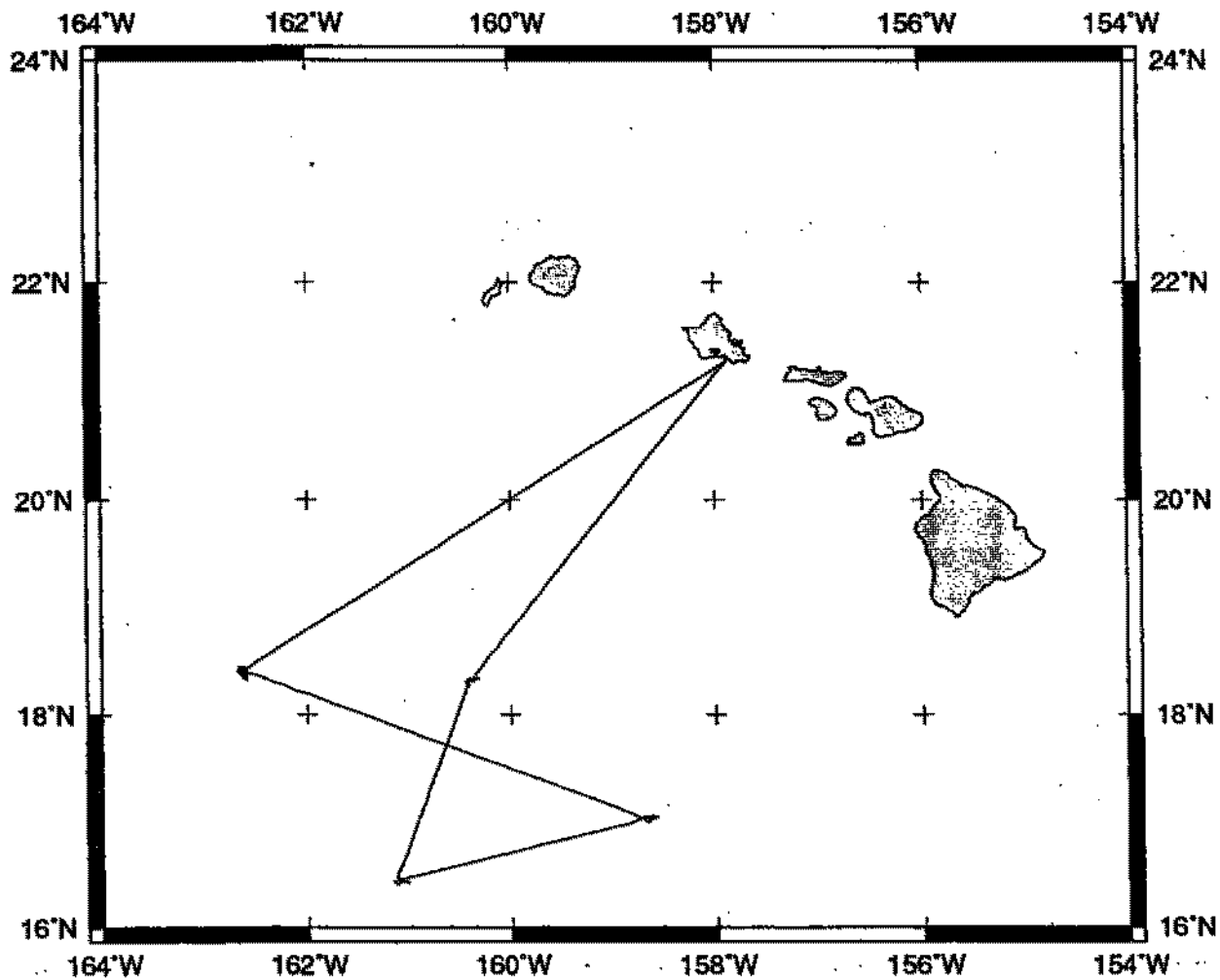
Profiles – depth, magnetic and gravity free air anomaly vs. distance. (Sections of track with seismic reflection data have a wide black line along the bottom of the profile.)

Sample Index – list of begin/end times and positions of all underway records as well as samples and measurements from other disciplines collected on the leg.

NOTE:

For information on the availability of this current digital data as well as archived digital data contact Stephen P. Miller, Geological Data Center, Scripps Institution of Oceanography, La Jolla, California 92093-0220 Phone: (858)534-1898, internet email: spmiller@ucsd.edu; or his Website: <http://SIOExplorer@ucsd.edu>

Rev 6/2001



DRIFT EXPEDITION LEG 14 (DRFT14RR)

CHIEF SCIENTIST: Peter Worcester, Scripps Institution

PORTS: Honolulu - Honolulu, Hawaii

DATES: 24 April - 03 May 2002

SHIP: R/V Revelle

TOTAL MILEAGE OF UNDERWAY DATA COLLECTED

Cruise-1199 miles

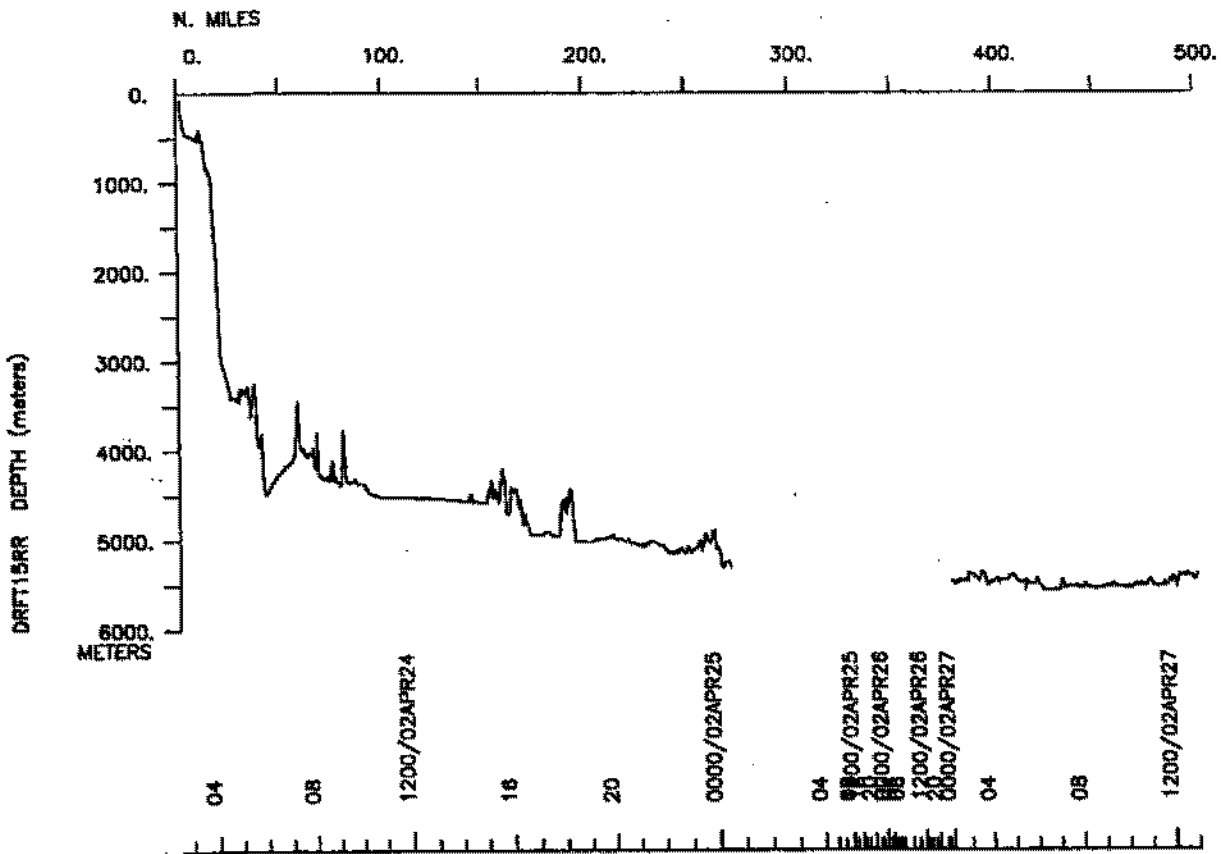
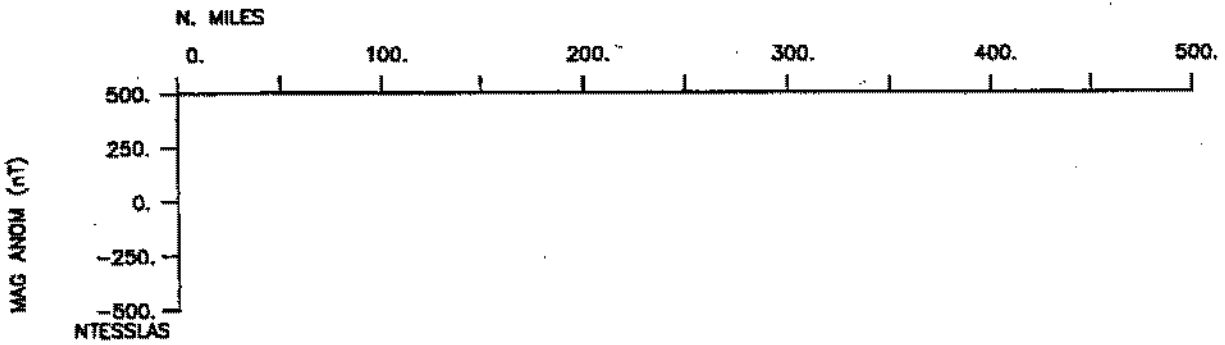
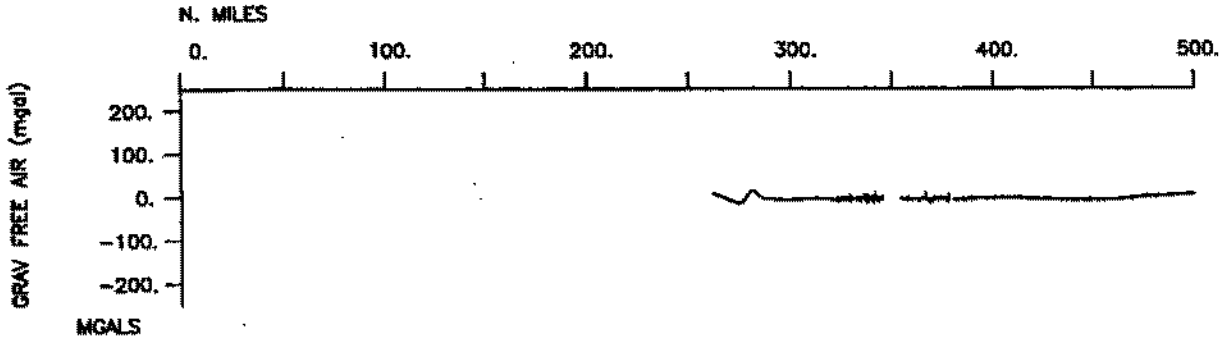
Magnetics-none collected

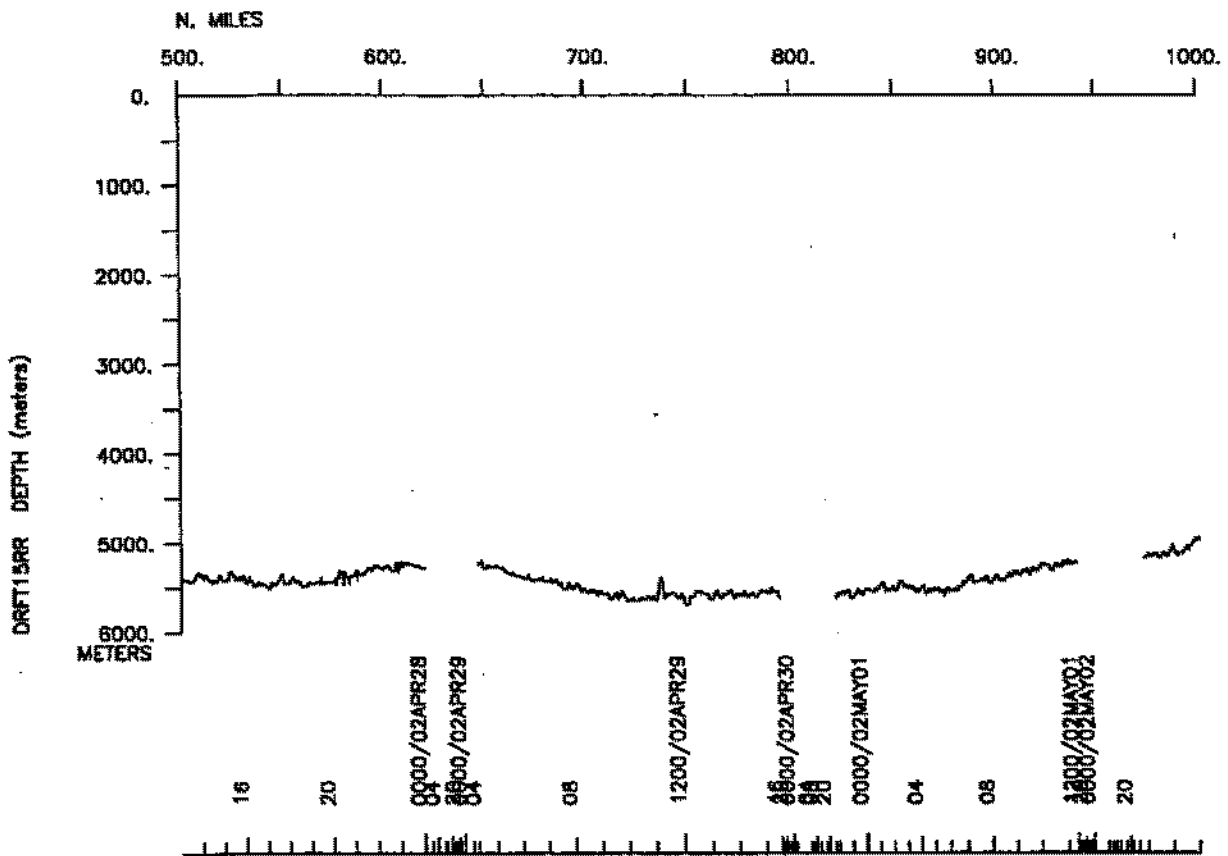
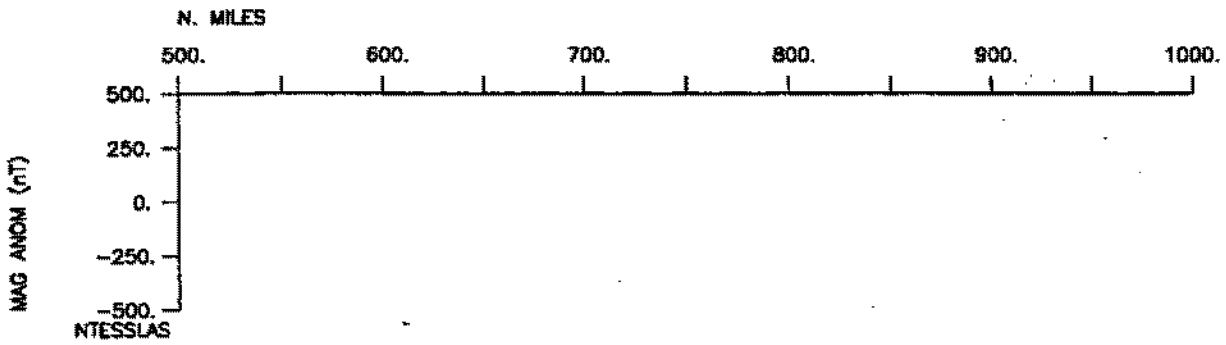
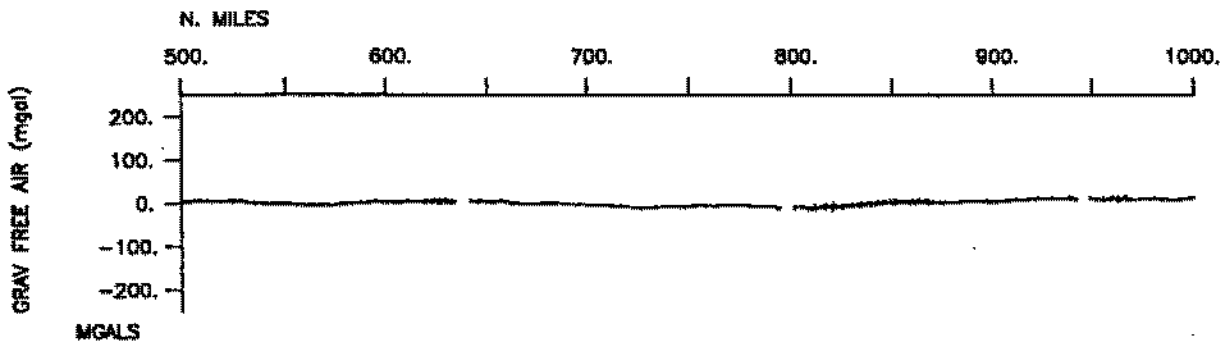
Bathymetry-1005 miles

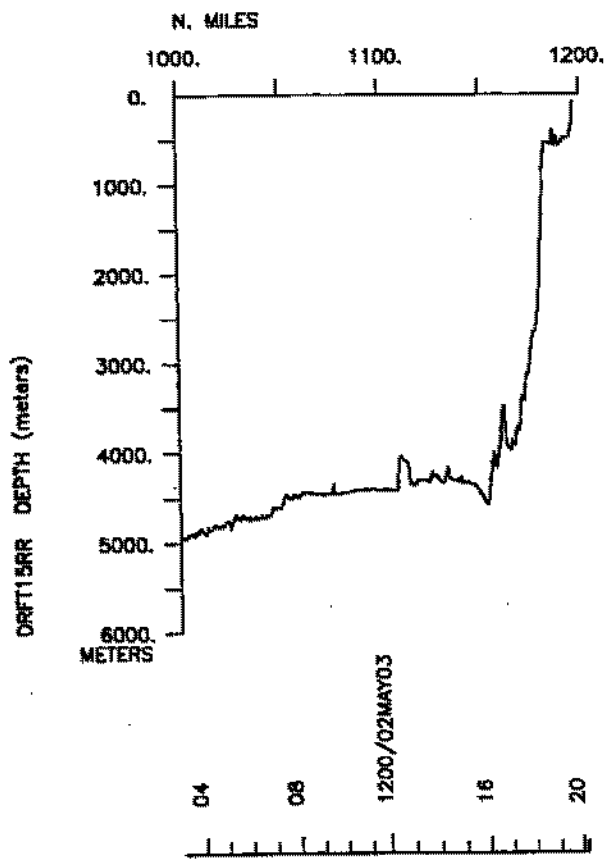
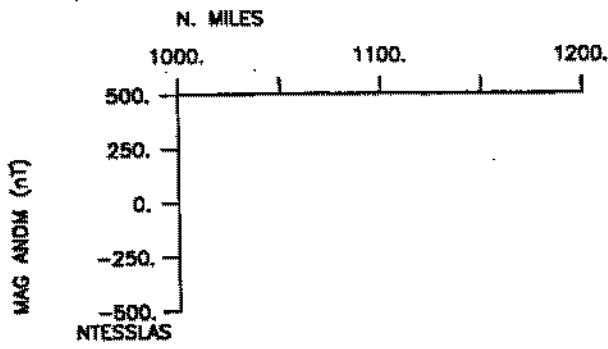
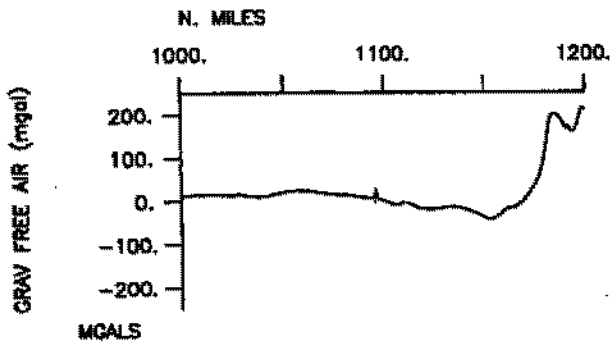
Seismic Reflection-none collected

Multibeam-1005 miles

Gravity-904 miles







S.I.O. Sample Index

Drift Expedition

Leg 14

(DRFT14RR)

R/V Revelle

(Issued August 2002)

PORTS:

Honolulu, Hawaii (24 April 2002)
to
Honolulu, Hawaii (3 May 2002)

Chief Scientist: Peter Worcester
Scripps Institution of Oceanography

The Sample Index is a first level interdisciplinary listing of time, position, sample identification and disposition of all samples, records and measurements collected on this cruise leg. The index data are encoded at sea by the resident marine technician and processed on shore by the S.I.O. Shipboard Technical Support shortly after the completion of the cruise leg.

Positions are interpolated on the basis of sample time by comparison to a single, edited navigation file. Samples beginning at one time and position and ending at another are entered on two consecutive lines. Disposition and sample type are represented by three and four character codes to permit future computer searches on these parameters. (Listings defining these codes are available from the Shipboard Technical Support Group.)

STS Cruise ID# 297

**** Ports ****

```
0200 240402 LGPT B Honolulu, Hawaii 21-18.00N 157-52.00W f DRFT14RR
2000 030502 LGPT E Honolulu, Hawaii 21-18.00N 157-52.00W f DRFT14RR
```

**** Personnel ****

```
# *****NAME***** *****TITLE***** *****AFFILIATION***** **CRID**
#-----
PECS IGPP Worcester,Dr.P. Chief Scientist Scripps Institution DRFT14RR
PECS UWA Dushan,Dr.B. Sr. Oceanographer U. of Washington DRFT14RR
PEVL IGPP Dzieciuch,Dr.M. Volunteer Scripps Institution DRFT14RR
PESP IGPP Dzieciuch,Dr.M.Jr. Academic Spec. Scripps Institution DRFT14RR
PESP UHI Luther,Dr.D. Professor U. of Hawaii DRFT14RR
PESP UCSC Vera,Dr.M. Post Grad. Resear. U.C. Santa Cruz DRFT14RR
PERT STS Comer,R.L. Resident Tech. Scripps Institution DRFT14RR
PECT STS French,B. Computer Tech. Scripps Institution DRFT14RR
PESP IGPP Day,L. Admin. Specialist Scripps Institution DRFT14RR
PESP IGPP Green,L. Sr. Dev. Engineer Scripps Institution DRFT14RR
PESP IGPP Horwitt,D. Programmer Scripps Institution DRFT14RR
PESP WHOI Kemp,J. Sr. Assist. Eng. Woods Hole DRFT14RR
PESP IGPP Norenberg,M. Development tech Scripps Institution DRFT14RR
PESP IGPP Duong,P. Development tech Scripps Institution DRFT14RR
```

**** NOTES ****

```
#An 'X' in the (B)egin/(E)nd column following the sample code indicates no
#sample or data recovered. A 'C' indicates continuation of data collection
#from before the beginning or after the end of a particular leg, (moored
#bottom instruments, for example.) The number appearing in the columns
#between the sample identifier and the disposition code, for many sample
#entries, is the water depth in corrected meters.
```

```
#GMT DDMYY SAMP B SAMPLE DISP p CRUISE
#TIME DATE TZ CODE E IDENTIFIER CODE LATITUDE LONGITUDE c LEG-SHIP
#-----
```

```
**** Underway Data Curator - Shipboard Technical Support Group ext.41899 ****
**** Digital Data Curator - Geological Data Center, S.P. Miller, ext.41898 ****
```

**** Log Books ****

```
0200 240402 0 LBSC B Science log book IGPP 19-57.57N 160-05.89W g DRFT14RR
0050 030502 0 LBSC E Science log book IGPP 18-20.59N 160-22.15W g DRFT14RR
```

**** MultiBeam Data (SIMRAD) ****

```
0200 240402 0 MBSI B SIMRAD multibeam GDC 19-57.57N 160-05.89W g DRFT14RR
2000 030502 0 MBSI E SIMRAD multibeam GDC 21-17.14N 157-52.60W g DRFT14RR
```

**** Digital Gravity ****

```
0200 240402 0 GVDD B Digital gravity GDC 19-57.57N 160-05.89W g DRFT14RR
2000 030502 0 GVDD E Digital gravity GDC 21-17.14N 157-52.60W g DRFT14RR
```

