

*Report and Index of
Underway Marine geophysical Data*

Centennial

Leg 07

(CNTL07RR)

R/V Roger Revelle

(Issued May 2004)

Ports:

San Diego, CA (04-Apr-03)

to

San Diego, CA (24-Apr-03)

Chief Scientist: Elizabeth Venrick

University California, San Diego

evenrick@ucsd.edu

Computer Tech - Barry Quiel

Resident Tech - Gene Pillard

Post-Cruise processing and report preparation by the

Shipboard Technical Support Group,

Scripps Institution of Oceanography

La Jolla, CA 92093-0223

Note: *This is an index of underway geophysical data edited and processed after the completion of the leg and is intended primarily for informal use within the institution. This document is not to be reproduced or distributed outside Scripps without prior approval of the chief scientist or Shipboard Technical Support, Scripps Institution of Oceanography, La Jolla, California 92093-0223*

STS Cruise ID#300

Report and index of Navigation and Underway Geophysical Data

Contents:

Index Chart - give track of cruise leg, dates, ports.

Track Charts - annotated with dates and hour ticks.

Profiles - depth, magnetic and gravity free air anomaly vs. distance.

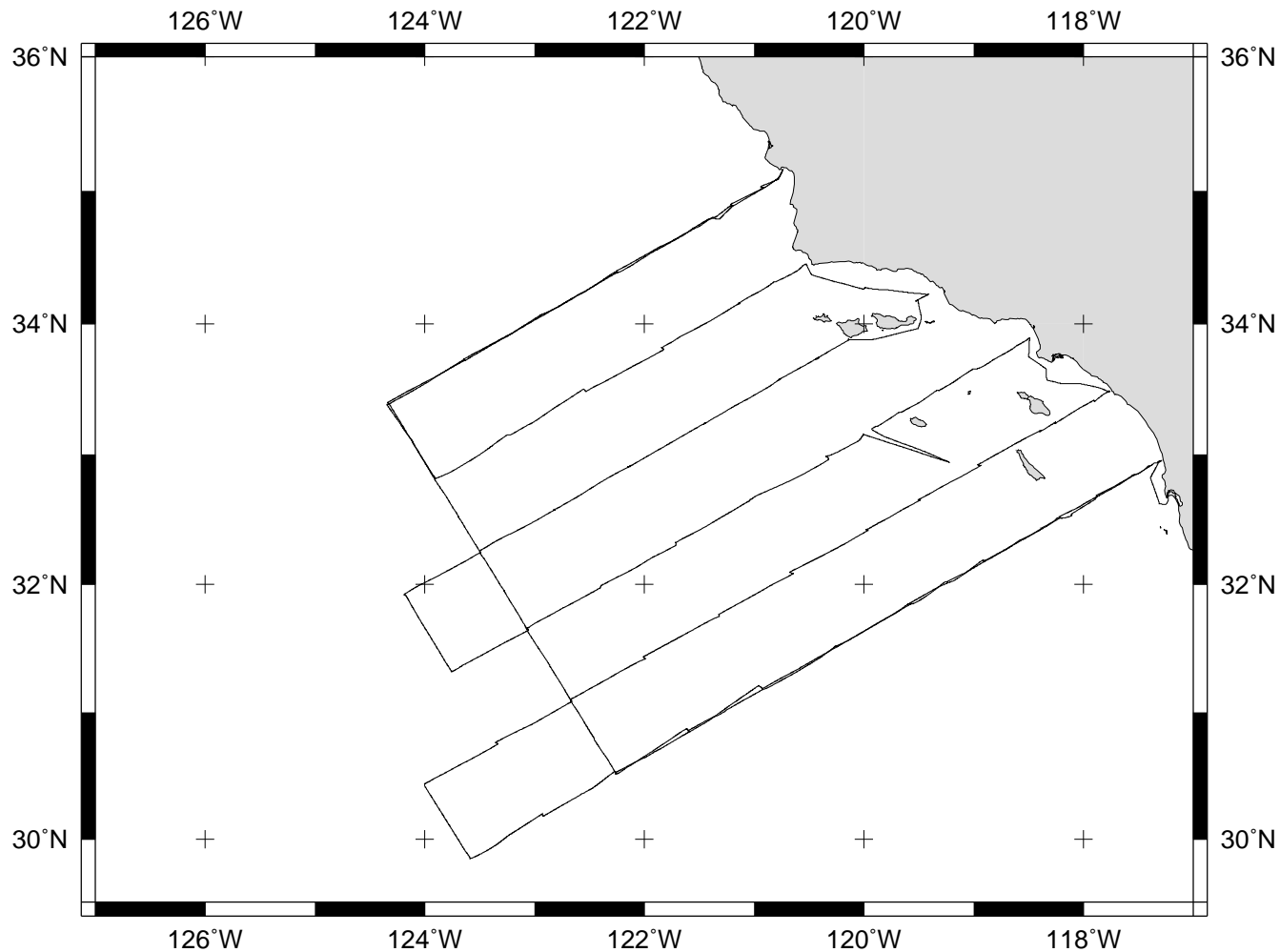
Sample Index - list of begin/end times and positions of all underway records as well as samples and measurements from other disciplines collected on the leg.

Note:

For information on the availability of this current digital data as well as archived digital data contact:

Stephen P. Miller
Geological Data Center
Scripps Institution of Oceanography
La Jolla, California 92093-0220
Phone: (858) 534-1898
Internet email: spmiller@ucsd.edu; or his website: <http://SIOExplorer@ucsd.edu>

Rev 05/2002



CENTENNIAL EXPEDITION LEG 7 (CNTL07RR)

=====

CHIEF SCIENTIST: Elizabeth Venrick, Scripps Institution

PORTS: San Diego - San Diego, California

DATES: 04 - 24 April 2003

SHIP: R/V Revelle

TOTAL MILEAGE OF UNDERWAY DATA COLLECTED

Cruise-2895 miles

Magnetics-none collected

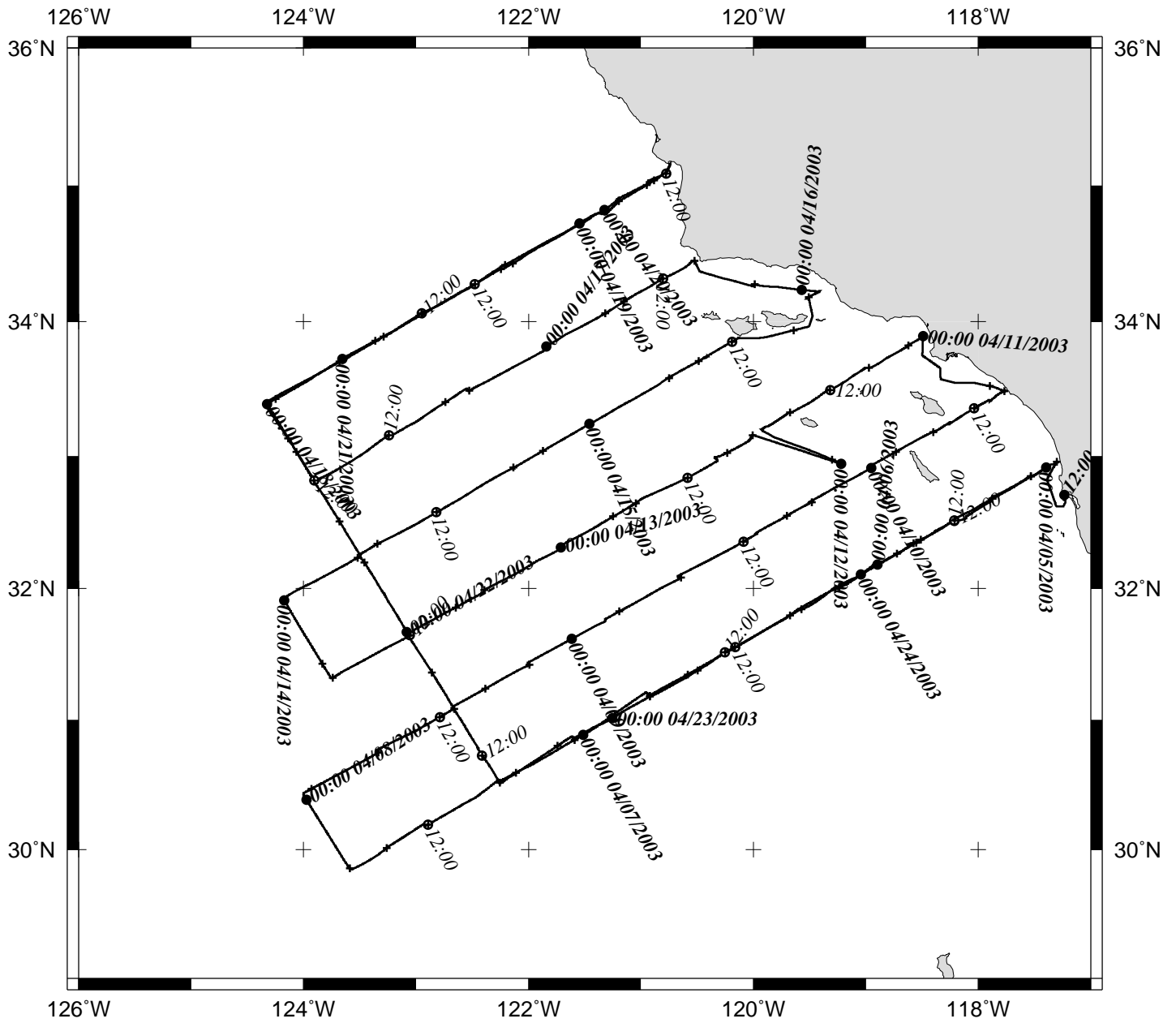
Bathymetry-340 miles

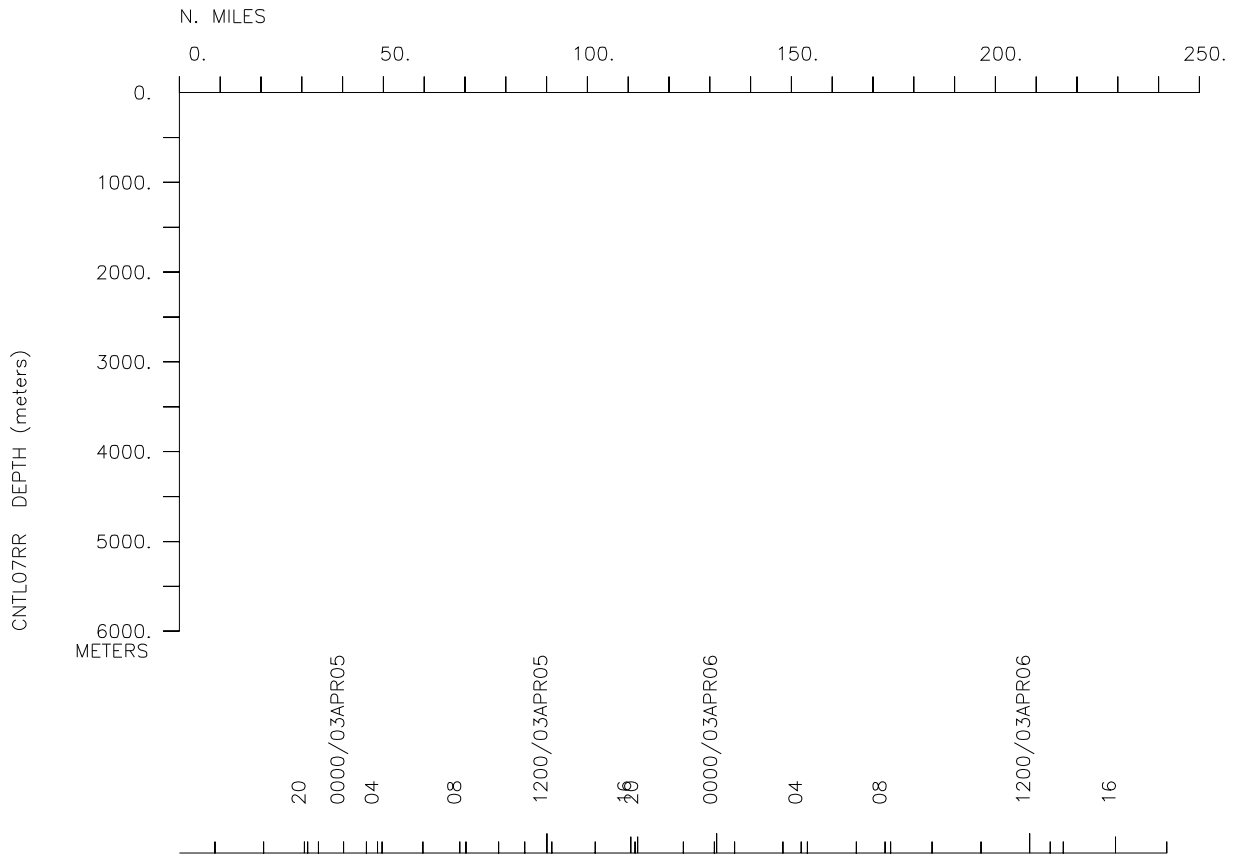
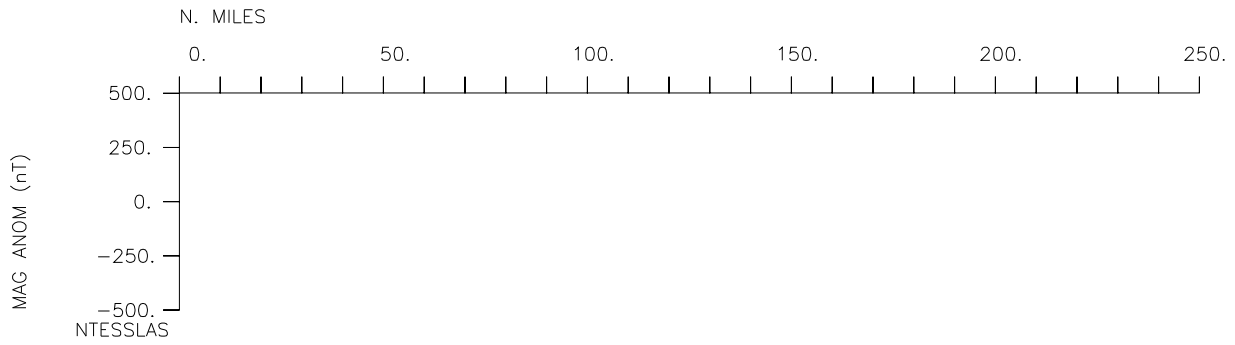
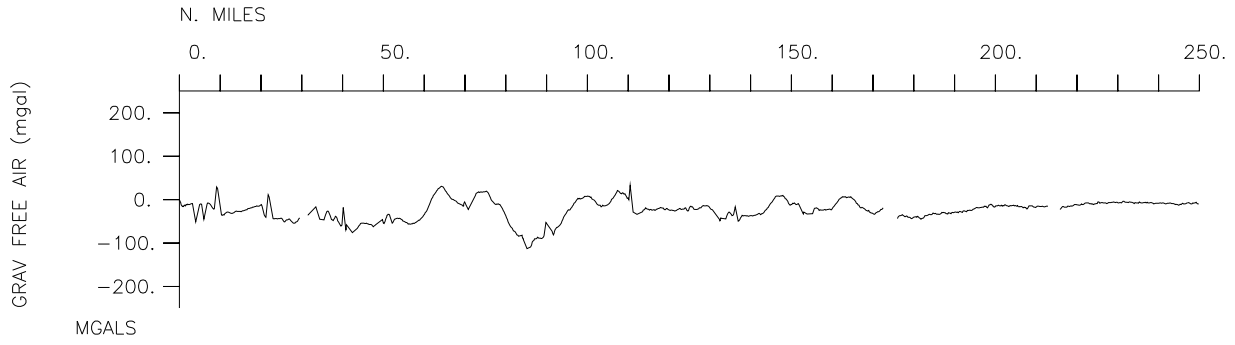
Seismic Reflection-none collected

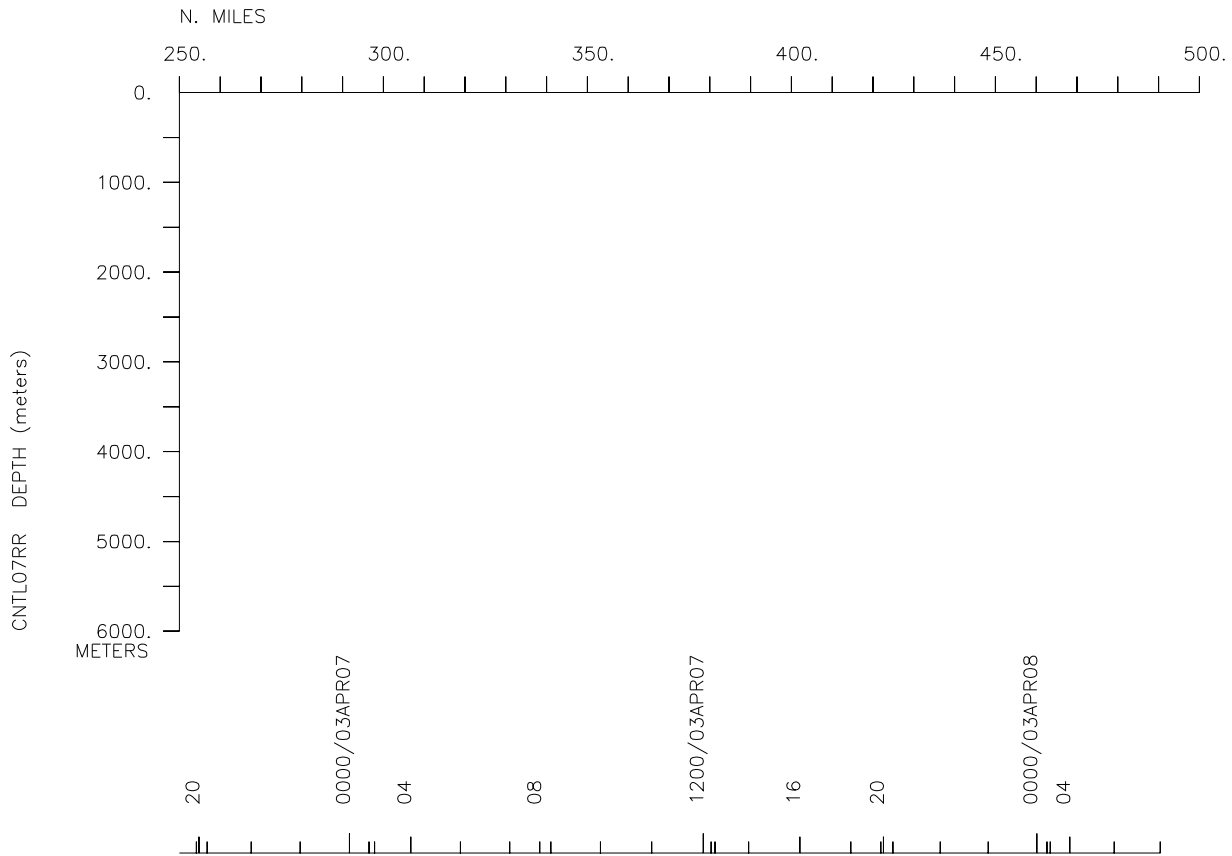
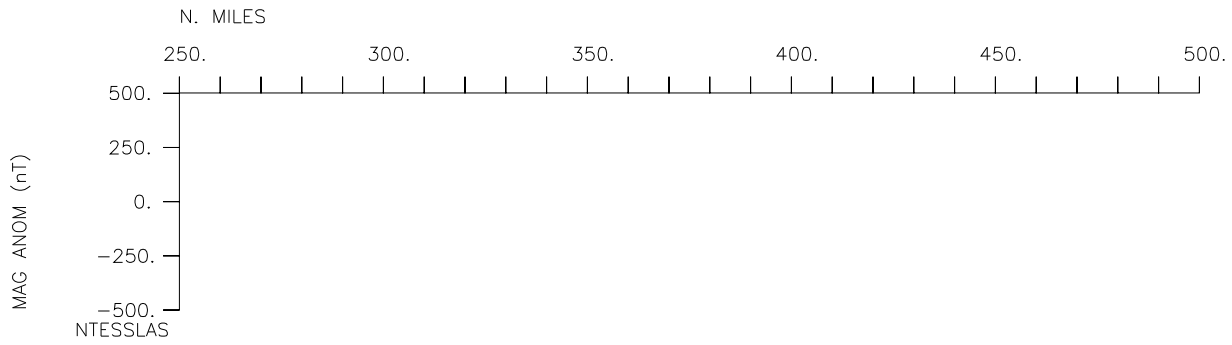
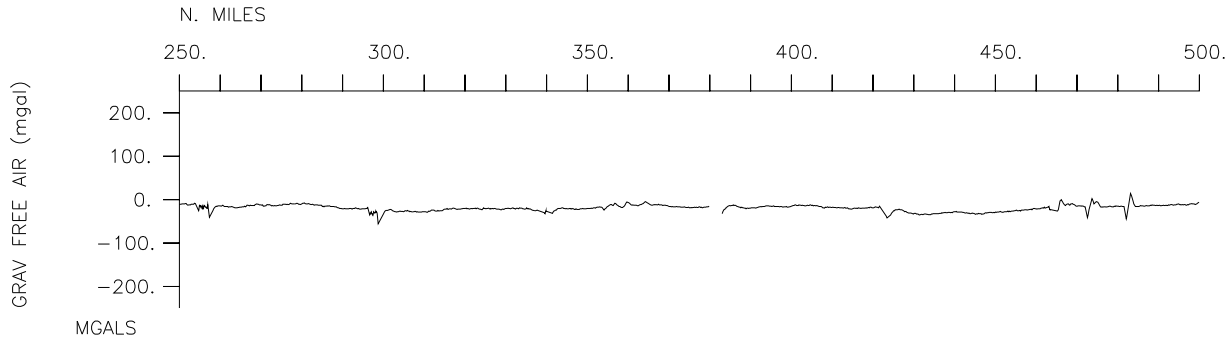
Multibeam-340 miles

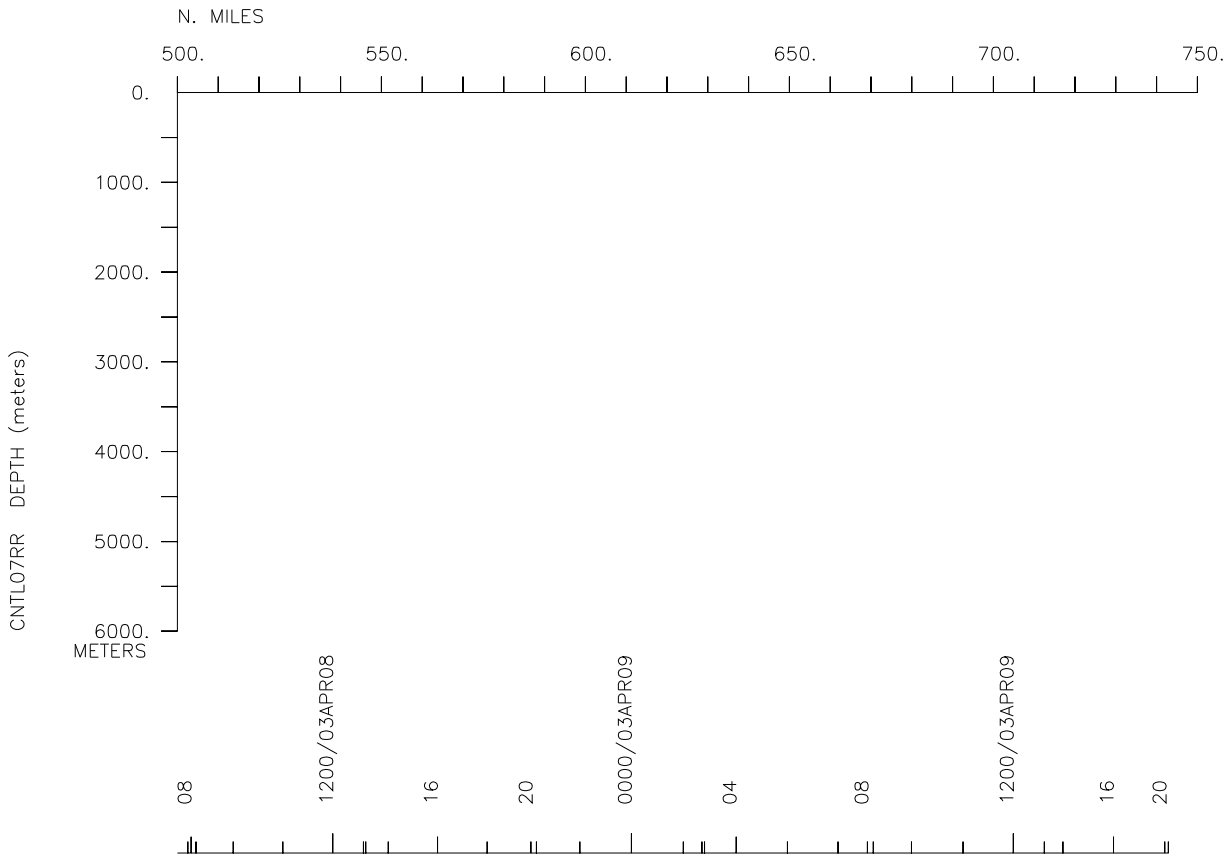
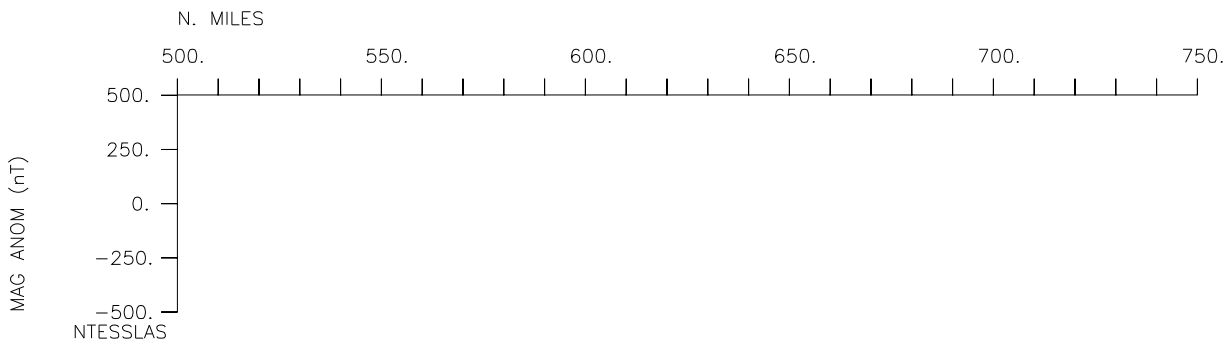
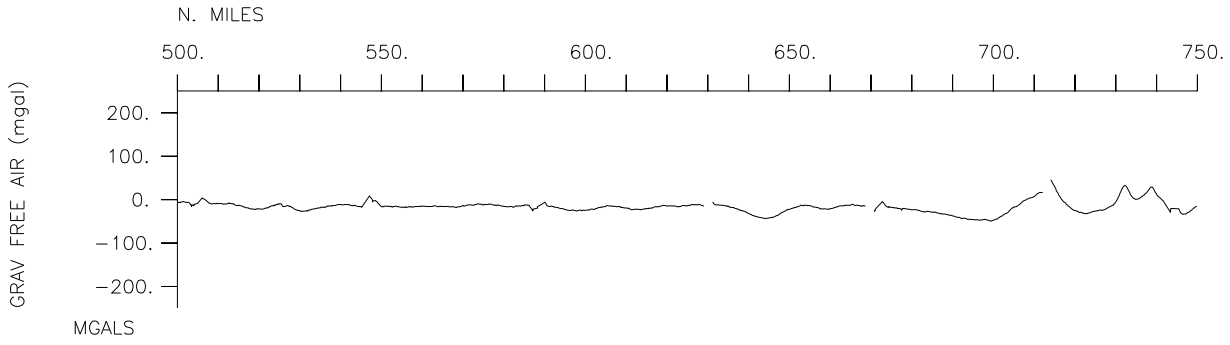
Gravity-2895 miles

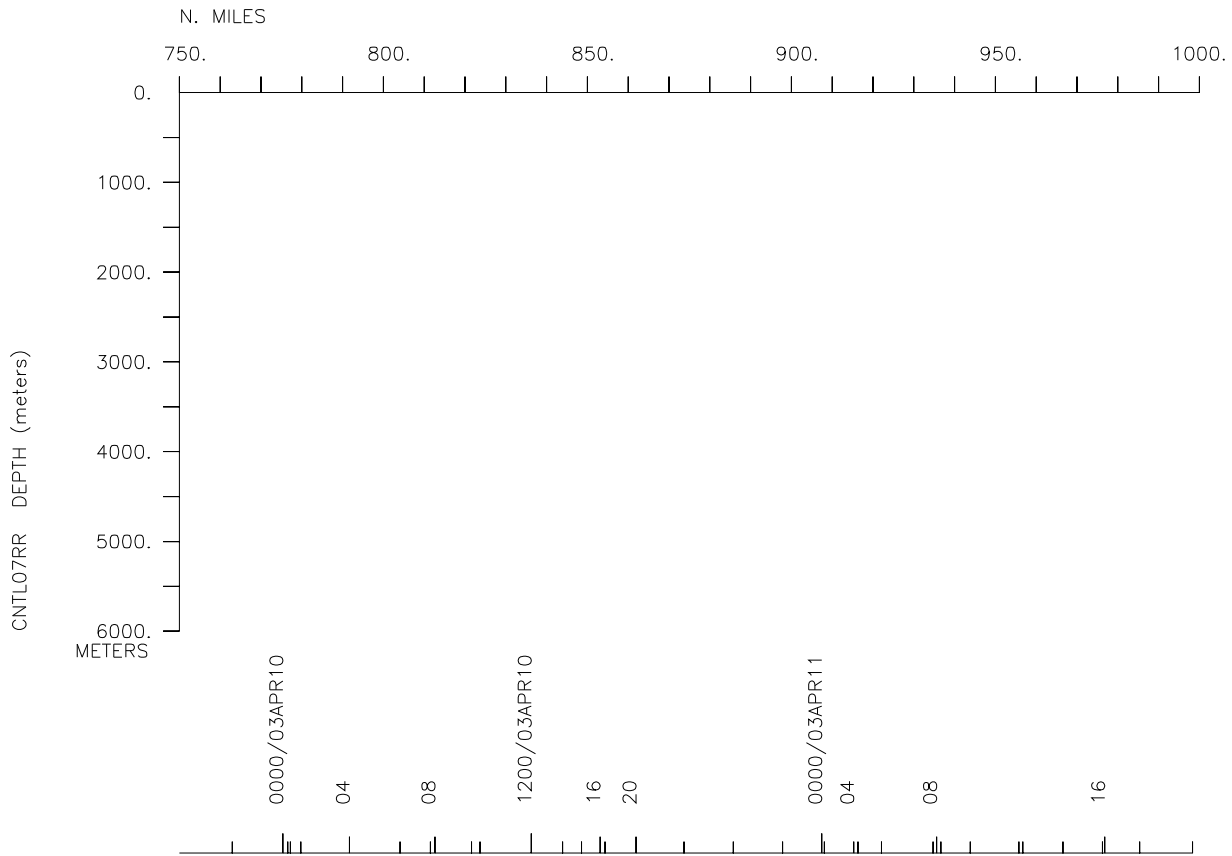
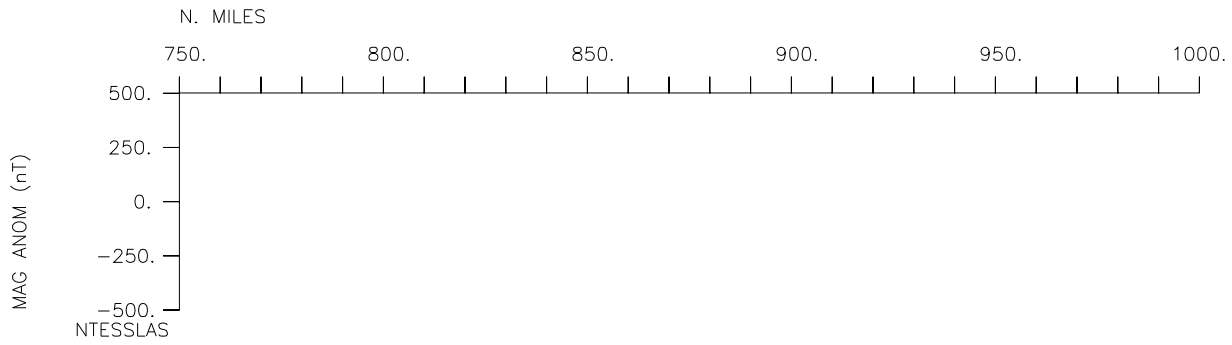
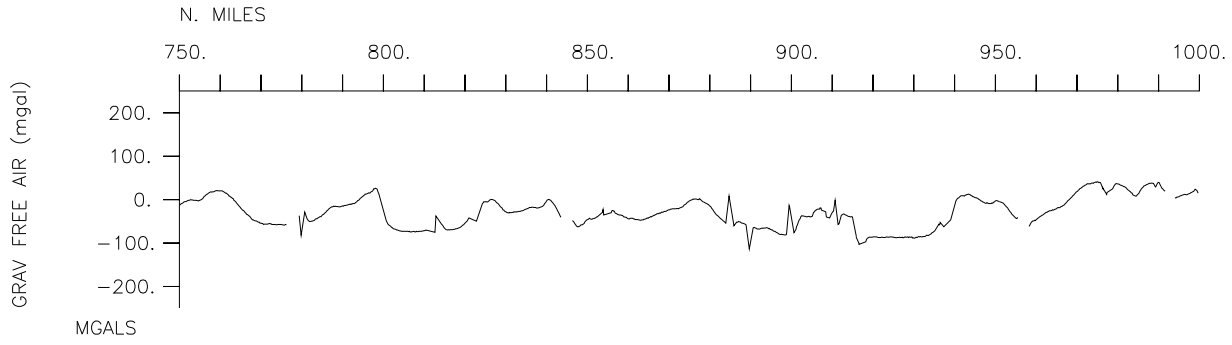
CNTL07RR

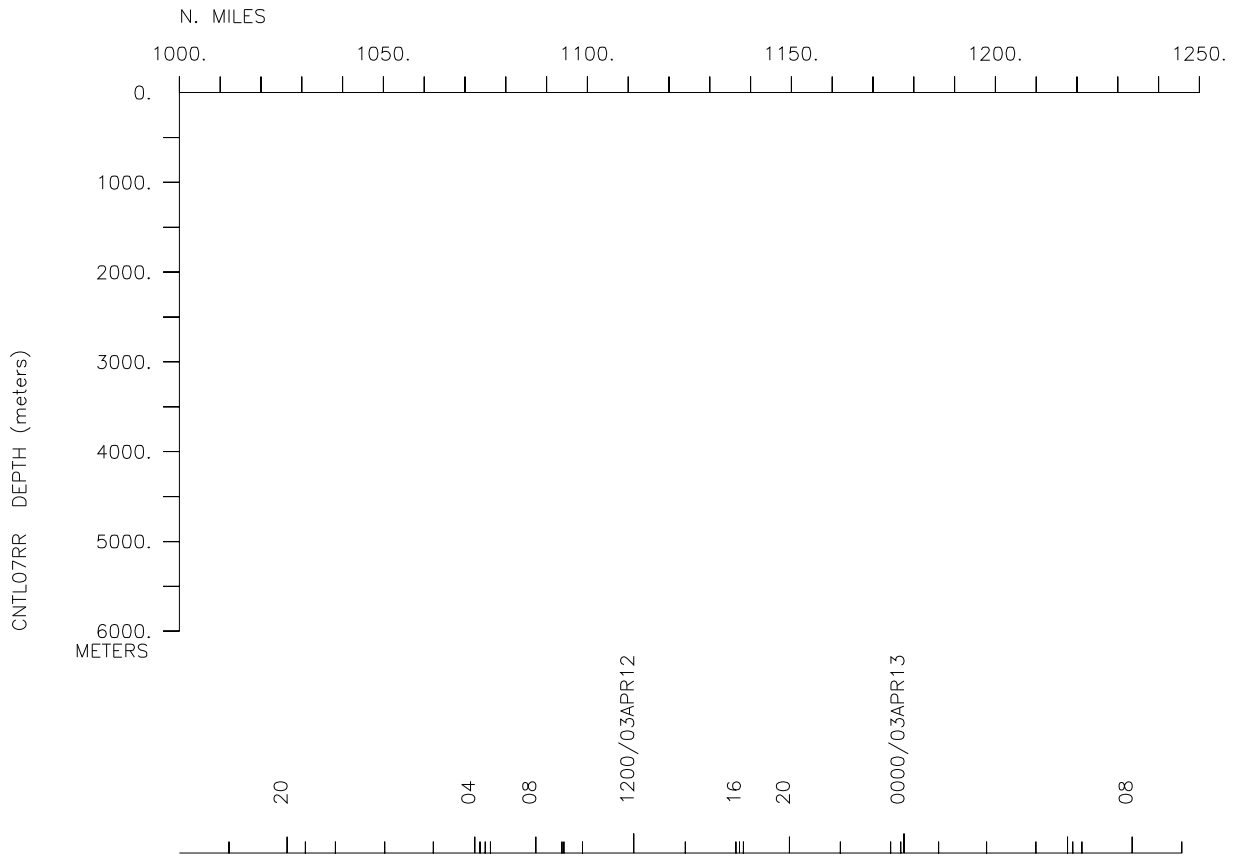
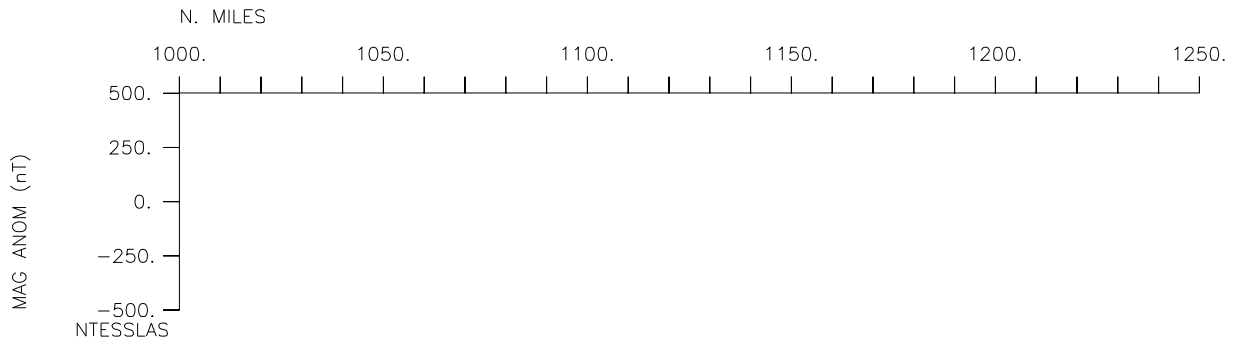
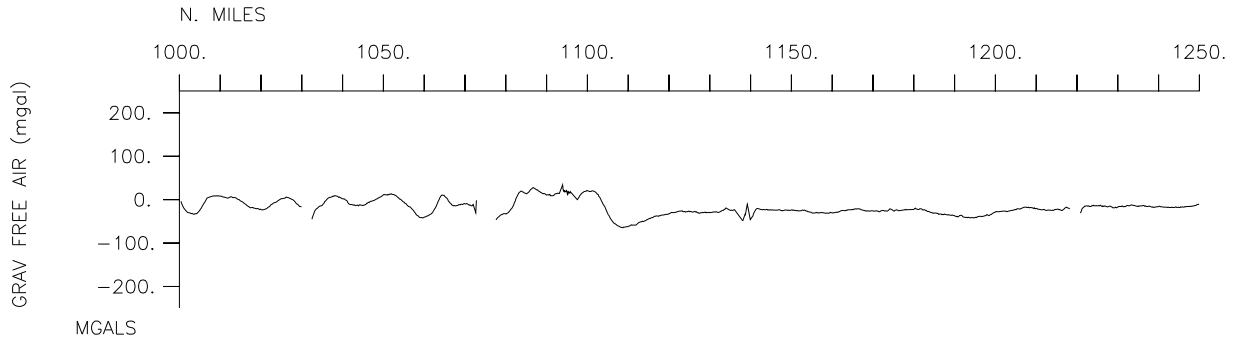


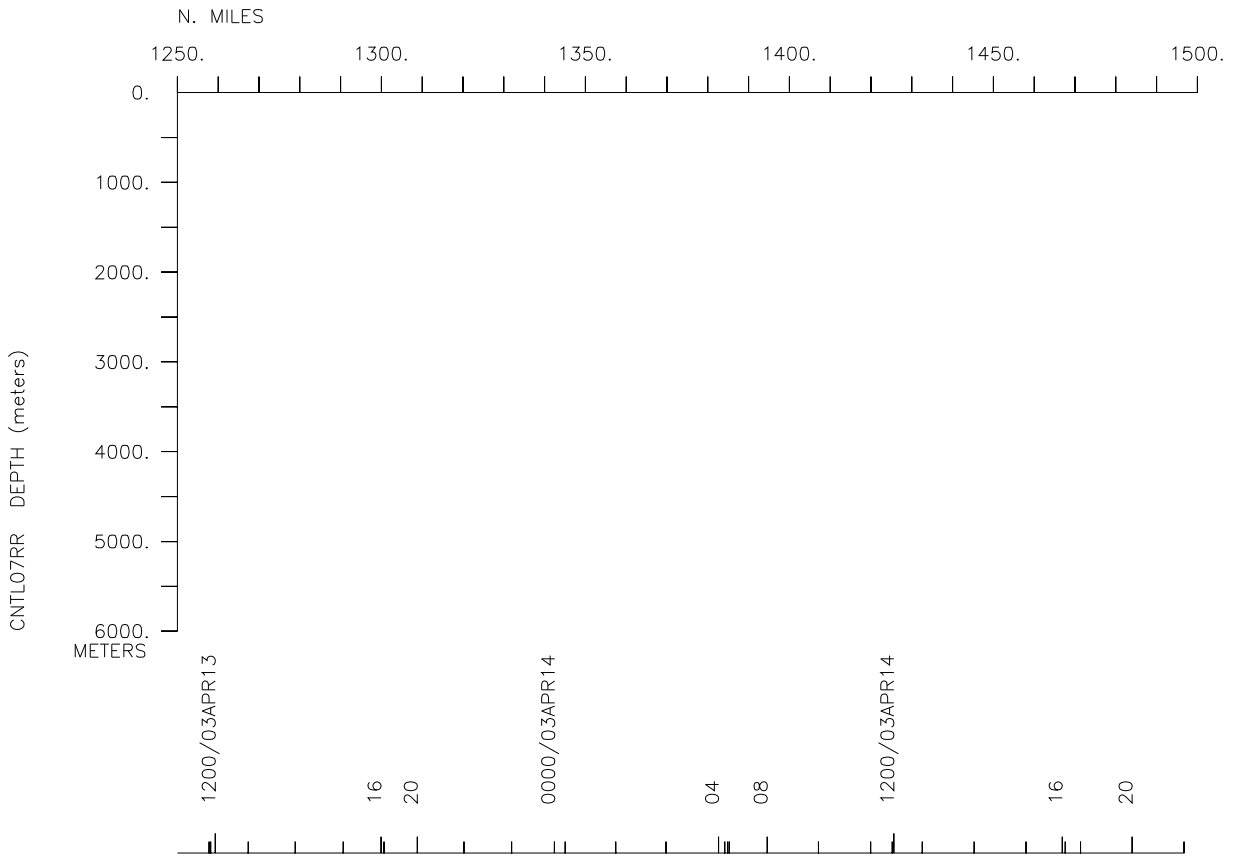
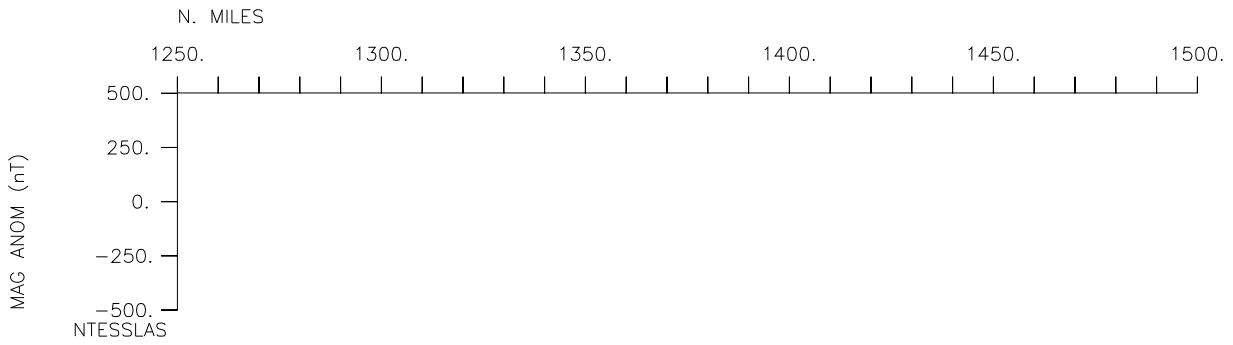
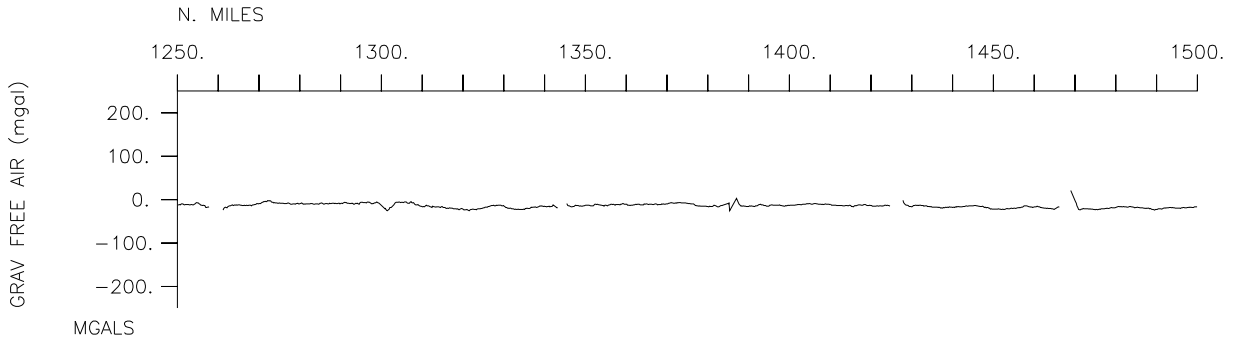


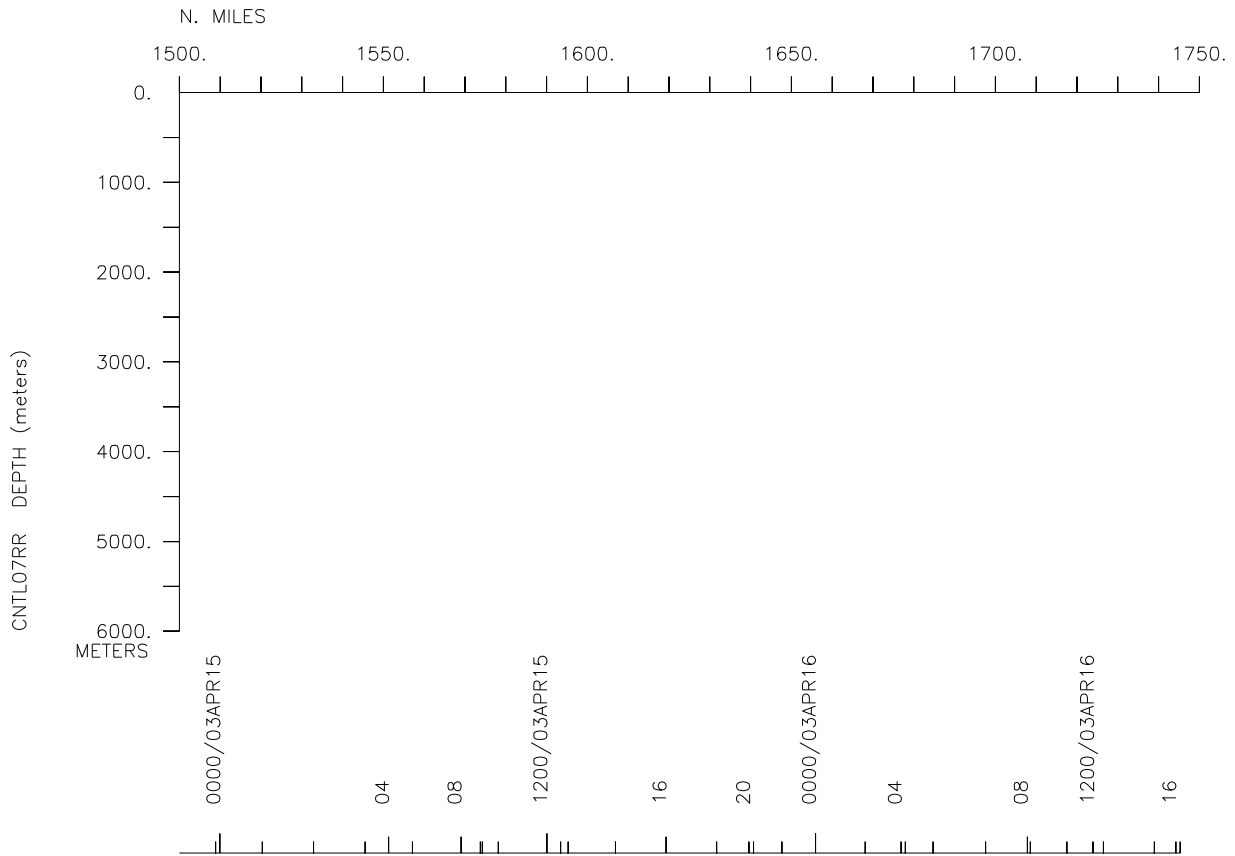
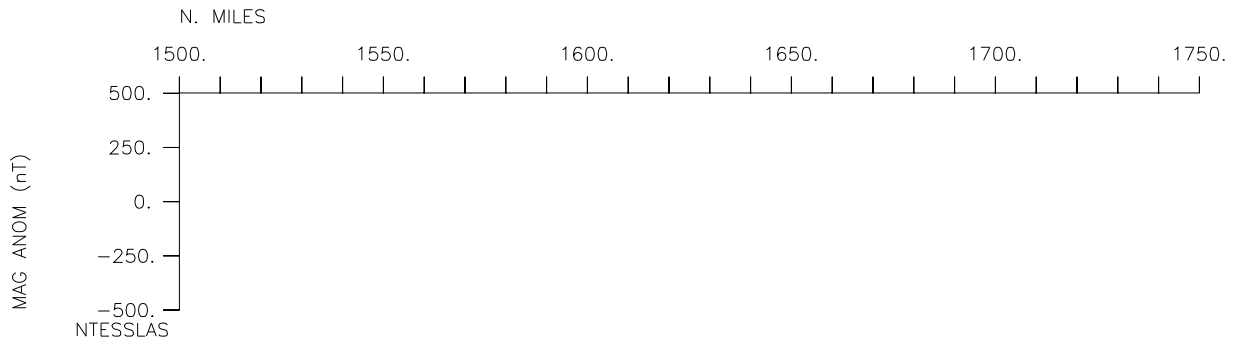
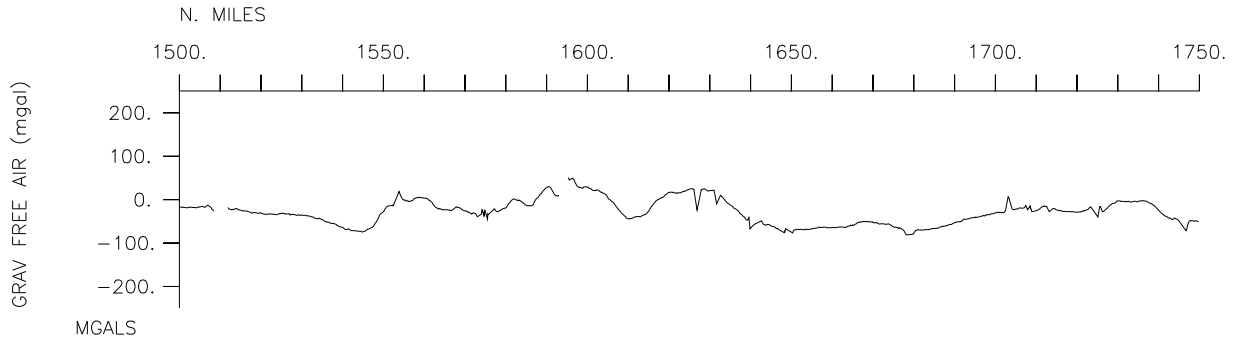


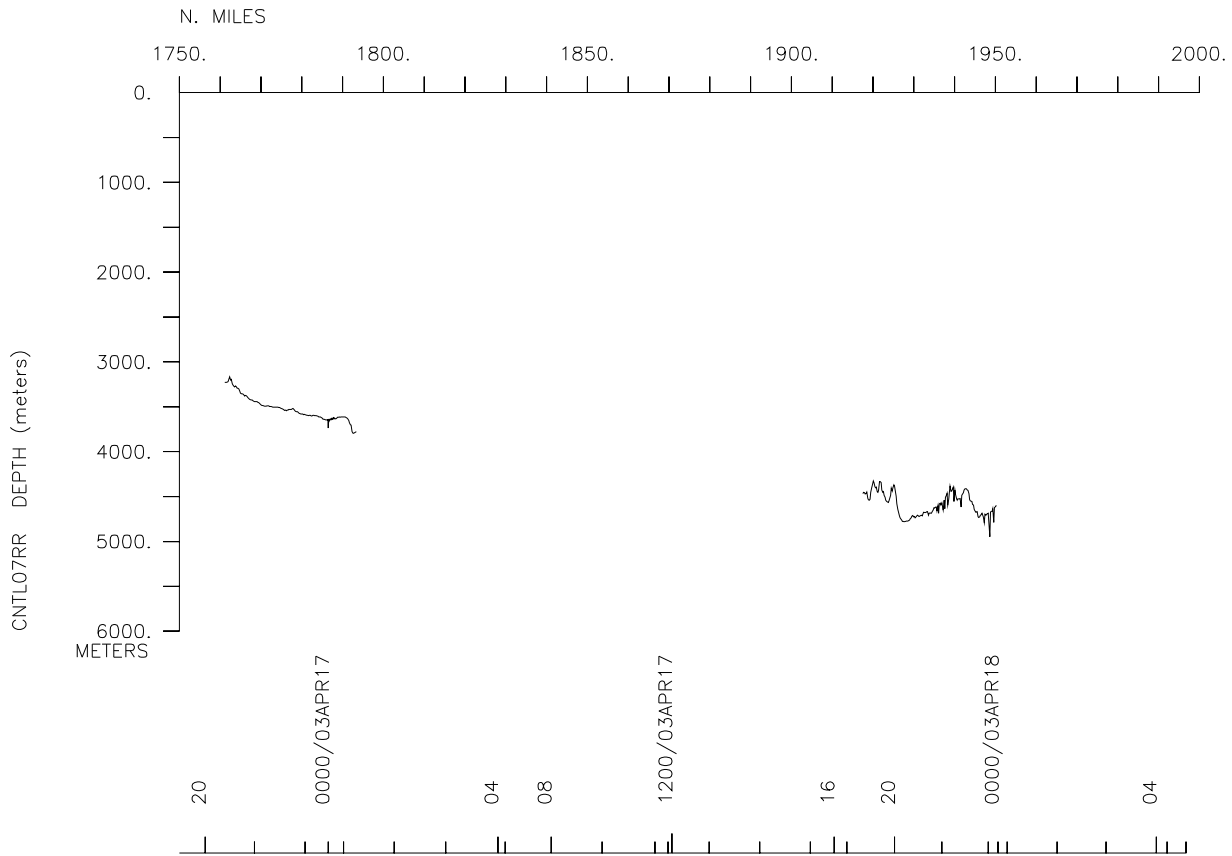
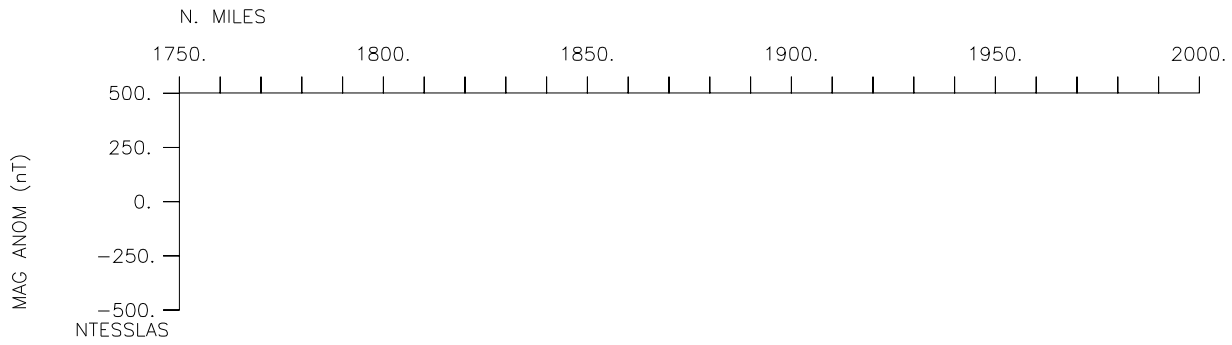
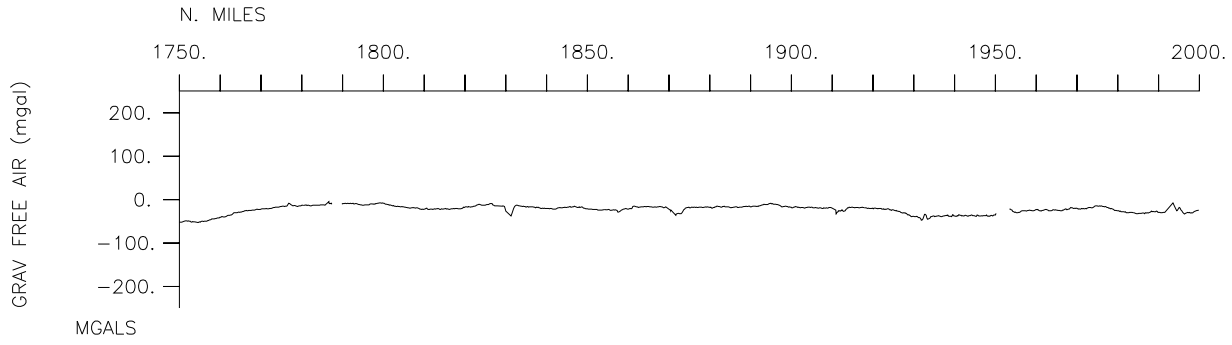


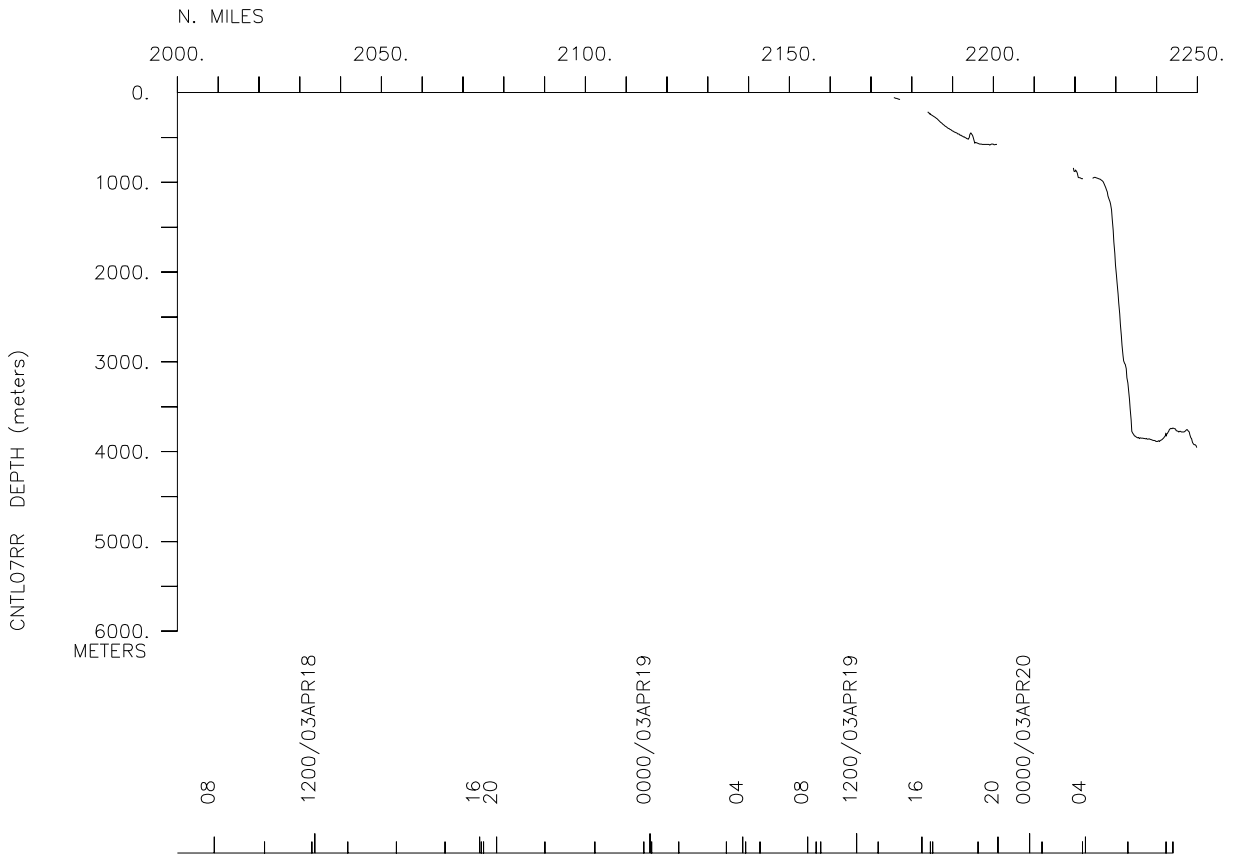
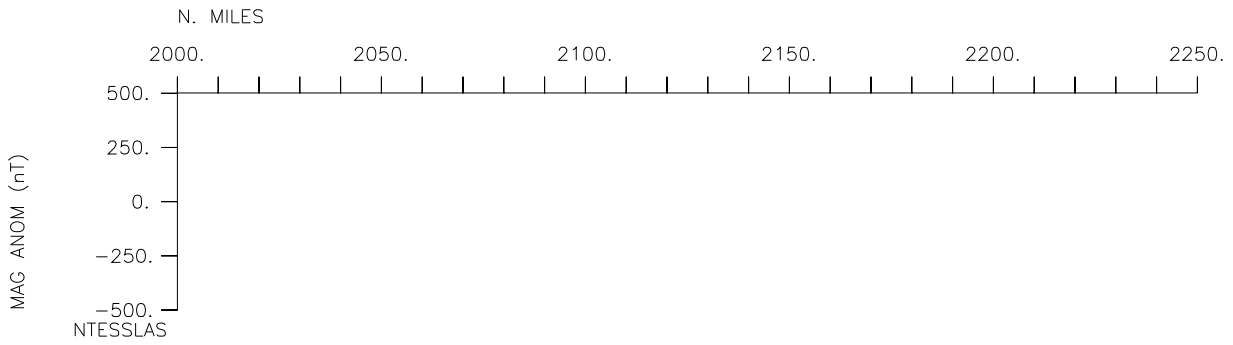
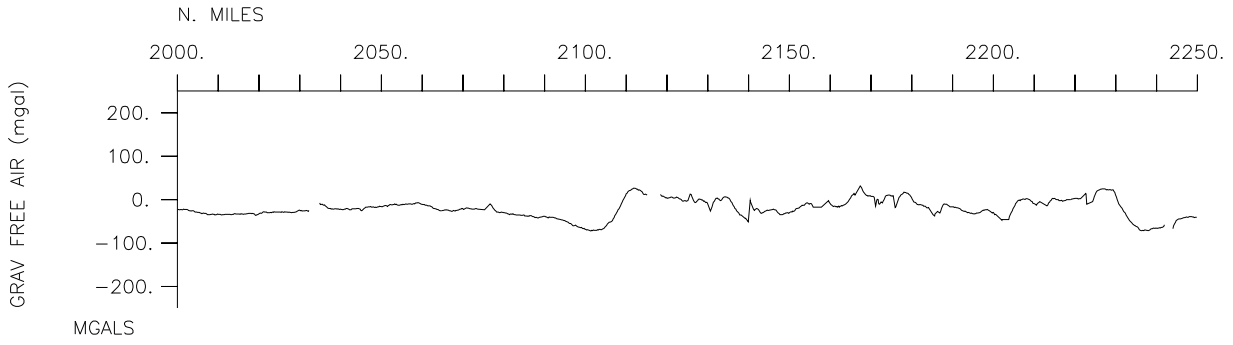


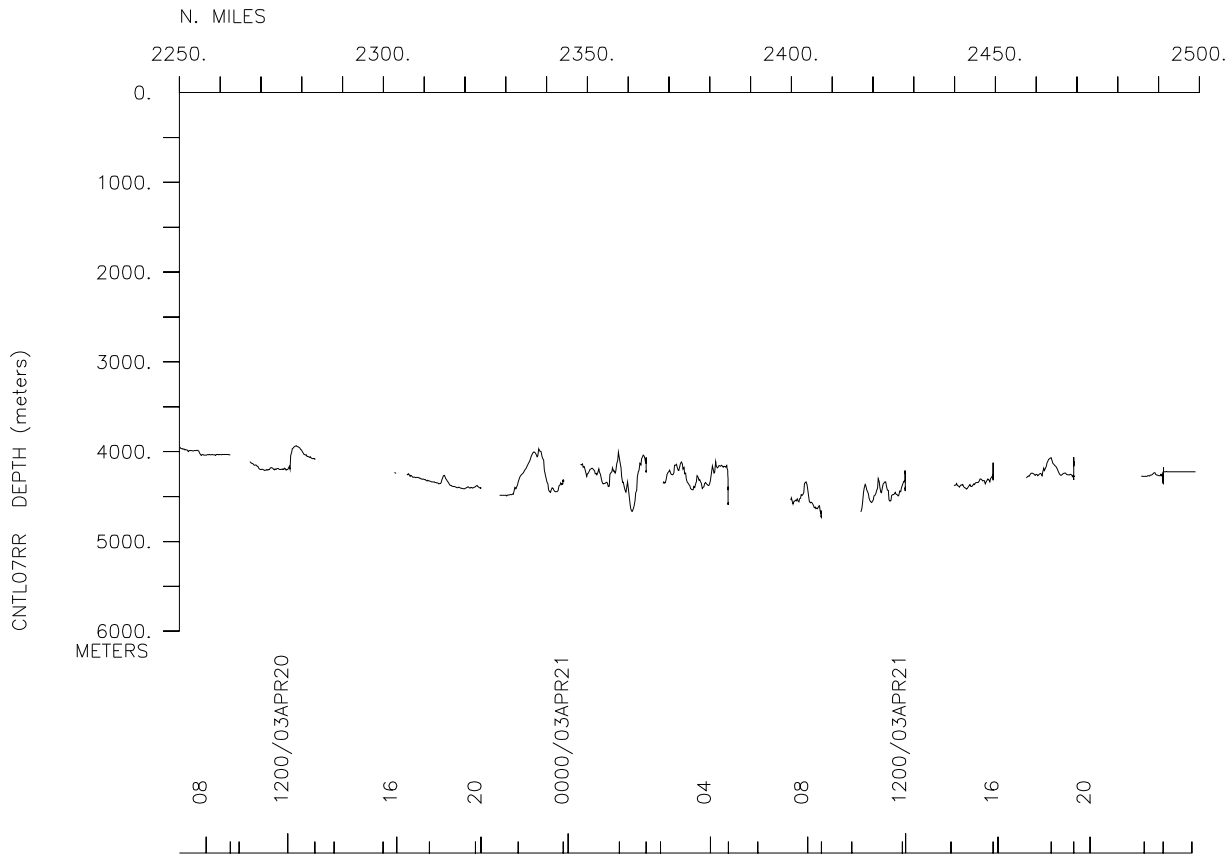
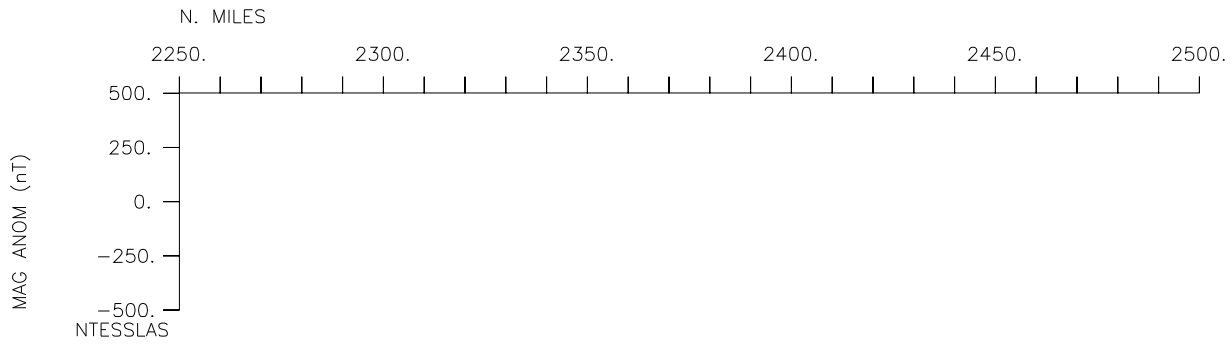
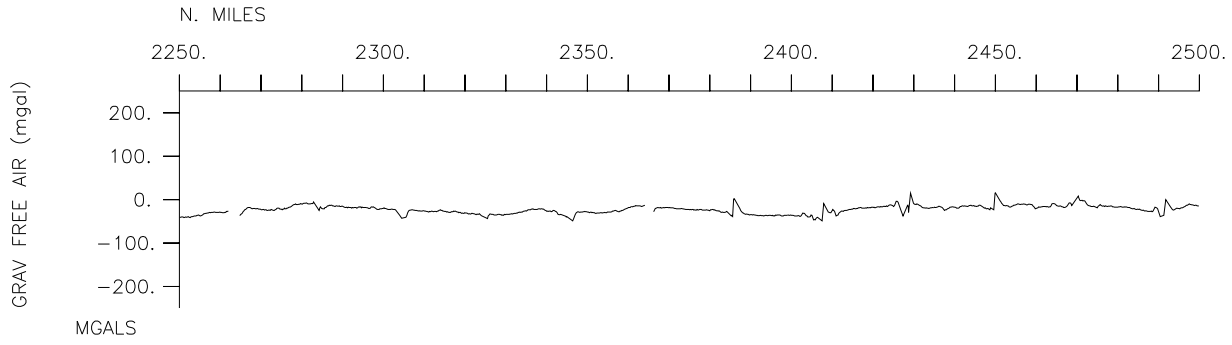


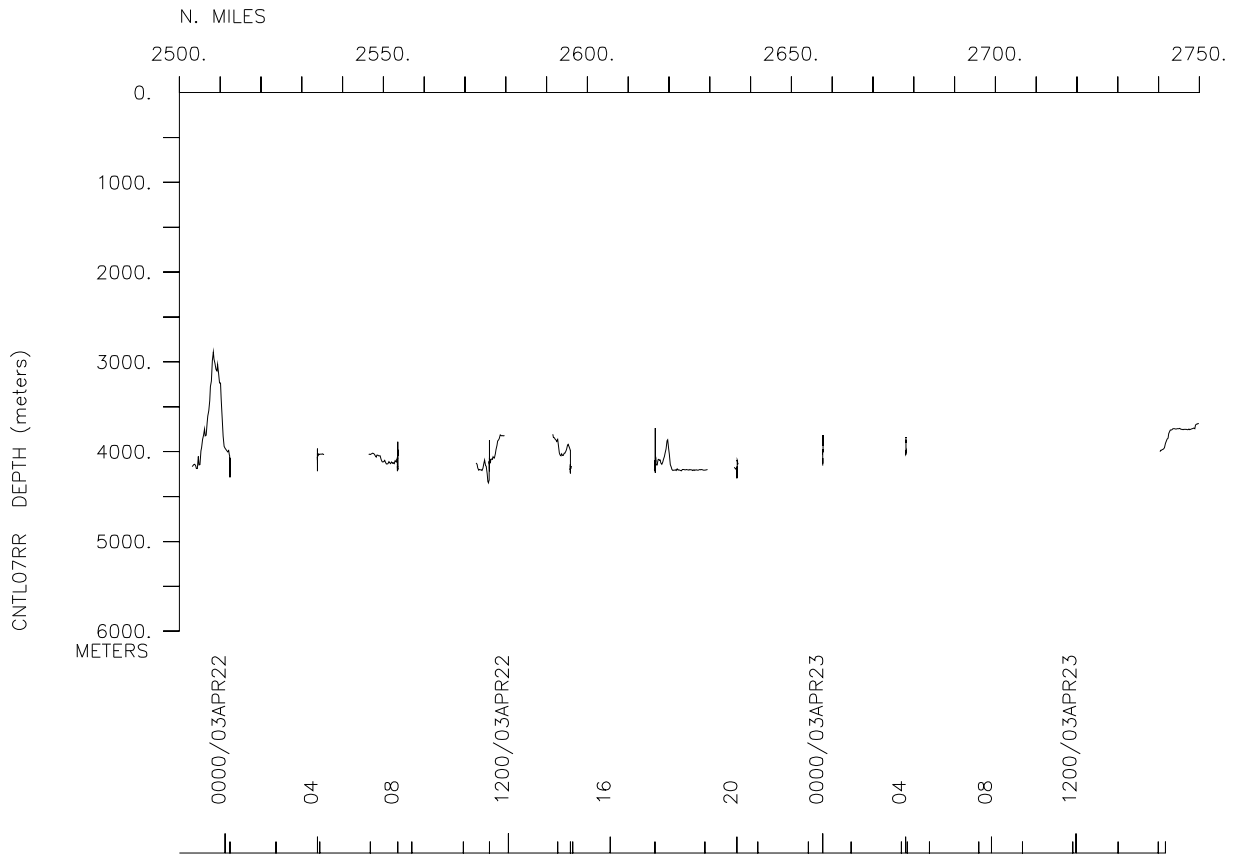
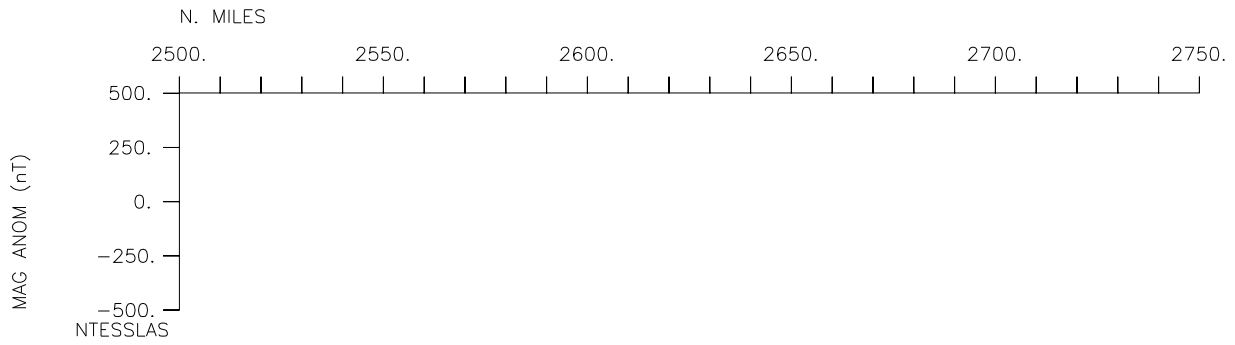
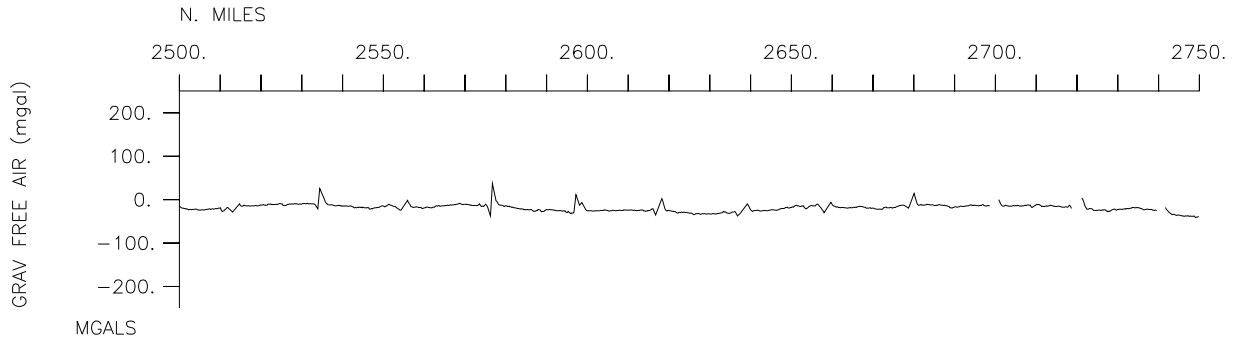


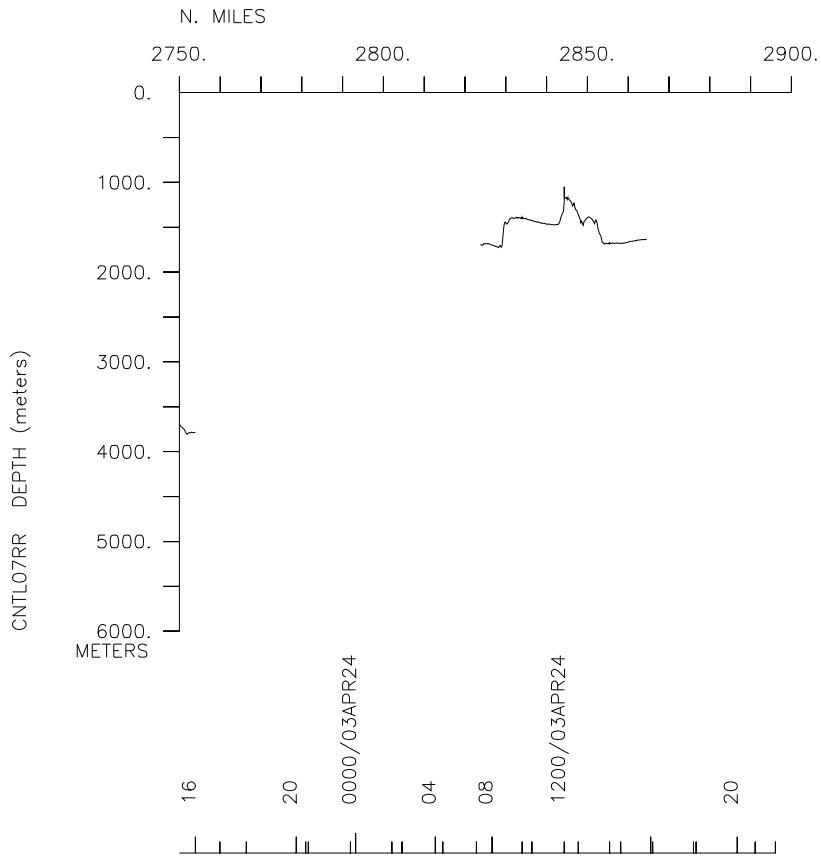
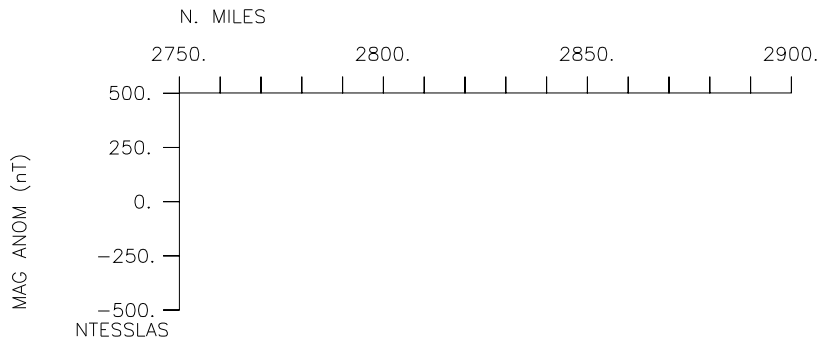
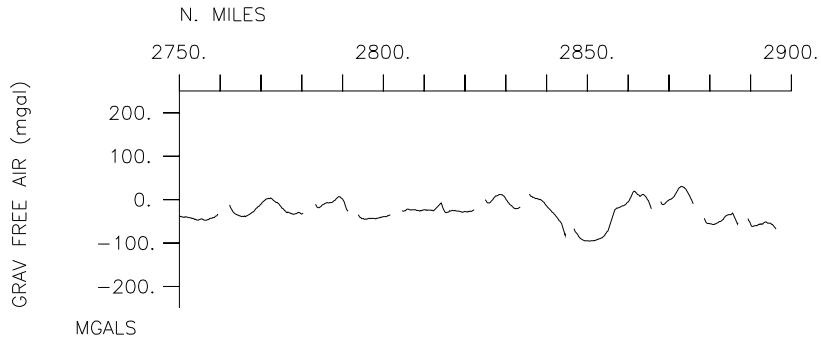












**** Ports ***

1600 040403 LGPT B San Diego, California 32-43.00N 117-11.00W f CNTL07RR
 2355 240403 LGPT E San Diego, California 32-43.00N 117-11.00W f CNTL07RR

**** Personnel ***

#	*****NAME*****	*****TITLE*****	*****AFFILIATION*****	**CRID**
PECS IOD	Venrick, E.	Chief Scientist	Scripps Institution	CNTL07RR
PESP IOD	Goericke, R.	Scientist	Scripps Institution	CNTL07RR
PESP SIO	Neilson, D.	Project Sci.	Scripps Institution	CNTL07RR
PESP GRD	Aluwihare, L.	Scientist	Scripps Institution	CNTL07RR
PESP MBRD	Barbeau, K.	Scientist	Scripps Institution	CNTL07RR
PESP IOD	Chereskin, T.	Scientist	Scripps Institution	CNTL07RR
PESP MEX	Giles, A.	Scientist	Mexico	CNTL07RR
PESP IOD	Ohman, M.	Scientist	Scripps Institution	CNTL07RR
PESP PORD	Rudnik, D.	Scientist	Scripps Institution	CNTL07RR
PESP SIX	Passalacqua, G.	Asst. Scientist	Peru	CNTL07RR
PESP PORD	Klinke, J.	Specialist	Scripps Institution	CNTL07RR
PESP PORD	Regier, L.	Engineer	Scripps Institution	CNTL07RR
PESP IOD	Powell, J.	Technician	Scripps Institution	CNTL07RR
PESP ODF	Schuller, D.	Technician	Scripps Institution	CNTL07RR
PESP SIX	Sheldon, J.	Technician	Cal Fish and Game	CNTL07RR
PESP MBRD	Wang, H.	Technician	Scripps Institution	CNTL07RR
PESP SIX	Brown, A.	Bird Observer	Non-Scripps Employee	CNTL07RR
PECT STS	Davis, G.	Computer tech	Scripps Institution	CNTL07RR
PECT STS	Quiel, B.	Computer tech	Scripps Institution	CNTL07RR
PERT STS	Pillard, G.	Resident tech	Scripps Institution	CNTL07RR
PESP IOD	Wilkinson, J.	Prog/Analyst	Scripps Institution	CNTL07RR
PESP SIO	Becker, S.	Research Asst.	Scripps Institution	CNTL07RR
PESP SIX	Dotson, R.	Research Asst.	Nat.Marine Fisheries	CNTL07RR
PESP SIX	Hays, A.	Research Asst.	Nat.Marine Fisheries	CNTL07RR
PESP IOD	McCann, S.	Research Asst.	Scripps Institution	CNTL07RR
PESP IOD	Wolgast, D.	Research Asst.	Scripps Institution	CNTL07RR
PESP SIX	Nash, M.	Observer	Non-Scripps Employee	CNTL07RR
PESP SIX	Pennycook, J.	Observer	Fresno School Dist.	CNTL07RR
PESP UCSD	Frame, E.	Grad student	Scripps Institution	CNTL07RR
PESP UCSD	deJesus, R.	Grad student	Scripps Institution	CNTL07RR
PESP UCSD	Glaser, S.	Grad student	Scripps Institution	CNTL07RR
PESP UCSD	Hodges, B.	Grad student	Scripps Institution	CNTL07RR
PESP UCSD	Hsieh, C.	Grad student	Scripps Institution	CNTL07RR
PESP UCSD	King, A.	Grad student	Scripps Institution	CNTL07RR
PESP SIX	Mendez, J.	Grad student	Cal Tech	CNTL07RR
PESP JPN	Mizobata, K.	Grad student	Japan	CNTL07RR
PEST SIO	Schwalbach, M.	Grad student	Scripps Institutione	CNTL07RR

**** NOTES ***

#An 'X' in the (B)egin/(E)nd column following the sample code indicates no
 #sample or data recovered. A 'C' indicates continuation of data collection
 #from before the beginning or after the end of a particular leg, (moored
 #bottom instruments, for example.) The number appearing in the columns
 #between the sample identifier and the disposition code, for many sample
 #entries, is the water depth in corrected meters.

#GMT	DDMMYY	SAMP	B	SAMPLE	DISP				p	CRUISE
#TIME	DATE	TZ	CODE	E IDENTIFIER	CODE	LATITUDE	LONGITUDE		c	LEG-SHIP
#-----	---	-----	---	-----	---	-----	-----	-----	---	-----

**** Underway Data Curator - Shipboard Technical Support Group ext.41899 ****
 **** Digital Data Curator - Geological Data Center, S.P. Miller, ext.41898 ****

**** MultiBeam Data (SIMRAD) ****

2024	160403	0	MBSI	B Simrad	EM120	GDC	34-01.22N	121-24.01W	g	CNTL07RR
2229	240403	0	MBSI	E Simrad	EM120	GDC	32-54.79N	117-23.68W	g	CNTL07RR

**** Digital Gravity ****

0217	040403	0	GVDD	B digital	gravity	GDC	32-42.40N	117-14.18W	g	CNTL07RR
2350	240403	0	GVDD	E digital	gravity	GDC	32-54.62N	117-24.17W	g	CNTL07RR

**** Integrated Meteorological Acquisition System ****

1600	040403	0	IMET	B weather	measurements	GDC	32-42.40N	117-14.18W	g	CNTL07RR
2355	240403	0	IMET	E weather	measurements	GDC	32-54.60N	117-24.30W	g	CNTL07RR

**** Acoustic Doppler Current Profiler ****

1600	040403	0	ADCP	B current	measurements	GDC	32-42.40N	117-14.18W	g	CNTL07RR
2355	240403	0	ADCP	E current	measurements	GDC	32-54.60N	117-24.30W	g	CNTL07RR

**** Secchi Disks ****

1856	040403	0	SECD	B Secchi	93/26.7	IOD	32-57.42N	117-18.31W	g	CNTL07RR
1903	040403	0	SECD	E Secchi	93/26.7	IOD	32-57.40N	117-18.29W	g	CNTL07RR
1725	050403	0	SECD	B Secchi	93/45	IOD	32-20.57N	118-34.41W	g	CNTL07RR
1730	050403	0	SECD	E Secchi	93/45	IOD	32-20.58N	118-34.40W	g	CNTL07RR
2311	050403	0	SECD	B Secchi	disk 93/50	IOD	32-10.79N	118-53.59W	g	CNTL07RR
2316	050403	0	SECD	E Secchi	disk 93/50	IOD	32-10.79N	118-53.59W	g	CNTL07RR
1804	060403	0	SECD	B Secchi	93/80	IOD	31-10.82N	120-55.20W	g	CNTL07RR
1809	060403	0	SECD	E Secchi	93/80	IOD	31-10.82N	120-55.18W	g	CNTL07RR
1807	070403	0	SECD	B Secchi	93/120	IOD	29-50.84N	123-35.18W	g	CNTL07RR
0123	080403	0	SECD	E Secchi	93/120	24M IOD	30-25.09N	123-59.98W	g	CNTL07RR
1755	080403	0	SECD	B Secchi	90/90	IOD	31-25.12N	121-59.39W	g	CNTL07RR
1804	080403	0	SECD	E Secchi	90/90	IOD	31-25.12N	121-59.40W	g	CNTL07RR
1734	090403	0	SECD	B Secchi	90/533	IOD	32-39.12N	119-28.91W	g	CNTL07RR
1737	090403	0	SECD	E Secchi	90/533	IOD	32-39.12N	119-28.91W	g	CNTL07RR
0108	100403	0	SECD	B Secchi	90/45	IOD	32-55.10N	118-56.06W	g	CNTL07RR
0111	100403	0	SECD	E Secchi	90/45	IOD	32-55.10N	118-56.06W	g	CNTL07RR

#GMT #TIME #-----	DDMMYY DATE -----	SAMP TZ	B CODE	SAMPLE E IDENTIFIER	DISP CODE	LATITUDE	LONGITUDE	p c	CRUISE LEG-SHIP
1822	100403	0	SECD	B Secchi 90/28	IOD	33-29.01N	117-45.55W	g	CNTL07RR
1825	100403	0	SECD	E Secchi 90/28	IOD	33-29.01N	117-45.55W	g	CNTL07RR
0119	110403	0	SECD	B Secchi 87/33	IOD	33-53.45N	118-29.40W	g	CNTL07RR
0125	110403	0	SECD	E Secchi 90/28	IOD	33-53.45N	118-29.40W	g	CNTL07RR
1735	120403	0	SECD	B Secchi 87/70	IOD	32-38.67N	121-02.67W	g	CNTL07RR
1739	120403	0	SECD	E Secchi 87/70	IOD	32-38.67N	121-02.67W	g	CNTL07RR
2320	120403	0	SECD	B Secchi 87/80	IOD	32-19.40N	121-42.90W	g	CNTL07RR
2324	120403	0	SECD	E Secchi 87/80	IOD	32-19.41N	121-42.90W	g	CNTL07RR
1723	130403	0	SECD	B Secchi 87/110	IOD	31-19.04N	123-45.20W	g	CNTL07RR
2358	130403	0	SECD	E Secchi 83/110	33M IOD	31-54.72N	124-10.22W	g	CNTL07RR
1725	140403	0	SECD	B Secchi 83/80	IOD	32-54.63N	122-08.83W	g	CNTL07RR
1732	140403	0	SECD	E Secchi 83/80	IOD	32-54.64N	122-08.80W	g	CNTL07RR
2304	140403	0	SECD	B Secchi 83/70	IOD	33-14.71N	121-26.59W	g	CNTL07RR
2307	140403	0	SECD	E Secchi 83/70	IOD	33-14.71N	121-26.59W	g	CNTL07RR
1809	150403	0	SECD	B Secchi 83/42	IOD	34-10.69N	119-30.51W	g	CNTL07RR
1814	150403	0	SECD	E Secchi 83/42	IOD	34-10.69N	119-30.52W	g	CNTL07RR
2238	150403	0	SECD	B Secchi 83/40.6	IOD	34-13.50N	119-24.71W	g	CNTL07RR
2240	150403	0	SECD	E Secchi 83/40.6	IOD	34-13.50N	119-24.71W	g	CNTL07RR
1726	160403	0	SECD	B Secchi 80/60	IOD	34-09.31N	121-07.82W	g	CNTL07RR
1729	160403	0	SECD	E Secchi 80/60	IOD	34-09.31N	121-07.82W	g	CNTL07RR
2340	160403	0	SECD	B Secchi 80/70	IOD	33-48.99N	121-50.62W	g	CNTL07RR
2344	160403	0	SECD	E Secchi 80/70	IOD	33-48.99N	121-50.62W	g	CNTL07RR
1710	170403	0	SECD	B Secchi 80/100	IOD	32-49.40N	123-54.83W	g	CNTL07RR
1717	170403	0	SECD	E Secchi 80/100	IOD	32-49.40N	123-54.83W	g	CNTL07RR
2335	170403	0	SECD	B Secchi 77/100	IOD	33-23.30N	124-19.40W	g	CNTL07RR
2339	170403	0	SECD	E Secchi 77/100	IOD	33-23.30N	124-19.40W	g	CNTL07RR
1802	180403	0	SECD	B Secchi 77/70	IOD	34-23.67N	122-15.56W	g	CNTL07RR
1808	180403	0	SECD	E Secchi 77/70	IOD	34-23.67N	122-15.56W	g	CNTL07RR
0022	190403	0	SECD	B Secchi 77/60	IOD	34-43.25N	121-32.93W	g	CNTL07RR
0026	190403	0	SECD	E Secchi 77/60	IOD	34-43.25N	121-32.93W	g	CNTL07RR

#GMT	DDMMYY	SAMP	B	SAMPLE	DISP				p	CRUISE
#TIME	DATE	TZ	CODE	E IDENTIFIER	CODE	LATITUDE	LONGITUDE		c	LEG-SHIP
#-----	---	-----	-----	-----	-----	-----	-----	-----	-----	-----
#*** Conductivity, Temperature, Depth ***										
1915	040403	0	TDCT	B CTD 93/26.7	IOD	32-57.40N	117-18.28W	g		CNTL07RR
1948	040403	0	TDCT	E CTD 93/26.7	IOD	32-57.39N	117-18.28W	g		CNTL07RR
2145	040403	0	TDCT	B CTD 93/28	IOD	32-57.39N	117-17.18W	g		CNTL07RR
2204	040403	0	TDCT	E CTD 93/28	IOD	32-57.39N	117-17.19W	g		CNTL07RR
2250	040403	0	TDCT	B CTD 93/28 24	IOD	32-54.79N	117-23.68W	g		CNTL07RR
2357	040403	0	TDCT	E CTD 93/28	515M IOD	32-54.79N	117-23.69W	g		CNTL07RR
0223	050403	0	TDCT	B CTD 93/30 24	IOD	32-50.81N	117-31.87W	g		CNTL07RR
0327	050403	0	TDCT	E CTD 93/30	515M IOD	32-50.81N	117-31.87W	g		CNTL07RR
0655	050403	0	TDCT	B CTD 93/35 24	IOD	32-40.76N	117-52.29W	g		CNTL07RR
0800	050403	0	TDCT	E CTD 93/35	515M IOD	32-40.77N	117-52.36W	g		CNTL07RR
1210	050403	0	TDCT	B CTD 93/40	IOD	32-30.76N	118-12.79W	g		CNTL07RR
1248	050403	0	TDCT	E CTD 93-40	IOD	32-30.74N	118-12.80W	g		CNTL07RR
1739	050403	0	TDCT	B CTD 93/45	IOD	32-20.58N	118-34.40W	g		CNTL07RR
1845	050403	0	TDCT	E CTD 93/45	IOD	32-20.59N	118-34.39W	g		CNTL07RR
1853	050403	0	TDTV	B Freefall 93/45	IOD	32-20.59N	118-34.39W	g		CNTL07RR
1858	050403	0	TDTV	E Freefall 93/45	IOD	32-20.59N	118-34.39W	g		CNTL07RR
2205	050403	0	TDCT	B CTD 93/50	IOD	32-10.79N	118-53.59W	g		CNTL07RR
2304	050403	0	TDCT	E CTD 93/50	IOD	32-10.79N	118-53.59W	g		CNTL07RR
0231	060403	0	TDCT	B CTD 93/55	IOD	32-00.76N	119-13.98W	g		CNTL07RR
0336	060403	0	TDCT	E CTD 93/55	IOD	32-00.76N	119-14.00W	g		CNTL07RR
0649	060403	0	TDCT	B CTD 93/60	IOD	31-50.73N	119-34.25W	g		CNTL07RR
0749	060403	0	TDCT	E CTD 93/60	IOD	31-50.69N	119-34.31W	g		CNTL07RR
1234	060403	0	TDCT	B CTD 93/70	IOD	31-30.74N	120-14.79W	g		CNTL07RR
1331	060403	0	TDCT	E CTD 93/70	IOD	31-30.75N	120-14.79W	g		CNTL07RR
1815	060403	0	TDCT	B CTD 93/80	IOD	31-10.82N	120-55.19W	g		CNTL07RR
1919	060403	0	TDCT	E CTD 93/80	IOD	31-10.82N	120-55.19W	g		CNTL07RR
0029	070403	0	TDCT	B CTD 93/900	IOD	30-50.81N	121-35.41W	g		CNTL07RR
0129	070403	0	TDCT	E CTD 93/900	IOD	30-50.83N	121-35.39W	g		CNTL07RR
0644	070403	0	TDCT	B CTD 93/100	IOD	30-30.83N	122-15.40W	g		CNTL07RR
0742	070403	0	TDCT	E CTD 93/100	IOD	30-30.83N	122-15.41W	g		CNTL07RR
1212	070403	0	TDCT	B CTD 93/110	IOD	30-10.79N	122-55.41W	g		CNTL07RR
1310	070403	0	TDCT	E CTD 93/110	IOD	30-10.80N	122-55.40W	g		CNTL07RR
1820	070403	0	TDCT	B CTD 93/120	IOD	29-50.84N	123-35.18W	g		CNTL07RR
1916	070403	0	TDCT	E CTD 93/120	IOD	29-50.84N	123-35.18W	g		CNTL07RR
0018	080403	0	TDCT	B CTD 90/120	IOD	30-25.08N	123-59.96W	g		CNTL07RR
0112	080403	0	TDCT	E CTD 90/120	515M IOD	30-25.08N	123-59.98W	g		CNTL07RR
0230	080403	0	TDCT	B CTD #2 90/120	IOD	30-26.17N	124-00.18W	g		CNTL07RR
0323	080403	0	TDCT	E CTD #2 90/120	1030M IOD	30-26.17N	124-00.18W	g		CNTL07RR
0711	080403	0	TDCT	B CTD 90/110	IOD	30-45.07N	123-19.95W	g		CNTL07RR
1333	080403	0	TDCT	E CTD 90/110	IOD	31-05.09N	122-39.69W	g		CNTL07RR

#GMT #TIME #-----	DDMMYY DATE -----	TZ	SAMP CODE	B E	SAMPLE IDENTIFIER	DISP CODE	LATITUDE	LONGITUDE	p c	CRUISE LEG-SHIP
1809	080403	0	TDCT	B	CTD 90/90	IOD	31-25.12N	121-59.40W	g	CNTL07RR
1906	080403	0	TDCT	E	CTD 90/90	IOD	31-25.12N	121-59.40W	g	CNTL07RR
0131	090403	0	TDCT	B	CTD 90/80	IOD	31-45.09N	121-18.92W	g	CNTL07RR
0227	090403	0	TDCT	E	CTD 90/80	IOD	31-45.09N	121-18.92W	g	CNTL07RR
0639	090403	0	TDCT	B	CTD 90/70	IOD	32-05.09N	120-38.34W	g	CNTL07RR
0736	090403	0	TDCT	E	CTD 90/70	IOD	32-05.09N	120-38.35W	g	CNTL07RR
1241	090403	0	TDCT	B	CTD 90/600	IOD	32-25.10N	119-57.59W	g	CNTL07RR
1332	090403	0	TDCT	E	CTD 90/600	IOD	32-25.09N	119-57.59W	g	CNTL07RR
1744	090403	0	TDCT	B	CTD 90/53	IOD	32-39.12N	119-28.91W	g	CNTL07RR
1903	090403	0	TDCT	E	CTD 90/53	IOD	32-39.12N	119-28.91W	g	CNTL07RR
0010	100403	0	TDCT	B	CTD 90/45	IOD	32-55.10N	118-56.06W	g	CNTL07RR
0103	100403	0	TDCT	E	CTD 90/45	IOD	33-31.33N	117-54.51W	g	CNTL07RR
0544	100403	0	TDCT	B	CTD 90/37	IOD	33-11.12N	118-23.19W	g	CNTL07RR
0644	100403	0	TDCT	E	CTD 90/37	IOD	33-11.12N	118-23.19W	g	CNTL07RR
0858	100403	0	TDCT	B	CTD 90/35	IOD	33-15.09N	118-14.97W	g	CNTL07RR
0941	100403	0	TDCT	E	CTD 90/35	322M IOD	33-15.09N	118-14.97W	g	CNTL07RR
1242	100403	0	TDCT	B	CTD 90/30	IOD	33-25.12N	117-54.32W	g	CNTL07RR
1334	100403	0	TDCT	E	CTD 90/30	IOD	33-25.11N	117-54.33W	g	CNTL07RR
1828	100403	0	TDCT	B	CTD 90/28	IOD	33-29.01N	117-45.55W	g	CNTL07RR
1841	100403	0	TDCT	E	CTD 90/28	39M IOD	33-29.01N	117-45.55W	g	CNTL07RR
0027	110403	0	TDCT	B	CTD 87/33	IOD	33-53.45N	118-29.40W	g	CNTL07RR
0048	110403	0	TDCT	E	CTD 87/33	50M IOD	33-53.45N	118-29.40W	g	CNTL07RR
0300	110403	0	TDCT	B	CTD 87/35	IOD	33-49.38N	118-37.36W	g	CNTL07RR
0401	110403	0	TDCT	E	CTD 87/35	515M IOD	33-49.38N	118-37.36W	g	CNTL07RR
0710	110403	0	TDCT	B	CTD 87/40	IOD	33-39.39N	118-58.36W	g	CNTL07RR
0813	110403	0	TDCT	E	CTD 87/40	515M IOD	33-39.40N	118-58.37W	g	CNTL07RR
1104	110403	0	TDCT	B	CTD 87/40	IOD	33-29.38N	119-19.07W	g	CNTL07RR
1159	110403	0	TDCT	E	CTD 87/40	515M IOD	33-29.39N	119-19.07W	g	CNTL07RR
1450	110403	0	TDCT	B	CTD 87/50	IOD	33-19.39N	119-39.83W	g	CNTL07RR
1515	110403	0	TDCT	E	CTD 87/50	IOD	33-19.39N	119-39.83W	g	CNTL07RR
2102	110403	0	TDCT	B	Deepcast CTD	IOD	32-56.49N	119-13.28W	g	CNTL07RR
2133	110403	0	TDCT	E	Deepcast CTD	1020M IOD	32-56.49N	119-13.28W	g	CNTL07RR
0357	120403	0	TDCT	B	CTD 87/55	IOD	33-09.28N	120-00.29W	g	CNTL07RR
0507	120403	0	TDCT	E	CTD 87/55	535M IOD	33-08.63N	120-00.87W	g	CNTL07RR
0839	120403	0	TDCT	B	CTD 87/60	IOD	32-59.38N	120-20.93W	g	CNTL07RR
0934	120403	0	TDCT	E	CTD 87/60	515M IOD	32-59.40N	120-20.94W	g	CNTL07RR
1519	120403	0	TDCT	B	CTD 87/70	IOD	32-38.67N	121-02.67W	g	CNTL07RR
1540	120403	0	TDCT	E	CTD 87/70	IOD	32-38.67N	121-02.67W	g	CNTL07RR
1745	120403	0	TDCT	B	CTD 87/70	IOD	32-38.67N	121-02.67W	g	CNTL07RR
1846	120403	0	TDCT	E	CTD 87/70	515M IOD	32-38.67N	121-02.67W	g	CNTL07RR
2218	120403	0	TDCT	B	CTD 87/80	IOD	32-19.40N	121-42.90W	g	CNTL07RR
2313	120403	0	TDCT	E	CTD 87/80	515M IOD	32-19.40N	121-42.90W	g	CNTL07RR

#GMT	DDMMYY	SAMP	B	SAMPLE	DISP				p	CRUISE
#TIME	DATE	TZ	CODE	E IDENTIFIER	CODE	LATITUDE	LONGITUDE		c	LEG-SHIP
#-----	---	---	-----	-----	-----	-----	-----	-----	-	-----
0344	130403	0	TDCT	B CTD 87/90						CNTL07RR
0442	130403	0	TDCT	E CTD 87/90	515M	IOD	31-59.40N	122-23.55W	g	CNTL07RR
0548	130403	0	TDCT	B CTD Deep 87/90		IOD	31-58.32N	122-23.99W	g	CNTL07RR
0638	130403	0	TDCT	E CTD deep 87/90	35M	IOD	31-58.33N	122-23.99W	g	CNTL07RR
1008	130403	0	TDCT	B CTD 87/100		IOD	31-39.39N	123-04.19W	g	CNTL07RR
1114	130403	0	TDCT	E CTD 87/100	515M	IOD	31-39.43N	123-04.18W	g	CNTL07RR
1736	130403	0	TDCT	B CTD 87/110		IOD	31-19.04N	123-45.20W	g	CNTL07RR
1837	130403	0	TDCT	E CTD 87/110	515M	IOD	31-19.04N	123-45.20W	g	CNTL07RR
2257	130403	0	TDCT	B CTD 83/110		IOD	31-54.72N	124-10.22W	g	CNTL07RR
2348	130403	0	TDCT	E CTD 83/110	515M	IOD	31-54.72N	124-10.22W	g	CNTL07RR
0411	140403	0	TDCT	B CTD 83/100		IOD	32-14.72N	123-29.62W	g	CNTL07RR
0515	140403	0	TDCT	E CTD 83/100	515M	IOD	32-14.72N	123-29.63W	g	CNTL07RR
0619	140403	0	TDCT	B CTD deep 83/100		IOD	32-15.51N	123-29.72W	g	CNTL07RR
0706	140403	0	TDCT	E CTD deep 83/100		IOD	32-15.51N	123-29.72W	g	CNTL07RR
1045	140403	0	TDCT	B CTD 83/90		IOD	31-54.72N	124-10.22W	g	CNTL07RR
1126	140403	0	TDCT	E CTD 83/90	515M	IOD	32-34.70N	122-48.68W	g	CNTL07RR
1737	140403	0	TDCT	B CTD 83/80		IOD	32-54.64N	122-08.73W	g	CNTL07RR
1838	140403	0	TDCT	E CTD 83/80	517M	IOD	32-54.43N	122-08.10W	g	CNTL07RR
2201	140403	0	TDCT	B CTD 83/70		IOD	33-14.72N	121-26.59W	g	CNTL07RR
2259	140403	0	TDCT	E CTD 83/70	515M	IOD	33-14.71N	121-26.59W	g	CNTL07RR
0334	150403	0	TDCT	B CTD 83/60		IOD	33-34.83N	120-45.08W	g	CNTL07RR
0432	150403	0	TDCT	E CTD 83/60	515M	IOD	33-34.83N	120-45.09W	g	CNTL07RR
0828	150403	0	TDCT	B CTD 83/55		IOD	33-44.66N	120-24.60W	g	CNTL07RR
0927	150403	0	TDCT	E CTD 83/55	515M	IOD	33-44.68N	120-24.61W	g	CNTL07RR
1222	150403	0	TDCT	B CTD 83/51		IOD	33-52.69N	120-07.98W	g	CNTL07RR
1250	150403	0	TDCT	E CTD 83/51		IOD	33-52.69N	120-07.98W	g	CNTL07RR
1819	150403	0	TDCT	B CTD 83/42		IOD	34-10.69N	119-30.52W	g	CNTL07RR
1902	150403	0	TDCT	E CTD 83/42	128M	IOD	34-10.69N	119-30.52W	g	CNTL07RR
2210	150403	0	TDCT	B CTD 83/40.6		IOD	34-13.50N	119-24.71W	g	CNTL07RR
2233	150403	0	TDCT	E CTD 83/40.6	24M	IOD	34-13.50N	119-24.71W	g	CNTL07RR
0213	160403	0	TDCT	B CTD 82/46.5	560M	IOD	34-16.49N	119-59.31W	g	CNTL07RR
0303	160403	0	TDCT	E CTD 82/46.5		IOD	34-16.49N	119-59.31W	g	CNTL07RR
0755	160403	0	TDCT	B CTD 80/51		IOD	34-26.96N	120-31.40W	g	CNTL07RR
0821	160403	0	TDCT	E CTD 80/51	65M	IOD	34-26.96N	120-31.40W	g	CNTL07RR
1035	160403	0	TDCT	B CTD 80/55		IOD	34-19.00N	120-48.05W	g	CNTL07RR
1136	160403	0	TDCT	E CTD 80/55	515M	IOD	34-19.00N	120-48.07W	g	CNTL07RR
1438	160403	0	TDCT	B CTD 80/60		IOD	34-09.01N	121-08.99W	g	CNTL07RR
1505	160403	0	TDCT	E CTD 80/60		IOD	34-09.00N	121-08.99W	g	CNTL07RR
1736	160403	0	TDCT	B CTD 80/60		IOD	34-09.31N	121-07.82W	g	CNTL07RR
1837	160403	0	TDCT	E CTD 80/60	515M	IOD	34-09.31N	121-07.82W	g	CNTL07RR
2232	160403	0	TDCT	B CTD 80/70		IOD	33-48.97N	121-50.65W	g	CNTL07RR
2332	160403	0	TDCT	E CTD 80/70	515M	IOD	33-48.99N	121-50.62W	g	CNTL07RR

#GMT	DDMMYY	SAMP	B	SAMPLE	DISP				p	CRUISE
#TIME	DATE	TZ	CODE	E IDENTIFIER	CODE	LATITUDE	LONGITUDE		c	LEG-SHIP
#-----	---	---	-----	-----	-----	-----	-----	-----	-	-----
0406	170403	0	TDCT	B CTD 80/80						
0501	170403	0	TDCT	E CTD 80/80	515M	IOD	33-29.01N 122-31.97W	g		CNTL07RR
0602	170403	0	TDCT	B CTD deepcast 80/80						
0655	170403	0	TDCT	E CTD deepcast 80/80		IOD	33-30.10N 122-32.97W	g		CNTL07RR
1020	170403	0	TDCT	B CTD 80/90						
1113	170403	0	TDCT	E CTD 80/90	515M	IOD	33-08.99N 123-13.32W	g		CNTL07RR
1722	170403	0	TDCT	B CTD 80/100						
1834	170403	0	TDCT	E CTD 80/100	515M	IOD	33-09.00N 123-13.31W	g		CNTL07RR
2228	170403	0	TDCT	B CTD 77/100						
2330	170403	0	TDCT	E CTD 77/100	516M	IOD	32-49.40N 123-54.83W	g		CNTL07RR
0416	180403	0	TDCT	B CTD 77/90						
0517	180403	0	TDCT	E CTD 77/90	515M	IOD	32-49.40N 123-54.83W	g		CNTL07RR
1002	180403	0	TDCT	B CTD 77/80						
1058	180403	0	TDCT	E CTD 77/80	515M	IOD	33-43.28N 123-38.01W	g		CNTL07RR
1548	180403	0	TDCT	B CTD 77/70						
1814	180403	0	TDCT	E CTD 77/70		IOD	33-43.28N 123-38.02W	g		CNTL07RR
1829	180403	0	TDCT	B CTD 70/70	515M	IOD	34-03.30N 122-56.48W	g		CNTL07RR
1913	180403	0	TDCT	E CTD 70/70		IOD	34-03.30N 122-56.49W	g		CNTL07RR
2317	180403	0	TDCT	B CTD 77/60						
0015	190403	0	TDCT	E CTD 77/60	515M	IOD	34-23.29N 122-14.79W	g		CNTL07RR
0334	190403	0	TDCT	B CTD 77/55						
0430	190403	0	TDCT	E CTD 77/55	515M	IOD	34-23.67N 122-15.56W	g		CNTL07RR
0820	190403	0	TDCT	B CTD 77/51						
0859	190403	0	TDCT	E CTD 77/51	232M	IOD	34-43.28N 121-32.89W	g		CNTL07RR
1157	190403	0	TDCT	B CTD 77-49						
1220	190403	0	TDCT	E CTD 77-49		IOD	34-43.26N 121-32.92W	g		CNTL07RR
1622	190403	0	TDCT	B CTD 77/51						
1720	190403	0	TDCT	E CTD 77/51	220M	IOD	35-01.29N 120-55.10W	g		CNTL07RR
2107	190403	0	TDCT	B CTD 77/55						
2214	190403	0	TDCT	E CTD 77/55	511M	IOD	35-01.29N 120-55.10W	g		CNTL07RR
0021	200403	0	TDCT	B CTD 77/57.5						
0053	200403	0	TDCT	E CTD 77/57.5	470M	IOD	35-05.34N 120-46.56W	g		CNTL07RR
0105	200403	0	TDTV	B Freefall CTD						
0124	200403	0	TDTV	E Freefall CTD		IOD	35-05.29N 120-46.60W	g		CNTL07RR
0154	200403	0	TDCT	B CTD 77/60						
0310	200403	0	TDCT	E CTD 77/60	936M	IOD	35-01.30N 120-55.07W	g		CNTL07RR
0440	200403	0	TDTV	B Freefall CTD						
0508	200403	0	TDTV	E Freefall CTD		IOD	34-53.33N 121-11.84W	g		CNTL07RR
0548	200403	0	TDCT	B CTD 77/65						
0642	200403	0	TDCT	E CTD 77/65	30M	IOD	34-53.33N 121-11.84W	g		CNTL07RR

#GMT #TIME #-----	DDMMYY DATE -----	SAMP TZ ---	B CODE	SAMPLE E IDENTIFIER	DISP CODE	LATITUDE	LONGITUDE	p c	CRUISE LEG-SHIP
0744	200403	0	TDTV	B Freefall CTD	IOD	34-27.46N	122-05.01W	g	CNTL07RR
0803	200403	0	TDTV	E Freefall CTD	IOD	34-25.42N	122-09.13W	g	CNTL07RR
0833	200403	0	TDCT	B CTD 77/70	IOD	34-23.28N	122-14.82W	g	CNTL07RR
0954	200403	0	TDCT	E CTD 77/70	300M IOD	34-23.28N	122-14.81W	g	CNTL07RR
1145	200403	0	TDTV	B Freefall CTD	IOD	34-18.12N	122-25.69W	g	CNTL07RR
1206	200403	0	TDTV	E Freefall CTD	IOD	34-15.92N	122-29.79W	g	CNTL07RR
1238	200403	0	TDCT	B CTD 77/75	IOD	34-13.29N	122-35.59W	g	CNTL07RR
1328	200403	0	TDCT	E CTD 77/75	IOD	34-13.29N	122-35.59W	g	CNTL07RR
1427	200403	0	TDTV	B Freefall CTD	IOD	34-08.16N	122-46.21W	g	CNTL07RR
1447	200403	0	TDTV	E Freefall CTD	IOD	34-06.30N	122-50.33W	g	CNTL07RR
1522	200403	0	TDCT	B CTD 77/80	IOD	34-03.29N	122-56.48W	g	CNTL07RR
1640	200403	0	TDCT	E CTD 77/80	1027M IOD	34-03.29N	122-56.49W	g	CNTL07RR
1818	200403	0	TDTV	B Freefall CTD	IOD	33-57.97N	123-07.92W	g	CNTL07RR
1832	200403	0	TDTV	E Freefall CTD	IOD	33-56.53N	123-10.57W	g	CNTL07RR
1910	200403	0	TDCT	B CTD 77/85	IOD	33-53.28N	123-17.26W	g	CNTL07RR
2006	200403	0	TDCT	E CTD 77/85	1025M IOD	33-53.28N	123-17.26W	g	CNTL07RR
2102	200403	0	TDTV	B Freefall CTD	IOD	33-48.54N	123-27.06W	g	CNTL07RR
2130	200403	0	TDTV	E Freefall CTD	IOD	33-45.72N	123-32.89W	g	CNTL07RR
2201	200403	0	TDCT	B CTD 77/90	IOD	33-43.29N	123-38.01W	g	CNTL07RR
2321	200403	0	TDCT	E CTD 77/90	1025M IOD	33-43.30N	123-38.00W	g	CNTL07RR
0050	210403	0	TDTV	B UNDERWAY CTD	IOD	33-37.80N	123-49.92W	g	CNTL07RR
0108	210403	0	TDCT	E UNDERWAY CTD	IOD	33-35.88N	123-53.68W	g	CNTL07RR
0137	210403	0	TDCT	B CTD 77/95	IOD	33-33.23N	123-58.65W	g	CNTL07RR
0238	210403	0	TDCT	E CTD 77/95	1030M IOD	33-33.24N	123-58.65W	g	CNTL07RR
0333	210403	0	TDCT	B UNDERWAY CTD	IOD	33-28.09N	124-09.21W	g	CNTL07RR
0355	210403	0	TDCT	E UNDERWAY CTD	IOD	33-25.94N	124-13.94W	g	CNTL07RR
0426	210403	0	TDCT	B CTD 77/100	IOD	33-23.28N	124-19.45W	g	CNTL07RR
0546	210403	0	TDCT	E CTD 77/100	1030M IOD	33-23.30N	124-19.43W	g	CNTL07RR
0724	210403	0	TDCT	B UNDERWAY CTD	IOD	33-13.86N	124-13.09W	g	CNTL07RR
0748	210403	0	TDCT	E UNDERWAY CTD	IOD	33-09.83N	124-09.90W	g	CNTL07RR
0821	210403	0	TDCT	B CTD 78.4/100	IOD	33-05.58N	124-06.52W	g	CNTL07RR
0914	210403	0	TDCT	E CTD 78.4/100	1030M IOD	33-05.59N	124-06.52W	g	CNTL07RR
1015	210403	0	TDCT	B UNDERWAY CTD	IOD	32-57.04N	124-00.24W	g	CNTL07RR
1041	210403	0	TDCT	E UNDERWAY CTD	IOD	32-52.55N	123-56.98W	g	CNTL07RR
1109	210403	0	TDCT	B CTD 80/100	IOD	32-48.97N	123-54.37W	g	CNTL07RR
1230	210403	0	TDCT	E CTD 80/100	1030M IOD	32-48.97N	123-54.40W	g	CNTL07RR
1406	210403	0	TDCT	B UNDERWAY CTD	IOD	32-38.85N	123-46.95W	g	CNTL07RR
1428	210403	0	TDCT	E UNDERWAY CTD	IOD	32-34.74N	123-43.96W	g	CNTL07RR

#GMT #TIME #-----	DDMMYY DATE -----	SAMP TZ ---	B CODE	SAMPLE E IDENTIFIER	DISP CODE	LATITUDE	LONGITUDE	p c	CRUISE LEG-SHIP
1451	210403	0	TDCT	B CTD 81.7/100	IOD	32-31.28N	123-41.45W	g	CNTL07RR
1544	210403	0	TDCT	E CTD 81.7/100	IOD	32-31.28N	123-41.47W	g	CNTL07RR
1638	210403	0	TDCT	B UNDERWAY CTD	IOD	32-23.15N	123-35.60W	g	CNTL07RR
1659	210403	0	TDCT	E UNDERWAY CTD	IOD	32-19.45N	123-33.01W	g	CNTL07RR
1735	210403	0	TDCT	B CTD 83/100	IOD	32-14.61N	123-29.46W	g	CNTL07RR
1849	210403	0	TDCT	E CTD 83/100	1025M IOD	32-14.61N	123-29.47W	g	CNTL07RR
2032	210403	0	TDCT	B UNDERWAY CTD	IOD	32-05.81N	123-23.07W	g	CNTL07RR
2051	210403	0	TDCT	E UNDERWAY CTD	IOD	32-02.22N	123-20.51W	g	CNTL07RR
2126	210403	0	TDCT	B CTD 85/100	IOD	31-56.99N	123-16.80W	g	CNTL07RR
2220	210403	0	TDCT	E CTD 85/100	1025M IOD	31-56.99N	123-16.80W	g	CNTL07RR
2320	210403	0	TDCT	B UNDERWAY CTD	IOD	31-47.68N	123-10.07W	g	CNTL07RR
2342	210403	0	TDCT	E UNDERWAY CTD	IOD	31-43.59N	123-07.21W	g	CNTL07RR
0009	220403	0	TDCT	B CTD 87/100	IOD	31-39.36N	123-04.12W	g	CNTL07RR
0134	220403	0	TDCT	E CTD 87/100	1030M IOD	31-39.37N	123-04.12W	g	CNTL07RR
0300	220403	0	TDCT	B UNDERWAY CTD	IOD	31-30.20N	122-57.87W	g	CNTL07RR
0325	220403	0	TDCT	E UNDERWAY CTD	IOD	31-25.84N	122-54.48W	g	CNTL07RR
0350	220403	0	TDCT	B CTD 88.4/100	IOD	31-21.70N	122-51.50W	g	CNTL07RR
0447	220403	0	TDCT	E CTD 88.4/100	1030M IOD	31-21.69N	122-51.50W	g	CNTL07RR
0537	220403	0	TDCT	B UNDERWAY CTD	IOD	31-14.81N	122-46.55W	g	CNTL07RR
0608	220403	0	TDCT	E UNDERWAY CTD	IOD	31-09.43N	122-42.75W	g	CNTL07RR
0638	220403	0	TDCT	B CTD 90/100	IOD	31-05.12N	122-39.71W	g	CNTL07RR
0755	220403	0	TDCT	E CTD 90/100	IOD	31-05.12N	122-39.71W	g	CNTL07RR
0946	220403	0	TDCT	B UNDERWAY CTD	IOD	30-55.33N	122-32.81W	g	CNTL07RR
1012	220403	0	TDCT	E UNDERWAY CTD	IOD	30-50.66N	122-29.51W	g	CNTL07RR
1034	220403	0	TDCT	B CTD 91.7/100	IOD	30-47.38N	122-27.17W	g	CNTL07RR
1128	220403	0	TDCT	E CTD 91.7/100	1030M IOD	30-47.39N	122-27.19W	g	CNTL07RR
1321	220403	0	TDCT	B CTD 93/100	IOD	30-30.80N	122-15.48W	g	CNTL07RR
1436	220403	0	TDCT	E CTD 93/100	IOD	30-30.80N	122-15.49W	g	CNTL07RR
1617	220403	0	TDCT	B UNDERWAY CTD	IOD	30-37.35N	122-02.98W	g	CNTL07RR
1640	220403	0	TDCT	E UNDERWAY CTD	IOD	30-39.48N	121-57.97W	g	CNTL07RR
1656	220403	0	TDCT	B CTD 93/95	IOD	30-40.79N	121-55.41W	g	CNTL07RR
1751	220403	0	TDCT	E CTD 93/95	1025M IOD	30-40.79N	121-55.41W	g	CNTL07RR
1853	220403	0	TDCT	B UNDERWAY CTD	IOD	30-46.11N	121-44.72W	g	CNTL07RR
1916	220403	0	TDCT	E UNDERWAY CTD	IOD	30-48.57N	121-40.01W	g	CNTL07RR
1945	220403	0	TDCT	B CTD 93/90	IOD	30-50.77N	121-35.42W	g	CNTL07RR
2101	220403	0	TDCT	E CTD 93/90	1025M IOD	30-50.78N	121-35.42W	g	CNTL07RR
2225	220403	0	TDCT	B UNDERWAY CTD	IOD	30-55.97N	121-26.45W	g	CNTL07RR
2248	220403	0	TDCT	E UNDERWAY CTD	IOD	30-58.03N	121-21.43W	g	CNTL07RR
2323	220403	0	TDCT	B CTD 93/85	IOD	31-00.80N	121-15.29W	g	CNTL07RR
0118	230403	0	TDCT	E CTD 93/85	2475M IOD	31-00.80N	121-15.29W	g	CNTL07RR
0214	230403	0	TDCT	B Towed CTD	IOD	31-05.74N	121-05.72W	g	CNTL07RR
0235	230403	0	TDCT	E Towed CTD	IOD	31-07.78N	121-01.38W	g	CNTL07RR

#GMT	DDMMYY	SAMP	B	SAMPLE	DISP				p	CRUISE
#TIME	DATE	TZ	CODE	E IDENTIFIER	CODE	LATITUDE	LONGITUDE		c	LEG-SHIP
#-----	---	---	-----	-----	-----	-----	-----	-----	-	-----
0310	230403	0	TDCT	B CTD 93/80	IOD	31-10.82N	120-55.14W	g		CNTL07RR
0432	230403	0	TDCT	E CTD 93/80	1030M IOD	31-10.82N	120-55.14W	g		CNTL07RR
0622	230403	0	TDCT	B Towed CTD	IOD	31-15.74N	120-45.94W	g		CNTL07RR
0645	230403	0	TDCT	E Towed CTD	IOD	31-17.89N	120-41.31W	g		CNTL07RR
0720	230403	0	TDCT	B CTD 93/75	IOD	31-20.78N	120-35.01W	g		CNTL07RR
0814	230403	0	TDCT	E CTD 93/75	1030M IOD	31-20.78N	120-35.02W	g		CNTL07RR
0910	230403	0	TDCT	B Towed CTD	IOD	31-25.56N	120-25.39W	g		CNTL07RR
0930	230403	0	TDCT	E Towed CTD	IOD	31-27.58N	120-21.26W	g		CNTL07RR
1007	230403	0	TDCT	B CTD 93/70	IOD	31-30.79N	120-14.79W	g		CNTL07RR
1126	230403	0	TDCT	E CTD 93/70	1030M IOD	31-30.79N	120-14.80W	g		CNTL07RR
1259	230403	0	TDCT	B Towed CTD	IOD	31-35.63N	120-04.74W	g		CNTL07RR
1319	230403	0	TDCT	E Towed CTD	IOD	31-37.57N	120-00.82W	g		CNTL07RR
1355	230403	0	TDCT	B CTD 95/65	IOD	31-40.78N	119-54.59W	g		CNTL07RR
1444	230403	0	TDCT	E CTD 95/65	IOD	31-40.78N	119-54.59W	g		CNTL07RR
1536	230403	0	TDCT	B Towed CTD	IOD	31-45.34N	119-45.37W	g		CNTL07RR
1556	230403	0	TDCT	E Towed CTD	IOD	31-47.40N	119-41.25W	g		CNTL07RR
1634	230403	0	TDCT	B CTD 93/60	IOD	31-50.78N	119-34.33W	g		CNTL07RR
1750	230403	0	TDCT	E CTD 93/60	1025M IOD	31-50.78N	119-34.33W	g		CNTL07RR
1915	230403	0	TDCT	B Towed CTD	IOD	31-55.54N	119-25.89W	g		CNTL07RR
1938	230403	0	TDCT	E Towed CTD	IOD	31-57.82N	119-21.16W	g		CNTL07RR
2014	230403	0	TDCT	B CTD 93/55	IOD	32-00.84N	119-14.00W	g		CNTL07RR
2036	230403	0	TDCT	E CTD 93/55	1025M IOD	32-00.82N	119-14.00W	g		CNTL07RR
2222	230403	0	TDCT	B Towed CTD	IOD	32-02.74N	119-11.10W	g		CNTL07RR
2242	230403	0	TDCT	E Towed CTD	IOD	32-04.57N	119-06.70W	g		CNTL07RR
2300	230403	0	TDCT	B CTD 93/52.5	IOD	32-05.79N	119-03.79W	g		CNTL07RR
2348	230403	0	TDCT	E CTD 93/52.5	1025M IOD	32-05.79N	119-03.79W	g		CNTL07RR
0010	240403	0	TDCT	B Towed CTD	IOD	32-07.46N	119-00.45W	g		CNTL07RR
0031	240403	0	TDCT	E Towed CTD	IOD	32-09.61N	118-56.05W	g		CNTL07RR
#*** Nephelometers ***										
2000	040403	0	NEXX	B MER 93/26.7	IOD	32-57.38N	117-18.26W	g		CNTL07RR
2009	040403	0	NEXX	E MER 93/26.7	IOD	32-57.38N	117-18.26W	g		CNTL07RR
0007	050403	0	NEXX	B MER 93/28	IOD	32-54.79N	117-23.69W	g		CNTL07RR
0015	050403	0	NEXX	E MER 93/28	IOD	32-54.79N	117-23.69W	g		CNTL07RR
1703	050403	0	NEXX	B MER 93/45	IOD	32-20.58N	118-34.40W	g		CNTL07RR
1710	050403	0	NEXX	E MER 93/45	IOD	32-20.59N	118-34.39W	g		CNTL07RR
2150	050403	0	NEXX	B Free Fall MER 93/50	IOD	32-10.79N	118-53.58W	g		CNTL07RR
2201	050403	0	NEXX	E Free Fall MER 93/50	IOD	32-10.79N	118-53.59W	g		CNTL07RR
1922	060403	0	NEXX	B Free Fall MER 93/800	IOD	31-10.82N	120-55.19W	g		CNTL07RR
1952	060403	0	NEXX	E Free Fall MER 93/800	IOD	31-10.84N	120-55.19W	g		CNTL07RR

#GMT #TIME #-----	DDMMYY DATE	TZ	SAMP CODE	B E	SAMPLE IDENTIFIER	DISP CODE	LATITUDE	LONGITUDE	p c	CRUISE LEG-SHIP
1742	070403	0	NEXX	B	Free Fall MER 93/120	IOD	29-50.80N	123-35.16W	g	CNTL07RR
1803	070403	0	NEXX	E	Free Fall MER 93/120	IOD	29-50.83N	123-35.18W	g	CNTL07RR
2026	070403	0	NEXX	B	MER 93/120	IOD	29-51.72N	123-35.65W	g	CNTL07RR
2043	070403	0	NEXX	E	MER 93/120	IOD	29-51.72N	123-35.65W	g	CNTL07RR
1911	080403	0	NEXX	B	Free Fall MER 90/90	IOD	31-25.12N	121-59.40W	g	CNTL07RR
1936	080403	0	NEXX	E	Free Fall MER 90/90	IOD	31-25.21N	121-59.40W	g	CNTL07RR
2050	080403	0	NEXX	B	MER 90/90	IOD	31-25.24N	121-59.40W	g	CNTL07RR
2109	080403	0	NEXX	E	MER 90/90	IOD	31-25.24N	121-59.40W	g	CNTL07RR
1703	090403	0	NEXX	B	Free Fall MER 90/533	IOD	32-39.11N	119-28.91W	g	CNTL07RR
1727	090403	0	NEXX	E	Free Fall Mer 90/533	IOD	32-39.12N	119-28.91W	g	CNTL07RR
1904	090403	0	NEXX	B	MER 90/53	IOD	32-39.12N	119-28.91W	g	CNTL07RR
1926	090403	0	NEXX	E	MER 90/53	IOD	32-39.12N	119-28.91W	g	CNTL07RR
1702	100403	0	NEXX	B	Free Fall MER 90/28	IOD	33-29.04N	117-45.79W	g	CNTL07RR
1720	100403	0	NEXX	E	Free Fall MER 90/28	IOD	33-29.02N	117-45.60W	g	CNTL07RR
1803	100403	0	NEXX	B	MER 90/28	IOD	33-29.01N	117-45.55W	g	CNTL07RR
1810	100403	0	NEXX	E	MER 90/28	IOD	33-29.01N	117-45.55W	g	CNTL07RR
0000	110403	0	NEXX	B	MER 87/33	IOD	33-53.45N	118-29.39W	g	CNTL07RR
0022	110403	0	NEXX	E	MER 87/33	IOD	33-53.45N	118-29.40W	g	CNTL07RR
1646	120403	0	NEXX	B	Free Fall MER 87/70	IOD	32-38.67N	121-02.67W	g	CNTL07RR
1701	120403	0	NEXX	E	Free Fall MER 87/70	IOD	32-38.67N	121-02.67W	g	CNTL07RR
1707	120403	0	NEXX	B	MER 87/70	IOD	32-38.67N	121-02.67W	g	CNTL07RR
1727	120403	0	NEXX	E	MER 87/70	IOD	32-38.67N	121-02.67W	g	CNTL07RR
1703	130403	0	NEXX	B	Free Fall MER 87/110	IOD	31-19.04N	123-45.20W	g	CNTL07RR
1718	130403	0	NEXX	E	Free Fall MER 87/110	IOD	31-19.04N	123-45.20W	g	CNTL07RR
1847	130403	0	NEXX	B	MER 87/110	IOD	31-19.04N	123-45.20W	g	CNTL07RR
1909	130403	0	NEXX	E	MER 87/110	IOD	31-19.04N	123-45.20W	g	CNTL07RR
1635	140403	0	NEXX	B	Free Fall MER 83/80	IOD	32-54.57N	122-08.84W	g	CNTL07RR
1649	140403	0	NEXX	E	Free Fall MER 83/80	IOD	32-54.57N	122-08.84W	g	CNTL07RR
1704	140403	0	NEXX	B	MER 83/80	IOD	32-54.58N	122-08.83W	g	CNTL07RR
1720	140403	0	NEXX	E	MER 83/80	IOD	32-54.62N	122-08.83W	g	CNTL07RR
1743	150403	0	NEXX	B	MER 83/42	IOD	34-10.69N	119-30.51W	g	CNTL07RR
1802	150403	0	NEXX	E	MER 83/42	IOD	34-10.69N	119-30.52W	g	CNTL07RR
1905	150403	0	NEXX	B	Free Fall MER 83/42	IOD	34-10.69N	119-30.52W	g	CNTL07RR
1928	150403	0	NEXX	E	Free Fall MER 83/42	IOD	34-10.70N	119-30.48W	g	CNTL07RR
2150	150403	0	NEXX	B	Free FallMER 83/40.6	IOD	34-13.50N	119-24.68W	g	CNTL07RR
2203	150403	0	NEXX	E	Free FallMER 83/40.6	IOD	34-13.50N	119-24.77W	g	CNTL07RR
1655	160403	0	NEXX	B	Mer 80/60	IOD	34-09.32N	121-07.81W	g	CNTL07RR
1715	160403	0	NEXX	E	Mer 80/60	IOD	34-09.31N	121-07.82W	g	CNTL07RR

#GMT	DDMMYY	SAMP	B	SAMPLE	DISP				p	CRUISE
#TIME	DATE	TZ	CODE	E IDENTIFIER	CODE	LATITUDE	LONGITUDE		c	LEG-SHIP
#-----	---	-----	-----	-----	-----	-----	-----	-----	-----	-----
1840	160403	0	NEXX	B Free Fall MER 80/60	IOD	34-09.31N	121-07.82W	g		CNTL07RR
1856	160403	0	NEXX	E Free Fall Mer 80/60	IOD	34-09.32N	121-07.81W	g		CNTL07RR
1620	170403	0	NEXX	B MER 80/100	IOD	32-49.40N	123-54.83W	g		CNTL07RR
1639	170403	0	NEXX	E MER 80/100	IOD	32-49.40N	123-54.83W	g		CNTL07RR
1646	170403	0	NEXX	B Free Fall Mer 80/100	IOD	32-49.40N	123-54.83W	g		CNTL07RR
1705	170403	0	NEXX	E Free Fall MER 80/100	IOD	32-49.40N	123-54.83W	g		CNTL07RR
1726	180403	0	NEXX	B MER 77/70	IOD	34-23.67N	122-15.56W	g		CNTL07RR
1752	180403	0	NEXX	E MER 77/70	IOD	34-23.68N	122-15.56W	g		CNTL07RR
1917	180403	0	NEXX	B Free Fall MER 77/70	IOD	34-23.67N	122-15.56W	g		CNTL07RR
1936	180403	0	NEXX	E Free Fall MER 77/70	IOD	34-23.72N	122-15.56W	g		CNTL07RR
1927	190403	0	NEXX	B Free Fall Mer 77/55	IOD	34-53.29N	121-11.89W	g		CNTL07RR
1950	190403	0	NEXX	E Free Fall MER 77/55	IOD	34-53.29N	121-11.90W	g		CNTL07RR
1925	210403	0	NEXX	B Free Fall Mer 83/100	IOD	32-14.43N	123-29.85W	g		CNTL07RR
1934	210403	0	NEXX	E Free Fall Mer 83/100	IOD	32-14.43N	123-29.85W	g		CNTL07RR
0022	220403	0	NEXX	B Free Fall MER 87/10	IOD	31-39.36N	123-04.12W	g		CNTL07RR
0042	220403	0	NEXX	E Free Fall MER 87/10	IOD	31-39.37N	123-04.11W	g		CNTL07RR
2002	220403	0	NEXX	B Free Fall MER 93/90	IOD	30-50.78N	121-35.42W	g		CNTL07RR
2036	220403	0	NEXX	E Free Fall MER 93/90	IOD	30-50.78N	121-35.42W	g		CNTL07RR
**** Open Nets ****										
**** Pairovet and Bongo samples shared with National Marine Fisheries Services*										
2023	040403	0	ONVT	B Pairovet 93/26.7	IOD	32-57.38N	117-18.26W	g		CNTL07RR
2026	040403	0	ONVT	E Pairovet 93/26.7	IOD	32-57.38N	117-18.26W	g		CNTL07RR
2100	040403	0	ONBG	B Bongo 93/26.7	IOD	32-56.91N	117-18.82W	g		CNTL07RR
2116	040403	0	ONBG	E Bongo 93/26.7	IOD	32-56.59N	117-19.23W	g		CNTL07RR
0029	050403	0	ONVT	B Pairovet 93/28	IOD	32-54.79N	117-23.69W	g		CNTL07RR
0031	050403	0	ONVT	E Pairovet 93/28	IOD	32-54.79N	117-23.69W	g		CNTL07RR
0102	050403	0	ONBG	B Bongo 93/28	IOD	32-54.80N	117-24.09W	g		CNTL07RR
0128	050403	0	ONBG	E Bongo 93/28	IOD	32-54.49N	117-24.88W	g		CNTL07RR
0341	050403	0	ONVT	B Pairovet93/30	IOD	32-50.81N	117-31.87W	g		CNTL07RR
0345	050403	0	ONVT	E Pairovet93/30	IOD	32-50.81N	117-31.87W	g		CNTL07RR
0415	050403	0	ONBG	B Bongo 93/30	IOD	32-50.82N	117-32.43W	g		CNTL07RR
0433	050403	0	ONBG	E Bongo 93/30	IOD	32-50.68N	117-32.84W	g		CNTL07RR
0809	050403	0	ONVT	B Pairovet93/35	IOD	32-40.77N	117-52.36W	g		CNTL07RR
0814	050403	0	ONVT	E Pairovet93/35	IOD	32-40.77N	117-52.36W	g		CNTL07RR
0845	050403	0	ONBG	B Bongo 93/35	IOD	32-40.23N	117-53.06W	g		CNTL07RR
0909	050403	0	ONBG	E Bongo 93/35	IOD	32-39.68N	117-53.44W	g		CNTL07RR
1258	050403	0	ONVT	B Pairovet93-40	IOD	32-30.73N	118-12.81W	g		CNTL07RR
1308	050403	0	ONVT	E Pairovet93-40	IOD	32-30.74N	118-12.82W	g		CNTL07RR
1329	050403	0	ONBG	B Bongo 93-40	IOD	32-30.85N	118-13.23W	g		CNTL07RR
1354	050403	0	ONBG	E Bongo 93-40	IOD	32-30.95N	118-13.90W	g		CNTL07RR

#GMT #TIME #-----	DDMMYY DATE	SAMP TZ	B CODE	SAMPLE E IDENTIFIER	DISP CODE	LATITUDE	LONGITUDE	p c	CRUISE LEG-SHIP
1554	050403	0	ONVT	B Pairovet93/45	IOD	32-20.71N	118-33.30W	g	CNTL07RR
1557	050403	0	ONVT	E Pairovet93/45	IOD	32-20.71N	118-33.31W	g	CNTL07RR
1631	050403	0	ONBG	B Bongo 93/45	IOD	32-20.58N	118-33.76W	g	CNTL07RR
1656	050403	0	ONBG	E Bongo 93/45	IOD	32-20.58N	118-34.36W	g	CNTL07RR
2318	050403	0	ONVT	B Pairovet93/50	IOD	32-10.79N	118-53.59W	g	CNTL07RR
2329	050403	0	ONVT	E Pairovet93/50	IOD	32-10.79N	118-53.60W	g	CNTL07RR
0000	060403	0	ONBG	B Bongo 93/50	IOD	32-10.81N	118-53.93W	g	CNTL07RR
0023	060403	0	ONBG	E Bongo 93/50	IOD	32-11.07N	118-54.53W	g	CNTL07RR
0343	060403	0	ONVT	B Pairovet 93/55	IOD	32-00.76N	119-14.00W	g	CNTL07RR
0349	060403	0	ONVT	E Pairovet 93/55	IOD	32-00.76N	119-14.00W	g	CNTL07RR
0422	060403	0	ONBG	B Bongo 93/55	IOD	32-00.94N	119-14.64W	g	CNTL07RR
0449	060403	0	ONBG	E Bongo 93/55	IOD	32-01.01N	119-15.35W	g	CNTL07RR
0758	060403	0	ONVT	B Pairovet93/60	IOD	31-50.69N	119-34.30W	g	CNTL07RR
0804	060403	0	ONVT	E Pairovet93/60	IOD	31-50.68N	119-34.31W	g	CNTL07RR
0834	060403	0	ONBG	B Bongo 93/60	IOD	31-50.68N	119-34.95W	g	CNTL07RR
0856	060403	0	ONBG	E Bongo 93/60	IOD	31-50.76N	119-35.54W	g	CNTL07RR
1341	060403	0	ONVT	B Pairovet93-70	IOD	31-30.74N	120-14.80W	g	CNTL07RR
1344	060403	0	ONVT	E Pairovet93-70	IOD	31-30.74N	120-14.79W	g	CNTL07RR
1414	060403	0	ONBG	B Bongo Tow 93-70	IOD	31-30.88N	120-14.86W	g	CNTL07RR
1438	060403	0	ONBG	E Bongo Tow 93-70	IOD	31-31.18N	120-15.10W	g	CNTL07RR
2029	060403	0	ONBG	B Bongo 93/800	IOD	31-11.80N	120-56.19W	g	CNTL07RR
2054	060403	0	ONBG	E Bongo 93/800	IOD	31-12.22N	120-56.89W	g	CNTL07RR
0246	070403	0	ONBG	B Bongo 93/90	IOD	30-51.39N	121-35.92W	g	CNTL07RR
0309	070403	0	ONBG	E Bongo 93/90	IOD	30-51.99N	121-36.45W	g	CNTL07RR
0815	070403	0	ONBG	B Bongo 93/10	IOD	30-31.29N	122-15.38W	g	CNTL07RR
0839	070403	0	ONBG	E Bongo 93/10	IOD	30-31.70N	122-15.65W	g	CNTL07RR
1340	070403	0	ONBG	B Bongo 93/110	IOD	30-11.19N	122-55.51W	g	CNTL07RR
1412	070403	0	ONBG	E Bongo 93/110	IOD	30-11.90N	122-55.73W	g	CNTL07RR
2000	070403	0	ONBG	B Bongo 93/120	IOD	29-51.34N	123-35.38W	g	CNTL07RR
2021	070403	0	ONBG	E Bongo 93/120	IOD	29-51.69N	123-35.62W	g	CNTL07RR
0152	080403	0	ONBG	B Bongo 90/120	IOD	30-25.64N	123-59.92W	g	CNTL07RR
0214	080403	0	ONBG	E Bongo 90/120	IOD	30-26.15N	124-00.16W	g	CNTL07RR
0842	080403	0	ONBG	B Bongo 90/110	IOD	30-45.45N	123-20.66W	g	CNTL07RR
0905	080403	0	ONBG	E Bongo 90/110	IOD	30-45.69N	123-21.27W	g	CNTL07RR
1401	080403	0	ONBG	B Bongo 90-100	IOD	31-05.60N	122-39.97W	g	CNTL07RR
1423	080403	0	ONBG	E Bongo 90-100	IOD	31-06.05N	122-40.25W	g	CNTL07RR
2140	080403	0	ONBG	B Bongo 90/90	IOD	31-25.60N	121-59.89W	g	CNTL07RR
2202	080403	0	ONBG	E Bongo 90/90	IOD	31-25.93N	122-00.33W	g	CNTL07RR
0253	090403	0	ONBG	B Bongo 90/80	IOD	31-45.49N	121-19.05W	g	CNTL07RR
0316	090403	0	ONBG	E Bongo 90/80	IOD	31-45.96N	121-19.24W	g	CNTL07RR

#GMT	DDMMYY	SAMP	B	SAMPLE	DISP				p	CRUISE
#TIME	DATE	TZ	CODE	E IDENTIFIER	CODE	LATITUDE	LONGITUDE		c	LEG-SHIP
#-----	-----	---	-----	-----	-----	-----	-----	-----	-	-----
0746	090403	0	ONVT	B Pairovet 90/70	IOD	32-05.09N	120-38.35W	g		CNTL07RR
0750	090403	0	ONVT	E Pairovet 90/70	IOD	32-05.09N	120-38.35W	g		CNTL07RR
0844	090403	0	ONBG	B Bongo 90/70	IOD	32-05.24N	120-39.57W	g		CNTL07RR
0906	090403	0	ONBG	E Bongo 90/70	IOD	32-05.34N	120-40.11W	g		CNTL07RR
1340	090403	0	ONVT	B Pairovet 90-600	IOD	32-25.09N	119-57.59W	g		CNTL07RR
1343	090403	0	ONVT	E Pairovet 90-600	IOD	32-25.09N	119-57.59W	g		CNTL07RR
1406	090403	0	ONBG	B Bongo 90-600	IOD	32-25.18N	119-58.07W	g		CNTL07RR
1430	090403	0	ONBG	E Bongo 90-600	IOD	32-25.35N	119-58.70W	g		CNTL07RR
2023	090403	0	ONVT	B Pairovet 90/53	IOD	32-39.12N	119-28.91W	g		CNTL07RR
2030	090403	0	ONVT	E Pairovet 90/53	IOD	32-39.12N	119-28.91W	g		CNTL07RR
2054	090403	0	ONBG	B Bongo 90/53	IOD	32-39.04N	119-29.32W	g		CNTL07RR
2116	090403	0	ONBG	E Bongo 90/53	IOD	32-39.02N	119-29.84W	g		CNTL07RR
0113	100403	0	ONVT	B Pairovet 90/45	IOD	32-55.10N	118-56.06W	g		CNTL07RR
0118	100403	0	ONVT	E Pairovet 90/45	IOD	32-55.10N	118-56.06W	g		CNTL07RR
0212	100403	0	ONBG	B Bongo 90/45	IOD	32-55.20N	118-57.18W	g		CNTL07RR
0234	100403	0	ONBG	E Bongo 90/45	IOD	32-55.25N	118-57.82W	g		CNTL07RR
0648	100403	0	ONVT	B Pairovet 90/37	IOD	33-11.12N	118-23.19W	g		CNTL07RR
0948	100403	0	ONVT	E Pairovet 90/37	IOD	33-15.09N	118-14.97W	g		CNTL07RR
0722	100403	0	ONBG	B Bongo 90/37	IOD	33-11.08N	118-23.63W	g		CNTL07RR
0748	100403	0	ONBG	E Bongo 90/37	IOD	33-10.78N	118-24.18W	g		CNTL07RR
1018	100403	0	ONBG	B Bongo 90/35	IOD	33-14.69N	118-15.31W	g		CNTL07RR
1041	100403	0	ONBG	E Bongo 90/35	IOD	33-14.29N	118-15.66W	g		CNTL07RR
1341	100403	0	ONVT	B Pairovet 90-30	IOD	33-25.11N	117-54.33W	g		CNTL07RR
1346	100403	0	ONVT	E Pairovet 90-30	IOD	33-25.11N	117-54.33W	g		CNTL07RR
1411	100403	0	ONBG	Bongo 90-30	IOD	33-24.81N	117-54.06W	g		CNTL07RR
1600	100403	0	ONVT	B Pairovet 90/28	IOD	33-29.09N	117-46.13W	g		CNTL07RR
1605	100403	0	ONVT	E Pairovet 90/28	IOD	33-29.09N	117-46.13W	g		CNTL07RR
1648	100403	0	ONBG	B Bongo 90/28	IOD	33-29.10N	117-45.98W	g		CNTL07RR
1653	100403	0	ONBG	E Bongo 90/28	IOD	33-29.05N	117-45.83W	g		CNTL07RR
0126	110403	0	ONVT	B Pairovet 87/33	IOD	33-53.45N	118-29.40W	g		CNTL07RR
0131	110403	0	ONVT	E Pairovet 87/33	IOD	33-53.45N	118-29.40W	g		CNTL07RR
0407	110403	0	ONVT	B Pairovet 87/35	IOD	33-49.38N	118-37.36W	g		CNTL07RR
0414	110403	0	ONVT	E Pairovet 87/35	IOD	33-49.38N	118-37.36W	g		CNTL07RR
0440	110403	0	ONBG	B Bongo 87/35	IOD	33-49.15N	118-37.90W	g		CNTL07RR
0513	110403	0	ONBG	E Bongo 87/35	IOD	33-48.72N	118-38.37W	g		CNTL07RR
0820	110403	0	ONVT	B Pairovet 87/40	IOD	33-39.40N	118-58.37W	g		CNTL07RR
0824	110403	0	ONVT	E Pairovet 87/40	IOD	33-39.40N	118-58.37W	g		CNTL07RR
0850	110403	0	ONBG	B Bongo 87/40	IOD	33-39.40N	118-59.23W	g		CNTL07RR
0912	110403	0	ONBG	E Bongo 87/40	IOD	33-39.36N	118-59.89W	g		CNTL07RR

#GMT #TIME #-----	DDMMYY DATE	TZ	SAMP CODE	B E	SAMPLE IDENTIFIER	DISP CODE	LATITUDE	LONGITUDE	p c	CRUISE LEG-SHIP
1205	110403	0	ONVT	B	Pairovet	IOD	33-29.39N	119-19.07W	g	CNTL07RR
1209	110403	0	ONVT	E	Pairovet	IOD	33-29.39N	119-19.07W	g	CNTL07RR
1235	110403	0	ONBG	B	Bongo Tow	IOD	33-29.51N	119-19.47W	g	CNTL07RR
1257	110403	0	ONBG	E	Bongo Tow	IOD	33-29.64N	119-20.00W	g	CNTL07RR
1525	110403	0	ONVT	B	Pairovet net	IOD	33-19.39N	119-39.83W	g	CNTL07RR
1529	110403	0	ONVT	E	Pairovet net	IOD	33-19.39N	119-39.83W	g	CNTL07RR
1603	110403	0	ONBG	B	Bongo 87/50	IOD	33-19.57N	119-40.59W	g	CNTL07RR
1607	110403	0	ONBG	E	Bongo 87/50	IOD	33-19.57N	119-40.61W	g	CNTL07RR
0558	120403	0	ONVT	B	Pairovet 87/55	IOD	33-07.74N	120-01.54W	g	CNTL07RR
0602	120403	0	ONVT	E	Pairovet 87/55	IOD	33-07.68N	120-01.56W	g	CNTL07RR
0627	120403	0	ONBG	B	Bongo 87/55	IOD	33-07.30N	120-01.78W	g	CNTL07RR
0659	120403	0	ONBG	E	Bongo 87/55	IOD	33-06.75N	120-02.47W	g	CNTL07RR
0940	120403	0	ONVT	B	Pairovet 87/60	IOD	32-59.40N	120-20.94W	g	CNTL07RR
0945	120403	0	ONVT	E	Pairovet 87/60	IOD	32-59.40N	120-20.93W	g	CNTL07RR
1012	120403	0	ONBG	B	Bongo 87/60	IOD	32-58.79N	120-20.01W	g	CNTL07RR
1034	120403	0	ONBG	E	Bongo 87/60	IOD	32-57.14N	119-15.66W	g	CNTL07RR
1410	120403	0	ONVT	B	Pairovet 87-70	IOD	32-39.39N	121-01.94W	g	CNTL07RR
1416	120403	0	ONVT	E	Pairovet 87-70	IOD	32-39.38N	121-01.94W	g	CNTL07RR
1440	120403	0	ONBG	B	Bongo 87-70	IOD	32-39.16N	121-02.22W	g	CNTL07RR
1505	120403	0	ONBG	E	Bongo 87-70	IOD	32-38.79N	121-02.58W	g	CNTL07RR
2348	120403	0	ONBG	B	Bongo 87/80	IOD	32-19.01N	121-42.71W	g	CNTL07RR
0011	130403	0	ONBG	E	Bongo 87/80	IOD	32-18.46N	121-42.56W	g	CNTL07RR
0512	130403	0	ONBG	B	Bongo 87/90	IOD	31-58.93N	122-23.78W	g	CNTL07RR
0540	130403	0	ONBG	E	Bongo 87/90	IOD	31-58.33N	122-24.00W	g	CNTL07RR
1142	130403	0	ONBG	B	Bongo 87/100	IOD	31-39.09N	123-03.79W	g	CNTL07RR
1207	130403	0	ONBG	E	Bongo 87/100	IOD	31-38.68N	123-03.22W	g	CNTL07RR
1632	130403	0	ONBG	B	Bongo 87/110	IOD	31-19.31N	123-44.68W	g	CNTL07RR
1658	130403	0	ONBG	E	Bongo 87/110	IOD	31-19.07N	123-45.21W	g	CNTL07RR
0022	140403	0	ONBG	B	Bongo 83/110	IOD	31-54.97N	124-10.76W	g	CNTL07RR
0044	140403	0	ONBG	E	Bongo 83/110	IOD	31-55.09N	124-11.36W	g	CNTL07RR
0541	140403	0	ONBG	B	Bongo 83/100	IOD	32-14.86N	123-29.82W	g	CNTL07RR
0611	140403	0	ONBG	E	Bongo 83/100	IOD	32-15.45N	123-29.77W	g	CNTL07RR
1155	140403	0	ONBG	B	Bongo 83/90	IOD	32-34.56N	122-49.00W	g	CNTL07RR
1218	140403	0	ONBG	E	Bongo 83/90	IOD	32-34.54N	122-49.50W	g	CNTL07RR
1605	140403	0	ONBG	B	Bongo 83/80	IOD	32-54.67N	122-08.08W	g	CNTL07RR
1631	140403	0	ONBG	E	Bongo 83/80	IOD	32-54.57N	122-08.79W	g	CNTL07RR
2309	140403	0	ONVT	B	Pairovet 83/70	IOD	33-14.71N	121-26.59W	g	CNTL07RR
2312	140403	0	ONVT	E	Pairovet 83/70	IOD	33-14.71N	121-26.59W	g	CNTL07RR
2337	140403	0	ONBG	B	Bongo 83/70	IOD	33-14.44N	121-27.01W	g	CNTL07RR
0000	150403	0	ONBG	E	Bongo 83/70	IOD	33-14.24N	121-27.53W	g	CNTL07RR

#GMT #TIME #-----	DDMMYY DATE -----	SAMP TZ ---	B CODE	SAMPLE E IDENTIFIER	DISP CODE	LATITUDE	LONGITUDE	p c	CRUISE LEG-SHIP
0530	150403	0	ONVT	B Pairovet 83/60	IOD	33-34.83N	120-45.09W	g	CNTL07RR
0535	150403	0	ONVT	E Pairovet 83/60	IOD	33-34.83N	120-45.09W	g	CNTL07RR
0600	150403	0	ONBG	B Bongo 83/60	IOD	33-34.83N	120-45.45W	g	CNTL07RR
0630	150403	0	ONBG	E Bongo 83/60	IOD	33-34.51N	120-46.37W	g	CNTL07RR
0941	150403	0	ONVT	B Pairovet 83/55	IOD	33-44.67N	120-24.61W	g	CNTL07RR
0945	150403	0	ONVT	E Pairovet 83/55	IOD	33-44.67N	120-24.62W	g	CNTL07RR
1011	150403	0	ONBG	B Bongo 83/55	IOD	33-44.10N	120-25.35W	g	CNTL07RR
1035	150403	0	ONBG	E Bongo 83/55	IOD	33-43.77N	120-26.00W	g	CNTL07RR
1258	150403	0	ONVT	B Pairovet 83-51	IOD	33-52.69N	120-07.98W	g	CNTL07RR
1302	150403	0	ONVT	E Pairovet 83-51	IOD	33-52.69N	120-07.98W	g	CNTL07RR
1329	150403	0	ONBG	B Bongo 83-51	IOD	33-52.77N	120-08.28W	g	CNTL07RR
1340	150403	0	ONBG	E Bongo 83-51	IOD	33-52.86N	120-08.52W	g	CNTL07RR
2013	150403	0	ONVT	B Pairovet 83/42	IOD	34-10.72N	119-30.49W	g	CNTL07RR
2018	150403	0	ONVT	E Pairovet 83/42	IOD	34-10.72N	119-30.49W	g	CNTL07RR
2041	150403	0	ONBG	B Bongo 83/42	IOD	34-10.45N	119-30.96W	g	CNTL07RR
2059	150403	0	ONBG	E Bongo 83/42	IOD	34-10.24N	119-31.41W	g	CNTL07RR
2242	150403	0	ONVT	B Pairovet 83/40.6	IOD	34-13.50N	119-24.71W	g	CNTL07RR
2245	150403	0	ONVT	E Pairovet 83/40.6	IOD	34-13.50N	119-24.71W	g	CNTL07RR
2308	150403	0	ONBG	B Bongo 83/40.6	IOD	34-13.20N	119-24.92W	g	CNTL07RR
2312	150403	0	ONBG	E Bongo 83/40.6	IOD	34-13.13N	119-25.00W	g	CNTL07RR
0349	160403	0	ONVT	B Pairovet 82/46.5	IOD	34-16.49N	119-59.31W	g	CNTL07RR
0356	160403	0	ONVT	E Pairovet 82/46.5	IOD	34-16.49N	119-59.31W	g	CNTL07RR
0438	160403	0	ONBG	B Bongo 82/46.5	IOD	34-16.25N	119-59.52W	g	CNTL07RR
0509	160403	0	ONBG	E Bongo 82/46.5	IOD	34-15.67N	120-00.10W	g	CNTL07RR
0828	160403	0	ONVT	B Pairovet 80/51	IOD	34-26.96N	120-31.40W	g	CNTL07RR
0831	160403	0	ONVT	E Pairovet 80/51	IOD	34-26.96N	120-31.40W	g	CNTL07RR
0858	160403	0	ONBG	B Bongo 80/51	IOD	34-26.87N	120-32.16W	g	CNTL07RR
0905	160403	0	ONBG	E Bongo 80/51	IOD	34-26.84N	120-32.41W	g	CNTL07RR
1142	160403	0	ONVT	B Pairovet 80/55	IOD	34-19.00N	120-48.07W	g	CNTL07RR
1146	160403	0	ONVT	E Pairovet 80/55	IOD	34-19.00N	120-48.07W	g	CNTL07RR
1211	160403	0	ONBG	B Bongo 80/55	IOD	34-19.01N	120-48.48W	g	CNTL07RR
1234	160403	0	ONBG	E Bongo 80/55	IOD	34-19.04N	120-49.04W	g	CNTL07RR
1551	160403	0	ONVT	B Pairovet 80/60	IOD	34-09.00N	121-08.99W	g	CNTL07RR
1557	160403	0	ONVT	E Pairovet 80/60	IOD	34-09.00N	121-08.99W	g	CNTL07RR
1621	160403	0	ONBG	B Bongo 80/60	IOD	34-09.04N	121-08.55W	g	CNTL07RR
1650	160403	0	ONBG	E Bongo 80/60	IOD	34-09.31N	121-07.82W	g	CNTL07RR
2347	160403	0	ONVT	B Pairovet 80/70	IOD	33-48.99N	121-50.62W	g	CNTL07RR
2350	160403	0	ONVT	E Pairovet 80/70	IOD	33-48.99N	121-50.62W	g	CNTL07RR
0015	170403	0	ONBG	B Bongo 80/70	IOD	33-48.65N	121-50.00W	g	CNTL07RR
0038	170403	0	ONBG	E Bongo 80/70	IOD	33-48.31N	121-49.36W	g	CNTL07RR

#GMT #TIME #-----	DDMMYY DATE	SAMP TZ	B CODE	SAMPLE E IDENTIFIER	DISP CODE	LATITUDE	LONGITUDE	p c	CRUISE LEG-SHIP
0529	170403	0	ONBG	B Bongo 80/80	IOD	33-29.47N	122-32.42W	g	CNTL07RR
0556	170403	0	ONBG	E Bongo 80/80	IOD	33-30.10N	122-32.97W	g	CNTL07RR
1143	170403	0	ONBG	B Bongo 80/90	IOD	33-09.10N	123-13.91W	g	CNTL07RR
1206	170403	0	ONBG	E Bongo 80/90	IOD	33-09.20N	123-14.59W	g	CNTL07RR
1550	170403	0	ONBG	B Bongo 80/100	IOD	32-49.11N	123-54.54W	g	CNTL07RR
1618	170403	0	ONBG	E Bongo 80/100	IOD	32-49.40N	123-54.83W	g	CNTL07RR
0023	180403	0	ONBG	B Bongo 77/100	IOD	33-23.59N	124-19.87W	g	CNTL07RR
0047	180403	0	ONBG	E Bongo 77/100	IOD	33-23.89N	124-20.35W	g	CNTL07RR
0602	180403	0	ONBG	B Bongo 77/90	IOD	33-43.49N	123-38.16W	g	CNTL07RR
0629	180403	0	ONBG	E Bongo 77/90	IOD	33-43.86N	123-38.56W	g	CNTL07RR
1147	180403	0	ONBG	B Bongo 77/80	IOD	34-03.47N	122-56.79W	g	CNTL07RR
1211	180403	0	ONBG	E Bongo 77/80	IOD	34-03.84N	122-57.04W	g	CNTL07RR
1604	180403	0	ONVT	B Pairovet 77/70	IOD	34-23.29N	122-14.78W	g	CNTL07RR
1610	180403	0	ONVT	E Pairovet 77/70	IOD	34-23.29N	122-14.78W	g	CNTL07RR
1653	180403	0	ONBG	B Bongo 77/70	IOD	34-23.40N	122-14.95W	g	CNTL07RR
1720	180403	0	ONBG	E Bongo 77/70	IOD	34-23.67N	122-15.56W	g	CNTL07RR
0030	190403	0	ONVT	B Pairovet 77/60	IOD	34-43.24N	121-32.94W	g	CNTL07RR
0033	190403	0	ONVT	E Pairovet 77/60	IOD	34-43.24N	121-32.95W	g	CNTL07RR
0523	190403	0	ONVT	B Pairovet 77/55	IOD	34-53.33N	121-11.84W	g	CNTL07RR
0529	190403	0	ONVT	E Pairovet 77/55	IOD	34-53.33N	121-11.84W	g	CNTL07RR
0550	190403	0	ONBG	B Bongo 77/55	IOD	34-53.51N	121-12.17W	g	CNTL07RR
0614	190403	0	ONBG	E Bongo 77/55	IOD	34-53.92N	121-12.81W	g	CNTL07RR
0945	190403	0	ONVT	B Pairovet 77/51	IOD	35-01.29N	120-55.10W	g	CNTL07RR
0950	190403	0	ONVT	E Pairovet 77/51	IOD	35-01.29N	120-55.10W	g	CNTL07RR
0032	190403	0	ONBG	B Bongo 77/51	IOD	34-43.24N	121-32.95W	g	CNTL07RR
1054	190403	0	ONBG	E Bongo 77/51	IOD	35-01.82N	120-56.07W	g	CNTL07RR
1226	190403	0	ONVT	B Pairovet 77-49	IOD	35-05.29N	120-46.60W	g	CNTL07RR
1230	190403	0	ONVT	E Pairovet 77-49	IOD	35-05.30N	120-46.60W	g	CNTL07RR
1306	190403	0	ONBG	B Bongo 77-49	IOD	35-05.52N	120-46.79W	g	CNTL07RR
1312	190403	0	ONBG	E Bongo 77-49	IOD	35-05.60N	120-46.88W	g	CNTL07RR
1725	190403	0	ONBG	B Bongo 77/51	IOD	35-01.30N	120-55.05W	g	CNTL07RR
1753	190403	0	ONBG	E Bongo 77/51	IOD	35-01.45N	120-55.53W	g	CNTL07RR
2254	190403	0	ONBG	B Bongo 77/55	IOD	34-53.30N	121-12.01W	g	CNTL07RR
2316	190403	0	ONBG	E Bongo 77/55	IOD	34-53.31N	121-12.62W	g	CNTL07RR
0335	200403	0	ONBG	B Bongo 77/60	IOD	34-43.20N	121-33.06W	g	CNTL07RR
0400	200403	0	ONBG	E Bongo 77/60	IOD	34-43.26N	121-33.48W	g	CNTL07RR
1003	200403	0	ONBG	B Bongo 77/70	IOD	34-23.32N	122-14.89W	g	CNTL07RR
1026	200403	0	ONBG	E Bongo 77/70	IOD	34-23.69N	122-15.39W	g	CNTL07RR
1647	200403	0	ONBG	B Bongo 77/80	IOD	34-03.29N	122-56.49W	g	CNTL07RR
1714	200403	0	ONBG	E Bongo 77/80	IOD	34-03.68N	122-56.85W	g	CNTL07RR
2328	200403	0	ONBG	B Bongo 77/90	IOD	33-43.32N	123-38.11W	g	CNTL07RR
2349	200403	0	ONBG	E Bongo 77/90	IOD	33-43.36N	123-38.61W	g	CNTL07RR

#GMT #TIME #	DDMMYY DATE	SAMP TZ	B CODE	SAMPLE E IDENTIFIER	DISP CODE	LATITUDE	LONGITUDE	p c	CRUISE LEG-SHIP
0551	210403	0	ONBG	B Bongo 77/100	IOD	33-23.29N	124-19.44W	g	CNTL07RR
0621	210403	0	ONBG	E Bongo 77/100	IOD	33-23.14N	124-20.33W	g	CNTL07RR
1236	210403	0	ONBG	B Bongo 80/100	IOD	32-48.93N	123-54.43W	g	CNTL07RR
1301	210403	0	ONBG	E Bongo 80/100	IOD	32-49.02N	123-54.74W	g	CNTL07RR
1855	210403	0	ONBG	B Bongo 83/100	IOD	32-14.61N	123-29.47W	g	CNTL07RR
1920	210403	0	ONBG	E Bongo 83/100	IOD	32-14.52N	123-29.88W	g	CNTL07RR
0140	220403	0	ONBG	B Bongo 87/100	IOD	31-39.36N	123-04.13W	g	CNTL07RR
0202	220403	0	ONBG	E Bongo 87/100	IOD	31-39.46N	123-04.47W	g	CNTL07RR
0800	220403	0	ONBG	B Bongo 90/100	IOD	31-05.12N	122-39.74W	g	CNTL07RR
0822	220403	0	ONBG	E Bong 90/100	IOD	31-05.31N	122-40.18W	g	CNTL07RR
1443	220403	0	ONBG	B Bongo 93/100	IOD	30-30.85N	122-15.49W	g	CNTL07RR
1506	220403	0	ONBG	E Bongo 93/100	IOD	30-31.39N	122-15.68W	g	CNTL07RR
2106	220403	0	ONBG	B Bongo 93/90	IOD	30-50.80N	121-35.45W	g	CNTL07RR
2129	220403	0	ONBG	E Bongo 93/90	IOD	30-51.20N	121-35.90W	g	CNTL07RR
0444	230403	0	ONBG	B Bongo 93/8	IOD	31-10.81N	120-55.15W	g	CNTL07RR
0513	230403	0	ONBG	E Bongo 93/8	IOD	31-10.92N	120-55.76W	g	CNTL07RR
1135	230403	0	ONBG	B Bongo 93/70	IOD	31-30.83N	120-14.81W	g	CNTL07RR
1157	230403	0	ONBG	E Bongo 93/70	IOD	31-31.03N	120-15.09W	g	CNTL07RR
1756	230403	0	ONBG	B Bongo 93/60	IOD	31-50.78N	119-34.34W	g	CNTL07RR
1823	230403	0	ONBG	E Bongo 93/60	IOD	31-51.11N	119-34.89W	g	CNTL07RR
2135	230403	0	ONBG	B Bongo 93/55	IOD	32-00.85N	119-14.08W	g	CNTL07RR
2156	230403	0	ONBG	E Bongo 93/55	IOD	32-01.16N	119-14.48W	g	CNTL07RR
0404	160403	0	ONVT	B Verbose 82/46.5	IOD	34-16.47N	119-59.30W	g	CNTL07RR
0417	160403	0	ONVT	E Verbose 82/46.5 200M	IOD	34-16.48N	119-59.31W	g	CNTL07RR
2345	170403	0	ONVT	B Verb 150	IOD	33-23.30N	124-19.40W	g	CNTL07RR
2356	170403	0	ONVT	E Verb 150	IOD	33-23.30N	124-19.39W	g	CNTL07RR
0527	180403	0	ONVT	B Verb 150 77/90	IOD	33-43.28N	123-38.02W	g	CNTL07RR
0538	180403	0	ONVT	E Verb 150 77/90	IOD	33-43.28N	123-38.02W	g	CNTL07RR
1108	180403	0	ONVT	B Verb 150 77/80	IOD	34-03.30N	122-56.47W	g	CNTL07RR
1119	180403	0	ONVT	E Verb 150 77/80	IOD	34-03.30N	122-56.49W	g	CNTL07RR
1611	180403	0	ONVT	B Verb 150 77/70	IOD	34-23.29N	122-14.79W	g	CNTL07RR
1626	180403	0	ONVT	E Verb-150 77/70	IOD	34-23.29N	122-14.79W	g	CNTL07RR
0955	190403	0	ONVT	B Verb 150 77/51	IOD	35-01.29N	120-55.10W	g	CNTL07RR
1006	190403	0	ONVT	E Verb 150 77/51	IOD	35-01.29N	120-55.10W	g	CNTL07RR
1236	190403	0	ONVT	B Verb 15	IOD	35-05.30N	120-46.60W	g	CNTL07RR
1240	190403	0	ONVT	E Verb 15	IOD	35-05.30N	120-46.60W	g	CNTL07RR
2223	190403	0	ONVT	B Verb 15	IOD	34-53.30N	121-11.90W	g	CNTL07RR
2234	190403	0	ONVT	E Verb 15	IOD	34-53.30N	121-11.90W	g	CNTL07RR
0318	200403	0	ONVT	B Verb 77/60	IOD	34-43.30N	121-32.92W	g	CNTL07RR
0328	200403	0	ONVT	E Verb 77/60	IOD	34-43.22N	121-32.94W	g	CNTL07RR

#GMT	DDMMYY	SAMP	B	SAMPLE	DISP				p	CRUISE
#TIME	DATE	TZ	CODE	E IDENTIFIER	CODE	LATITUDE	LONGITUDE		c	LEG-SHIP
#-----	---	---	-----	-----	-----	-----	-----	-----	---	-----
#*** Surface Nets ***										
2038	040403	0	SNNU	B Manta 93/26.7	IOD	32-57.30N	117-18.32W	g		CNTL07RR
2052	040403	0	SNNU	E Manta 93/26.7	IOD	32-57.06N	117-18.62W	g		CNTL07RR
0041	050403	0	SNNU	B Manta 93/28	IOD	32-54.79N	117-23.71W	g		CNTL07RR
0055	050403	0	SNNU	E Manta 93/28	IOD	32-54.84N	117-24.01W	g		CNTL07RR
0351	050403	0	SNNU	B Manta 93/30	IOD	32-50.81N	117-31.87W	g		CNTL07RR
0406	050403	0	SNNU	E Manta 93/30	IOD	32-50.85N	117-32.19W	g		CNTL07RR
0820	050403	0	SNNU	B Manta 93/35	IOD	32-40.72N	117-52.36W	g		CNTL07RR
0836	050403	0	SNNU	E Manta 93/35	IOD	32-40.48N	117-52.75W	g		CNTL07RR
1309	050403	0	SNNU	B Manta 93-40	IOD	32-30.74N	118-12.82W	g		CNTL07RR
1322	050403	0	SNNU	E Manta 93-40	IOD	32-30.80N	118-13.06W	g		CNTL07RR
1602	050403	0	SNNU	B Manta 93/45	IOD	32-20.70N	118-33.29W	g		CNTL07RR
1617	050403	0	SNNU	E Manta 93/45	IOD	32-20.65N	118-33.55W	g		CNTL07RR
2335	050403	0	SNNU	B Manta 93/50	IOD	32-10.79N	118-53.61W	g		CNTL07RR
2352	050403	0	SNNU	E Manta 93/50	IOD	32-10.84N	118-53.87W	g		CNTL07RR
0355	060403	0	SNNU	B Manta 93/55	IOD	32-00.75N	119-14.00W	g		CNTL07RR
0413	060403	0	SNNU	E Manta 93/55	IOD	32-00.84N	119-14.34W	g		CNTL07RR
0810	060403	0	SNNU	B Manta 93/60	IOD	31-50.67N	119-34.38W	g		CNTL07RR
0827	060403	0	SNNU	E Manta 93/60	IOD	31-50.64N	119-34.75W	g		CNTL07RR
1350	060403	0	SNNU	Manta 93-70	IOD	31-30.72N	120-14.78W	g		CNTL07RR
2005	060403	0	SNNU	B Manta 93/800	IOD	31-11.23N	120-55.49W	g		CNTL07RR
2020	060403	0	SNNU	E Manta 93/800	IOD	31-11.54N	120-55.89W	g		CNTL07RR
0222	070403	0	SNNU	B Manta 93/900	IOD	30-50.87N	121-35.46W	g		CNTL07RR
0238	070403	0	SNNU	E Manta 93/900	IOD	30-51.27N	121-35.80W	g		CNTL07RR
0750	070403	0	SNNU	B Manta 93/10	IOD	30-30.85N	122-15.39W	g		CNTL07RR
0808	070403	0	SNNU	E Manta 93/10	IOD	30-31.17N	122-15.33W	g		CNTL07RR
1318	070403	0	SNNU	B Manta 93/110	IOD	30-10.85N	122-55.41W	g		CNTL07RR
1333	070403	0	SNNU	E Manta 93/110	IOD	30-11.05N	122-55.47W	g		CNTL07RR
1935	070403	0	SNNU	B Manta 93/120	IOD	29-50.84N	123-35.19W	g		CNTL07RR
1953	070403	0	SNNU	E Manta 93/120	IOD	29-51.16N	123-35.32W	g		CNTL07RR
0129	080403	0	SNNU	B Manta 90/120	IOD	30-25.09N	123-59.97W	g		CNTL07RR
0144	080403	0	SNNU	E Manta 90/120	IOD	30-25.38N	123-59.95W	g		CNTL07RR
0820	080403	0	SNNU	B Manta 90/110	IOD	30-45.18N	123-20.06W	g		CNTL07RR
0836	080403	0	SNNU	E Manta 90/110	IOD	30-45.34N	123-20.47W	g		CNTL07RR
1340	080403	0	SNNU	B Manta 90-100	IOD	31-05.13N	122-39.72W	g		CNTL07RR
1356	080403	0	SNNU	E Manta 90-100	IOD	31-05.47N	122-39.91W	g		CNTL07RR
2116	080403	0	SNNU	B Manta 90/90	IOD	31-25.26N	121-59.46W	g		CNTL07RR
2134	080403	0	SNNU	E Manta 90/90	IOD	31-25.53N	121-59.78W	g		CNTL07RR
0233	090403	0	SNNU	B Manta 90/80	IOD	31-45.11N	121-18.92W	g		CNTL07RR
0249	090403	0	SNNU	E Manta 90/80	IOD	31-45.41N	121-19.02W	g		CNTL07RR

#GMT #TIME #-----	DDMMYY DATE -----	SAMP TZ ---	B CODE	SAMPLE E IDENTIFIER	DISP CODE	LATITUDE	LONGITUDE	p c	CRUISE LEG-SHIP
0755	090403	0	SNNU	B Manta 90/70	IOD	32-05.11N	120-38.38W	g	CNTL07RR
0811	090403	0	SNNU	E Manta 90/70	IOD	32-05.10N	120-38.73W	g	CNTL07RR
1358	090403	0	SNNU	B Manta 90-600	IOD	32-25.14N	119-57.86W	g	CNTL07RR
1402	090403	0	SNNU	E Manta 90-600	IOD	32-25.16N	119-57.96W	g	CNTL07RR
2034	090403	0	SNNU	B Manta 90/53	IOD	32-39.12N	119-28.95W	g	CNTL07RR
2050	090403	0	SNNU	E Manta 90/53	IOD	32-39.06N	119-29.26W	g	CNTL07RR
0127	100403	0	SNNU	B Manta 90/45	IOD	32-55.10N	118-56.13W	g	CNTL07RR
0142	100403	0	SNNU	E Manta 90/45	IOD	32-55.15N	118-56.57W	g	CNTL07RR
0700	100403	0	SNNU	B Manta 90/37	IOD	33-11.12N	118-23.20W	g	CNTL07RR
0715	100403	0	SNNU	E Manta 90/37	IOD	33-11.11N	118-23.51W	g	CNTL07RR
0956	100403	0	SNNU	B Manta 90/35	IOD	33-15.06N	118-15.00W	g	CNTL07RR
1012	100403	0	SNNU	E Manta 90/35	IOD	33-14.79N	118-15.24W	g	CNTL07RR
1350	100403	0	SNNU	B Manta 90-30	IOD	33-25.10N	117-54.31W	g	CNTL07RR
1405	100403	0	SNNU	E Manta 90-30	IOD	33-24.86N	117-54.09W	g	CNTL07RR
1609	100403	0	SNNU	Manta 90/28	IOD	33-29.10N	117-46.13W	g	CNTL07RR
0133	110403	0	SNNU	B Manta 87/33	IOD	33-53.45N	118-29.40W	g	CNTL07RR
0149	110403	0	SNNU	E Manta 87/33	IOD	33-53.36N	118-29.80W	g	CNTL07RR
0416	110403	0	SNNU	B Manta 87/35	IOD	33-49.38N	118-37.36W	g	CNTL07RR
0434	110403	0	SNNU	E Manta 87/35	IOD	33-49.22N	118-37.77W	g	CNTL07RR
0829	110403	0	SNNU	B Manta 87/40	IOD	33-39.40N	118-58.44W	g	CNTL07RR
0844	110403	0	SNNU	E Manta 87/40	IOD	33-39.40N	118-58.97W	g	CNTL07RR
1214	110403	0	SNNU	B Manta net	IOD	33-29.39N	119-19.08W	g	CNTL07RR
1229	110403	0	SNNU	E Manta net	IOD	33-29.47N	119-19.35W	g	CNTL07RR
1533	110403	0	SNNU	B Manta Net	IOD	33-19.39N	119-39.85W	g	CNTL07RR
1550	110403	0	SNNU	E Manta 87/50	IOD	33-19.54N	119-40.28W	g	CNTL07RR
0607	120403	0	SNNU	B Manta 87/55	IOD	33-07.60N	120-01.57W	g	CNTL07RR
0623	120403	0	SNNU	E Manta 87/55	IOD	33-07.36N	120-01.77W	g	CNTL07RR
0952	120403	0	SNNU	B Manta 87/60	IOD	32-59.30N	120-20.82W	g	CNTL07RR
1007	120403	0	SNNU	E Manta 87/60	IOD	32-58.92N	120-20.22W	g	CNTL07RR
1420	120403	0	SNNU	B Manta 87-70	IOD	32-39.38N	121-01.93W	g	CNTL07RR
1436	120403	0	SNNU	E Manta 87-70	IOD	32-39.20N	121-02.17W	g	CNTL07RR
2330	120403	0	SNNU	B Manta 87/80	IOD	32-19.40N	121-42.86W	g	CNTL07RR
2345	120403	0	SNNU	E Manta 87/80	IOD	32-19.07N	121-42.74W	g	CNTL07RR
0448	130403	0	SNNU	B Manta 87/90	IOD	31-59.40N	122-23.56W	g	CNTL07RR
0507	130403	0	SNNU	E Manta 87/90	IOD	31-59.05N	122-23.73W	g	CNTL07RR
1122	130403	0	SNNU	B Manta 87/100	IOD	31-39.43N	123-04.10W	g	CNTL07RR
1137	130403	0	SNNU	E Manta 87/100	IOD	31-39.20N	123-03.88W	g	CNTL07RR
1612	130403	0	SNNU	B Manta 87/110	IOD	31-19.39N	123-44.48W	g	CNTL07RR
1628	130403	0	SNNU	E Manta 87/110	IOD	31-19.33N	123-44.62W	g	CNTL07RR

#GMT #TIME #-----	DDMMYY DATE	TZ	SAMP CODE	B E	SAMPLE IDENTIFIER	DISP CODE	LATITUDE	LONGITUDE	p c	CRUISE LEG-SHIP
0002	140403	0	SNNU	B	Manta 83/110	IOD	31-54.73N	124-10.22W	g	CNTL07RR
0018	140403	0	SNNU	E	Manta 83/110	IOD	31-54.94N	124-10.63W	g	CNTL07RR
0523	140403	0	SNNU	B	Manta 83/100	IOD	32-14.72N	123-29.63W	g	CNTL07RR
0538	140403	0	SNNU	E	Manta 83.100	IOD	32-14.84N	123-29.79W	g	CNTL07RR
1134	140403	0	SNNU	B	Manta 83/90	IOD	32-34.67N	122-48.75W	g	CNTL07RR
1151	140403	0	SNNU	E	Manta 83/90	IOD	32-34.57N	122-48.94W	g	CNTL07RR
1545	140403	0	SNNU	B	Manta 83/80	IOD	32-54.69N	122-07.70W	g	CNTL07RR
1602	140403	0	SNNU	E	Manta 83/80	IOD	32-54.67N	122-08.03W	g	CNTL07RR
2317	140403	0	SNNU	B	Manta 83/70	IOD	33-14.69N	121-26.63W	g	CNTL07RR
2332	140403	0	SNNU	E	Manta 83/70	IOD	33-14.50N	121-26.88W	g	CNTL07RR
0539	150403	0	SNNU	B	Manta 83/60	IOD	33-34.83N	120-45.09W	g	CNTL07RR
0556	150403	0	SNNU	E	Manta 83/60	IOD	33-34.84N	120-45.38W	g	CNTL07RR
0949	150403	0	SNNU	B	Manta 83/55	IOD	33-44.64N	120-24.60W	g	CNTL07RR
1006	150403	0	SNNU	E	Manta 83/55	IOD	33-44.23N	120-25.14W	g	CNTL07RR
1306	150403	0	SNNU	B	Manta 83-51	IOD	33-52.69N	120-07.98W	g	CNTL07RR
1322	150403	0	SNNU	E	Manta 83-51	IOD	33-52.74N	120-08.17W	g	CNTL07RR
2021	150403	0	SNNU	B	Manta 83/42	IOD	34-10.72N	119-30.50W	g	CNTL07RR
2037	150403	0	SNNU	E	Manta 83/42	IOD	34-10.51N	119-30.86W	g	CNTL07RR
2248	150403	0	SNNU	B	Manta 83/40.6	IOD	34-13.49N	119-24.71W	g	CNTL07RR
2304	150403	0	SNNU	E	Manta 83/40.6	IOD	34-13.25N	119-24.91W	g	CNTL07RR
0421	160403	0	SNNU	B	Manta 82/46.5	IOD	34-16.48N	119-59.31W	g	CNTL07RR
0438	160403	0	SNNU	E	Manta 82/46.5	IOD	34-16.25N	119-59.52W	g	CNTL07RR
0838	160403	0	SNNU	B	Manta 80/51	IOD	34-26.95N	120-31.43W	g	CNTL07RR
0853	160403	0	SNNU	E	Manta 80/51	IOD	34-26.89N	120-31.95W	g	CNTL07RR
1151	160403	0	SNNU	B	Manta 80/55	IOD	34-19.00N	120-48.07W	g	CNTL07RR
1207	160403	0	SNNU	E	Manta 80/55	IOD	34-19.00N	120-48.38W	g	CNTL07RR
1601	160403	0	SNNU	B	Manta 80/60	IOD	34-09.00N	121-08.99W	g	CNTL07RR
1617	160403	0	SNNU	E	Manta 80/60	IOD	34-09.03N	121-08.66W	g	CNTL07RR
2355	160403	0	SNNU	B	Manta 80/70	IOD	33-48.98N	121-50.60W	g	CNTL07RR
0011	170403	0	SNNU	E	Manta 80/70	IOD	33-48.71N	121-50.11W	g	CNTL07RR
0509	170403	0	SNNU	B	Manta 80/80	IOD	33-29.02N	122-31.97W	g	CNTL07RR
0525	170403	0	SNNU	E	Manta 80/80	IOD	33-29.37N	122-32.32W	g	CNTL07RR
1122	170403	0	SNNU	B	Manta 80/90	IOD	33-08.99N	123-13.32W	g	CNTL07RR
1139	170403	0	SNNU	E	Manta 80/90	IOD	33-09.09N	123-13.80W	g	CNTL07RR
1532	170403	0	SNNU	B	Manta 80/100	IOD	32-48.97N	123-54.41W	g	CNTL07RR
1547	170403	0	SNNU	E	Manta 80/100	IOD	32-49.08N	123-54.52W	g	CNTL07RR
0003	180403	0	SNNU	B	Manta 77/100	IOD	33-23.29N	124-19.43W	g	CNTL07RR
0019	180403	0	SNNU	E	Manta 77/100	IOD	33-23.53N	124-19.78W	g	CNTL07RR
0542	180403	0	SNNU	B	Manta 77/90	IOD	33-43.27N	123-38.01W	g	CNTL07RR
0558	180403	0	SNNU	E	Manta 77/90	IOD	33-43.43N	123-38.11W	g	CNTL07RR

#GMT	DDMMYY	SAMP	B	SAMPLE	DISP				p	CRUISE
#TIME	DATE	TZ	CODE	E IDENTIFIER	CODE	LATITUDE	LONGITUDE		c	LEG-SHIP
#-----	-----	---	-----	-----	-----	-----	-----	-----	-	-----
1126	180403	0	SNNU	B Manta 77/80	IOD	34-03.28N	122-56.49W		g	CNTL07RR
1142	180403	0	SNNU	E Manta 77/80	IOD	34-03.41N	122-56.69W		g	CNTL07RR
1632	180403	0	SNNU	B Manta 77/70	IOD	34-23.29N	122-14.77W		g	CNTL07RR
1647	180403	0	SNNU	E Manta 77/70	IOD	34-23.43N	122-14.89W		g	CNTL07RR
0038	190403	0	SNNU	B Manta 77/60	IOD	34-43.20N	121-32.97W		g	CNTL07RR
0053	190403	0	SNNU	E Manta 77/60	IOD	34-43.12N	121-33.15W		g	CNTL07RR
0532	190403	0	SNNU	B Manta 77/55	IOD	34-53.33N	121-11.84W		g	CNTL07RR
0546	190403	0	SNNU	E Manat 77/55	IOD	34-53.47N	121-12.10W		g	CNTL07RR
1012	190403	0	SNNU	B Manta 77/51	IOD	35-01.30N	120-55.11W		g	CNTL07RR
1027	190403	0	SNNU	E Manta 77/51	IOD	35-01.53N	120-55.43W		g	CNTL07RR
1245	190403	0	SNNU	B Manta 77-49	IOD	35-05.30N	120-46.60W		g	CNTL07RR
1302	190403	0	SNNU	E Manta 77-49	IOD	35-05.51N	120-46.79W		g	CNTL07RR

#*** Surface Samples ***

0706	050403	0	SSXX	B Bio pump 93/35	GRD	32-40.78N	117-52.31W		g	CNTL07RR
0729	050403	0	SSXX	E Bio pump 93/35	GRD	32-40.76N	117-52.32W		g	CNTL07RR
1200	050403	0	SSXX	B Bio Pump 93-40	GRD	32-30.75N	118-12.80W		g	CNTL07RR
1209	050403	0	SSXX	E Bio Pump 93-40	GRD	32-30.76N	118-12.79W		g	CNTL07RR
0657	060403	0	SSXX	B Bio pump 93/60	GRD	31-50.73N	119-34.24W		g	CNTL07RR
0715	060403	0	SSXX	E Bio pump 93/60	GRD	31-50.72N	119-34.25W		g	CNTL07RR
0717	080403	0	SSXX	B Bio Pump 90/110	GRD	30-45.07N	123-19.95W		g	CNTL07RR
0735	080403	0	SSXX	E Bio pump 90/110	GRD	30-45.07N	123-19.95W		g	CNTL07RR
0650	090403	0	SSXX	B Bio Pump 90/70	GRD	32-05.09N	120-38.35W		g	CNTL07RR
0708	090403	0	SSXX	E Bio Pump 90/70	GRD	32-05.09N	120-38.35W		g	CNTL07RR
0554	100403	0	SSXX	B Bio Pump 90/37	GRD	33-11.12N	118-23.19W		g	CNTL07RR
0616	100403	0	SSXX	E Bio Pump 90/37	GRD	33-11.12N	118-23.19W		g	CNTL07RR
0902	100403	0	SSXX	B Bio pump 90/35	GRD	33-15.09N	118-14.97W		g	CNTL07RR
0928	100403	0	SSXX	E Bio pump 90/35	GRD	33-15.09N	118-14.97W		g	CNTL07RR
0507	110403	0	SSXX	B Bio Pump 87/35	GRD	33-48.72N	118-38.36W		g	CNTL07RR
0521	110403	0	SSXX	E Bio Pump 87/35	GRD	33-48.72N	118-38.37W		g	CNTL07RR
0715	110403	0	SSXX	B Bio Pump 87/40	GRD	33-39.40N	118-58.36W		g	CNTL07RR
0741	110403	0	SSXX	E Bio Pump 87/40	GRD	33-39.40N	118-58.37W		g	CNTL07RR
1110	110403	0	SSXX	B Bio pump 87/40	GRD	33-29.39N	119-19.07W		g	CNTL07RR
1120	110403	0	SSXX	E Bio pump 87/40	GRD	33-29.39N	119-19.07W		g	CNTL07RR
0845	120403	0	SSXX	B Bio pump 87/60	GRD	32-59.40N	120-20.93W		g	CNTL07RR
0856	120403	0	SSXX	E Bio pump 87/60	GRD	32-59.40N	120-20.94W		g	CNTL07RR
1015	130403	0	SSXX	B Bio pump 87/100	GRD	31-39.39N	123-04.18W		g	CNTL07RR
1035	130403	0	SSXX	E Bio pump 87/100	GRD	31-39.39N	123-04.18W		g	CNTL07RR

#GMT #TIME #-----	DDMMYY DATE -----	TZ	SAMP CODE	B E	SAMPLE IDENTIFIER	DISP CODE	LATITUDE	LONGITUDE	p c	CRUISE LEG-SHIP
0625	140403	0	SSXX	B	Bio Pump 83/100	GRD	32-15.51N	123-29.72W	g	CNTL07RR
0650	140403	0	SSXX	E	Bio Pump 83/100	GRD	32-15.51N	123-29.72W	g	CNTL07RR
1033	140403	0	SSXX	B	Bio pump 83/90	GRD	32-34.73N	122-48.65W	g	CNTL07RR
1047	140403	0	SSXX	E	Bio pump 83/90	GRD	32-34.72N	122-48.66W	g	CNTL07RR
0505	150403	0	SSXX	B	Bio Pump 83/60	GRD	33-34.83N	120-45.09W	g	CNTL07RR
0516	150403	0	SSXX	E	Bio Pump 83/60	GRD	33-34.83N	120-45.09W	g	CNTL07RR
0834	150403	0	SSXX	B	Bio pump 83/55	GRD	33-44.65N	120-24.62W	g	CNTL07RR
0849	150403	0	SSXX	E	Bio pump 83/55	GRD	33-44.68N	120-24.60W	g	CNTL07RR
0404	160403	0	SSXX	B	Bio Pump 82/46.5	GRD	34-15.67N	120-00.11W	g	CNTL07RR
0417	160403	0	SSXX	E	Bio Pump 82/46.5	GRD	33-44.68N	120-24.60W	g	CNTL07RR
0757	160403	0	SSXX	B	Bio pump 80/51	GRD	34-26.96N	120-31.40W	g	CNTL07RR
0810	160403	0	SSXX	E	Bio pump 80/51	GRD	34-26.96N	120-31.40W	g	CNTL07RR
1044	160403	0	SSXX	B	Bio Pump 80/55	GRD	34-19.00N	120-48.06W	g	CNTL07RR
1057	160403	0	SSXX	E	Bio pump 80/55	GRD	34-19.00N	120-48.07W	g	CNTL07RR
0610	170403	0	SSXX	B	Bio Pump 80/80	GRD	33-30.10N	122-32.97W	g	CNTL07RR
0622	170403	0	SSXX	E	Bio Pump 80/80	GRD	33-30.10N	122-32.97W	g	CNTL07RR
0637	170403	0	SSXX	B	Bio Pump 80/80	GRD	33-30.10N	122-32.97W	g	CNTL07RR
0656	170403	0	SSXX	E	Bio Pump 80/80	GRD	33-30.10N	122-32.97W	g	CNTL07RR
1040	170403	0	SSXX	B	Bio Pump 80/90	GRD	33-09.00N	123-13.31W	g	CNTL07RR
1055	170403	0	SSXX	E	Bio pump 80/90	GRD	33-09.00N	123-13.31W	g	CNTL07RR
0457	180403	0	SSXX	B	Bio Pump 77/90	GRD	33-43.28N	123-38.01W	g	CNTL07RR
0510	180403	0	SSXX	E	Bio Pump 77/90	GRD	33-43.28N	123-38.01W	g	CNTL07RR
1012	180403	0	SSXX	B	Bio pump 77/80	GRD	34-03.30N	122-56.49W	g	CNTL07RR
1031	180403	0	SSXX	E	Bio pump 77/80	GRD	34-03.30N	122-56.48W	g	CNTL07RR
0620	190403	0	SSXX	B	Bio Pump 77/55	GRD	34-53.92N	121-12.87W	g	CNTL07RR
0633	190403	0	SSXX	E	Bio Pump 77/55	GRD	33-48.89N	123-27.41W	g	CNTL07RR
0732	190403	0	SSXX	B	Bio pump 77/51	GRD	34-43.24N	121-32.95W	g	CNTL07RR
0850	190403	0	SSXX	E	Bio pump 77/51	GRD	35-01.29N	120-55.10W	g	CNTL07RR
0553	200403	0	SSXX	B	Bio Pump 77/65	GRD	34-33.27N	121-53.90W	g	CNTL07RR
0602	200403	0	SSXX	E	Bio Pump 77/65	GRD	34-33.28N	121-53.88W	g	CNTL07RR
0838	200403	0	SSXX	B	Bio pump 77/70	GRD	34-23.28N	122-14.81W	g	CNTL07RR
0855	200403	0	SSXX	E	Bio pump 77/70	GRD	34-23.28N	122-14.82W	g	CNTL07RR
0827	210403	0	SSXX	B	Bio Pump 78.4/100	GRD	33-05.58N	124-06.53W	g	CNTL07RR
0845	210403	0	SSXX	E	Bio Pump 78.4/100	GRD	33-05.59N	124-06.52W	g	CNTL07RR
1843	210403	0	SSXX	B	Bio Pump 90/100	GRD	32-14.61N	123-29.47W	g	CNTL07RR
0701	220403	0	SSXX	E	Bio Pump 90/100	GRD	31-05.12N	122-39.71W	g	CNTL07RR
1040	220403	0	SSXX	B	Bio pump 91.7/100	GRD	30-47.39N	122-27.18W	g	CNTL07RR
1055	220403	0	SSXX	E	Bio pump 91.7/100	GRD	30-47.38N	122-27.19W	g	CNTL07RR
0514	230403	0	SSXX	B	Bio Pump 93/8	GRD	31-10.92N	120-55.76W	g	CNTL07RR
0525	230403	0	SSXX	E	Bio Pump 93/8	GRD	31-10.92N	120-55.77W	g	CNTL07RR

#GMT	DDMMYY	SAMP	B	SAMPLE	DISP				p	CRUISE
#TIME	DATE	TZ	CODE	E IDENTIFIER	CODE	LATITUDE	LONGITUDE		c	LEG-SHIP
#-----	---	---	-----	-----	---	-----	-----	---	---	-----

0725	230403	0	SSXX	B Bio Pump 93/75	GRD	31-20.78N	120-35.02W	g		CNTL07RR
0750	230403	0	SSXX	E Bio pump 93/7	GRD	31-20.78N	120-35.02W	g		CNTL07RR
1011	230403	0	SSXX	B Bio pump 93/7	GRD	31-30.79N	120-14.79W	g		CNTL07RR
1031	230403	0	SSXX	E Bio pump 93/7	GRD	31-30.79N	120-14.80W	g		CNTL07RR

*** Trace Metal Sample went to CalTech ***

0425	080403	0	SSXX	B Trace Metal Fish	SIX	30-30.41N	123-51.12W	g		CNTL07RR
0517	080403	0	SSXX	E Trace Metal Fish	SIX	30-34.86N	123-41.51W	g		CNTL07RR
0135	100403	0	SSXX	B TraceMetalFish90/45	SIX	32-55.14N	118-56.41W	g		CNTL07RR
0300	100403	0	SSXX	E TraceMetalFish90/45	SIX	32-55.99N	118-56.42W	g		CNTL07RR
0208	110403	0	SSXX	Trace Metal Fish	SIX	33-53.11N	118-30.23W	g		CNTL07RR
1856	120403	0	SSXX	B Fish 87/70	SIX	32-38.54N	121-02.81W	g		CNTL07RR
1905	120403	0	SSXX	E Fish 87/70	SIX	32-38.07N	121-03.89W	g		CNTL07RR

*** Expendable Bathythermographs ***

0143	060403	0	BTXP	MK12 # 1	Deep	GDC	32-04.32N	119-05.96W	g	CNTL07RR
0553	060403	0	BTXP	MK12 # 2	Deep	GDC	31-54.68N	119-25.56W	g	CNTL07RR
1021	060403	0	BTXP	MK12 # 4	Deep	GDC	31-43.11N	119-49.78W	g	CNTL07RR
1131	060403	0	BTXP	MK12 # 5	Deep	GDC	31-36.10N	120-03.95W	g	CNTL07RR
2227	060403	0	BTXP	MK12 # 6	Deep	GDC	31-03.63N	121-12.65W	g	CNTL07RR
2238	060403	0	BTXP	MK12 # 7	Deep	GDC	31-02.34N	121-14.75W	g	CNTL07RR
0504	070403	0	BTXP	MK12 # 8	Fast_Deep	GDC	30-40.76N	121-57.21W	g	CNTL07RR
0819	070403	0	BTXP	MK12 # 12	Fast_Deep	GDC	30-31.38N	122-15.44W	g	CNTL07RR
1016	070403	0	BTXP	MK12 # 13	Deep	GDC	30-22.68N	122-31.68W	g	CNTL07RR
1539	070403	0	BTXP	MK12 # 14	Deep	GDC	30-03.27N	123-11.48W	g	CNTL07RR
2211	070403	0	BTXP	MK12 # 15	Deep	GDC	30-04.82N	123-45.28W	g	CNTL07RR
0459	080403	0	BTXP	MK12 # 16	Deep	GDC	30-33.33N	123-44.79W	g	CNTL07RR
1055	080403	0	BTXP	MK12 # 17	Deep	GDC	30-54.72N	123-00.63W	g	CNTL07RR
1555	080403	0	BTXP	MK12 # 18	Deep	GDC	31-13.82N	122-24.08W	g	CNTL07RR
2300	080403	0	BTXP	MK12 # 19	Deep	GDC	31-31.08N	121-49.85W	g	CNTL07RR
0012	090403	0	BTXP	MK12 # 20	Deep	GDC	31-38.35N	121-34.22W	g	CNTL07RR
0403	090403	0	BTXP	MK12 # 21	Deep	GDC	31-49.87N	121-10.92W	g	CNTL07RR
0517	090403	0	BTXP	MK12 # 22	Deep	GDC	31-57.40N	120-55.03W	g	CNTL07RR
0510	110403	0	BTXP	MK12 # 23	Deep	GDC	33-48.72N	118-38.37W	g	CNTL07RR
0724	120403	0	BTXP	MK12 # 24	Deep	GDC	33-04.80N	120-06.34W	g	CNTL07RR
1147	120403	0	BTXP	MK12 # 25	Deep	GDC	32-51.45N	120-32.24W	g	CNTL07RR
1243	120403	0	BTXP	MK12 # 26	Deep	GDC	32-46.30N	120-44.78W	g	CNTL07RR
1926	120403	0	BTXP	MK12 # 27	Deep	GDC	32-36.17N	121-07.70W	g	CNTL07RR
2046	120403	0	BTXP	MK12 # 28	Deep	GDC	32-27.75N	121-24.48W	g	CNTL07RR
0131	130403	0	BTXP	MK12 # 29	Deep	GDC	32-11.64N	121-57.22W	g	CNTL07RR
0236	130403	0	BTXP	MK12 # 30	Deep	GDC	32-05.18N	122-10.32W	g	CNTL07RR
0742	130403	0	BTXP	MK12 # 31	Deep	GDC	31-53.10N	122-35.12W	g	CNTL07RR
0846	130403	0	BTXP	MK12 # 32	Deep	GDC	31-46.93N	122-48.57W	g	CNTL07RR
0906	130403	0	BTXP	MK12 # 33	Fast_Deep	GDC	31-44.97N	122-52.73W	g	CNTL07RR
1253	130403	0	BTXP	MK12 # 34	Deep	GDC	31-35.63N	123-09.72W	g	CNTL07RR
1347	130403	0	BTXP	MK12 # 35	Deep	GDC	31-30.82N	123-20.43W	g	CNTL07RR
0144	140403	0	BTXP	MK12 # 36	Deep	GDC	32-00.49N	124-00.75W	g	CNTL07RR
0246	140403	0	BTXP	MK12 # 37	Deep	GDC	32-06.29N	123-47.41W	g	CNTL07RR
0750	140403	0	BTXP	MK12 # 38	Deep	GDC	32-19.28N	123-22.63W	g	CNTL07RR
0852	140403	0	BTXP	MK12 # 39	Deep	GDC	32-25.16N	123-09.05W	g	CNTL07RR
1255	140403	0	BTXP	MK12 # 40	Deep	GDC	32-37.10N	122-43.81W	g	CNTL07RR
1301	140403	0	BTXP	MK12 # 41	Deep	GDC	32-37.75N	122-42.48W	g	CNTL07RR

#GMT	DDMMYY	SAMP	B	SAMPLE	DISP				p	CRUISE
#TIME	DATE	TZ	CODE	E IDENTIFIER	CODE	LATITUDE	LONGITUDE		c	LEG-SHIP
#										
1359	140403	0	BTXP	MK12 # 42	Deep	GDC	32-44.06N	122-29.99W	g	CNTL07RR
1927	140403	0	BTXP	MK12 # 43	Deep	GDC	32-58.77N	121-59.41W	g	CNTL07RR
1937	140403	0	BTXP	MK12 # 44	Fast_Deep	GDC	32-59.84N	121-57.24W	g	CNTL07RR
2035	140403	0	BTXP	MK12 # 45	Deep	GDC	33-06.00N	121-44.54W	g	CNTL07RR
0055	150403	0	BTXP	MK12 # 46	Deep	GDC	33-18.75N	121-17.94W	g	CNTL07RR
0159	150403	0	BTXP	MK12 # 47	Deep	GDC	33-25.36N	121-04.02W	g	CNTL07RR
0653	150403	0	BTXP	MK12 # 48	Deep	GDC	33-35.98N	120-43.18W	g	CNTL07RR
0700	150403	0	BTXP	MK12 # 49	Deep	GDC	33-36.68N	120-41.70W	g	CNTL07RR
1323	160403	0	BTXP	MK12 # 50	Deep	GDC	34-15.40N	120-55.48W	g	CNTL07RR
1946	160403	0	BTXP	MK12 # 51	Deep	GDC	34-05.18N	121-16.06W	g	CNTL07RR
2100	160403	0	BTXP	MK12 # 52	Deep	GDC	33-57.78N	121-31.75W	g	CNTL07RR
0134	170403	0	BTXP	MK12 # 53	Deep	GDC	33-43.68N	121-59.11W	g	CNTL07RR
0158	170403	0	BTXP	MK12 # 54	Deep	GDC	33-41.36N	122-04.39W	g	CNTL07RR
0756	170403	0	BTXP	MK12 # 55	Deep	GDC	33-24.53N	122-43.40W	g	CNTL07RR
0855	170403	0	BTXP	MK12 # 56	Deep	GDC	33-17.73N	122-55.64W	g	CNTL07RR
1255	170403	0	BTXP	MK12 # 57	Deep	GDC	33-04.68N	123-22.27W	g	CNTL07RR
1359	170403	0	BTXP	MK12 # 58	Deep	GDC	32-57.20N	123-35.25W	g	CNTL07RR
1929	170403	0	BTXP	MK12 # 59	Deep	GDC	32-56.57N	124-00.11W	g	CNTL07RR
2039	170403	0	BTXP	MK12 # 60	Deep	GDC	33-08.19N	124-08.38W	g	CNTL07RR
0157	180403	0	BTXP	MK12 # 61	Deep	GDC	33-30.09N	124-07.02W	g	CNTL07RR
0307	180403	0	BTXP	MK12 # 62	Deep	GDC	33-36.72N	123-52.10W	g	CNTL07RR
0747	180403	0	BTXP	MK12 # 63	Deep	GDC	33-50.22N	123-24.41W	g	CNTL07RR
0851	180403	0	BTXP	MK12 # 64	Deep	GDC	33-56.50N	123-10.52W	g	CNTL07RR
1325	180403	0	BTXP	MK12 # 65	Deep	GDC	34-09.62N	122-43.31W	g	CNTL07RR
1423	180403	0	BTXP	MK12 # 66	Deep	GDC	34-15.30N	122-31.36W	g	CNTL07RR
2050	180403	0	BTXP	MK12 # 67	Deep	GDC	34-29.97N	122-01.89W	g	CNTL07RR
2157	180403	0	BTXP	MK12 # 68	Deep	GDC	34-36.51N	121-47.37W	g	CNTL07RR
2206	180403	0	BTXP	MK12 # 69	Deep	GDC	34-37.34N	121-45.37W	g	CNTL07RR
0237	190403	0	BTXP	MK12 # 70	Deep	GDC	34-47.51N	121-18.76W	g	CNTL07RR
0304	210403	0	BTXP	MK12 # 71	Fast_Deep	GDC	33-31.05N	124-03.02W	g	CNTL07RR
1809	220403	0	BTXP	MK12 # 72	Fast_Deep	GDC	30-41.60N	121-53.96W	g	CNTL07RR

*** Hydrocasts ***

1924	050403	0	HCGF	B Hydrocast 93/45	GRD	32-20.59N	118-34.40W	g	CNTL07RR
1951	050403	0	HCGF	E Hydro cast 93/45	GRD	32-20.59N	118-34.39W	g	CNTL07RR
0139	070403	0	HCGF	B Go-Flo #2	GRD	30-50.83N	121-35.40W	g	CNTL07RR
0210	070403	0	HCGF	E Go-Flo #2	GRD	30-50.82N	121-35.40W	g	CNTL07RR
1948	080403	0	HCGF	B Hydrocast 90/90	GRD	31-25.23N	121-59.40W	g	CNTL07RR
2040	080403	0	HCGF	E Hydrocast 90/90	GRD	31-25.24N	121-59.40W	g	CNTL07RR
1936	090403	0	HCGF	B Hydrocast 90/53	GRD	32-39.12N	119-28.91W	g	CNTL07RR
1753	100403	0	HCGF	E Hydrocast 90/28	GRD	33-29.01N	117-45.55W	g	CNTL07RR
1730	100403	0	HCGF	B Go-Flow 90/28	GRD	33-29.01N	117-45.55W	g	CNTL07RR
1753	100403	0	HCGF	E Go-Flow 90/28	GRD	33-29.01N	117-45.55W	g	CNTL07RR
0058	110403	0	HCGF	B Go-flow 87/33	GRD	33-53.45N	118-29.40W	g	CNTL07RR
0110	110403	0	HCGF	E Go-Flow 87/33	GRD	33-53.45N	118-29.40W	g	CNTL07RR
2148	110403	0	HCGF	B Go Flo hydrocast	GRD	32-56.49N	119-13.28W	g	CNTL07RR
2312	110403	0	HCGF	E Go Flo hydrocast	GRD	32-56.49N	119-13.28W	g	CNTL07RR
0518	120403	0	HCGF	B Go Flow 87/55	GRD	33-08.42N	120-01.08W	g	CNTL07RR
0553	120403	0	HCGF	E Go Flow 87/55	GRD	33-07.83N	120-01.47W	g	CNTL07RR

#GMT	DDMMYY	SAMP	B	SAMPLE	DISP				p	CRUISE
#TIME	DATE	TZ	CODE	E IDENTIFIER	CODE	LATITUDE	LONGITUDE		c	LEG-SHIP
#-----	----	--	-----	-----	-----	-----	-----	-----	-	-----
1623	120403	0	HCGF	B Go-Flow 87/70	GRD	32-38.67N	121-02.67W		g	CNTL07RR
1636	120403	0	HCGF	E Go- Flow 87/70	GRD	32-38.67N	121-02.67W		g	CNTL07RR
0446	150403	0	HCGF	B Go Flow 83/60	GRD	33-34.83N	120-45.09W		g	CNTL07RR
0524	150403	0	HCGF	E Go Flow 83/60	GRD	33-34.83N	120-45.09W		g	CNTL07RR
1937	150403	0	HCGF	B Go Flow 83/42	GRD	34-10.72N	119-30.49W		g	CNTL07RR
2006	150403	0	HCGF	E Go Flo 83/42	GRD	34-10.72N	119-30.49W		g	CNTL07RR
0310	160403	0	HCGF	B Go-flo 82/46.5	GRD	34-16.49N	119-59.31W		g	CNTL07RR
0345	160403	0	HCGF	E Go-flo 82/46.5	GRD	34-16.49N	119-59.31W		g	CNTL07RR
1518	160403	0	HCGF	Go Flo 80-60	GRD	34-09.00N	121-08.99W		g	CNTL07RR
0440	190403	0	HCGF	B Go Flow 77/55	GRD	34-53.33N	121-11.84W		g	CNTL07RR
0519	190403	0	HCGF	E Go Flow 77/55	GRD	34-53.33N	121-11.84W		g	CNTL07RR
0910	190403	0	HCGF	B Go Flo 77/51	GRD	35-01.29N	120-55.10W		g	CNTL07RR
0939	190403	0	HCGF	E Go Flo 77/51	GRD	35-01.29N	120-55.10W		g	CNTL07RR
#***Net Tows ***										
1049	050403	0	ON1M	B Glaser 1m net	IOD	32-31.93N	118-06.40W		g	CNTL07RR
1101	050403	0	ON1M	E Glaser 1m net	IOD	32-31.87N	118-06.62W		g	CNTL07RR
0815	090403	0	ON1M	B 1m net tow 90/70	IOD	32-05.10N	120-38.82W		g	CNTL07RR
0838	090403	0	ON1M	E 1m net tow 90/70	IOD	32-05.21N	120-39.42W		g	CNTL07RR
0145	100403	0	ONXX	B Ring Net 90/45	IOD	32-55.16N	118-56.63W		g	CNTL07RR
0208	100403	0	ONXX	E Ring Net 90/45	IOD	32-55.18N	118-57.05W		g	CNTL07RR
#***				End Sample Index						CNTL07RR