

Southern Island - Ramona Canal

			N	S	E	W
1	N 27° 06' W	150	1335			683
2	N 3° 38' W	134	1337			8.5
3-1	S 16° 02' E	278		267.2	76.8	
			267.2	267.2	76.8	76.8
10-11	N 48° 19' W	174	115.7			130.0
11-12	N 39° 26' W	248.0	191.7			157.7
12-10	S 43° 06' E	421		307.4	287.7	
			307.4			287.7
18-19	S 34° 57' W	71		58.2		40.7
19-20	S 57° 34' W	142		76.0		119.6
20-18	N 50° 04' E	209	134.2		160.3	
23-24	S 12° 51' W	341		332.4		76.2
	N 32° 29' E	437	368.6		234.7	
25	S 77° 08' W	163		36.2		158.5
	S 32° 29' W	437		368.6		234.7
	N 45° 59' E	560	389.1		402.7	
26	S 83° 03' W	169		20.5		168.0
	S 45° 19' W	157		389.1		402.7
	N 11° 25' E	492	212.5			443.8
27	S 13° 06' W	181	176.6			41.1

			N	S	E	W
	S 64° 25' W	492	212.5			443.8
	N 78° 51' E	610	117.3		598.6	
28	N 51° 25' W	1.81	195.2			154.8
	S 78° 55' W	610		117.3		598.6
	S 85° 48' E	745		54.6	743.0	
29	N 40° 02' W	225	171.9			144.4
	N 85° 48' W	745	54.6			743.0
	S 65° 48' E	919		376.7	838.2	
30	N 16° 28' W	336	322.1			95.2
	N 65° 48' W	919	376.7			838.2
	S 63° 01' E	1052		477.3	937.5	
31	N 44° 38' W	141	100.6			99.3
	N 63° 01' W	1052	477.3			937.5
	S 60° 12' E	1236		614.3	1072.6	
32	N 44° 36' W	192	137.0			135.1
34	S 54° 04' W	138		81.0		111.7
	N 69° 19' E	300	106		280.7	
35	S 81° 35' W	171		250		169.0
	S 69° 19' W	300		106		280.7
	N 70° 04' E	441	150.3		414.6	
36	S 71° 42' W	141		44.3		133.9

		N	S	E	W
	S 70°04'W	441	150.3		414.6
	N 71°37'E	487	153.6	462.1	
36-37	S 86°01'W	48	3.3		47.5
	S 36°17'W	77	62.1		45.6
40-41	S 11°49'W	106	103.3		21.6
41-43	S 67°41'W	83	31.5		76.8
	N 36°11'E	244	196.9	144.0	
	S 63°47'W	55	24.3		49.3
	N 83°19'E	121	14.1	120.2	
47-48	N 81°49'W	72	10.2		70.9
	S 39°27'W	137	105.8		87.0
	N 55°04'E	298	170.6	234.3	
50-51	S 66°15'W	161	64.8		147.3
	S 29°43'W	154	133.7		76.3
	N 62°13'E	168	78.3	148.6	
53-54	N 52°32'W	91	55.4		72.3
	S 62°13'W	168	78.3		148.6
	N 87°23'E	305	13.9	304.7	
54-55	N 67°35'W	169	64.4		156.1
	S 87°23'W	305	13.9		304.7
	S 87°55'E	453	16.5	452.7	
55-56	N 78°23'W	151	30.4		148.0

		N	S	E	W
	N 87°55'W	453	16.5		452.7
	S 84°57'E	555	48.8	552.8	
56-57	N 72°07'W	105	32.3		100.1
	N 84°57'W	555	48.8		552.8
	S 82°02'E	696	96.5	689.3	
57-58	N 70°44'W	145	47.7		136.5
	N 82°02'W	696	96.5		689.3
	S 76°40'E	750		1730	729.8
58-59	N 27°54'W	87	76.5		40.5
	N 76°40'W	750	1730		729.8
	S 74°04'E	933		256.1	897.1
59-60	N 63°35'W	187	83.1		167.3
	N 74°04'W	933	256.1		897.1
	S 73°09'E	118.7		344.1	1136.0
60-61	N 69°47'W	255	88.0		238.9
	N 73°09'W	118.7	344.1		1136.0
	S 68°44'E	118.9		428.0	1099.6
61-62	N 23°27'E	91	83.9		36.4
	N 68°44'W	118.0	428.0		1099.6
	S 67°45'E	123.4		467.2	1142.1
62-63	N 47°49'W	58	39.2		42.5

		N	S	E	W
	S 85° 34' W	113	87		112.7
	S 88° 00' E	286	10.0	285.8	
4-65	N 83° 50' W	174	18.7		173.1
	S 9° 50' W	123		121.2	210
	N 34° 11' E	203	167.9		114.1
67-68	S 63° 22' W	104		46.7	93.1
	S 1° 19' E	130		130.0	3.0
	N 19° 31' E	268	252.6		89.5
69-70	S 37° 02' W	154		122.6	92.5
	S 19° 31' W	268		252.6	89.5
	N 25° 18' E	423	384.5		176.2
70-71	S 33° 19' W	158		131.9	86.7
72-73	S 13° 37' W	127		123.4	29.9
	N 11° 37' E	398	389.8		80.1
73-74	S 10° 40' W	271		266.4	50.2
	S 11° 37' W	398		389.8	80.1
	N 29° 50' E	510	442.4		253.7
74-75	S 73° 09' W	181		52.6	173.6
	S 29° 50' W	510		442.4	253.7
75-76	S 21° 51' E	39		36.4	14.6
	N 35° 15' E	758	619.0		437.5
	S 54° 45' W	243		140.2	198.4

		N	S	E	W
	N 54° 45' E	243	140.2		198.4
	S 71° 37' W	220		69.4	208.8
76-77	S 8° 22' E	72		70.8	10.4
	N 58° 05' W	120	63.4		101.9
	S 79° 15' E	150		280	147.4
78-79	S 52° 07' W	58		35.4	45.5
	N 79° 15' W	150	28.		147.4
	N 71° 37' E	220	69.4		208.8
77-78	S 32° 14' W	115		97.4	61.4
	S 35° 15' W	758		619.0	437.5
	N 60° 56' E	983	477.6		859.2
80-81	N 71° 28' W	445	141.4		421.7
	S 60° 56' W	983		477.6	859.2
	N 60° 25' E	1046	451.7		943.4
81-82	N 72° 54' W	88	125.9		84.2
	S 64° 25' W	1046		451.7	943.4
	N 68° 16' E	1334	494.		1239.2
82-83	S 81° 52' W	299		42.3	295.8
	S 68° 16' W	1334		494.0	1239.2
	N 76° 21' E	1688	398.3		1640.3
83-84	N 76° 35' W	412	95.7		401.1

		N	S	E	W
	S 76° 21' W 1688		398.3		1640.3
	N 78° 31' E 1760	350.4		1724.8	
84-85	N 60° 27' W 97	47.9			84.5
	S 15° 25' E 143		137.8	38.0	
	N 10° 22' E 207	203.6		37.3	
88-89	S 48° 51' W 100		65.8		75.3
89-90	S 16° 48' E 365		349.4	105.5	
	N 12° 49' W 453	441.7		100.5	
90-91	S 2° 36' W 92		92.3		5.0
	S 12° 49' E 453		441.7	100.5	
	N 5° 10' W 500	498.0		4.6	
91-92	S 45° 25' W 79		56.3		55.5
	S 5° 10' E 500		498.0	4.6	
	N 0° 28' E 570	570.0		4.6	
92-93	S 34° 34' W 87		72.0		49.6
	S 0° 28' W 570		570.0		4.6
	N 5° 19' E 555	552.6		51.3	
93-94	N 69° 34' W 50	17.4			46.7
	S 5° 19' W 555		552.6		51.3
	N 14° 52' E 485	468.7		124.4	
94-95	N 41° 04' W 111	83.9			73.1

		N	S	E	W
	S 14° 52' W 485		468.7		124.4
	N 40° 59' E 455	343.5		298.4	
95-96	N 54° 16' W 214	125.2			174.0
	S 40° 59' W 455		343.5		298.4
	N 49° 44' E 558	360.7		425.8	
96-97	S 82° 19' W 129		17.2		127.4
	S 49° 44' W 558		360.7		425.8
	N 51° 45' E 720	445.7		565.4	
97-98	S 58° 40' W 163		85.0		139.6
	S 51° 45' W 720		445.7		565.4
	N 59° 18' E 811	414.0		697.3	
98-99	N 76° 29' W 136	31.7			131.9
	S 59° 18' W 811		414.0		697.3
	N 57° 67' E 945	354.8		875.9	
99-100	N 71° 40' W 188	59.2			178.6
	S 22° 57' W 114		105.0		44.4
	N 29° 58' E 173	149.9		86.4	
102-103	S 43° 05' W 61		44.9		42.0
	N 8° 23' E 221	218.6		32.2	
	S 13° 09' W 108		163.6		38.2
104-105	S 6° 16' E 55		55.0	6.0	

		N	S	E	W
	S 3°37'E	133	132.7	8.4	
	N 16°44'E	123	117.8	35.4	
107-108	N 71°13'W	46	14.9		43.8
	S 16°44'W	123	117.8		35.4
	N 44°33'E	288	205.1	20.20	
108-109	S 62°21'W	188	87.3		166.6
	S 44°33'W	288	205.1		20.20
	N 56°13'E	490	272.5	407.3	
109-110	S 71°49'W	216	67.4		205.3
	S 56°13'W	490	272.5		407.3
	N 61°47'E	636	300.7	560.4	
110-111	S 79°34'W	156	28.2		153.1
	S 8°56'W	110	108.7		17.1
	N 21°50'E	257	238.6	95.6	
	N 84°55'W	50	4.4		49.8
115-116	S 12°04'W	137	134.3		28.7
	S 21°50'W	257	238.6		95.6
	N 37°20'E	321	255.2	194.7	
117-118	S 80°32'W	100	16.6		99.1
	S 37°20'W	321	255.2		194.7
	N 38°27'E	386	302.3	240.0	
118-119	S 43°53'W	65	47.1		45.3

		N	S	E	W
	S 8°46'E	19	18.8	2.9	
	N 6°14'E	106	105.4	11.5	
132-133	S 9°26'W	88	105.4	86.6	14.4
	S 9°04'E	43		42.5	6.8
	N 43°1'W	97	96.7		7.7
134-135	S 0°51'E	54		54.2	.8
	N 77°24'E	256	55.8		249.8
	N 84°40'W	253	23.5		251.9
139-140	S 1°31'E	79		79.3	2.1
	S 84°40'E	253		23.5	251.9
	N 35°37'W	113	91.9		6.58
140-141	S 69°49'W	198		68.4	186.1
	S 35°37'E	113		91.9	6.58
	N 10°17'E	154	151.5		27.5
141-142	S 57°26'W	111		59.6	93.3
	S 10°17'W	154		151.5	27.5
	N 32°21'E	215	181.6		114.9
142-143	S 71°00'W	93		30.1	87.4
	S 32°21'W	215		181.6	114.9
	N 42°41'E	310	227.9		210.2
143-144	S 63°59'W	106		46.3	95.3

			N	S	E	W
	S 42° 41' W	310		227.9		210.2
	N 52° 19' E	541	330.7		428.2	
144-145	S 64° 45' W	241		102.8		218.0
	S 42° 33' W	112		82.5		75.7
	N 51° 36' E	271	168.3		212.4	
146-147	S 57° 53' W	161		85.8		136.7
	S 11° 22' W	115		112.7		22.7
	N 32° 08' E	170	144.0		90.4	
148-149	S 65° 11' W	75		31.3		67.7
	S 32° 08' W	170		144.0		90.4
	N 38° 58' E	368	286.1		231.4	
149-150	S 44° 47' W	200		142.1		141.0
150-151	S 18° 48' W	146		138.2		47.0
	N 32° 54' E	236	198.1		128.2	
151-152	S 53° 35' W	101		59.9		81.2
	S 32° 54' W	236		198.1		128.2
	N 36° 34' E	381	305.7		227.4	
152-153	S 42° 40' W	146		107.6		99.2
153-154	S 3° 36' E	385		384.2		24.2
	N 82° 29' E	412	407.5		60.8	
154-155	S 7° 44' W	88		23.3		38.50

			N	S	E	W
	S 8° 29' W	412		407.5		60.8
	N 13° 42' E	503	488.7		119.1	
155-156	S 35° 47' W	100		81.2		58.3
	S 13° 42' W	503		488.7		119.1
	N 30° 22' E	758	654.0		383.2	
156-157	S 57° 57' W	312		165.3		26.41
157-158	S 13° 08' E	150		146.1		34.1
	N 2° 56' E	259	258.7		13.2	
158-159	S 22° 47' W	122		112.6		47.3
	S 2° 56' W	259		258.7		13.2
	N 7° 02' E	340	337.4		41.6	
159-160	S 19° 50' W	84		78.7		28.4
	S 7° 02' W	340		337.4		41.6
	N 14° 58' E	383	370.0		98.9	
160-161	S 60° 22' W	66		32.6		57.3
	S 14° 58' W	383		370.0		98.9
	N 21° 16' E	472	439.8		171.2	
161-162	S 46° 00' W	101		69.8		72.3
	S 21° 16' W	472		439.8		171.2
	N 17° 14' E	601	574.0		178.1	
162-163	S 2° 57' W	134		134.2		6.9

See bk #4 p 33

S. line T.S.R.I.E. Lat = 33° 20' Long = 112°

diff of time = 7 hr 48 min local time = 11:00 AM

or lat = 56° 40' $\cos \frac{1}{2} Z = \frac{\sin \frac{1}{2} S \sin \frac{1}{2} s}{\sin \frac{1}{2} s \sin \frac{1}{2} s}$

Sta 52 + 194

Time = 9 40

dec = 15° 39' or dec = 79° 21'

7 48
17 40 = 5 40

alt = 57° 23' or alt = 32° 37'

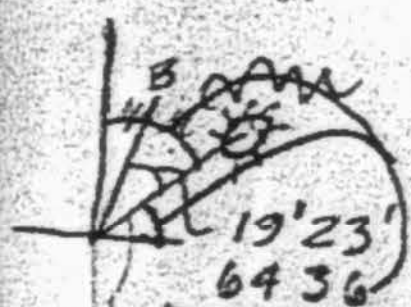
or lat = 56° 40'

S = 163° 38'

S = 81° 49'

25 - or dec = 7° 28'

log sin 81° 49' = 9.995555
log sin 7° 28' = 9.113774
or log sin 32° 37' = 0.268398
or log sin 56° 40' = 0.078060
log cos 1/2 = 2) 19.455787
9.727893
1/2 Z = 57° 42'
Z = 115° 24'
from S = 640 36'



S 83 59 E

Sta 72 + 75 || time = 3:08 + 12 + 7 48 = 11 hr 08 min

dec = 15° 39' 39' = 11.13 hr.

15° 43'

see p 39

alt = 40° 24' or dec = 79° 17'

or alt = 49° 36'

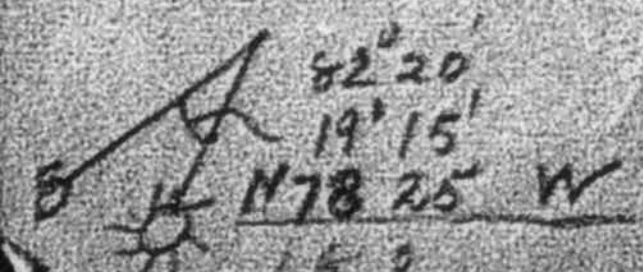
or lat = 56° 40'

S = 180° 33'

1/2 S = 90° 16'

1/2 S - or dec = 16°

log sin 90° 16' = 9.999995
log sin 16° = 9.440338
or log sin 49° 36' = 0.018808
or log sin 56° 40' = 0.078060
2) 19.636701
log cos 1/2 Z = 9.818350
1/2 Z = 48° 50'
Z = 97° 40'
from S = 82° 20'



N 136W	2928	2927		8.2
N 69° 20'E	2510	88.6	234.8	
N 6300E	1844	54.2	106.4	
N 1814E	747	70.9	23.4	
N 5511E	1797	102.6	147.5	
N 3513E	1297	106.0	74.8	
N 5605E	1149	64.1	95.3	
N 2903E	2146	187.6	104.2	
N 5723E	4680	252.3	394.2	
N 3000E	847	73.4	42.3	
N 5925E	1840	93.6	158.4	
N 2937E	999	86.8	49.4	
N 4240E	4442	326.6	301.0	
N 8422E	2524	24.8	251.2	
S 6459E	3099		131.1	280.8
S 7655E	3922		88.8	382.0
South	15765		15765	
S 8946W	26058		10.6	260.58
		1808.1	18010	2614.5
S 8923W	288.7		13.9	1288.6
S 8910W	1314.6		19.2	1314.5
S 019E				
N 8946E	13167	53		
N 204W	14	13.8	131.67	22
N 104W	140	13.8		22
N 019W	15852	15852		81
S 7655E	12.1		2.6	10.8
South	1576.5		1576.5	
	599.0	1599.0	10.9	10.8

T 9 S R 1 N
Sec 3 1 + 3
Tillable land
in + near olive
orchard.

N 83° 59' W

58 10 L

142 09

S 37° 51' W

9 11 R

S 47° 02' W

45 28 R

92 30

N 87° 30' W

3 39 L

91 09

S 88° 51' W

4 37 R

93 28

N 86° 32' W

15 R

N 86° 17' W

30 L

N 85° 47' W

2 44 R

N 85° 03' W

21 21 R

N 63° 42' W

14 43

N 48° 25' W

12 35 L

91 00

S 89° 00' W

8 24 L

S 80° 36' W

23 15 R

N 76° 45' W

N 76° 45' W

72 12 L

148 57

S 31° 03' W

32 12 R

S 63° 15' W

26 32 R

S 89° 47' W

9 R

S 89° 56' W

41 L

S 89° 15' W

1 06 R

90 21

N 89° 39' W

2 05 L

S 88° 13' W

10 31 R

98 44

N 81° 16' W

16 16 L

S 82° 28' W

9 24 R

N 88° 08' W

2 18 R

N 85° 50' W

77.5
536.24E
541.31N

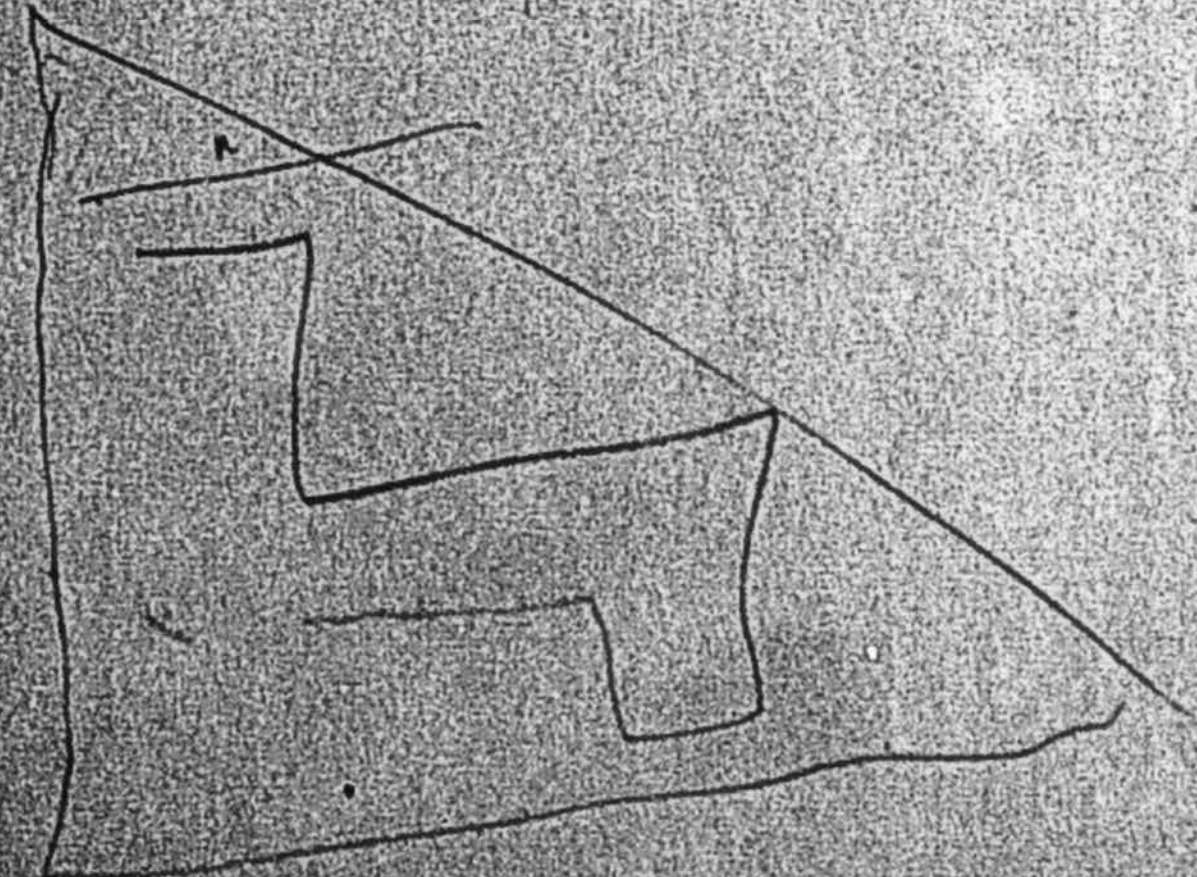
77.5 1150.5
74 16.4
770.1 1134.1
784.9 1166.9

536.24E
77.5
1141.9
565.41W

S 67° 13' W
87.0
174.1
175.4

336.24E
536.24E
94.04
N 85° 12' E

228
E-20 } section Mon Diameter "A"



1.67
9.71
26.7

338. + 13.5 - 11.9

.0999
30.0
499.50
299.70
34.9650
35'

777.5
13.5
791.0

1150.5
11.9
1138.6

170.5
149.7

S	N	26855	26855	8.6
S 029W	13466	13466		11.4
S 8934E	26901	20326900		
N 012E	13766	13766		4.8
N 8946E	13106	53	1310.6	
S 8726E	13197	59.1	1318.4	
N 1016E	27937	27490	497.9	
S 8948W	58017	19.4	5801.7	
4130.9413095821758217				

S 8926E	26560	26326559		
S 003E	26765	26765		23
S 1016W	27937	27490	497.9	
N 8726W	13197	59.1	1318.4	
S 8946W	13106	53	1310.6	
N 458E	5418.4	5398.0	46.87	
54571545713126931269				

S 8955E	29009	4229009		
S 1016W	27937	27490	497.9	
N 8726W	13197	59.1	1318.4	
S 8946W	13106	53	1310.6	
N 447E	27092	2699.8	225.9	
27589275853126831269				

S 011W	26855	26855		8.6
S 029W	13466	13466		11.4
S 8934E	26901	20326900		
N 012E	13766	13766		4.8
N 447E	27092	2699.8	225.9	
S 8932W	29008	240	2900.7	
4076.4407642920729207				

S 8955E	29009	4229009		
N 003W	26765	26765		23
N 8926W	26560	263	2655.9	
S 508W	27092	2698.6	242.7	
27028270282900929009				

N	S	E	W
S 8729W	13758	604	13745
S 100E	52687	920	
N 8936E	13452	94	13452
S 029W	13466		11.4
N 8936E	12937	90	1293.7
S 8934E	26901		20326900
N 012E	13766	13766	4.8
N 8946E	13106	53	1310.6
N 746E	13436	13313	181.6
N 8920W	11976	139	1197.5
N 424E	13546	13506	103.9
N 8952W	181.4	4	181.4
S 8928W	29020		270
S 012W	13428		4.7
S 8903W	13145		218
N 041W	39901	3989.8	47.6
80863808767021870333			

S 012W	13428		13428
S 8936W	12937		9.0
N 041W	13300	1330.0	15.9
N 8903E	13145	218	1314.3
1351.81351.81314313143			

S 012W	26855		26855
S 029W	13466		13466
S 8934E	26901		20326900
N 012E	13766	13766	4.8
N 358E	27059	2699.4	187.2
S 8928W	29020		270
4076.0407602882028820			

S 447W	13546		1349.9
N 8946E	13106	53	1310.6
S 8726E	13197		59.1
N 1016E	1396.8	1374.5	248.9
N 8924W	27651	29.2	276.49
14090140902877.92877.9			

N 89°24'W	1378.0	144	1377.9
S 447'W	13546	13499	1130
N 89°46'E	1310.6	53	1310.6
N 743'E	13424	13302	1803
	13499	13499	14909

N 89°24'W	1711	18	1711
N 447'E	13546	13499	1130
S 89°55'E	1814	3	1814
S 513'W	13570	13514	1233
	13517	13517	2944

S 8729'W	13758	60.4	13745
S 100'E	52695	52687	920
N 89°36'E	13452	94	13452
S 029'W	13466	13466	114

N 89°36'E	12937	90	12937
S 89°34'E	2690.1	203	2690.0

N 012'E	1376.6	1376.6	48
N 89°46'E	1310.6	53	1310.6
N 743'E	13424	13302	1803

N 89°24'W	1206.9	126	1206.8
N 513'E	13570	13514	1233

N 89°55'W	1814	3	1814
-----------	------	---	------

S 89°32'W	2900.9	240	2900.8
-----------	--------	-----	--------

S 011'W	13428	13428	43
---------	-------	-------	----

S 89°03'W	13145	218	13143
-----------	-------	-----	-------

N 041'W	3990.1	3989.8	47.6
---------	--------	--------	------

	80846	80846	70399
	70411		

S 89°26'E	4396	43	4396
-----------	------	----	------

N 254'E	4389	438.3	222
---------	------	-------	-----

S 89°26'E	1328.0	13.1	1327.9
-----------	--------	------	--------

S 003'E	2676.5	2676.5	23
---------	--------	--------	----

N 89°55'W	2900.9	42	2900.9
-----------	--------	----	--------

N 508'E	13546	13493	1213
---------	-------	-------	------

N 4735'E	13377	9021	9876
----------	-------	------	------

	26939	26939	29009
	29009		

T 95 R 2 W

Madison

Smith

Course	Dist	N	S	E	W
N 0°12'E	1276.6	1376.6		4.8	
N 88°32'E	2350.8	60.1		2350.0	
S 67°40'E	301.6		114.6	279.0	
S 89°48'E	7677.1		5.8	7677.1	
N 5916'E	932.2	91		832.1	
N 0°1'E	803.2	803.2		2	
N 2°59'E	515.1	514.4		26.8	

S 0°53'E	3421.8		3421.4	52.8	
S 0°43'E	1808.2		1808.1	22.6	
S 89°32'E	2638.5		21.5	2638.4	
N 0°29'E	2925.5	2925.4		247	
N 0°31'W	2348.8	2348.7		210	
S 89°18'W	2607.8		31.8	2607.6	
S 85°05'W	1116.9		1.03	1116.5	
		52741	52931	27385	27453

S 0°29'W	2638.4		2638.5	222	
S 0°29'W	1346.6		1346.5	113	

S 88°48'E	609.1		12.7	609.0	
-----------	-------	--	------	-------	--

S 89°48'E	3758.1		13.1	3758.1	
-----------	--------	--	------	--------	--

N 89°16'E	932.2	11.9		932.1	
-----------	-------	------	--	-------	--

N 0°01'E	803.2	803.2		2	
----------	-------	-------	--	---	--

N 2°59'E	515.1	514.4		26.8	
----------	-------	-------	--	------	--

N 0°48'W	3464.8	3464.5		48.4	
----------	--------	--------	--	------	--

N 53°25'E	674.9	402.2		541.9	
-----------	-------	-------	--	-------	--

N 0°03'E	1558.8	1558.8		1.4	
----------	--------	--------	--	-----	--

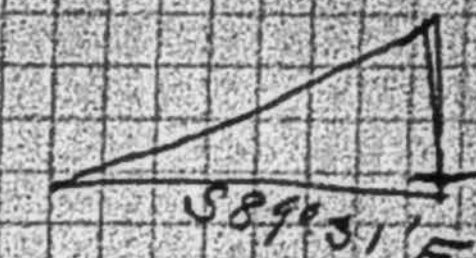
N 0°03'E	2756.0			2756.0	
----------	--------	--	--	--------	--

S 0°03'E	2627.8		2627.8		
----------	--------	--	--------	--	--

S 49°31'W	171.6		116.6	2898.7	136.5
-----------	-------	--	-------	--------	-------

	6165.1	6165.1	5861.5	5870.1	
--	--------	--------	--------	--------	--

N 1/2 of NE 1/4
See 5
T 105 R 2 W



Half
property
N 40° S E

T 105 R 2 W
N 1/2 of NE 1/4
S 00° S

See 32
T 95 R 2 W

	Course	Dist	N	S	E	W
135-						
136				11717.2		4342
136-						
140	S 75° 1' E	1183.		11719	161.6	
175						
500	S 64° 53' E	308.	130.7	1105	278.9	278.9
	N 0° 08' W	2758.	2758.4			63
	S 25° 03' E	390.		3533	165.1	
	N 64° 53' E	308	130.7		278.9	
	N 63° 57' W	494.2	222.6			444.0
	N 0° 08' W	1117	1117.0			25
	S 70° 58' E	32		10.4	30.3	
	N 81° 17' E	181	27.4		178.9	
	S 52° 19' W	541		3307		4282
			1144.4	341.1	2092	430.8
	S 15° 25' E	833.3		803.3	221.6	
	N 64° 17' W	2291	993.8			2063.7
	N 48° 53' E					
	N 32° 21' W					
66	N 32° 21' W	6155				
	S 27° 50' W	727.6		643.4		338.9
	N 32° 21' W	6155	5200			3243
	N 34° 11' E	203	167.9		114.1	
	S 17° 22' E	721		687.9		2152
	N 17° 22' W	721				
	S 28° 18' W					
	South					

No. of Stal of and last Survey	No.	Course	Dist.	Spherical excess last sec. 2' + 3'	
1327.134					
	N 44° 54' W	337	238.7		237.9
	S 70° 59' E	1300		423.6	1229.0
	R 79° 26' W	1008	184.9		991.1
	N 70° 59' W	1300	423.6		1229.0
	S 53° 33' E	2280		1354.6	1834.0
	N 36° 27' E	30	24.1		17.8
	N 34° 29' W	1100	906.9		622.8

E 1/2 Sec 31

p 16-17

Dist	Bear	N	S	E	W	N	S	E	W
2925.5	N 0°29' E	2925.40		24.61					
2348.8	N 0°31' W	2348.71			21.18				
2607.8	S 89°18' W		31.85		2607.61				
116.9	S 85°05' W		10.02		116.46				
3421.8	S 0°50' E		3421.14	49.76					
2638.5	S 89°31' E		22.25	2638.41					
24.5	S 34°48' W		20.11		13.98				
1808.2	S 0°40' E		1808.08	21.04					
		5274.11	5313.45	2733.88	2759.23				
		(39.6)		(26.35)					

p 14-15	From Pt 29/32 S 2676.6 to 1/4 Cor - SE Cor NE 1/4 Sec 32								
4.2?	E?								
2573.6	S 0°05' W		2573.6		22.9				
103.0	S 2°52' E		102.87	516					

p 13-15	From Pt 4/2 E 29/32 N 2739. - E 1309 - S 1368 to NE Cor SW 1/4 Sec 32								
236.7	N 1°39' E	236.60		6.81					
1159.2	N 0°36' E	1159.14		12.14					
1191.1	N 0°39' E	1191.03		13.51					
147.1	N 0°08' E	147.1		0.35					
1309.4	S 89°57' E		1.14	1309.4					
1298.7	S 0°03' W	1298.70		1.14					
62.8	S 2°49' W	69.72		3.43					

In Sec 33

Dist	Bear	N 45		E 45		Lat		Long		Lat		Long	
		Lat	Diff	Lat	Diff	N	S	E	W	N	S	E	W
24.5	N 39°48' E	20.11		13.98									
1346.6	S 0°29' W		1346.55		11.97								
609.1	S 88°48' E		1275.60	97									
2081.0	S 89°48' E		72020.100										
1376.6	N 0°12' E	1376.6		4.80									
2350.8	N 88°32' E	60.15		2350.03									
301.6	S 67°40' E		1146.1	275.78									
3464.8	N 0°48' W	3464.40			48.37								
674.9	N 53°25' E	402.23		541.93									
1558.8	N 0°03' E	1558.80		1.36									
128.9	S 89°23' W		1.37		128.87								
128.9	N 89°23' W	1.37			128.87								
2498.2	W			2498.20									
2627.8	S		2627.80										
2808.7	W			2808.70									
179.6	S 99°30' W		1166.4		136.57								
2638.9	S 0°29' W		2638.31		22.25								
		6843.73	8653.1	5481.05	673.24								
		1144.3	1144.3	1144.3	1144.3								
		(18.43)		(18.43)									

1189.23E
 3414
 12342
 53618E
 53638E

T 9 S
R 2 W
traverse
of a
portion of
Madison
Smith
Property.

San Diego
March 24-1913-

M^r John T. Holbert
Pala - Calif.

Dear John 1 - I enclose paper Tracing of Sect 5 T10S R2W
You will notice that on the old survey that the survey stopped at
a point 39.86 chains - on the new survey. They extended the
line to a closure with the Section Corner (N.E. cor Sec 5) -
Also that in running to this point 39.86 chains the course used was
N 88° 32' E - while in closing to Section Corner Course S 87° 50' E

was used - and different Variations -
I think that before you leave Pala you should make a search
for the Cor. 20.14 chains from Section Cor. as if we can find
that we are in good condition -

Also Lot 2 - Sec 5 - T10S R1W - is 27.36 Acres -

I think you have the blueprint of the Government Survey
of this Township -

Also I have been Tracing The Maderen Smith Land
I enclose description in deed Manuelito Cota et al To
Ignacio Valenzuela also Extract from Deed
Culver to South Coast Land Co. -

My judgment in this matter is that the S Coast land runs

N 45° E 20.24 chains to a point on the Southwesterly line of land conveyed in
deed from Manuelito Cota to Ignacio Valenzuela etc to a point 2.34 chains
East of the SW Cor of Hayes Tract - Thence N 47½° E 9.30 chains
to NE Cor NW 4 NE 4 - Sec 32 -

I will write to The South Coast Land Co for a new description
of this tract - Yours in haste

E. W. C. C.

Manuelito Cota et al
To
Ignacio Valenzuela

Commencing at the NE Cor of NW 4 NE 4 Sec 32 T9S R 2 W
running thence West 9 chains to a stake; thence South
6.65 chains to a mound of rocks; thence east 9 chains to a
stake in river bottom thence North - 6.60 chains to point
of beginning containing 6 acres of land
Nov 19-1896

Book 2 Leo - pag 144

378-545
122-925
378-263
378-263
378-104
604-604
577-192
574-115

S 0°12'W 1376.6 1376.7 4.8
 N 89°34'W 2635.0 19.7 2635.0
 N 0°29'E 1346.6 1346.5 11.3
 N 89°46'E 2628.5 10.5 2628.5
 1376.7 1376.7 2639.8 2639.8
 N 89°46'E 1301.1 5.3 1302.1
 S 87°26'E 1328.2 59.7 1327.9
 N 88°49'W 2629.5 54.4 2629.0

T 9 S
 R 2 W

Sec 32
 Sec line bet
 32 & 35

There seems to be an over lap on land divided by
 "Madison Smith land in NW 4 sec 4 T 9 S R 2 W
 Sec 32

See Culver to S.C.L. Co herewith attached

29292
 28748
 544

20

5416
 2708
 2689
 19

132812
 166

2902
 8145135
 8145135

2902
 13968 3 18 13529

527
 2005
 5

53
 53
 265
 261
 291

N 89°59'E 1070.0 3 1070.0
 N 88°33'E 249.1 6.3 249.0
 S 89°43'W 1319.0 6.6 1319.0
 6.6 6.6 1319.0 1319.0
 S 88°51'E 1037.9 20.8 1037.7
 S 89°44'E 273.8 1.3 273.8
 N 89°02'W 1311.5 22.1 1311.5
 22.1 22.1 1311.5 1311.5
 N 6°19'W 30.3 30.1 3.3
 S 1°06'W 1260.0 1259.8 24.2
 S 81°02'E 13.2 2.1 13.0
 S 0°40'W 1231.9 1231.8 14.5
 1261.9 1261.9 27.5 27.5
 N 1°39'E 236.7 236.6 6.8
 N 0°36'E 1159.2 1159.1 12.1
 N 0°39'E 1191.1 1191.0 13.3
 N 0°08'E 147.1 147.1 3
 S 0°41'W 2734.0 2733.8 32.5
 N 0°03'W 1338.2 1338.2 1.4
 N 0°41'E 2734.0 2733.8 32.5
 S 89°57'E 1309.4 1.1 1309.4
 S 0°11'W 1367.4 1367.4
 N 89°48'E 2659.5 9.4 2659.5
 N 89°43'E 1319.0 6.6 1319.0
 S 89°02'E 1311.5 22.1 1311.5
 S 0°13'E 1369.5 1369.5 5.2
 N 89°01'W 1326.5 22.8 1326.3
 S 0°40'W 1332.2 1332.1 15.5
 S 89°48'W 5293.9 18.6 5293.9
 411084 11086637.1 6637.1

T 9 S R 2 W
 Sec 28
 1/16 line W-S
 Sec 27 1/16 line
 W-S

Sec 28 - 1/16 line
 from 2" Iron pipe
 south
 1231.9
 30.1
 70.2
 1332.2

Sec 28-29
 Sec line from
 Cor. 28 29
 33 32 N. 1/2 mile

adjusted prop
 M.S.

1/16 line south
 of N 1/2 N 1/2
 Section 33
 T 9 S R 2 W

S 89°36'W 2638.5 18.4 2638.4
 N 1°00'W 5269.5 5268.7 91.9
 N 87°29'E 1375.1 60.4 1373.8
 N 87°29'E 1375.1 60.4 1373.8
 S 0°11'W 5371.1 5371.1 17.3
 5389.5 2747.6 1747.6

T 9 S R 2 W
 Secs 31-32
 Ko 16
 Adjusted
 Sec line bet.

S 87°29'W 1375.1 60.4 1373.8
 S 1°00'E 5269.5 5268.7 91.9
 N 89°36'E 1345.2 9.4 1345.2
 N 0°41'W 5319.7 63.3
 5329.1 5329.1 1437.1 1437.1

Sec 31
 Dividing east
 1/2 of sec 31. with
 N+S line

South 2655.3 ✓ 2655.3
 West 2898.7 ✓ 2898.7
 S 49°30'W 179.6 ✓ 116.6 139.5
 S 0°29'W 2638.4 ✓ 2638.3 22.2
 S 0°29'W 1346.6 ✓ 1346.5 11.3
 S 88°48'E 609.1 ✓ 12.7 609.0
 S 89°48'E 2081.0 732081.0
 N 0°12'E 1376.6 1376.7 4.8
 N 43°3'E 5416.8 5400.0 373.8
 6776.4 6776.7 3068.7 3068.7

Center line
 Sec 32
 N+S line

N 0°48'W 3464.8 3464.5 48.4
 N 53°25'E 674.9 402.2 541.9
 S 0°03'W 1014.8 1014.8 9
 S 2°52'E 103.0 102.9 5.1
 S 10°16'W 2793.7 2749.0 497.7
 3866.7 3866.7 5470 5470

Sec. line bet.
 32-33

S 88°48'E 609.1 12.7 609.0
 S 89°48'E 2026.0 702026.0
 N 89°34'W 2635.1 19.7 2635.0
 N 43°3'E 1361.3 1357.0 108.0
 S 89°26'E 1328.0 1311327.9
 S 45°00'W 1385.8 944.6 944.6
 S 50°58'W 1356.0 398.3 435.9 491.3
 1356.0 1356.0 1435.9 1435.9

N 46°5'E 1966.2
 N 87°26'W 1328.0 131 1327.9
 S 43°3'W 2722.6 2713.9 216.0
 N 89°48'E 1437.4 50 1437.4
 S 2°16'W 2697.9 2695.8 106.5
 2713.9 1543.9

N 43°3'E 1361.3 1357.0 108.0
 S 89°26'E 1328.0 1311327.9
 S 2°16'W 438.9 438.5 17.2
 N 89°26'W 439.6 43 439.6
 S 47°06'W 1336.6 909.7 979.1
 1361.3 1435.9
 N 88°32'E 2350.8 60.2 2350.
 S 67°40'E 301.6 714.6 2790
 S 88°49'E 2629.5 544 2629.0
 1146 1146

N 88°32'E 1320
 N 88°32'E 1030.8 264 1030.5
 S 67°40'E 301.6 114.6 2790
 S 86°12'E 1332.4 88.2 1309.5
 1146 1146 1309.5 1309.5

T 10 S
 R 2 W
 1/16 mi S. of N
 1/2 NW 4 Sec 5

Cen. Line (N+S)
 NE 32

T 9 S R 2 W

Sec 32
 Adjoining
 Valencia
 Property

S 0°11'W 2685.5	2685.5	8.6
S 0°29'W 1346.6	1346.5	11.3
S 88°48'E 609.1	12.7	609.0
S 89°48'E 3758.1	13.1	3758.1
N 89°16'E 932.2	11.9	932.1
N 0°01'E 803.2	803.2	2
N 2°59'E 515.1	514.4	268
N 10°16'E 2793.7	2749.0	497.7
S 89°48'W 5804.0	20.7	5804.0
4078.5	4078.5	5823.9

S 0°03'W 1558.8	1558.8	14
S 0°03'W 1014.8	1014.8	9
S 2°52'E 103.0	102.9	5.1
N 0°03'W 2676.5	2676.5	28
2676.5	2676.5	5.1

N 0°03'W 2676.5	2676.5	28
N 89°26'W 2656.0	27.5	2656.0
S 44°31'E 3792.2	2704	2658.8
2704.0	2658.8	

S 0°03'W 1298.7	1298.7	1.1
S 2°49'W 69.8	68.7	34
S 0°11'W 1367.4	1367.4	4.5
1367.4	1367.4	4.5

N 0°11'E 1367.4	1367.4	4.5
S 89°57'E 1062.3	9	1062.3
N 89°48'E 1592.3	5.6	1592.3
S 0°01'E 1362.7	1362.7	4
S 89°48'W 2659.5	9.4	2659.5
1373.0	1373.0	2659.5

T9 S R2 W
 Sec 32
 East + west 1/4 line
 M-S Prop.

M-S Survey
 32 + 33
 Sec line
 Correction

Sec 30
 Diagonal
 across NE 1/4 sec

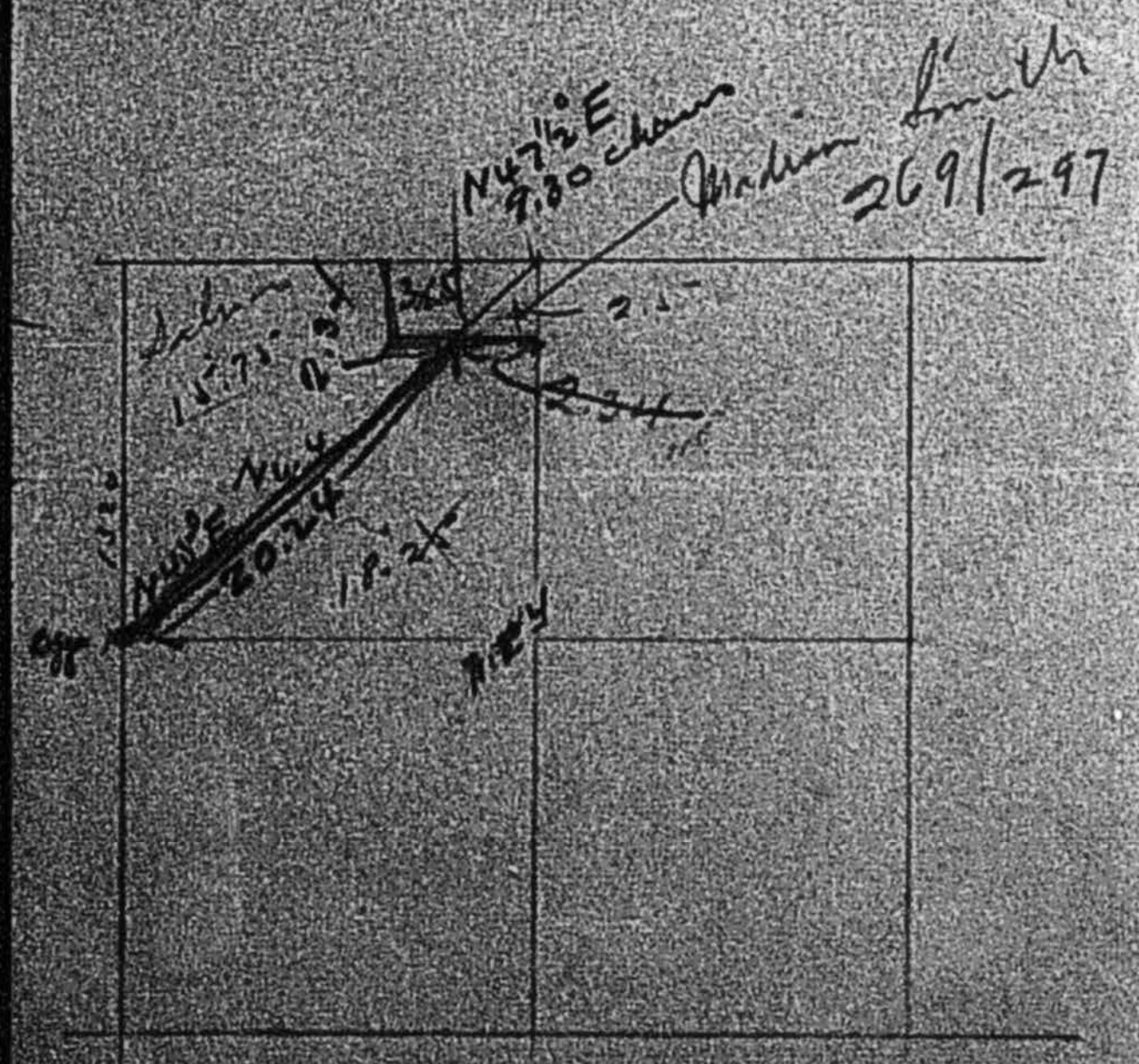
Sec 28
 1/6 line

Sec 28
 1/6 line
 Sec 33

Callahan
 to
 SCL Co
 Jan 29-1963

Parcel 23 -
 NW 1/4 SE 1/4 -
 S 2 NW 1/4
 2 3 4 1/2 A NW 1/4 SE 1/4
 NW 1/4 NE 1/4 - all of
 NW 1/4 NE 1/4 S of the following line

Beginning at the SW Cor of NW 1/4 NE 1/4. Thence N 45° E
 20.24 chains to a point 2.34 chains East of SW Cor
 of Hayes Tract - thence East to East line of NW 1/4 NE 1/4
 Sect 32 T9 S R2 W



20 800 28.28
 48 1400
 562 11600 20.24
 1124 930
 564 147600 2954
 2828
 1.26
 66
 756
 756
 8316

$\begin{array}{r} 8917 \\ 5029W \\ \hline 58848E \\ \hline 58948E \end{array}$

Sheet #1 - Sutherland Conduct Ramona Canal									
Sta	Course	Dist.	N	S	E	W	+ N	+ E	
1	N26°02'W	278	2672			768	2672	- 768	✓
3	N19°00'E	133	1258		433		+ 393 0	- 83 5	✓
4	N12°35'E	112	1093		244		+ 502 3	- 91	✓
5	N41°21'E	123	923		813		+ 594 6	+ 72 2	✓
6	N38°04'E	197	1551		1215		+ 749 7	+ 193 7	✓
7	N6°29'E	67	666		76		+ 816 3	+ 201 3	✓
8	N4°31'W	94	937			74	+ 910 0	+ 193 9	✓
9	N26°34'W	140	1252			624	+ 1035 2	+ 131 3	✓
10	N43°06'W	421	3074			2877	+ 1342 6	- 156 4	✓
12	N27°35'W	183	1622			847	+ 1504 8	- 241 1	✓
13	N33°31'W	116	967			640	+ 1601 5	- 305 1	✓
14	N50°54'W	51	322			396	+ 1633 7	- 344 7	✓
15	N66°16'W	354	1425			3241	+ 1776 2	- 668 8	✓
16	S71°17'W	141		452		1335	+ 1731 0	- 802 3	✓
17	S34°12'W	72		595		405	+ 1671 5	- 842 8	✓
18	S50°04'W	209		1342		1603	+ 1537 8	- 1003 1	✓
20	S34°22'W	77		636		435	+ 1473 7	- 1046 6	✓
21	S48°42'W	99		653		744	+ 1408 4	- 1121 0	✓
22	S23°59'W	68		621		276	+ 1546 3	- 1148 6	✓
23	N60°12'W	1236	6143			10726	+ 3960 6	- 222 2	✓
24	N78°26'W	125	251			1225	+ 2785 7	- 2343 7	✓
25	S71°37'W	487		1536		4631	+ 1832 7	- 2805 8	✓
27	S65°57'W	120		570		1279	+ 1775 1	- 2933 7	✓
28	S55°03'W	103		545		874	+ 1738 6	- 3021 7	✓
29	S31°11'W	204		1949		1440	+ 1573 7	- 3165 7	✓
30	N55°37'W	207	223			1997	+ 1546 0	- 826 8	✓
31						2781	36 27		

Sheet #2. Sutherland								Sheet #3 Sutherland + N + E							
Sta	Course	Dist	N	S	E	W	Σ Lat Σ Long	Sta	Course	Dist	N	S	E	W	Σ Lat Σ Long
44	S76°08'W	77		18.5			74.8 + 1527.5 ✓ - 3439 6	121	N46°40'W	284	194.9				2066 - 1955.9 - 10282.3 ✓
45	S46°12'W	133		92.1			96.0 + 1435.4 ✓ - 3535 6	122	N69°45'W	185	64.0				1736 - 18.91 9 - 10455.9 ✓
46	S83°19'W	121		14.1			120.2 + 1425.5 ✓ - 3655 8	123	S36°59'W	156		124.6			938 - 2016.5 - 10549.7 ✓
48	S81°12'W	102		15.6			100.8 + 1405.7 ✓ - 3756 6	124	S21°52'W	1096		1017.1			4082 - 3033.6 - 10957.9 ✓
49	S55°04'W	298		170.6			234.3 + 1235.7 ✓ - 3990 9	125	S25°03'E	390		353.3	165.1		- 3386.9 - 10792.8 ✓
51	S43°43'W	69		49.9			47.7 + 1185.4 ✓ - 4038 6	126	S28°34'W	1119		979.6			5408 - 4366.5 - 11333.6 ✓
52	N67°45'W	1234	467.2				1142.1 + 1652.4 ✓ - 5180 7	127	N17°51'W	197	187.5				604 - 4179.0 - 11394.0 ✓
63	N88°00'W	286	10.0				285.8 + 1462.4 ✓ - 5466 5	128	S48°56'W	72		47.3			543 - 4226.3 - 11448.3 ✓
65	S44°02'W	111		79.8			77.2 + 1582.6 ✓ - 5543 7	128A	S48°56'W	40		30.2			263 - 4256.5 - 11474.6 ✓
66	S34°11'W	203		167.9			114.1 + 1414.7 ✓ - 5657 8	129	S39°19'W	78		60.3			49.4 - 4316.8 - 11524.0 ✓
68	S25°18'W	526		475.5			224.8 + 1939.2 ✓ - 5882 6	130	S26°44'W	88		78.6			396 - 4395.4 - 11563.6 ✓
72	S78°31'W	1760		350.4			1724.8 + 588.8 ✓ - 7607 4	131	S6°14'W	106		105.4			11.5 - 4500.8 - 11575.1 ✓
85	S51°42'W	99		61.4			77.7 + 527.4 ✓ - 7685 1	133	S4°31'E	97		96.7	76		- 4597.5 - 11567.5 ✓
86	S22°40'W	73		67.4			28.1 + 460.2 ✓ - 7713 2	135	S48°51'E	233		153.3	175.4		- 4750.8 - 11392.1 ✓
87	S10°22'W	207		203.6			37.3 + 256.4 ✓ - 7750 5	136	S70°58'E	200		65.2	189.1		- 4816.0 - 11203.0 ✓
89	S67°57'W	945		354.8			875.9 - 78.4 ✓ - 8626 4	137	N81°17'E	181	27.4		178.9		- 4788.6 - 11024.1 ✓
100	S32°42'W	52		43.8			28.1 - 142.2 ✓ - 8654 8	138	S52°19'W	541		330.7			428.2 - 5119.3 - 11452.3 ✓
101	S29°58'W	173		149.9			86.4 - 292.1 ✓ - 8740 9	145	S51°36'W	271		168.3			212.4 - 5287.6 - 11664.7 ✓
103	S15°24'W	60		57.8			15.9 - 349.9 ✓ - 8756 8	147	S38°58'W	368		286.1			231.4 - 5573.7 - 11896.1 ✓
104	S8°23'W	221		218.6			32.2 - 568.5 ✓ - 8789 0	150	S36°39'W	381		305.7			227.4 - 5879.4 - 12123.5 ✓
106	S61°47'W	636		300.7			560.4 - 86.8 ✓ - 9349 4	153	S30°22'W	758		654.0			383.2 - 6533.4 - 12506.7 ✓
111	S47°46'W	146		98.1			108.1 - 96.7 ✓ - 9457 5	157	S17°14'W	601		574.0			178.1 - 7107.4 - 12684.8 ✓
112	S43°17'W	167		123.0			115.9 - 1090.3 ✓ - 9573 4	163	S35°14'W	186		151.6			107.3 - 7259.0 - 12792.1 ✓
113	S23°26'W	68		62.4			27.0 - 1152.5 ✓ - 9600 4	164	S25°26'W	295		266.4			126.7 - 7525.4 - 12918.8 ✓
114	S38°27'W	386		302.3			240.0 - 1455.0 ✓ - 9840 4	165	S9°07'W	252		250.0			31.2 - 7775.4 - 12950.0 ✓
119	S55°30'W	111		62.9			91.5 - 1517.9 ✓ - 9931 7	166	S29°02'W	459		401.3			222.7 - 8176.7 - 13172.7 ✓
120	S12°48'W	649		632.9			143.8 - 2150.8 ✓ - 10075 7	167	S24°05'W	1041		950.4			424.8 - 9127.1 - 13597.5 ✓
120								168							
											473.8	7450.1	716.1	4246.9	

Sta	Course	Dist.	Sheet # 4				Southern Land					
			N	S	E	W	N	S	E	W		
							-91.27	1	-13 597.5			
168	S1°02'W	1172		1171.8		211	-10.298	9	-13618	6	✓	
169	S27°10'W	1248		1110.3		569.8	-11409	2	-14188	4	✓	
170	S16°42'W	1334		1277.7	✓	3833	-12686	9	-14571	7	✓	
171	S32°05'W	799		677.0	✓	4244	-13363	9	-14996	1	✓	
172	S63°46'W	719		317.8	✓	6449	-13681	7	-15641	0	✓	
173	S41°10'W	857		645.1	✓	5641	-14326	8	-16205	1	✓	
174	S12°28'W	904		882.7		1951	-15209	5	-16400	2	✓	
175	S32°03'W	1133		960.3	✓	6012	-16169	8	-17001	4	✓	
176	S25°57'W	1107		995.4	✓	4844	-17165	2	-17485	8	✓	
177	S32°26'W	1290		1088.8		6919	-18254	0	-18177	7	✓	
178	S16°18'W	1110		1065.4	✓	3115	-19319	4	-18489	2	✓	
179	S1°24'E	721		720.8	✓	176	✓	-20040	2	-18471	6	✓
180	S30°55'W	1105		948.0	✓	5677	-20988	2	-19039	3	✓	
181	S64°08'W	1320		575.9	✓	1187	-21564	1	-20227	1	✓	
182	S58°34'W	1214		633.1	✓	10358	-22197	2	-21262	9	✓	
183	S30°25'W	1502		1407.6	✓	5240	-23604	8	-21786	9	✓	
184	S64°01'W	1496		655.4	✓	1344	-24260	2	-23131	7	✓	
185	S37°25'W	1811		1438.4	✓	1100	-25898	6	-24232	1	✓	
186	S62°35'W	1210		550.9	✓	1077	-26249	5	-25309	4	✓	
187	S68°10'W	1727		642.3	✓	1603	-26891	8	-26912	5	✓	
188	S51°39'W	2192		1360.0	✓	1719	-28251	8	-28631	5	✓	
189	S64°09'W	1848		805.8	✓	1663	-29057	6	-30294	6	✓	
190	N83°27'W	1088	124	11		1080	-28933	5	-31375	5	✓	
191	S55°37'W	2360		1332.7	✓	1947	-30266	2	-33323	2	✓	
192	S56°20'W	2066		1145.3	✓	1719	-31411	5	-35042	7	✓	
193	S75°22'W	2416		610.4	✓	2337	-32021	9	-37380	3	✓	
194	S62°05'W	1279		598.8	✓	1130	-32620	7	-38510	5	✓	
195			124	123617	2	176	24920	6				

Sta	Course	Dist	Sheet 5				Southern Land			
			N	S	E	W	N	S	E	W
							-32620.7	-38510.5		
195	N42°09'W	2370	303.2 ✓				2350.5	-32317.5	-40861	0
196	S88°01'W	2358		81.6 ✓			2356.6	-32399.1	-43217	6
197	N53°33'W	2280	1354.6 ✓				1834.0	-31044.5	-45051	6
198	N47°33'W	1132	764.0 ✓				835.3	-30280.5	-45886	9
199	N60°33'W	2640	1298.0 ✓				2298.9	-28982.5	-48185	8
			3719.8	81.6			967.53			
			3638.2							

N S E W $\frac{1}{4}$ cor. near Dam
Sutherland

358
67

0+00	S 49° 56' E	1402	921	1064	-921	11064
	S 56° 11' W	130.5	726	1084	-1647	-20
	S 58° 42' W	1027	534	878	-2181	-898
	S 30° 42' W	800.0	687.9	408.4	-906.0	-498.2 $\frac{1}{4}$ cor.
	S 30° 36' W	10738	8139	604.6		
	Sec cor	$\frac{20-21}{16-17}$	906	550	255	545
Sta 16	N 10° 19' E	335.0	3296	60.0		
	$\frac{1}{4}$ cor	Int. 20 + 17				
Sta 48	N 2° 37' E	678.0	6773	31.0		
	Sec cor	$\frac{24-19}{25-30}$				
Sta 124	S 64° 53' W	308	1307	278.9		
	$\frac{1}{4}$ cor	Int 24 + 19	R 1 + 2 E			
Sta 136	S 7° 51' E	1183	1171.9	161.6		
	$\frac{1}{4}$ cor	Int 18 + 13				
Sta 167	S 72° 59' W	1006.	2944	962.0		

Line to Hamilton Base

		N	S	E	W
Sta 183	N 51° 15' W	736	460.7		574.0
	Line to	2,	3 x 3	Stakes	
Sta 194	S 89° 23' W	283	3.0		283.0
	Line to fence + sec. cor.				
Sta 198	N 79° 50' W	486	85.8		478.4
" 198	S 84° 58' E	1130	97.8	1125.8	
	N 88° 56' W	647.5	12.0		647.4
		97.8	97.8	1125.8	1125.8

			N	S	E	W
	S 65° 41' W	455		187.4		416.6
	N 85° 31' E	1900	148.5		1894.2	
196 a-b	N 88° 30' W	1478	38.9			1477.6
	S 85° 31' W	1900		148.5		1894.2
	N 88° 01' E	2358	81.6		2356.6	
	S 44° 54' E	337		238.7	237.9	
196 b 197 a	N 66° 25' W	764	305.6			700.3
	N 44° 54' W	337	238.7			237.9
	S 67° 01' E	1300		507.6	1196.8	
197 a-b	N 79° 26' W	1008				
	N 74° 20' W	896	268.9			958.9
	N 67° 01' W	1300	507.6			1196.8
	S 53° 33' E	2280		1354.6	1834.0	
	N 36° 27' E	30	24.1		17.8	
197 b 198 a	N 38° 31' W	1052	8.229			6550
	S 36° 27' W	30		24.1		17.8
	S 41° 33' E	280		209.5	185.7	
198 a-b	N 35° 42' W	288	233.6			167.9
	N 41° 33' W	280	209.5			185.7
	S 51° 03' E	920		578.4	715.5	
198 b-c	S 55° 09' W	646	368.9			529.8
	N 51° 03' W	920	578.4			715.5
	S 47° 33' E	1132		764.0	835.3	
	S 60° 33' E	50		24.6	43.5	
	N 37° 50' W	266	210.2			163.3
	N 60° 33' W	2600				

Ed Fletcher Papers

1870-1955

MSS.81

Box: 51 Folder: 12

**Business Records - Water Companies -
Volcan Land and Water Company - San
Dieguito System - Ramona Canal - Notes**



The Library
UC SAN DIEGO

Copyright: UC Regents

Use: This work is available from the UC San Diego Libraries. This digital copy of the work is intended to support research, teaching, and private study.

Constraints: This work is protected by the U.S. Copyright Law (Title 17, U.S.C.). Use of this work beyond that allowed by "fair use" requires written permission of the UC Regents. Permission may be obtained from the UC San Diego Libraries department having custody of the work (<http://libraries.ucsd.edu/collections/mscl/>). Responsibility for obtaining permissions and any use and distribution of this work rests exclusively with the user and not the UC San Diego Libraries.