

**REPORT AND INDEX OF
UNDERWAY MARINE GEOPHYSICAL DATA**

TERA EXPEDITION

LEG 1
=====

R/V Thomas Washington

(Issued May 1991)

San Diego, California (26 March 1991)
to
Manzanillo, Mexico (2 May 1991)

Chief Scientist:

John Orcutt (Scripps Institution of Oceanography)

Resident Marine Technician - Seth Mogk

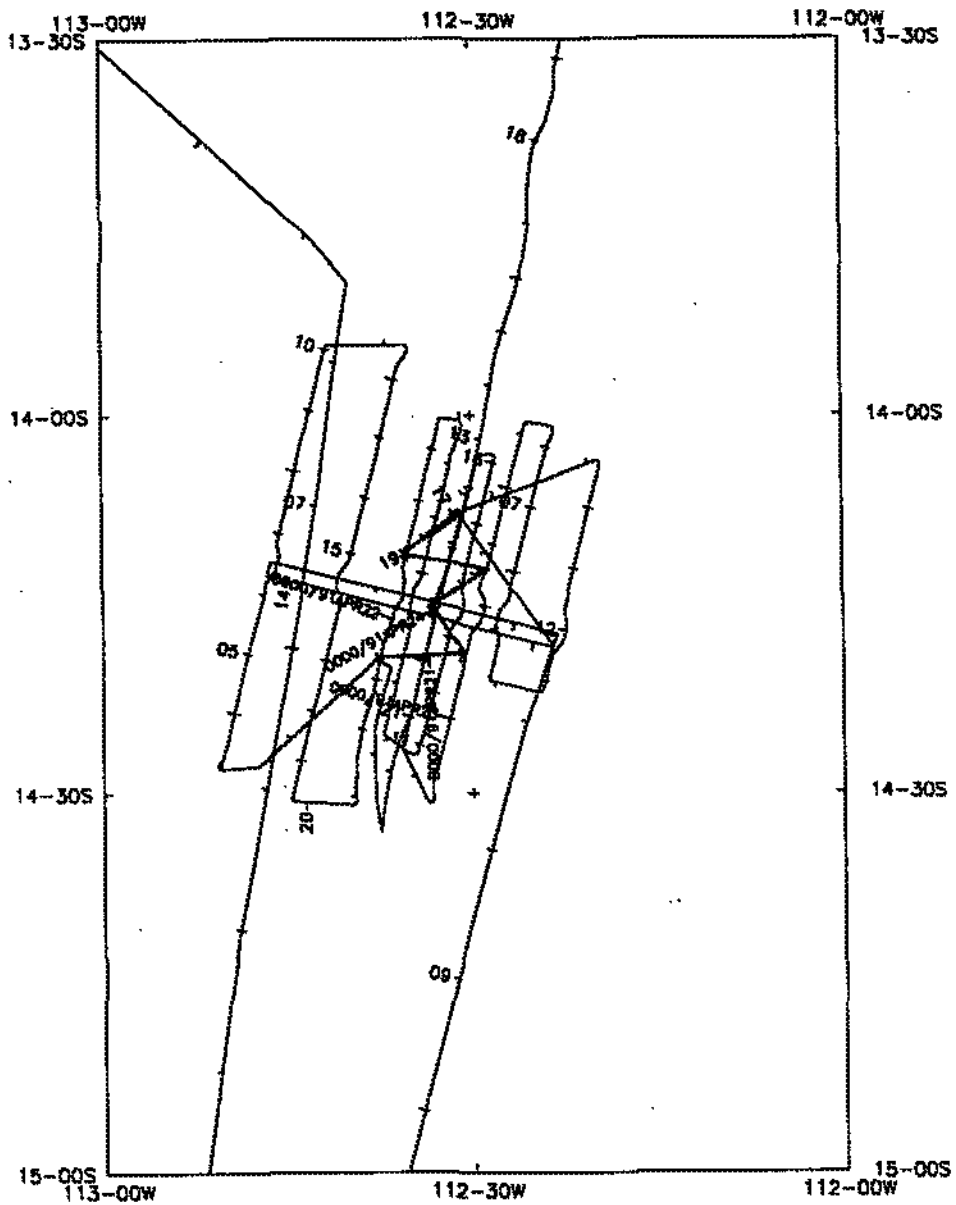
Transit Mode - No Sea Beam/Underway Data Processor on board

Post-Cruise Processing and Report Preparation by the
Geological Data Center, Scripps Institution of Oceanography
La Jolla, California 92093

Data Collection and Processing Funded by:
NSF Grant Number OCE89-11587

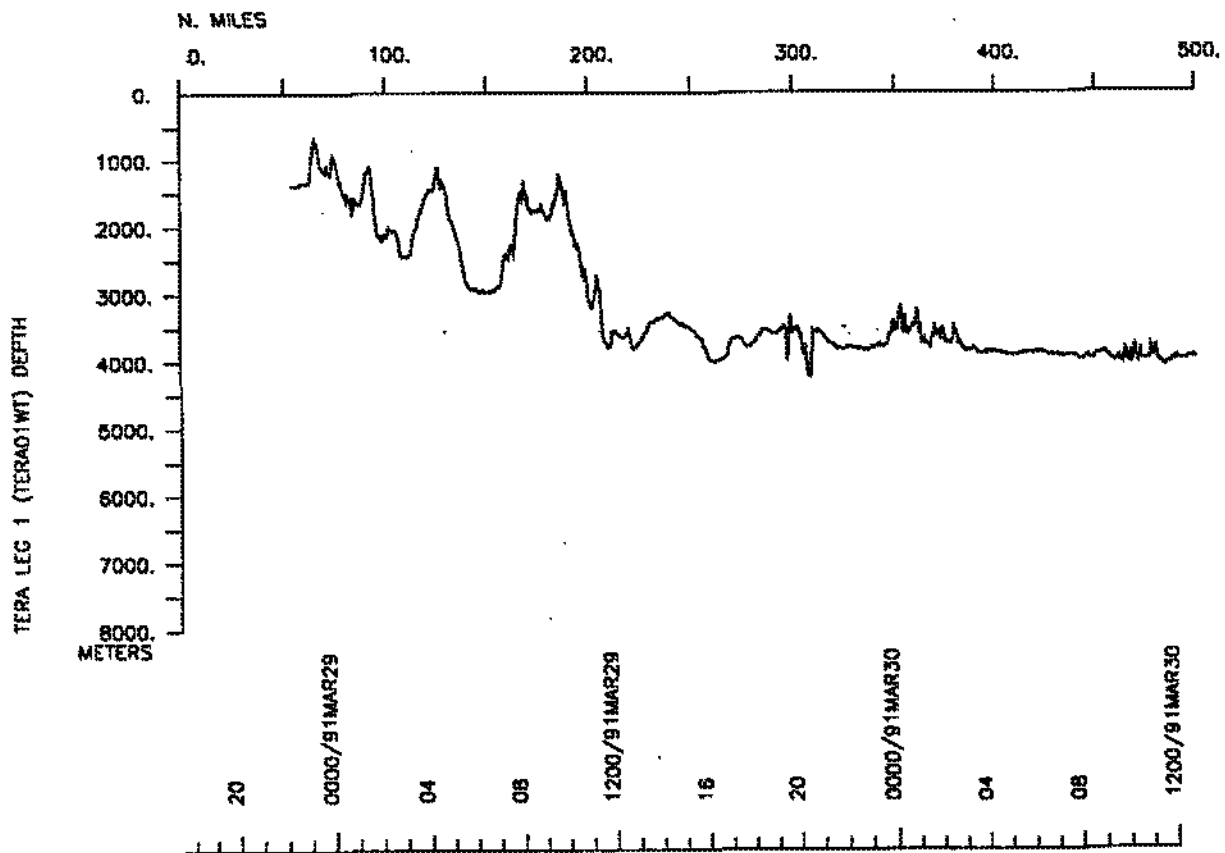
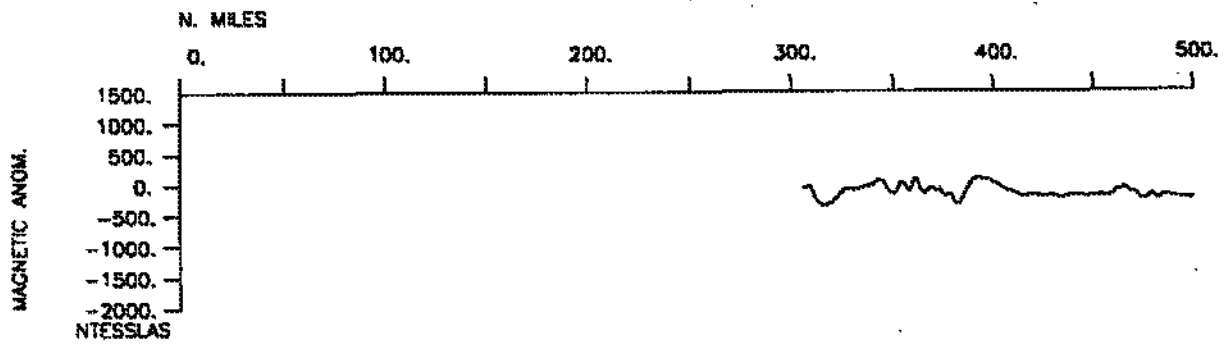
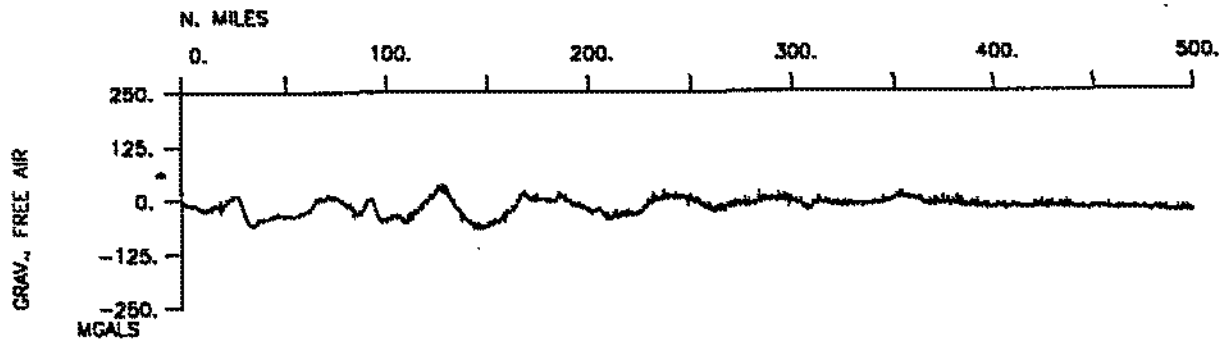
NOTE: This is an index of underway geophysical data edited and processed after the completion of the cruise leg and is intended primarily for informal use within the institution. This document is not to be reproduced or distributed outside Scripps without prior approval of the chief scientist or the Geological Data Center, Scripps Institution of Oceanography, La Jolla, California 92093.

GDC Cruise I.D.# 252

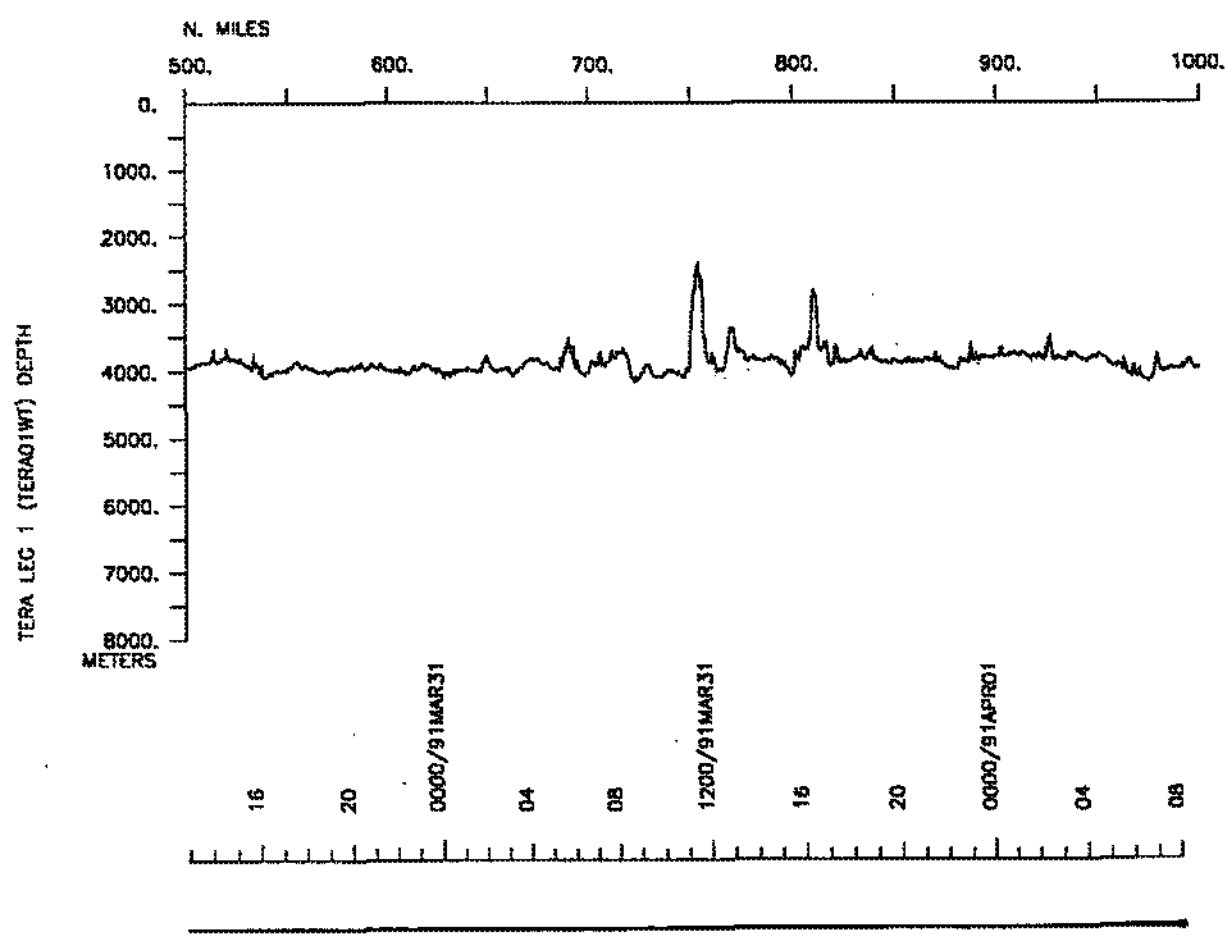
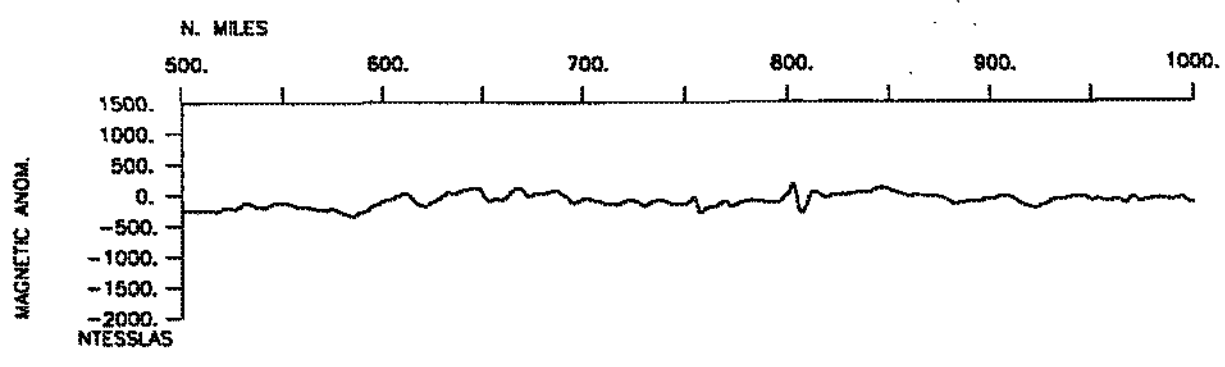


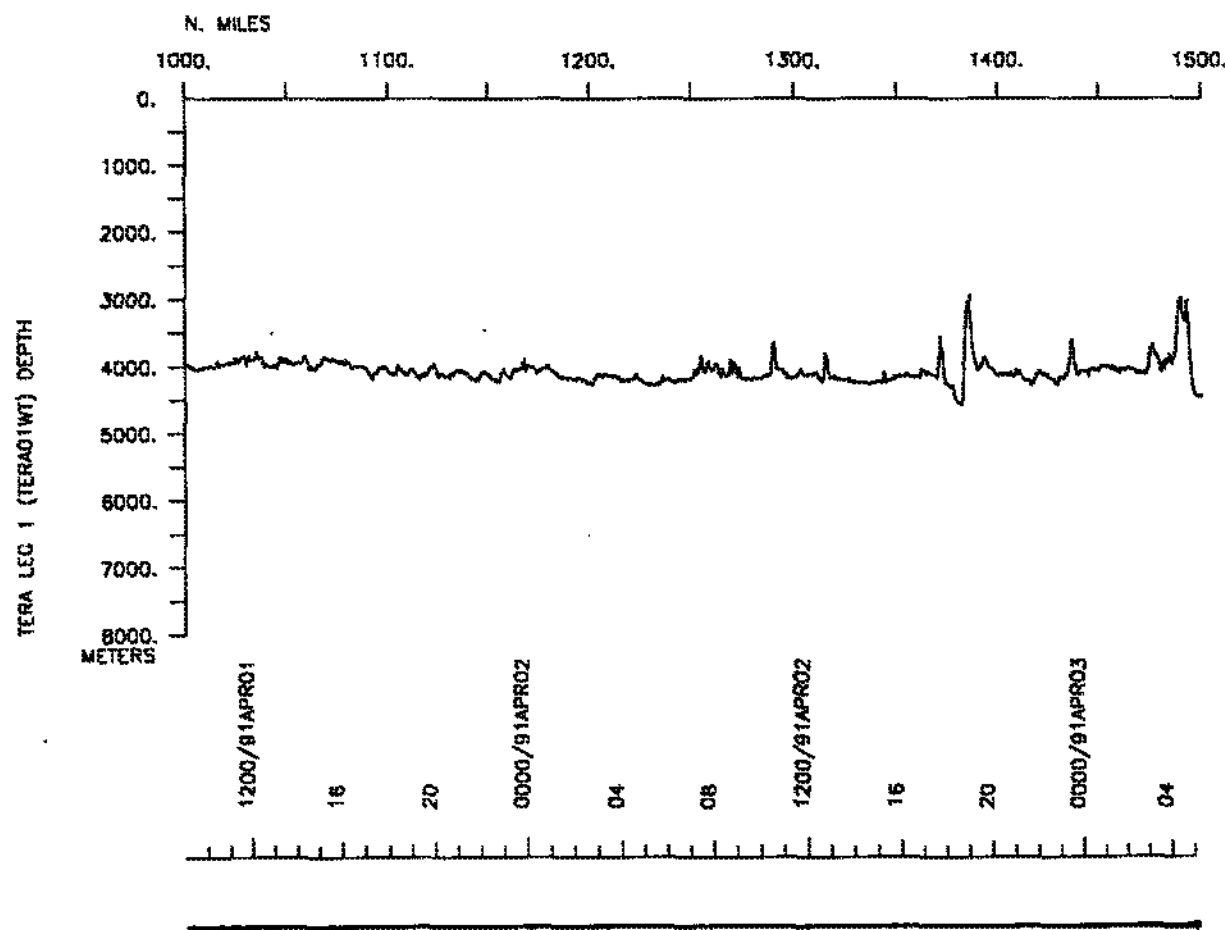
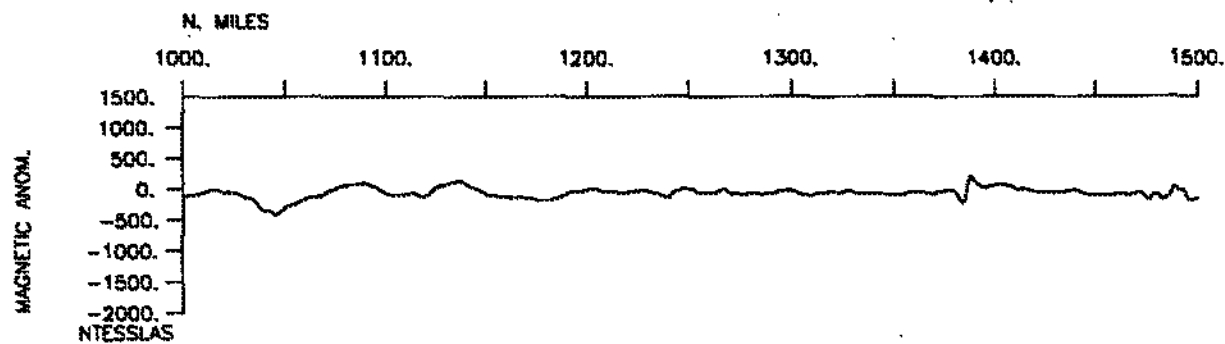
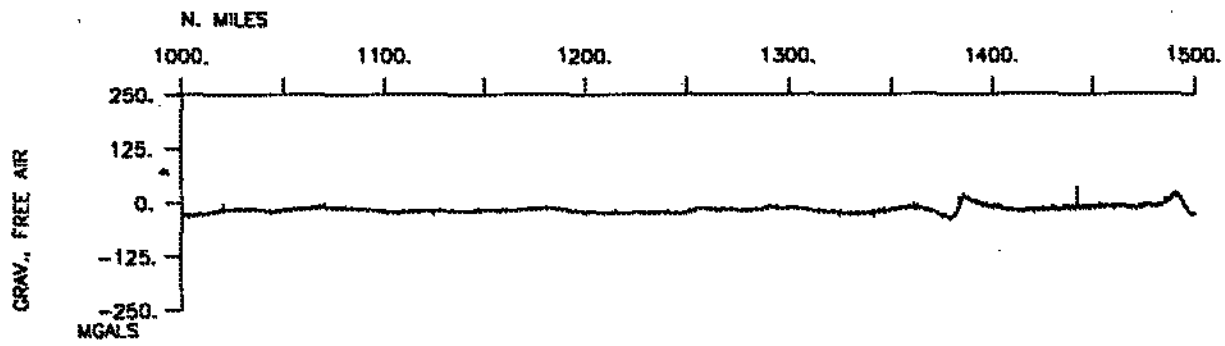
TERA LEG 1 (TERA01WT)
Survey Area C

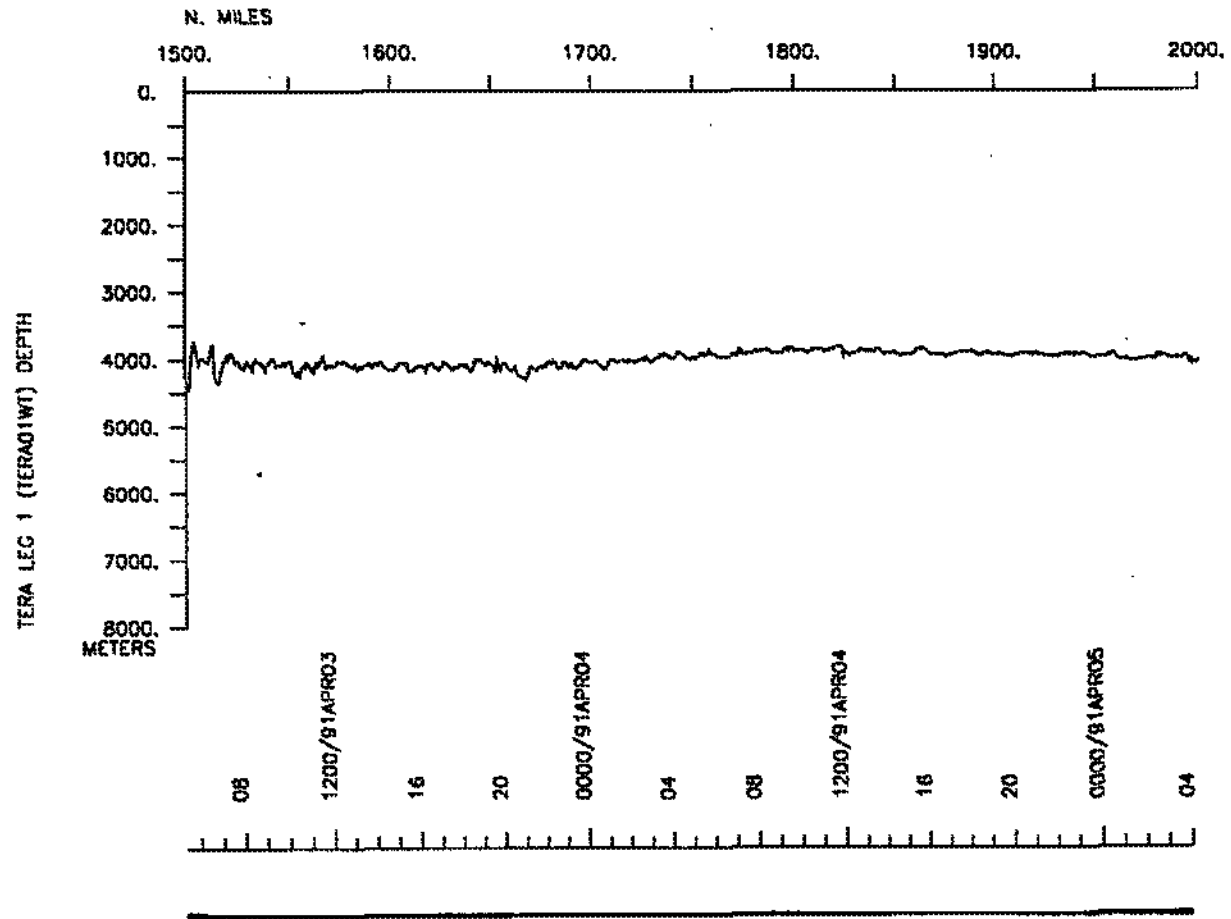
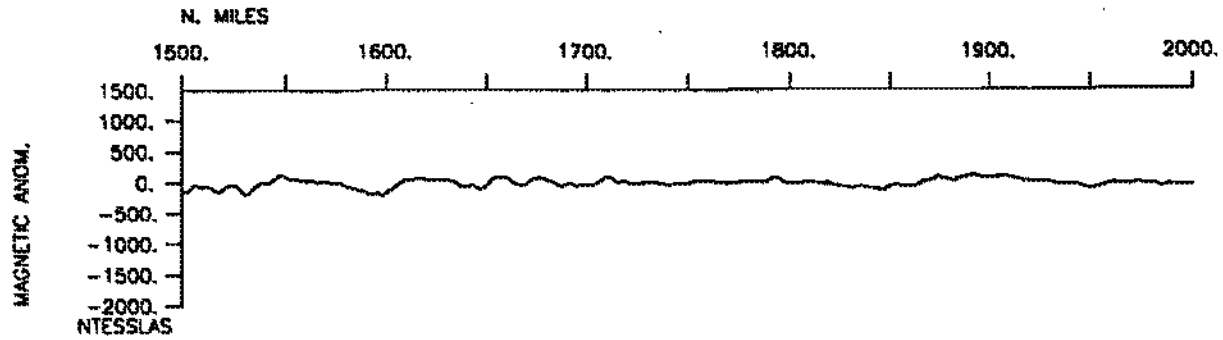
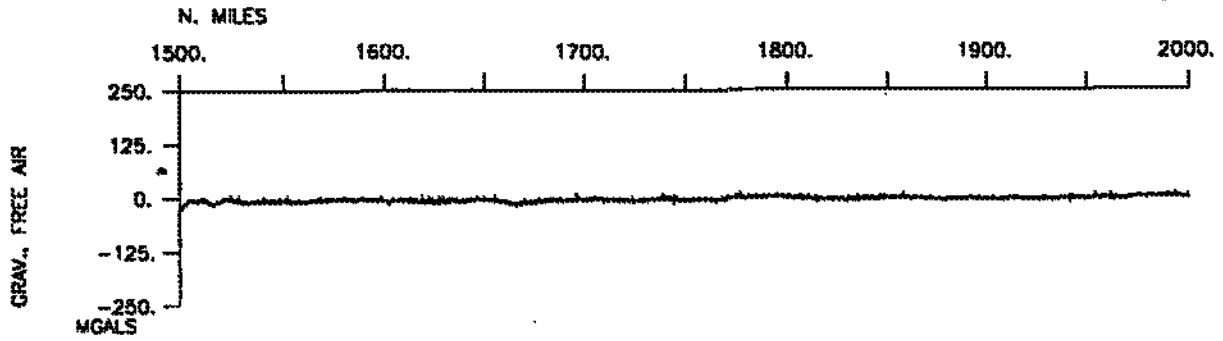
*

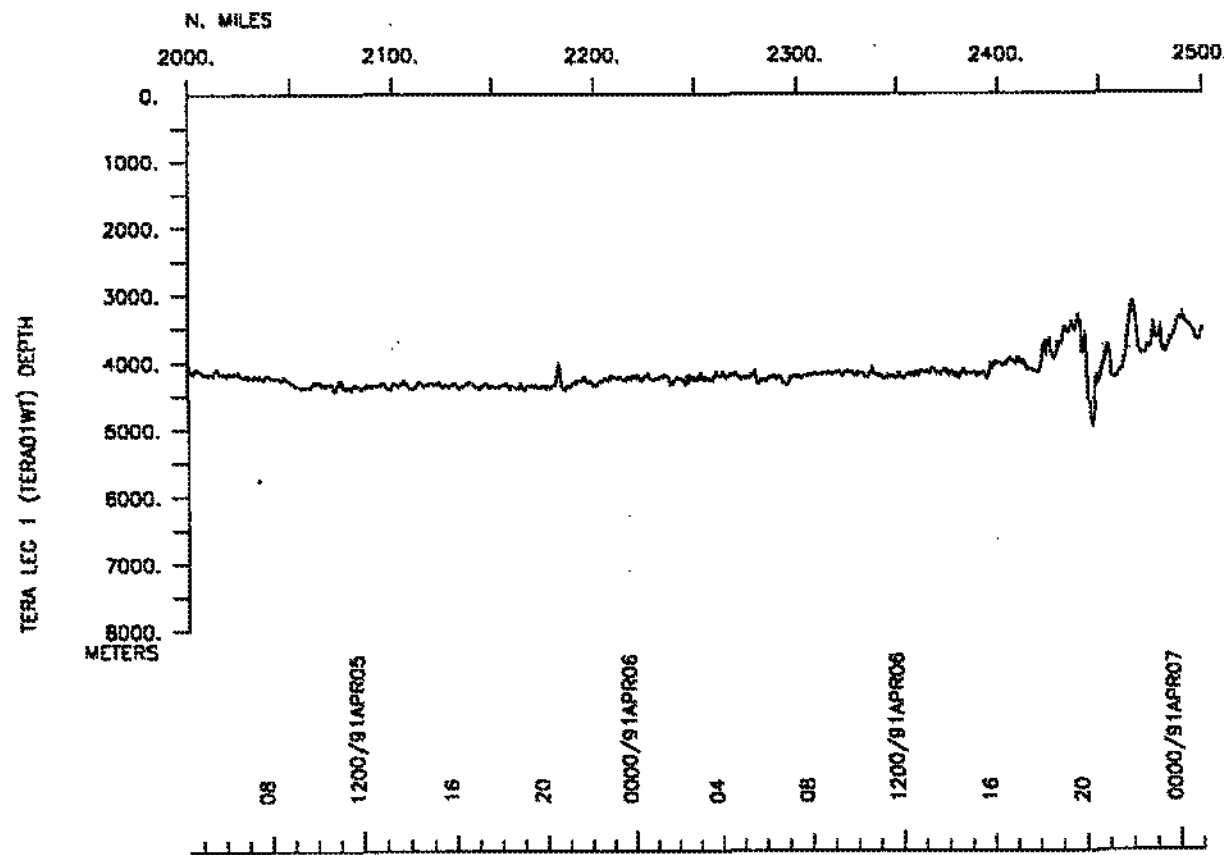
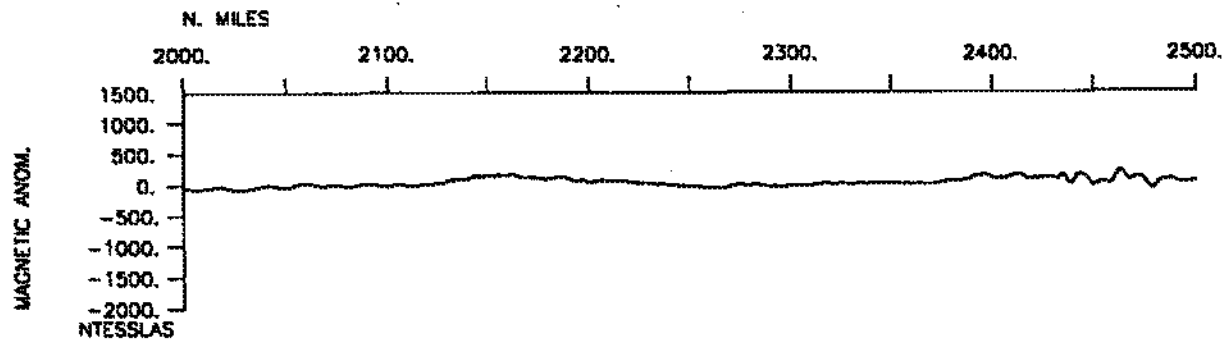
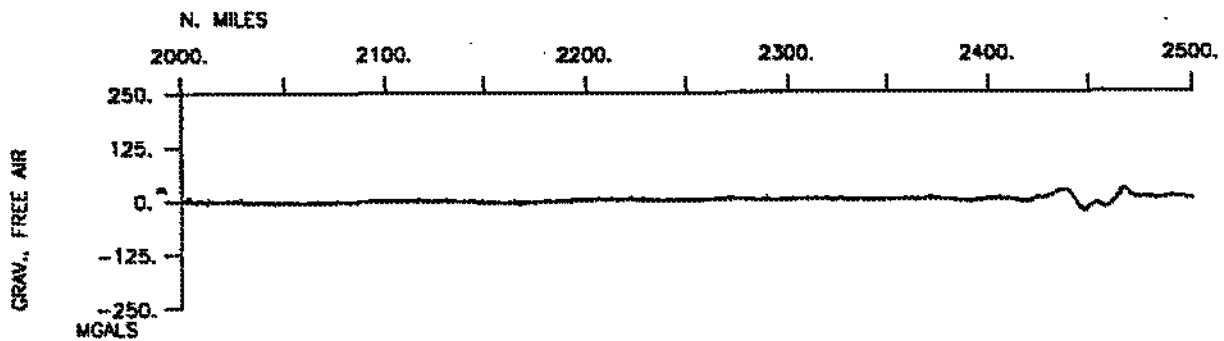


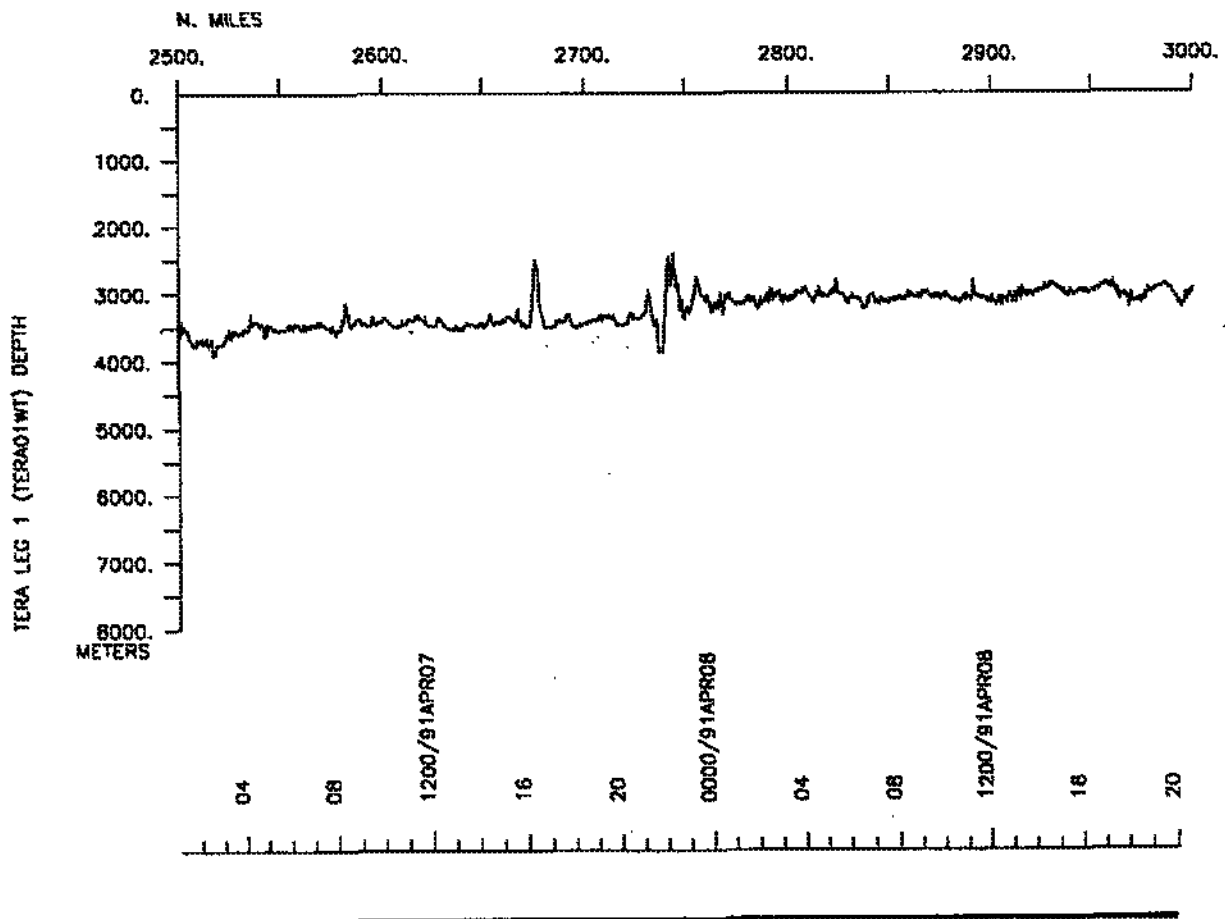
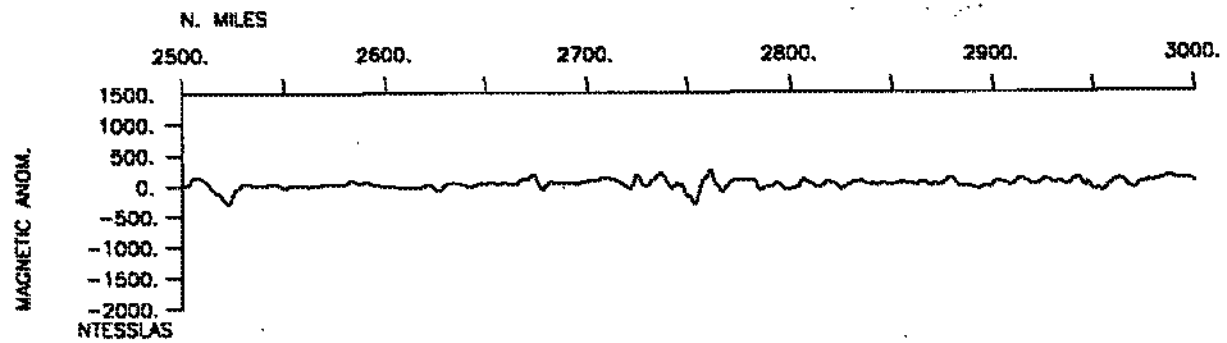
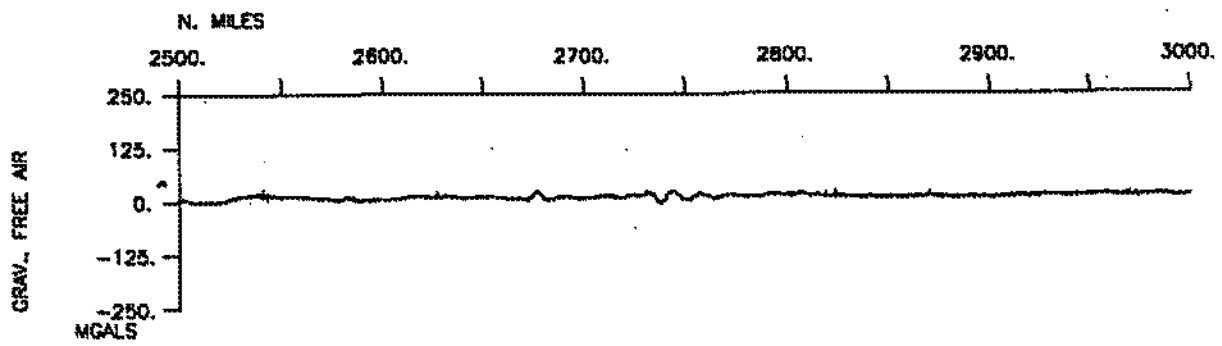
SEA BEAM

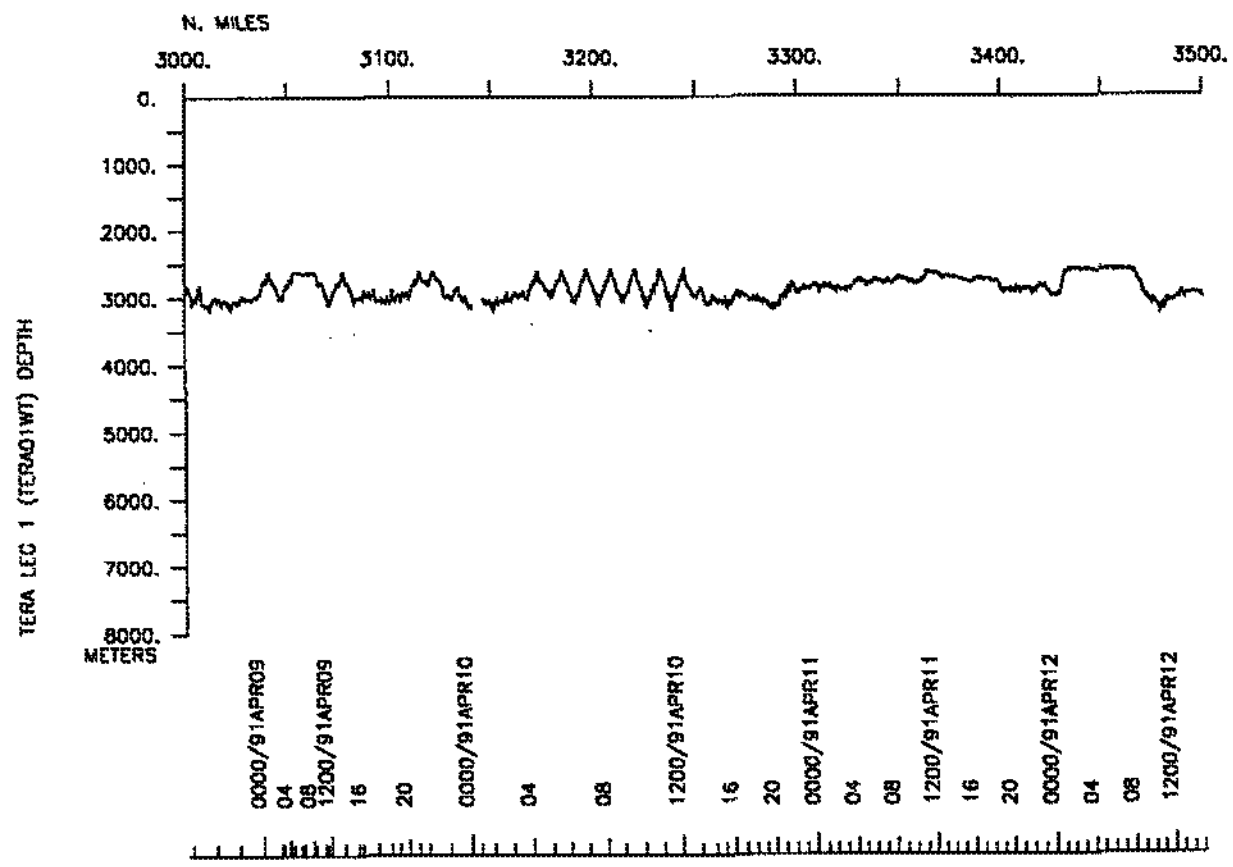
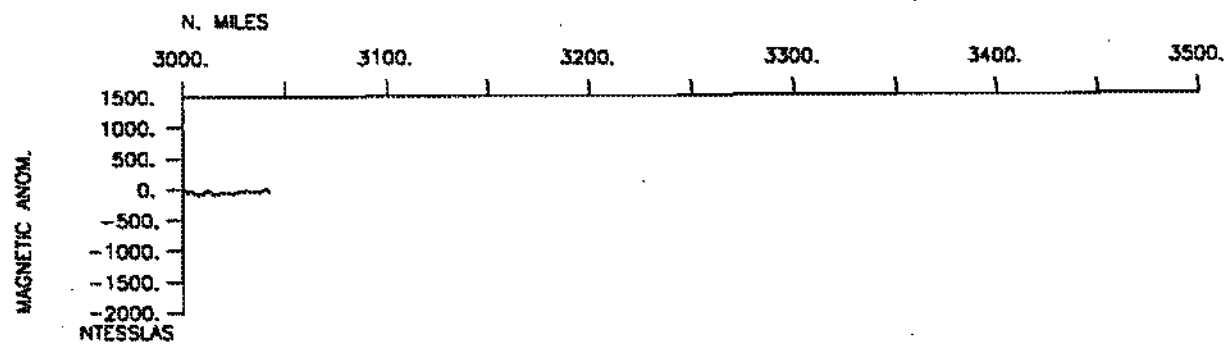
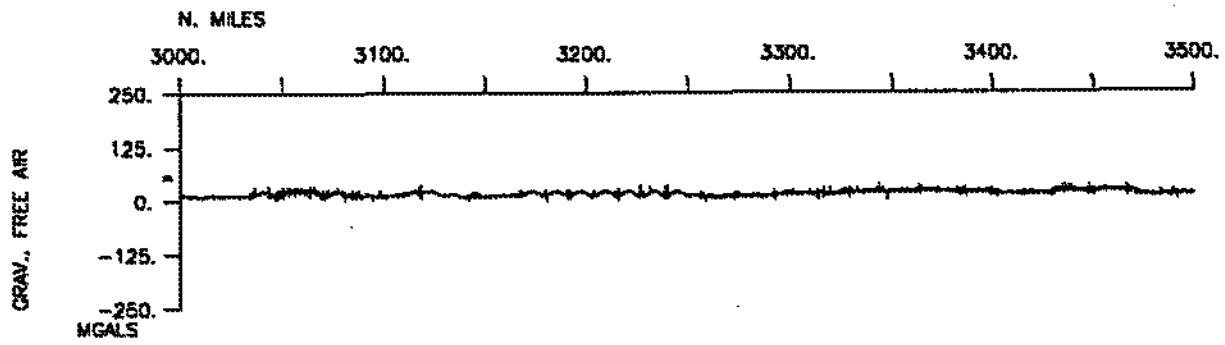


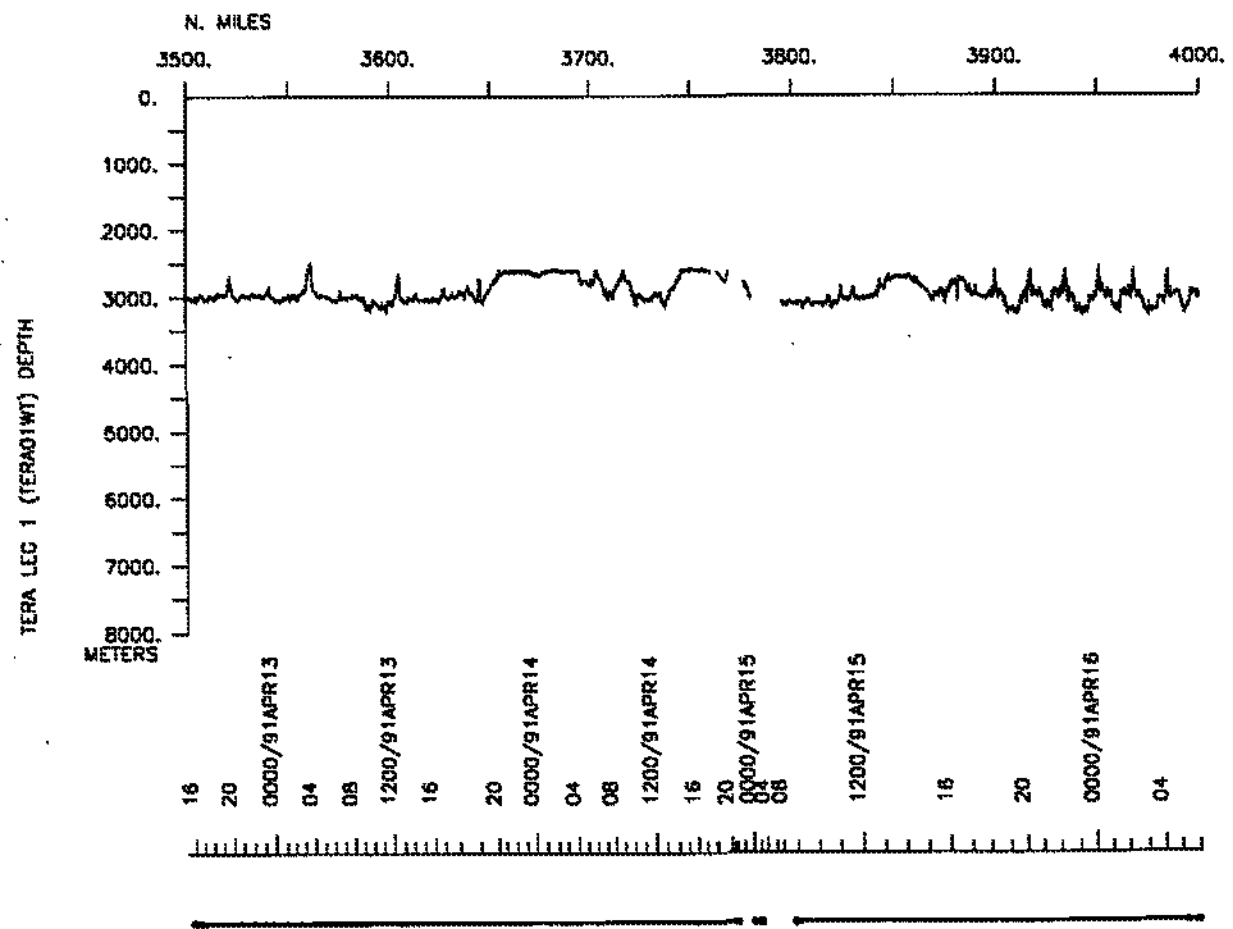
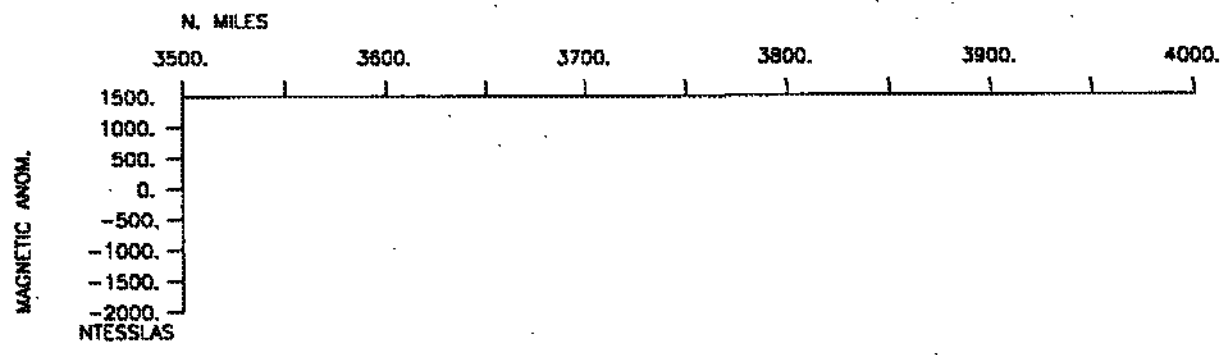
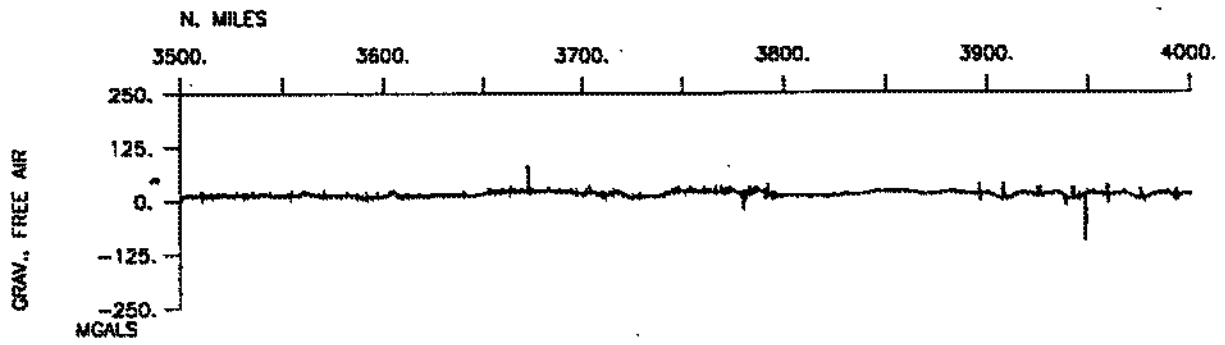


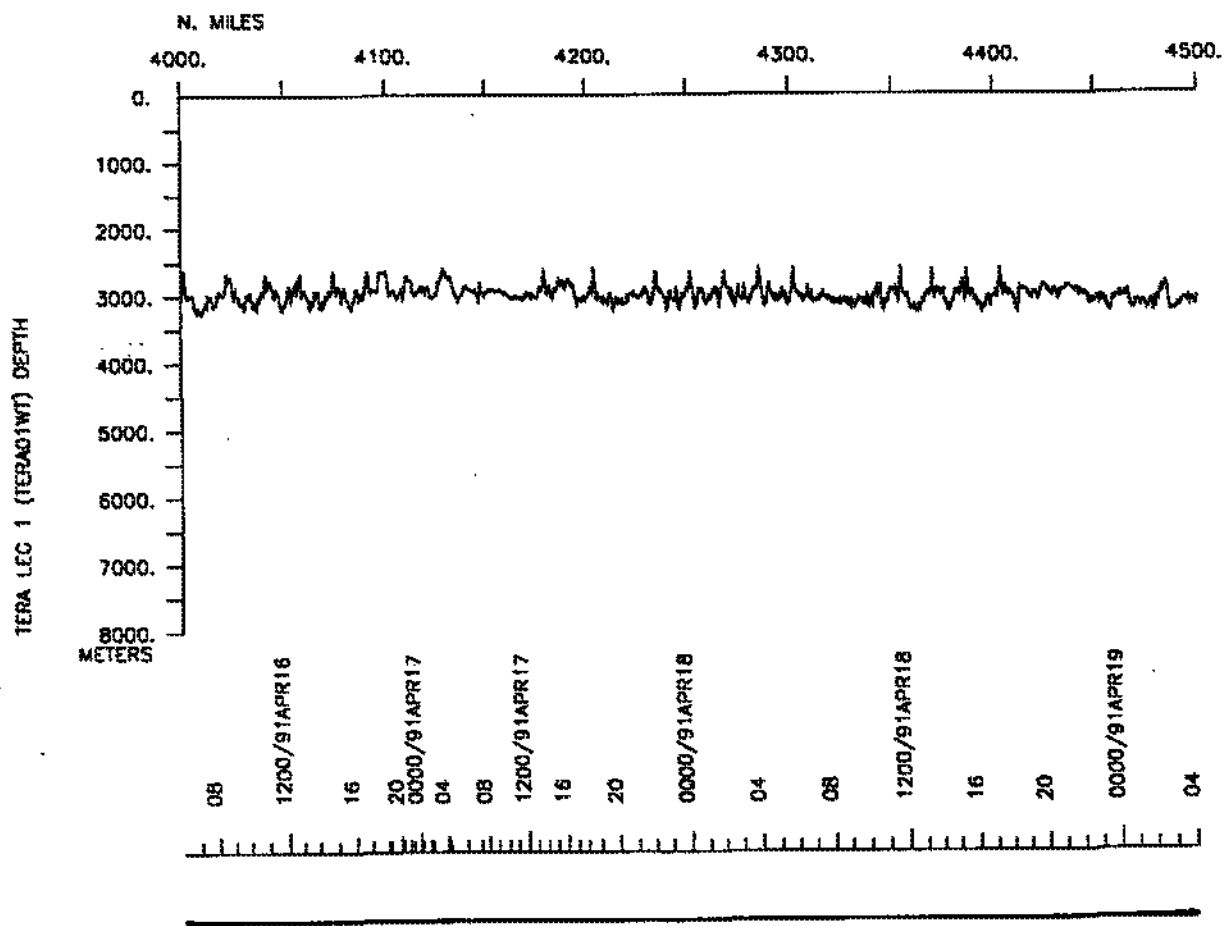
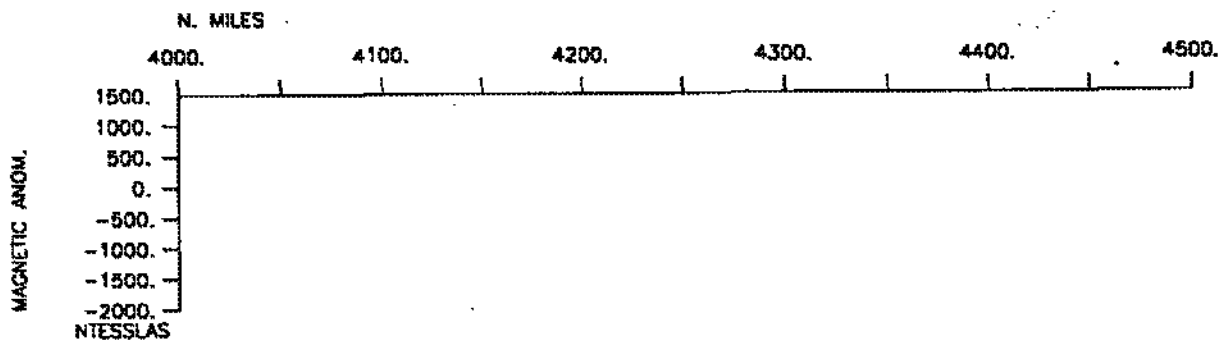


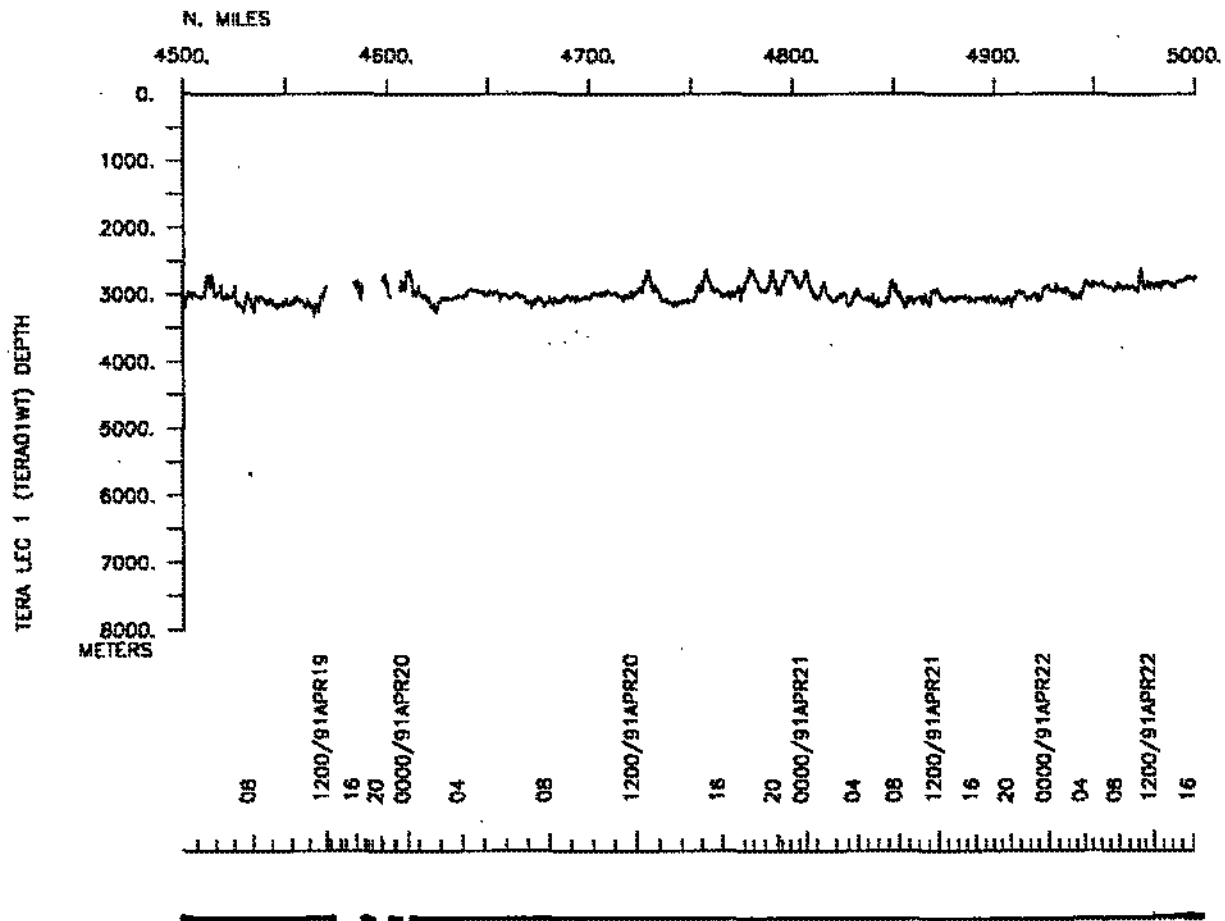
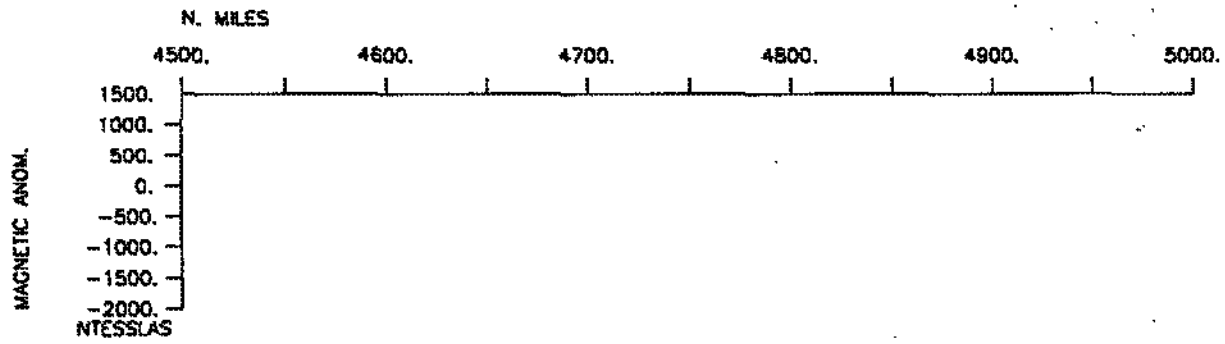
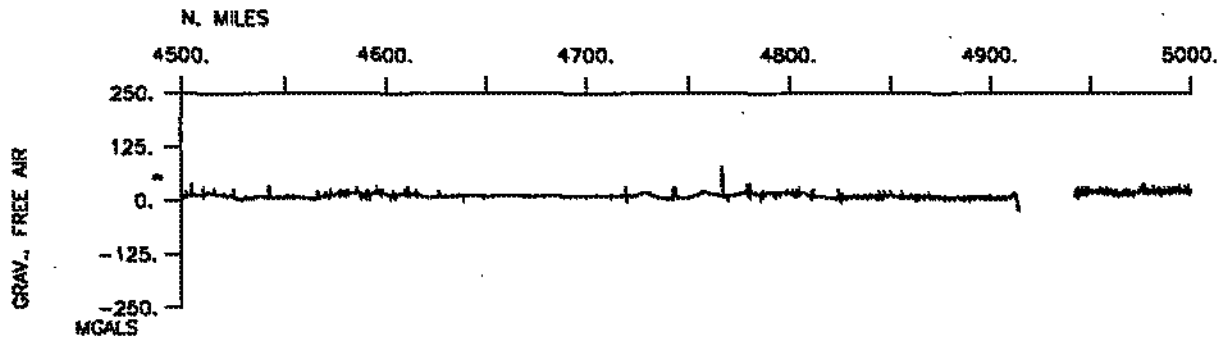


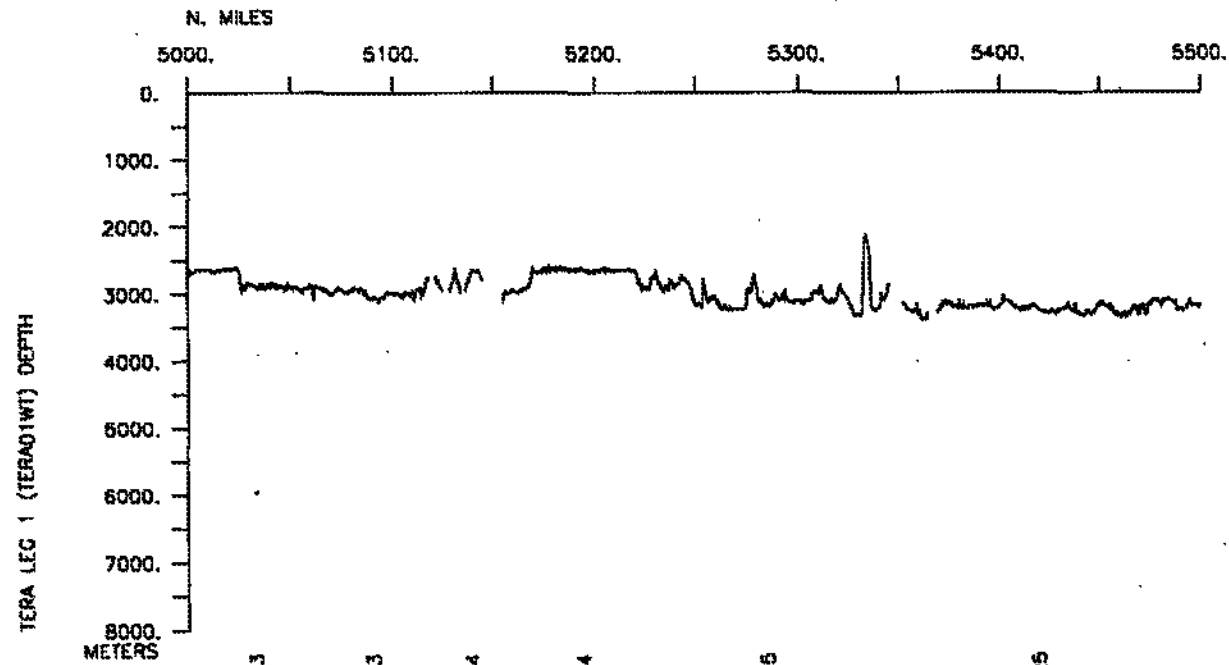
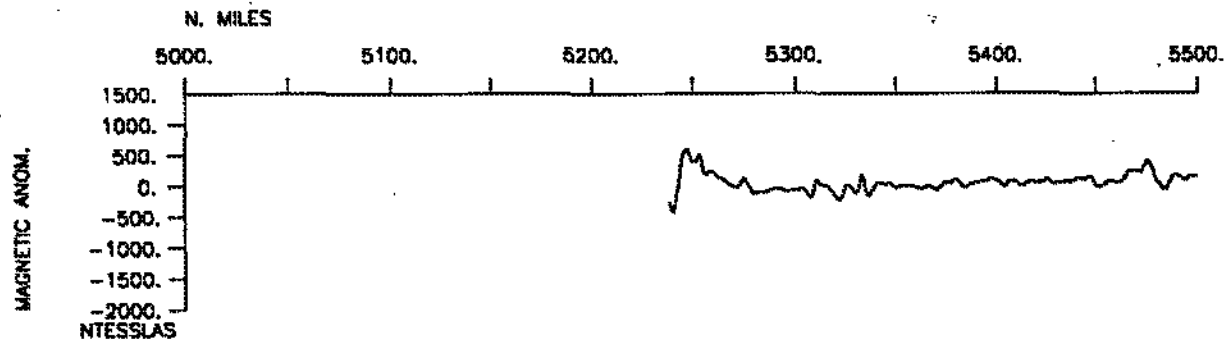




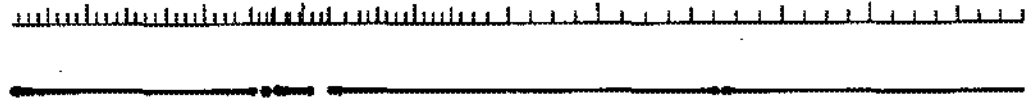


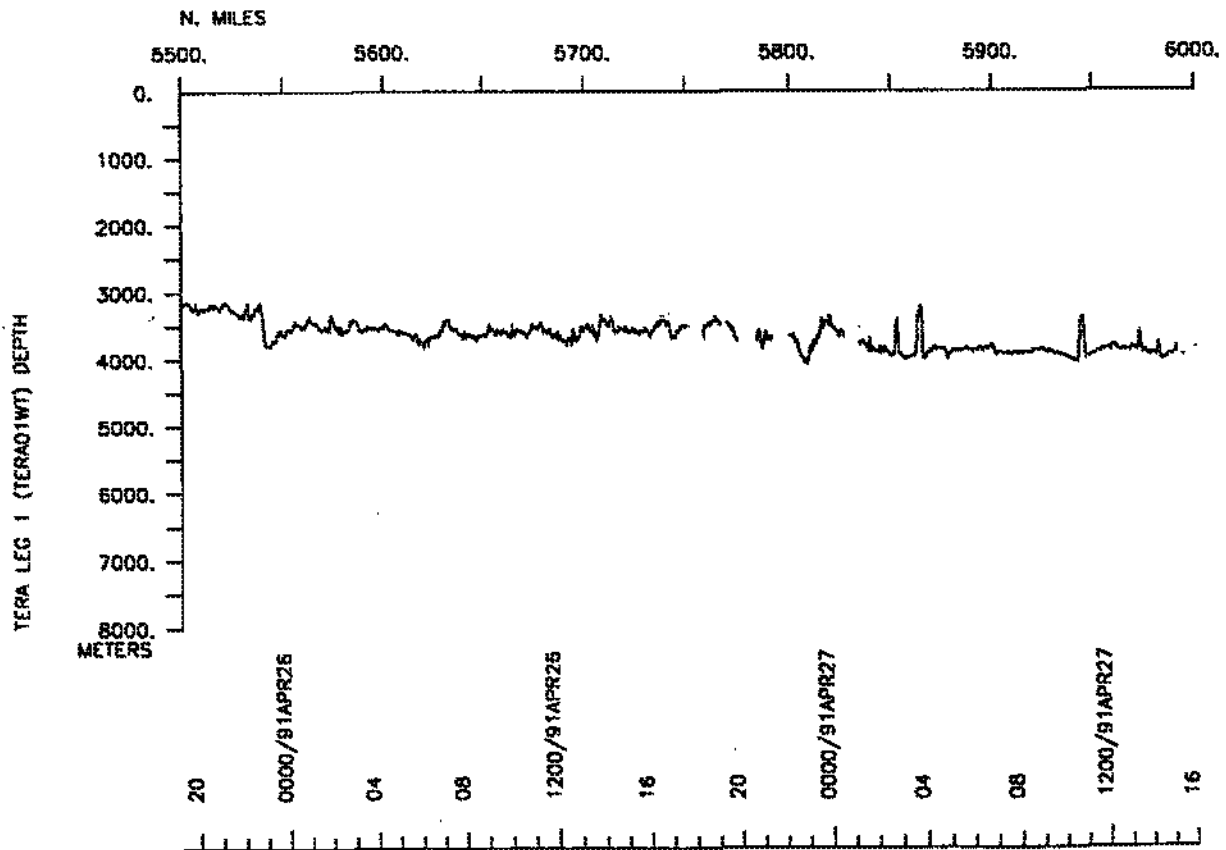
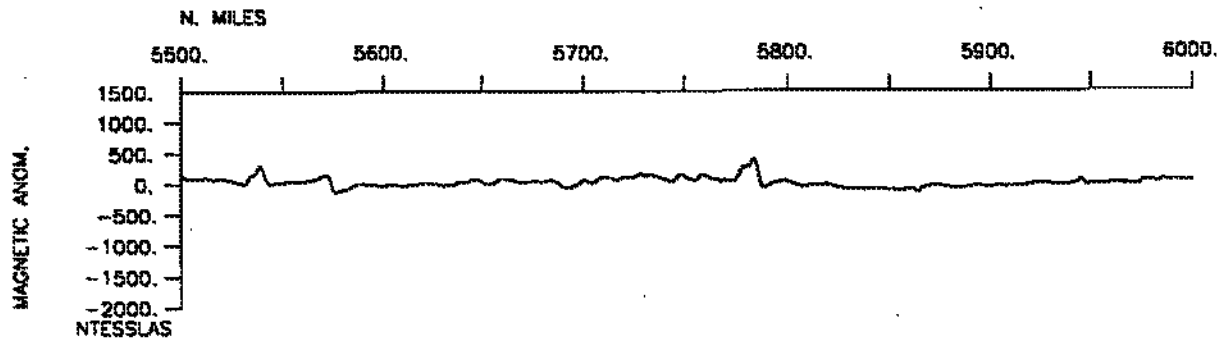
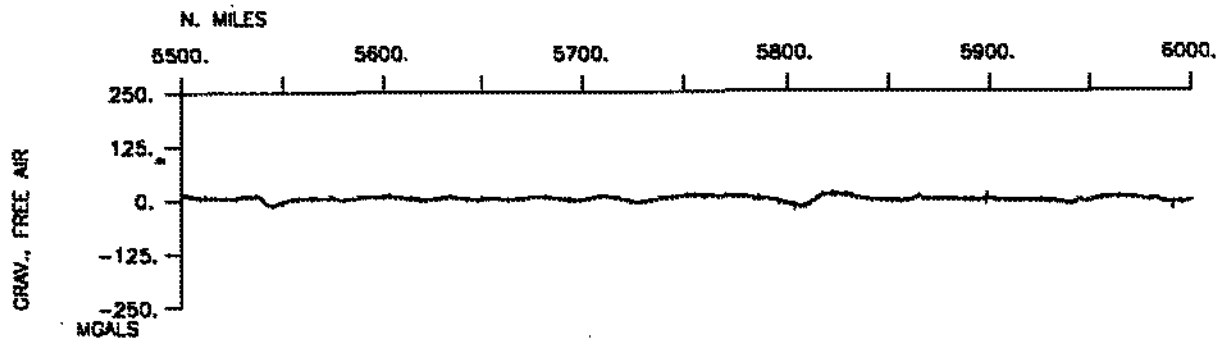


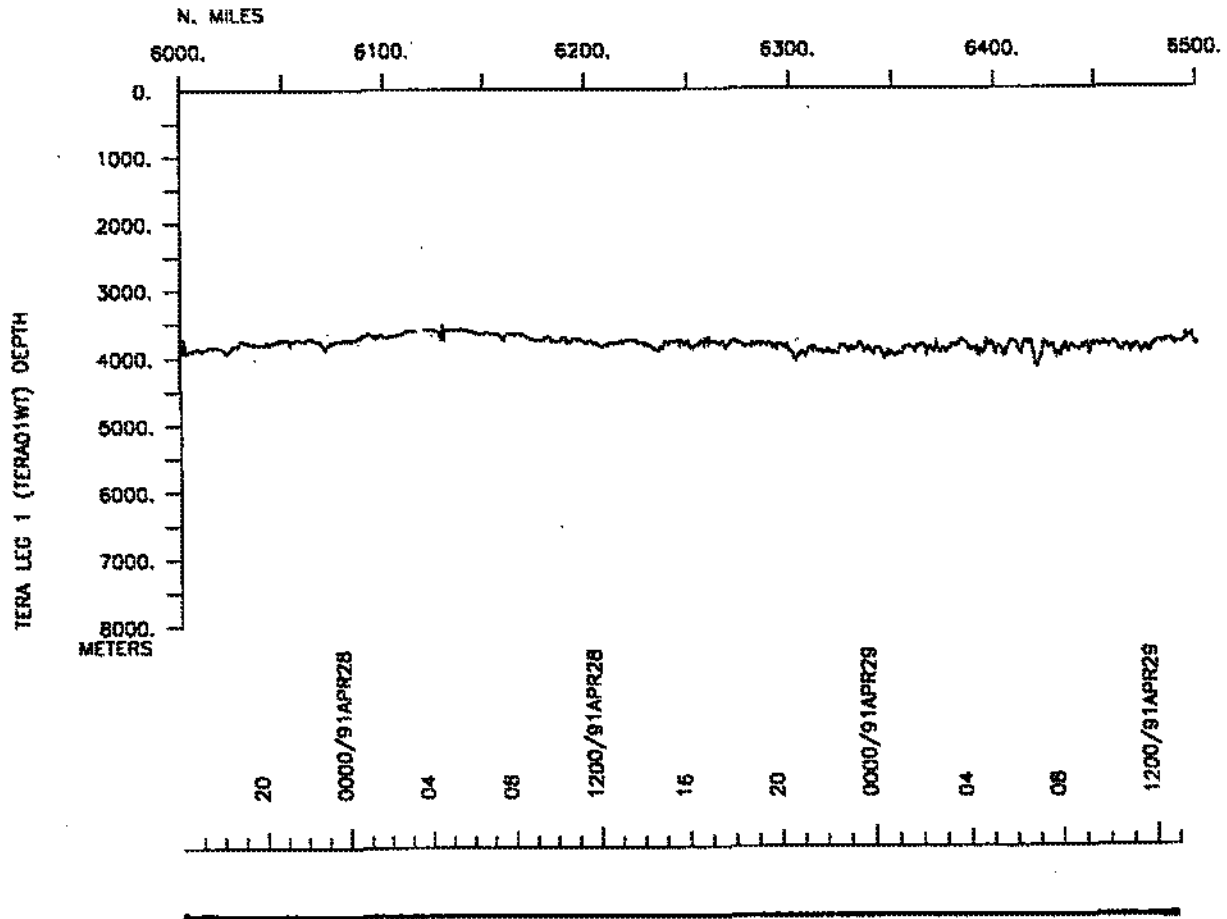
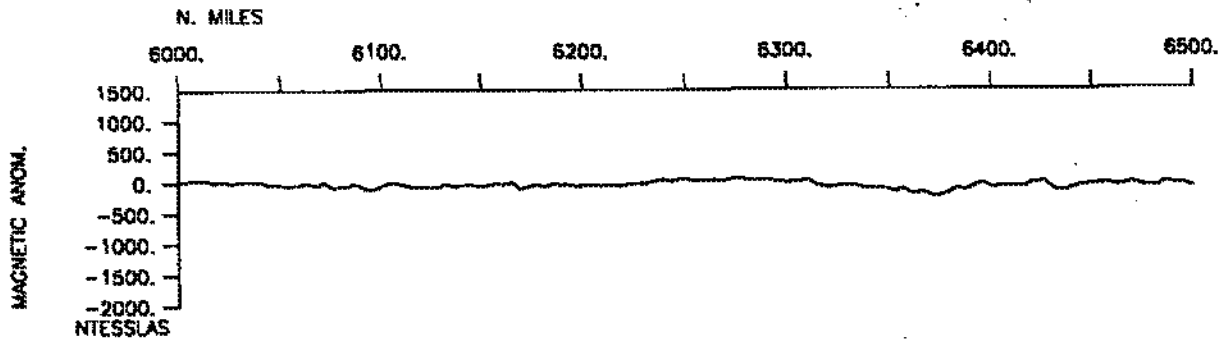
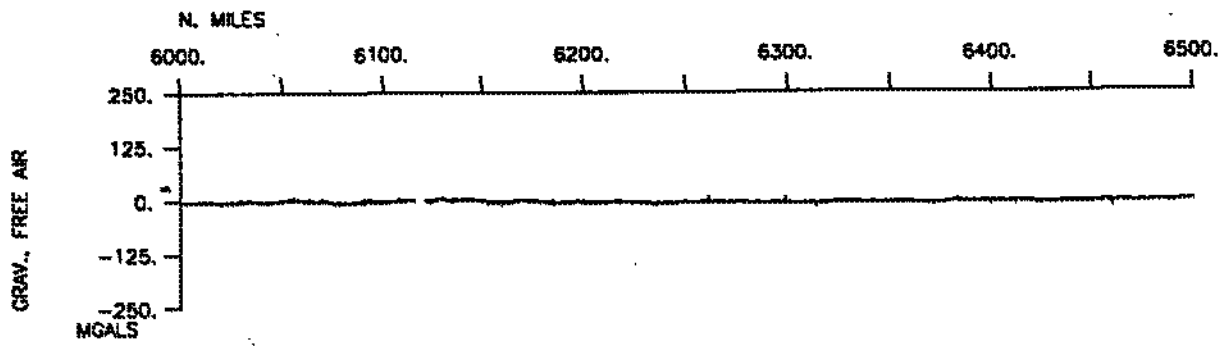


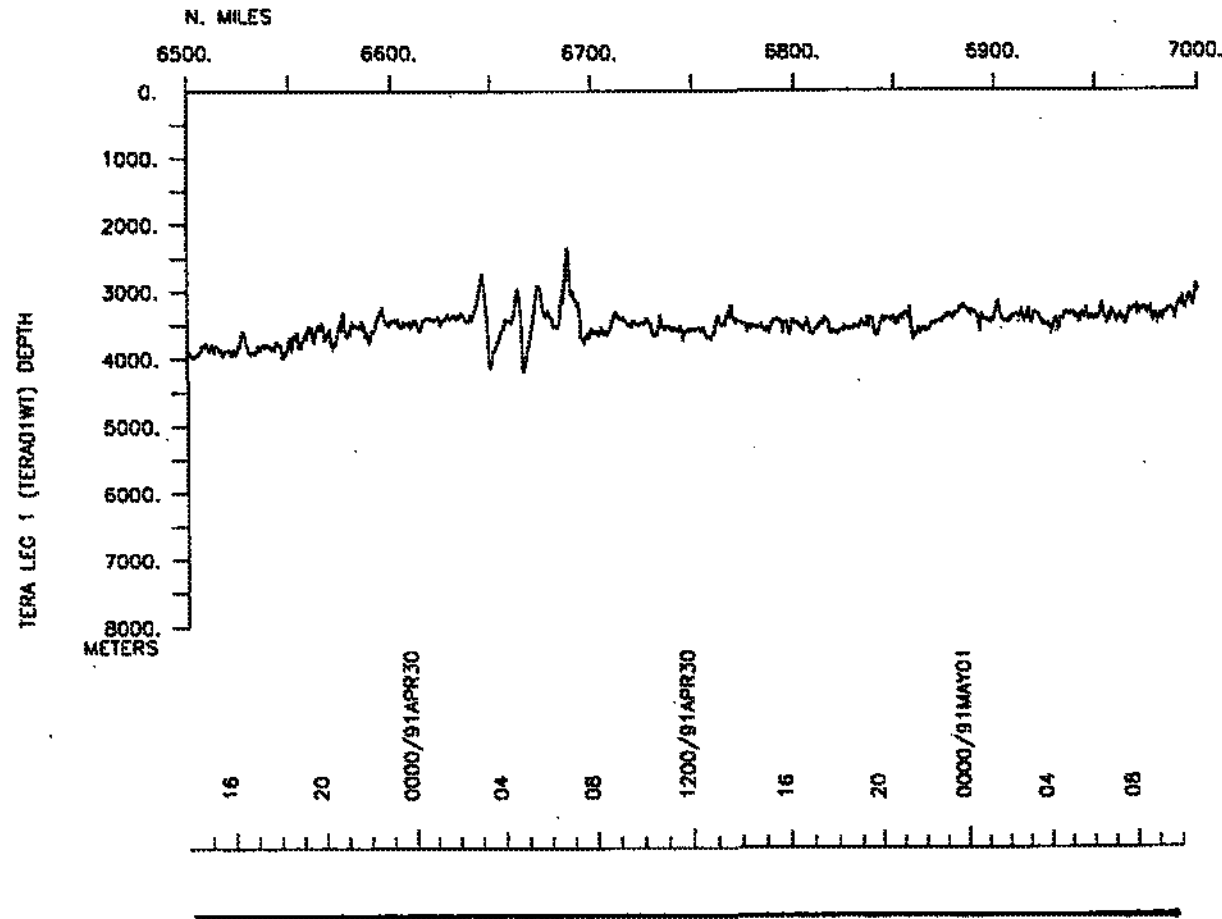
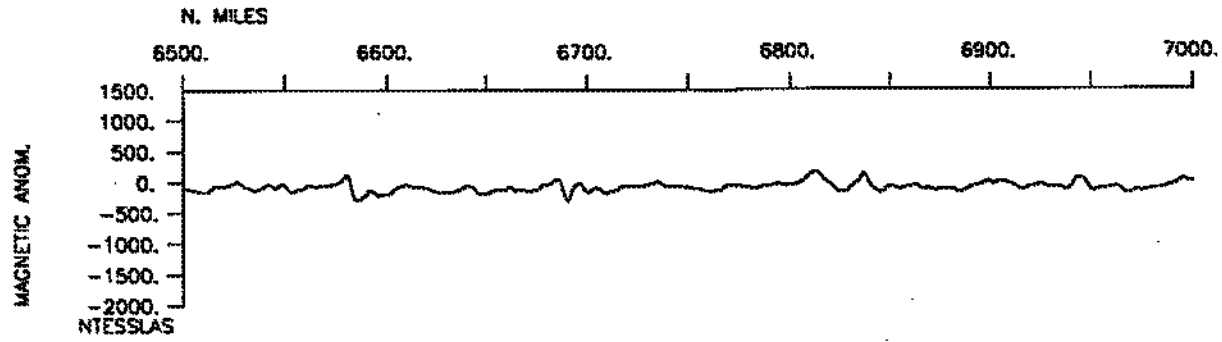
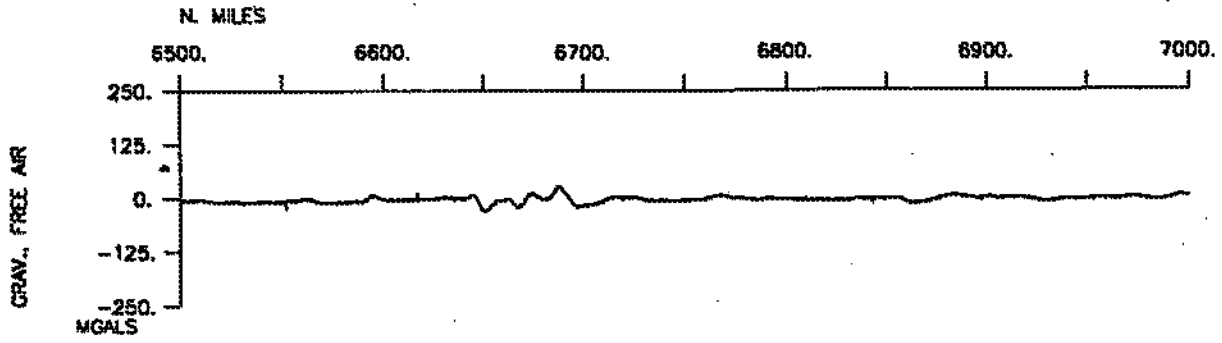


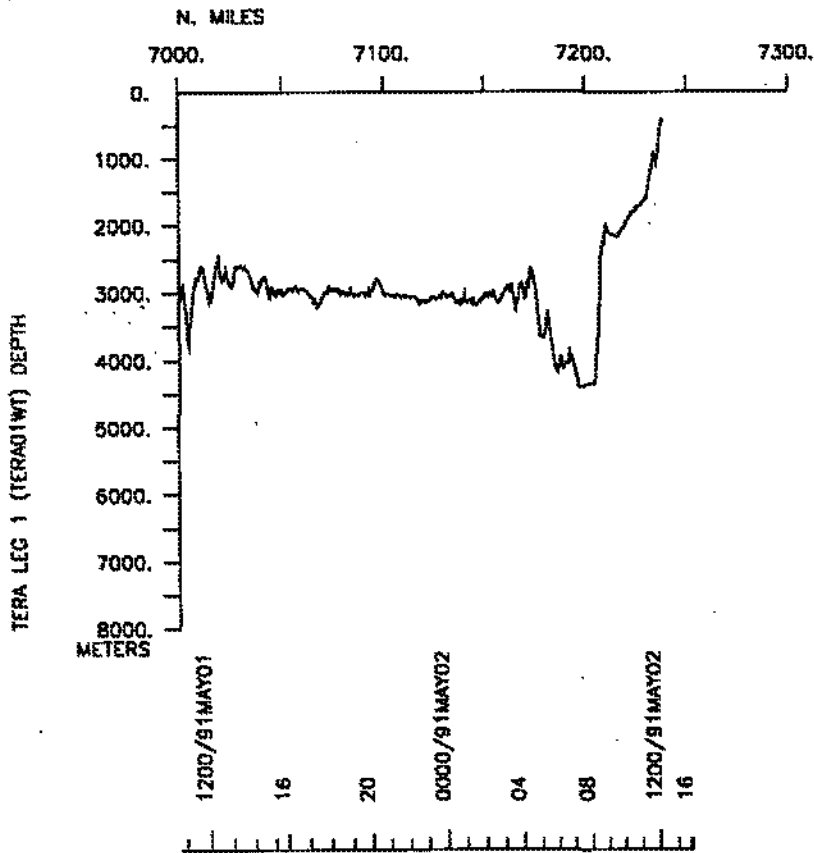
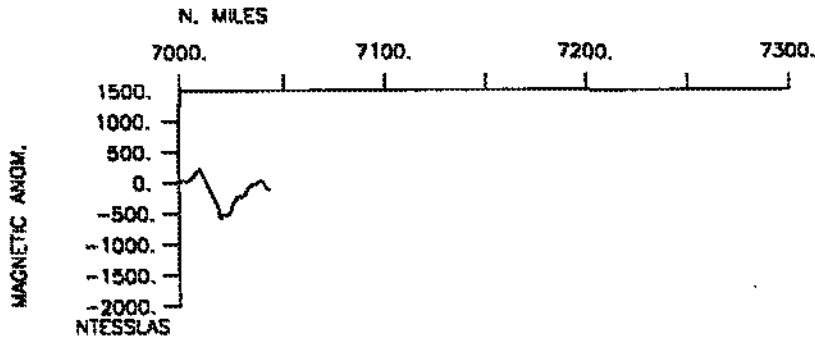
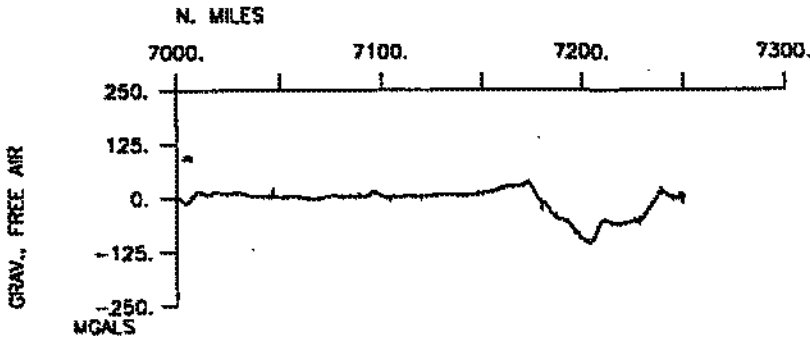
20 0000/91APR23 04 08 1200/91APR23 16 20 0000/91APR24 04 08 1200/91APR24 16 20 0000/91APR25 04 08 1200/91APR25 16











#GMT #TIME #	DDMMYY DATE ---	LOC TIME ---	T Z	SAMP CODE	SAMPLE IDENTIFIER	DISP CODE	LAT.	LONG.	CRUISE LEG-SHIP
--------------------	-----------------------	--------------------	--------	--------------	----------------------	--------------	------	-------	--------------------

**** Underway Data Curator - S. M. Smith ext. 42752 ****

**** Log Books ****

1800	290391			LBUW B	Underway Watch Log	GDC	28-024N	116-469W	sTERAO1WT
2300	010591			LBUW E	Underway Watch Log	GDC	17-022N	104-557W	sTERAO1WT
1800	280391			LBSC B	Orcutt Log	IGP	32-355N	117-133W	sTERAO1WT
2300	020591			LBSC E	Orcutt Log	IGP	19-034N	104-190W	sTERAO1WT
1800	280391			LBSC B	Harding Log	IGP	32-355N	117-133W	sTERAO1WT
2300	020591			LBSC E	Harding Log	IGP	19-034N	104-190W	sTERAO1WT

**** Echo Sounder Records - Sea Beam Monitor 12 kHz ****

1800	290391			MBRM B	SB Monitor R-01	GDC	28-024N	116-469W	sTERAO1WT
2303	010491			MBRM E	SB Monitor R-01	GDC	13-283N	115-290W	sTERAO1WT
2306	010491			MBRM B	SB Monitor R-02	GDC	13-278N	115-289W	sTERAO1WT
1935	050491			MBRM E	SB Monitor R-02	GDC	3-217S	114-193W	sTERAO1WT
1939	050491			MBRM B	SB Monitor R-03	GDC	3-224S	114-192W	sTERAO1WT
0239	100491			MBRM E	SB Monitor R-03	GDC	17-162S	112-573W	sTERAO1WT
0242	100491			MBRM B	SB Monitor R-04	GDC	17-165S	112-577W	sTERAO1WT
1454	140491			MBRM E	SB Monitor R-04	GDC	17-310S	113-137W	sTERAO1WT
1457	140491			MBRM B	SB Monitor R-05	GDC	17-307S	113-136W	sTERAO1WT
0737	200491			MBRM E	SB Monitor R-05	GDC	14-591S	112-352W	sTERAO1WT
0740	200491			MBRM B	SB Monitor R-06	GDC	14-585S	112-351W	sTERAO1WT
0730	250491			MBRM E	SB Monitor R-06	GDC	11-165S	111-483W	sTERAO1WT
0734	250491			MBRM B	SB Monitor R-07	GDC	11-157S	111-482W	sTERAO1WT
0607	300491			MBRM E	SB Monitor R-07	GDC	9-555N	106-448W	sTERAO1WT
0610	300491			MBRM B	SB Monitor R-08	GDC	9-560N	106-446W	sTERAO1WT
2300	020591			MBRM E	SB Monitor R-08	GDC	19-034N	104-190W	sTERAO1WT

#GMT #TIME #	DDMMYY DATE	LOC TIME-Z	T	SAMP CODE	SAMPLE IDENTIFIER	DISP CODE	LAT.	LONG.	CRUISE LEG-SHIP
*** Sea Beam Swath Books ***									
1800 1638	290391 010491			MBSB MBSB	B SeaBeam Swath Bk 01 E SeaBeam Swath Bk 01	GDC GDC	28-024N 14-417N	116-469W 115-347W	sTERAO1WT sTERAO1WT
1638 0230	010491 040491			MBSB MBSB	B SeaBeam Swath Bk 02 E SeaBeam Swath Bk 02	GDC GDC	14-417N 4-047N	115-347W 114-495W	sTERAO1WT sTERAO1WT
0230 2009	040491 060491			MBSB MBSB	B SeaBeam Swath Bk 03 E SeaBeam Swath Bk 03	GDC GDC	4-047N 7-523S	114-495W 113-518W	sTERAO1WT sTERAO1WT
2009 0955	060491 090491			MBSB MBSB	B SeaBeam Swath Bk 04 E SeaBeam Swath Bk 04	GDC GDC	7-523S 17-196S	113-518W 113-138W	sTERAO1WT sTERAO1WT
0955 1831	090491 120491			MBSB MBSB	B SeaBeam Swath Bk 05 E SeaBeam Swath Bk 05	GDC GDC	17-196S 17-051S	113-138W 112-584W	sTERAO1WT sTERAO1WT
1831 0505	120491 160491			MBSB MBSB	B SeaBeam Swath Bk 06 E SeaBeam Swath Bk 06	GDC GDC	17-051S 15-463S	112-584W 112-496W	sTERAO1WT sTERAO1WT
0505 1808	160491 180491			MBSB MBSB	B SeaBeam Swath Bk 07 E SeaBeam Swath Bk 07	GDC GDC	15-463S 15-514S	112-496W 112-517W	sTERAO1WT sTERAO1WT
1808 0610	180491 210491			MBSB MBSB	B SeaBeam Swath Bk 08 E SeaBeam Swath Bk 08	GDC GDC	15-514S 14-134S	112-517W 112-468W	sTERAO1WT sTERAO1WT
0610 0032	210491 250491			MBSB MBSB	B SeaBeam Swath Bk 09 E SeaBeam Swath Bk 09	GDC GDC	14-134S 12-324S	112-468W 112-082W	sTERAO1WT sTERAO1WT
0032 2050	250491 260491			MBSB MBSB	B SeaBeam Swath Bk 10 E SeaBeam Swath Bk 10	GDC GDC	12-324S 4-338S	112-082W 110-136W	sTERAO1WT sTERAO1WT
2050 1617	260491 280491			MBSB MBSB	B SeaBeam Swath Bk 11 E SeaBeam Swath Bk 11	GDC GDC	4-338S 2-585N	110-136W 108-228W	sTERAO1WT sTERAO1WT
1617 0707	280491 300491			MBSB MBSB	B SeaBeam Swath Bk 12 E SeaBeam Swath Bk 12	GDC GDC	2-585N 10-063N	108-228W 106-421W	sTERAO1WT sTERAO1WT
0709 2300	300491 020591			MBSB MBSB	B SeaBeam Swath Bk 13 E SeaBeam Swath Bk 13	GDC GDC	10-067N 19-034N	106-420W 104-190W	sTERAO1WT sTERAO1WT

#GMT	DDMMYY	LOC	T	SAMP	SAMPLE	DISP			CRUISE
#TIME	DATE	TIME	Z	CODE	IDENTIFIER	CODE	LAT.	LONG.	LEG-SHIP

**** Magnetism (Earth Total Field) Records ****

1825	290391			MGRA	B Magnetism	R-01	GDC	27-578N	116-464W	sTERAO1WT
0719	070491			MGRA	E Magnetism	R-01	GDC	9-583S	113-450W	sTERAO1WT
0725	070491			MGRA	B Magnetism	R-02	GDC	9-595S	113-449W	sTERAO1WT
2122	250491			MGRA	E Magnetism	R-02	GDC	8-480S	111-147W	sTERAO1WT
2129	250491			MGRA	B Magnetism	R-03	GDC	8-467S	111-144W	sTERAO1WT
1448	010591			MGRA	E Magnetism	R-03	GDC	15-473N	105-139W	sTERAO1WT

**** Continuous Computer Logged Gravity ****

1800	280391			GVCR	B Gravity Data		GDC	32-355N	117-133W	sTERAO1WT
2300	020591			GVCR	E Computer Logged		GDC	19-034N	104-190W	sTERAO1WT

**** Ocean Bottom Seismometers ****

0158	090491			SBOB	B Drop obs	Janice	IGP	17-213S	113-053W	fTERAO1WT
0255	090491			SBOB	E Rcvr obs	Janice	IGP	17-214S	113-056W	fTERAO1WT
0346	090491			SBOB	B Drop obs	Opus	IGP	17-209S	113-076W	fTERAO1WT
0338	150491			SBOB	E Rcvr obs	Opus	IGP	17-207S	113-082W	fTERAO1WT
0627	090491			SBOB	B Drop obs	Phred	IGP	17-173S	113-101W	fTERAO1WT
1858	140491			SBOB	E Rcvr obs	Phred	IGP	17-172S	113-102W	fTERAO1WT
0819	090491			SBOB	B Drop obs	Judy	IGP	17-227S	113-115W	fTERAO1WT
2235	140491			SBOB	E Rcvr obs	Judy	IGP	17-224S	113-119W	fTERAO1WT
1007	090491			SBOB	B Drop obs	Sharyn	IGP	17-193S	113-142W	fTERAO1WT
0606	150491			SBOB	E Rcvr obs	Sharyn	IGP	17-192S	113-142W	fTERAO1WT
1119	090491			SBOB	B Drop obs	Karen	IGP	17-187S	113-164W	fTERAO1WT
0812	150491			SBOB	E Rcvr obs	Karen	IGP	17-188S	113-163W	fTERAO1WT

#GMT #TIME #	DDMMYY DATE	LOC T TIME Z	SAMP CODE	SAMPLE IDENTIFIER	DISP CODE	LAT.	LONG.	CRUISE LEG-SHIP
1414 0105	090491 150491		SBOB B SBOB E	Drop obs Rcvr obs	IGP	17-213S 17-212S	113-053W 113-054W	fTERAO1WT fTERAO1WT
1825 0120	160491 200491		SBOB B SBOB E	Drop obs Rcvr obs	IGP	15-592S 15-591S	112-568W 112-568W	fTERAO1WT fTERAO1WT
2039 1853	160491 190491		SBOB B SBOB E	Drop obs Rcvr obs	IGP	15-554S 15-554S	112-529W 112-530W	fTERAO1WT fTERAO1WT
2216 2055	160491 190491		SBOB B SBOB E	Drop obs Rcvr obs	IGP	15-546S 15-546S	112-574W 112-574W	fTERAO1WT fTERAO1WT
0003 1323	170491 190491		SBOB B SBOB E	Drop obs Rcvr obs	IGP	15-544S 15-544S	113-017W 113-017W	fTERAO1WT fTERAO1WT
0203 2307	170491 190491		SBOB B SBOB E	Drop obs Rcvr obs	IGP	15-576S 15-574S	113-020W 113-020W	fTERAO1WT fTERAO1WT
0411 1515	170491 190491		SBOB B SBOB E	Drop obs Rcvr obs	IGP	15-504S 15-504S	112-577W 112-578W	fTERAO1WT fTERAO1WT
1742 1735	200491 230491		SBOB B SBOB E	Drop obs Rcvr obs	IGP	14-077S 14-078S	112-311W 112-312W	fTERAO1WT fTERAO1WT
1855 1943	200491 230491		SBOB B SBOB E	Drop obs Rcvr obs	IGP	14-108S 14-108S	112-353W 112-354W	fTERAO1WT fTERAO1WT
2029 2156	200491 230491		SBOB B SBOB E	Drop obs Rcvr obs	IGP	14-121S 14-123S	112-287W 112-288W	fTERAO1WT fTERAO1WT
2152 2349	200491 230491		SBOB B SBOB E	Drop obs Rcvr obs	IGP	14-150S 14-150S	112-331W 112-331W	fTERAO1WT fTERAO1WT
2314 0127	200491 240491		SBOB B SBOB E	Drop obs Rcvr obs	IGP	14-189S 14-190S	112-305W 112-306W	fTERAO1WT fTERAO1WT
0040 0401	210491 240491		SBOB B SBOB E	Drop obs Rcvr obs	IGP	14-193S 14-195S	112-374W 112-376W	fTERAO1WT fTERAO1WT

#GMT	DDMMYY	LOC	T	SAMP	SAMPLE	DISP			CRUISE
#TIME	DATE	TIME	Z	CODE	IDENTIFIER	CODE	LAT.	LONG.	LEG-SHIP

#*** Expanding Spread Seismic Profile Lines ***									
1322	100491			SPES	B Begin esp line 1	IGP	17-342S	113-202W	sTERAO1WT
2010	100491			SPES	E End esp line 1	IGP	17-032S	113-125W	sTERAO1WT
2149	100491			SPES	B Begin esp line 2	IGP	17-061S	113-108W	sTERAO1WT
0320	110491			SPES	E End esp line 2	IGP	17-324S	113-174W	sTERAO1WT
0455	110491			SPES	B Begin esp line 3	IGP	17-302S	113-151W	sTERAO1WT
0925	110491			SPES	E End esp line 3	IGP	17-092S	113-097W	sTERAO1WT
1311	110491			SPES	B Begin esp line 5	IGP	17-098S	113-066W	sTERAO1WT
1737	110491			SPES	E End esp line 5	IGP	17-311S	113-118W	sTERAO1WT
1910	110491			SPES	B Begin esp line 6	IGP	17-339S	113-108W	sTERAO1WT
0032	120491			SPES	E End esp line 6	IGP	17-076S	113-042W	sTERAO1WT
0149	120491			SPES	B Begin esp line 4	IGP	17-068S	113-075W	sTERAO1WT
0715	120491			SPES	E End esp line 4	IGP	17-331S	113-142W	sTERAO1WT
0935	120491			SPES	B Begin esp line 7	IGP	17-369S	113-093W	sTERAO1WT
1623	120491			SPES	E End esp line 7	IGP	17-055S	113-013W	sTERAO1WT
1845	120491			SPES	B Begin esp line 8	IGP	17-062S	112-589W	sTERAO1WT
0105	130491			SPES	E End esp line 8	IGP	17-373S	113-070W	sTERAO1WT
0204	130491			SPES	B Begin esp line 9	IGP	17-378S	113-050W	sTERAO1WT
0843	130491			SPES	E End esp line 9	IGP	17-066S	112-569W	sTERAO1WT
1022	130491			SPES	B Begin esp line 10	IGP	17-078S	112-519W	sTERAO1WT
1647	130491			SPES	E End esp line 10	IGP	17-389S	113-001W	sTERAO1WT
2127	130491			SPES	B Begin esp line 11	IGP	17-146S	113-094W	sTERAO1WT
2336	130491			SPES	E End esp line 11	IGP	17-044S	113-068W	sTERAO1WT
0150	140491			SPES	B Begin esp line 12	IGP	17-096S	113-082W	sTERAO1WT
0358	140491			SPES	E End esp line 12	IGP	17-199S	113-107W	sTERAO1WT
0754	140491			SPES	B Begin esp line 13	IGP	17-212S	113-052W	sTERAO1WT
1114	140491			SPES	E End esp line 13	IGP	17-175S	113-218W	sTERAO1WT
1449	140491			SPES	B Begin esp line 14	IGP	17-314S	113-138W	sTERAO1WT
1706	140491			SPES	E End esp line 14	IGP	17-211S	113-111W	sTERAO1WT

#GMT #TIME #	DDMMYY DATE	LOC T TIME Z	SAMP CODE	SAMPLE IDENTIFIER	DISP CODE	LAT.	LONG.	CRUISE LEG-SHIP
0313 0947	210491 210491		SPES B SPES E	Begin esp line 15 End esp line 15	IGP IGP	14-273S 13-557S	112-505W 112-422W	sTERAO1WT sTERAO1WT
1202 1915	210491 210491		SPES B SPES E	Begin esp line 16 End esp line 16	IGP IGP	13-573S 14-285S	112-363W 112-444W	sTERAO1WT sTERAO1WT
2123 0324	210491 220491		SPES B SPES E	Begin esp line 17 End esp line 17	IGP IGP	14-281S 14-009S	112-396W 112-326W	sTERAO1WT sTERAO1WT
0505 0953	220491 220491		SPES B SPES E	Begin esp line 18 End esp line 18	IGP IGP	14-041S 14-252S	112-318W 112-373W	sTERAO1WT sTERAO1WT
1108 1245	220491 220491		SPES B SPES E	Begin esp line 20 End esp line 20	IGP IGP	14-257S 14-187S	112-342W 112-322W	sTERAO1WT sTERAO1WT
1733 2037	220491 220491		SPES B SPES E	Begin esp line 19 End esp line 19	IGP IGP	14-081S 14-222S	112-308W 112-346W	sTERAO1WT sTERAO1WT
2258 0443	220491 230491		SPES B SPES E	Begin esp line 21 End esp line 21	IGP IGP	14-290S 14-026S	112-333W 112-261W	sTERAO1WT sTERAO1WT
0605 0847	230491 230491		SPES B SPES E	Begin esp line 22 End esp line 22	IGP IGP	14-029S 14-159S	112-239W 112-279W	sTERAO1WT sTERAO1WT
1046 1441	230491 230491		SPES B SPES E	Begin esp line 23 End esp line 23	IGP IGP	14-219S 14-043S	112-247W 112-196W	sTERAO1WT sTERAO1WT

*** Seismic Run - Refraction and/or Wide Angle Reflection ***

0614 1700	240491 240491		SRCS B SRCS E	Begin wap line 1 End wap line 1	IGP IGP	14-316S 13-447S	112-374W 112-252W	sTERAO1WT sTERAO1WT
0723 1315	170491 170491		SRCS B SRCS E	Begin obs line 2 End obs line 2	IGP IGP	15-376S 16-060S	112-520W 112-543W	sTERAO1WT sTERAO1WT
1315 1406	170491 170491		SRCS B SRCS E	Begin obs line 3 End obs line 3	IGP IGP	16-060S 16-050S	112-543W 112-585W	sTERAO1WT sTERAO1WT
1406 1755	170491 170491		SRCS B SRCS E	Begin obs line 4 End obs line 4	IGP IGP	16-050S 15-467S	112-585W 112-557W	sTERAO1WT sTERAO1WT