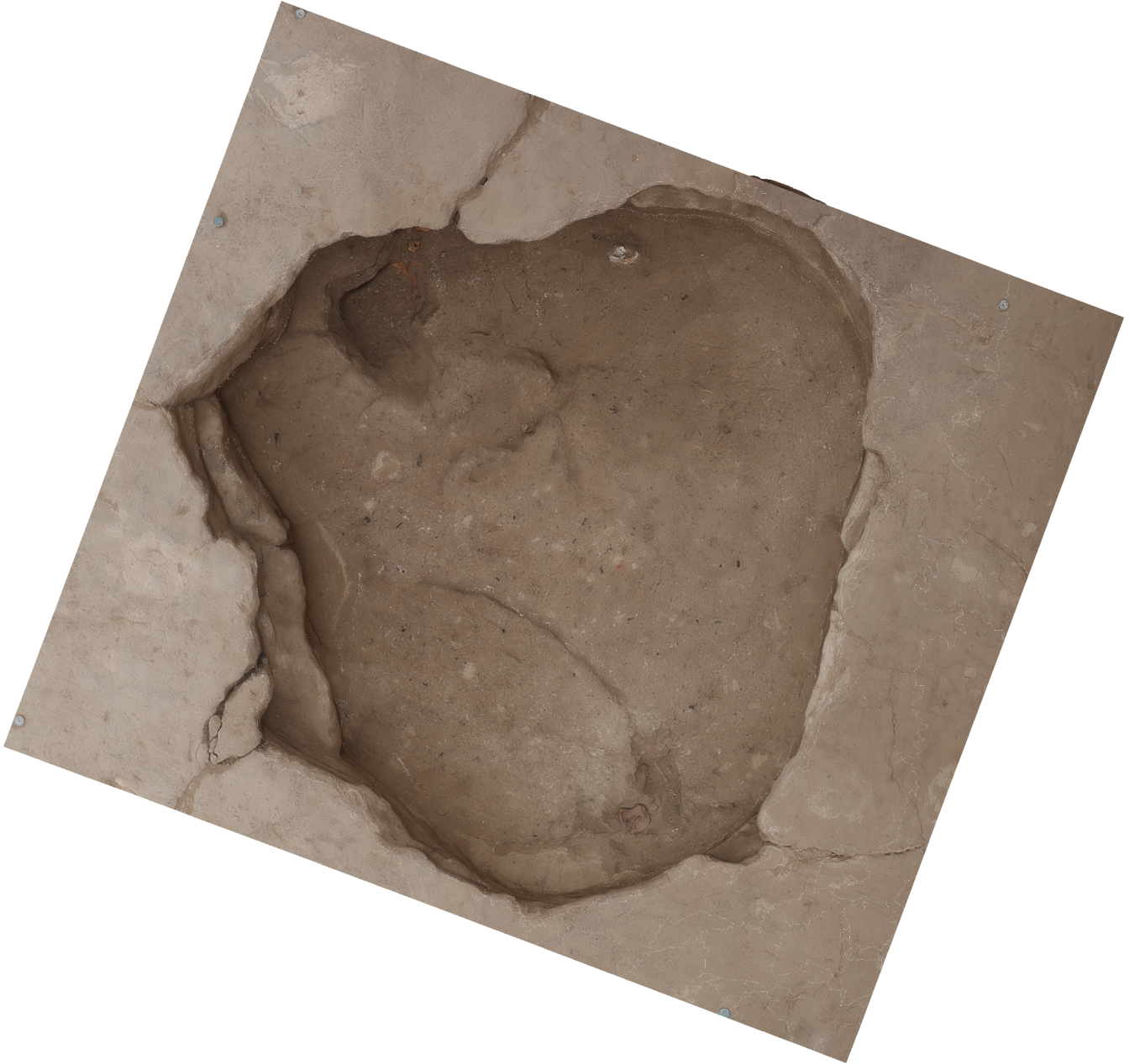


Agisoft PhotoScan

Processing Report
01 November 2014



Survey Data

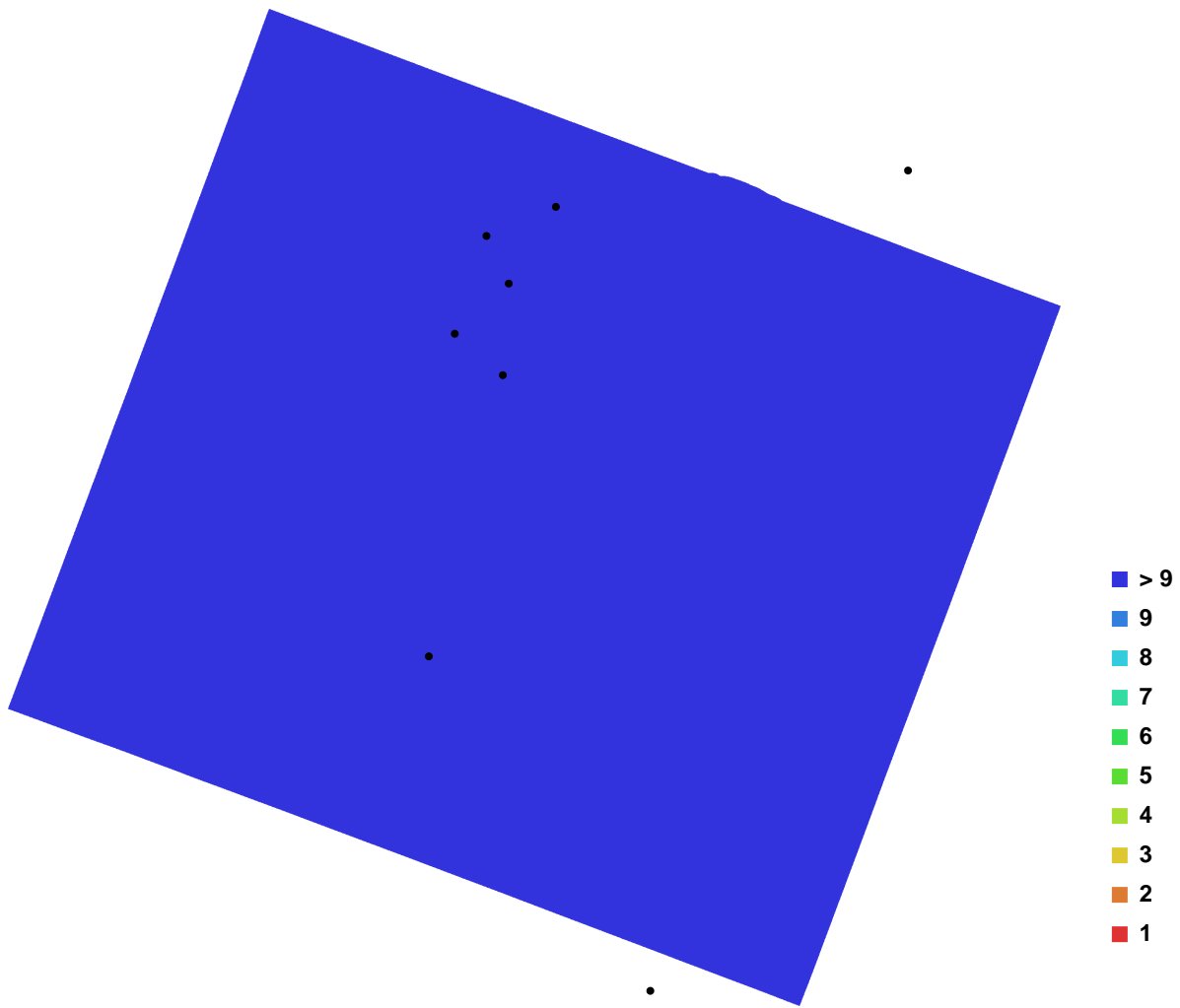


Fig. 1. Camera locations and image overlap.

Number of images:	27	Camera stations:	27
Flying altitude:	2.15706 m	Tie-points:	136490
Ground resolution:	0.000458875 m/pix	Projections:	384969
Coverage area:	1.23367e-006 sq km	Error:	0.782889 pix

Camera Model	Resolution	Focal Length	Pixel Size	Precalibrated
Canon EOS M (18 mm)	5184 x 3456	18 mm	4.384 x 4.384 um	No

Table. 1. Cameras.

Digital Elevation Model

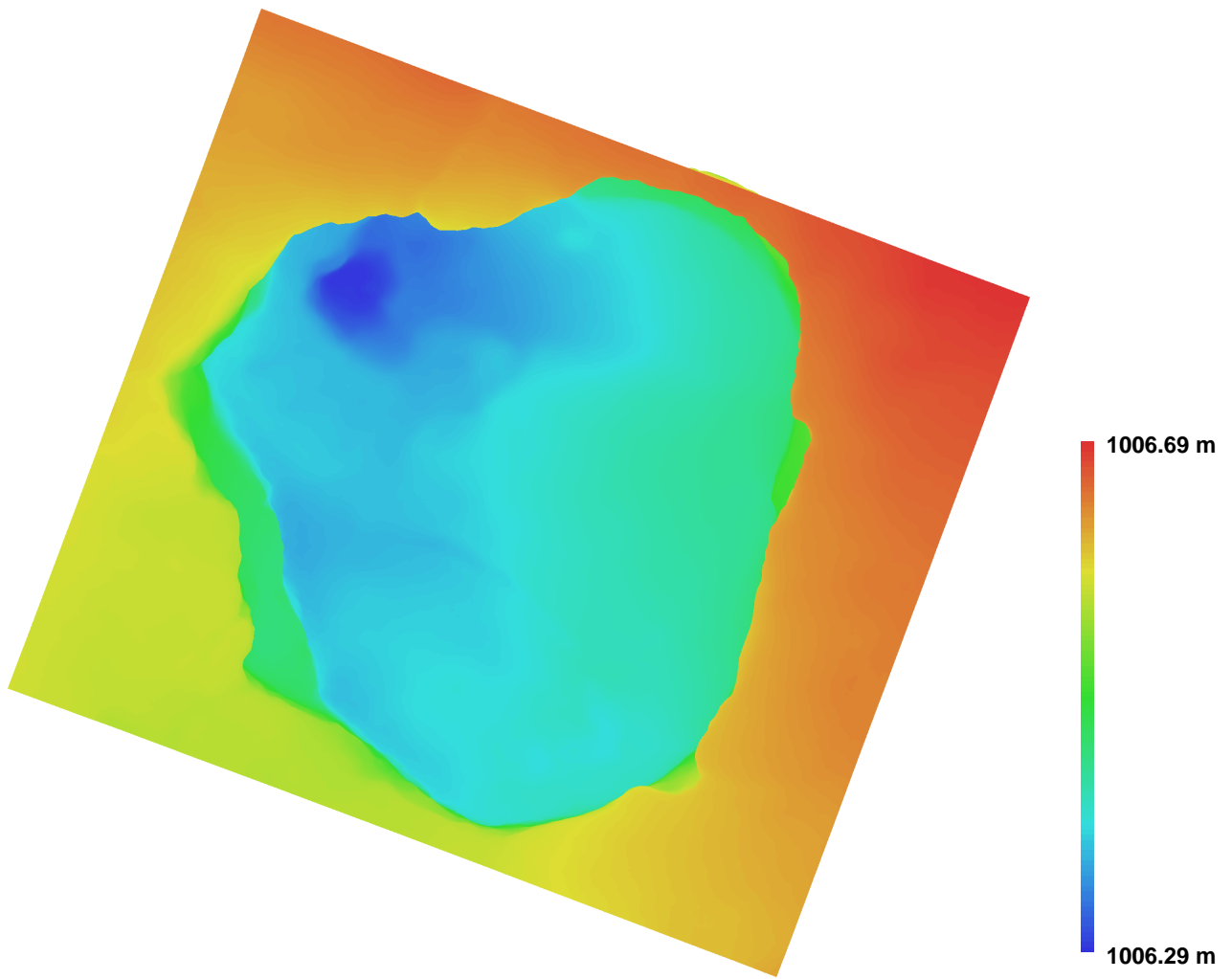


Fig. 2. Reconstructed digital elevation model.

Resolution: 0.0018355 m/pix
Point density: 296818 points per sq m