

Cell Centered Database

University of California, San Diego

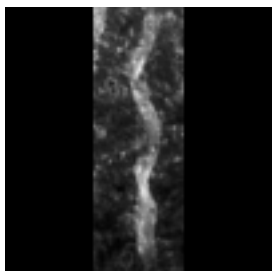
Maryann Martone

Microscopy Product #:13 pccor10

For the most updated information, please visit

<http://ccdb.ucsd.edu/CCDBWebSite/main?event=displaySum&mpid=13>

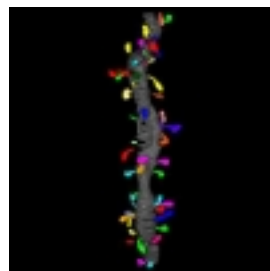
Image2D



Reconstruction



Segmentation



Project Information:

PROJECT_ID	P1119
PROJECT_NAME	Correlated Microscopy of Dendritic Spines
PROJECT_DESCRIPTION	Measurements of spine parameters using light microscopy and electron tomography
LEADER	Maryann Martone
FUNDING_AGENCY	NIH
PROJECT_START_DATE	1992-01-01 00:00:00.0
PROJECT_END_DATE	
COLLABORATORS	Naoko Yamada; Gordun Arbuthnott; Cali Ingham; Stephen Young
PUBLICATION1	
PUBLICATION2	
PUBLICATION3	

Experiment Information -

PURPOSE	how well dendritic spines can be detected and measured using LM
TITLE	spiny dendrite
EXPERIMENTER	Naoko Yamada
EXPERIMENT_NAME	
EXPERIMENT_DATE	

Subject Information -	
GROUP_BY	
SUBJECT_NAME	
FIXATION_METHOD_ID	
SCIENTIFIC_NAME	rattus norvegicus
SPECIES	rat
STRAIN	Sprague Dawley
AGE	
AGECLASS	adult
ANIMAL_NAME	
LITTER_ID	
SEX	unspecified
VENDOR	
WEIGHT	

Tissue -	
ANATOMIC_LOCATION	cerebellum
MICROTOME	ultramicrotome
ORIENTATION	sagittal
THICKNESS	2 um
TISSUE_PROD_STORAGE	
EXTERNAL_FILE_NAME	
TISSUE_GROUP_TYPE	

Microscopy Product Information -	
MICROSCOPY_PRODUCT_ID	13
IMAGE_BASENAME	pccor10
CREATE_DATE	2000-06-13 00:00:00.0
INSTRUMENT	JEOL4000 IVEM
MICROSCOPE_TYPE	IVEM
PLANE_COUNT	
PRODUCT_TYPE	single tilt
PURL	NA
SESSION_NAME	pccor10/pccor10.jpg
TELESCIENCE_SRB	P1119/Experiment_10/Subject_10/Tissue_12/Microscopy_13
X_RESOLUTION	
Y_RESOLUTION	
XSIZE	1024
YSIZE	1024

Protocol:

N/A

Image Type -

SINGLE_TILT_IMAGE_SEQ_ID	2
TILT_INCREMENT	2 degrees
SINGLE_TILT_IMAGE_SEQ_ID	2
TILT_INCREMENT	2 degrees
RANGE_MAX	60 degrees
RANGE_MIN	-60 degrees

Specimen Description -

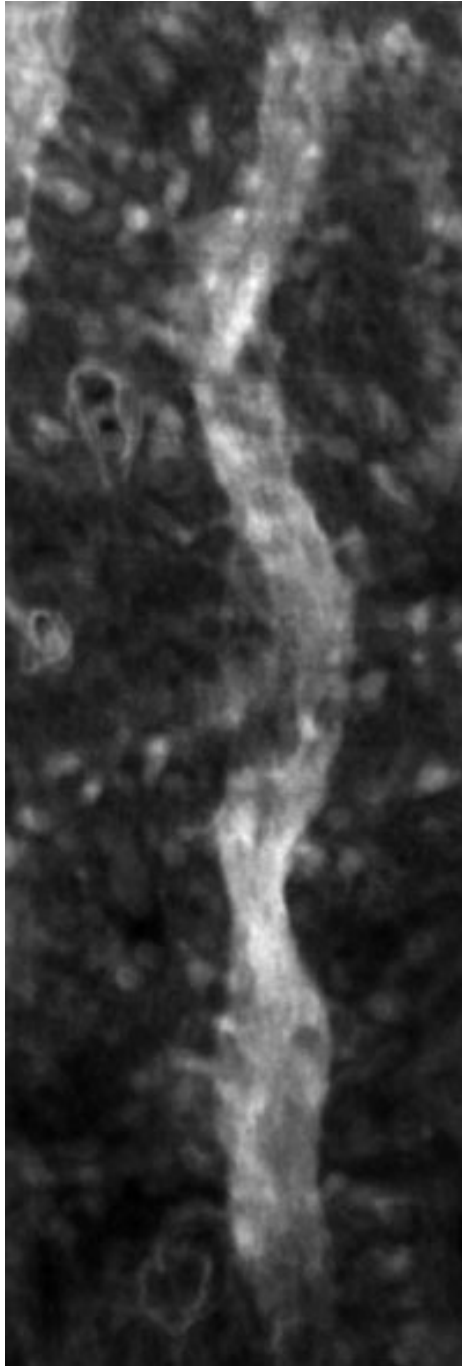
ANATOMICAL_DETAIL	13
ATLAS_COORD	, ,
CELL_TYPE	Purkinje neuron
ORGAN	brain
REGION	cerebellum
STRUCTURE	spiny dendrite
SYSTEM	central nervous system

Electron Microscopy Product -

EM_PRODUCT_ID	2
ACCELERATING_VOLTAGE	400 KeV
MAGNIFICATION	3000
RECORDING_MEDIUM	film

Raw 2D Image

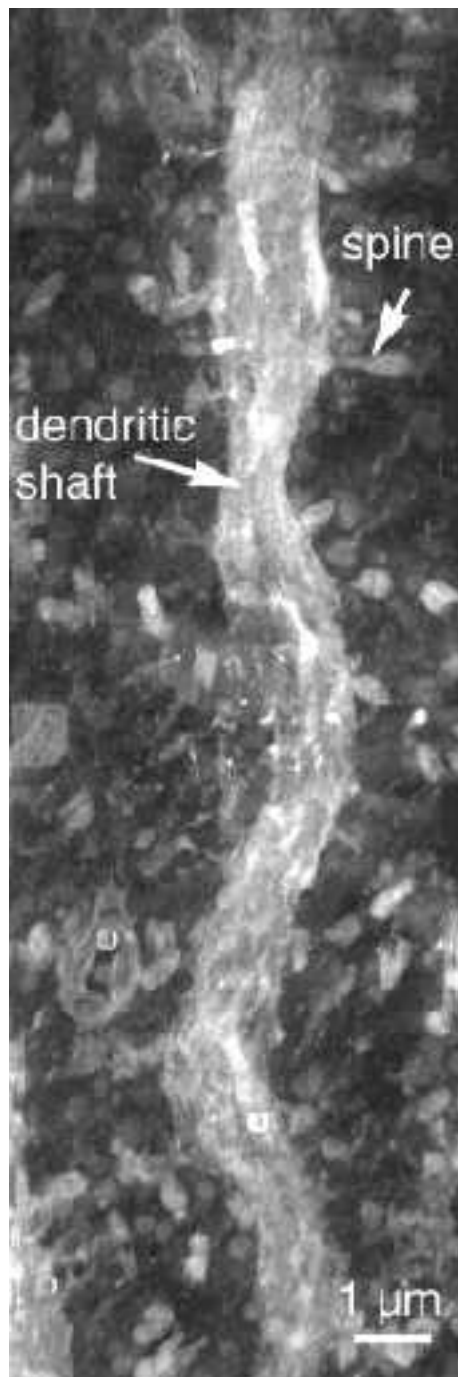
Raw Low Resolution 2D Image -



Raw 2D Image -	
IMAGE2D_ID	13
IMAGE_DESC	This file contains the original tilt images; pccor10.????f.Z; compressed.To uncompress use the uncompress command in Unix; Also contains the aligned and cropped tilt images; pccor10.????crop.The file containing the fiducial marks for the alignment
IMAGE_FILE_FORMAT	tar
IMAGE_FILE_NAME	pccor10/pccor10_img.jpg
MAGNIFICATION	3000
RAW_ANIMATION_DESC	Animation through the aligned tilt series
RAW_ANIMATION_FILE	pccor10/pccor10_img.qt
RAW_DATA_FILE	pccor10/pccor10_img.tar
THUMBNAIL_DESC	Zero tilt image from a single tilt series through a 2 um thick section of a Purkinje cell dendrite that has been intracellularly injected and photooxidized
THUMBNAIL_FILE	P1119/pccor10_rt.jpg

Reconstruction

Reconstruction Image -

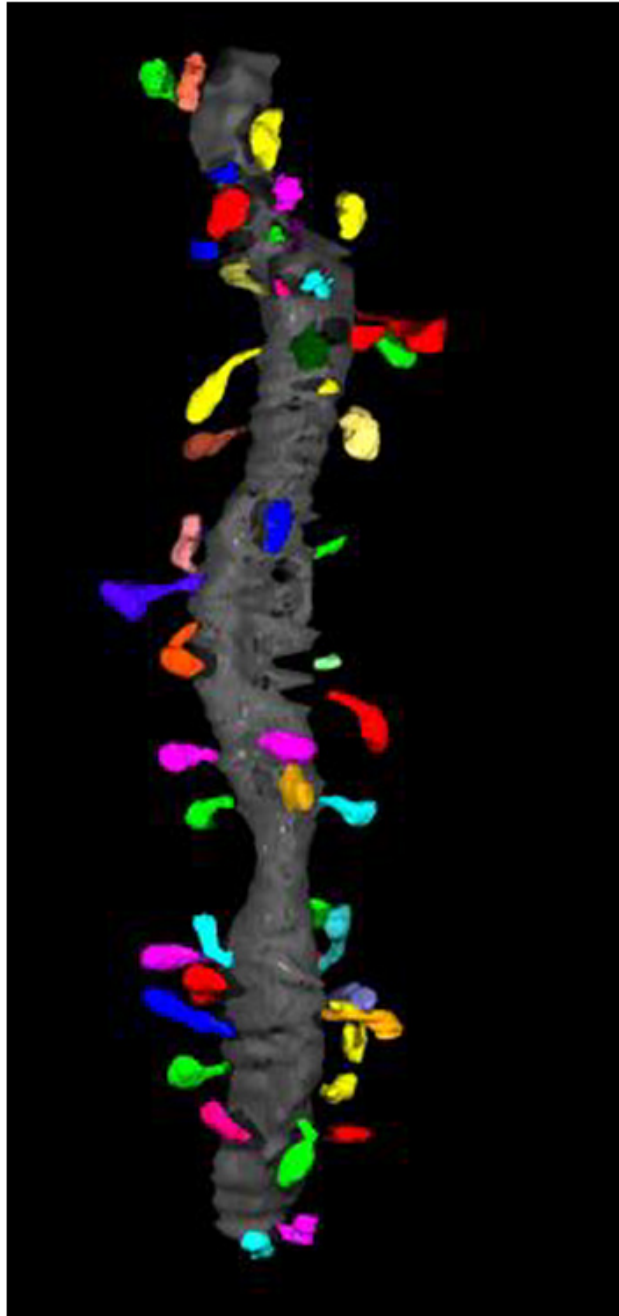


Tomographic reconstruction of stained Purkinje cell dendrite from rat cerebellum. Maximum intensity projection through the volume, with contrast reversed so that dendrite appears bright against background.

Reconstruction -	
RECONSTRUCTION3D_ID	13
CORRELATED_VOLUME_NAME	pccor10_dc/pccor10_dc_vol.tar
CROPPING_COORDINATE1	,
CROPPING_COORDINATE2	,
RECON_ALGORITHM	R-weighted back projection
RECON_DESC	Pccor10_inv is an unprocessed volume with the contrast reversed (spiny dendrite appears bright)
RECON_PROGRAM	Suprim
RECON_TYPE	single tilt electron tomography
THUMBNAIL	P1119/pccor10_vt.jpg
VOLUME_DIMENSION	200, 590, 80
VOLUME_NAME	pccor10/pccor10_vol.tar
VOXEL_SCALE	.026, .026, .026
RECONSTRUCTION_IMAGES_ID	13
RECON_IMAGE_DESC	Tomographic reconstruction of stained Purkinje cell dendrite from rat cerebellum. Maximum intensity projection through the volume, with constrast reversed so that dendrite appears bright against background
RECON_RAW_FILENAME	pccor10/pccor10_img.jpg
RECON_FILE_NAME	pccor10/pccor10.max.jpg
VOLUME_THUMBNAIL	P1119/pccor10_vt.jpg

Segmentation

Segmentation Image -



Segmented reconstruction of a Purkinje cell dendrite. The dendritic shaft is in gray. The spines (various colors) were segmented individually

Segmentation -	
SEGMENTED_OBJECT_ID	14
ANALYZE_DESC	SA and Vol measurements from Analyze
ANALYZE_DESC	SA and Vol measurements from Analyze
DOWNLOADABLE_FILE_DESC	Tar file containing original trace file (MM.trace) with manual contours produced with Xvoxtrace and the surface renderings of the dendritic shaft (shaft.synu) and the individual dendritic spines (sp*.synu) in Synu format, along with the Viewdata file required for viewing with Synuview.
IS_MANUAL	Y
NUMBER_OF_OBJECT	1
OBJECT_DESC	dendritic spine
OBJECT_NAME	sp1.synu
OBJECT_TYPE	surface
SEGMENTED_OBJ_2D_IMAGE	pccor10/pccor10.jpg
SEGMENTED_OBJECT_ID	14
SEGMENT_PERSON_NAME	Maryann Martone
SEG_DESC	manual segmentation using Xvoxtrace; surfaced with Synu using Nuage algorithm; tarfile contains all synu objects listed; the associated Viewdata file required by Synu for viewing; and Xvoxtrace file (pccor10mm.trace) used to contour the objects.
SEG_FILE_NAME	pccor10/pccor10_seg.tar
SURFACE_AREA	.685464 um2
THUMBNAIL	P1119/pccor10_st.jpg
TRACE_FILE	pccor10/mm.trace
VOLUME	.04332484 um3
SEGMENTED_OBJECT_ID	15
ANALYZE_DESC	SA and Vol measurements from Analyze
ANALYZE_DESC	SA and Vol measurements from Analyze
DOWNLOADABLE_FILE_DESC	Tar file containing original trace file (MM.trace) with manual contours produced with Xvoxtrace and the surface renderings of the dendritic shaft (shaft.synu) and the individual dendritic spines (sp*.synu) in Synu format, along with the Viewdata file required for viewing with Synuview.
IS_MANUAL	Y
NUMBER_OF_OBJECT	1
OBJECT_DESC	dendritic spine
OBJECT_NAME	sp10.synu
OBJECT_TYPE	surface
SEGMENTED_OBJ_2D_IMAGE	pccor10/pccor10.jpg
SEGMENTED_OBJECT_ID	15
SEGMENT_PERSON_NAME	Maryann Martone
SEG_DESC	manual segmentation using Xvoxtrace; surfaced with Synu using Nuage algorithm; tarfile contains all synu objects listed; the associated Viewdata file required by Synu for viewing; and Xvoxtrace file (pccor10mm.trace) used to contour the objects.

Segmentation -

SEG_FILE_NAME	pccor10/pccor10_seg.tar
SURFACE_AREA	.31772 um2
THUMBNAIL	P1119/pccor10_st.jpg
TRACE_FILE	pccor10/mm.trace
VOLUME	.013375336 um3
SEGMENTED_OBJECT_ID	17
ANALYZE_DESC	SA and Vol measurements from Analyze
ANALYZE_DESC	SA and Vol measurements from Analyze
DOWNLOADABLE_FILE_DESC	Tar file containing original trace file (MM.trace) with manual contours produced with Xvoxtrace and the surface renderings of the dendritic shaft (shaft.synu) and the individual dendritic spines (sp*.synu) in Synu format, along with the Viewdata file required for viewing with Synuview.
IS_MANUAL	Y
NUMBER_OF_OBJECT	1
OBJECT_DESC	dendritic spine
OBJECT_NAME	sp12.synu
OBJECT_TYPE	surface
SEGMENTED_OBJ_2D_IMAGE	pccor10/pccor10.jpg
SEGMENTED_OBJECT_ID	17
SEGMENT_PERSON_NAME	Maryann Martone
SEG_DESC	manual segmentation using Xvoxtrace; surfaced with Synu using Nuage algorithm; tarfile contains all synu objects listed; the associated Viewdata file required by Synu for viewing; and Xvoxtrace file (pccor10mm.trace) used to contour the objects.
SEG_FILE_NAME	pccor10/pccor10_seg.tar
SURFACE_AREA	.498888 um2
THUMBNAIL	P1119/pccor10_st.jpg
TRACE_FILE	pccor10/mm.trace
VOLUME	.021934848 um3
SEGMENTED_OBJECT_ID	19
ANALYZE_DESC	SA and Vol measurements from Analyze
ANALYZE_DESC	SA and Vol measurements from Analyze
DOWNLOADABLE_FILE_DESC	Tar file containing original trace file (MM.trace) with manual contours produced with Xvoxtrace and the surface renderings of the dendritic shaft (shaft.synu) and the individual dendritic spines (sp*.synu) in Synu format, along with the Viewdata file required for viewing with Synuview.
IS_MANUAL	Y
NUMBER_OF_OBJECT	1
OBJECT_DESC	dendritic spine
OBJECT_NAME	sp14.synu
OBJECT_TYPE	surface
SEGMENTED_OBJ_2D_IMAGE	pccor10/pccor10.jpg
SEGMENTED_OBJECT_ID	19
SEGMENT_PERSON_NAME	Maryann Martone

Segmentation -

SEG_DESC	manual segmentation using Xvoxtrace; surfaced with Synu using Nuage algorithm; tarfile contains all synu objects listed; the associated Viewdata file required by Synu for viewing; and Xvoxtrace file (pccor10mm.trace) used to contour the objects.
SEG_FILE_NAME	pccor10/pccor10_seg.tar
SURFACE_AREA	.668564 um2
THUMBNAIL	P1119/pccor10_st.jpg
TRACE_FILE	pccor10/mm.trace
VOLUME	.029914352 um3
SEGMENTED_OBJECT_ID	20
ANALYZE_DESC	SA and Vol measurements from Analyze
ANALYZE_DESC	SA and Vol measurements from Analyze
DOWNLOADABLE_FILE_DESC	Tar file containing original trace file (MM.trace) with manual contours produced with Xvoxtrace and the surface renderings of the dendritic shaft (shaft.synu) and the individual dendritic spines (sp*.synu) in Synu format, along with the Viewdata file required for viewing with Synuview.
IS_MANUAL	Y
NUMBER_OF_OBJECT	1
OBJECT_DESC	dendritic spine
OBJECT_NAME	sp15.synu
OBJECT_TYPE	surface
SEGMENTED_OBJ_2D_IMAGE	pccor10/pccor10.jpg
SEGMENTED_OBJECT_ID	20
SEGMENT_PERSON_NAME	Maryann Martone
SEG_DESC	manual segmentation using Xvoxtrace; surfaced with Synu using Nuage algorithm; tarfile contains all synu objects listed; the associated Viewdata file required by Synu for viewing; and Xvoxtrace file (pccor10mm.trace) used to contour the objects.
SEG_FILE_NAME	pccor10/pccor10_seg.tar
SURFACE_AREA	.658424 um2
THUMBNAIL	P1119/pccor10_st.jpg
TRACE_FILE	pccor10/mm.trace
VOLUME	.035433216 um3
SEGMENTED_OBJECT_ID	22
ANALYZE_DESC	SA and Vol measurements from Analyze
ANALYZE_DESC	SA and Vol measurements from Analyze
DOWNLOADABLE_FILE_DESC	Tar file containing original trace file (MM.trace) with manual contours produced with Xvoxtrace and the surface renderings of the dendritic shaft (shaft.synu) and the individual dendritic spines (sp*.synu) in Synu format, along with the Viewdata file required for viewing with Synuview.
IS_MANUAL	Y
NUMBER_OF_OBJECT	1
OBJECT_DESC	dendritic spine
OBJECT_NAME	sp17.synu

Segmentation -

OBJECT_TYPE	surface
SEGMENTED_OBJ_2D_IMAGE	pccor10/pccor10.jpg
SEGMENTED_OBJECT_ID	22
SEGMENT_PERSON_NAME	Maryann Martone
SEG_DESC	manual segmentation using Xvoxtrace; surfaced with Synu using Nuage algorithm; tarfile contains all synu objects listed; the associated Viewdata file required by Synu for viewing; and Xvoxtrace file (pccor10mm.trace) used to contour the objects.
SEG_FILE_NAME	pccor10/pccor10_seg.tar
SURFACE_AREA	.25012 um2
THUMBNAIL	P1119/pccor10_st.jpg
TRACE_FILE	pccor10/mm.trace
VOLUME	.008594664 um3
SEGMENTED_OBJECT_ID	23
ANALYZE_DESC	SA and Vol measurements from Analyze
ANALYZE_DESC	SA and Vol measurements from Analyze
DOWNLOADABLE_FILE_DESC	Tar file containing original trace file (MM.trace) with manual contours produced with Xvoxtrace and the surface renderings of the dendritic shaft (shaft.synu) and the individual dendritic spines (sp*.synu) in Synu format, along with the Viewdata file required for viewing with Synuview.
IS_MANUAL	Y
NUMBER_OF_OBJECT	1
OBJECT_DESC	dendritic spine
OBJECT_NAME	sp18.synu
OBJECT_TYPE	surface
SEGMENTED_OBJ_2D_IMAGE	pccor10/pccor10.jpg
SEGMENTED_OBJECT_ID	23
SEGMENT_PERSON_NAME	Maryann Martone
SEG_DESC	manual segmentation using Xvoxtrace; surfaced with Synu using Nuage algorithm; tarfile contains all synu objects listed; the associated Viewdata file required by Synu for viewing; and Xvoxtrace file (pccor10mm.trace) used to contour the objects.
SEG_FILE_NAME	pccor10/pccor10_seg.tar
SURFACE_AREA	.43264 um2
THUMBNAIL	P1119/pccor10_st.jpg
TRACE_FILE	pccor10/mm.trace
VOLUME	.02003664 um3
SEGMENTED_OBJECT_ID	25
ANALYZE_DESC	SA and Vol measurements from Analyze
ANALYZE_DESC	SA and Vol measurements from Analyze
DOWNLOADABLE_FILE_DESC	Tar file containing original trace file (MM.trace) with manual contours produced with Xvoxtrace and the surface renderings of the dendritic shaft (shaft.synu) and the individual dendritic spines (sp*.synu) in Synu format, along with the Viewdata file required for viewing with Synuview.

Segmentation -

IS_MANUAL	Y
NUMBER_OF_OBJECT	1
OBJECT_DESC	dendritic spine
OBJECT_NAME	sp2.synu
OBJECT_TYPE	surface
SEGMENTED_OBJ_2D_IMAGE	pccor10/pccor10.jpg
SEGMENTED_OBJECT_ID	25
SEGMENT_PERSON_NAME	Maryann Martone
SEG_DESC	manual segmentation using Xvoxtrace; surfaced with Synu using Nuage algorithm; tarfile contains all synu objects listed; the associated Viewdata file required by Synu for viewing; and Xvoxtrace file (pccor10mm.trace) used to contour the objects.
SEG_FILE_NAME	pccor10/pccor10_seg.tar
SURFACE_AREA	.367744 um2
THUMBNAIL	P1119/pccor10_st.jpg
TRACE_FILE	pccor10/mm.trace
VOLUME	.016837808 um3
SEGMENTED_OBJECT_ID	39
ANALYZE_DESC	SA and Vol measurements from Analyze
ANALYZE_DESC	SA and Vol measurements from Analyze
DOWNLOADABLE_FILE_DESC	Tar file containing original trace file (MM.trace) with manual contours produced with Xvoxtrace and the surface renderings of the dendritic shaft (shaft.synu) and the individual dendritic spines (sp*.synu) in Synu format, along with the Viewdata file required for viewing with Synuview.
IS_MANUAL	Y
NUMBER_OF_OBJECT	1
OBJECT_DESC	dendritic spine
OBJECT_NAME	sp33.synu
OBJECT_TYPE	surface
SEGMENTED_OBJ_2D_IMAGE	pccor10/pccor10.jpg
SEGMENTED_OBJECT_ID	39
SEGMENT_PERSON_NAME	Maryann Martone
SEG_DESC	manual segmentation using Xvoxtrace; surfaced with Synu using Nuage algorithm; tarfile contains all synu objects listed; the associated Viewdata file required by Synu for viewing; and Xvoxtrace file (pccor10mm.trace) used to contour the objects.
SEG_FILE_NAME	pccor10/pccor10_seg.tar
SURFACE_AREA	.918008 um2
THUMBNAIL	P1119/pccor10_st.jpg
TRACE_FILE	pccor10/mm.trace
VOLUME	.08102536 um3
SEGMENTED_OBJECT_ID	40
ANALYZE_DESC	SA and Vol measurements from Analyze
ANALYZE_DESC	SA and Vol measurements from Analyze

Segmentation -

DOWNLOADABLE_FILE_DESC	Tar file containing original trace file (MM.trace) with manual contours produced with Xvoxtrace and the surface renderings of the dendritic shaft (shaft.synu) and the individual dendritic spines (sp*.synu) in Synu format, along with the Viewdata file required for viewing with Synuview.
IS_MANUAL	Y
NUMBER_OF_OBJECT	1
OBJECT_DESC	dendritic spine
OBJECT_NAME	sp34.synu
OBJECT_TYPE	surface
SEGMENTED_OBJ_2D_IMAGE	pccor10/pccor10.jpg
SEGMENTED_OBJECT_ID	40
SEGMENT_PERSON_NAME	Maryann Martone
SEG_DESC	manual segmentation using Xvoxtrace; surfaced with Synu using Nuage algorithm; tarfile contains all synu objects listed; the associated Viewdata file required by Synu for viewing; and Xvoxtrace file (pccor10mm.trace) used to contour the objects.
SEG_FILE_NAME	pccor10/pccor10_seg.tar
SURFACE_AREA	.70304 um ²
THUMBNAIL	P1119/pccor10_st.jpg
TRACE_FILE	pccor10/mm.trace
VOLUME	.036347168 um ³
SEGMENTED_OBJECT_ID	41
ANALYZE_DESC	SA and Vol measurements from Analyze
ANALYZE_DESC	SA and Vol measurements from Analyze
DOWNLOADABLE_FILE_DESC	Tar file containing original trace file (MM.trace) with manual contours produced with Xvoxtrace and the surface renderings of the dendritic shaft (shaft.synu) and the individual dendritic spines (sp*.synu) in Synu format, along with the Viewdata file required for viewing with Synuview.
IS_MANUAL	Y
NUMBER_OF_OBJECT	1
OBJECT_DESC	dendritic spine
OBJECT_NAME	sp35.synu
OBJECT_TYPE	surface
SEGMENTED_OBJ_2D_IMAGE	pccor10/pccor10.jpg
SEGMENTED_OBJECT_ID	41
SEGMENT_PERSON_NAME	Maryann Martone
SEG_DESC	manual segmentation using Xvoxtrace; surfaced with Synu using Nuage algorithm; tarfile contains all synu objects listed; the associated Viewdata file required by Synu for viewing; and Xvoxtrace file (pccor10mm.trace) used to contour the objects.
SEG_FILE_NAME	pccor10/pccor10_seg.tar
SURFACE_AREA	.423852 um ²
THUMBNAIL	P1119/pccor10_st.jpg
TRACE_FILE	pccor10/mm.trace

Segmentation -

VOLUME	.016732352 um3
SEGMENTED_OBJECT_ID	43
ANALYZE_DESC	SA and Vol measurements from Analyze
ANALYZE_DESC	SA and Vol measurements from Analyze
DOWNLOADABLE_FILE_DESC	Tar file containing original trace file (MM.trace) with manual contours produced with Xvoxtrace and the surface renderings of the dendritic shaft (shaft.synu) and the individual dendritic spines (sp*.synu) in Synu format, along with the Viewdata file required for viewing with Synuview.
IS_MANUAL	Y
NUMBER_OF_OBJECT	1
OBJECT_DESC	dendritic spine
OBJECT_NAME	sp37.synu
OBJECT_TYPE	surface
SEGMENTED_OBJ_2D_IMAGE	pccor10/pccor10.jpg
SEGMENTED_OBJECT_ID	43
SEGMENT_PERSON_NAME	Maryann Martone
SEG_DESC	manual segmentation using Xvoxtrace; surfaced with Synu using Nuage algorithm; tarfile contains all synu objects listed; the associated Viewdata file required by Synu for viewing; and Xvoxtrace file (pccor10mm.trace) used to contour the objects.
SEG_FILE_NAME	pccor10/pccor10_seg.tar
SURFACE_AREA	.75374 um2
THUMBNAIL	P1119/pccor10_st.jpg
TRACE_FILE	pccor10/mm.trace
VOLUME	.025731264 um3
SEGMENTED_OBJECT_ID	45
ANALYZE_DESC	SA and Vol measurements from Analyze
ANALYZE_DESC	SA and Vol measurements from Analyze
DOWNLOADABLE_FILE_DESC	Tar file containing original trace file (MM.trace) with manual contours produced with Xvoxtrace and the surface renderings of the dendritic shaft (shaft.synu) and the individual dendritic spines (sp*.synu) in Synu format, along with the Viewdata file required for viewing with Synuview.
IS_MANUAL	Y
NUMBER_OF_OBJECT	1
OBJECT_DESC	dendritic spine
OBJECT_NAME	sp39.synu
OBJECT_TYPE	surface
SEGMENTED_OBJ_2D_IMAGE	pccor10/pccor10.jpg
SEGMENTED_OBJECT_ID	45
SEGMENT_PERSON_NAME	Maryann Martone
SEG_DESC	manual segmentation using Xvoxtrace; surfaced with Synu using Nuage algorithm; tarfile contains all synu objects listed; the associated Viewdata file required by Synu for viewing; and Xvoxtrace file (pccor10mm.trace) used to contour the objects.

Segmentation -

SEG_FILE_NAME	pccor10/pccor10_seg.tar
SURFACE_AREA	1.452048 um2
THUMBNAIL	P1119/pccor10_st.jpg
TRACE_FILE	pccor10/mm.trace
VOLUME	.080603536 um3
SEGMENTED_OBJECT_ID	47
ANALYZE_DESC	SA and Vol measurements from Analyze
ANALYZE_DESC	SA and Vol measurements from Analyze
DOWNLOADABLE_FILE_DESC	Tar file containing original trace file (MM.trace) with manual contours produced with Xvoxtrace and the surface renderings of the dendritic shaft (shaft.synu) and the individual dendritic spines (sp*.synu) in Synu format, along with the Viewdata file required for viewing with Synuview.
IS_MANUAL	Y
NUMBER_OF_OBJECT	1
OBJECT_DESC	dendritic spine
OBJECT_NAME	sp40.synu
OBJECT_TYPE	surface
SEGMENTED_OBJ_2D_IMAGE	pccor10/pccor10.jpg
SEGMENTED_OBJECT_ID	47
SEGMENT_PERSON_NAME	Maryann Martone
SEG_DESC	manual segmentation using Xvoxtrace; surfaced with Synu using Nuage algorithm; tarfile contains all synu objects listed; the associated Viewdata file required by Synu for viewing; and Xvoxtrace file (pccor10mm.trace) used to contour the objects.
SEG_FILE_NAME	pccor10/pccor10_seg.tar
SURFACE_AREA	.833508 um2
THUMBNAIL	P1119/pccor10_st.jpg
TRACE_FILE	pccor10/mm.trace
VOLUME	.04675216 um3
SEGMENTED_OBJECT_ID	49
ANALYZE_DESC	SA and Vol measurements from Analyze
ANALYZE_DESC	SA and Vol measurements from Analyze
DOWNLOADABLE_FILE_DESC	Tar file containing original trace file (MM.trace) with manual contours produced with Xvoxtrace and the surface renderings of the dendritic shaft (shaft.synu) and the individual dendritic spines (sp*.synu) in Synu format, along with the Viewdata file required for viewing with Synuview.
IS_MANUAL	Y
NUMBER_OF_OBJECT	1
OBJECT_DESC	dendritic spine
OBJECT_NAME	sp42.synu
OBJECT_TYPE	surface
SEGMENTED_OBJ_2D_IMAGE	pccor10/pccor10.jpg
SEGMENTED_OBJECT_ID	49
SEGMENT_PERSON_NAME	Maryann Martone

Segmentation -

SEG_DESC	manual segmentation using Xvoxtrace; surfaced with Synu using Nuage algorithm; tarfile contains all synu objects listed; the associated Viewdata file required by Synu for viewing; and Xvoxtrace file (pccor10mm.trace) used to contour the objects.
SEG_FILE_NAME	pccor10/pccor10_seg.tar
SURFACE_AREA	.685464 um2
THUMBNAIL	P1119/pccor10_st.jpg
TRACE_FILE	pccor10/mm.trace
VOLUME	.032093776 um3
SEGMENTED_OBJECT_ID	50
ANALYZE_DESC	SA and Vol measurements from Analyze
ANALYZE_DESC	SA and Vol measurements from Analyze
DOWNLOADABLE_FILE_DESC	Tar file containing original trace file (MM.trace) with manual contours produced with Xvoxtrace and the surface renderings of the dendritic shaft (shaft.synu) and the individual dendritic spines (sp*.synu) in Synu format, along with the Viewdata file required for viewing with Synuview.
IS_MANUAL	Y
NUMBER_OF_OBJECT	1
OBJECT_DESC	dendritic spine
OBJECT_NAME	sp43.synu
OBJECT_TYPE	surface
SEGMENTED_OBJ_2D_IMAGE	pccor10/pccor10.jpg
SEGMENTED_OBJECT_ID	50
SEGMENT_PERSON_NAME	Maryann Martone
SEG_DESC	manual segmentation using Xvoxtrace; surfaced with Synu using Nuage algorithm; tarfile contains all synu objects listed; the associated Viewdata file required by Synu for viewing; and Xvoxtrace file (pccor10mm.trace) used to contour the objects.
SEG_FILE_NAME	pccor10/pccor10_seg.tar
SURFACE_AREA	.774696 um2
THUMBNAIL	P1119/pccor10_st.jpg
TRACE_FILE	pccor10/mm.trace
VOLUME	.033886528 um3
SEGMENTED_OBJECT_ID	52
ANALYZE_DESC	SA and Vol measurements from Analyze
ANALYZE_DESC	SA and Vol measurements from Analyze
DOWNLOADABLE_FILE_DESC	Tar file containing original trace file (MM.trace) with manual contours produced with Xvoxtrace and the surface renderings of the dendritic shaft (shaft.synu) and the individual dendritic spines (sp*.synu) in Synu format, along with the Viewdata file required for viewing with Synuview.
IS_MANUAL	Y
NUMBER_OF_OBJECT	1
OBJECT_DESC	dendritic spine
OBJECT_NAME	sp45.synu

Segmentation -

OBJECT_TYPE	surface
SEGMENTED_OBJ_2D_IMAGE	pccor10/pccor10.jpg
SEGMENTED_OBJECT_ID	52
SEGMENT_PERSON_NAME	Maryann Martone
SEG_DESC	manual segmentation using Xvoxtrace; surfaced with Synu using Nuage algorithm; tarfile contains all synu objects listed; the associated Viewdata file required by Synu for viewing; and Xvoxtrace file (pccor10mm.trace) used to contour the objects.
SEG_FILE_NAME	pccor10/pccor10_seg.tar
SURFACE_AREA	.559052 um2
THUMBNAIL	P1119/pccor10_st.jpg
TRACE_FILE	pccor10/mm.trace
VOLUME	.035257456 um3
SEGMENTED_OBJECT_ID	54
ANALYZE_DESC	SA and Vol measurements from Analyze
ANALYZE_DESC	SA and Vol measurements from Analyze
DOWNLOADABLE_FILE_DESC	Tar file containing original trace file (MM.trace) with manual contours produced with Xvoxtrace and the surface renderings of the dendritic shaft (shaft.synu) and the individual dendritic spines (sp*.synu) in Synu format, along with the Viewdata file required for viewing with Synuview.
IS_MANUAL	Y
NUMBER_OF_OBJECT	1
OBJECT_DESC	dendritic spine
OBJECT_NAME	sp47.synu
OBJECT_TYPE	surface
SEGMENTED_OBJ_2D_IMAGE	pccor10/pccor10.jpg
SEGMENTED_OBJECT_ID	54
SEGMENT_PERSON_NAME	Maryann Martone
SEG_DESC	manual segmentation using Xvoxtrace; surfaced with Synu using Nuage algorithm; tarfile contains all synu objects listed; the associated Viewdata file required by Synu for viewing; and Xvoxtrace file (pccor10mm.trace) used to contour the objects.
SEG_FILE_NAME	pccor10/pccor10_seg.tar
SURFACE_AREA	.475228 um2
THUMBNAIL	P1119/pccor10_st.jpg
TRACE_FILE	pccor10/mm.trace
VOLUME	.015132936 um3
SEGMENTED_OBJECT_ID	28
ANALYZE_DESC	SA and Vol measurements from Analyze
ANALYZE_DESC	SA and Vol measurements from Analyze
DOWNLOADABLE_FILE_DESC	Tar file containing original trace file (MM.trace) with manual contours produced with Xvoxtrace and the surface renderings of the dendritic shaft (shaft.synu) and the individual dendritic spines (sp*.synu) in Synu format, along with the Viewdata file required for viewing with Synuview.

Segmentation -

IS_MANUAL	Y
NUMBER_OF_OBJECT	1
OBJECT_DESC	dendritic spine/xz
OBJECT_NAME	sp22xz.synu
OBJECT_TYPE	surface
SEGMENTED_OBJ_2D_IMAGE	pccor10/pccor10.jpg
SEGMENTED_OBJECT_ID	28
SEGMENT_PERSON_NAME	Maryann Martone
SEG_DESC	manual segmentation using Xvoxtrace; surfaced with Synu using Nuage algorithm; tarfile contains all synu objects listed; the associated Viewdata file required by Synu for viewing; and Xvoxtrace file (pccor10mm.trace) used to contour the objects.
SEG_FILE_NAME	pccor10/pccor10_seg.tar
SURFACE_AREA	.254852 um2
THUMBNAIL	P1119/pccor10_st.jpg
TRACE_FILE	pccor10/mm.trace
VOLUME	.009332856 um3
SEGMENTED_OBJECT_ID	29
ANALYZE_DESC	SA and Vol measurements from Analyze
ANALYZE_DESC	SA and Vol measurements from Analyze
DOWNLOADABLE_FILE_DESC	Tar file containing original trace file (MM.trace) with manual contours produced with Xvoxtrace and the surface renderings of the dendritic shaft (shaft.synu) and the individual dendritic spines (sp*.synu) in Synu format, along with the Viewdata file required for viewing with Synuview.
IS_MANUAL	Y
NUMBER_OF_OBJECT	1
OBJECT_DESC	dendritic spine/xz
OBJECT_NAME	sp23xz.synu
OBJECT_TYPE	surface
SEGMENTED_OBJ_2D_IMAGE	pccor10/pccor10.jpg
SEGMENTED_OBJECT_ID	29
SEGMENT_PERSON_NAME	Maryann Martone
SEG_DESC	manual segmentation using Xvoxtrace; surfaced with Synu using Nuage algorithm; tarfile contains all synu objects listed; the associated Viewdata file required by Synu for viewing; and Xvoxtrace file (pccor10mm.trace) used to contour the objects.
SEG_FILE_NAME	pccor10/pccor10_seg.tar
SURFACE_AREA	.502268 um2
THUMBNAIL	P1119/pccor10_st.jpg
TRACE_FILE	pccor10/mm.trace
VOLUME	.03198832 um3
SEGMENTED_OBJECT_ID	30
ANALYZE_DESC	SA and Vol measurements from Analyze
ANALYZE_DESC	SA and Vol measurements from Analyze

Segmentation -

DOWNLOADABLE_FILE_DESC	Tar file containing original trace file (MM.trace) with manual contours produced with Xvoxtrace and the surface renderings of the dendritic shaft (shaft.synu) and the individual dendritic spines (sp*.synu) in Synu format, along with the Viewdata file required for viewing with Synuview.
IS_MANUAL	Y
NUMBER_OF_OBJECT	1
OBJECT_DESC	dendritic spine/xz
OBJECT_NAME	sp24xz.synu
OBJECT_TYPE	surface
SEGMENTED_OBJ_2D_IMAGE	pccor10/pccor10.jpg
SEGMENTED_OBJECT_ID	30
SEGMENT_PERSON_NAME	Maryann Martone
SEG_DESC	manual segmentation using Xvoxtrace; surfaced with Synu using Nuage algorithm; tarfile contains all synu objects listed; the associated Viewdata file required by Synu for viewing; and Xvoxtrace file (pccor10mm.trace) used to contour the objects.
SEG_FILE_NAME	pccor10/pccor10_seg.tar
SURFACE_AREA	.445484 um2
THUMBNAIL	P1119/pccor10_st.jpg
TRACE_FILE	pccor10/mm.trace
VOLUME	.023657296 um3
SEGMENTED_OBJECT_ID	32
ANALYZE_DESC	SA and Vol measurements from Analyze
ANALYZE_DESC	SA and Vol measurements from Analyze
DOWNLOADABLE_FILE_DESC	Tar file containing original trace file (MM.trace) with manual contours produced with Xvoxtrace and the surface renderings of the dendritic shaft (shaft.synu) and the individual dendritic spines (sp*.synu) in Synu format, along with the Viewdata file required for viewing with Synuview.
IS_MANUAL	Y
NUMBER_OF_OBJECT	1
OBJECT_DESC	dendritic spine/xz
OBJECT_NAME	sp26xz.synu
OBJECT_TYPE	surface
SEGMENTED_OBJ_2D_IMAGE	pccor10/pccor10.jpg
SEGMENTED_OBJECT_ID	32
SEGMENT_PERSON_NAME	Maryann Martone
SEG_DESC	manual segmentation using Xvoxtrace; surfaced with Synu using Nuage algorithm; tarfile contains all synu objects listed; the associated Viewdata file required by Synu for viewing; and Xvoxtrace file (pccor10mm.trace) used to contour the objects.
SEG_FILE_NAME	pccor10/pccor10_seg.tar
SURFACE_AREA	.7267 um2
THUMBNAIL	P1119/pccor10_st.jpg
TRACE_FILE	pccor10/mm.trace

Segmentation -

VOLUME	.018156008 um3
SEGMENTED_OBJECT_ID	33
ANALYZE_DESC	SA and Vol measurements from Analyze
ANALYZE_DESC	SA and Vol measurements from Analyze
DOWNLOADABLE_FILE_DESC	Tar file containing original trace file (MM.trace) with manual contours produced with Xvoxtrace and the surface renderings of the dendritic shaft (shaft.synu) and the individual dendritic spines (sp*.synu) in Synu format, along with the Viewdata file required for viewing with Synuview.
IS_MANUAL	Y
NUMBER_OF_OBJECT	1
OBJECT_DESC	dendritic spine/xz
OBJECT_NAME	sp27xz.synu
OBJECT_TYPE	surface
SEGMENTED_OBJ_2D_IMAGE	pccor10/pccor10.jpg
SEGMENTED_OBJECT_ID	33
SEGMENT_PERSON_NAME	Maryann Martone
SEG_DESC	manual segmentation using Xvoxtrace; surfaced with Synu using Nuage algorithm; tarfile contains all synu objects listed; the associated Viewdata file required by Synu for viewing; and Xvoxtrace file (pccor10mm.trace) used to contour the objects.
SEG_FILE_NAME	pccor10/pccor10_seg.tar
SURFACE_AREA	.588796 um2
THUMBNAIL	P1119/pccor10_st.jpg
TRACE_FILE	pccor10/mm.trace
VOLUME	.027840384 um3
SEGMENTED_OBJECT_ID	34
ANALYZE_DESC	SA and Vol measurements from Analyze
ANALYZE_DESC	SA and Vol measurements from Analyze
DOWNLOADABLE_FILE_DESC	Tar file containing original trace file (MM.trace) with manual contours produced with Xvoxtrace and the surface renderings of the dendritic shaft (shaft.synu) and the individual dendritic spines (sp*.synu) in Synu format, along with the Viewdata file required for viewing with Synuview.
IS_MANUAL	Y
NUMBER_OF_OBJECT	1
OBJECT_DESC	dendritic spine/xz
OBJECT_NAME	sp28xz.synu
OBJECT_TYPE	surface
SEGMENTED_OBJ_2D_IMAGE	pccor10/pccor10.jpg
SEGMENTED_OBJECT_ID	34
SEGMENT_PERSON_NAME	Maryann Martone
SEG_DESC	manual segmentation using Xvoxtrace; surfaced with Synu using Nuage algorithm; tarfile contains all synu objects listed; the associated Viewdata file required by Synu for viewing; and Xvoxtrace file (pccor10mm.trace) used to contour the objects.

Segmentation -

SEG_FILE_NAME	pccor10/pccor10_seg.tar
SURFACE_AREA	.147368 um2
THUMBNAIL	P1119/pccor10_st.jpg
TRACE_FILE	pccor10/mm.trace
VOLUME	.004007328 um3
SEGMENTED_OBJECT_ID	35
ANALYZE_DESC	SA and Vol measurements from Analyze
ANALYZE_DESC	SA and Vol measurements from Analyze
DOWNLOADABLE_FILE_DESC	Tar file containing original trace file (MM.trace) with manual contours produced with Xvoxtrace and the surface renderings of the dendritic shaft (shaft.synu) and the individual dendritic spines (sp*.synu) in Synu format, along with the Viewdata file required for viewing with Synuview.
IS_MANUAL	Y
NUMBER_OF_OBJECT	1
OBJECT_DESC	dendritic spine/xz
OBJECT_NAME	sp29xz.synu
OBJECT_TYPE	surface
SEGMENTED_OBJ_2D_IMAGE	pccor10/pccor10.jpg
SEGMENTED_OBJECT_ID	35
SEGMENT_PERSON_NAME	Maryann Martone
SEG_DESC	manual segmentation using Xvoxtrace; surfaced with Synu using Nuage algorithm; tarfile contains all synu objects listed; the associated Viewdata file required by Synu for viewing; and Xvoxtrace file (pccor10mm.trace) used to contour the objects.
SEG_FILE_NAME	pccor10/pccor10_seg.tar
SURFACE_AREA	.441428 um2
THUMBNAIL	P1119/pccor10_st.jpg
TRACE_FILE	pccor10/mm.trace
VOLUME	.011090456 um3
SEGMENTED_OBJECT_ID	37
ANALYZE_DESC	SA and Vol measurements from Analyze
ANALYZE_DESC	SA and Vol measurements from Analyze
DOWNLOADABLE_FILE_DESC	Tar file containing original trace file (MM.trace) with manual contours produced with Xvoxtrace and the surface renderings of the dendritic shaft (shaft.synu) and the individual dendritic spines (sp*.synu) in Synu format, along with the Viewdata file required for viewing with Synuview.
IS_MANUAL	Y
NUMBER_OF_OBJECT	1
OBJECT_DESC	dendritic spine/xz
OBJECT_NAME	sp31xz.synu
OBJECT_TYPE	surface
SEGMENTED_OBJ_2D_IMAGE	pccor10/pccor10.jpg
SEGMENTED_OBJECT_ID	37
SEGMENT_PERSON_NAME	Maryann Martone

Segmentation -

SEG_DESC	manual segmentation using Xvoxtrace; surfaced with Synu using Nuage algorithm; tarfile contains all synu objects listed; the associated Viewdata file required by Synu for viewing; and Xvoxtrace file (pccor10mm.trace) used to contour the objects.
SEG_FILE_NAME	pccor10/pccor10_seg.tar
SURFACE_AREA	.507 um2
THUMBNAIL	P1119/pccor10_st.jpg
TRACE_FILE	pccor10/mm.trace
VOLUME	.032673784 um3
SEGMENTED_OBJECT_ID	38
ANALYZE_DESC	SA and Vol measurements from Analyze
ANALYZE_DESC	SA and Vol measurements from Analyze
DOWNLOADABLE_FILE_DESC	Tar file containing original trace file (MM.trace) with manual contours produced with Xvoxtrace and the surface renderings of the dendritic shaft (shaft.synu) and the individual dendritic spines (sp*.synu) in Synu format, along with the Viewdata file required for viewing with Synuview.
IS_MANUAL	Y
NUMBER_OF_OBJECT	1
OBJECT_DESC	dendritic spine/xz
OBJECT_NAME	sp32xz.synu
OBJECT_TYPE	surface
SEGMENTED_OBJ_2D_IMAGE	pccor10/pccor10.jpg
SEGMENTED_OBJECT_ID	38
SEGMENT_PERSON_NAME	Maryann Martone
SEG_DESC	manual segmentation using Xvoxtrace; surfaced with Synu using Nuage algorithm; tarfile contains all synu objects listed; the associated Viewdata file required by Synu for viewing; and Xvoxtrace file (pccor10mm.trace) used to contour the objects.
SEG_FILE_NAME	pccor10/pccor10_seg.tar
SURFACE_AREA	.830128 um2
THUMBNAIL	P1119/pccor10_st.jpg
TRACE_FILE	pccor10/mm.trace
VOLUME	.051269192 um3
SEGMENTED_OBJECT_ID	55
ANALYZE_DESC	SA and Vol measurements from Analyze
ANALYZE_DESC	SA and Vol measurements from Analyze
DOWNLOADABLE_FILE_DESC	Tar file containing original trace file (MM.trace) with manual contours produced with Xvoxtrace and the surface renderings of the dendritic shaft (shaft.synu) and the individual dendritic spines (sp*.synu) in Synu format, along with the Viewdata file required for viewing with Synuview.
IS_MANUAL	Y
NUMBER_OF_OBJECT	1
OBJECT_DESC	dendritic spine/xz
OBJECT_NAME	sp48xz.synu

Segmentation -

OBJECT_TYPE	surface
SEGMENTED_OBJ_2D_IMAGE	pccor10/pccor10.jpg
SEGMENTED_OBJECT_ID	55
SEGMENT_PERSON_NAME	Maryann Martone
SEG_DESC	manual segmentation using Xvoxtrace; surfaced with Synu using Nuage algorithm; tarfile contains all synu objects listed; the associated Viewdata file required by Synu for viewing; and Xvoxtrace file (pccor10mm.trace) used to contour the objects.
SEG_FILE_NAME	pccor10/pccor10_seg.tar
SURFACE_AREA	.756444 um2
THUMBNAIL	P1119/pccor10_st.jpg
TRACE_FILE	pccor10/mm.trace
VOLUME	.047033376 um3
SEGMENTED_OBJECT_ID	62
ANALYZE_DESC	SA and Vol measurements from Analyze
ANALYZE_DESC	SA and Vol measurements from Analyze
DOWNLOADABLE_FILE_DESC	Tar file containing original trace file (MM.trace) with manual contours produced with Xvoxtrace and the surface renderings of the dendritic shaft (shaft.synu) and the individual dendritic spines (sp*.synu) in Synu format, along with the Viewdata file required for viewing with Synuview.
IS_MANUAL	Y
NUMBER_OF_OBJECT	1
OBJECT_DESC	dendritic spine/xz
OBJECT_NAME	sp55xz.synu
OBJECT_TYPE	surface
SEGMENTED_OBJ_2D_IMAGE	pccor10/pccor10.jpg
SEGMENTED_OBJECT_ID	62
SEGMENT_PERSON_NAME	Maryann Martone
SEG_DESC	manual segmentation using Xvoxtrace; surfaced with Synu using Nuage algorithm; tarfile contains all synu objects listed; the associated Viewdata file required by Synu for viewing; and Xvoxtrace file (pccor10mm.trace) used to contour the objects.
SEG_FILE_NAME	pccor10/pccor10_seg.tar
SURFACE_AREA	1.38242 um2
THUMBNAIL	P1119/pccor10_st.jpg
TRACE_FILE	pccor10/mm.trace
VOLUME	.055733496 um3
SEGMENTED_OBJECT_ID	63
ANALYZE_DESC	SA and Vol measurements from Analyze
ANALYZE_DESC	SA and Vol measurements from Analyze
DOWNLOADABLE_FILE_DESC	Tar file containing original trace file (MM.trace) with manual contours produced with Xvoxtrace and the surface renderings of the dendritic shaft (shaft.synu) and the individual dendritic spines (sp*.synu) in Synu format, along with the Viewdata file required for viewing with Synuview.

Segmentation -

IS_MANUAL	Y
NUMBER_OF_OBJECT	1
OBJECT_DESC	dendritic spine/xz
OBJECT_NAME	sp56xz.synu
OBJECT_TYPE	surface
SEGMENTED_OBJ_2D_IMAGE	pccor10/pccor10.jpg
SEGMENTED_OBJECT_ID	63
SEGMENT_PERSON_NAME	Maryann Martone
SEG_DESC	manual segmentation using Xvoxtrace; surfaced with Synu using Nuage algorithm; tarfile contains all synu objects listed; the associated Viewdata file required by Synu for viewing; and Xvoxtrace file (pccor10mm.trace) used to contour the objects.
SEG_FILE_NAME	pccor10/pccor10_seg.tar
SURFACE_AREA	.568516 um2
THUMBNAIL	P1119/pccor10_st.jpg
TRACE_FILE	pccor10/mm.trace
VOLUME	.02487004 um3
SEGMENTED_OBJECT_ID	65
ANALYZE_DESC	SA and Vol measurements from Analyze
ANALYZE_DESC	SA and Vol measurements from Analyze
DOWNLOADABLE_FILE_DESC	Tar file containing original trace file (MM.trace) with manual contours produced with Xvoxtrace and the surface renderings of the dendritic shaft (shaft.synu) and the individual dendritic spines (sp*.synu) in Synu format, along with the Viewdata file required for viewing with Synuview.
IS_MANUAL	Y
NUMBER_OF_OBJECT	1
OBJECT_DESC	dendritic spine/xz
OBJECT_NAME	sp58xz.synu
OBJECT_TYPE	surface
SEGMENTED_OBJ_2D_IMAGE	pccor10/pccor10.jpg
SEGMENTED_OBJECT_ID	65
SEGMENT_PERSON_NAME	Maryann Martone
SEG_DESC	manual segmentation using Xvoxtrace; surfaced with Synu using Nuage algorithm; tarfile contains all synu objects listed; the associated Viewdata file required by Synu for viewing; and Xvoxtrace file (pccor10mm.trace) used to contour the objects.
SEG_FILE_NAME	pccor10/pccor10_seg.tar
SURFACE_AREA	.73346 um2
THUMBNAIL	P1119/pccor10_st.jpg
TRACE_FILE	pccor10/mm.trace
VOLUME	.043272112 um3
SEGMENTED_OBJECT_ID	67
ANALYZE_DESC	SA and Vol measurements from Analyze
ANALYZE_DESC	SA and Vol measurements from Analyze

Segmentation -

DOWNLOADABLE_FILE_DESC	Tar file containing original trace file (MM.trace) with manual contours produced with Xvoxtrace and the surface renderings of the dendritic shaft (shaft.synu) and the individual dendritic spines (sp*.synu) in Synu format, along with the Viewdata file required for viewing with Synuview.
IS_MANUAL	Y
NUMBER_OF_OBJECT	1
OBJECT_DESC	dendritic spine/xz
OBJECT_NAME	sp60xz.synu
OBJECT_TYPE	surface
SEGMENTED_OBJ_2D_IMAGE	pccor10/pccor10.jpg
SEGMENTED_OBJECT_ID	67
SEGMENT_PERSON_NAME	Maryann Martone
SEG_DESC	manual segmentation using Xvoxtrace; surfaced with Synu using Nuage algorithm; tarfile contains all synu objects listed; the associated Viewdata file required by Synu for viewing; and Xvoxtrace file (pccor10mm.trace) used to contour the objects.
SEG_FILE_NAME	pccor10/pccor10_seg.tar
SURFACE_AREA	.38532 um ²
THUMBNAIL	P1119/pccor10_st.jpg
TRACE_FILE	pccor10/mm.trace
VOLUME	.026522184 um ³
SEGMENTED_OBJECT_ID	69
ANALYZE_DESC	SA and Vol measurements from Analyze
ANALYZE_DESC	SA and Vol measurements from Analyze
DOWNLOADABLE_FILE_DESC	Tar file containing original trace file (MM.trace) with manual contours produced with Xvoxtrace and the surface renderings of the dendritic shaft (shaft.synu) and the individual dendritic spines (sp*.synu) in Synu format, along with the Viewdata file required for viewing with Synuview.
IS_MANUAL	Y
NUMBER_OF_OBJECT	1
OBJECT_DESC	dendritic spine/partial spine"
OBJECT_NAME	sp62pt.synu
OBJECT_TYPE	surface
SEGMENTED_OBJ_2D_IMAGE	pccor10/pccor10.jpg
SEGMENTED_OBJECT_ID	69
SEGMENT_PERSON_NAME	Maryann Martone
SEG_DESC	manual segmentation using Xvoxtrace; surfaced with Synu using Nuage algorithm; tarfile contains all synu objects listed; the associated Viewdata file required by Synu for viewing; and Xvoxtrace file (pccor10mm.trace) used to contour the objects.
SEG_FILE_NAME	pccor10/pccor10_seg.tar
THUMBNAIL	P1119/pccor10_st.jpg
TRACE_FILE	pccor10/mm.trace
SEGMENTED_OBJECT_ID	70

Segmentation -

ANALYZE_DESC	SA and Vol measurements from Analyze
ANALYZE_DESC	SA and Vol measurements from Analyze
DOWNLOADABLE_FILE_DESC	Tar file containing original trace file (MM.trace) with manual contours produced with Xvoxtrace and the surface renderings of the dendritic shaft (shaft.synu) and the individual dendritic spines (sp*.synu) in Synu format, along with the Viewdata file required for viewing with Synuvview.
IS_MANUAL	Y
NUMBER_OF_OBJECT	1
OBJECT_DESC	dendritic spine/xz
OBJECT_NAME	sp63xz.synu
OBJECT_TYPE	surface
SEGMENTED_OBJ_2D_IMAGE	pccor10/pccor10.jpg
SEGMENTED_OBJECT_ID	70
SEGMENT_PERSON_NAME	Maryann Martone
SEG_DESC	manual segmentation using Xvoxtrace; surfaced with Synu using Nuage algorithm; tarfile contains all synu objects listed; the associated Viewdata file required by Synu for viewing; and Xvoxtrace file (pccor10mm.trace) used to contour the objects.
SEG_FILE_NAME	pccor10/pccor10_seg.tar
SURFACE_AREA	.489424 um2
THUMBNAIL	P1119/pccor10_st.jpg
TRACE_FILE	pccor10/mm.trace
VOLUME	.029510104 um3
SEGMENTED_OBJECT_ID	71
ANALYZE_DESC	SA and Vol measurements from Analyze
ANALYZE_DESC	SA and Vol measurements from Analyze
DOWNLOADABLE_FILE_DESC	Tar file containing original trace file (MM.trace) with manual contours produced with Xvoxtrace and the surface renderings of the dendritic shaft (shaft.synu) and the individual dendritic spines (sp*.synu) in Synu format, along with the Viewdata file required for viewing with Synuvview.
IS_MANUAL	Y
NUMBER_OF_OBJECT	1
OBJECT_DESC	dendritic spine/xz
OBJECT_NAME	sp64xz.synu
OBJECT_TYPE	surface
SEGMENTED_OBJ_2D_IMAGE	pccor10/pccor10.jpg
SEGMENTED_OBJECT_ID	71
SEGMENT_PERSON_NAME	Maryann Martone
SEG_DESC	manual segmentation using Xvoxtrace; surfaced with Synu using Nuage algorithm; tarfile contains all synu objects listed; the associated Viewdata file required by Synu for viewing; and Xvoxtrace file (pccor10mm.trace) used to contour the objects.
SEG_FILE_NAME	pccor10/pccor10_seg.tar
SURFACE_AREA	.739544 um2

Segmentation -

THUMBNAIL	P1119/pccor10_st.jpg
TRACE_FILE	pccor10/mm.trace
VOLUME	.027980992 um3
SEGMENTED_OBJECT_ID	56
ANALYZE_DESC	SA and Vol measurements from Analyze
ANALYZE_DESC	SA and Vol measurements from Analyze
DOWNLOADABLE_FILE_DESC	Tar file containing original trace file (MM.trace) with manual contours produced with Xvoxtrace and the surface renderings of the dendritic shaft (shaft.synu) and the individual dendritic spines (sp*.synu) in Synu format, along with the Viewdata file required for viewing with Synuview.
IS_MANUAL	Y
NUMBER_OF_OBJECT	1
OBJECT_DESC	dendritic spine
OBJECT_NAME	sp49.synu
OBJECT_TYPE	surface
SEGMENTED_OBJ_2D_IMAGE	pccor10/pccor10.jpg
SEGMENTED_OBJECT_ID	56
SEGMENT_PERSON_NAME	Maryann Martone
SEG_DESC	manual segmentation using Xvoxtrace; surfaced with Synu using Nuage algorithm; tarfile contains all synu objects listed; the associated Viewdata file required by Synu for viewing; and Xvoxtrace file (pccor10mm.trace) used to contour the objects.
SEG_FILE_NAME	pccor10/pccor10_seg.tar
SURFACE_AREA	.765908 um2
THUMBNAIL	P1119/pccor10_st.jpg
TRACE_FILE	pccor10/mm.trace
VOLUME	.03093376 um3
SEGMENTED_OBJECT_ID	57
ANALYZE_DESC	SA and Vol measurements from Analyze
ANALYZE_DESC	SA and Vol measurements from Analyze
DOWNLOADABLE_FILE_DESC	Tar file containing original trace file (MM.trace) with manual contours produced with Xvoxtrace and the surface renderings of the dendritic shaft (shaft.synu) and the individual dendritic spines (sp*.synu) in Synu format, along with the Viewdata file required for viewing with Synuview.
IS_MANUAL	Y
NUMBER_OF_OBJECT	1
OBJECT_DESC	dendritic spine
OBJECT_NAME	sp5.synu
OBJECT_TYPE	surface
SEGMENTED_OBJ_2D_IMAGE	pccor10/pccor10.jpg
SEGMENTED_OBJECT_ID	57
SEGMENT_PERSON_NAME	Maryann Martone
SEG_DESC	manual segmentation using Xvoxtrace; surfaced with Synu using Nuage algorithm; tarfile contains all synu objects listed; the

Segmentation -	
	associated Viewdata file required by Synu for viewing; and Xvoxtrace file (pccor10mm.trace) used to contour the objects.
SEG_FILE_NAME	pccor10/pccor10_seg.tar
SURFACE_AREA	.64558 um2
THUMBNAIL	P1119/pccor10_st.jpg
TRACE_FILE	pccor10/mm.trace
VOLUME	.033640464 um3
SEGMENTED_OBJECT_ID	58
ANALYZE_DESC	SA and Vol measurements from Analyze
ANALYZE_DESC	SA and Vol measurements from Analyze
DOWNLOADABLE_FILE_DESC	Tar file containing original trace file (MM.trace) with manual contours produced with Xvoxtrace and the surface renderings of the dendritic shaft (shaft.synu) and the individual dendritic spines (sp*.synu) in Synu format, along with the Viewdata file required for viewing with Synuview.
IS_MANUAL	Y
NUMBER_OF_OBJECT	1
OBJECT_DESC	dendritic spine
OBJECT_NAME	sp51.synu
OBJECT_TYPE	surface
SEGMENTED_OBJ_2D_IMAGE	pccor10/pccor10.jpg
SEGMENTED_OBJECT_ID	58
SEGMENT_PERSON_NAME	Maryann Martone
SEG_DESC	manual segmentation using Xvoxtrace; surfaced with Synu using Nuage algorithm; tarfile contains all synu objects listed; the associated Viewdata file required by Synu for viewing; and Xvoxtrace file (pccor10mm.trace) used to contour the objects.
SEG_FILE_NAME	pccor10/pccor10_seg.tar
SURFACE_AREA	.352196 um2
THUMBNAIL	P1119/pccor10_st.jpg
TRACE_FILE	pccor10/mm.trace
VOLUME	.014816568 um3
SEGMENTED_OBJECT_ID	60
ANALYZE_DESC	SA and Vol measurements from Analyze
ANALYZE_DESC	SA and Vol measurements from Analyze
DOWNLOADABLE_FILE_DESC	Tar file containing original trace file (MM.trace) with manual contours produced with Xvoxtrace and the surface renderings of the dendritic shaft (shaft.synu) and the individual dendritic spines (sp*.synu) in Synu format, along with the Viewdata file required for viewing with Synuview.
IS_MANUAL	Y
NUMBER_OF_OBJECT	1
OBJECT_DESC	dendritic spine
OBJECT_NAME	sp53.synu
OBJECT_TYPE	surface
SEGMENTED_OBJ_2D_IMAGE	pccor10/pccor10.jpg

Segmentation -

SEGMENTED_OBJECT_ID	60
SEGMENT_PERSON_NAME	Maryann Martone
SEG_DESC	manual segmentation using Xvoxtrace; surfaced with Synu using Nuage algorithm; tarfile contains all synu objects listed; the associated Viewdata file required by Synu for viewing; and Xvoxtrace file (pccor10mm.trace) used to contour the objects.
SEG_FILE_NAME	pccor10/pccor10_seg.tar
SURFACE_AREA	.680732 um2
THUMBNAIL	P1119/pccor10_st.jpg
TRACE_FILE	pccor10/mm.trace
VOLUME	.04815824 um3
SEGMENTED_OBJECT_ID	66
ANALYZE_DESC	SA and Vol measurements from Analyze
ANALYZE_DESC	SA and Vol measurements from Analyze
DOWNLOADABLE_FILE_DESC	Tar file containing original trace file (MM.trace) with manual contours produced with Xvoxtrace and the surface renderings of the dendritic shaft (shaft.synu) and the individual dendritic spines (sp*.synu) in Synu format, along with the Viewdata file required for viewing with Synuview.
IS_MANUAL	Y
NUMBER_OF_OBJECT	1
OBJECT_DESC	dendritic spine
OBJECT_NAME	sp6.synu
OBJECT_TYPE	surface
SEGMENTED_OBJ_2D_IMAGE	pccor10/pccor10.jpg
SEGMENTED_OBJECT_ID	66
SEGMENT_PERSON_NAME	Maryann Martone
SEG_DESC	manual segmentation using Xvoxtrace; surfaced with Synu using Nuage algorithm; tarfile contains all synu objects listed; the associated Viewdata file required by Synu for viewing; and Xvoxtrace file (pccor10mm.trace) used to contour the objects.
SEG_FILE_NAME	pccor10/pccor10_seg.tar
SURFACE_AREA	.726024 um2
THUMBNAIL	P1119/pccor10_st.jpg
TRACE_FILE	pccor10/mm.trace
VOLUME	.026645216 um3
SEGMENTED_OBJECT_ID	72
ANALYZE_DESC	SA and Vol measurements from Analyze
ANALYZE_DESC	SA and Vol measurements from Analyze
DOWNLOADABLE_FILE_DESC	Tar file containing original trace file (MM.trace) with manual contours produced with Xvoxtrace and the surface renderings of the dendritic shaft (shaft.synu) and the individual dendritic spines (sp*.synu) in Synu format, along with the Viewdata file required for viewing with Synuview.
IS_MANUAL	Y
NUMBER_OF_OBJECT	1

Segmentation -

OBJECT_DESC	dendritic spine
OBJECT_NAME	sp7.synu
OBJECT_TYPE	surface
SEGMENTED_OBJ_2D_IMAGE	pccor10/pccor10.jpg
SEGMENTED_OBJECT_ID	72
SEGMENT_PERSON_NAME	Maryann Martone
SEG_DESC	manual segmentation using Xvoxtrace; surfaced with Synu using Nuage algorithm; tarfile contains all synu objects listed; the associated Viewdata file required by Synu for viewing; and Xvoxtrace file (pccor10mm.trace) used to contour the objects.
SEG_FILE_NAME	pccor10/pccor10_seg.tar
SURFACE_AREA	.472524 um2
THUMBNAIL	P1119/pccor10_st.jpg
TRACE_FILE	pccor10/mm.trace
VOLUME	.024993072 um3
SEGMENTED_OBJECT_ID	73
ANALYZE_DESC	SA and Vol measurements from Analyze
ANALYZE_DESC	SA and Vol measurements from Analyze
DOWNLOADABLE_FILE_DESC	Tar file containing original trace file (MM.trace) with manual contours produced with Xvoxtrace and the surface renderings of the dendritic shaft (shaft.synu) and the individual dendritic spines (sp*.synu) in Synu format, along with the Viewdata file required for viewing with Synuview.
IS_MANUAL	Y
NUMBER_OF_OBJECT	1
OBJECT_DESC	dendritic spine
OBJECT_NAME	sp8.synu
OBJECT_TYPE	surface
SEGMENTED_OBJ_2D_IMAGE	pccor10/pccor10.jpg
SEGMENTED_OBJECT_ID	73
SEGMENT_PERSON_NAME	Maryann Martone
SEG_DESC	manual segmentation using Xvoxtrace; surfaced with Synu using Nuage algorithm; tarfile contains all synu objects listed; the associated Viewdata file required by Synu for viewing; and Xvoxtrace file (pccor10mm.trace) used to contour the objects.
SEG_FILE_NAME	pccor10/pccor10_seg.tar
SURFACE_AREA	.700336 um2
THUMBNAIL	P1119/pccor10_st.jpg
TRACE_FILE	pccor10/mm.trace
VOLUME	.033781072 um3
SEGMENTED_OBJECT_ID	75
ANALYZE_DESC	Length measurement from Xdend
ANALYZE_DESC	Length measurement from Xdend
DOWNLOADABLE_FILE_DESC	Tar file containing original trace file (MM.trace) with manual contours produced with Xvoxtrace and the surface renderings of the dendritic shaft (shaft.synu) and the individual dendritic spines (sp*.synu) in

Segmentation -	
	Synu format, along with the Viewdata file required for viewing with Synuvview.
IS_MANUAL	Y
LENGTH	16 um
NUMBER_OF_OBJECT	1
OBJECT_DESC	dendritic shaft
OBJECT_NAME	shaft.synu
OBJECT_TYPE	surface
SEGMENTED_OBJ_2D_IMAGE	pccor10/pccor10.jpg
SEGMENTED_OBJECT_ID	75
SEGMENT_PERSON_NAME	Maryann Martone
SEG_DESC	manual segmentation using Xvoxtrace; surfaced with Synu using Nuage algorithm; tarfile contains all synu objects listed; the associated Viewdata file required by Synu for viewing; and Xvoxtrace file (pccor10mm.trace) used to contour the objects.
SEG_FILE_NAME	pccor10/pccor10_seg.tar
THUMBNAIL	P1119/pccor10_st.jpg
TRACE_FILE	pccor10/mm.trace
SEGMENTED_OBJECT_ID	16
ANALYZE_DESC	SA and Vol measurements from Analyze
ANALYZE_DESC	SA and Vol measurements from Analyze
DOWNLOADABLE_FILE_DESC	Tar file containing original trace file (MM.trace) with manual contours produced with Xvoxtrace and the surface renderings of the dendritic shaft (shaft.synu) and the individual dendritic spines (sp*.synu) in Synu format, along with the Viewdata file required for viewing with Synuvview.
IS_MANUAL	Y
NUMBER_OF_OBJECT	1
OBJECT_DESC	dendritic spine
OBJECT_NAME	sp11.synu
OBJECT_TYPE	surface
SEGMENTED_OBJ_2D_IMAGE	pccor10/pccor10.jpg
SEGMENTED_OBJECT_ID	16
SEGMENT_PERSON_NAME	Maryann Martone
SEG_DESC	manual segmentation using Xvoxtrace; surfaced with Synu using Nuage algorithm; tarfile contains all synu objects listed; the associated Viewdata file required by Synu for viewing; and Xvoxtrace file (pccor10mm.trace) used to contour the objects.
SEG_FILE_NAME	pccor10/pccor10_seg.tar
SURFACE_AREA	.673296 um2
THUMBNAIL	P1119/pccor10_st.jpg
TRACE_FILE	pccor10/mm.trace
VOLUME	.036804144 um3
SEGMENTED_OBJECT_ID	18
ANALYZE_DESC	SA and Vol measurements from Analyze
ANALYZE_DESC	SA and Vol measurements from Analyze

Segmentation -

DOWNLOADABLE_FILE_DESC	Tar file containing original trace file (MM.trace) with manual contours produced with Xvoxtrace and the surface renderings of the dendritic shaft (shaft.synu) and the individual dendritic spines (sp*.synu) in Synu format, along with the Viewdata file required for viewing with Synuview.
IS_MANUAL	Y
NUMBER_OF_OBJECT	1
OBJECT_DESC	dendritic spine
OBJECT_NAME	sp13.synu
OBJECT_TYPE	surface
SEGMENTED_OBJ_2D_IMAGE	pccor10/pccor10.jpg
SEGMENTED_OBJECT_ID	18
SEGMENT_PERSON_NAME	Maryann Martone
SEG_DESC	manual segmentation using Xvoxtrace; surfaced with Synu using Nuage algorithm; tarfile contains all synu objects listed; the associated Viewdata file required by Synu for viewing; and Xvoxtrace file (pccor10mm.trace) used to contour the objects.
SEG_FILE_NAME	pccor10/pccor10_seg.tar
SURFACE_AREA	.626652 um2
THUMBNAIL	P1119/pccor10_st.jpg
TRACE_FILE	pccor10/mm.trace
VOLUME	.031408312 um3
SEGMENTED_OBJECT_ID	21
ANALYZE_DESC	SA and Vol measurements from Analyze
ANALYZE_DESC	SA and Vol measurements from Analyze
DOWNLOADABLE_FILE_DESC	Tar file containing original trace file (MM.trace) with manual contours produced with Xvoxtrace and the surface renderings of the dendritic shaft (shaft.synu) and the individual dendritic spines (sp*.synu) in Synu format, along with the Viewdata file required for viewing with Synuview.
IS_MANUAL	Y
NUMBER_OF_OBJECT	1
OBJECT_DESC	dendritic spine
OBJECT_NAME	sp16.synu
OBJECT_TYPE	surface
SEGMENTED_OBJ_2D_IMAGE	pccor10/a_pccor10.jpg
SEGMENTED_OBJECT_ID	21
SEGMENT_PERSON_NAME	Maryann Martone
SEG_DESC	manual segmentation using Xvoxtrace; surfaced with Synu using Nuage algorithm; tarfile contains all synu objects listed; the associated Viewdata file required by Synu for viewing; and Xvoxtrace file (pccor10mm.trace) used to contour the objects.
SEG_FILE_NAME	pccor10/pccor10_seg.tar
SURFACE_AREA	.828776 um2
THUMBNAIL	P1119/pccor10_st.jpg
TRACE_FILE	pccor10/mm.trace

Segmentation -

VOLUME	.047595808 um3
SEGMENTED_OBJECT_ID	24
ANALYZE_DESC	SA and Vol measurements from Analyze
ANALYZE_DESC	SA and Vol measurements from Analyze
DOWNLOADABLE_FILE_DESC	Tar file containing original trace file (MM.trace) with manual contours produced with Xvoxtrace and the surface renderings of the dendritic shaft (shaft.synu) and the individual dendritic spines (sp*.synu) in Synu format, along with the Viewdata file required for viewing with Synuview.
IS_MANUAL	Y
NUMBER_OF_OBJECT	1
OBJECT_DESC	dendritic spine
OBJECT_NAME	sp19.synu
OBJECT_TYPE	surface
SEGMENTED_OBJ_2D_IMAGE	pccor10/pccor10.jpg
SEGMENTED_OBJECT_ID	24
SEGMENT_PERSON_NAME	Maryann Martone
SEG_DESC	manual segmentation using Xvoxtrace; surfaced with Synu using Nuage algorithm; tarfile contains all synu objects listed; the associated Viewdata file required by Synu for viewing; and Xvoxtrace file (pccor10mm.trace) used to contour the objects.
SEG_FILE_NAME	pccor10/pccor10_seg.tar
SURFACE_AREA	.57122 um2
THUMBNAIL	P1119/pccor10_st.jpg
TRACE_FILE	pccor10/mm.trace
VOLUME	.02785796 um3
SEGMENTED_OBJECT_ID	26
ANALYZE_DESC	SA and Vol measurements from Analyze
ANALYZE_DESC	SA and Vol measurements from Analyze
DOWNLOADABLE_FILE_DESC	Tar file containing original trace file (MM.trace) with manual contours produced with Xvoxtrace and the surface renderings of the dendritic shaft (shaft.synu) and the individual dendritic spines (sp*.synu) in Synu format, along with the Viewdata file required for viewing with Synuview.
IS_MANUAL	Y
NUMBER_OF_OBJECT	1
OBJECT_DESC	dendritic spine
OBJECT_NAME	sp20xz.synu
OBJECT_TYPE	surface
SEGMENTED_OBJ_2D_IMAGE	pccor10/pccor10.jpg
SEGMENTED_OBJECT_ID	26
SEGMENT_PERSON_NAME	Maryann Martone
SEG_DESC	manual segmentation using Xvoxtrace; surfaced with Synu using Nuage algorithm; tarfile contains all synu objects listed; the associated Viewdata file required by Synu for viewing; and Xvoxtrace file (pccor10mm.trace) used to contour the objects.

Segmentation -

SEG_FILE_NAME	pccor10/pccor10_seg.tar
SURFACE_AREA	.67262 um2
THUMBNAIL	P1119/pccor10_st.jpg
TRACE_FILE	pccor10/mm.trace
VOLUME	.027893112 um3
SEGMENTED_OBJECT_ID	42
ANALYZE_DESC	SA and Vol measurements from Analyze
ANALYZE_DESC	SA and Vol measurements from Analyze
DOWNLOADABLE_FILE_DESC	Tar file containing original trace file (MM.trace) with manual contours produced with Xvoxtrace and the surface renderings of the dendritic shaft (shaft.synu) and the individual dendritic spines (sp*.synu) in Synu format, along with the Viewdata file required for viewing with Synuview.
IS_MANUAL	Y
NUMBER_OF_OBJECT	1
OBJECT_DESC	dendritic spine
OBJECT_NAME	sp36.synu
OBJECT_TYPE	surface
SEGMENTED_OBJ_2D_IMAGE	pccor10/pccor10.jpg
SEGMENTED_OBJECT_ID	42
SEGMENT_PERSON_NAME	Maryann Martone
SEG_DESC	manual segmentation using Xvoxtrace; surfaced with Synu using Nuage algorithm; tarfile contains all synu objects listed; the associated Viewdata file required by Synu for viewing; and Xvoxtrace file (pccor10mm.trace) used to contour the objects.
SEG_FILE_NAME	pccor10/pccor10_seg.tar
SURFACE_AREA	.19942 um2
THUMBNAIL	P1119/pccor10_st.jpg
TRACE_FILE	pccor10/mm.trace
VOLUME	.0052728 um3
SEGMENTED_OBJECT_ID	44
ANALYZE_DESC	SA and Vol measurements from Analyze
ANALYZE_DESC	SA and Vol measurements from Analyze
DOWNLOADABLE_FILE_DESC	Tar file containing original trace file (MM.trace) with manual contours produced with Xvoxtrace and the surface renderings of the dendritic shaft (shaft.synu) and the individual dendritic spines (sp*.synu) in Synu format, along with the Viewdata file required for viewing with Synuview.
IS_MANUAL	Y
NUMBER_OF_OBJECT	1
OBJECT_DESC	dendritic spine
OBJECT_NAME	sp38.synu
OBJECT_TYPE	surface
SEGMENTED_OBJ_2D_IMAGE	pccor10/pccor10.jpg
SEGMENTED_OBJECT_ID	44
SEGMENT_PERSON_NAME	Maryann Martone

Segmentation -

SEG_DESC	manual segmentation using Xvoxtrace; surfaced with Synu using Nuage algorithm; tarfile contains all synu objects listed; the associated Viewdata file required by Synu for viewing; and Xvoxtrace file (pccor10mm.trace) used to contour the objects.
SEG_FILE_NAME	pccor10/pccor10_seg.tar
SURFACE_AREA	.569868 um2
THUMBNAIL	P1119/pccor10_st.jpg
TRACE_FILE	pccor10/mm.trace
VOLUME	.025871872 um3
SEGMENTED_OBJECT_ID	48
ANALYZE_DESC	SA and Vol measurements from Analyze
ANALYZE_DESC	SA and Vol measurements from Analyze
DOWNLOADABLE_FILE_DESC	Tar file containing original trace file (MM.trace) with manual contours produced with Xvoxtrace and the surface renderings of the dendritic shaft (shaft.synu) and the individual dendritic spines (sp*.synu) in Synu format, along with the Viewdata file required for viewing with Synuview.
IS_MANUAL	Y
NUMBER_OF_OBJECT	1
OBJECT_DESC	dendritic spine
OBJECT_NAME	sp41.synu
OBJECT_TYPE	surface
SEGMENTED_OBJ_2D_IMAGE	pccor10/pccor10.jpg
SEGMENTED_OBJECT_ID	48
SEGMENT_PERSON_NAME	Maryann Martone
SEG_DESC	manual segmentation using Xvoxtrace; surfaced with Synu using Nuage algorithm; tarfile contains all synu objects listed; the associated Viewdata file required by Synu for viewing; and Xvoxtrace file (pccor10mm.trace) used to contour the objects.
SEG_FILE_NAME	pccor10/pccor10_seg.tar
SURFACE_AREA	.59488 um2
THUMBNAIL	P1119/pccor10_st.jpg
TRACE_FILE	pccor10/mm.trace
VOLUME	.026908856 um3
SEGMENTED_OBJECT_ID	51
ANALYZE_DESC	SA and Vol measurements from Analyze
ANALYZE_DESC	SA and Vol measurements from Analyze
DOWNLOADABLE_FILE_DESC	Tar file containing original trace file (MM.trace) with manual contours produced with Xvoxtrace and the surface renderings of the dendritic shaft (shaft.synu) and the individual dendritic spines (sp*.synu) in Synu format, along with the Viewdata file required for viewing with Synuview.
IS_MANUAL	Y
NUMBER_OF_OBJECT	1
OBJECT_DESC	dendritic spine
OBJECT_NAME	sp44.synu

Segmentation -

OBJECT_TYPE	surface
SEGMENTED_OBJ_2D_IMAGE	pccor10/pccor10.jpg
SEGMENTED_OBJECT_ID	51
SEGMENT_PERSON_NAME	Maryann Martone
SEG_DESC	manual segmentation using Xvoxtrace; surfaced with Synu using Nuage algorithm; tarfile contains all synu objects listed; the associated Viewdata file required by Synu for viewing; and Xvoxtrace file (pccor10mm.trace) used to contour the objects.
SEG_FILE_NAME	pccor10/pccor10_seg.tar
SURFACE_AREA	.923416 um2
THUMBNAIL	P1119/pccor10_st.jpg
TRACE_FILE	pccor10/mm.trace
VOLUME	.038069616 um3
SEGMENTED_OBJECT_ID	53
ANALYZE_DESC	SA and Vol measurements from Analyze
ANALYZE_DESC	SA and Vol measurements from Analyze
DOWNLOADABLE_FILE_DESC	Tar file containing original trace file (MM.trace) with manual contours produced with Xvoxtrace and the surface renderings of the dendritic shaft (shaft.synu) and the individual dendritic spines (sp*.synu) in Synu format, along with the Viewdata file required for viewing with Synuview.
IS_MANUAL	Y
NUMBER_OF_OBJECT	1
OBJECT_DESC	dendritic spine
OBJECT_NAME	sp46.synu
OBJECT_TYPE	surface
SEGMENTED_OBJ_2D_IMAGE	pccor10/pccor10.jpg
SEGMENTED_OBJECT_ID	53
SEGMENT_PERSON_NAME	Maryann Martone
SEG_DESC	manual segmentation using Xvoxtrace; surfaced with Synu using Nuage algorithm; tarfile contains all synu objects listed; the associated Viewdata file required by Synu for viewing; and Xvoxtrace file (pccor10mm.trace) used to contour the objects.
SEG_FILE_NAME	pccor10/pccor10_seg.tar
SURFACE_AREA	.73684 um2
THUMBNAIL	P1119/pccor10_st.jpg
TRACE_FILE	pccor10/mm.trace
VOLUME	.043834544 um3
SEGMENTED_OBJECT_ID	31
ANALYZE_DESC	SA and Vol measurements from Analyze
ANALYZE_DESC	SA and Vol measurements from Analyze
DOWNLOADABLE_FILE_DESC	Tar file containing original trace file (MM.trace) with manual contours produced with Xvoxtrace and the surface renderings of the dendritic shaft (shaft.synu) and the individual dendritic spines (sp*.synu) in Synu format, along with the Viewdata file required for viewing with Synuview.

Segmentation -

IS_MANUAL	Y
NUMBER_OF_OBJECT	1
OBJECT_DESC	dendritic spine/xz
OBJECT_NAME	sp25xz.synu
OBJECT_TYPE	surface
SEGMENTED_OBJ_2D_IMAGE	pccor10/pccor10.jpg
SEGMENTED_OBJECT_ID	31
SEGMENT_PERSON_NAME	Maryann Martone
SEG_DESC	manual segmentation using Xvoxtrace; surfaced with Synu using Nuage algorithm; tarfile contains all synu objects listed; the associated Viewdata file required by Synu for viewing; and Xvoxtrace file (pccor10mm.trace) used to contour the objects.
SEG_FILE_NAME	pccor10/pccor10_seg.tar
SURFACE_AREA	.60502 um2
THUMBNAIL	P1119/pccor10_st.jpg
TRACE_FILE	pccor10/mm.trace
VOLUME	.03216408 um3
SEGMENTED_OBJECT_ID	36
ANALYZE_DESC	SA and Vol measurements from Analyze
ANALYZE_DESC	SA and Vol measurements from Analyze
DOWNLOADABLE_FILE_DESC	Tar file containing original trace file (MM.trace) with manual contours produced with Xvoxtrace and the surface renderings of the dendritic shaft (shaft.synu) and the individual dendritic spines (sp*.synu) in Synu format, along with the Viewdata file required for viewing with Synuview.
IS_MANUAL	Y
NUMBER_OF_OBJECT	1
OBJECT_DESC	dendritic spine/xz
OBJECT_NAME	sp30xz.synu
OBJECT_TYPE	surface
SEGMENTED_OBJ_2D_IMAGE	pccor10/pccor10.jpg
SEGMENTED_OBJECT_ID	36
SEGMENT_PERSON_NAME	Maryann Martone
SEG_DESC	manual segmentation using Xvoxtrace; surfaced with Synu using Nuage algorithm; tarfile contains all synu objects listed; the associated Viewdata file required by Synu for viewing; and Xvoxtrace file (pccor10mm.trace) used to contour the objects.
SEG_FILE_NAME	pccor10/pccor10_seg.tar
SURFACE_AREA	.22308 um2
THUMBNAIL	P1119/pccor10_st.jpg
TRACE_FILE	pccor10/mm.trace
VOLUME	.005852808 um3
SEGMENTED_OBJECT_ID	46
ANALYZE_DESC	SA and Vol measurements from Analyze
ANALYZE_DESC	SA and Vol measurements from Analyze

Segmentation -

DOWNLOADABLE_FILE_DESC	Tar file containing original trace file (MM.trace) with manual contours produced with Xvoxtrace and the surface renderings of the dendritic shaft (shaft.synu) and the individual dendritic spines (sp*.synu) in Synu format, along with the Viewdata file required for viewing with Synuview.
IS_MANUAL	Y
NUMBER_OF_OBJECT	1
OBJECT_DESC	dendritic spine/yz
OBJECT_NAME	sp3yz.synu
OBJECT_TYPE	surface
SEGMENTED_OBJ_2D_IMAGE	pccor10/pccor10.jpg
SEGMENTED_OBJECT_ID	46
SEGMENT_PERSON_NAME	Maryann Martone
SEG_DESC	manual segmentation using Xvoxtrace; surfaced with Synu using Nuage algorithm; tarfile contains all synu objects listed; the associated Viewdata file required by Synu for viewing; and Xvoxtrace file (pccor10mm.trace) used to contour the objects.
SEG_FILE_NAME	pccor10/pccor10_seg.tar
SURFACE_AREA	1.035632 um ²
THUMBNAIL	P1119/pccor10_st.jpg
TRACE_FILE	pccor10/mm.trace
VOLUME	.045627296 um ³
SEGMENTED_OBJECT_ID	61
ANALYZE_DESC	SA and Vol measurements from Analyze
ANALYZE_DESC	SA and Vol measurements from Analyze
DOWNLOADABLE_FILE_DESC	Tar file containing original trace file (MM.trace) with manual contours produced with Xvoxtrace and the surface renderings of the dendritic shaft (shaft.synu) and the individual dendritic spines (sp*.synu) in Synu format, along with the Viewdata file required for viewing with Synuview.
IS_MANUAL	Y
NUMBER_OF_OBJECT	1
OBJECT_DESC	dendritic spine/xz
OBJECT_NAME	sp54xz.synu
OBJECT_TYPE	surface
SEGMENTED_OBJ_2D_IMAGE	pccor10/pccor10.jpg
SEGMENTED_OBJECT_ID	61
SEGMENT_PERSON_NAME	Maryann Martone
SEG_DESC	manual segmentation using Xvoxtrace; surfaced with Synu using Nuage algorithm; tarfile contains all synu objects listed; the associated Viewdata file required by Synu for viewing; and Xvoxtrace file (pccor10mm.trace) used to contour the objects.
SEG_FILE_NAME	pccor10/pccor10_seg.tar
SURFACE_AREA	1.00724 um ²
THUMBNAIL	P1119/pccor10_st.jpg
TRACE_FILE	pccor10/mm.trace

Segmentation -

VOLUME	.04956432 um3
SEGMENTED_OBJECT_ID	64
ANALYZE_DESC	SA and Vol measurements from Analyze
ANALYZE_DESC	SA and Vol measurements from Analyze
DOWNLOADABLE_FILE_DESC	Tar file containing original trace file (MM.trace) with manual contours produced with Xvoxtrace and the surface renderings of the dendritic shaft (shaft.synu) and the individual dendritic spines (sp*.synu) in Synu format, along with the Viewdata file required for viewing with Synuview.
IS_MANUAL	Y
NUMBER_OF_OBJECT	1
OBJECT_DESC	dendritic spine/xz
OBJECT_NAME	sp57xz.synu
OBJECT_TYPE	surface
SEGMENTED_OBJ_2D_IMAGE	pccor10/pccor10.jpg
SEGMENTED_OBJECT_ID	64
SEGMENT_PERSON_NAME	Maryann Martone
SEG_DESC	manual segmentation using Xvoxtrace; surfaced with Synu using Nuage algorithm; tarfile contains all synu objects listed; the associated Viewdata file required by Synu for viewing; and Xvoxtrace file (pccor10mm.trace) used to contour the objects.
SEG_FILE_NAME	pccor10/pccor10_seg.tar
SURFACE_AREA	1.036984 um2
THUMBNAIL	P1119/pccor10_st.jpg
TRACE_FILE	pccor10/mm.trace
VOLUME	.040266616 um3
SEGMENTED_OBJECT_ID	59
ANALYZE_DESC	SA and Vol measurements from Analyze
ANALYZE_DESC	SA and Vol measurements from Analyze
DOWNLOADABLE_FILE_DESC	Tar file containing original trace file (MM.trace) with manual contours produced with Xvoxtrace and the surface renderings of the dendritic shaft (shaft.synu) and the individual dendritic spines (sp*.synu) in Synu format, along with the Viewdata file required for viewing with Synuview.
IS_MANUAL	Y
NUMBER_OF_OBJECT	1
OBJECT_DESC	dendritic spine
OBJECT_NAME	sp52.synu
OBJECT_TYPE	surface
SEGMENTED_OBJ_2D_IMAGE	pccor10/pccor10.jpg
SEGMENTED_OBJECT_ID	59
SEGMENT_PERSON_NAME	Maryann Martone
SEG_DESC	manual segmentation using Xvoxtrace; surfaced with Synu using Nuage algorithm; tarfile contains all synu objects listed; the associated Viewdata file required by Synu for viewing; and Xvoxtrace file (pccor10mm.trace) used to contour the objects.

Segmentation -

SEG_FILE_NAME	pccor10/pccor10_seg.tar
SURFACE_AREA	.531336 um2
THUMBNAIL	P1119/pccor10_st.jpg
TRACE_FILE	pccor10/mm.trace
VOLUME	.036399896 um3
SEGMENTED_OBJECT_ID	68
ANALYZE_DESC	SA and Vol measurements from Analyze
ANALYZE_DESC	SA and Vol measurements from Analyze
DOWNLOADABLE_FILE_DESC	Tar file containing original trace file (MM.trace) with manual contours produced with Xvoxtrace and the surface renderings of the dendritic shaft (shaft.synu) and the individual dendritic spines (sp*.synu) in Synu format, along with the Viewdata file required for viewing with Synuview.
IS_MANUAL	Y
NUMBER_OF_OBJECT	1
OBJECT_DESC	dendritic spine
OBJECT_NAME	sp61.synu
OBJECT_TYPE	surface
SEGMENTED_OBJ_2D_IMAGE	pccor10/pccor10.jpg
SEGMENTED_OBJECT_ID	68
SEGMENT_PERSON_NAME	Maryann Martone
SEG_DESC	manual segmentation using Xvoxtrace; surfaced with Synu using Nuage algorithm; tarfile contains all synu objects listed; the associated Viewdata file required by Synu for viewing; and Xvoxtrace file (pccor10mm.trace) used to contour the objects.
SEG_FILE_NAME	pccor10/pccor10_seg.tar
SURFACE_AREA	.15548 um2
THUMBNAIL	P1119/pccor10_st.jpg
TRACE_FILE	pccor10/mm.trace
VOLUME	.00474552 um3
SEGMENTED_OBJECT_ID	74
ANALYZE_DESC	SA and Vol measurements from Analyze
ANALYZE_DESC	SA and Vol measurements from Analyze
DOWNLOADABLE_FILE_DESC	Tar file containing original trace file (MM.trace) with manual contours produced with Xvoxtrace and the surface renderings of the dendritic shaft (shaft.synu) and the individual dendritic spines (sp*.synu) in Synu format, along with the Viewdata file required for viewing with Synuview.
IS_MANUAL	Y
NUMBER_OF_OBJECT	1
OBJECT_DESC	dendritic spine
OBJECT_NAME	sp9.synu
OBJECT_TYPE	surface
SEGMENTED_OBJ_2D_IMAGE	pccor10/pccor10.jpg
SEGMENTED_OBJECT_ID	74
SEGMENT_PERSON_NAME	Maryann Martone

Segmentation -

SEG_DESC	manual segmentation using Xvoxtrace; surfaced with Synu using Nuage algorithm; tarfile contains all synu objects listed; the associated Viewdata file required by Synu for viewing; and Xvoxtrace file (pccor10mm.trace) used to contour the objects.
SEG_FILE_NAME	pccor10/pccor10_seg.tar
SURFACE_AREA	.933556 um2
THUMBNAIL	P1119/pccor10_st.jpg
TRACE_FILE	pccor10/mm.trace
VOLUME	.03919448 um3
SEGMENTED_OBJECT_ID	27
ANALYZE_DESC	SA and Vol measurements from Analyze
ANALYZE_DESC	SA and Vol measurements from Analyze
DOWNLOADABLE_FILE_DESC	Tar file containing original trace file (MM.trace) with manual contours produced with Xvoxtrace and the surface renderings of the dendritic shaft (shaft.synu) and the individual dendritic spines (sp*.synu) in Synu format, along with the Viewdata file required for viewing with Synuview.
IS_MANUAL	Y
NUMBER_OF_OBJECT	1
OBJECT_DESC	dendritic spine/xz
OBJECT_NAME	sp21xz.synu
OBJECT_TYPE	surface
SEGMENTED_OBJ_2D_IMAGE	pccor10/pccor10.jpg
SEGMENTED_OBJECT_ID	27
SEGMENT_PERSON_NAME	Maryann Martone
SEG_DESC	manual segmentation using Xvoxtrace; surfaced with Synu using Nuage algorithm; tarfile contains all synu objects listed; the associated Viewdata file required by Synu for viewing; and Xvoxtrace file (pccor10mm.trace) used to contour the objects.
SEG_FILE_NAME	pccor10/pccor10_seg.tar
SURFACE_AREA	.331916 um2
THUMBNAIL	P1119/pccor10_st.jpg
TRACE_FILE	pccor10/mm.trace
VOLUME	.01116076 um3

USER AGREEMENT

Data Sharing and Citation Policy: The mission of the CCDB is to promote data sharing among scientists interested in cellular and subcellular anatomy and in developing computer algorithms for 3D reconstruction and modeling of such data. Data sets may be viewed or shared at the discretion of the author of the data. In some cases, the data may be freely viewed and downloaded without contacting the original author while in other cases, permission of the author may have to be obtained prior to downloading the data. In either case, failure to cite or give proper credit to the original authors who collected these data in subsequent published articles or presentations is a material breach of this User Agreement. CCDB requires all researchers re-analyzing these published data via the CCDB access to reference the original published article and the CCDB. An example of an appropriate acknowledgement is provided on the CCDB web site. CCDB is not in a position to police every intended use of these data. The scientific community will self-police the compliance of this contractual obligation.

DISCLAIMER

THE DATA PROVIDED BY THE CCDB ARE FREELY DISTRIBUTED AND WITHOUT CHARGE. THESE DATA ARE PROVIDED BY THE CCDB "AS IS" AND WITHOUT ANY EXPRESS OR IMPLIED WARRANTIES, INCLUDING, BUT NOT LIMITED TO, THE IMPLIED WARRANTIES OF MERCHANTABILITY, FITNESS FOR A PARTICULAR PURPOSE, OR NON-INFRINGEMENT, TO ANY THIRD PARTY RIGHTS. IN NO EVENT SHALL THE CCDB BE LIABLE FOR ANY DIRECT, INDIRECT, INCIDENTAL, SPECIAL, EXEMPLARY, OR CONSEQUENTIAL DAMAGES (INCLUDING, BUT NOT LIMITED TO, PROCUREMENT OF SUBSTITUTE GOODS OR SERVICES; LOSS OF USE, DATA, OR PROFITS; OR BUSINESS INTERRUPTION) HOWEVER CAUSED AND ON ANY THEORY OF LIABILITY, WHETHER IN CONTRACT, STRICT LIABILITY, OR TORT (INCLUDING NEGLIGENCE OR OTHERWISE) ARISING IN ANY WAY OUT OF THE USE OF THESE DATA, EVEN IF ADVISED OF THE POSSIBILITY OF SUCH DAMAGE.

USER NOTIFICATION

For large size image data, it will take several minutes to download, please be patient. Thanks!

ACKNOWLEDGEMENT

Data used from the CCDB should be appropriately referenced, including both the author of the data and the CCDB. If the data were from a published study, the reference is included in the database record. The following reference should be cited for the CCDB:

Martone, M. E., Gupta, A., Wong, M., Qian, X., Sosinsky, G., Ludaescher, B., and Ellisman, M. H. A cell centered database for electron tomographic data. J. Struct. Biology 138: 145-155, 2002.

In addition, the support for the Cell Centered Database should be included in the acknowledgement section of any publication: The Cell Centered Database is supported by NIH grants from NCRR RR04050, RR RR08605 and the Human Brain Project DA016602 from the National Institute on Drug Abuse, the National Institute of Biomedical Imaging and Bioengineering and the National Institute of Mental Health, and NSF grants supporting the National Partnership for Advanced Computational Infrastructure NSF-ASC 97-5249 and MCB-9728338.

Maryann Martone