

January 7th, 1929.

Mr. W. O. Boettiger, Manager
Santa Fe Irrigation District
Rancho Santa Fe, Calif.

Dear Mr. Boettiger:

I am enclosing my check for \$15.04 first installment
of taxes for Lots 4, 5, 6, 7, Block 14, Solana
Beach, Monarch Bulb & Nursery Company. Please
send me receipt.

Yours very truly,

EF:CMF
Encl.

January 21st,
1929

San Dieguito Irrigation District,
Encinitas,
California.

Attention Mr. Boettiger

My dear Mr. Boettiger:

I got a check for \$25 from Teten which was the
best I could do.

I hope the district can accept this settlement
under the circumstances as the whole thing was
an accident.

I wish you would have the pipe fixed up where the
break was and send me a bill for it and I will
send a check.

Thanking you for your interest in the matter, I am

Yours very truly,

EF:AK

P. S. If the matter had been taken up with me
personally earlier it would not have run along so.
Hereafter where there is any misunderstanding of
this kind please take it up direct with me.

E.F.

IRA E. CONNER, President
W. O. BOETTIGER, Secretary-Manager
MAITLAND BAKEWELL, Assessor and Treasurer
WM. A. BECHBERGER, Tax Collector
Consulting Engineer
J. B. LIPPINCOTT

Telephone, Del Mar 86-F-11

BOARD OF DIRECTORS

IRA E. CONNER
BOWLY LE HURAY
C. A. SHAFFER

Santa Fe Irrigation District

Rancho Santa Fe, San Diego County
California

January 24, 1929.

Colonel Ed Fletcher,
1020 9th St.,
San Diego, Cal.

Dear Colonel Fletcher:

We wish to thank you for the \$25.00 check from Teten enclosed with your letter of January 21st. In view of the circumstances, we will accept this payment in full settlement of the water bill which resulted from break in pipe line. We will make necessary repairs to the pipe as soon as possible.

In calling this matter to your attention some time ago we advised you that Joe Zarn who originally made the deposit for meter serving these premises, requested that service be discontinued and meter deposit was refunded to him. The Mexican tenant now occupying the house is therefore without water. We have found it preferable that the owner of the property arrange for meters and make the deposit therefor for the reason that tenants are always coming and going. We will therefore appreciate having you make the deposit now required for this meter in the amount of \$14.00 in order that service to this tenant might be resumed. Application is herewith enclosed for signature.

Hoping that we may have your cooperation in this matter, we are

Yours very truly,

W. O. Boettiger
Sec'y-Manager.

WOB:B
Enc.

*Fain passing the
application over to
Gonzales who lives
on the place
E. E. B.*

January 26th,
1 9 2 9

Mr. W. P. Boettiger,
Santa Fe Irrigation District,
Rancho Santa Fe, California.

My dear Mr. Boettiger:

The Mexican is not asking for water at the present
time and I don't like to stand responsible for it.

Please fix the pipe line and send me a bill, and
greatly oblige. I will send you a check.

Yours very truly,

EF:AK

February 1st, 1929.

Attention Mr. W. O. Boettiger, Secy-Manager.

Santa Fe Irrigation District
Rancho Santa Fe, California.

Dear Mr. Boettiger:

Answering yours of the 24th, this matter is
entirely up to Mr. Gonzales, who can make application
for water or not as he sees fit.

I thank you for your cooperation in this matter.

Yours very truly,

EF:GMF

SANTA FE IRRIGATION DISTRICT
May 4, 1929

TO ALL WATER CONSUMERS:

This District has tests made at regular intervals of the water received from Lake Hodges. While these tests have varied somewhat from time to time, they have until now always shown the water to be suitable for domestic purposes. Nevertheless, your Directors have for some time been considering the advisability of chlorinating the water in order to absolutely insure its continued potability, but as this would necessitate the establishment of four chlorination plants (because our water is delivered to us at four points) and as it would be necessary to chlorinate all water that is used for irrigation as well as domestic purposes, no definite decision had been reached up to the present, although complete plans and estimates are on hand.

The latest tests of the water have shown that at the present time it is not potable as received from Lake Hodges. While it is hopeful that this condition is only temporary, it is advisable, until further notice, to boil all drinking water.

Meanwhile the necessary steps are being taken for the earliest possible installation of a chlorination system in order that water will be rendered suitable for domestic use.

W. O. BOETTIGER, Sec'y-Manager.

May Seventh,
1929

Mr. W. O. Boettiger, Sec'y-Mgr.,
Santa Fe Irrigation District,
Rancho Santa Fe, Calif.

Dear Mr. Boettiger:

Congratulations on the letter you wrote the water consumers of your district. It certainly is fine.

Sincerely yours,

AK

May Twenty-seventh,
1 9 2 9

Mr. W. O. Boettiger,
Rancho Santa Fe,
California.

Dear Mr. Boettiger:

Mr. Nakamura is short of water and he has his crop
in. By all means, go the limit to see that he gets
his full supply as he needs it.

Yours truly,

EF:AK

C. A. SHAFFER, PRESIDENT
W. O. BOETTIGER, SECRETARY-MANAGER
M. BAKEWELL, ASSESSOR-TREASURER
WM. A. BECHBERGER, TAX COLLECTOR

TELEPHONE
RANCHO SANTA FE 2651

BOARD OF DIRECTORS
C. A. SHAFFER
BOWLY LE MURAY
IRA E. CONNER

SANTA FE IRRIGATION DISTRICT
RANCHO SANTA FE, SAN DIEGO COUNTY,
CALIFORNIA

May 29, 1929.

Col. Ed Fletcher,
1020 9th St.,
San Diego, Calif.

Dear Col. Fletcher:

Practically all of Mr. Nakamura's plantings are served from our "B" Reservoir to which, as you will recall, the entire distribution system serving Marine View Gardens has been connected. This condition was the subject of a report which we made to you in July, 1928 and in which report we recommended, in view of the demand for pressure service, certain improvements at an estimated cost of about \$6,000. The situation was explained to you rather carefully and in your letter to us of August 4, 1928, you stated that it was your desire "That we be supplied with water from "B" Reservoir which should take care of our requirements for a long time to come". If you will review this correspondence, I believe it will give you a clearer understanding of the situation as it now exists.

In the meantime, we are doing everything possible with the present facilities to supply Nakamura and other consumers from "B" Reservoir with the amount of water required.

Yours very truly,

SANTA FE IRRIGATION DISTRICT

W. O. Boettiger
Secretary-Manager.

WOB:B

September Twenty-fifth,
1 9 2 9

Mr. W. O. Boettiger,
Rancho Santa Fe,
California.

Dear Mr. Boettiger:

Will you please give me a list of the names of those who live in Rancho San a Fe who can afford to give something to the Community Chest?

I want their names and initials. I want to write them a personal letter.

Please treat this confidentially but I would appreciate your kindness in the matter.

Sincerely yours,

EF:AK

September 25th, 1929.

Santa Fe Irrigation District
Rancho Santa Fe, California.

Attention Mr. Boettiger!

My dear Mr. Boettiger!

Answering your inquiry of the 24th will say that as you know it is a matter of record with your District that the pipe line extending from Lockwood Mesa reservoir along Nardo Avenue is a private line for use of domestic supply alone and no irrigation water can be put thru it. The pipe line is limited in capacity.

It is only a matter of time when the property in Blocks 1 and 3 will be sold and houses built.

If we let one irrigate, we will have to let them all and we must protect our pressure for our domestic service.

I am sure you appreciate our position.

Sincerely yours,

EF:GMF

Rancho Santa Fe, Calif.
October 2nd, 1929.

Mr. Ed Fletcher,
1024 Ninth Street,
San Diego, Calif.

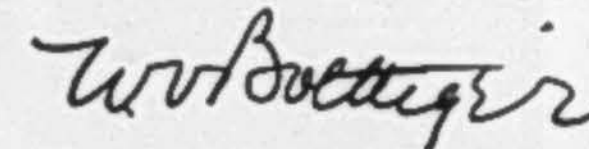
Dear Colonel Fletcher:

Herewith list of most of the residents of Rancho Santa Fe. For the most part they are retired business men who have orchards and homes. Others included in the list are local business men, contractors, etc.

It is quite a long list, but if you feel you have the time to write each one a personal letter it certainly would nicely pave the way for me. I feel sure our efforts here will be successful and that the returns will exceed last year's amount.

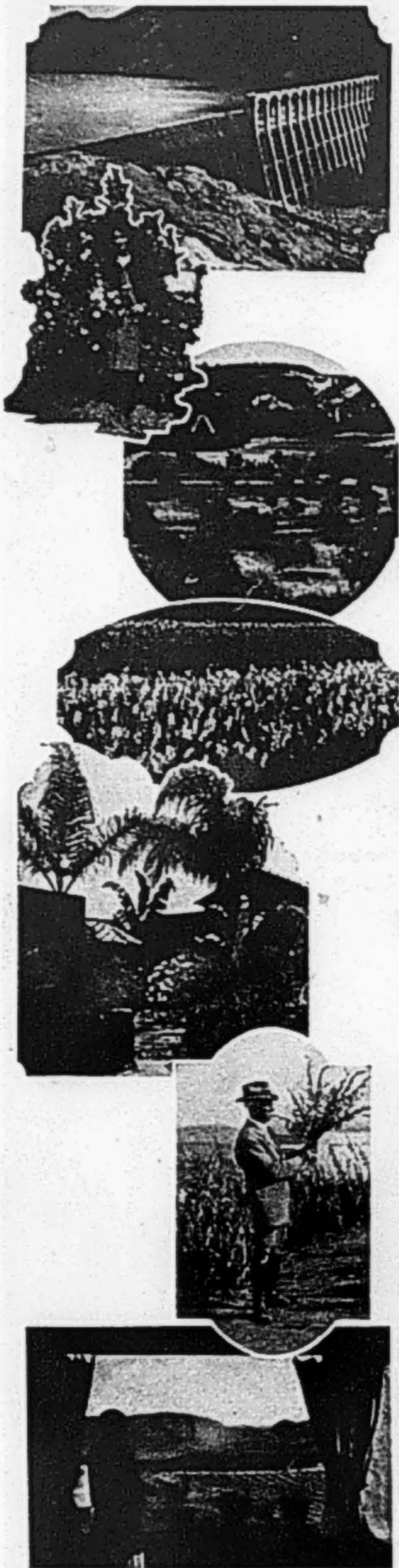
I am expecting the necessary forms and supplies from headquarters within the next day or two.

Yours very truly,

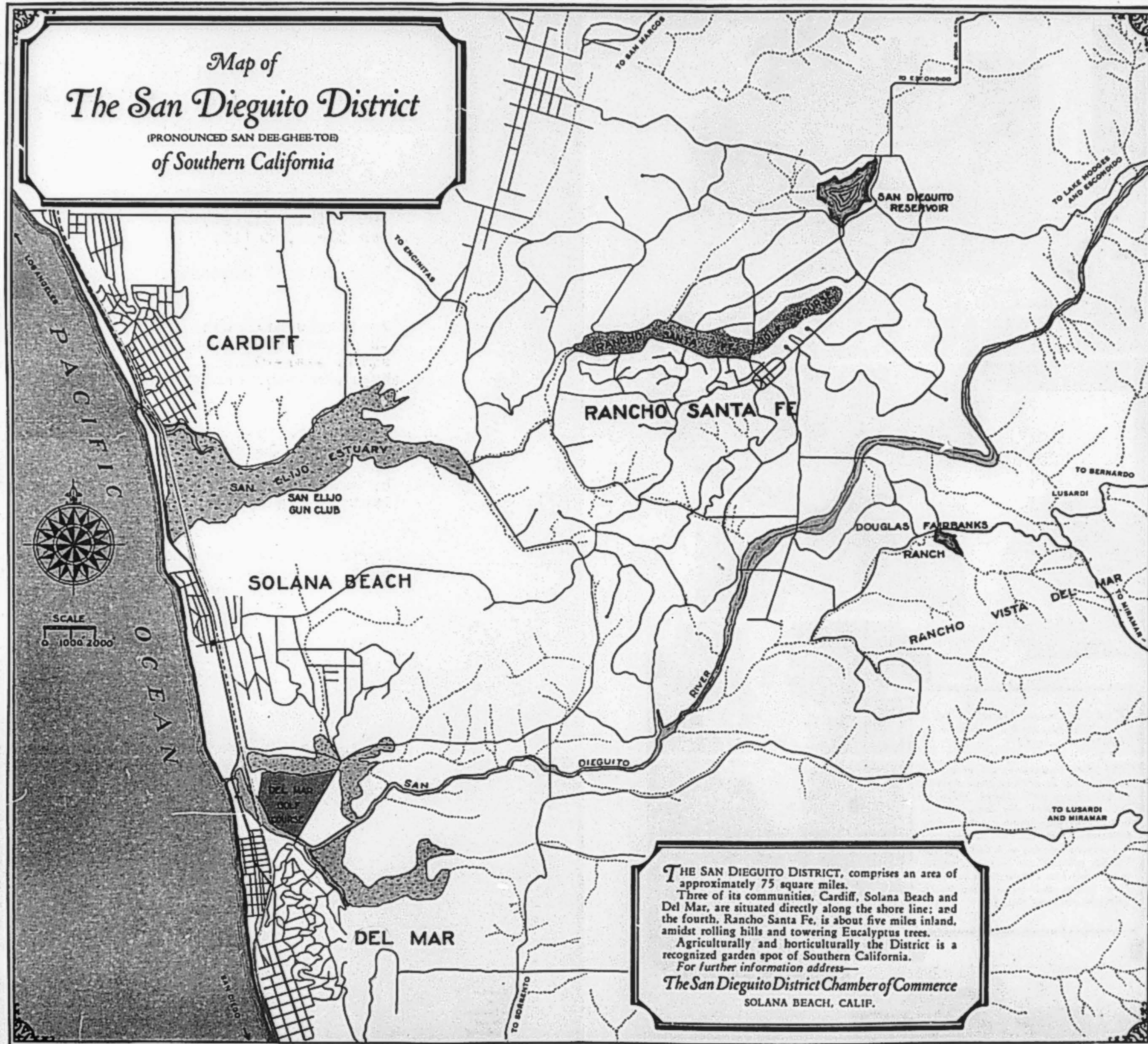


W. O. Boettiger

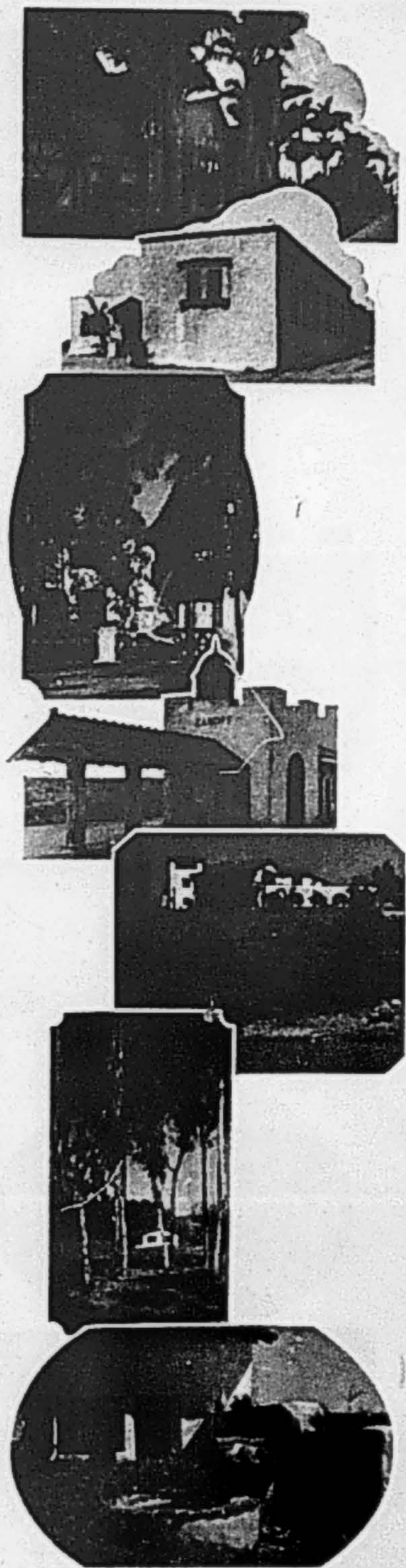
P. S. How do you like our new Chamber of Commerce four-page letterhead idea?



AN abundance of water, rich soil and the equable climate assure profitable growth of orchards, groves and gardens.

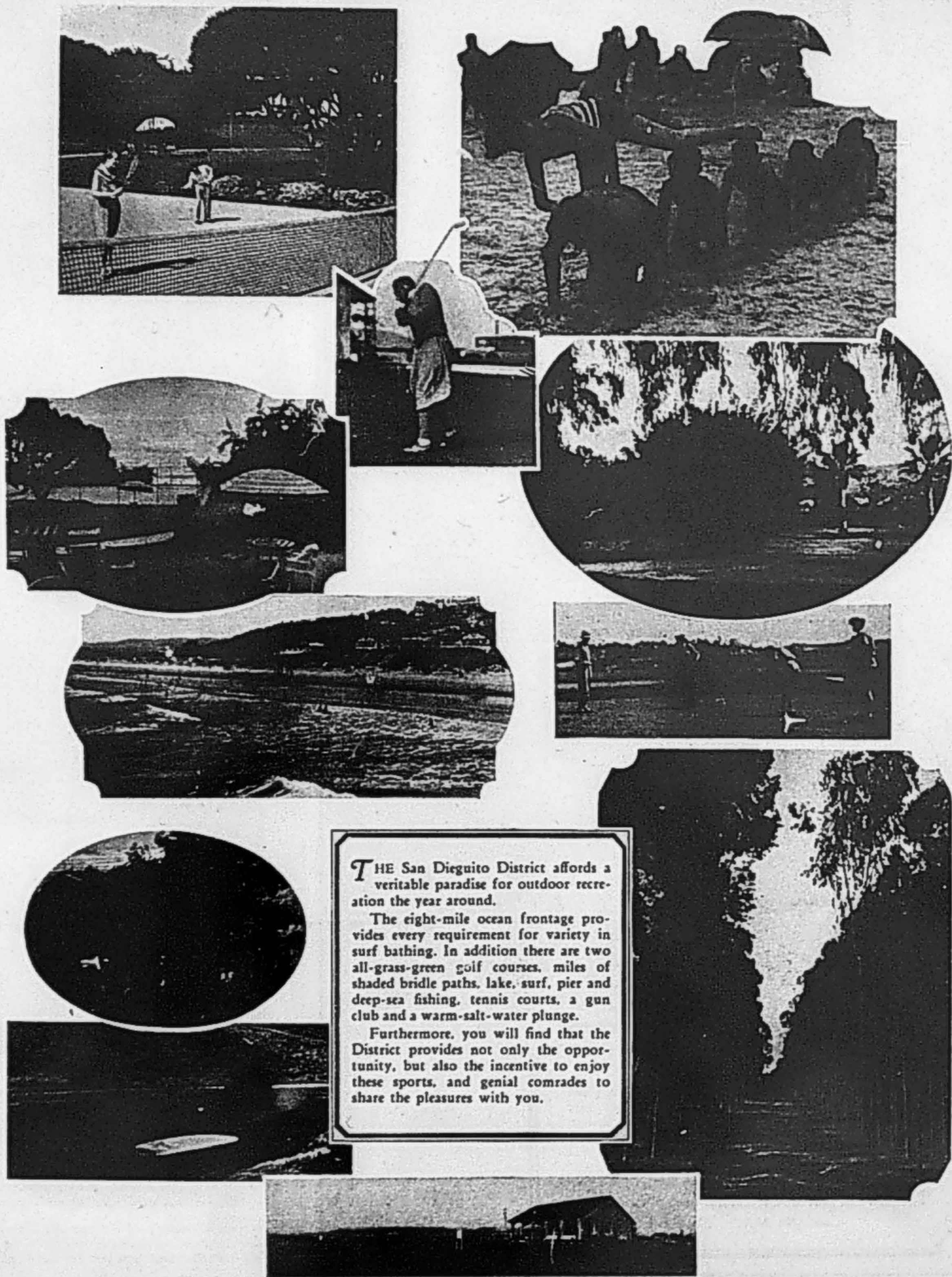


THE SAN DIEGUITO DISTRICT, comprises an area of approximately 75 square miles. Three of its communities, Cardiff, Solana Beach and Del Mar, are situated directly along the shore line; and the fourth, Rancho Santa Fe, is about five miles inland, amidst rolling hills and towering Eucalyptus trees. Agriculturally and horticulturally the District is a recognized garden spot of Southern California. For further information address—
The San Dieguito District Chamber of Commerce
 SOLANA BEACH, CALIF.



THE subtle beauty of the District is reflected in the architectural charm of its hotels, schools, and business institutions.

Ocean breezes from the Pacific, sparkling water, pure air and a benign sun, are but a few of the heritages which nature has provided for those who live in the San Dieguito District.



THE San Dieguito District affords a veritable paradise for outdoor recreation the year around.

The eight-mile ocean frontage provides every requirement for variety in surf bathing. In addition there are two all-grass-green golf courses, miles of shaded bridle paths, lake, surf, pier and deep-sea fishing, tennis courts, a gun club and a warm-salt-water plunge.

Furthermore, you will find that the District provides not only the opportunity, but also the incentive to enjoy these sports, and genial comrades to share the pleasures with you.

LIST OF RESIDENTS - RANCHO SANTA FE

- R. E. Badger
- W. H. Ballard
- W. A. Bechberger
- B. C. Beers
- Ellis Bishop
- C. H. Bristol
- T. L. Carothers
- H. Carpenter
- G. A. C. Christiancy
- R. B. Claggett
- J. B. Cushman
- C. E. Ellis
- A. W. Gilbert
- G. S. Harris
- F. W. Joers
- H. E. Ketchum
- L. L. Fox
- H. G. Larrick
- Bowly Le Huray
- Shaw Lovett
- Ronald Macdonald
- R. G. Mann
- W. L. McCulloch
- R. McKenna
- Russell H. Millar
- Berton Millard
- Glenn A. Moore
- R. E. Morgan
- S. R. Nelson
- H. J. Parker
- Miss Frances L. Parsons
- C. F. Pease
- H. L. Porter
- Lilian J. Rice (Miss)
- D. M. Richards
- C. A. Sheffer
- W. A. Smart
- J. C. Smillie
- C. Everette Smith
- A. R. Sprague
- G. W. Tomlinson
- E. S. White
- H. W. Whitsitt
- E. D. Williams
- Geo. W. Megrew
- H. L. Block
- Mrs. Louise G. Spurr

Address - Rancho Santa Fe, Calif

October 5th, 1929.

Mr. W. O. Boettiger
Rancho Santa Fe, California.

Dear Mr. Boettiger:

Enclosed find copy of letter that I have written each person as per list supplied by you and in answer to your letter of October 2nd. Please get right after it.

Yours very truly,

WOB:GMF
Encl.

C. A. SHAFFER, PRESIDENT
W. O. BOETTIGER, SECRETARY-MANAGER
M. BAKERWELL, ASSESSOR-TREASURER
WM. A. BECHBERGEN, TAX COLLECTOR

TELEPHONE
RANCHO SANTA FE 2651

BOARD OF DIRECTORS
C. A. SHAFFER
BOWLY LE HURAY
IRA E. CONNER

SANTA FE IRRIGATION DISTRICT

RANCHO SANTA FE, SAN DIEGO COUNTY,
CALIFORNIA

December 12, 1930

Colonel Ed Fletcher,
1020 9th St.,
San Diego, Calif.

FILE: F-3.

Dear Colonel Fletcher:

Confirming our telephone conversation of today regarding water costs in the Santa Fe Irrigation District, the following is a tabulation of our expenses for the year 1929 and estimated expenses for the year 1930, these expenses being partly met by water tolls and partly by annual assessments:

	1929	1930
Cost of Water Purchased	\$ 65,891.86	\$ 74,000.00
O. & M. & Adm. Expense	51,758.71	50,000.00
Bond Interest	42,000.00	42,000.00
Amortization Bond Interest	1,914.70	1,914.70
TOTAL	\$139,565.27	\$147,914.70
Less Misc. Income	1,603.50	1,500.00
NET TOTAL	\$137,961.77	\$146,414.70

The water consumption, ^{in million gals.} for the year 1929 and the water consumption for the year 1930 up to date, with the estimated water use included for the month of December, follows:

	1929	1930
Irrigation	741	786
Domestic	61	48
TOTAL	802	834

These figures indicate an average cost of water to land owners in the District of 17.2¢ per 1,000 gallons in 1929 and 17.6¢ per 1,000 gallons in 1930. This is equivalent to 12.9¢ per 100 cu. ft. and 13.2¢ per 100 cu. ft. respectively for the years 1929 and 1930.

These costs as you know are rather high in view of the fact that the District pays for a considerable amount of water not used, in accordance with the terms of its contract with the City of San Diego. If all the water purchased was being used, the average cost of water to property owners in the District would be about 10¢ per 1,000 gallons or 7½¢ per 100 cu. ft.

Yours very truly,

W. O. Boettiger

Secretary-Manager.

WOB:b

C
O
P
Y

SANTA FE IRRIGATION DISTRICT
Rancho Santa Fe, San Diego County,
California

December 12, 1930

Colonel Ed Fletcher,
1020 9th St.,
San Diego, Calif.

Dear Colonel Fletcher:

Confirming our telephone conversation today, regarding water costs in the Santa Fe Irrigation District, the following is a tabulation of our expenses for the year 1929 and estimated expenses for the year 1930, these expenses being partly met by water tolls and partly by annual assessments:

	<u>1929</u>	<u>1930</u>
Cost of Water Purchased	\$63,891.85	\$74,000.00
O. & M. Adm. Expense	31,758.71	50,000.00
Bond Interest	42,000.00	42,000.00
Amortization Bond Interest	<u>1,914.70</u>	<u>1,914.70</u>
TOTAL	\$139,565.27	\$147,914.70
Less Misc. Income	<u>1,603.50</u>	<u>1,500.00</u>
NET TOTAL	\$137,961.77	\$146,414.70

The water consumption in million gals. for the year 1929 and the water consumption for the year 1930 up to date, with the estimated water use included for the month of December follows:

	<u>1929</u>	<u>1930</u>
Irrigation	741	786
Domestic	<u>61</u>	<u>48</u>
TOTAL	802	834

These figures indicate an average cost of water to land owners in the District of 17.2¢ per 1,000 gallons in 1929 and 17.6¢ per 1,000 gallons in 1930. This is equivalent to 12.9¢ per 100 cu. ft. and 13.2¢ per 100 cu. ft. respectively for the years 1929 and 1930.

These costs as you know are rather high in view of the fact that the District pays for a considerable amount of water not used, in accordance with the terms of its contract with the City of San Diego. If all the water purchased was being used, the average cost of water to property owners in the District would be about 10¢ per 1,000 gallons or 7½¢ per 100 cu. ft.

Yours very truly,

(signed) W. O. Boettiger, Secretary-Manager.

G. A. SHAFFER, PRESIDENT
W. O. BOETTIGER, SECRETARY-MANAGER
H. BAKWELL, ASSESSOR-TREASURER
WM. A. BECHBERGER, TAX COLLECTOR

TELEPHONE
RANCHO SANTA FE, 2651

BOARD OF DIRECTORS
G. A. SHAFFER
BOWLY LE HURAY
IRA E. CONNER

SANTA FE IRRIGATION DISTRICT
RANCHO SANTA FE, SAN DIEGO COUNTY,
CALIFORNIA

December 22, 1930.

FILE: F-3.

Colonel Ed Fletcher,
1020 9th St.,
San Diego, Calif.

Dear Colonel Fletcher:

Replying to your letter of December 18th, the following figures show annual payments for water made to the City of San Diego for contract years ending October 31, 1929 and October 31, 1930, the cost of water used and the annual water deficits:

Contract Year Ending October 31, 1929

Min. Payment to City of San Diego,	\$61,382.26
Water Used,	<u>35,227.06</u>
Water Deficit,	\$26,155.20

Contract Year Ending October 31, 1930.

Min. Payment to City of San Diego,	\$73,658.72
Water Used,	<u>35,493.93</u>
Water Deficit,	\$38,164.79

Yours very truly,

W. O. Boettiger
Secretary-Manager.

WOB:B

9.

P
Y
SANTA FE IRRIGATION DISTRICT

Rancho Santa Fe, Calif.

December 22, 1930;

FILE; P-3

Colonel Ed Fletcher,
1020 9th St.,
San Diego, Calif.

Dear Colonel Fletcher:

Replying to your letter of December 18th, the following figures show annual payments for water made to the city of San Diego for contract years ending October 31, 1929 and October 31, 1930, the cost of water used and the annual water deficits:

Contract Year Ending October 31, 1929

Minn. payment to City of San Diego	\$61,382.28
Water used,	<u>53,227.06</u>
Water Deficit	\$28,155.20

Contract Year Ending October 31, 1930

Minn. Payment to City of San Diego,	\$73,658.72
Water used,	<u>55,495.95</u>
Water Deficit,	\$38,164.79

Yours very truly,

W. O. BOETTIGER
Secretary-Manager.

WOB:B

IRA E. CONNER, PRESIDENT
W. O. BOETTIGER, SECRETARY-MANAGER
WM. A. BECHBERGER [ASSESSOR
TREASURER
COLLECTOR

TELEPHONE
RANCHO SANTA FE 2651

BOARD OF DIRECTORS
IRA E. CONNER
C. A. SHAFFER
RAYMOND ZIESMER

SANTA FE IRRIGATION DISTRICT

RANCHO SANTA FE, SAN DIEGO COUNTY,
CALIFORNIA

July 17, 1931.

Colonel Ed Fletcher,
1020 9th St.,
San Diego, Calif.

Dear Colonel Fletcher:

Replying to yours of July 13th I wish to advise that our water year is from November 1st to November 1st and, inasmuch as we make semi-annual settlements, we can not at this time give you the figures for this year of the amount of water bought and paid for and not used. During the year 1930, however, we bought and paid for water in the amount of \$38,650.40 which we could not sell or use.

Hoping this gives you the information desired, I am

Yours very truly,
W. O. Boettiger
Secretary-Manager.

WOB:B

Ed Fletcher Papers

1870-1955

MSS.81

Box: 2 Folder: 22

General Correspondence - Boettiger, W.O.



Copyright: UC Regents

Use: This work is available from the UC San Diego Libraries. This digital copy of the work is intended to support research, teaching, and private study.

Constraints: This work is protected by the U.S. Copyright Law (Title 17, U.S.C.). Use of this work beyond that allowed by "fair use" requires written permission of the UC Regents. Permission may be obtained from the UC San Diego Libraries department having custody of the work (<http://libraries.ucsd.edu/collections/mscl/>). Responsibility for obtaining permissions and any use and distribution of this work rests exclusively with the user and not the UC San Diego Libraries.