

*Report and Index of
Underway Marine geophysical Data*

Vancouver Expedition

Leg 10

(VANC10MV)

R/V Melville

(Issued Jul 2003)

Ports:

Cape Town, South Africa (15-MAY-03)

to

Port Hedland, Australia (12-JUN-03)

Chief Scientist: Donna Blackman
Scripps Institution of Oceanography
dblackman@ucsd.edu

Computer Tech - Bill French
Resident Tech - Bob Wilson

Post-Cruise processing and report preparation by the
Shipboard Technical Support Group,
Scripps Institution of Oceanography
La Jolla, CA 92093-0223

Note: *This is an index of underway geophysical data edited and processed after the completion of the leg and is intended primarily for informal use within the institution. This document is not to be reproduced or distributed outside Scripps without prior approval of the chief scientist or Shipboard Technical Support, Scripps Institution of Oceanography, La Jolla, California 92093-0223*

STS Cruise ID#299

Report and index of Navigation and Underway Geophysical Data

Contents:

Index Chart - give track of cruise leg, dates, ports.

Track Charts - annotated with dates and hour ticks.

Profiles - depth, magnetic and gravity free air anomaly vs. distance. (Sections of track with seismic reflection data have a wide black line along the bottom of the profile.)

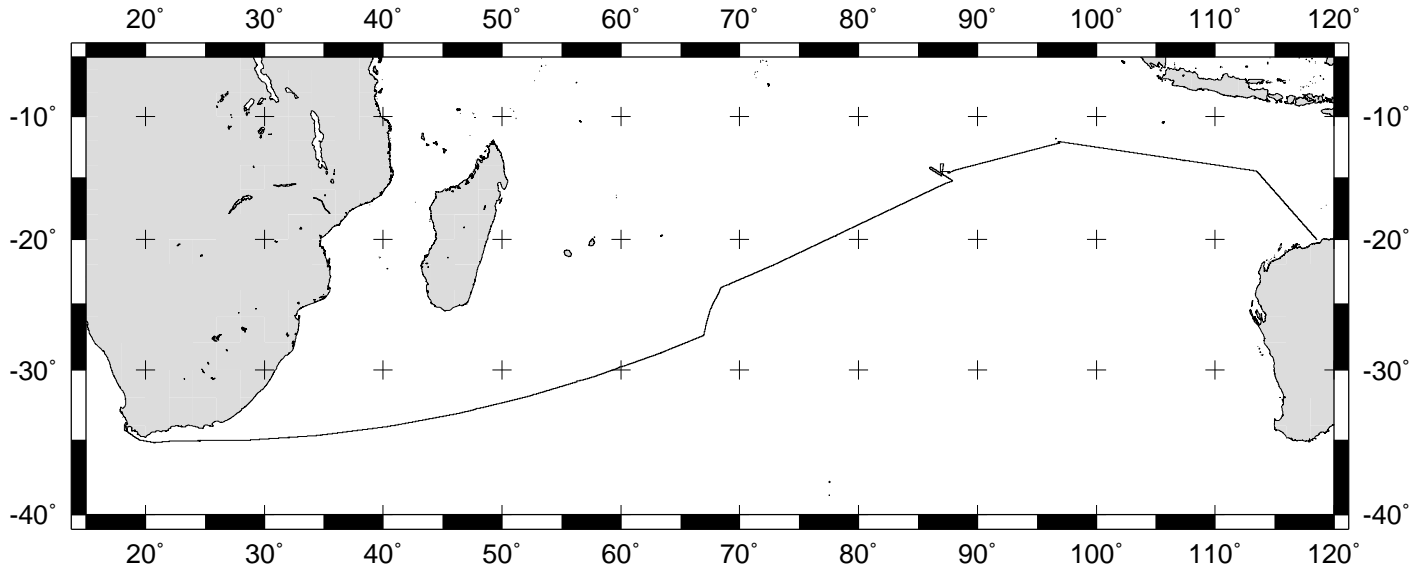
Sample Index - list of begin/end times and positions of all underway records as well as samples and measurements from other disciplines collected on the leg.

Note:

For information on the availability of this current digital data as well as archived digital data contact:

Stephen P. Miller
Geological Data Center
Scripps Institution of Oceanography
La Jolla, California 92093-0220
Phone: (858) 534-1898
Internet email: spmiller@ucsd.edu; or his website: <http://SIOExplorer@ucsd.edu>

Rev 05/2002



VANCOUVER EXPEDITION LEG 10 (VANC10MV)

=====

CHIEF SCIENTIST: Donna Blackman, Scripps Institution

PORTS: Capetown, South Africa - Port Hedland, Australia

DATES: 15 May - 12 June 2003

SHIP: R/V Melville

TOTAL MILEAGE OF UNDERWAY DATA COLLECTED

Cruise - 6463 miles

Magnetics-5145 miles

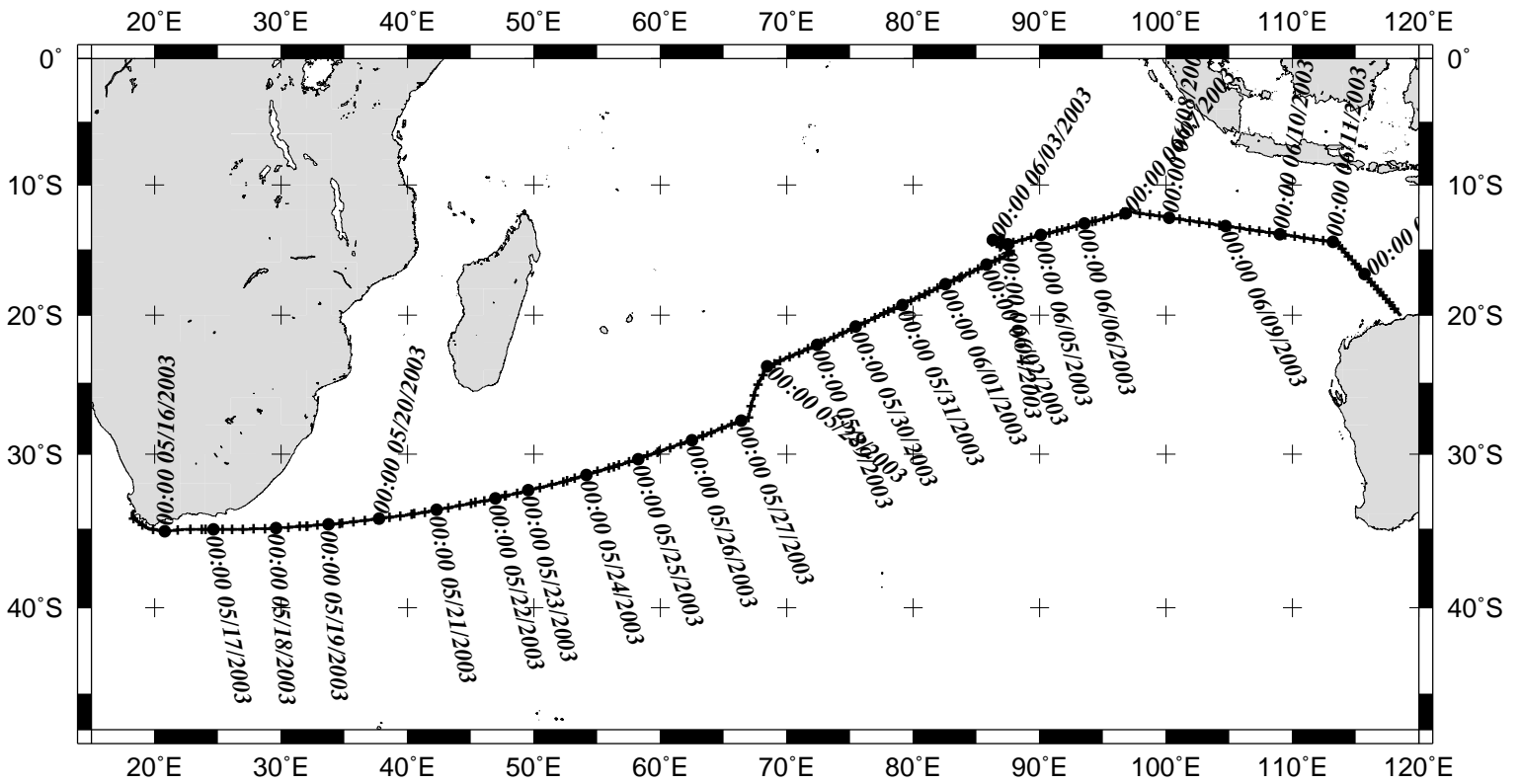
Bathymetry -5874 miles

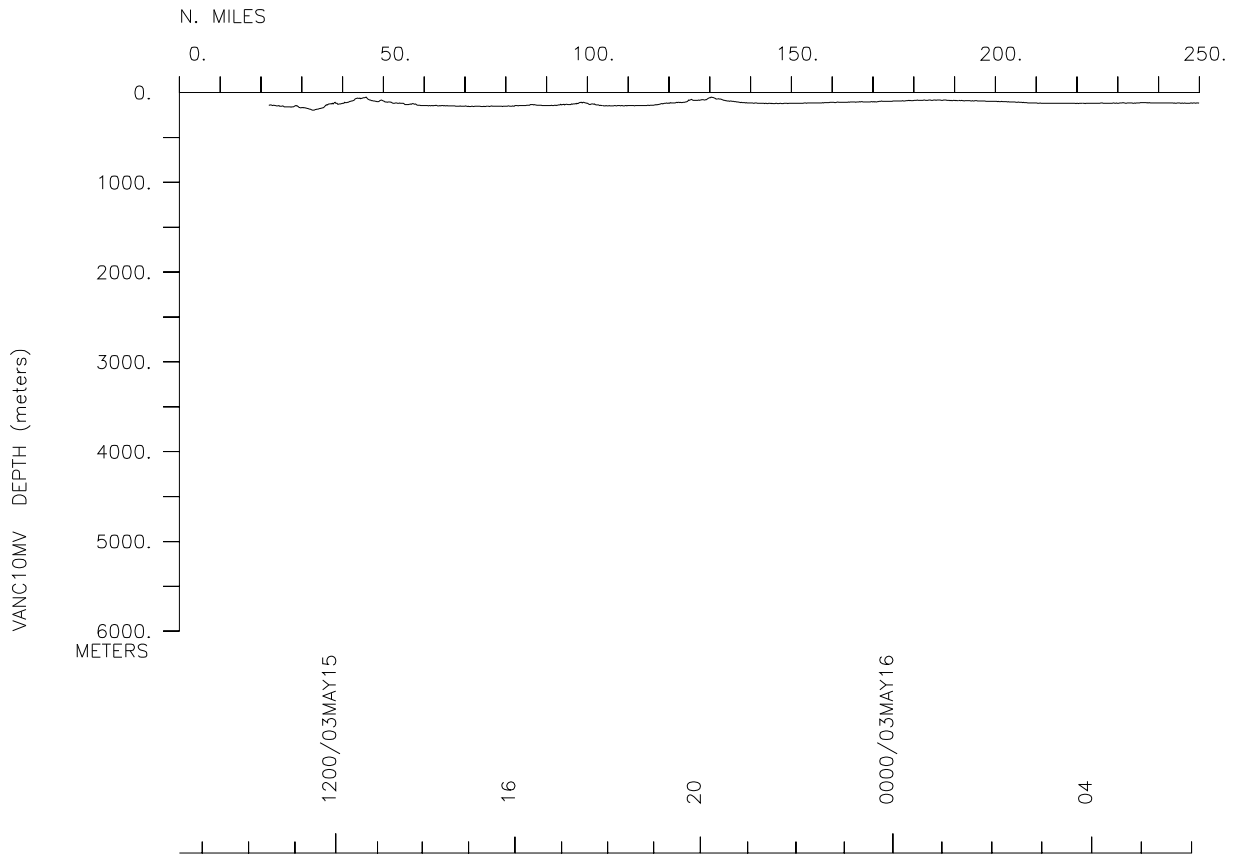
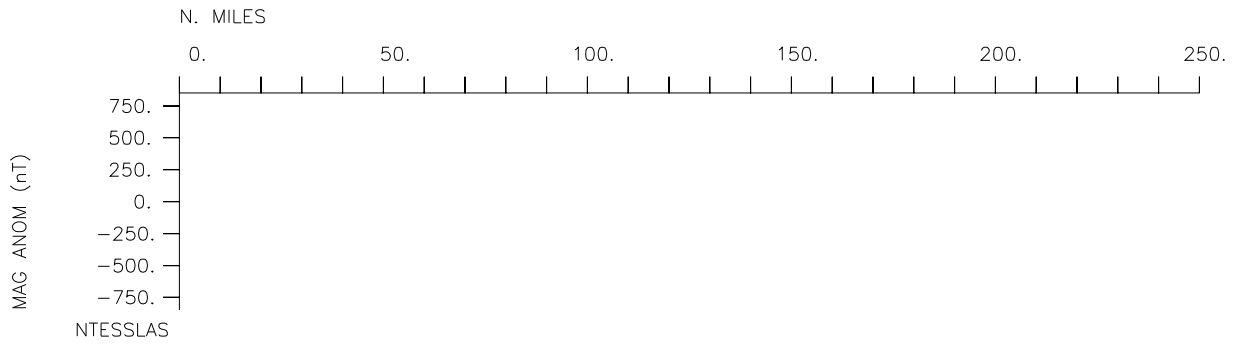
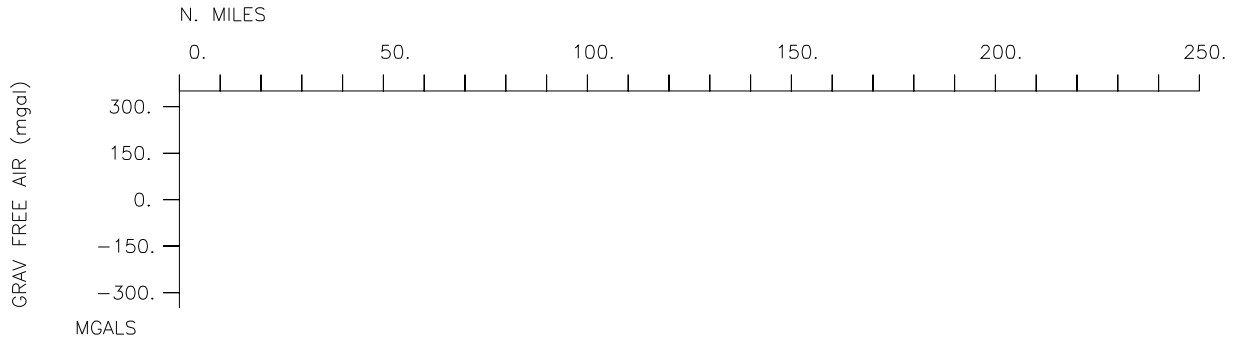
Seismic Reflection-none collected

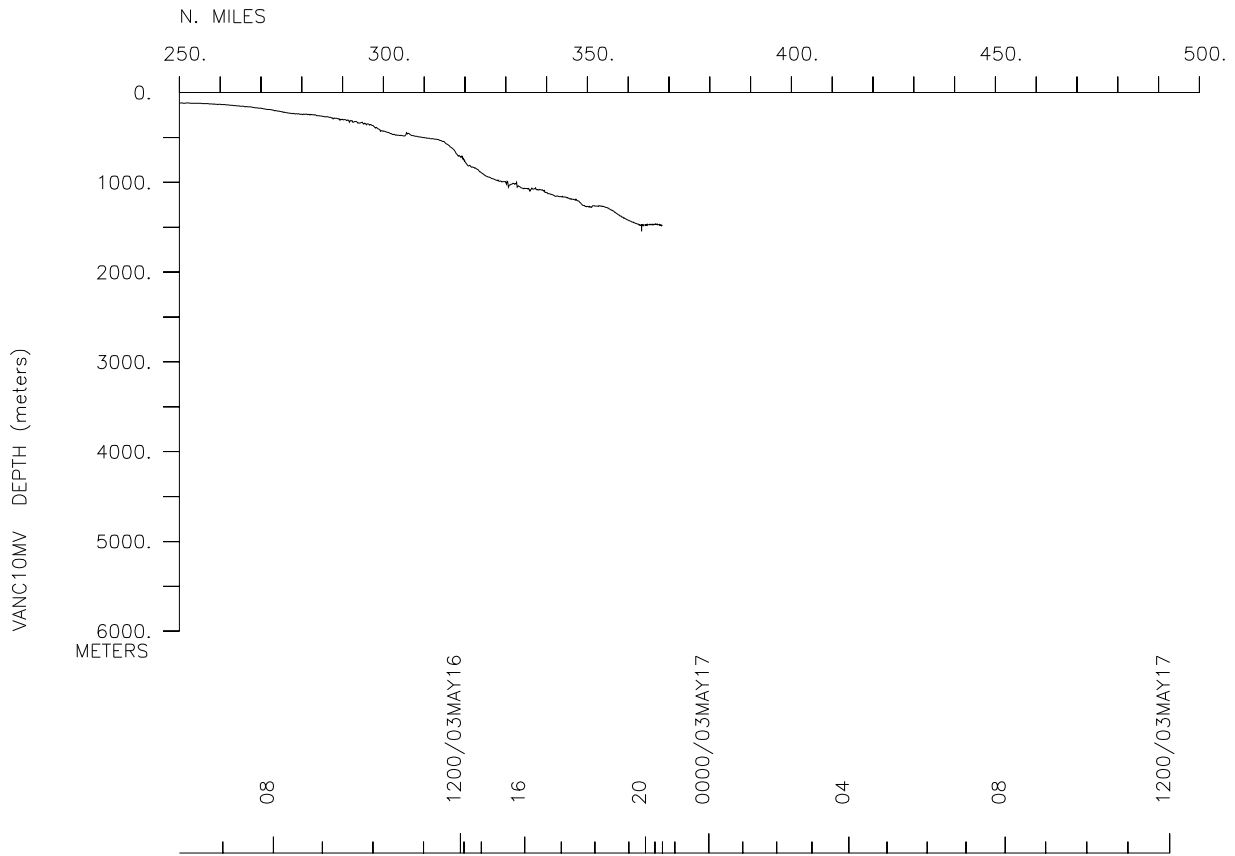
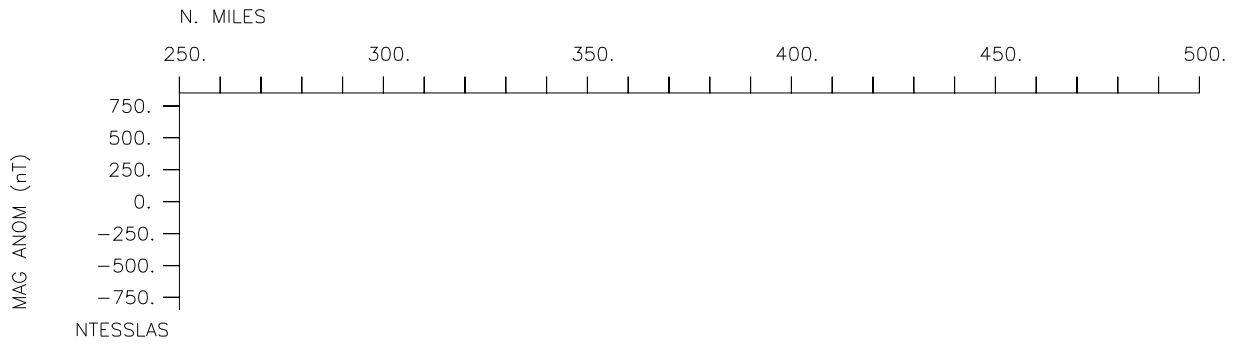
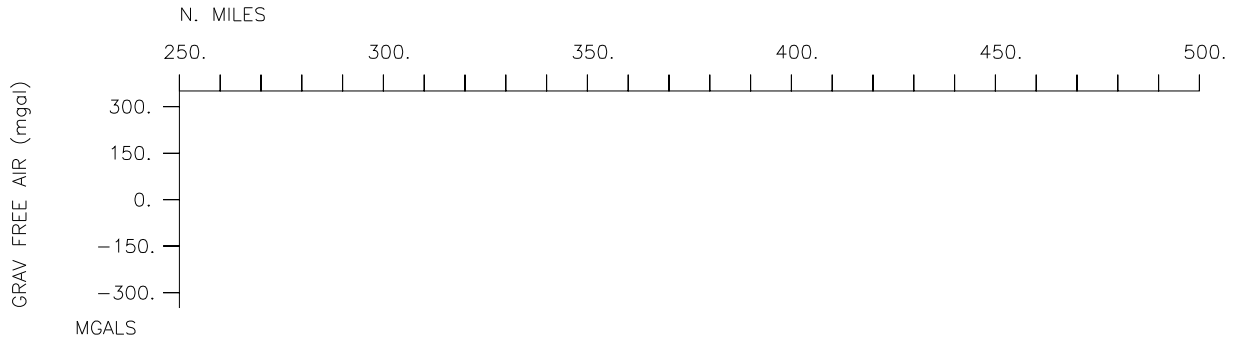
Multibeam -5874 miles

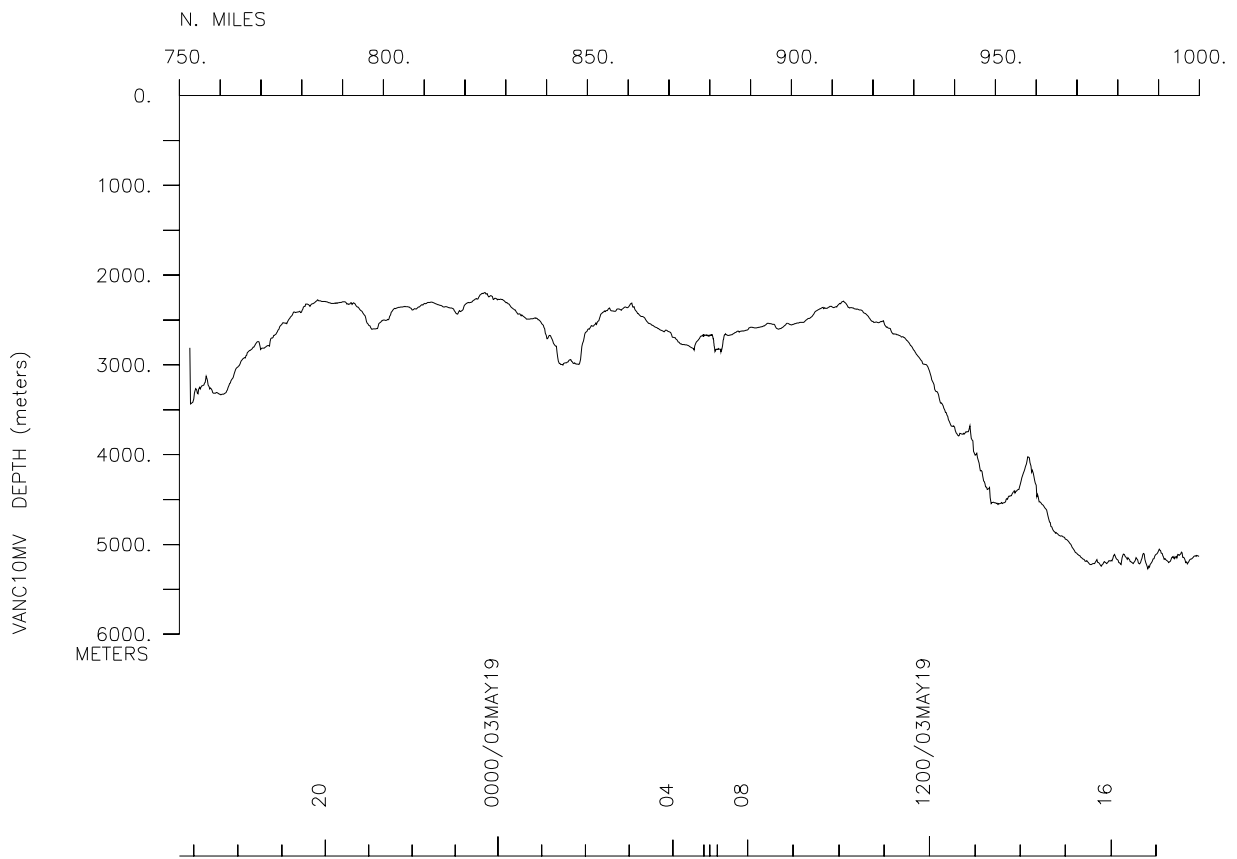
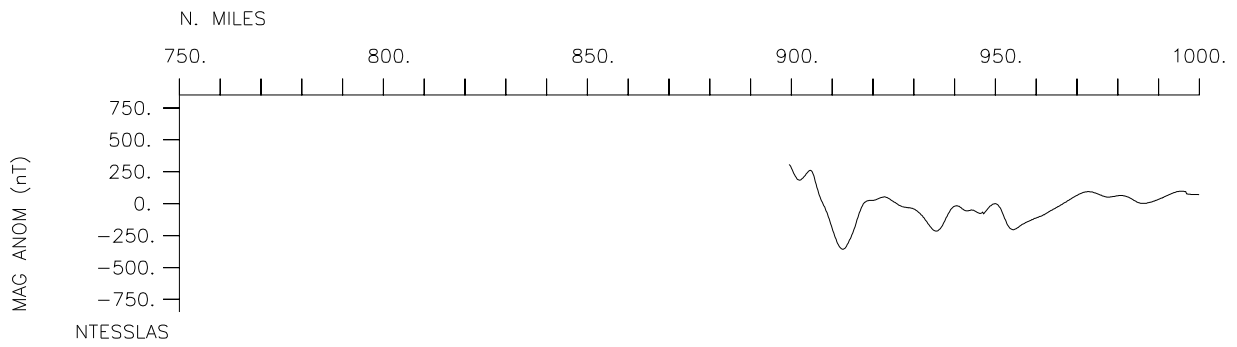
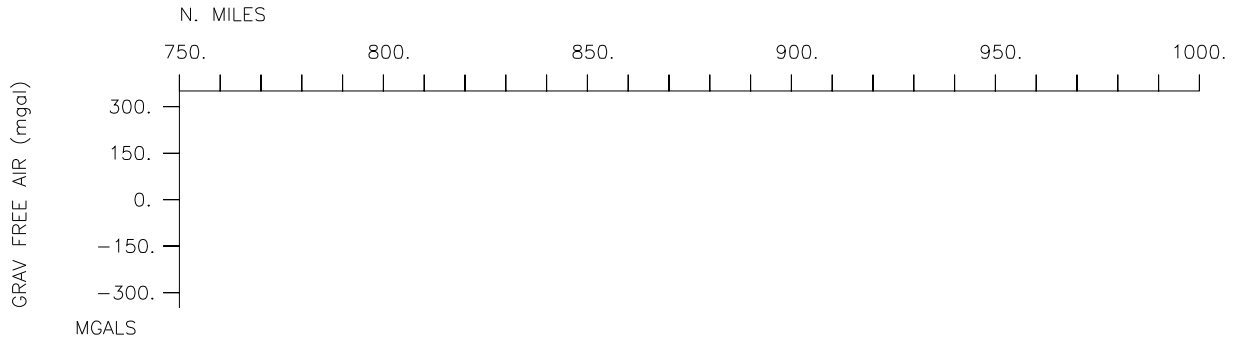
Gravity-none collected

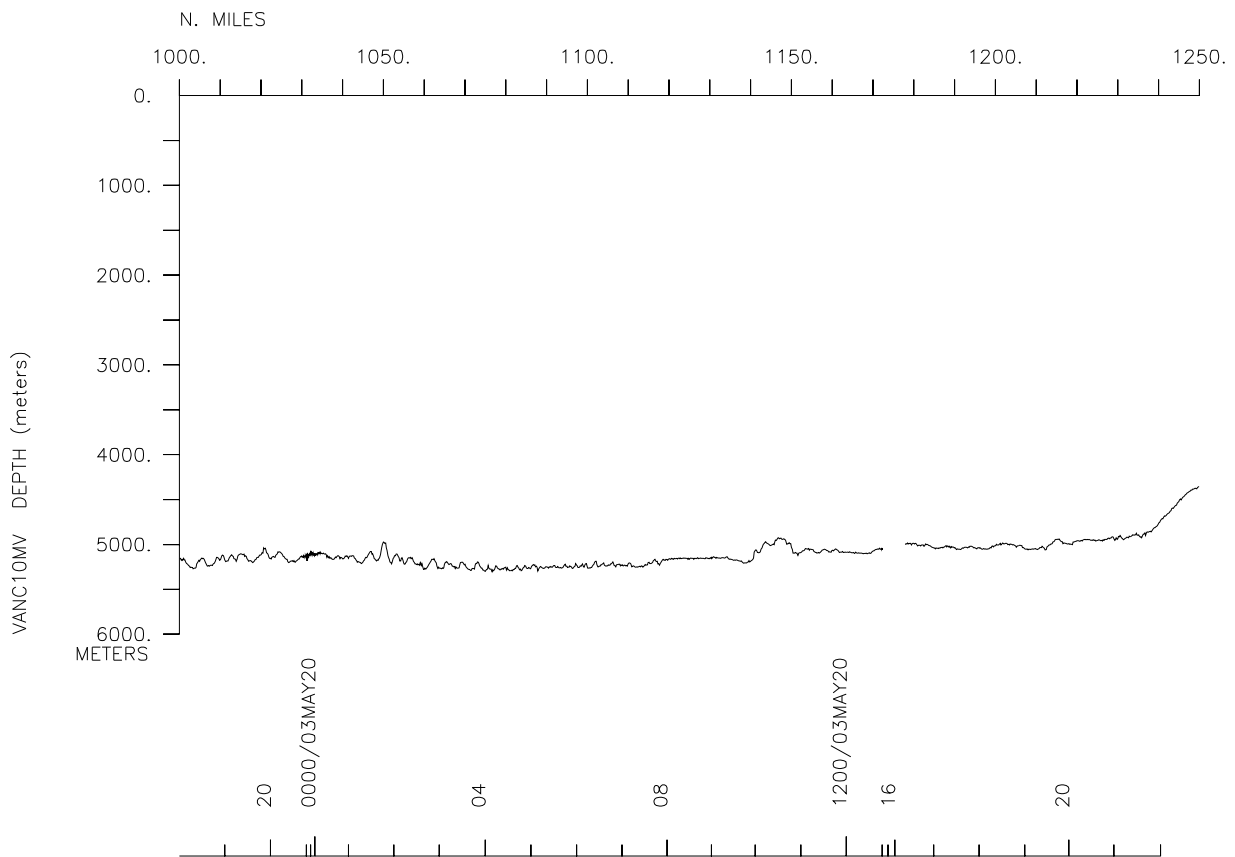
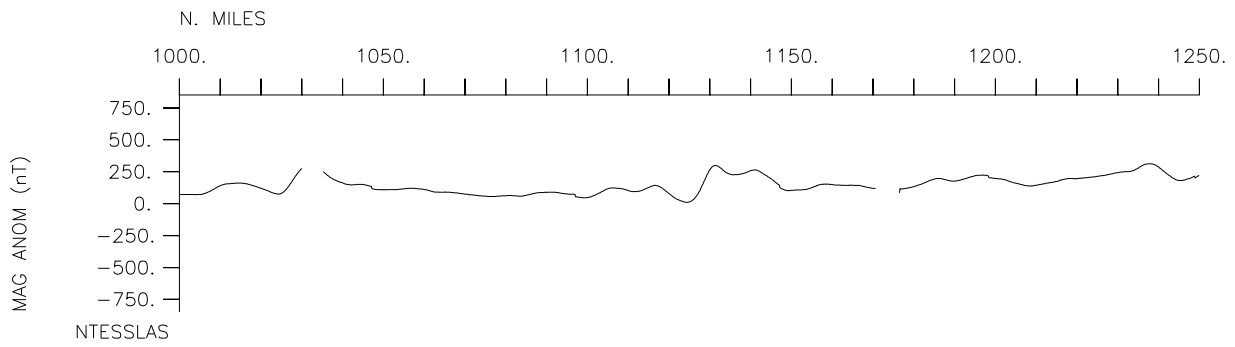
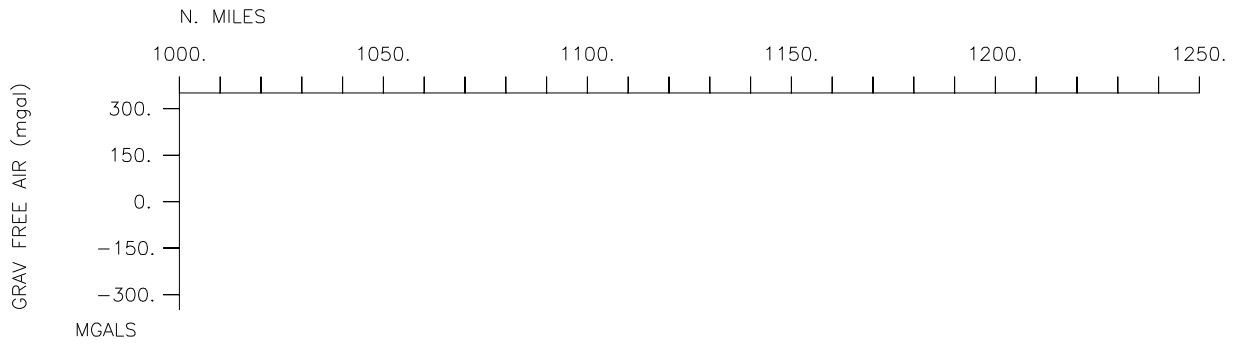
VANC10MV

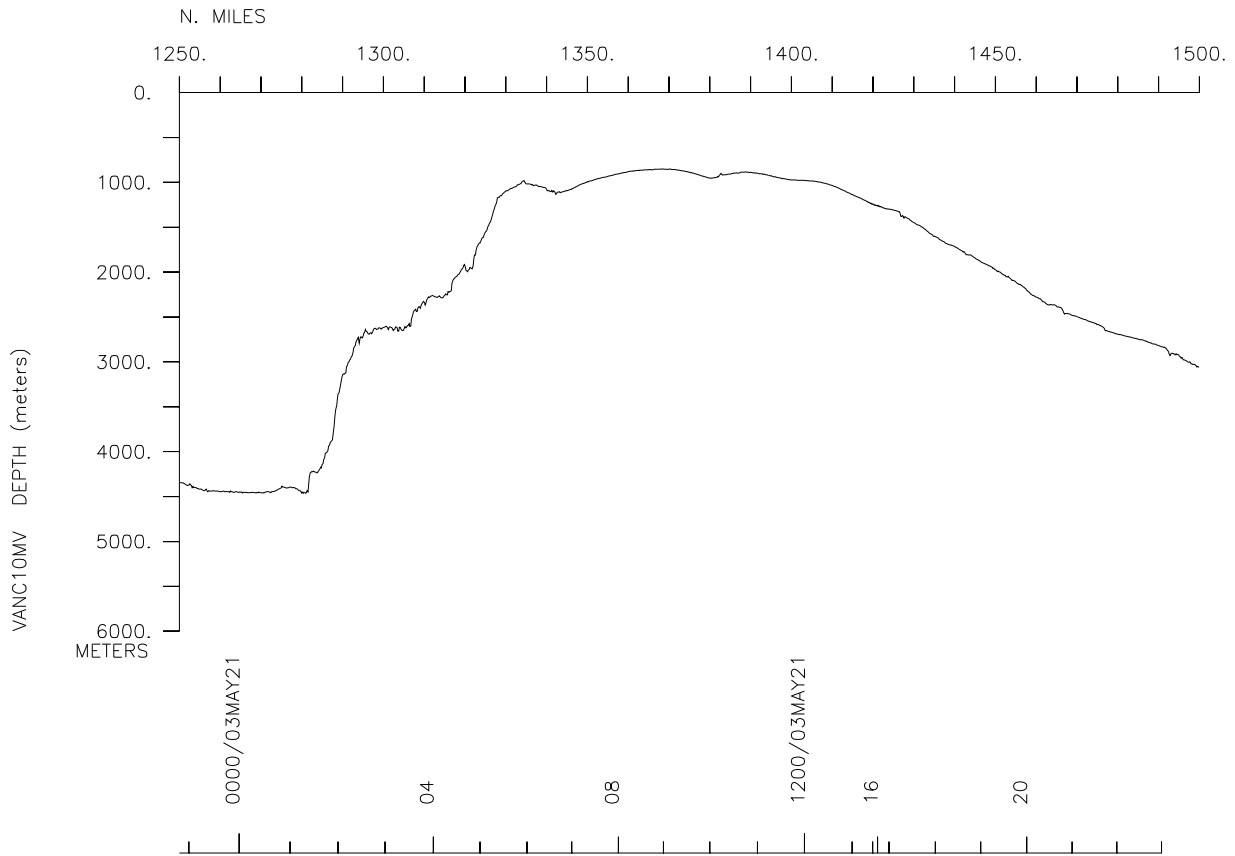
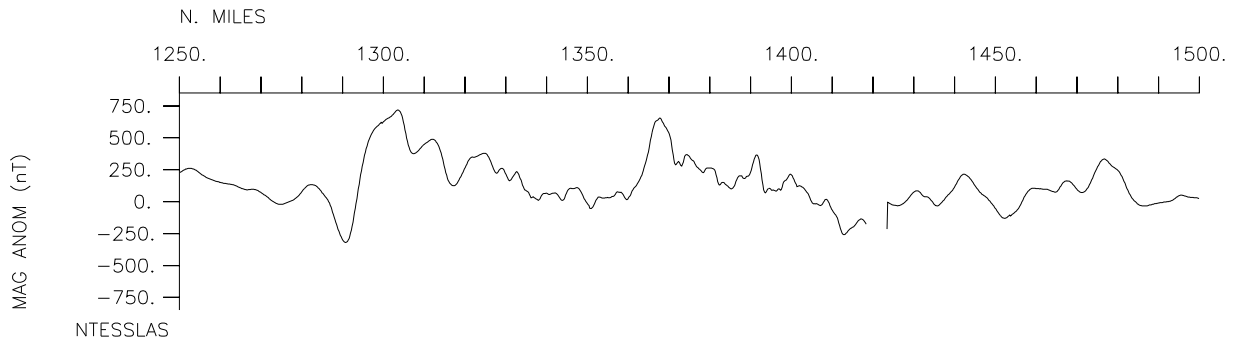
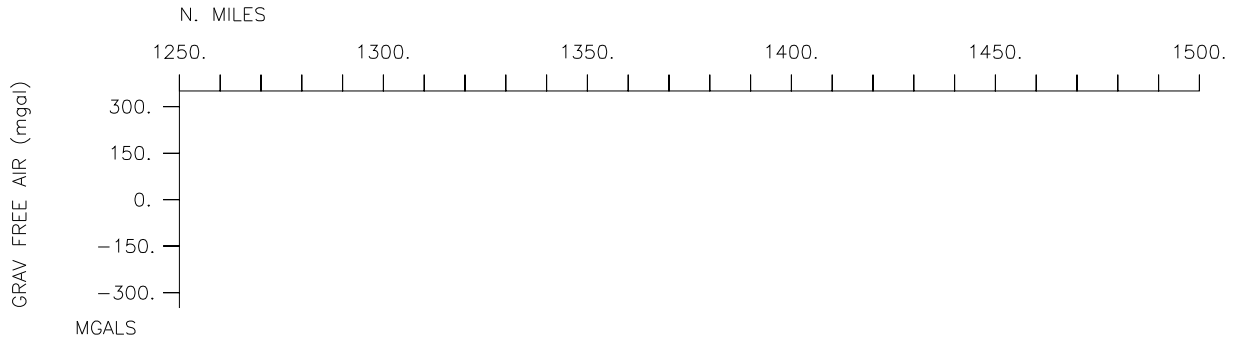


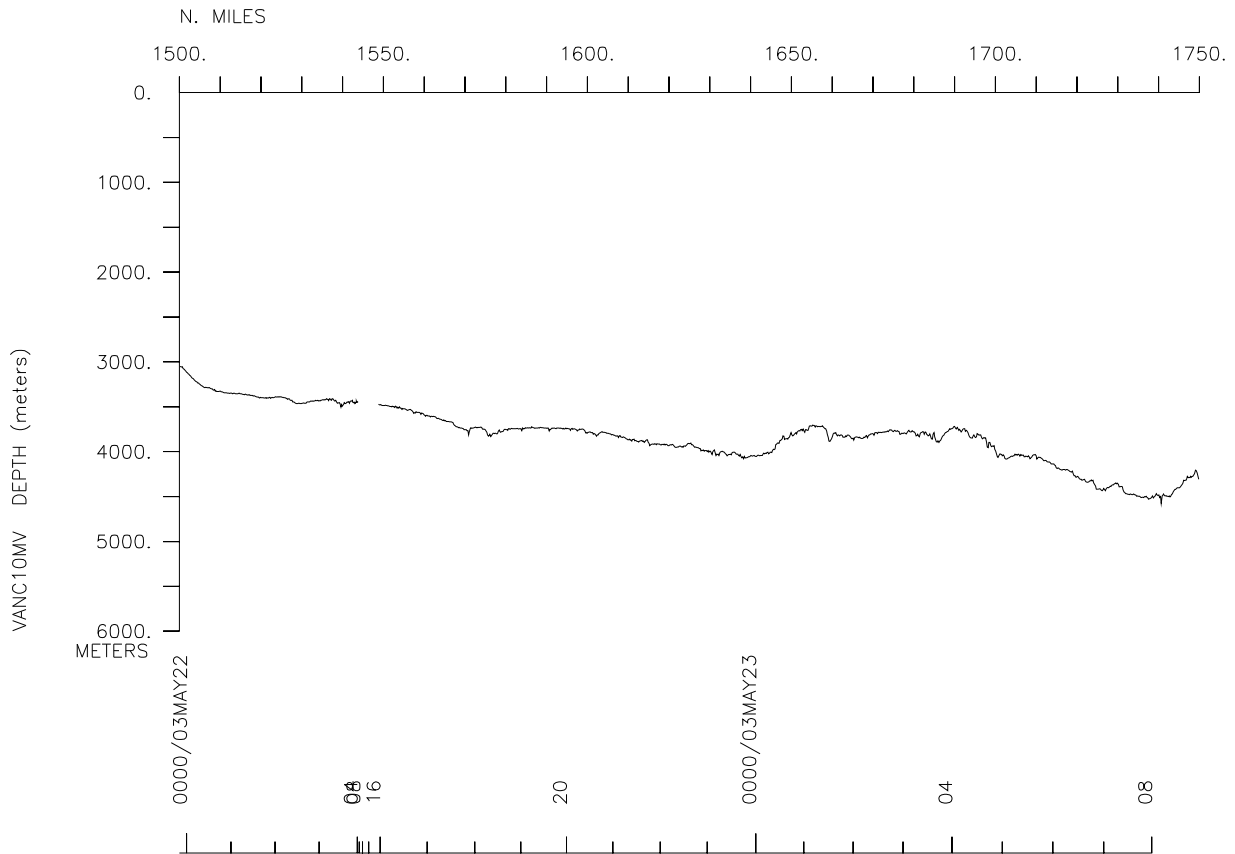
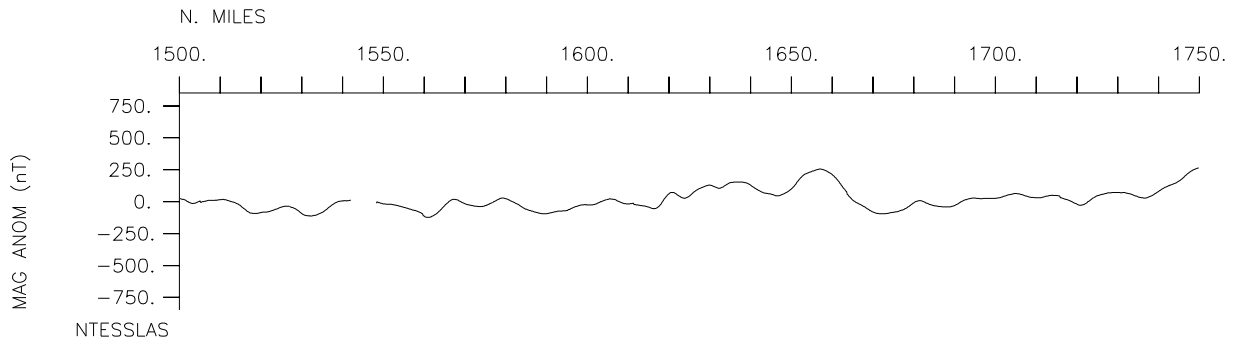
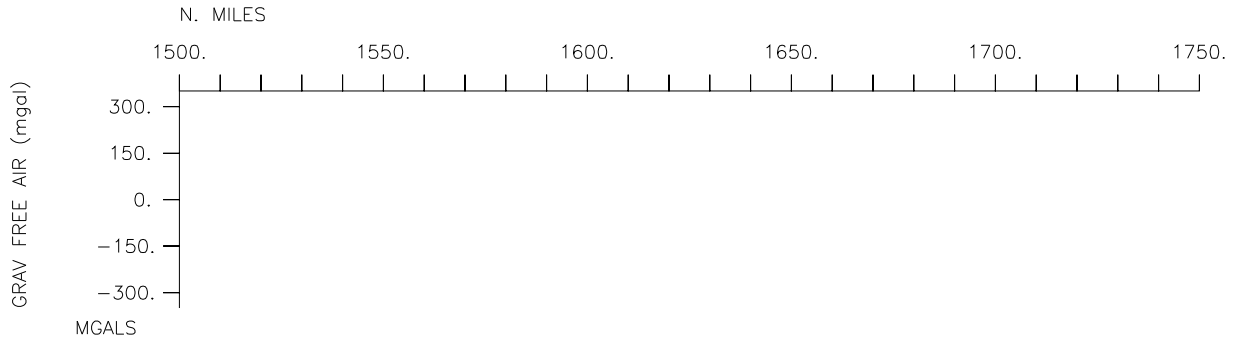


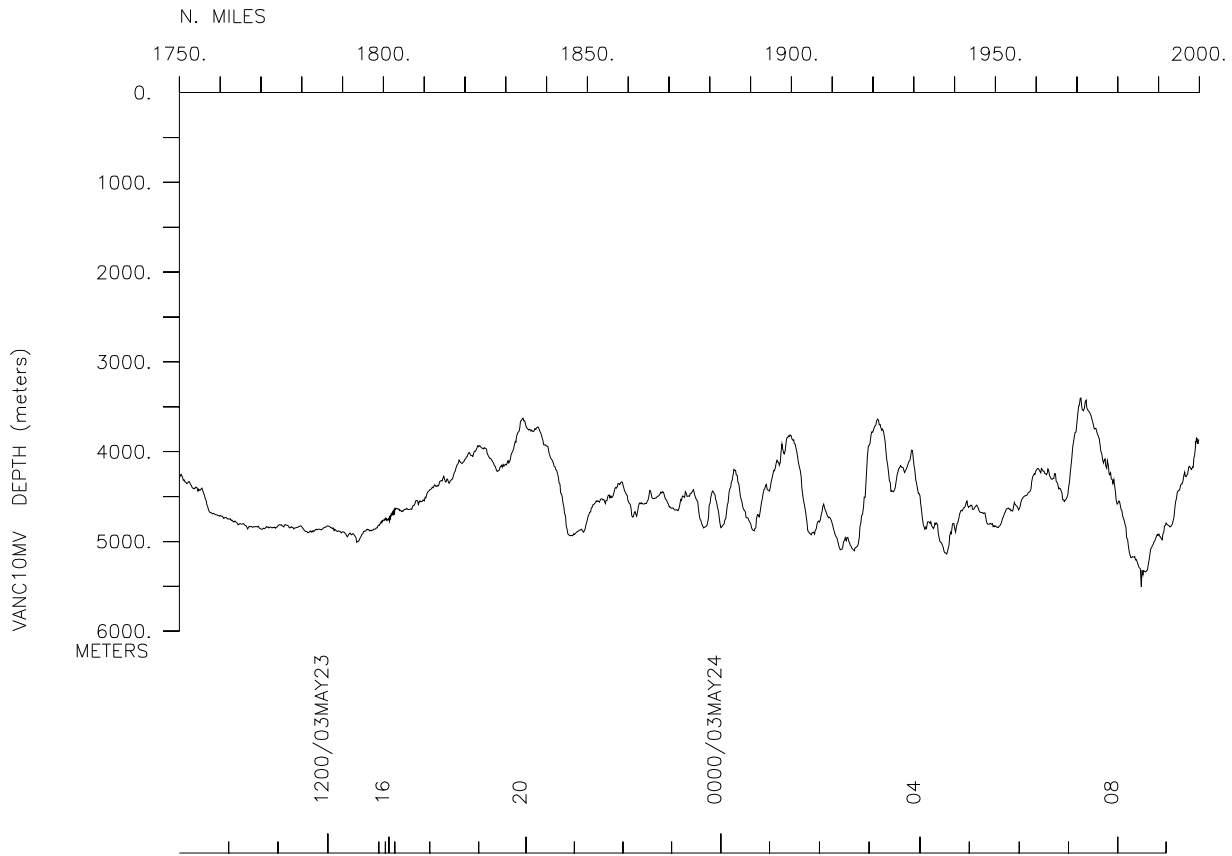
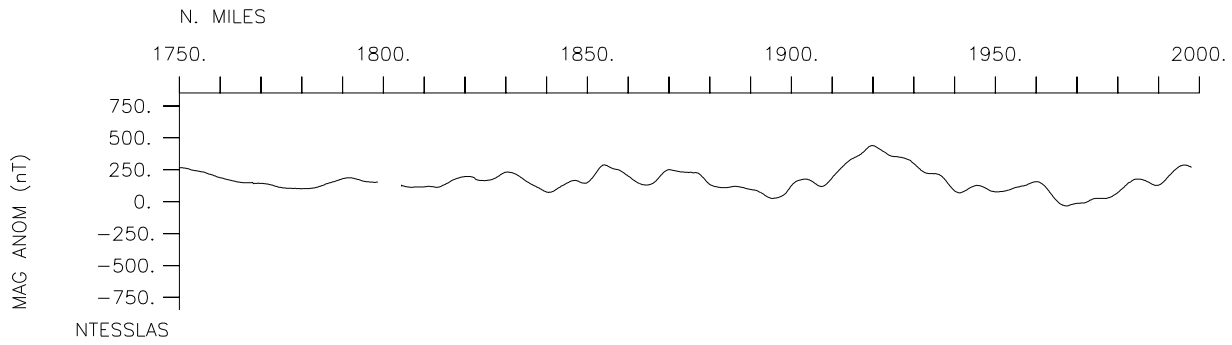
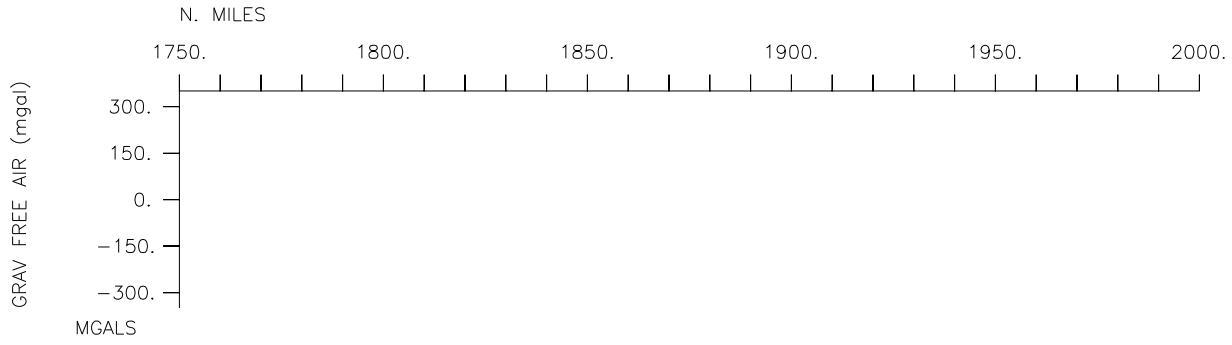


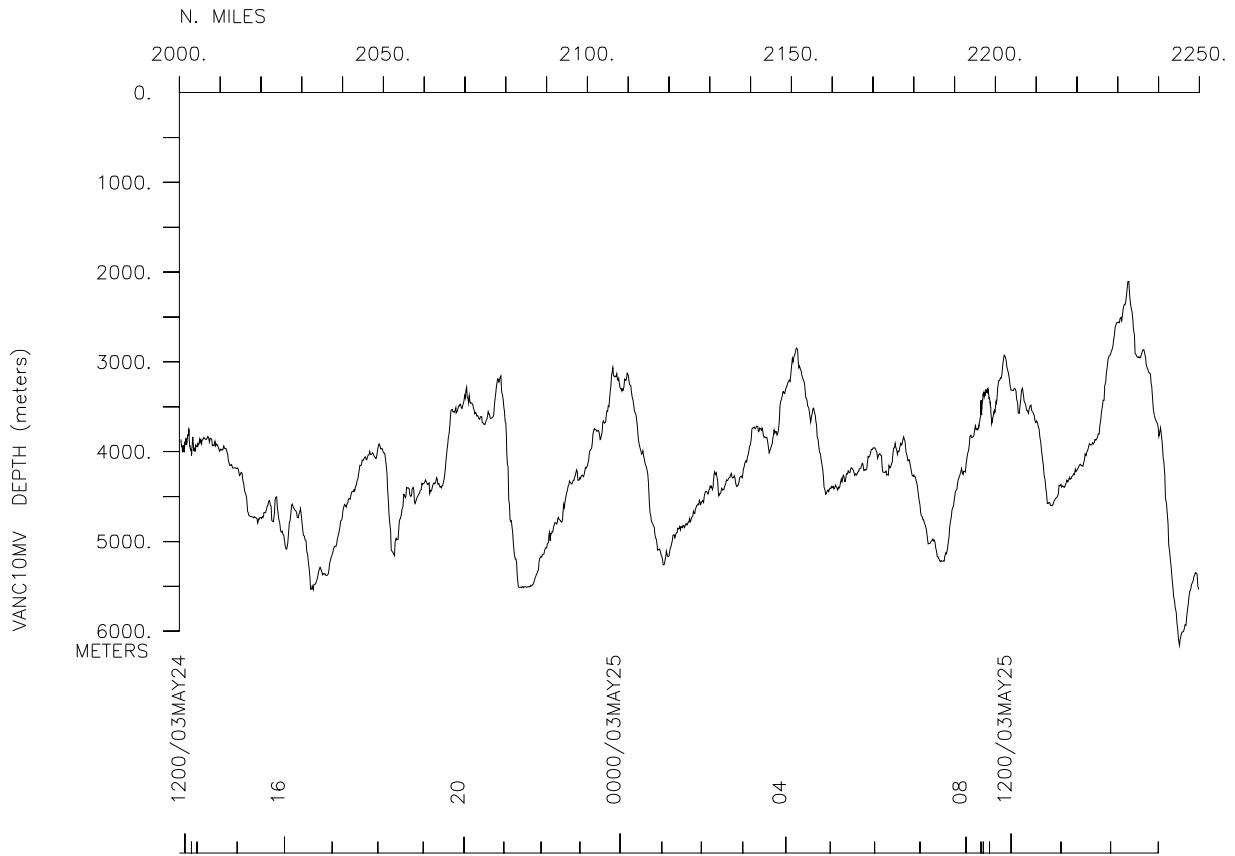
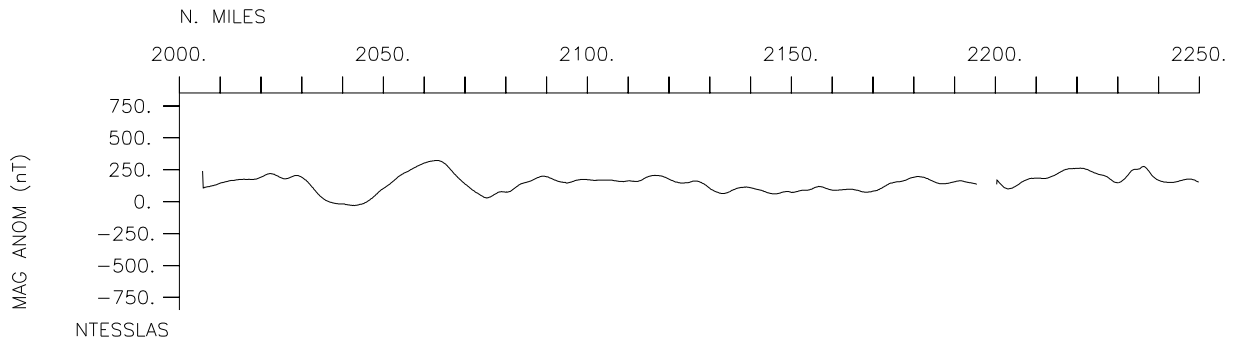
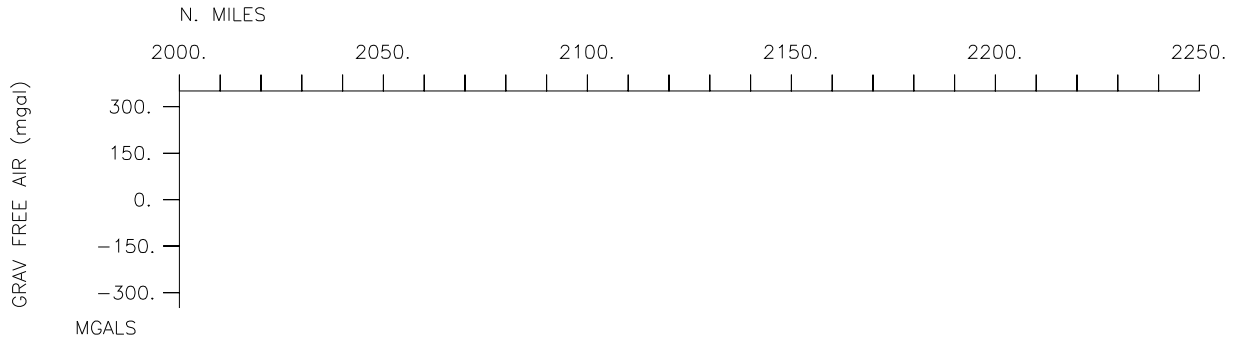


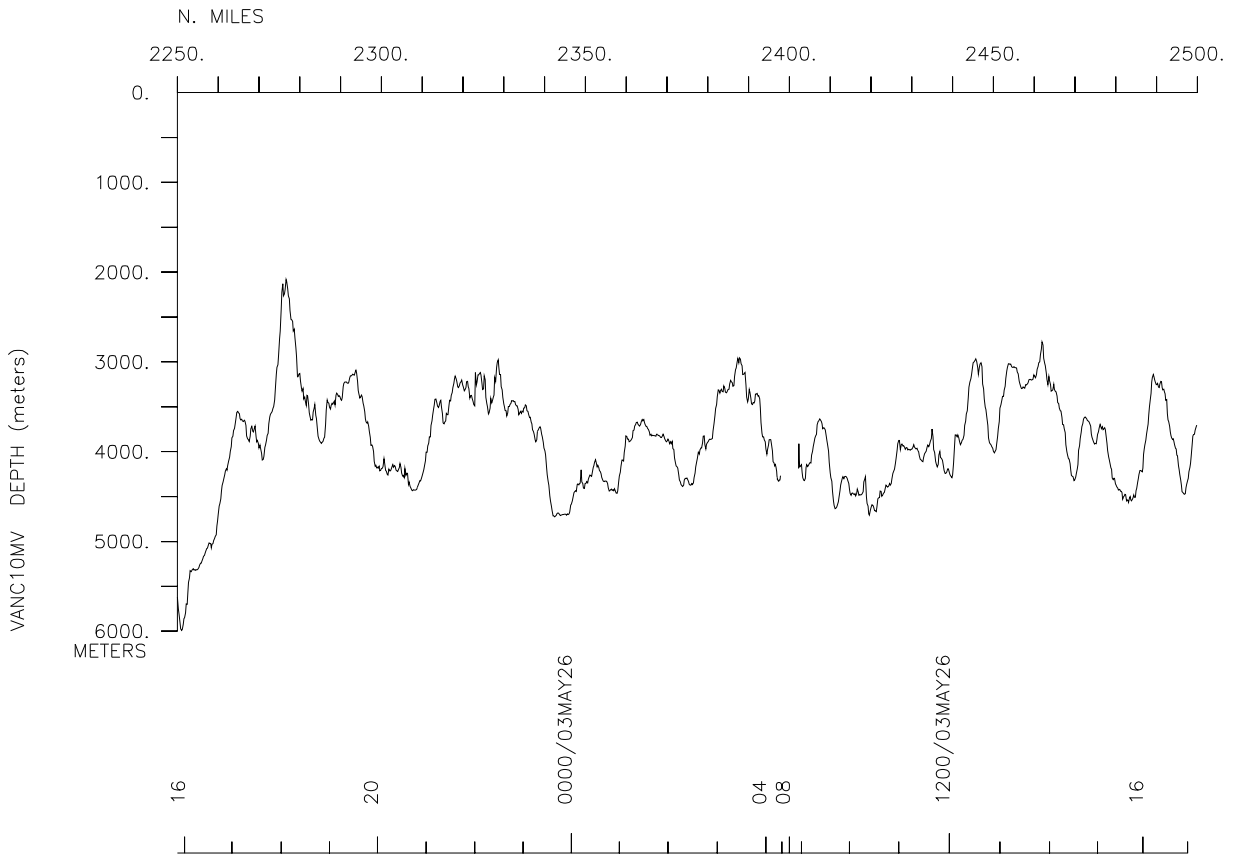
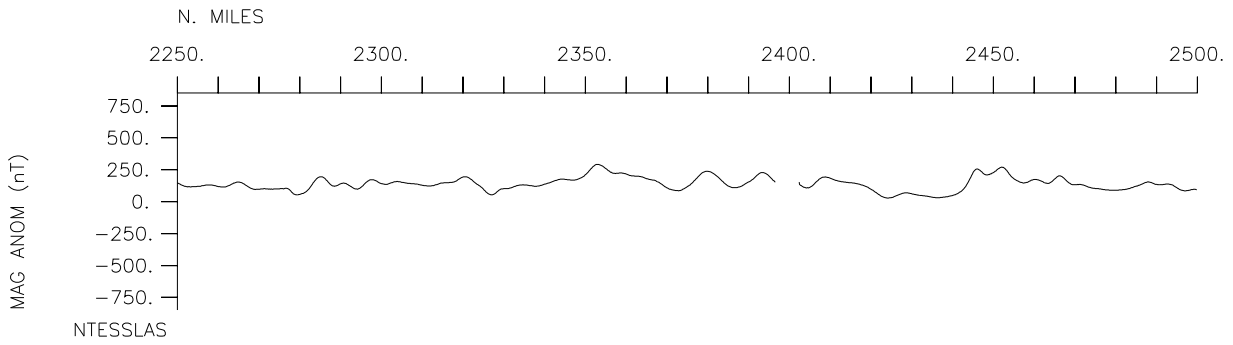
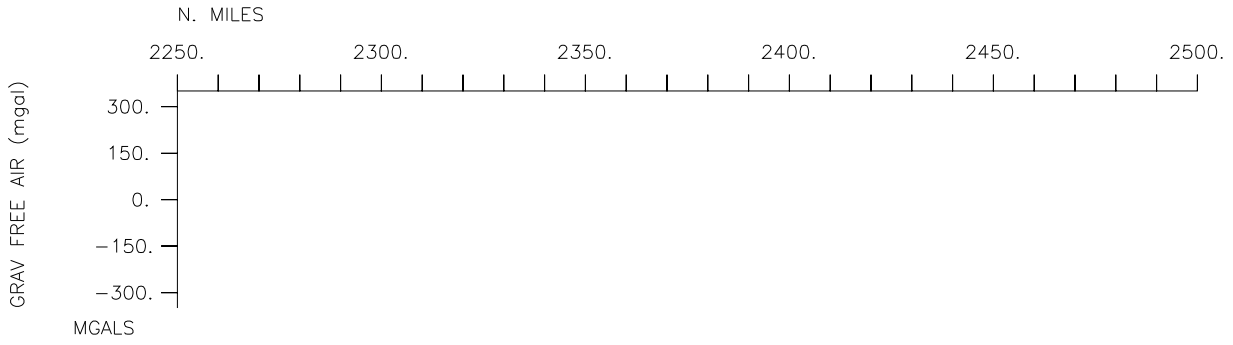


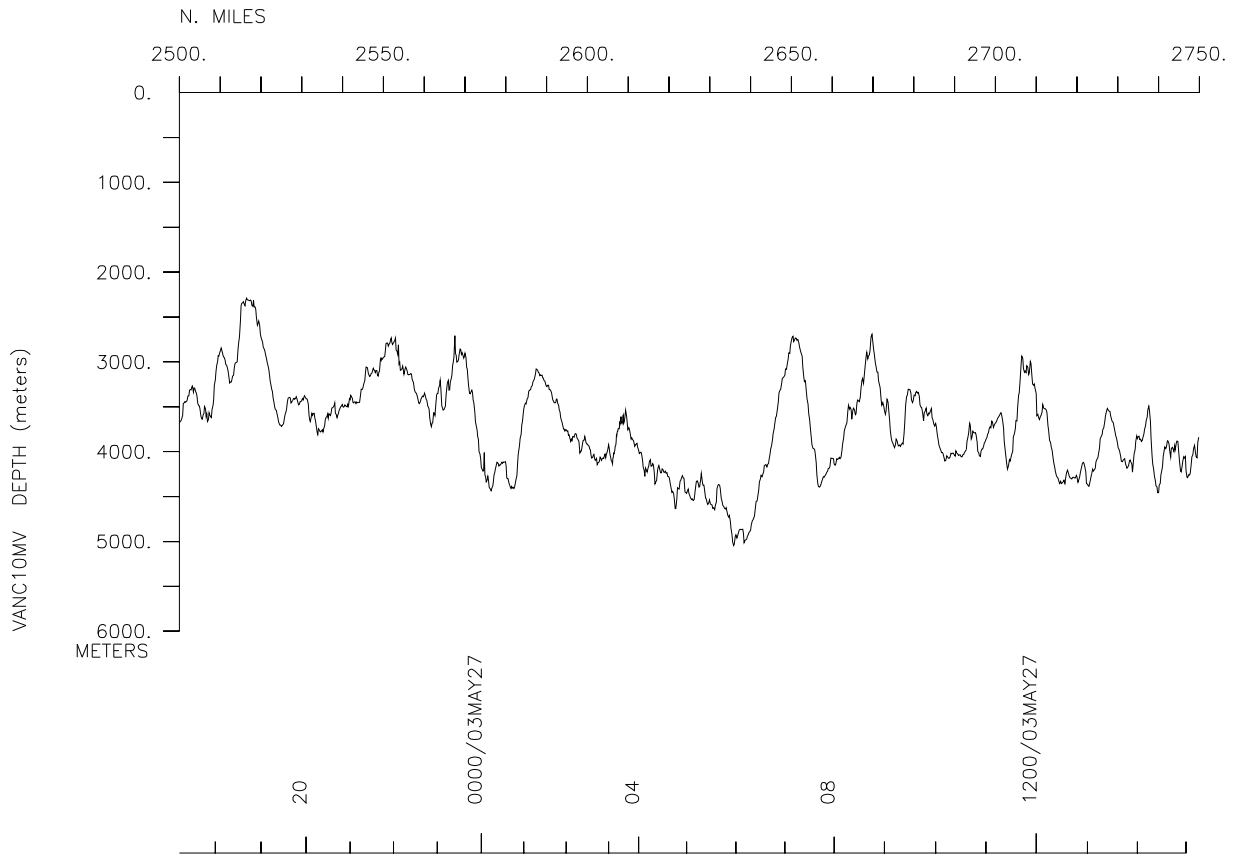
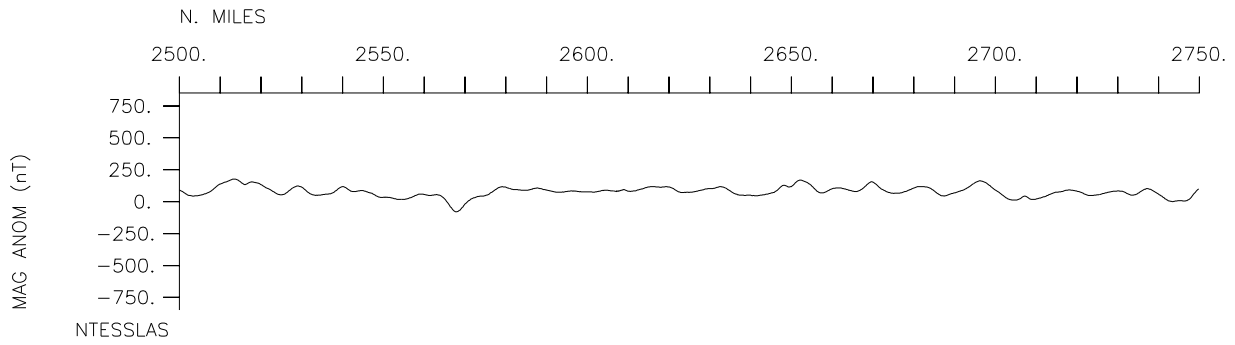
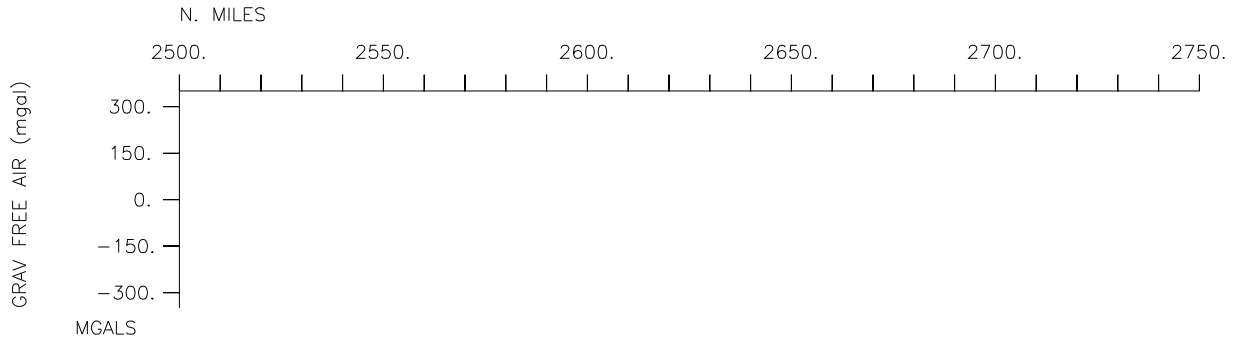


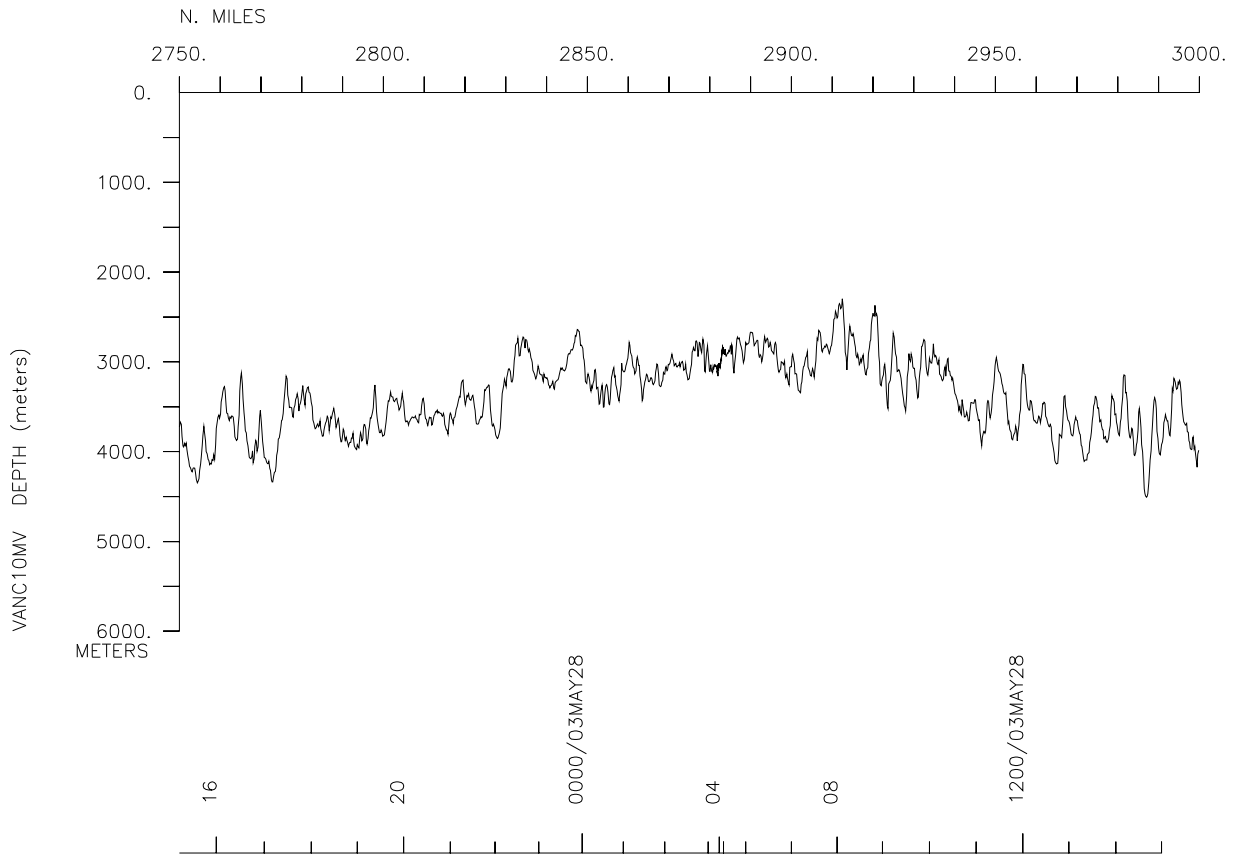
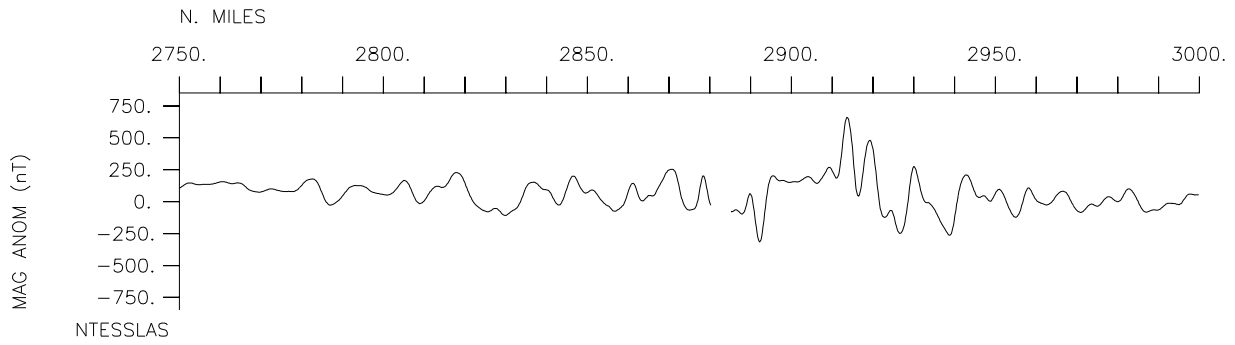
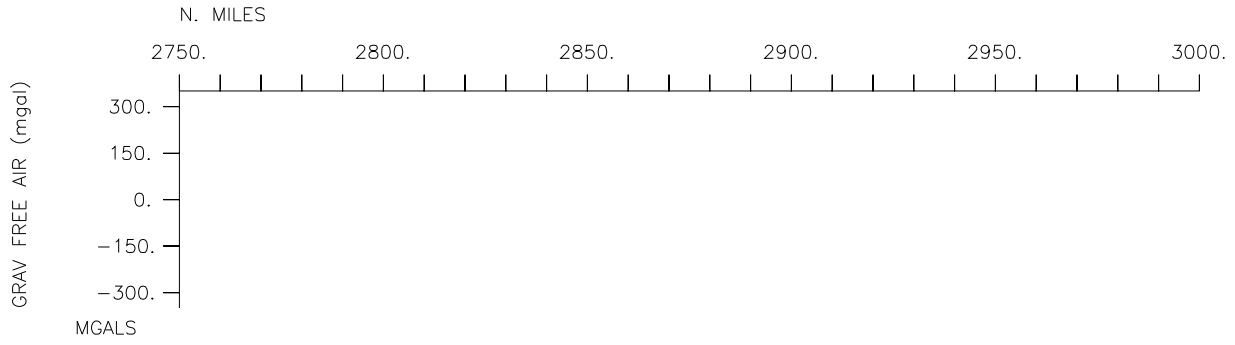


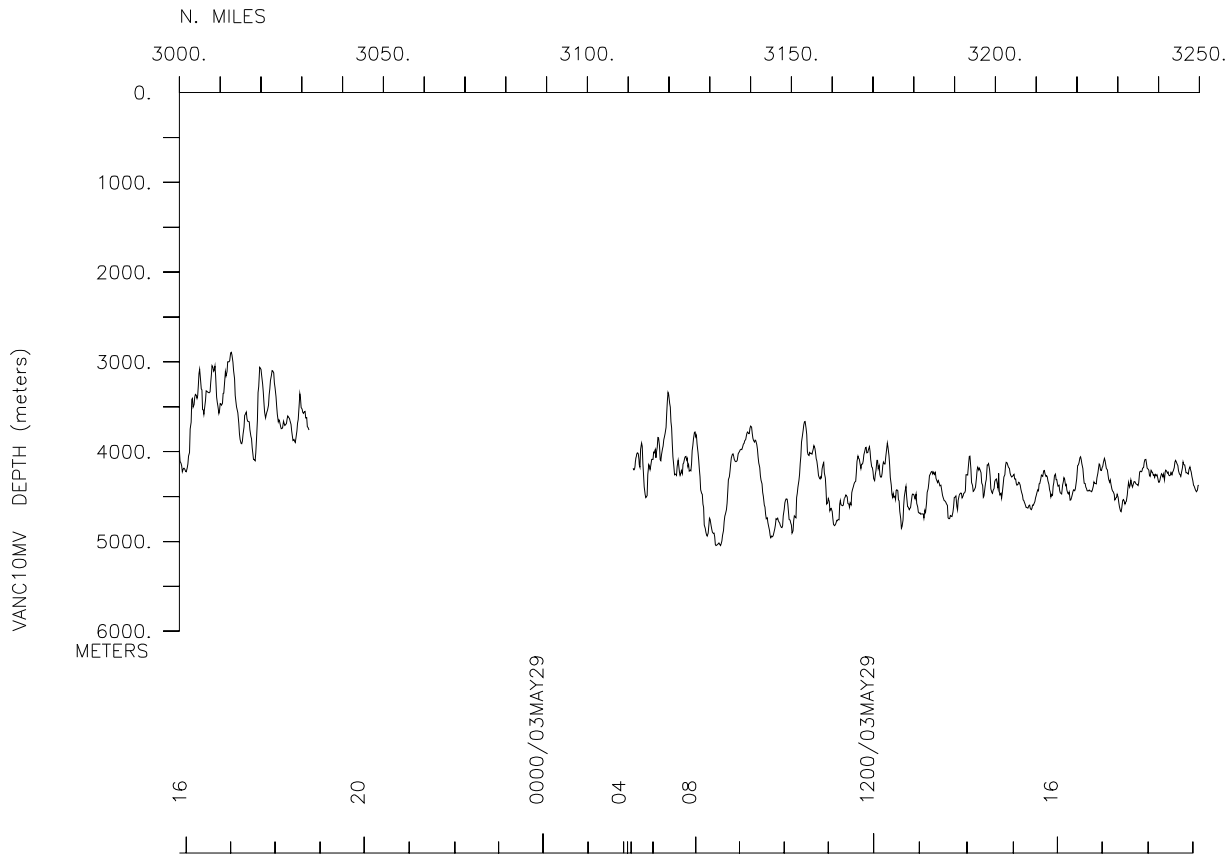
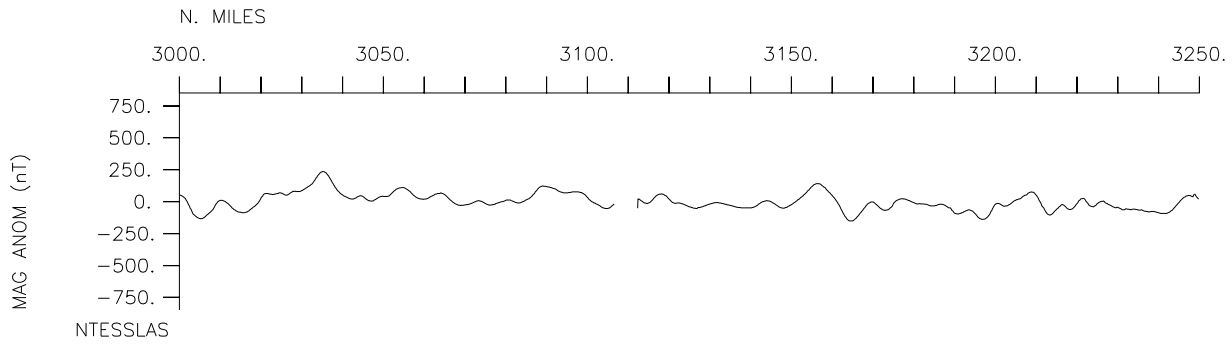
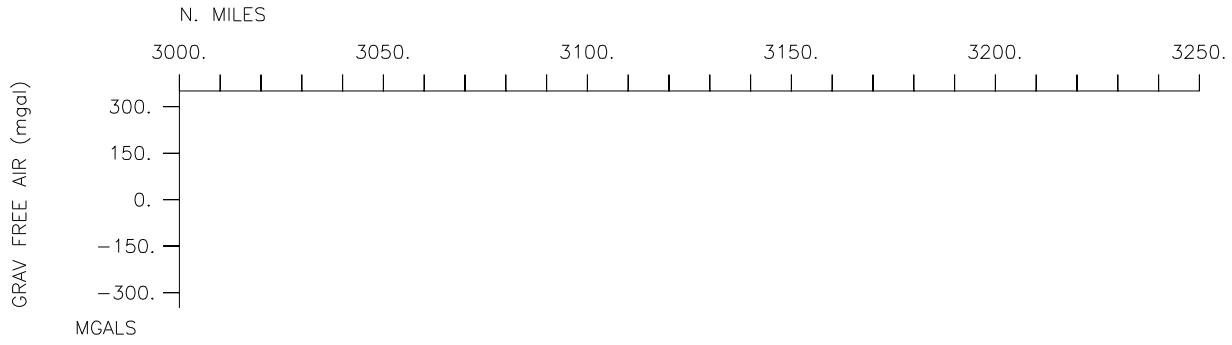


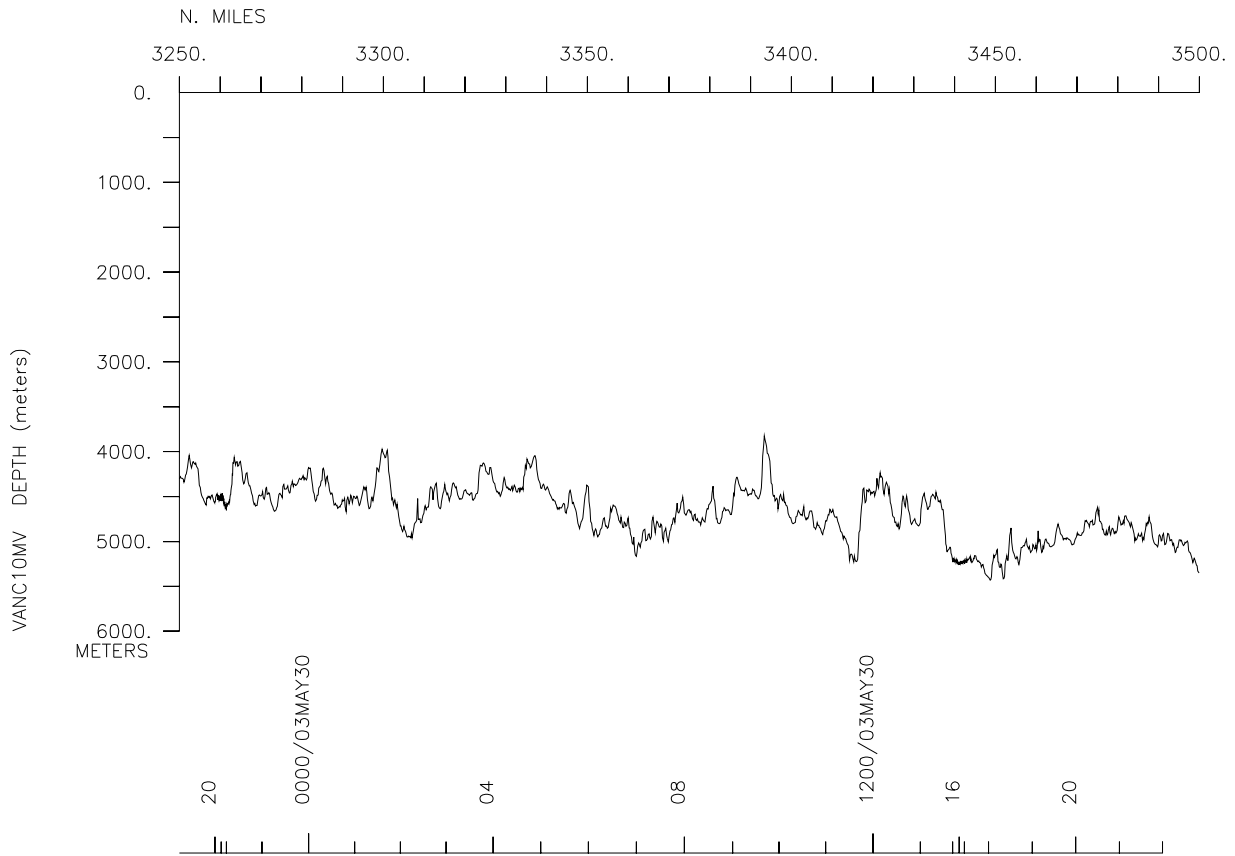
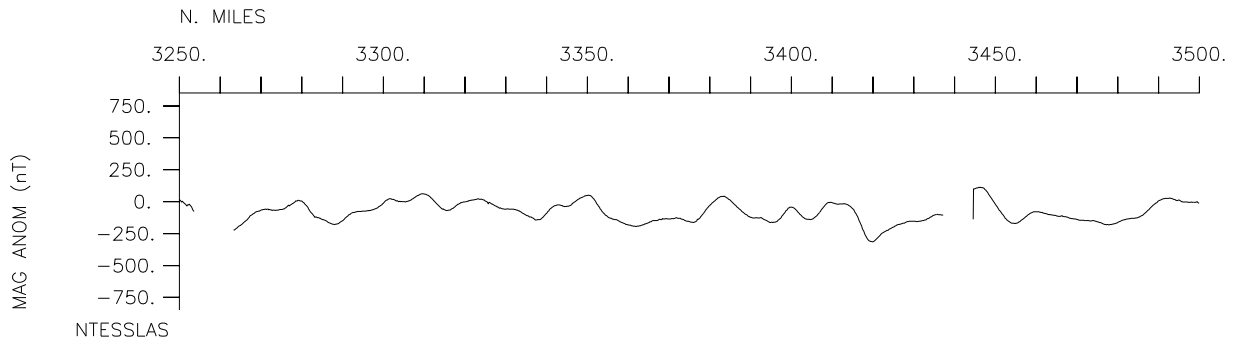
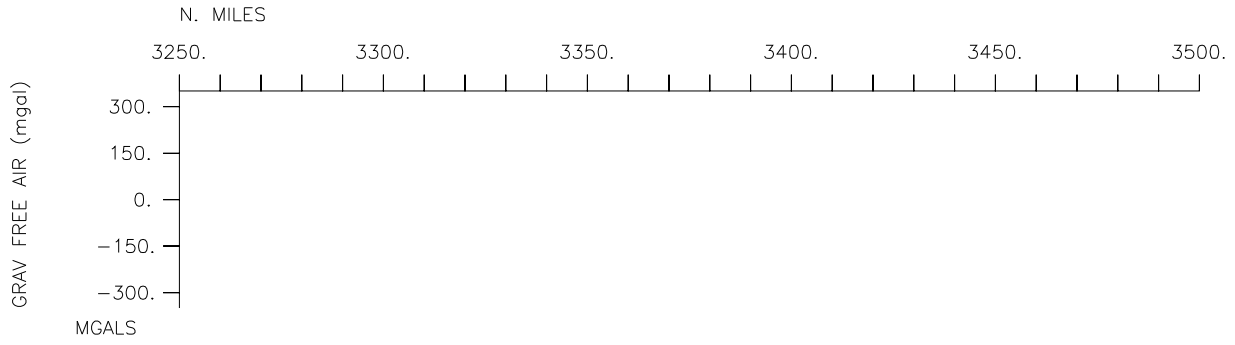


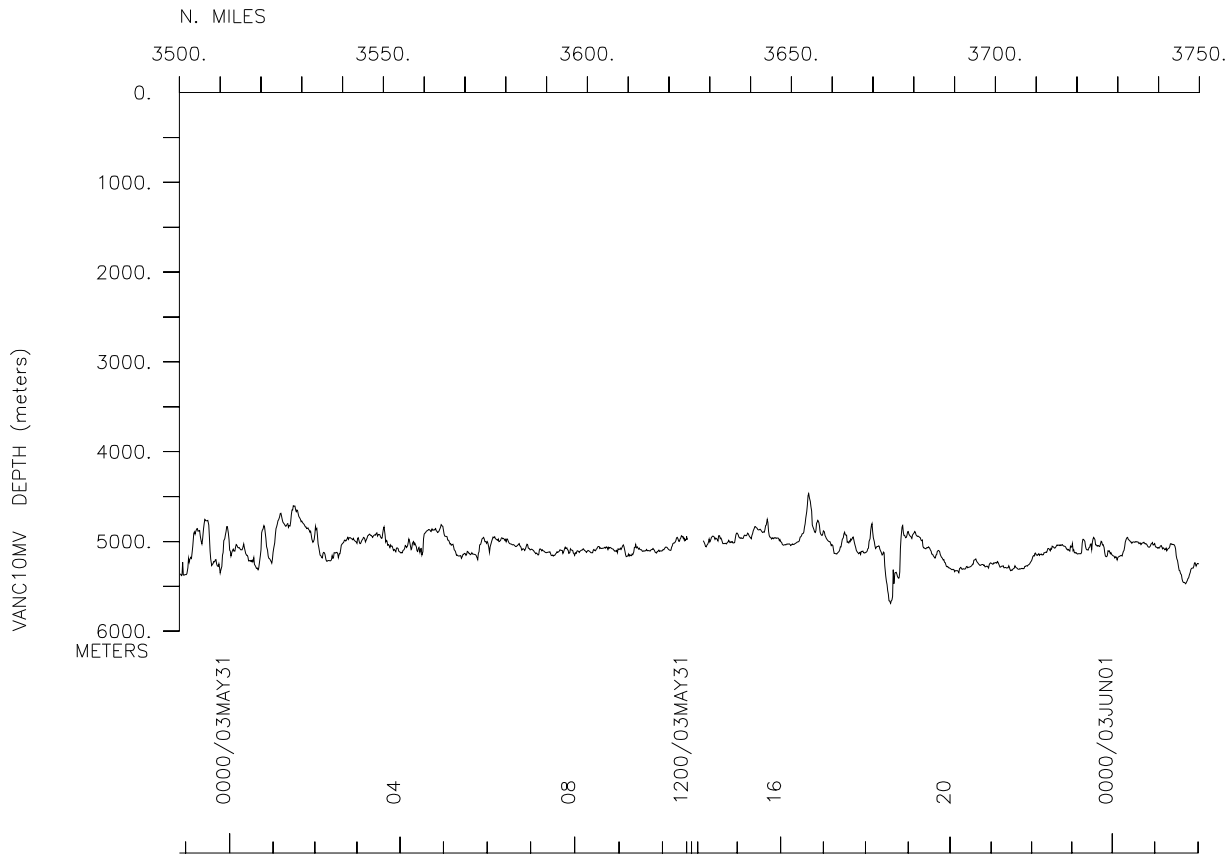
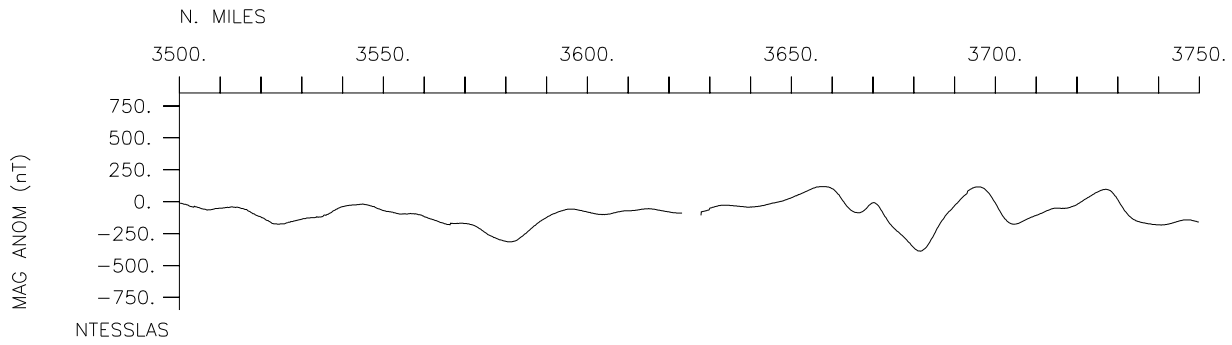
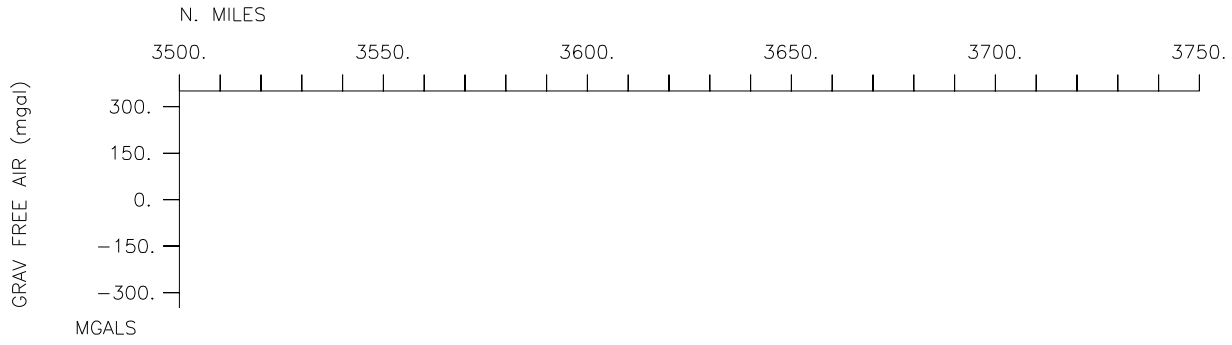


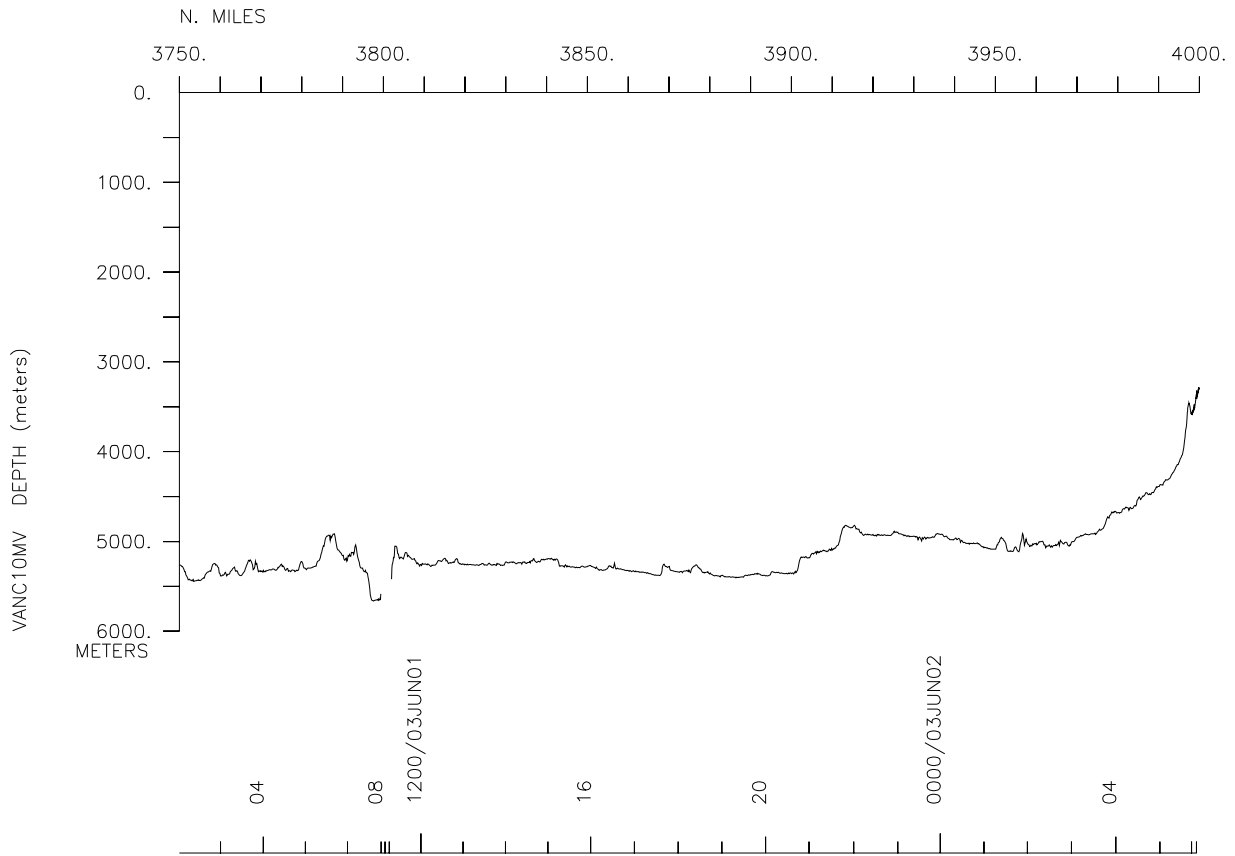
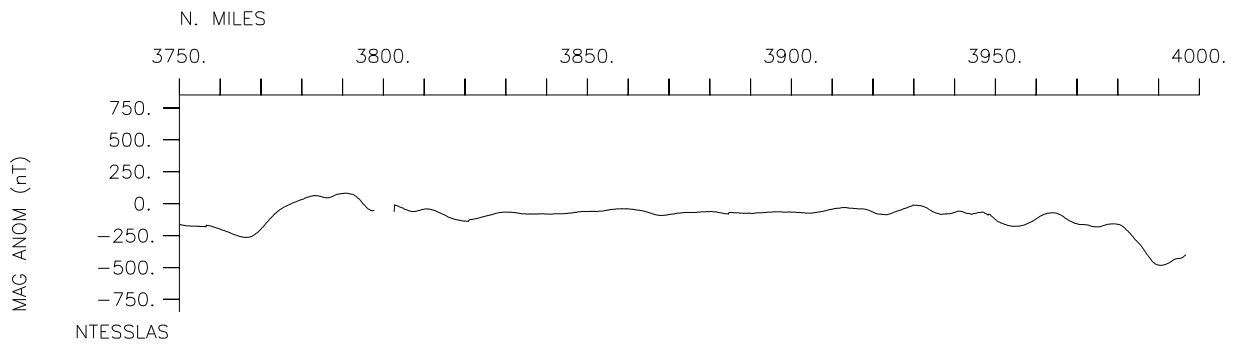
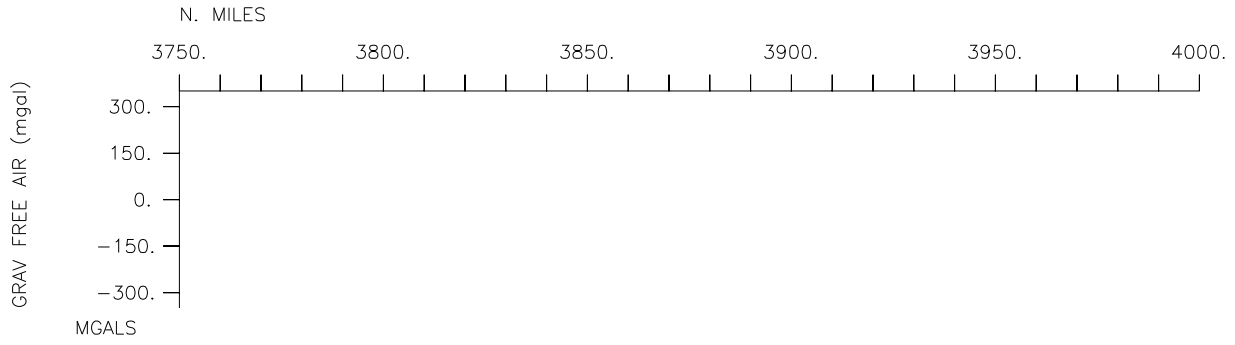


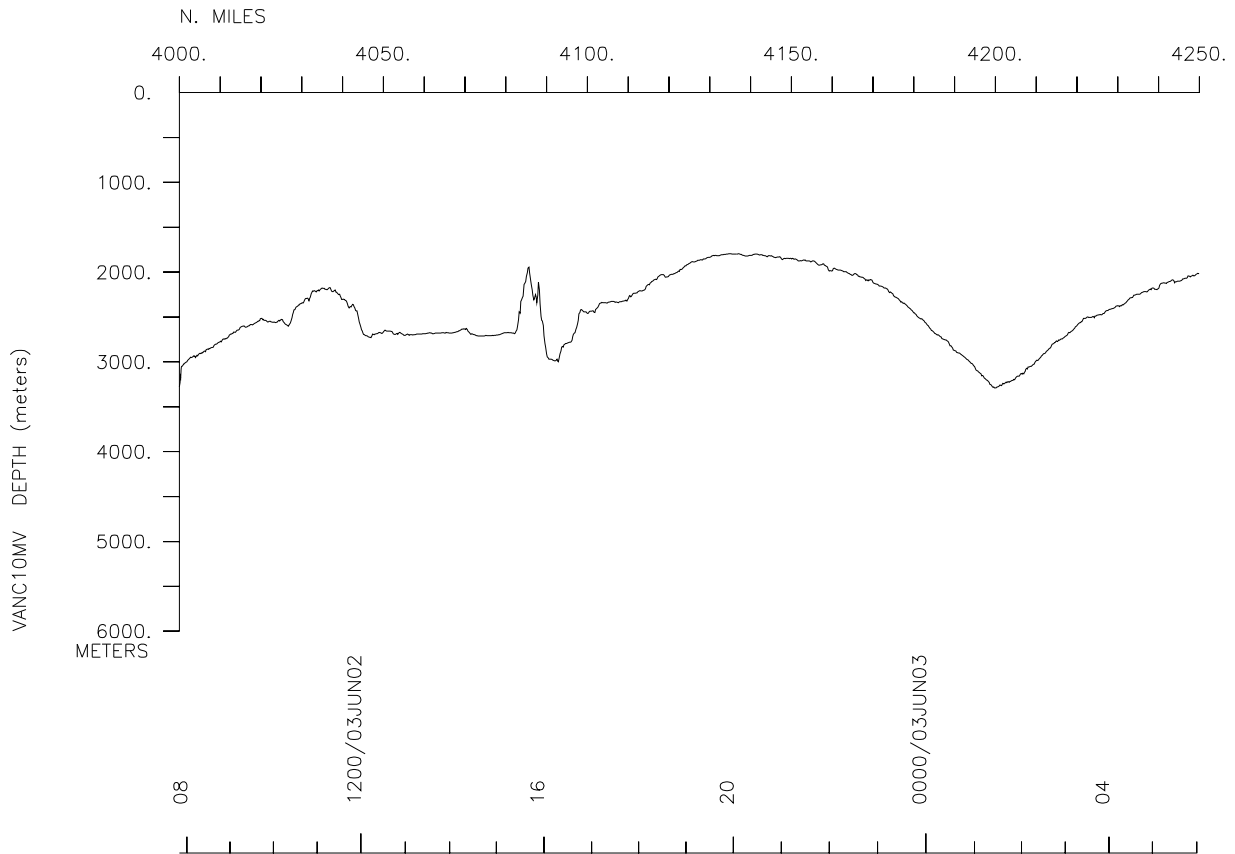
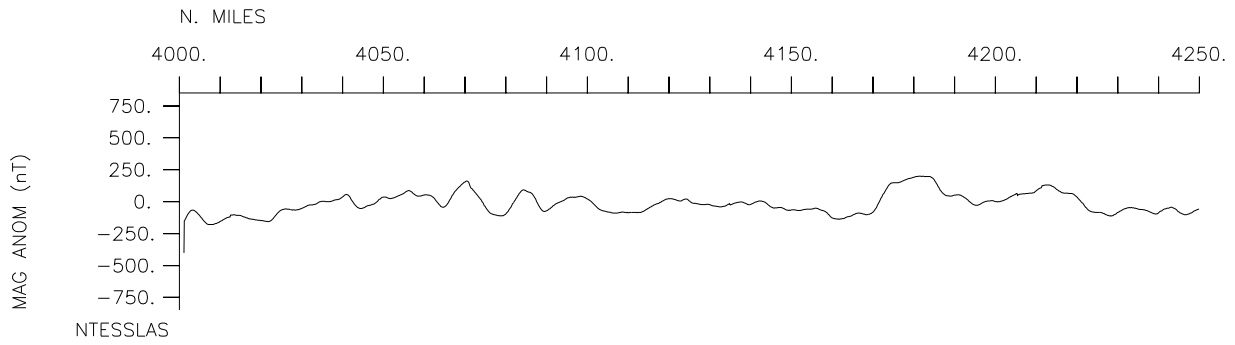
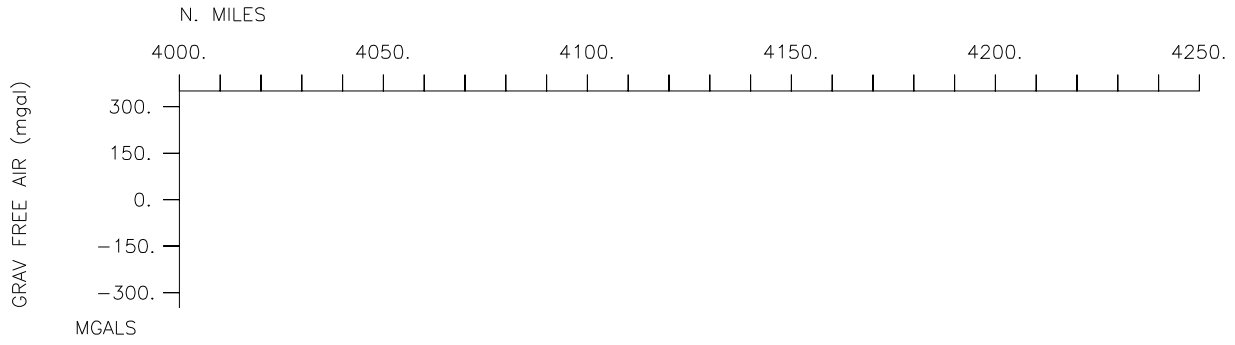


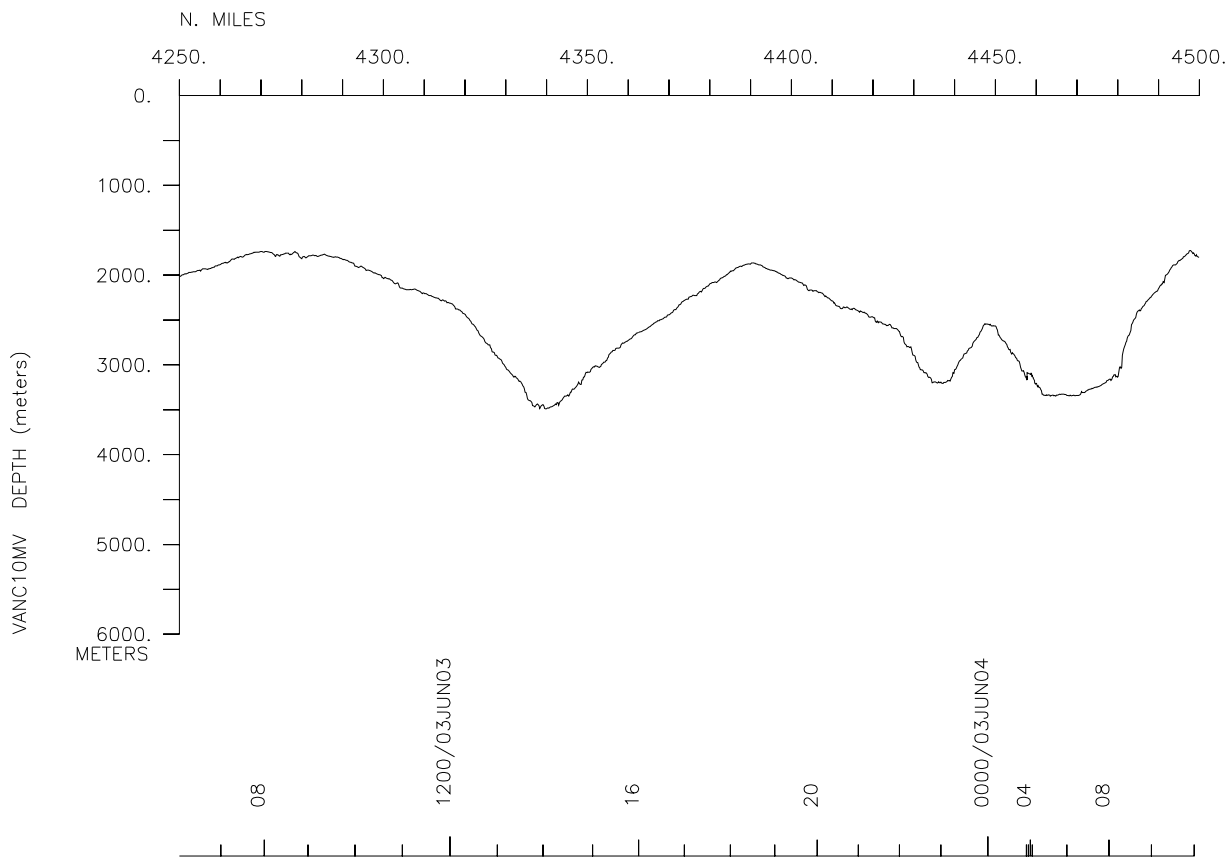
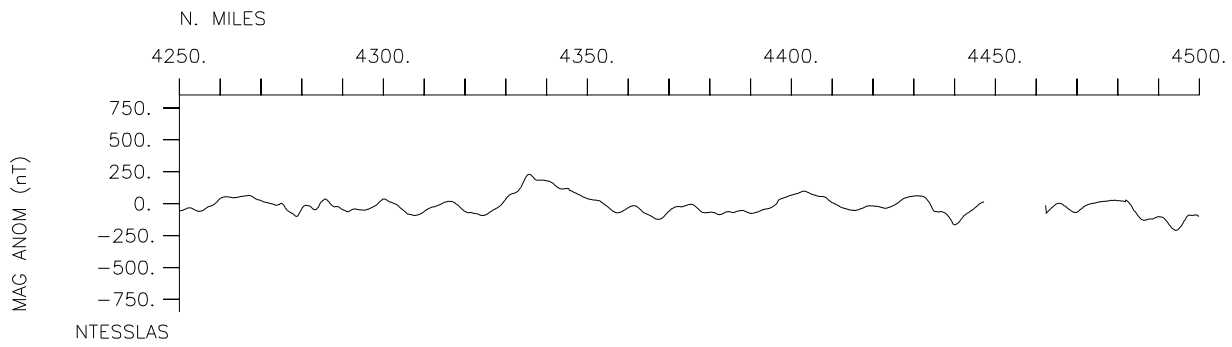
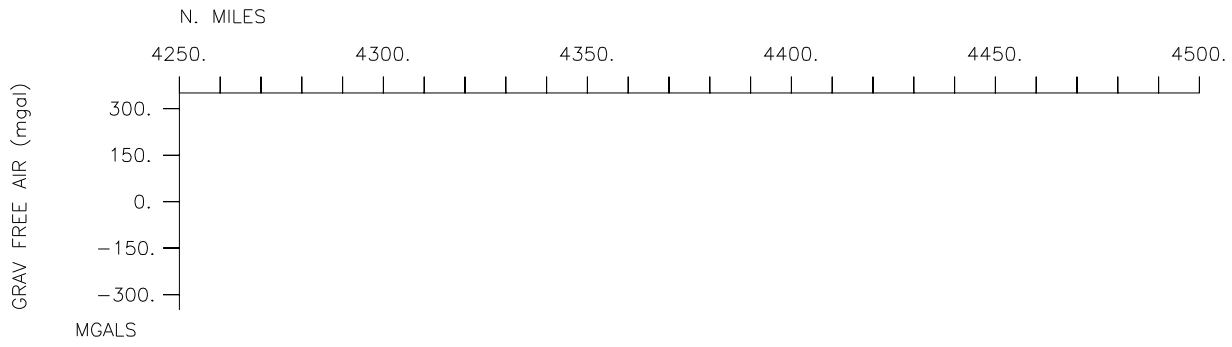


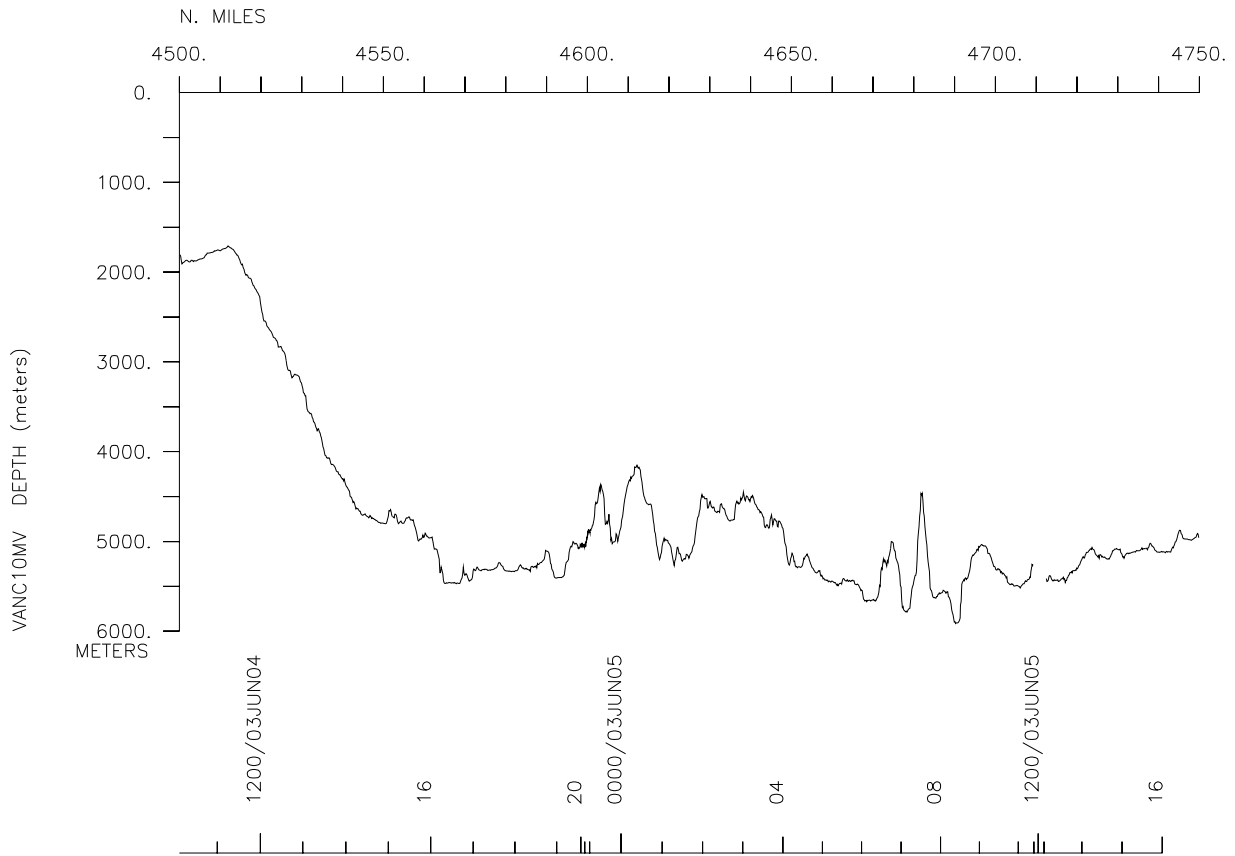
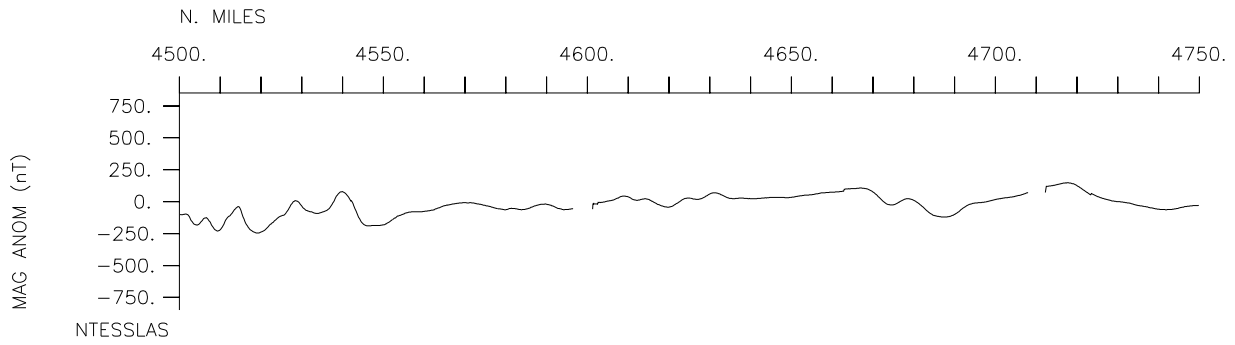
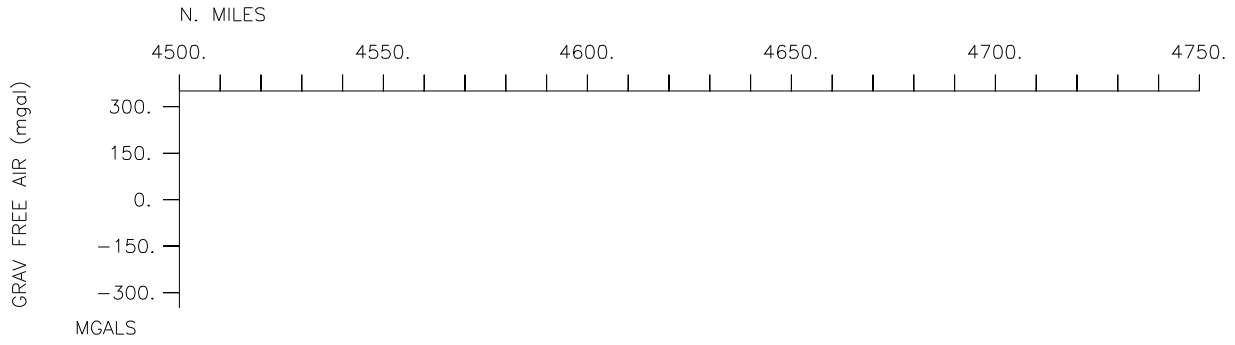


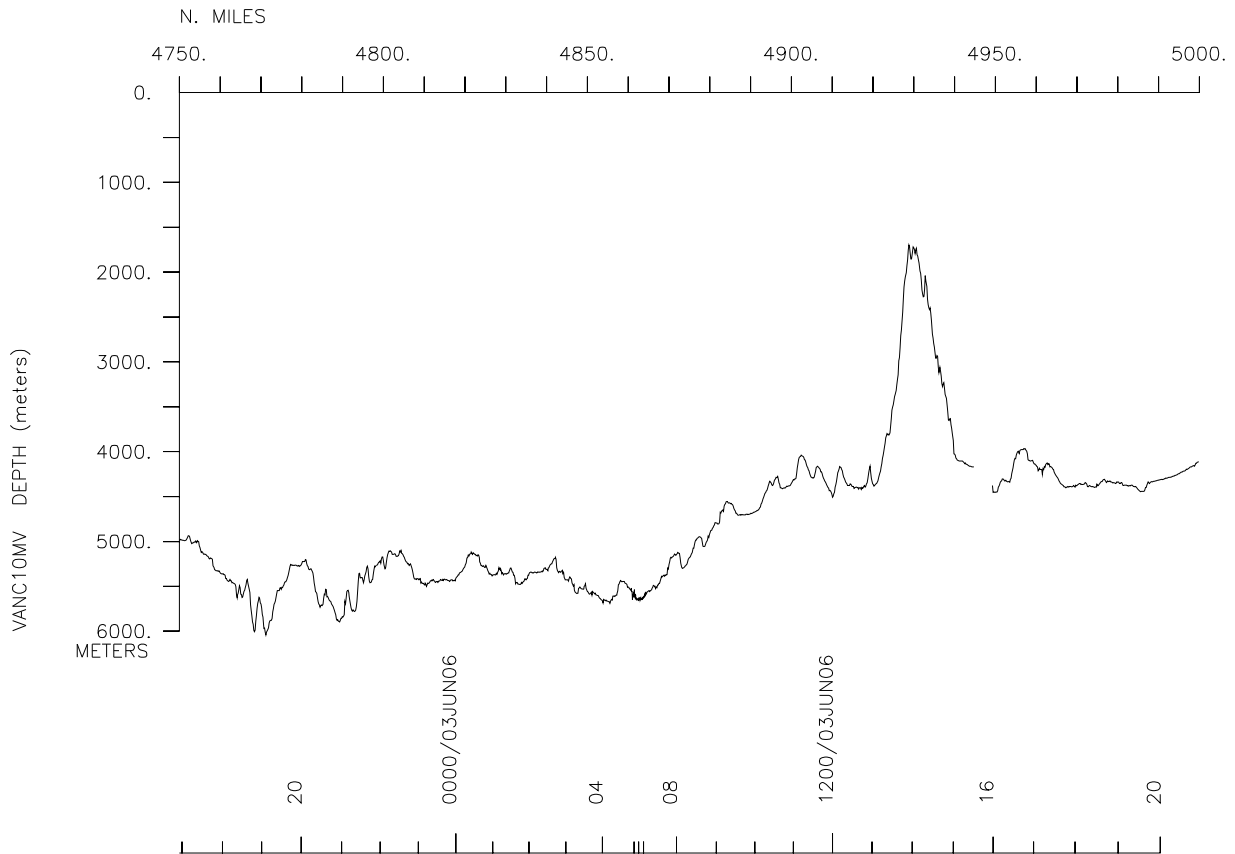
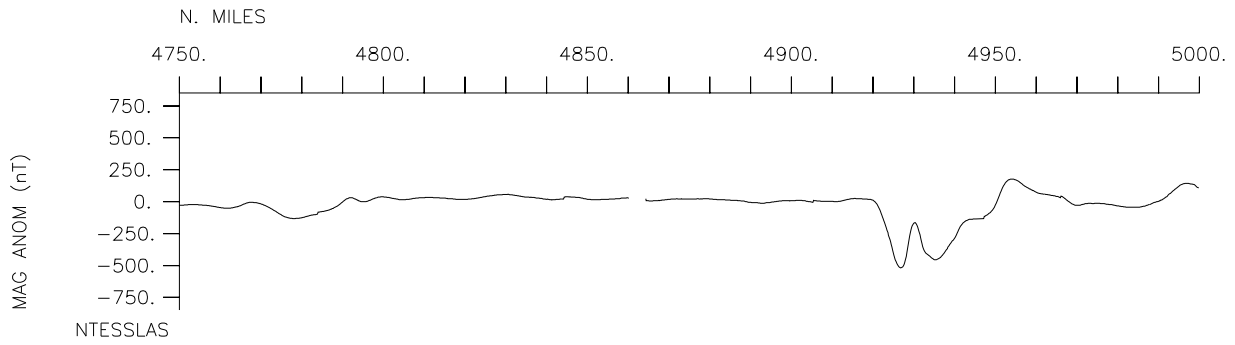
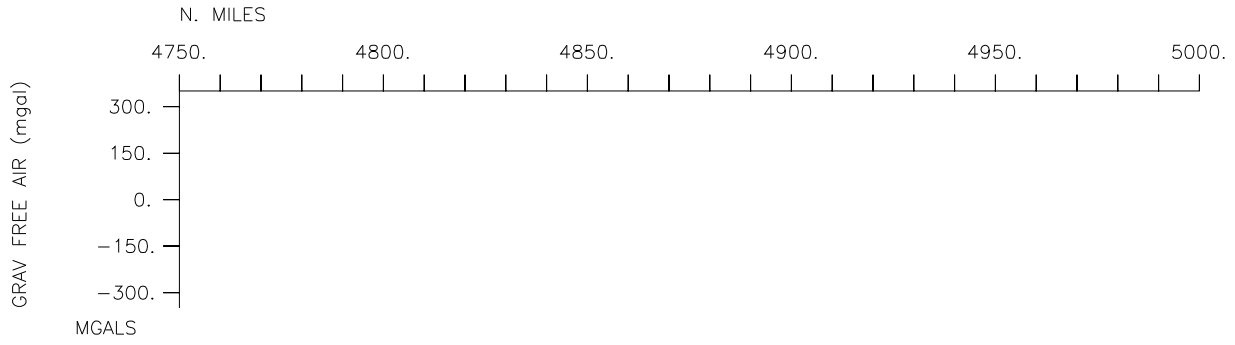


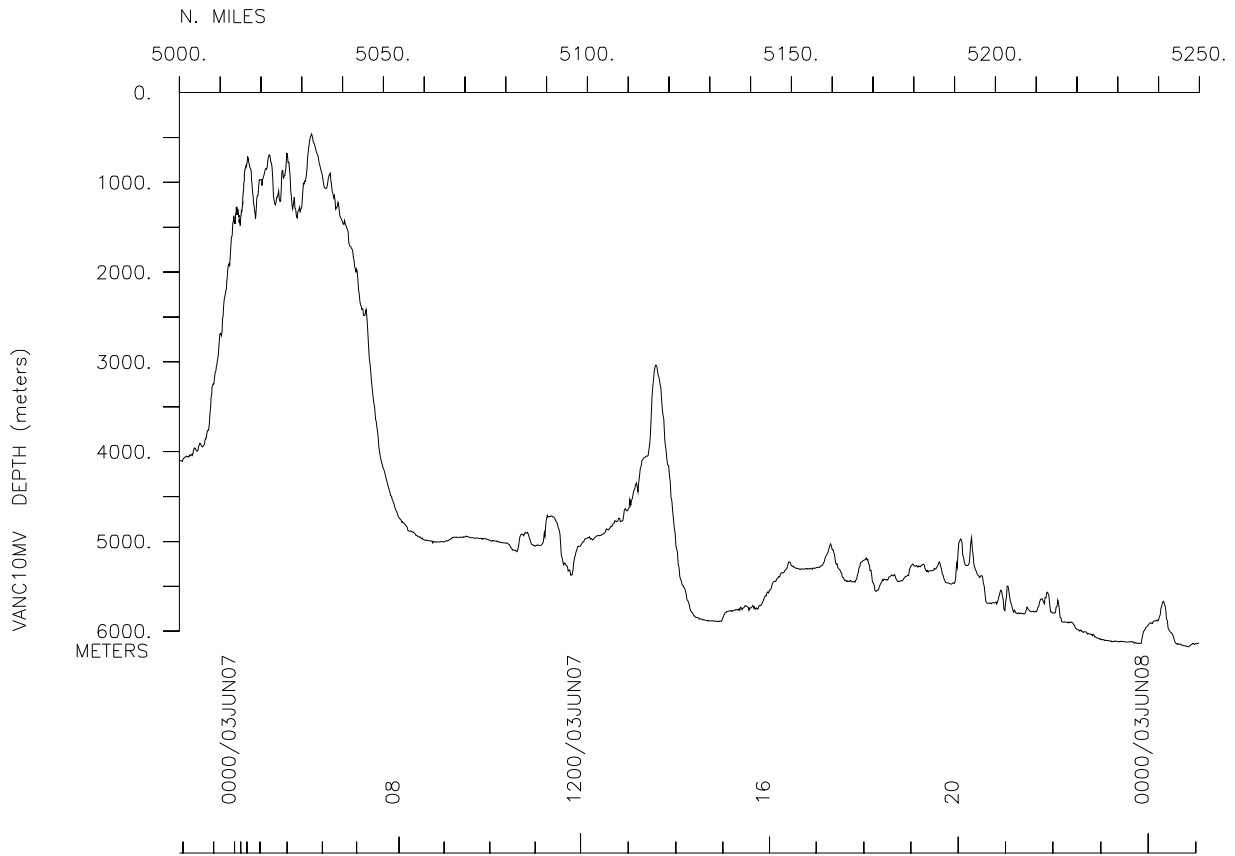
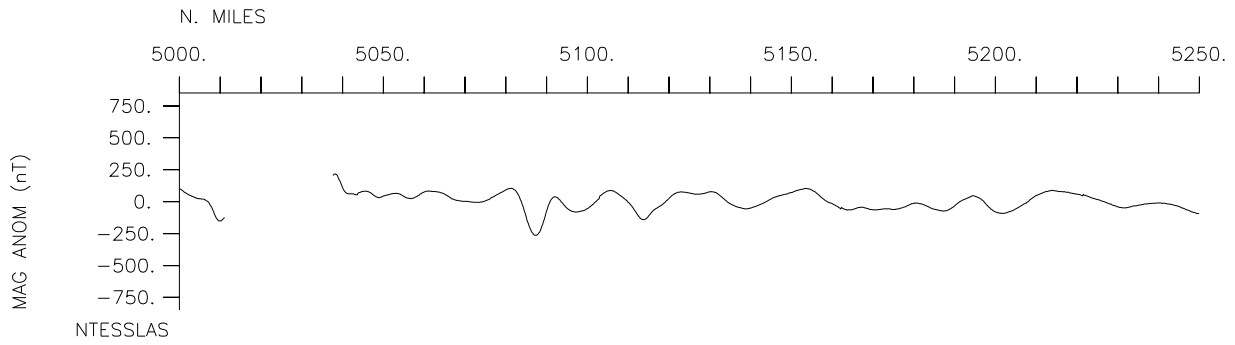
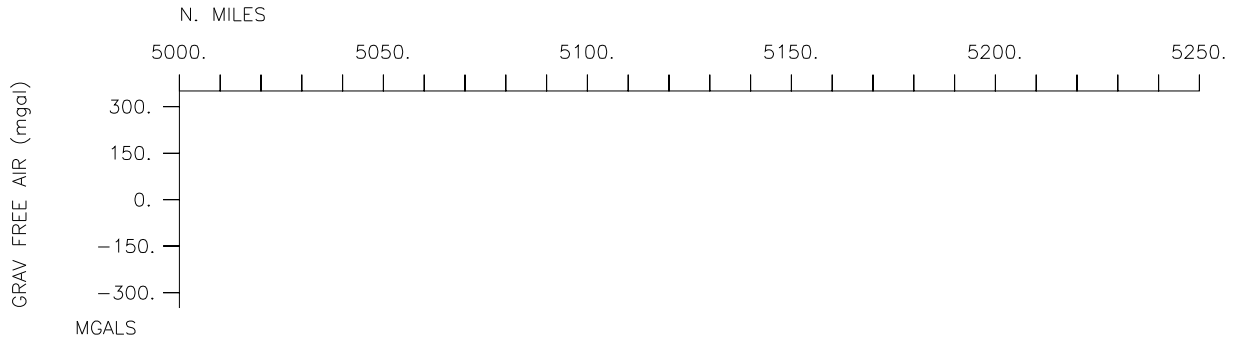


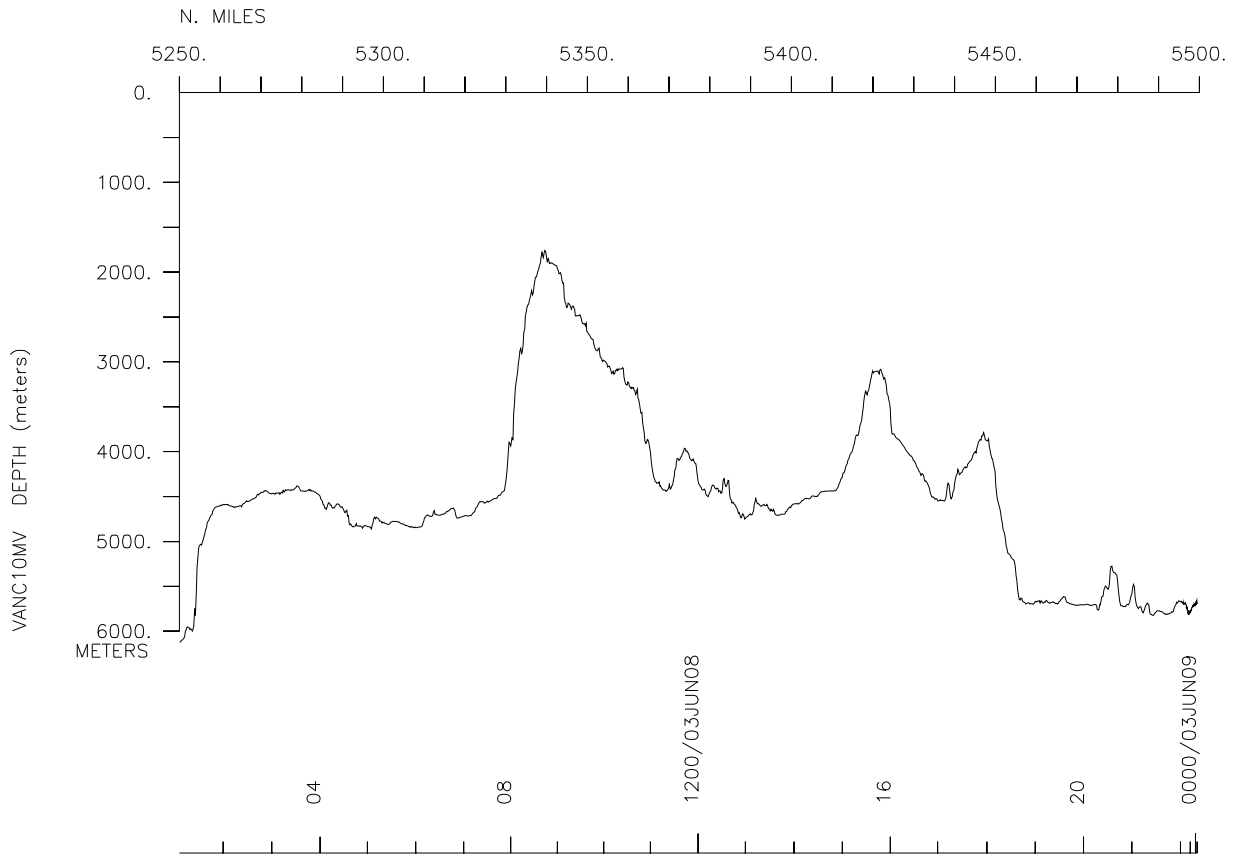
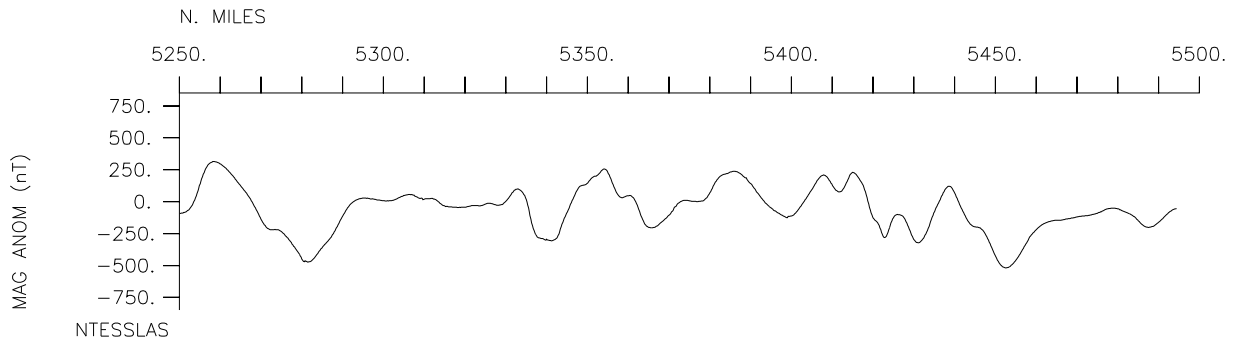
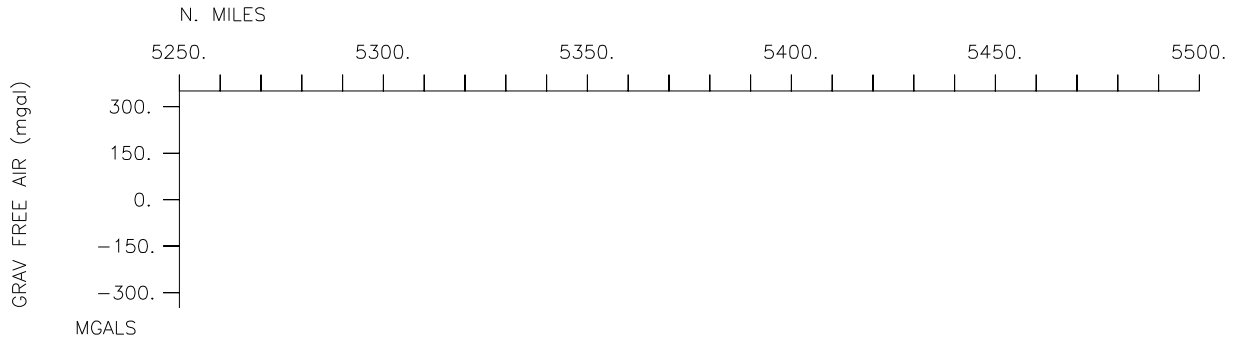


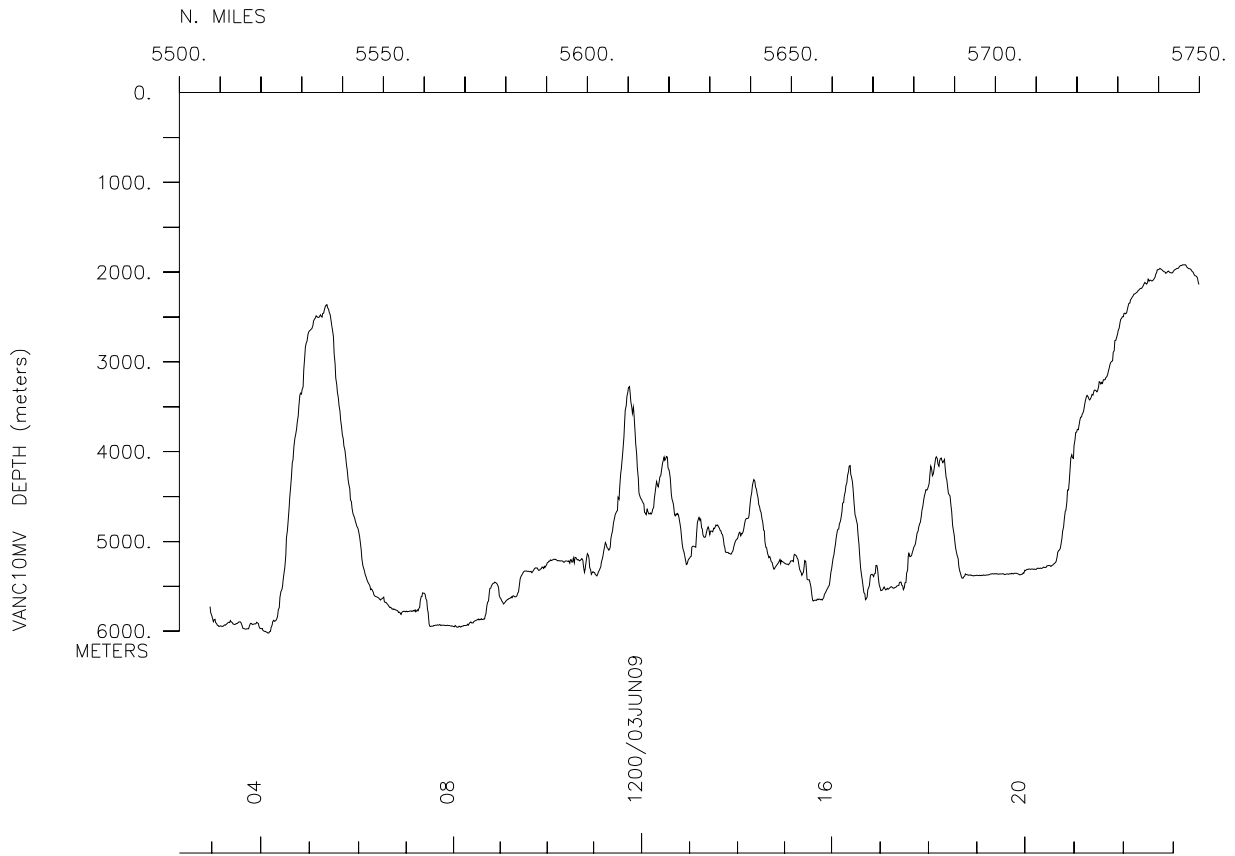
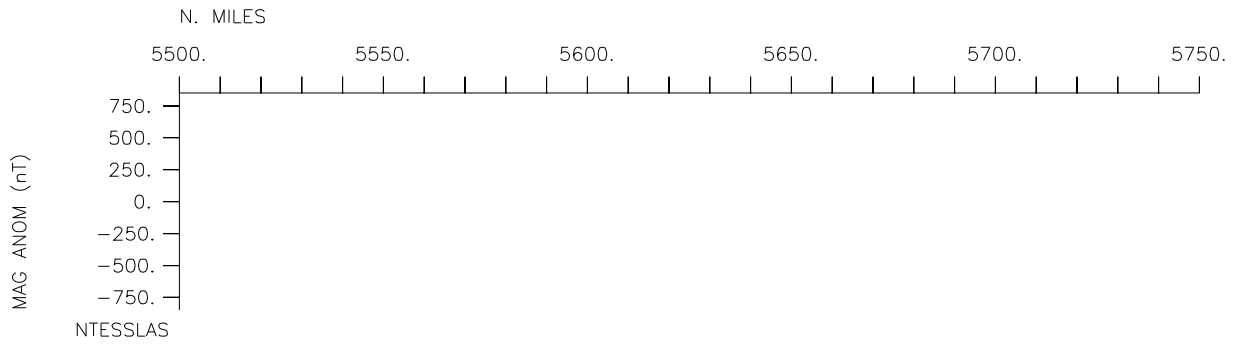
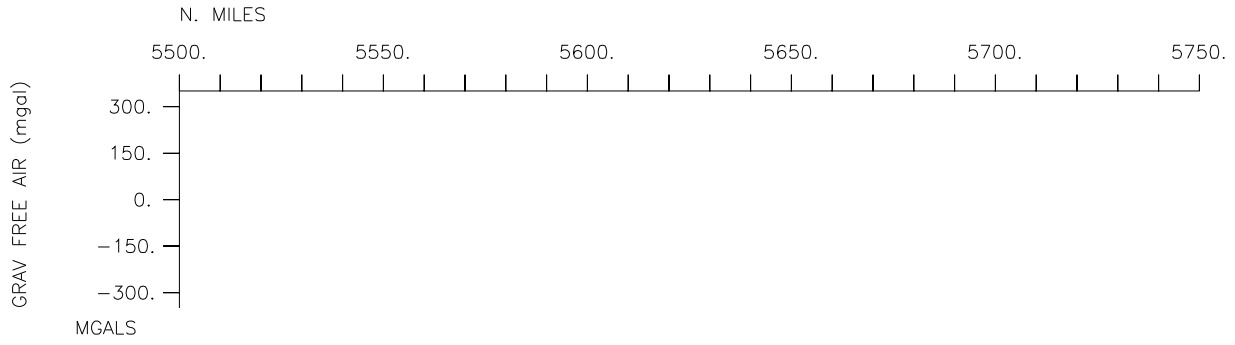


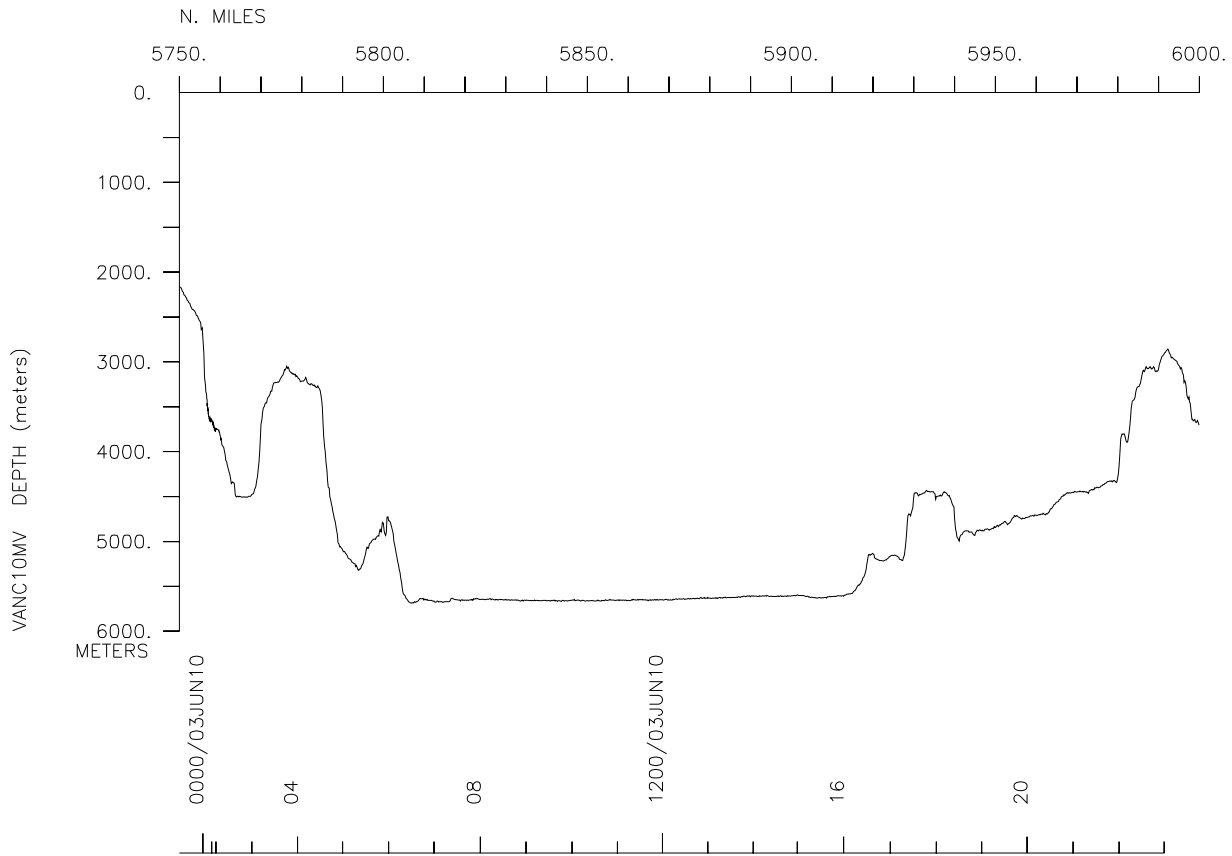
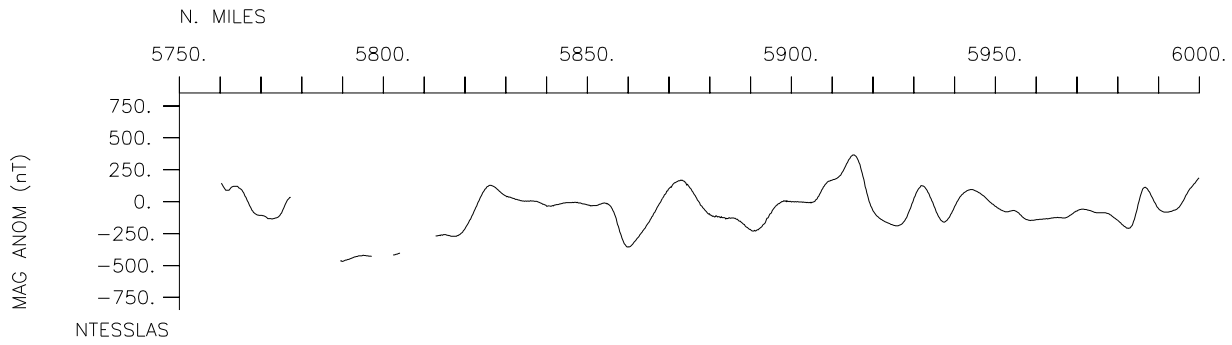
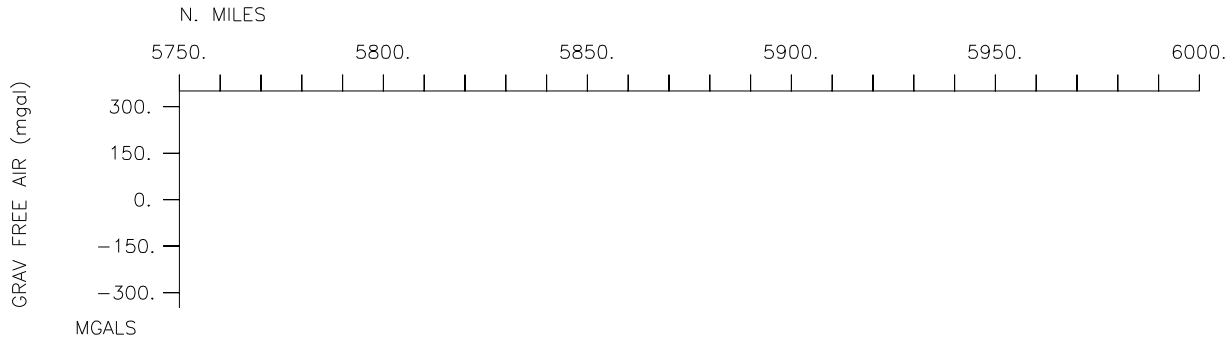


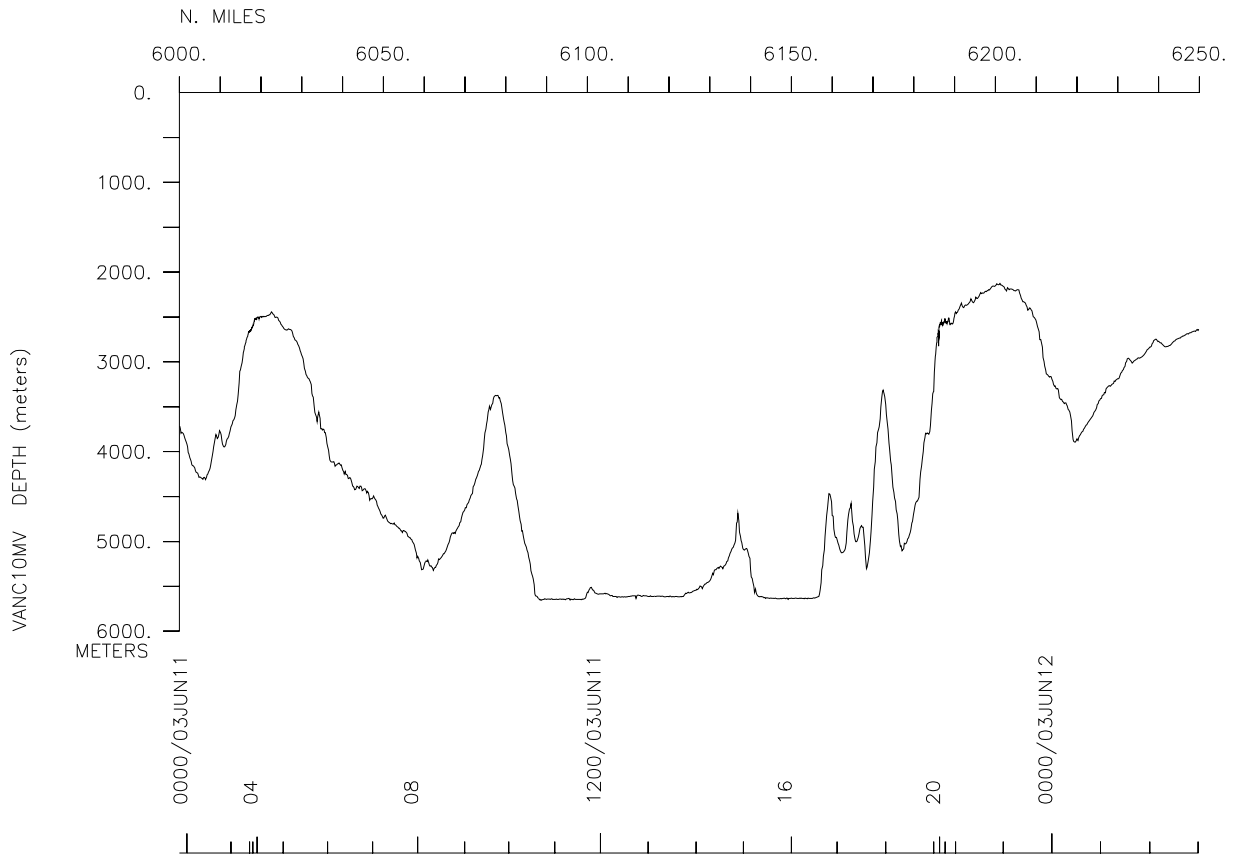
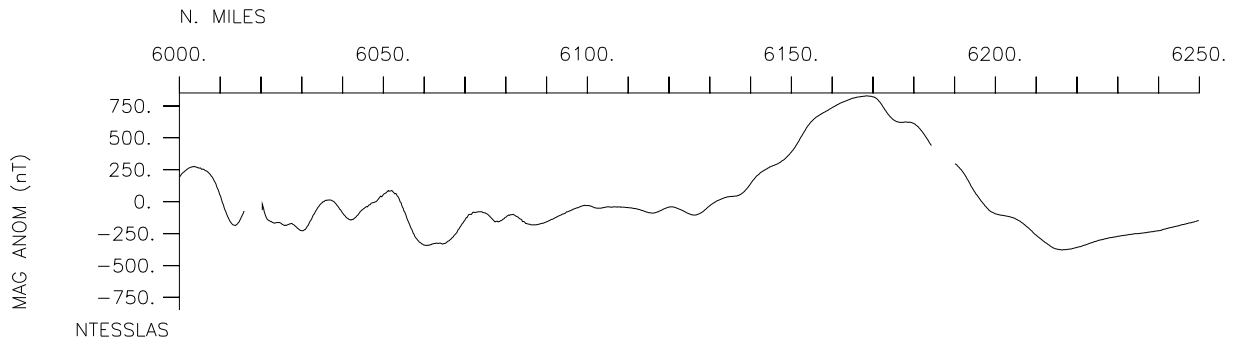
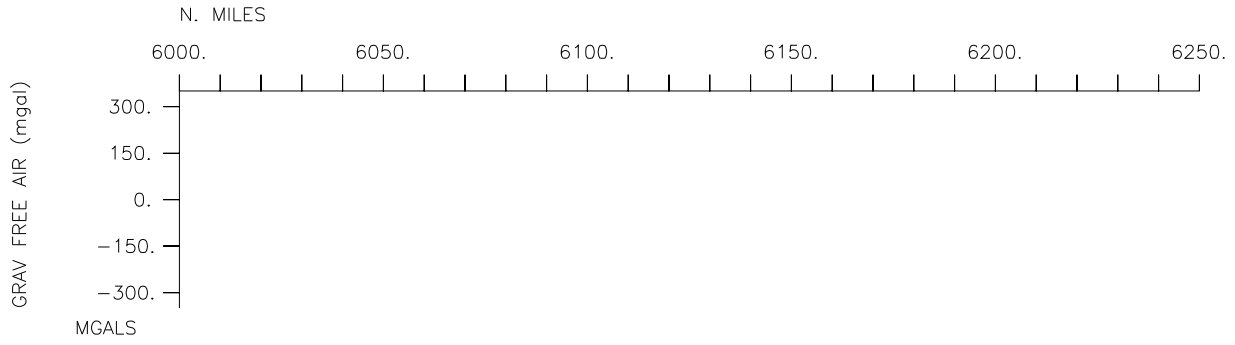


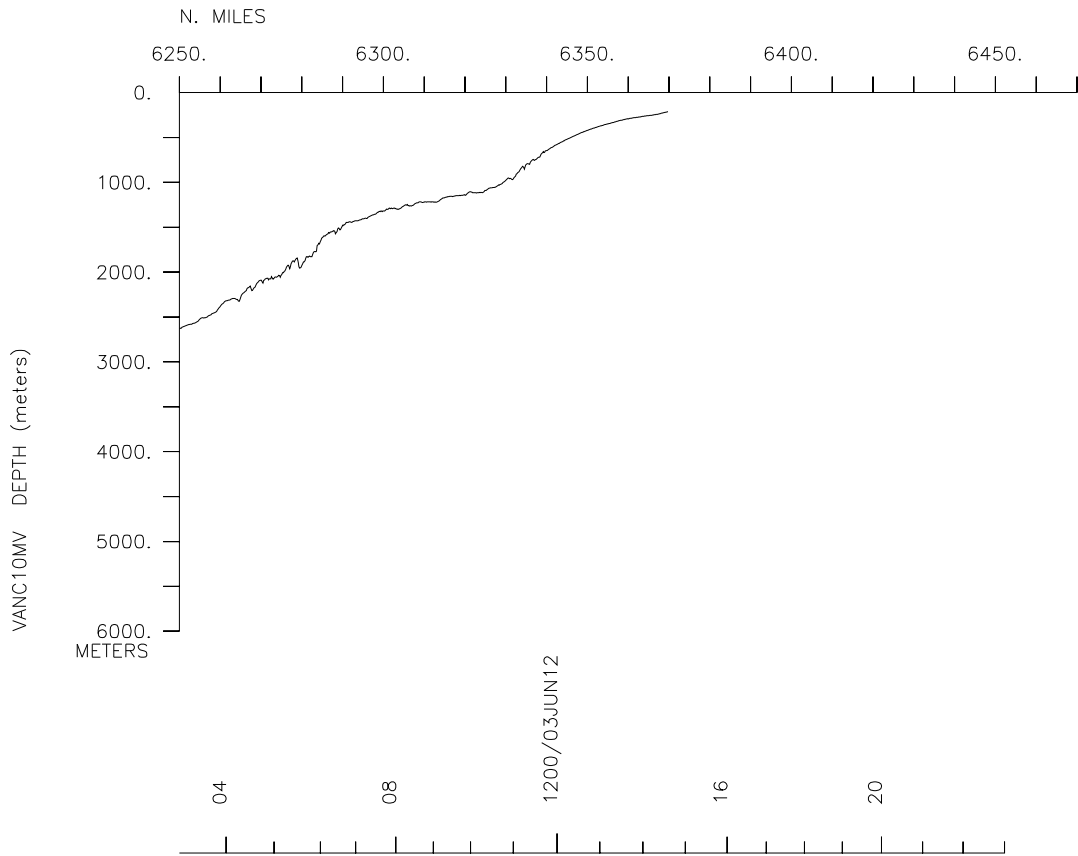
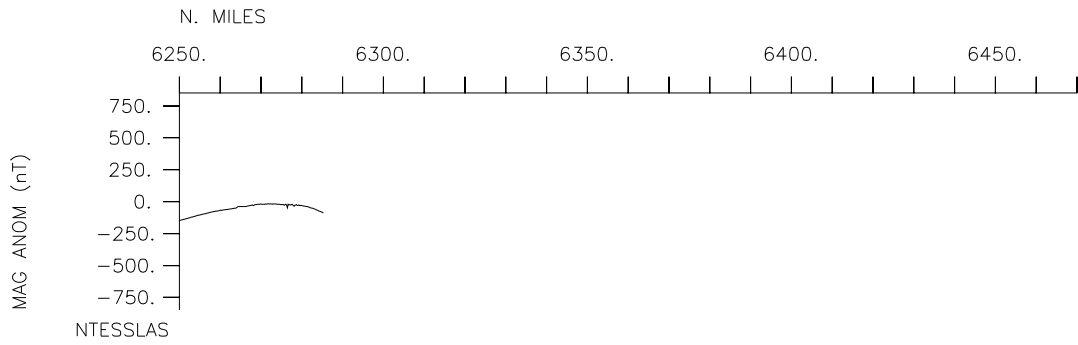
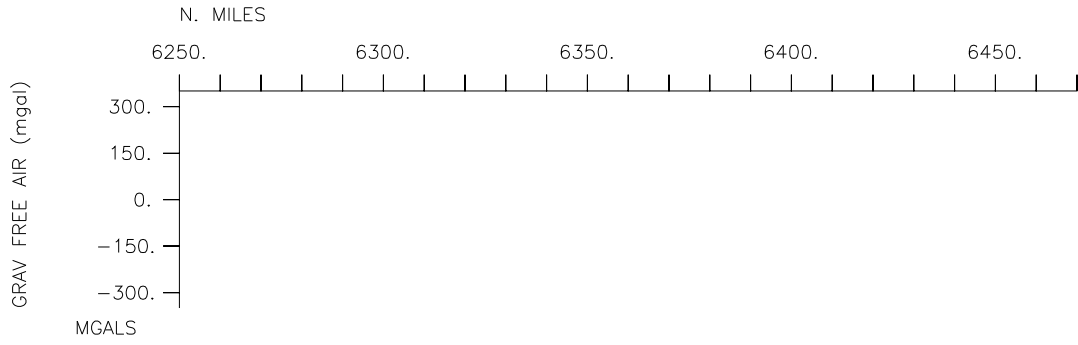












**** Ports ****

```
0801 150503    LGPT B Cape Town, So. Africa    33-54.00S  18-26.00E f VANC10MV
0400 130603    LGPT E Port Hedland, Australia  20-18.00S  118-35.00E f VANC10MV

0418 070603    LGSS B Cocos-Keeling Is.,Aus.   12-05.00S  96-54.00W f VANC10MV
0518 070603    LGSS E Cocos-Keeling Is.,Aus.   12-05.00S  96-54.00W f VANC10MV
```

**** Personnel ****

```
# *****NAME***** *****TITLE***** *****AFFILIATION***** **CRID**
#-----
PECS IGPP Blackman, D.           Chief Scientist      Scripps Institution VANC10MV
PESP SIO De Flon, C.             Scientist            Scripps Institution VANC10MV
PEST SIO Goetze, E.             Grad student        Scripps Institution VANC10MV
PEST SIO Von Dassow, P.        Grad student        Scripps Institution VANC10MV
PESP UWA Mercer, J.            Scientist            Univ. of Washington VANC10MV
PESP UWA Karig, F.             Scientist            Univ. of Washington VANC10MV
PESP UWA Andrew, R.            Scientist            Univ. of Washington VANC10MV
PESP UWA Gullings, L.          Scientist            Univ. of Washington VANC10MV
PESP SIX Jenkins, S.           Scientist            U.S. Navy           VANC10MV
PESP FNC Not, F.               Scientist            France               VANC10MV
PESP SIX Massana, R.           Scientist            Spain               VANC10MV
PEST FNC Karlsekind, P.        Student             France               VANC10MV
PEST SWZ Polet, S.             Student             Switzerland          VANC10MV
PERT STS Wilson, R.            Resident Tech       Scripps Institution VANC10MV
PECT SCG Foley, S.             Computer Tech       Scripps Institution VANC10MV
PECT SCG French, W.            Computer Tech       Scripps Institution VANC10MV
```

**** NOTES ****

#An 'X' in the (B)egin/(E)nd column following the sample code indicates no sample or data recovered. A 'C' indicates continuation of data collection #from before the beginning or after the end of a particular leg, (moored #bottom instruments, for example.) The number appearing in the columns #between the sample identifier and the disposition code, for many sample #entries, is the water depth in corrected meters.

```
#GMT DDMYY      SAMP B SAMPLE          DISP          p CRUISE
#TIME DATE    TZ CODE E IDENTIFIER      CODE LATITUDE  LONGITUDE    c LEG-SHIP
#-----
```

**** Underway Data Curator - Shipboard Technical Support Group ext.41899 ****
 **** Digital Data Curator - Geological Data Center, S.P. Miller, ext.41898 ****

**** MultiBeam Data (vertical beam and side scan) ****

```
1026 150503    0 MBSR B multibeam data          GDC  34-06.61S  18-13.00E g VANC10MV
2355 120603    0 MBSR E multibeam data          GDC  20-03.37S  118-32.84E g VANC10MV
```

**** Digital Magnetism (Earth Total Field) ****

```
0855 190503    0 MGDD B digital magnetism       GDC  34-37.99S  35-02.74E g VANC10MV
0604 120603    0 MGDD E digital magnetism       GDC  17-49.21S  116-30.56E g VANC10MV
```

**** Acoustic Doppler Current Profiler ****

```
1026 150503    0 ADCP B Current measure.        GDC  34-06.61S  18-13.00E g VANC10MV
2355 120603    0 ADCP E Current measure.        GDC  20-03.37S  118-32.84E g VANC10MV
```

#GMT	DDMMYY	SAMP	B	SAMPLE	DISP				p	CRUISE
#TIME	DATE	TZ	CODE	E IDENTIFIER	CODE	LATITUDE	LONGITUDE		c	LEG-SHIP
#-----	---	-----	---	-----	---	-----	-----	-----	-	-----
*** Dredges ***										
0237	040603	0	DRRO	B DREDGE 98	3142M	GCR	14-37.50S	87-38.99E	g	VANC10MV
0429	040603	0	DRRO	E DREDGE 98	3066M	GCR	14-37.95S	87-38.60E	g	VANC10MV
*** Hydrocasts ***										
1206	160503	0	TDCT	B 24BOTTLES		SIO	35-03.03S	23-44.28E	g	VANC10MV
1309	160503	0	TDCT	E 24BOTTLES		SIO	35-03.03S	23-44.28E	g	VANC10MV
1930	160503	0	TDCT	B 24BOTTLES		SIO	35-03.06S	24-34.36E	g	VANC10MV
2004	160503	0	TDCT	E 24BOTTLES		SIO	35-03.33S	24-33.09E	g	VANC10MV
1032	180503	0	TDCT	B 24BOTTLES		SIO	34-49.62S	32-02.15E	g	VANC10MV
1149	180503	0	TDCT	E 24BOTTLES		SIO	34-49.62S	32-02.15E	g	VANC10MV
1930	190503	0	TDCT	B 24BOTTLES		SIO	34-23.10S	37-23.93E	g	VANC10MV
2057	190503	0	TDCT	E 24BOTTLES		SIO	34-21.28S	37-40.95E	g	VANC10MV
1341	210503	0	TDCT	B 24BOTTLES		SIO	33-17.90S	45-21.74E	g	VANC10MV
1449	210503	0	TDCT	E 24BOTTLES		SIO	33-17.90S	45-21.73E	g	VANC10MV
1412	230503	0	TDCT	B 24BOTTLES		SIO	31-49.64S	52-36.60E	g	VANC10MV
1520	230503	0	TDCT	E 24BOTTLES		SIO	31-49.64S	52-36.60E	g	VANC10MV
0836	250503	0	TDCT	B 24BOTTLES		SIO	29-51.23S	59-50.78E	g	VANC10MV
0942	250503	0	TDCT	E 24BOTTLES		SIO	29-51.22S	59-50.78E	g	VANC10MV
0208	290503	0	TDCT	B 24BOTTLES		SIO	22-05.10S	72-44.54E	g	VANC10MV
0315	290503	0	TDCT	E 24BOTTLES		SIO	22-05.10S	72-44.54E	g	VANC10MV
1348	300503	0	TDCT	B 24BOTTLES		SIO	19-44.82S	77-59.98E	g	VANC10MV
1514	300503	0	TDCT	E 24BOTTLES		SIO	19-44.73S	78-00.14E	g	VANC10MV
0706	010603	0	TDCT	B 24BOTTLES		SIO	17-10.55S	83-40.51E	g	VANC10MV
0816	010603	0	TDCT	E 24BOTTLES		SIO	17-10.55S	83-40.51E	g	VANC10MV
1954	040603	0	TDCT	B 24BOTTLES		SIO	13-57.78S	89-55.99E	g	VANC10MV
2103	040603	0	TDCT	E 24BOTTLES		SIO	13-57.77S	89-55.99E	g	VANC10MV
2300	060603	0	TDCT	B 24BOTTLES		SIO	12-13.02S	96-47.05E	g	VANC10MV
2330	060603	0	TDCT	E 24BOTTLES		SIO	12-13.03S	96-47.06E	g	VANC10MV
0136	090603	0	TDCT	B 24BOTTLES		SIO	13-11.88S	104-41.66E	g	VANC10MV
0210	090603	0	TDCT	E 24BOTTLES		SIO	13-11.88S	104-41.66E	g	VANC10MV
0152	110603	0	TDCT	B 24BOTTLES		SIO	14-29.52S	113-27.26E	g	VANC10MV
0216	110603	0	TDCT	E 24BOTTLES		SIO	14-29.53S	113-27.26E	g	VANC10MV
1919	110603	0	TDCT	B 24BOTTLES		SIO	16-34.73S	115-22.54E	g	VANC10MV
1948	110603	0	TDCT	E 24BOTTLES		SIO	16-34.73S	115-22.54E	g	VANC10MV

#GMT	DDMMYY	SAMP	B	SAMPLE	DISP					p	CRUISE
#TIME	DATE	TZ	CODE	E IDENTIFIER	CODE	LATITUDE	LONGITUDE			c	LEG-SHIP
#-----	---	-----	-----	-----	-----	-----	-----	-----	-----	-----	-----
*** Open Nets ***											
1322	160503	0	ONBG	B BONGO NETS TO 1300M	SIO	35-03.04S	23-44.30E	g			VANC10MV
1436	160503	0	ONBG	E BONGO NETS TO 1300M	SIO	35-04.12S	23-43.63E	g			VANC10MV
2107	160503	0	ONBG	B BONGO NETS	SIO	35-03.87S	24-30.46E	g			VANC10MV
2238	160503	0	ONBG	E BONGO NETS	SIO	35-05.25S	24-27.66E	g			VANC10MV
1430	180503	0	ONBG	B BONGO NETS	SIO	34-49.61S	32-02.14E	g			VANC10MV
1602	180503	0	ONBG	E BONGO NETS	SIO	34-50.03S	32-03.83E	g			VANC10MV
0458	190503	0	ONBG	B BONGO NETS	SIO	34-40.00S	34-45.56E	g			VANC10MV
0630	190503	0	ONBG	E BONGO NETS	SIO	34-41.10S	34-43.81E	g			VANC10MV
2227	190503	0	ONBG	B BONGO NETS	SIO	34-21.36S	37-41.55E	g			VANC10MV
2357	190503	0	ONBG	E BONGO NETS	SIO	34-21.74S	37-43.50E	g			VANC10MV
1417	200503	0	ONBG	B BONGO NETS	SIO	34-03.28S	40-30.43E	g			VANC10MV
1548	200503	0	ONBG	E BONGO NETS	SIO	34-02.31S	40-32.30E	g			VANC10MV
1501	210503	0	ONBG	B BONGO NETS	SIO	33-17.87S	45-21.80E	g			VANC10MV
1629	210503	0	ONBG	E BONGO NETS	SIO	33-16.51S	45-22.23E	g			VANC10MV
1407	220503	0	ONBG	B BONGO NETS	SIO	32-50.84S	47-44.11E	g			VANC10MV
1530	220503	0	ONBG	E BONGO NETS	SIO	32-49.76S	47-45.11E	g			VANC10MV
1541	230503	0	ONBG	B BONGO NETS	SIO	31-49.49S	52-36.85E	g			VANC10MV
1702	230503	0	ONBG	E BONGO NETS	SIO	31-47.76S	52-37.64E	g			VANC10MV
1223	240503	0	ONBG	B BONGO NETS	SIO	30-51.39S	56-17.85E	g			VANC10MV
1351	240503	0	ONBG	E BONGO NETS	SIO	30-49.59S	56-18.53E	g			VANC10MV
0950	250503	0	ONBG	B BONGO NETS	SIO	29-51.08S	59-50.70E	g			VANC10MV
1120	250503	0	ONBG	E BONGO NETS	SIO	29-49.36S	59-48.95E	g			VANC10MV
0656	260503	0	ONBG	B BONGO NETS	SIO	28-44.11S	63-24.07E	g			VANC10MV
0831	260503	0	ONBG	E BONGO NETS	SIO	28-45.72S	63-21.98E	g			VANC10MV
0332	280503	0	ONBG	B BONGO NETS	SIO	23-35.34S	69-00.85E	g			VANC10MV
0515	280503	0	ONBG	E BONGO NETS	SIO	23-35.43S	69-02.69E	g			VANC10MV
0430	290503	0	ONBG	B BONGO NETS	SIO	22-05.10S	72-44.55E	g			VANC10MV
0616	290503	0	ONBG	E BONGO NETS	SIO	22-05.72S	72-45.97E	g			VANC10MV
2015	290503	0	ONBG	B BONGO NETS	SIO	21-02.41S	75-08.18E	g			VANC10MV
2200	290503	0	ONBG	E BONGO NETS	SIO	21-03.10S	75-10.11E	g			VANC10MV
1523	300503	0	ONBG	B BONGO NETS	SIO	19-44.76S	78-00.42E	g			VANC10MV
1713	300503	0	ONBG	E BONGO NETS	SIO	19-44.50S	78-03.13E	g			VANC10MV
1158	310503	0	ONBG	B BONGO NETS	SIO	18-26.05S	80-55.09E	g			VANC10MV
1345	310503	0	ONBG	E BONGO NETS	SIO	18-25.97S	80-56.95E	g			VANC10MV
0918	010603	0	ONBG	B BONGO NETS	SIO	17-10.55S	83-40.51E	g			VANC10MV
1103	010603	0	ONBG	E BONGO NETS	SIO	17-10.69S	83-42.07E	g			VANC10MV
0603	020603	0	ONBG	B BONGO NETS	SIO	15-45.52S	86-46.69E	g			VANC10MV
0735	020603	0	ONBG	E BONGO NETS	SIO	15-44.80S	86-48.32E	g			VANC10MV

#GMT	DDMMYY	SAMP	B	SAMPLE	DISP				p	CRUISE
#TIME	DATE	TZ	CODE	E IDENTIFIER	CODE	LATITUDE	LONGITUDE		c	LEG-SHIP
#-----	---	-----	---	-----	---	-----	-----	-----	-	-----
2112	040603	0	ONBG	B BONGO NETS	SIO	13-57.75S	89-56.07E	g		VANC10MV
2250	040603	0	ONBG	E BONGO NETS	SIO	13-57.24S	89-57.67E	g		VANC10MV
1105	050603	0	ONBG	B BONGO NETS	SIO	13-29.66S	91-46.33E	g		VANC10MV
1244	050603	0	ONBG	E BONGO NETS	SIO	13-28.88S	91-47.74E	g		VANC10MV
0504	060603	0	ONBG	B BONGO NETS	SIO	12-51.77S	94-17.09E	g		VANC10MV
0641	060603	0	ONBG	E BONGO NETS	SIO	12-51.97S	94-18.72E	g		VANC10MV
0022	070603	0	ONBG	B BONGO NETS	SIO	12-13.08S	96-47.08E	g		VANC10MV
0200	070603	0	ONBG	E BONGO NETS	SIO	12-14.21S	96-49.65E	g		VANC10MV
2227	080603	0	ONBG	B BONGO NETS	SIO	13-12.71S	104-39.36E	g		VANC10MV
0013	090603	0	ONBG	E BONGO NETS	SIO	13-11.91S	104-41.56E	g		VANC10MV
0015	100603	0	ONBG	B BONGO NETS	SIO	13-51.15S	109-02.49E	g		VANC10MV
0154	100603	0	ONBG	E BONGO NETS	SIO	13-50.46S	109-04.29E	g		VANC10MV
0223	110603	0	ONBG	B BONGO NETS	SIO	14-29.50S	113-27.36E	g		VANC10MV
0408	110603	0	ONBG	E BONGO NETS	SIO	14-28.77S	113-29.16E	g		VANC10MV
1957	110603	0	ONBG	B BONGO NETS	SIO	16-34.79S	115-22.68E	g		VANC10MV
2137	110603	0	ONBG	E BONGO NETS	SIO	16-35.65S	115-24.89E	g		VANC10MV

*** Seismic Refraction Stations ***

1326	200503	0	SRXX	GLASS SPHERE	IMPLO.	SIO	34-03.38S	40-30.16E	g	VANC10MV
1348	230503	0	SRXX	GLASS SPHERE	IMPLO.	SIO	31-49.64S	52-36.59E	g	VANC10MV
1023	240503	0	SRXX	GLASS SPHERE	IMPLO.	SIO	30-52.23S	56-19.05E	g	VANC10MV
0619	260503	0	SRXX	GLASS SPHERE	IMPLO.	SIO	28-44.11S	63-24.10E	g	VANC10MV
0348	290503	0	SRXX	GLASS SPHERE	IMPLO.	SIO	22-05.10S	72-44.54E	g	VANC10MV
1121	310503	0	SRXX	GLASS SPHERE	IMPLO.	SIO	18-26.05S	80-55.09E	g	VANC10MV
0846	010603	0	SRXX	GLASS SPHERE	IMPLO.	SIO	17-10.56S	83-40.51E	g	VANC10MV
0109	090603	0	SRXX	GLASS SPHERE	IMPLO.	SIO	13-11.88S	104-41.66E	g	VANC10MV
1352	200503	0	SRXX	SUS MK94	3000'A1	SIO	34-03.38S	40-30.16E	g	VANC10MV
1402	200503	0	SRXX	SUS MK94	2000'A1	SIO	34-03.38S	40-30.16E	g	VANC10MV
1333	220503	0	SRXX	SUS MK94	2000'A2	SIO	32-51.16S	47-44.16E	g	VANC10MV
1337	220503	0	SRXX	SUS MK94	3000'A2	SIO	32-51.15S	47-44.14E	g	VANC10MV
1053	240503	0	SRXX	SUS MK94	2000'A4	SIO	30-52.23S	56-19.05E	g	VANC10MV
1058	240503	0	SRXX	SUS MK94	3000'A4	SIO	30-52.22S	56-19.05E	g	VANC10MV
0645	260503	0	SRXX	SUS MK94	3000'A5	SIO	28-44.11S	63-24.10E	g	VANC10MV
0653	260503	0	SRXX	SUS MK94	2000'A5	SIO	28-44.11S	63-24.10E	g	VANC10MV
0418	290503	0	SRXX	SUS MK94	2000'A6	SIO	22-05.10S	72-44.54E	g	VANC10MV
0424	290503	0	SRXX	SUS MK94	3000'A6	SIO	22-05.10S	72-44.53E	g	VANC10MV
1148	310503	0	SRXX	SUS MK94	3000'A7	SIO	18-26.05S	80-55.09E	g	VANC10MV
1158	310503	0	SRXX	SUS MK94	2000'A7	SIO	18-26.05S	80-55.09E	g	VANC10MV
0912	010603	0	SRXX	SUS MK94	2000'A8	SIO	17-10.55S	83-40.51E	g	VANC10MV
0918	010603	0	SRXX	SUS MK94	2000'A8	SIO	17-10.55S	83-40.51E	g	VANC10MV
1046	050603	0	SRXX	SUS MK94	3000'A9	SIO	13-29.67S	91-46.32E	g	VANC10MV
1053	050603	0	SRXX	SUS MK94	2000'A9	SIO	13-29.67S	91-46.32E	g	VANC10MV
0353	070603	0	SRXX	SUS MK94	3000'A10	SIO	12-12.80S	96-47.80E	g	VANC10MV
0400	070603	0	SRXX	SUS MK94	2000'A10	SIO	12-12.80S	96-47.80E	g	VANC10MV
0033	090603	0	SRXX	SUS MK94		SIO	13-11.88S	104-41.66E	g	VANC10MV

*** Seismic Station ***

0420	220503	0	SRXX	B ATOC DEPLOY	UWA	32-51.49S	47-44.58E	g		VANC10MV
1320	220503	0	SRXX	E ATOC DEPLOY	UWA	32-51.22S	47-44.21E	g		VANC10MV

*** Expendable Bathythermogrphs ***

1536	190503	0	BTXP	MK21 # 30	Fast_Deep	GDC	34-28.53S	36-32.44E	g	VANC10MV
1244	200503	0	BTXP	MK21 # 31	Fast_Deep	GDC	34-03.51S	40-28.94E	g	VANC10MV
0954	020603	0	BTXP	MK21 # 32	Fast_Deep	GDC	15-35.12S	87-08.87E	g	VANC10MV
0654	060603	0	BTXP	MK21 # 33	Fast_Deep	GDC	12-51.98S	94-18.89E	g	VANC10MV

1253	070603	0	BTXP	MK21	#	34	Fast_Deep	GDC	12-15.01S	98-05.73E	g	VANC10MV
0507	090603	0	BTXP	MK21	#	35	Fast_Deep	GDC	13-17.99S	105-15.67E	g	VANC10MV
1603	100603	0	BTXP	MK21	#	36	Fast_Deep	GDC	14-14.26S	111-41.35E	g	VANC10MV
0616	120603	0	BTXP	MK21	#	38	Fast_Deep	GDC	17-50.89S	116-32.10E	g	VANC10MV
0717	120603	0	BTXP	MK21	#	39	Fast_Deep	GDC	17-57.42S	116-38.10E	g	VANC10MV