

Agisoft PhotoScan

Processing Report
06 November 2014



Survey Data

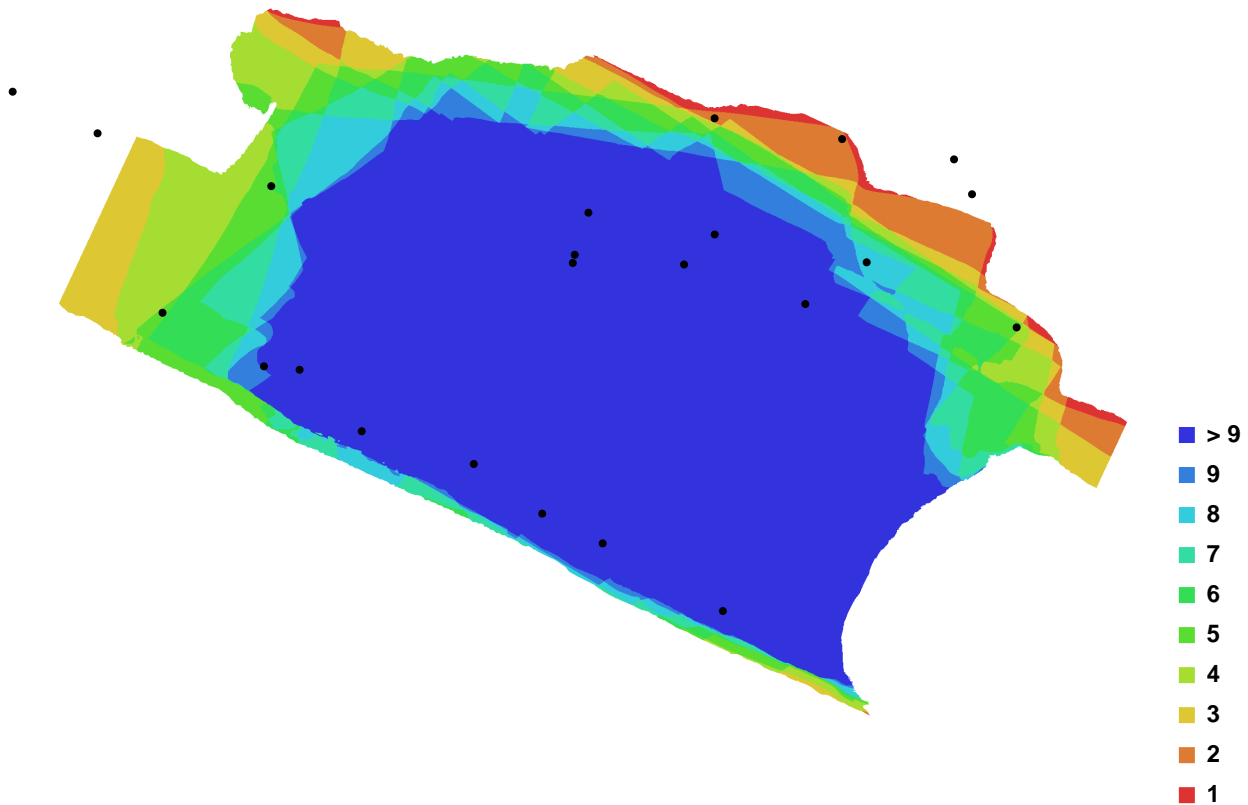


Fig. 1. Camera locations and image overlap.

Number of images:	24	Camera stations:	23
Flying altitude:	1.72894 m	Tie-points:	116592
Ground resolution:	0.000369505 m/pix	Projections:	370566
Coverage area:	5.22179e-006 sq km	Error:	0.901027 pix

Camera Model	Resolution	Focal Length	Pixel Size	Precalibrated
Canon EOS M (18 mm)	5184 x 3456	18 mm	4.384 x 4.384 um	No

Table. 1. Cameras.

Digital Elevation Model

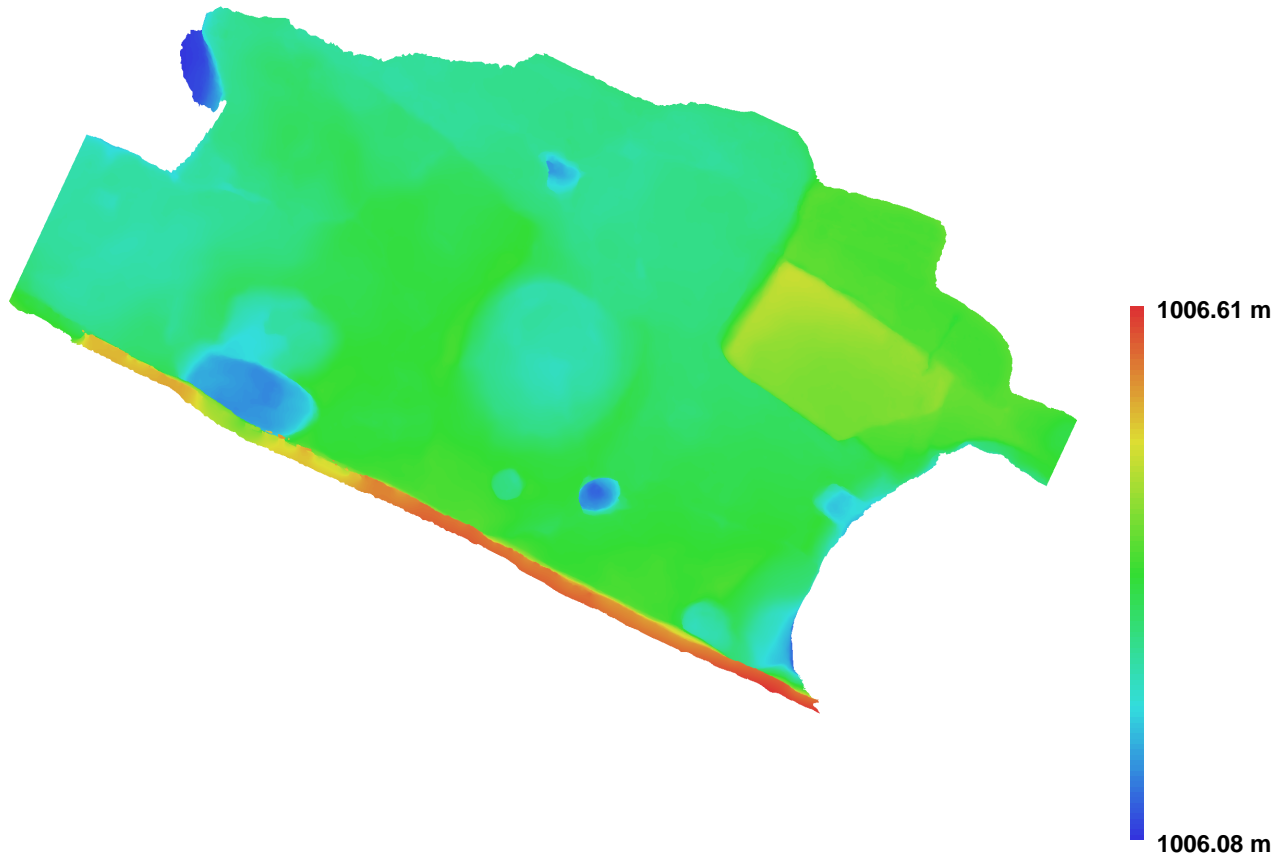


Fig. 2. Reconstructed digital elevation model.

Resolution: 0.00147802 m/pix
Point density: 457762 points per sq m