

Agisoft PhotoScan

Processing Report

21 July 2015



Survey Data

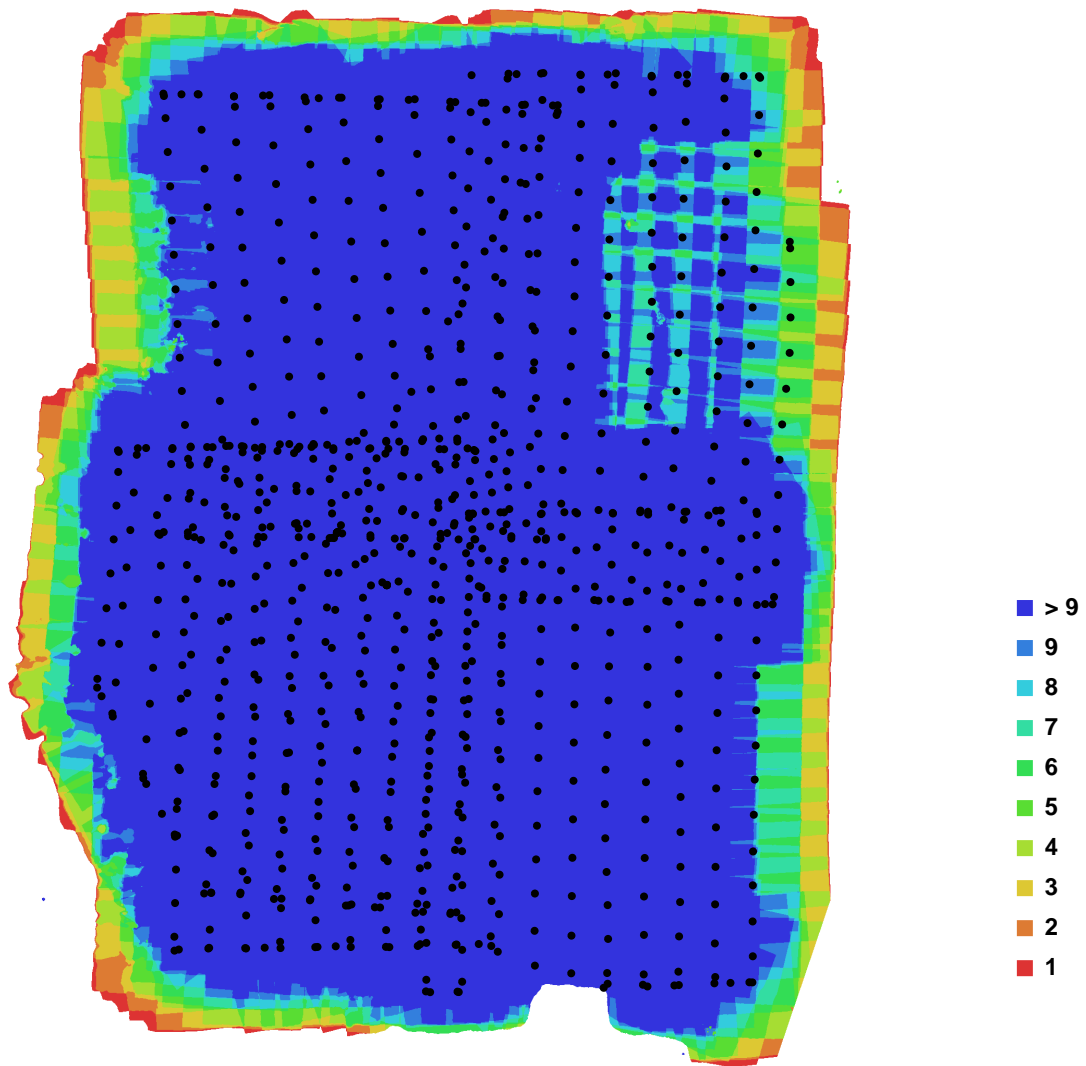


Fig. 1. Camera locations and image overlap.

Number of images:	937	Camera stations:	930
Flying altitude:	63.4007 m	Tie-points:	111223
Ground resolution:	0.024552 m/pix	Projections:	430078
Coverage area:	0.367653 sq km	Error:	2.1399 pix

Camera Model	Resolution	Focal Length	Pixel Size	Precalibrated
FC300X (3.61 mm)	4000 x 3000	3.61 mm	1.56192 x 1.56192 um	No

Table. 1. Cameras.

Camera Calibration

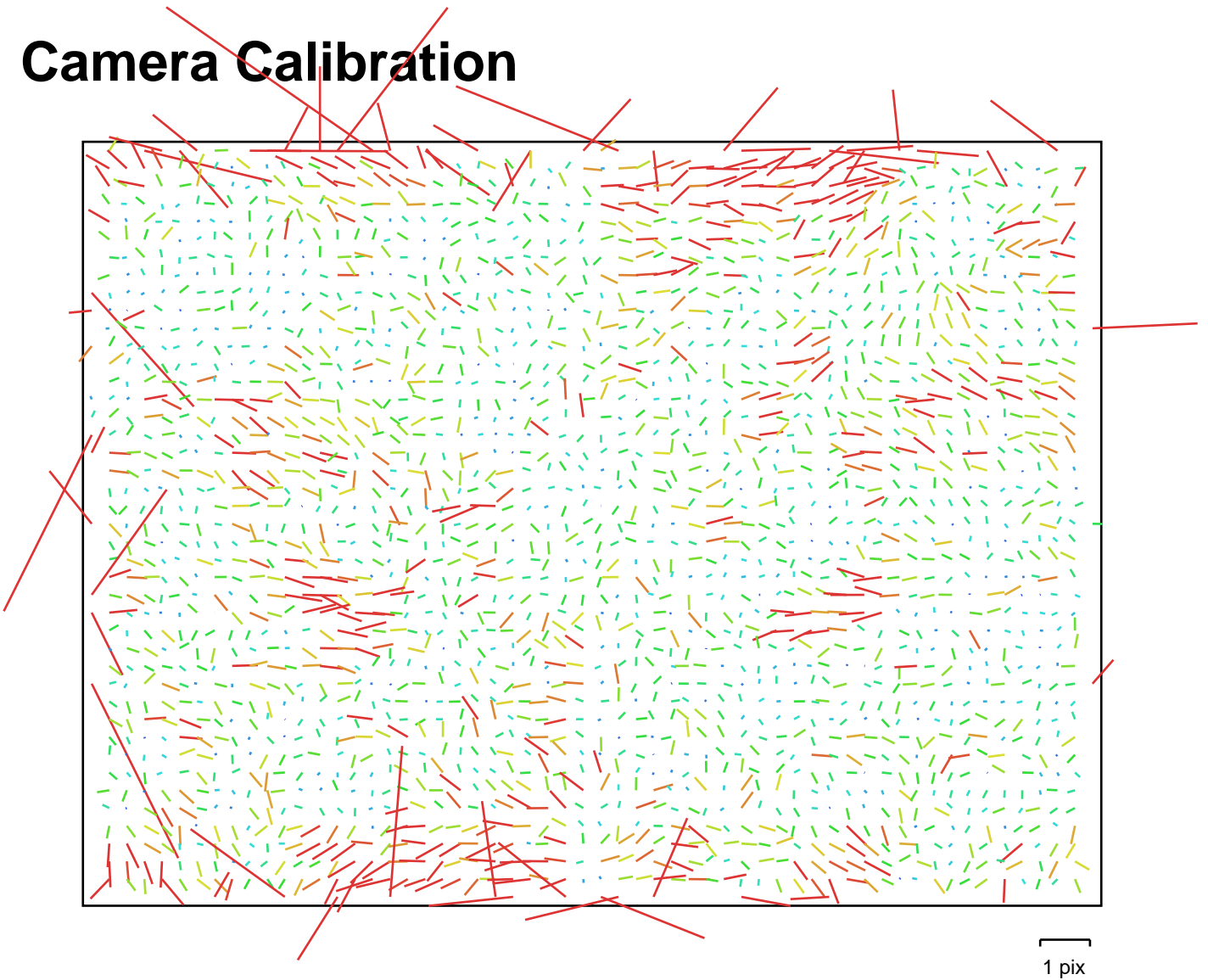


Fig. 2. Image residuals for FC300X (3.61 mm).

FC300X (3.61 mm)

Type:	Frame	K1:	-0.00710971
Fx:	2191.6	K2:	0.00703351
Fy:	2197.63	K3:	0.00322715
Cx:	2002.1	K4:	0
Cy:	1508.93	P1:	0.000331041
Skew:	-1.95466	P2:	-0.000278255

Ground Control Points

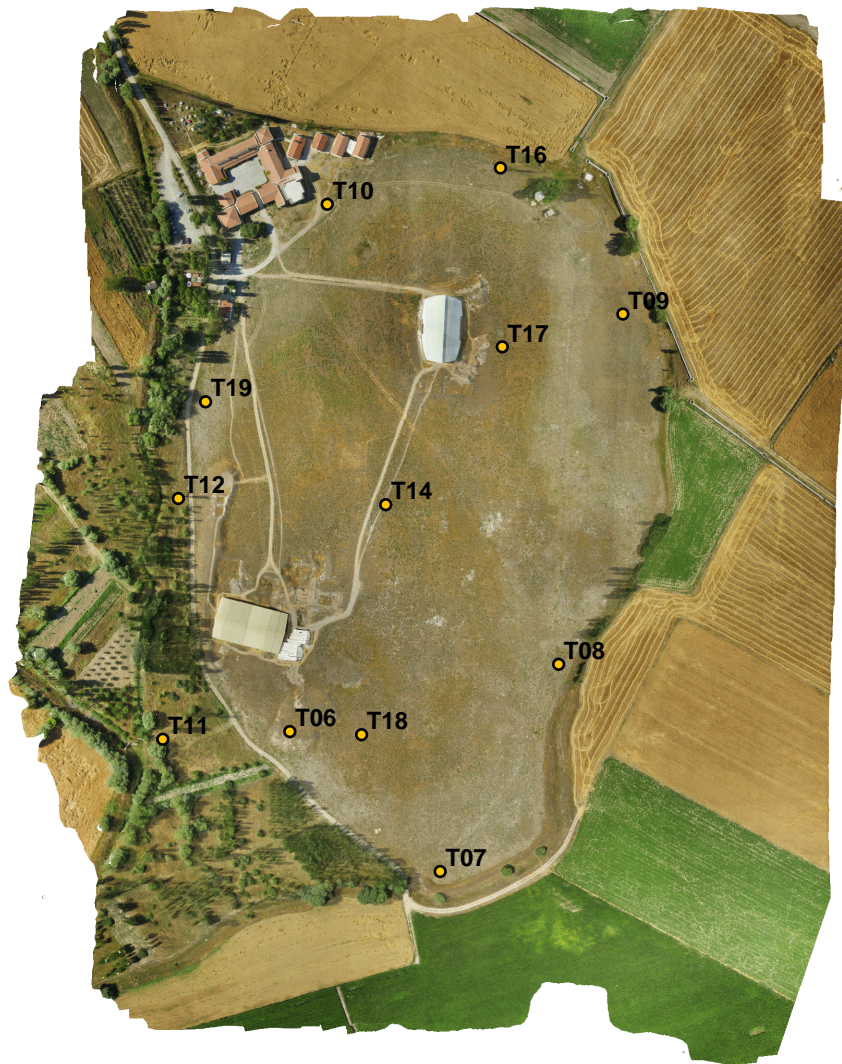


Fig. 3. GCP locations.

Label	X error (m)	Y error (m)	Z error (m)	Error (m)	Projections	Error (pix)
T06	-0.328415	-0.310291	0.304135	0.544642	22	0.343728
T07	0.237403	0.135420	0.011895	0.273569	41	0.229699
T08	0.053716	-0.012877	-0.013203	0.056794	18	0.089980
T09	-0.314257	0.012182	0.060250	0.320212	10	0.339180
T10	0.610464	0.174250	-0.099869	0.642653	12	0.333163
T11	0.264254	0.122303	-0.110881	0.311581	21	0.245611
T12	-0.265313	-0.188340	0.094586	0.338835	51	0.188434
T14	-0.021177	-0.527246	0.038752	0.529092	47	0.289618
T16	-0.076205	0.358676	0.088212	0.377144	27	0.227438
T17	-0.148865	0.306555	-0.160582	0.376727	22	0.398859

Label	X error (m)	Y error (m)	Z error (m)	Error (m)	Projections	Error (pix)
T18	-0.491688	0.142720	-0.211536	0.553962	28	0.351506
T19	0.490159	-0.208240	-0.004473	0.532579	28	0.227221
Total	0.327767	0.251673	0.131497	0.433661	327	0.272111

Table. 2. Control points.

Digital Elevation Model

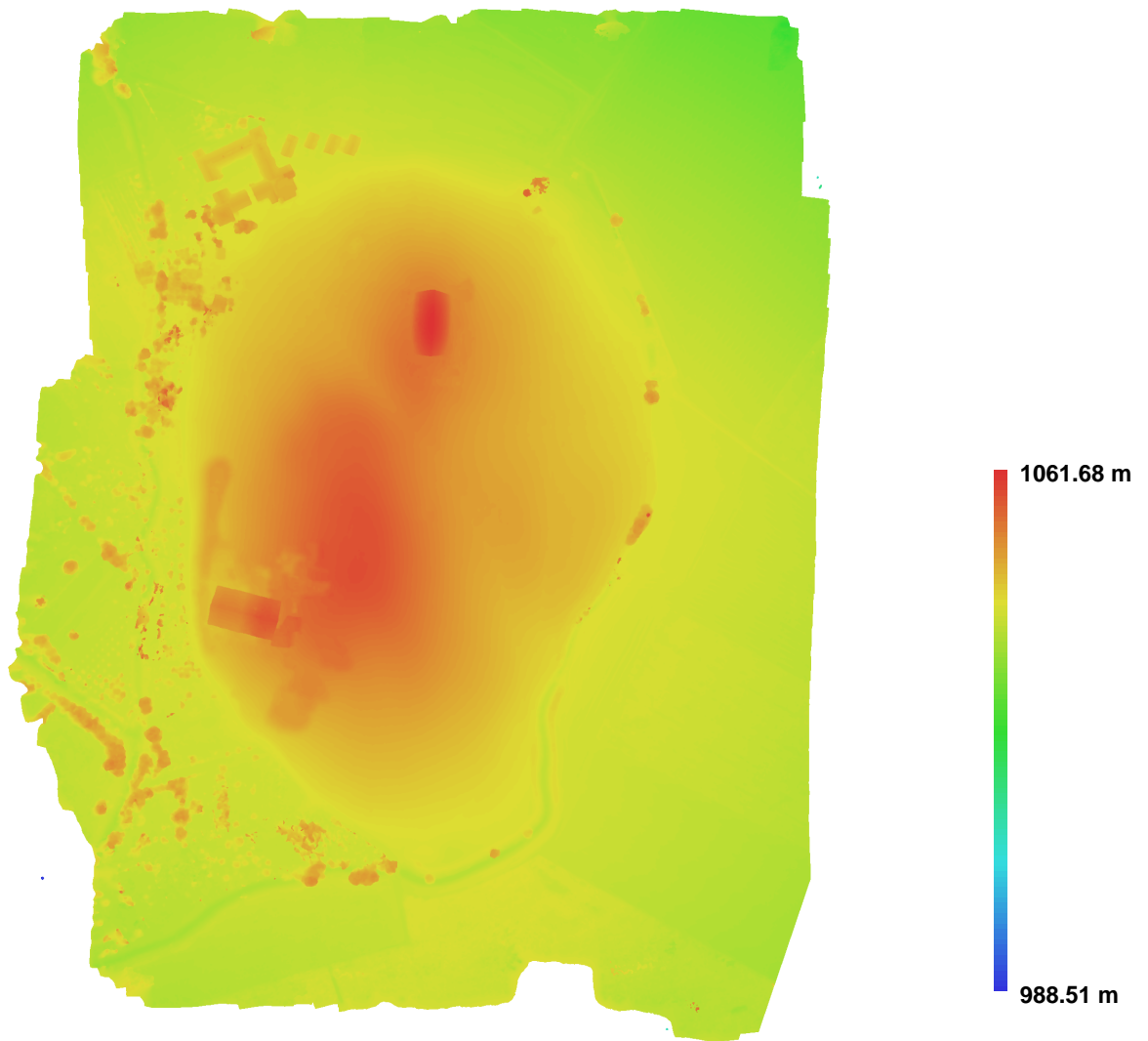


Fig. 4. Reconstructed digital elevation model.

Resolution: 0.196416 m/pix
Point density: 25.9207 points per sq m