

PICTURESQUE

DELMAR



SAN DIEGO COUNTY  
CALIFORNIA.



350-  
REBY  
d

# Picturesque Del Mar

*San Diego County, California*

*Photo-Gravures*

THE ALBERTYPE COMPANY,  
BROOKLYN, N. Y.

PUBLISHED FOR  
SOUTH COAST LAND CO.,  
H. W. KELLER, PRES.  
W. G. KERCKHOFF, VICE-PRES.  
668 PACIFIC ELECTRIC BUILDING,  
LOS ANGELES, CAL.





WHEN you are looking for a home or a camping spot in the summerland of the Pacific, you will be drawn inevitably to Del Mar, "The Picturesque." The reason is that you will find there the perfection of Southern California climate by the shores of the Pacific Ocean, in addition to a dozen other advantages not enjoyed by any other sea-side resort. As you look about, you see westward for half the circle of the horizon the Pacific Ocean, fascinating in its kaleidoscopic color effects. Eastward, far ranges of blue mountains, pine-fringed, girdle the land and join the arching skies. And to north and south the coast line with its red cliffs and snowy surf curves away into blue headlands. From the gentle slopes of the town you command a panorama of cliffs, valley, mountains, ocean and breaking surf that cannot be surpassed.

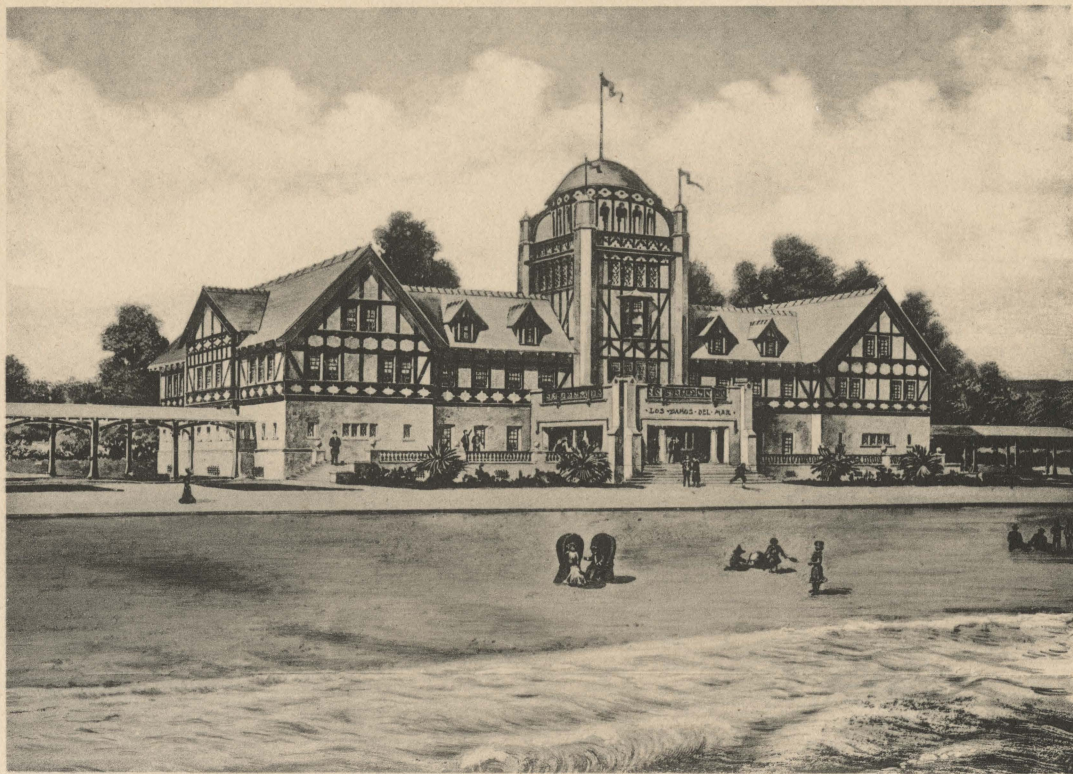
As you linger, the charm of the place grows upon you. There is the beach, a smooth, firm pavement of grey sand, a hundred yards wide at low tide, strewn with moss and winrows of shells, delightful for driving, walking or automobiling. There are the "mussel rocks" a few miles away where mussel bakes are enjoyed and abalones captured at low tide. Near by, the Point of Pines lures you to a cliff climb and a grand view. Here the famous Torrey pines grow in scattered groves. When tired of the ocean you may tramp for miles east of Del Mar in the valleys and canyons which are thickly wooded or broken with wild sandstone gorges where the Torrey pines cling—the home of numerous rabbits and thousands of quail.

For the tired city worker in need of rest and recreation, for the pleasure seeker in quest of unique entertainment, Del Mar asks only a trial. With the finest bath-house on the coast and a tourist hotel with all modern conveniences and artistic features, the traveler is assured a joyful stay. For the home-builder it is the most healthful and artistic of all Southern California suburban residence towns. It is only twenty miles from San Diego or thirty minutes by rail and one hundred miles from Los Angeles, or three hours by rail. It is on the Santa Fe. It has an abundant supply of pure water, sewer system, a power plant to furnish electric lights, bathing, fishing, hunting, beautiful driveways, a rich soil that grows fruits and flowers in profusion—and all under the blue skies of the sunny southland of California!



HOTEL DEL MAR.



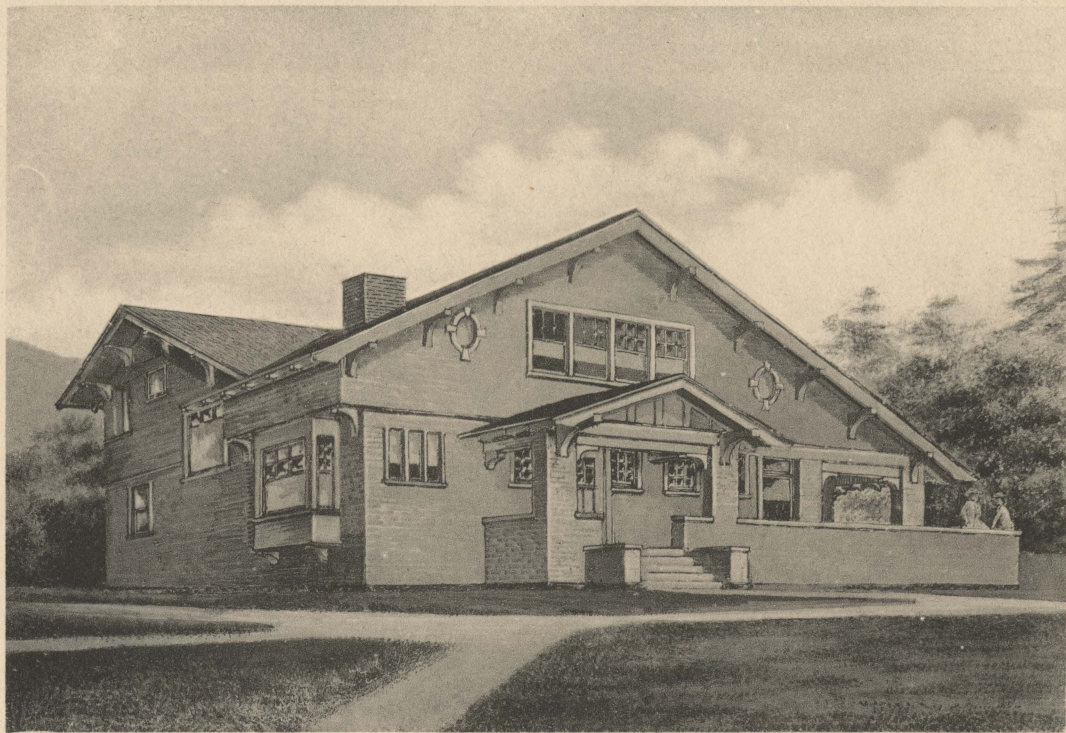


LOS BANOS DEL MAR.



COTTAGE OF MR. H. W. KELLER.





COTTAGE OF MR. WM. G. KERCKHOFF.



DEL MAR BAY.





THE "PACIFIC."



EUCALYPTUS DRIVE.





BEACH SCENE.



SORRENTO POINT.





A DEL MAR DRIVE.



DEVIL'S CANYON.





SHOWING A CLIFF, FLOWER FIELD AND BEACH.



SAN DIEGNITO RIVER AT NORTH END OF BEACH.





TORREY PINE FOREST.





THE BEACH AT LOW TIDE.



