

A MAGIC ISLAND

SANTA CATALINA

GLASS BOTTOM BOAT

WINTER
and
SUMMER

WILMINGTON TRANSPORTATION CO.
222 SOUTH SPRING ST.
LOS ANGELES, CAL.

SUBMARINE SCENE

12 Fathoms Deep
Through the Glass-Bottom Boat



200-POUND BLACK SEA BASS.

A MAGIC ISLAND

SANTA CATALINA

3½ Hours from Los Angeles, Cal.

The Angler's Paradise



ARDLY three hours and a half from Los Angeles, Southern California, is SANTA CATALINA, an island twenty-two miles long, a park in the Pacific, a mountain range at sea; a bit of the world by itself, which in its climate, natural beauties and opportunities for sport, comes as near perfection as one can find. It abounds in beautiful

and lofty mountains, deep gorges, stupendous rock cliffs and precipices. Its south and west coast has the surf and a bracing climate; its north and east is a region of calms, little bays with glass-like surfaces reflecting the rocks and mountains. Avalon, upon the bay of that name, has a climate nearer the ideal than any in America. The winter is the season of verdure. The days are mild and balmy, the nights lack the chill of the mainland, and there is little difference in temperature between day and night. Winter it is in name alone, as the island is then a semi-tropic garden. There is a total lack of malarial taint, Santa Catalina being a natural sanitarium. The summers are equally remarkable. At Avalon a really hot period, as it is understood in the East, is unknown, and from May until November there is a succession of beautiful days without a suspicion of squall or storm of any kind.

Avalon is the fashionable resort of Southern California, and is patronized equally by those who wish to escape the conventionalities of fashionable life. Here are cottages, shops, hotels and boarding houses, while a city of tents affords the lovers of camping out under ideal conditions every opportunity. The Metropole, the principal hotel, up-to-date in every respect, is situated directly on the bay. It has every comfort; a beautiful ball-room and stage, fine parlors, rooms with all the modern conveniences, making it one of the most popular all-the-year-round resorts on the coast.

Avalon is connected with the mainland by the steamers of the Wilmington Transportation Company. For further information, pamphlets, maps, etc., address the Banning Company, 222 South Spring street, Los Angeles, Cal.



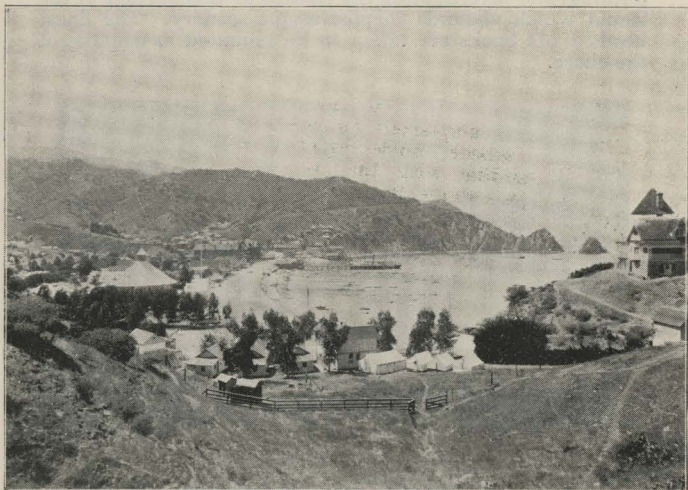
VIEWS OF SANTA CATALINA ISLAND, CALIFORNIA

THE SPORTS AND PASTIMES

Of Santa Catalina are endless, some of which consist of boating, bathing, hunting the wild goat quail shooting, fishing, visiting the ancient townsites, climbing the mountains and trails, taking the wonderful coach ride, making the trip around the island to the jew-fish banks or to the hundred and one places of interest.

FISHING

Santa Catalina is the fisherman's paradise. Here is the home of the jewfish or black sea bass, that attains a weight of 500 lbs., and whose capture always creates an excitement; also the leaping tuna, the king of all game fishes, which ranges from 30 to 200 lbs. These fish are taken with rod



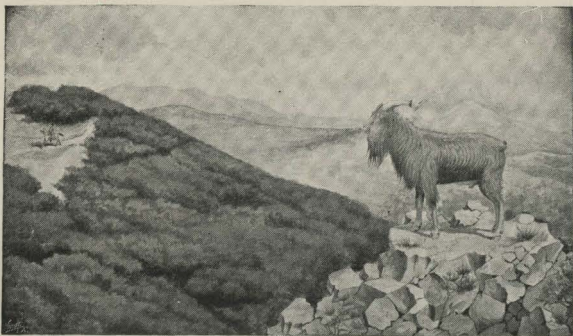
AVALON BAY.

and reel, cuttyhunk line, No. 18, and often give battle for two or three hours before coming to gaff. A 100-pound tuna could tow a 150-pound tarpon and drown it. Here also is found the yellowtail, the salmon of Southern California and one of the gamiest of fishes on a light rod; it attains a weight of sixty pounds. This with the barracuda, rock bass, grouper, whitefish, tuna, albicore and others, constitutes a series of game fishes unequaled in any waters and which attract anglers from far and near.

HUNTING

Santa Catalina abounds in the finest quail shooting in California, the birds being extremely plentiful and afford-

ing fine sport. The California turtle dove, a swift flyer and game bird, can be bagged in good quantities. The upland region of Santa Catalina, the heart of the Cabrillo mountains, where mounts Orizaba, Black Jack and Viscaïno pierce the sky, is reached by one of the finest stage roads in the country, and by trails. Here is the home of the Catalina wild goat which affords fine sport and entices the sportsman from peak to peak and down into deep canyons through an attractive, picturesque and delightful country. The stage road passes down Middle Ranch to Old Town and Eagle's Nest, headquarters for hunters. This sport is followed on horseback; horses especially trained for the purpose and familiar with the trails and mountains being available. In a single day good sport may be had, but the best plan is to go to Eagle's Nest, and spend several days hunting, and investigating the charms of this portion of the island which abounds in picturesque scenery. The finest heads of old bucks are taken to be mounted as trophies of the chase.



THE CATALINA WILD GOAT.

BOATING AND BATHING

For boating and bathing Avalon is unexcelled. Its perfect climate and sanitation, its smooth bay, its facilities for safe boating and bathing, render it the ideal place for ladies and children. The little bay is crowded with boats—fishing, sailing, launches, yachts, all providing for the public pleasure. The glass-bottomed boats are especial features by which visitors can view the bottom and watch the denizens of the ocean in their homes, the remarkably clear water aiding in the pastime. There are many boating trips to be made—to Empire Landing, where the famous ancient quarry is situated, to White's Landing, to the ancient Indian Townsites, to Clear Water Canyon, to the Indian Cavern and to the Isthmus, near which is the wonderful Blue Cavern, about which so much has been written.



THE SPRINGS, NEAR SUMMIT OF COACH ROAD.

FISH SHOOTING

One of the most remarkable sports of Catalina, that has attracted wide spread attention, is Flying Fish Shooting. The waters here abound in flying fish of large size, that start out of the water before the launch and bound away for perhaps an eighth of a mile. To shoot them on the wing from the deck of a flying power launch requires some skill.

COACHING AT SEA

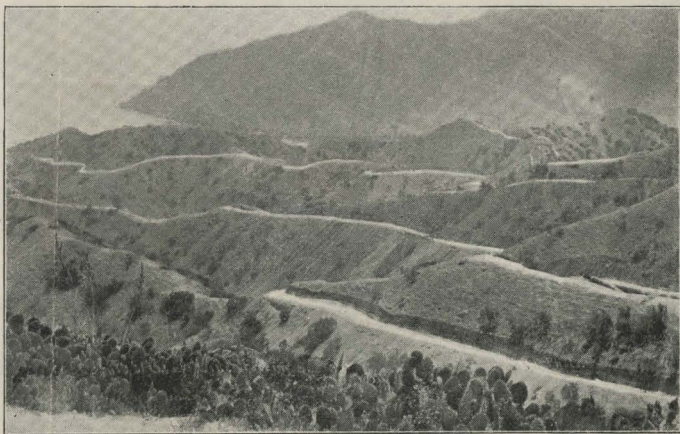
Among the many improvements made by the Banning Brothers, owners of the Island of Santa Catalina, a new coach road is perhaps the most striking. It reaches up from Avalon, climbing the mountains with a gradual ten per cent. grade, skirting the beautiful canyon of Descanso, forming a number of fine horseshoe curves. The road in its construction is one of the most perfect in the world, and while it skirts deep gorges and cliffs that face the sea, is perfectly safe. At 1000 feet elevation there is a loop permitting the road to enter another canyon, up which it climbs, finally with a second loop, reaching the summit, where a magnificent view of ocean and mountain is obtained. From here it skirts the ocean for two miles, then dips down into Middle Ranch Canyon to Sulphur Springs, taking the rider through a most interesting region, especially so in winter and spring, when the ground is covered with wild flowers. Well down the canyon the coach passes Old Town, finally stopping at Eagle's Nest, on the banks of Silver Brook, a beautiful and romantic spot in the heart of the game coun-

try where doves, quail, foxes and wild goats abound. Here are ample accommodations for the entertainment of ladies and gentlemen, including saddle horses, guides—in fact everything requisite for an enjoyable outing. The island stage ride is in every sense unique and entertaining; it is a feature of Catalina. The road is equipped with fine six-horse Concord coaches. Noted California drivers handle the ribbons.

CATALINA IN WINTER

That bananas ripen in Santa Catalina in winter would suggest a mild climate for this Isle of Summer. The winter is the time of flowers, when the island is a garden, an emerald in an azure setting. The rainfall is about fifteen inches, five inches less than on the mainland. There is, also, less change between day and night, and the pure air of mountain and ocean, free from impurities of any kind, make its an ideal resort and the most perfect winter climate in America, preferred by many physicians to the Riviera, Florida or Bermuda, as it is an all-the-year-round resort without the extremes of heat or cold, so that invalids may make the trial of continuous residence, a condition not found in the resorts referred to.

The Island from January to the middle of May is beautiful beyond description. Green is everywhere, and shortly after the first of January the mountains and lowlands are one mass of flowers, many of which are not found in other parts of the world. The water surrounding the Island is as clear as crystal; the sea moss, rocks and boulders, with the



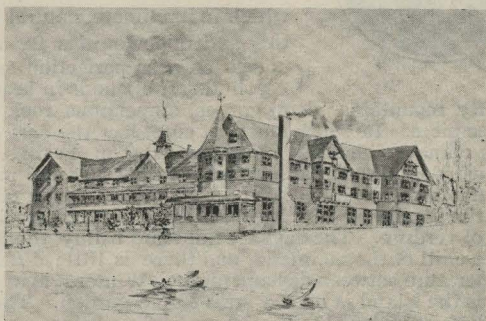
SUMMIT OF STAGE LINE, FACING AVALON.

millions of fish swimming to and fro, form a grand natural aquarium. All objects in these waters are visible at a depth of from fifty to one hundred feet.

Catalina Island is annually visited by many thousands of tourists and local people, and furnishes a field for pleasure unequalled in the West.

Points of Interest with Distances from Avalon

	Miles		Miles
Blue Cavern.....	12	Middle Ranch.....	8
Roaring Cave.	1	Little Harbor Hotel.....	12
Seal Rocks.....	3½	Catalina Harbor	13
Aquarium Reefs	4	Isthmus Dove	12½
Valley of Potts	9	San Clemente.....	25
Black Jack	7	Perdition Caves	12
Orizaba Mt	8	Middle Ranch Beach.....	12
San Nicholas.....	60		



THE HOTEL METROPOLE

Remodeled and enlarged. Commodious rooms with private baths. Spacious and splendid ball-room, reception-rooms, etc. Popular rates, polite attention, perfect service

For rates and further particulars regarding Santa Catalina Island, address

BANNING COMPANY

222 SO. SPRING ST., LOS ANGELES, CAL.

FARE: Round Trip Excursion Tickets, Los Angeles to Avalon, Good Going Saturday and Returning Monday, \$2.50. Unlimited, \$2.75.

Send for complete illustrated History and Handbook of Santa Catalina Island, by Chas. F. Holder. Price 25c. For sale at all bookstores,