

REPORT AND INDEX OF
UNDERWAY MARINE GEOPHYSICAL DATA

AVON EXPEDITION

LEG 8

(AVON08MV)

R/V Melville

(Issued October 1999)

Ports:

Honolulu, Hawaii (19 June 1999)

to

Astoria, Oregon (3 July 1999)

Chief Scientist:

John Colosi - Woods Hole Oceanographic Inst.
john@sicily.whoi.edu

Computer Technician - Ron Moe
Resident Marine Tech - Eugene Pillard

Post-Cruise Processing and Report Preparation by the
Geological Data Center, Scripps Institution of Oceanography
La Jolla, California 92093-0223

NOTE: *This is an index of underway geophysical data edited and processed after the completion of the cruise leg and is intended primarily for informal use within the institution. This document is not to be reproduced or distributed outside Scripps without prior approval of the chief scientist or the Geological Data Center, Scripps Institution of Oceanography, La Jolla, California 92093-0223*

GDC Cruise I.D.# 284

**REPORT AND INDEX OF NAVIGATION
AND UNDERWAY GEOPHYSICAL DATA**

Processed by the Geological Data Center
Scripps Institution of Oceanography

Contents:

Index Chart - gives track of cruise leg, dates, ports, and mileage of each type of data collected.

Track Charts - annotated with dates and hour ticks.

Profiles - depth, magnetic and gravity free air anomaly vs. distance. (Sections of track with seismic reflection data have a wide black line along the bottom of the profile.)

Sample Index - list of begin/end times and positions of all underway records as well as samples and measurements from other disciplines collected on the leg.

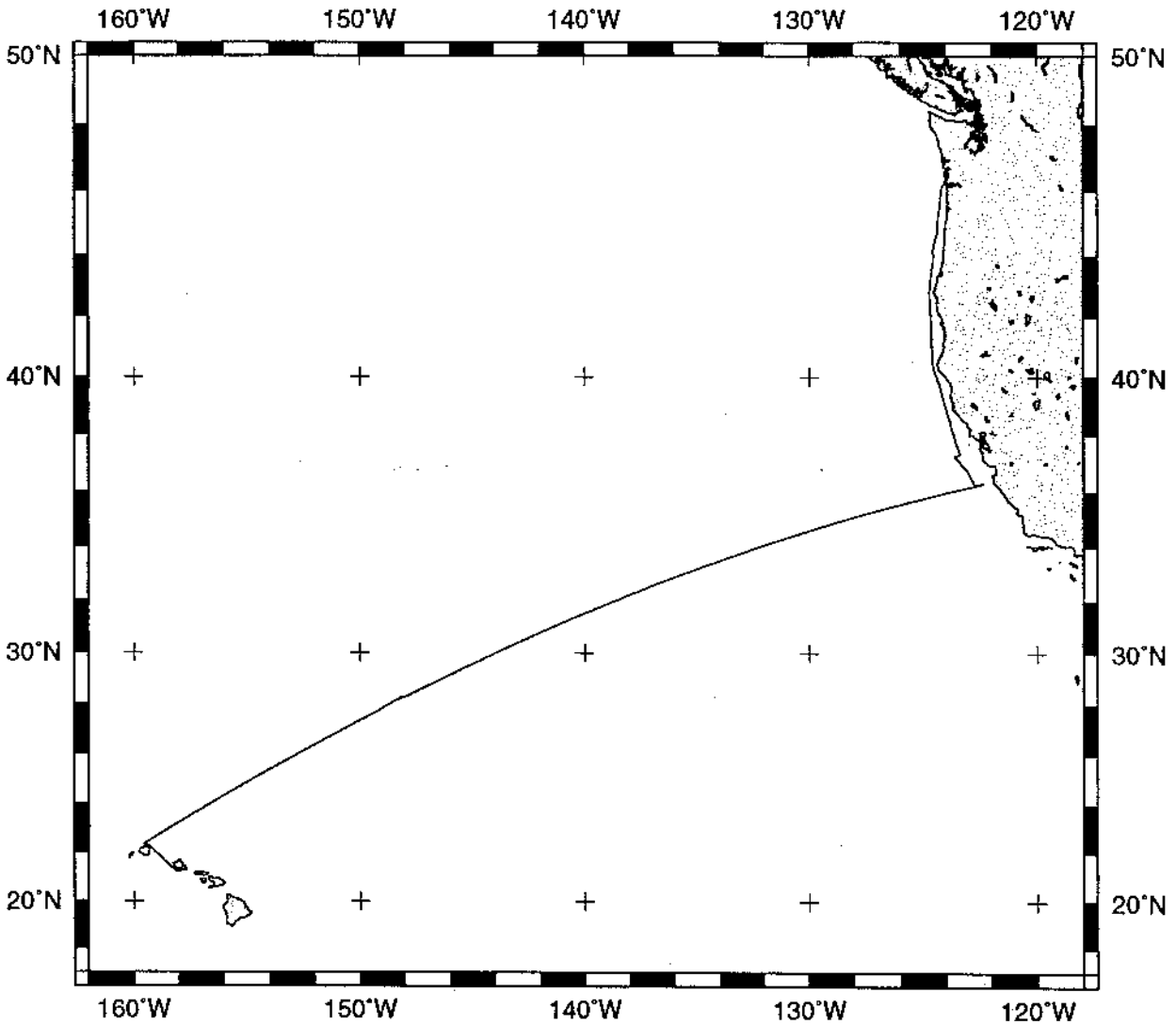
NOTE: One or more of the underway data types may not be collected on a given leg. For information on the availability and reproduction costs of data in the following forms, contact S.M. Smith, Curator, Geological Data Center, Scripps Institution of Oceanography, La Jolla, California 92093-0223. Phone: (619)534-2752, FAX: (619)534-6500, Internet email: ssmith@ucsd.edu

1. Files via ftp or on 8mm (Exabyte) and 4mm (DAT) magnetic tape:
 - a) Separate time series ASCII files of navigation, single beam depth, gravity and magnetics.
 - b) Above data in a single merged ASCII file in the MGD77 Exchange Format.
 - c) SeaBeam depth data (binary, Sun byte order)
 - d) SeaBeam Sidescan data.

2. Microfilm (35 mm flowfilm) or hard copies of:
 - a) Underway watch log book.
 - b) SeaBeam vertical beam profile/Sidescan records.
 - c) 3.5 kHz and 12 kHz echosounder records.
 - d) Seismic reflection profiler records.

3. Navigation listing with times and positions of fixes and course and speed changes.

4. Custom plots in Mercator projection:
 - a) Track plots.
 - b) SeaBeam depth contour plots.
 - c) Depth, magnetic or gravity values printed or profiled along track.



AVON EXPEDITION LEG 8 (AVON08MV)

CHIEF SCIENTIST: John Colosi, WHOI

PORTS: Honolulu, Hawaii - Astoria, Oregon

DATES: 19 June - 3 July 1999

SHIP: R/V Melville

TOTAL MILEAGE OF UNDERWAY DATA COLLECTED

Cruise - 2922 miles

Magnetics - none collected

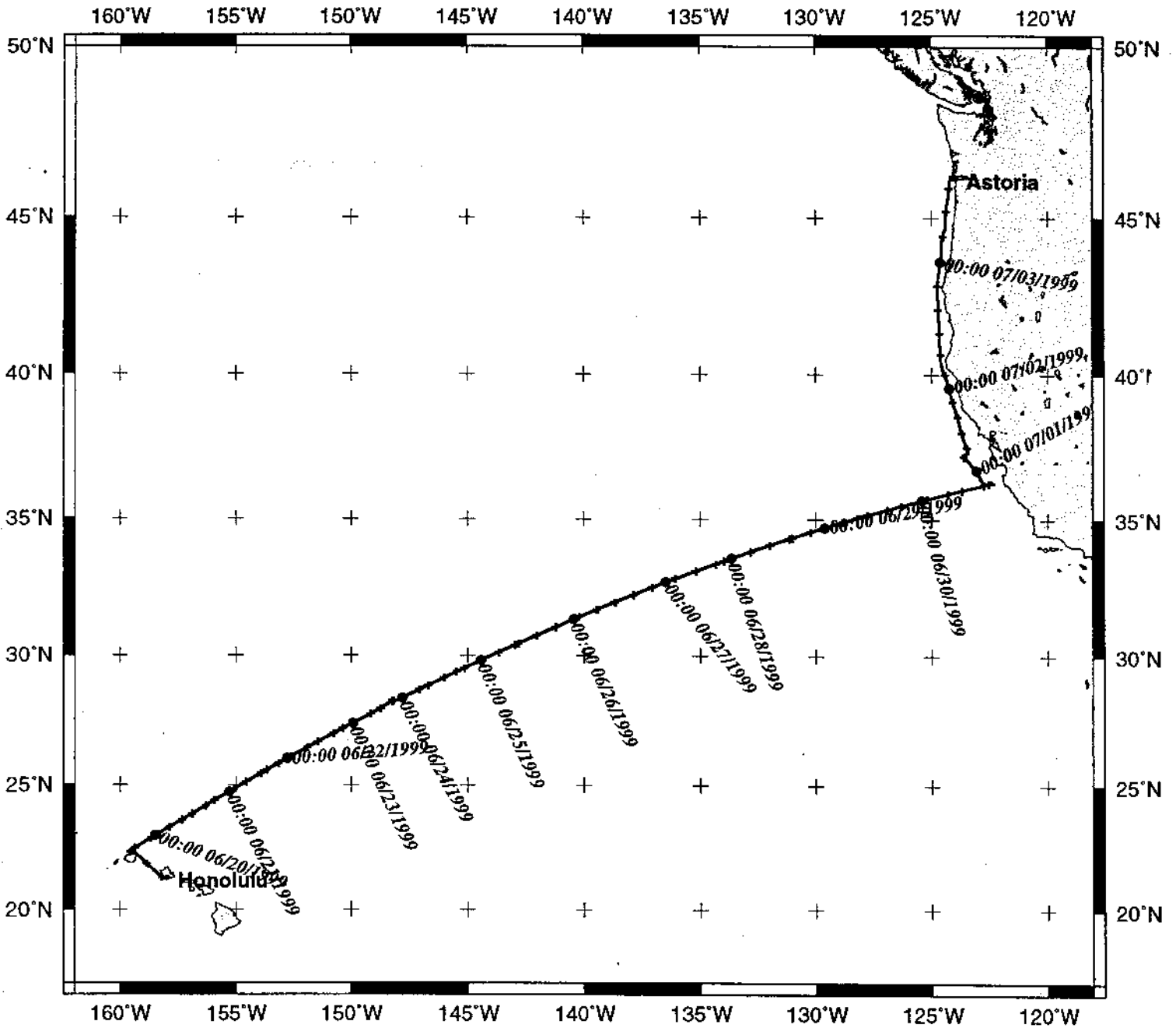
Bathymetry - 2697 miles

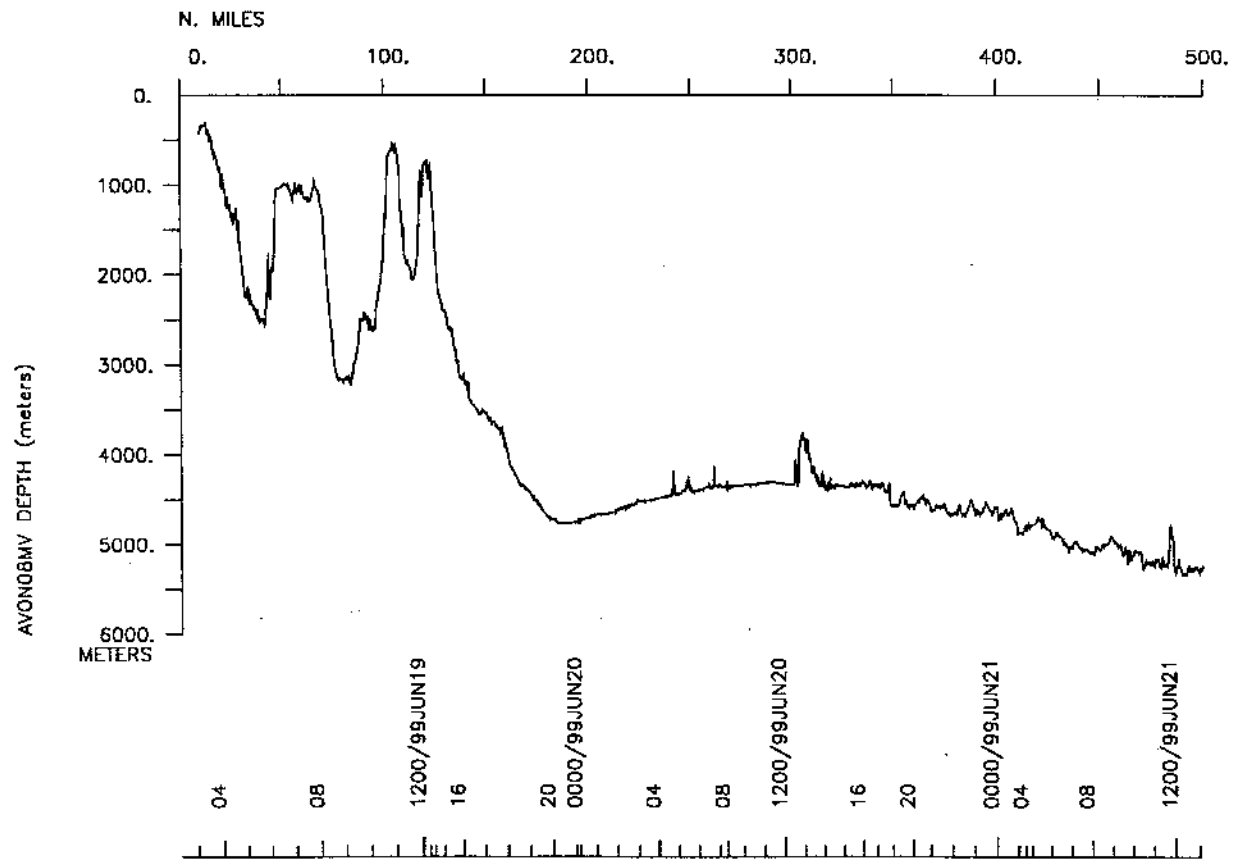
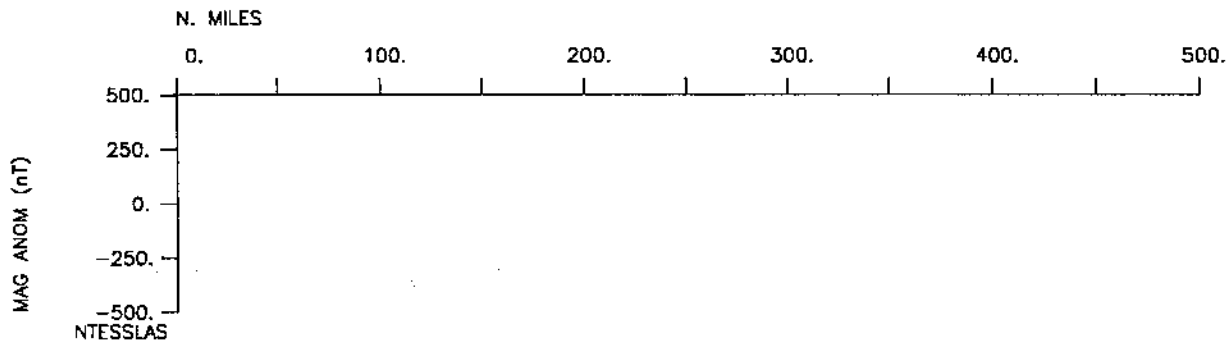
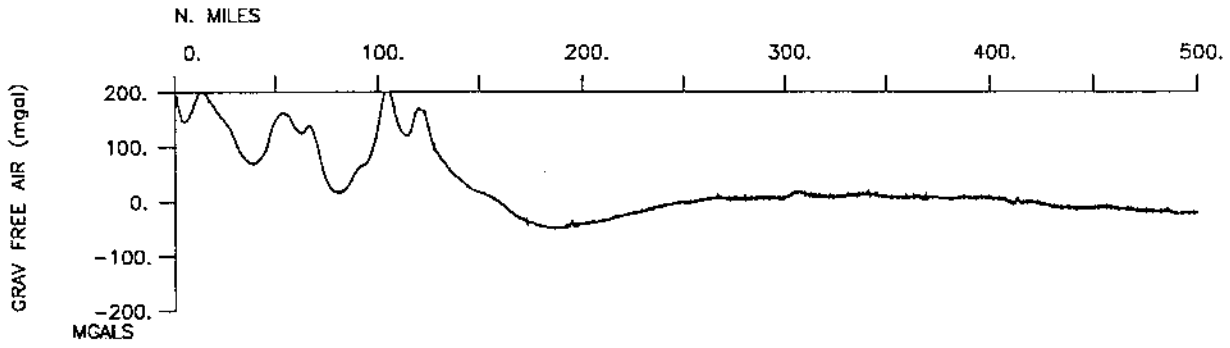
Seismic Reflection - none collected

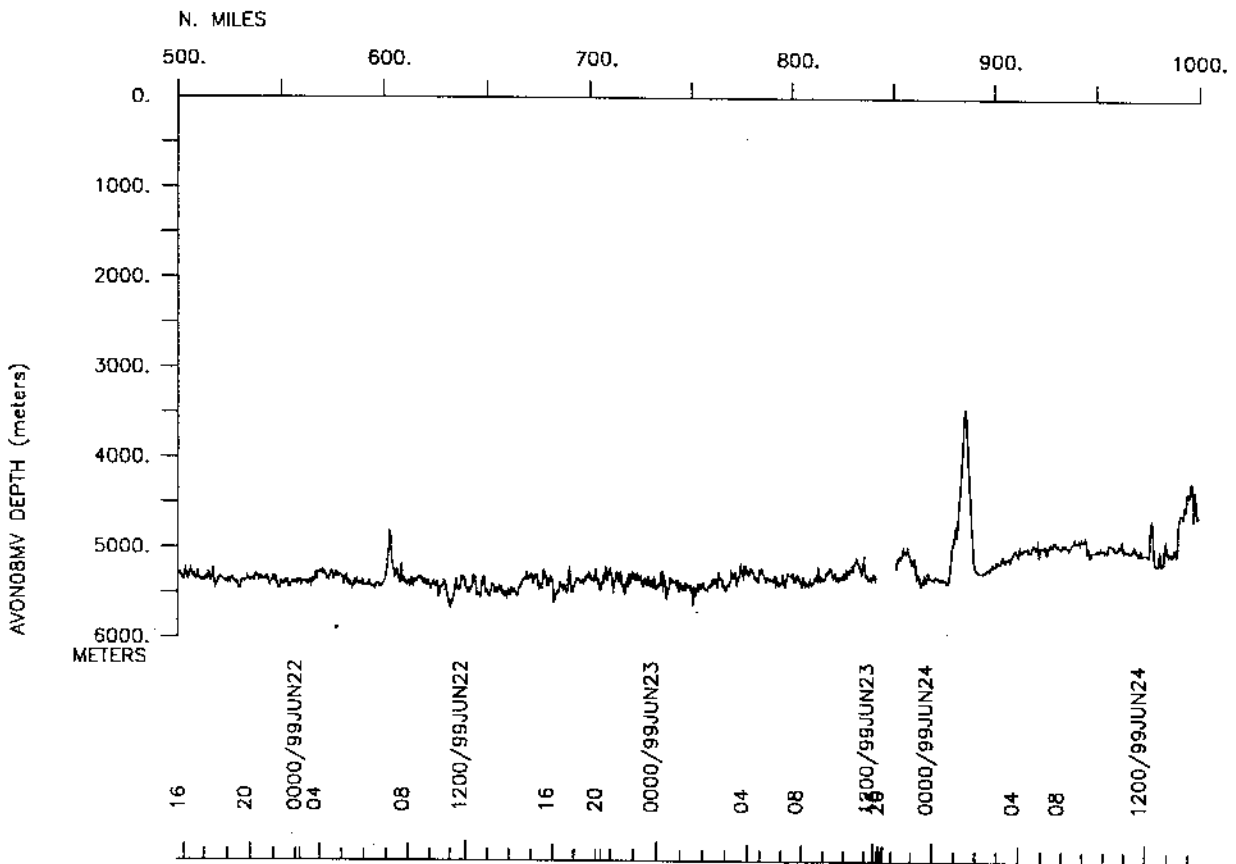
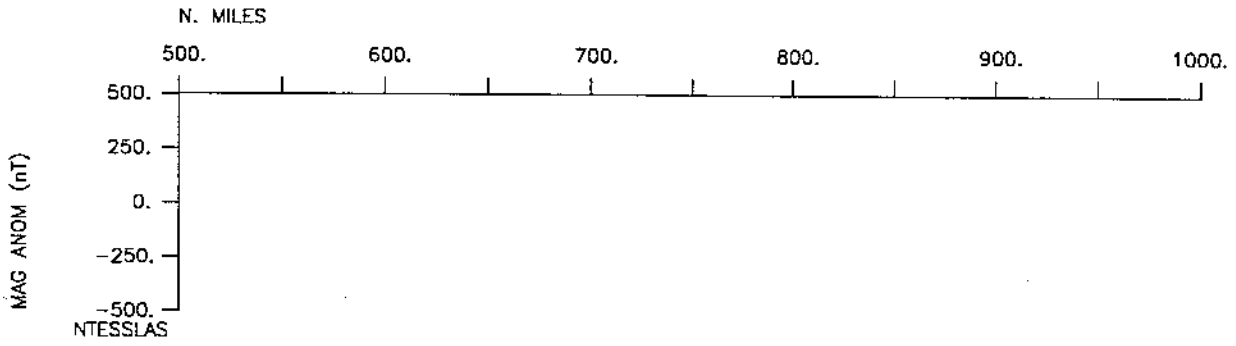
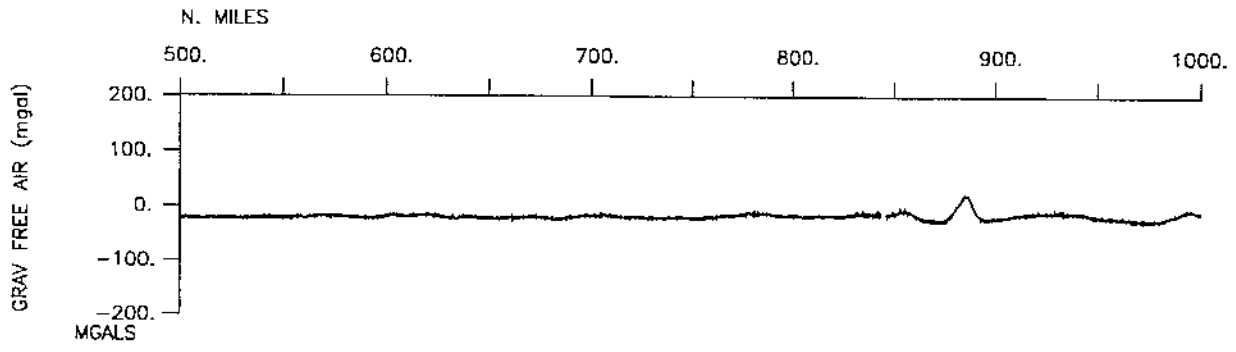
Sea Beam - 2697 miles

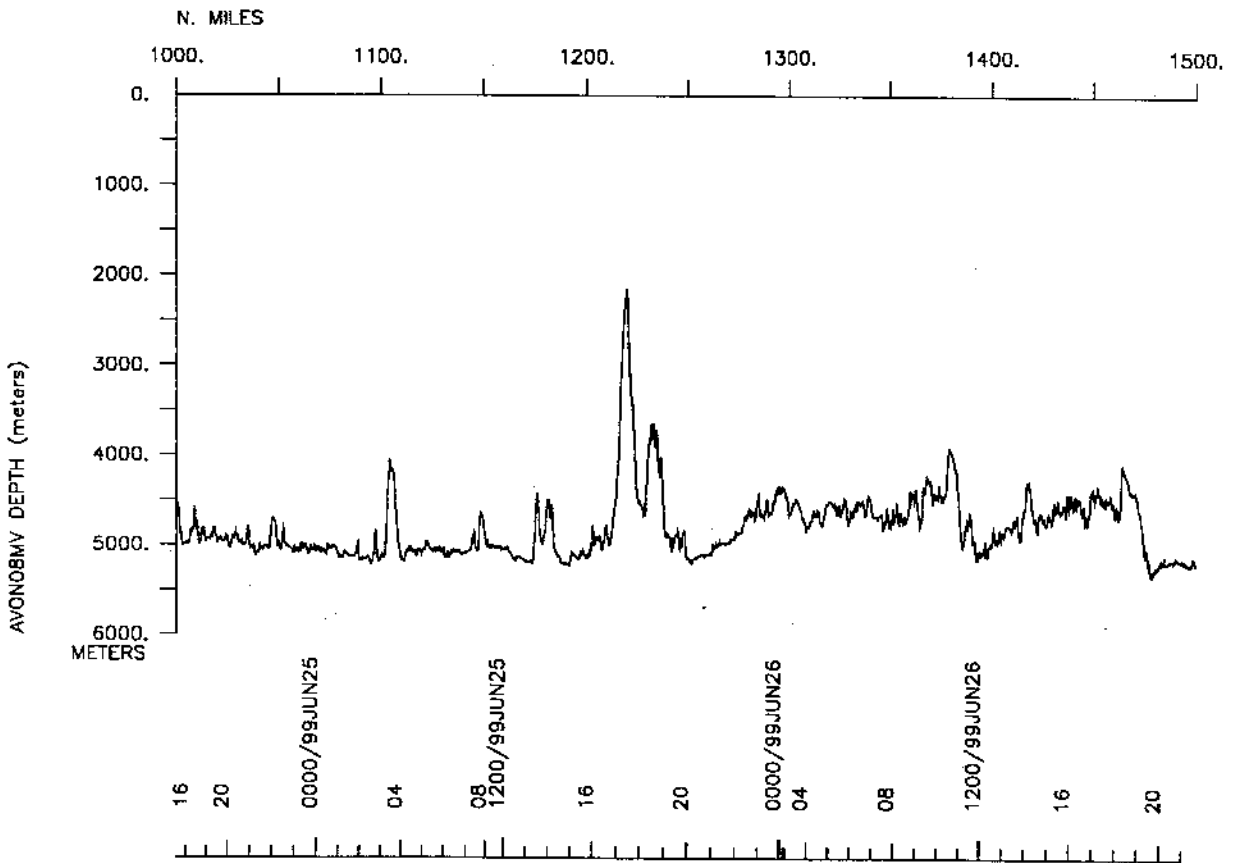
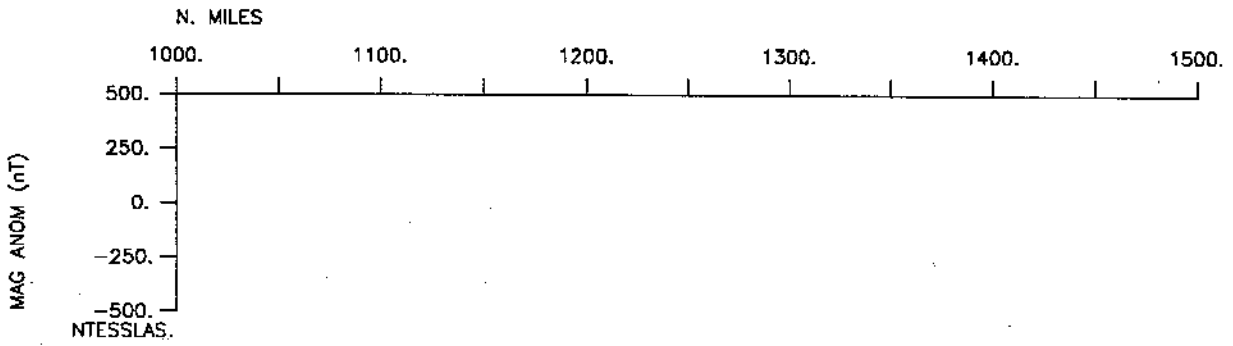
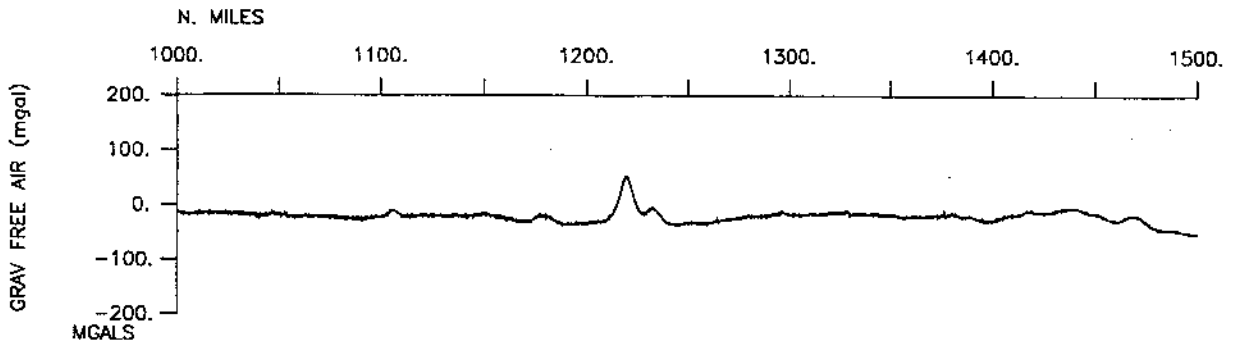
Gravity - 2922 miles

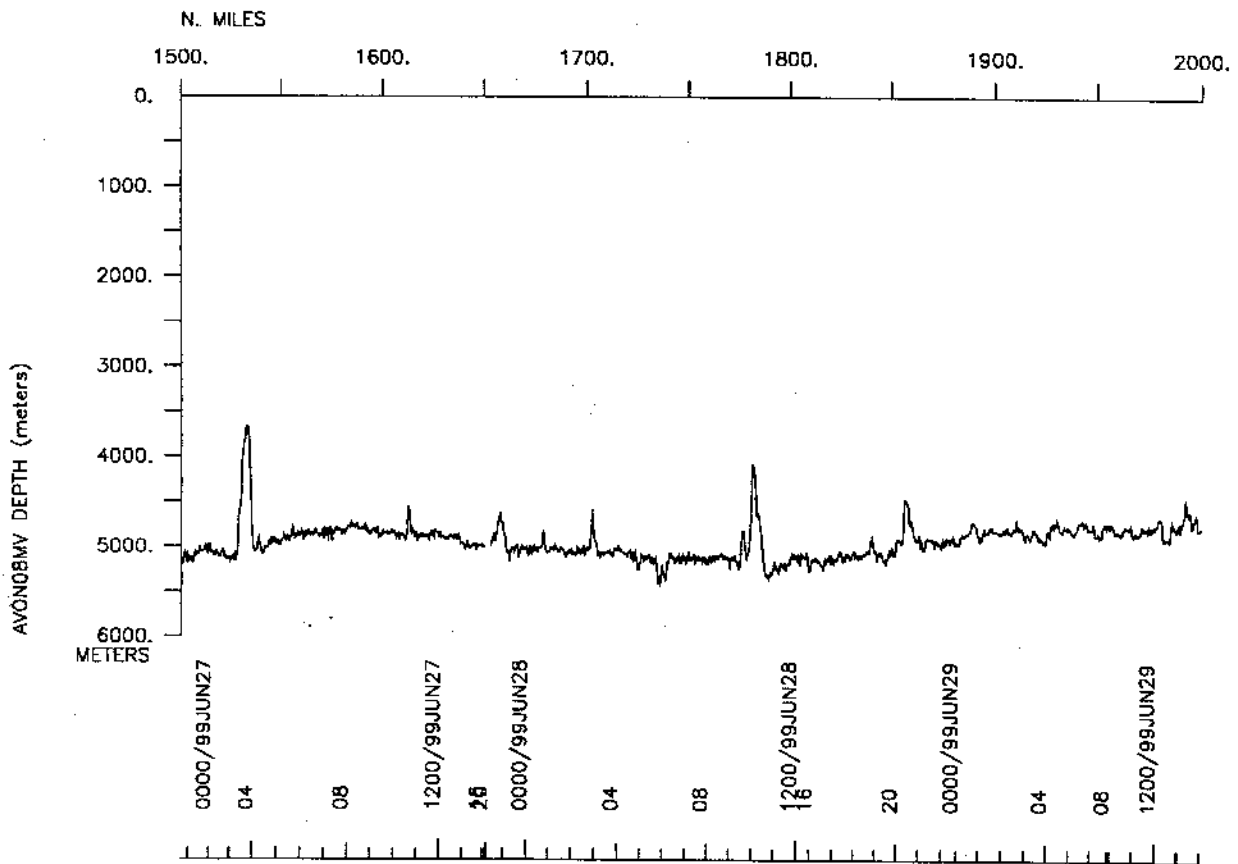
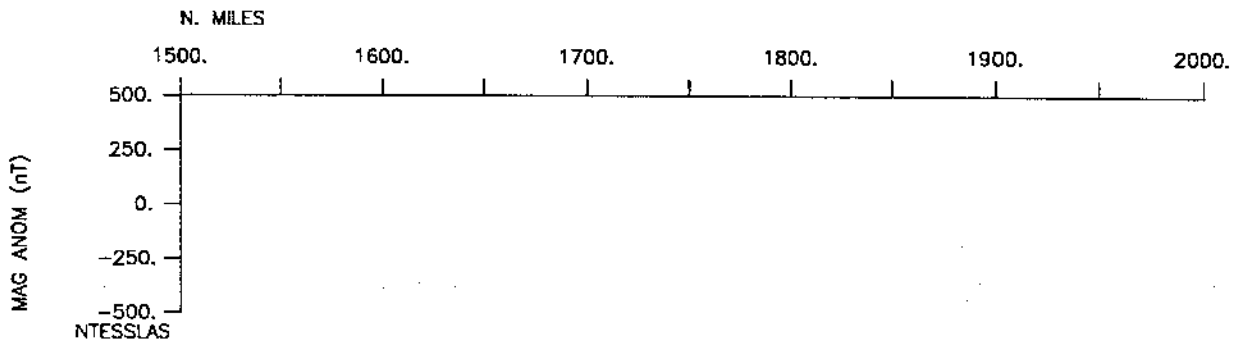
AVON Leg 8 Track

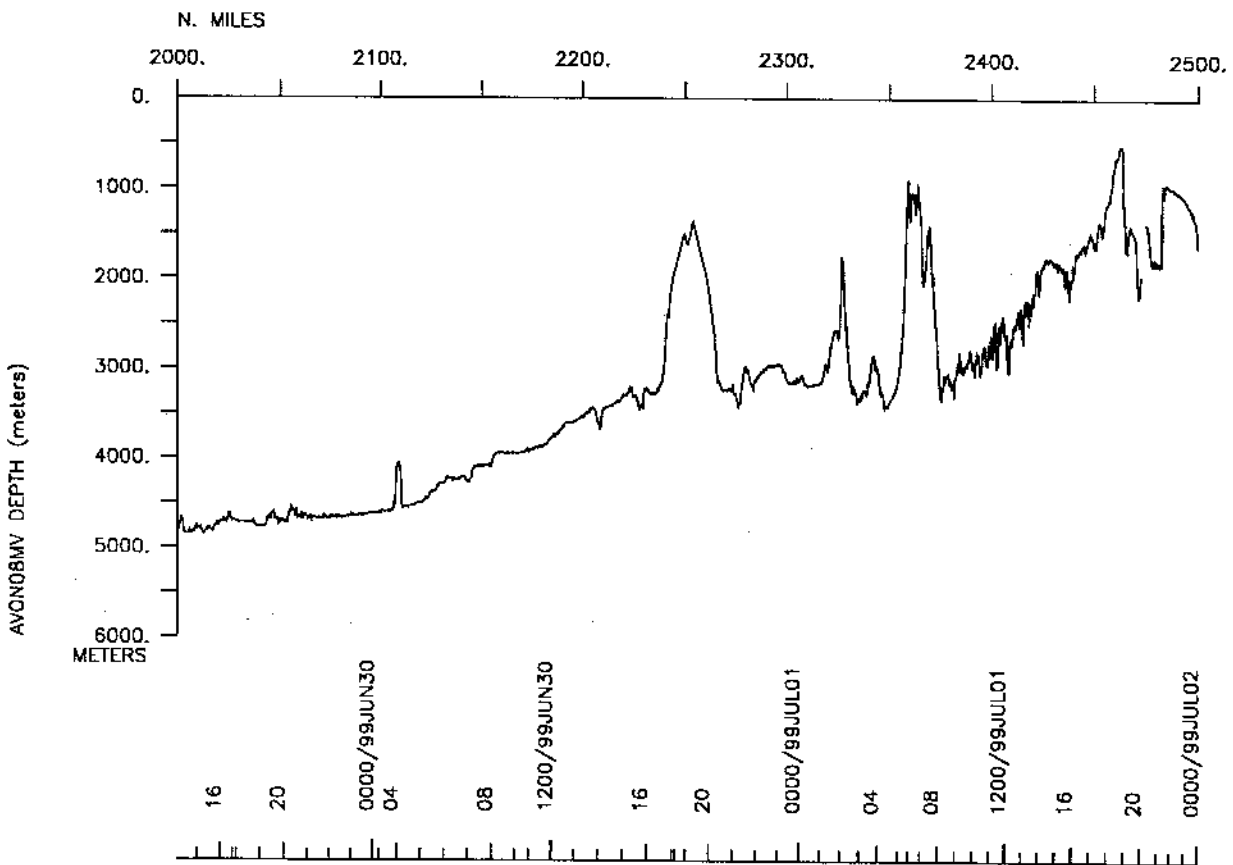
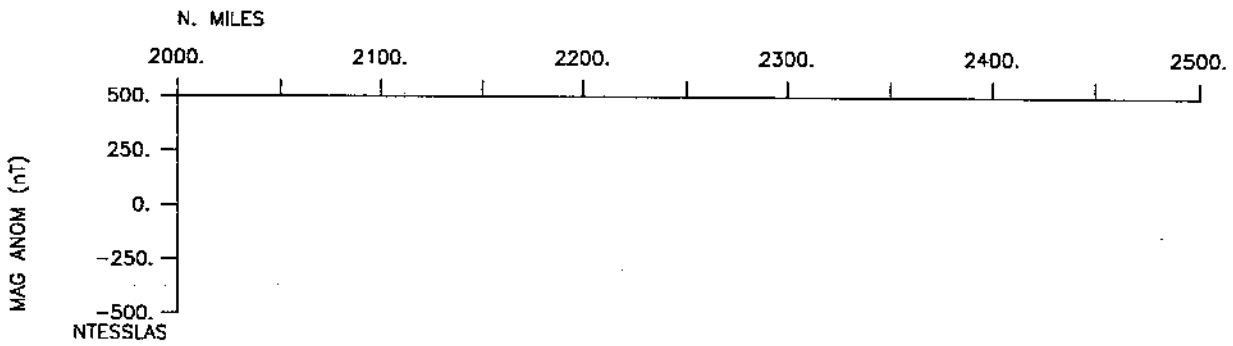
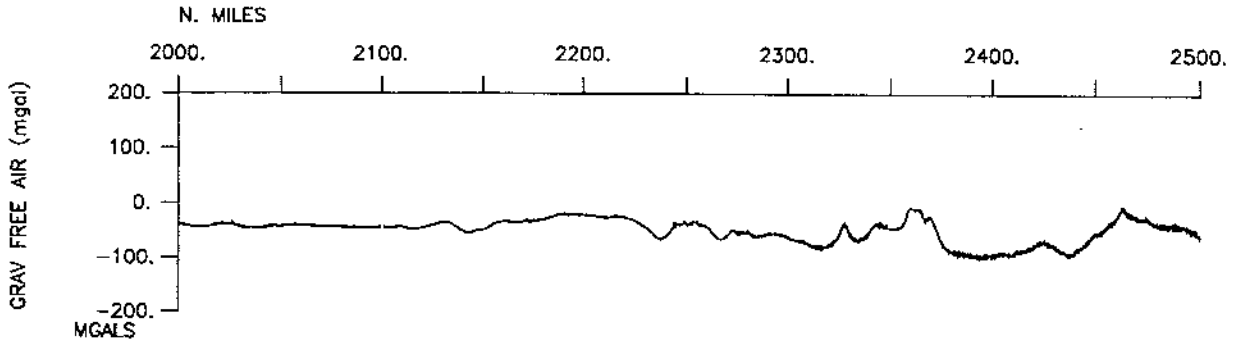


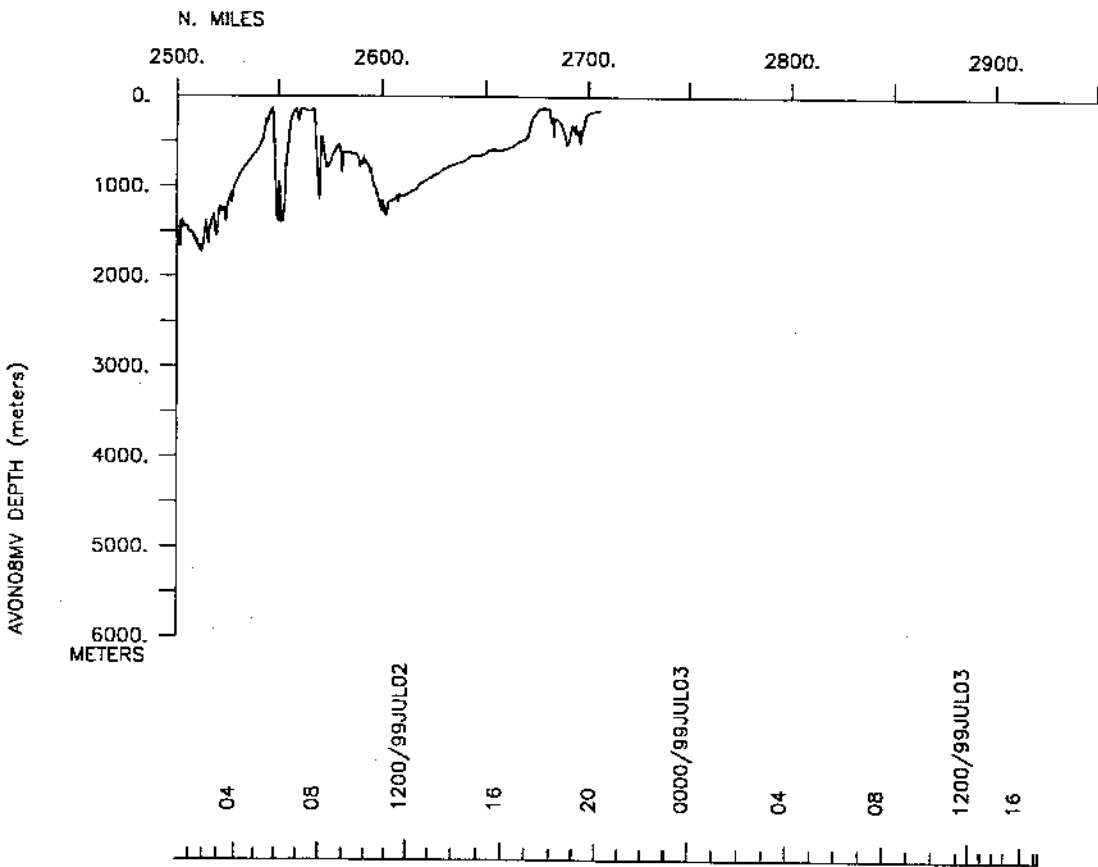
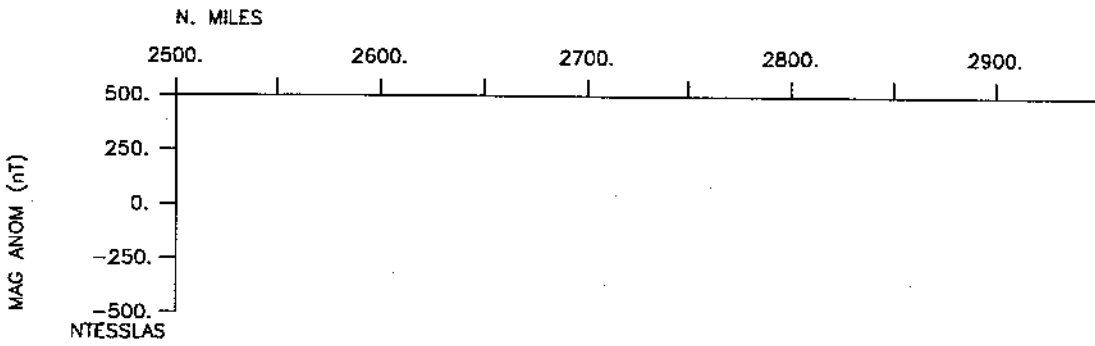
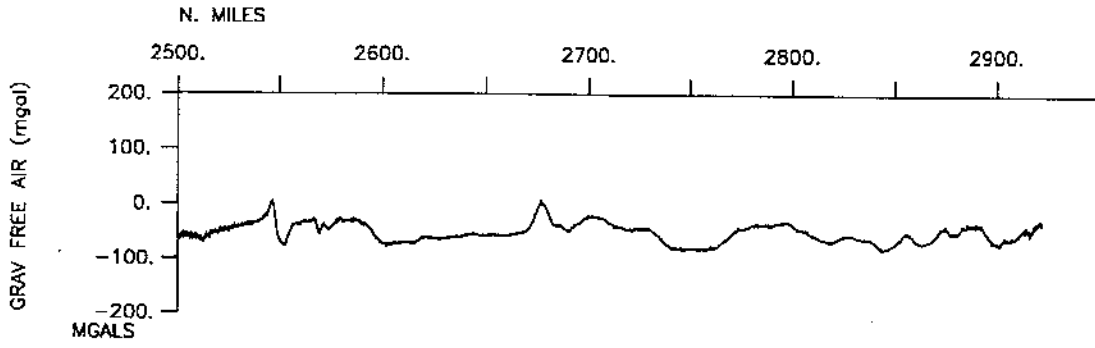












S.I.O. SAMPLE INDEX

AVON EXPEDITION

LEG 8

(AVON08MV)

R/V Melville

(Issued October 1999)

Ports:

Honolulu, Hawaii (19 June 1999)

to

Astoria, Oregon (3 July 1999)

Chief Scientist:

John Colosi, Woods Hole Oceanographic Inst.

The Sample Index is a first level interdisciplinary listing of time, position, sample identification and disposition of all samples, records and measurements collected on this cruise leg. The index data are encoded at sea by the resident marine technician and processed on shore by the S.I.O. Geological Data Center shortly after the completion of the cruise leg.

Positions are interpolated on the basis of sample time by comparison to a single, edited navigation file. Samples beginning at one time and position and ending at another are entered on two consecutive lines. Disposition and sample type are represented by three and four character codes to permit future computer searches on these parameters. (Listings defining these codes are available from the Geological Data Center.)

GDC Cruise I.D.# 284

**** Ports ****

0200	190699	LGPT B Honolulu, Hawaii	GDC	21-18.00N	157-52.00W	f	AVON08MV
1630	030799	LGPT E Honolulu, Hawaii	GDC	21-18.00N	157-52.00W	f	AVON08MV

**** Personnel ****

#	*****NAME*****	*****TITLE*****	*****AFFILIATION*****	**CRID**
PECS	WHOI Colosi, John	Chief Scientist	Woods Hole	AVON08MV
PESP	IGPP Dzieciuch, Matt	Technician	Scripps Institution	AVON08MV
PESP	UWA Eland, Mitch	Dev. Technician	Univ. of Washington	AVON08MV
PESP	UWA Howe, Bruce	Scientist	Univ. of Washington	AVON08MV
PECT	STS Moe, Ron	Computer Engineer	Scripps Institution	AVON08MV
PESP	UWA Olson, Leroy	Senior Engineer	Univ. of Washington	AVON08MV
PERT	STS Pillard, Eugene	Resident Tech	Scripps Institution	AVON08MV
PESP	IGPP Rivera, Americo	Dev. Technician	Scripps Institution	AVON08MV
PEVL	UWA Teeter, Anna	Volunteer	Univ. of Washington	AVON08MV
PESP	UWA Wolfson, Michael	Scientist	Univ. of Washington	AVON08MV

**** NOTES ****

#An 'X' in the (B)egin/(E)nd column following the sample code indicates no #sample or data recovered. A 'C' indicates continuation of data collection #from before the beginning or after the end of a particular leg. (Moored #bottom instruments, for example.) The number appearing in the columns #between the sample identifier and the disposition code, for many sample #entries, is the water depth in corrected meters.

#GMT	DDMMYY	SAMP	B	SAMPLE	DISP			p	CRUISE
#TIME	DATE	TZ	CODE	E IDENTIFIER	CODE	LATITUDE	LONGITUDE	c	LEG-SHIP

**** Underway Data Curator - S. M. Smith ext. 42752 ****

**** Log Books ****

0315	190699	0	LBUW	B partial underway log	GDC	21-14.09N	158-02.44W	g	AVON08MV
2010	030799	0	LBUW	E partial underway log	GDC	46-11.35N	123-51.57W	g	AVON08MV

**** Sea Beam Records (vertical beam and side scan) ****

0315	190699	0	MBSR	B v.beam&sidescan r-01	GDC	21-14.09N	158-02.44W	g	AVON08MV
0700	240699	0	MBSR	E v.beam&sidescan r-01	GDC	28-50.30N	146-43.68W	g	AVON08MV
0700	240699	0	MBSR	B v.beam&sidescan r-02	GDC	28-50.30N	146-43.68W	g	AVON08MV
2010	020799	0	MBSR	E v.beam&sidescan r-02	GDC	42-55.07N	124-44.16W	g	AVON08MV

**** Digital Recorded Gravity ****

0200	190699	0	GVDR	B Gravity Data	GDC	21-17.90N	157-52.09W	g	AVON08MV
1630	030799	0	GVDR	E Gravity Data	GDC	46-13.51N	123-58.31W	g	AVON08MV

#GMT	DDMMYY	SAMP	B	SAMPLE	DISP				p	CRUISE
#TIME	DATE	TZ	CODE	E IDENTIFIER	CODE	LATITUDE	LONGITUDE		c	LEG-SHIP
#-----	-----	---	---	-----	---	-----	-----	-----	---	-----
*** Acoustic Doppler Current Profiler ***										
0200	190699	0	ADCP	B ADCP	GDC	21-17.90N	157-52.09W		g	AVON08MV
1630	030799	0	ADCP	E ADCP	GDC	46-13.51N	123-58.31W		g	AVON08MV
*** Integrated Meteorological Acquisition System ***										
0200	190699	0	IMET	B Weather Data	GDC	21-17.90N	157-52.09W		g	AVON08MV
1630	030799	0	IMET	E Weather Data	GDC	46-13.51N	123-58.31W		g	AVON08MV
*** Conductivity, Temperature, Depth ***										
1609	230699	0	TDXX	C ADCP, T, C, P.	WHOI	21-17.90N	157-52.09W		g	AVON08MV
2100	230699	0	TDXX	E Mooring for ATOC	WHOI	28-15.77N	148-12.72W		g	AVON08MV
1819	270699	0	TDXX	C ADCP, T, C, P.	WHOI	21-17.90N	157-52.09W		g	AVON08MV
2200	270699	0	TDXX	E Mooring for ATOC	WHOI	33-30.08N	133-59.48W		g	AVON08MV
1230	190699	0	TDXX	B transmissometer	WHOI	22-21.03N	159-34.62W		g	AVON08MV
1320	190699	0	TDXX	E with CTD 926m	WHOI	22-21.02N	159-34.61W		g	AVON08MV
2112	190699	0	TDXX	B transmissometer	WHOI	22-58.90N	158-27.75W		g	AVON08MV
0003	200699	0	TDXX	E with CTD 4738m	WHOI	22-59.00N	158-27.47W		g	AVON08MV
0730	200699	0	TDXX	B transmissometer	WHOI	23-36.65N	157-20.22W		g	AVON08MV
0912	200699	0	TDXX	E E with CTD 1500m	WHOI	23-36.76N	157-20.30W		g	AVON08MV
1652	200699	0	TDXX	B transmissometer	WHOI	24-13.72N	156-12.21W		g	AVON08MV
1800	200699	0	TDXX	E E with CTD 1500m	WHOI	24-13.69N	156-12.19W		g	AVON08MV
0128	210699	0	TDXX	B transmissometer	WHOI	24-50.28N	155-03.54W		g	AVON08MV
0420	210699	0	TDXX	E with CTD 4895m	WHOI	24-50.28N	155-03.58W		g	AVON08MV
1208	210699	0	TDXX	B transmissometer	WHOI	25-26.33N	153-54.27W		g	AVON08MV
1302	210699	0	TDXX	E E with CTD 1500m	WHOI	25-26.33N	153-54.28W		g	AVON08MV
1556	210699	0	TDXX	B transmissometer	WHOI	25-34.41N	153-38.15W		g	AVON08MV
1657	210699	0	TDXX	E E with CTD 1500m	WHOI	25-34.42N	153-38.15W		g	AVON08MV
2216	210699	0	TDXX	B transmissometer	WHOI	26-01.86N	152-44.31W		g	AVON08MV
0300	220699	0	TDXX	E with CTD 5314m	WHOI	26-01.82N	152-44.30W		g	AVON08MV
1005	220699	0	TDXX	B transmissometer	WHOI	26-36.76N	151-33.66W		g	AVON08MV
1110	220699	0	TDXX	E E with CTD 1500m	WHOI	26-36.76N	151-33.63W		g	AVON08MV
1820	220699	0	TDXX	B transmissometer	WHOI	27-11.04N	150-22.40W		g	AVON08MV
2130	220699	0	TDXX	E with CTD 5366m	WHOI	27-11.08N	150-22.24W		g	AVON08MV
0408	230699	0	TDXX	B transmissometer	WHOI	27-44.79N	149-10.09W		g	AVON08MV
0512	230699	0	TDXX	E E with CTD 1500m	WHOI	27-44.79N	149-10.12W		g	AVON08MV
1143	230699	0	TDXX	B transmissometer	WHOI	28-13.18N	148-14.46W		g	AVON08MV
1436	230699	0	TDXX	E with CTD 5222m	WHOI	28-13.18N	148-14.45W		g	AVON08MV

#GMT	DDMMYY	SAMP	B	SAMPLE	DISP				p	CRUISE
#TIME	DATE	TZ	CODE	E IDENTIFIER	CODE	LATITUDE	LONGITUDE		c	LEG-SHIP
#										
0612	240699	0	TDXX	B transmissometer	WHOI	28-50.29N	146-43.76W		g	AVON08MV
0754	240699	0	TDXX	E E with CTD 1500m	WHOI	28-50.30N	146-43.68W		g	AVON08MV
1509	240699	0	TDXX	B transmissometer	WHOI	29-22.05N	145-29.36W		g	AVON08MV
1800	240699	0	TDXX	E E with CTD 4973m	WHOI	29-22.04N	145-29.33W		g	AVON08MV
0812	250699	0	TDXX	B transmissometer	WHOI	30-23.37N	142-58.32W		g	AVON08MV
1103	250699	0	TDXX	E with CTD 4923m	WHOI	30-23.40N	142-58.32W		g	AVON08MV
0022	260699	0	TDXX	B transmissometer	WHOI	31-21.76N	140-24.18W		g	AVON08MV
0248	260699	0	TDXX	E with CTD 4407m	WHOI	31-21.79N	140-24.21W		g	AVON08MV
2305	260699	0	TDXX	B transmissometer	WHOI	32-43.39N	136-27.22W		g	AVON08MV
0200	270699	0	TDXX	E with CTD 5107m	WHOI	32-43.40N	136-27.22W		g	AVON08MV
1402	270699	0	TDXX	B transmissometer	WHOI	33-29.31N	133-58.57W		g	AVON08MV
1648	270699	0	TDXX	E with CTD 4918m	WHOI	33-29.38N	133-58.52W		g	AVON08MV
1244	280699	0	TDXX	B transmissometer	WHOI	34-20.13N	131-00.42W		g	AVON08MV
1548	280699	0	TDXX	E with CTD 5186m	WHOI	34-20.14N	131-00.42W		g	AVON08MV
2250	280699	0	TDXX	B transmissometer	WHOI	34-41.98N	129-36.84W		g	AVON08MV
2358	280699	0	TDXX	E with CTD 1580m	WHOI	34-41.99N	129-36.83W		g	AVON08MV
0656	290699	0	TDXX	B transmissometer	WHOI	35-02.87N	128-12.55W		g	AVON08MV
0945	290699	0	TDXX	E with CTD 4675m	WHOI	35-02.91N	128-12.56W		g	AVON08MV
1640	290699	0	TDXX	B transmissometer	WHOI	35-22.84N	126-47.57W		g	AVON08MV
1742	290699	0	TDXX	E E with CTD 1500m	WHOI	35-22.84N	126-47.56W		g	AVON08MV
0028	300699	0	TDXX	B transmissometer	WHOI	35-41.71N	125-21.90W		g	AVON08MV
0306	300699	0	TDXX	E with CTD 4590m	WHOI	35-41.76N	125-21.89W		g	AVON08MV
0942	300699	0	TDXX	B transmissometer	WHOI	35-59.69N	123-55.54W		g	AVON08MV
1045	300699	0	TDXX	E E with CTD 1500m	WHOI	35-59.69N	123-55.53W		g	AVON08MV
1712	300699	0	TDXX	B transmissometer	WHOI	36-16.33N	122-29.59W		g	AVON08MV
1836	300699	0	TDXX	E E with CTD 1835m	WHOI	36-16.54N	122-29.06W		g	AVON08MV

**** Bathythermographs ****

0450	210699	0	BTXP	B High resolution xbt	WHOI	24-50.59N	155-03.05W		g	AVON08MV
1108	210699	0	BTXP	E survey 1-xbt/5min.	WHOI	25-21.65N	154-03.25W		g	AVON08MV
0530	230699	0	BTXP	B High resolution xbt	WHOI	27-44.94N	149-09.71W		g	AVON08MV
1120	230699	0	BTXP	E survey 1-xbt/5min.	WHOI	28-12.76N	148-13.97W		g	AVON08MV
1724	250699	0	BTXP	B High resolution xbt	WHOI	30-50.88N	141-47.08W		g	AVON08MV
2236	250699	0	BTXP	E survey 1-xbt/5min.	WHOI	31-15.05N	140-42.25W		g	AVON08MV
0209	270699	0	BTXP	B High resolution xbt	WHOI	32-43.54N	136-26.78W		g	AVON08MV
0737	270699	0	BTXP	E survey 1-xbt/5min.	WHOI	33-05.92N	135-16.30W		g	AVON08MV
0006	290699	0	BTXP	B High resolution xbt	WHOI	34-41.99N	129-36.81W		g	AVON08MV
0536	290699	0	BTXP	E survey 1-xbt/5min.	WHOI	34-59.36N	128-27.48W		g	AVON08MV

#GMT #TIME #-----	DDMMYY DATE	TZ	SAMP B CODE E	SAMPLE IDENTIFIER	DISP CODE	LATITUDE	LONGITUDE	p c	CRUISE LEG-SHIP
0102	200699	0	BTXP	X7 6	WHOI	23-03.31N	158-19.46W	g	AVON08MV
0424	200699	0	BTXP	X7 8	WHOI	23-20.81N	157-48.51W	g	AVON08MV
0559	200699	0	BTXP	X7 9	WHOI	23-29.02N	157-33.83W	g	AVON08MV
0900	200699	0	BTXP	X7 10	WHOI	23-36.65N	157-20.18W	g	AVON08MV
1105	200699	0	BTXP	X7 11	WHOI	23-45.79N	157-02.44W	g	AVON08MV
1238	200699	0	BTXP	X7 12	WHOI	23-54.14N	156-48.35W	g	AVON08MV
1424	200699	0	BTXP	X7 13	WHOI	24-02.68N	156-32.74W	g	AVON08MV
1606	200699	0	BTXP	X7 14	WHOI	24-10.79N	156-17.61W	g	AVON08MV
1918	200699	0	BTXP	X7 15	WHOI	24-19.22N	156-01.89W	g	AVON08MV
2106	200699	0	BTXP	X7 16	WHOI	24-27.41N	155-46.65W	g	AVON08MV
2113	200699	0	BTXP	X7 16B	WHOI	24-28.02N	155-45.49W	g	AVON08MV
2236	200699	0	BTXP	X7 17	WHOI	24-35.60N	155-31.27W	g	AVON08MV
0005	210699	0	BTXP	X7 18	WHOI	24-43.42N	155-15.85W	g	AVON08MV
1144	210699	0	BTXP	X7 23	WHOI	25-24.87N	153-57.04W	g	AVON08MV
1432	210699	0	BTXP	X7 23A	WHOI	25-29.07N	153-48.67W	g	AVON08MV
1510	210699	0	BTXP	X7 24	WHOI	25-32.43N	153-42.07W	g	AVON08MV
1812	210699	0	BTXP	X7 25	WHOI	25-40.35N	153-26.65W	g	AVON08MV
1940	210699	0	BTXP	X7 26	WHOI	25-48.32N	153-10.95W	g	AVON08MV
2108	210699	0	BTXP	X7 27	WHOI	25-56.38N	152-55.09W	g	AVON08MV
0337	220699	0	BTXP	X7 28	WHOI	26-04.34N	152-39.20W	g	AVON08MV
0504	220699	0	BTXP	X7 29	WHOI	26-12.04N	152-23.66W	g	AVON08MV
0637	220699	0	BTXP	X7 30	WHOI	26-20.01N	152-07.57W	g	AVON08MV
0808	220699	0	BTXP	X7 31	WHOI	26-27.76N	151-51.86W	g	AVON08MV
1240	220699	0	BTXP	X7 33	WHOI	26-43.49N	151-19.63W	g	AVON08MV
1412	220699	0	BTXP	X7 34	WHOI	26-51.07N	151-03.70W	g	AVON08MV
1546	220699	0	BTXP	X7 35	WHOI	26-58.87N	150-47.69W	g	AVON08MV
1719	220699	0	BTXP	X7 36	WHOI	27-06.54N	150-31.73W	g	AVON08MV
2215	220699	0	BTXP	X7 37	WHOI	27-14.40N	150-15.26W	g	AVON08MV
2340	220699	0	BTXP	X7 32	WHOI	26-01.82N	152-44.30W	g	AVON08MV
0005	230699	0	BTXP	X7 38	WHOI	27-24.01N	149-54.52W	g	AVON08MV
0115	230699	0	BTXP	X7 39	WHOI	27-30.30N	149-41.05W	g	AVON08MV
0230	230699	0	BTXP	X7 40	WHOI	27-36.99N	149-26.99W	g	AVON08MV
0357	230699	0	BTXP	X7 41	WHOI	27-44.55N	149-10.60W	g	AVON08MV
2230	230699	0	BTXP	X7 45	WHOI	28-14.78N	148-04.10W	g	AVON08MV
0000	240699	0	BTXP	X7 46	WHOI	28-21.79N	147-48.42W	g	AVON08MV
0154	240699	0	BTXP	X7 47	WHOI	28-13.91N	148-15.03W	g	AVON08MV
0313	240699	0	BTXP	X7 48	WHOI	28-37.10N	147-13.93W	g	AVON08MV
0436	240699	0	BTXP	X7 49	WHOI	28-43.68N	146-58.87W	g	AVON08MV
0814	240699	0	BTXP	X7 50	WHOI	28-50.89N	146-42.37W	g	AVON08MV
0947	240699	0	BTXP	X7 51	WHOI	28-58.10N	146-25.68W	g	AVON08MV
1120	240699	0	BTXP	X7 52	WHOI	29-05.17N	146-09.11W	g	AVON08MV
1253	240699	0	BTXP	X7 53	WHOI	29-12.29N	145-52.45W	g	AVON08MV
1426	240699	0	BTXP	X7 54	WHOI	29-19.36N	145-35.79W	g	AVON08MV
1904	240699	0	BTXP	X7 55	WHOI	29-26.39N	145-18.93W	g	AVON08MV
2036	240699	0	BTXP	X7 56	WHOI	29-33.43N	145-02.04W	g	AVON08MV
2210	240699	0	BTXP	X7 57	WHOI	29-40.57N	144-44.76W	g	AVON08MV
2345	240699	0	BTXP	X7 58	WHOI	29-47.54N	144-27.77W	g	AVON08MV
0115	250699	0	BTXP	X7 59	WHOI	29-54.28N	144-11.25W	g	AVON08MV
0247	250699	0	BTXP	X7 60	WHOI	30-01.12N	143-54.33W	g	AVON08MV
0422	250699	0	BTXP	X7 61	WHOI	30-07.95N	143-37.31W	g	AVON08MV
0557	250699	0	BTXP	X7 62	WHOI	30-14.78N	143-20.19W	g	AVON08MV
0746	250699	0	BTXP	X7 63	WHOI	30-22.65N	143-00.29W	g	AVON08MV
1222	250699	0	BTXP	X7 64	WHOI	30-28.24N	142-45.94W	g	AVON08MV
1354	250699	0	BTXP	X7 65	WHOI	30-34.99N	142-28.64W	g	AVON08MV
1524	250699	0	BTXP	X7 66	WHOI	30-41.66N	142-11.39W	g	AVON08MV
1648	250699	0	BTXP	X7 67	WHOI	30-48.14N	141-54.47W	g	AVON08MV
1814	250699	0	BTXP	X7 68	WHOI	30-54.81N	141-36.84W	g	AVON08MV
1938	250699	0	BTXP	X7 69	WHOI	31-01.44N	141-19.27W	g	AVON08MV

#	GMT DATE	DDMMYY	TZ	SAMP CODE	B E	SAMPLE IDENTIFIER	DISP CODE	LATITUDE	LONGITUDE	p c	CRUISE LEG-SHIP
0412	260699	0		BTXP		X7 73	WHOI	31-27.02N	140-09.87W	g	AVON08MV
0543	260699	0		BTXP		X7 74	WHOI	31-33.32N	139-52.27W	g	AVON08MV
0714	260699	0		BTXP		X7 75	WHOI	31-39.67N	139-34.71W	g	AVON08MV
0835	260699	0		BTXP		X7 76	WHOI	31-45.10N	139-18.83W	g	AVON08MV
0848	260699	0		BTXP		X7 84	WHOI	31-46.22N	139-16.38W	g	AVON08MV
1010	260699	0		BTXP		X7 85	WHOI	31-51.77N	139-00.36W	g	AVON08MV
1020	260699	0		BTXP		X7 77	WHOI	31-52.42N	138-58.52W	g	AVON08MV
1158	260699	0		BTXP		X7 78	WHOI	31-58.75N	138-39.85W	g	AVON08MV
1322	260699	0		BTXP		X7 79	WHOI	32-04.61N	138-23.35W	g	AVON08MV
1454	260699	0		BTXP		X7 80B	WHOI	32-11.00N	138-04.75W	g	AVON08MV
1622	260699	0		BTXP		X7 81B	WHOI	32-16.99N	137-47.07W	g	AVON08MV
1744	260699	0		BTXP		X7 82	WHOI	32-22.55N	137-30.51W	g	AVON08MV
1913	260699	0		BTXP		X7 83	WHOI	32-28.57N	137-12.47W	g	AVON08MV
0825	270699	0		BTXP		X7 90	WHOI	33-09.07N	135-06.15W	g	AVON08MV
0837	270699	0		BTXP		X7 90B	WHOI	33-09.82N	135-03.59W	g	AVON08MV
0955	270699	0		BTXP		X7 91	WHOI	33-14.93N	134-47.11W	g	AVON08MV
1120	270699	0		BTXP		X7 92	WHOI	33-20.37N	134-29.21W	g	AVON08MV
1246	270699	0		BTXP		X7 93	WHOI	33-25.83N	134-11.21W	g	AVON08MV
2250	270699	0		BTXP		X7 94	WHOI	33-31.29N	133-52.98W	g	AVON08MV
0020	280699	0		BTXP		X7 95	WHOI	33-36.79N	133-34.39W	g	AVON08MV
0150	280699	0		BTXP		X7 96	WHOI	33-42.27N	133-15.69W	g	AVON08MV
0316	280699	0		BTXP		X7 97	WHOI	33-47.44N	132-57.76W	g	AVON08MV
0444	280699	0		BTXP		X7 98	WHOI	33-52.76N	132-39.23W	g	AVON08MV
0611	280699	0		BTXP		X7 99	WHOI	33-57.97N	132-20.93W	g	AVON08MV
0740	280699	0		BTXP		X7 100	WHOI	34-03.20N	132-02.26W	g	AVON08MV
0910	280699	0		BTXP		X7 101	WHOI	34-08.38N	131-43.53W	g	AVON08MV
0935	280699	0		BTXP		X7 107	WHOI	34-09.89N	131-38.36W	g	AVON08MV
1045	280699	0		BTXP		X7 102	WHOI	34-13.83N	131-23.68W	g	AVON08MV
1208	280699	0		BTXP		X7 103	WHOI	34-18.47N	131-06.32W	g	AVON08MV
1703	280699	0		BTXP		X7 104	WHOI	34-23.55N	130-47.57W	g	AVON08MV
1833	280699	0		BTXP		X7 105	WHOI	34-28.47N	130-28.91W	g	AVON08MV
2010	280699	0		BTXP		X7 106	WHOI	34-33.70N	130-09.20W	g	AVON08MV
0627	290699	0		BTXP		X7 112	WHOI	35-01.95N	128-16.63W	g	AVON08MV
0745	290699	0		BTXP		X7 118	WHOI	35-02.90N	128-12.56W	g	AVON08MV
0915	290699	0		BTXP		X7 119	WHOI	35-02.91N	128-12.56W	g	AVON08MV
1110	290699	0		BTXP		X7 113	WHOI	35-06.54N	127-57.30W	g	AVON08MV
1239	290699	0		BTXP		X7 114	WHOI	35-11.02N	127-38.39W	g	AVON08MV
1408	290699	0		BTXP		X7 115	WHOI	35-15.55N	127-19.19W	g	AVON08MV
1535	290699	0		BTXP		X7 116	WHOI	35-19.96N	127-00.17W	g	AVON08MV
1820	290699	0		BTXP		X7 117	WHOI	35-24.32N	126-40.93W	g	AVON08MV
2240	290699	0		BTXP		X7 120	WHOI	35-37.18N	125-43.12W	g	AVON08MV
0431	300699	0		BTXP		X7 122	WHOI	35-45.41N	125-04.65W	g	AVON08MV
0557	300699	0		BTXP		X7 123	WHOI	35-49.53N	124-45.05W	g	AVON08MV
0722	300699	0		BTXP		X7 124	WHOI	35-53.53N	124-25.53W	g	AVON08MV
0830	300699	0		BTXP		X7 125	WHOI	35-56.77N	124-10.17W	g	AVON08MV
1140	300699	0		BTXP		X7 126	WHOI	36-01.42N	123-46.67W	g	AVON08MV
1305	300699	0		BTXP		X7 127	WHOI	36-05.25N	123-27.33W	g	AVON08MV
1427	300699	0		BTXP		X7 128	WHOI	36-08.93N	123-07.87W	g	AVON08MV
1549	300699	0		BTXP		X7 129	WHOI	36-12.79N	122-48.45W	g	AVON08MV

#

End Sample Index

AVON08MV