

**REPORT AND INDEX OF  
UNDERWAY MARINE GEOPHYSICAL DATA**

**WESTWARD EXPEDITION**

**LEG 4**

**(WEST04MV)**

**(WOCE P21 West Part)**

**R/V MELVILLE**

**(Issued July 1994)**

**Ports:**

Iquique, Chile (27 March 1994)

to

Papeete, Tahiti (13 May 1994)

**Chief Scientist:**

Michael McCartney (Woods Hole)

Resident Marine Technician - Gene Pillard

Computer Technician - Ronald Moe

Post-Cruise Processing and Report Preparation by the  
Geological Data Center, Scripps Institution of Oceanography  
La Jolla, California 92093-0223

Data Collection and Processing Funded by:  
NSF OCE94-00707

**NOTE:** *This is an index of underway geophysical data edited and processed after the completion of the cruise leg and is intended primarily for informal use within the institution. This document is not to be reproduced or distributed outside Scripps without prior approval of the chief scientist or the Geological Data Center, Scripps Institution of Oceanography, La Jolla, California 92093-0223*

GDC Cruise I.D.# 266

**REPORT AND INDEX OF NAVIGATION  
AND UNDERWAY GEOPHYSICAL DATA**

Processed by the Geological Data Center  
Scripps Institution of Oceanography

**Contents:**

**Index Chart** - gives track of cruise leg, dates, ports, and mileage of each type of data collected.

**Track Charts** - annotated with dates and hour ticks.

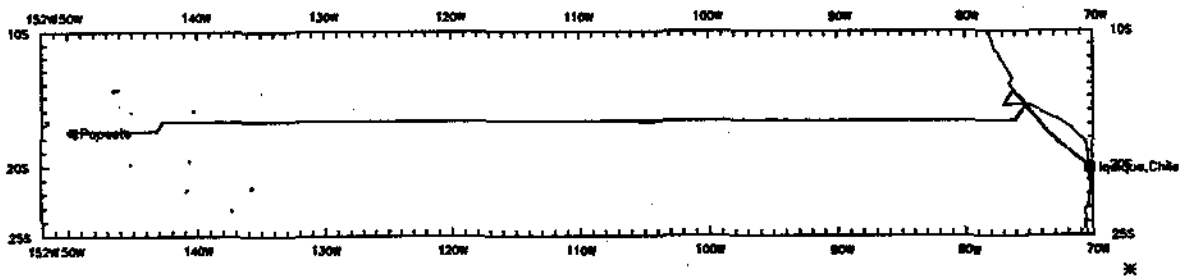
**Profiles** - depth, magnetic and gravity free air anomaly vs. distance. (Sections of track with seismic reflection data have a wide black line along the bottom of the profile.)

**Sample Index** - list of begin/end times and positions of all underway records as well as samples and measurements from other disciplines if collected on the cruise leg.

**NOTE:** One or more of the underway data types may not be collected on a given cruise leg. For information on the availability and reproduction costs of data in the following forms, contact S.M. Smith, Curator, Geological Data Center, Scripps Institution of Oceanography, La Jolla, California 92093-0223.

Phone: (619)534-2752, FAX: (619)534-5306, Internet email: ssmith@ucsd.edu

1. Files on Exabyte, DAT or 1/2 inch magnetic tape:
  - a) Separate time series ASCII files of navigation, single beam depth, gravity and magnetics.
  - b) These same data in a merged ASCII file in the MGD77 Exchange Format.
  - c) SeaBeam depth data (binary, Sun byte order) in SIO Swath Bathymetry Format (not available on 1/2" tape).
  - d) SeaBeam Sidescan data (not available on 1/2" tape).
2. Microfilm (35 mm flowfilm) or hard copies of:
  - a) Underway watch log book
  - b) SeaBeam vertical beam profile/Sidescan records.
  - c) Echosounder records - 3.5 kHz frequency.
  - d) Magnetometer records.
  - e) Seismic reflection profiler records.
3. Navigation listing with times and positions of fixes and course and speed changes.
4. Plots:
  - a) Copies of archived track plots.
  - b) Copies of archived SeaBeam contour plots.
  - c) Custom plots in Mercator projection:
    - 1) Track plots.
    - 2) SeaBeam depth contour plots.
    - 3) Depth, magnetic or gravity values printed or profiled along track.



**WESTWARD EXPEDITION LEG 4**  
 =====

**CHIEF SCIENTIST: Michael McCartney, Woods Hole**

**PORTS: Iquique, Chile - Papeete, Tahiti**

**DATES: 27 March - 13 May 1994**

**SHIP: R/V Melville**

**TOTAL MILEAGE OF UNDERWAY DATA COLLECTED**

**Cruise - 6577 miles**

**Magnetics - none collected**

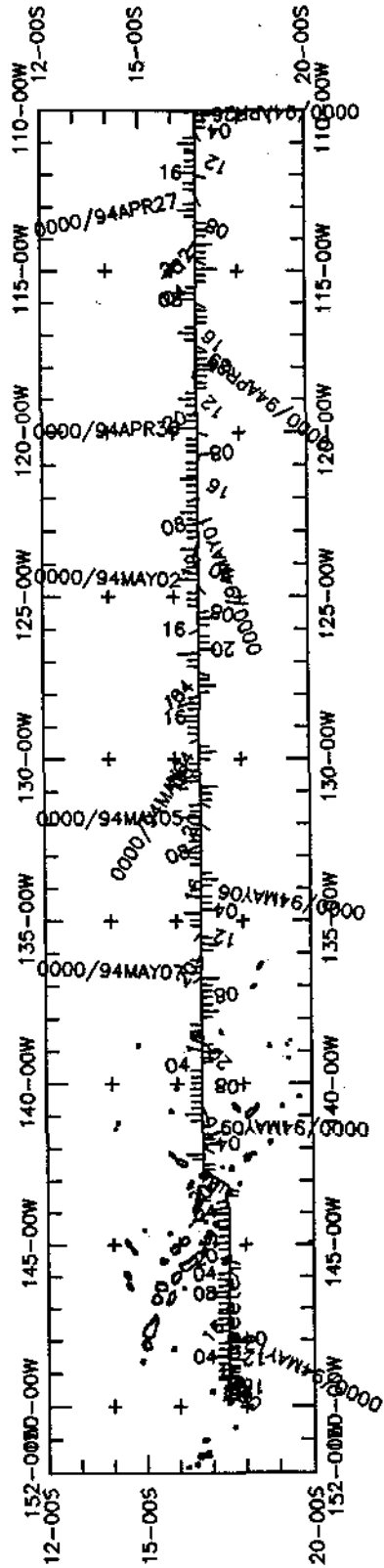
**Bathymetry - 6332 miles**

**Seismic Reflection - none collected**

**Sea Beam - 6322 miles**

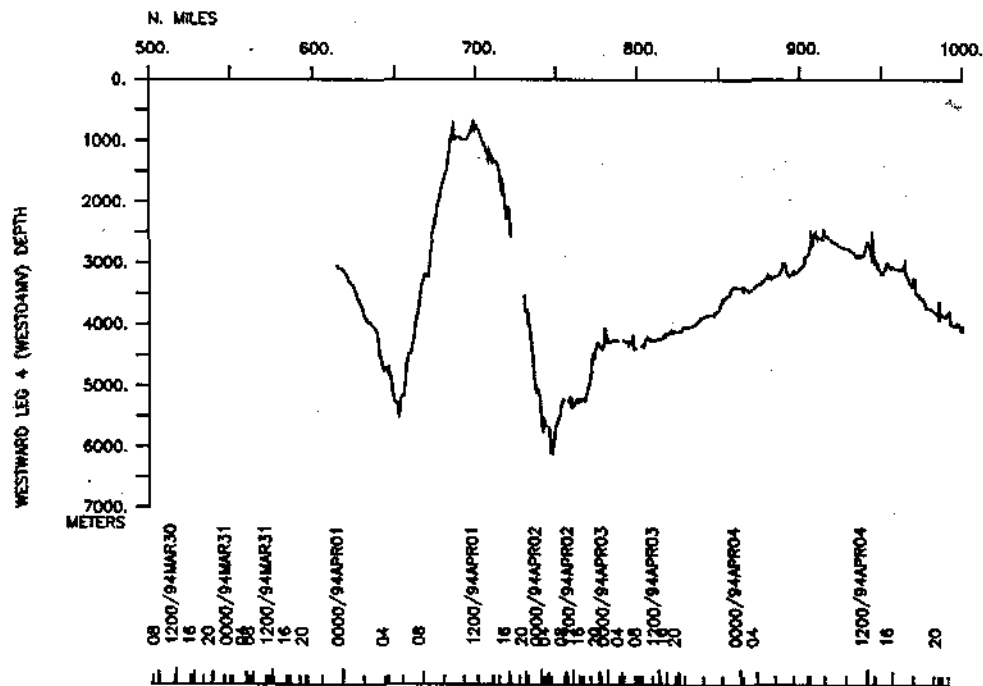
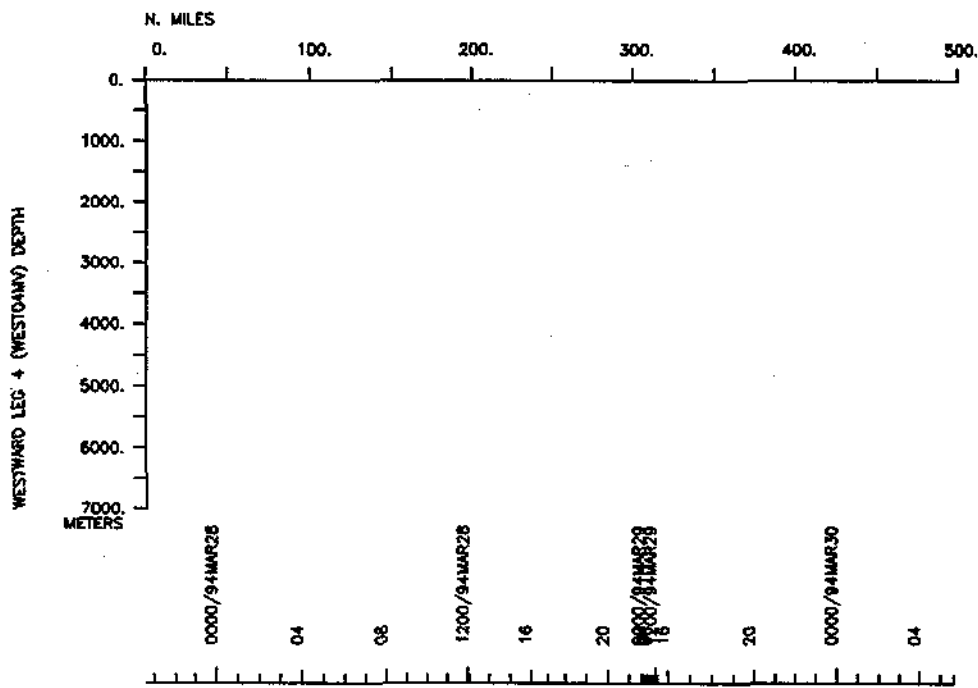
**Gravity - none collected**

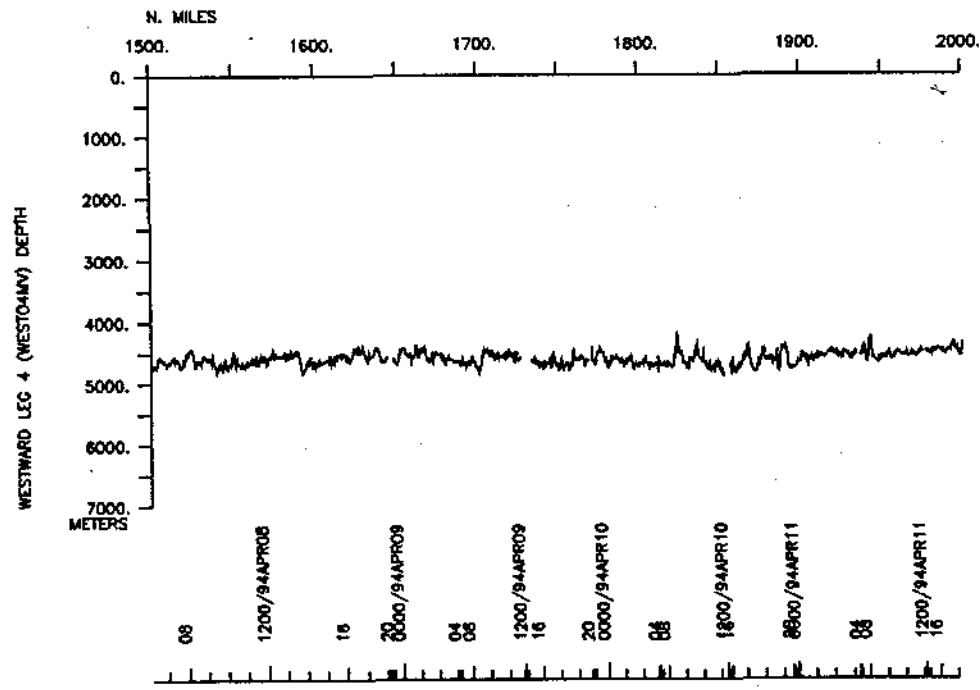
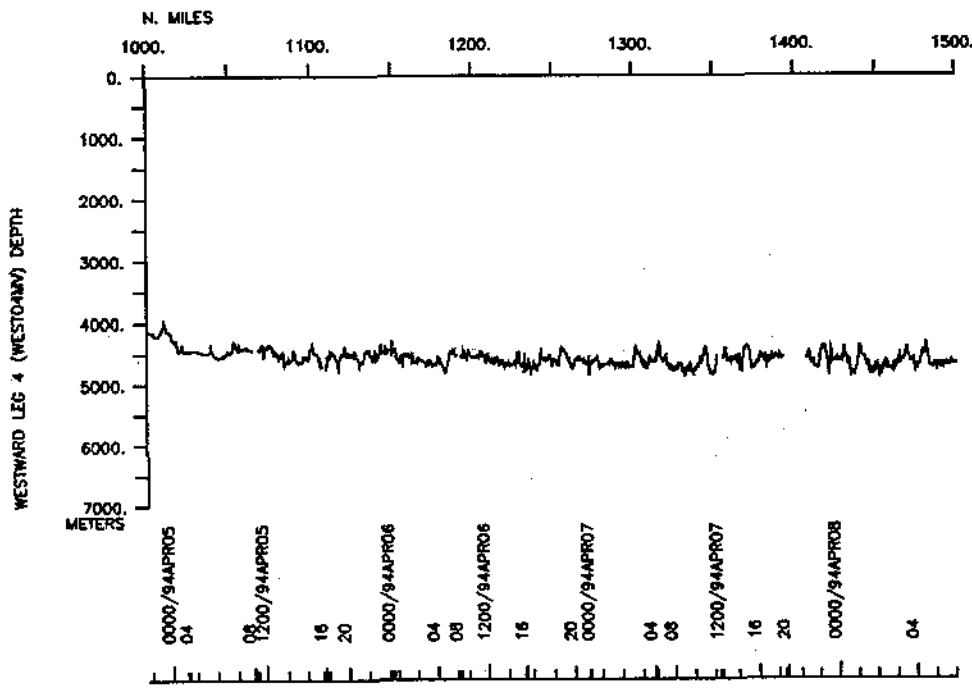


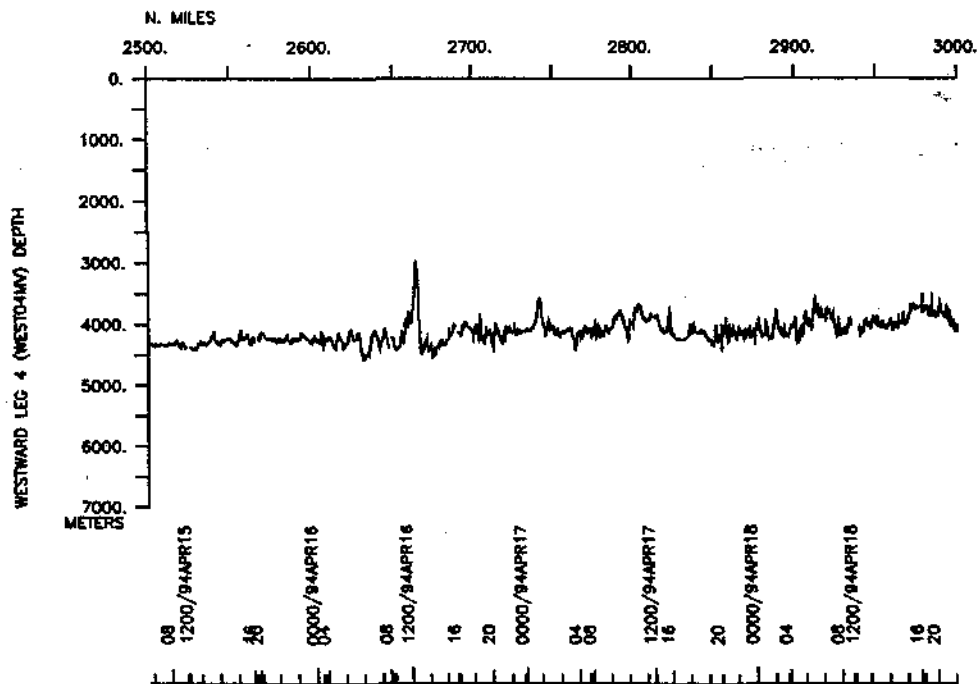
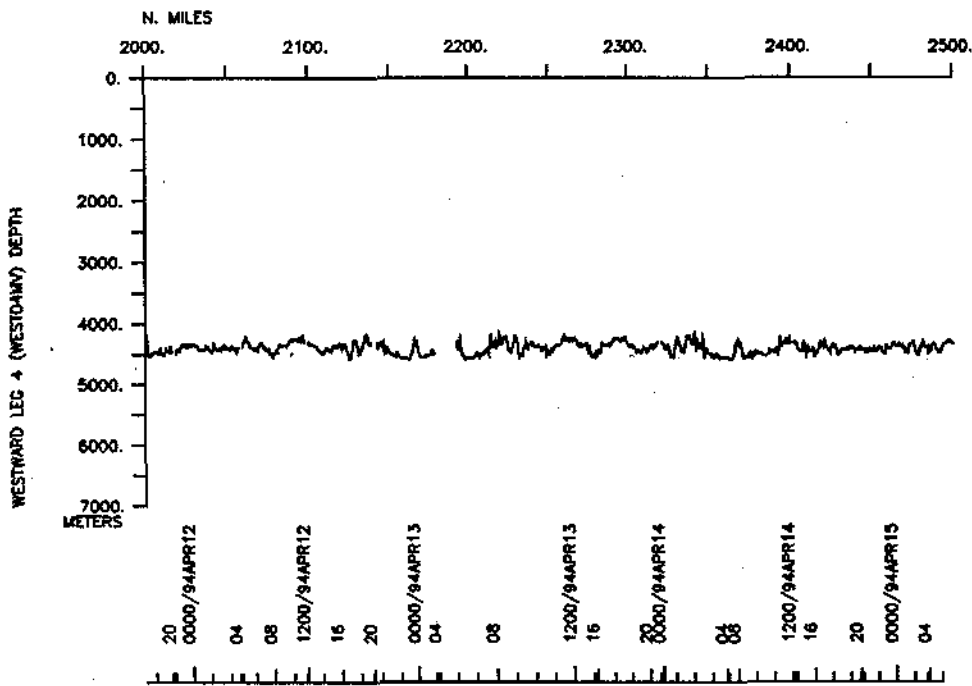


WESTWARD LEG 4 (WEST04MV)  
Track 2 of 2

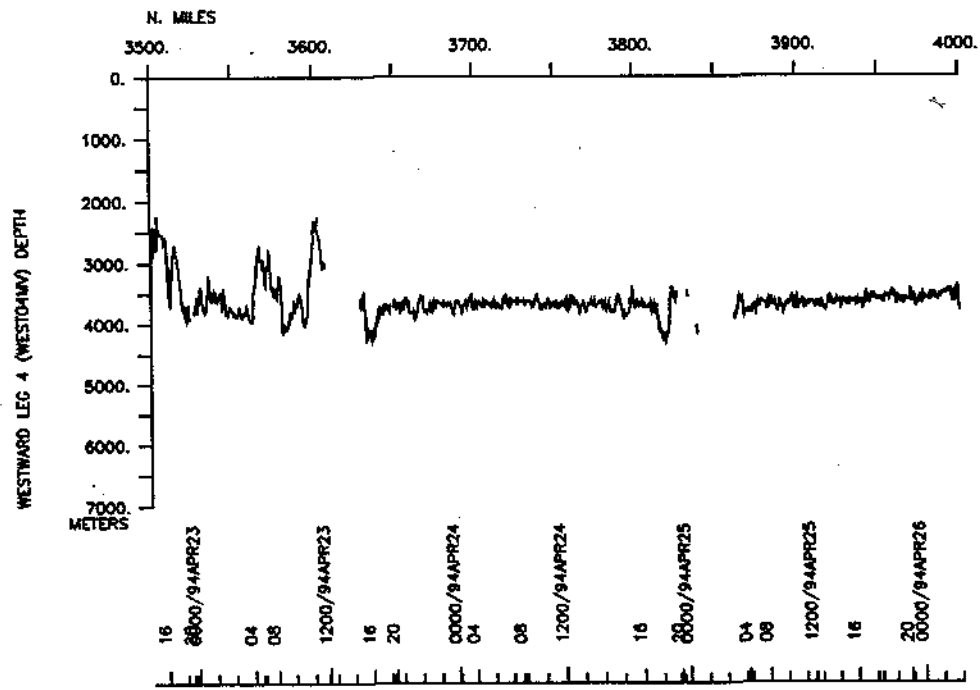
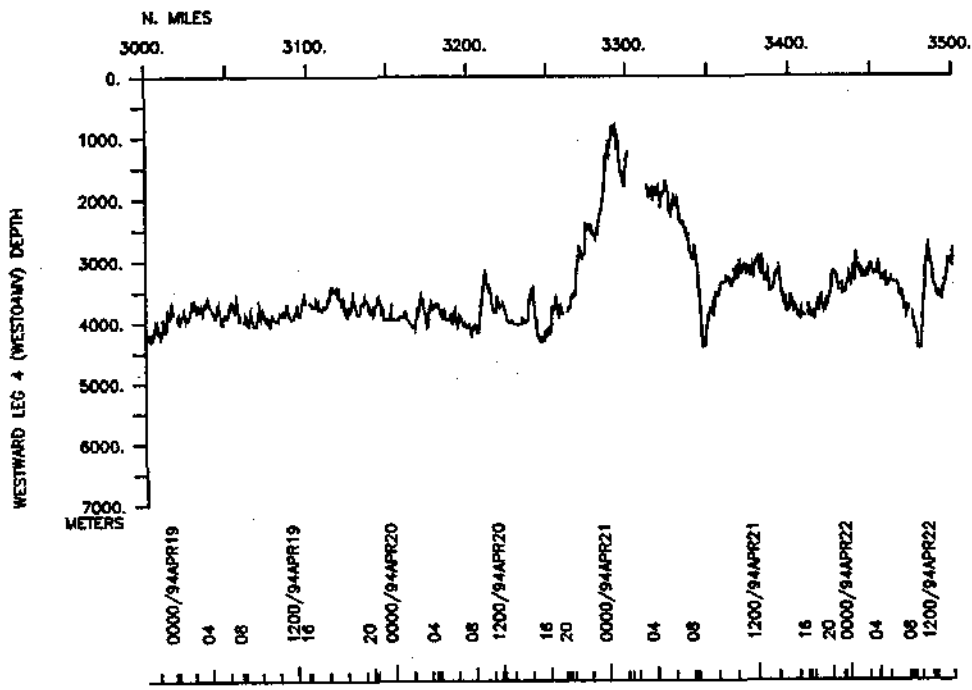
\*

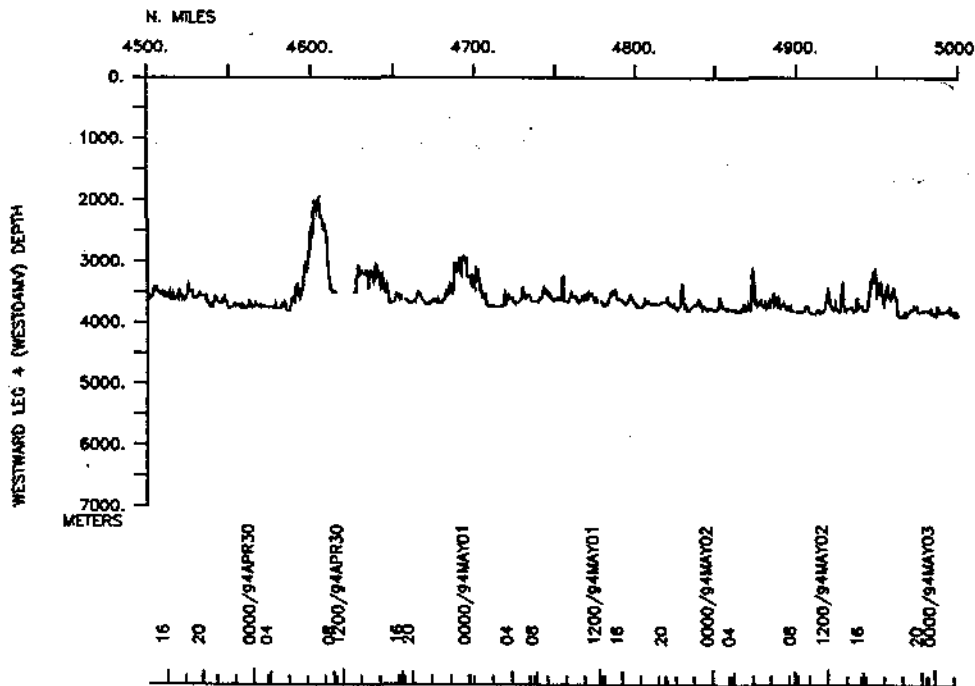
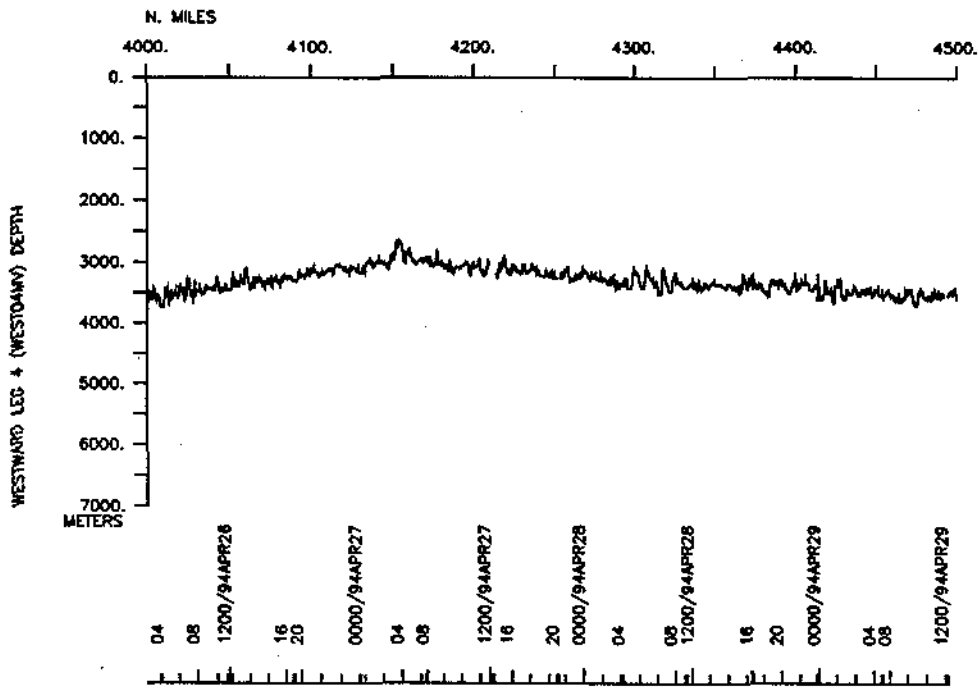


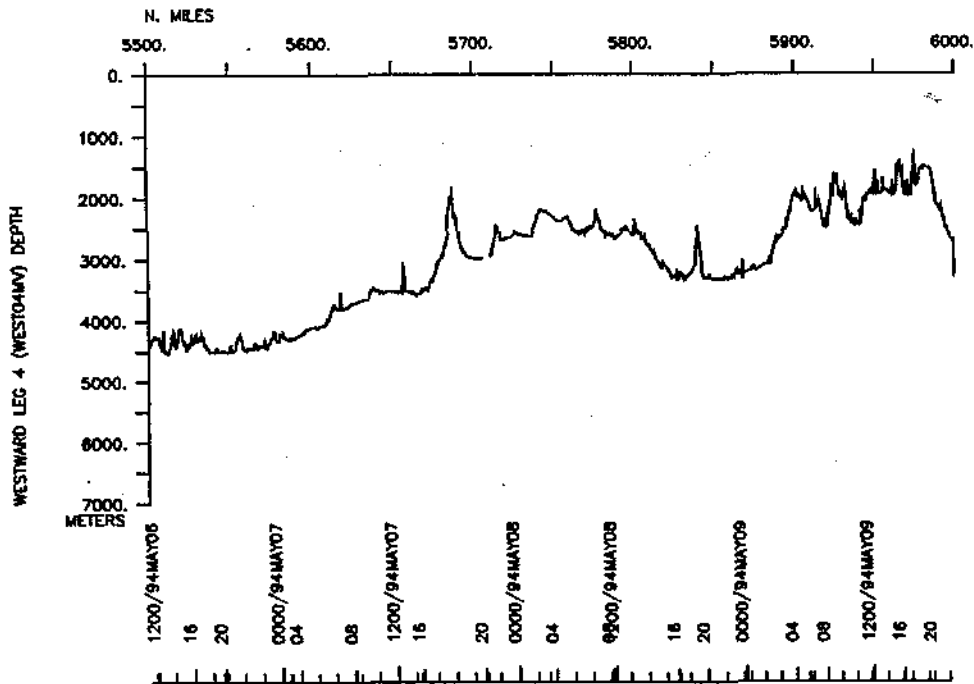
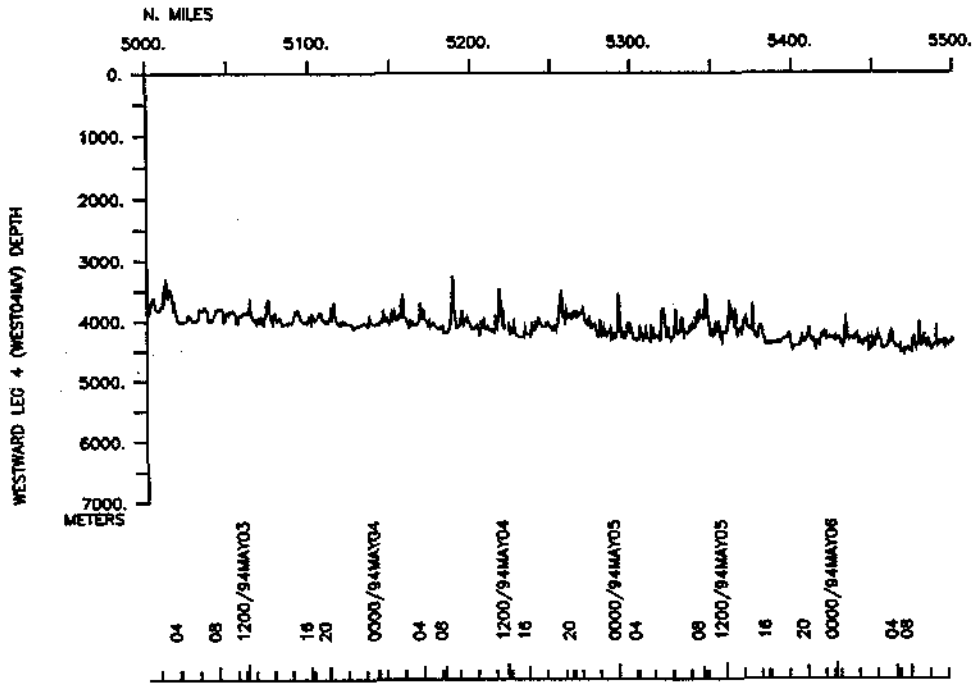


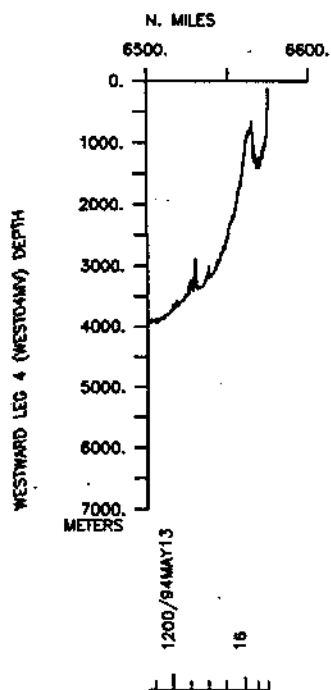
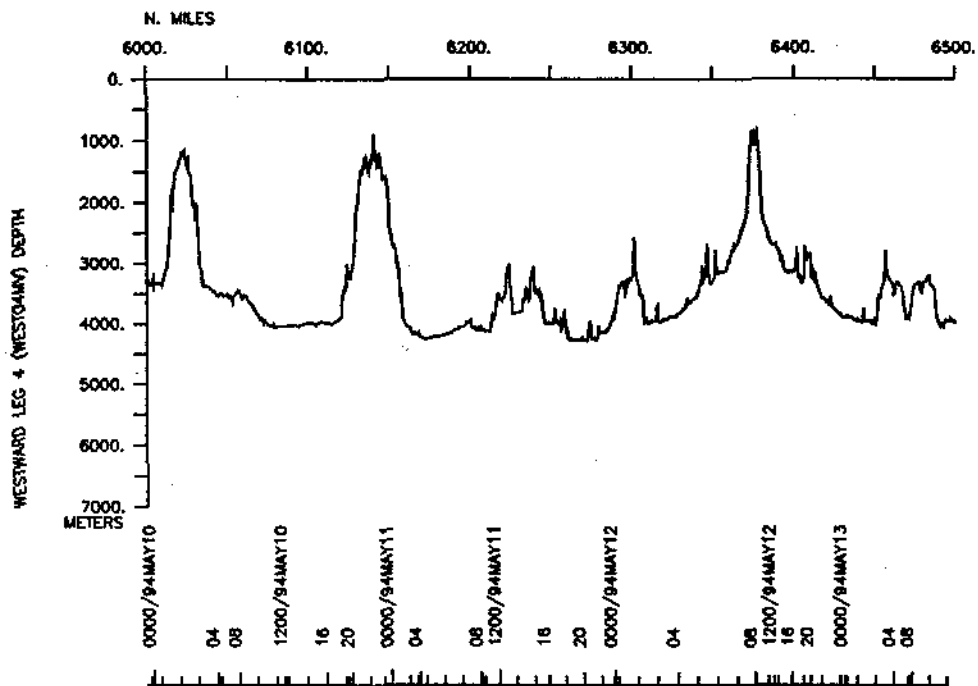












**S.I.O. SAMPLE INDEX**

**(Issued July 1994)**

**WESTWARD EXPEDITION**

Leg 4 (WEST04MV)

(WOCE P21 West Part)

R/V Melville

Iquique, Chile (27 March 1994)

to

Papeete, Tahiti (13 May 1994)

**Chief Scientist:**

Michael McCartney (Woods Hole)

*The Sample Index is a first level interdisciplinary listing of time, position, sample identification and disposition of all samples, records and measurements collected on this cruise leg. The index data are encoded at sea by the resident marine technician and processed on shore by the S.I.O. Geological Data Center shortly after the completion of the cruise leg.*

*Positions are interpolated on the basis of sample time by comparison to a single, edited navigation file. Samples beginning at one time and position and ending at another are entered on two consecutive lines. Disposition and sample type are represented by three and four character codes to permit future computer searches on these parameters. (Listings defining these codes are available from the Geological Data Center.)*

**GDC Cruise I.D.# 266**

\*\*\*\* Ports \*\*\*

2000	270394	4	LGPT B	Iquique, Chile	20-12.00S	070-10.00W	f	WEST04MV
1830	130594	10	LGPT E	Papeete, Tahiti	17-32.00S	148-34.00W	f	WEST04MV

\*\*\*\* Personnel \*\*\*

#	*****NAME*****	*****TITLE*****	*****AFFILIATION*****	**CRID**
PECS WHO	McCartney, M.	Chief Scientist	Woods Hole	WEST04MV
PESP OSU	Azevedo, S.	ADCP Tech	Oregon State Univ.	WEST04MV
PEVL WHO	Bennett, P.	Volntr WtStndr	Woods Hole	WEST04MV
PEVL WHO	Bouchard, G.	Volntr Tech	Woods Hole	WEST04MV
PESP SIX	Campbell, D.	CO2 Tech	Univ. of Miami	WEST04MV
PESP OSU	Carbonell-Moore, C.	Nutrient Tech	Oregon State Univ.	WEST04MV
PEST SIX	Coles, V.	Grad Student	Univ. of Miami	WEST04MV
PESP SIX	Cunningham, S.	Technician	James Rennell Ctr	WEST04MV
PESP SIX	Edwards, C.	CO2 Tech	Univ. of Miami	WEST04MV
PESP SIX	Goen, J.	Student (CO2)	Univ. of Miami	WEST04MV
PESP WHO	Goepfert, L.	LCTD Tech	Woods Hole	WEST04MV
PESP OSU	Jennings, J.	Nutrient Tech	Oregon State Univ.	WEST04MV
PESP WHO	Knapp, G.	Sal/Oxy Analyst	Woods Hole	WEST04MV
PESP WHO	Landry, P.	Tritium Tech	Woods Hole	WEST04MV
PESP UCC	Low, C.	H2O Sampling	U.of Cal.Santa Cruz	WEST04MV
PECT STS	Moe, R.	Computer Tech	Scripps Institution	WEST04MV
PESP SIX	Paz, J.	Peruvian Obsrvr	Dir. of Hydro & Nav	WEST04MV
PERT STS	Pillard, G.	Resident Tech	Scripps Institution	WEST04MV
PESP SIX	Rosenberg, M.	Technician	CSIRO/Hobert, Aust.	WEST04MV
PESP ODF	Schmitt, J.	Elect Tech	Scripps Institution	WEST04MV
PESP SIX	Sullivan, K.	CFC Tech	Univ. of Miami	WEST04MV
PESP WHO	Swartz, M.	CTD Tech	Woods Hole	WEST04MV
PESP WHO	Turner, T.	Sal/Oxy Analyst	Woods Hole	WEST04MV
PESP SIX	Willey, D.	CFC Tech	Univ. of Miami	WEST04MV
PESP WHO	Zimmermann, S.	Data Analyst	Woods Hole	WEST04MV

\*\*\*\* NOTES \*\*\*

#An 'X' in the (B)egin/(E)nd column following the sample code indicates no  
#sample or data recovered. A 'C' indicates continuation of data collection  
#from before the beginning or after the end of a particular leg, (moored  
#bottom instruments, for example.) The number appearing in the columns  
#between the sample identifier and the disposition code, for many sample  
#entries, is the water depth in corrected meters. Positions are in tenths  
#of minutes.

#GMT	DDMMYY	SAMP	B	SAMPLE	DISP		P	CRUISE
#TIME	DATE	TZ	CODE	E IDENTIFIER	CODE	LATITUDE	LONGITUDE	c LEG-SHIP
#*** Underway data curator - S. M. Smith ext. 42752								
#*** No Underway Log books ***								
#*** Hydrocasts - Samples were split between Woods Hole and U. of Miami(SIX)***								
2207	280394		HCNI	B CTD #1	TCO2, WHO	16-53.19S	074-08.09W	g WEST04MV
0158	290394		HCNI	E S N	5660m WHO	16-52.02S	074-08.32W	g WEST04MV
0442	290394		HCNI	B CTD #2	WHO	16-51.71S	074-08.64W	g WEST04MV
0912	290394		HCNI	E S N	5693m WHO	16-51.21S	074-09.39W	g WEST04MV
1112	290394		HCNI	B CTD #3	TCO2, WHO	16-50.50S	074-10.60W	g WEST04MV
1529	290394		HCNI	E SON	5570m WHO	16-49.89S	074-10.88W	g WEST04MV
0557	300394		HCNI	B CTD #4	WHO	14-30.04S	076-09.82W	g WEST04MV
0621	300394		HCNI	E SON	114m WHO	14-30.03S	076-10.00W	g WEST04MV
0817	300394		HCNI	B CTD #5	CFC WHO	14-37.44S	076-14.91W	g WEST04MV
0848	300394		HCNI	E He, H3, SON	195m WHO	14-37.29S	076-14.92W	g WEST04MV
1015	300394		HCNI	B CTD #6	CFC, TCO2, WHO	14-44.97S	076-19.94W	g WEST04MV
1158	300394		HCNI	E SON	1730m WHO	14-44.84S	076-19.06W	g WEST04MV
1337	300394		HCNI	B CTD #7	WHO	14-52.53S	076-24.87W	g WEST04MV
1619	300394		HCNI	E SON	3232m WHO	14-52.16S	076-24.06W	g WEST04MV
1744	300394		HCNI	B CTD #8	CFC, TCO2, WHO	14-59.97S	076-30.09W	g WEST04MV
2114	300394		HCNI	E He, H3, SON,	4312m WHO	14-58.88S	076-31.10W	g WEST04MV
2330	300394		HCNI	B CTD #9	WHO	15-07.24S	076-34.81W	g WEST04MV
0301	310394		HCNI	E SON	4121m WHO	15-07.80S	076-34.41W	g WEST04MV
0502	310394		HCNI	B CTD #10	CFC, TCO2, WHO	15-14.80S	076-40.07W	g WEST04MV
0759	310394		HCNI	E SON, TALK, 3600m	WHO	15-13.95S	076-40.71W	g WEST04MV
1004	310394		HCNI	B CTD #11	WHO	15-22.50S	076-45.05W	g WEST04MV
1246	310394		HCNI	E SON	3040m WHO	15-22.38S	076-45.48W	g WEST04MV
1417	310394		HCNI	B CTD #12	CFC WHO	15-30.01S	076-50.00W	g WEST04MV
1710	310394		HCNI	E He, H3, SON	2910m WHO	15-29.99S	076-50.19W	g WEST04MV
1922	310394		HCNI	B CTD #13	CFC, TCO2, WHO	15-36.96S	076-55.10W	g WEST04MV
2206	310394		HCNI	E SON	2855m WHO	15-36.27S	076-55.52W	g WEST04MV
0308	010494		HCNI	B CTD #13-2	CFC WHO	15-33.73S	076-06.95W	g WEST04MV
0607	010494		HCNI	E SO TALK, 4723m	WHO	15-34.04S	076-06.11W	g WEST04MV
1056	010494		HCNI	B CTD #14	WHO	15-29.99S	075-09.98W	g WEST04MV
1157	010494		HCNI	E SON	0740m WHO	15-30.00S	075-10.36W	g WEST04MV
1307	010494		HCNI	B CTD #15	CFC, TCO2, WHO	15-37.58S	075-15.12W	g WEST04MV
1432	010494		HCNI	E SON, TALK, 1153m	WHO	15-38.03S	075-14.79W	g WEST04MV
1548	010494		HCNI	B CTD #16	WHO	15-44.96S	075-19.88W	g WEST04MV
1801	010494		HCNI	E SON	2195m WHO	15-45.23S	075-19.10W	g WEST04MV
1952	010494		HCNI	B CTD #17	CFC, TCO2, WHO	15-52.66S	075-24.73W	g WEST04MV
2312	010494		HCNI	E SON	3745m WHO	15-53.10S	075-25.04W	g WEST04MV
0127	020494		HCNI	B CTD #18	CFC WHO	16-00.01S	075-30.01W	g WEST04MV
0544	020494		HCNI	E SON	5695m WHO	16-00.87S	075-29.42W	g WEST04MV
0732	020494		HCNI	B CTD #19	CFC, TCO2, WHO	16-07.60S	075-35.39W	g WEST04MV
1121	020494		HCNI	E SON, TALK, 5130m	WHO	16-07.53S	075-35.04W	g WEST04MV
1415	020494		HCNI	B CTD #20	CFC WHO	16-07.56S	075-35.06W	g WEST04MV
1819	020494		HCNI	E SON	5130m WHO	16-07.65S	075-34.47W	g WEST04MV
2003	020494		HCNI	B CTD #21	CFC WHO	16-14.92S	075-40.04W	g WEST04MV
2333	020494		HCNI	E SON	4270m WHO	16-13.82S	075-40.22W	g WEST04MV
0121	030494		HCNI	B CTD #22	CFC, TCO2, WHO	16-22.37S	075-45.11W	g WEST04MV

0446	030494	HCNI E	SON, TALK, 4185m	WHO	16-22.95S	075-45.37W	g	WEST04MV	
0640	030494	HCNI B	CTD #23 CFC	WHO	16-29.62S	075-50.61W	g	WEST04MV	
0959	030494	HCNI E	He, H3, SON	4325m	WHO	16-28.84S	075-51.93W	g	WEST04MV
1145	030494	HCNI B	CTD #24 CFC	WHO	16-37.44S	075-55.09W	g	WEST04MV	
1529	030494	HCNI E	SON	4155m	WHO	16-37.93S	075-55.71W	g	WEST04MV
1703	030494	HCNI B	CTD #25 CFC, TCO2,	WHO	16-44.77S	076-00.23W	g	WEST04MV	
2025	030494	HCNI E	SON	4075m	WHO	16-44.12S	076-01.06W	g	WEST04MV
0011	040494	HCNI B	CTD #26 CFC	WHO	16-44.98S	076-40.15W	g	WEST04MV	
0308	040494	HCNI E	He, H3, SON	3330m	WHO	16-44.74S	076-39.87W	g	WEST04MV
0656	040494	HCNI B	CTD #27 CFC	WHO	16-44.80S	077-20.18W	g	WEST04MV	
0909	040494	HCNI E	SON	2800m	WHO	16-45.14S	077-20.44W	g	WEST04MV
1226	040494	HCNI B	CTD #28 CFC, TCO2,	WHO	16-44.77S	078-00.04W	g	WEST04MV	
1503	040494	HCNI E	He, H3, SON, TALK,	2723m	WHO	16-44.92S	077-59.94W	g	WEST04MV
1820	040494	HCNI B	CTD #29 CFC	WHO	16-45.02S	078-40.13W	g	WEST04MV	
2132	040494	HCNI E	SON	3728m	WHO	16-45.29S	078-40.37W	g	WEST04MV
0056	050494	HCNI B	CTD #30 CFC	WHO	16-45.10S	079-20.24W	g	WEST04MV	
0429	050494	HCNI E	SON	4367m	WHO	16-44.64S	079-20.77W	g	WEST04MV
0756	050494	HCNI B	CTD #31 CFC, TCO2,	WHO	16-44.98S	080-00.05W	g	WEST04MV	
1112	050494	HCNI E	He, H3, SON, TALK,	4360m	WHO	16-44.78S	079-59.38W	g	WEST04MV
1452	050494	HCNI B	CTD #32 CFC	WHO	16-44.87S	080-40.11W	g	WEST04MV	
1839	050494	HCNI E	SON	4635m	WHO	16-44.38S	080-40.32W	g	WEST04MV
2215	050494	HCNI B	CTD #33 CFC, TCO2,	WHO	16-44.93S	081-20.03W	g	WEST04MV	
0138	060494	HCNI E	SON, TALK, 4354m	WHO	16-44.91S	081-20.04W	g	WEST04MV	
0724	060494	HCNI B	CTD #34-2 CFC	WHO	16-44.65S	082-00.19W	g	WEST04MV	
0854	060494	HCNI E	SON	4260m	WHO	16-44.52S	082-00.26W	g	WEST04MV
1353	060494	HCNI B	CTD #35 CFC, TCO2,	WHO	16-44.94S	082-40.10W	g	WEST04MV	
1731	060494	HCNI E	SON, TALK, 4520m	WHO	16-45.00S	082-40.21W	g	WEST04MV	
2050	060494	HCNI B	CTD #36 CFC	WHO	16-45.06S	083-20.03W	g	WEST04MV	
0018	070494	HCNI E	He, H3, SON	4613m	WHO	16-45.06S	083-19.88W	g	WEST04MV
0344	070494	HCNI B	CTD #37 CFC, TCO2,	WHO	16-44.94S	084-00.09W	g	WEST04MV	
0650	070494	HCNI E	SON, TALK, 4549m	WHO	16-44.93S	084-00.09W	g	WEST04MV	
1023	070494	HCNI B	CTD #38 CFC	WHO	16-45.14S	084-40.11W	g	WEST04MV	
1402	070494	HCNI E	SON	4510m	WHO	16-45.11S	084-40.16W	g	WEST04MV
1727	070494	HCNI B	CTD #39 CFC, TCO2,	WHO	16-45.01S	085-20.15W	g	WEST04MV	
2110	070494	HCNI E	SON, TALK, 4502m	WHO	16-44.93S	085-20.30W	g	WEST04MV	
1815	080494	HCNI B	CTD #40 CFC	WHO	16-44.90S	081-00.14W	g	WEST04MV	
2330	080494	HCNI E	SON	4492m	WHO	16-44.35S	081-00.34W	g	WEST04MV
0311	090494	HCNI B	CTD #41 CFC, TCO2,	WHO	16-45.06S	081-40.12W	g	WEST04MV	
0702	090494	HCNI E	SON TALK, 4560m	WHO	16-44.96S	081-40.19W	g	WEST04MV	
1059	090494	HCNI B	CTD #42 CFC	WHO	16-45.04S	082-20.12W	g	WEST04MV	
1509	090494	HCNI E	SON	4470m	WHO	16-45.08S	082-20.20W	g	WEST04MV
1850	090494	HCNI B	CTD #43 CFC, TCO2,	WHO	16-45.12S	083-00.14W	g	WEST04MV	
2304	090494	HCNI E	SON	4547m	WHO	16-45.33S	083-00.05W	g	WEST04MV
0328	100494	HCNI B	CTD #44 CFC	WHO	16-44.98S	083-39.99W	g	WEST04MV	
0722	100494	HCNI E	SON	4600m	WHO	16-44.92S	083-40.00W	g	WEST04MV
1130	100494	HCNI B	CTD #45 CFC, TCO2,	WHO	16-45.18S	084-20.18W	g	WEST04MV	
1555	100494	HCNI E	SON TALK, 4770m	WHO	16-45.12S	084-20.50W	g	WEST04MV	
1943	100494	HCNI B	CTD #46 CFC	WHO	16-45.02S	085-00.18W	g	WEST04MV	
2341	100494	HCNI E	SON	4295m	WHO	16-45.04S	085-00.48W	g	WEST04MV
0328	110494	HCNI B	CTD #47 CFC, TCO2,	WHO	16-45.02S	085-40.07W	g	WEST04MV	
0717	110494	HCNI E	SON TALK, 4446m	WHO	16-44.94S	085-40.06W	g	WEST04MV	
1117	110494	HCNI B	CTD #48 CFC	WHO	16-45.11S	086-20.07W	g	WEST04MV	
1516	110494	HCNI E	He, H3, SON	4405m	WHO	16-45.12S	086-20.09W	g	WEST04MV
1859	110494	HCNI B	CTD #49 CFC, TCO2,	WHO	16-44.96S	086-59.99W	g	WEST04MV	
2251	110494	HCNI E	SON	4380m	WHO	16-44.54S	087-00.12W	g	WEST04MV
0234	120494	HCNI B	CTD #50 CFC	WHO	16-44.98S	087-40.15W	g	WEST04MV	



0604	120494	HCNI E	SON	4309m	WHO	16-44.95S	087-40.41W	g	WEST04MV
0949	120494	HCNI B	CTD #51	CFC, TCO2,	WHO	16-45.02S	088-20.01W	g	WEST04MV
1406	120494	HCNI E	SON	Talk, 4205m	WHO	16-44.85S	088-20.26W	g	WEST04MV
1746	120494	HCNI B	CTD #52	CFC	WHO	16-45.08S	089-00.12W	g	WEST04MV
2128	120494	HCNI E	SON	4260m	WHO	16-45.16S	089-00.16W	g	WEST04MV
0119	130494	HCNI B	CTD #53	CFC, TCO2,	WHO	16-45.23S	089-40.07W	g	WEST04MV
0459	130494	HCNI E	SON	4417m	WHO	16-45.29S	089-39.99W	g	WEST04MV
1316	130494	HCNI B	CTD #54	CFC	WHO	16-45.06S	088-00.00W	g	WEST04MV
1656	130494	HCNI E	SON	4445m	WHO	16-45.09S	088-00.13W	g	WEST04MV
2036	130494	HCNI B	CTD #55	CFC, TCO2,	WHO	16-45.07S	088-40.14W	g	WEST04MV
0003	140494	HCNI E	SON	4230m	WHO	16-45.02S	088-40.14W	g	WEST04MV
0351	140494	HCNI B	CTD #56	CFC	WHO	16-44.97S	089-20.16W	g	WEST04MV
0716	140494	HCNI E	SON	4475m	WHO	16-45.01S	089-20.13W	g	WEST04MV
1112	140494	HCNI B	CTD #57	CFC, TCO2,	WHO	16-45.08S	090-00.08W	g	WEST04MV
1445	140494	HCNI E	He, H3, SON	Talk, 4235m	WHO	16-45.10S	090-00.07W	g	WEST04MV
1835	140494	HCNI B	CTD #58	CFC	WHO	16-45.01S	090-40.05W	g	WEST04MV
2202	140494	HCNI E	SON	4345m	WHO	16-44.71S	090-40.12W	g	WEST04MV
0150	150494	HCNI B	CTD #59	CFC	WHO	16-45.04S	091-20.02W	g	WEST04MV
0513	150494	HCNI E	SON	4305m	WHO	16-44.95S	091-20.09W	g	WEST04MV
0859	150494	HCNI B	CTD #60	CFC, TCO2,	WHO	16-45.01S	092-00.11W	g	WEST04MV
1217	150494	HCNI E	He, H3, SON	Talk, 4300m	WHO	16-44.94S	092-00.11W	g	WEST04MV
1704	150494	HCNI B	CTD #61	CFC	WHO	16-45.01S	092-40.22W	g	WEST04MV
2035	150494	HCNI E	SON	4140m	WHO	16-44.39S	092-40.43W	g	WEST04MV
0028	160494	HCNI B	CTD #62	CFC	WHO	16-45.01S	093-20.11W	g	WEST04MV
0344	160494	HCNI E	SON	4170m	WHO	16-44.89S	093-19.45W	g	WEST04MV
0735	160494	HCNI B	CTD #63	CFC	WHO	16-45.12S	093-59.98W	g	WEST04MV
1040	160494	HCNI E	He, H3, SON	4297m	WHO	16-44.00S	093-58.49W	g	WEST04MV
1440	160494	HCNI B	CTD #64	CFC, TCO2,	WHO	16-44.96S	094-40.16W	g	WEST04MV
1804	160494	HCNI E	SON	4005m	WHO	16-43.49S	094-39.33W	g	WEST04MV
2145	160494	HCNI B	CTD #65	CFC	WHO	16-44.90S	095-20.02W	g	WEST04MV
0101	170494	HCNI E	SON	4023m	WHO	16-43.19S	095-19.92W	g	WEST04MV
0440	170494	HCNI B	CTD #66	CFC	WHO	16-45.28S	096-00.23W	g	WEST04MV
0744	170494	HCNI E	SON	4080m	WHO	16-44.46S	095-59.35W	g	WEST04MV
1135	170494	HCNI B	CTD #67	CFC	WHO	16-44.97S	096-39.77W	g	WEST04MV
1458	170494	HCNI E	SON	3795m	WHO	16-44.83S	096-38.84W	g	WEST04MV
1848	170494	HCNI B	CTD #68	CFC, TCO2,	WHO	16-44.99S	097-19.94W	g	WEST04MV
2206	170494	HCNI E	SON	4180m	WHO	16-43.85S	097-19.17W	g	WEST04MV
0148	180494	HCNI B	CTD #69	CFC	WHO	16-44.88S	097-59.92W	g	WEST04MV
0505	180494	HCNI E	He, H3, SON	4180m	WHO	16-43.95S	097-59.85W	g	WEST04MV
0849	180494	HCNI B	CTD #70	CFC, TCO2,	WHO	16-45.01S	098-39.99W	g	WEST04MV
1205	180494	HCNI E	SON	Talk, 3975m	WHO	16-43.17S	098-39.63W	g	WEST04MV
1553	180494	HCNI B	CTD #71	CFC	WHO	16-45.03S	099-20.06W	g	WEST04MV
1908	180494	HCNI E	SON	3650m	WHO	16-44.99S	099-20.12W	g	WEST04MV
2257	180494	HCNI B	CTD #72	CFC, TCO2,	WHO	16-45.06S	100-00.03W	g	WEST04MV
0157	190494	HCNI E	SON	3762m	WHO	16-45.09S	100-00.05W	g	WEST04MV
0545	190494	HCNI B	CTD #73	CFC	WHO	16-44.86S	100-40.03W	g	WEST04MV
0851	190494	HCNI E	SON	3903m	WHO	16-44.72S	100-40.08W	g	WEST04MV
1243	190494	HCNI B	CTD #74	CFC	WHO	16-45.05S	101-20.07W	g	WEST04MV
1554	190494	HCNI E	SON	3600m	WHO	16-45.05S	101-20.08W	g	WEST04MV
1931	190494	HCNI B	CTD #75	CFC	WHO	16-44.97S	101-59.92W	g	WEST04MV
2247	190494	HCNI E	He, H3, SON	3798m	WHO	16-45.19S	102-00.48W	g	WEST04MV
0244	200494	HCNI B	CTD #76	CFC	WHO	16-45.15S	102-39.65W	g	WEST04MV
0548	200494	HCNI E	SON	3639m	WHO	16-45.17S	102-39.73W	g	WEST04MV
0937	200494	HCNI B	CTD #77	CFC, TCO2,	WHO	16-44.88S	103-19.99W	g	WEST04MV
1317	200494	HCNI E	SON	Talk, 3632m	WHO	16-45.05S	103-20.02W	g	WEST04MV
1704	200494	HCNI B	CTD #78	CFC	WHO	16-45.01S	104-00.02W	g	WEST04MV

2043	200494	HCNI E	SON	3795m	WHO	16-44.93S	104-00.22W	g	WEST04MV
0117	210494	HCNI B	CTD #79	CFC	WHO	16-44.90S	104-40.02W	g	WEST04MV
0230	210494	HCNI E	SON	1082m	WHO	16-44.57S	104-40.34W	g	WEST04MV
0611	210494	HCNI B	CTD #80	CFC, TCO2,	WHO	16-45.01S	105-20.04W	g	WEST04MV
0844	210494	HCNI E	SON	Talk, 2923m	WHO	16-44.93S	105-20.09W	g	WEST04MV
1432	210494	HCNI B	CTD #81		WHO	16-55.04S	104-19.98W	g	WEST04MV
1840	210494	HCNI E	SON	3815m	WHO	16-54.94S	104-20.13W	g	WEST04MV
2040	210494	HCNI B	CTD #82	CFC	WHO	16-55.00S	104-40.02W	g	WEST04MV
2335	210494	HCNI E	SON	3415m	WHO	16-54.95S	104-40.09W	g	WEST04MV
0131	220494	HCNI B	CTD #83		WHO	16-55.18S	104-59.98W	g	WEST04MV
0420	220494	HCNI E	SON	3120m	WHO	16-55.27S	105-00.03W	g	WEST04MV
0615	220494	HCNI B	CTD #84	CFC	WHO	16-55.03S	105-20.29W	g	WEST04MV
0917	220494	HCNI E	SON	3643m	WHO	16-55.45S	105-20.53W	g	WEST04MV
1105	220494	HCNI B	CTD #980		WHO	16-44.93S	105-20.17W	g	WEST04MV
1348	220494	HCNI E	SON	2900m	WHO	16-45.14S	105-21.36W	g	WEST04MV
1729	220494	HCNI B	CTD #985		WHO	16-44.90S	106-00.02W	g	WEST04MV
2016	220494	HCNI E		3789m	WHO	16-45.20S	105-59.74W	g	WEST04MV
2147	220494	HCNI B	CTD #85-2	CFC	WHO	16-45.00S	106-00.15W	g	WEST04MV
0051	230494	HCNI E	He, H3, SON	3742m	WHO	16-45.15S	105-59.54W	g	WEST04MV
0432	230494	HCNI B	CTD #86	CFC, TCO2,	WHO	16-45.00S	106-40.11W	g	WEST04MV
0710	230494	HCNI E	SON	Talk, 2890m	WHO	16-44.97S	106-40.23W	g	WEST04MV
1054	230494	HCNI B	CTD #87	CFC	WHO	16-44.93S	107-20.08W	g	WEST04MV
1334	230494	HCNI E	SON	3072m	WHO	16-44.96S	107-20.10W	g	WEST04MV
1713	230494	HCNI B	CTD #88	CFC, TCO2,	WHO	16-45.08S	108-00.02W	g	WEST04MV
2027	230494	HCNI E	He, H3, SON	3668m	WHO	16-45.21S	108-00.11W	g	WEST04MV
0001	240494	HCNI B	CTD #89	CFC	WHO	16-45.10S	108-40.12W	g	WEST04MV
0258	240494	HCNI E	SON	3583m	WHO	16-45.16S	108-40.11W	g	WEST04MV
0648	240494	HCNI B	CTD #90	CFC, TCO2,	WHO	16-45.02S	109-20.07W	g	WEST04MV
0945	240494	HCNI E	SON	Talk, 3570m	WHO	16-45.15S	109-20.19W	g	WEST04MV
1903	240494	HCNI B	CTD #91	CFC	WHO	16-45.02S	107-40.11W	g	WEST04MV
2335	240494	HCNI E	SON	3405m	WHO	16-44.94S	107-40.11W	g	WEST04MV
0351	250494	HCNI B	CTD #92		WHO	16-44.97S	108-19.99W	g	WEST04MV
0641	250494	HCNI E	SON	3750m	WHO	16-44.80S	108-19.85W	g	WEST04MV
1037	250494	HCNI B	CTD #93		WHO	16-45.06S	109-00.10W	g	WEST04MV
1333	250494	HCNI E	SON	3583m	WHO	16-45.07S	109-00.13W	g	WEST04MV
2003	250494	HCNI B	CTD #95	CFC, TCO2,	WHO	16-44.89S	109-59.97W	g	WEST04MV
2312	250494	HCNI E	He, H3, SON	3535m	WHO	16-45.00S	110-00.19W	g	WEST04MV
0252	260494	HCNI B	CTD #96	CFC	WHO	16-45.04S	110-40.19W	g	WEST04MV
0557	260494	HCNI E	SON	3655m	WHO	16-45.10S	110-40.23W	g	WEST04MV
0940	260494	HCNI B	CTD #97	CFC, TCO2,	WHO	16-45.00S	111-20.05W	g	WEST04MV
1245	260494	HCNI E	SON	Talk, 3382m	WHO	16-44.99S	111-20.08W	g	WEST04MV
1632	260494	HCNI B	CTD #98	CFC	WHO	16-45.14S	112-00.11W	g	WEST04MV
1926	260494	HCNI E	SON	3216m	WHO	16-45.07S	112-00.20W	g	WEST04MV
2302	260494	HCNI B	CTD #99	CFC	WHO	16-44.93S	112-39.97W	g	WEST04MV
0139	270494	HCNI E	SON	3088m	WHO	16-44.66S	112-39.97W	g	WEST04MV
0518	270494	HCNI B	CTD #100	CFC, TCO2,	WHO	16-44.99S	113-20.06W	g	WEST04MV
0748	270494	HCNI E	SON	Talk, 2850m	WHO	16-44.98S	113-20.02W	g	WEST04MV
1139	270494	HCNI B	CTD #101	CFC	WHO	16-44.96S	114-00.08W	g	WEST04MV
1448	270494	HCNI E	He, H3, SON	2970m	WHO	16-44.94S	114-00.09W	g	WEST04MV
1939	270494	HCNI B	CTD #102	CFC, TCO2,	WHO	16-44.96S	114-40.03W	g	WEST04MV
2233	270494	HCNI E	SON	3014m	WHO	16-44.99S	114-40.02W	g	WEST04MV
0207	280494	HCNI B	CTD #103	CFC	WHO	16-45.19S	115-20.11W	g	WEST04MV
0458	280494	HCNI E	SON	3290m	WHO	16-45.35S	115-20.15W	g	WEST04MV
0842	280494	HCNI B	CTD #104	CFC, TCO2,	WHO	16-45.06S	115-59.97W	g	WEST04MV
1135	280494	HCNI E	SON	Talk, 3335m	WHO	16-45.03S	115-59.97W	g	WEST04MV
1521	280494	HCNI B	CTD #105	CFC	WHO	16-45.12S	116-40.24W	g	WEST04MV

1821	280494	HCNI E	SON	3265m	WHO	16-45.01S	116-39.92W	g	WEST04MV
2200	280494	HCNI B	CTD #106	CFC, TCO2,	WHO	16-44.98S	117-20.10W	g	WEST04MV
0051	290494	HCNI E	SON	3348m	WHO	16-44.99S	117-20.20W	g	WEST04MV
0429	290494	HCNI B	CTD #107	CFC	WHO	16-44.94S	118-00.01W	g	WEST04MV
0730	290494	HCNI E	He, H3, SON	3478m	WHO	16-44.94S	118-00.02W	g	WEST04MV
1109	290494	HCNI B	CTD #108	CFC, TCO2,	WHO	16-45.01S	118-40.09W	g	WEST04MV
1412	290494	HCNI E	SON	Talk, 3477m	WHO	16-45.12S	118-40.07W	g	WEST04MV
1758	290494	HCNI B	CTD #109	CFC	WHO	16-45.09S	119-19.98W	g	WEST04MV
2107	290494	HCNI E	SON	3482m	WHO	16-45.25S	119-20.11W	g	WEST04MV
0047	300494	HCNI B	CTD #110	CFC	WHO	16-44.98S	120-00.01W	g	WEST04MV
0348	300494	HCNI E	SON	3675m	WHO	16-44.92S	120-00.12W	g	WEST04MV
0733	300494	HCNI B	CTD #111		WHO	16-44.96S	120-40.04W	g	WEST04MV
1031	300494	HCNI X	lost rosette	3418m	WHO	16-44.98S	120-40.02W	g	WEST04MV
1648	300494	HCNI B	CTD #112	CFC, TCO2,	WHO	16-44.96S	121-20.02W	g	WEST04MV
1931	300494	HCNI E	SON	Talk, 3551m	WHO	16-44.97S	121-20.16W	g	WEST04MV
2307	300494	HCNI B	CTD #113	CFC, TCO2,	WHO	16-45.04S	122-00.13W	g	WEST04MV
0140	010594	HCNI E	He, H3, SON	3187m	WHO	16-45.11S	122-00.12W	g	WEST04MV
0517	010594	HCNI B	CTD #114	CFC, TCO2,	WHO	16-44.96S	122-40.04W	g	WEST04MV
0812	010594	HCNI E	SON	Talk, 3590m	WHO	16-44.89S	122-40.03W	g	WEST04MV
1155	010594	HCNI B	CTD #115	CFC	WHO	16-45.00S	123-20.10W	g	WEST04MV
1442	010594	HCNI E	SON	3570m	WHO	16-45.02S	123-20.02W	g	WEST04MV
1825	010594	HCNI B	CTD #116	CFC, TCO2,	WHO	16-44.96S	124-00.05W	g	WEST04MV
2118	010594	HCNI E	SON	3585m	WHO	16-44.99S	124-00.00W	g	WEST04MV
0059	020594	HCNI B	CTD #117	CFC, TCO2,	WHO	16-44.98S	124-40.07W	g	WEST04MV
0346	020594	HCNI E	He, H3, SON	Talk, 3705m	WHO	16-44.94S	124-40.15W	g	WEST04MV
0721	020594	HCNI B	CTD #118	CFC	WHO	16-45.00S	125-20.07W	g	WEST04MV
1008	020594	HCNI E	He, H3, SON	3725m	WHO	16-45.01S	125-20.04W	g	WEST04MV
1351	020594	HCNI B	CTD #119	CFC	WHO	16-44.88S	126-00.19W	g	WEST04MV
1643	020594	HCNI E	He, H3, SON	3642m	WHO	16-44.98S	126-00.01W	g	WEST04MV
2018	020594	HCNI B	CTD #120	CFC, TCO2,	WHO	16-44.93S	126-40.14W	g	WEST04MV
2315	020594	HCNI E	SON	3736m	WHO	16-44.95S	126-40.06W	g	WEST04MV
0304	030594	HCNI B	CTD #121	CFC	WHO	16-45.00S	127-20.06W	g	WEST04MV
0555	030594	HCNI E	SON	3925m	WHO	16-45.00S	127-20.14W	g	WEST04MV
0933	030594	HCNI B	CTD #122	CFC	WHO	16-44.99S	128-00.02W	g	WEST04MV
1217	030594	HCNI E	He, H3, SON	3766m	WHO	16-45.12S	127-59.95W	g	WEST04MV
1610	030594	HCNI B	CTD #123	CFC, TCO2,	WHO	16-44.99S	128-40.05W	g	WEST04MV
1905	030594	HCNI E	SON, TALK,	3870m	WHO	16-45.00S	128-40.06W	g	WEST04MV
2243	030594	HCNI B	CTD #124	CFC	WHO	16-44.98S	129-19.98W	g	WEST04MV
0130	040594	HCNI E	SON	3990m	WHO	16-44.98S	129-19.96W	g	WEST04MV
0508	040594	HCNI B	CTD #125	CFC, TCO2,	WHO	16-44.98S	130-00.03W	g	WEST04MV
0804	040594	HCNI E	He, H3, SON, TALK,	4030m	WHO	16-44.94S	130-00.07W	g	WEST04MV
1142	040594	HCNI B	CTD #126	CFC, TCO2,	WHO	16-44.99S	130-39.98W	g	WEST04MV
1444	040594	HCNI E	SON, TALK,	4015m	WHO	16-44.99S	130-39.96W	g	WEST04MV
1827	040594	HCNI B	CTD #127	CFC,	WHO	16-44.92S	131-20.05W	g	WEST04MV
2116	040594	HCNI E	SON	3880m	WHO	16-44.94S	131-20.06W	g	WEST04MV
0103	050594	HCNI B	CTD #128	CFC, TCO2,	WHO	16-45.03S	131-59.96W	g	WEST04MV
0358	050594	HCNI E	SON	4255m	WHO	16-44.99S	131-59.88W	g	WEST04MV
0748	050594	HCNI B	CTD #129	CFC,	WHO	16-44.98S	132-40.07W	g	WEST04MV
1037	050594	HCNI E	SON	3875m	WHO	16-45.10S	132-40.12W	g	WEST04MV
1431	050594	HCNI B	CTD #130	CFC,	WHO	16-45.06S	133-20.25W	g	WEST04MV
1748	050594	HCNI E	SON	4315m	WHO	16-45.00S	133-20.00W	g	WEST04MV
2134	050594	HCNI B	CTD #131	CFC, TCO2,	WHO	16-45.01S	134-00.06W	g	WEST04MV
0040	060594	HCNI E	He, H3, SON	4211m	WHO	16-44.85S	134-00.13W	g	WEST04MV
0414	060594	HCNI B	CTD #132	CFC, TCO2,	WHO	16-45.03S	134-39.99W	g	WEST04MV
0719	060594	HCNI E	SON	4371m	WHO	16-45.17S	134-39.95W	g	WEST04MV
1057	060594	HCNI B	CTD #133	CFC,	WHO	16-44.99S	135-20.09W	g	WEST04MV

1358	060594	HCNI E	SON	4195m	WHO	16-45.01S	135-20.07W	g	WEST04MV
1738	060594	HCNI B	CTD #134	CFC,	WHO	16-44.99S	135-59.99W	g	WEST04MV
2046	060594	HCNI E	SON	4430m	WHO	16-44.96S	136-00.02W	g	WEST04MV
0029	070594	HCNI B	CTD #135	CFC,	WHO	16-44.96S	136-40.21W	g	WEST04MV
0326	070594	HCNI E	SON	4222m	WHO	16-44.94S	136-40.21W	g	WEST04MV
0706	070594	HCNI B	CTD #136	CFC,	WHO	16-44.97S	137-20.04W	g	WEST04MV
0939	070594	HCNI E	SON	3620m	WHO	16-44.95S	137-20.03W	g	WEST04MV
1324	070594	HCNI B	CTD #137	CFC,	WHO	16-45.14S	138-00.08W	g	WEST04MV
1558	070594	HCNI E	SON	3480m	WHO	16-45.02S	138-00.02W	g	WEST04MV
1942	070594	HCNI B	CTD #138	CFC,	WHO	16-44.97S	138-40.03W	g	WEST04MV
2209	070594	HCNI E	SON	2915m	WHO	16-44.95S	138-40.04W	g	WEST04MV
0141	080594	HCNI B	CTD #139	CFC,	WHO	16-44.97S	139-20.03W	g	WEST04MV
0330	080594	HCNI E	SON	2170m	WHO	16-44.88S	139-20.13W	g	WEST04MV
0949	080594	HCNI B	CTD #140	CFC,	WHO	16-44.96S	139-59.98W	g	WEST04MV
1154	080594	HCNI E	SON	2535m	WHO	16-44.95S	139-59.99W	g	WEST04MV
1536	080594	HCNI B	CTD #141	CFC, TCO2,	WHO	16-45.00S	140-39.85W	g	WEST04MV
1822	080594	HCNI E	SON, TALK,	3215m	WHO	16-45.01S	140-39.98W	g	WEST04MV
2206	080594	HCNI B	CTD #142	CFC, TCO2,	WHO	16-45.00S	141-20.03W	g	WEST04MV
0045	090594	HCNI E	He, H3, SON	3135m	WHO	16-44.97S	141-20.15W	g	WEST04MV
0455	090594	HCNI B	CTD #143	CFC	WHO	16-44.88S	142-00.03W	g	WEST04MV
0645	090594	HCNI E	SON	1922m	WHO	16-45.01S	142-00.08W	g	WEST04MV
1112	090594	HCNI B	CTD #144	CFC, TCO2,	WHO	16-44.98S	142-40.01W	g	WEST04MV
1259	090594	HCNI E	SON, TALK,	1885m	WHO	16-44.96S	142-39.97W	g	WEST04MV
1500	090594	HCNI B	CTD #145		WHO	17-00.06S	142-49.96W	g	WEST04MV
1629	090594	HCNI E	SON	1420m	WHO	17-00.01S	142-50.01W	g	WEST04MV
1822	090594	HCNI B	CTD #146	CFC	WHO	17-14.99S	142-59.98W	g	WEST04MV
1957	090594	HCNI E	SON	1500m	WHO	17-14.89S	142-59.93W	g	WEST04MV
2153	090594	HCNI B	CTD #147		WHO	17-29.94S	143-10.04W	g	WEST04MV
0028	100594	HCNI E	SON	3287m	WHO	17-29.94S	143-10.04W	g	WEST04MV
0410	100594	HCNI B	CTD #148	CFC, TCO2,	WHO	17-30.01S	143-50.04W	g	WEST04MV
0652	100594	HCNI E	SON	3413m	WHO	17-29.88S	143-50.20W	g	WEST04MV
1033	100594	HCNI B	CTD #149	CFC	WHO	17-29.98S	144-30.07W	g	WEST04MV
1333	100594	HCNI E	SON	3960m	WHO	17-29.98S	144-30.07W	g	WEST04MV
1717	100594	HCNI B	CTD #150	CFC, TCO2,	WHO	17-30.17S	145-10.17W	g	WEST04MV
1948	100594	HCNI E	SON, TALK,	3108m	WHO	17-30.25S	145-10.21W	g	WEST04MV
2154	100594	HCNI B	CTD #151	CFC	WHO	17-29.99S	145-30.08W	g	WEST04MV
2330	100594	HCNI E	He, H3, SON	1575m	WHO	17-30.00S	145-30.10W	g	WEST04MV
0135	110594	HCNI B	CTD #152	CFC, TCO2,	WHO	17-30.03S	145-50.05W	g	WEST04MV
0430	110594	HCNI E	SON	4104m	WHO	17-30.18S	145-50.15W	g	WEST04MV
0812	110594	HCNI B	CTD #153	CFC	WHO	17-30.01S	146-30.00W	g	WEST04MV
1101	110594	HCNI E	SON	4020m	WHO	17-29.93S	146-29.96W	g	WEST04MV
1448	110594	HCNI B	CTD #154	CFC	WHO	17-30.02S	147-10.21W	g	WEST04MV
1752	110594	HCNI E	He, H3, SON	3915m	WHO	17-30.27S	147-09.95W	g	WEST04MV
2145	110594	HCNI B	CTD #155	CFC, TCO2,	WHO	17-29.97S	147-50.02W	g	WEST04MV
0043	120594	HCNI E	SON	3814m	WHO	17-29.97S	147-50.23W	g	WEST04MV
0805	120594	HCNI B	CTD #156	CFC	WHO	17-29.93S	149-20.16W	g	WEST04MV
0913	120594	HCNI E	SON	918m	WHO	17-29.85S	149-20.16W	g	WEST04MV
1021	120594	HCNI B	CTD #157	, TCO2,	WHO	17-30.08S	149-10.06W	g	WEST04MV
1240	120594	HCNI E	SON	2620m	WHO	17-29.98S	149-10.05W	g	WEST04MV
1351	120594	HCNI B	CTD #158	CFC,	WHO	17-30.07S	148-59.84W	g	WEST04MV
1611	120594	HCNI E	He, H3, SON	3075m	WHO	17-30.06S	148-59.90W	g	WEST04MV
1801	120594	HCNI B	CTD #159		WHO	17-30.21S	148-49.98W	g	WEST04MV
2022	120594	HCNI E	SON	2850m	WHO	17-30.11S	148-50.00W	g	WEST04MV
2219	120594	HCNI B	CTD #160	CFC, TCO2,	WHO	17-30.06S	148-29.83W	g	WEST04MV
0118	130594	HCNI E	SON TALK,	3817m	WHO	17-30.01S	148-29.89W	g	WEST04MV
0452	130594	HCNI B	CTD #161	CFC	WHO	17-29.96S	147-49.98W	g	WEST04MV

0752 130594 HCNI E SON 3840m WHO 17-29.80S 147-49.91W g WEST04MV

\*\*\* Temperature, Depth, Salinity \*\*\*

2207	280394	TDCT B CTD #1	with 36 btl	WHO	16-53.19S	074-08.09W	g	WEST04MV
0158	290394	TDCT E rosette	5660m	WHO	16-52.02S	074-08.32W	g	WEST04MV
0442	290394	TDCT B CTD #2	with 18 btl	WHO	16-51.71S	074-08.64W	g	WEST04MV
0912	290394	TDCT E rosette	5693m	WHO	16-51.21S	074-09.39W	g	WEST04MV
1112	290394	TDCT B CTD #3	with 36 btl	WHO	16-50.50S	074-10.60W	g	WEST04MV
1529	290394	TDCT E rosette	5570m	WHO	16-49.89S	074-10.88W	g	WEST04MV
0557	300394	TDCT B CTD #4	with 05 btl	WHO	14-30.04S	076-09.82W	g	WEST04MV
0621	300394	TDCT E rosette	114m	WHO	14-30.03S	076-10.00W	g	WEST04MV
0817	300394	TDCT B CTD #5	with 06 btl	WHO	14-37.44S	076-14.91W	g	WEST04MV
0848	300394	TDCT E rosette	195m	WHO	14-37.29S	076-14.92W	g	WEST04MV
1015	300394	TDCT B CTD #6	with 22 btl	WHO	14-44.97S	076-19.94W	g	WEST04MV
1158	300394	TDCT E rosette	1730m	WHO	14-44.84S	076-19.06W	g	WEST04MV
1337	300394	TDCT B CTD #7	with 33 btl	WHO	14-52.53S	076-24.87W	g	WEST04MV
1619	300394	TDCT E rosette	3232m	WHO	14-52.16S	076-24.06W	g	WEST04MV
1744	300394	TDCT B CTD #8	with 36 btl	WHO	14-59.97S	076-30.09W	g	WEST04MV
2114	300394	TDCT E rosette	4312m	WHO	14-58.88S	076-31.10W	g	WEST04MV
2330	300394	TDCT B CTD #9	with 36 btl	WHO	15-07.24S	076-34.81W	g	WEST04MV
0301	310394	TDCT E rosette	4121m	WHO	15-07.80S	076-34.41W	g	WEST04MV
0502	310394	TDCT B CTD #10	with 36 btl	WHO	15-14.80S	076-40.07W	g	WEST04MV
0759	310394	TDCT E rosette	3600m	WHO	15-13.95S	076-40.71W	g	WEST04MV
1004	310394	TDCT B CTD #11	with 36 btl	WHO	15-22.50S	076-45.05W	g	WEST04MV
1246	310394	TDCT E rosette	3040m	WHO	15-22.38S	076-45.48W	g	WEST04MV
1417	310394	TDCT B CTD #12	with 36 btl	WHO	15-30.01S	076-50.00W	g	WEST04MV
1710	310394	TDCT E rosette	2910m	WHO	15-29.99S	076-50.19W	g	WEST04MV
1922	310394	TDCT B CTD #13	with 36 btl	WHO	15-36.96S	076-55.10W	g	WEST04MV
2206	310394	TDCT E rosette	2855m	WHO	15-36.27S	076-55.52W	g	WEST04MV
0308	010494	TDCT B CTD #13-2	with 36 btl	WHO	15-33.73S	076-06.95W	g	WEST04MV
0607	010494	TDCT E rosette	4723m	WHO	15-34.04S	076-06.11W	g	WEST04MV
1056	010494	TDCT B CTD #14	with 13 btl	WHO	15-29.99S	075-09.98W	g	WEST04MV
1157	010494	TDCT E rosette	0740m	WHO	15-30.00S	075-10.36W	g	WEST04MV
1307	010494	TDCT B CTD #15	with 18 btl	WHO	15-37.58S	075-15.12W	g	WEST04MV
1432	010494	TDCT E rosette	1153m	WHO	15-38.03S	075-14.79W	g	WEST04MV
1548	010494	TDCT B CTD #16	with 28 btl	WHO	15-44.96S	075-19.88W	g	WEST04MV
1801	010494	TDCT E rosette	2195m	WHO	15-45.23S	075-19.10W	g	WEST04MV
1952	010494	TDCT B CTD #17	with 36 btl	WHO	15-52.66S	075-24.73W	g	WEST04MV
2312	010494	TDCT E rosette	3745m	WHO	15-53.10S	075-25.04W	g	WEST04MV
0127	020494	TDCT B CTD #18	with 36 btl	WHO	16-00.01S	075-30.01W	g	WEST04MV
0544	020494	TDCT E rosette	5695m	WHO	16-00.87S	075-29.42W	g	WEST04MV
0732	020494	TDCT B CTD #19	with 36 btl	WHO	16-07.60S	075-35.39W	g	WEST04MV
1121	020494	TDCT E rosette	5130m	WHO	16-07.53S	075-35.04W	g	WEST04MV
1415	020494	TDCT B CTD #20	with 36 btl	WHO	16-07.56S	075-35.06W	g	WEST04MV
1819	020494	TDCT E rosette	5130m	WHO	16-07.65S	075-34.47W	g	WEST04MV
2003	020494	TDCT B CTD #21	with 36 btl	WHO	16-14.92S	075-40.04W	g	WEST04MV
2333	020494	TDCT E rosette	4270m	WHO	16-13.82S	075-40.22W	g	WEST04MV
0121	030494	TDCT B CTD #22	with 36 btl	WHO	16-22.37S	075-45.11W	g	WEST04MV
0446	030494	TDCT E rosette	4185m	WHO	16-22.95S	075-45.37W	g	WEST04MV
0640	030494	TDCT B CTD #23	with 36 btl	WHO	16-29.62S	075-50.61W	g	WEST04MV
0959	030494	TDCT E rosette	4325m	WHO	16-28.84S	075-51.93W	g	WEST04MV
1145	030494	TDCT B CTD #24	with 36 btl	WHO	16-37.44S	075-55.09W	g	WEST04MV
1529	030494	TDCT E rosette	4155m	WHO	16-37.93S	075-55.71W	g	WEST04MV
1703	030494	TDCT B CTD #25	with 36 btl	WHO	16-44.77S	076-00.23W	g	WEST04MV

2025	030494	TDCT E rosette	4075m	WHO	16-44.12S	076-01.06W	g	WEST04MV
0011	040494	TDCT B CTD #26	with 36 btl	WHO	16-44.98S	076-40.15W	g	WEST04MV
0308	040494	TDCT E rosette	3330m	WHO	16-44.74S	076-39.87W	g	WEST04MV
0656	040494	TDCT B CTD #27	with 36 btl	WHO	16-44.80S	077-20.18W	g	WEST04MV
0909	040494	TDCT E rosette	2800m	WHO	16-45.14S	077-20.44W	g	WEST04MV
1226	040494	TDCT B CTD #28	with 36 btl	WHO	16-44.77S	078-00.04W	g	WEST04MV
1503	040494	TDCT E rosette	2723m	WHO	16-44.92S	077-59.94W	g	WEST04MV
1820	040494	TDCT B CTD #29	with 36 btl	WHO	16-45.02S	078-40.13W	g	WEST04MV
2132	040494	TDCT E rosette	3728m	WHO	16-45.29S	078-40.37W	g	WEST04MV
0056	050494	TDCT B CTD #30	with 36 btl	WHO	16-45.10S	079-20.24W	g	WEST04MV
0429	050494	TDCT E rosette	4367m	WHO	16-44.64S	079-20.77W	g	WEST04MV
0756	050494	TDCT B CTD #31	with 36 btl	WHO	16-44.98S	080-00.05W	g	WEST04MV
1112	050494	TDCT E rosette	4360m	WHO	16-44.78S	079-59.38W	g	WEST04MV
1452	050494	TDCT B CTD #32	with 36 btl	WHO	16-44.87S	080-40.11W	g	WEST04MV
1839	050494	TDCT E rosette	4635m	WHO	16-44.38S	080-40.32W	g	WEST04MV
2215	050494	TDCT B CTD #33	with 36 btl	WHO	16-44.93S	081-20.03W	g	WEST04MV
0138	060494	TDCT E rosette	4354m	WHO	16-44.91S	081-20.04W	g	WEST04MV
0512	060494	TDCT B CTD #34	with 36 btl	WHO	16-45.05S	082-00.08W	g	WEST04MV
0512	060494	TDCT B rosette		WHO	16-45.05S	082-00.08W	g	WEST04MV
0724	060494	TDCT B CTD #34-2	with 36 btl	WHO	16-44.65S	082-00.19W	g	WEST04MV
0854	060494	TDCT E rosette	4260m	WHO	16-44.52S	082-00.26W	g	WEST04MV
1353	060494	TDCT B CTD #35	with 36 btl	WHO	16-44.94S	082-40.10W	g	WEST04MV
1731	060494	TDCT E rosette	4520m	WHO	16-45.00S	082-40.21W	g	WEST04MV
2050	060494	TDCT B CTD #36	with 36 btl	WHO	16-45.06S	083-20.03W	g	WEST04MV
0018	070494	TDCT E rosette	4613m	WHO	16-45.06S	083-19.88W	g	WEST04MV
0344	070494	TDCT B CTD #37	with 36 btl	WHO	16-44.94S	084-00.09W	g	WEST04MV
0650	070494	TDCT E rosette	4549m	WHO	16-44.93S	084-00.09W	g	WEST04MV
1023	070494	TDCT B CTD #38	with 36 btl	WHO	16-45.14S	084-40.11W	g	WEST04MV
1402	070494	TDCT E rosette	4510m	WHO	16-45.11S	084-40.16W	g	WEST04MV
1727	070494	TDCT B CTD #39	with 36 btl	WHO	16-45.01S	085-20.15W	g	WEST04MV
2110	070494	TDCT E rosette	4502m	WHO	16-44.93S	085-20.30W	g	WEST04MV
1815	080494	TDCT B CTD #40	with 36 btl	WHO	16-44.90S	081-00.14W	g	WEST04MV
2330	080494	TDCT E rosette	4492m	WHO	16-44.35S	081-00.34W	g	WEST04MV
0311	090494	TDCT B CTD #41	with 36 btl	WHO	16-45.06S	081-40.12W	g	WEST04MV
0702	090494	TDCT E rosette	4560m	WHO	16-44.96S	081-40.19W	g	WEST04MV
1059	090494	TDCT B CTD #42	with 36 btl	WHO	16-45.04S	082-20.12W	g	WEST04MV
1509	090494	TDCT E rosette	4470m	WHO	16-45.08S	082-20.20W	g	WEST04MV
1850	090494	TDCT B CTD #43	with 36 btl	WHO	16-45.12S	083-00.14W	g	WEST04MV
2304	090494	TDCT E rosette	4547m	WHO	16-45.33S	083-00.05W	g	WEST04MV
0328	100494	TDCT B CTD #44	with 36 btl	WHO	16-44.98S	083-39.99W	g	WEST04MV
0722	100494	TDCT E rosette	4600m	WHO	16-44.92S	083-40.00W	g	WEST04MV
1130	100494	TDCT B CTD #45	with 36 btl	WHO	16-45.18S	084-20.18W	g	WEST04MV
1555	100494	TDCT E rosette	4770m	WHO	16-45.12S	084-20.50W	g	WEST04MV
1943	100494	TDCT B CTD #46	with 36 btl	WHO	16-45.02S	085-00.18W	g	WEST04MV
2341	100494	TDCT E rosette	4295m	WHO	16-45.04S	085-00.48W	g	WEST04MV
0328	110494	TDCT B CTD #47	with 36 btl	WHO	16-45.02S	085-40.07W	g	WEST04MV
0717	110494	TDCT E rosette	4446m	WHO	16-44.94S	085-40.06W	g	WEST04MV
1117	110494	TDCT B CTD #48	with 36 btl	WHO	16-45.11S	086-20.07W	g	WEST04MV
1516	110494	TDCT E rosette	4405m	WHO	16-45.12S	086-20.09W	g	WEST04MV
1859	110494	TDCT B CTD #49	with 36 btl	WHO	16-44.96S	086-59.99W	g	WEST04MV
2251	110494	TDCT E rosette	4380m	WHO	16-44.54S	087-00.12W	g	WEST04MV
0234	120494	TDCT B CTD #50	with 36 btl	WHO	16-44.98S	087-40.15W	g	WEST04MV
0604	120494	TDCT E rosette	4309m	WHO	16-44.95S	087-40.41W	g	WEST04MV
0949	120494	TDCT B CTD #51	with 36 btl	WHO	16-45.02S	088-20.01W	g	WEST04MV
1406	120494	TDCT E rosette	4205m	WHO	16-44.85S	088-20.26W	g	WEST04MV
1746	120494	TDCT B CTD #52	with 36 btl	WHO	16-45.08S	089-00.12W	g	WEST04MV

2128	120494	TDCT E rosette	4260m	WHO	16-45.16S	089-00.16W	g	WEST04MV
0119	130494	TDCT B CTD #53	with 36 btl	WHO	16-45.23S	089-40.07W	g	WEST04MV
0459	130494	TDCT E rosette	4417m	WHO	16-45.29S	089-39.99W	g	WEST04MV
1316	130494	TDCT B CTD #54	with 36 btl	WHO	16-45.06S	088-00.00W	g	WEST04MV
1656	130494	TDCT E rosette	4445m	WHO	16-45.09S	088-00.13W	g	WEST04MV
2036	130494	TDCT B CTD #55	with 36 btl	WHO	16-45.07S	088-40.14W	g	WEST04MV
0003	140494	TDCT E rosette	4230m	WHO	16-45.02S	088-40.14W	g	WEST04MV
0351	140494	TDCT B CTD #56	with 36 btl	WHO	16-44.97S	089-20.16W	g	WEST04MV
0716	140494	TDCT E rosette	4475m	WHO	16-45.01S	089-20.13W	g	WEST04MV
1112	140494	TDCT B CTD #57	with 36 btl	WHO	16-45.08S	090-00.08W	g	WEST04MV
1445	140494	TDCT E rosette	4235m	WHO	16-45.10S	090-00.07W	g	WEST04MV
1835	140494	TDCT B CTD #58	with 36 btl	WHO	16-45.01S	090-40.05W	g	WEST04MV
2202	140494	TDCT E rosette	4345m	WHO	16-44.71S	090-40.12W	g	WEST04MV
0150	150494	TDCT B CTD #59	with 36 btl	WHO	16-45.04S	091-20.02W	g	WEST04MV
0513	150494	TDCT E rosette	4305m	WHO	16-44.95S	091-20.09W	g	WEST04MV
0859	150494	TDCT B CTD #60	with 36 btl	WHO	16-45.01S	092-00.11W	g	WEST04MV
1217	150494	TDCT E rosette	4300m	WHO	16-44.94S	092-00.11W	g	WEST04MV
1704	150494	TDCT B CTD #61	with 36 btl	WHO	16-45.01S	092-40.22W	g	WEST04MV
2035	150494	TDCT E rosette	4140m	WHO	16-44.39S	092-40.43W	g	WEST04MV
0028	160494	TDCT B CTD #62	with 36 btl	WHO	16-45.01S	093-20.11W	g	WEST04MV
0344	160494	TDCT E rosette	4170m	WHO	16-44.89S	093-19.45W	g	WEST04MV
0735	160494	TDCT B CTD #63	with 36 btl	WHO	16-45.12S	093-59.98W	g	WEST04MV
1040	160494	TDCT E rosette	4297m	WHO	16-44.00S	093-58.49W	g	WEST04MV
1440	160494	TDCT B CTD #64	with 36 btl	WHO	16-44.96S	094-40.16W	g	WEST04MV
1804	160494	TDCT E rosette	4005m	WHO	16-43.49S	094-39.33W	g	WEST04MV
2145	160494	TDCT B CTD #65	with 36 btl	WHO	16-44.90S	095-20.02W	g	WEST04MV
0101	170494	TDCT E rosette	4023m	WHO	16-43.19S	095-19.92W	g	WEST04MV
0440	170494	TDCT B CTD #66	with 36 btl	WHO	16-45.28S	096-00.23W	g	WEST04MV
0744	170494	TDCT E rosette	4080m	WHO	16-44.46S	095-59.35W	g	WEST04MV
1135	170494	TDCT B CTD #67	with 36 btl	WHO	16-44.97S	096-39.77W	g	WEST04MV
1458	170494	TDCT E rosette	3795m	WHO	16-44.83S	096-38.84W	g	WEST04MV
1848	170494	TDCT B CTD #68	with 36 btl	WHO	16-44.99S	097-19.94W	g	WEST04MV
2206	170494	TDCT E rosette	4180m	WHO	16-43.85S	097-19.17W	g	WEST04MV
0148	180494	TDCT B CTD #69	with 36 btl	WHO	16-44.88S	097-59.92W	g	WEST04MV
0505	180494	TDCT E rosette	4180m	WHO	16-43.95S	097-59.85W	g	WEST04MV
0849	180494	TDCT B CTD #70	with 36 btl	WHO	16-45.01S	098-39.99W	g	WEST04MV
1205	180494	TDCT E rosette	3975m	WHO	16-43.17S	098-39.63W	g	WEST04MV
1553	180494	TDCT B CTD #71	with 36 btl	WHO	16-45.03S	099-20.06W	g	WEST04MV
1908	180494	TDCT E rosette	3650m	WHO	16-44.99S	099-20.12W	g	WEST04MV
2257	180494	TDCT B CTD #72	with 36 btl	WHO	16-45.06S	100-00.03W	g	WEST04MV
0157	190494	TDCT E rosette	3762m	WHO	16-45.09S	100-00.05W	g	WEST04MV
0545	190494	TDCT B CTD #73	with 36 btl	WHO	16-44.86S	100-40.03W	g	WEST04MV
0851	190494	TDCT E rosette	3903m	WHO	16-44.72S	100-40.08W	g	WEST04MV
1243	190494	TDCT B CTD #74	with 36 btl	WHO	16-45.05S	101-20.07W	g	WEST04MV
1554	190494	TDCT E rosette	3600m	WHO	16-45.05S	101-20.08W	g	WEST04MV
1931	190494	TDCT B CTD #75	with 36 btl	WHO	16-44.97S	101-59.92W	g	WEST04MV
2247	190494	TDCT E rosette	3798m	WHO	16-45.19S	102-00.48W	g	WEST04MV
0244	200494	TDCT B CTD #76	with 36 btl	WHO	16-45.15S	102-39.65W	g	WEST04MV
0548	200494	TDCT E rosette	3639m	WHO	16-45.17S	102-39.73W	g	WEST04MV
0937	200494	TDCT B CTD #77	with 36 btl	WHO	16-44.88S	103-19.99W	g	WEST04MV
1317	200494	TDCT E rosette	3632m	WHO	16-45.05S	103-20.02W	g	WEST04MV
1704	200494	TDCT B CTD #78	with 36 btl	WHO	16-45.01S	104-00.02W	g	WEST04MV
2043	200494	TDCT E rosette	3795m	WHO	16-44.93S	104-00.22W	g	WEST04MV
0117	210494	TDCT B CTD #79	with 16 btl	WHO	16-44.90S	104-40.02W	g	WEST04MV
0230	210494	TDCT E rosette	1082m	WHO	16-44.57S	104-40.34W	g	WEST04MV
0611	210494	TDCT B CTD #80	with 36 btl	WHO	16-45.01S	105-20.04W	g	WEST04MV

0844	210494	TDCT E rosette	2923m	WHO	16-44.93S	105-20.09W	g	WEST04MV	
1432	210494	TDCT B CTD #81	with 36	bt1	WHO	16-55.04S	104-19.98W	g	WEST04MV
1840	210494	TDCT E rosette	3815m	WHO	16-54.94S	104-20.13W	g	WEST04MV	
2040	210494	TDCT B CTD #82	with 36	bt1	WHO	16-55.00S	104-40.02W	g	WEST04MV
2335	210494	TDCT E rosette	3415m	WHO	16-54.95S	104-40.09W	g	WEST04MV	
0131	220494	TDCT B CTD #83	with 36	bt1	WHO	16-55.18S	104-59.98W	g	WEST04MV
0420	220494	TDCT E rosette	3120m	WHO	16-55.27S	105-00.03W	g	WEST04MV	
0615	220494	TDCT B CTD #84	with 36	bt1	WHO	16-55.03S	105-20.29W	g	WEST04MV
0917	220494	TDCT E rosette	3643m	WHO	16-55.45S	105-20.53W	g	WEST04MV	
1105	220494	TDCT B CTD #980	with 36	bt1	WHO	16-44.93S	105-20.17W	g	WEST04MV
1348	220494	TDCT E rosette	2900m	WHO	16-45.14S	105-21.36W	g	WEST04MV	
1729	220494	TDCT B CTD #985	with 02	bt1	WHO	16-44.90S	106-00.02W	g	WEST04MV
2016	220494	TDCT E rosette	3789m	WHO	16-45.20S	105-59.74W	g	WEST04MV	
2147	220494	TDCT B CTD #85	with 36	bt1	WHO	16-45.00S	106-00.15W	g	WEST04MV
0051	230494	TDCT E rosette	3742m	WHO	16-45.15S	105-59.54W	g	WEST04MV	
0432	230494	TDCT B CTD #86	with 36	bt1	WHO	16-45.00S	106-40.11W	g	WEST04MV
0710	230494	TDCT E rosette	2890m	WHO	16-44.97S	106-40.23W	g	WEST04MV	
1054	230494	TDCT B CTD #87	with 36	bt1	WHO	16-44.93S	107-20.08W	g	WEST04MV
1334	230494	TDCT E rosette	3072m	WHO	16-44.96S	107-20.10W	g	WEST04MV	
1713	230494	TDCT B CTD #88	with 36	bt1	WHO	16-45.08S	108-00.02W	g	WEST04MV
2027	230494	TDCT E rosette	3668m	WHO	16-45.21S	108-00.11W	g	WEST04MV	
0001	240494	TDCT B CTD #89	with 36	bt1	WHO	16-45.10S	108-40.12W	g	WEST04MV
0258	240494	TDCT E rosette	3583m	WHO	16-45.16S	108-40.11W	g	WEST04MV	
0648	240494	TDCT B CTD #90	with 36	bt1	WHO	16-45.02S	109-20.07W	g	WEST04MV
0945	240494	TDCT E rosette	3570m	WHO	16-45.15S	109-20.19W	g	WEST04MV	
1754	240494	TDCT B CTD #991	with 36	bt1	WHO	16-45.00S	107-40.10W	g	WEST04MV
1832	240494	TDCT E rosette	CFC	WHO	16-45.02S	107-40.10W	g	WEST04MV	
1903	240494	TDCT B CTD #91	with 36	bt1	WHO	16-45.02S	107-40.11W	g	WEST04MV
2335	240494	TDCT E rosette	3405m	WHO	16-44.94S	107-40.11W	g	WEST04MV	
0351	250494	TDCT B CTD #92	with 24	bt1	WHO	16-44.97S	108-19.99W	g	WEST04MV
0641	250494	TDCT E rosette	3750m	WHO	16-44.80S	108-19.85W	g	WEST04MV	
1037	250494	TDCT B CTD #93	with 24	bt1	WHO	16-45.06S	109-00.10W	g	WEST04MV
1333	250494	TDCT E rosette	3583m	WHO	16-45.07S	109-00.13W	g	WEST04MV	
1716	250494	TDCT B CTD #94	with 24	bt1	WHO	16-44.92S	109-40.03W	g	WEST04MV
1738	250494	TDCT X rosette		WHO	16-44.95S	109-40.02W	g	WEST04MV	
2003	250494	TDCT B CTD #95	with 36	bt1	WHO	16-44.89S	109-59.97W	g	WEST04MV
2312	250494	TDCT E rosette	3535m	WHO	16-45.00S	110-00.19W	g	WEST04MV	
0252	260494	TDCT B CTD #96	with 36	bt1	WHO	16-45.04S	110-40.19W	g	WEST04MV
0557	260494	TDCT E rosette	3655m	WHO	16-45.10S	110-40.23W	g	WEST04MV	
0940	260494	TDCT B CTD #97	with 36	bt1	WHO	16-45.00S	111-20.05W	g	WEST04MV
1245	260494	TDCT E rosette	3382m	WHO	16-44.99S	111-20.08W	g	WEST04MV	
1632	260494	TDCT B CTD #98	with 36	bt1	WHO	16-45.14S	112-00.11W	g	WEST04MV
1926	260494	TDCT E rosette	3216m	WHO	16-45.07S	112-00.20W	g	WEST04MV	
2302	260494	TDCT B CTD #99	with 36	bt1	WHO	16-44.93S	112-39.97W	g	WEST04MV
0139	270494	TDCT E rosette	3088m	WHO	16-44.66S	112-39.97W	g	WEST04MV	
0518	270494	TDCT B CTD #100	with 36	bt1	WHO	16-44.99S	113-20.06W	g	WEST04MV
0748	270494	TDCT E rosette	2850m	WHO	16-44.98S	113-20.02W	g	WEST04MV	
1139	270494	TDCT B CTD #101	with 36	bt1	WHO	16-44.96S	114-00.08W	g	WEST04MV
1448	270494	TDCT E rosette	2970m	WHO	16-44.94S	114-00.09W	g	WEST04MV	
1939	270494	TDCT B CTD #102	with 36	bt1	WHO	16-44.96S	114-40.03W	g	WEST04MV
2233	270494	TDCT E rosette	3014m	WHO	16-44.99S	114-40.02W	g	WEST04MV	
0207	280494	TDCT B CTD #103	with 36	bt1	WHO	16-45.19S	115-20.11W	g	WEST04MV
0458	280494	TDCT E rosette	3290m	WHO	16-45.35S	115-20.15W	g	WEST04MV	
0842	280494	TDCT B CTD #104	with 36	bt1	WHO	16-45.06S	115-59.97W	g	WEST04MV
1135	280494	TDCT E rosette	3335m	WHO	16-45.03S	115-59.97W	g	WEST04MV	
1521	280494	TDCT B CTD #105	with 36	bt1	WHO	16-45.12S	116-40.24W	g	WEST04MV



1821	280494	TDCT E rosette	3265m	WHO	16-45.01S	116-39.92W	g	WEST04MV
2200	280494	TDCT B CTD #106 with	36 btl	WHO	16-44.98S	117-20.10W	g	WEST04MV
0051	290494	TDCT E rosette	3348m	WHO	16-44.99S	117-20.20W	g	WEST04MV
0429	290494	TDCT B CTD #107 with	36 btl	WHO	16-44.94S	118-00.01W	g	WEST04MV
0730	290494	TDCT E rosette	3478m	WHO	16-44.94S	118-00.02W	g	WEST04MV
1109	290494	TDCT B CTD #108 with	36 btl	WHO	16-45.01S	118-40.09W	g	WEST04MV
1412	290494	TDCT E rosette	3477m	WHO	16-45.12S	118-40.07W	g	WEST04MV
1758	290494	TDCT B CTD #109 with	36 btl	WHO	16-45.09S	119-19.98W	g	WEST04MV
2107	290494	TDCT E rosette	3482m	WHO	16-45.25S	119-20.11W	g	WEST04MV
0047	300494	TDCT B CTD #110 with	36 btl	WHO	16-44.98S	120-00.01W	g	WEST04MV
0348	300494	TDCT E rosette	3675m	WHO	16-44.92S	120-00.12W	g	WEST04MV
0733	300494	TDCT B CTD #111 with	36 btl	WHO	16-44.96S	120-40.04W	g	WEST04MV
1031	300494	TDCT E rosette	3418m	WHO	16-44.98S	120-40.02W	g	WEST04MV
1648	300494	TDCT B CTD #112 with	24 btl	WHO	16-44.96S	121-20.02W	g	WEST04MV
1931	300494	TDCT E rosette	3551m	WHO	16-44.97S	121-20.16W	g	WEST04MV
2307	300494	TDCT B CTD #113 with	24 btl	WHO	16-45.04S	122-00.13W	g	WEST04MV
0140	010594	TDCT E rosette	3187m	WHO	16-45.11S	122-00.12W	g	WEST04MV
0517	010594	TDCT B CTD #114 with	24 btl	WHO	16-44.96S	122-40.04W	g	WEST04MV
0812	010594	TDCT E rosette	3590m	WHO	16-44.89S	122-40.03W	g	WEST04MV
1155	010594	TDCT B CTD #115 with	24 btl	WHO	16-45.00S	123-20.10W	g	WEST04MV
1442	010594	TDCT E rosette	3570m	WHO	16-45.02S	123-20.02W	g	WEST04MV
1825	010594	TDCT B CTD #116 with	24 btl	WHO	16-44.96S	124-00.05W	g	WEST04MV
2118	010594	TDCT E rosette	3585m	WHO	16-44.99S	124-00.00W	g	WEST04MV
0059	020594	TDCT B CTD #117 with	24 btl	WHO	16-44.98S	124-40.07W	g	WEST04MV
0346	020594	TDCT E rosette	3705m	WHO	16-44.94S	124-40.15W	g	WEST04MV
0721	020594	TDCT B CTD #118 with	24 btl	WHO	16-45.00S	125-20.07W	g	WEST04MV
1008	020594	TDCT E rosette	3725m	WHO	16-45.01S	125-20.04W	g	WEST04MV
1351	020594	TDCT B CTD #119 with	24 btl	WHO	16-44.88S	126-00.19W	g	WEST04MV
1643	020594	TDCT E rosette	3642m	WHO	16-44.98S	126-00.01W	g	WEST04MV
2018	020594	TDCT B CTD #120 with	24 btl	WHO	16-44.93S	126-40.14W	g	WEST04MV
2315	020594	TDCT E rosette	3736m	WHO	16-44.95S	126-40.06W	g	WEST04MV
0304	030594	TDCT B CTD #121 with	24 btl	WHO	16-45.00S	127-20.06W	g	WEST04MV
0555	030594	TDCT E rosette	3925m	WHO	16-45.00S	127-20.14W	g	WEST04MV
0933	030594	TDCT B CTD #122 with	24 btl	WHO	16-44.99S	128-00.02W	g	WEST04MV
1217	030594	TDCT E rosette	3766m	WHO	16-45.12S	127-59.95W	g	WEST04MV
1610	030594	TDCT B CTD #123 with	24 btl	WHO	16-44.99S	128-40.05W	g	WEST04MV
1905	030594	TDCT E rosette	3870m	WHO	16-45.00S	128-40.06W	g	WEST04MV
2243	030594	TDCT B CTD #124 with	24 btl	WHO	16-44.98S	129-19.98W	g	WEST04MV
0130	040594	TDCT E rosette	3990m	WHO	16-44.98S	129-19.96W	g	WEST04MV
0508	040594	TDCT B CTD #125 with	24 btl	WHO	16-44.98S	130-00.03W	g	WEST04MV
0804	040594	TDCT E rosette	4030m	WHO	16-44.94S	130-00.07W	g	WEST04MV
1142	040594	TDCT B CTD #126 with	24 btl	WHO	16-44.99S	130-39.98W	g	WEST04MV
1444	040594	TDCT E rosette	4015m	WHO	16-44.99S	130-39.96W	g	WEST04MV
1827	040594	TDCT B CTD #127 with	24 btl	WHO	16-44.92S	131-20.05W	g	WEST04MV
2116	040594	TDCT E rosette	3880m	WHO	16-44.94S	131-20.06W	g	WEST04MV
0103	050594	TDCT B CTD #128 with	24 btl	WHO	16-45.03S	131-59.96W	g	WEST04MV
0358	050594	TDCT E rosette	4255m	WHO	16-44.99S	131-59.88W	g	WEST04MV
0748	050594	TDCT B CTD #129 with	24 btl	WHO	16-44.98S	132-40.07W	g	WEST04MV
1037	050594	TDCT E rosette	3875m	WHO	16-45.10S	132-40.12W	g	WEST04MV
1431	050594	TDCT B CTD #130 with	24 btl	WHO	16-45.06S	133-20.25W	g	WEST04MV
1748	050594	TDCT E rosette	4315m	WHO	16-45.00S	133-20.00W	g	WEST04MV
2134	050594	TDCT B CTD #131 with	24 btl	WHO	16-45.01S	134-00.06W	g	WEST04MV
0040	060594	TDCT E rosette	4211m	WHO	16-44.85S	134-00.13W	g	WEST04MV
0414	060594	TDCT B CTD #132 with	24 btl	WHO	16-45.03S	134-39.99W	g	WEST04MV
0719	060594	TDCT E rosette	4371m	WHO	16-45.17S	134-39.95W	g	WEST04MV
1057	060594	TDCT B CTD #133 with	24 btl	WHO	16-44.99S	135-20.09W	g	WEST04MV

1358	060594	TDCT E rosette	4195m	WHO	16-45.01S	135-20.07W	g	WEST04MV
1738	060594	TDCT B CTD #134 with 24 btl		WHO	16-44.99S	135-59.99W	g	WEST04MV
2046	060594	TDCT E rosette	4430m	WHO	16-44.96S	136-00.02W	g	WEST04MV
0029	070594	TDCT B CTD #135 with 24 btl		WHO	16-44.96S	136-40.21W	g	WEST04MV
0326	070594	TDCT E rosette	4222m	WHO	16-44.94S	136-40.21W	g	WEST04MV
0706	070594	TDCT B CTD #136 with 24 btl		WHO	16-44.97S	137-20.04W	g	WEST04MV
0939	070594	TDCT E rosette	3620m	WHO	16-44.95S	137-20.03W	g	WEST04MV
1324	070594	TDCT B CTD #137 with 24 btl		WHO	16-45.14S	138-00.08W	g	WEST04MV
1558	070594	TDCT E rosette	3480m	WHO	16-45.02S	138-00.02W	g	WEST04MV
1942	070594	TDCT B CTD #138 with 24 btl		WHO	16-44.97S	138-40.03W	g	WEST04MV
2209	070594	TDCT E rosette	2915m	WHO	16-44.95S	138-40.04W	g	WEST04MV
0141	080594	TDCT B CTD #139 with 24 btl		WHO	16-44.97S	139-20.03W	g	WEST04MV
0330	080594	TDCT E rosette	2170m	WHO	16-44.88S	139-20.13W	g	WEST04MV
0949	080594	TDCT B CTD #140 with 24 btl		WHO	16-44.96S	139-59.98W	g	WEST04MV
1154	080594	TDCT E rosette	2535m	WHO	16-44.95S	139-59.99W	g	WEST04MV
1536	080594	TDCT B CTD #141 with 24 btl		WHO	16-45.00S	140-39.85W	g	WEST04MV
1822	080594	TDCT E rosette	3215m	WHO	16-45.01S	140-39.98W	g	WEST04MV
2206	080594	TDCT B CTD #142 with 24 btl		WHO	16-45.00S	141-20.03W	g	WEST04MV
0045	090594	TDCT E rosette	3135m	WHO	16-44.97S	141-20.15W	g	WEST04MV
0455	090594	TDCT B CTD #143 with 24 btl		WHO	16-44.88S	142-00.03W	g	WEST04MV
0645	090594	TDCT E rosette	1922m	WHO	16-45.01S	142-00.08W	g	WEST04MV
1112	090594	TDCT B CTD #144 with 24 btl		WHO	16-44.98S	142-40.01W	g	WEST04MV
1259	090594	TDCT E rosette	1885m	WHO	16-44.96S	142-39.97W	g	WEST04MV
1500	090594	TDCT B CTD #145 with 24 btl		WHO	17-00.06S	142-49.96W	g	WEST04MV
1629	090594	TDCT E rosette	1420m	WHO	17-00.01S	142-50.01W	g	WEST04MV
1822	090594	TDCT B CTD #146 with 24 btl		WHO	17-14.99S	142-59.98W	g	WEST04MV
1957	090594	TDCT E rosette	1500m	WHO	17-14.89S	142-59.93W	g	WEST04MV
2153	090594	TDCT B CTD #147 with 24 btl		WHO	17-29.94S	143-10.04W	g	WEST04MV
0028	100594	TDCT E rosette	3287m	WHO	17-29.94S	143-10.04W	g	WEST04MV
0410	100594	TDCT B CTD #148 with 24 btl		WHO	17-30.01S	143-50.04W	g	WEST04MV
0652	100594	TDCT E rosette	3413m	WHO	17-29.88S	143-50.20W	g	WEST04MV
1033	100594	TDCT B CTD #149 with 24 btl		WHO	17-29.98S	144-30.07W	g	WEST04MV
1333	100594	TDCT E rosette	3960m	WHO	17-29.98S	144-30.07W	g	WEST04MV
1717	100594	TDCT B CTD #150 with 24 btl		WHO	17-30.17S	145-10.17W	g	WEST04MV
1948	100594	TDCT E rosette	3108m	WHO	17-30.25S	145-10.21W	g	WEST04MV
2154	100594	TDCT B CTD #151 with 24 btl		WHO	17-29.99S	145-30.08W	g	WEST04MV
2330	100594	TDCT E rosette	1575m	WHO	17-30.00S	145-30.10W	g	WEST04MV
0135	110594	TDCT B CTD #152 with 24 btl		WHO	17-30.03S	145-50.05W	g	WEST04MV
0430	110594	TDCT E rosette	4104m	WHO	17-30.18S	145-50.15W	g	WEST04MV
0812	110594	TDCT B CTD #153 with 24 btl		WHO	17-30.01S	146-30.00W	g	WEST04MV
1101	110594	TDCT E rosette	4020m	WHO	17-29.93S	146-29.96W	g	WEST04MV
1448	110594	TDCT B CTD #154 with 24 btl		WHO	17-30.02S	147-10.21W	g	WEST04MV
1752	110594	TDCT E rosette	3915m	WHO	17-30.27S	147-09.95W	g	WEST04MV
2145	110594	TDCT B CTD #155 with 24 btl		WHO	17-29.97S	147-50.02W	g	WEST04MV
0043	120594	TDCT E rosette	3814m	WHO	17-29.97S	147-50.23W	g	WEST04MV
0805	120594	TDCT B CTD #156 with 17 btl		WHO	17-29.93S	149-20.16W	g	WEST04MV
0913	120594	TDCT E rosette	918m	WHO	17-29.85S	149-20.16W	g	WEST04MV
1021	120594	TDCT B CTD #157 with 24 btl		WHO	17-30.08S	149-10.06W	g	WEST04MV
1040	120594	TDCT E rosette	2620m	WHO	17-29.98S	149-10.05W	g	WEST04MV
1351	120594	TDCT B CTD #158 with 24 btl		WHO	17-30.07S	148-59.84W	g	WEST04MV
1611	120594	TDCT E rosette	3075m	WHO	17-30.06S	148-59.90W	g	WEST04MV
1801	120594	TDCT B CTD #159 with 24 btl		WHO	17-30.21S	148-49.98W	g	WEST04MV
2022	120594	TDCT E rosette	2850m	WHO	17-30.11S	148-50.00W	g	WEST04MV
2219	120594	TDCT B CTD #160 with 24 btl		WHO	17-30.06S	148-29.83W	g	WEST04MV
0118	130594	TDCT E rosette	3817m	WHO	17-30.01S	148-29.89W	g	WEST04MV
0452	130594	TDCT B CTD #161 with 24 btl		WHO	17-29.96S	147-49.98W	g	WEST04MV

0752 130594 TDCT E rosette 3840m WHO 17-29.80S 147-49.91W g WEST04MV

\*\*\*\* Remote Tracked Current Meter \*\*\*\*

1008	030494	CMRT B ALACE #334	SIO	16-28.83S	075-52.05W	g	WEST04MV
1830	130594	CMRT C ALACE #334	SIO	17-32.00S	148-34.00W	f	WEST04MV
1125	050494	CMRT B ALACE #333	SIO	16-44.79S	079-59.53W	g	WEST04MV
1830	130594	CMRT C ALACE #333	SIO	17-32.00S	148-34.00W	f	WEST04MV
1608	100494	CMRT B ALACE #300	SIO	16-45.23S	084-20.73W	g	WEST04MV
1830	130594	CMRT C ALACE #300	SIO	17-32.00S	148-34.00W	f	WEST04MV
0727	140494	CMRT B ALACE #306	SIO	16-45.07S	089-20.22W	g	WEST04MV
1830	130594	CMRT C ALACE #306	SIO	17-32.00S	148-34.00W	f	WEST04MV
1051	160494	CMRT B ALACE #341	SIO	16-44.01S	093-58.58W	g	WEST04MV
1830	130594	CMRT C ALACE #341	SIO	17-32.00S	148-34.00W	f	WEST04MV
1211	180494	CMRT B ALACE #342	SIO	16-43.11S	098-39.71W	g	WEST04MV
1830	130594	CMRT C ALACE #342	SIO	17-32.00S	148-34.00W	f	WEST04MV
1323	200494	CMRT B ALACE #310	SIO	16-45.04S	103-20.05W	g	WEST04MV
1830	130594	CMRT C ALACE #310	SIO	17-32.00S	148-34.00W	f	WEST04MV
0307	240494	CMRT B ALACE #313	SIO	16-45.18S	108-40.16W	g	WEST04MV
1830	130594	CMRT C ALACE #313	SIO	17-32.00S	148-34.00W	f	WEST04MV
1938	260494	CMRT B ALACE #331	SIO	16-44.91S	112-00.39W	g	WEST04MV
1830	130594	CMRT C ALACE #331	SIO	17-32.00S	148-34.00W	f	WEST04MV
0101	290494	CMRT B ALACE #335	SIO	16-44.98S	117-20.35W	g	WEST04MV
1830	130594	CMRT C ALACE #335	SIO	17-32.00S	148-34.00W	f	WEST04MV
0823	010594	CMRT B ALACE #307	SIO	16-44.91S	122-40.18W	g	WEST04MV
1830	130594	CMRT C ALACE #307	SIO	17-32.00S	148-34.00W	f	WEST04MV
2336	020594	CMRT B ALACE #308	SIO	16-45.12S	126-40.69W	g	WEST04MV
1830	130594	CMRT C ALACE #308	SIO	17-32.00S	148-34.00W	f	WEST04MV
0405	050594	CMRT B ALACE #344	SIO	16-45.02S	131-59.79W	g	WEST04MV
1830	130594	CMRT C ALACE #344	SIO	17-32.00S	148-34.00W	f	WEST04MV
2053	060594	CMRT B ALACE #343	SIO	16-45.04S	136-00.09W	g	WEST04MV
1830	130594	CMRT C ALACE #343	SIO	17-32.00S	148-34.00W	f	WEST04MV
0336	080594	CMRT B ALACE #319	SIO	16-44.87S	139-20.10W	g	WEST04MV
1830	130594	CMRT C ALACE #319	SIO	17-32.00S	148-34.00W	f	WEST04MV
0703	100594	CMRT B ALACE #314	SIO	17-29.89S	143-50.59W	g	WEST04MV
1830	130594	CMRT C ALACE #314	SIO	17-32.00S	148-34.00W	f	WEST04MV
0054	120594	CMRT B ALACE #340	SIO	17-30.02S	147-50.64W	g	WEST04MV
1830	130594	CMRT C ALACE #340	SIO	17-32.00S	148-34.00W	f	WEST04MV

\*\*\* Remote Tracked Drifter Current Meter \*\*\*

0744	100494	CMRT B Drifter #20037	SIO	16-44.58S	083-40.23W	g	WEST04MV
1830	130594	CMRT C Drifter #20037	SIO	17-32.00S	148-34.00W	f	WEST04MV
1454	140494	CMRT B Drifter #21147	SIO	16-45.12S	089-59.95W	g	WEST04MV
1830	130594	CMRT C Drifter #21147	SIO	17-32.00S	148-34.00W	f	WEST04MV
0753	170494	CMRT B Drifter #21135	SIO	16-44.45S	095-59.32W	g	WEST04MV
1830	130594	CMRT C Drifter #21135	SIO	17-32.00S	148-34.00W	f	WEST04MV
0204	190494	CMRT B Drifter #21132	SIO	16-45.05S	100-00.10W	g	WEST04MV
1830	130594	CMRT C Drifter #21132	SIO	17-32.00S	148-34.00W	f	WEST04MV
0605	260494	CMRT B Drifter #21145	SIO	16-45.13S	110-40.18W	g	WEST04MV
1830	130594	CMRT C Drifter #21145	SIO	17-32.00S	148-34.00W	f	WEST04MV
0356	300494	CMRT B Drifter #21134	SIO	16-44.91S	120-00.22W	g	WEST04MV
1830	130594	CMRT C Drifter #21134	SIO	17-32.00S	148-34.00W	f	WEST04MV
0812	040594	CMRT B Drifter #21133	SIO	16-44.95S	130-00.09W	g	WEST04MV
1830	130594	CMRT C Drifter #21133	SIO	17-32.00S	148-34.00W	f	WEST04MV

\*\*\* Surface Sample (SIX = Univ. of Miami) \*\*\*

2100	270394	SSXX B Continuous samples	SIX	17-30.00S	147-50.00W	g	WEST04MV
1821	130494	SSXX E Continuous samples	SIX	17-30.50S	148-36.18W	g	WEST04MV

\*\*\* Air Samples (SIX = Univ. of Miami) \*\*\*

2100	270394	ASCS B Air samples	SIX	17-30.00S	147-50.00W	g	WEST04MV
1821	130494	ASCS E Air samples	SIX	17-30.50S	148-36.18W	g	WEST04MV

\*\*\* Isotopes in Filtered Particulates (every third station) \*\*\*

2100	270394	CSPI B Surface samples	UCC	17-30.00S	147-50.00W	g	WEST04MV
0752	130594	CSPI E Surface samples	UCC	17-29.80S	147-49.91W	g	WEST04MV

\*\*\* Isotope Ratio (every third station) \*\*\*

2100	270394	SSIR B Surface samples	UCC	17-30.00S	147-50.00W	g	WEST04MV
0752	130594	SSIR E Surface samples	UCC	17-29.80S	147-49.91W	g	WEST04MV

# End Sample Index WEST04MV