

Peveril Meigs, Baja California Research Materials
1925 - 1979. MSS 530

Journal 4, 1926. July - August. Baja California.

Digitized version made available by



Copyright: UC Regents

Use: This work is available from the UC San Diego Libraries. This digital copy of the work is intended to support research, teaching, and private study.

Constraints: This work is protected by the U.S. Copyright Law (Title 17, U.S.C.). Use of this work beyond that allowed by "fair use" requires written permission of the UC Regents. Permission may be obtained from the UC San Diego Libraries department having custody of the work (<http://libraries.ucsd.edu/locations/mscl/>). Responsibility for obtaining permissions and any use and distribution of this work rests exclusively with the user and not the UC San Diego Libraries.

1926 (Coverall 4)

III

Spencer

A. M. M. M.

Spencer

M. M. M.

July 5, 1926. San Isidoro de San Jose (pl-6)
Return Am SP. north mission,

July 9, 1926. San Diego.

San Antonio beach.
July 10, →

July 12. A St. Thomas mission
island on a ~~patrol~~ ~~patrol~~
to St. Vincent Canon.

Diocese of St. Thomas mission

July 18. Santa Catalina mission

July 21 San Miguel (mission Vieja)

July 28. Guadalupe mission

July 29, Road to Mexicaltli

Aug 1 (Monno on Rosario & San
Fernando.

get
time mag. time.
time mag. time.

100
32.72

2000 = 18.3 m

10 Sam \$ 1.20 July 27 494 for Miss me

1929
 17
 1.45
~~1.62~~
 took up

195.
 25
 70
~~100~~
 290

115
 45
 50
 100

L. Mack
 B.S. 15:
 De Quincy, T.
 "Murder - - - no. 1000"

El Venedito
 Fiddle + 1.
 In the gloaming.
 End of a Perfect Day.
 Die Grenadiere.
 Erlenkönig.

P. M.
 4
 2 4
 2 5
 4 1
~~2 5~~
 4 2

700

4
 5
 2
~~5~~
 4

1 4
 1 2
 2 1-2

1-10
 1-5
 2-4
 1-1

4

July 5, 1926 (Sam Dickson, compañero)

San Jilote to San Jilote

- 6 - left camp - NW (Down
6:15 - N 60 W ^{rise -} 3,190' (In cañon
Cottonwood, live oak, sycamore,
willow. Slope, mesquite, grey
sage, flower heather.)
6:25 - (Climb out of cañon on
N side)
6:30 - N 40 W - (Downing N ridge
3,250' "sage & flower"
heather, "yucca")
6:45 - N 70 W 3,180' - (Some veg. Also
"wild lilac", "wild plum"
and one dead *Labrador*
Granite Mt + (?)
"ginger cholla" all along.
7 - N 65 W - 3,370' (New "pitchfork" Dulce
Butt same. Also
penicillate & tall
blues. A few
juniper & "Heather"
7:07 - N 60 W - 3,575 - top of hill (1)

7:15 - N 85° W - 3,315' (Same)
7:30 - N 75° W - 2,850' - nearly all
block sage
7:40 - N 20° W.
7:50 - -2,400' - (at San Antonio)
(Rancho.)

Opuntia, tanques, cattle
one family. Lots of people.
Sometimes someone passes
nearly every week in the
summers. We stop 5 min
at San Antonio.

N 20° W from San Antonio -
over mts.

8:15 N 20° W - 2,350' (400' above
San Antonio)

Sparsely veg.
much rocks,
moss, granite,
lardice in
cholla much
white leaf plants,
3 rock sages
flower "bleeder"

8:25 - N 10° W - 2,000' - 9' wide
open to land (2)

8:35 N. 60 W. - 2,950 (dry canyon)

8:40 - N.
dripped metamor.
wild lilac & plum

8:55 - N. 5 W. - 3,575' in canyon.

Occasional water
in canyon

9:05 - N. 15 W. 3,675' - First W.W. in pine.
High shrubs coming
in (heather madrone,

etc. Paloblanco)

9:15 - N. 60 W. - 3800' - Rolling metamor.
country, heather,
yucca formata

9:30 - N 40 W - 3,700' - trail branch

9:35 - W
two took W.
branch

9:45 - W 10 S - 3,500'

9:50 - W 20 N

10 - N. 60 W. - 3,200'

10:15 - W 10 N - 3,175'

10:30 - " - 2,950' (Temp. 95°)

10:37 - N, then N E

10:45 - N W - 2,950' (Walla Walla)

11 -
P. Galeabius ranch.
Mex. - 1 mile

11:15 - E 20° W - -

12 - E. - 3060' left lunch place, by brook in canon

S. of Wall Lake ~~off~~
Temp. at 11:50 - 96.5°

12:13 - NE - 3,225' - (up side canon)

Trunks sycamore cottonwood, still in canon. Orange parasite on pitted twigs. Black sage + flower heather on slopes.

12:18 - SE

12:21 - NE

Some mesquite.

12:28 - S 40° E. - 3,210' - brook crossing

Grey sage the center flow level

12:35 - N 35° E

Line - oak, sycamore willow, cottonwood.

12:38 - E.

12:45 - E, 20° S. - 3360' Lander creek still

1:00 - N. 25° E. - 3425' " " " "

1:05 - E, 10° N. Rolling country (9)

- 1:5 - E - Parcel field
 1:50 - 3,600' South Cray }
 about a mile }
 1:45 W. of Sierra Wood }
 Barnstead (opposite
 + figs)
 1:53 - NW -
 2 - " - 3,650'
 2:15 - " - 3,760' - Granite ~~field~~
~~3,700~~ (?) his
 N. of the trail.
 About 1/2 mi. long
 2:30 - " - 3,800' - On granite
 Granite sand,
 Weather bush,
 grass, ~~little~~
 12' Madro nes
 2:38 - N 32 W, -
 Since 2:10 we
 have been on SW
 limit of granite
 " "
 2:50 - N 25 W
 3,325'
 Oak flowering SW.

Veg. dense, gray sage and other
 soft, low shrubs + scrub oak
 on metamorphic. On points
 higher at land, the dense
 distinct big bushes. (see 2:30)
 Diff here just associated with flatness
 3 - NW - 3380' still on granite
 margin. soft level
 on this flat.

3:17 - NW - 3510 - Divide

3:30 " - 3710

3:35 " - " In metamorphic

3:41 - N. 75 W. - 3825 -

3:45 - W. 105.

3:47 - N.W.

3:53 - N. 50 W. - 4100' Divide

4:10 - " - 3975 Live oak

4:25 - W - " again.
 a thin stream,
 flowing S.W.

4:35 - SW - 3860 - Divide

(6)

4:37 - W.

4:40

4:52 - W. 20 N. - 3375'

- San Jose in
Sight: N 30° W

- Orzo parasite
on bill plant.
In grass, black
edge & flower heads.

4:55 - N 25° W. - 3340'

Our
pretty flat
plain.

5:02

3,285' - Road
N. 10° W

5:07 N. 10° W - 3,150'

- Again on
between line
& met. Pan.

5:13 - - 3125'

5:30 - - 2600'

5:55 PM. - - 2,600'

San Jose.

Next morning - 2,510'

It has been a long hard
traverse.

Picks

1 1/2 hrs.

35 miles (by map)

July 6

Up at 5 AM, after a solid night

skirt

We turned back after bird leaving,
 and spent the morning working on the Ford till
 she ^{she} ^{like} ^{well} ^{on} ^{of} ^{explains}.

Pers. It took us an hour to go up
 the "dry bog" hill, two of us pushing
 a clocking. It also took us 3 gallons
 of water: 1 gallon apiece - drinking not
 in radiator. Rasmussen went with
 us. He is going back to Norway next
 fall.

Veget.

Mescal begins on this San José

road at an elevation of 2,000 ft.
 Camp at Legaspe 2,200 ft.

$\begin{array}{r} 22310 \\ 65 \\ \hline 18480 \end{array}$
 $\begin{array}{r} 2375 \\ 436 \\ \hline 2250 \end{array}$

(212)

mil. ca
 10
 ..

At San Jose	July 6 to	14.5	14	32.5
Legaspe	July 7 to	46.		
San Antonio	To	61	96	
Santa Tomasa		09.4		63
July 8.	In the Stomach Valley	19		10
" 9	" "	24.4		5
" 10	At Que de la Playa Stomach Mission Place	43.7	71	19.3
" 11	In the Stomach Valley	61.		17.3
" 12.	In the Stomach Valley	81		20.
" 14.	" "	29,999 90 30000	61	9.
" 15	At Encarnada.	26		36
" 16	Ataque de Casta	68	148	42
17	San Miguel de la Sierra	29		61
18	" " to Santa Catalina	139.6		5
19	Santa Catalina to new Encarnada, via Bal del Castillo	14	94	79
20	Encarnada	29		15
		<hr/>		
		Bill rendered		
"	San Miguel	65	409	36

July 7.

pers to go as far as San Antonio today
Our way broke on "rust-bone".

fortunately, near good-gang blacksmith.
He repaired it, welding it with a
copper cent. But we had not gone five
miles when it broke again. This
time I repaired it with the never-failing
baling wire, and it held.

We met Rosas comandante of
of Matanzas and a friend and their
wives and 3 children in a deer. They
were constantly getting blowouts, and
were out of tubes, so I ~~just~~ sold them
one of my used ones and gave them an
extra valve inside and loaned them the
pump (their was lost) and wrench. They
did not even love any kind of wrench! And
the baby had a high fever! yet they were
starting out on a 2-wheels' hunting
expedition to Las ~~Villas~~ Caleros, expecting to
see deer at San Telmo, of all places!!
I might be lucky if they even got to
San Vicente over the bad stretch below
San Jacinto.

We stopped a while at San Antonio
and talked, & I left a letter for Lover.

July 6	8:20 P.M.	LC945PE	66°	
July 7	5:45 A.M.	"	58°	Heavy Dew. clear.
"	8:30 P.M.	Santo Tomás Lower Cañon	60°	
July 8	6:00 A.M.	"	59°	High Fog 340'
"	9: A.M.	"		
"	8:45 A.M.	"		Clear
"	2 P.M.	Santo Tomás Sta 3		Strong N25W wind 590
"	8 P.M.	Sta. Tom., L. Cañon	56°	calm.
July 9	5:30 A.M.	" " "	57°	Cal. m. Hi fog. Some dew.
"	8 A.M.	" " "		Clear in N. mts.
"	8:30 A.M.	" " "		Clear calm
"	9 A.M.	Chapin in Sta. 8.		Brisk N.W. wind Sta. 8.
"	1:45 P.M.	Sta. Tom., 1 mi. W. Sta. 11	77°	Brisk W.
"	8:40 P.M.	" " L. Cañon	56°	Cal. clear
July 10	5:45 A.M.	" " "	62°	Cal. Hi fog. 185'
"	9:40	Beach, Sta. Tom.		Hi fog. -150'
"	10 A.M.	" " "		Clearing.
"	10:15 A.M.	Hill N. of Beach		NW brisk wind. 275'
"	12 N.	Beach, Sta. Tom.	70°	" Cloudy fog inland 2 mi.
"	2 P.M.	" " "	71.5°	"
"	4 P.M.	2 mi. Tr. beach		Clear (cloudy beachward) (cloudy on N. point)
"	8:30 P.M.	"Mission Ranch"	62°	clear.
July 11	8:45 A.M.	" " "	75°	clear.
"	11:45 A.M.	1 mi. W. Sta. 11	79°	"
"	1:00 P.M.	Saligo, " "		Dark white in valley
"	1:30	" " "		W. brisk NW wind
"	2:30	" " "		NW calm
"	3:15	" " "		Dark white

July 8.

At car 4801

Map of Santa Tomás Valley.

Veg. Sta. 1 - Above old Olives + tunales; aniseo.
Slope: black sage, wild "plum", buckeye bush
clim. Big dust whirls in w: park valley.
July 4, 5, 6 went very hot, says Juez
(age 66, been here 54 yr.)

Pers. Various cooking attempts, trying to
use flour & cornmeal surplus.

Pictures of girls all dressed up.

Brake (foot & hand) and reverse not working
just high + ~~revers~~ low; we have to turn off
power to stop.

Cult. Olives and tunales planted by frailes
are still growing; irrig. ditches, too, are
visible.

Jul. 11	8:30 AM	62°	Station Camp	Faint Wind	Clear. Dew
Jul. 12	4:45 AM	60°	" " "	calm,	Hi Fog. Dew.
"	6:15 AM	66°	" " "	Faint NW Wind.	Clearing (sunny)
"	8 P.M.	66°	" " "	" "	Clear. No dew.
Jul. 13	5:30 A.M.	54°	" " "	"	Heavy dew
"	7:30 A.M.	72°	" " "	"	"
"	7:45 AM	74°	" " "	"	Gentle NW breeze.
"	11:30 P.M.	88°	" " "	Brisk Wind W.	Clear
"	8:50 P.M.	66°	" " "	"	Clear.
Jul. 14	6 AM	60°	" " "	Faint Wind.	Clear.
"	(at 10 P.M. it was calm)				
"	9:30 AM	84.5°	9:30 A.M.	Brisk wind	Clear.
"	8 P.M.	69°	N. entrance	Brisk N. to W. wind.	Clear.
"	8:30 PM	69°	"	"	"
"	9 PM	67°	"	"	"
Jul. 15	5:30 AM	58°	"	Calms	Fog
"	6 AM	59°	"	Faint SE	Clear (Fog, cañon)
"	12:30 PM	68°	S. Sidg. Ensenada Estero	Clear.	
Jul. 16	12:10 P.M.	79.5°	41.6 - at camp	cloudy (was rain)	NE Wind
"	1:30 P.M.		San Gabriel Valley	thunder storm	5:15° E. Wind
"	2 P.M.		Thunder storm	over. Wind shifted clockwise to NW.	
"	5:15	86°	Camp near San de Cristo	Faint Calm.	No, muggy after rain. Humid mesquite pollen.
Jul. 17	5 A.M.	65°	" " "	"	No dew
Jul. 18	6:30 AM		San Miguel de la Sierra		3,100' bar. reading
Jul. 18	8 P.M.	69°	Santa Catalina Mission		3,600' bar. read.
Jul. 19	8 AM	84°	" " "	"	3,600' " "
"	8:50 AM		" " "	"	Center S. Wind.

July 9. July 9¹

Res. More mapping!

Successful came soca back + apple sauce.
"Poco loco" man.

San's traverse up cañon. He found

coll. adobe horns, like that of Ros
Santo Domingo and San Pedro (latter of
stones, however).

July 10. Sat.

To the beach at Santa Anita.

24.4 to start; 185' later reading.

24.4 Old adobe ruin, 30 yd. by 7 1/2 yd., 4 rooms,
walls 20" thick, like bits of bricks. Adobe
on inside. On terrace of good silt-sand.

Much worm-eaten square beam
across cañon; N. 30° E. ^{20 yds} from bldg, ^{beams,} as string
15' above terrace; old remains 20 yd. long
around W. terrace + imp. dishes in
direction. Some tracks to be seen 13' on the
side with in 1.5 yd. start with the

(11)

July 19. | 12:20 P.M. | 87° | near Canon | Breeze NW, Cloudy -
 Raining - Thunder.

They sometimes have rain every day for
 30 days in summer.

July 20	6 A.M.	72°	Canon near Encanto	Clear. Breeze.
" "	7 A.M.	83°	" " "	" Breeze ^{SW} wind.
" "	7:45 AM	56°	" " "	" gentle NE wind. (then just reaching the side of canon.)

1 28
 12375
 95
 96

veg. The veg. is mescal, flower
bushes, black sage.

36.7 miles: End of trip.

Cult. Mescal pits on 60' terrace, N. side
valley. Much shell deposits, both sides
inward.

Photo. #2 of mine on big camera.

Santa Tomas valley mostly facing
S. 20° E. 2 P.M. F 11, 30"; bright
cloudy.

Photo #3 of mine on big camera. The barrow
N. of the town. Facing about N.W.

Clim It didn't get clear at the mouth
of the Santa Tomas Cañon all day.

Cult. The only ranch in the valley below
camp has water coming from a spring
in a side cañon. Next it is a well
45' deep and now dry. Note the
criying necessity for the valley.

The man in that ranch thinks the
dobe mine is of the time of the prehispanic
Big castor oil + algarrobo bushes in the
valley. Some on top of well.

Cult. on 33 a house, occupied.
Cattle ranch.

- Year 34.7 - mound begins
35 - Viki's begins
36 - equilibrium begins.
36.3 - Beaman's place. Shells & metate.

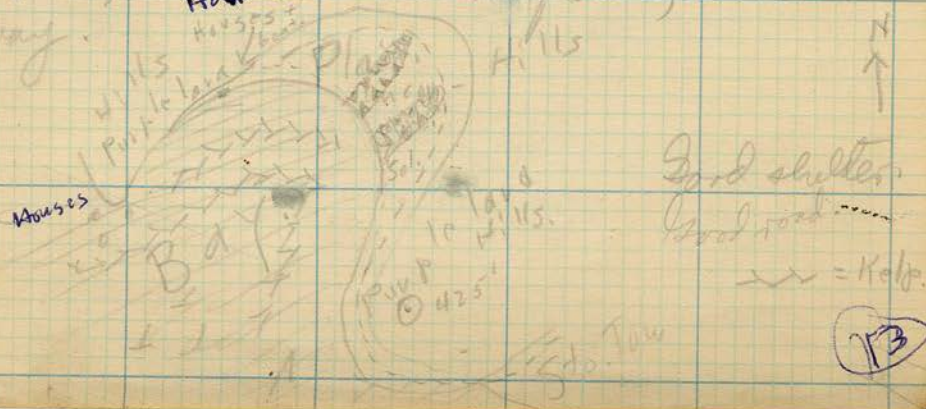
Beach, St. Thomas. (Cany is
about 335' above sea level)

Lagoon at mouth, breaking thru
sand, hole to sea at the N.
edge. Drop of 38' per mi. down
the cañon

Grav. Heavy purple lens, N. side of
mouth. Dark, hard conglomerate, S. side
of narrow mouth. Sandy beach.

Old sand dune on top of 15' block
conglomerate cliff.

L.F. Hill N. of mouth is 425' high. West
60' high of the same. N. of hill, curved
way.



July 11.

Here. We slept in the old
ruin overnight. 8 quail & got with
two shots: five with one shot
3 with another (#4 shot best for these
birds of vitality.) Bail, then fry, is best.

veg. Microestructure milk the cotton
blue sparrows, line-odd, willow: no
cottonwood, as above.

Cult. ~~Recent~~ Burns says that the
old ruin was built by the friars.
All the Americans around here, when asked
about it, say "Tuier Sabo. Una mision
niega."

On Burns' place is another old ruin,
but it was built by Eston 67 years
ago.

He also says that the settlement on the
bay N. of the Point beach is an abalone &
fish cannery.

St. Thomas houses commonly have adobe
roofs.

Valley get Quercus agrifolia towards lower end: dry
hills of E. to cork oaks, & pines at W.
to 2200 to 2000 burns, & grapes

5009. Prob. granite on S. side of
Sto. Thomas Valley, with some gneissite.

July 12. Mon.

Pers. Mapping E. of town, Santa Tomas.
We had the house of Sr. Eutrasio & his father
as headquarters. It is in the spring by their house
that the friars met some ^{her} fr. Very friendly
& agreeable people. He is well-read, has a
number of books (a rarity!) and has lots of maps
on the friars. He tells of a friar who he knew
in Todos Santos (D. Sr.) who had a book
written by the Cap. of the San Pedro de San Pedro
Todos Santos has the best library he knows of
(B. G. books & maps.)

Common Veg. (see Cathartes folder)

Poncillo

Alfalfa silvestre (mulassol)

Canutillo ♀ (good medicine) (like Equisetum)

Chamiso (?) (a pet) (flower leather)

Plantilla (crucifera thorn)

Escoba amarga (?) (bright green, like Poncillo)

Damasquillo ("wild plum")

Cajobabo ("leuc. mistletoe" ♂)

Herba marea ♀ (good medicine) (adobe used)

Cult. says ^{to} Cathartes folder:

The frailes had much intercourse with the women. One (he named Luiz) lived in the sands down the cañon, with his wife (naming her). The children always bore the mother's name, as the frailes were not supposed to marry.

There was 3 frailes at this mission, + 60-70 soldiers. The number of frailes varied from 3 to 5, one of them at the head.

The San Pedro Martyr Mission was used as a center for working placeros. Santo Thomas, La Yquilla + Santa Rosa also had supplementary shelters for the frailes (minutill mistletoe at La Yquilla + Santo Thomas) Guadalupe + Decano as simple supplementary shelters for the

Viña Misión (San Miguel), All the
Santa Catalina de Las Yllenas Misión
was moved from an earlier one near
Valle Trinidad (he says).

San Vicente Misión has ^{had} a slab
of concrete + stone he heard ^{had}
loads buried under it; when he heard
we were at San Vicente, he thought
we were after them, so he spent all
one eve digging for them; go deeper,
he says. There are inscriptions on
a rock (right side of opp. water hole,
the side Guadalupe cañon); he thinks
Greek. Others farther down.

Drain

well #1 - 8' to surf. of water.

" #2 - 7 1/2' " " "

Windmill #1 - 19' to surf. of water

Springs from which the town get
its water & trailers get their in
a line along ~~the~~ the arroyo
wall.

of water up

One now dry 5 y. ago. Old pile
sequia from it.

The cañon usually has water

flowing all the way all year. This year, only in upper & lower portions.

Cult. Analoptera grow just below camp in the cañon were planted by Eaton. Old flour mill there, reported to have been run by water - power from a spring high up on the Hill. Eaton's rainbow loaves in Guacala.

^{ruin} on the N. side, near camp head, is reported to be work of parties.

The exclamations by the head spring are said to have grown up from two posts the poles stuck into the ground for a gate to the reservoir.

In Santa Theresa, they take turns using the spring water, a day & a night at a time; rotation every 8 days.

Drain There has been no water running in the valley except for five years. Usually it runs every winter.

Vca. Red ironilla grows only in the sandy gravelly areas. Outlines the anthers in pale green. Sta. 20 slope have black sayes fruitilla, flower leather, white - leaf sharp (Chamisso) (18)
Geo. Andate, Sta. 20. Purple.

Drain. The lower end of the valley is flooded usually every winter (but hasn't been for 6 or 7 years now.)

Cult. When this occurs, the people down here move up the valley & cultivate land above. Land in lower end rough. The upper part, rented or just used (from Govt.) Barley raised much more than wheat, at the latter parts.

The much better in lower part the last 15-16 years for good crops. Before that, it was fine.

Can't compete with U.S. fruit even in Encarnada, as for the wine fruit is not so good. They sell all the grapes they can raise to the refinery at \$0.09 a bush.

People die, & whole families die out here, many, too, go away to work.

Burlingame says he made the horse three year ago to burn lime for the houses. Much better lime up the valley, above last barley field.

Pers. Saw shot 12 quail with one shot yesterday (estimates on my age translated). (Jan 23):

Men	Women
29	22
28	
29	

Hay On slopes of miscel, flower heads, heads (bush), damascus, black eye, legume (small)

July 14.

Cut.

88.1 Store.

88.2 Sand, + storey below

88.25 1/2 side bottom

88.35 under, less strong, ~~at~~ ^{at} bottom

(Good sandy silt, *Sarcobatus*, *oe*, widely spread.)

88.85: Sand + pebbles, little *Sarcobatus*, *oe* will be dominant, beginning of road head.

89 other side, + another escarpment.

(*Comutilla* more than others)

89.2. end of road head. cor. gainfield. bearing cor. *dingar*, N 80° E. sandy silt.

89.35 *vingal* at road. bearing *vingal* line, S 75° E.

89.7 *oe*. *Sarcobatus*, *oe*. *Flora*, *beetles*, *ojoba*, *black sage*, *Lomaquillo* begin, *Sarcobatus*

89.9 end of *vingal*.

10.15 *comp.*, by *evapor.* Will later enter the formation.

Cult. By ~~the~~ eucalyptus reservoir, N. Entrance,
best little truck garden I have seen in
this Dto. Big lime trees, etc.

Andonegui, proprietor of the big
mine lands; grapes raised without irrigation.
Water from the canon in back of the ranch.

Water in well in white sand, 40!

In ranch house, (north w.), 18!

High price of clothes.

(Pers. Thrice mistaking me for Mexican.

July 15. In Encarnada - Lodge.
Pers. S. A. films.

July 16.

Veg. Live oaks in cañon. On sides, alfalfa
silvage, beather brush + palo blanco all the
way. Some black sage, Whitesage, too, along
the cañon bottom.

On fan (?) surface, W. of San
Rafael valley, abrupt vegetation change,
to juniper and white sage.
Considerable grass here as well as on
cañon sides.

At 53, in San Rafael Valley, mesquite
in scattered bushes on the plain. At
Castillo bushes accompany the mesquite in
pinyons.

At 59.5, "finger clesla" come
in with the canutillo. There
is no more mesquite here.

at 60.5, vegetation becomes suddenly
sage-like.

Base sandy silt brown soil all
along.

July 17.

Sanga de Cristo Cañon to Santa
Caterina Mission.

Pers. All went well as far as Alamo.
There Knudsen ("Shorty") gave us a
nice meal, with his company's canned
goods (he is keeping the machinery of the
gold mine in order while his company
waits). A friendly little chap. He and
Christman (who knows the Indians
well) showed us over the gold
plants and the gas project of bygone
days.

Christman described an Indian
gambling game.

While getting on road to Santa
Caterina.

July 18. Santo Caterina Mission.

Veg. "Dati" is the name given to yuca here. Biznaga & little mesquit common on slopes.

The Indians here ate Datiles, biznaga, tomates (nopales fruta), piñones, venado, conejo

Pers. Much trouble with the Indians here. They are a gang of thieves. {at least some of them are: especially the old "paul vijer" of the jefe.} Not having a permit from Rodriguez, we were ordered not to come in at all: "too dangerous": unless we would give ten or fifteen dollars away in small amounts to the people. But we had only some \$5 gold pieces, so told them we had nothing.

etc. etc. Next we went to the mission. The big settlement of the Indian reservation is at San Miguel & the mission is some 3 miles farther up in the hills: two families in the "Valle de Santa Caterina" below the

Mission

(Cult. Speaks) Delightful language they all

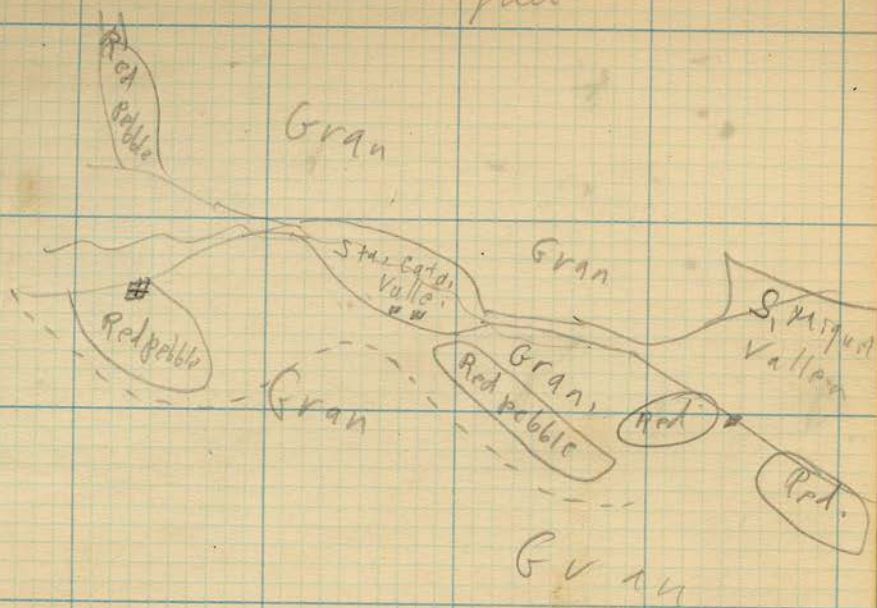
Clim. They say they have six inches of snow & quite frequently in the winters at San Miguel.

G. F. San Miguel Valley is lined on both sides with the red, pebble-like hills. ^{lined}

Veg. These San Miguel Hills have a thick growth of luznaga, as well as plumes. Umbels - topped luznaga.

July 19.

San Miguel



L.F.

Between San Miguel + Alamo, all one red plain, with a few ^{insets} mounds sticking up.

House of Jefe S. 10° E from red hill.

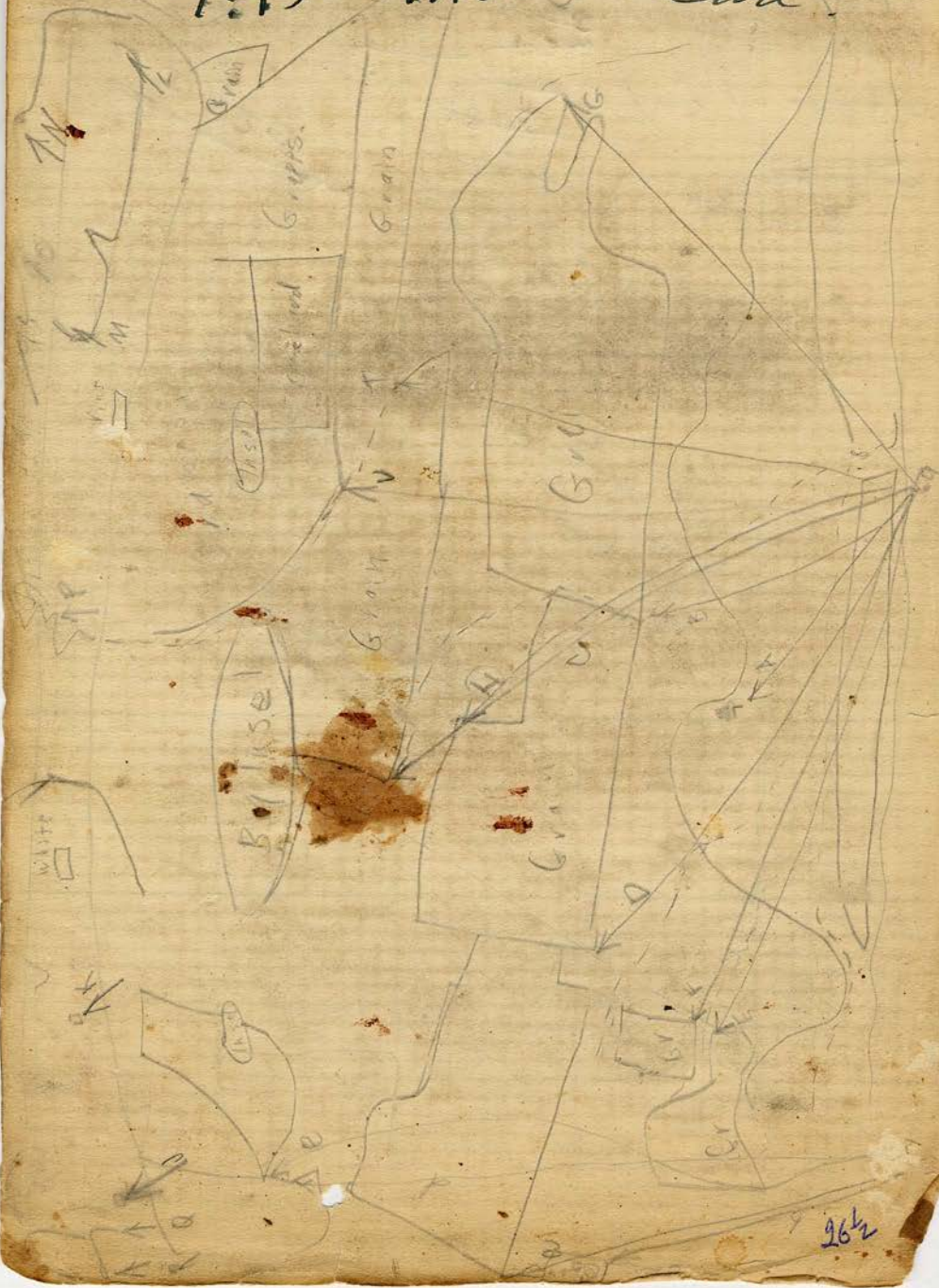
East valley S 30° E

West valley S.

(I have been using 15° bearing, should be 10°)

35.7 mi. - End ~~red~~ hill
37.1 " to Jefe's house.

7:15 W.G.S. Sun



~~1932~~
~~1916~~
~~1896~~
1800
~~1846~~
~~1835~~
~~1832~~

~~1771~~
~~927~~
563
45
1431

~~1801~~
~~1821~~
~~1801~~
~~1805~~
~~1777~~
~~1777~~

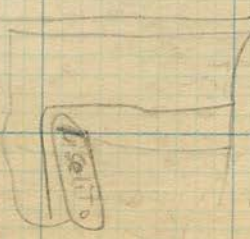
~~1837~~
~~1837~~
~~1837~~
~~1837~~
~~1837~~
15120
~~1810~~
~~1810~~
~~1810~~

~~1800~~
~~1800~~
~~1800~~
~~1800~~
~~1800~~

~~1800~~
~~1800~~
~~1800~~
~~1800~~
~~1800~~

~~1800~~
~~1800~~
~~1800~~
~~1800~~
~~1800~~

Ch. 52
25
1800



40.9 mi. = our farthest " "

NW from the sign -

Reserva de los Indios "

42.1 - back by sign

44.8 back near jefe.

Red hills & lignite

52.6 - branch to Las Vegas.

Res. We took a detour to within a
couple of miles of Red del Castillo in
Ojos Negros valley, to a nice ranch house.
Spelled roads everywhere in the valley.

Camp at nice little place in the
canon not far from Encarnada. 6 teams
of the species, due to evil-tasting water,
apiece,

July 20.

pprs. Car pulled fine after its rest.

(78)

San Miguel Valley

(La Mision Vieja)

July 21, 1926.

Bar. Read. camp 8:30 A.M. - 80'.

Geog. As far as I went along the top of the S. L.F. cliffs today the material was basalt except at the slight breaks where the friar's old road reaches the top. There the material is a white Challey material (tuff?), with some shell deposits! (Fossil), as though it had once been a small egg beach. There is a hole here, with a gully in it, however. A hundred yards W., another hole reaches the edge of the cliff.

Cult. Indian shells, mussel & clam, are found up at this 200 foot level, over an area 100 yd. long, somewhat back from the edge of the cliff; but chips with them, though no charred remains. [see p. 31 for profile]

Veget. No wood on this S. side, though there is on the north side opposite.

L.F. The general slope up on top is about 3° , away from the cliff toward a curving valley up high.

Some 200' - 300' up is an area of unbraided depressions, some 350 yd. wide from valley to steep cliffs. Parting or sliding

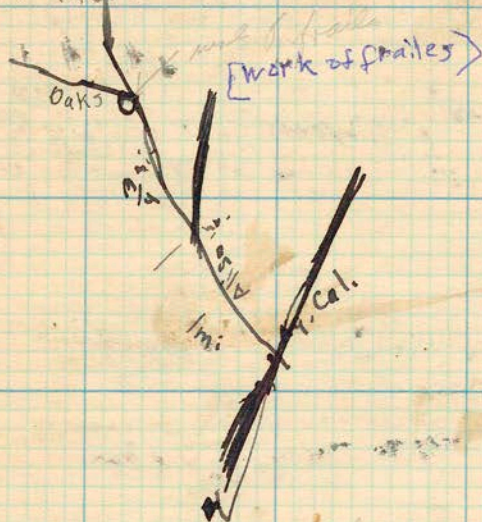
San Miquel

July 20	8 P.M.	66°	Camp on N side	10% cloudy: w. Calm.
" 21	6 A.M.	66°	" " "	Cloudy (just touching cliff top).
" "	8 A.M.	71°	" " "	Cloudy.
" 22	8 P.M.	65°	" " "	Very thin fog.
" "	7 A.M.	68°	" " "	Cleared. Still 570 2 miles in from beach.
" "	8 A.M.	69°	" " "	Clear. Brisk SW.
" "	8 P.M.	66°	" " "	20% Cloudy. Dew.
" "	12 Midn.	67°	" " "	Cloudy. Flat Calm. Clearing.
" 23	7 A.M.	69°	" " "	Dew. 15% cloudy
" "	8 P.M.	65°	" " "	
Wind W. 25° S in A.M.; W. at 9 A.M.				
" 24	7:15 A.M.	65°	" " "	10% cloudy (hill tops & seaward) Gentle Wind, W. 25°.
" "	12:30 P.M.	77°	2 mi. up from camp	N 35° w. Brisk.
" "	8 P.M.	63°	Camp on N. side	10% cloudy.
" 25	7:40 A.M.	69°	" " "	50% cloudy Gentle W. 35°.
" "	8 P.M.	64°	" " "	Clear. (partially cloudy all day) Gentle N to SW.
" 26	8 A.M.	74°	" " "	Clearing.
" "	8 P.M.	67.5°	Enceneta. Good pass	Clear. Gentle wind.
" 27	5:30 A.M.	68°	" " "	Cloudy. Brisk Gentle N winds.
" "	7:10 A.M.	69°	" " "	"
" 28	5:45 A.M.	67°	" " "	"
" "	12 Noon	84°	Guadalupe, by Valley	" " 2 mi
" "	8 P.M.	63°	" " "	Brisk SW wind.
" 29	Sunrise	49°	" " "	Clear. W 90°.
" "	7 A.M.	65°	" " "	Clear. E faint.
" "	2:35 P.M.	96°	13 mi. (Road) "Dove Valley" 11300'	" " W faint.
" "	8 P.M.	65°	na Sueda 2620	Clear. N 60° W gentle.
" "				" NE faint.

Cult. Sam went up the valley, and heard
of an Indian village (San Jose?) up a
side canon.

The Frailes' road goes to Guadalupe.

The ranchhouse is rented to the gun club
now.



Also, old road of frailes on N side, near mouth.
[also, old road of frailes in N side, near mouth.]

July 30	8 AM,	83°	Buena Vista	W	Clear	Not recorded night.
" "	12:30 PM	90°	Lumb. plant (21 in)		26091 (wind) 39251	
" "	8 P.M.	100°	Malapico	(Not using thermometer)		
" 31	1:15 P.M.	114°	"	((My thermo))		
		↑				

S. Wall San Miguel Valley.

"Tuff" ↓
"Tuff" ↓

Trails road.
↓ Fossil shells.
"Tuff"

cliff + Talus (Basalt)
"Sea ponds" (Basalt)

Valley floor

Tar weed valley + Basalt dipping S.
Front Basalt Sea ponds + Valley Floor.

S

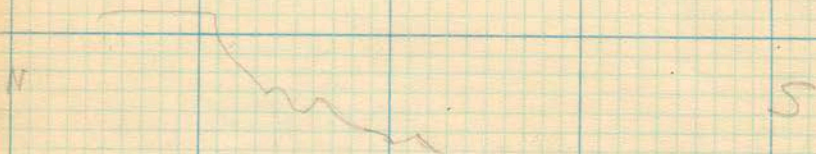
Profile

N

(2)

July 20	S. Miguel	64.6		36
" 23	"	68.3		4
" 24	"	72.		4
" 26	to Ensenada & side trips	15		43
" 27	in Ensenada.	17		2
" 28	to Guadalupe	51		34
" 29	to Buen Suerte	91		40
" 30	to Calexico	70		79

L.F. interesting lay sag probe holes of 500
 near the big hole in the N side of low
 Principal Shale. Walls were slope not vertical
 as in usual hole, but smooth.



AN mission

Left here, a foot, low an abandoned stream
 course.

Remains covered with weeds, Colnett plants, and
 yellow trumpet 2' high, and some wild wheat.

L.F. Mission wall 2 1/2 in dia.

Lots of holes lying around, with conoids. Lycopodium
 ferns.

Plates on inside of outside

The tiled floor has been opened by a pit dug in
 the bottom.

Big doorway 9' high.

Base of curved tile (1879)

Cor. mission 40' above ring ditch.

5-25 ft. E of mission ~~separates in~~ ~~is~~ ~~not~~ ~~well~~

~~and~~ ~~big~~ ~~the~~ ~~mission~~ ~~chairs~~ ~~one~~ ~~fully~~ ~~out~~ ~~of~~ ~~the~~ ~~ditch~~ ~~at~~ ~~the~~ ~~top~~

OK. True at several points 4200, 4300, 4400.

7x260000 (Engelhardt)

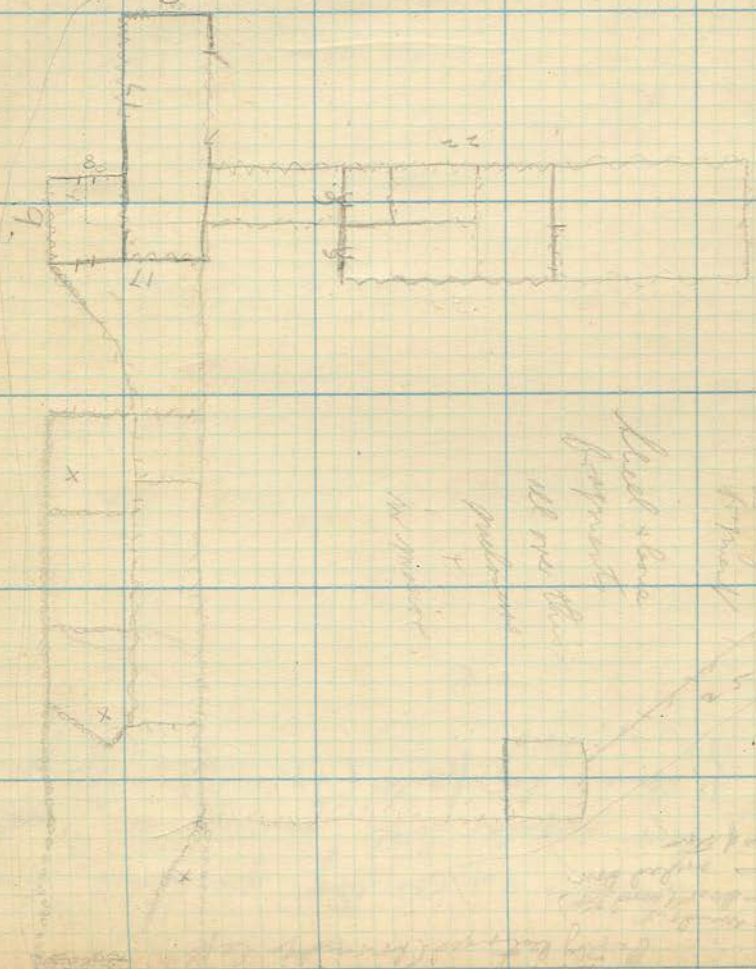
(Price = 30" ?) call it less 10% for yk.

Call it 33" (930)

(52)

13 1/2 ft. S of wall's outer boundary marks

b



13 1/2 ft. S of wall's outer boundary marks

Hand-drawn
plan

11 ft. 10 in.
12 ft. 10 in.
13 ft. 10 in.

X

Walls face N 20° W (15° decl.)

M

Calc. Polishing shell here in my pocket. (50 mg)

Calcite (?)

San Ysidro type.

White chunks in the big formation near the
mine; low angular little inclusions. Used for
plaster + cement by fossils (?). Tiles lying around
top.

Onyx floor tiles 15" x 8" x 1 1/2"

Musical shells 3' below the floor.

Peris: Red stone 4' to 6' long. Red colored.

~~Red top, in between, white (dirty) 2" dia, not
crystals + buttons.~~ ~~small.~~

Also late specimens I saw had black diamonds, with
yellow lines in between.

2" stones on the side.

L.S. Red stone on N. side - wide area of dead,
raggy, pinkish glass around the rocks in place.

July 26.

Worked all morning, home to Ensenada in afternoon. No mosquitoes at Ensenada. They were bad every night at San Miguel. Swam on beach at Ensenada. Lots of people drive on the beach. Dine dinner at Wong's, table out cornmeal - flour diet.

July 27. Spent the day at Ensenada, looking over Galbraith's books, getting food fixed, buying in a few supplies, and writing letters. Had new band linings and a new running board + see under rod put in.

Whitely stage driver and his description of the road to Mexicali - terrible grades (drive into hole if necessary), poisonous water.

July 28. Left Concepcion. On road to
Mepide, near turning - off place
is lower zone.

L.F. 30.00 miles: Granite rocks - pine
country, with large kettle swales,
Cult. ~~and~~ devoted to ^{local} raising. Russian
farmsteads, with lots of ^{wheat} farm machinery
etc. Very agreeable Nordic atmosphere.
Full-bearded Russians and their white-
~~bearded~~ wives (on heads).

Veget. Chamiso on slopes (class ~~later~~ ^{sage},
broad-leaf "sage" flower heather,
wild "lilac"). Live-oaks + Syringa in
Agua valleys.

Guddalupé:

Cult. The Russians look upon the Mexicans
as a pretty sad lot. They do it worse
fast enough.

They have two flour mills, run on
a cooperative basis, to supply flour to
the town.

When we stopped for quite a while,
no crowd gathered around us at all. Everybody,
man + woman, was busy, and even the
children were too busy playing to hang round.
In a Mex. town, there are always a couple
of men resting by the house ready to
talk.

(10)

Guadalupe Valley. (41 mi.)

Cult. 46 families of Russians living here now; were 106. But they are emigrating to the U.S. Conserve Russian language and dress: peasant blouse with belt at waist, little Russian cap. Women, white kerchiefs, sometimes little beaded cap. Only 2 Mex. families here.

"Mission". Box reading, 10:30 A.M., 900'

Big angle of turrets, with old stone foundation (?) sunning near them. Lots of bricks tiles lying around inside the angle of turrets. ~~Many~~ A fragment of pottery: thick ($\frac{5}{16}$ " thick) but smooth red finish (black in interior of cross-section). Mission located on a slight rise by the river, with steep slope along its riverward edges. (By big white house at S. edge of town.)

Town. A town of windmills.

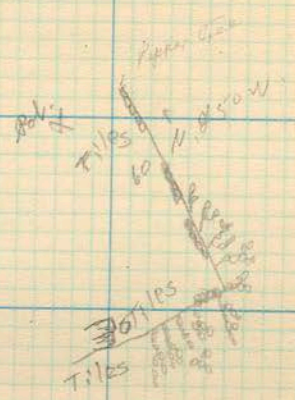
Houses are of adobe, often whitewashed with shingle rods.

L.F. Granite "rock-pile" type.

Cult. The people are woefully ignorant of the mission. By good good luck we happened to meet the man or woman that the mission was. No one else knew.

M...

Walks N45°W (15° Decline)
Dip 10° W.



up
20'

Quarrying Traps.

A
A'
1"
B
B'B

c - Black sage; "flower heather"; tar-weed, broad-leaf
"sage", w/ coarse granite. Reddish soil.

July 29.

Sancti Spiritus to District of Macquarie.
"Dear Valley" (see notes on climate)

L.F. A very level valley with chains of little rounded smooth hills in it. One of the hills examined is of slate, which strikes the same way as the general bedding of the hills.

Cult. The flat part of the valley has indications of former cultivation. A close vegetation of "spine" grass, or more of short bushy sunflower. The little smooth hills are covered with flower heather & *escoba amarga*. Some areas of Colvett weed, esp. *abalga*.

L.F. Valley some 2 mi long.

Veget. Live oak & sycamore in ~~central~~ S. end. Cottonwoods & house (alder) near N. end. Willow more near S. end. *Baccharis*

Beside the modern sandstone, on a slope near N. end, in square of old cottonwoods, indicating long use of the valley.

Veget. *Arundo donax* at N. end - some 2' in dia.

L.F. Gallies & wide sways at N. end.

L.F. At 78 mi (road) we reach granite rock pile, out of mountains.

(10)

valley appears on the SW side of the
Cerro - valley we have just entered.

veg. Mesquite with the chigtras, with
Alamo & willow, Flower heather, Escoba
Almarga, & some Copiba. Alfalfa alvete.

In the sandy wash we have just crossed
sugar sap & yoncilla.

79 mi. road we turn up a side cañon.
Some blue sage with the chigtras.

veg. Same from here on, without mesquite.

veg. at 85, a little live-oak grove
& yoncilla clear (read) 1750'. Quite a
few yuccas appear here. Great
fields of alfalfa silvestre, broad-
leaf sage. 88, 2. - a little live-oak
grove. 88, 5. - Press of brush heather &
~~Yucca~~ ^{modroto} ~~copiba~~, with other stuff. (No
more Alamo, willow). 89. - Monte well
under ^{Alamo} ~~Alamo~~ with brush heather, modroto,
somb ~~somb~~ ^{somb} ~~somb~~, broad-leaf sage, alfalfa alvete,
flower heather; elev. 2500' (read.)

Buena Suerte I call the place

where we stopped at ⁹¹ 91 (road) ~~the~~
For the water was out of sight in the
valley - had little more water,

Next half-mil for supper, tea,
^{men} half-wit for supper, tea,
Yeg. Palo colored enters the formation
about here. Excursion.

July 20. A.M., returned 2 ? creek

Pers July 20 A. M. returned to river. creek.
to duffel bag.
for duffel bag.

July 30. Alvaños (97) (read)

L.F. A pretty rolling flat in the Santa
County, sandy soil.

1 eq. Live oaks, white mounts: pop, Colorado,
white oak, etc.

o. 17. A fruit orchard just set out here this year:
Apples, pears, apricots, peaches, cherries.

Some cases. A bark worm attacks the
apple saplings. Water 8' below
surface, 3' deep. Pumped.

Agua Hedionda
Agua Hedionda

99. Ranch & water
- 106, water. None.

1 eq. At 09, the first junipers appear,
and continue more & more densely (with
slope of mounts, too). Also, many
small pines begin (4-needle brittle brush
type)

L.F. Metamorphic rocks. Mining claims, etc.

At 13 mi. (read) elev 4,125' (read) Top
of divide. Little higher than where junipers begin
of a divide

(43)

W.F. at 17 mi. (road) we enter Sierra Grande
Apino.

Vegetation 21 mi. (road) stop for lunch. Some
some 25' high; rather open: scrub
and the chief monte plant, & white
Sage: fungus many.

Top of big drop: 25 mi. (road)
3705' (road).

Per. turned off gas.

(we had 3 1/2 gal. of Buene fuel)

Vegetation On the 3500' Drop (steep E. front
of mt.), there is yucca, then "fine mesquite",
then ocotillo. ~~and~~ toward bottom,
broad-leaf sage. At bottom, ocotillo and
mesquite. One hill we crossed (50 mi.)
had almost no veg. All terribly hot
desert.

55.5 mi. (road) to Piedra Blanca (Cerro) 70 to Calapico.

Per. had to borrow 2 gal. gas to reach
Apicalis. No gas at ~~Piedra Blanca~~
(top of peak).

(214)

Per. Slept on floor of auto camp house
for a while. On the highway, please
Dexter 8 P.M., 100° (see p. 30)

July 31. In the morning, we went over the
plant of the Colo. R. Land Co., of which
Mr. Clark is Mgr. Mr. McLaughlin told
us all the details of this great land renting
company. rent cotton land on the Mexican side
to China, etc. to increase rents, they have
erected a cotton gin, oil plant, etc., and have
an elaborate system of making loans, selling the
cotton, relating with alfalfa, etc.

In afternoon, headed for San Diego.

Reached Ant. Springs, where we
stopped at the garage to have a terrible bunch
biped. Approved to be two connecting
rods. We had to show him much
money we had, & went to bed.

(45)

Aug. 1. Total bill, \$8.50. Spent 7 and gave
him a new canister for the balance. Then swapped
an old tire for a new front cylinder feed
system, & sd out again, with \$3.30 between us.

Says Fra. Otey:

[Refer to Overhill 2, p. 35]

2,000 Indians at San Fernando.
4,000 at El Encino.

The Indians would be sent to another mission for punishment and would be terribly whipped, so that they were terrified, and cry out.

They would be divided up into parties, some to go to the beach to get shells, several hundred to collect food from the surrounding country, ^{and some sent to take moccasins.} ~~and some sent to take moccasins.~~ The food would all be brought down to the mission and given to the frailes, who would divide it up among the Indians as needed.

The Indians lived in huts of branches with their tops bent over and meeting above to form a roof, and their bases set around an excavation a couple of feet deep: half-deep houses. The terrace part of the mission was just covered with Indian huts.

There was a big body of soldiers stationed at the mission - at least fifty - to protect the frailes. A big corral by the mission where the bad Indians were kept.

Little tomatoes planted by the frailes, still persist in their descendants. 416
180

Grape vines & ~~also~~ big trees of a
small variety. Also, remains of an old
well just N. of mission.

(47)

~~(47)~~

Verandry's "Diccionario Geografico, etc."
1874.

Nome "Calif." probably from "Reyes de
Cipondian", in vogue in Cortés' time.

Caricatures of men & women in
wreath of dressed men & women.

Map- 1541: the pilot Domingo del Castillo showed
it as peninsula. But many writers
after that showed it as island, called by
many "Cajina".

1521 - fall of Cajina. Aztec.

1526 - Cortés first touched B. Ca.

1533 - Nervando Grijalva.

1534 - Nuño de Guzman

1537 - Francisco de Ulloa

1540 - Francisco de Alarcón. (Domingo del Castillo
was his pilot)

1542 - Juan Rodriguez de Castilleo

1544 - Pedro Portel de Cassate

1596, 1602 - Sebastián Vizcaino

1615 - Juan Muelli.

1632, 33, 34 - Francisco Ortega, Diego de la Nava.

1636 - Estéban Castonelli, near Anulegá;
discovered the first "paseo", & sent ^{papers} home
to Mexico.

1636-1767 - Jesuits took possession of Peruvia.

1642 - The first mission founded -
San José.

1697 - Nuestra Señora de Loreto Mission founded
16 Jps. Missions.

Santa María, the last, founded

The same year they were expelled: 17
Pernandinos. (1767 - 1774)

1769 - San Bernardo de Belicató founded

The Indians of Santa María were
removed there.

Dominicos (1774 -

1774 - Nuestra Sra. del Rosario de Binalabo

1776 - Santo Domingo de la Frontera.

1780 - San Vicente Bayet.

1787 - San Miguel Encinas.

1791 - Santo Tomás.

(Large Clero: Coahuacinos from
25° to 33°, + some Pacific Isles)

The Peninsula has always been
under control of the central govt.

Chief industries (1874): pearl fishing, (which
says he has fallen much due to lack of
"armadores"); export of Orchillo; salt from
el Carme + S. Juanito. exportation of salt meat,
fruit "pasados" like date, fig, + grape, + minerals.

Quano + woods + gums should be developed
Mod trade with Costa Calif, Guaymas,
& Mazatlan. \$2,400,000 input, \$2,282,974

8 schools of primary education, and
8 teachers. Over 300 students. One
first primary school of 75 students.

(The Indians did not eat "tejon" because
they thought its midea looked like human
beings midea.)

1872 - Divided into municipalities.

Subdivided into 1 city, 10 pueblos,

6 misiones, 2 colonias, 30 ranchos,
34 haciendas y 1 mesquedo.

3 judicial divisions, ^{el Norte}, Centro, + Sur,
with heads at La Paz, La Magdalena,
& el Real del Castillo; appeals from divisions
in Sur & Centro are to Mazatlan; in
Norte, to Sonora.

1872 - Santo Tomás had 5,500

indians. : biggest of peninsula; ~~the~~
~~Paz second~~ San Antonio second,
with 3,771; La Paz third, with
3,698. Santo Tomás: much cattle,
fruit,

Tell Goldbaum p. of boundary
monument.

July 16

Sat	June 12	L. D. Green	86	}	166
June	13		86		+35
	14	San Juan Apitro	65	}	31
	15	San Apitro	25		
	16	"	3	}	62
	17	San Vicente	2		
	18	"	1	}	62
	19	"	1		
	20	San Domingos	1	}	62
	21	San Domingos	6		
	22	"		}	23
	23	" (to sea)			
	24	"			
	25	"			
	26	San Juan de los Rios	27	}	44
	27	San Diego Camp.	11		
	28	San Juan Jose.	6		
	30				
July	1				295
"	2				
"	3				

Second hill,

95 3/8 mi.

May 6	Only to J. B.	350 348	
May 7	- to P. L. Davis.	100 88	
May 8	- to Occidente	125	687
May 9	- to S. Diego	45 65	687
May 10	- to Occidente	19	
" 11	- to Encanto	(10m) 52	
" 12	- to Sta. Tomas	30	
" 12	- Christmas	51	332
" 14	- to S. Quintin	68	332
" 15	- Rosario	52 50	307
" 16	- S. Antonio	49	
" 17	-		
" 18	-		
" 19	- Omité & return	86	86
" 20	- Aguapanela	25	59
" 21	- Rosario	26	59
" 22	- La Oca	7	
" 23	-	9	
" 24	-	7	
" 25	-	9	98
" 26	-	9	98
" 27	-	20	
" 28	- to Santa Rosa & return	20	
" 29	- Rosario	9	
" 30	-	13	
" 31	-	4	
June 1	- to Sta. Quintin	48	381
" 2	- to Domingo & Salt	30	381
" 3	- San Antonio	50	381
" 4	- to Santa Rosa	51	
" 5	- San Diego	16	
		116	1120

24 5/23

1120 50 11

M. + Ms. of Calif.
Engelhardt,
Index to vol II - IV with

Supplement to Vol. I
James H. Barry Co., L. S., 1916.

Aug 1, '75 - Sep 1, '76,
500 baptized at S. F. Bay,

Albino, Barbado alone.

Sail Captains, 1818.

S. F. de Velasco
Rancheros mentioned in

Captain's reports:

San Luis Santa Rosa, San
Francisco, De La Laguna, San
Juan de Dios, Sr. Domingo, Sr. Miguel

Father Zepherino -
Wrote on S. P. Mission ?

Smallpox carried off many,

1780 - 1782.

Records of S. D., Rosario, S. Domingo,
S. Vicente.

This Sales: real: the only Dominican
who wrote a word on B.C. of
any thing, was at S. D. some.

Mission S. P. Mateo & Sta. Catalina.

San Telmo, San Ramon, San
Rafael were subordinate to the
real missions.

Name #1. Adobe. Tule roof. Abandoned.

" #2. " . Palm roof. ~~Wagon~~ barn, good use, 2 dom.

The 5' drop of the terrace #1 is 200 yd. S. of #2.
2 in. fine silty brown sand, big
ditches on sides of field.

M.T. has patch less graded mud surface. Big ditches

" #3. Adobe. Tule roof. Abandoned.

" #4. Wattle + mud. Tule roof. Abandoned.

" #5

Nittell, Theodore H.

History of Calif. 1885. S. F.

Gives, among other things, the antecedents of the
Franciscan, etc.

Mexico, Spain home island.

Bancroft has many collections of documents in
his collection.

Are

ms

Mariano Guadalupe Vallejo. ms

Cajonero: Pinaro Villacata a San Diego. 1769 M.S.

Crespi, in Pinaro, too.

Trujillo route, 1766.

Fathers stationed at San Fernando at various times:
Campa, Buxter, Senara, & Cambow.

Successful missions in the Sierra Corda of Mexico founded by college of San Antonio de Valencia

Gaceta de Mexico - period of 1767-1824.

Palou, Noticias

Doc. Hist. Mex.

U. S. Surveyor-General's Office, S. D. : Collection of official documents turned over by Mex. in 1846-7. Some of these archives in L.A., Salinas, + San Jose too.

Santa Barbara has the largest collection extant of mission papers.

Scattered documents collected by Taylor, + in five vol. in archbishop's library, S. D.