

*Report and Index of  
Underway Marine Geophysical Data*

**Cook Expedition**

**Leg 21**

**(COOK21MV)**

R/V Melville

(Issued July 2002)

**Ports:**

Apia, Samoa (24 March 2002)

to

Majuro, Marsahll Islands (15 April 2002)

**Chief Scientist:** Roger Larson

University of Rhode Island

[rlar@gsosun1.gso.uri.edu](mailto:rlar@gsosun1.gso.uri.edu)

Computer Tech - John Chatwood

Post-Cruise processing and report preparation by

Shipboard Technical Support Group,

Scripps Institution of Oceanography

La Jolla, CA 92093-0223

**NOTE:** This is an index of underway geophysical data edited and processed after the completion of the cruise leg and is intended primarily for informal use within the institution. This document is not to be reproduced or distributed outside Scripps without prior approval of the chief scientist or the Shipboard Technical Support Group, Scripps Institution of Oceanography, La Jolla, California 92093-0223.

GDC Cruise ID# 295

*Report and Index of Navigation  
and Underway Geophysical Data*

Processed by the Shipboard Technical Support Group  
Scripps Institution of Oceanography

**Contents:**

**Index Chart**

Overall track chart of cruise leg, dates, ports, and mileage of each type of data collected.

**Track Chart**

**Profiles**

**Sample Index**

**Index Chart**

Overall track chart of cruise leg, dates, ports, and mileage of each type of data collected.

**Track Charts**

Annotated with dates and hour ticks

**Profiles**

Depth, magnetic and gravity free air anomaly vs. distance. (Sections of track with seismic reflection data have a wide black line along the bottom of the profile.)

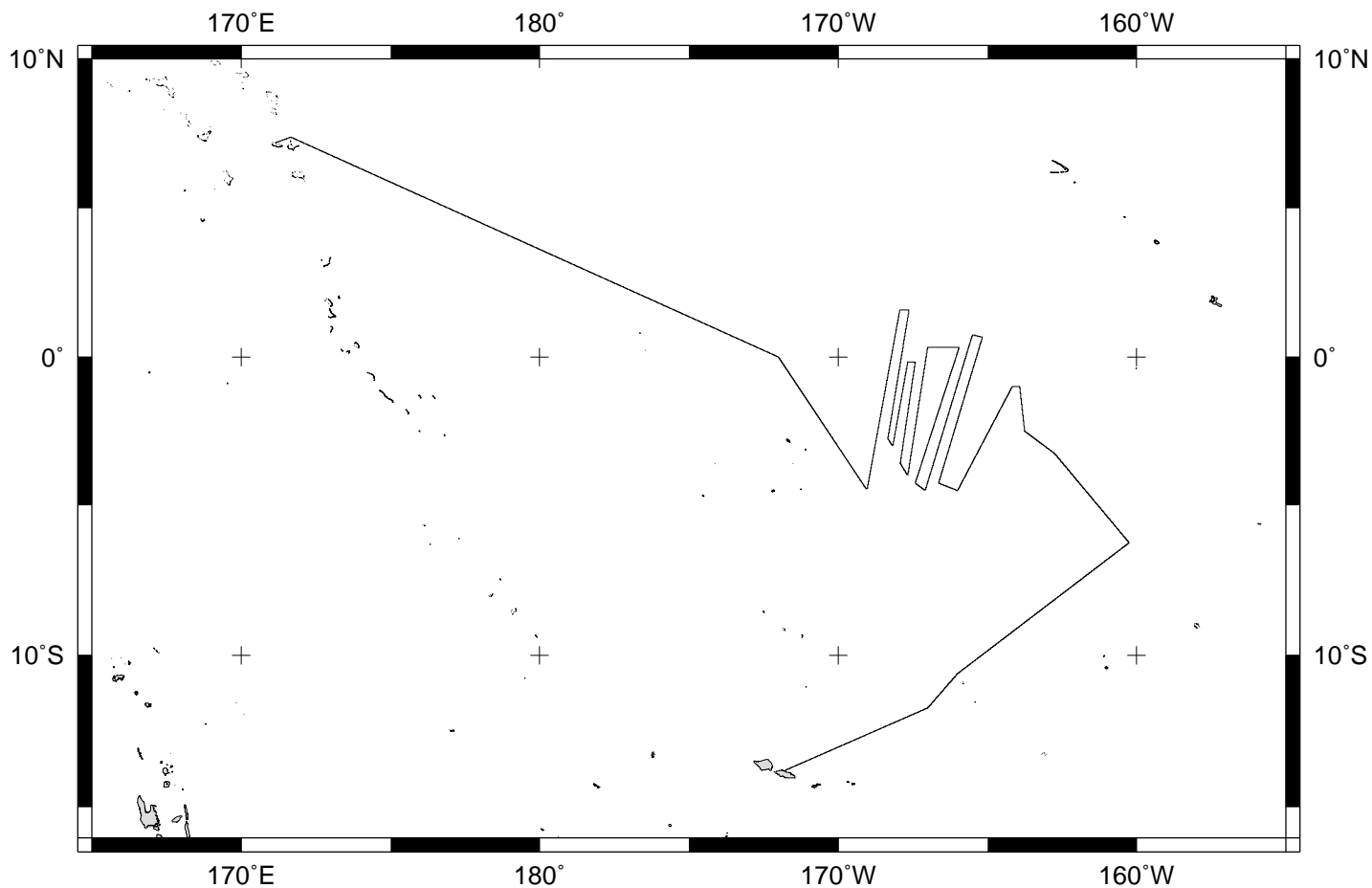
**Sample Index**

List of begin/end times and positions of all underway records as well as samples and measurements from other disciplines collected on the leg.

**NOTE:**

For information on the availability of this current digital data as well as archived digital data contact Stephen P. Miller, Geological Data Center, Scripps Institution of Oceanography, La Jolla, California 92093-0220 Phone: (858)534-1898, internet email: [spmiller@ucsd.edu](mailto:spmiller@ucsd.edu); or his Website: <http://SIOExplorer@ucsd.edu>

Rev 6/2001



**COOK EXPEDITION LEG 21 (COOK21MV)**

=====

**CHIEF SCIENTIST: Roger Larson, University of Rhode Island**

**PORTS: Apia, Samoa - Majuro, Marshall Islands**

**DATES: 24 March - 12 April 2002**

**SHIP: R/V Melville**

**TOTAL MILEAGE OF UNDERWAY DATA COLLECTED**

**Cruise-5321 miles**

**Magnetics-5139 miles**

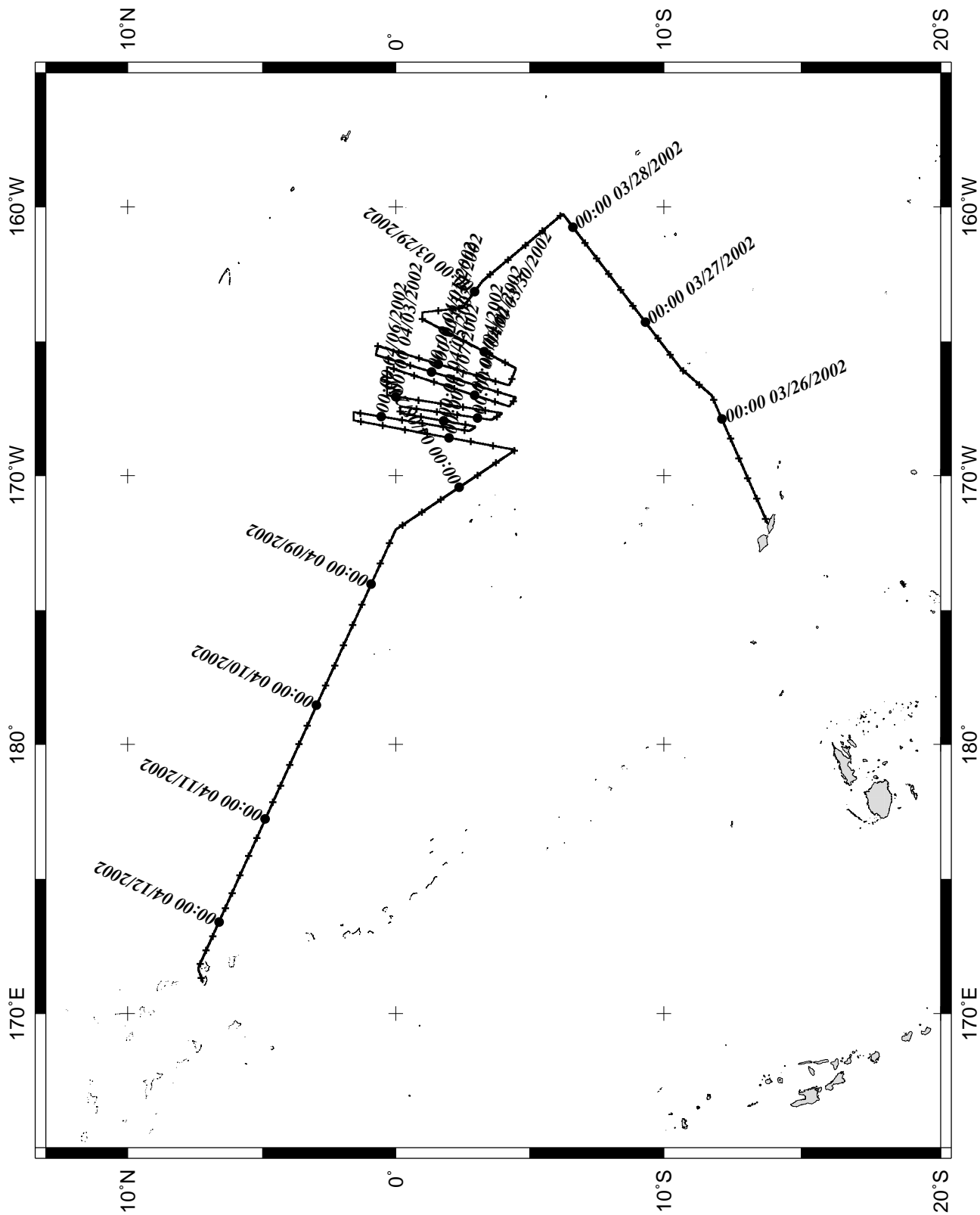
**Bathymetry-5295 miles**

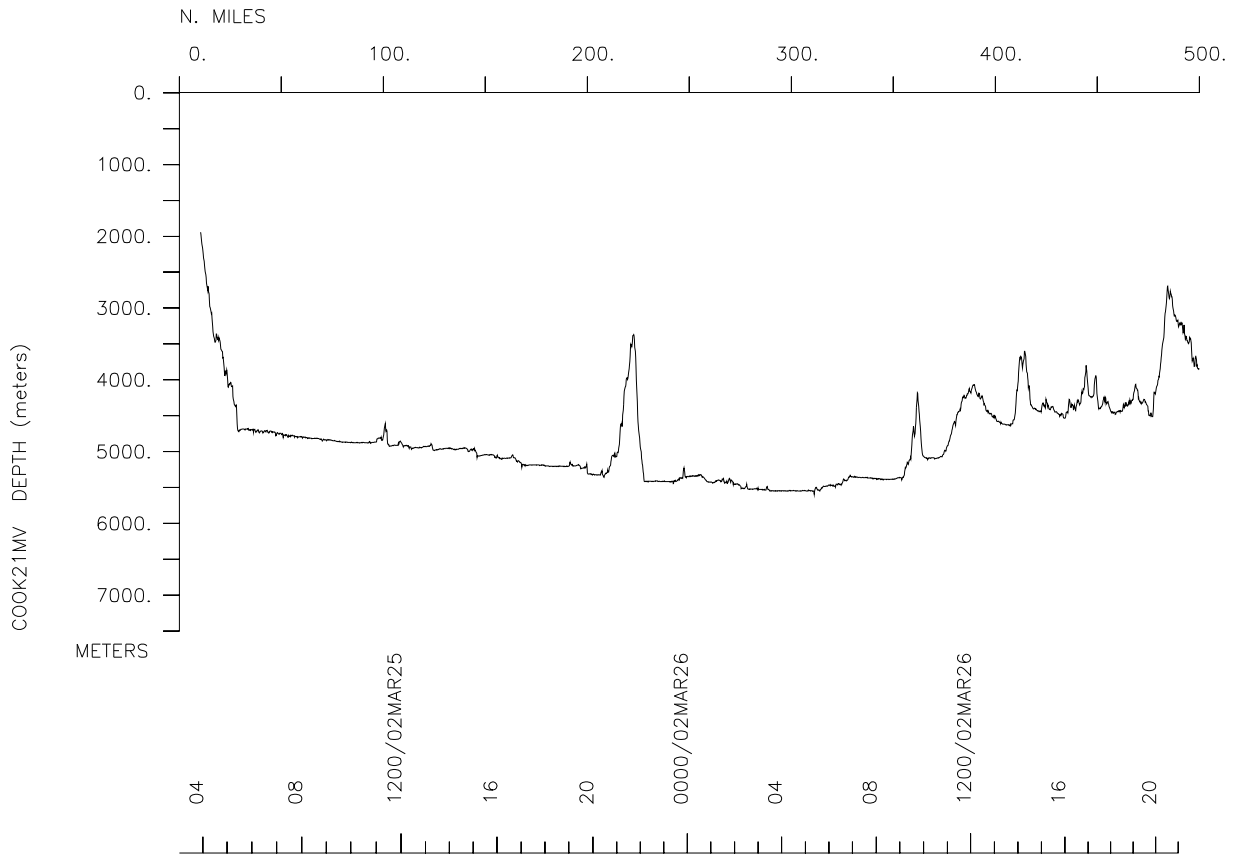
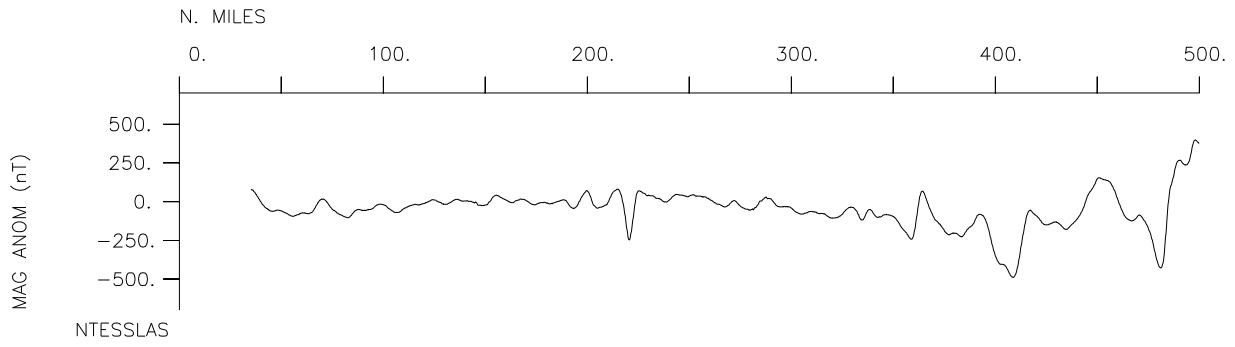
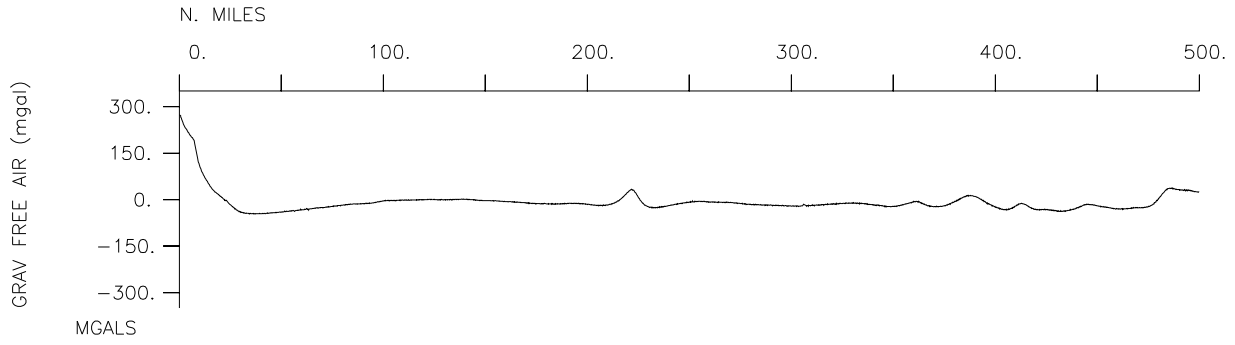
**Seismic Reflection-none collected**

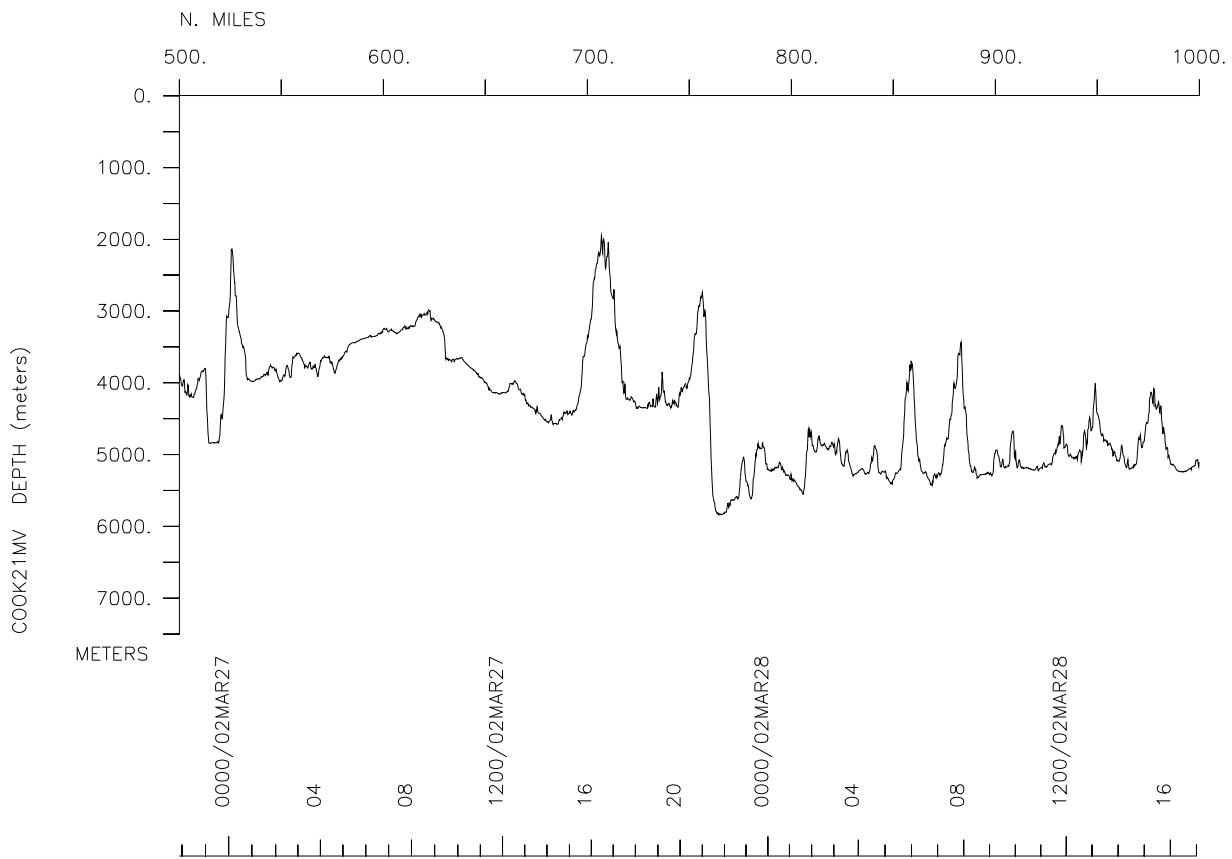
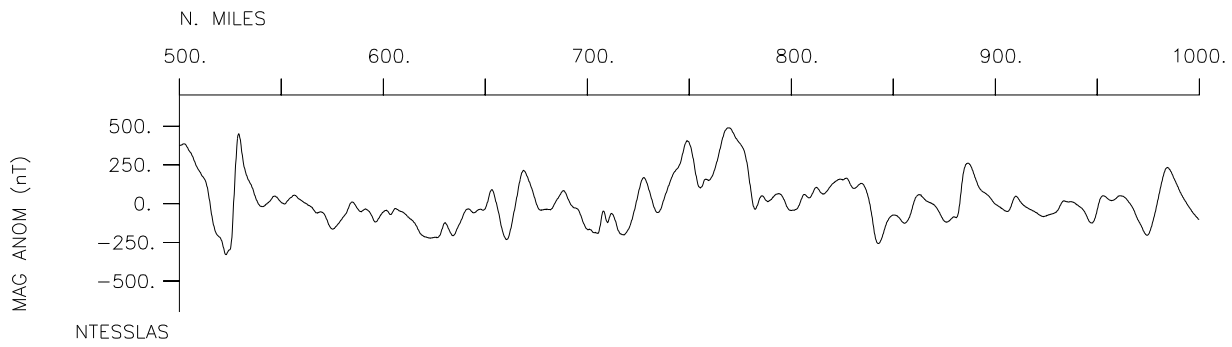
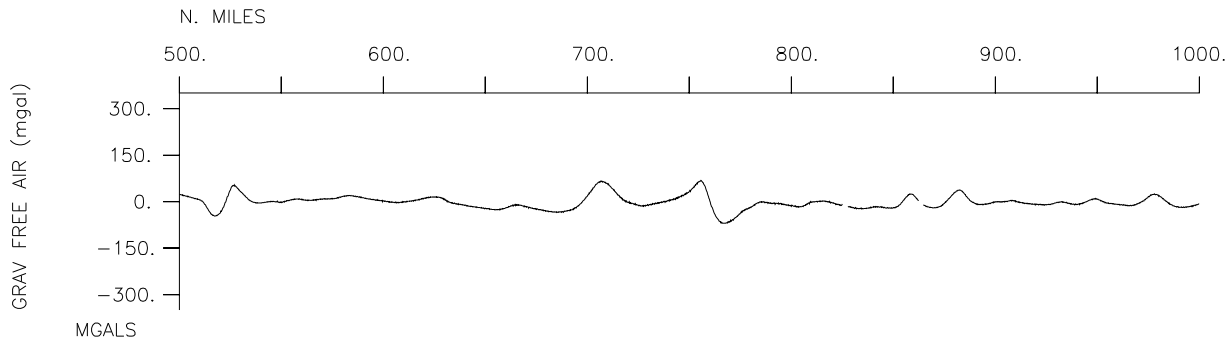
**Multibeam-5292 miles**

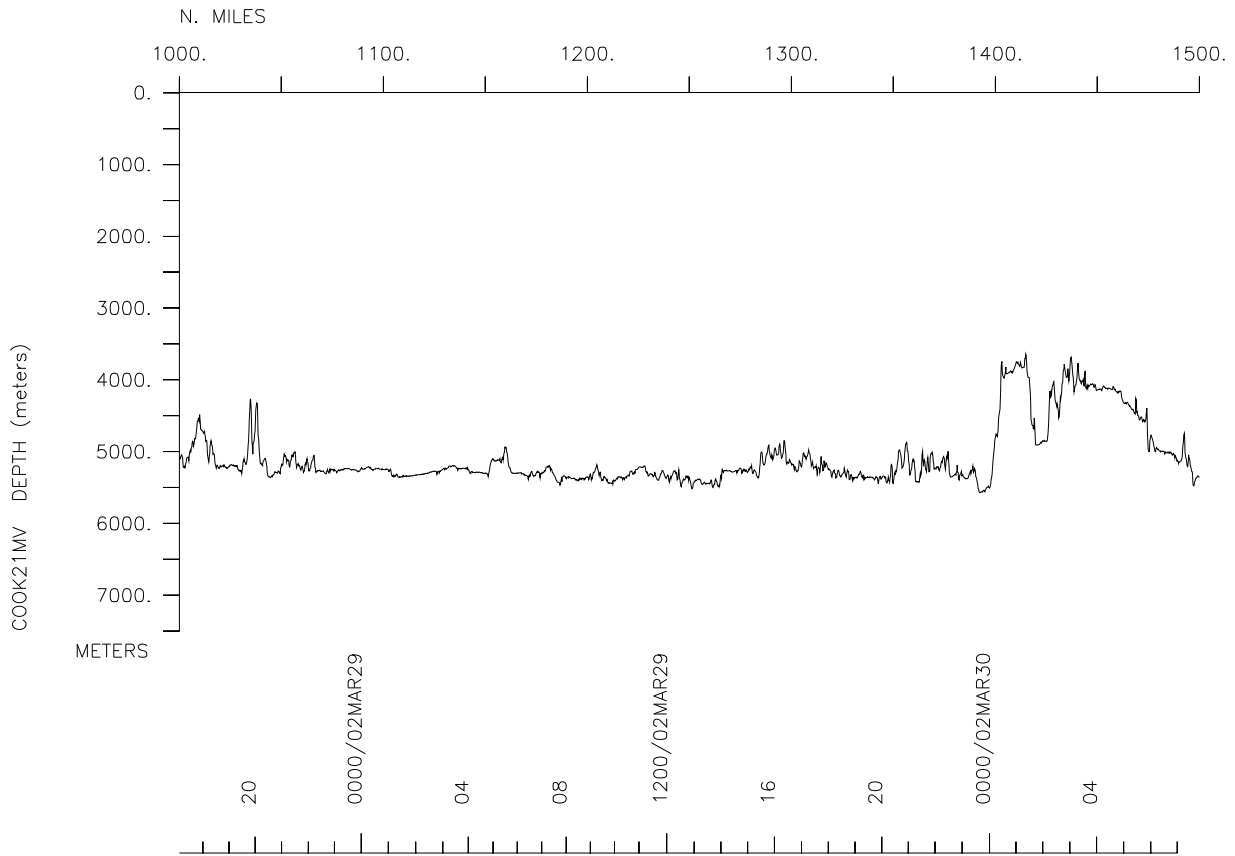
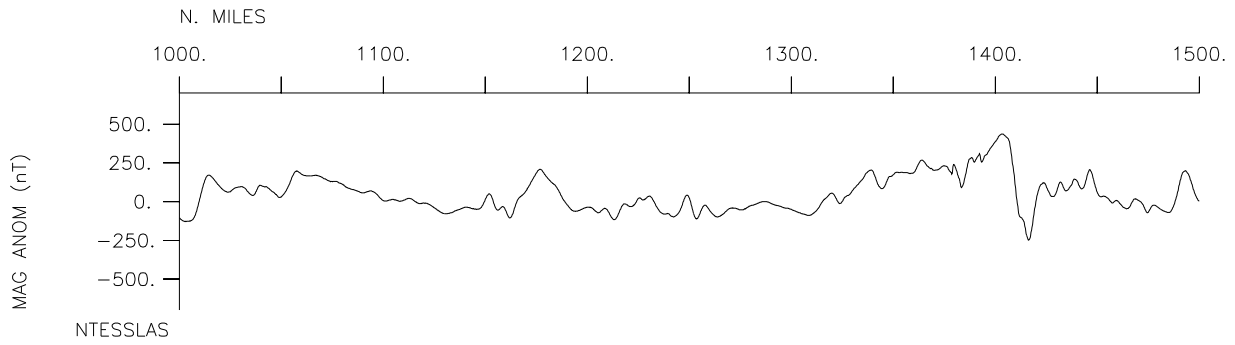
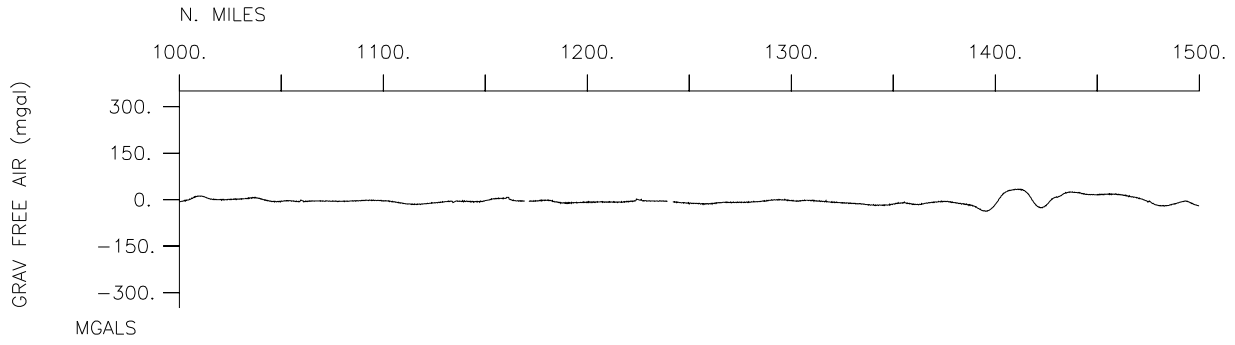
**Gravity-5321 miles**

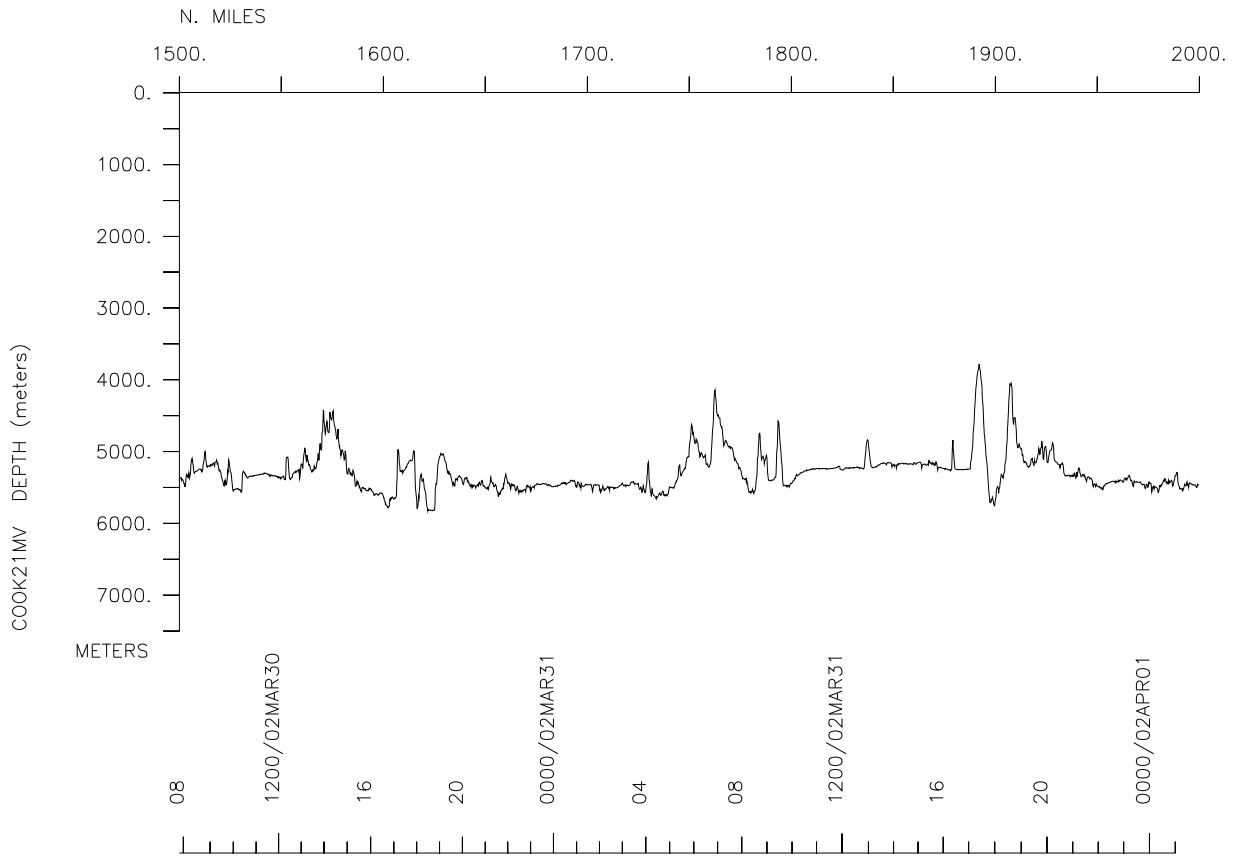
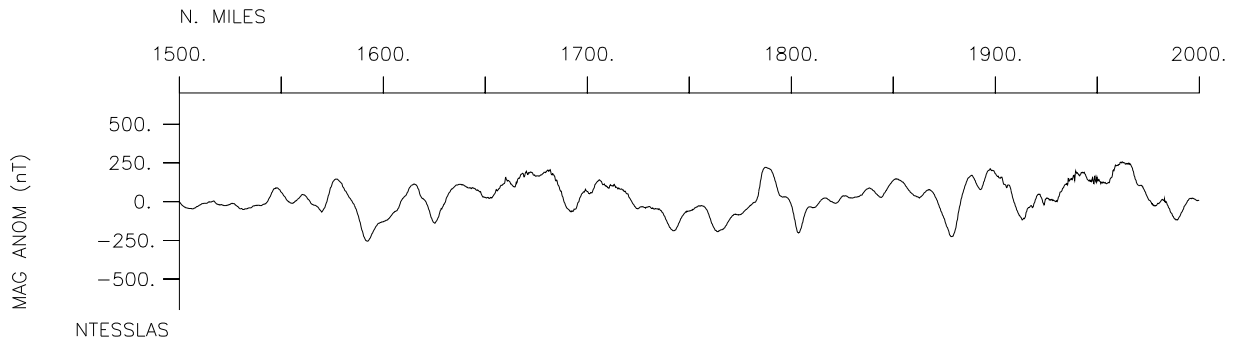
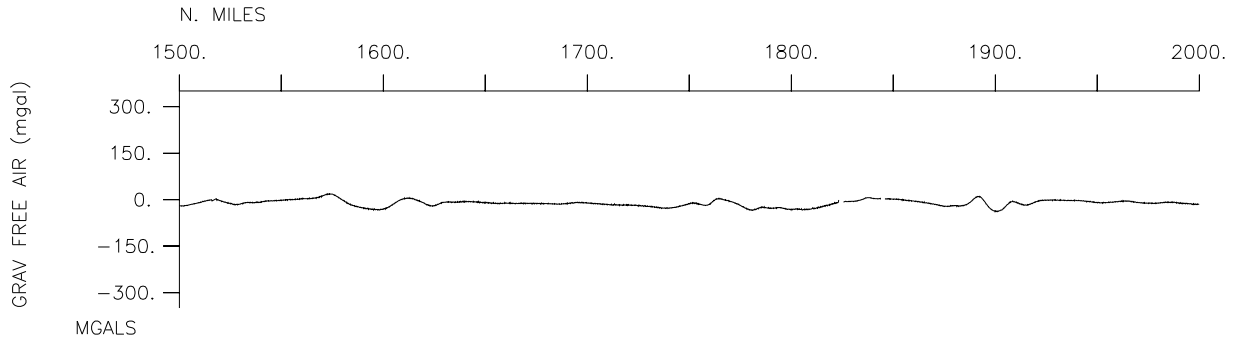
# COOK21MV



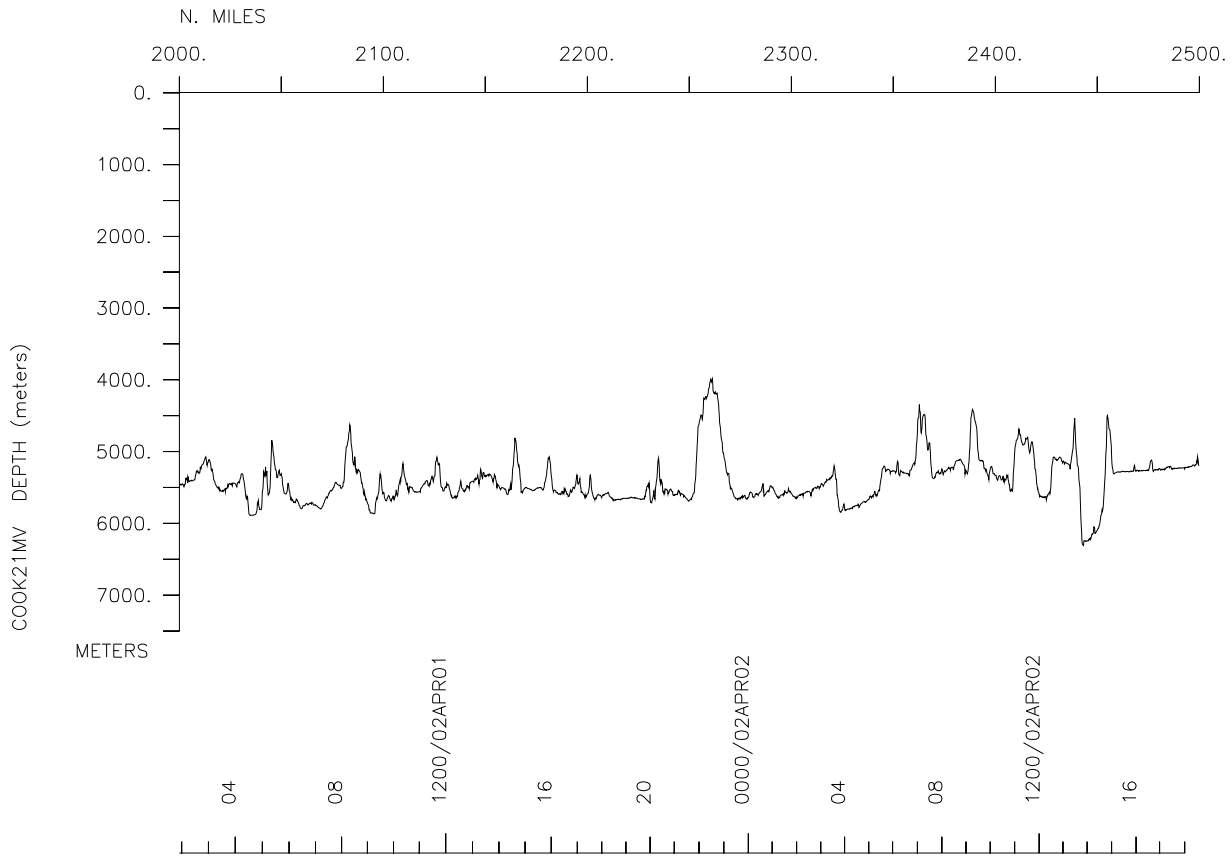
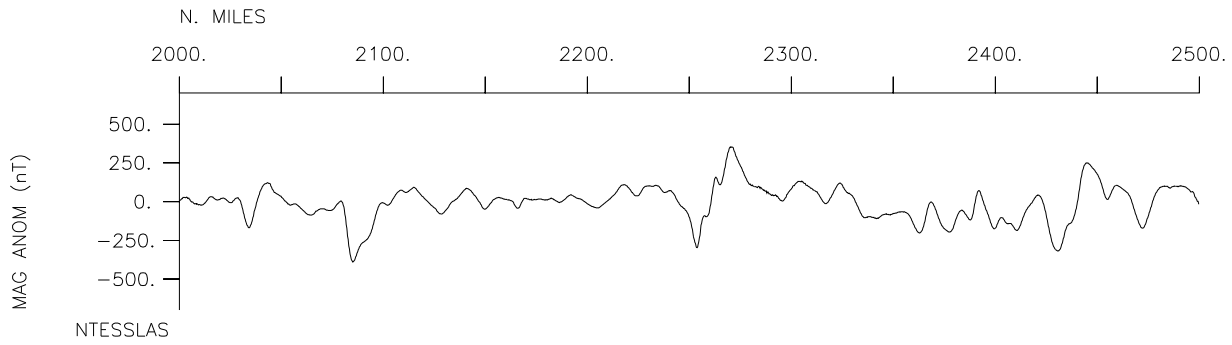
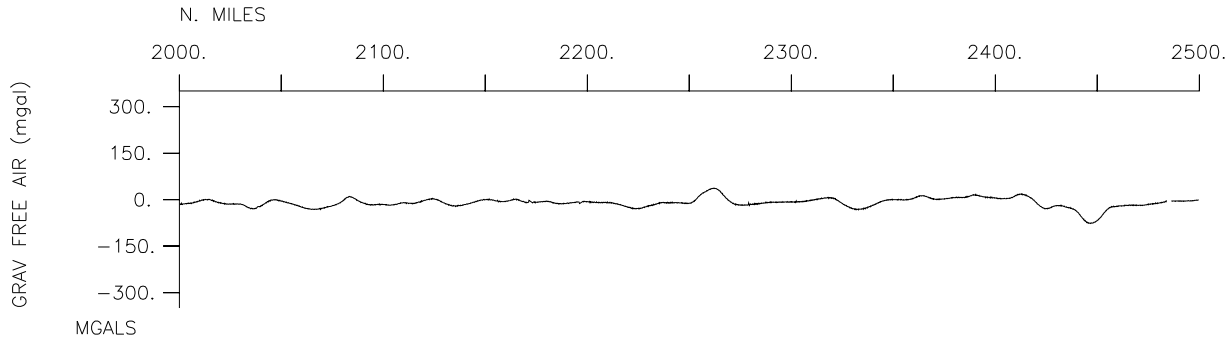


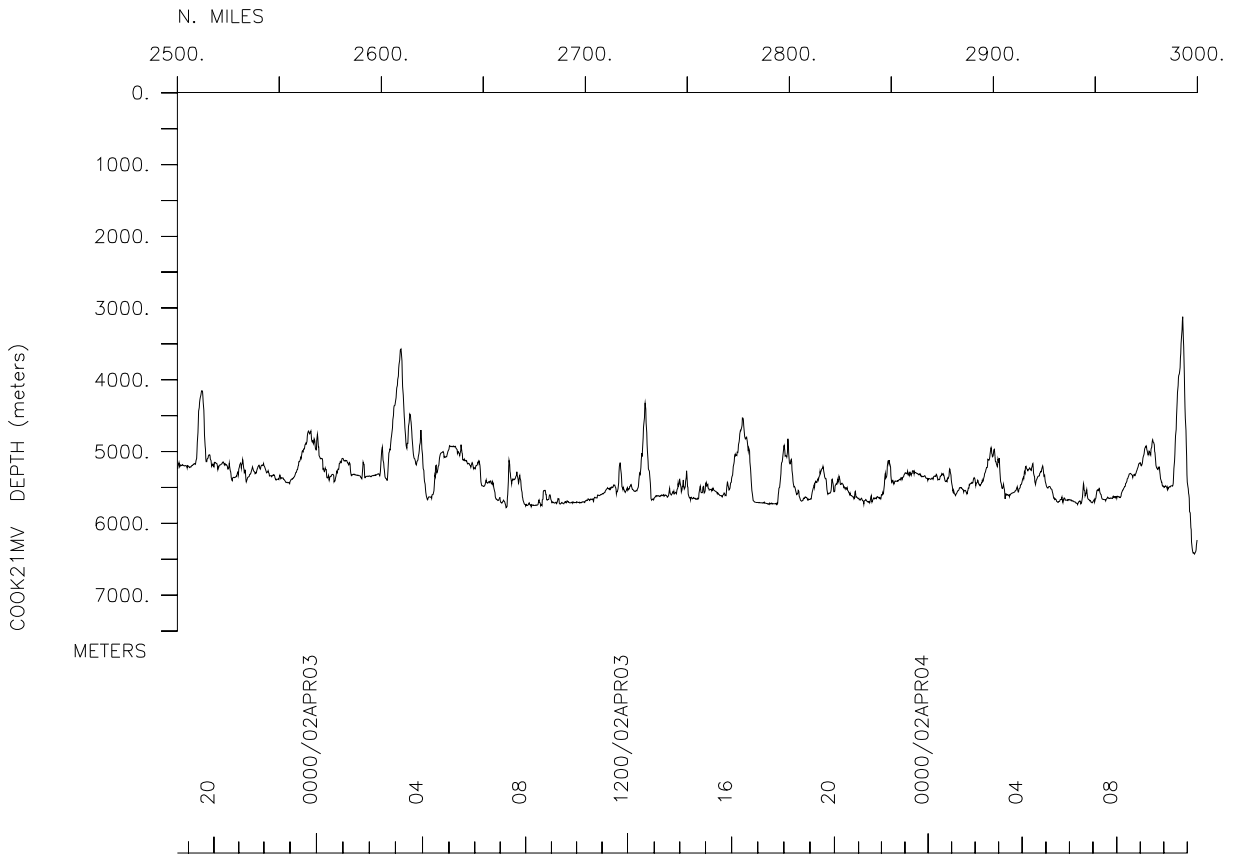
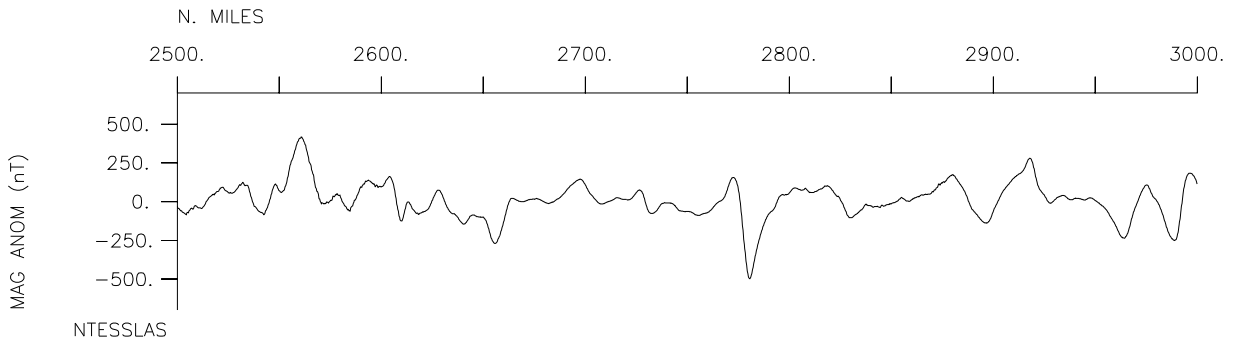
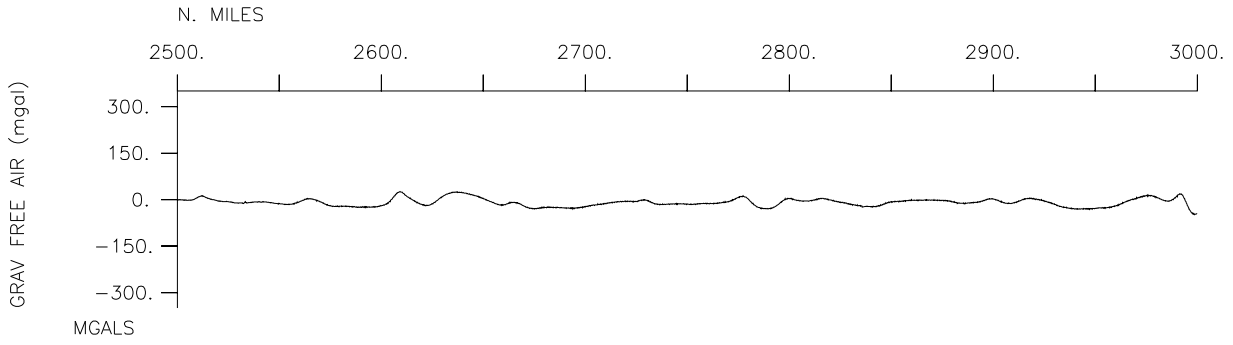


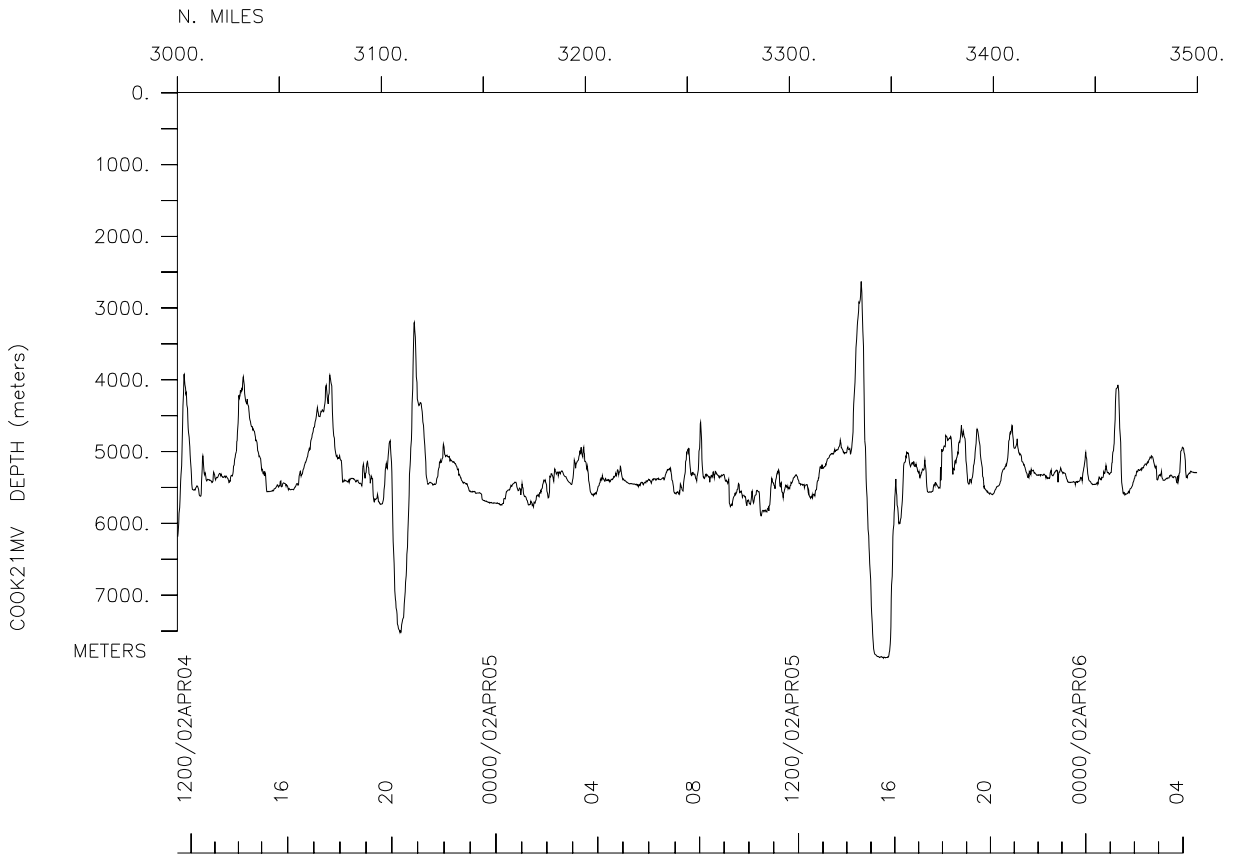
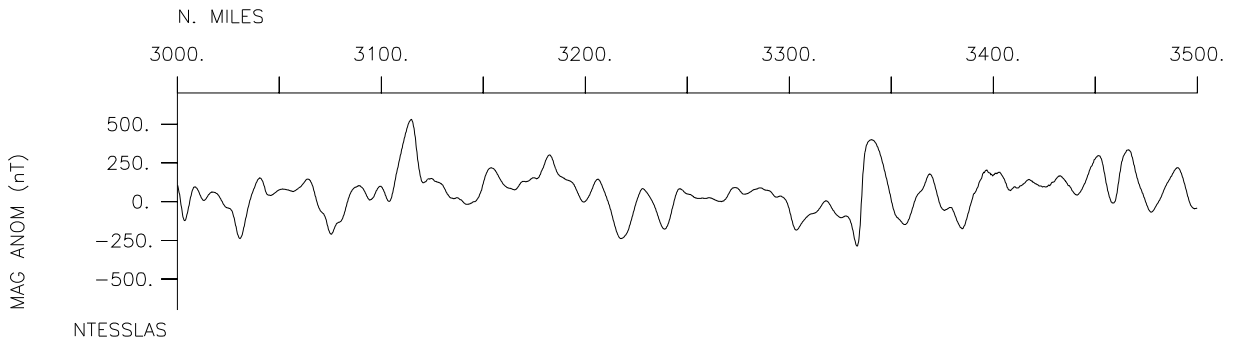
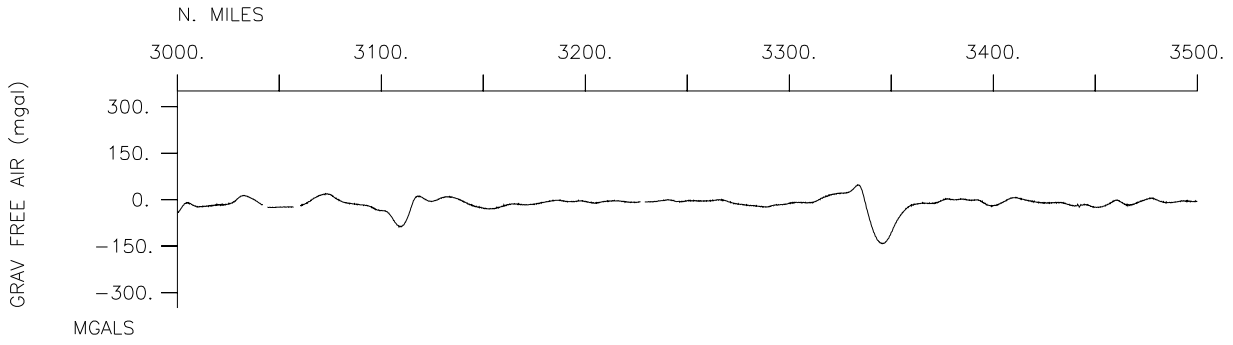


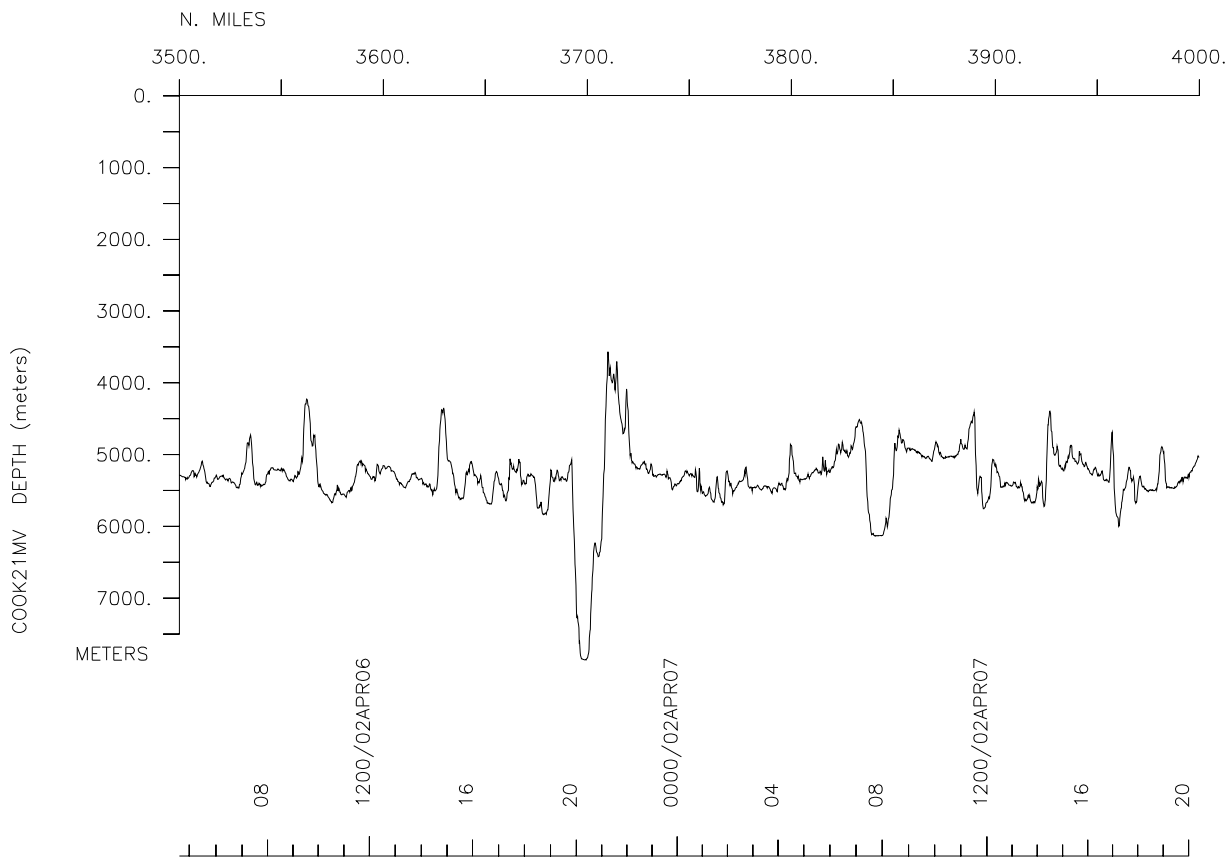
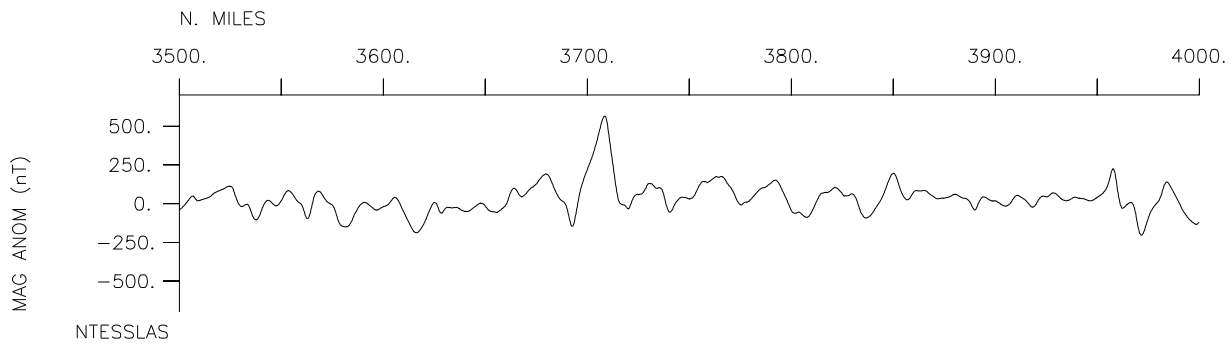
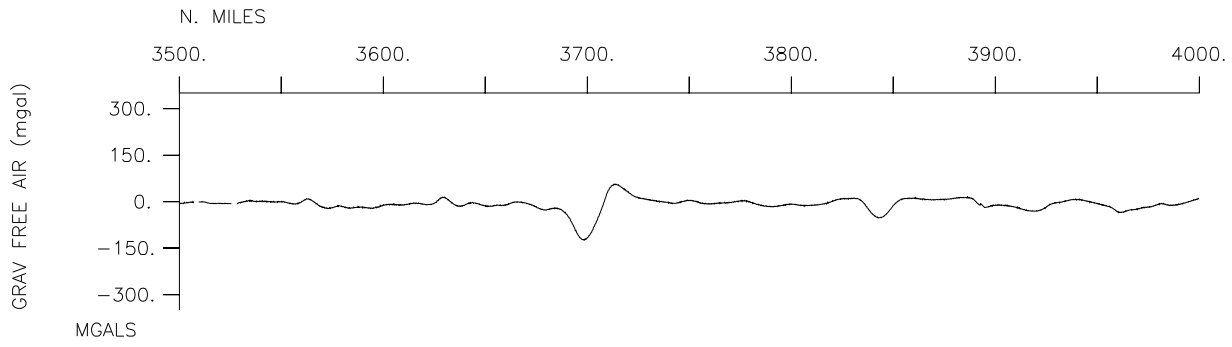


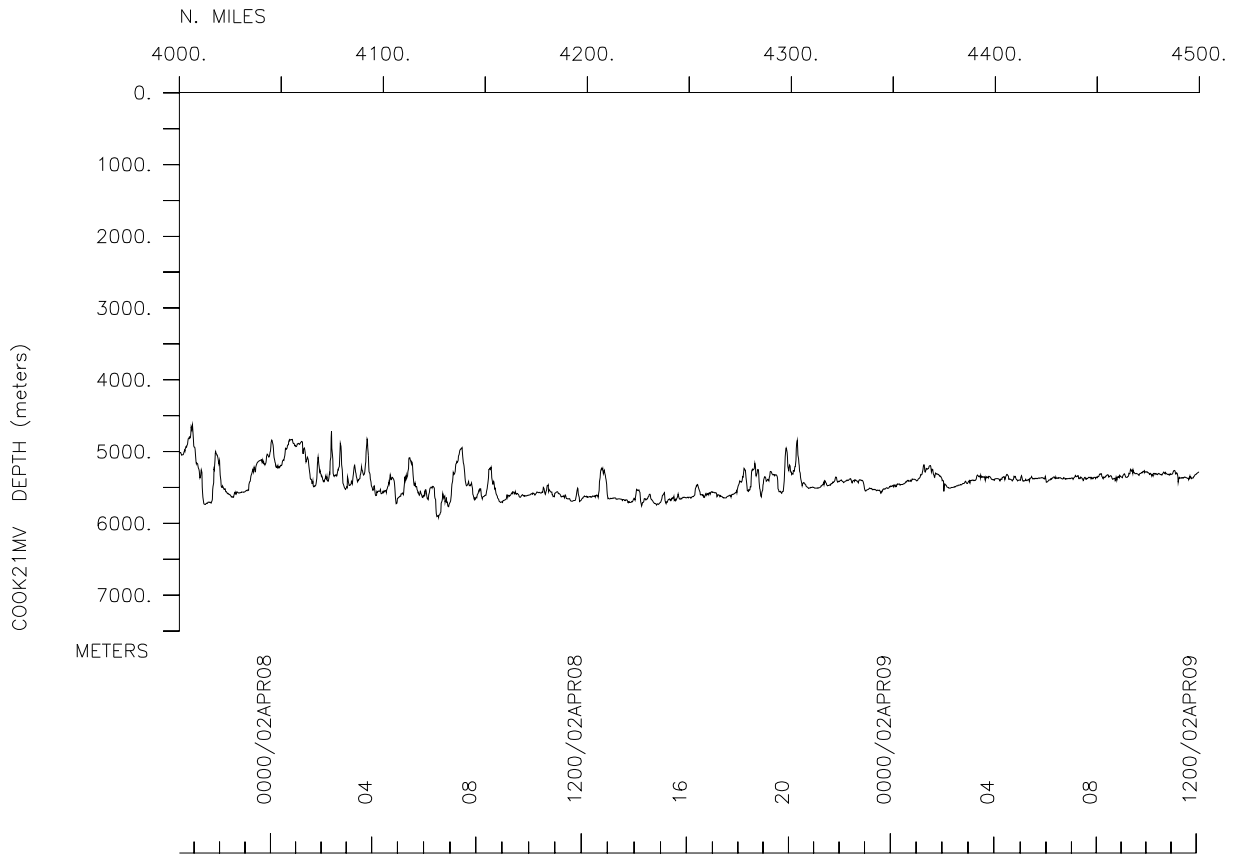
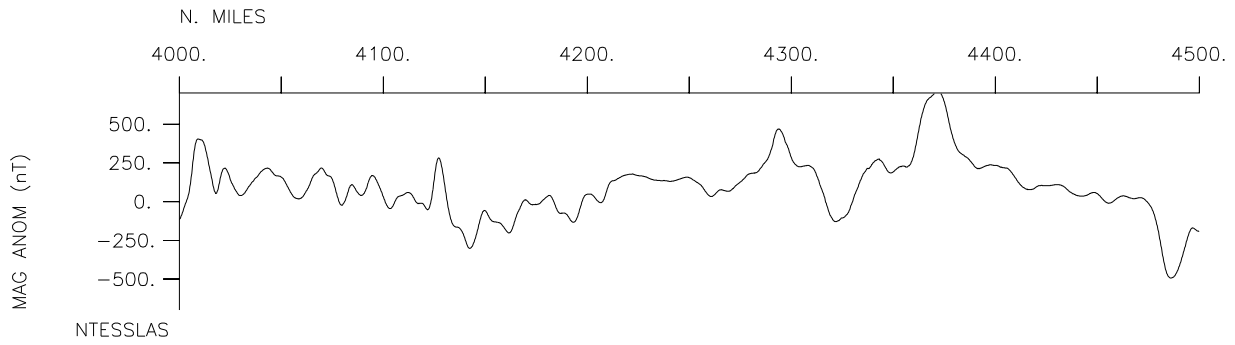
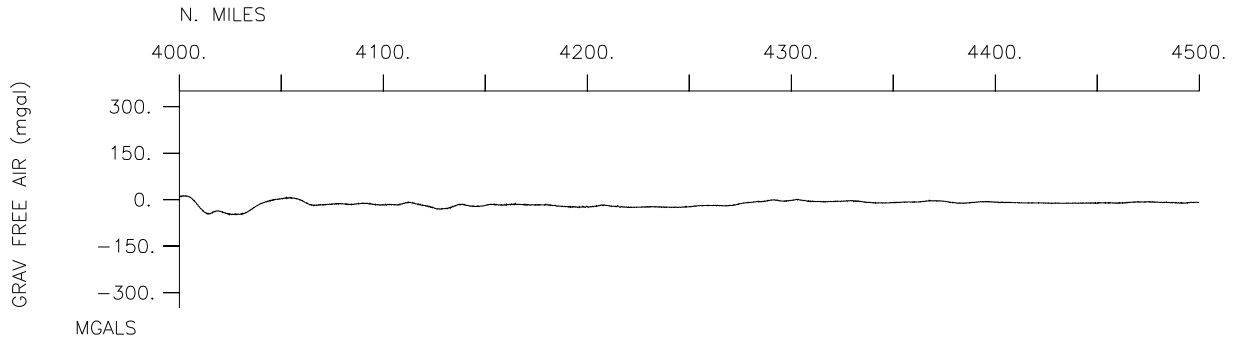


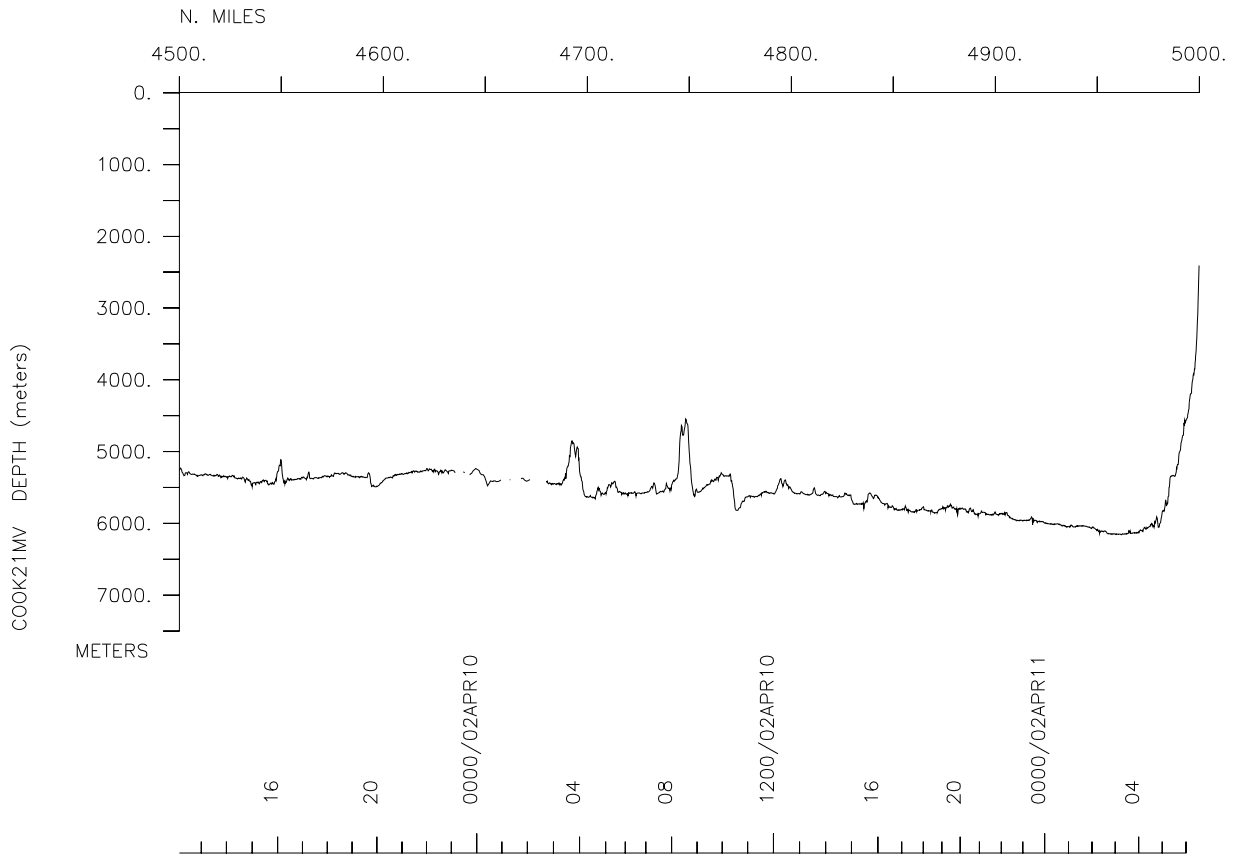
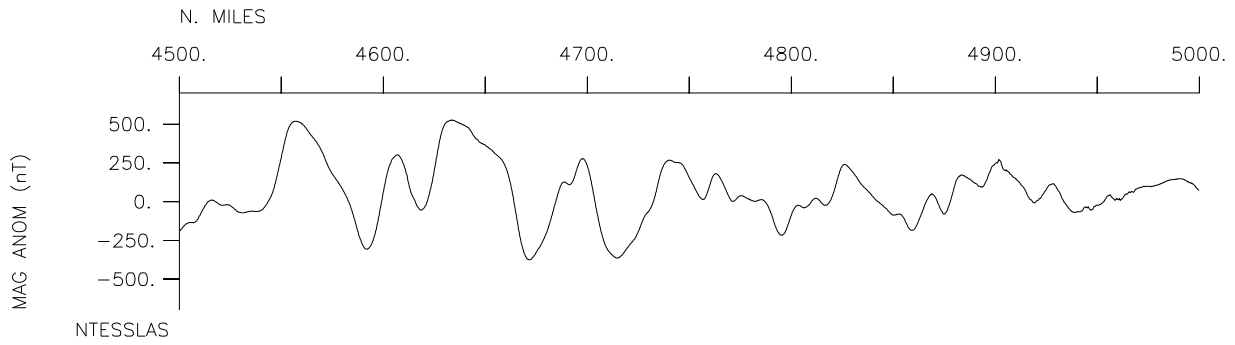
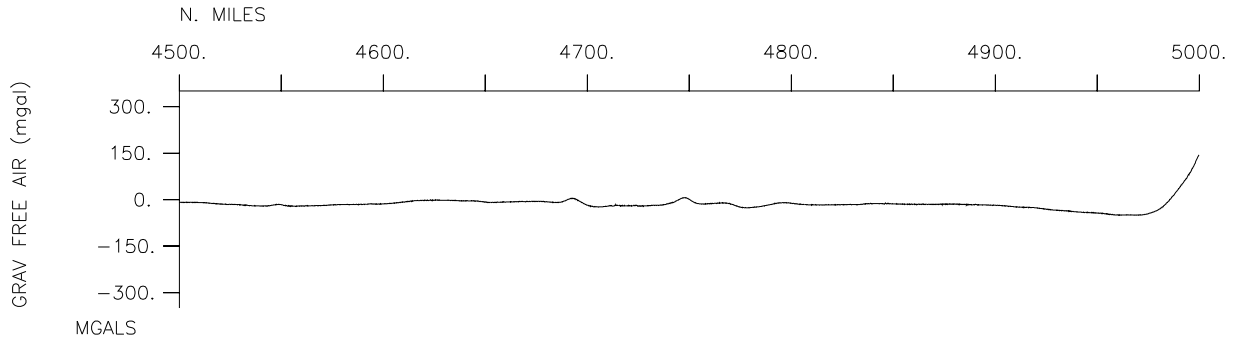


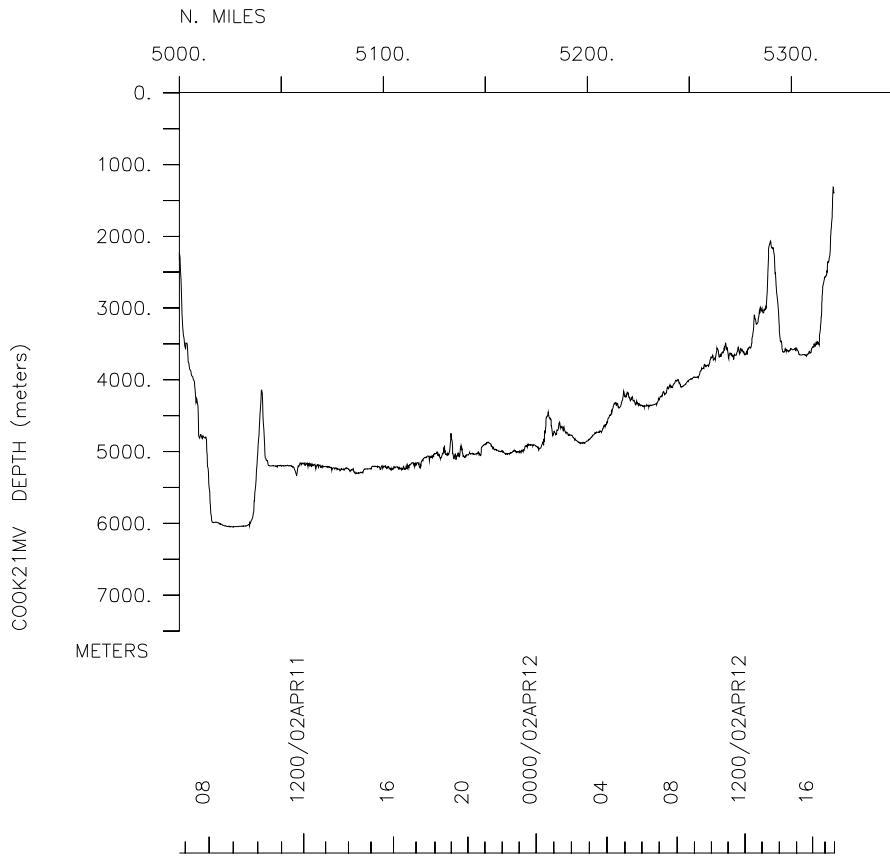
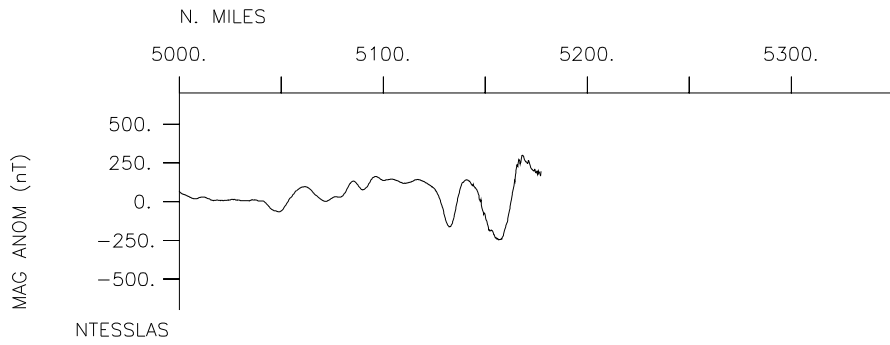
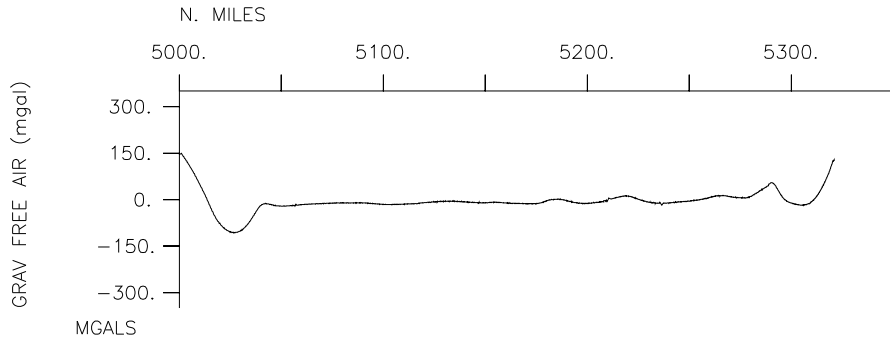












**S.I.O. Sample Index**

**COOK Expedition**

**Leg 21**

**(COOK21MV)**

R/V Melville

(Issued July 2002)

**PORTS:**

Apia, Samoa (24 March 2002)  
to  
Majuro, Marshall Islands (12 April 2002)

**Chief Scientist :** Roger Larson  
University of Rhode Island

*The Sample Index is a first level interdisciplinary listing of time, position, sample identification and disposition of all samples, records and measurements collected on this cruise leg. The index data are encoded at sea by the resident marine technician and processed on shore by the S.I.O. Shipboard Technical Support Group shortly after the completion of the cruise leg.*

*Positions are interpolated on the basis of sample time by comparison to a single, edited navigation file. Samples beginning at one time and position and ending at another are entered on two consecutive lines. Disposition and sample type are represented by three and four character codes to permit future computer searches on these parameters. (Listings defining these codes are available from the Shipboard Technical Support Group.)*

GDC Cruise ID# 295



#### Ports \*\*\*

0256	250302	0	LGPT B	Apia, Samoa	13-49.53S	171-45.82W	g	COOK21MV
1803	120402	0	LGPT E	Majuro, Marshall Is.	7-12.95N	171-09.67E	g	COOK21MV

#### Personnel \*\*\*

#	*****NAME*****	*****TITLE*****	*****AFFILIATION*****	**CRID**
PECS URI	Larson, R.	Chief Scientist	U. of Rhode Island	COOK21MV
PESP URI	Pockainy, R.	Scientist	U. of Rhode Island	COOK21MV
PESP SIX	Lewis, A.	Scientist	U.of North Carolina	COOK21MV
PEST URI	Viso, R.	Grad student	U. of Rhode Island	COOK21MV
PEST JPN	Miura, R.	Grad student	Tokyo University	COOK21MV
PEST URI	Vinhateiro, N.	Student	U. of Rhode Island	COOK21MV
PESP SIX	Binataake, I.	Observer	Kiribati	COOK21MV
PECT SCG	Chatwood, J.	Computer tech	Scripps Institution	COOK21MV

#### NOTES \*\*\*

#An 'X' in the (B)egin/(E)nd column following the sample code indicates no  
#sample or data recovered. A 'C' indicates continuation of data collection  
#from before the beginning or after the end of a particular leg, (moored  
#bottom instruments, for example.) The number appearing in the columns  
#between the sample identifier and the disposition code, for many sample  
#entries, is the water depth in corrected meters.

#GMT	DDMMYY	SAMP	B	SAMPLE	DISP			p	CRUISE
#TIME	DATE	TZ	CODE	E IDENTIFIER	CODE	LATITUDE	LONGITUDE	c	LEG-SHIP
#-----	--	----	-	-----	----	-----	-----	-	-----

#### Underway Data Curator - Shipboard Technical Support Group ext.41899 \*\*\*  
#### Digital Data Curator - Geological Data Center, S.P. Miller, ext.41898 \*\*\*

#### MultiBeam Data (vertical beam and side scan) \*\*\*

0354	250302	0	MBSR B	Digital multibeam	GDC	13-44.21S	171-37.44W	g	COOK21MV
1747	120402	0	MBSR E	Digital multibeam	GDC	7-12.68N	171-09.39E	g	COOK21MV

#### Digital Magnetics (Earth Total Field) \*\*\*

0558	250302	0	MGDD B	Magnetics data	GDC	13-34.23S	171-14.12W	g	COOK21MV
0017	120402	0	MGDD E	Magnetics data	GDC	6-37.59N	173-21.92E	g	COOK21MV

#GMT	DDMMYY	SAMP	B	SAMPLE	DISP				p	CRUISE
#TIME	DATE	TZ	CODE	E IDENTIFIER	CODE	LATITUDE	LONGITUDE		c	LEG-SHIP
#-----	---	---	-	-----	-----	-----	-----	-----	-	-----

\*\*\* Digital Gravity \*\*\*

0251	250302	0	GVDD	B digital gravity data	GDC	13-49.61S	171-45.71W	g		COOK21MV
1758	120402	0	GVDD	E digital gravity data	GDC	7-12.89N	171-09.62E	g		COOK21MV

\*\*\* Integrated Meteorological Acquisition System \*\*\*

0256	250302	0	IMET	B weather measurements	GDC	13-49.53S	171-45.82W	g		COOK21MV
1803	120402	0	IMET	E weather measurements	GDC	7-12.95N	171-09.67E	g		COOK21MV

\*\*\* Acoustic Doppler Current Profiler \*\*\*

0256	250302	0	ADCP	B current measurements	GDC	13-49.53S	171-45.82W	g		COOK21MV
1803	120402	0	ADCP	E current measurements	GDC	7-12.95N	171-09.67E	g		COOK21MV

\*\*\* Expendable Bathythermographs \*\*\*

0447	250302	0	BTXP	MK21 # 1	T-5 GDC	13-39.97S	171-27.51W	g		COOK21MV
0442	260302	0	BTXP	MK21 # 2	T-5 GDC	11-46.07S	167-02.49W	g		COOK21MV
0521	270302	0	BTXP	MK21 # 3	T-5 GDC	8-42.40S	163-28.61W	g		COOK21MV
0502	280302	0	BTXP	MK21 # 4	T-5 GDC	5-59.02S	160-28.35W	g		COOK21MV
0508	280302	0	BTXP	MK21 # 5	T-5 GDC	5-58.02S	160-29.19W	g		COOK21MV
0314	290302	0	BTXP	MK21 # 6	T-5 GDC	2-31.34S	163-43.21W	g		COOK21MV
0438	300302	0	BTXP	MK21 # 7	T-5 GDC	4-13.52S	165-51.35W	g		COOK21MV
0511	310302	0	BTXP	MK21 # 8	T-5 GDC	0-38.56S	165-33.42W	g		COOK21MV
0505	040402	0	BTXP	MK21 # 12	T-5 GDC	2-05.42S	167-41.89W	g		COOK21MV
0452	050402	0	BTXP	MK21 # 13	T-5 GDC	2-46.89S	168-07.68W	g		COOK21MV
0540	060402	0	BTXP	MK21 # 14	T-5 GDC	1-35.00N	167-43.02W	g		COOK21MV
0549	070402	0	BTXP	MK21 # 15	T-5 GDC	3-10.72S	168-47.79W	g		COOK21MV
0611	080402	0	BTXP	MK21 # 16	T-5 GDC	1-17.62S	171-08.69W	g		COOK21MV
0625	090402	0	BTXP	MK21 # 17	T-5 GDC	1-28.80N	175-15.69W	g		COOK21MV
2014	100402	0	BTXP	MK21 # 18	T-5 GDC	4-36.77N	177-49.45E	g		COOK21MV
0643	110402	0	BTXP	MK21 # 19	T-5 GDC	5-24.29N	176-04.34E	g		COOK21MV
0610	120402	0	BTXP	MK21 # 20	T-5 GDC	6-58.61N	172-35.27E	g		COOK21MV

#				End Sample Index						COOK21MV
---	--	--	--	------------------	--	--	--	--	--	----------