

REPORT AND INDEX OF
UNDERWAY MARINE GEOPHYSICAL DATA

AVON EXPEDITION

LEG 5

(AVON05MV)

R/V Melville

(Issued June 1999)

Ports:

Apia, Western Samoa (15 April 1999)

to

Honolulu, Hawaii (23 April 1999)

Chief Scientist:

Diana Stram, University of Rhode Island
Principal Investigator - Roger Larson, URI
rlar@gsosun1.gso.uri.edu

Computer Technician - Ron Moe

Post-Cruise Processing and Report Preparation by the
Geological Data Center, Scripps Institution of Oceanography
La Jolla, California 92093-0223

NOTE: *This is an index of underway geophysical data edited and processed after the completion of the cruise leg and is intended primarily for informal use within the institution. This document is not to be reproduced or distributed outside Scripps without prior approval of the chief scientist or the Geological Data Center, Scripps Institution of Oceanography, La Jolla, California 92093-0223*

GDC Cruise I.D.# 284

**REPORT AND INDEX OF NAVIGATION
AND UNDERWAY GEOPHYSICAL DATA**

Processed by the Geological Data Center
Scripps Institution of Oceanography

Contents:

Index Chart - gives track of cruise leg, dates, ports, and mileage of each type of data collected.

Track Charts - annotated with dates and hour ticks.

Profiles - depth, magnetic and gravity free air anomaly vs. distance. (Sections of track with seismic reflection data have a wide black line along the bottom of the profile.)

Sample Index - list of begin/end times and positions of all underway records as well as samples and measurements from other disciplines collected on the leg.

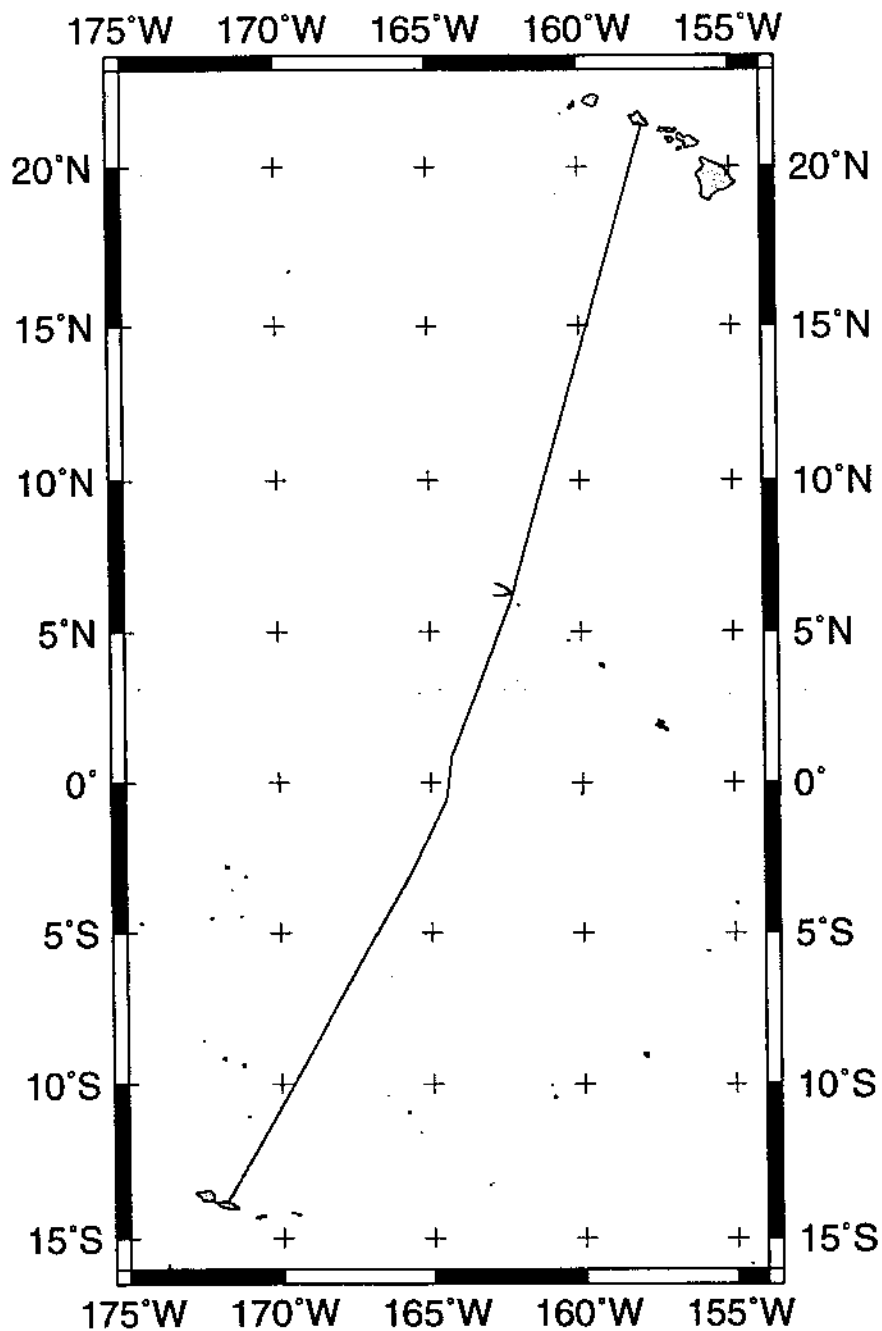
NOTE: One or more of the underway data types may not be collected on a given leg. For information on the availability and reproduction costs of data in the following forms, contact S.M. Smith, Curator, Geological Data Center, Scripps Institution of Oceanography, La Jolla, California 92093-0223. Phone: (619)534-2752, FAX: (619)534-6500, Internet email: ssmith@ucsd.edu

1. Files via ftp or on 8mm (Exabyte) and 4mm (DAT) magnetic tape:
 - a) Separate time series ASCII files of navigation, single beam depth, gravity and magnetics.
 - b) Above data in a single merged ASCII file in the MGD77 Exchange Format.
 - c) SeaBeam depth data (binary, Sun byte order)
 - d) SeaBeam Sidescan data.

2. Microfilm (35 mm flowfilm) or hard copies of:
 - a) Underway watch log book.
 - b) SeaBeam vertical beam profile/Sidescan records.
 - c) 3.5 kHz and 12 kHz echosounder records.
 - d) Seismic reflection profiler records.

3. Navigation listing with times and positions of fixes and course and speed changes.

4. Custom plots in Mercator projection:
 - a) Track plots.
 - b) SeaBeam depth contour plots.
 - c) Depth, magnetic or gravity values printed or profiled along track.



AVON EXPEDITION LEG 5 (AVON05MV)

CHIEF SCIENTIST: Diana Stram, University of Rhode Island

PORTS: Apia, Western Samoa - Honolulu, Hawaii

DATES: 15 - 23 April 1999

SHIP: R/V Melville

TOTAL MILEAGE OF UNDERWAY DATA COLLECTED

Cruise - 2278 miles

Magnetics - 2058 miles

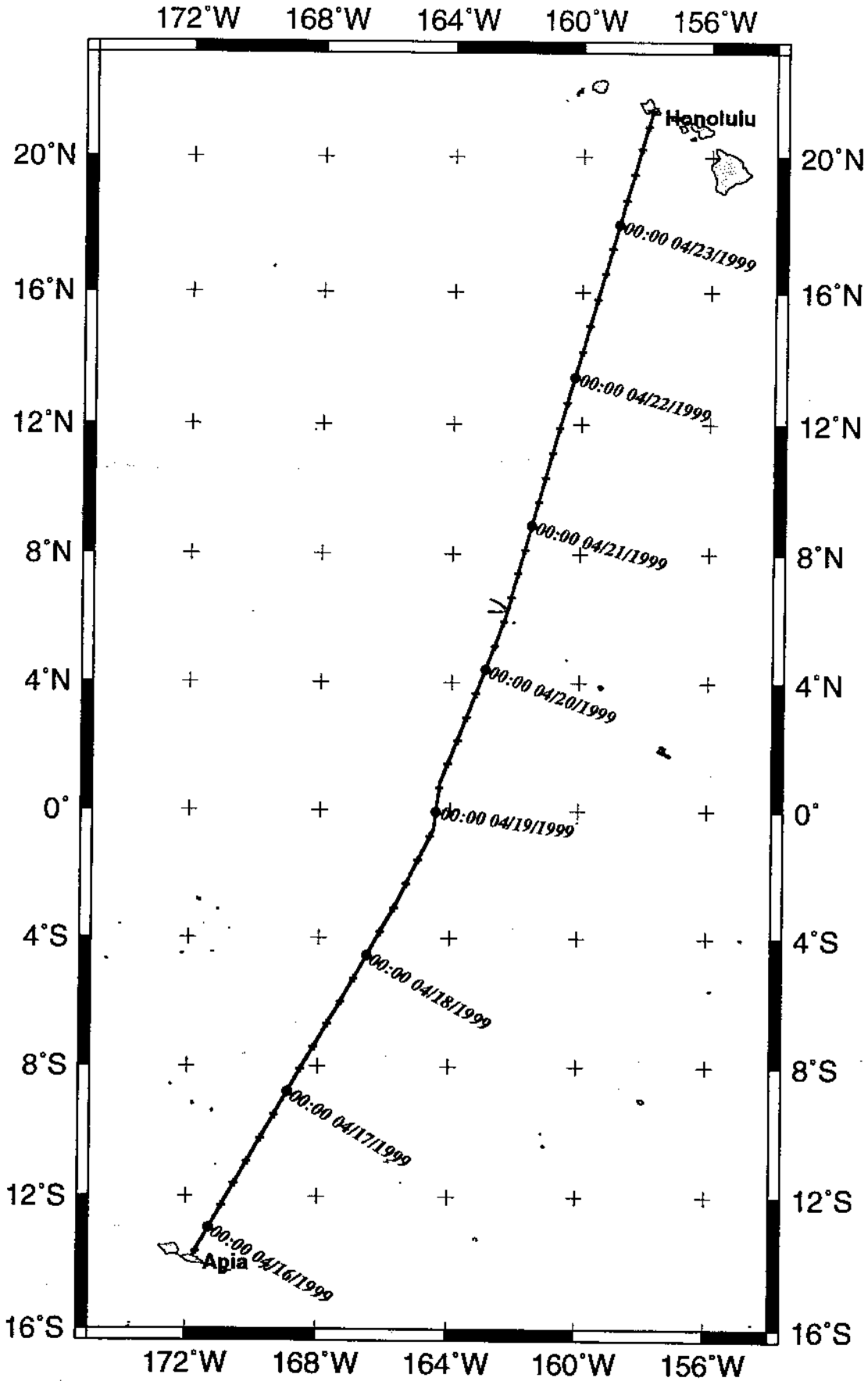
Bathymetry - 2230 miles

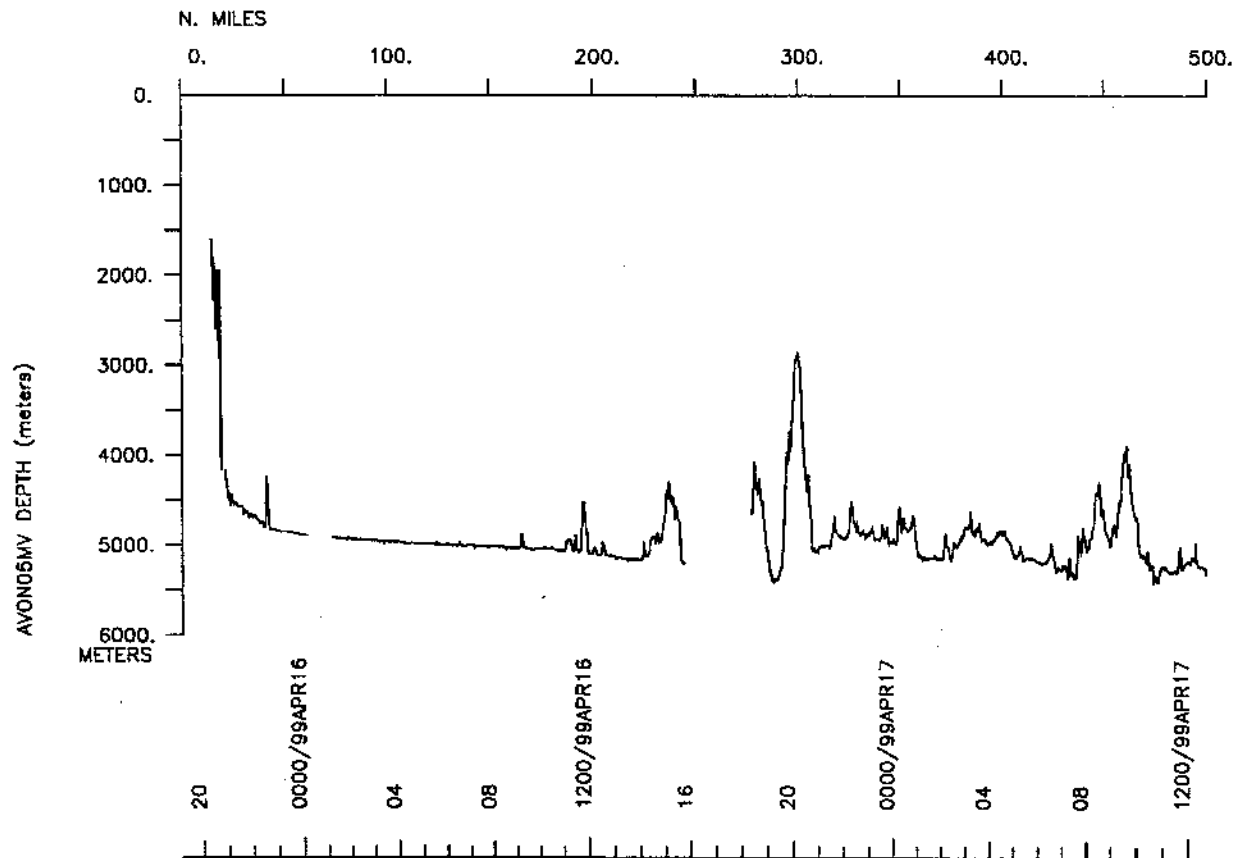
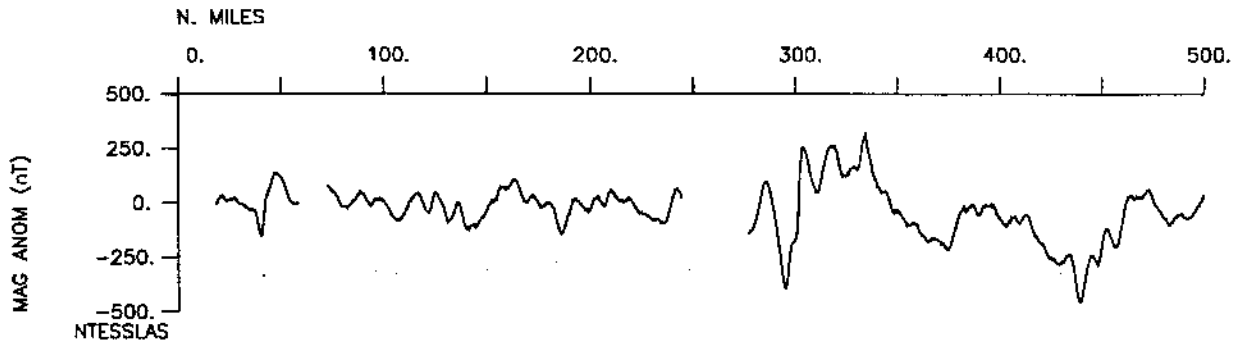
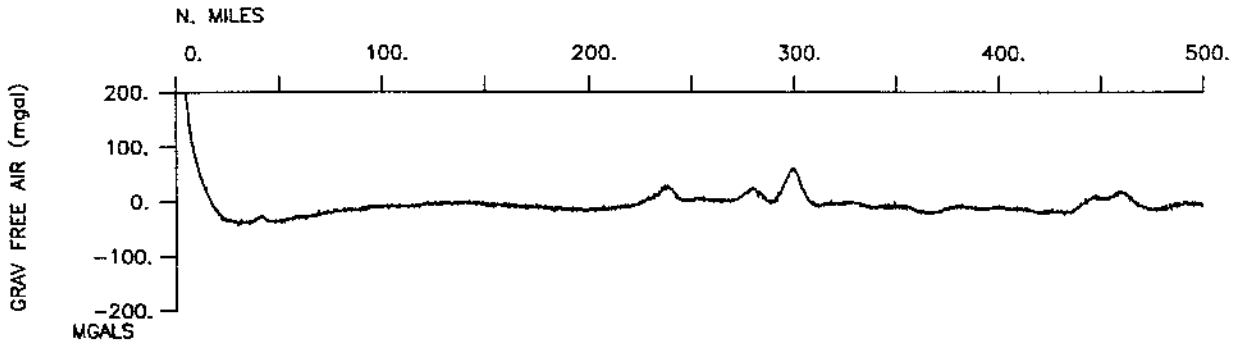
Seismic Reflection - none collected

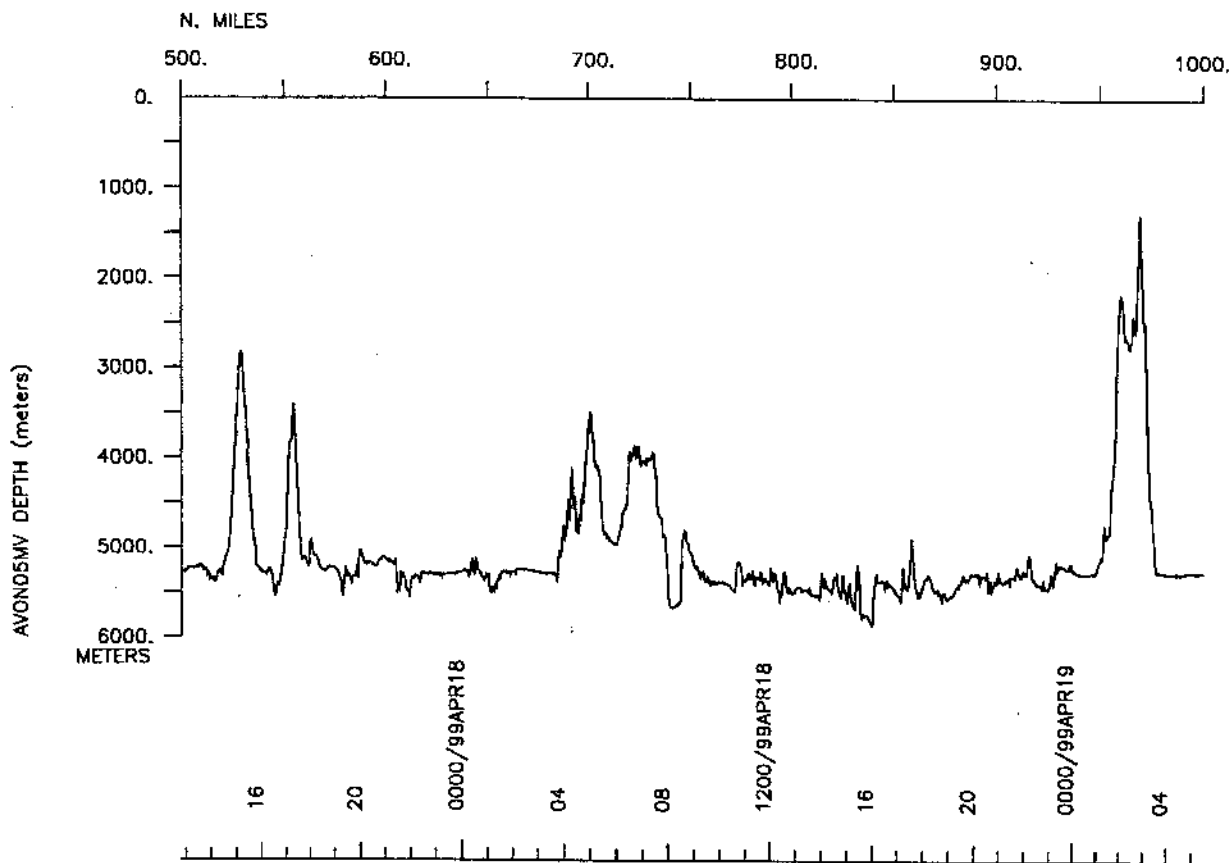
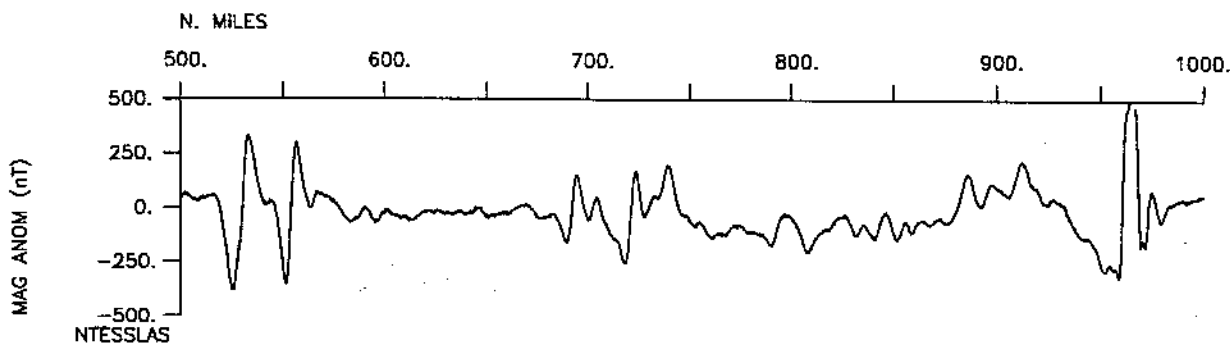
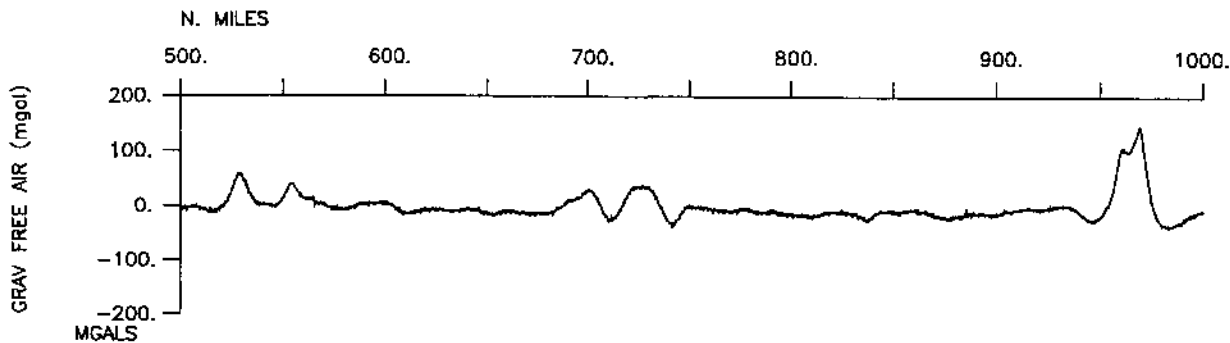
Sea Beam - 2230 miles

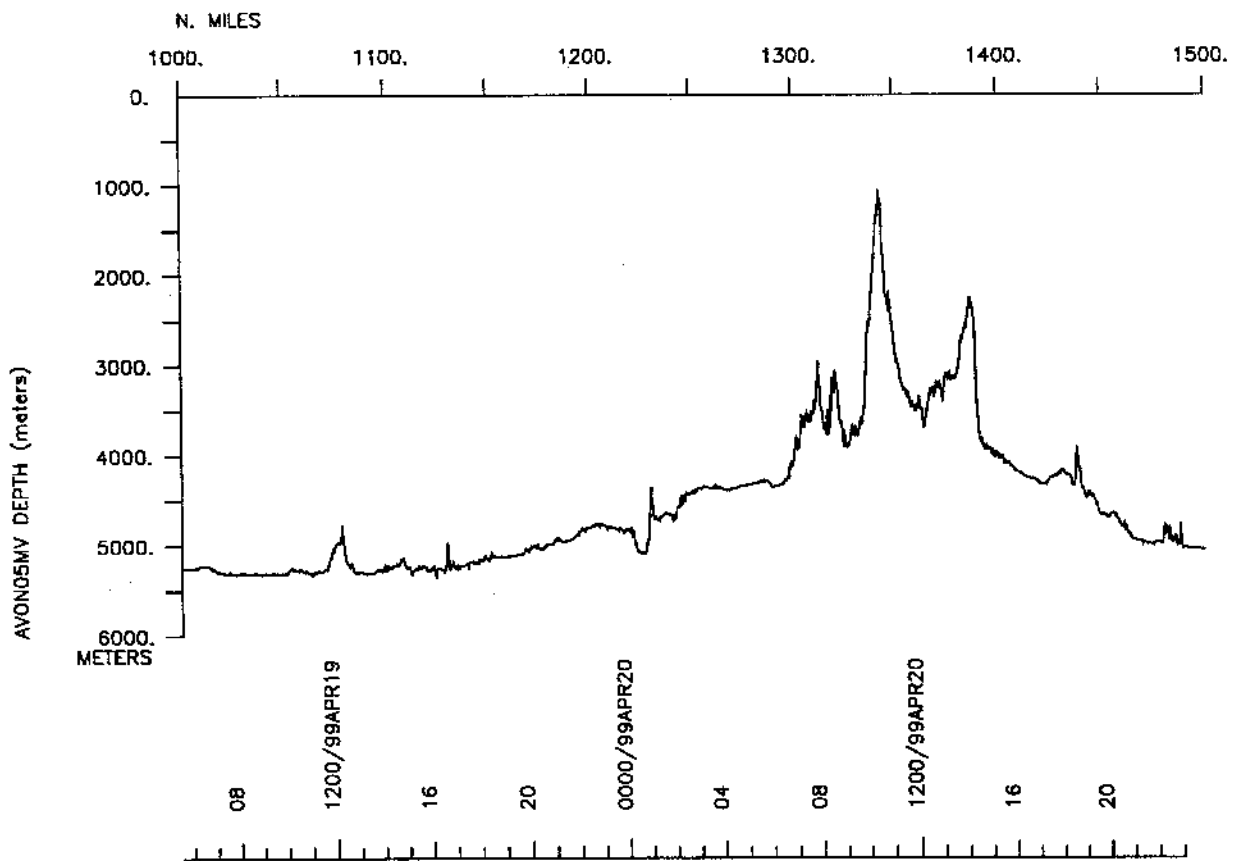
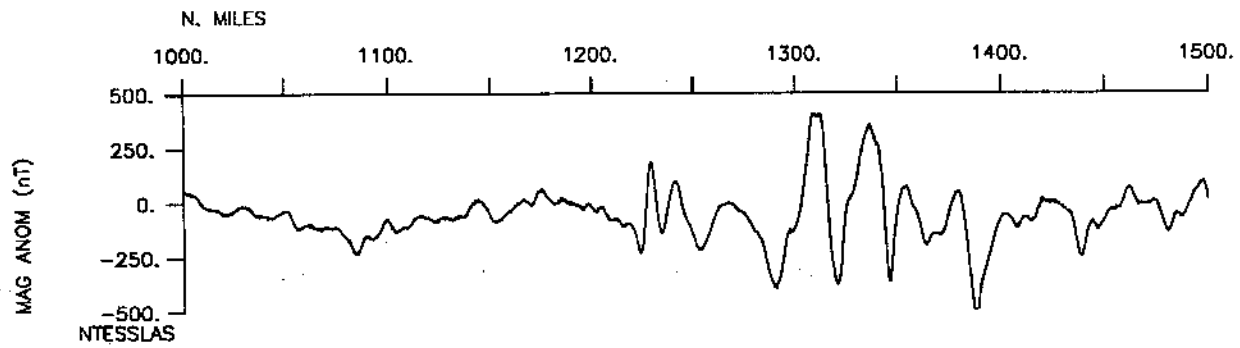
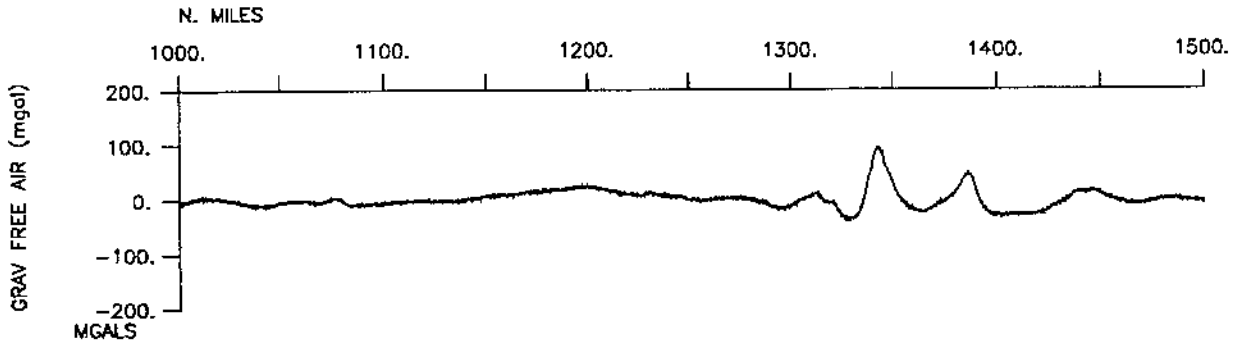
Gravity - 2278 collected

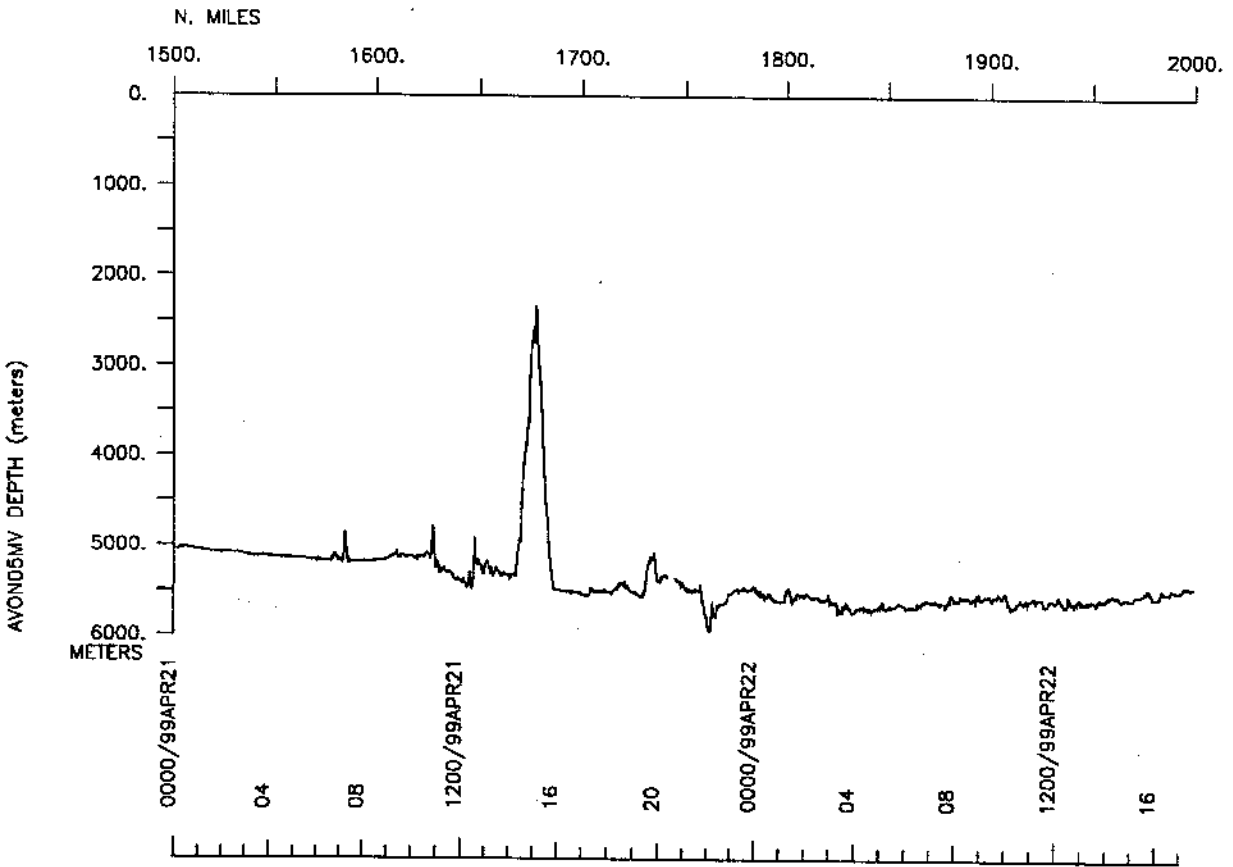
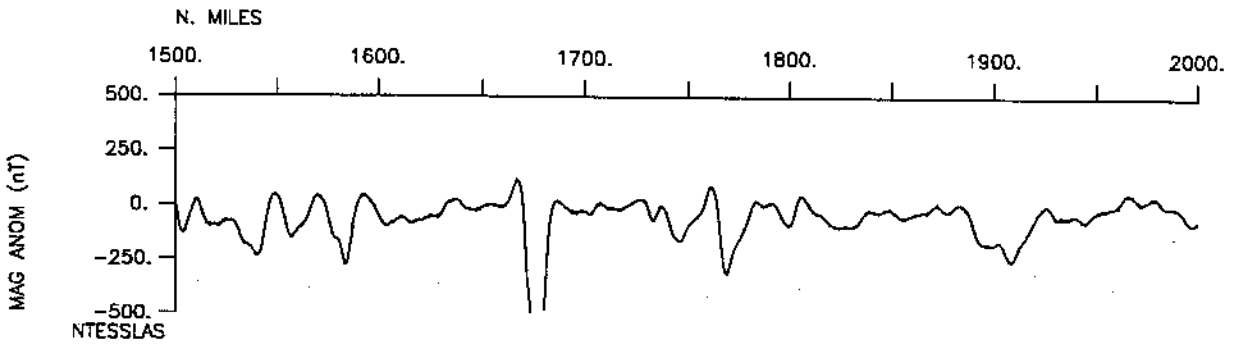
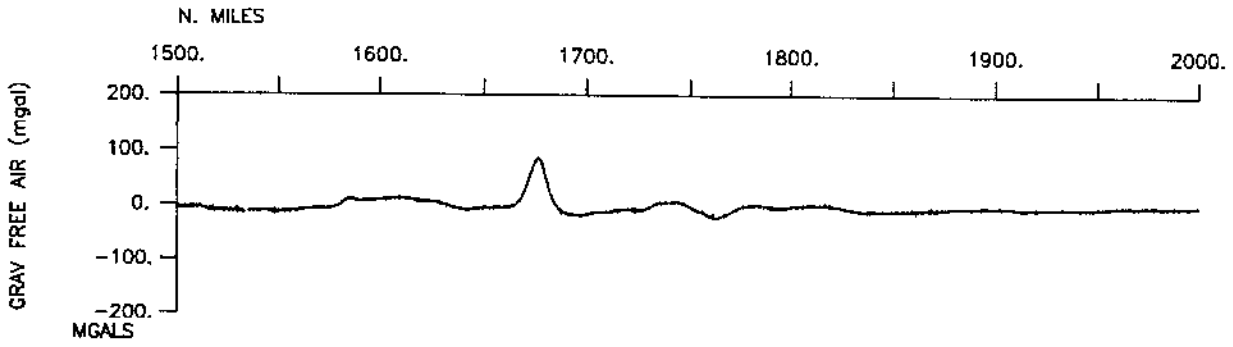
AVON05MV Track

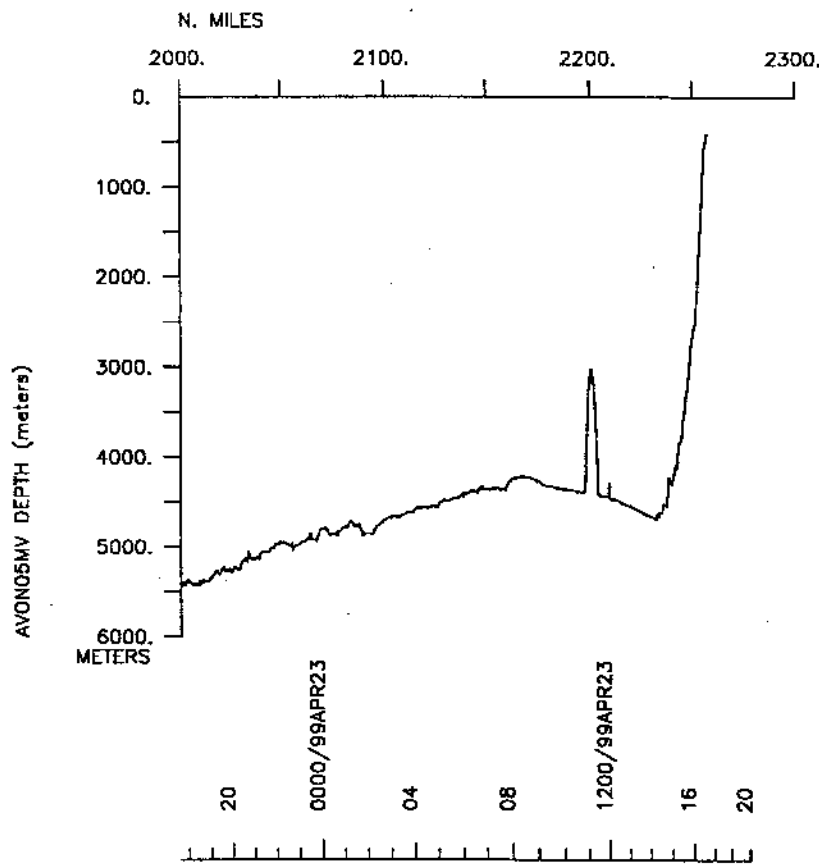
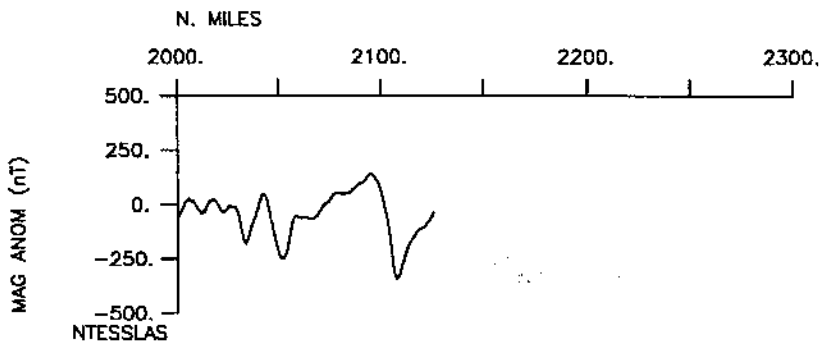
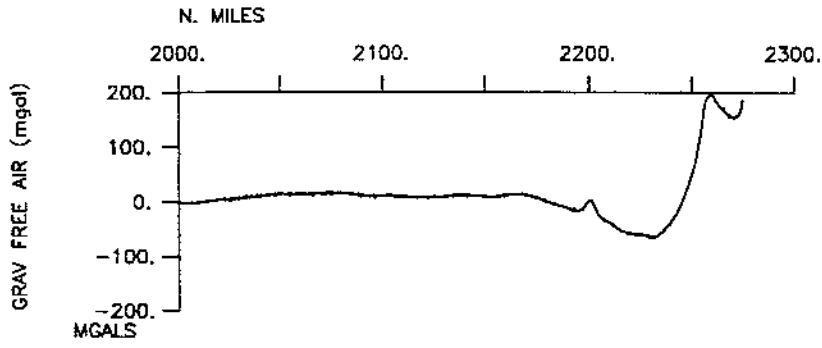












S.I.O. SAMPLE INDEX

AVON EXPEDITION

LEG 5

(AVON05MV)

R/V Melville

(Issued June 1999)

Ports:

Apia, Western Samoa (15 April 1999)

to

Honolulu, Hawaii (23 April 1999)

Chief Scientist:

Diana Stram, Univ. of Rhode Island

The Sample Index is a first level interdisciplinary listing of time, position, sample identification and disposition of all samples, records and measurements collected on this cruise leg. The index data are encoded at sea by the resident marine technician and processed on shore by the S.I.O. Geological Data Center shortly after the completion of the cruise leg.

Positions are interpolated on the basis of sample time by comparison to a single, edited navigation file. Samples beginning at one time and position and ending at another are entered on two consecutive lines. Disposition and sample type are represented by three and four character codes to permit future computer searches on these parameters. (Listings defining these codes are available from the Geological Data Center.)

GDC Cruise I.D.# 284

**** Ports ****

1815 150499 11 LGPT B Apia, Western Samoa 13-49.00S 171-46.00W f AVON05MV
 1930 230499 11 LGPT E Honolulu, Hawaii 21-18.00N 157-52.00W f AVON05MV

**** Personnel ****

#	*****NAME*****	*****TITLE*****	*****AFFILIATION*****	**CRID**
PECS URI	Stram, Diana	Chief Scientist	U. of Rhode Island	AVON05MV
PECT STS	Moe, Ron	Computer Tech.	Scripps Institution	AVON05MV
PEAT STS	Mogk, Seth	Air Gun Tech.	Scripps Institution	AVON05MV

**** NOTES ****

#An 'X' in the (B)egin/(E)nd column following the sample code indicates no
 #sample or data recovered. A 'C' indicates continuation of data collection
 #from before the beginning or after the end of a particular leg. (Moored
 #bottom instruments, for example.) The number appearing in the columns
 #between the sample identifier and the disposition code, for many sample
 #entries, is the water depth in corrected meters.

#GMT DDMYY	SAMP B	SAMPLE	DISP		p	CRUISE		
#TIME DATE	TZ	CODE E	IDENTIFIER	CODE	LATITUDE	LONGITUDE	c	LEG-SHIP

**** Underway Data Curator - S.M. Smith/Geological Data Center ext. 42752 ****

**** Log Books ****

1930 150499 0 LBUW B Underway watch Log GDC 13-45.20S 171-44.02W g AVON05MV
 1930 210499 0 LBUW E Underway watch log GDC 12-33.09N 160-27.93W g AVON05MV

**** Sea Beam Records (vertical beam and side scan) ****

2050 150499 0 MBSR B v.beam&sidescan r-01 GDC 13-31.11S 171-35.65W g AVON05MV
 0035 220499 0 MBSR E v.beam&sidescan r-01 GDC 13-31.67N 160-10.92W g AVON05MV
 0050 220499 0 MBSR B v.beam&sidescan r-02 GDC 13-34.60N 160-10.07W g AVON05MV
 1639 230499 0 MBSR E v.beam&sidescan r-02 GDC 20-59.83N 157-57.71W g AVON05MV

**** Digital Magnetics (Earth Total Field) ****

2038 150499 0 MGDR B Digital Magnetics GDC 13-33.27S 171-36.81W g AVON05MV
 0454 210499 0 MGDR E Digital Magnetics GDC 9-46.98N 161-16.04W g AVON05MV

**** Digital Gravity ****

1930 150499 0 GVDR B Digital Gravity GDC 13-45.20S 171-44.02W g AVON05MV
 1639 210599 0 GVDR E Digital Gravity GDC 21-18.96N 157-53.17W g AVON05MV

***** End Sample Index AVON05MV