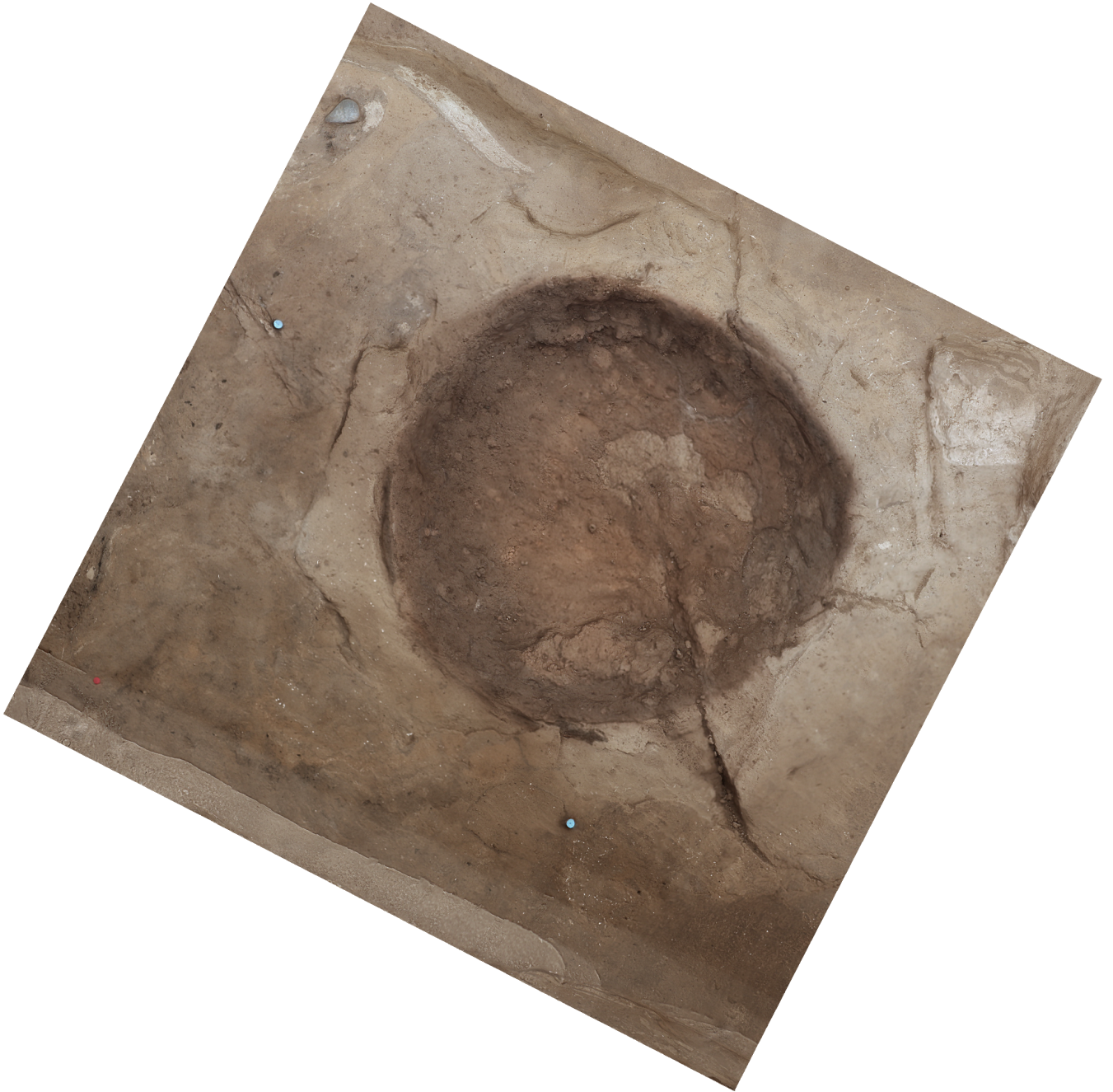


Agisoft PhotoScan

Processing Report
01 November 2014



Survey Data

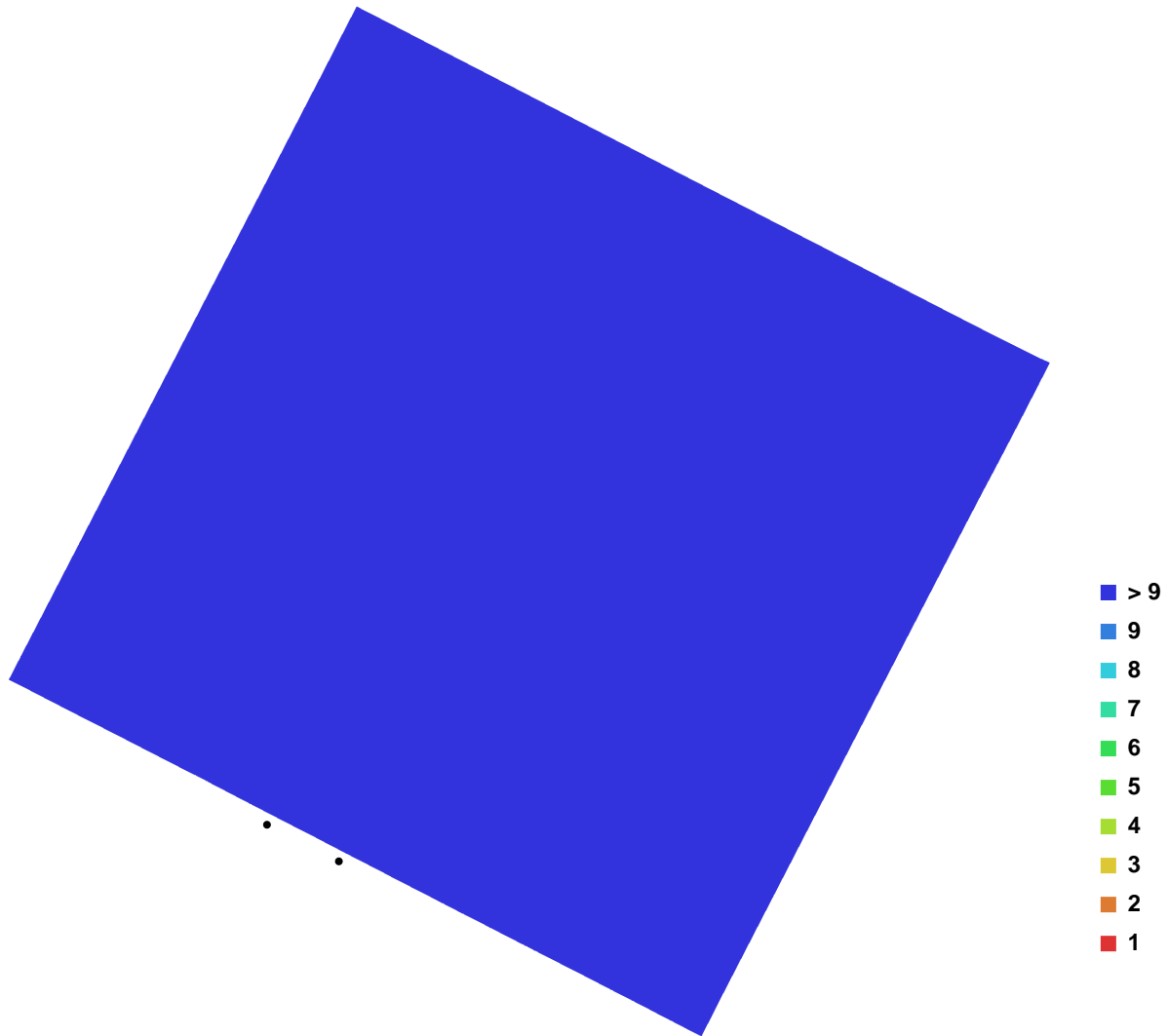


Fig. 1. Camera locations and image overlap.

Number of images:	14	Camera stations:	14
Flying altitude:	2.12858 m	Tie-points:	55645
Ground resolution:	0.000423056 m/pix	Projections:	137078
Coverage area:	1.3513e-006 sq km	Error:	0.706408 pix

Camera Model	Resolution	Focal Length	Pixel Size	Precalibrated
Canon EOS M (19 mm)	5184 x 3456	19 mm	4.384 x 4.384 um	No

Table. 1. Cameras.

Digital Elevation Model

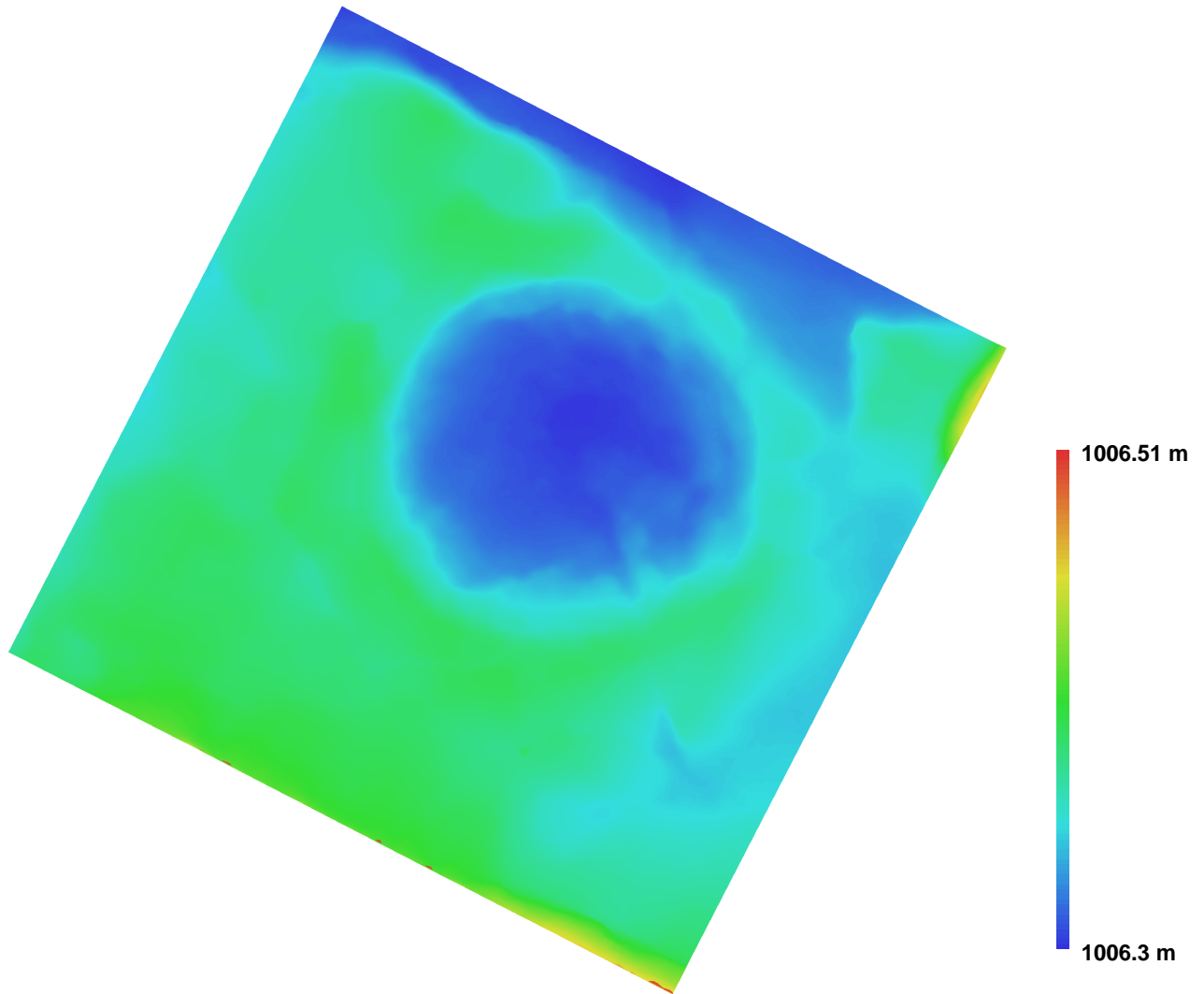


Fig. 2. Reconstructed digital elevation model.

Resolution: 0.00169223 m/pix
Point density: 349207 points per sq m