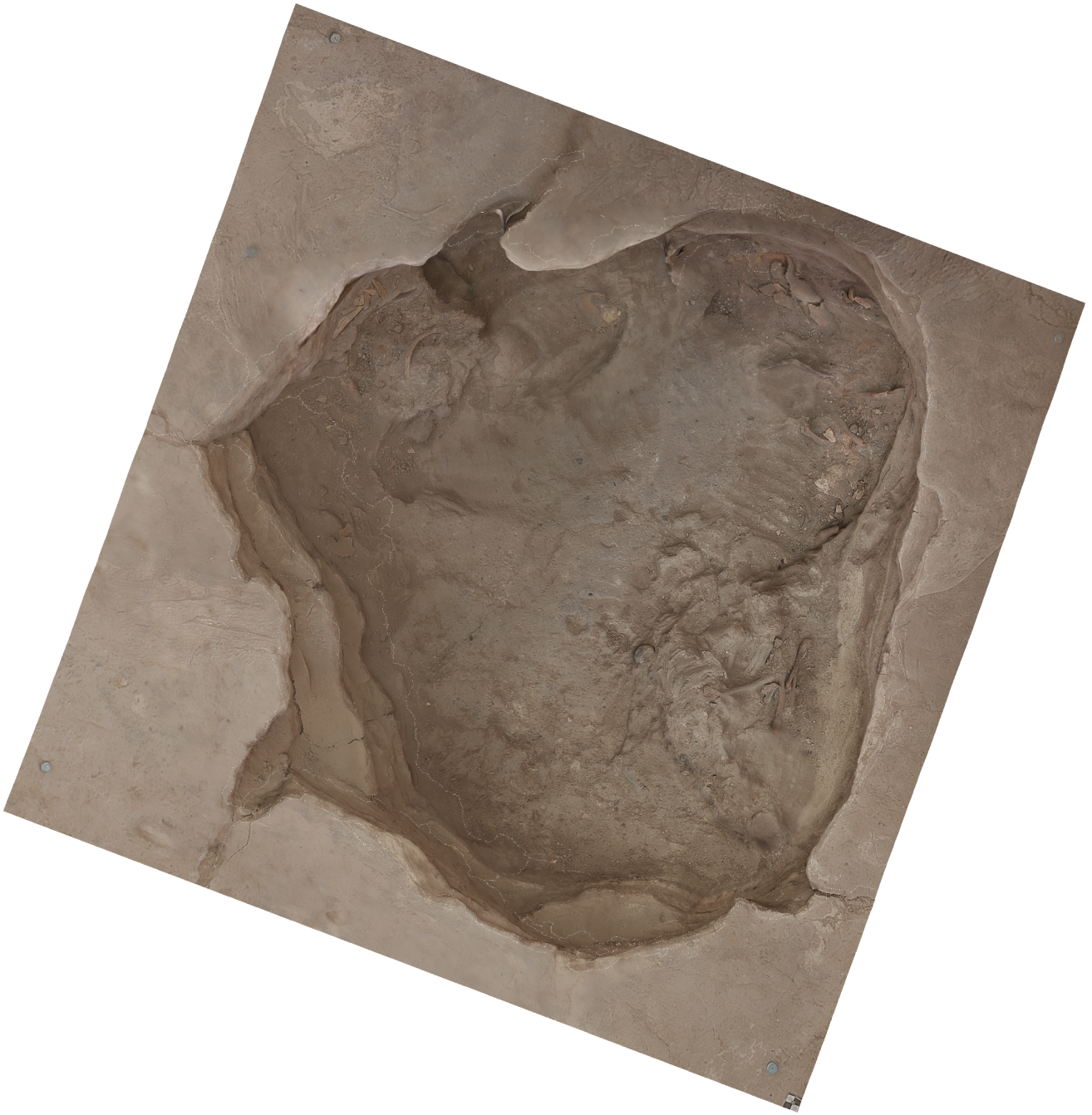


Agisoft PhotoScan

Processing Report
01 November 2014



Survey Data

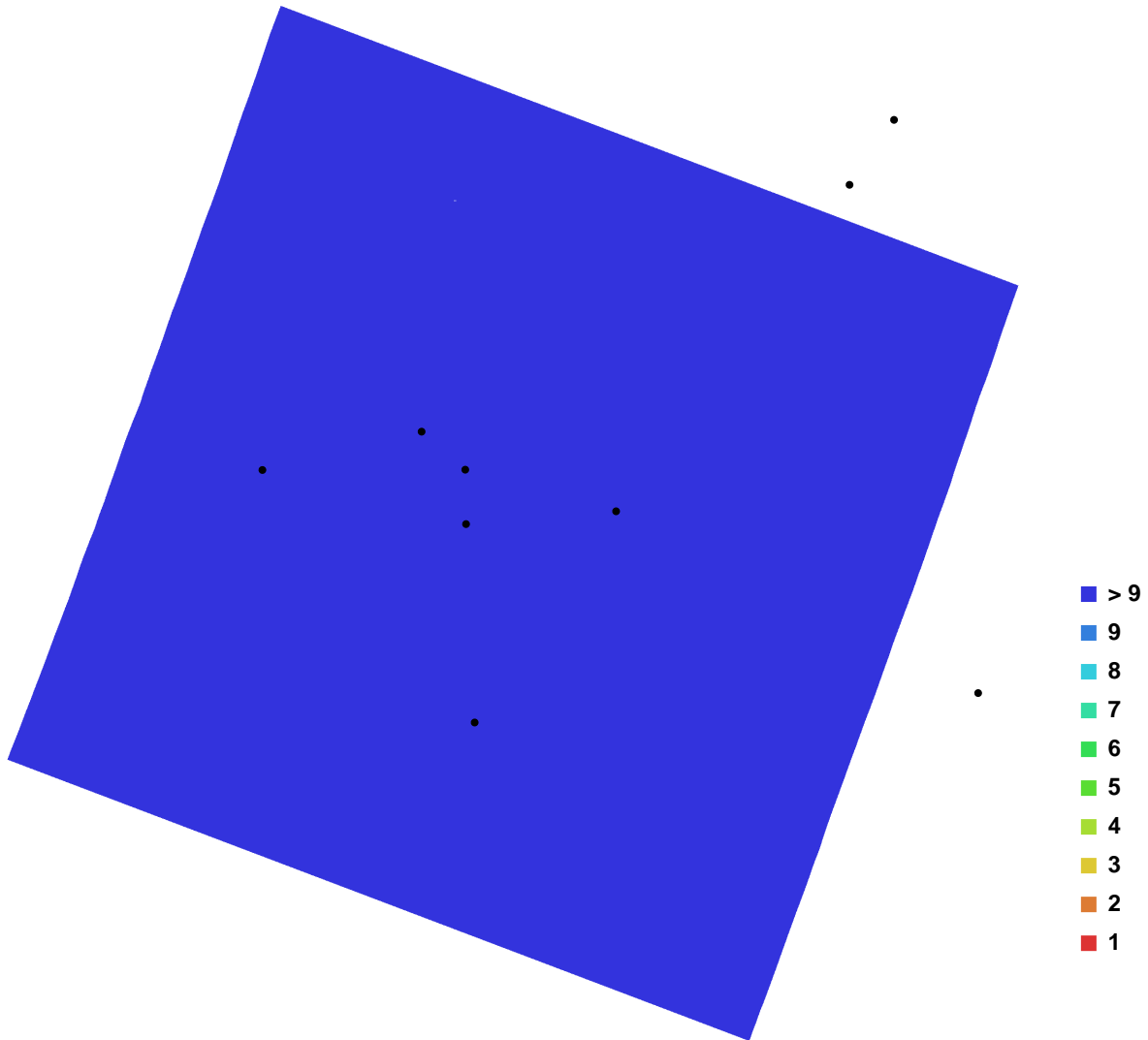


Fig. 1. Camera locations and image overlap.

Number of images:	22	Camera stations:	22
Flying altitude:	2.24405 m	Tie-points:	88776
Ground resolution:	0.000318299 m/pix	Projections:	213726
Coverage area:	1.18301e-006 sq km	Error:	0.691109 pix

Camera Model	Resolution	Focal Length	Pixel Size	Precalibrated
Canon EOS M (18 mm)	5184 x 3456	18 mm	4.384 x 4.384 um	No

Table. 1. Cameras.

Digital Elevation Model

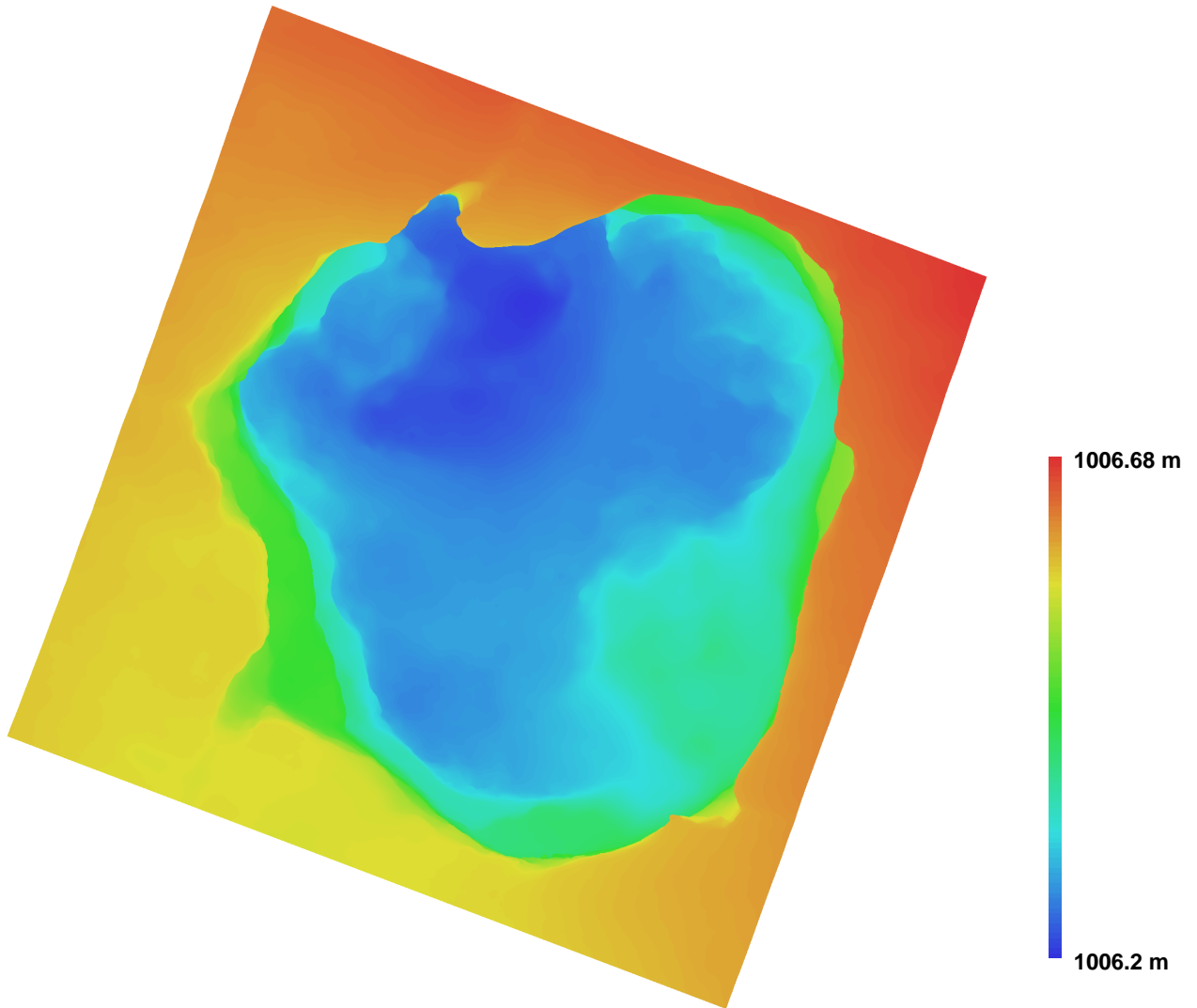


Fig. 2. Reconstructed digital elevation model.

Resolution: 0.0012732 m/pix
Point density: 616892 points per sq m