



CORONADO



Santa Fe





Hotel del Coronado

Coronado

Coronado is the one grand beach resort of the Pacific Coast. Ideally situated on a peninsula opposite San Diego, and between San Diego Bay and the Pacific Ocean, Coronado is favored with a balmy and almost perfect climate the year 'round.

The famous Hotel del Coronado enjoys the distinction of being the largest resort hotel in the world, as well as one of the most magnificently situated and arranged. It is located in the midst of beautiful grounds, immediately on the ocean beach, and has an interior court filled with luxurious flowers and palms. It has a refined society. You meet people you are glad to count among your friends.

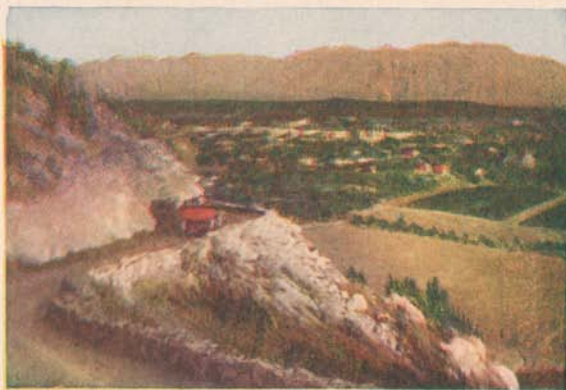
Coronado's even climate means every day an out-of-doors day and you will find every facility for golf, polo, tennis, boating, bathing, fishing, motoring, etc. It is just a four-hour ride from Los Angeles, and for fifty miles the train skirts the Pacific Ocean. You pass within camera shot of old San Juan Capistrano, one of the earliest and most picturesque missions of California.

The ferry ride across San Diego Bay to Coronado only adds to the charms of this short journey. Our Coronado folder gives several views. Ask for it.

Trains leave Los Angeles 8:55 a. m., 2:15 p. m., 12:15 a. m.

Round trip rate to San Diego, limit ten days, \$5.00.

Round trip rate to San Diego, limit thirty days, \$7.00.



Scene from Rubidoux Mt., Riverside

Kite Shaped Track

A visit to Southern California is not complete without a trip around the Kite Shaped Track. No other trip so effectively combines all the scenic charms of Southern California.

One hundred and sixty-six miles through a veritable garden of golden fruit and flowers, flanked by snow-capped mountains. The interest of the sightseer is held from the time he boards the train until he leaves it — no scene twice seen — a continually changing panorama of most novel and interesting scenery.

Stop of two hours is made at Redlands for drive to Smiley Heights; also two hours at Riverside for drive down Magnolia Avenue and to Rubidoux Heights. Redlands and Riverside are two of California's gems.

The return trip from Riverside is made through Santa Ana Canyon to Orange, then through the English walnut groves, passing the great McNally Ranch, arriving Los Angeles and Pasadena in time for dinner.

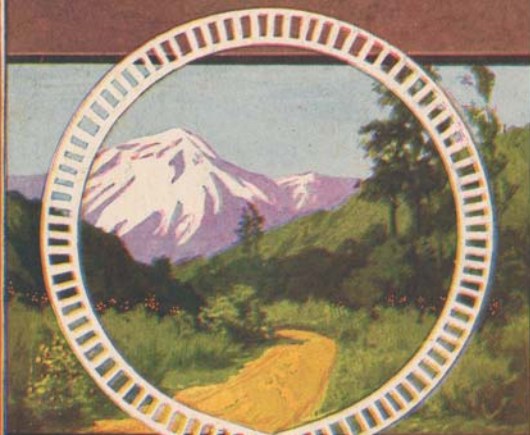
Observation car is operated in our Kite train during winter months in order that passengers may get best possible view. Our new Kite Shaped Track folders give several excellent views as well as map of the Kite Shaped Track trip. They are free. Ask for them.

Train leaves Los Angeles 8:30 a.m. Leaves Pasadena 8:57 a.m.

\$3.00 Round Trip, good for eight days.

\$2.05 Round Trip on Sundays, limited to date of sale.

KITE SHAPED



TRACK

No Scene Twice Seen