

INFORMAL REPORT AND INDEX OF
NAVIGATION, DEPTH, MAGNETIC AND SUBBOTTOM PROFILER DATA
(Issued October 1988)

RAITT EXPEDITION

LEG 1

=====

R/V Washington

San Diego, California (9 January 1988)
to
Acapulco, Mexico (7 February 1988)

Chief Scientist - M. Purdy

Woods Hole Oceanographic Institution

Resident Marine Technician - R. Wilson

Post-Cruise Processing and Report Preparation
by Geological Data Center, Scripps Institution of Oceanography

Data Collection and Processing Funded by NSF
Grant Number OCE87-02835

NOTE: This is an index of underway geophysical data edited and processed after the completion of the cruise leg and is intended primarily for informal use within the institution. This document is not to be reproduced or distributed outside Scripps without prior approval of the chief scientist or the Geological Data Center, Scripps Institution of Oceanography, La Jolla, California 92093.

GDC Cruise I.D.# 237

INFORMAL REPORT AND INDEX OF NAVIGATION
AND UNDERWAY GEOPHYSICAL DATA

Processed by the Geological Data Center
Scripps Institution of Oceanography

Contents:

-
- Index Chart - gives track of cruise leg, dates, ports, and mileage of each type of data collected.
- Track Charts - annotated with dates and hour ticks.
- Profiles - depth, magnetic anomaly and gravity free air anomaly vs. distance. Sections of track having subbottom profiles (airgun or watergun) records have a wide black line along the bottom of the profile. Sections having Sea Beam are indicated by a narrow black line.
- Sample Index - list of beginning and end times and positions of all underway records as well as all other samples and measurements (geology, biology, physical oceanography, etc.) collected on the cruise leg.

NOTE: One or more of the underway data types may not be collected on a given cruise leg.

For information on the availability and reproduction costs of data in the following forms, contact S. M. Smith, Curator, Geological Data Center, Scripps Institution of Oceanography, La Jolla, CA 92093. Phone (619)534-2752.

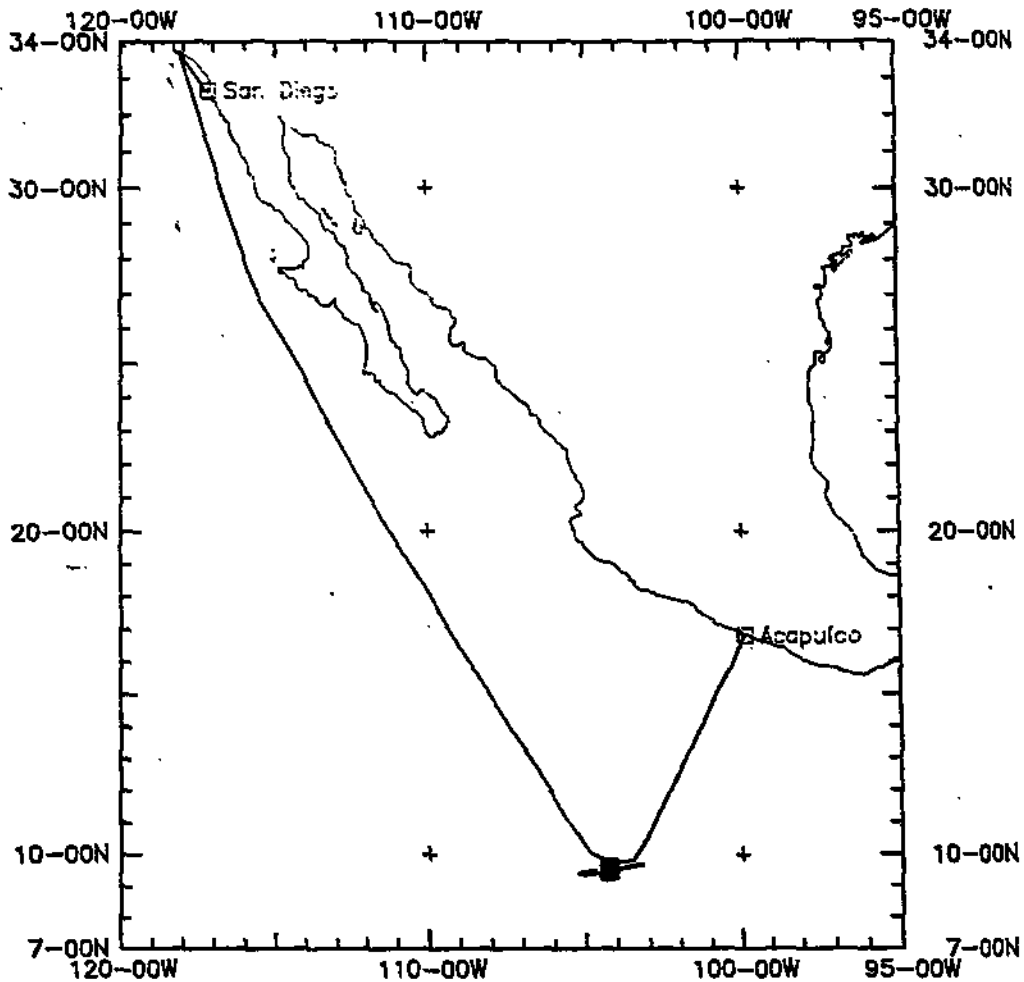
1. Navigation listing with times and positions of course and speed changes, fixes and drift velocity.
2. Depth compilation plots - compilation plots at the traditional scale of 4in/degree longitude (1:1,000,000) are no longer produced for Sea Beam cruises. Custom plots may be requested of vertical beam (2 $\frac{2}{3}$ degree beam width) depths retrieved at one minute intervals of ship time.
3. Plots of depths, magnetics or gravity profiles along track - custom plots at various map and profile scales on Mercator projection may be requested.
4. Separate time series files of navigation, depth, gravity and magnetics as well as these data merged in the MGD77 Exchange format on magnetic tape.
5. Microfilm or Xerox copies of:
 - a. Echosounder records - 12 and 3.5 kHz frequency
 - b. Subbottom profiler records
 - c. Magnetometer records
 - d. Underway data log book

SIO Sea Beam Data

The following forms are available, subject to approval of the cruise leg chief scientist:

- 1) Archive copy of contour swath books generated in real time on board ship available for inspection at the data center.
- 2) Microfilm (35mm flowfilm) containing swath books plus, for some cruises, the Sea Beam monitor record and navigation list.
- 3) Sea Beam merged tapes - Sea Beam data merged with navigation. (Navigation is edited to the extent that DR courses and speeds are edited and poor fixes are removed after inspection of drift vectors between fix pairs. No editing is done on the basis of adjusting to overlapping Sea Beam swaths.)
- 4) Archive contour plots - 16"/degree chart scale, with contour interval nominally 50m, are generated for all transit lines. Some survey areas are plotted at appropriate scales as well. Available for inspection at data center; additional copies may be generated from plot files stored on tape.
- 5) Custom generated plots of Sea Beam swaths on Mercator projection in four colors at variable plot scales and contour intervals. There are provisions to adjust positions of individual track lines and to edit out beams (bad data or overlapping data on inside of turns).

revised October 1986



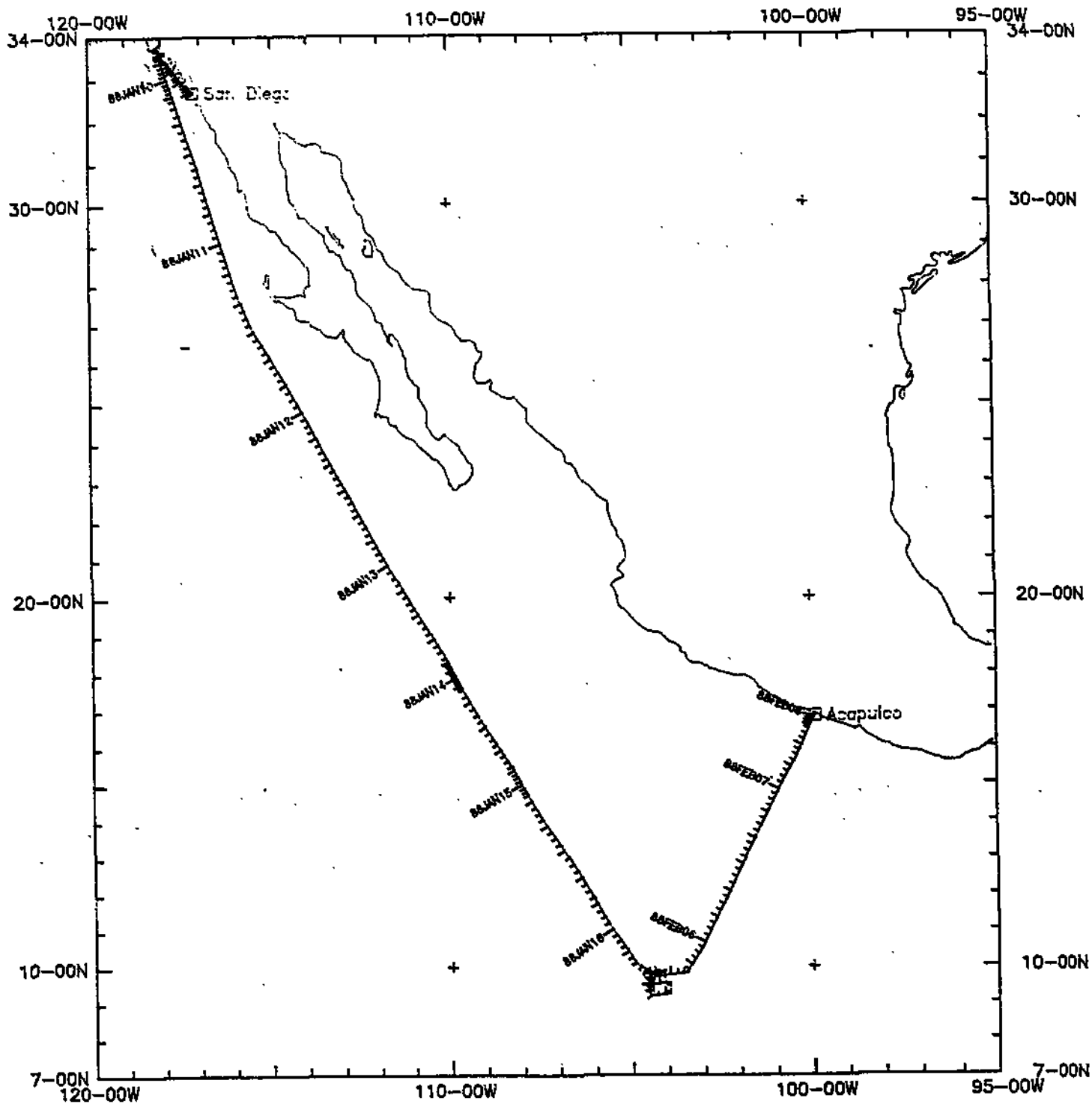
RAITT LEG 1 (RAIT01WT)

RAITT EXPEDITION LEG 1

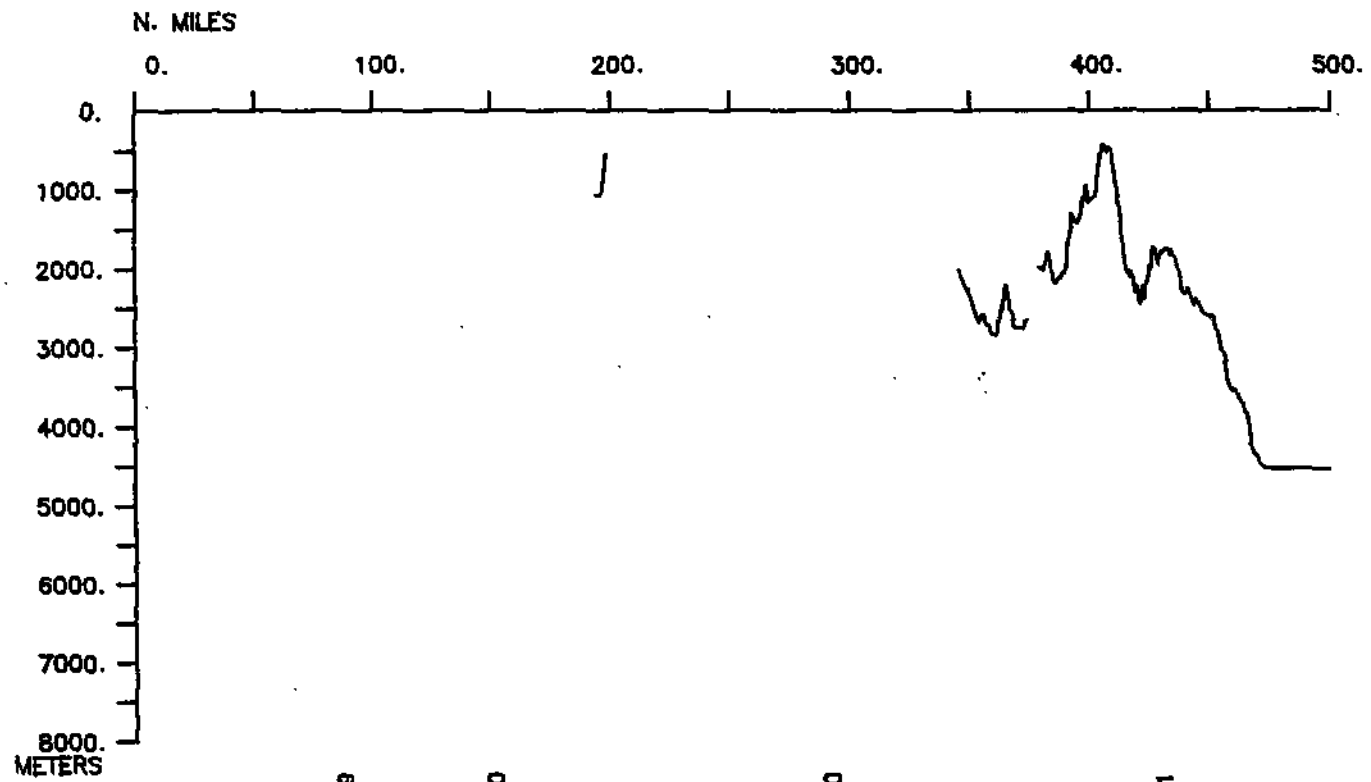
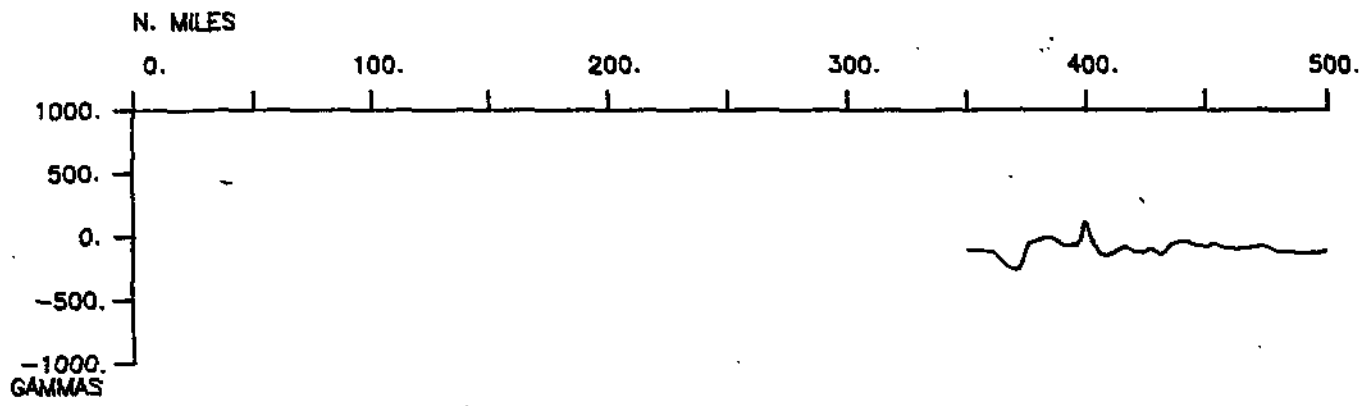
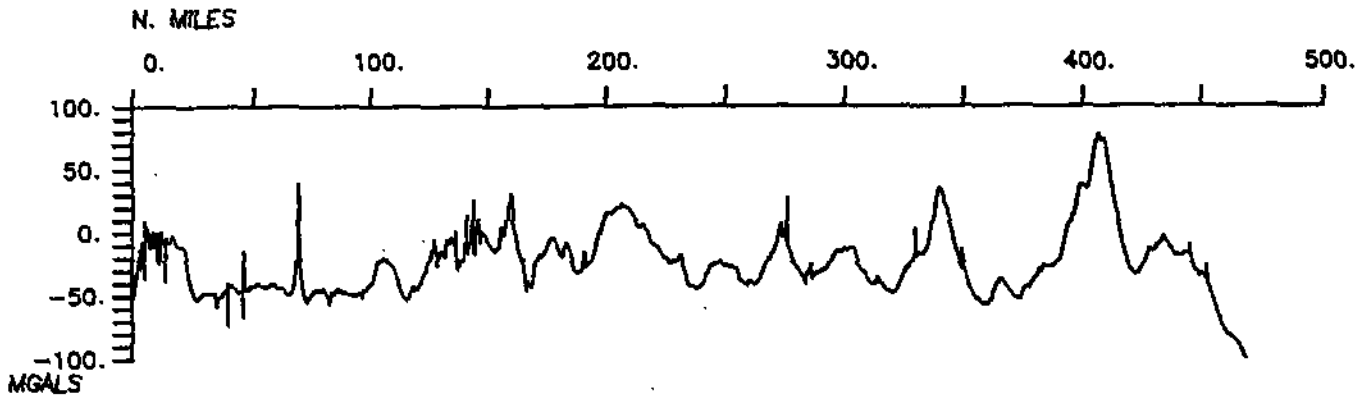
CHIEF SCIENTIST: M. Purdy
 (Woods Hole Oceanographic Institution)
 PORTS: San Diego, Calif. - Acapulco, Mexico
 DATES: 9 January - 7 February 1988
 SHIP: R/V T. Washington

TOTAL MILEAGE OF UNDERWAY DATA COLLECTED

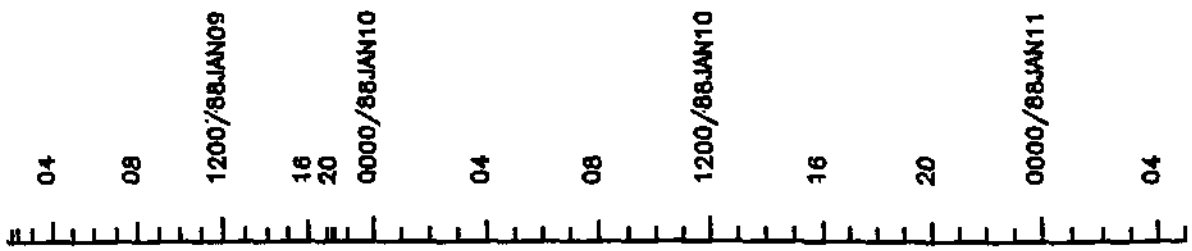
- 1) Cruise - 6263 miles
- 2) Bathymetry - 5678 miles
- 3) Magnetics - 4588 miles
- 4) Seismic Reflection - 50 miles
- 5) Gravity - 6263 miles
- 6) Sea Beam - 5678 miles

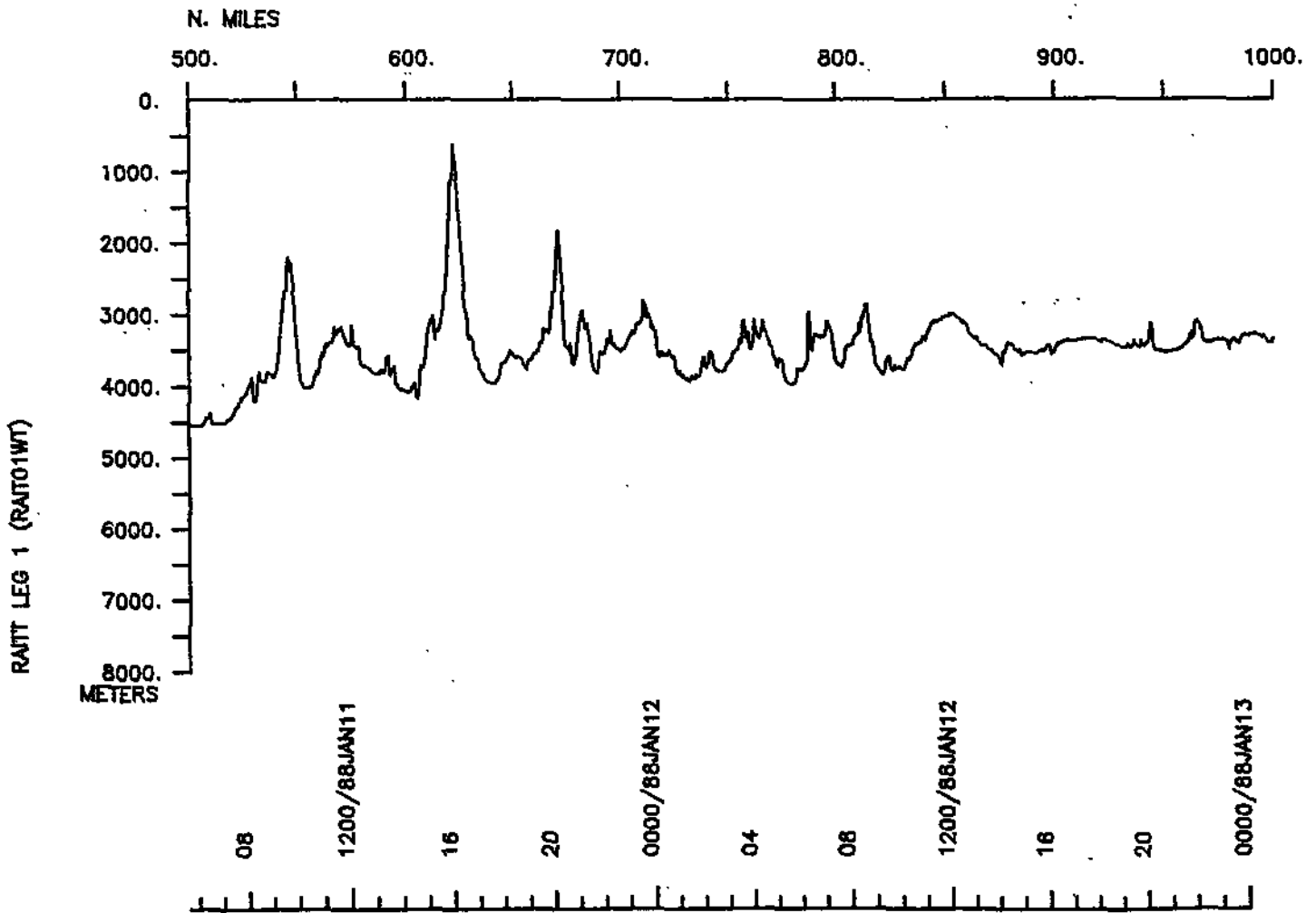
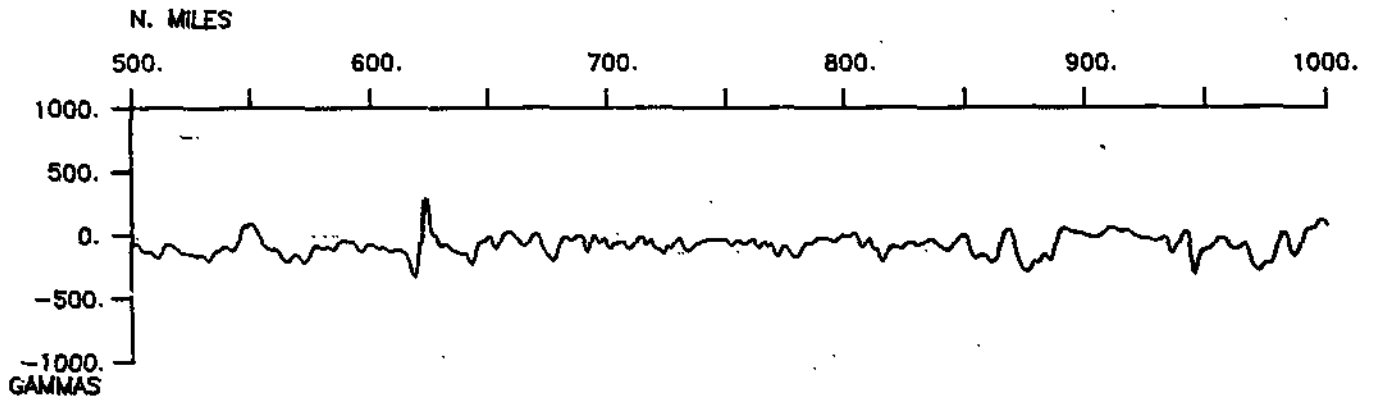
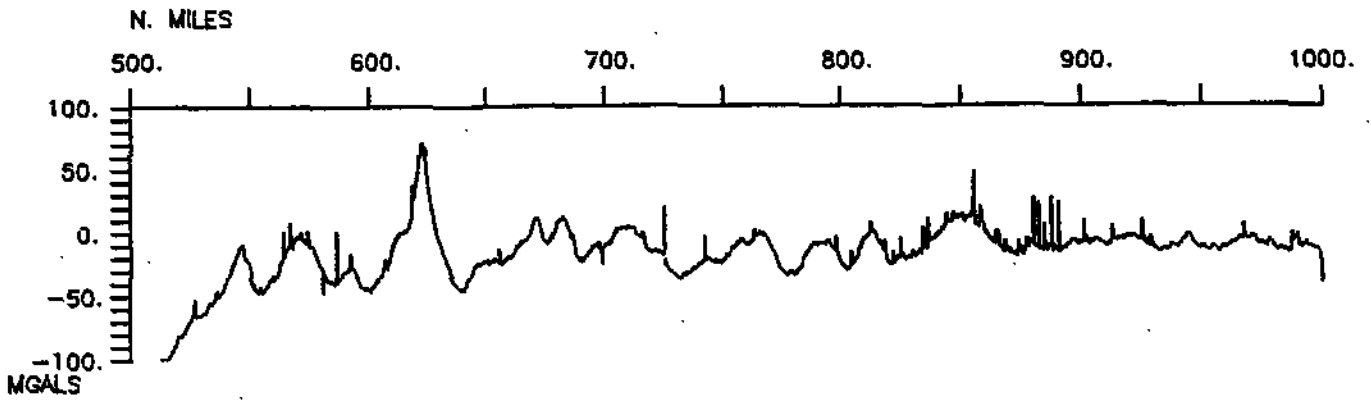


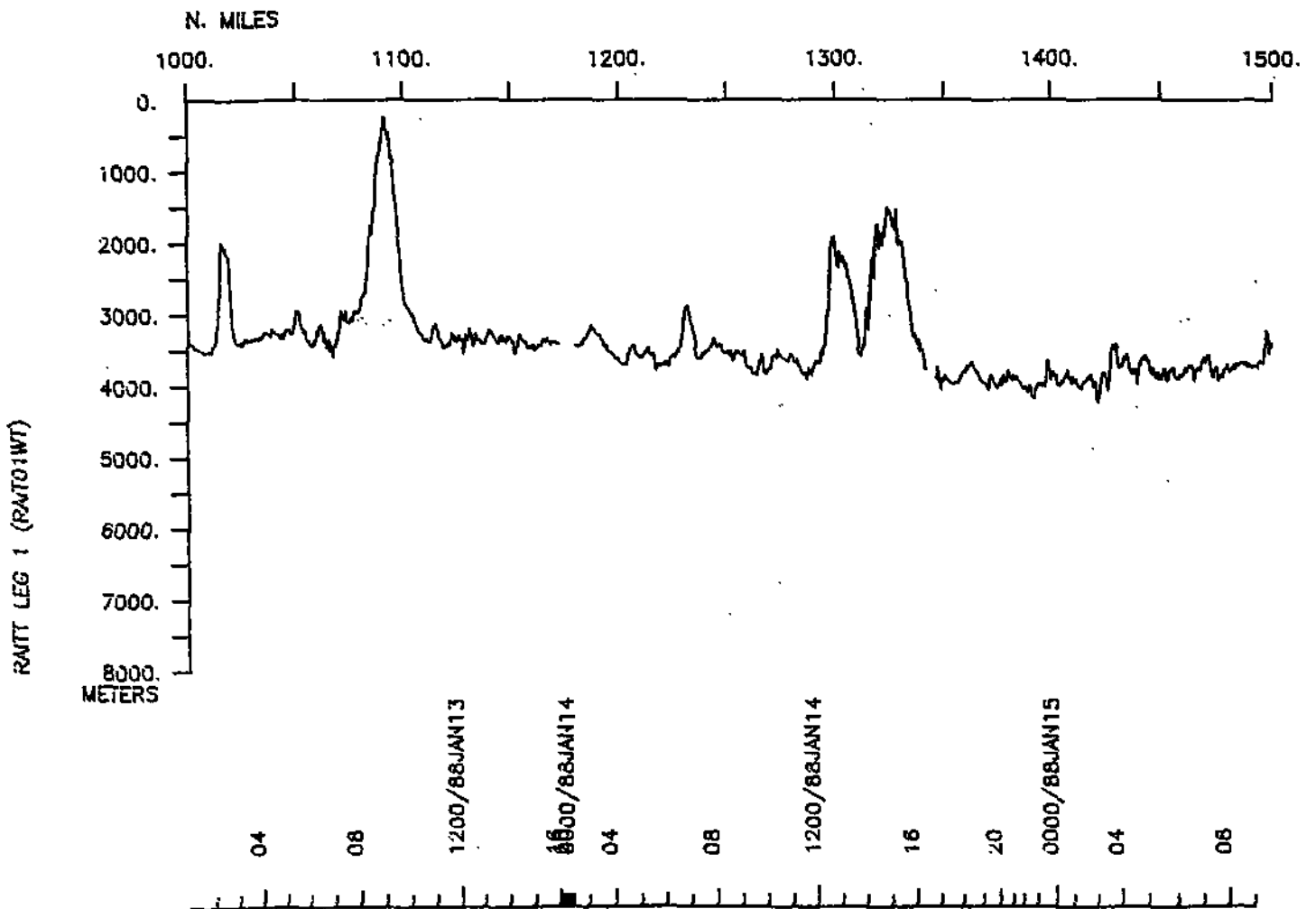
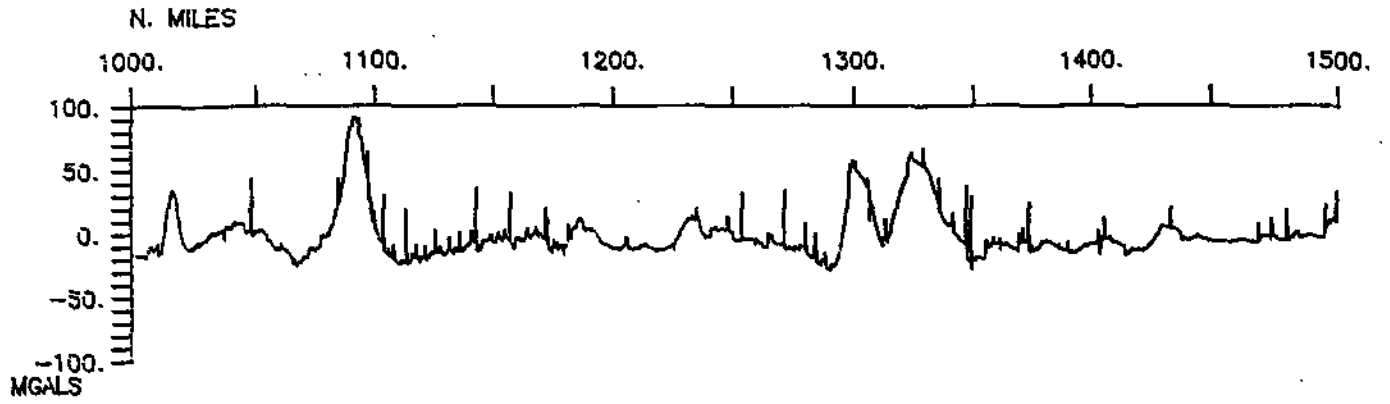
RAITT LEG 1 (RAIT01WT)

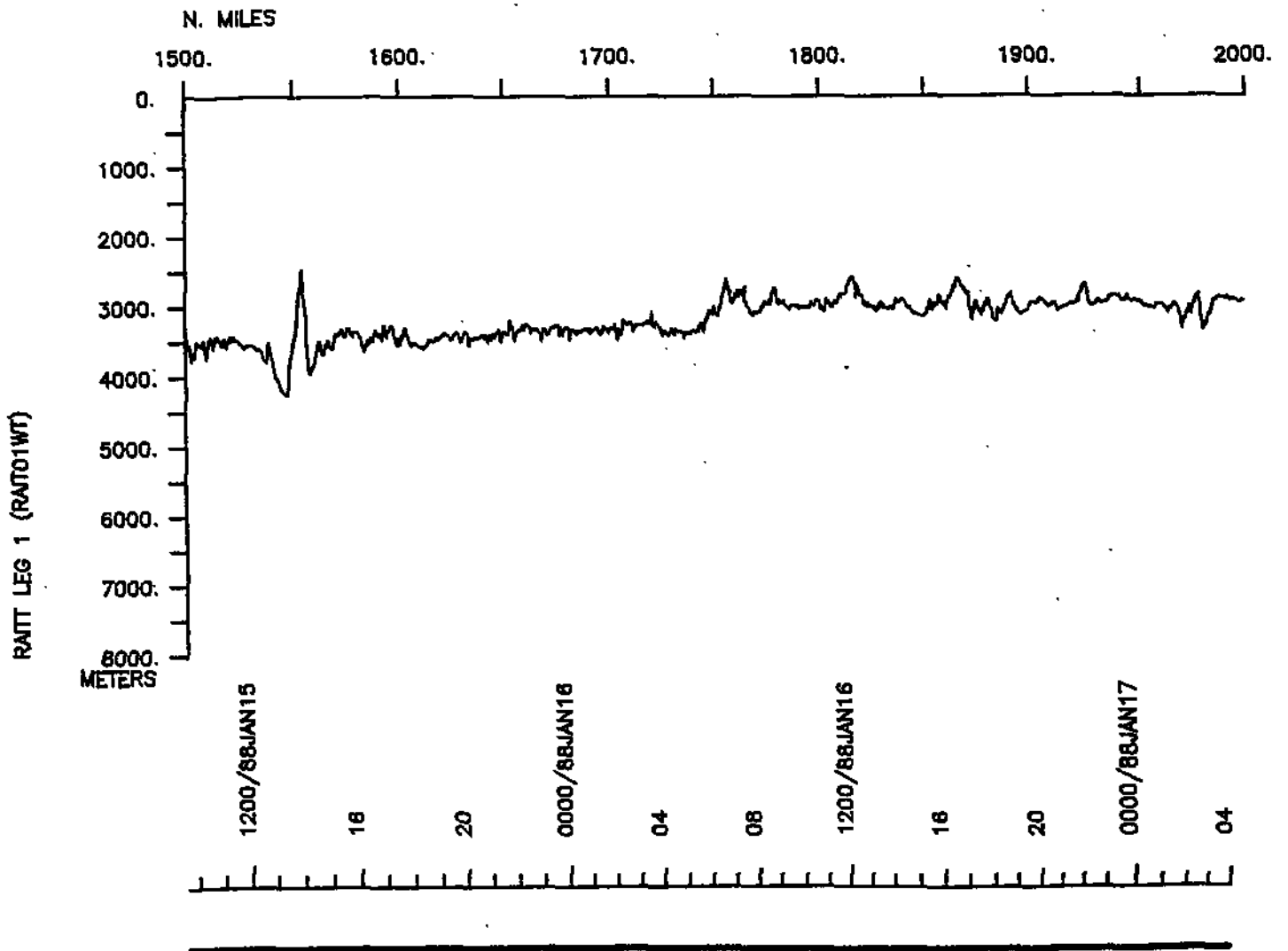
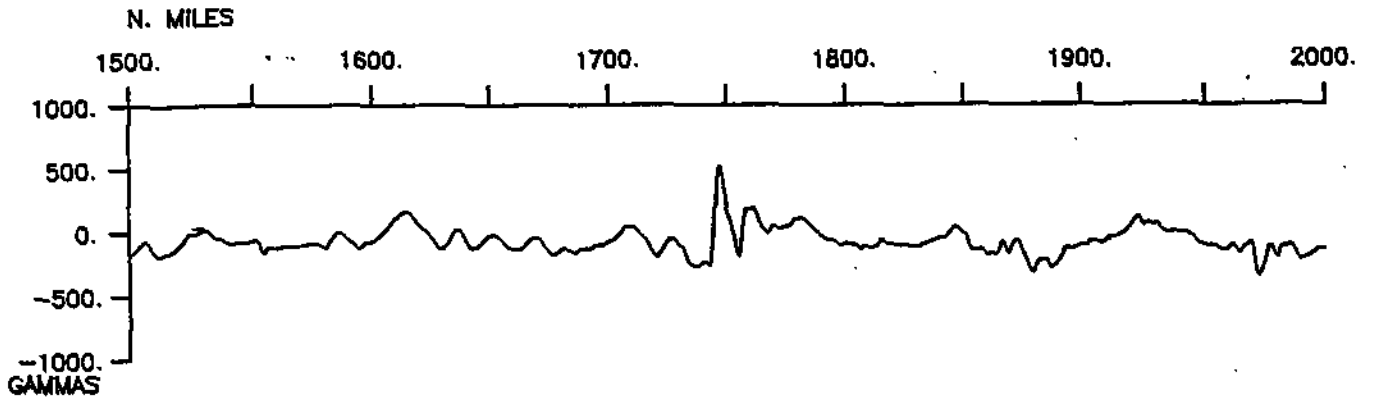
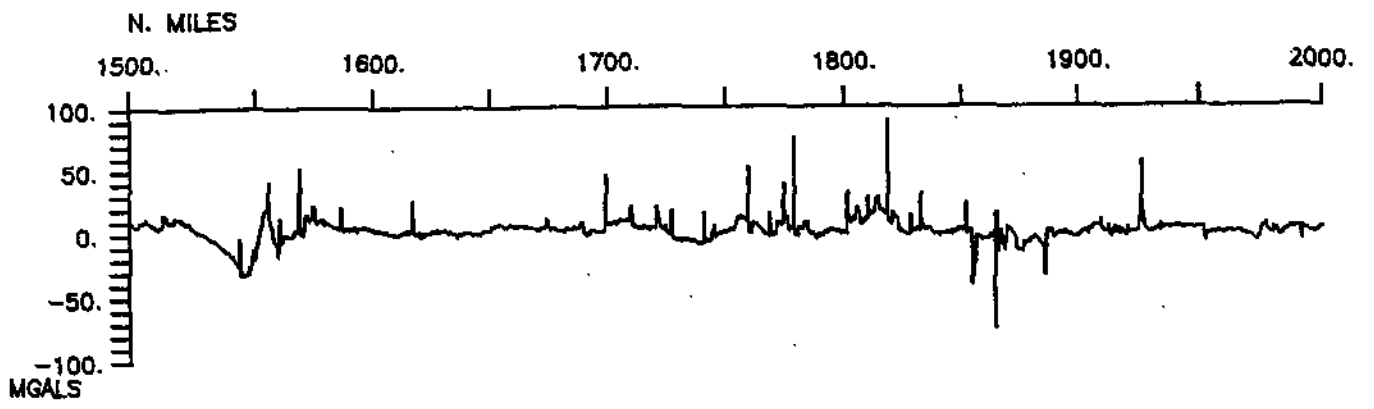


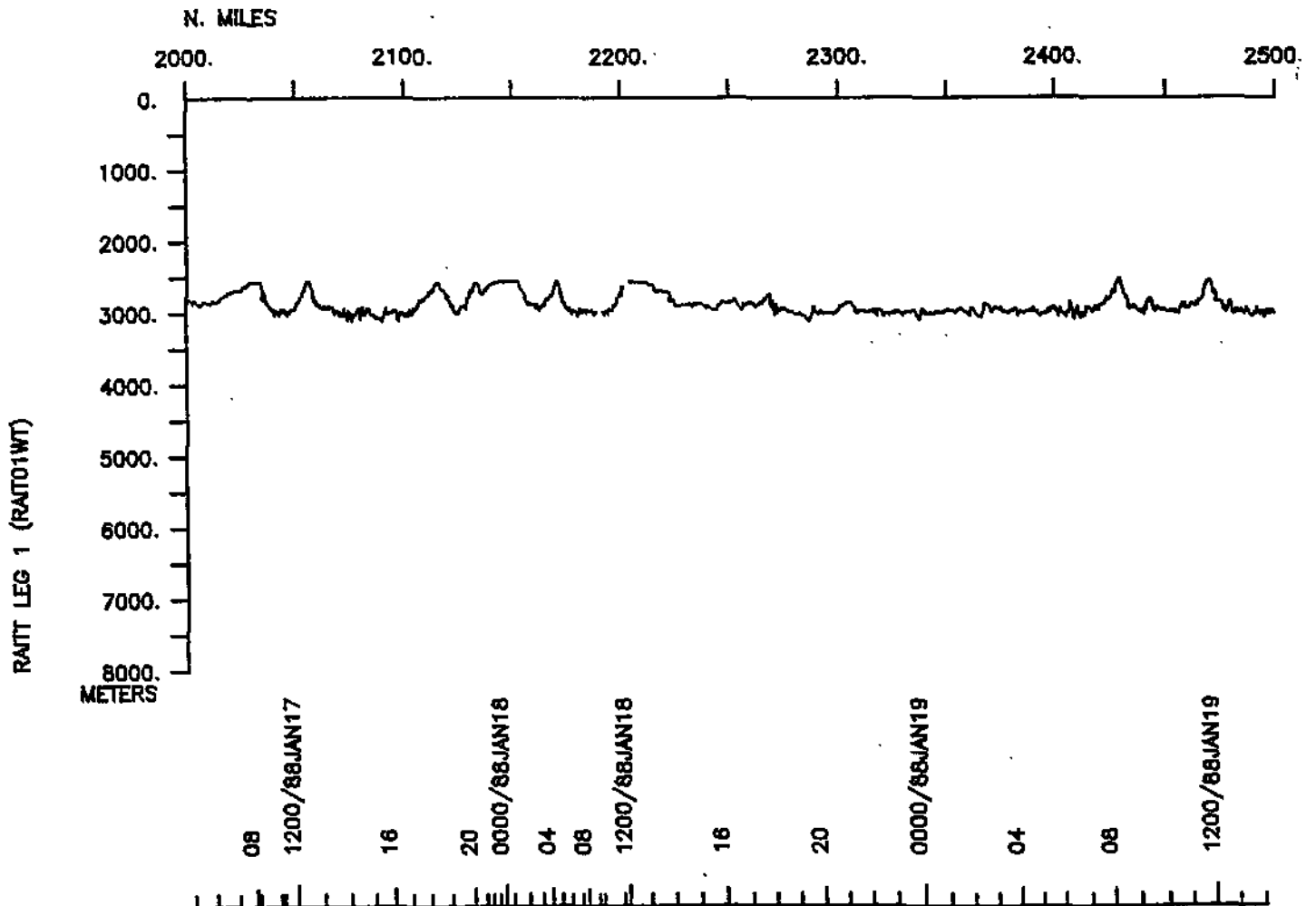
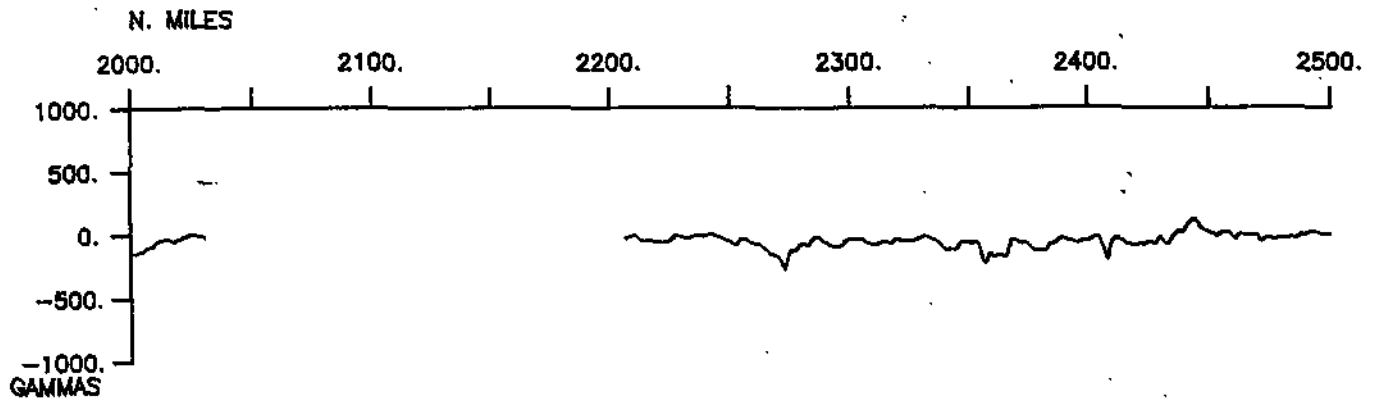
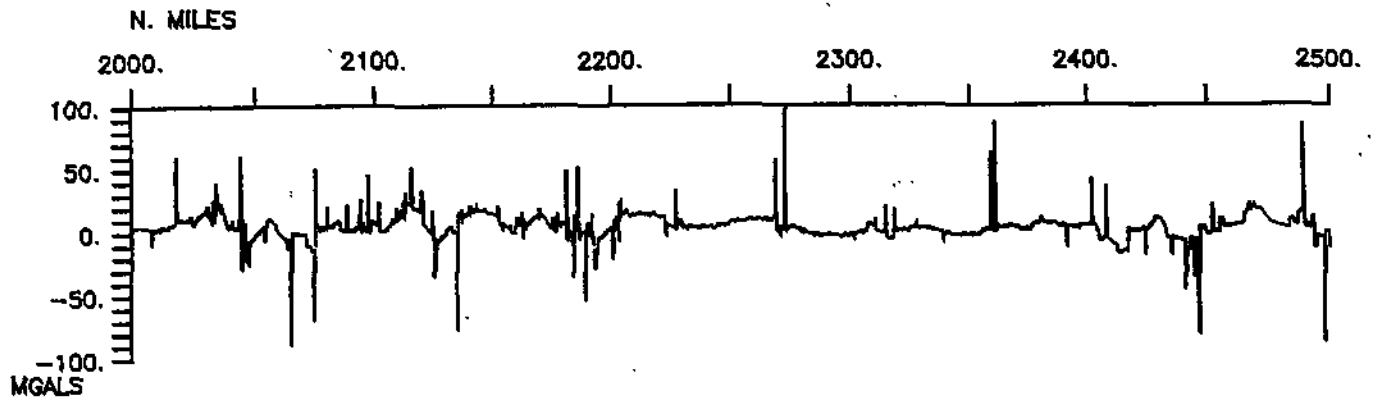
RAIT LEG 1 (RAIT01WT)

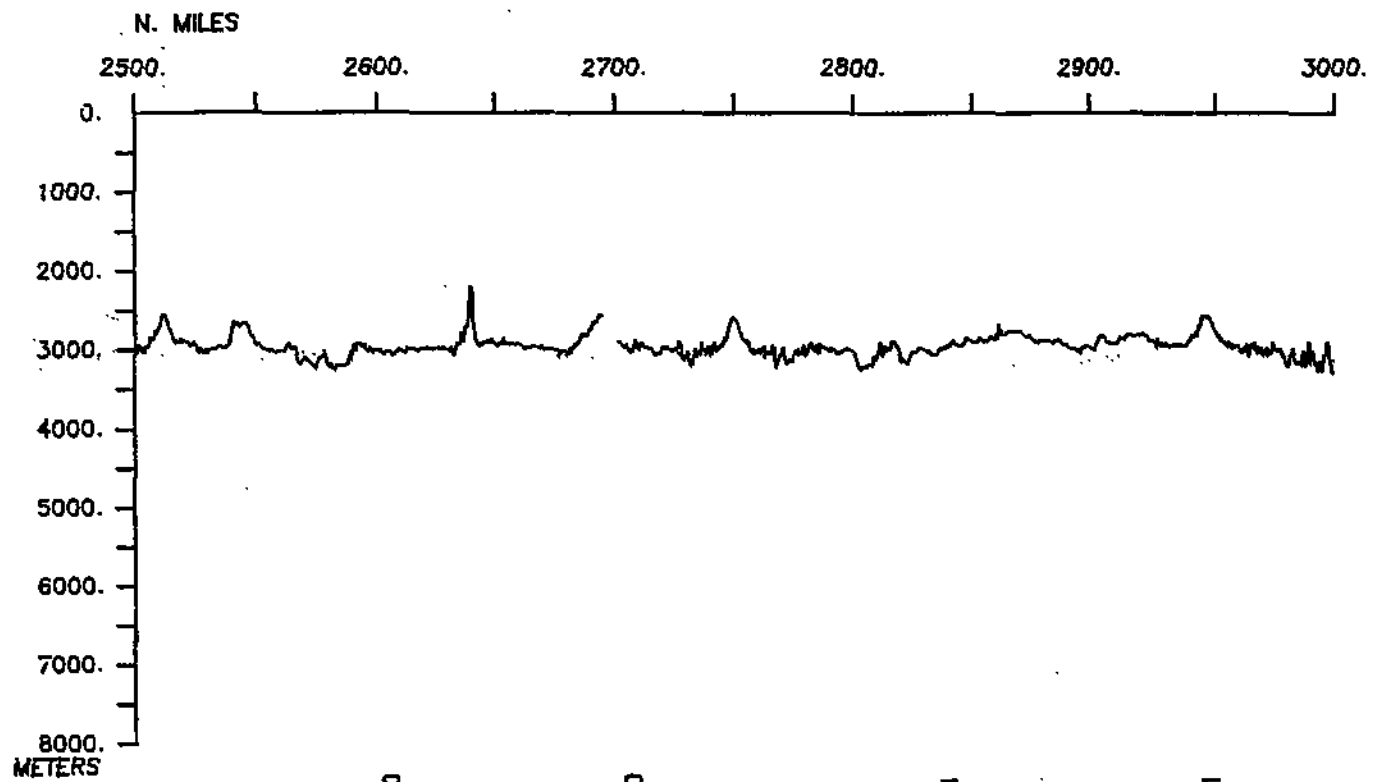
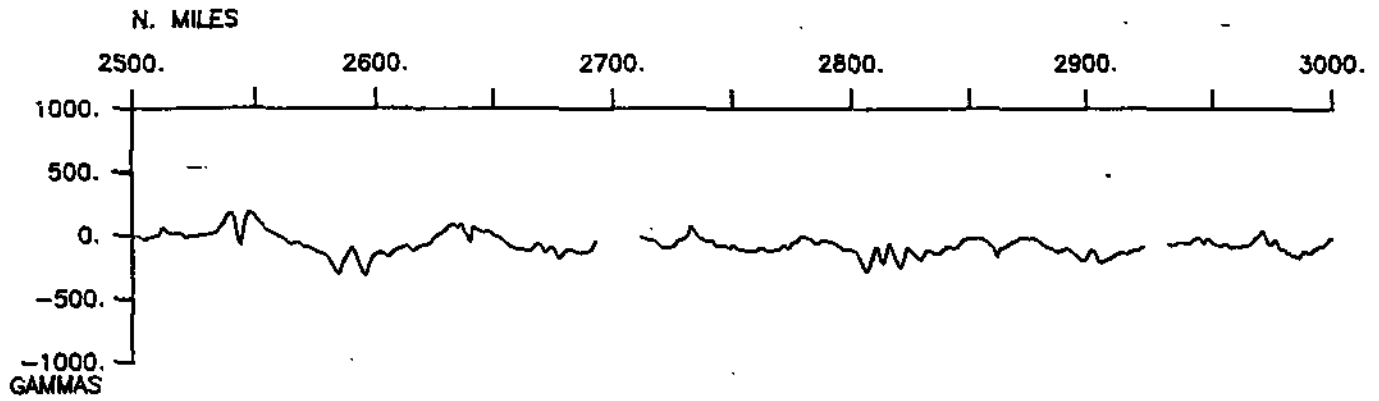




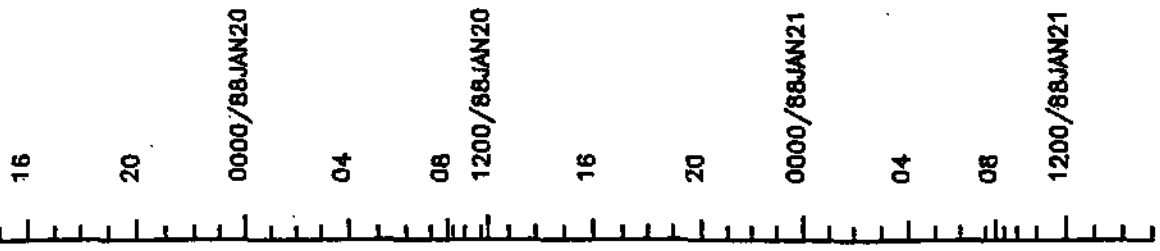


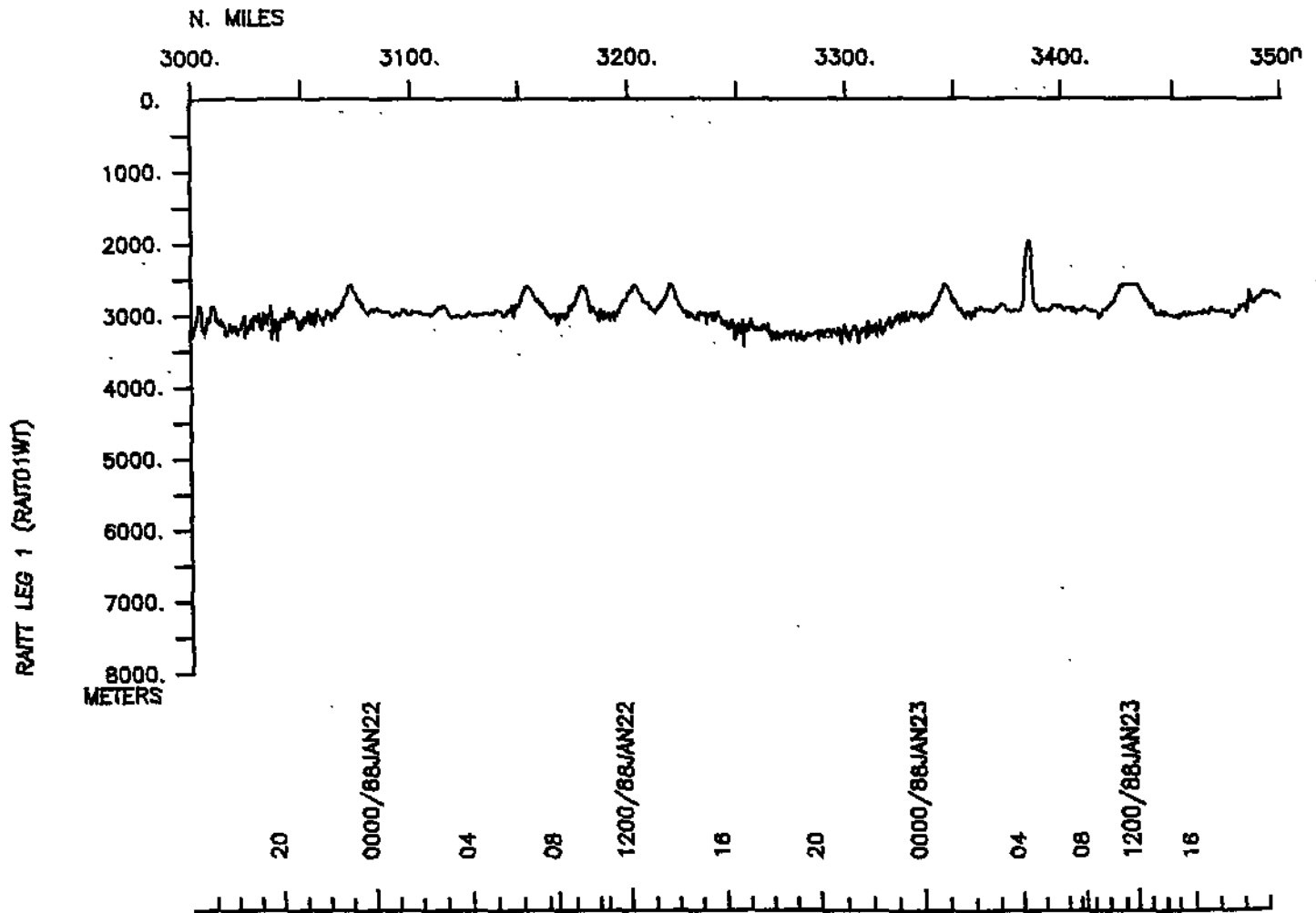
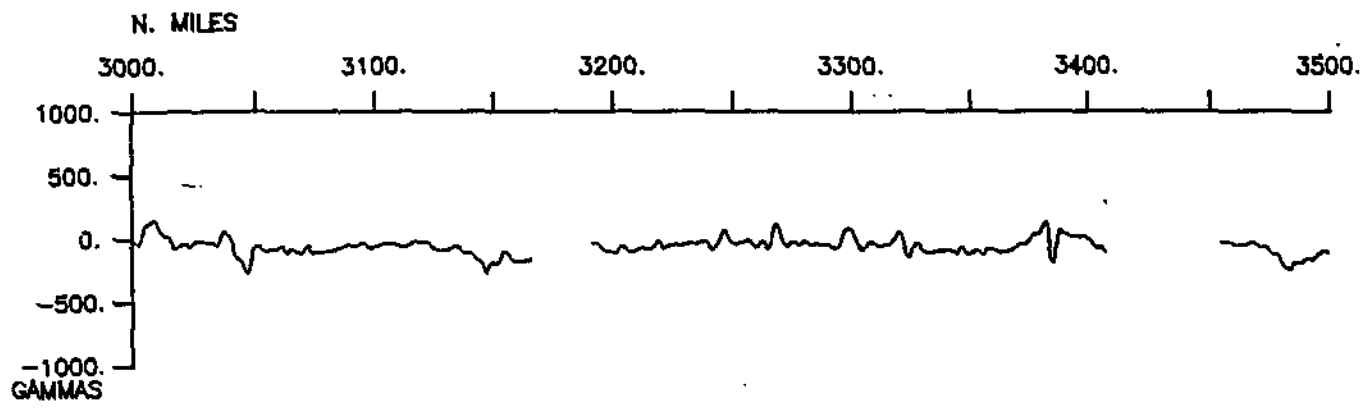


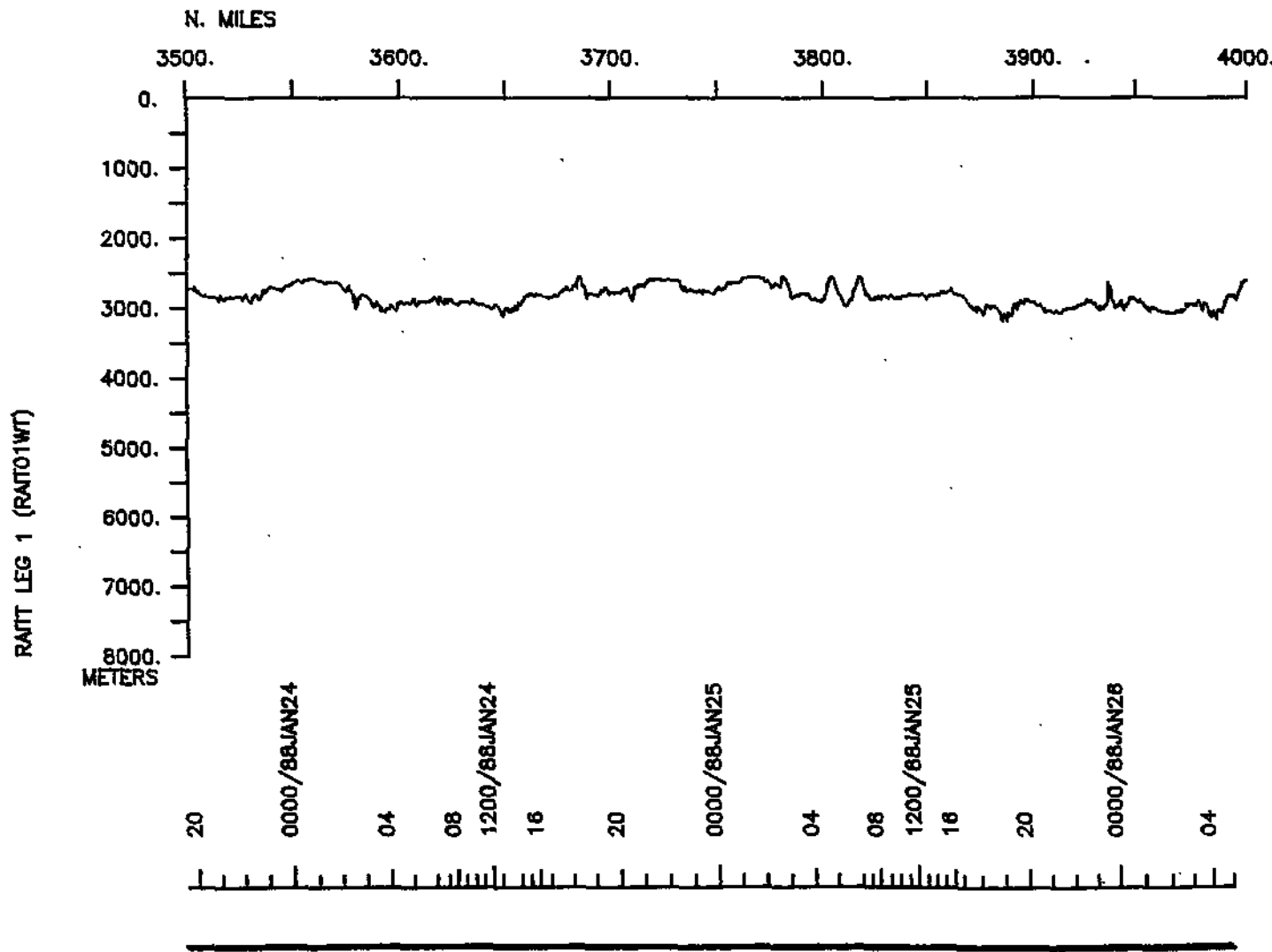
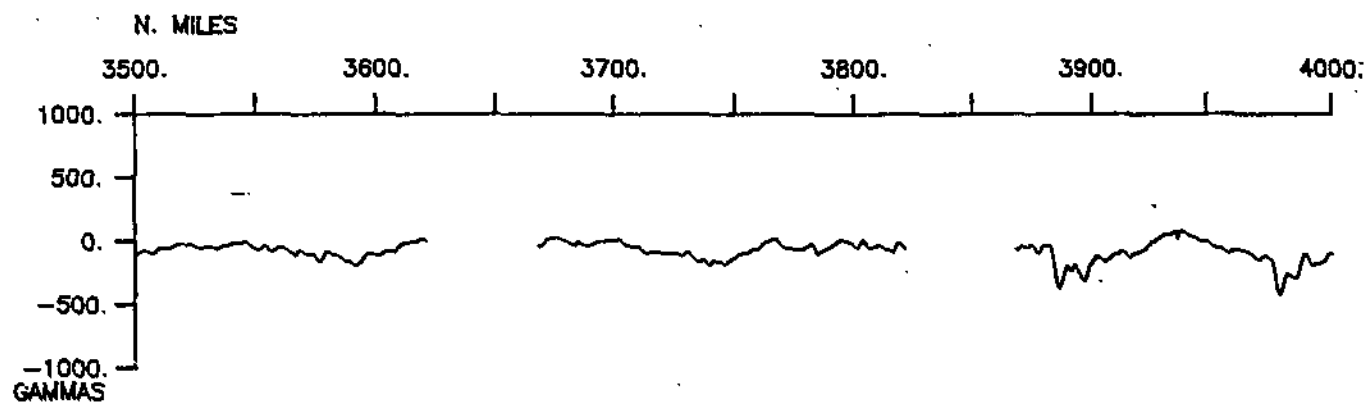


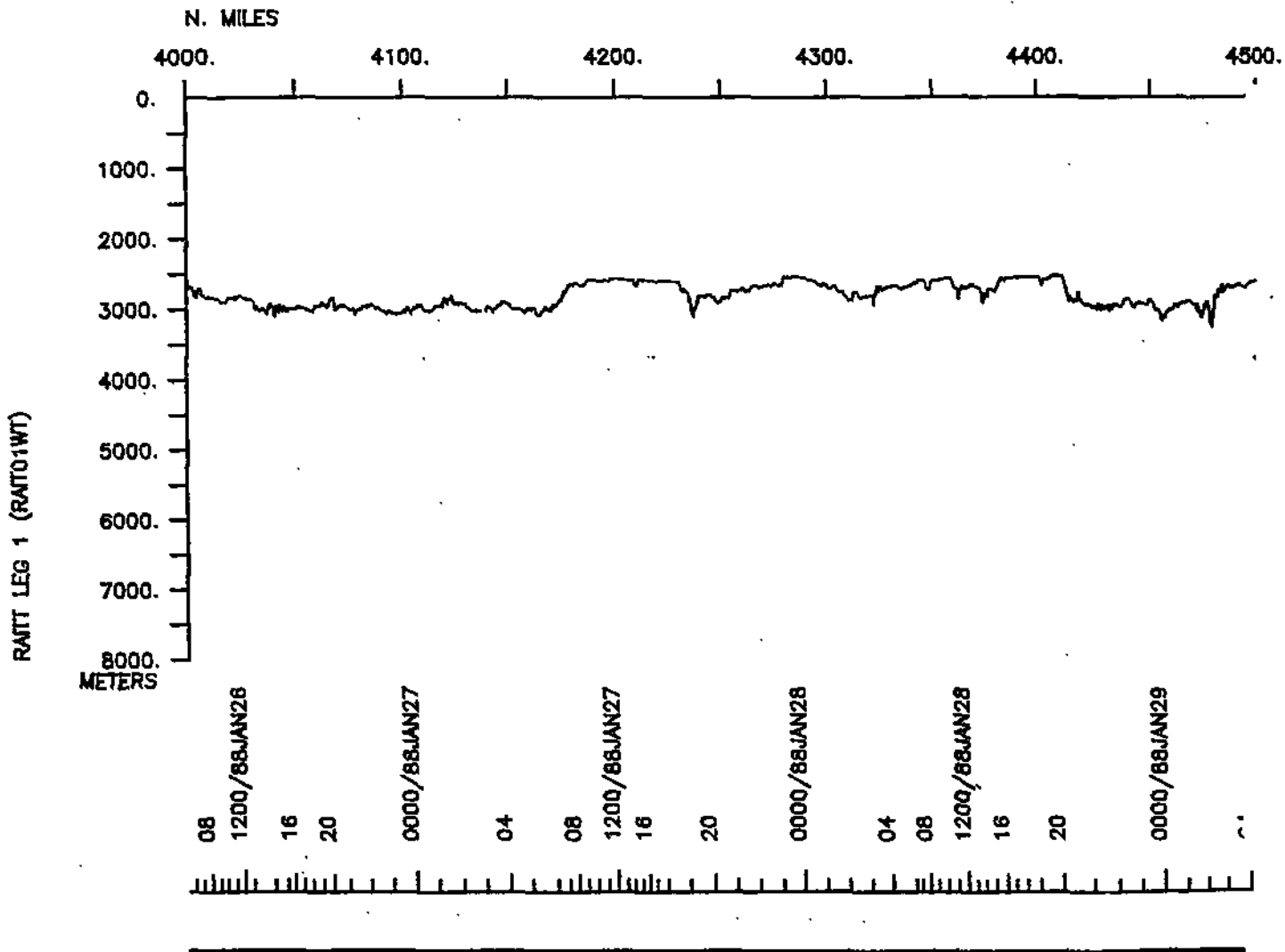
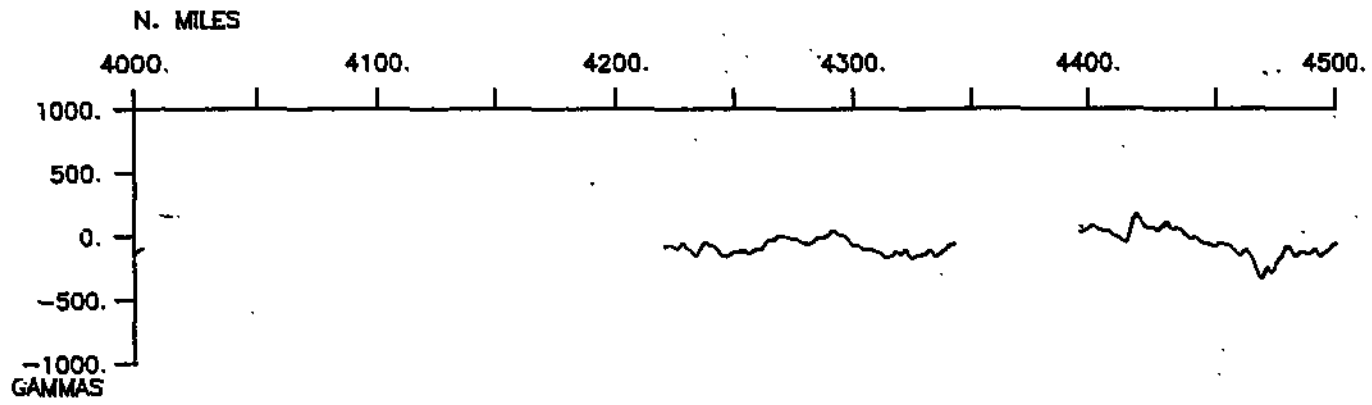
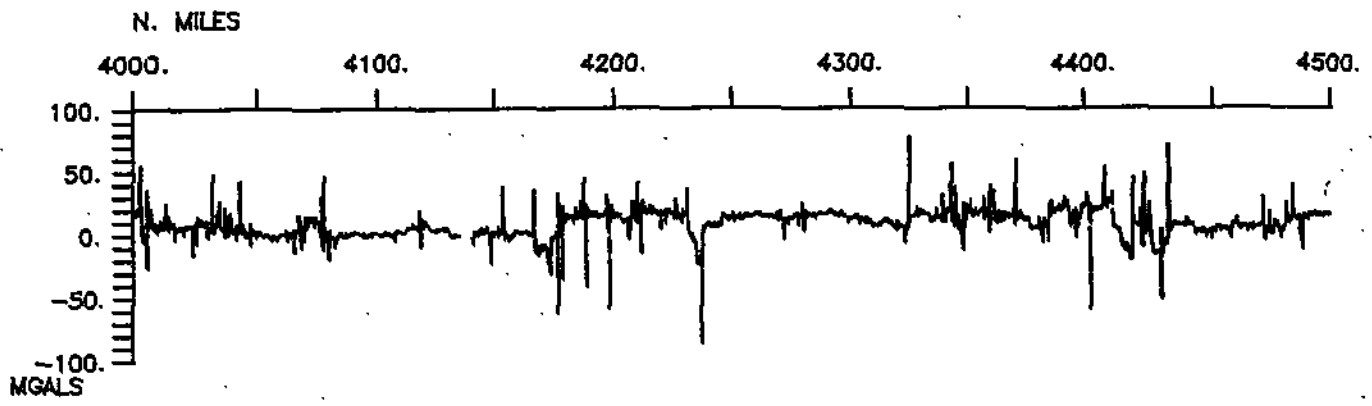


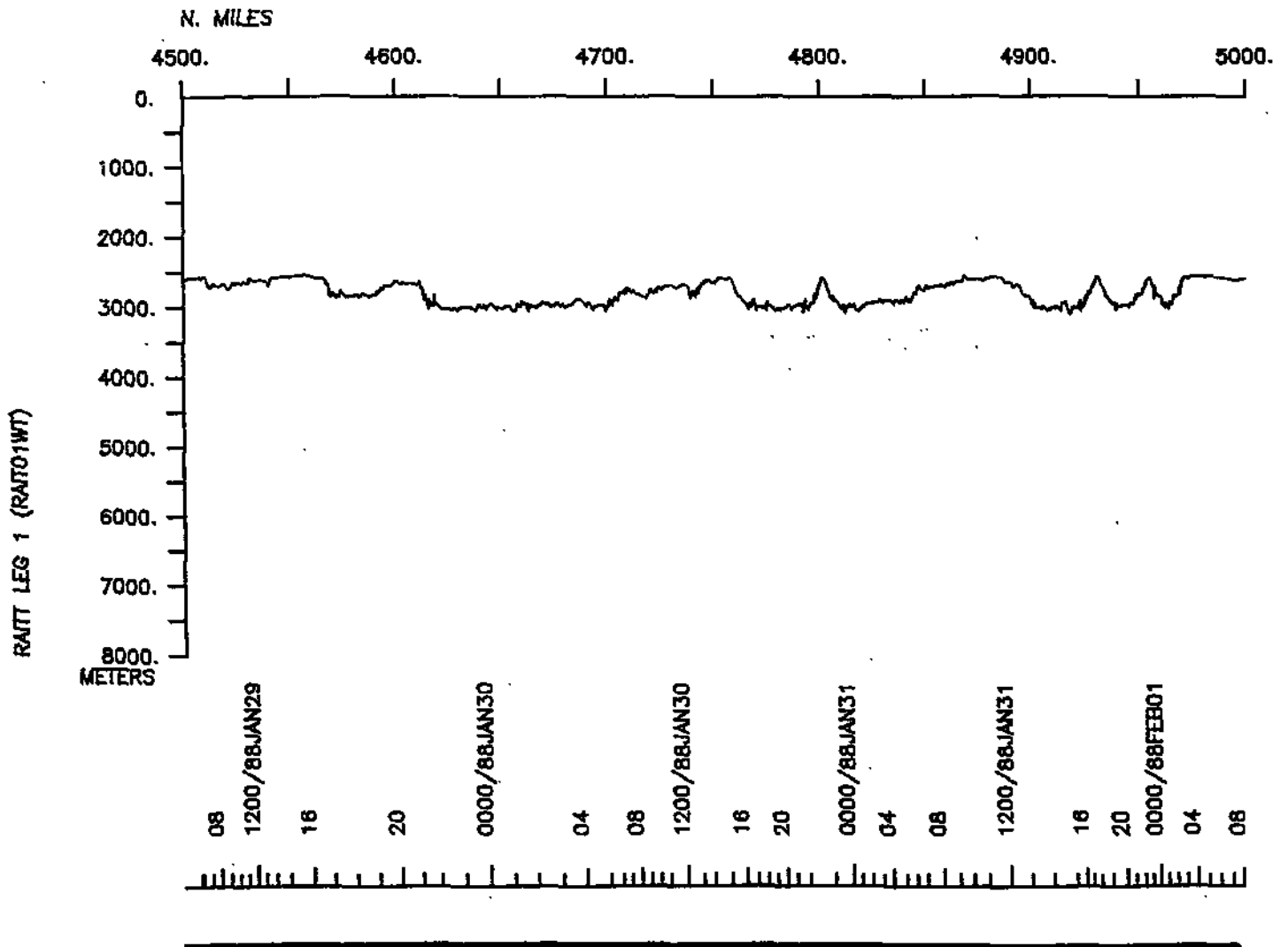
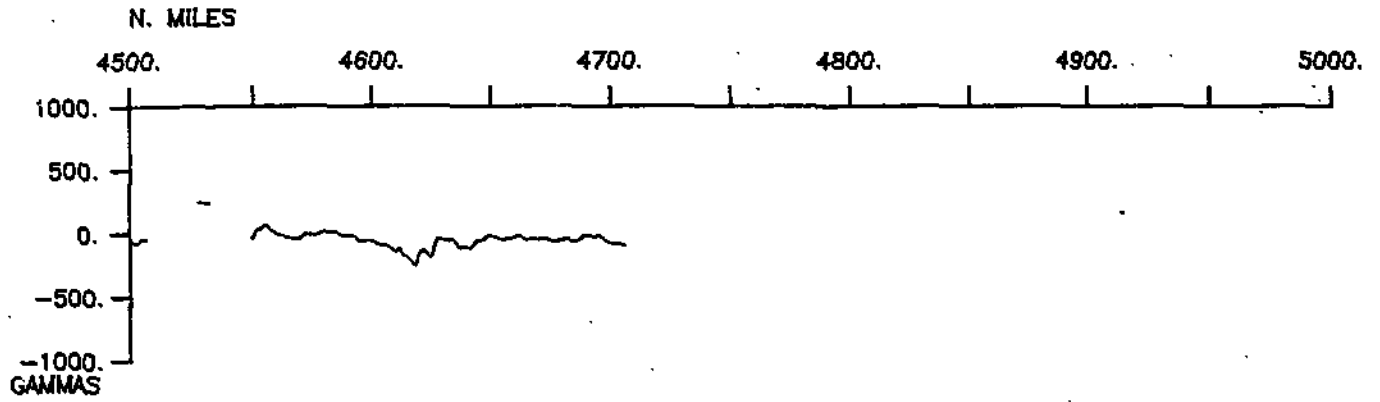
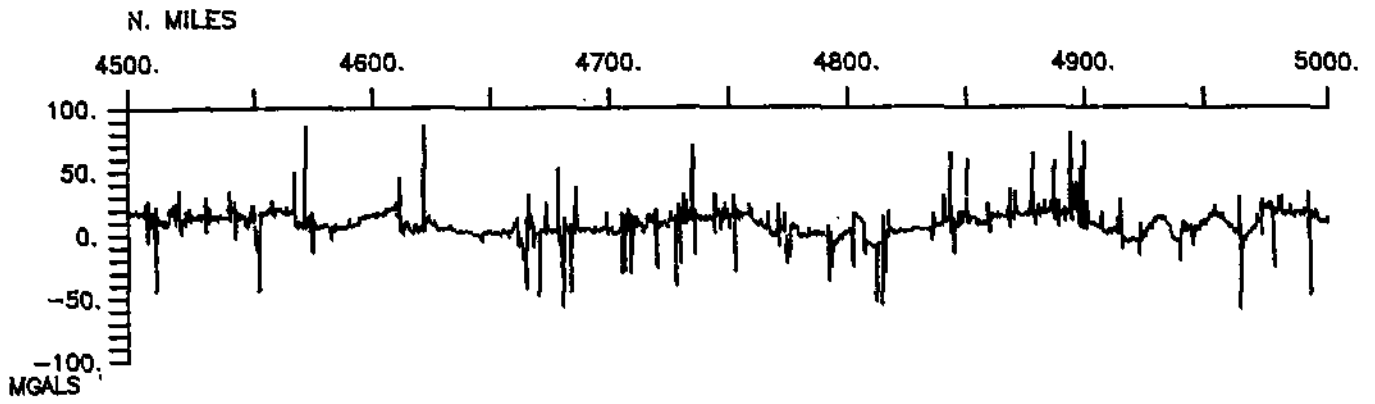
RAIT LEG 1 (RAIT01WT)

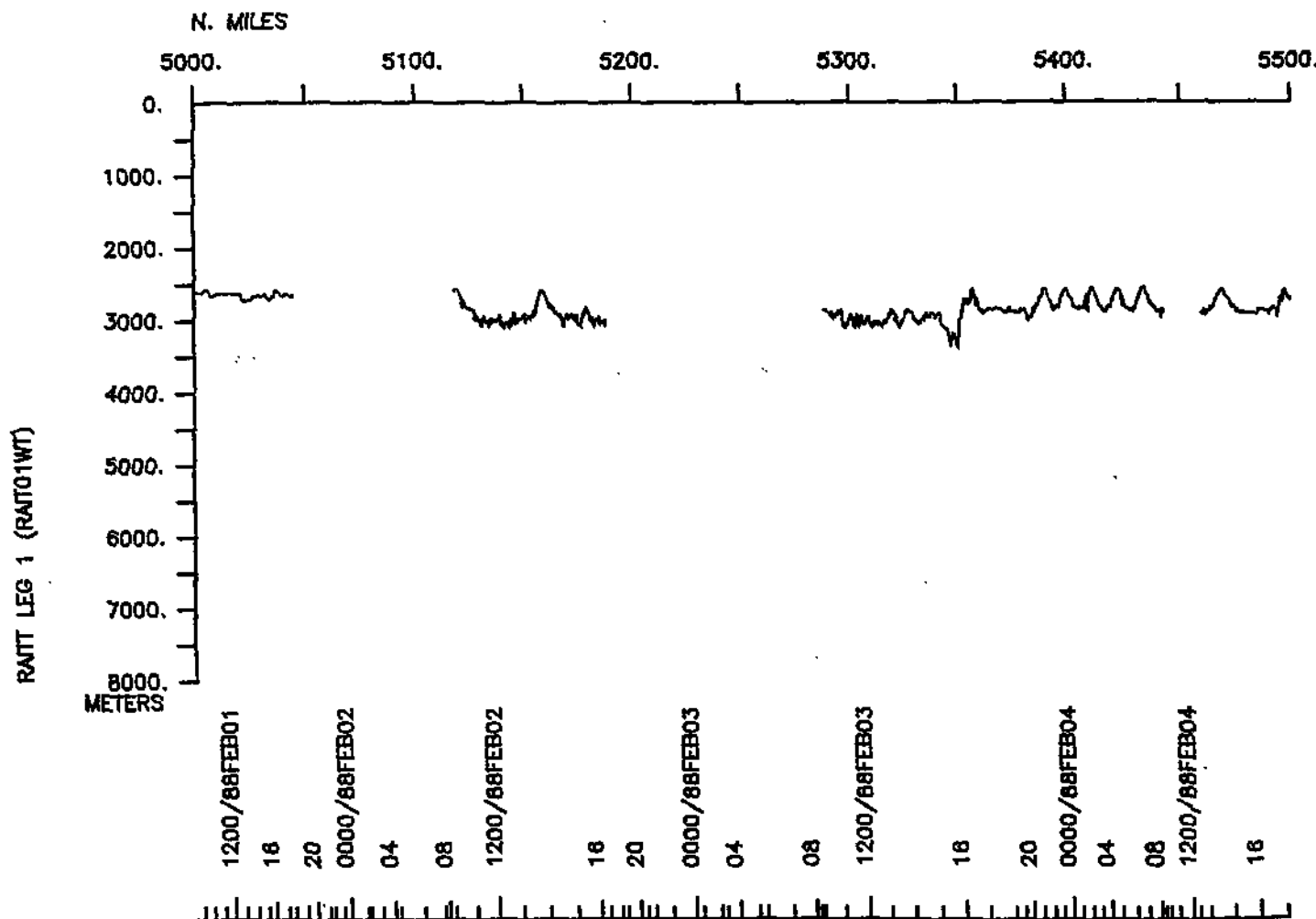
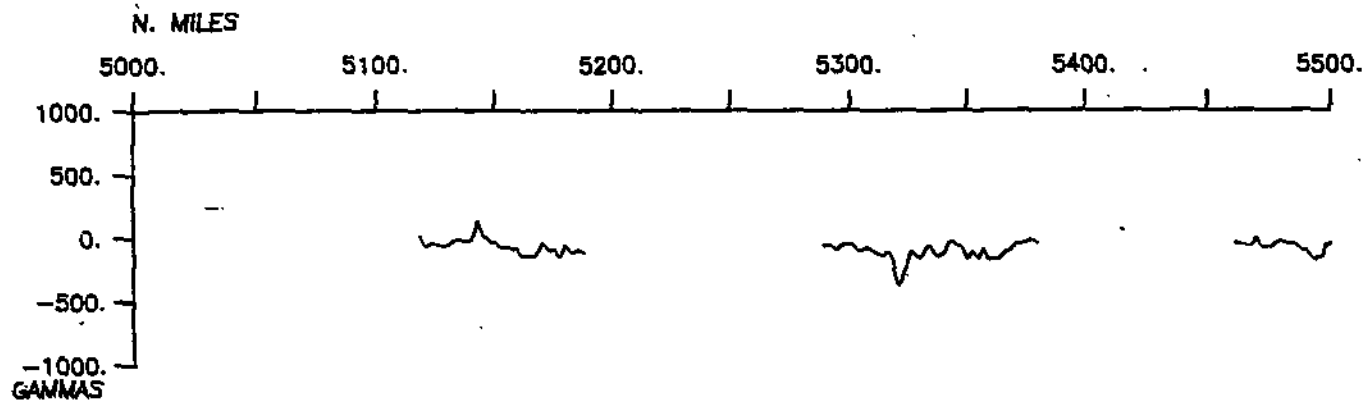


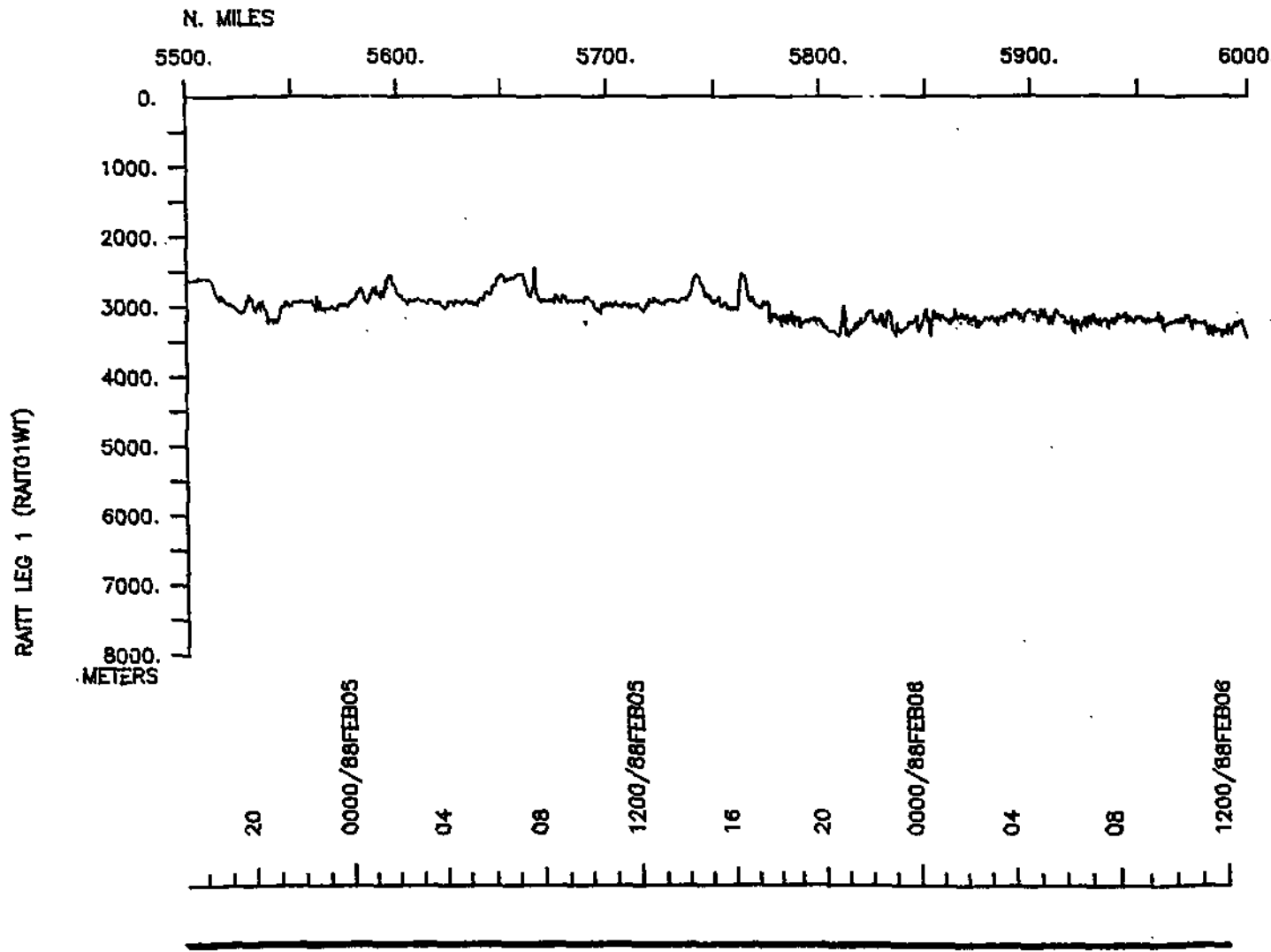
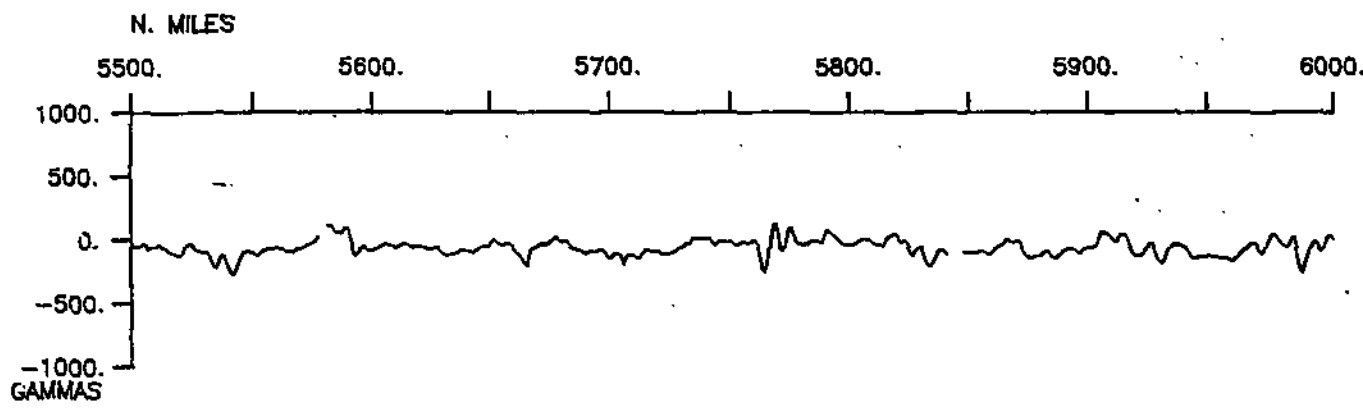


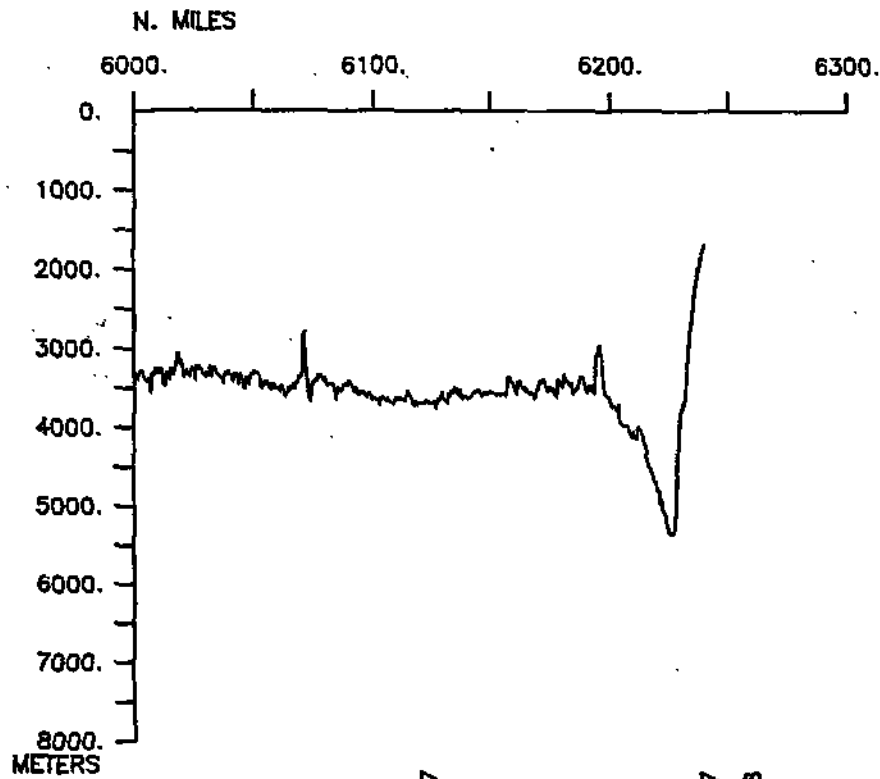
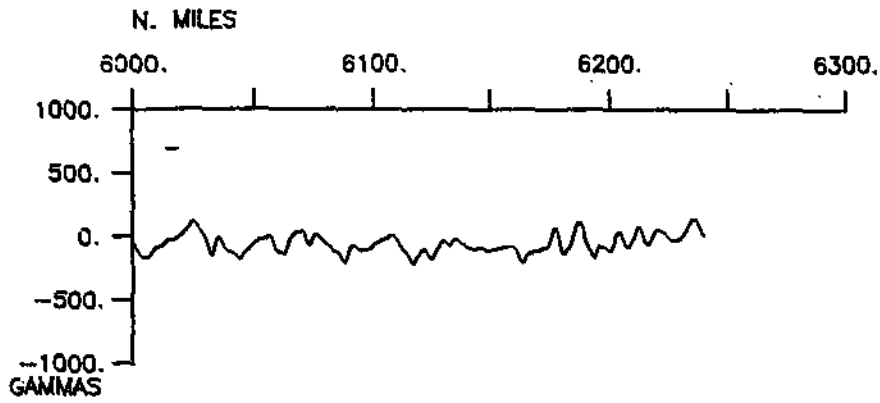




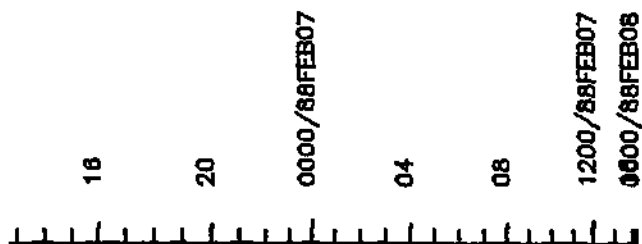








RAIT LEG 1 (RAIT01WT)



S.I.O. SAMPLE INDEX

(Issued October 1988)

RAITT EXPEDITION

Leg 1

=====

R/V T. Washington

San Diego, Calif. (9 January 1988)
to
Acapulco, Mexico (7 February 1988)

Chief Scientist - M. Purdy

Woods Hole Oceanographic Institution

The Sample Index is a first level interdisciplinary listing of time, position, sample identification and disposition of all samples, records and measurements collected on this cruise leg. The index data are encoded at sea by the resident marine technician and processed on shore by the S.I.O. Geological Data Center shortly after the completion of the cruise leg.

Positions are interpolated on the basis of sample time by comparison to a single, edited navigation file. Samples beginning at one time and position and ending at another are entered on two consecutive lines. Disposition and sample type are represented by three and four character codes to permit further computer searches on these parameters. (Listings defining these codes are available from the Geological Data Center.)

GDC Cruise I.D.# 237

**** PORTS ***

0243 090188	LGPT B SAN DIEGO, CALIF.	32-43 N 117-11 W	FRAIT01WT
1400 070288	LGPT E ACAPULCO, MEXICO	16-51 N 99-56 W	FRAIT01WT
1736 090188	LGSS B SEAL BEACH, CALIF.	33-436N 118-058W	sRAIT01WT
2216 090188	LGSS E SEAL BEACH, CALIF.	33-436N 118-058W	sRAIT01WT

****PERSONNEL****

NAME	***TITLE***	***AFFILIATION***	**CRID**
PECS WHOI PURDY, M.	CHIEF SCIENTIST	WOODS HOLE OCEAN.INST.	RAIT01WT
PERT STS WILSON, R.	RESIDENT TECH	SCRIPPS INSTITUTION	RAIT01WT
PECT STS MOE, R.	COMPUTER TECH	SCRIPPS INSTITUTION	RAIT01WT
PEAT STS CRAMPTON, P.	AIRGUN TECH	SCRIPPS INSTITUTION	RAIT01WT
PEBE STS HYLAS, T.	SEABEAM TECH	SCRIPPS INSTITUTION	RAIT01WT
PEBO STS SMITH, W.	SEABEAM OPERATOR	SCRIPPS INSTITUTION	RAIT01WT
PESP WHOI BRODA, J.	RESEARCH ASST.	WOODS HOLE OCEAN.INST.	RAIT01WT
PEST WHOI KNOG, L.	STUDENT	WOODS HOLE OCEAN.INST.	RAIT01WT
PEST WHOI LEE, S.	STUDENT	WOODS HOLE OCEAN.INST.	RAIT01WT
PEST WHOI PEAL, K.	RESEARCH SPECIL.	WOODS HOLE OCEAN.INST.	RAIT01WT
PESP MIT TOOMEY, D.	POST DOC	MASS.INST.OF TECH.	RAIT01WT
PESP MIT SOLOMON, S.	PROFESSOR	MASS.INST.OF TECH.	RAIT01WT
PEST MIT WILCOCK, W.	STUDENT	MASS.INST.OF TECH.	RAIT01WT
PESP WHOI WOODING, B.	RESEARCH ASST.	WOODS HOLE OCEAN.INST.	RAIT01WT

****NOTES****

#AN 'X' IN THE (B)EGIN/(E)ND COLUMN FOLLOWING THE SAMPLE CODE INDICATES NO
 #SAMPLE OR DATA RECOVERED. A 'C' INDICATES CONTINUATION OF DATA COLLECTION
 #FROM BEFORE THE BEGINNING OR AFTER THE END OF A PARTICULAR LEG. (MOORED
 #BOTTOM INSTRUMENTS, FOR EXAMPLE.) THE NUMBER APPEARING IN THE COLUMNS
 #BETWEEN THE SAMPLE IDENTIFIER AND THE DISPOSITION CODE, FOR MANY SAMPLE
 #ENTRIES, IS THE WATER DEPTH IN CORRECTED METERS. POSITIONS ARE IN TENTHS
 #OF MINUTES.

#GMT #TIME	DMMYY DATE	LOC TIME	T Z	SAMP CODE	SAMPLE IDENTIFIER	DISP CODE	LAT.	LONG.	CRUISE LEG-SHIP
---------------	---------------	-------------	--------	--------------	----------------------	--------------	------	-------	--------------------

***UNDERWAY DATA CURATOR - S. M. SMITH EXT. 42752

LOG BOOKS

1630	100188			LBUW B	UNDERWAY WATCH LOG	GDC	30-240N	116-538W	sRAIT01WT
1100	070288			LBUW E	UNDERWAY WATCH LOG	GDC	16-293N	100-037W	sRAIT01WT

*** ECHO SOUNDER RECORDS - 12 KHZ SEA BEAM MONITOR ***

1640	100188			MBRM B SB	EPC MONITOR R01	GDC	30-230N	116-535W	sRAIT01WT
2247	140188			MBRM E SB	EPC MONITOR R01	GDC	15-088N	108-065W	sRAIT01WT
2256	140188			MBRM B SB	EPC MONITOR R02	GDC	15-076N	108-058W	sRAIT01WT
2145	180188			MBRM E SB	EPC MONITOR R02	GDC	9-517N	104-054W	sRAIT01WT
2150	180188			MBRM B SB	EPC MONITOR R03	GDC	9-526N	104-054W	sRAIT01WT
830	220188			MBRM E SB	EPC MONITOR R03	GDC	9-430N	103-224W	sRAIT01WT
1910	220188			MBRM B SB	EPC MONITOR R04	GDC	9-440N	103-152W	sRAIT01WT
0007	270188			MBRM E SB	EPC MONITOR R04	GDC	9-227N	104-032W	sRAIT01WT
0020	270188			MBRM B SB	EPC MONITOR R05	GDC	9-204N	104-032W	sRAIT01WT
1755	300188			MBRM E SB	EPC MONITOR R05	GDC	9-395N	104-045W	sRAIT01WT
1759	300188			MBRM B SB	EPC MONITOR R06	GDC	9-395N	104-048W	sRAIT01WT
0154	050288			MBRM E SB	EPC MONITOR R06	GDC	9-530N	104-132W	sRAIT01WT
0205	050288			MBRM B SB	EPC MONITOR R07	GDC	9-530N	104-111W	sRAIT01WT
1116	070288			MBRM E SB	EPC MONITOR R07	GDC	16-314N	100-029W	sRAIT01WT

*** MAGNETIC (EARTH TOTAL FIELD) RECORDS ***

1645	100188			MGRA B	MAGNETICS R01	GDC	30-222N	116-531W	sRAIT01WT
0310	160188			MGRA E	MAGNETICS R01	GDC	10-323N	105-127W	sRAIT01WT
0316	160188			MGRA B	MAGNETICS R02	GDC	10-314N	105-121W	sRAIT01WT
1726	060288			MGRA E	MAGNETICS R02	GDC	13-455N	101-275W	sRAIT01WT
1732	060288			MGRA B	MAGNETICS R03	GDC	13-465N	101-269W	sRAIT01WT
0000	070288			MGRA E	MAGNETICS R03	GDC	14-515N	100-546W	sRAIT01WT

GRAVITY COMPUTER LOGGED

#GMT #TIME	DDMMYY DATE	LOC TIME	T Z	SAMP CODE	SAMPLE IDENTIFIER	DISP CODE	LAT.	LONG.	CRUISE LEG-SHIP
*** SEISMIC REFLECTION RECORDS ***									
2005	030288			SPRF B	AIRGUN R01	GDC	9-288N	104-090W	sRAIT01WT
0745	040288			SPRF E	AIRGUN R01	GDC	9-359N	104-197W	sRAIT01WT
2005	030288			SPRF B	AIRGUN R02	GDC	9-288N	104-090W	sRAIT01WT
0745	040288			SPRF E	AIRGUN R02	GDC	9-359N	104-197W	sRAIT01WT
*** SEABEAM SWATH BOOKS ***									
1631	100188			MBSB B	SB ARC.SWATH BK 01	GDC	30-239N	116-538W	sRAIT01WT
1940	110188			MBSB E	SB ARC.SWATH BK 01	GDC	25-327N	114-368W	sRAIT01WT
1940	110188			MBSB B	SB ARC.SWATH BK 02	GDC	25-327N	114-368W	sRAIT01WT
0132	130188			MBSB E	SB ARC.SWATH BK 02	GDC	20-361N	111-358W	sRAIT01WT
0139	130188			MBSB B	SB ARC.SWATH BK 03	GDC	20-349N	111-351W	sRAIT01WT
1756	140188			MBSB E	SB ARC.SWATH BK 03	GDC	15-381N	108-241W	sRAIT01WT
1756	140188			MBSB B	SB ARC.SWATH BK 04	GDC	15-381N	108-241W	sRAIT01WT
0405	160188			MBSB E	SB ARC.SWATH BK 04	GDC	10-240N	105-066W	sRAIT01WT
0410	160188			MBSB B	SB ARC.SWATH BK 05	GDC	10-232N	105-061W	sRAIT01WT
1823	170188			MBSB E	SB ARC.SWATH BK 05	GDC	9-293N	104-135W	sRAIT01WT
1823	170188			MBSB B	SB ARC.SWATH BK 06	GDC	9-293N	104-135W	sRAIT01WT
1512	190188			MBSB E	SB ARC.SWATH BK 06	GDC	9-399N	104-134W	sRAIT01WT
1512	190188			MBSB B	SB ARC.SWATH BK 07	GDC	9-399N	104-134W	sRAIT01WT
0258	210188			MBSB E	SB ARC.SWATH BK 07	GDC	9-407N	104-210W	sRAIT01WT
0259	210188			MBSB B	SB ARC.SWATH BK 08	GDC	9-405N	104-210W	sRAIT01WT
1302	220188			MBSB E	SB ARC.SWATH BK 08	GDC	9-340N	104-217W	sRAIT01WT
1303	220188			MBSB B	SB ARC.SWATH BK 09	GDC	9-340N	104-215W	sRAIT01WT
2311	230188			MBSB E	SB ARC.SWATH BK 09	GDC	9-448N	104-137W	sRAIT01WT
2312	230188			MBSB B	SB ARC.SWATH BK 10	GDC	9-446N	104-137W	sRAIT01WT
0008	260188			MBSB E	SB ARC.SWATH BK 10	GDC	9-467N	104-277W	sRAIT01WT
0009	260188			MBSB B	SB ARC.SWATH BK 11	GDC	9-465N	104-277W	sRAIT01WT
0232	280188			MBSB E	SB ARC.SWATH BK 11	GDC	9-161N	104-170W	sRAIT01WT
0232	280188			MBSB B	SB ARC.SWATH BK 12	GDC	9-161N	104-170W	sRAIT01WT
1001	300188			MBSB E	SB ARC.SWATH BK 12	GDC	9-314N	104-121W	sRAIT01WT

#GMT #TIME	DDMMYY DATE	LOC TIME	T Z	SAMP CODE	SAMPLE IDENTIFIER			DISP CODE	LAT.	LONG.	CRUISE LEG-SHIP
1001	300188			MBSB B	SB	ARC.SWATH	BK 13	GDC	9-314N	104-121W	sRAIT01WT
1528	020288			MBSB E	SB	ARC.SWATH	BK 13	GDC	9-177N	104-337W	sRAIT01WT
1529	020288			MBSB B	SB	ARC.SWATH	BK 14	GDC	9-178N	104-336W	sRAIT01WT
0649	050288			MBSB E	SB	ARC.SWATH	BK 14	GDC	9-480N	104-174W	sRAIT01WT
0649	050288			MBSB B	SB	ARC.SWATH	BK 15	GDC	9-480N	104-174W	sRAIT01WT
1716	060288			MBSB E	SB	ARC.SWATH	BK 15	GDC	13-438N	101-285W	sRAIT01WT
1716	060288			MBSB B	SB	ARC.SWATH	BK 16	GDC	13-438N	101-285W	sRAIT01WT
1116	070288			MBSB E	SB	ARC.SWATH	BK 16	GDC	16-314N	100-029W	sRAIT01WT
1631	100188			MBSB B	SB	SUR.SWATH	BK 01	WHO	30-239N	116-538W	sRAIT01WT
1940	110188			MBSB E	SB	SUR.SWATH	BK 01	WHO	25-327N	114-368W	sRAIT01WT
1940	110188			MBSB B	SB	SUR.SWATH	BK 02	WHO	25-327N	114-368W	sRAIT01WT
0138	130188			MBSB E	SB	SUR.SWATH	BK 02	WHO	20-351N	111-352W	sRAIT01WT
0139	130188			MBSB B	SB	SUR.SWATH	BK 03	WHO	20-349N	111-351W	sRAIT01WT
1756	140188			MBSB E	SB	SUR.SWATH	BK 03	WHO	15-381N	108-241W	sRAIT01WT
1756	140188			MBSB B	SB	SUR.SWATH	BK 04	WHO	15-381N	108-241W	sRAIT01WT
0405	160188			MBSB E	SB	SUR.SWATH	BK 04	WHO	10-240N	105-066W	sRAIT01WT
0410	160188			MBSB B	SB	SUR.SWATH	BK 05	WHO	10-232N	105-061W	sRAIT01WT
1823	170188			MBSB E	SB	SUR.SWATH	BK 05	WHO	9-293N	104-135W	sRAIT01WT
1823	170188			MBSB B	SB	SUR.SWATH	BK 06	WHO	9-293N	104-135W	sRAIT01WT
1512	190188			MBSB E	SB	SUR.SWATH	BK 06	WHO	9-399N	104-134W	sRAIT01WT
1512	190188			MBSB B	SB	SUR.SWATH	BK 07	WHO	9-399N	104-134W	sRAIT01WT
0255	210188			MBSB E	SB	SUR.SWATH	BK 07	WHO	9-413N	104-209W	sRAIT01WT
0258	210188			MBSB B	SB	SUR.SWATH	BK 08	WHO	9-407N	104-210W	sRAIT01WT
1504	220188			MBSB E	SB	SUR.SWATH	BK 08	WHO	9-368N	103-597W	sRAIT01WT
1504	220188			MBSB B	SB	SUR.SWATH	BK 09	WHO	9-368N	103-597W	sRAIT01WT
2312	230188			MBSB E	SB	SUR.SWATH	BK 09	WHO	9-446N	104-137W	sRAIT01WT
2312	230188			MBSB B	SB	SUR.SWATH	BK 10	WHO	9-446N	104-137W	sRAIT01WT
0003	260188			MBSB E	SB	SUR.SWATH	BK 10	WHO	9-476N	104-276W	sRAIT01WT

#GMT #TIME	DDMMYY DATE	LOC TIME	T Z	SAMP CODE	SAMPLE IDENTIFIER	DISP CODE	LAT.	LONG.	CRUISE LEG-SHIP
0003	260188			MBSB B	SB SUR.SWATH BK 11	WHO	9-476N	104-276W	sRAIT01WT
0232	280188			MBSB E	SB SUR.SWATH BK 11	WHO	9-161N	104-170W	sRAIT01WT
0232	280188			MBSB B	SB SUR.SWATH BK 12	WHO	9-161N	104-170W	sRAIT01WT
1004	300188			MBSM E	SB SUR.SWATH BK 12	GDC	9-312N	104-120W	sRAIT01WT
1004	300188			MBSB B	SB SUR.SWATH BK 13	WHO	9-312N	104-120W	sRAIT01WT
1527	020288			MBSB E	SB SUR.SWATH BK 13	WHO	9-176N	104-339W	sRAIT01WT
1527	020288			MBSB B	SB SUR.SWATH BK 14	WHO	9-176N	104-339W	sRAIT01WT
0648	050288			MBSB E	SB SUR.SWATH BK 14	WHO	9-478N	104-174W	sRAIT01WT
0649	050288			MBSB B	SB SUR.SWATH BK 15	WHO	9-480N	104-174W	sRAIT01WT
1720	060288			MBSB E	SB SUR.SWATH BK 15	WHO	13-445N	101-281W	sRAIT01WT
1720	060288			MBSB B	SB SUR.SWATH BK 16	WHO	13-445N	101-281W	sRAIT01WT
1116	070288			MBSB E	SB SUR.SWATH BK 16	WHO	16-314N	100-029W	sRAIT01WT
*** CURRENT METER REMOTE TRACKING DRIFTER ***									
0002	150188			CMRT B	ALACE 01	SIO	14-592N	108-011W	sRAIT01WT
1400	070288			CMRT C	ALACE 01	SIO	16-510N	99-560W	fRAIT01WT
*** OCEAN BOTTOM SEISMIC BUOYS ***									
0717	240188			SBOB B	CW1	WHO	9-422N	104-273W	sRAIT01WT
1304	240188			SBOB E	CW1	WHO	9-182N	104-238W	sRAIT01WT
1428	240188			SBOB B	DP1	WHO	9-278N	104-190W	sRAIT01WT
1621	240188			SBOB E	DP1	WHO	16-507N	99-547W	sRAIT01WT
0711	250188			SBOB B	M1	WHO	9-351N	104-202W	sRAIT01WT
0838	250188			SBOB E	M1	WHO	9-290N	104-194W	sRAIT01WT
0913	250188			SBOB B	M2	WHO	9-308N	104-197W	sRAIT01WT
1021	250188			SBOB E	M2	WHO	9-354N	104-196W	sRAIT01WT
1049	250188			SBOB B	DP2	WHO	9-354N	104-185W	sRAIT01WT
1252	250188			SBOB E	DP2	WHO	9-269N	104-185W	sRAIT01WT
1303	250188			SBOB B	DP3	WHO	9-273N	104-180W	sRAIT01WT
1500	250188			SBOB E	DP3	WHO	9-356N	104-179W	sRAIT01WT

#GMT #TIME #	DDMMYY DATE	LOC TIME Z	T	SAMP CODE	SAMPLE IDENTIFIER	DISP CODE	LAT.	LONG.	CRUISE LEG-SHIP
1510	250188			SBOB B	DP4	WHO	9-354N	104-175W	sRAIT01WT
1709	250188			SBOB E	DP4	WHO	9-277N	104-176W	sRAIT01WT
0705	260188			SBOB B	DP16	WHO	9-282N	104-109W	sRAIT01WT
0906	260188			SBOB E	DP16	WHO	9-364N	104-107W	sRAIT01WT
0926	260188			SBOB B	DP17	WHO	9-362N	104-104W	sRAIT01WT
1129	260188			SBOB E	DP17	WHO	9-282N	104-104W	sRAIT01WT
1141	260188			SBOB B	M5	WHO	9-284N	104-101W	sRAIT01WT
1240	260188			SBOB E	M5	WHO	9-322N	104-097W	sRAIT01WT
1428	260188			SBOB B	CW2	WHO	9-221N	104-024W	sRAIT01WT
2005	260188			SBOB E	CW2	WHO	9-459N	104-055W	sRAIT01WT
0708	270188			SBOB B	DP11	WHO	9-360N	104-137W	sRAIT01WT
0904	270188			SBOB E	DP11	WHO	9-277N	104-136W	sRAIT01WT
0922	270188			SBOB B	DP10	WHO	9-283N	104-142W	sRAIT01WT
1107	270188			SBOB E	DP10	WHO	9-361N	104-141W	sRAIT01WT
1121	270188			SBOB B	DP9	WHO	9-360N	104-149W	sRAIT01WT
1324	270188			SBOB E	DP9	WHO	9-277N	104-154W	sRAIT01WT
1500	270188			SBOB B	MXS	WHO	9-267N	104-146W	sRAIT01WT
703	270188			SBOB B	MXS	WHO	9-202N	104-123W	sRAIT01WT
0824	280188			SBOB B	DP8	WHO	9-276N	104-153W	sRAIT01WT
1022	280188			SBOB E	DP8	WHO	9-364N	104-151W	sRAIT01WT
1059	280188			SBOB B	DP12	WHO	9-355N	104-130W	sRAIT01WT
1243	280188			SBOB E	DP12	WHO	9-277N	104-131W	sRAIT01WT
1257	280188			SBOB B	DP13	WHO	9-280N	104-125W	sRAIT01WT
1453	280188			SBOB E	DP13	WHO	9-369N	104-130W	sRAIT01WT
1610	280188			SBOB B	MXN	WHO	9-369N	104-164W	sRAIT01WT
1813	280188			SBOB E	MXN	WHO	9-466N	104-165W	sRAIT01WT
0646	290188			SBOB B	DP5	WHO	9-356N	104-170W	sRAIT01WT
0837	290188			SBOB E	DP5	WHO	9-269N	104-167W	sRAIT01WT
0859	290188			SBOB B	DP6	WHO	9-274N	104-164W	sRAIT01WT
1055	290188			SBOB E	DP6	WHO	9-358N	104-163W	sRAIT01WT
1123	290188			SBOB B	DP7	WHO	9-346N	104-158W	sRAIT01WT
1304	290188			SBOB E	DP7	WHO	9-274N	104-157W	sRAIT01WT
1338	290188			SBOB B	M3	WHO	9-286N	104-143W	sRAIT01WT
1433	290188			SBOB E	M3	WHO	9-345N	104-151W	sRAIT01WT
0644	300188			SBOB B	DP15	WHO	9-282N	104-114W	sRAIT01WT
0832	300188			SBOB E	DP15	WHO	9-364N	104-113W	sRAIT01WT
0855	300188			SBOB B	DP14	WHO	9-362N	104-121W	sRAIT01WT
1049	300188			SBOB E	DP14	WHO	9-278N	104-119W	sRAIT01WT
1128	300188			SBOB B	S10	WHO	9-295N	104-124W	sRAIT01WT
1138	300188			SBOB E	S10	WHO	9-281N	104-123W	sRAIT01WT
1149	300188			SBOB B	S9	WHO	9-288N	104-129W	sRAIT01WT
1230	300188			SBOB E	S9	WHO	9-344N	104-128W	sRAIT01WT
329	300188			SBOB B	S8	WHO	9-344N	104-135W	sRAIT01WT
1409	300188			SBOB E	S8	WHO	9-290N	104-134W	sRAIT01WT

#GMT #TIME	DDMMYY DATE	LOC TIME	T Z	SAMP CODE	SAMPLE IDENTIFIER	DISP CODE	LAT.	LONG.	CRUISE LEG-SHIP
1418	300188			SBOB B	S7	WHO	9-296N	104-138W	sRAIT01WT
1457	300188			SBOB E	S7	WHO	9-349N	104-138W	sRAIT01WT
0635	310188			SBOB B	S1	WHO	9-332N	104-171W	sRAIT01WT
0652	310188			SBOB E	S1	WHO	9-354N	104-171W	sRAIT01WT
0705	310188			SBOB B	S2	WHO	9-349N	104-166W	sRAIT01WT
0757	310188			SBOB E	S2	WHO	9-281N	104-167W	sRAIT01WT
0815	310188			SBOB B	S3	WHO	9-277N	104-161W	sRAIT01WT
0915	310188			SBOB E	S3	WHO	9-356N	104-161W	sRAIT01WT
0930	310188			SBOB B	D1	WHO	9-356N	104-159W	sRAIT01WT
0946	310188			SBOB E	D1	WHO	9-344N	104-158W	sRAIT01WT
0953	310188			SBOB B	S4	WHO	9-338N	104-156W	sRAIT01WT
1036	310188			SBOB E	S4	WHO	9-282N	104-156W	sRAIT01WT
1052	310188			SBOB B	S5	WHO	9-279N	104-151W	sRAIT01WT
1102	310188			SBOB E	S5	WHO	9-292N	104-151W	sRAIT01WT
1127	310188			SBOB B	S6	WHO	9-334N	104-145W	sRAIT01WT
1140	310188			SBOB E	S6	WHO	9-359N	104-144W	sRAIT01WT
1152	310188			SBOB B	D2	WHO	9-349N	104-136W	sRAIT01WT
1419	310188			SBOB E	D2	WHO	9-213N	104-023W	sRAIT01

*** SEISMIC BOUY OCEAN FLOOR HYDROPHONE ***

0843	170188			SBOH B	DIGITAL OBH 13	WHO	9-343N	104-150W	sRAIT01WT
1148	180188			SBOH E	DIGITAL OBH 13	WHO	9-343N	104-152W	sRAIT01WT
1052	170188			SBOH B	DIGITAL OBH 15	WHO	9-387N	104-048W	sRAIT01WT
0950	180188			SBOH E	DIGITAL OBH 15	WHO	9-385N	104-053W	sRAIT01WT
0953	200188			SBOH B	DIGITAL OBH 15	WHO	9-367N	104-105W	sRAIT01WT
0215	020288			SBOH E	DIGITAL OBH 15	WHO	9-373N	104-111W	sRAIT01WT
1153	200188			SBOH B	DIGITAL OBH 13	WHO	9-413N	104-051W	sRAIT01WT
0111	030288			SBOH E	DIGITAL OBH 13	WHO	9-413N	104-057W	sRAIT01WT
0824	200188			SBOH B	MIT OBH 1	MIT	9-360N	104-154W	sRAIT01WT
0945	020288			SBOH E	MIT OBH 1	MIT	9-363N	104-160W	sRAIT01WT
0823	210188			SBOH B	MIT OBH 3	MIT	9-353N	104-202W	sRAIT01WT
0956	030288			SBOH E	MIT OBH 3	MIT	9-354N	104-199W	sRAIT01WT
0950	210188			SBOH B	DIGITAL OBH 10	WHO	9-384N	104-267W	sRAIT01WT
2211	020288			SBOH E	DIGITAL OBH 10	WHO	9-379N	104-269W	sRAIT01WT
0803	220188			SBOH B	DIGITAL OBH 12	WHO	9-223N	104-245W	sRAIT01WT
1724	020288			SBOH E	DIGITAL OBH 12	WHO	9-219N	104-241W	sRAIT01WT
0736	210188			SBOH B	ANALOG OBH 1	WHO	9-354N	104-203W	sRAIT01WT
2046	020288			SBOH E	ANALOG OBH 1	WHO	9-329N	104-261W	sRAIT01WT
0901	230188			SBOH B	ANALOG OBH 2	WHO	9-276N	104-253W	sRAIT01WT
1914	020288			SBOH E	ANALOG OBH 2	WHO	9-278N	104-251W	sRAIT01WT
1107	230188			SBOH B	ANALOG OBH 3	WHO	9-319N	104-146W	sRAIT01
1820	010288			SBOH E	ANALOG OBH 3	WHO	9-318N	104-150W	sRAIT01WT
1002	230188			SBOH B	ANALOG OBH 4	WHO	9-268N	104-190W	sRAIT01WT
2018	010288			SBOH E	ANALOG OBH 4	WHO	9-268N	104-190W	sRAIT01WT
1207	230188			SBOH B	ANALOG OBH 5	WHO	9-275N	104-142W	sRAIT01WT
2157	010288			SBOH E	ANALOG OBH 5	WHO	9-276N	104-139W	sRAIT01WT

#GMT #TIME #	DDMMYY DATE	LOC TIME Z	T	SAMP CODE	SAMPLE IDENTIFIER	DISP CODE	LAT.	LONG.	CRUISE LEG-SHIP
1307	230188			SBOH B	ANALOG OBH 6	WHO	9-282N	104-092W	sRAIT01WT
2341	010288			SBOH E	ANALOG OBH 6	WHO	9-280N	104-100W	sRAIT01WT
1408	230188			SBOH B	ANALOG OBH 8	WHO	9-307N	104-036W	sRAIT01WT
0445	020288			SBOH E	ANALOG OBH 8	WHO	9-309N	104-036W	sRAIT01WT
1509	230188			SBOH B	ANALOG OBH 7	WHO	9-360N	104-043W	sRAIT01WT
0324	030288			SBOH E	ANALOG OBH 7	WHO	9-356N	104-049W	sRAIT01WT
0855	040288			SBOH B	DIGITAL OBH 14	WHO	9-359N	104-225W	sRAIT01WT
1325	040288			SBOH E	DIGITAL OBH 14	WHO	9-360N	104-228W	sRAIT01WT

*** EXPENDABLE BATHYTHERMOGRAPHS ***

0243	090188			BTXP B	NR XBT = 67	GDC	32-401N	117-136W	sRAIT01WT
1400	070288			BTXP E	NR XBT = 67	GDC	16-510N	99-541W	sRAIT01WT

*** THERMOGRAPH RECORDS ***

0243	090188			TGRC B	THERMOGRAPHS 29	GDC	32-401N	117-136W	sRAIT01WT
1400	070288			TGRC E	THERMOGRAPHS 29	GDC	16-510N	99-541W	sRAIT01WT

*** END SAMPLE INDEX