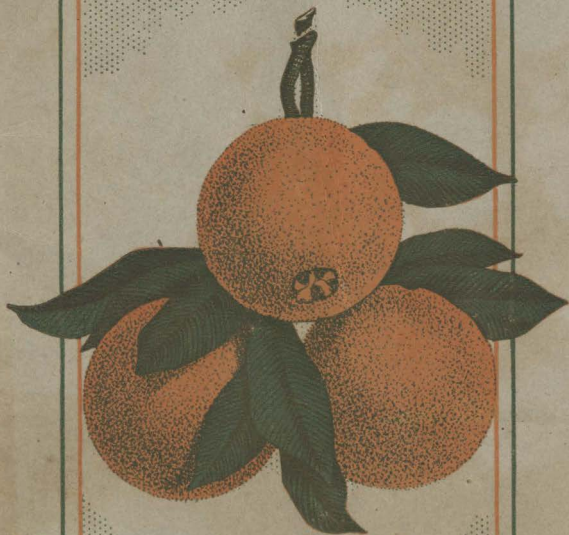


SANTA ANA



CALIFORNIA

Santa Ana

SANTA ANA is the county seat of Orange County, the gem of Southern California. Its population is between 9000 and 10,000.

Location

Near the center of the county, and about nine miles from the Pacific Ocean and six miles from the foothills on the northeast, in the heart of the Santa Ana Valley, and surrounded on all sides by a country, the richness of which both in soil and variety of products is unsurpassed anywhere and equaled in but few if any places.

History

Some one has written of it and the material things constituting its substantial business basis under the title "From a Mustard Patch to the Marketing of Millions." Such progress is interesting history. The quoted title is true. Prior to the year 1870 this (Santa Ana) valley was a waste or plain of wild mustard and cactus; when, previous several years even to that date it was decided by a pioneer (now living W. H. Spurgeon), that a



CITY HALL AND CHAMBER OF COMMERCE

town should be built on the present location of the city. It was surveyed in 1870 and given its present name, and was then in Los Angeles County. Incorporated in 1886, and in 1889 about 780 square miles of territory was cut off from Los Angeles County and organized under the name of Orange County, since which time Santa Ana has been the County seat and commercial center of the most attractive and prosperous section of Southern California, in proportion to its area.

The Present and Future

It is not, however this city's past with which this article is chiefly con-

cerned, interesting though it is. The bountiful present and assured prosperity of the future is what will at all times appeal to the resident and attract the homeseeker. Wherever you live in any part of the United States, what is first in your mind when you determine to seek a home in a better part of our country?

The answer is met in the educational, moral, social, economic and climatic conditions.

Educational

This year, more than \$75,000 has been expended in the betterment of our school facilities. The city schools



PUBLIC LIBRARY



HIGH SCHOOL

before this expenditure, were highly accredited, and with the improvement thus made, and the excellent corps of teachers employed (sixty-two this year in the city schools) the highest standard of efficiency is maintained. There are kindergartens, four grammar schools, with two new ones under construction, domestic science and training, High School with a twenty thousand dollar addition under construction, graduation from the High School being qualification for entering college.

Moral and Social

In this respect attention is called to

the fact that nowhere can a better moral atmosphere be found than exists among the people of this city and county. In point of things that detract, Santa Ana has neither slums, saloons nor foreign quarter. The population is largely cosmopolitan, and is of that better element that has helped to mold the social and moral condition to the present excellent status. There is quite an attraction in the society of the people from the different States and when they meet through their organizations, in their annual picnics and reunions, through reminiscence and story they have the associa-



ONE OF OUR MANY CHURCHES



FOURTH ST. SANTA ANA.

tion of "back East." There are churches of many denominations and their buildings are large, attractive and substantial, with the best of cooperative spirit prevailing.

The city has a beautiful public library, containing many thousand volumes and with many hundred additions thereto each year. The appropriation from the city this year for maintenance and additions was over \$4,000.00 This is available to the citizens and school children of the city.

Other Advantages

There are fifty miles of cement sidewalks, four miles of asphalt pavement, complete sewer system, modern

Opera House, gas and electricity, a well equipped hospital, abundant supply of artesian water. three railroads, including electric line to Los Angeles, an efficient and paid fire department. Numerous fraternal organizations, two daily and two weekly newspapers, beautiful drives to the mountains and seashore.

Climatic

Average maximum temperature for four years, 99.

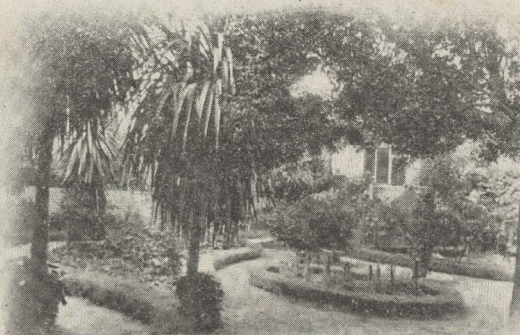
Average minimum temperature for four years, 30.5.

Mean temperature for 365 days, 62.

These figures ought to speak for



A SANTA ANA PARK



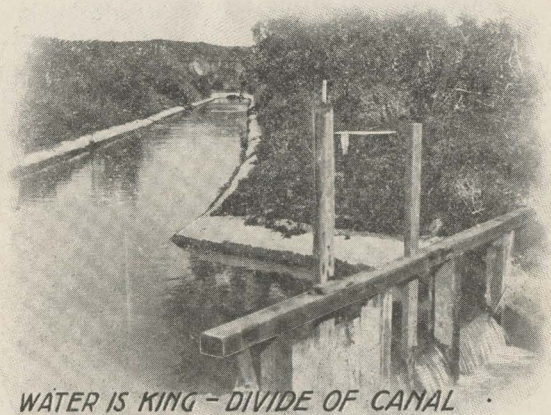
A BACK YARD

themselves.

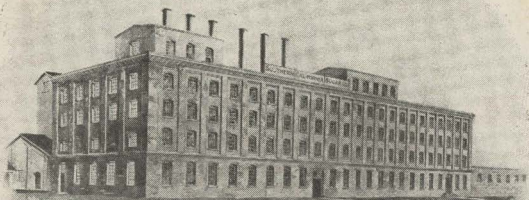
Santa Ana is just as pleasant in winter as summer. The coast breeze every day tempers the atmosphere to such an extent that really oppressive days in summer are very rare. We have practically three hundred and sixty-five fine days in the year. A case of sunstroke has never been known here. Every month in the year ripe fruit of some variety can be picked from the tree. The yards are decorated with beautiful flowers every day and green vegetables are grown in the county and are on the market each month in the year.

Economic

The substantial business basis of the town will be shown under this title. It is based upon the resources of the surrounding country. It has six banks of absolute stability. The county has a coast frontage of 40 miles, with a natural harbor, the development of which is now occupying the attention of the War Department, and with small cost can be made ready for the commercial advantages that will ensue upon the completion of the Panama Canal. Its exceptional advantages for a manufacturing center, together with many others, will be a still



WATER IS KING - DIVIDE OF CANAL



SANTA ANA SUGAR FACTORY

water harbor, for and within five miles of the city, already connected therewith by both steam and electric railways, giving the city transportation to Eastern markets both by rail and water. To get an accurate idea of the stability of the country take a drive. you can not estimate it properly from the train. It is a goodly land. The city has been free from any boom processes of growth. The building permits issued since the first of the year number 245, and the value of the buildings erected thereunder \$386,958.

The city represents the prosperity of its natural conditions and trade region as the statistics of Orange County show.

General Statistics

of Orange County

Area, square miles	780
No. of farms	4783
Real estate outside of cities	\$13,037,047
Improvement on same	3,540,262
Real estate inside cities ...	4,548,037
Improvement on same	3,487,395
Personal property	4,516,545
Money and solvent credits..	89,050
Railroad assessment	2,717,482

Total value all property..\$31,935,818

Irrigating ditches, miles	258
No. of acres irrigated	57,102
Cereal Products and Hay—	Value.
Wheat, 5100 acres	\$ 71,750
Barley, 35,025 acres	546,390
Oats, 4275 acres	49,590
Corn, 2540 acres	31,000
Aifalfa hay, 3620 acres	197,200
Grain hay, 28 200 acres	387,758

Fruits

No. of fruit trees, bearing, non-bearing.		
Apples	13,840	1,050
Apricots	169,315	26,940
Lemons	80,800	1,540
Orange	728,800	217,300
Peaches	37,000	12,550



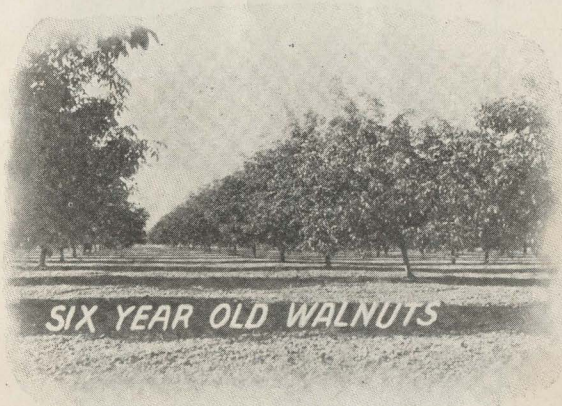
YOUNG ORANGE GROVE

Pear	5 250	500
Walnuts	147,380	98,320
Green Fruits and Vegetables—		Value.
Apples, 500,000 lbs.	\$	12,500
Apricots, 312,000 lbs.		3,120
Blackberries. 5266 crates ...		5,266
Cabbage, 15,930,000 lbs.		119,475
Celery, 211 carloads		535,059
Cauliflower, 14,100 crates ..		70,500
Lemons, 68,264 boxes		75,064
Onions, 886,500 lbs.		8,865
Oranges, 1,215,420 boxes		1,276 191
Peaches, 418,000 lbs.		62,760
Pears, 129,370 lbs.		1,293
Plums, 240,000 lbs.		4,800
Irish potatoes, 45,992 000 lbs.		450,912
Sweet potatoes, 6,087,000 lbs.		76,085

Strawberries, 20,000 crates..	22,000
Tomatoes, 1,088,000 lbs.	108,800
Beans, 295,000 lbs.	11,600
Peas, 172,000 lbs.	6,800
Persimmons, 100,000 lbs. ...	1,000

Dried Fruits and Vegetables— Value.	
Apricots, 2,820,000 lbs.	\$225,600
Beans, 285,000 sacks	800,000
Peanuts, 60,000 lbs.	2,400
Walnuts, 8,724,000 lbs.	872,400

Canned Fruits and Vegetables—Value.	
Nectarines, 6666 cases	\$ 6,666
Tomatoes, 33,333 cases	33,333
Taylor Cannery, 11,542 assort- ed cases	80,000



SIX YEAR OLD WALNUTS

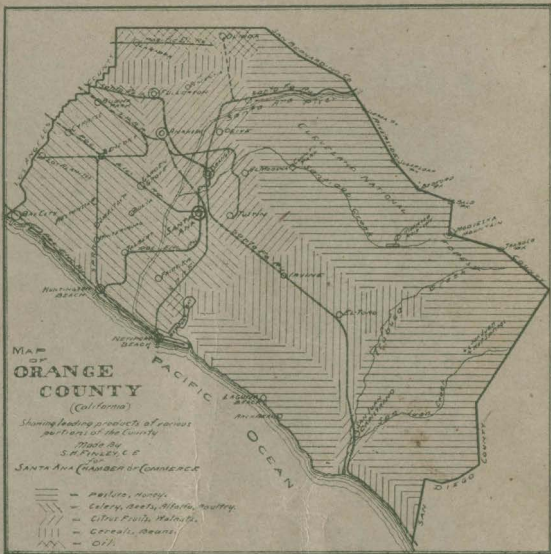


Orange County Celery Field and Artesian Well

Wines, Brandies, etc.—	Value.
Dry wines, 24,700 gallons	\$ 6,175
Sweet wines, 13,000 gallons	3,900
Beer, 9000 barrels	72,000
Brandy, 1500 gallons	750
Fish, all kinds—	Value.
589,510 lbs.	\$17,885
Dairy Industry—	Value.
Creameries, 1	\$63,220
Butter, creamery, 130 000 lbs.	39,000
Live Stock Industry—	Value.
Cattle, beef, 294 head	\$ 11,760
Dairy, thoroughbred, 5405 head	438,225
Stock cattle, 9520 head	190,400
Heifers, 464 head	6,960
Calves, 2200 head	11,000
Swine, 2200 head	22 000
Horses, thoroughbred, 38 head	5,700
Horses, standard bred, 90 head	20,200
Horses, common, 4525 head	678,700
Colts, 1520 head	93,200
Sheep, imported, etc., 1420 head	28 400
Sheep, common, 21,900 head	65,700
Lambs, 6100 head	6,100
Wool, 490,500 lbs.	13,565
Poultry and Eggs—	Value.
Chickens, 17,285 dozen	\$ 87,425
Ducks, 150 dozen	900
Geese, 160 dozen	3,200
Turkeys 240 dozen	4,800
Eggs, 2,419,900 dozen	725,970

Miscellaneous Products—	Value.
Bees, 9000 hives	\$ 27,000
Beeswax, 10,000 lbs.	3,000
Honey, 600,000 lbs.	30,000
Sugar beets, per ton \$5.66, per acre \$67.50, total in Co.	782,000
Finished product	1,770,000
Chili peppers, green, 600,000 lbs.	7,500
Chili peppers, dry, 150,000 lbs.	15,000
Bell peppers, 21 tons	10,500
Crude oil	5,913,000
Apricot kernels and pits	26,500

Manufactures—	Val. of Prod.
Machinery (1)	\$125,000
Brick (1)	20,000
Cigars (5)	37,000
Confectionery (3)	16,000
Flower mills (1)	392,000
Foundries and iron works (2)	215,000
Ice Plants (1)	12,184
Nurseries	392,100
Planing mills (5)	158,000
Artificial stone and pipe	7,000
Folding crates (1)	25,000
Wood box (1)	12,500
Olive oil	1 500
Cement pipe and tiling	77,365
Eucalyptus oil	1,800
Horse collar factory (1)	25,460



Write Secretary
Santa Ana Chamber of Commerce