

***Report and Index of
Underway Marine Geophysical Data***

Cook Expedition

Leg 15

(COOK15MV)

R/V Melville

(Issued February 2002)

Ports:

Apia, Western Samoa (1 November 2001)

to

Papeete, Tahiti (6 November 2001)

No Chief Scientist: Transit Leg

Computer Tech - Jim Charters

**Post-Cruise processing and report preparation by
Shipboard Technical Support Group,
Scripps Institution of Oceanography
La Jolla, CA 92093-0223**

NOTE: This is an index of underway geophysical data edited and processed after the completion of the cruise leg and is intended primarily for informal use within the institution. This document is not to be reproduced or distributed outside Scripps without prior approval of the chief scientist or the Shipboard Technical Support Group, Scripps Institution of Oceanography, La Jolla, California 92093-0223.

GDC Cruise ID# 295

**Report and Index of Navigation
and Underway Geophysical Data**

Processed by the Shipboard Technical Support Group
Scripps Institution of Oceanography

Contents:

Index Chart – gives track of cruise leg, dates, ports, and mileage of each type of data collected.

Track Charts– annotated with dates and hour ticks

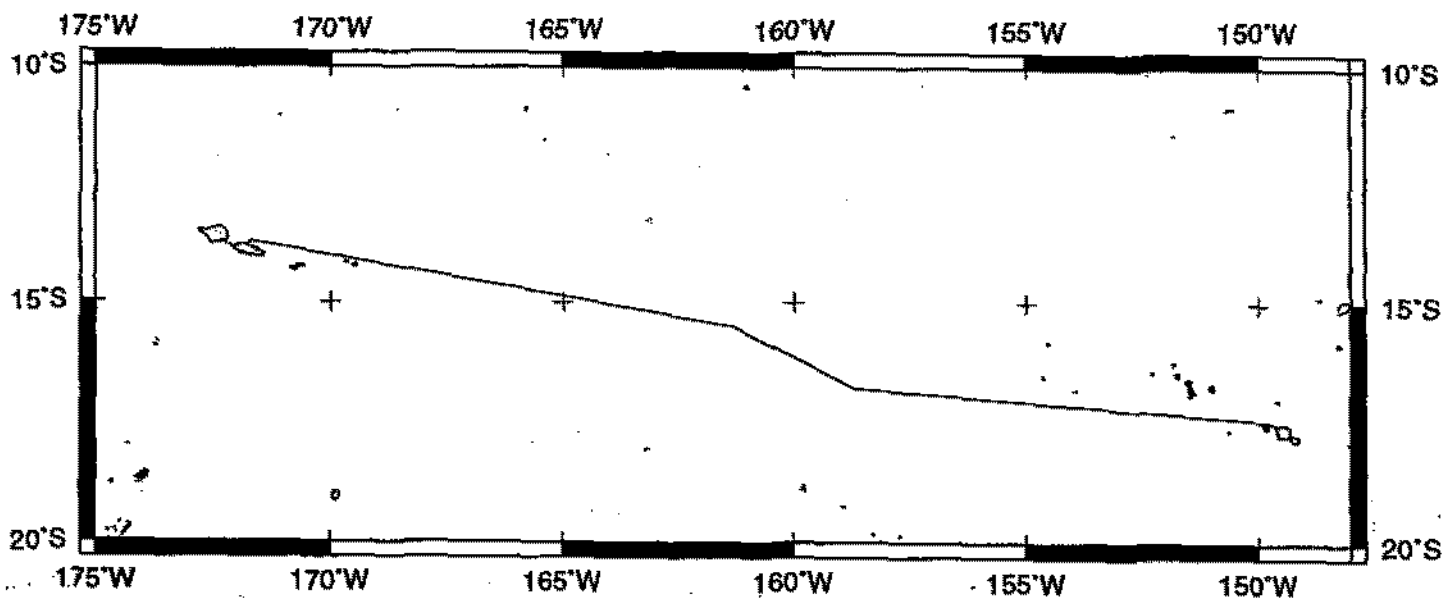
Profiles – depth, magnetic and gravity free air anomaly vs. distance. (Sections of track with seismic reflection data have a wide black line along the bottom of the profile.)

Sample Index – list of begin/end times and positions of all underway records as well as samples and measurements from other disciplines collected on the leg.

NOTE:

For information on the availability of this current digital data as well as archived digital data contact Stephen P. Miller, Geological Data Center, Scripps Institution of Oceanography, La Jolla, California 92093-0220 Phone: (858)534-1898, internet email: spmiller@ucsd.edu; or his Website: <http://SIOExplorer@ucsd.edu>

Rev 6/2001



COOK EXPEDITION LEG 15 (COOK15MV)

CHIEF SCIENTIST: Transit Leg - NO chief scientist

PORTS: Apia, Western Samoa - Papeete, Tahiti

DATES: 01 - 06 November 2001

SHIP: R/V Melville

TOTAL MILEAGE OF UNDERWAY DATA COLLECTED

Cruise- 1315 miles

Magnetics- 875 miles

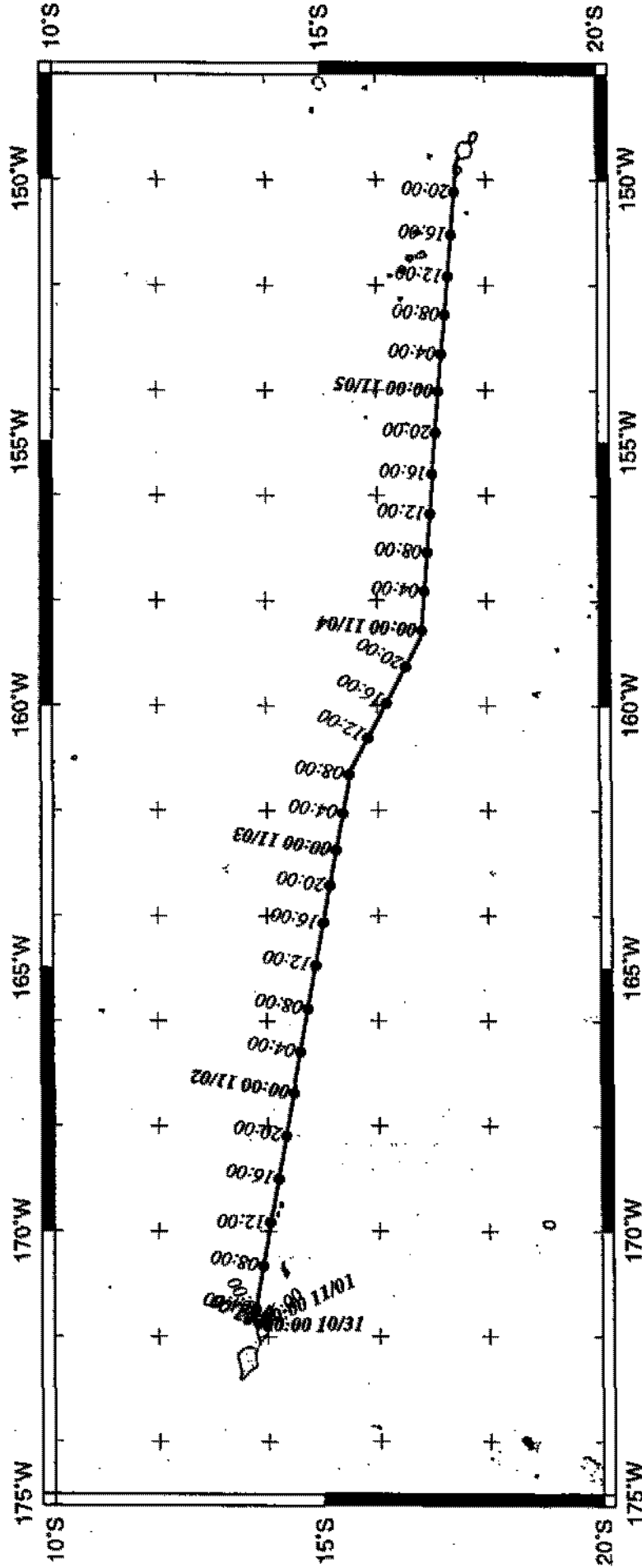
Bathymetry- 1305 miles

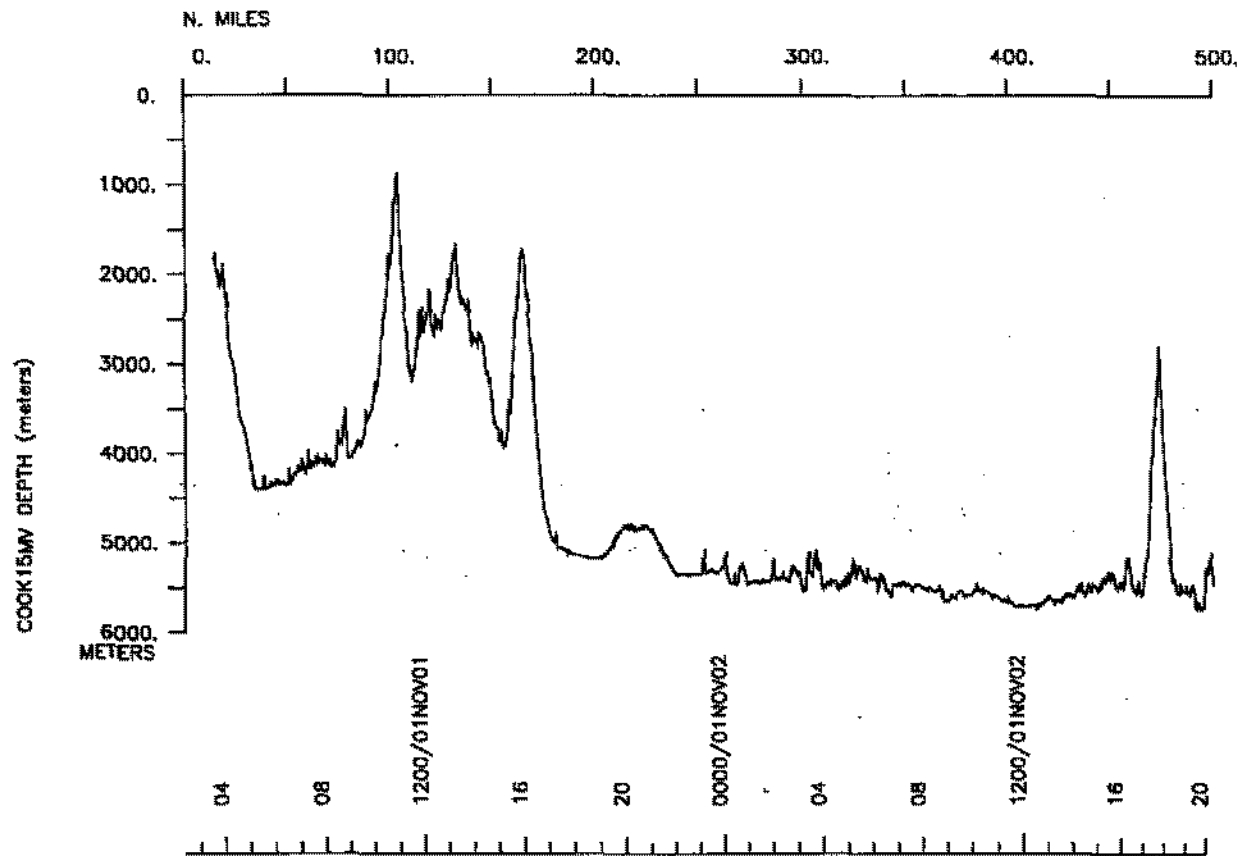
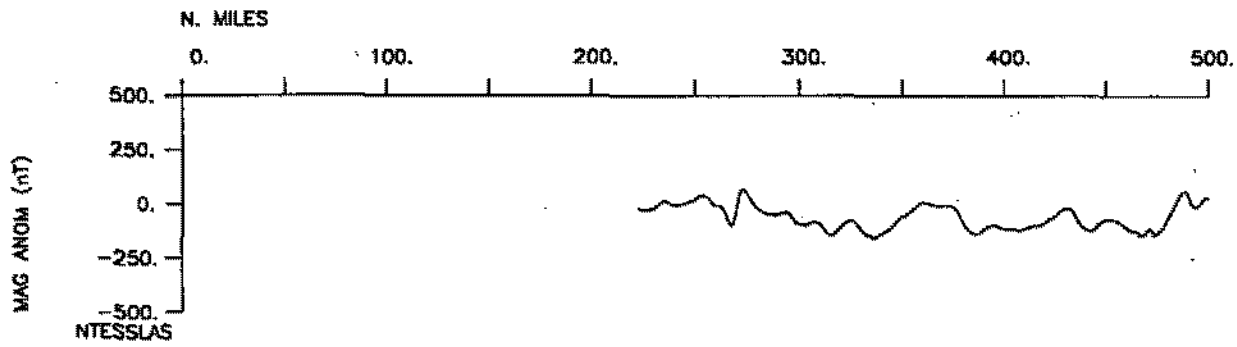
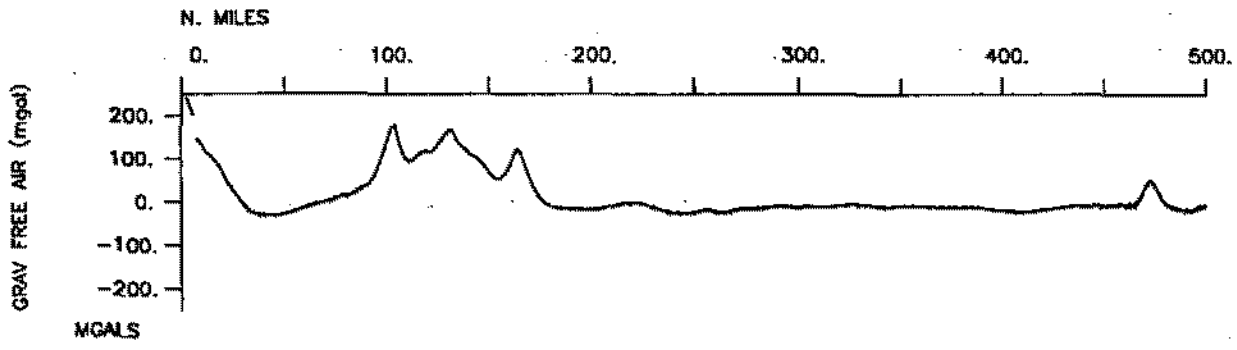
Seismic Reflection- none collected

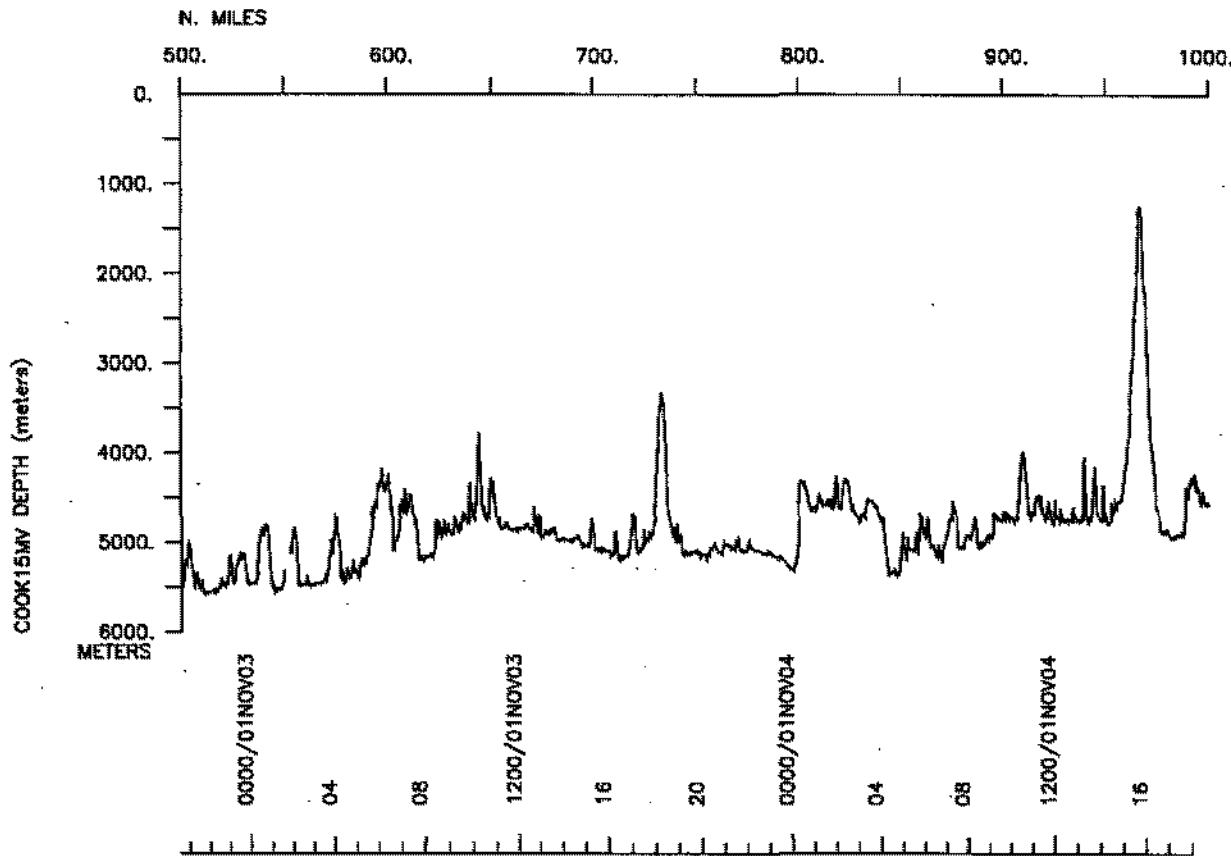
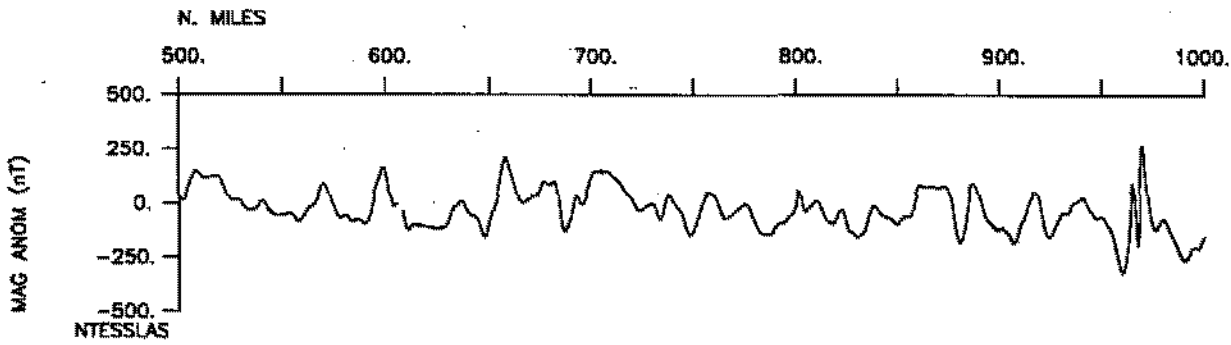
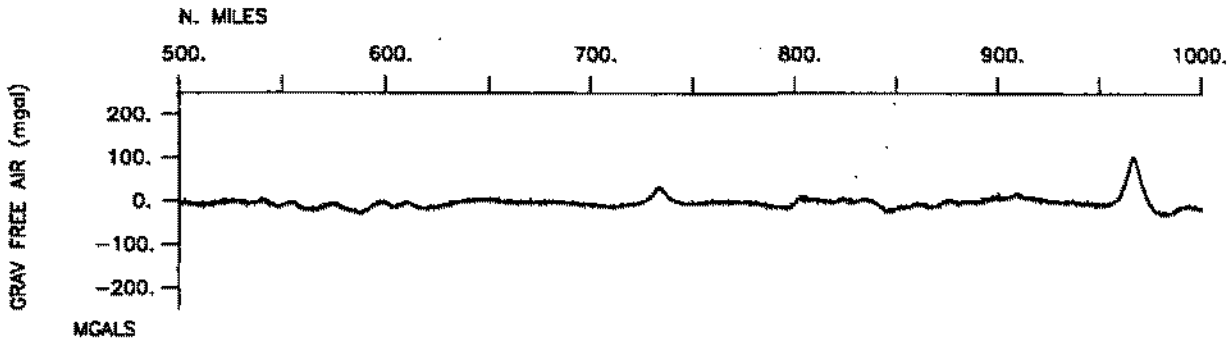
Sea Beam- 1305 miles

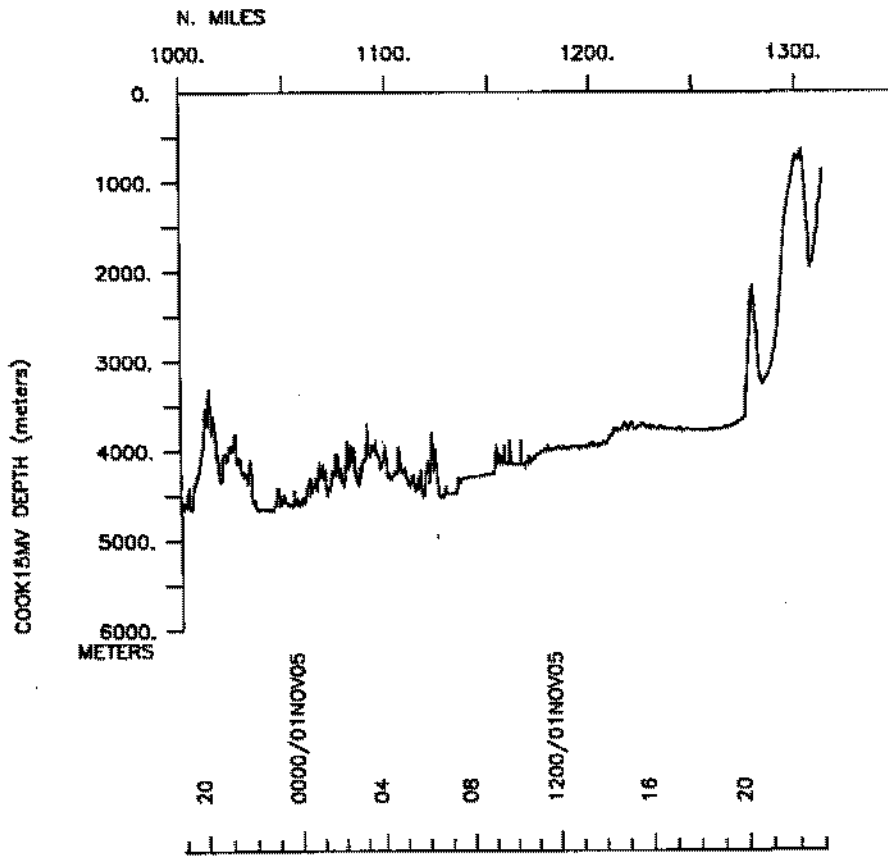
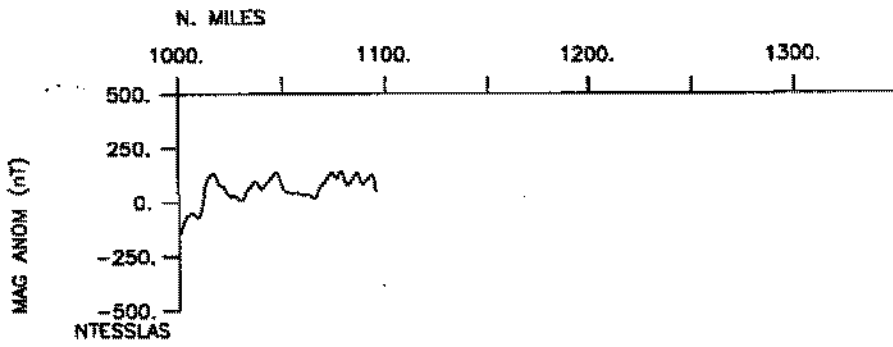
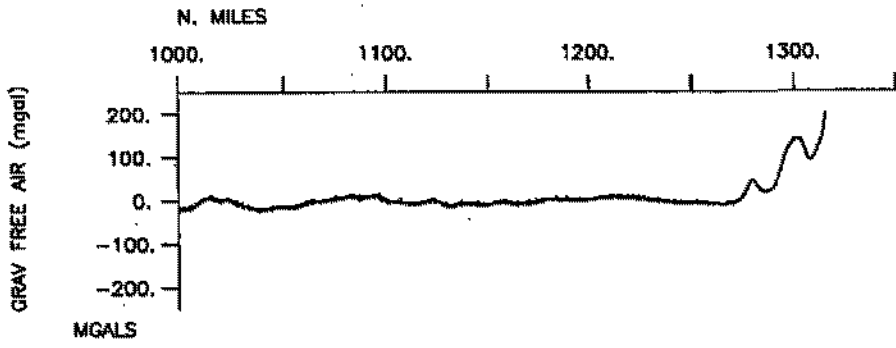
Gravity- 1315 miles

COOK15MV









S.I.O. Sample Index

COOK Expedition

Leg 15

(COOK15MV)

R/V Melville

(Issued March 2002)

PORTS:

Apia, Western Samoa (01 November 2001)
to
Papeete, Tahiti (05 November 2001)

NO Chief Scientist : Transit Leg

The Sample Index is a first level interdisciplinary listing of time, position, sample identification and disposition of all samples, records and measurements collected on this cruise leg. The index data are encoded at sea by the resident marine technician and processed on shore by the S.I.O. Shipboard Technical Support Group shortly after the completion of the cruise leg.

Positions are interpolated on the basis of sample time by comparison to a single, edited navigation file. Samples beginning at one time and position and ending at another are entered on two consecutive lines. Disposition and sample type are represented by three and four character codes to permit future computer searches on these parameters. (Listings defining these codes are available from the Shipboard Technical Support Group.)

GDC Cruise ID# 295

*** Ports ***

| | | | | | |
|------|--------|----------------------------|----------------------|---|----------|
| 0205 | 011101 | LGPT B Apia, Western Samoa | 13-49.00S 171-46.00W | f | COOK15MV |
| 2356 | 051101 | LGPT E Papeete, Tahiti | 17-32.00S 149-34.00W | f | COOK15MV |

*** Personnel ***

| # | *****NAME***** | *****TITLE***** | *****AFFILIATION***** | **CRID** |
|----------|----------------|-----------------|-----------------------|----------|
| PESP URI | Hubeny, J.B. | Grad student | U. of Rhode Island | COOK15MV |
| PECT SCG | Charters, J. | Computer tech | Scripps Institution | COOK15MV |
| PESP STS | Heckman, E. | Technician | Scripps Institution | COOK15MV |

*** NOTES ***

#An 'X' in the (B)egin/(E)nd column following the sample code indicates no sample or data recovered. A 'C' indicates continuation of data collection #from before the beginning or after the end of a particular leg, (moored #bottom instruments, for example.) The number appearing in the columns #between the sample identifier and the disposition code, for many sample #entries, is the water depth in corrected meters.

| #GMT | DDMMYY | SAMP | B | SAMPLE | DISP | | | | p | CRUISE |
|-------|--------|------|------|--------------|------|----------|-----------|--|---|----------|
| #TIME | DATE | TZ | CODE | E IDENTIFIER | CODE | LATITUDE | LONGITUDE | | c | LEG-SHIP |

*** Underway Data Curator - Shipboard Technical Support Group ext.41899 ***
 *** Digital Data Curator - Geological Data Center, S.P. Miller, ext.41898 ***

*** MultiBeam Data (vertical beam and side scan) ***

| | | | | | | | | | | |
|------|--------|---|------|---|----------------------|-----|-----------|------------|---|----------|
| 0331 | 011101 | 0 | MBSR | B | Seabeam digital data | GDC | 13-45.21S | 171-34.83W | g | COOK15MV |
| 2305 | 051101 | 0 | MBSR | E | Seabeam digital data | GDC | 17-31.29S | 149-36.51W | g | COOK15MV |

*** Digital Gravity ***

| | | | | | | | | | | |
|------|--------|---|------|---|-----------------|-----|-----------|------------|---|----------|
| 0205 | 011101 | 0 | GVDD | B | Digital Gravity | GDC | 13-49.64S | 171-45.67W | g | COOK15MV |
| 2350 | 051101 | 0 | GVDD | E | Digital Gravity | GDC | 17-32.33S | 149-34.57W | g | COOK15MV |

*** Digital Magnetics ***

| | | | | | | | | | | |
|------|--------|---|------|---|-------------------|-----|-----------|------------|---|----------|
| 2034 | 011101 | 0 | MGDD | B | Digital magnetics | GDC | 14-21.13S | 168-04.17W | g | COOK15MV |
| 0329 | 051101 | 0 | MGDD | E | Digital magnetics | GDC | 17-10.85S | 153-23.10W | g | COOK15MV |

*** Integrated Meteorological Acquisition System ***

| | | | | | | | | | | |
|------|--------|---|------|---|----------------------|-----|-----------|------------|---|----------|
| 0205 | 011101 | 0 | IMET | B | Weather measurements | GDC | 13-49.64S | 171-45.67W | g | COOK15MV |
| 2356 | 051101 | 0 | IMET | E | Weather measurements | GDC | 17-32.33S | 149-34.57W | g | COOK15MV |

| #GMT | DDMMYY | SAMP | B | SAMPLE | DISP | | | | p | CRUISE |
|-------|--------|------|------|--------------|------|----------|-----------|--|---|----------|
| #TIME | DATE | TZ | CODE | E IDENTIFIER | CODE | LATITUDE | LONGITUDE | | c | LEG-SHIP |

*** Acoustic Doppler Current Profiler ***

| | | | | | | | | | | |
|------|--------|---|------|------------------------|-----|-----------|------------|---|--|----------|
| 0205 | 011101 | 0 | ADCP | B 300kHz current meas. | GDC | 13-49.64S | 171-45.67W | g | | COOK15MV |
| 2356 | 051101 | 0 | ADCP | E 300kHz current meas. | GDC | 17-32.33S | 149-34.57W | g | | COOK15MV |

*** Expendable Bathythermographs ***

| | | | | | | | | | | |
|------|--------|---|------|---------------------|-----|-----------|------------|---|--|----------|
| 0455 | 011101 | 0 | BTXP | MK21 # 51 Fast_Deep | GDC | 13-48.33S | 171-17.43W | g | | COOK15MV |
| 0220 | 021101 | 0 | BTXP | MK21 # 52 Fast_Deep | GDC | 14-32.83S | 166-55.12W | g | | COOK15MV |
| 0227 | 031101 | 0 | BTXP | MK21 # 53 Fast_Deep | GDC | 15-19.22S | 162-20.67W | g | | COOK15MV |
| 0242 | 031101 | 0 | BTXP | MK21 # 54 Fast_Deep | GDC | 15-19.66S | 162-18.08W | g | | COOK15MV |
| 2218 | 031101 | 0 | BTXP | MK21 # 55 Fast_Deep | GDC | 16-42.69S | 158-52.57W | g | | COOK15MV |
| 0407 | 051101 | 0 | BTXP | MK21 # 56 Fast_Deep | GDC | 17-11.22S | 153-17.85W | g | | COOK15MV |
| 2044 | 051101 | 0 | BTXP | MK21 # 57 Fast_Deep | GDC | 17-26.35S | 150-05.80W | g | | COOK15MV |

*** SOLO Floats ***

| | | | | | | | | | | |
|------|--------|---|------|--------------------------|--|-----------|------------|--|--|----------|
| 2320 | 011101 | 0 | CTXX | Deployed SOLO Float 2041 | | 14-26.729 | 167-31.127 | | | COOK15MV |
| 1635 | 021101 | 0 | CTXX | Deployed SOLO Float 2040 | | 15-02.167 | 164-01.701 | | | COOK15MV |
| 0657 | 031101 | 0 | CTXX | Deployed SOLO Float 2027 | | 15-27.442 | 161-31.987 | | | COOK15MV |
| 0240 | 041101 | 0 | CTXX | Deployed SOLO Float 2036 | | 16-50.658 | 158-04.887 | | | COOK15MV |

End Sample Index

COOK15MV