

**REPORT AND INDEX OF
UNDERWAY MARINE GEOPHYSICAL DATA**

KIWI EXPEDITION

LEG 12

(KIWI12RR)

R/V Revelle

(Issued July 1998)

Ports:

Pago Pago, American Samoa (9 May 1998)

to

Honolulu, Hawaii (29 May 1998)

Chief Scientist:

**Bruce Luyendyk, Univ. of Calif. Santa Barbara
email: luyendyk@quake.crustal.ucsb.edu**

No Resident Marine Technician on board

**Dan Jacobson, Computer Technician
No SeaBeam/UW Processor on board**

**Post-Cruise Processing and Report Preparation by the
Geological Data Center, Scripps Institution of Oceanography
La Jolla, California 92093-0223**

NOTE: This is an index of underway geophysical data edited and processed after the completion of the cruise leg and is intended primarily for informal use within the institution. This document is not to be reproduced or distributed outside Scripps without prior approval of the chief scientist or the Geological Data Center, Scripps Institution of Oceanography, La Jolla, California 92093-0223

GDC Cruise I.D.# 276

**REPORT AND INDEX OF NAVIGATION
AND UNDERWAY GEOPHYSICAL DATA**

Processed by the Geological Data Center
Scripps Institution of Oceanography

Contents:

Index Chart - gives track of cruise leg, dates, ports, and mileage of each type of data collected.

Track Charts - annotated with dates and hour ticks.

Profiles - depth, magnetic and gravity free air anomaly vs. distance. (Sections of track with seismic reflection data have a wide black line along the bottom of the profile.)

Sample Index - list of begin/end times and positions of all underway records as well as samples and measurements from other disciplines collected on the leg.

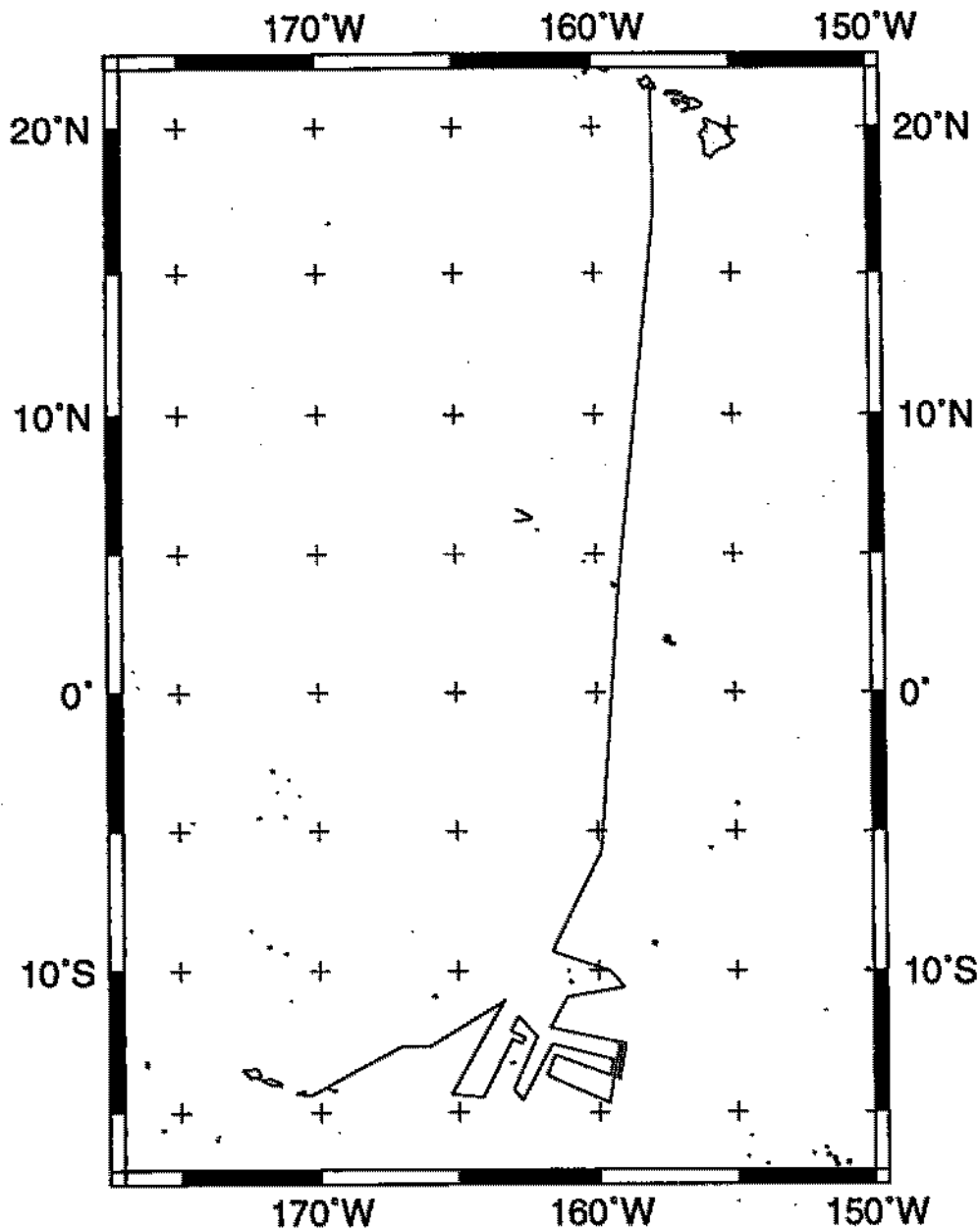
NOTE: One or more of the underway data types may not be collected on a given leg. For information on the availability and reproduction costs of data in the following forms, contact S.M. Smith, Curator, Geological Data Center, Scripps Institution of Oceanography, La Jolla, California 92093-0223. Phone: (619)534-2752, FAX: (619)534-6500, Internet email: ssmith@ucsd.edu

1. Files via ftp or on 8mm (Exabyte) and 4mm (DAT) magnetic tape:
 - a) Separate time series ASCII files of navigation, single beam depth, gravity and magnetics.
 - b) Above data in a single merged ASCII file in the MGD77 Exchange Format.
 - c) SeaBeam depth data (binary, Sun byte order)
 - d) SeaBeam Sidescan data.

2. Microfilm (35 mm flowfilm) or hard copies of:
 - a) Underway watch log book.
 - b) SeaBeam vertical beam profile/Sidescan records.
 - c) 3.5 kHz and 12 kHz echosounder records.
 - d) Seismic reflection profiler records.

3. Navigation listing with times and positions of fixes and course and speed changes.

4. Custom plots in Mercator projection:
 - a) Track plots.
 - b) SeaBeam depth contour plots.
 - c) Depth, magnetic or gravity values printed or profiled along track.



KIWI EXPEDITION LEG 12

CHIEF SCIENTIST: Bruce Luyendyk, U. C. Santa Barbara

PORTS: Pago Pago, Amer. Samoa - Honolulu, Hawaii

DATES: 09 - 29 May 1998

SHIP: R/V Revelle

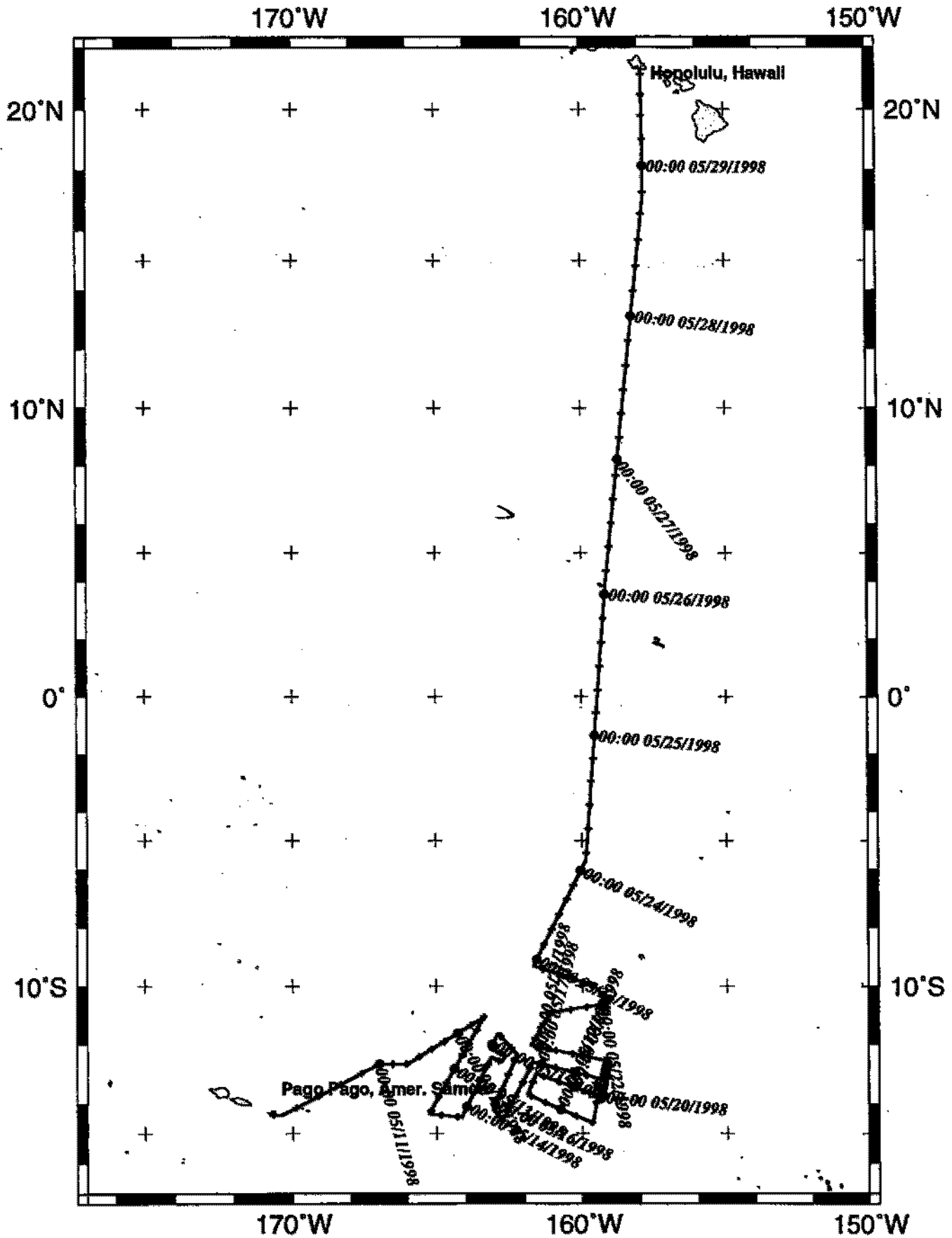
TOTAL MILEAGE OF UNDERWAY DATA COLLECTED

Cruise - 4527 miles Magnetics - 2677miles

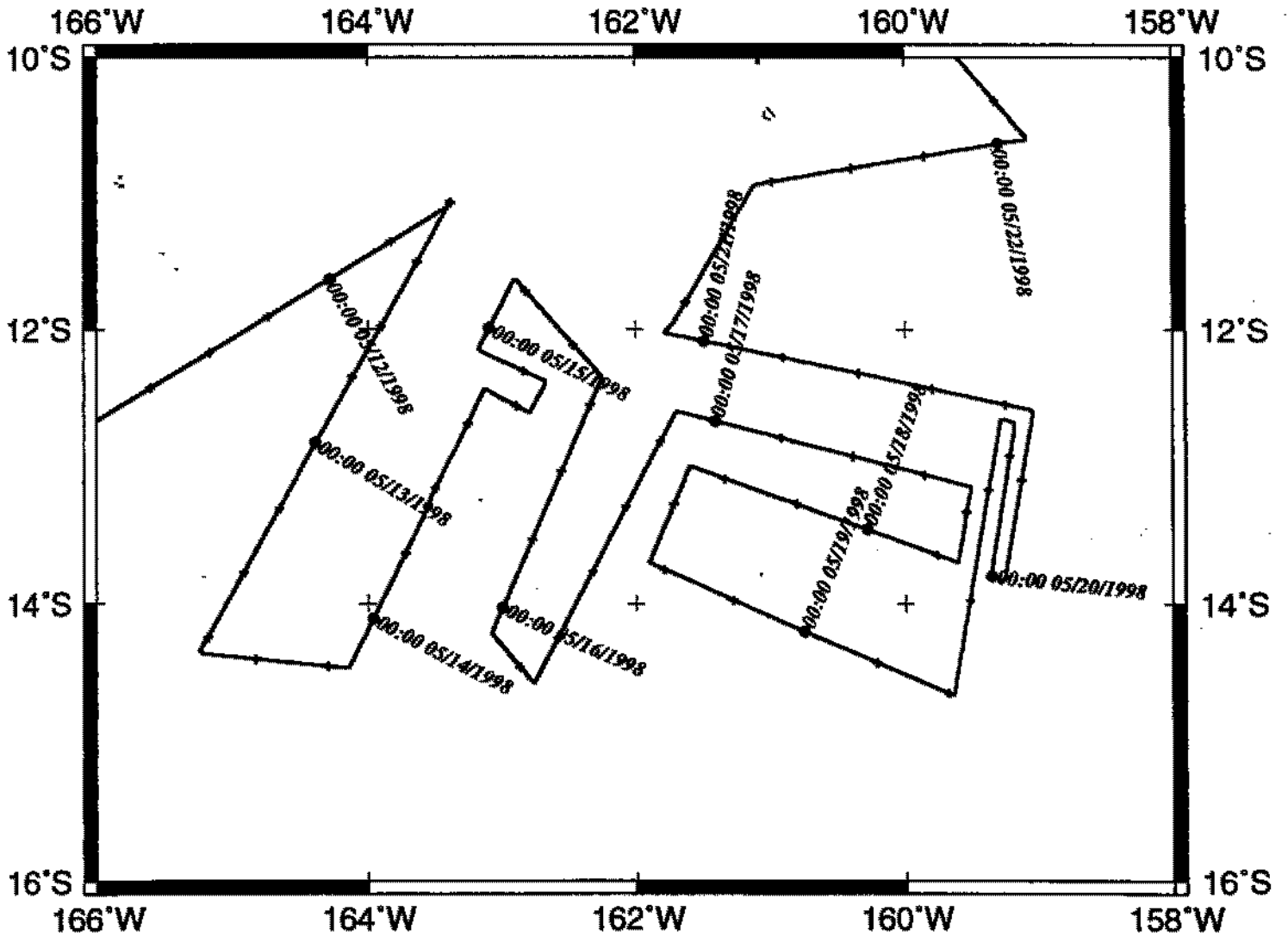
Bathymetry - 4452 miles Seismic Reflection - 1830 miles

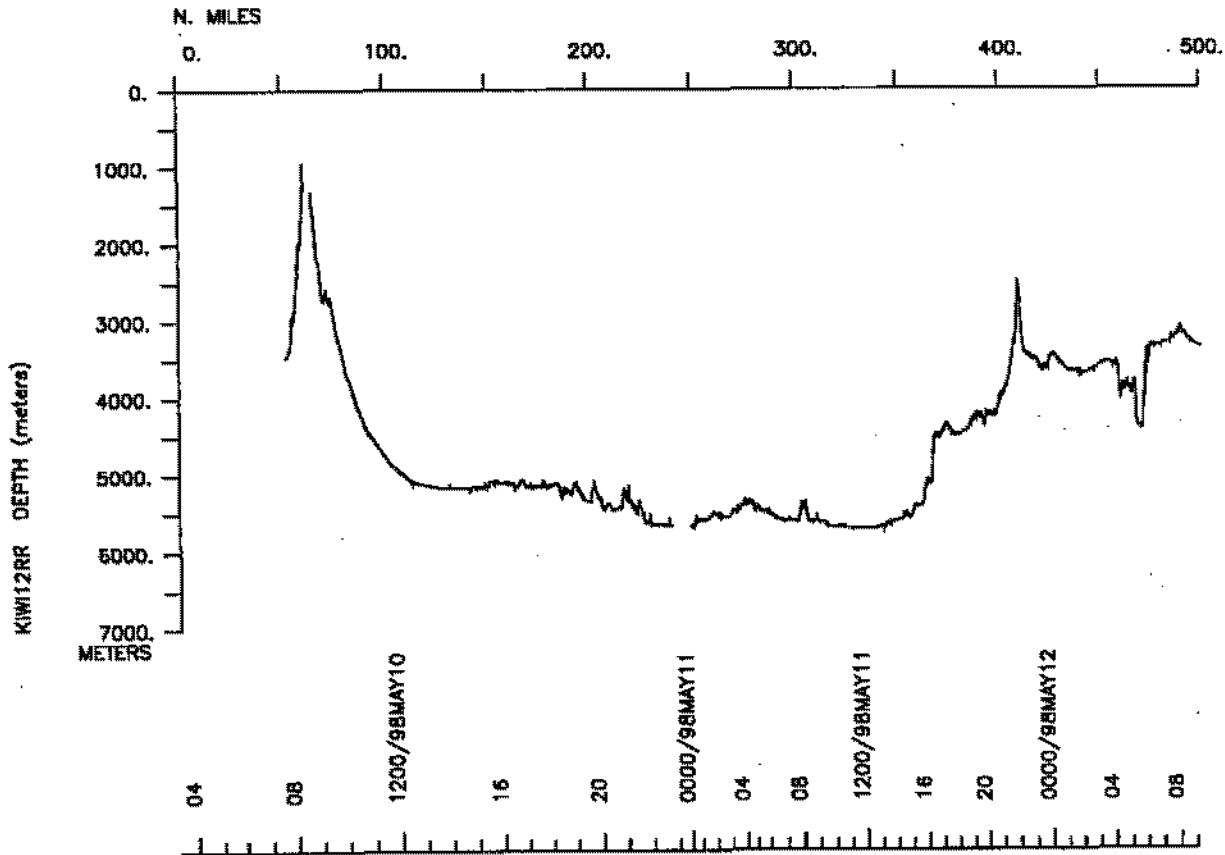
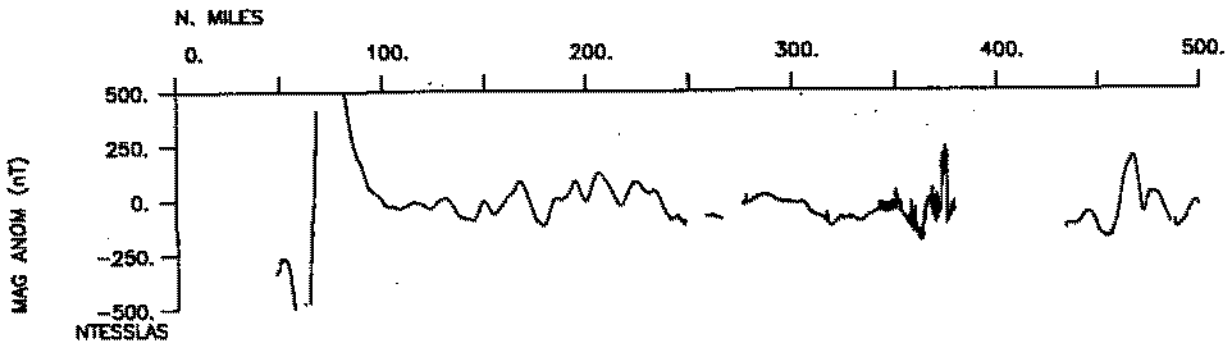
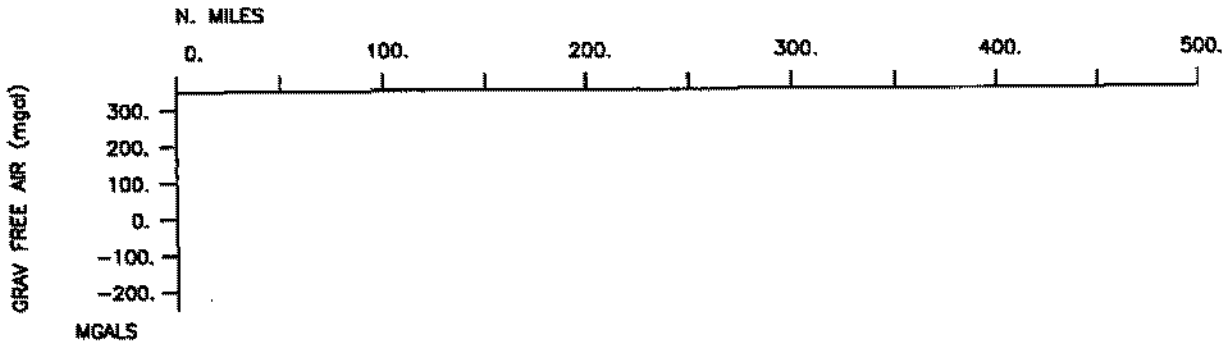
Sea Beam - 4452 miles Gravity - none collected

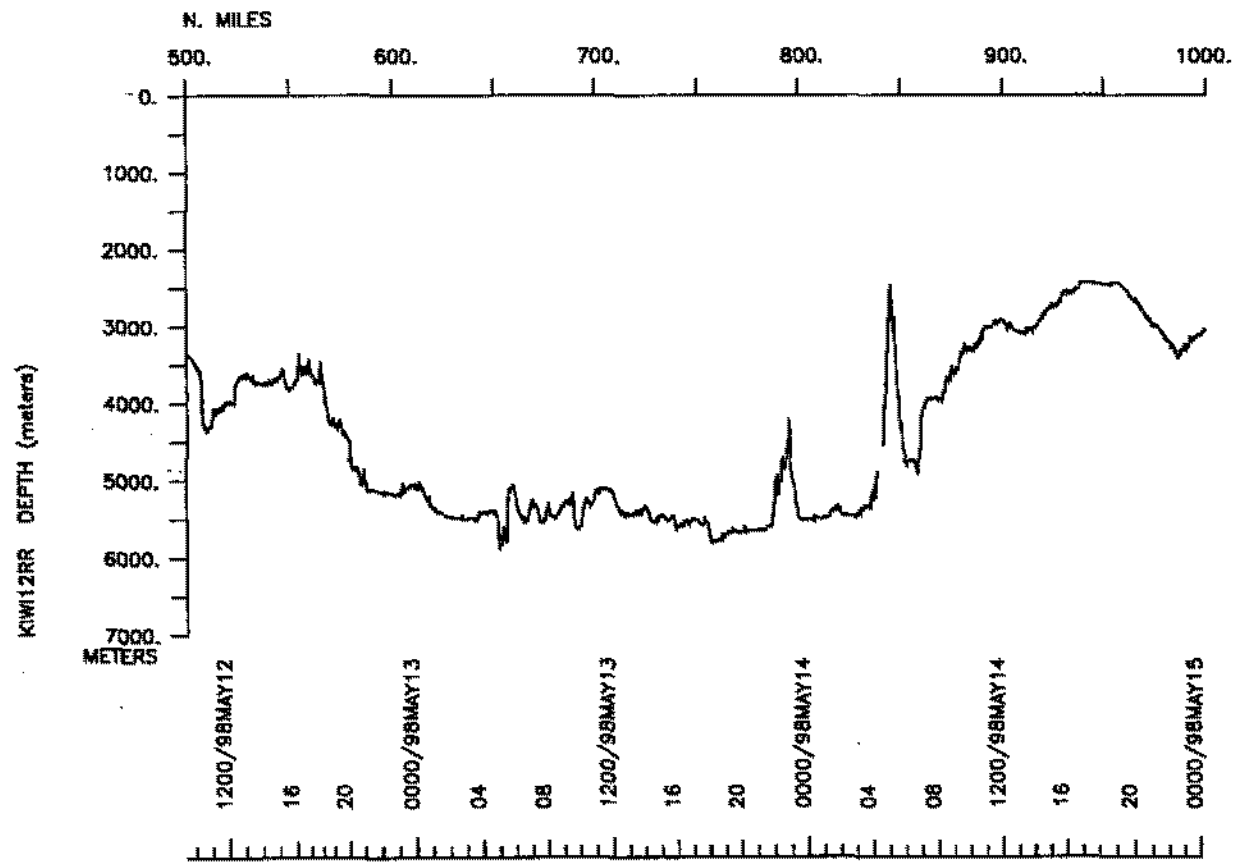
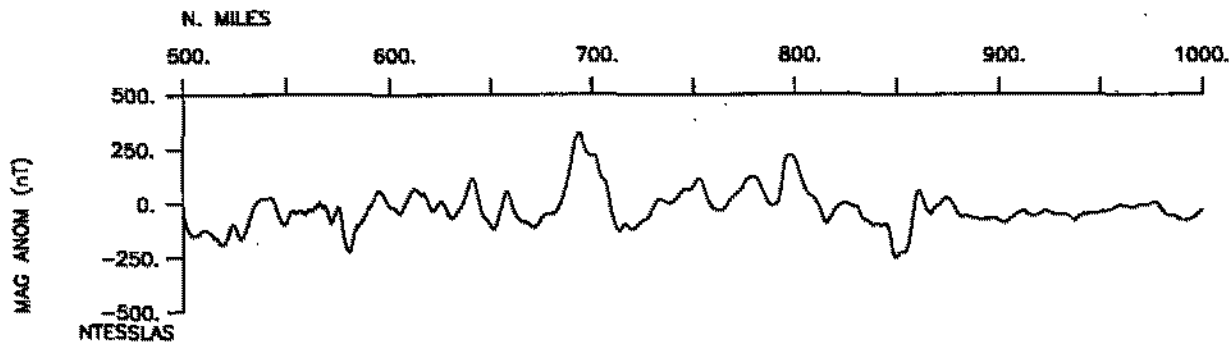
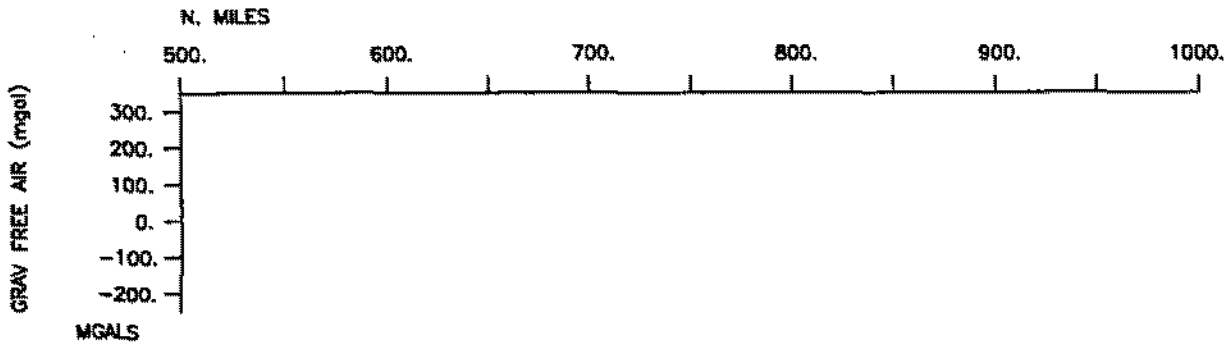
KIWI12RR Track

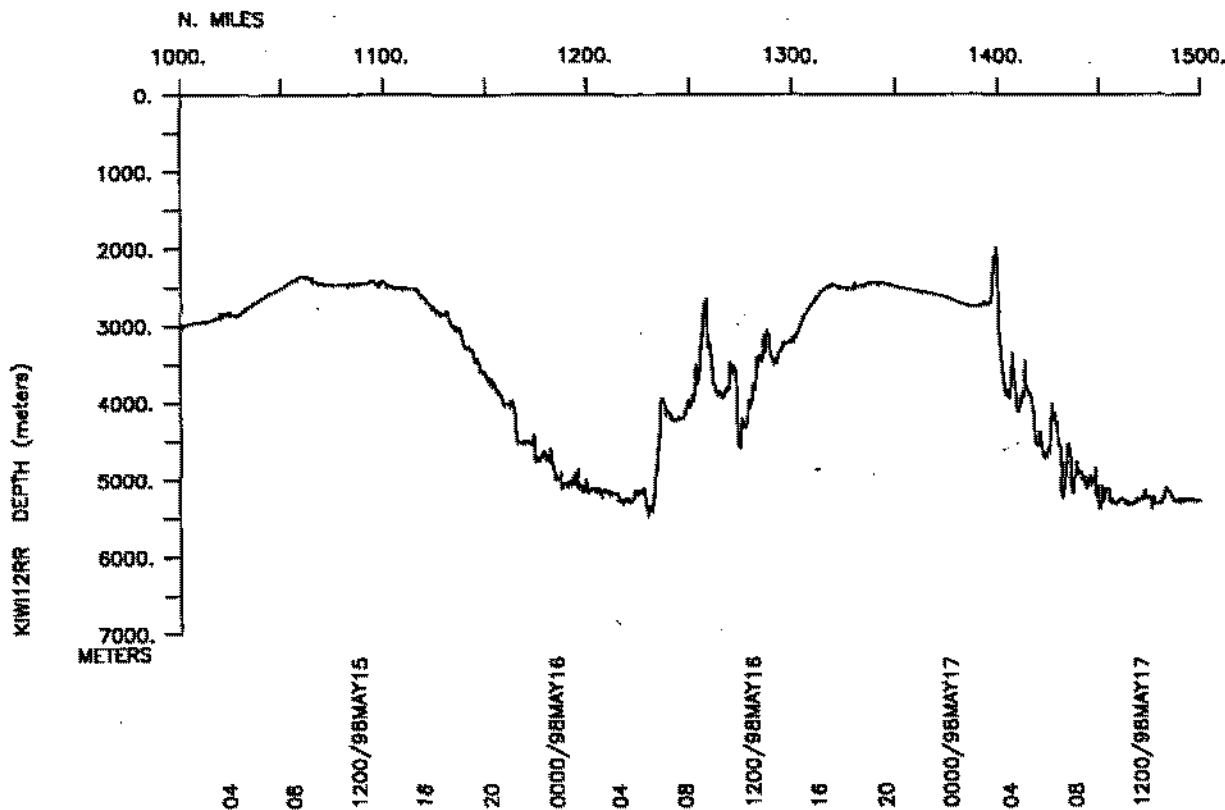
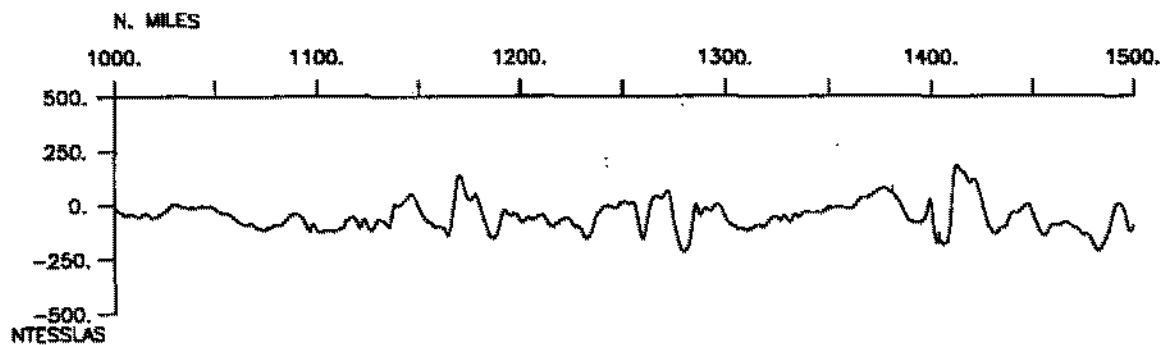
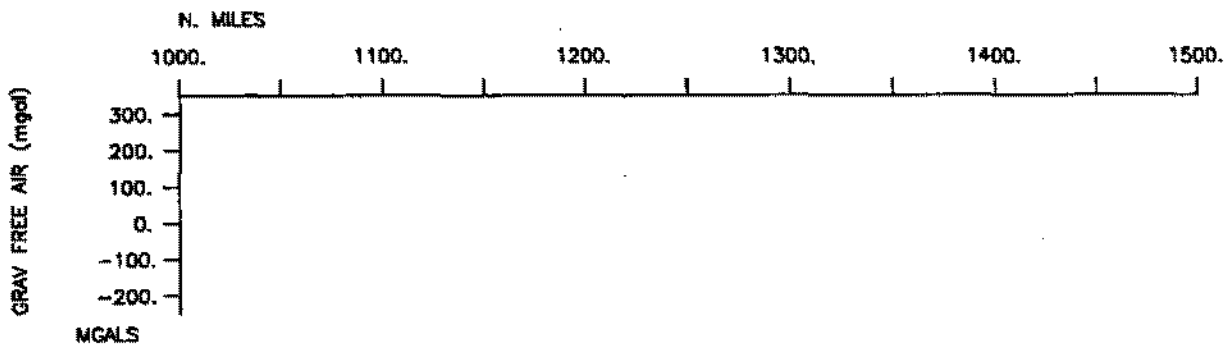


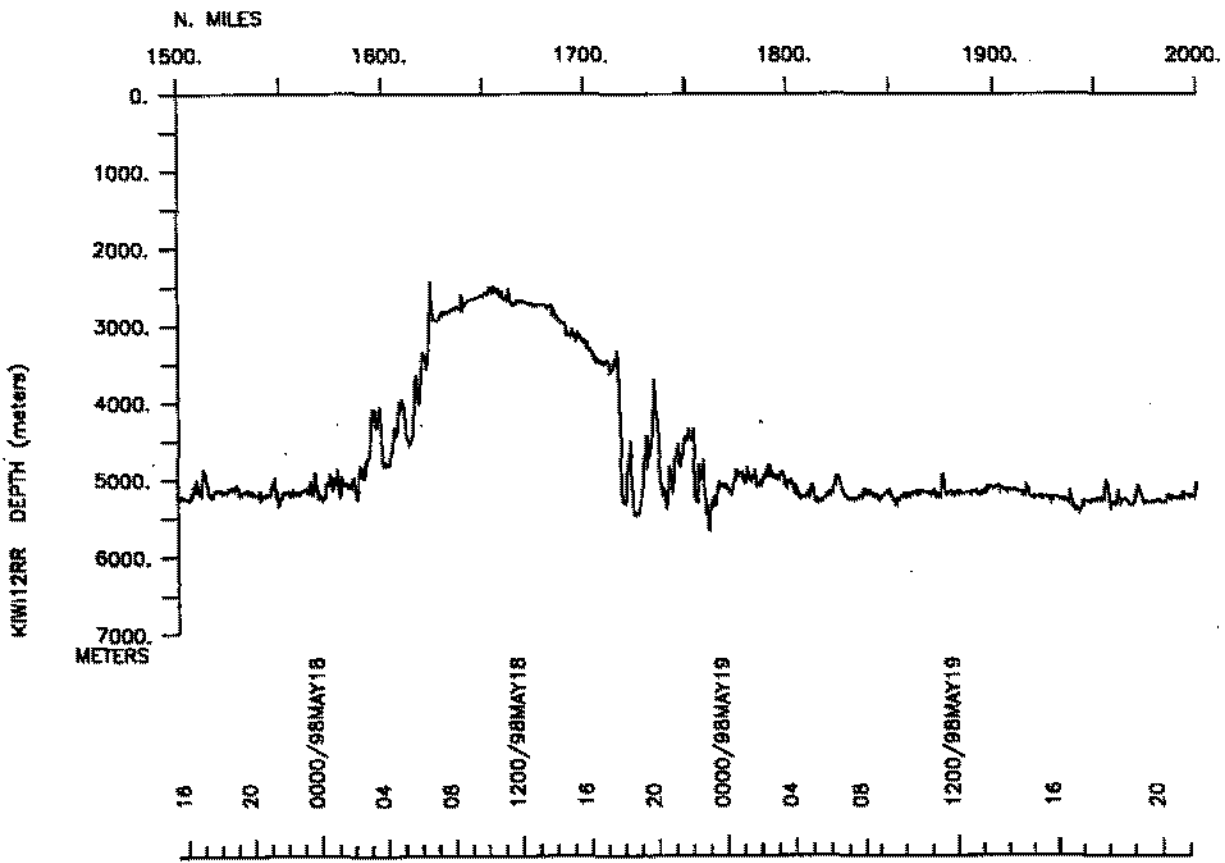
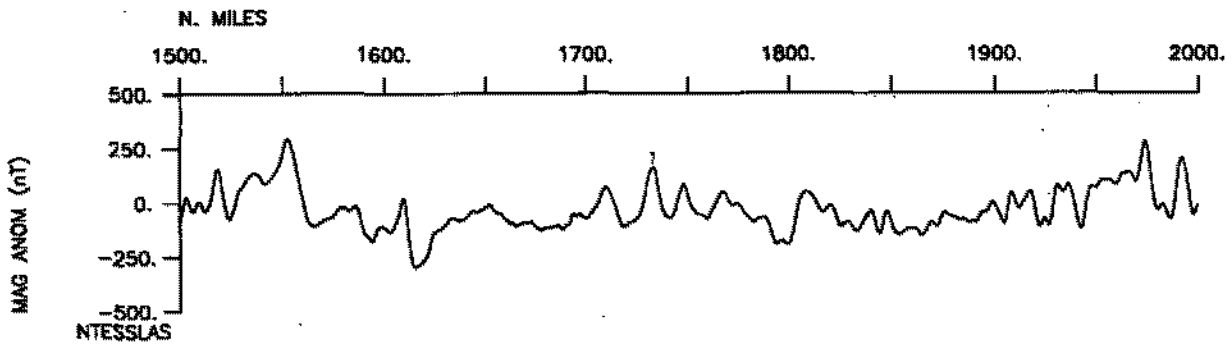
Survey Area

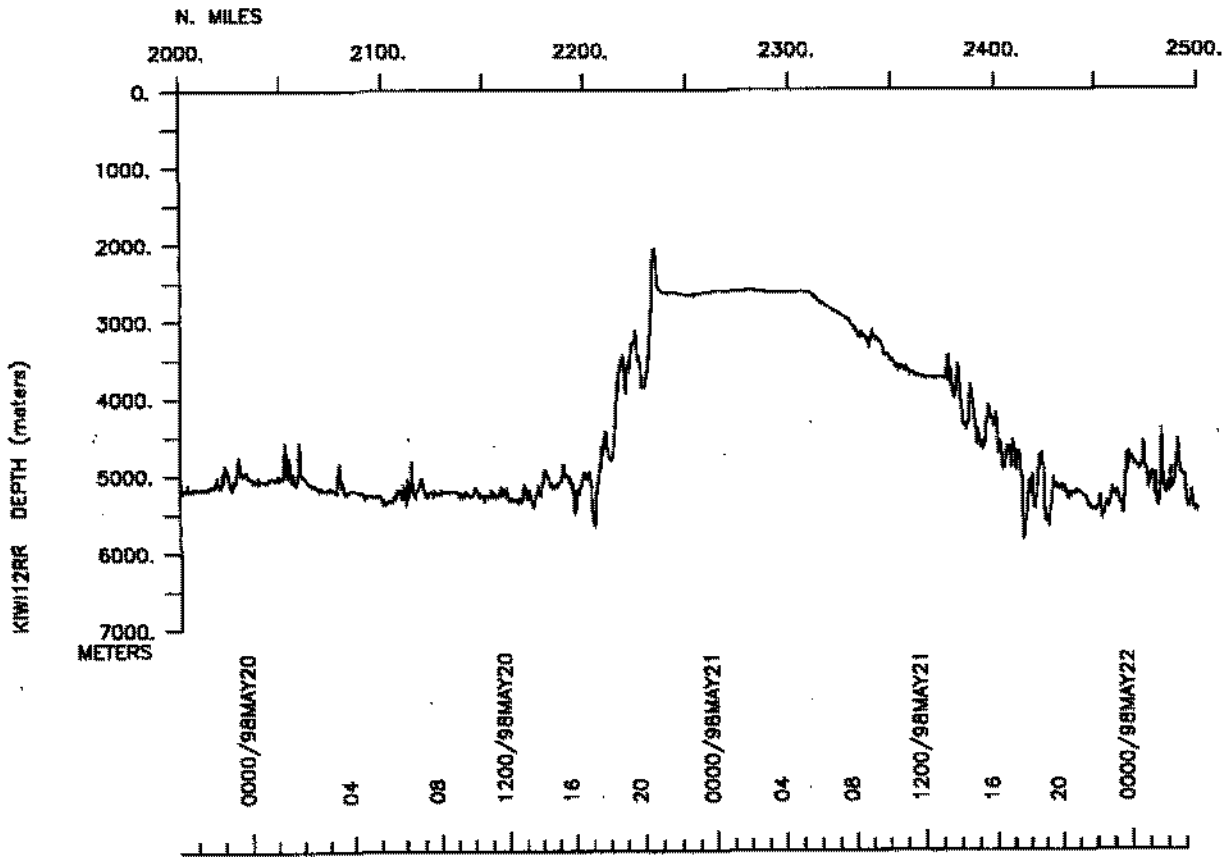
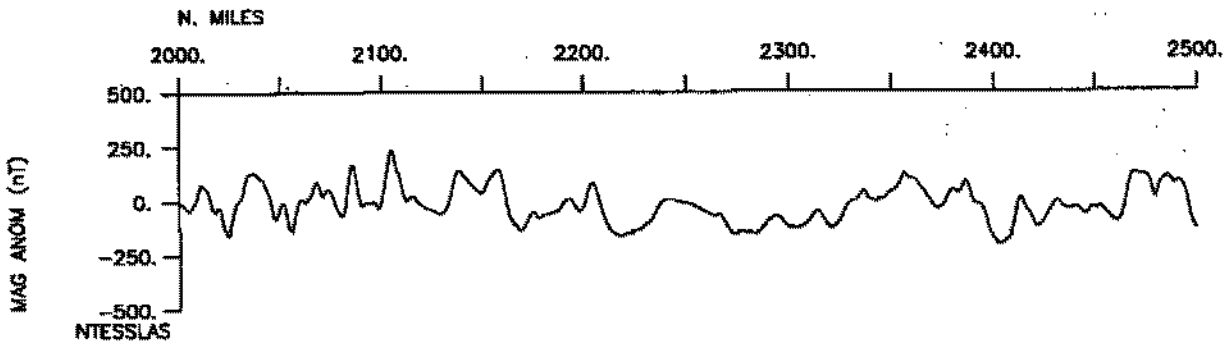
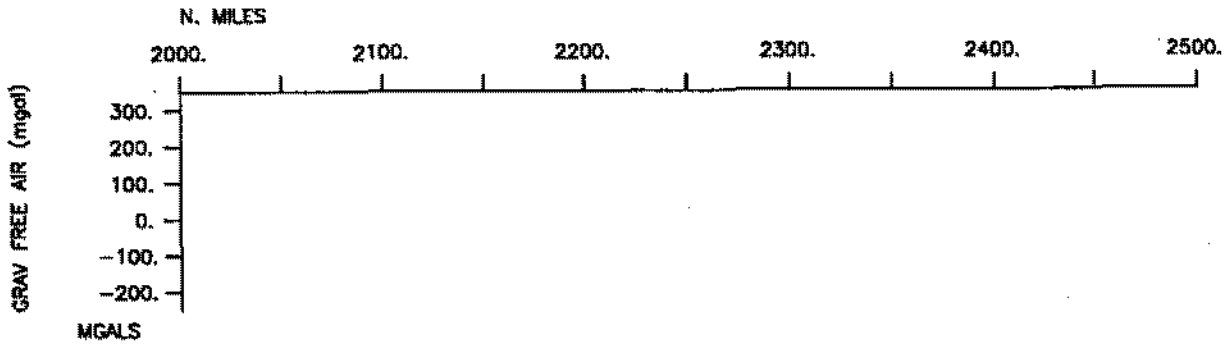


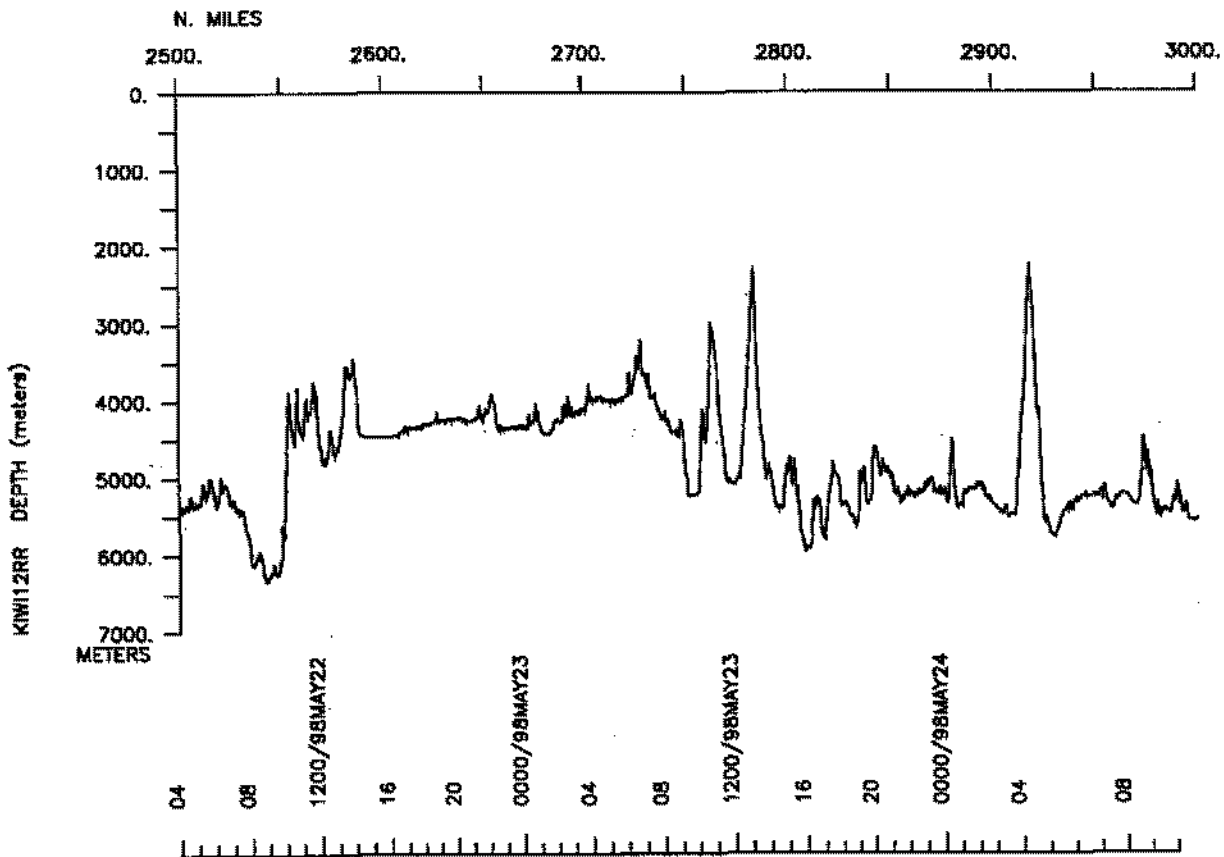
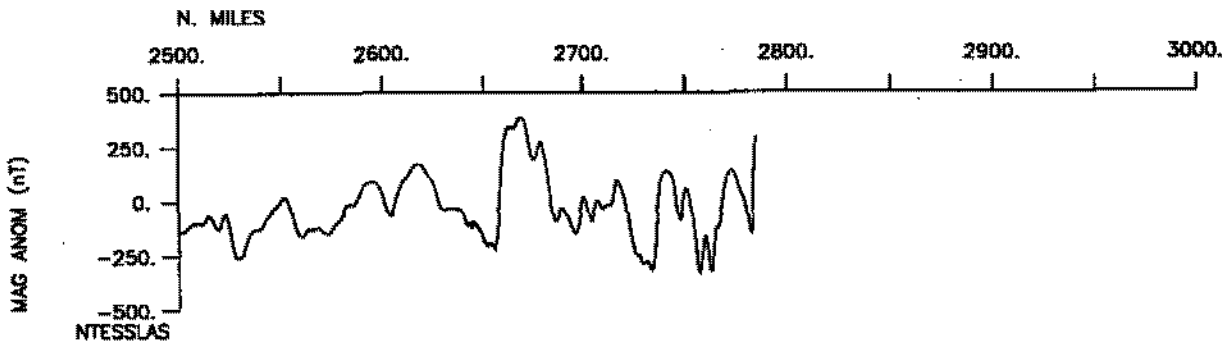
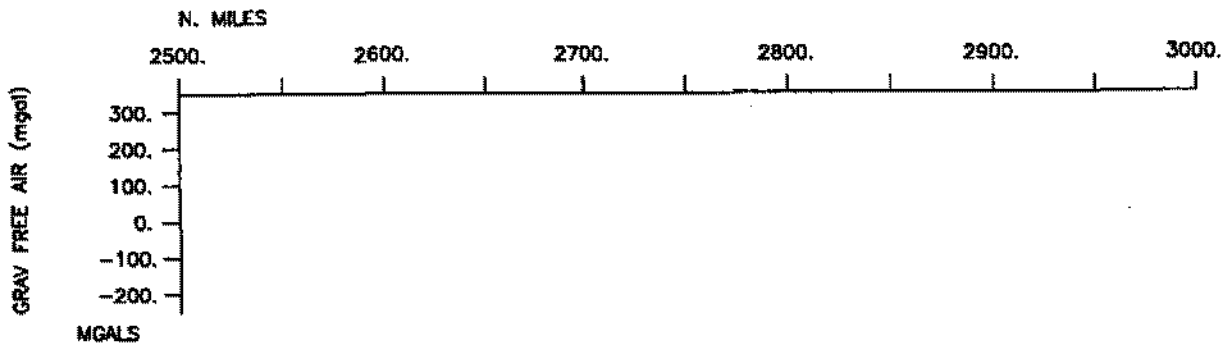


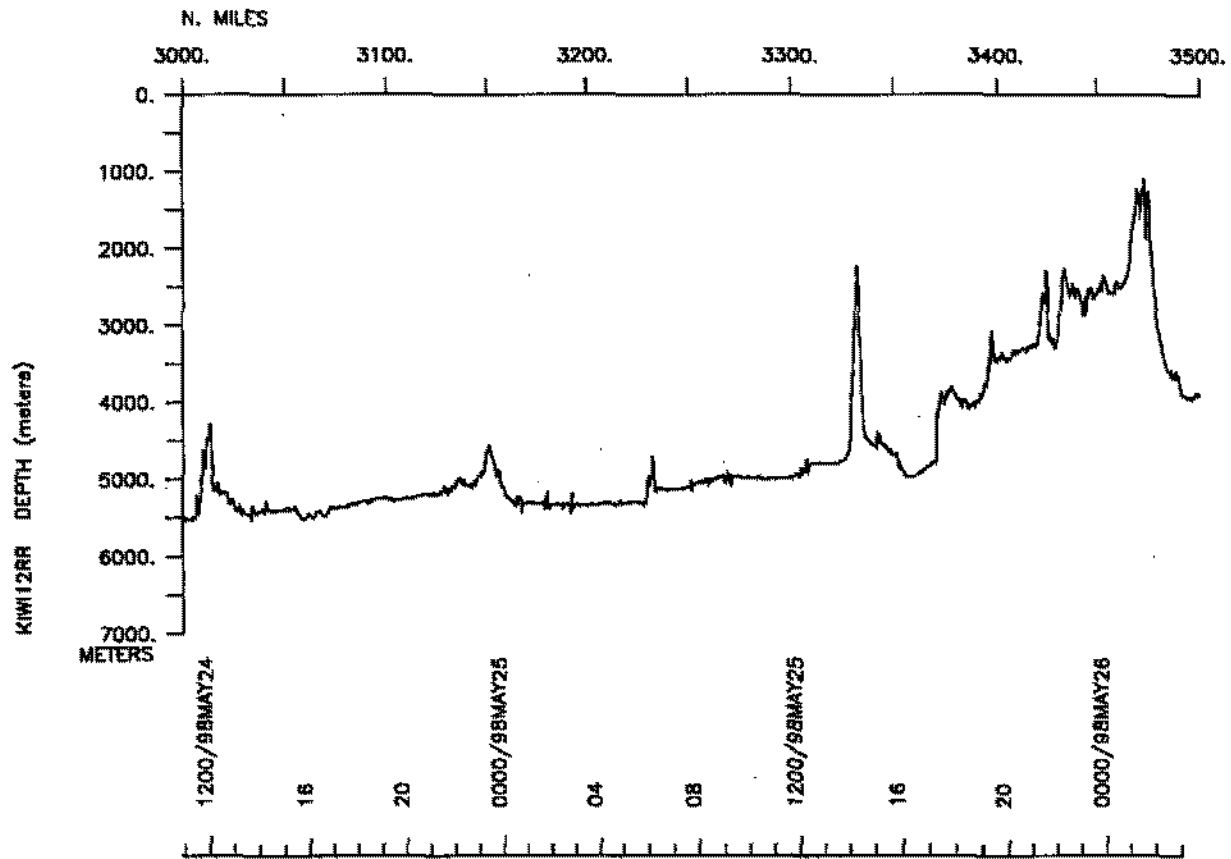
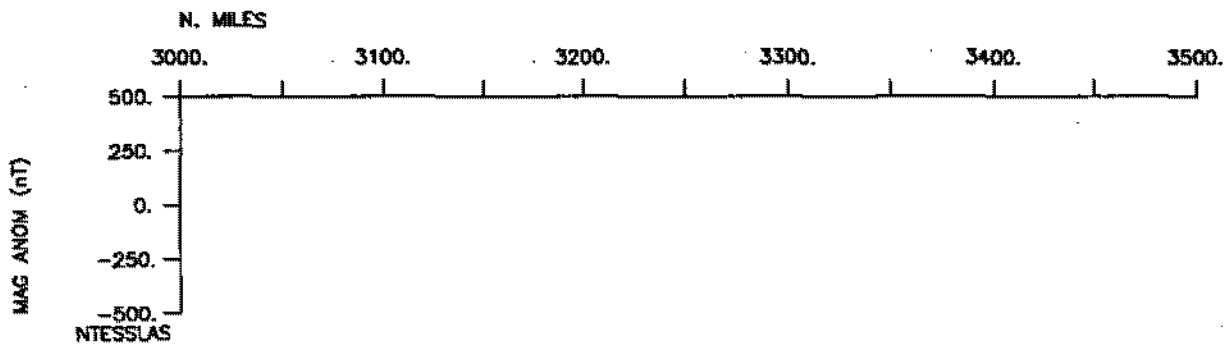
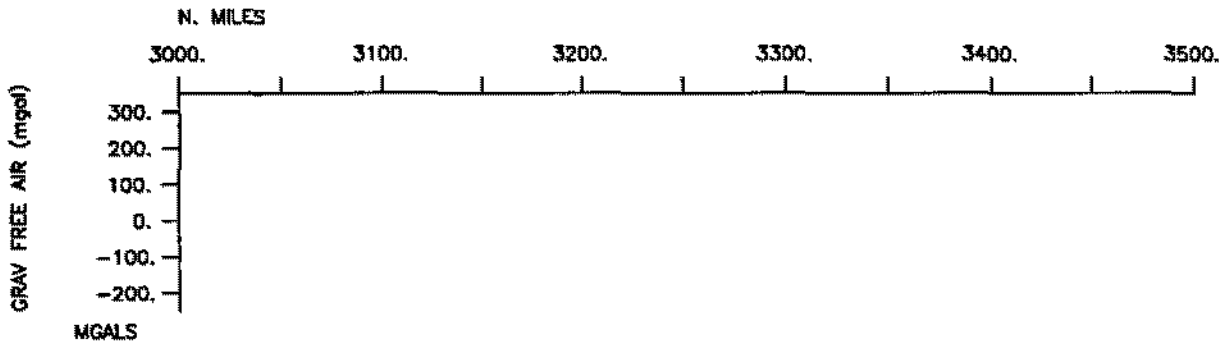


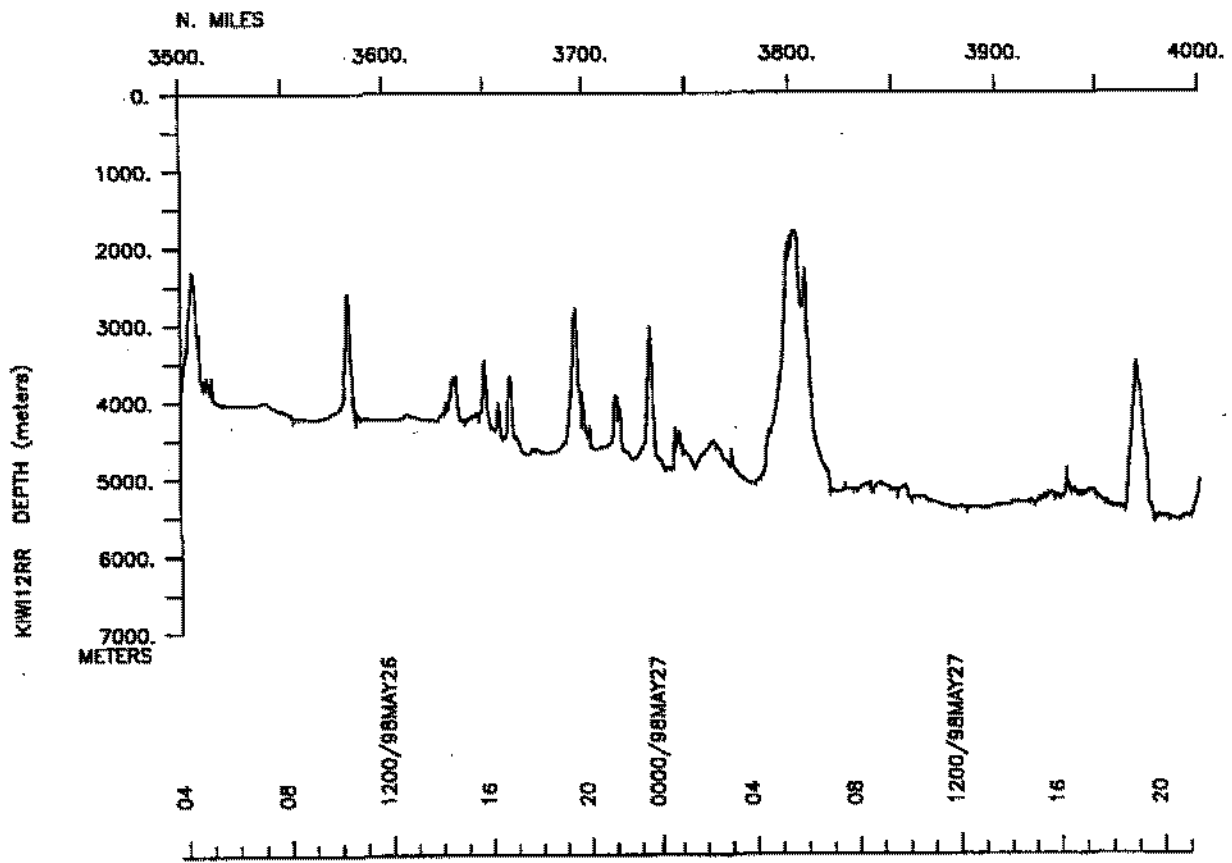
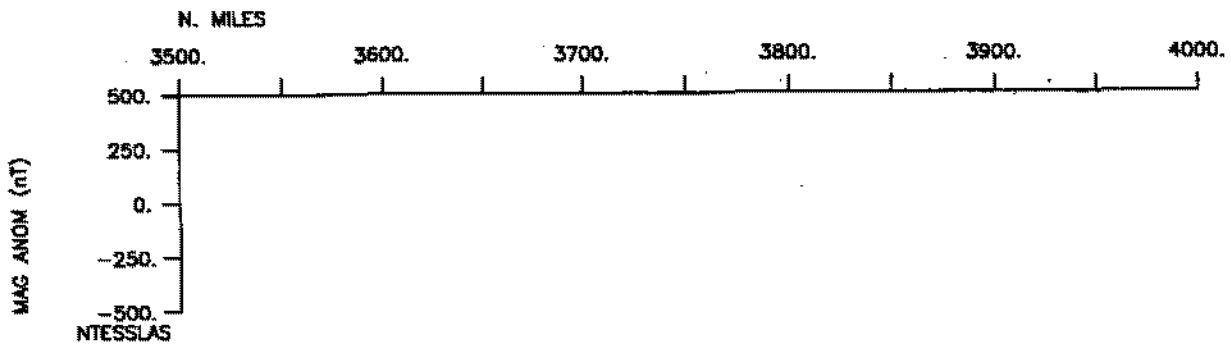
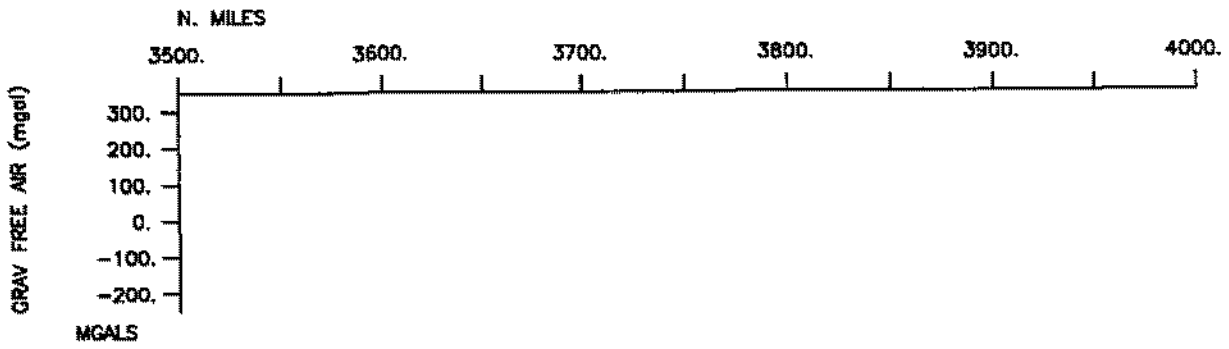


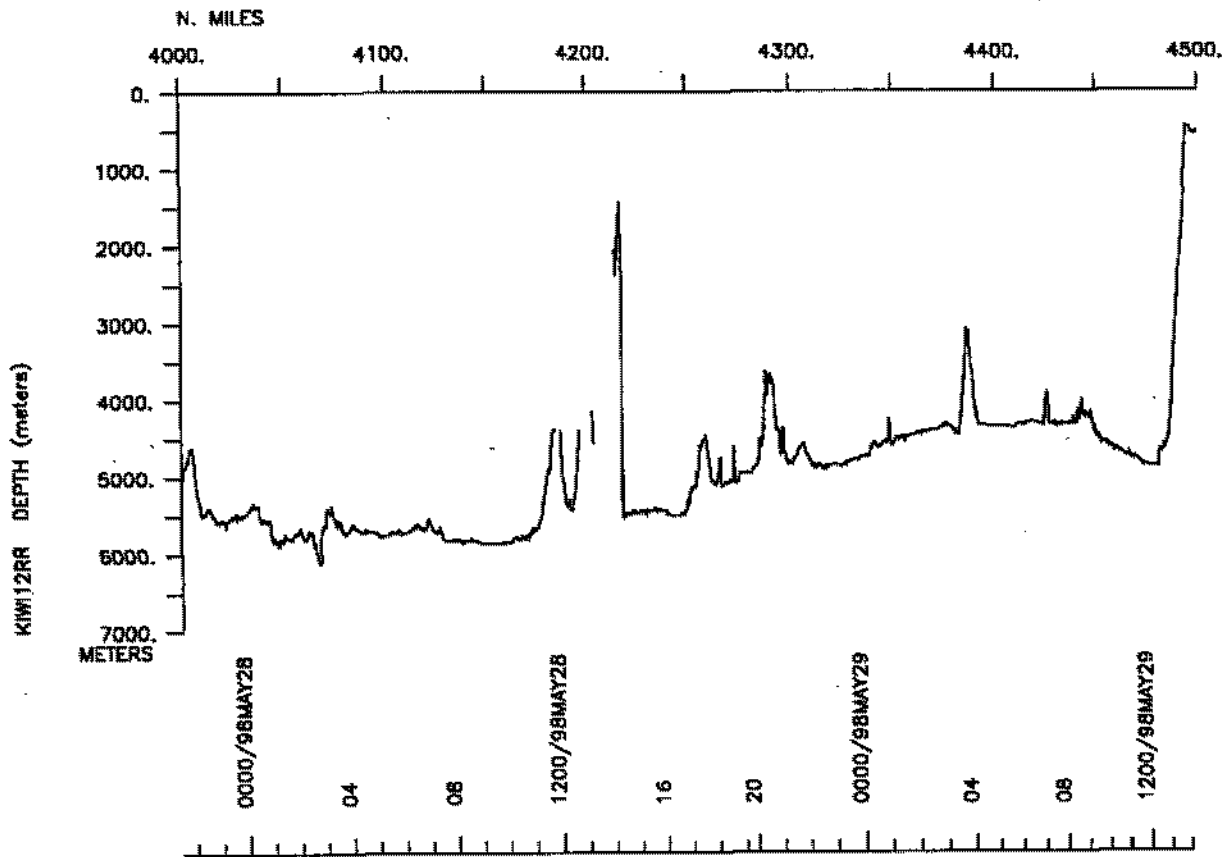
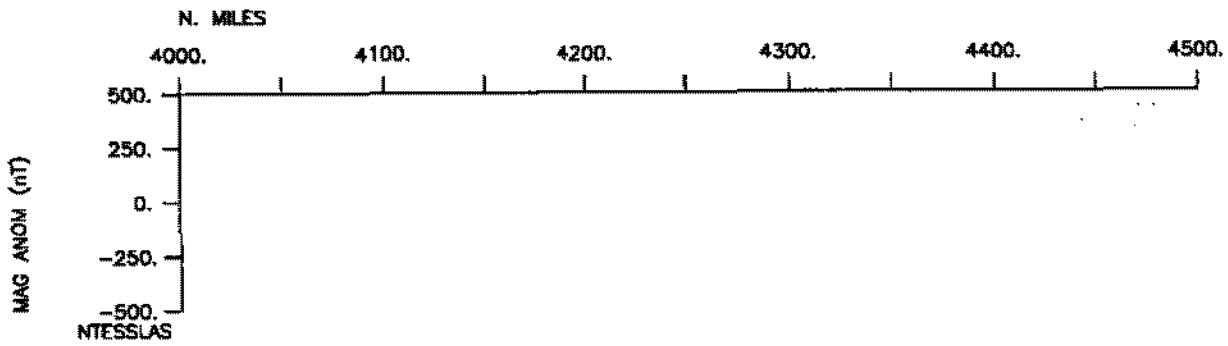
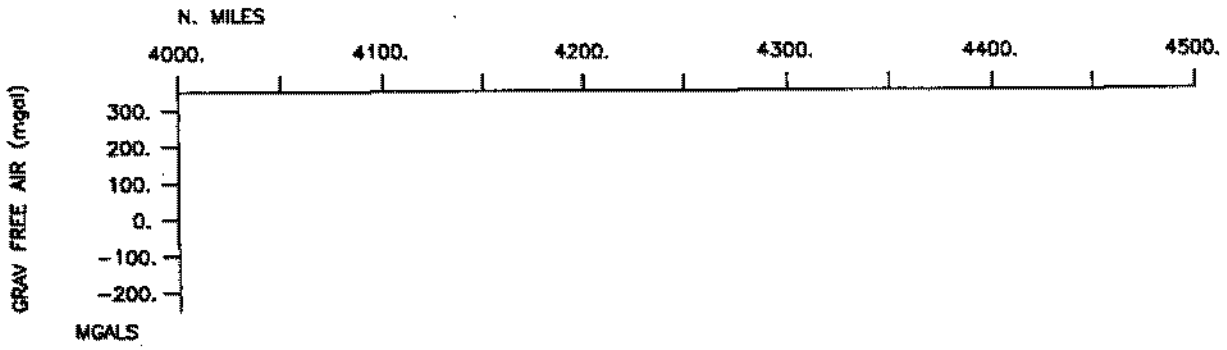


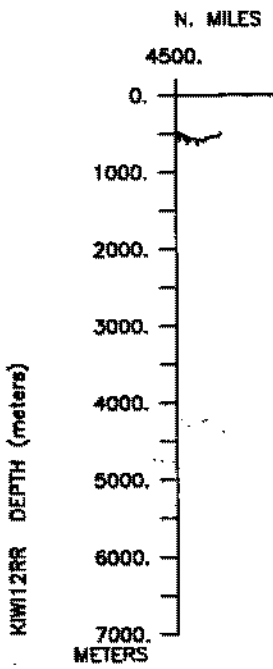
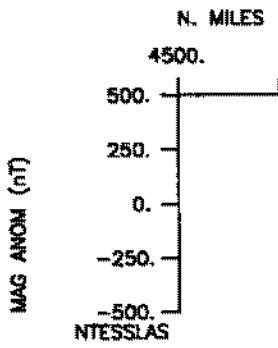
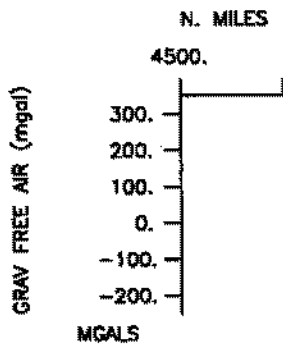












S.I.O. SAMPLE INDEX

KIWI EXPEDITION

LEG 12

(KIWI12RR)

R/V Revelle

(Issued July 1998)

Ports:

Pago Pago, American Samoa (9 May 1998)

to

Honolulu, Hawaii (29 May 1998)

Chief Scientist:

Bruce Luyendyk, Univ. of Calif. Santa Barbara

The Sample Index is a first level interdisciplinary listing of time, position, sample identification and disposition of all samples, records and measurements collected on this cruise leg. The index data are encoded at sea by the resident marine technician and processed on shore by the S.I.O. Geological Data Center shortly after the completion of the cruise leg.

Positions are interpolated on the basis of sample time by comparison to a single, edited navigation file. Samples beginning at one time and position and ending at another are entered on two consecutive lines. Disposition and sample type are represented by three and four character codes to permit future computer searches on these parameters. (Listings defining these codes are available from the Geological Data Center.)

GDC Cruise I.D.# 276

#*** Ports ***

0300	100598	0	LGPT B	Pago Pago, Amer. Samoa	14-17.00S	170-40.00W	f	KIWI12RR
1800	290598	0	LGPT E	Honolulu, Hawaii	21-18.00N	157-52.00W	f	KIWI12RR

#*** Personnel ***

#	*****NAME*****	*****TITLE*****	*****AFFILIATION*****	**CRID**
PECS UCB	Luyendyk, B.	Chief scientist	U.C. Santa Barbara	KIWI12RR
PEST UCB	Alex, C.	Student	U.C. Santa Barbara	KIWI12RR
PEST SIX	Aicher, J.	Student	Am. Samoa CC	KIWI12RR
PESP UCB	Birk, E.	Scientist	U.C. Santa Barbara	KIWI12RR
PESP SIX	Clayton, R.	Scientist	CalTech	KIWI12RR
PEST UCB	Davis, A.	Student	U.C. Santa Barbara	KIWI12RR
PEST SIX	Eisner, L.	Student	CalTech	KIWI12RR
PEST UCB	Evans, C.	Student	U.C. Santa Barbara	KIWI12RR
PEST UCB	Hoganson, T.	Student	U.C. Santa Barbara	KIWI12RR
PECT STS	Jacobson, D.	Computer tech	Scripps Institution	KIWI12RR
PEST SIX	Keller, W.	Student	CalTech	KIWI12RR
PEAT STS	Mogk, S.	Geophys engr	Scripps Institution	KIWI12RR
PEST UCB	Morgan, N.	Student	U.C. Santa Barbara	KIWI12RR
PEST UCB	Powers, K.	Student	U.C. Santa Barbara	KIWI12RR
PEST UCB	Schilla, M.	Student	U.C. Santa Barbara	KIWI12RR
PEST SIX	Toliniu, T.	Student	Am. Samoa CC	KIWI12RR
PEST SIX	Venkataraman, A.	Student	CalTech	KIWI12RR

#*** NOTES ***

#An 'X' in the (B)egin/(E)nd column following the sample code indicates no #sample or data recovered. A 'C' indicates continuation of data collection #from before the beginning or after the end of a particular leg. (Moored #bottom instruments, for example.) The number appearing in the columns #between the sample identifier and the disposition code, for many sample #entries, is the water depth in corrected meters.

#GMT	DDMMYY	SAMP	B	SAMPLE	DISP	CODE	LATITUDE	LONGITUDE	p	CRUISE
#TIME	DATE	TZ	CODE	E IDENTIFIER	CODE				c	LEG-SHIP

#*** Underway Data Curator - S. M. Smith ext. 42752 ***

#*** Log Books ***

0300	100598	0	LBUW B	Underway watch log	GDC	14-16.58S	170-41.15W	g	KIWI12RR
1800	290598	0	LBUW E	Underway watch log	GDC	21-18.96N	157-53.18W	g	KIWI12RR
0300	100598	0	LBSC B	Scientific log	UCB	14-16.58S	170-41.15W	g	KIWI12RR
1800	290598	0	LBSC E	Scientific log	UCB	21-18.96N	157-53.18W	g	KIWI12RR
2352	100598	0	LBSC B	Seismic log(CalTech)	SIX	12-40.16S	166-59.94W	g	KIWI12RR
0245	240598	0	LBSC E	Seismic log(CalTech)	SIX	5-42.37S	159-51.40W	g	KIWI12RR

#GMT	DDMMYY	SAMP	B	SAMPLE	DISP				p	CRUISE
#TIME	DATE	TZ	CODE	E IDENTIFIER	CODE	LATITUDE	LONGITUDE		c	LEG-SHIP
#-----	-----	---	----	-----	----	-----	-----	-----	---	-----
#*** Sea Beam Records (vertical beam and side scan) ***										
0747	100598	0	MBSR	B v.beam&sscan r-01	GDC	14-10.53S	169-55.63W	g		KIWI12RR
0230	240598	0	MBSR	E v.beam&sscan r-01	GDC	5-43.49S	159-51.87W	g		KIWI12RR
0300	240598	0	MBSR	B v.beam&sscan r-02	GDC	5-39.94S	159-51.09W	g		KIWI12RR
1644	290598	0	MBSR	E v.beam&sscan r-02	GDC	21-14.46N	157-52.80W	g		KIWI12RR
#*** Echo Sounder Records - Bathy 2000 ***										
0620	100598	0	DPR3	B pdr 3.5khz r-01	GDC	14-18.93S	170-12.30W	g		KIWI12RR
0420	210598	0	DPR3	E pdr 3.5khz r-01	GDC	11-45.70S	161-36.41W	g		KIWI12RR
0430	210598	0	DPR3	B pdr 3.5khz r-02	GDC	11-44.51S	161-35.69W	g		KIWI12RR
0230	240598	0	DPR3	E pdr 3.5khz r-02	GDC	5-43.49S	159-51.87W	g		KIWI12RR
0300	240598	0	DPR3	B pdr 3.5khz r-03	GDC	5-39.94S	159-51.09W	g		KIWI12RR
1644	290598	0	DPR3	E pdr 3.5khz r-03	GDC	21-14.46N	157-52.80W	g		KIWI12RR
#*** Seismic Reflection Records ***										
2352	100598	0	SPRS	B GI gun 8sec r-01	GDC	12-40.16S	166-59.94W	g		KIWI12RR
0128	140598	0	SPRS	E GI gun 8sec r-01	GDC	13-56.20S	163-52.49W	g		KIWI12RR
0128	140598	0	SPRS	B GI gun 8sec r-02	GDC	13-56.20S	163-52.49W	g		KIWI12RR
0755	190598	0	SPRS	E GI gun 8sec r-02	GDC	14-38.78S	159-41.16W	g		KIWI12RR
0658	200598	0	SPRS	B GI gun 8sec r-03	GDC	12-34.52S	159-05.97W	g		KIWI12RR
0230	240598	0	SPRS	E GI gun 8sec r-03	GDC	5-43.49S	159-51.87W	g		KIWI12RR
#*** Magnetics (Earth Total Field) Records ***										
0552	100598	0	MGDR	B digital magnetics	GDC	14-21.73S	170-17.74W	g		KIWI12RR
1318	230598	0	MGDR	E digital magnetics	GDC	7-23.86S	160-41.88W	g		KIWI12RR
#*** Seismic Reflection Line ***										
2352	100598	0	SPSL	B GI gun SCS/AD 1-01	GDC	12-40.16S	166-59.94W	g		KIWI12RR
0742	120598	0	SPSL	E GI gun SCS/AD 1-01	GDC	11-06.00S	163-23.99W	g		KIWI12RR
0834	120598	0	SPSL	B GI gun SCS AD 1-02	GDC	11-06.03S	163-24.02W	g		KIWI12RR
1250	130598	0	SPSL	E GI gun SCS/AD 1-02	GDC	14-20.52S	165-14.66W	g		KIWI12RR
1319	130598	0	SPSL	B GI gun SCS AD 1-03	GDC	14-21.90S	165-11.59W	g		KIWI12RR
2108	130598	0	SPSL	E GI gun SCS/AD 1-03	GDC	14-28.02S	164-08.83W	g		KIWI12RR
2109	130598	0	SPSL	B GI gun SCS AD 1-04	GDC	14-27.95S	164-08.71W	g		KIWI12RR
0300	150598	0	SPSL	E GI gun SCS/AD 1-04	GDC	11-38.65S	162-54.71W	g		KIWI12RR

#	GMT #TIME	DDMMYY DATE	TZ	SAMP CODE	B E	SAMPLE IDENTIFIER	DISP CODE	LATITUDE	LONGITUDE	p c	CRUISE LEG-SHIP
	0301	150598	0	SPSL	B	GI gun SCS AD 1-05	GDC	11-38.53S	162-54.65W	g	KIWI12RR
	1019	150598	0	SPSL	E	GI gun SCS/AD 1-05	GDC	12-20.63S	162-15.33W	g	KIWI12RR
	1022	150598	0	SPSL	B	GI gun SCS AD 1-06	GDC	12-21.02S	162-15.20W	g	KIWI12RR
	2150	160598	0	SPSL	E	GI gun SCS/AD 1-06	GDC	12-36.20S	161-41.38W	g	KIWI12RR
	2155	160598	0	SPSL	B	GI gun SCS AD 1-07	GDC	12-36.34S	161-40.77W	g	KIWI12RR
	1508	180598	0	SPSL	E	GI gun SCS/AD 1-07	GDC	13-41.43S	161-53.72W	g	KIWI12RR
	1509	180598	0	SPSL	B	GI gun SCS AD 1-08	GDC	13-41.57S	161-53.73W	g	KIWI12RR
	0755	190598	0	SPSL	E	GI gun SCS/AD 1-08	GDC	14-38.78S	159-41.16W	g	KIWI12RR
	0657	200598	0	SPSL	B	GI gun SCS AD 1-09	GDC	12-34.54S	159-05.87W	g	KIWI12RR
	0206	210598	0	SPSL	E	GI gun SCS/AD 1-09	GDC	12-01.27S	161-46.90W	g	KIWI12RR
	0209	210598	0	SPSL	B	GI gun SCS AD 1-10	GDC	12-00.91S	161-46.70W	g	KIWI12RR
	0700	220598	0	SPSL	E	GI gun SCS/AD 1-10	GDC	9-59.94S	159-36.20W	g	KIWI12RR
	0701	220598	0	SPSL	B	GI gun SCS AD 1-11	GDC	9-59.89S	159-36.33W	g	KIWI12RR
	0245	240598	0	SPSL	E	GI gun SCS/AD 1-11	GDC	5-42.37S	159-51.40W	g	KIWI12RR
*** Seismic Buoy ***											
	2300	110598	0	SBSD	B	SB 1 src=2GIguns	GDC	11-42.14S	164-23.89W	g	KIWI12RR
	2326	110598	0	SBSD	E	SB 1 src=2GIguns	GDC	11-40.36S	164-20.93W	g	KIWI12RR
	1935	120598	0	SBSD	B	SB 2 src=2GIguns	GDC	12-18.11S	164-05.14W	g	KIWI12RR
	2023	120598	0	SBSD	E	SB 2 src=2GIguns	GDC	12-23.81S	164-08.35W	g	KIWI12RR
	1319	130598	0	SBSD	B	SB 3 src=2GIguns	GDC	14-21.90S	165-11.59W	g	KIWI12RR
	1550	130598	0	SBSD	E	SB 3 src=2GIguns	GDC	14-23.95S	164-51.48W	g	KIWI12RR
	0314	150598	0	SBSD	B	SB 4 src=2GIguns	GDC	11-38.64S	162-53.31W	g	KIWI12RR
	0533	150598	0	SBSD	E	SB 4 src=2GIguns	GDC	11-52.27S	162-41.07W	g	KIWI12RR
	0533	150598	0	SBSD	B	SB 5 src=2GIguns	GDC	11-52.27S	162-41.07W	g	KIWI12RR
	0730	150598	0	SBSD	E	SB 5 src=2GIguns	GDC	12-03.89S	162-30.56W	g	KIWI12RR
	0730	150598	0	SBSD	B	SB 6 src=2GIguns	GDC	12-03.89S	162-30.56W	g	KIWI12RR
	1019	150598	0	SBSD	E	SB 6 src=2GIguns	GDC	12-20.63S	162-15.33W	g	KIWI12RR
	2200	160598	0	SBSD	B	SB 7 src=2GIguns	GDC	12-36.48S	161-40.15W	g	KIWI12RR
	0000	170598	0	SBSD	E	SB 7 src=2GIguns	GDC	12-40.38S	161-24.69W	g	KIWI12RR
	1000	180598	0	SBSD	B	SB 8 src=2GIguns	GDC	13-00.81S	161-36.35W	g	KIWI12RR
	1145	180598	0	SBSD	E	SB 8 src=2GIguns	GDC	13-14.49S	161-42.23W	g	KIWI12RR
# Expendable Bathythermographs ***											
	0414	110598	0	BTKP		MK-12 XBT # 49	GDC	12-40.25S	166-30.87W	g	KIWI12RR
	0857	190598	0	BTKP		MK-12 XBT # 51	GDC	14-35.99S	159-37.52W	g	KIWI12RR
	0557	200598	0	BTKP		MK-12 XBT # 52	GDC	12-41.82S	159-02.97W	g	KIWI12RR
	1834	210598	0	BTKP		MK-12 XBT # 53	GDC	10-45.54S	160-02.82W	g	KIWI12RR
#	End Sample Index										KIWI12RR