

# Cell Centered Database

University of California, San Diego

Maryann Martone

Microscopy Product #:3433 Phaeo28

For the most updated information, please visit

<http://ccdb.ucsd.edu/CCDBWebSite/main?event=displaySum&mpid=3433>



## Project Information:

PROJECT_ID	P1576
PROJECT_NAME	Chloroplast Ultrastructure of Phaeocystis antarctica in High and Low Light Conditions
PROJECT_DESCRIPTION	The three-dimensional morphological rearrangements for two conditions that mimic light conditions for the Antarctic summer and winter were studied in Phaeocystis antarctica Karsten
LEADER	Tiffany Moisan
FUNDING_AGENCY	National Aeronautics and Space Administration
PROJECT_START_DATE	
PROJECT_END_DATE	
COLLABORATORS	<a href="#">Gina Sosinsky</a> , Casey Buitenhuis, <a href="#">Mark Ellisman</a>
PUBLICATION1	<a href="#">Moisan, T., Ellisman, M. H., Buitenhuis, C.W., Sosinsky, G. E., (2006) Differences in Chloroplast Ultrastructure of Phaeocystis antarctica in High and Low Light Conditions, Marine Biology, 149 (6) 1281-1290</a>
PUBLICATION2	
PUBLICATION3	

## Experiment Information -

PURPOSE	To examine thylakoid membrane architecture under conditions of high light
TITLE	High light condition
EXPERIMENTER	Tiffany Moisan
EXPERIMENT_NAME	
EXPERIMENT_DATE	

Subject Information -	
GROUP_BY	Light level
SUBJECT_NAME	High light
FIXATION_METHOD_ID	
SCIENTIFIC_NAME	Phaeocystis antarctica
SPECIES	algae
STRAIN	Karsten
AGE	days
AGECLASS	6-8 generation cultured cells
ANIMAL_NAME	
LITTER_ID	
SEX	unspecified
VENDOR	
WEIGHT	grams

Tissue -	
ANATOMIC_LOCATION	
MICROTOME	Ultramicrotome
ORIENTATION	
THICKNESS	.25 um
TISSUE_PROD_STORAGE	
EXTERNAL_FILE_NAME	P1576_Phaeo1.xml
TISSUE_GROUP_TYPE	

Microscopy Product Information -	
MICROSCOPY_PRODUCT_ID	3433
IMAGE_BASENAME	Phaeo28
CREATE_DATE	
INSTRUMENT	JEOL 4000EX IVEM
MICROSCOPE_TYPE	IVEM
PLANE_COUNT	
PRODUCT_TYPE	SINGLE TILT
PURL	
SESSION_NAME	
TELESCIENCE_SRB	P1576/Experiment_3363/Subject_61/Tissue_75/Microscopy_3433
X_RESOLUTION	nm/pixels
Y_RESOLUTION	nm/pixels
XSIZE	
YSIZE	

## Protocol:

Culture conditions. Cultures of colonial *P. antarctica* (CCMP 1374) were grown semi-continuously for 5-8 generations in f/2 medium (Guillard and Ryther 1962) under continuous blue light at 4°C at irradiances of 14 and 259  $\mu\text{mol quanta m}^{-2} \text{s}^{-1}$ .

Specific growth rate. Specific growth rate was estimated by a linear regression of loge transformed daily determinations of in vivo

fluorescence intensity (n=2) measured with a Turner Model 10 fluorometer.

Sample preparation for electron microscopy. *P. antarctica* colonies were fixed on ice with a 2% glutaraldehyde and 1.3% osmium tetroxide solution for 30 minutes and rinsed in distilled water. Cells were dehydrated through a series of ethanol: water washes (25:75, 50:50, 75:25, 95:5), three 100% ethanol washes and finally through three washes of 100% acetone. Cells were pelleted and fixed in an Epon resin. The fixation process lends itself to a breakup of the colonial matrix and we were able to examine *P. antarctica* individual colonial cells using electron tomography. Embedded samples were cut on a Reichert-Jung Ultracut E microtome, transferred to 50/50 mesh copper clam grids, and stained with uranyl acetate and lead citrate. After staining, 20 nm colloidal gold particles (Sigma-Aldrich Chemicals, St. Louis, MO) were added to both sides of the grid to serve as fiducial markers for aligning tilted images. Individual colonial cells were observed at low magnification at 80kV on a JEOL 100CX to determine specimen quality and to select suitable samples.

Intermediate voltage electron microscopy. Sections of 0.25 (high light condition) and 0.75  $\mu\text{m}$  (low light condition) in thickness were cut, post-stained with uranyl acetate and lead citrate and examined at 400 kV on a JEOL 4000 intermediate voltage electron microscope. Tilt series consisting of 61 images (-60 $\circ$  to 60 $\circ$  at 2 $\circ$  tilt increments) were collected at either 12-15,000 magnification (low light condition) or 20-30,000 magnification (high light condition). Images were collected on film (Kodak 4489 electron image film) or on a Slow-Scan Cooled CCD camera (Fan et al. 2000). Sections were pre-irradiated before each tilt series in order to limit anisotropic specimen thinning during specimen examination (Luther 1992). The illumination was held constant using parallel electron beam conditions and the image was maximized for each exposure. A computer-controlled goniometer was used to accurately tilt the specimen. For tilt series acquired on film, digitization was accomplished using a Photometrics 1024 x 1024 Cooled CCD camera containing a 19- $\mu\text{m}^2$  pixel with sampling sizes of  $\sim$ 50-85  $\mu\text{m}$  pixel<sup>-1</sup>.

Single-axis tilt series tomographic reconstruction methodology. Tilted images were aligned with each other by use of a set of common fiducial marks consisting of 20 nm colloidal gold beads. Reconstruction methods follow that those of Perkins et al. (1997). The common fiducial marks on each image of the tilt series were aligned using the program XFIDO. Alignment of the tilt series was initially calculated using a least-squares algorithm through the z-direction of the tilt series using the program SAXALIGN. After initial alignment, volumes were computed using either a standard r-weighted simple back projection algorithm or a Globus enabled parallelized version of this algorithm that considerably speeded up these computations (Smallen et al. 2000).

The 3D reconstruction is viewed and analyzed with ANALYZE AVW (Biomedical Imaging Resource, Mayo Clinic, <http://www.mayo.edu/bir/Software/Analyze/Analyze.html>). Individual thylakoids, pyrenoids, and chloroplast membranes were traced on the electron tomographic reconstruction using the program XVOXTRACE. The resolution of the organelles was estimated to be  $\sim$ 10 nm (based on detectability of features and pixel sampling criteria). All computations and graphics were performed on either Silicon Graphics or Sun workstations.

Image Type -	
SINGLE_TILT_IMAGE_SEQ_ID	6033
TILT_INCREMENT	2 degrees
SINGLET_DESC	Specimen was pre-irradiated prior to imaging.
SINGLE_TILT_IMAGE_SEQ_ID	6033
TILT_INCREMENT	2 degrees
RANGE_MAX	60 degrees
RANGE_MIN	-60 degrees
SINGLET_DESC	Specimen was pre-irradiated prior to imaging.

Specimen Description -	
ANATOMICAL_DETAIL	6033
ATLAS_COORD	, ,
CELL_TYPE	algae
STRUCTURE	chloroplast

**Electron Microscopy Product -**

EM\_PRODUCT\_ID 6054

ACCELERATING\_VOLTAGE 400 KeV

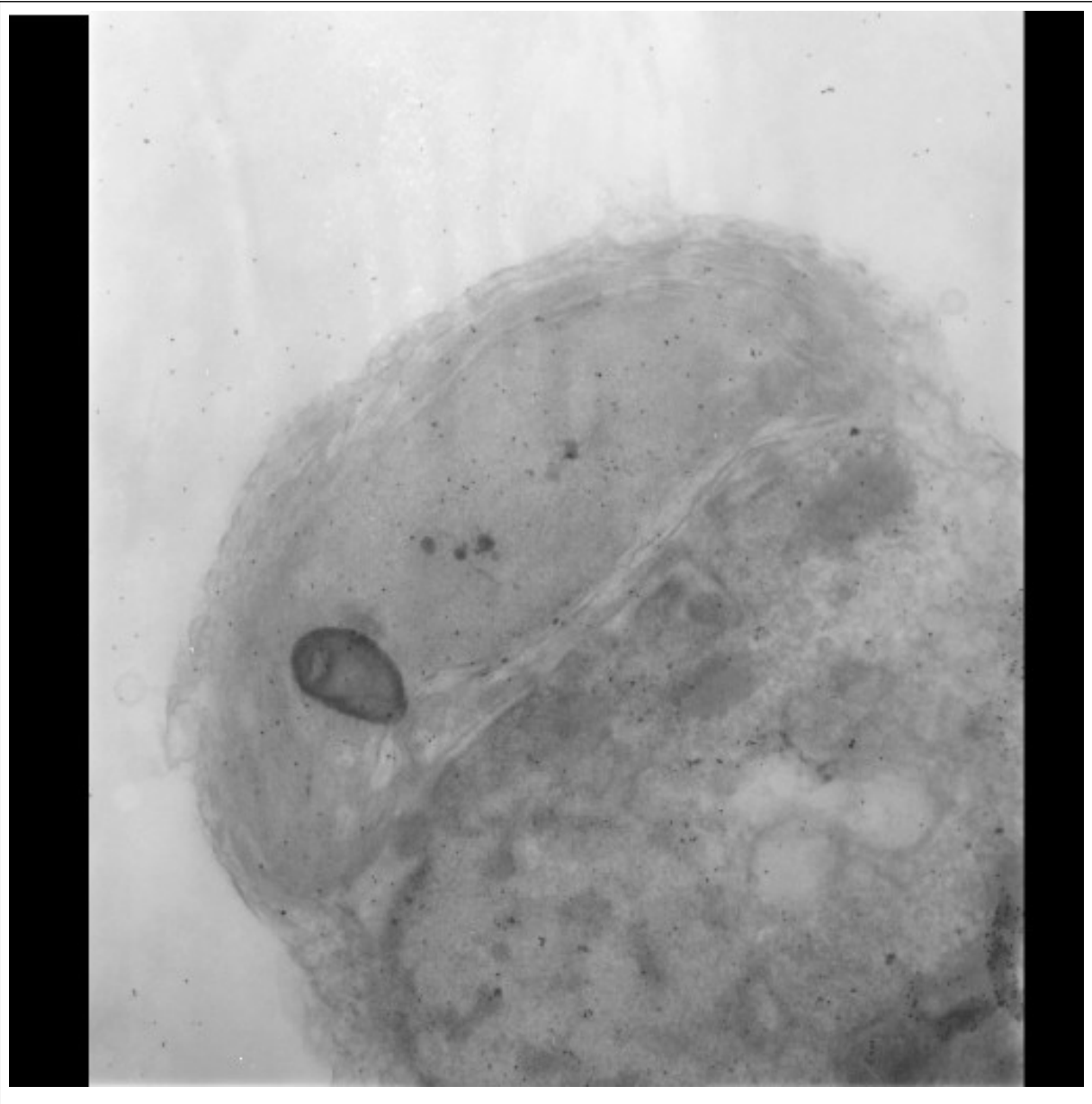
EMBEDDING\_MEDIUM resin

MAGNIFICATION 20000

RECORDING\_MEDIUM film

# Raw 2D Image

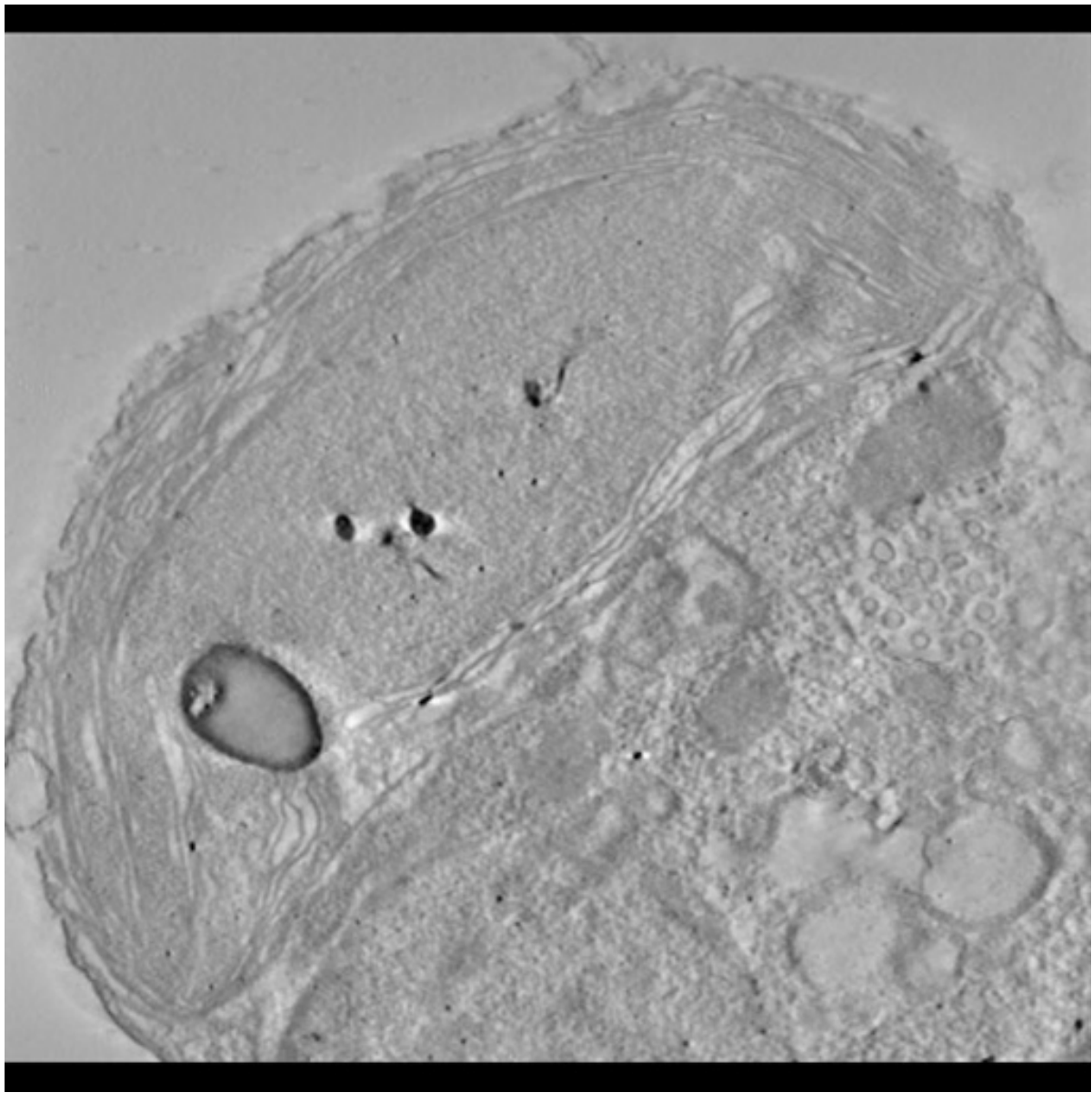
Raw Low Resolution 2D Image -



Raw 2D Image -	
IMAGE2D_ID	6035
BIT_DEPTH	16 bit
IMAGE_DESC	Zip file containing the full resolution digitized unaligned images (*.f), along with the cropped and aligned images used for reconstruction (*.crop), the file containing the fiducial marks (*.fido) and the list of angles used for reconstruction (*.ang).
IMAGE_FILE_FORMAT	suprim
IMAGE_FILE_NAME	/telescience/home/CCDB_DATA_USER.portal/P1576/Experiment_3363/Subject_61/Tissue_75/Microscopy_3433/phaeo28_img.jpg
MAGNIFICATION	20000 X
RAW_DATA_FILE	/telescience/home/CCDB_DATA_USER.portal/P1576/Experiment_3363/Subject_61/Tissue_75/Microscopy_3433/phaeo28_img.zip
THUMBNAIL_DESC	Zero degree tilt image through a 0.25 um thick section of blue green algae grown under high light conditions and imaged using intermediate voltage electron microscopy.
THUMBNAIL_FILE	P1576/phaeo28_img_thmb.jpg
X_RESOLUTION	.005 um/pixel
Y_RESOLUTION	.005 um/pixel
X_SIZE	1024 pixels
Y_SIZE	1024 pixels

# Reconstruction

Reconstruction Image -

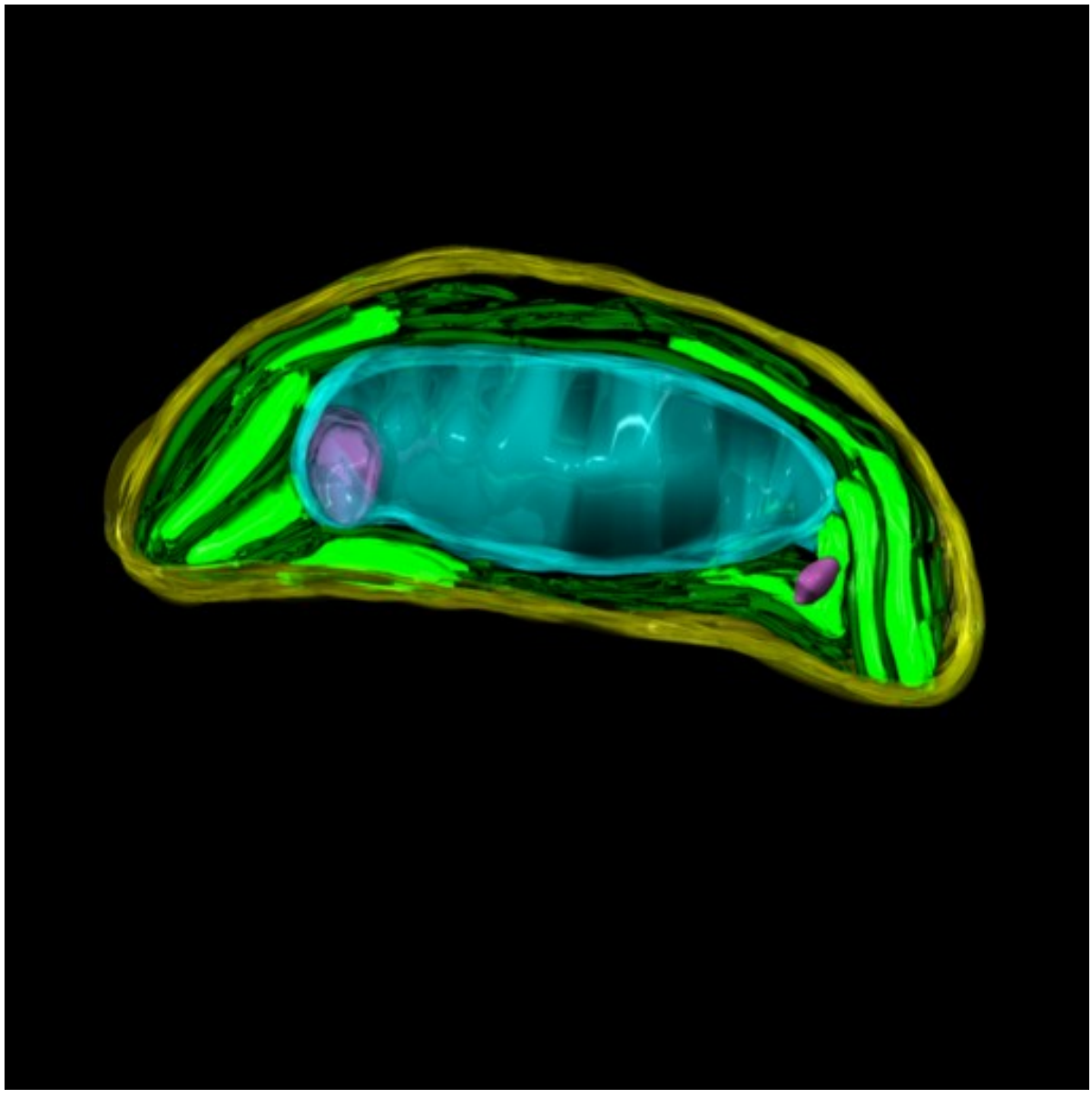


Reconstruction -	
RECONSTRUCTION3D_ID	6032
ALIGNMENT_METHOD	manual
ALIGNMENT_PROGRAM	xfido, saxalign
CROPPING_COORDINATE1	,
CROPPING_COORDINATE2	,
RECON_ALGORITHM	R-weighted back projection
RECON_DATE	2002-01-30 00:00:00.0
RECON_DESC	Zip file containing the tomographic volume in Analyze 7.5 format (phaeo28_obl_sub.img/hdr).
RECON_PROGRAM	Suprim
RECON_TYPE	single tilt electron tomography
VOLUME_DIMENSION	694, 756, 41
VOLUME_NAME	/telescience/home/CCDB_DATA_USER.portal/P1576/Experiment_3363/Subject_61/Tissue_75/Microscopy_3433/phaeo28_vol.zip
VOXEL_SCALE	, ,
RECONSTRUCTION_IMAGES_ID	6032
RECON_IMAGE_DESC	Single computed slice through a tomographic volume of a blue green algae grown under high light conditions.
RECON_FILE_NAME	/telescience/home/CCDB_DATA_USER.portal/P1576/Experiment_3363/Subject_61/Tissue_75/Microscopy_3433/phaeo28_vol.jpg
VOLUME_THUMBNAIL	P1576/phaeo28_vol_thmb.jpg
ANIMATION_FILE	/telescience/home/CCDB_DATA_USER.portal/P1576/Experiment_3363/Subject_61/Tissue_75/Microscopy_3433/phaeo28_vol.mov
ANIMATION_FILE_FORMAT	Quicktime
ANIMATION_DESC	Animation through the computed slices of a tomographic volume of a blue green algae grown under high light conditions. Dark particles are 20 nm gold particles that were placed on the surface of the section to serve as fiducial marks.



# Segmentation

Segmentation Image -



Segmentation -	
SEGMENTED_OBJECT_ID	6049
DISPLAY_IMAGE_DESC	Surface rendering of segmented chloroplast and its internal structures from a blue green algae grown under high light conditions. Gold= chloroplast outer membrane; dark green = individual thylakoid membranes; bright green = stacks of thylakoid membranes that were not individually traced; blue = pyrenoid; purple = presumed lipid droplets.
DOWNLOADABLE_FILE_DESC	Zip file containing Xvoxtrace file with manual tracings, surfaced segmented objects and random snapshots of the rendered objects. Multiple Xvoxtrace files are included, one set with the prefix "fixed", presumably reflecting the correction of some of the original tracings. Surfaced objects are included in both Synu (*.synu) and Amira (*.iv) formats, along with the ancillary files required for viewing in these programs (Viewdata for Synu and .hx for Amira). Also included are multiple snapshots of the rendered objects in .ppm format.
IS_MANUAL	Y
LABELING_RANK	none
NUMBER_OF_OBJECT	0
OBJECT_DESC	stacks of thylakoid membranes
OBJECT_NAME	bulkthylakoids
OBJECT_TYPE	surface
SEGMENTED_OBJ_2D_IMAGE	/telescience/home/CCDB_DATA_USER.portal/P1576/Experiment_3363/Subject_61/Tissue_75/Microscopy_3433/phaeo28_seg.jpg
SEGMENTED_OBJECT_ID	6049
SEGMENT_PERSON_NAME	Casey Buitenhuys
SEG_DESC	Manual segmentation of the chloroplast membrane and thylakoid membranes using Xvoxtrace 2.1 followed by surfacing with Synu. Synu surfaces were also converted into iv format for viewing with Amira.
SEG_FILE_NAME	/telescience/home/CCDB_DATA_USER.portal/P1576/Experiment_3363/Subject_61/Tissue_75/Microscopy_3433/phaeo28_seg.zip
THUMBNAIL	P1576/phaeo28_seg_thmb.jpg
SEGMENTED_OBJECT_ID	6052
DISPLAY_IMAGE_DESC	Surface rendering of segmented chloroplast and its internal structures from a blue green algae grown under high light conditions. Gold= chloroplast outer membrane; dark green = individual thylakoid membranes; bright green = stacks of thylakoid membranes that were not individually traced; blue = pyrenoid; purple = presumed lipid droplets.
DOWNLOADABLE_FILE_DESC	Zip file containing Xvoxtrace file with manual tracings, surfaced segmented objects and random snapshots of the rendered objects. Multiple Xvoxtrace files are included, one set with the prefix "fixed", presumably reflecting the correction of some of the original tracings. Surfaced objects are included in both Synu (*.synu) and Amira (*.iv) formats, along with the ancillary files required for viewing in these programs (Viewdata for Synu and .hx for Amira). Also included are multiple snapshots of the rendered objects in .ppm format.
IS_MANUAL	Y

Segmentation -	
LABELING_RANK	none
NUMBER_OF_OBJECT	1
OBJECT_DESC	pyrenoid
OBJECT_NAME	pyrenoid
OBJECT_TYPE	surface
SEGMENTED_OBJ_2D_IMAGE	/telescience/home/CCDB_DATA_USER.portal/P1576/Experiment_3363/Subject_61/Tissue_75/Microscopy_3433/phaeo28_seg.jpg
SEGMENTED_OBJECT_ID	6052
SEGMENT_PERSON_NAME	Casey Buitenhuis
SEG_DESC	Manual segmentation of the chloroplast membrane and thylakoid membranes using Xvoxtrace 2.1 followed by surfacing with Synu. Synu surfaces were also converted into iv format for viewing with Amira.
SEG_FILE_NAME	/telescience/home/CCDB_DATA_USER.portal/P1576/Experiment_3363/Subject_61/Tissue_75/Microscopy_3433/phaeo28_seg.zip
THUMBNAIL	P1576/phaeo28_seg_thmb.jpg
SEGMENTED_OBJECT_ID	6051
DISPLAY_IMAGE_DESC	Surface rendering of segmented chloroplast and its internal structures from a blue green algae grown under high light conditions. Gold= chloroplast outer membrane; dark green = individual thylakoid membranes; bright green = stacks of thylakoid membranes that were not individually traced; blue = pyrenoid; purple = presumed lipid droplets.
DOWNLOADABLE_FILE_DESC	Zip file containing Xvoxtrace file with manual tracings, surfaced segmented objects and random snapshots of the rendered objects. Multiple Xvoxtrace files are included, one set with the prefix "fixed", presumably reflecting the correction of some of the original tracings. Surfaced objects are included in both Synu (*.synu) and Amira (*.iv) formats, along with the ancillary files required for viewing in these programs (Viewdata for Synu and .hx for Amira). Also included are multiple snapshots of the rendered objects in .ppm format.
IS_MANUAL	Y
LABELING_RANK	none
NUMBER_OF_OBJECT	1
OBJECT_DESC	chloroplast outer membrane
OBJECT_NAME	membrane
OBJECT_TYPE	surface
SEGMENTED_OBJ_2D_IMAGE	/telescience/home/CCDB_DATA_USER.portal/P1576/Experiment_3363/Subject_61/Tissue_75/Microscopy_3433/phaeo28_seg.jpg
SEGMENTED_OBJECT_ID	6051
SEGMENT_PERSON_NAME	Casey Buitenhuis
SEG_DESC	Manual segmentation of the chloroplast membrane and thylakoid membranes using Xvoxtrace 2.1 followed by surfacing with Synu. Synu surfaces were also converted into iv format for viewing with Amira.
SEG_FILE_NAME	/telescience/home/CCDB_DATA_USER.portal/P1576/Experiment_3363/Subject_61/Tissue_75/Microscopy_3433/phaeo28_seg.zip

Segmentation -	
THUMBNAIL	P1576/phaeo28_seg_thmb.jpg
SEGMENTED_OBJECT_ID	6050
DISPLAY_IMAGE_DESC	Surface rendering of segmented chloroplast and its internal structures from a blue green algae grown under high light conditions. Gold= chloroplast outer membrane; dark green = individual thylakoid membranes; bright green = stacks of thylakoid membranes that were not individually traced; blue = pyrenoid; purple = presumed lipid droplets.
DOWNLOADABLE_FILE_DESC	Zip file containing Xvoxtrace file with manual tracings, surfaced segmented objects and random snapshots of the rendered objects. Multiple Xvoxtrace files are included, one set with the prefix "fixed", presumably reflecting the correction of some of the original tracings. Surfaced objects are included in both Synu (*.synu) and Amira (*.iv) formats, along with the ancillary files required for viewing in these programs (Viewdata for Synu and .hx for Amira). Also included are multiple snapshots of the rendered objects in .ppm format.
IS_MANUAL	Y
LABELING_RANK	none
NUMBER_OF_OBJECT	2
OBJECT_DESC	lipid droplets
OBJECT_NAME	lipid
OBJECT_TYPE	surface
SEGMENTED_OBJ_2D_IMAGE	/telescience/home/CCDB_DATA_USER.portal/P1576/Experiment_3363/Subject_61/Tissue_75/Microscopy_3433/phaeo28_seg.jpg
SEGMENTED_OBJECT_ID	6050
SEGMENT_PERSON_NAME	Casey Buitenhuys
SEG_DESC	Manual segmentation of the chloroplast membrane and thylakoid membranes using Xvoxtrace 2.1 followed by surfacing with Synu. Synu surfaces were also converted into iv format for viewing with Amira.
SEG_FILE_NAME	/telescience/home/CCDB_DATA_USER.portal/P1576/Experiment_3363/Subject_61/Tissue_75/Microscopy_3433/phaeo28_seg.zip
THUMBNAIL	P1576/phaeo28_seg_thmb.jpg
SEGMENTED_OBJECT_ID	6053
DISPLAY_IMAGE_DESC	Surface rendering of segmented chloroplast and its internal structures from a blue green algae grown under high light conditions. Gold= chloroplast outer membrane; dark green = individual thylakoid membranes; bright green = stacks of thylakoid membranes that were not individually traced; blue = pyrenoid; purple = presumed lipid droplets.
DOWNLOADABLE_FILE_DESC	Zip file containing Xvoxtrace file with manual tracings, surfaced segmented objects and random snapshots of the rendered objects. Multiple Xvoxtrace files are included, one set with the prefix "fixed", presumably reflecting the correction of some of the original tracings. Surfaced objects are included in both Synu (*.synu) and Amira (*.iv) formats, along with the ancillary files required for viewing in these programs (Viewdata for Synu and .hx for Amira). Also included are multiple snapshots of the rendered objects in .ppm format.
IS_MANUAL	Y

**Segmentation -**

LABELING_RANK	none
NUMBER_OF_OBJECT	0
OBJECT_DESC	thylakoid membranes
OBJECT_NAME	thylakoid
OBJECT_TYPE	surface
SEGMENTED_OBJ_2D_IMAGE	/telescience/home/CCDB_DATA_USER.portal/P1576/Experiment_3363/Subject_61/Tissue_75/Microscopy_3433/phaeo28_seg.jpg
SEGMENTED_OBJECT_ID	6053
SEGMENT_PERSON_NAME	Casey Buitenhuys
SEG_DESC	Manual segmentation of the chloroplast membrane and thylakoid membranes using Xvoxtrace 2.1 followed by surfacing with Synu. Synu surfaces were also converted into iv format for viewing with Amira.
SEG_FILE_NAME	/telescience/home/CCDB_DATA_USER.portal/P1576/Experiment_3363/Subject_61/Tissue_75/Microscopy_3433/phaeo28_seg.zip
THUMBNAIL	P1576/phaeo28_seg_thmb.jpg

## **USER AGREEMENT**

Data Sharing and Citation Policy: The mission of the CCDB is to promote data sharing among scientists interested in cellular and subcellular anatomy and in developing computer algorithms for 3D reconstruction and modeling of such data. Data sets may be viewed or shared at the discretion of the author of the data. In some cases, the data may be freely viewed and downloaded without contacting the original author while in other cases, permission of the author may have to be obtained prior to downloading the data. In either case, failure to cite or give proper credit to the original authors who collected these data in subsequent published articles or presentations is a material breach of this User Agreement. CCDB requires all researchers re-analyzing these published data via the CCDB access to reference the original published article and the CCDB. An example of an appropriate acknowledgement is provided on the CCDB web site. CCDB is not in a position to police every intended use of these data. The scientific community will self-police the compliance of this contractual obligation.

## **DISCLAIMER**

THE DATA PROVIDED BY THE CCDB ARE FREELY DISTRIBUTED AND WITHOUT CHARGE. THESE DATA ARE PROVIDED BY THE CCDB "AS IS" AND WITHOUT ANY EXPRESS OR IMPLIED WARRANTIES, INCLUDING, BUT NOT LIMITED TO, THE IMPLIED WARRANTIES OF MERCHANTABILITY, FITNESS FOR A PARTICULAR PURPOSE, OR NON-INFRINGEMENT, TO ANY THIRD PARTY RIGHTS. IN NO EVENT SHALL THE CCDB BE LIABLE FOR ANY DIRECT, INDIRECT, INCIDENTAL, SPECIAL, EXEMPLARY, OR CONSEQUENTIAL DAMAGES (INCLUDING, BUT NOT LIMITED TO, PROCUREMENT OF SUBSTITUTE GOODS OR SERVICES; LOSS OF USE, DATA, OR PROFITS; OR BUSINESS INTERRUPTION) HOWEVER CAUSED AND ON ANY THEORY OF LIABILITY, WHETHER IN CONTRACT, STRICT LIABILITY, OR TORT (INCLUDING NEGLIGENCE OR OTHERWISE) ARISING IN ANY WAY OUT OF THE USE OF THESE DATA, EVEN IF ADVISED OF THE POSSIBILITY OF SUCH DAMAGE.

## **USER NOTIFICATION**

For large size image data, it will take several minutes to download, please be patient. Thanks!

## **ACKNOWLEDGEMENT**

Data used from the CCDB should be appropriately referenced, including both the author of the data and the CCDB. If the data were from a published study, the reference is included in the database record. The following reference should be cited for the CCDB:

Martone, M. E., Gupta, A., Wong, M., Qian, X., Sosinsky, G., Ludaescher, B., and Ellisman, M. H. A cell centered database for electron tomographic data. *J. Struct. Biology* 138: 145-155, 2002.

In addition, the support for the Cell Centered Database should be included in the acknowledgement section of any publication: The Cell Centered Database is supported by NIH grants from NCRR RR04050, RR RR08605 and the Human Brain Project DA016602 from the National Institute on Drug Abuse, the National Institute of Biomedical Imaging and Bioengineering and the National Institute of Mental Health, and NSF grants supporting the National Partnership for Advanced Computational Infrastructure NSF-ASC 97-5249 and MCB-9728338.

Maryann Martone