

*Report and Index of
Underway Marine Geophysical Data*

Tui Malila

Leg 02

(TUIM02MV)

R/V Melville

(Issued Mar 2005)

Ports:

Honolulu, HI (28-Jan-2005)

to

Papeete, Tahiti (05-Feb-2005)

Chief Scientist: Transit-No Chief Scientist on board

none

none

Computer Tech - Boguslaw Malecki

Resident Tech - None on board

Post-Cruise processing and report preparation by the
Shipboard Technical Support Group,
Scripps Institution of Oceanography
La Jolla, CA 92093-0223

Note: *This is an index of underway geophysical data edited and processed after the completion of the leg and is intended primarily for informal use within the institution. This document is not to be reproduced or distributed outside Scripps without prior approval of the chief scientist or Shipboard Technical Support, Scripps Institution of Oceanography, La Jolla, California 92093-0223*

STS Cruise ID#306

Report and Index of Navigation and Underway Geophysical Data

Contents:

Index Chart - give track of cruise leg, dates, ports.

Track Charts - annotated with dates and hour ticks.

Profiles - depth, magnetic and gravity free air anomaly vs. distance.

Sample Index - list of begin/end times and positions of all underway records as well as samples and measurements from other disciplines collected on the leg.

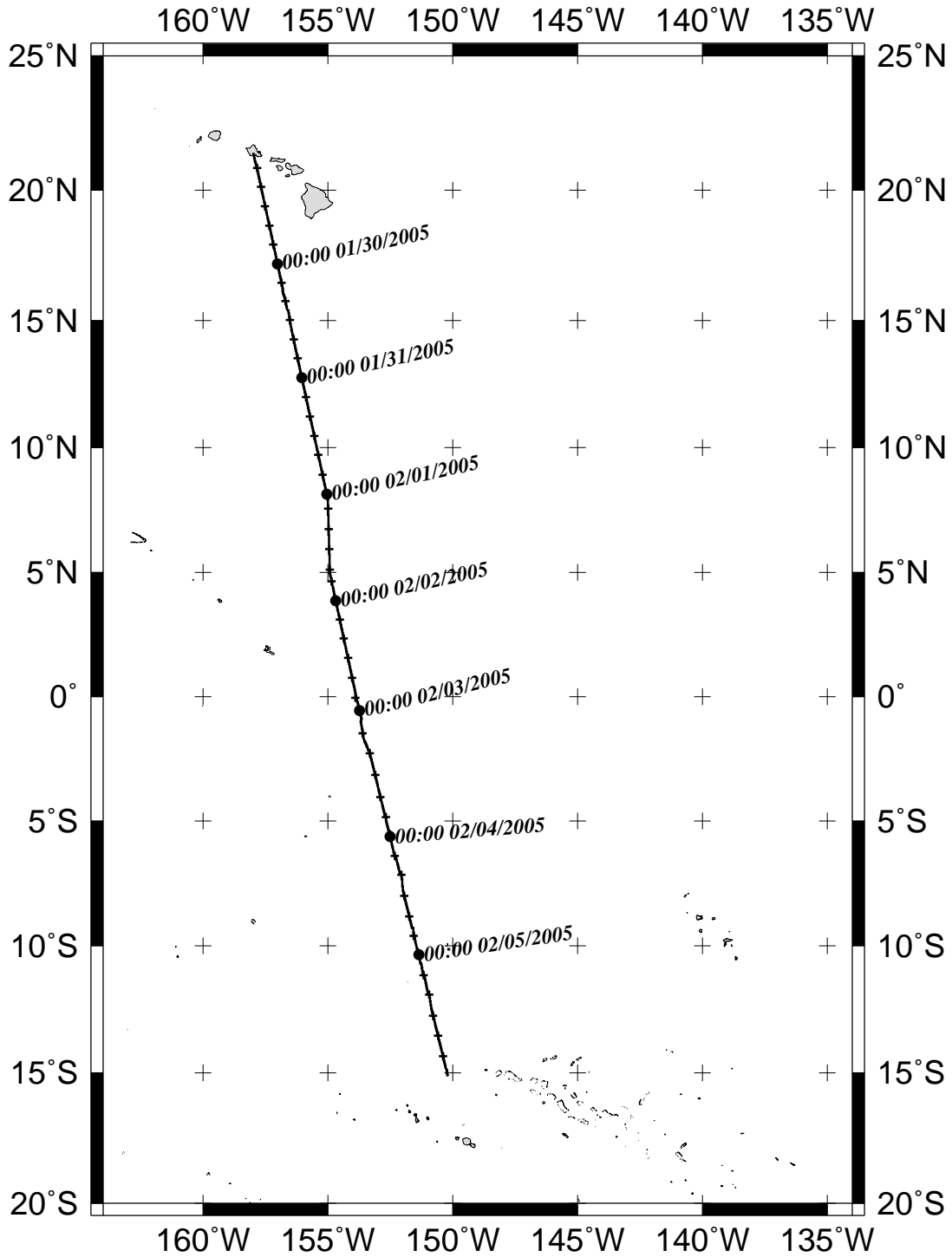
Note:

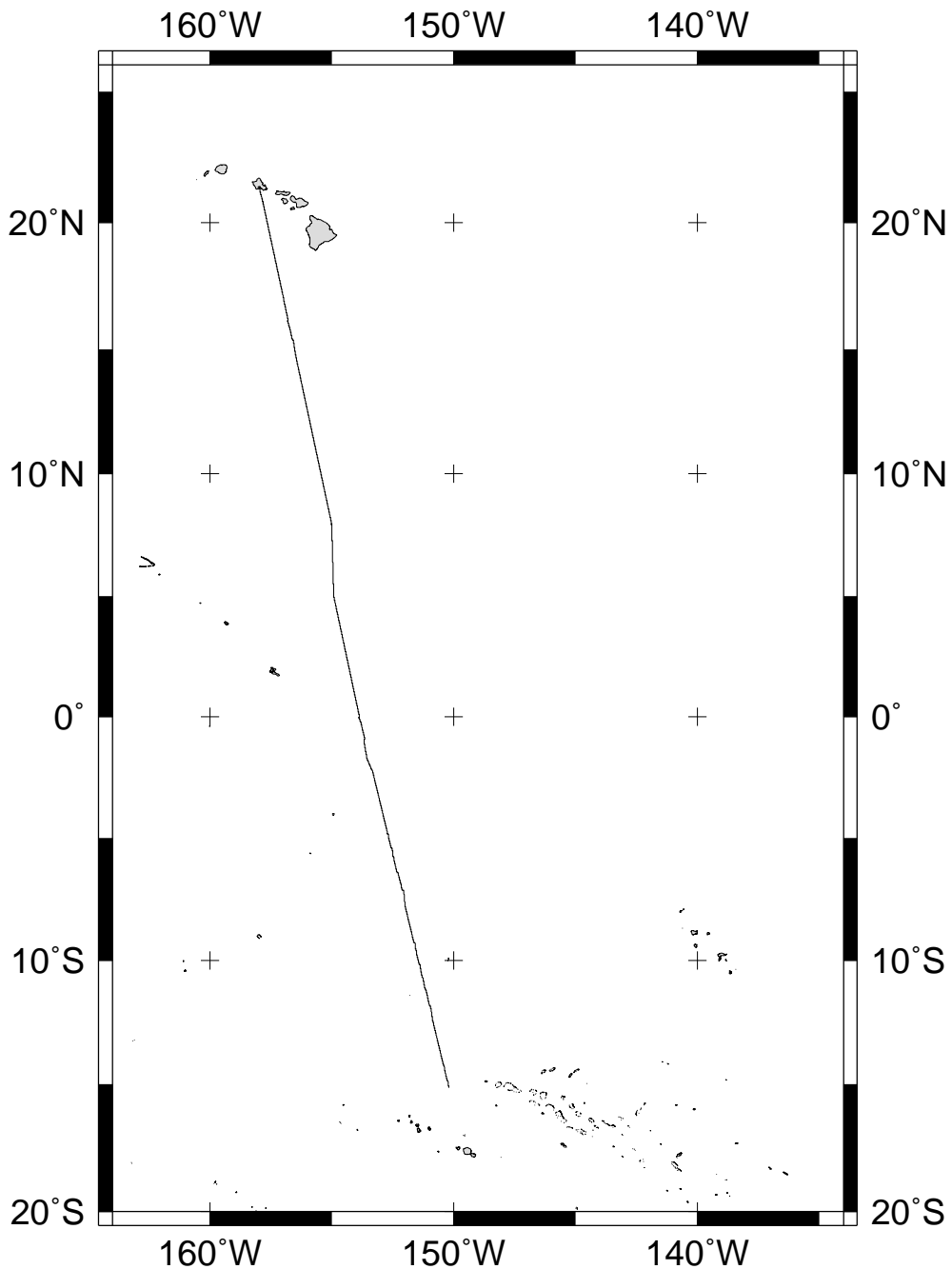
For information on the availability of this current digital data as well as archived digital data contact:

Stephen P. Miller
Geological Data Center
Scripps Institution of Oceanography
La Jolla, California 92093-0220
Phone: (858) 534-1898
Internet email: spmiller@ucsd.edu; or his website: <http://SIOExplorer@ucsd.edu>

Rev 05/2002

TUIM02MV





TUI MALILA EXPEDITION LEG 2 (TUIM02MV)

=====

CHIEF SCIENTIST: Transit-No Chief Scientist on board

PORTS: Honolulu, Hawaii - Papeete, Tahiti

DATES: 29 January - 5 February 2005

SHIP: R/V Melville

TOTAL MILEAGE OF UNDERWAY DATA COLLECTED

Cruise-2266 miles

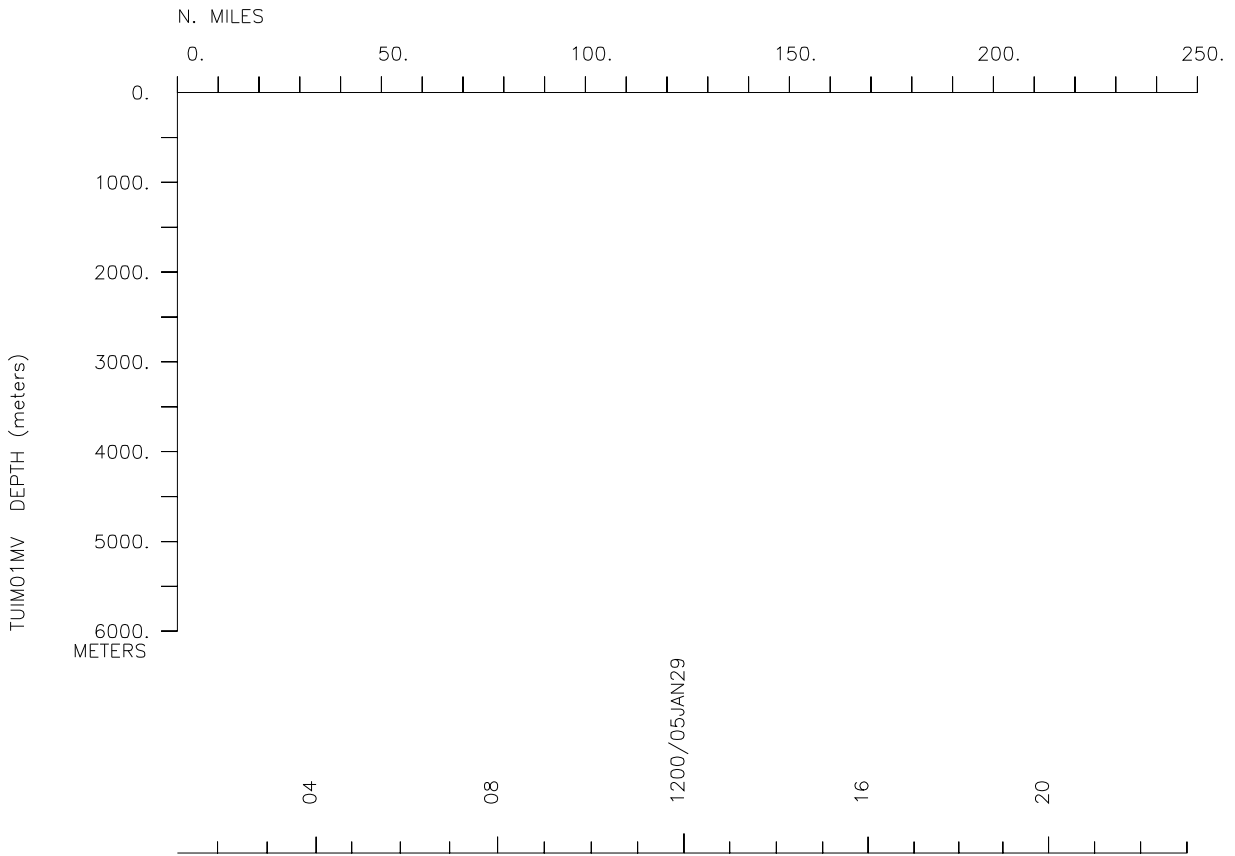
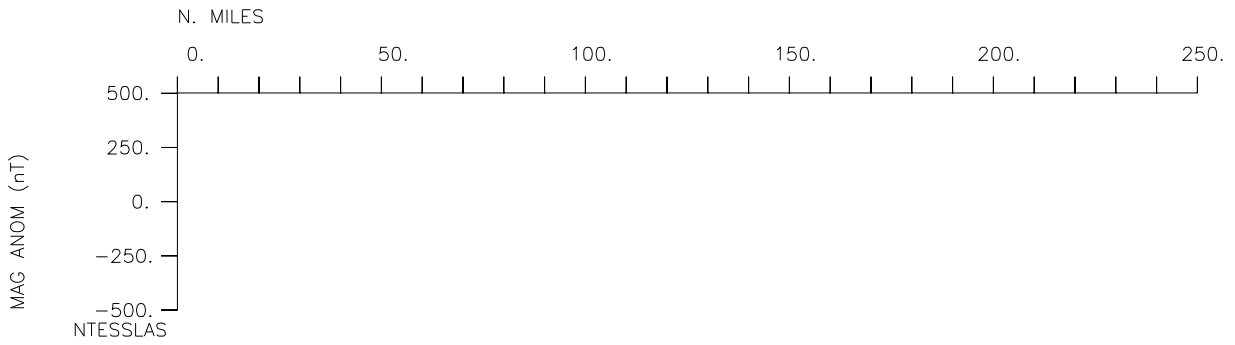
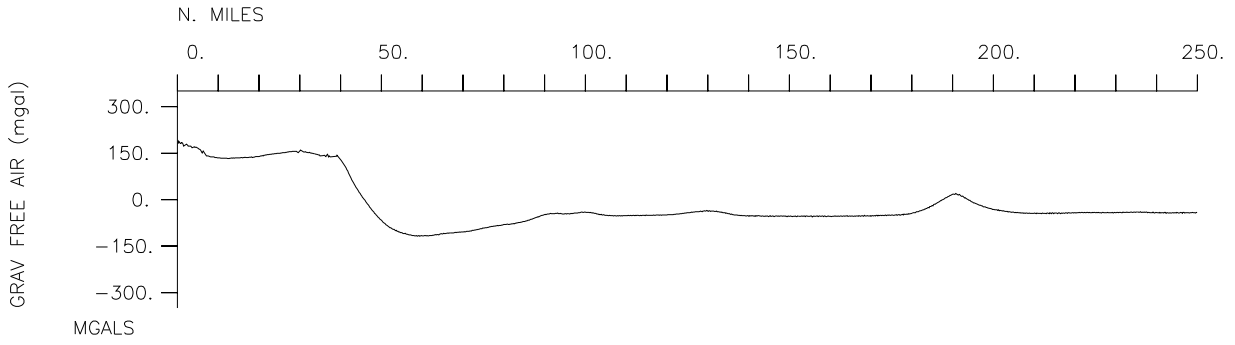
Magnetics-none collected

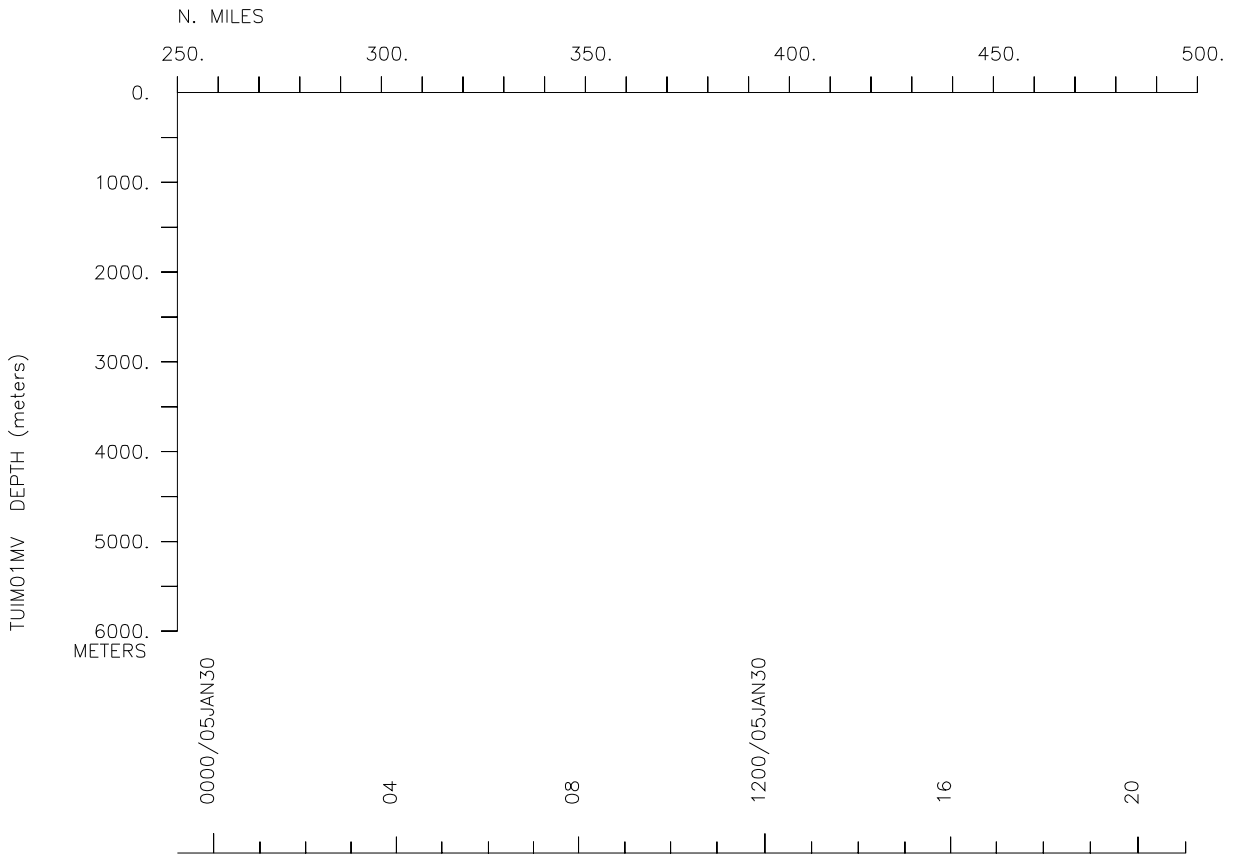
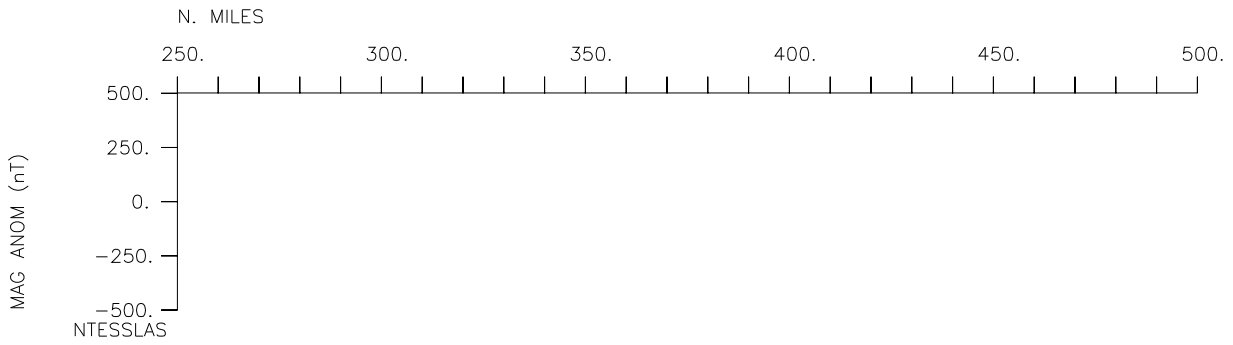
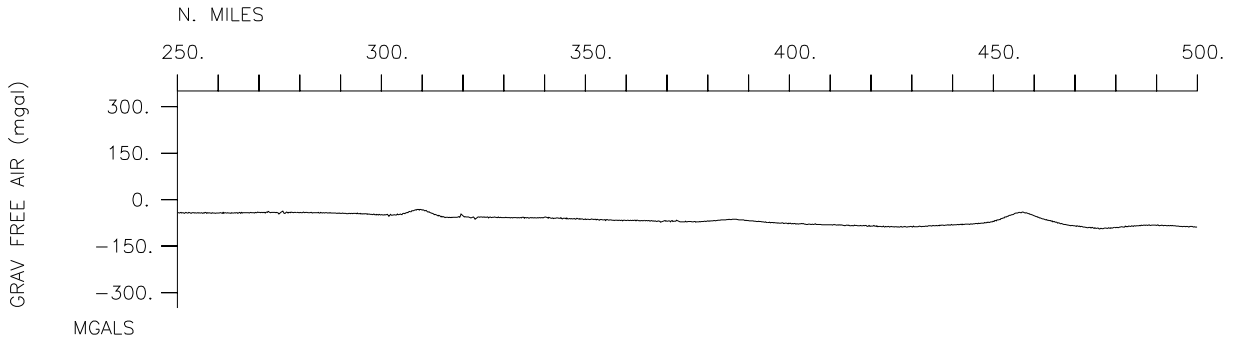
Bathymetry-608 miles

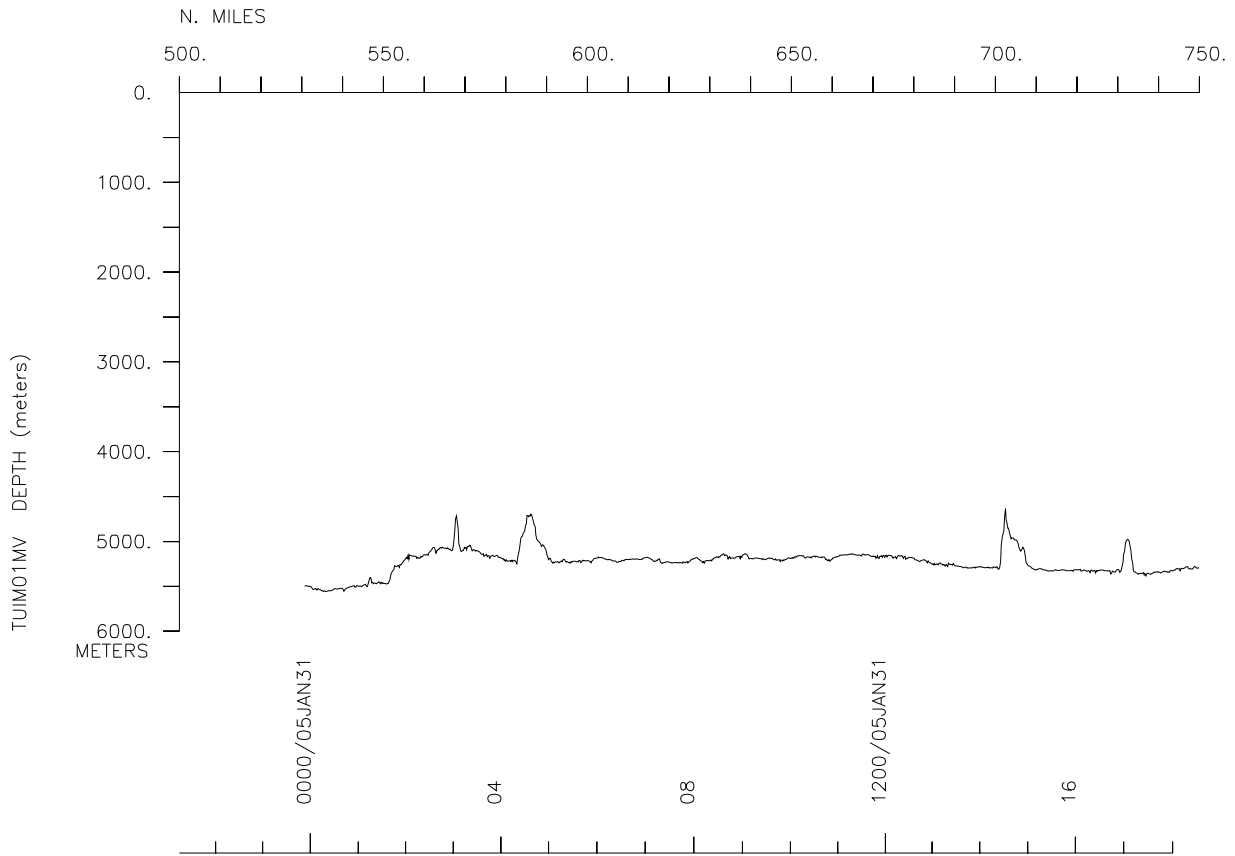
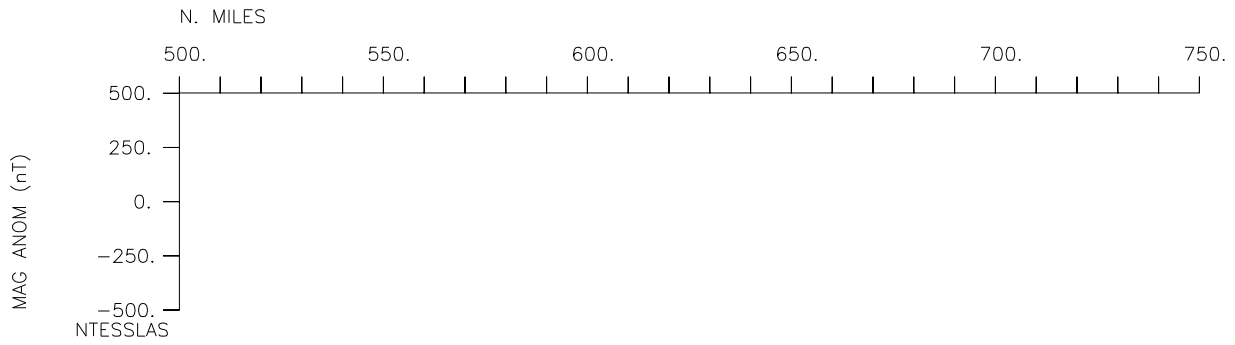
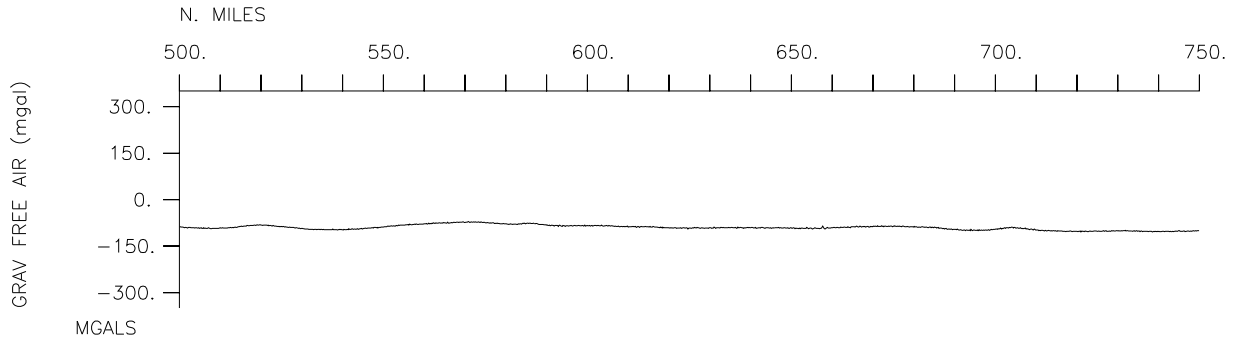
Seismic Reflection-none collected

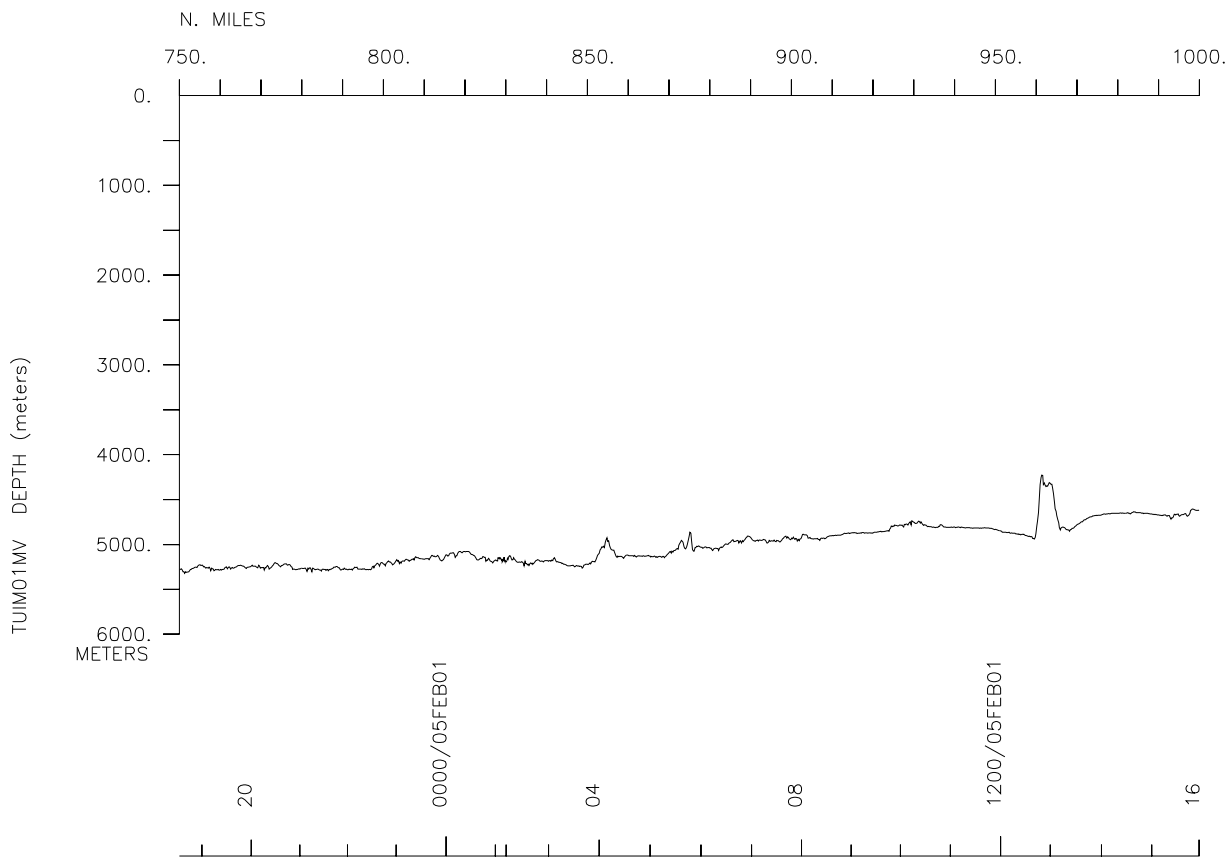
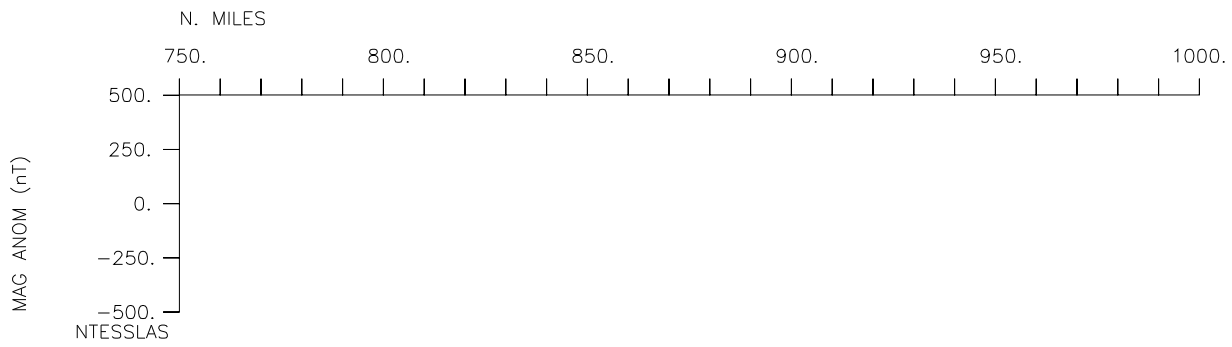
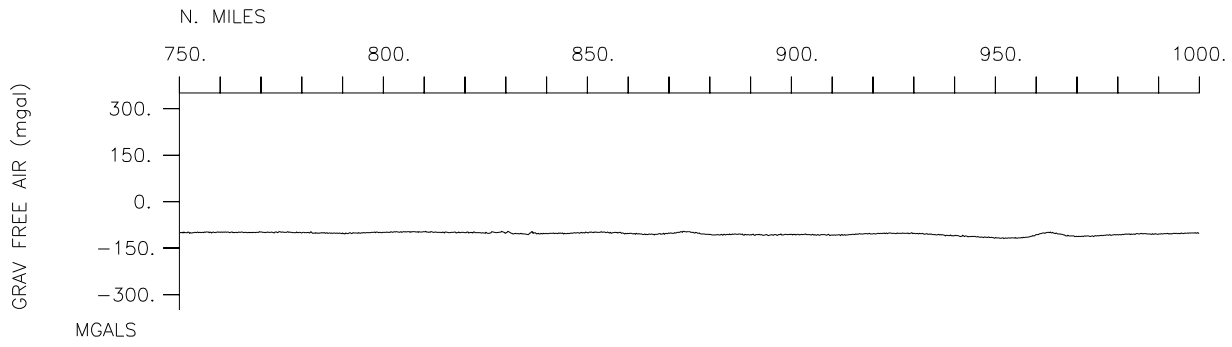
Multibeam-608 miles

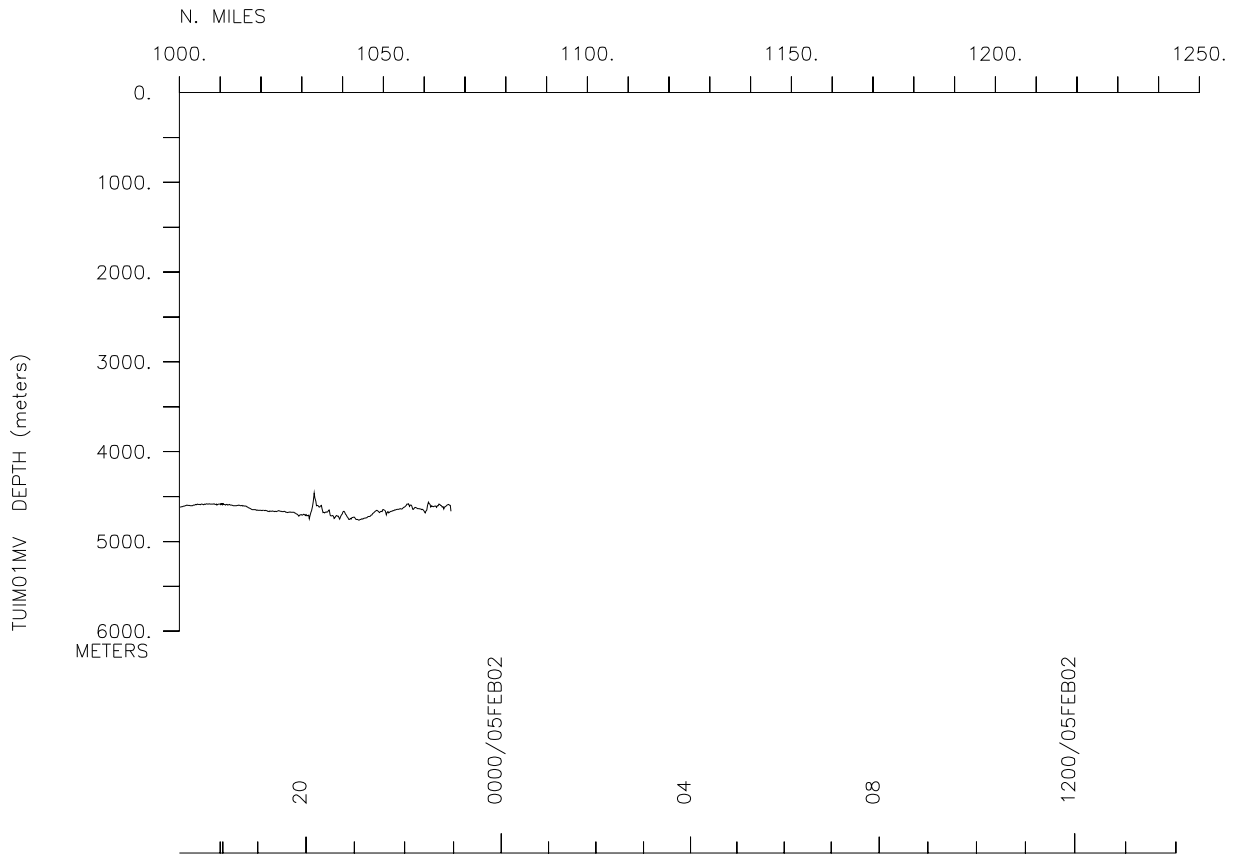
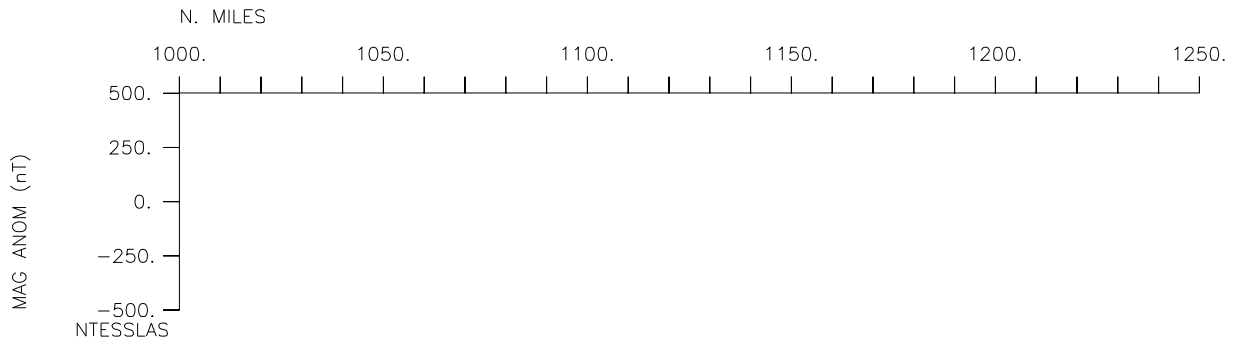
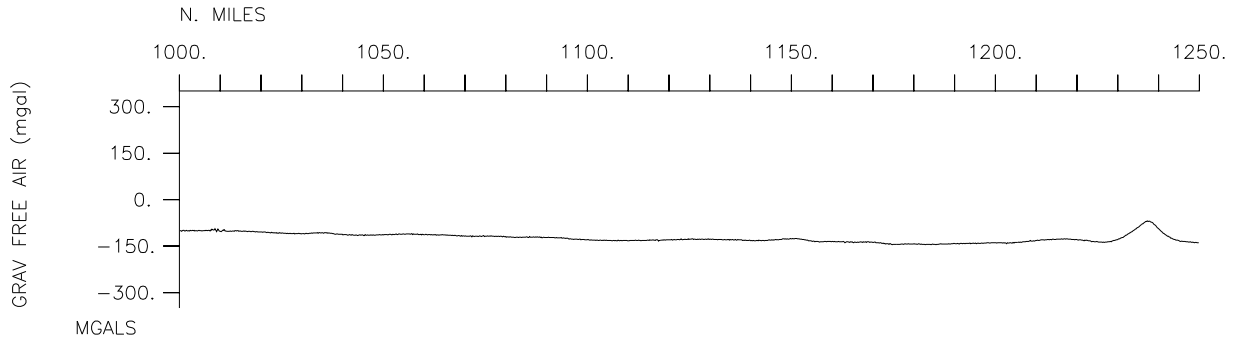
Gravity-2266 miles

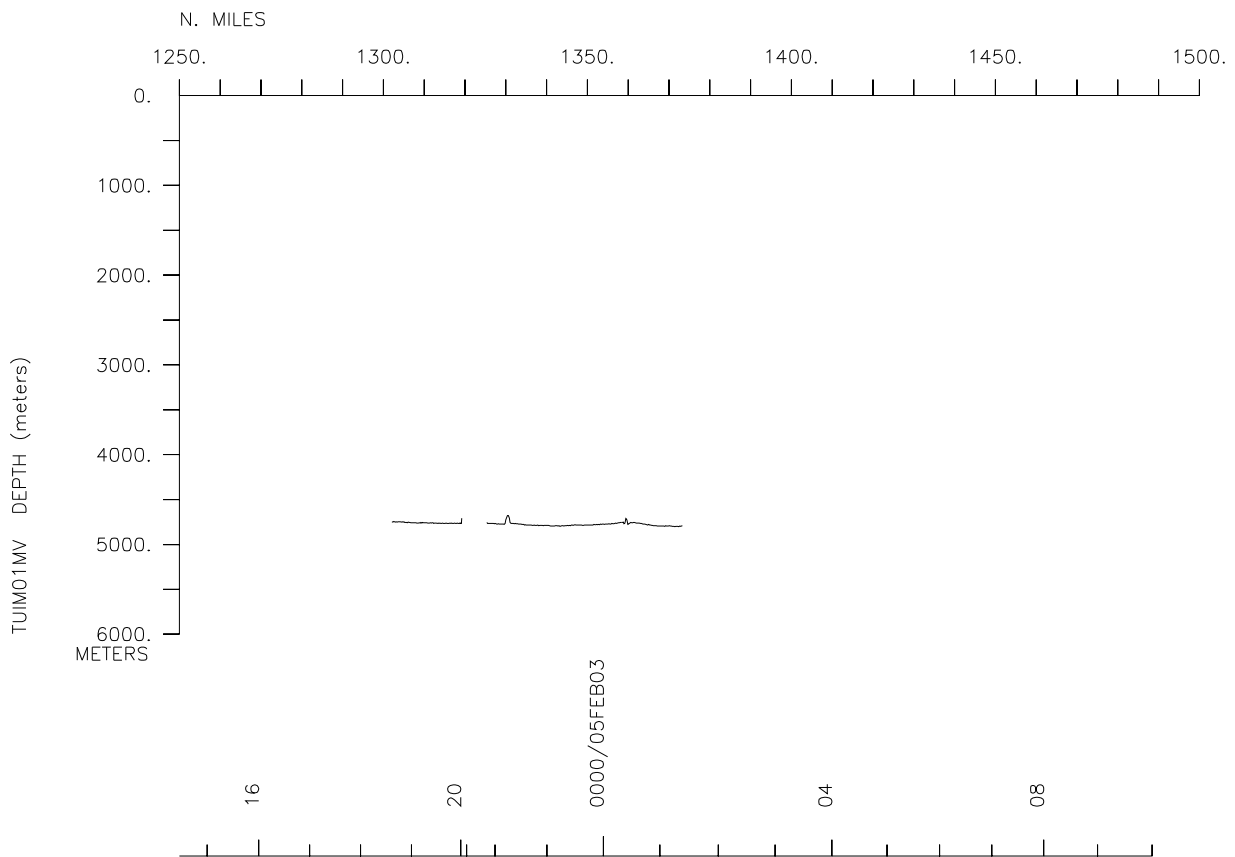
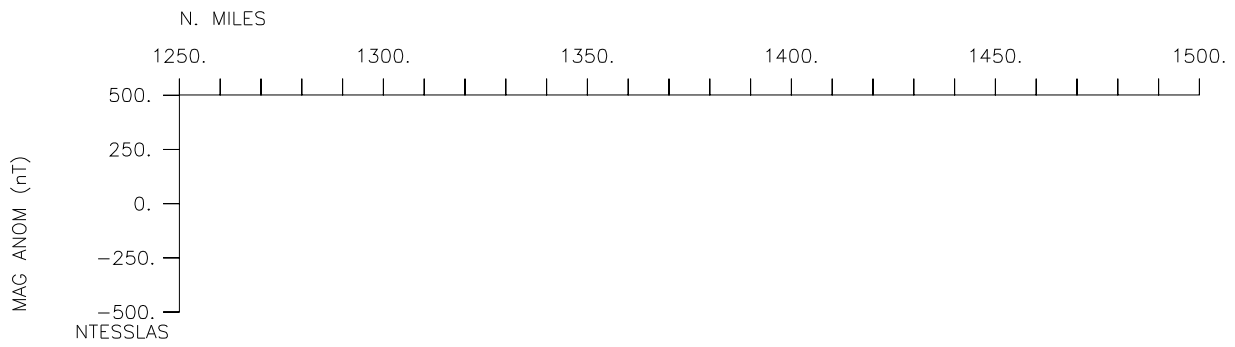
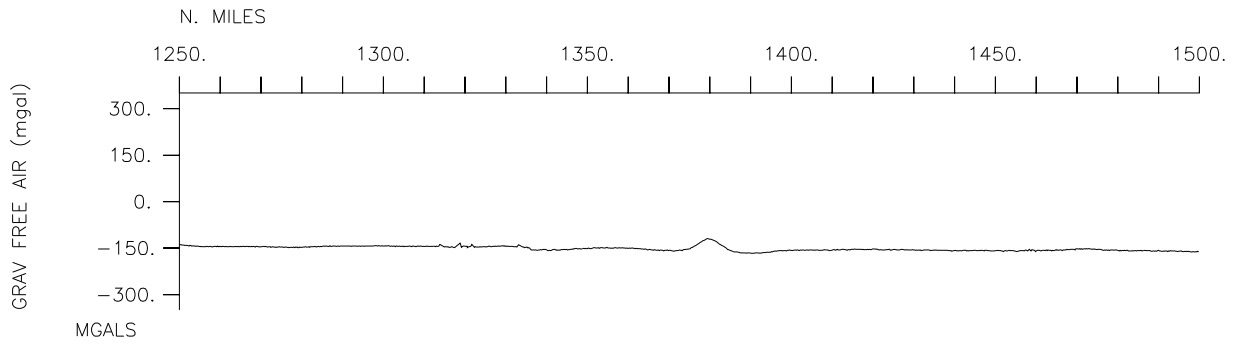


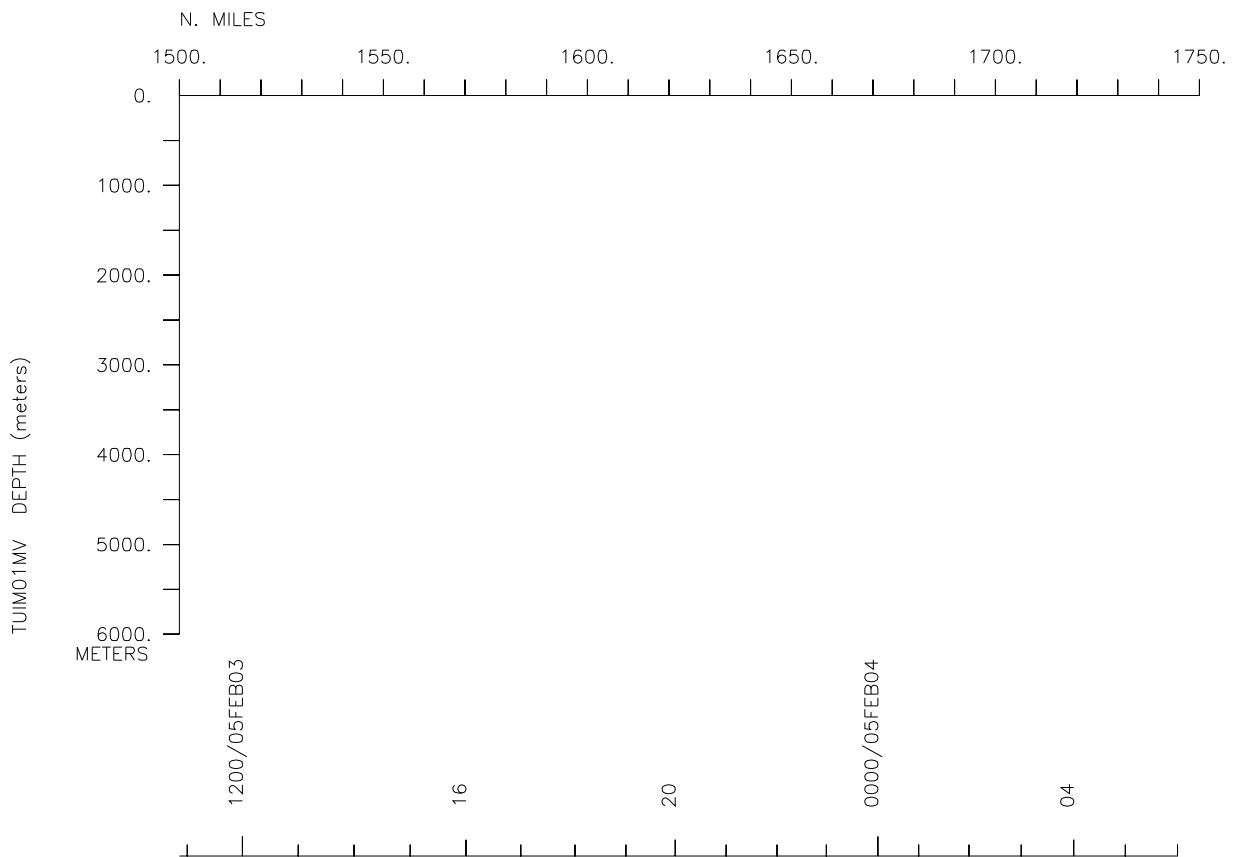
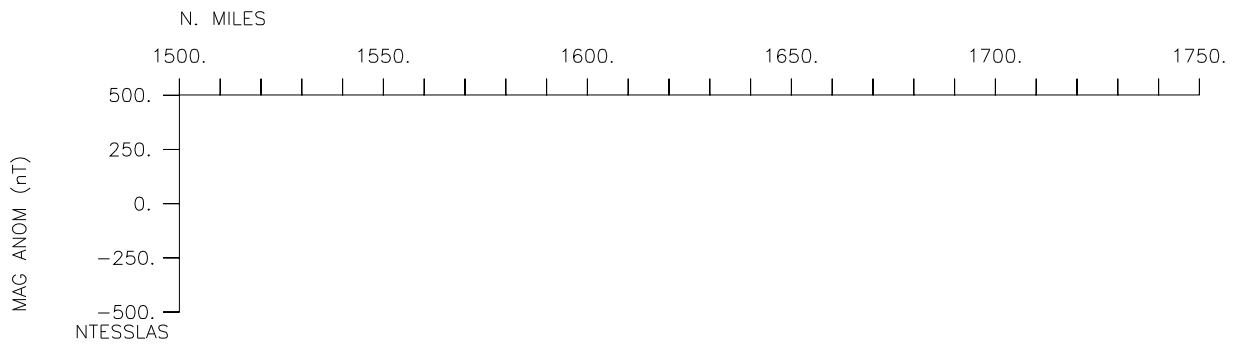
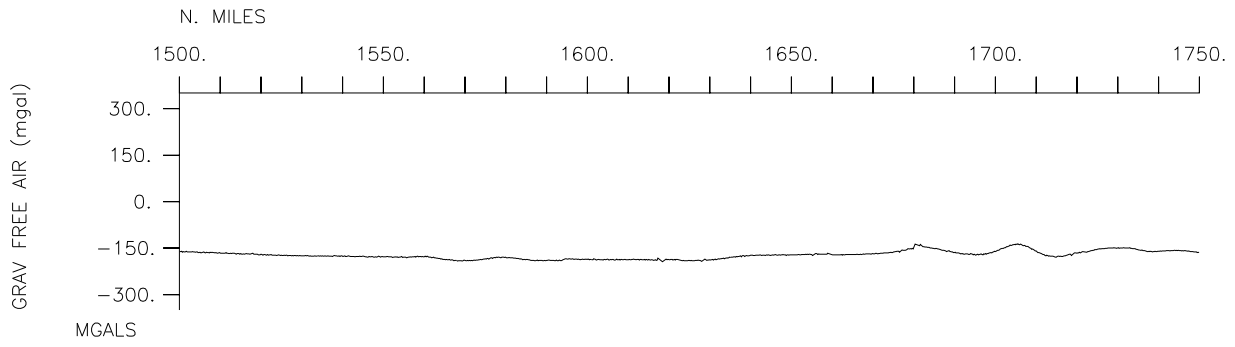


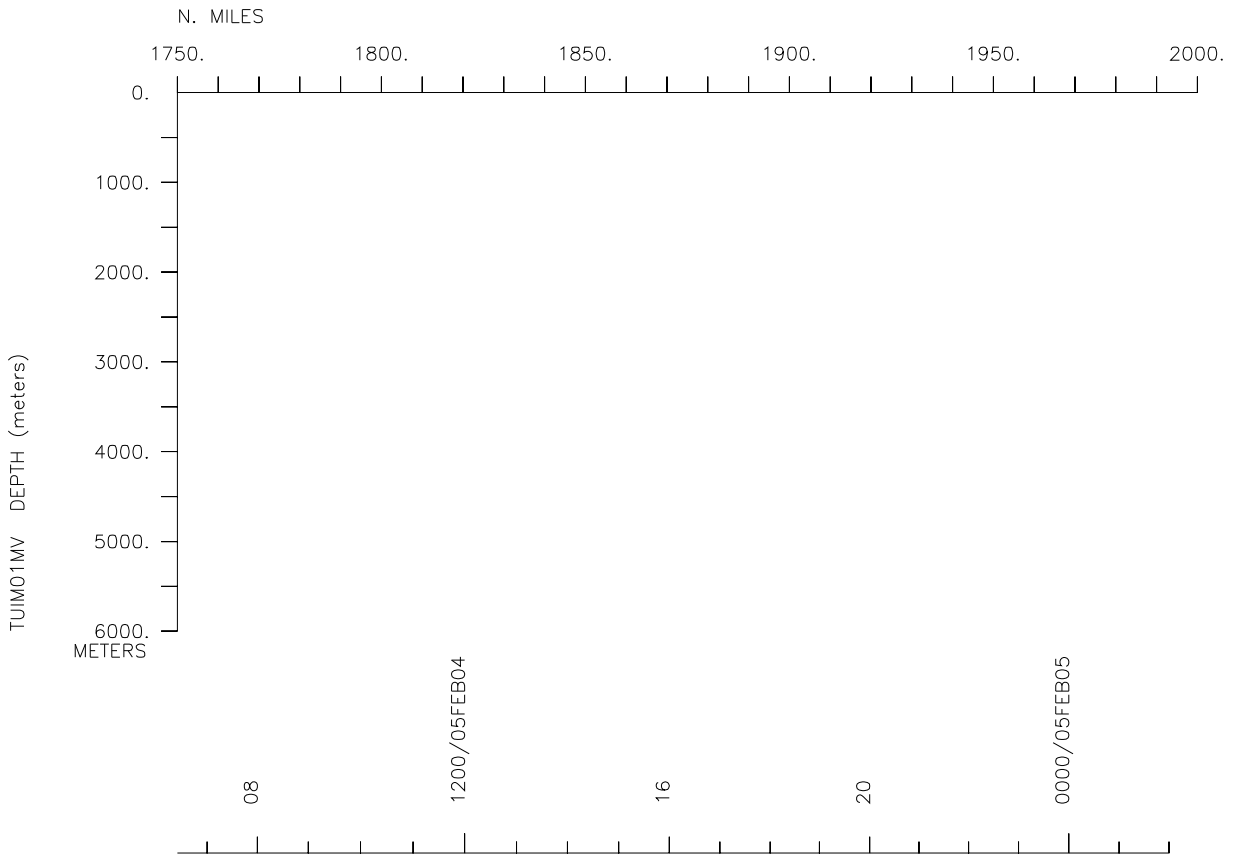
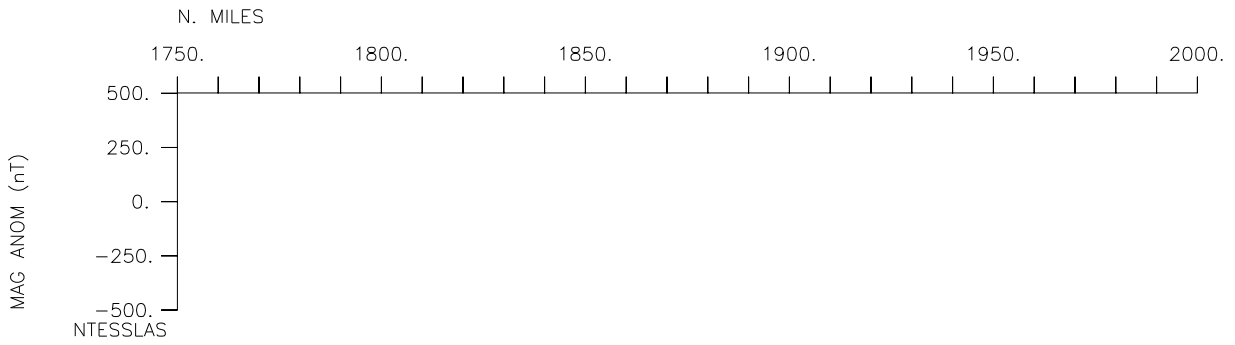
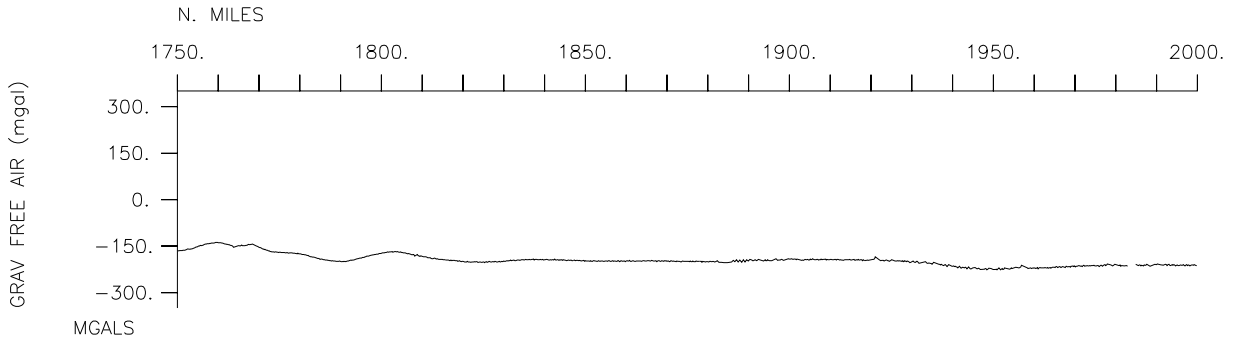


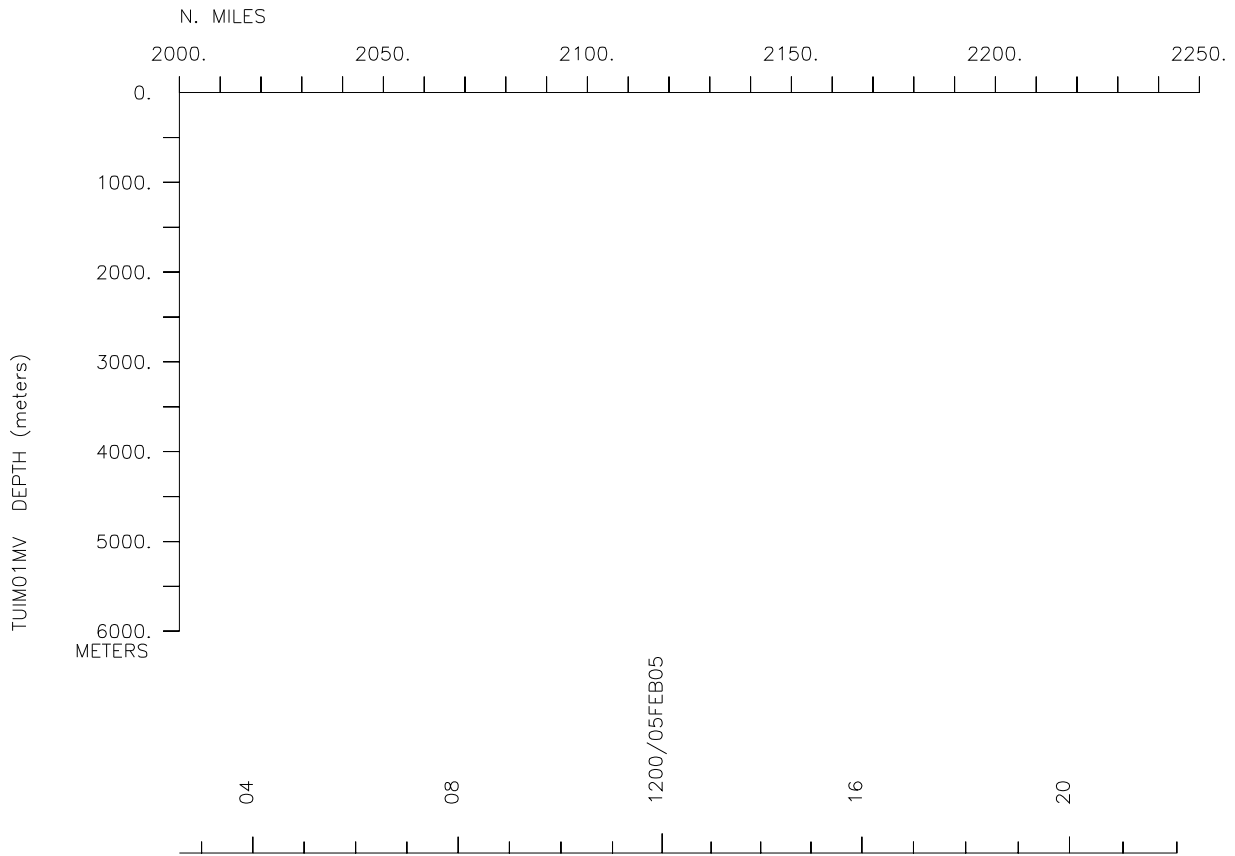
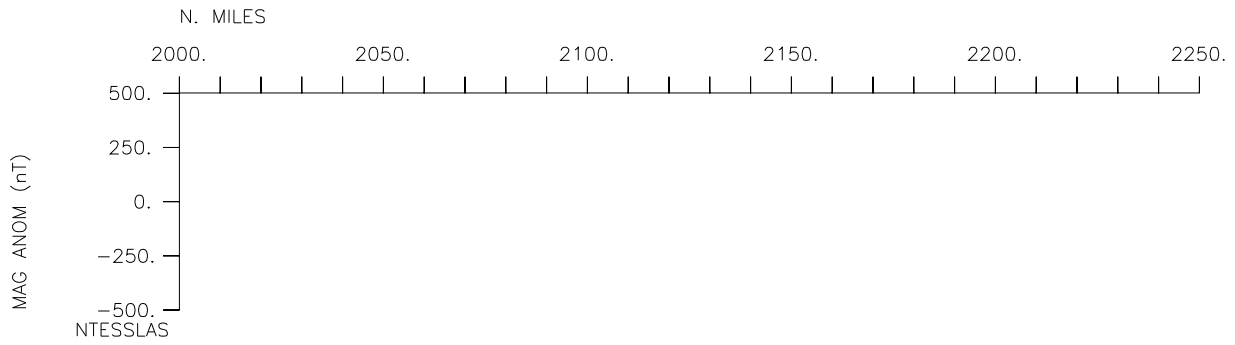
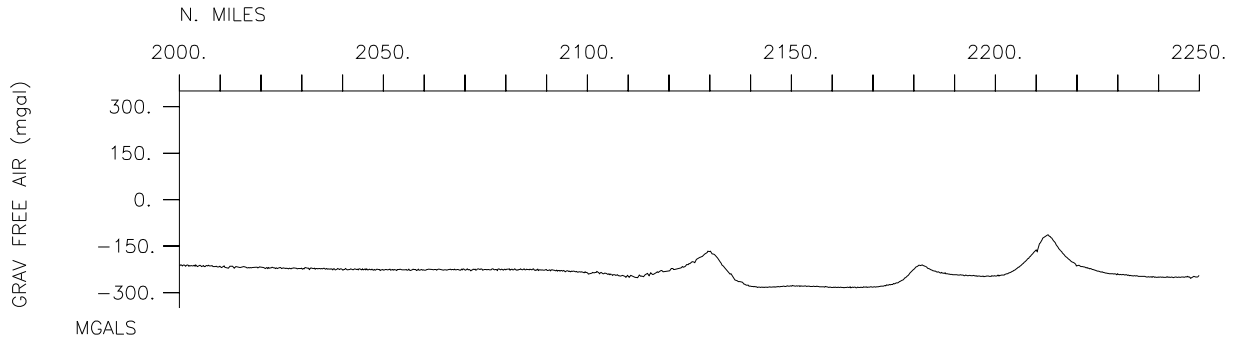


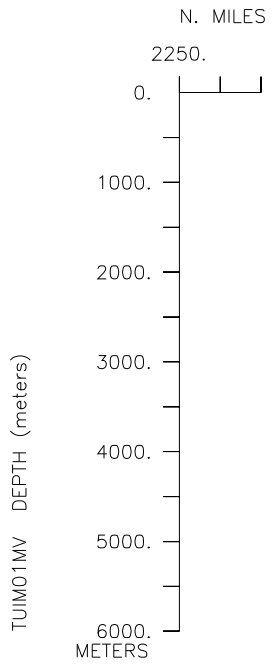
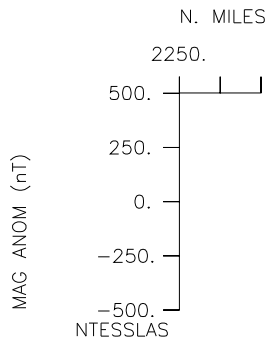
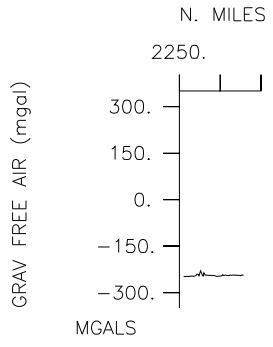












┌