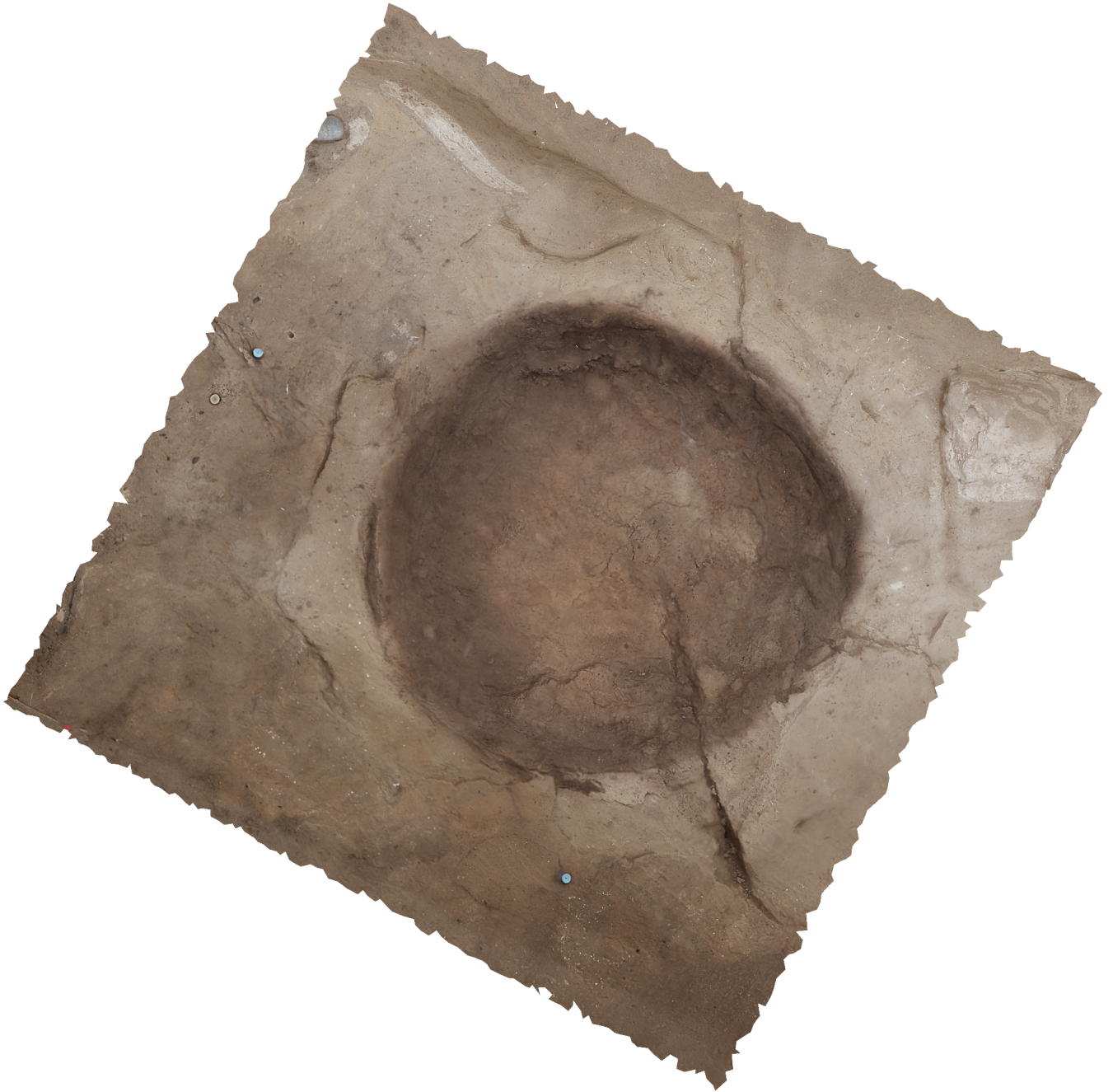


Agisoft PhotoScan

Processing Report
01 November 2014



Survey Data

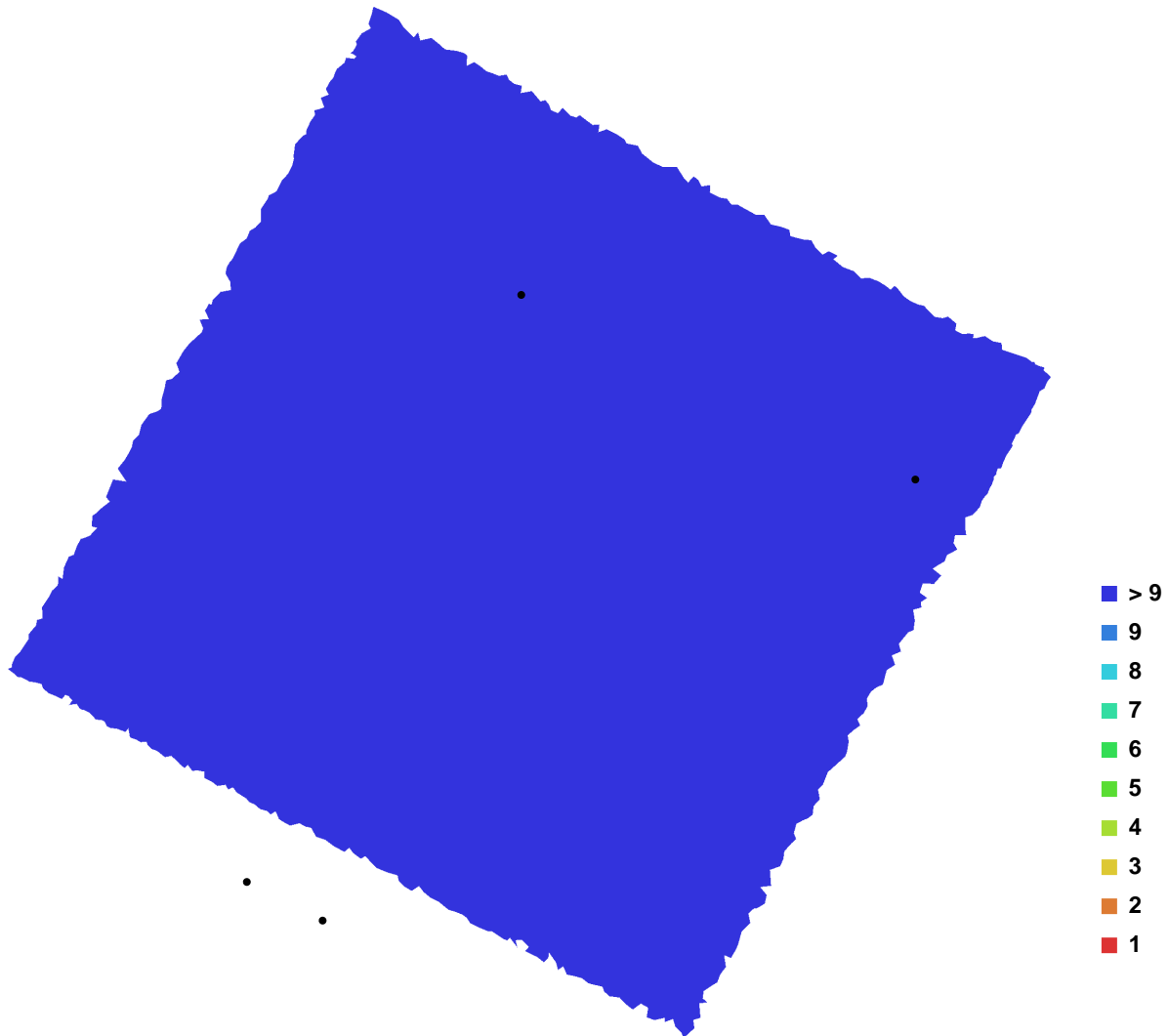


Fig. 1. Camera locations and image overlap.

Number of images:	21	Camera stations:	21
Flying altitude:	2.26804 m	Tie-points:	47826
Ground resolution:	0.000436041 m/pix	Projections:	121410
Coverage area:	1.1962e-006 sq km	Error:	0.670566 pix

Camera Model	Resolution	Focal Length	Pixel Size	Precalibrated
Canon EOS M (19 mm)	5184 x 3456	19 mm	4.384 x 4.384 um	No
Canon EOS M (20 mm)	5184 x 3456	20 mm	4.384 x 4.384 um	No

Table. 1. Cameras.

Digital Elevation Model

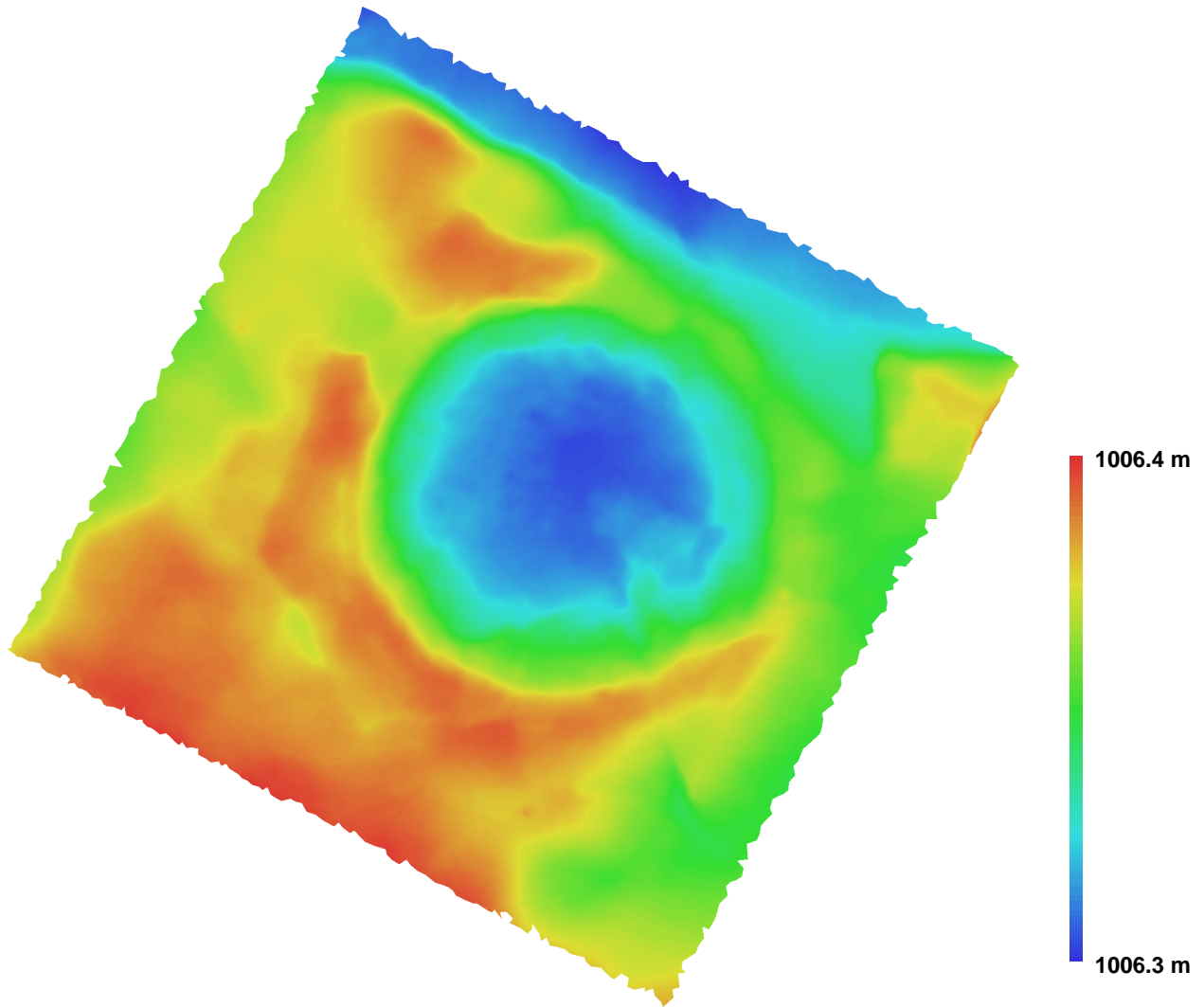


Fig. 2. Reconstructed digital elevation model.

Resolution: 0.00174417 m/pix
Point density: 328719 points per sq m