

# Agisoft PhotoScan

Processing Report  
01 November 2014



# Survey Data

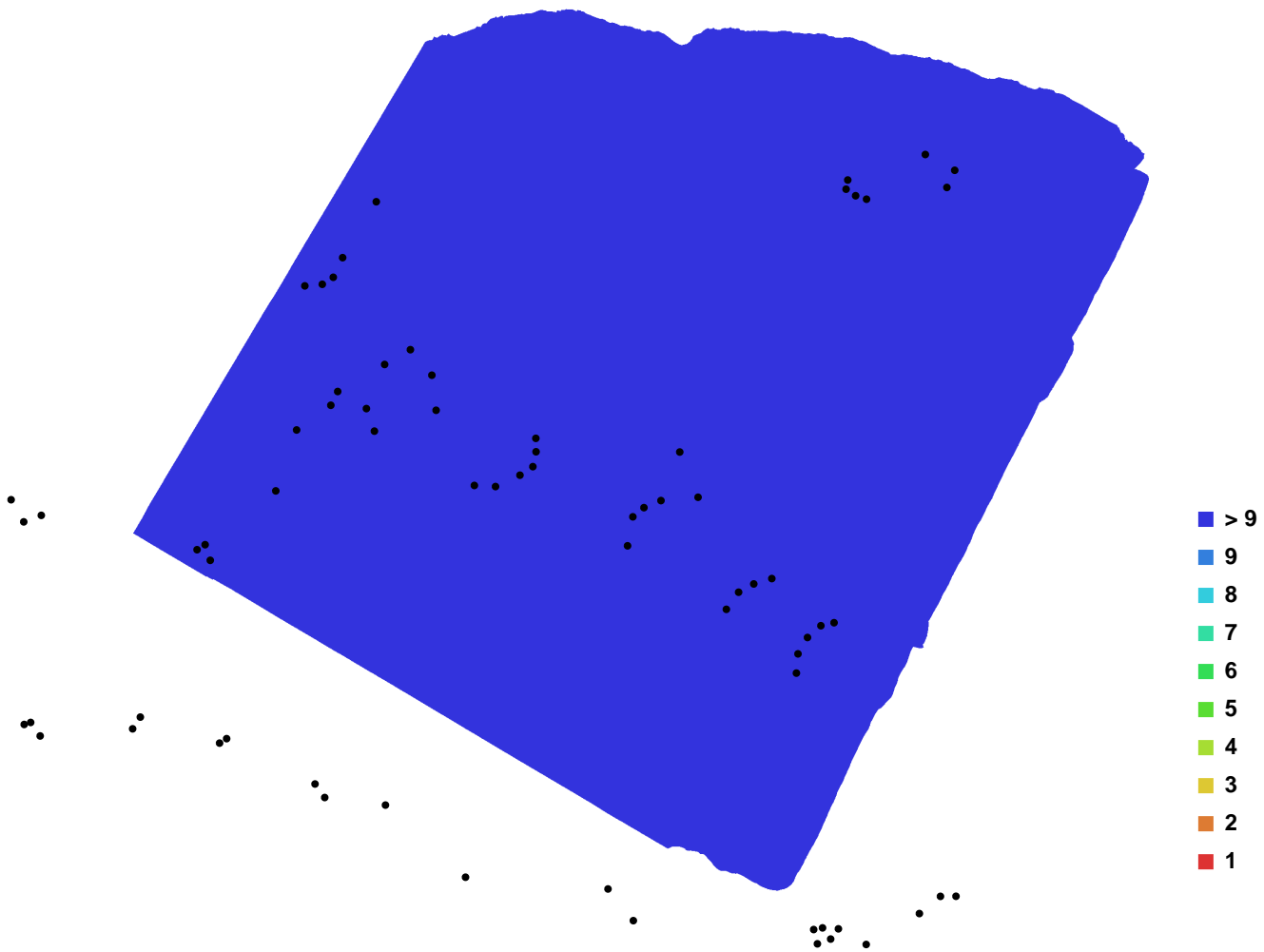


Fig. 1. Camera locations and image overlap.

Number of images:	76	Camera stations:	76
Flying altitude:	4.20748 m	Tie-points:	293308
Ground resolution:	0.000853054 m/pix	Projections:	824359
Coverage area:	3.32264e-005 sq km	Error:	0.462079 pix

Camera Model	Resolution	Focal Length	Pixel Size	Precalibrated
Canon EOS 50D (22 mm)	4752 x 3168	22 mm	4.78254 x 4.78254 um	No
Canon EOS 50D (21 mm)	4752 x 3168	21 mm	4.78254 x 4.78254 um	No

Table. 1. Cameras.

# Digital Elevation Model

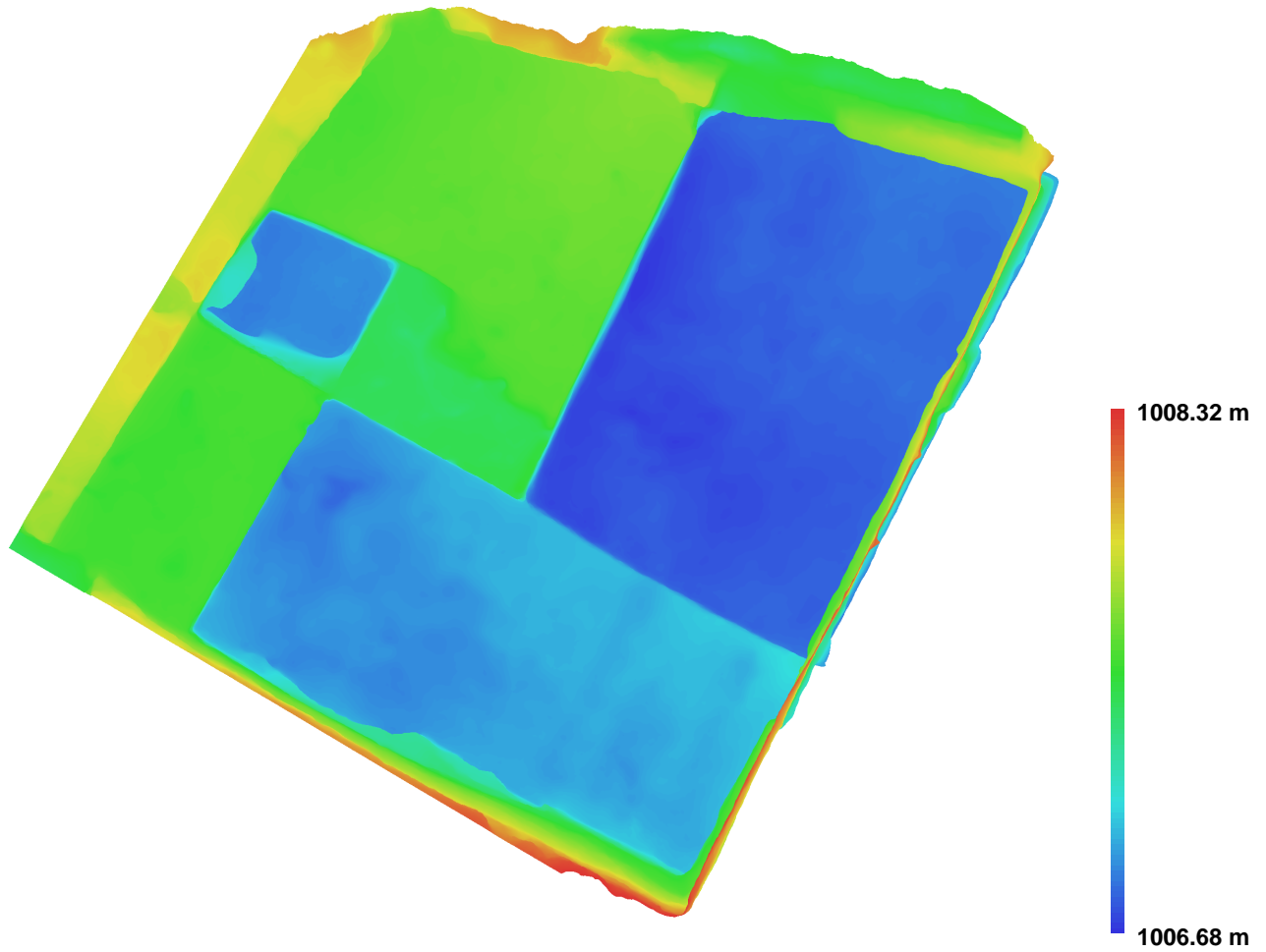


Fig. 2. Reconstructed digital elevation model.

Resolution: 0.00341221 m/pix  
Point density: 85887 points per sq m