

inSite

Casa Gallina_México

Presentación del proceso de **coparticipación**

de **Ana María Millán** en **inSite/Casa Gallina**



*Still de la animación en proceso

Correría (título de trabajo), 2015-2017

Animación 3d

Ana María Millán

Pieza comisionada y producida por inSite/Casa Gallina, México, 2015-2017.

Curaduría: Osvaldo Sánchez y Josefa Ortega

Coordinación de producción: Sergio Olivares

Storyboard: Edmundo Mata

Animación: Atotonilco Studio

Diseño y producción sonora: Demián Lara

Voces: René Alvarado, Paola Medina, Iraida Noriega,

Adriana Olivera y Sergio Rogalto

Asistencia de producción: Mariano Arribas

Coparticipantes:

Axel Alberto Guerrero Marín

Mayumi Aline Hidalgo Servín

Iván Tonatiuh Ramírez García

Axel Antón García

Brenda Yeliztli Ramírez García

Diana Cristina Rosas Trillo



Des-jerarquizar
Activar dominios publicos
Acuerdos de vida
Vitalizar redes
Empatia ambiental
Venerar el día

inSite
Casa Galina_13/18

Conectar intimidades
Creatividad social
Domar al ego
Agentes de cambio
Producir localidad
Políticas de pertenencia
Defensa del ocio

NOMBRE

NOMBRE CIENTÍFICO

Uso

PREPARACIÓN

Orlando
 - lugar bar trago
 - Oricaba la gendarmada
 - Puntos
 - Se los llevan. Caba
 - Pansa cosas banda
 - Maño

• Orlando	• Axel	• Brenda	Ivan
• ¿Qué te gusta?	• Repasar la química	• Repasar los matemáticos mal usado	Indiferencia
• ¿Qué te gusta?	• Los cuentos		Cultura
• ¿Qué cambio cambas?	• Letras robadas		Sistema transparente
	• Periback		











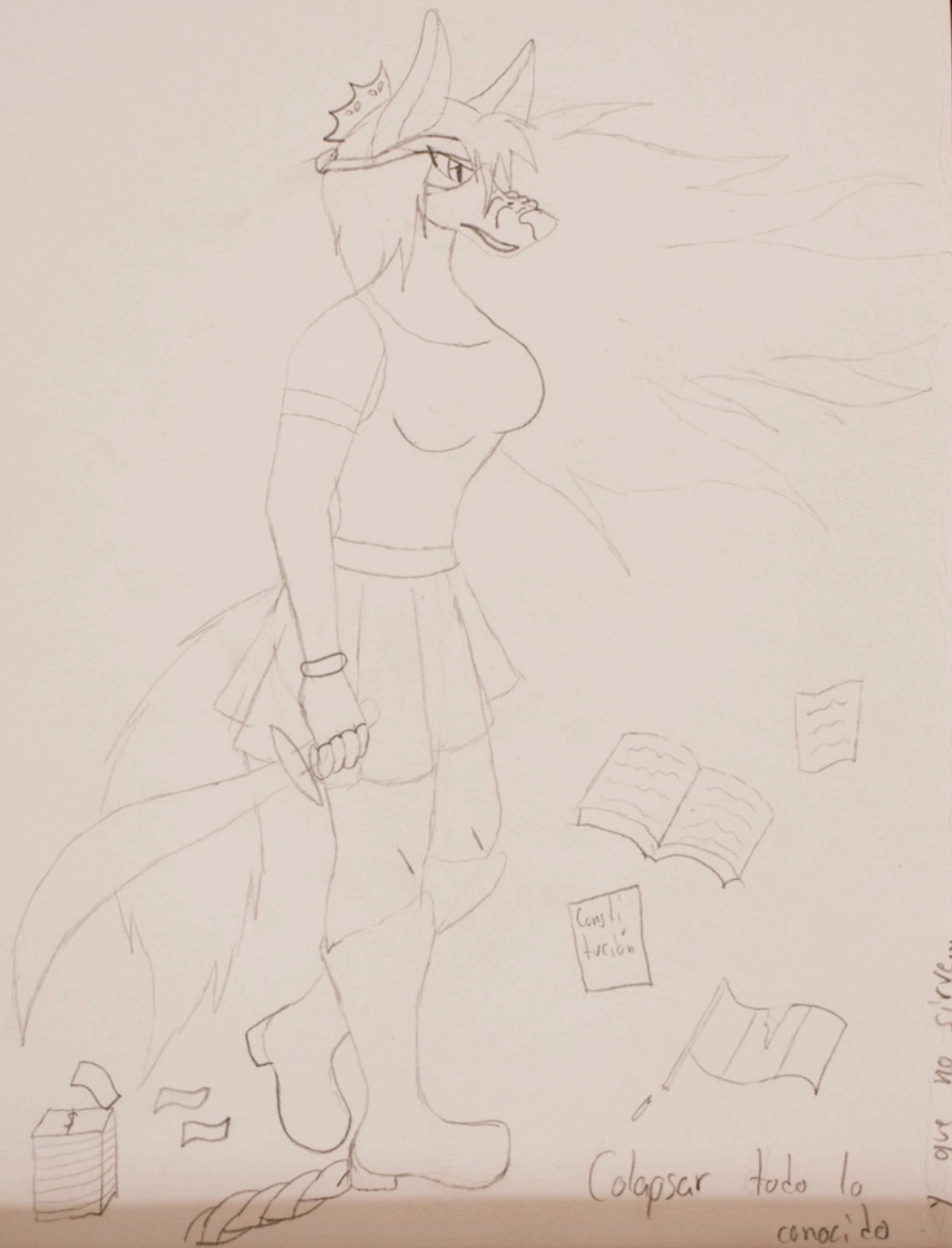


Salon Colonia
CARLOS COLORADO
DISEÑO Y PINTURA

MORE
COWBELL

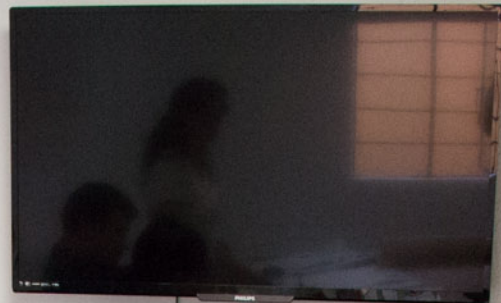






Colapsar todo lo conocido

Y que no sirva...



A woman with long dark hair, wearing a white t-shirt, stands on the left side of the frame. She is looking towards the center of the table, where she is pointing at a document. Her hands are positioned over a clear glass bowl containing orange sticks, possibly carrots.

A man with dark hair, wearing a blue t-shirt, is seated at the table. He is looking down at a document in front of him, holding a yellow pencil. He appears to be writing or reading intently.

A woman with dark hair tied back, wearing a grey t-shirt, is seated at the table. She is looking down at a document, holding a yellow pencil, and appears to be writing.

A woman with long dark hair, wearing a red tank top, is seated at the table. She is looking towards the woman in the white shirt, with her hands clasped together.

A man with short dark hair and glasses, wearing a dark blue t-shirt, is seated at the table. He is looking towards the woman in the white shirt, with a slight smile.

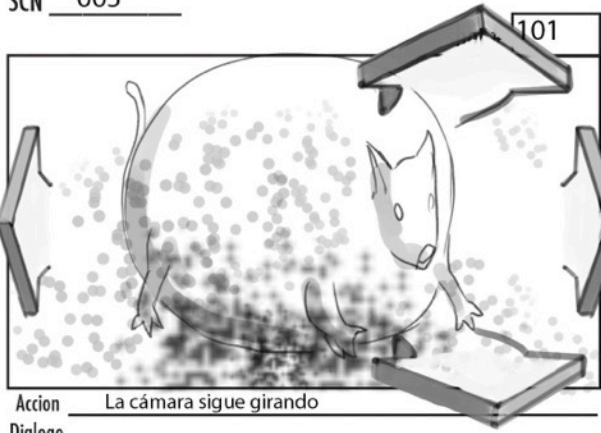
A large sheet of brown paper is placed on the table in the foreground. It has handwritten text in Spanish. The text includes:
- Tuam
- Ra - Area
- Figula Horos
- Tiempo Heligioso











Accion La cámara sigue girando

Dialogo



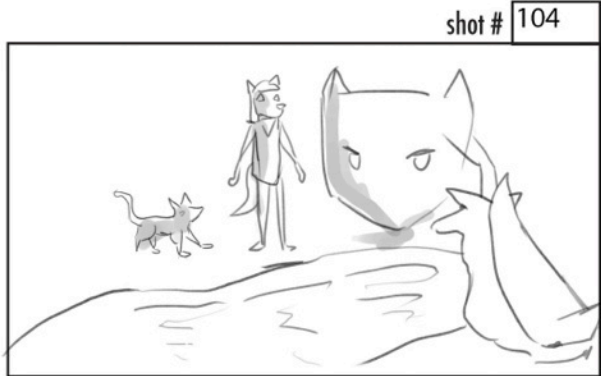
Accion hasta quedar de frente a los personajes

Dialogo



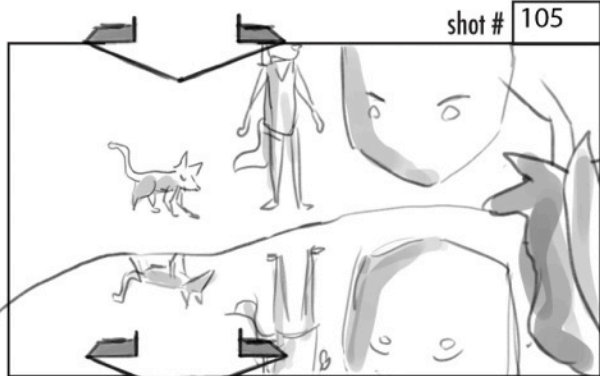
Accion Poni se desinfla, todos hablan y se rien

Dialogo



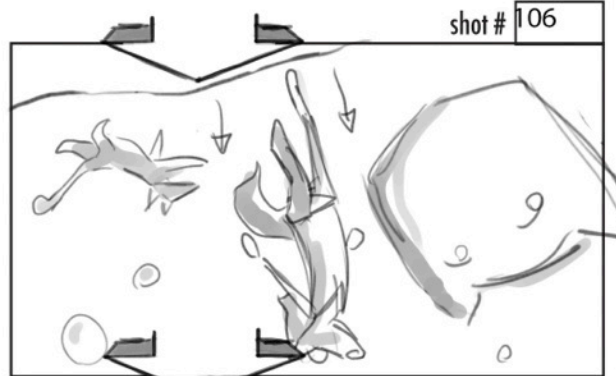
Accion Gusano les habla

Dialogo



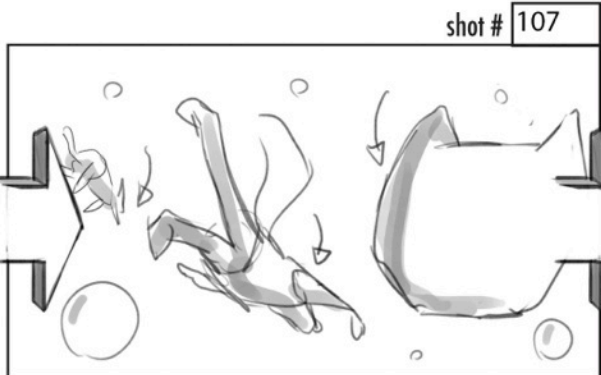
Accion La cámara panea hacia abajo para ver sus reflejos en el agua

Dialogo



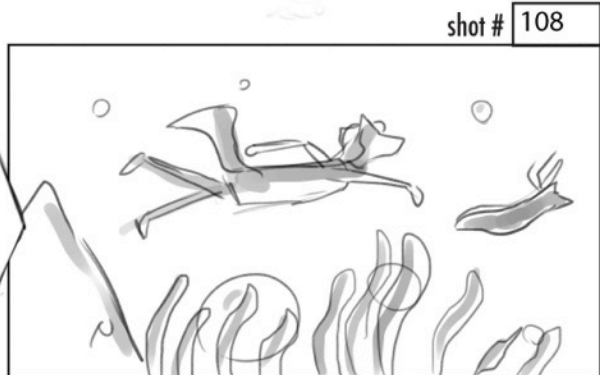
Accion se desprenden y flotan dentro del agua

Dialogo



Accion y comienzan a nadar

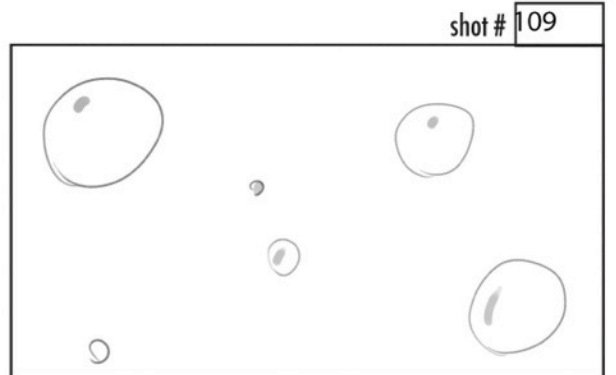
Dialogo



Accion La cámara los sigue a la derecha

Dialogo

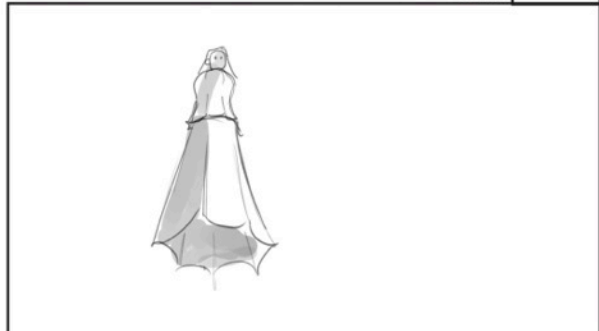
CORTE A



Accion Medium Shot / Todo cubierto de burbujas

Dialogo

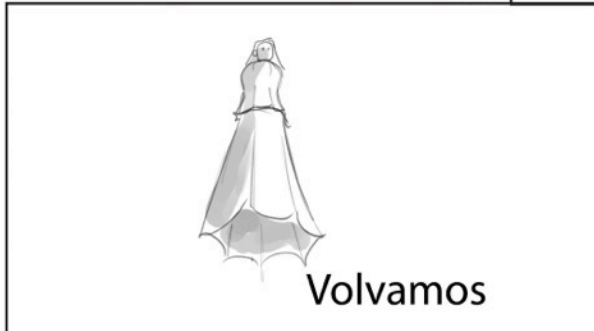
shot # 131



Accion Full Shot, Picada / El hada flota sobre los personajes

Dialogo

shot # 132

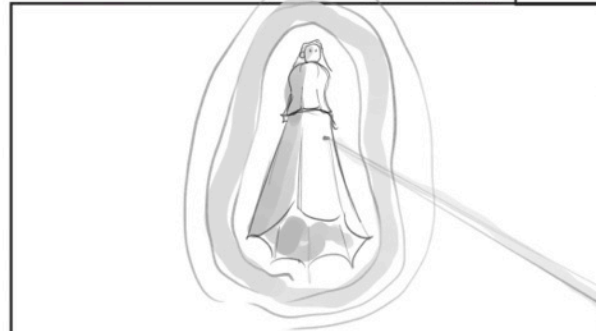


Volvamos

Accion Les habla y aparece texto

Dialogo

shot # 133

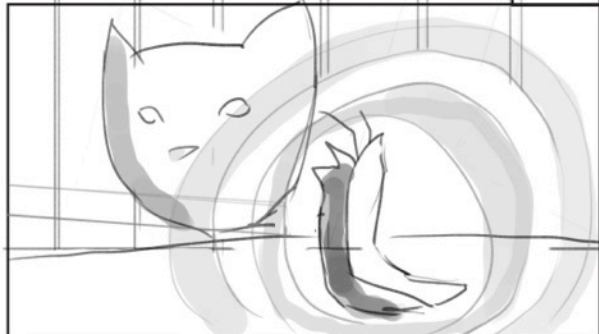


Accion El hada Brilla y lanza un rayo

CORTE A

Dialogo

shot # 134



Accion Full Shot / El rayo le dá a gusano

Dialogo

shot # 135



Accion y empieza a encogerse

Dialogo

shot # 136

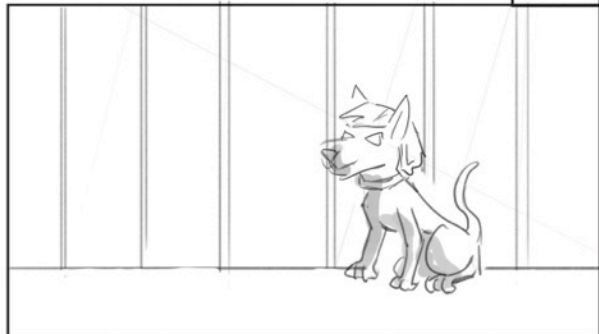


Accion Gusano empieza a caminar hacia la izquierda

CORTE A

Dialogo

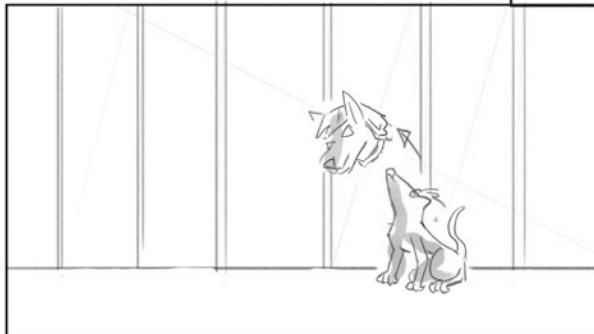
shot # 137



Accion Full shot / Poni suelta

Dialogo

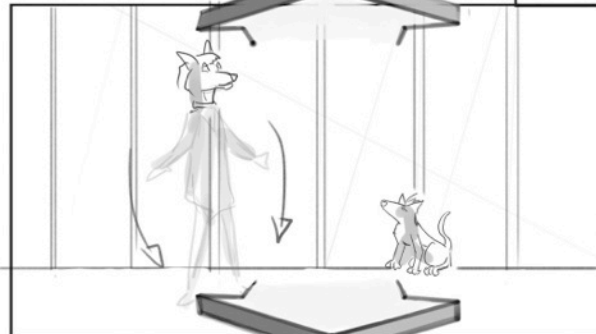
shot # 138



Accion la cabeza de Lyubov

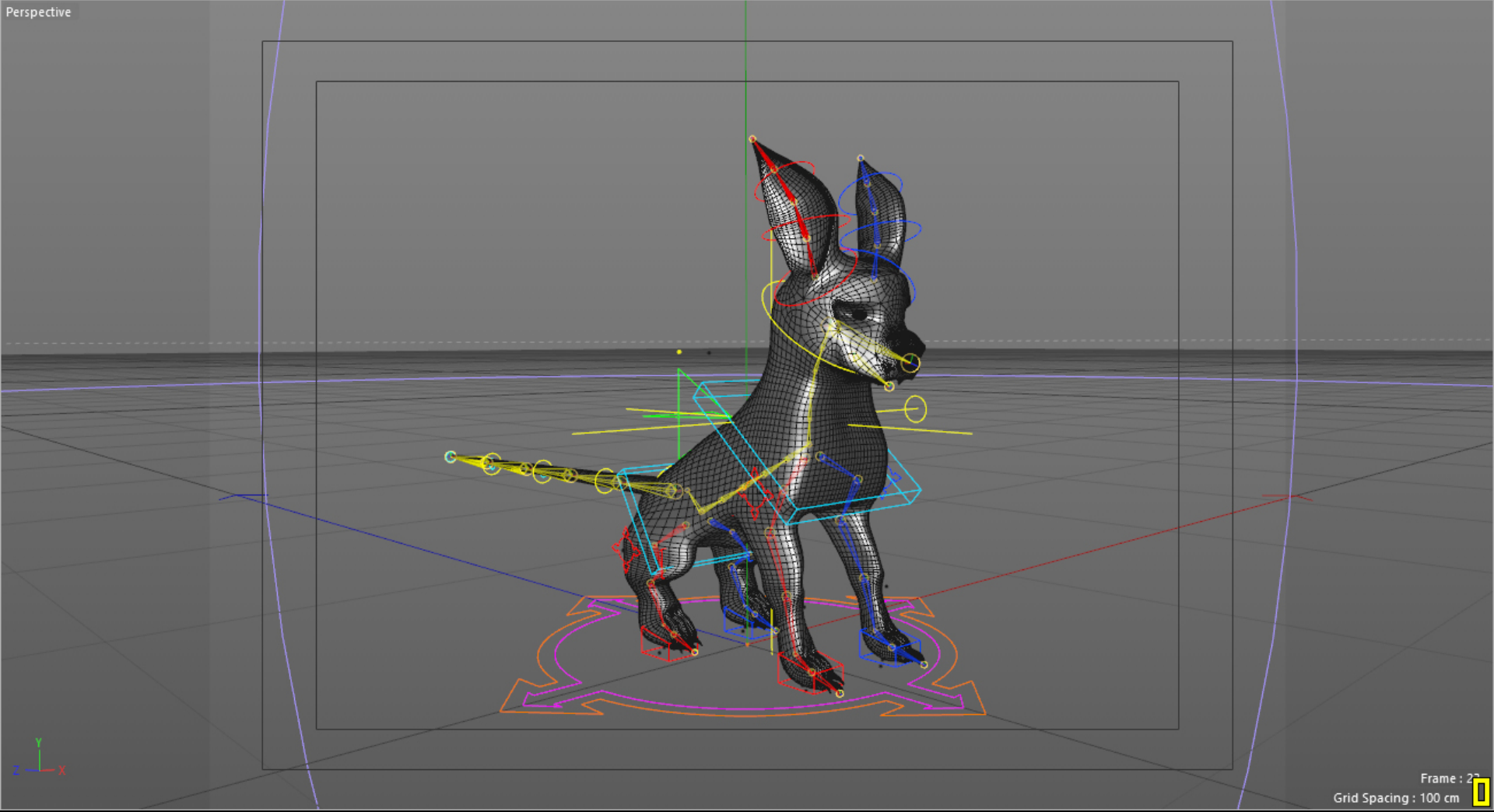
Dialogo

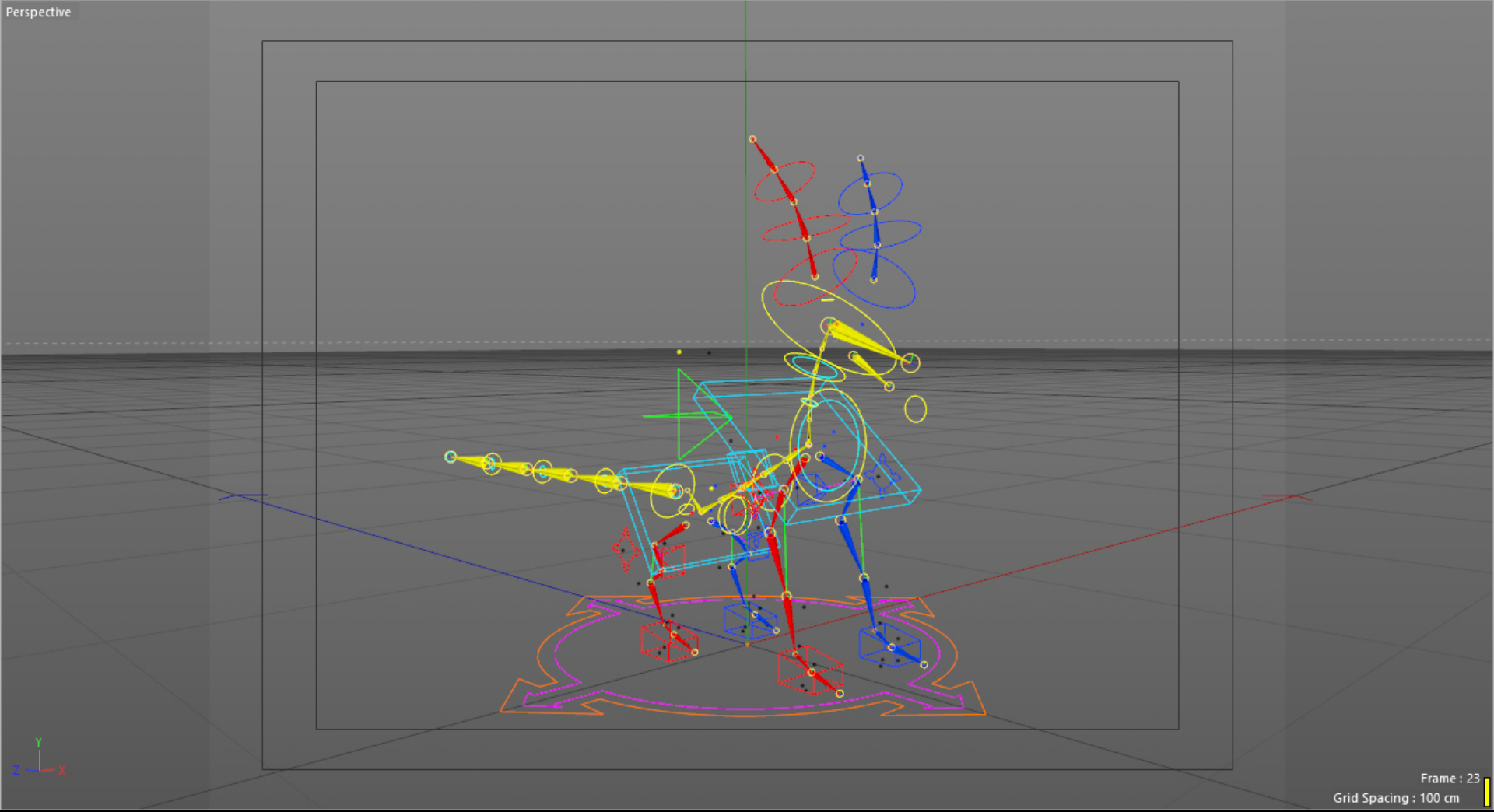
shot # 139

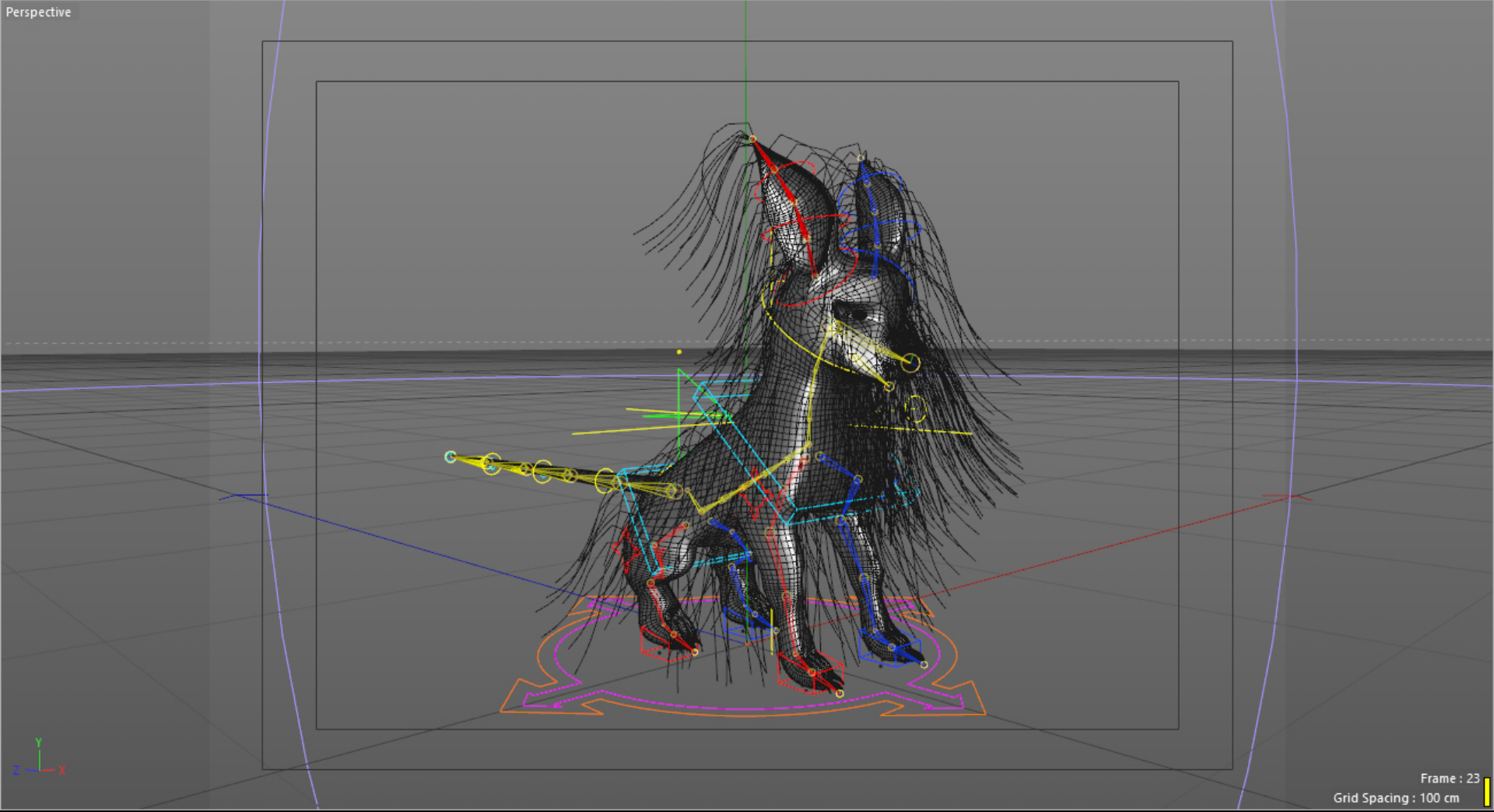


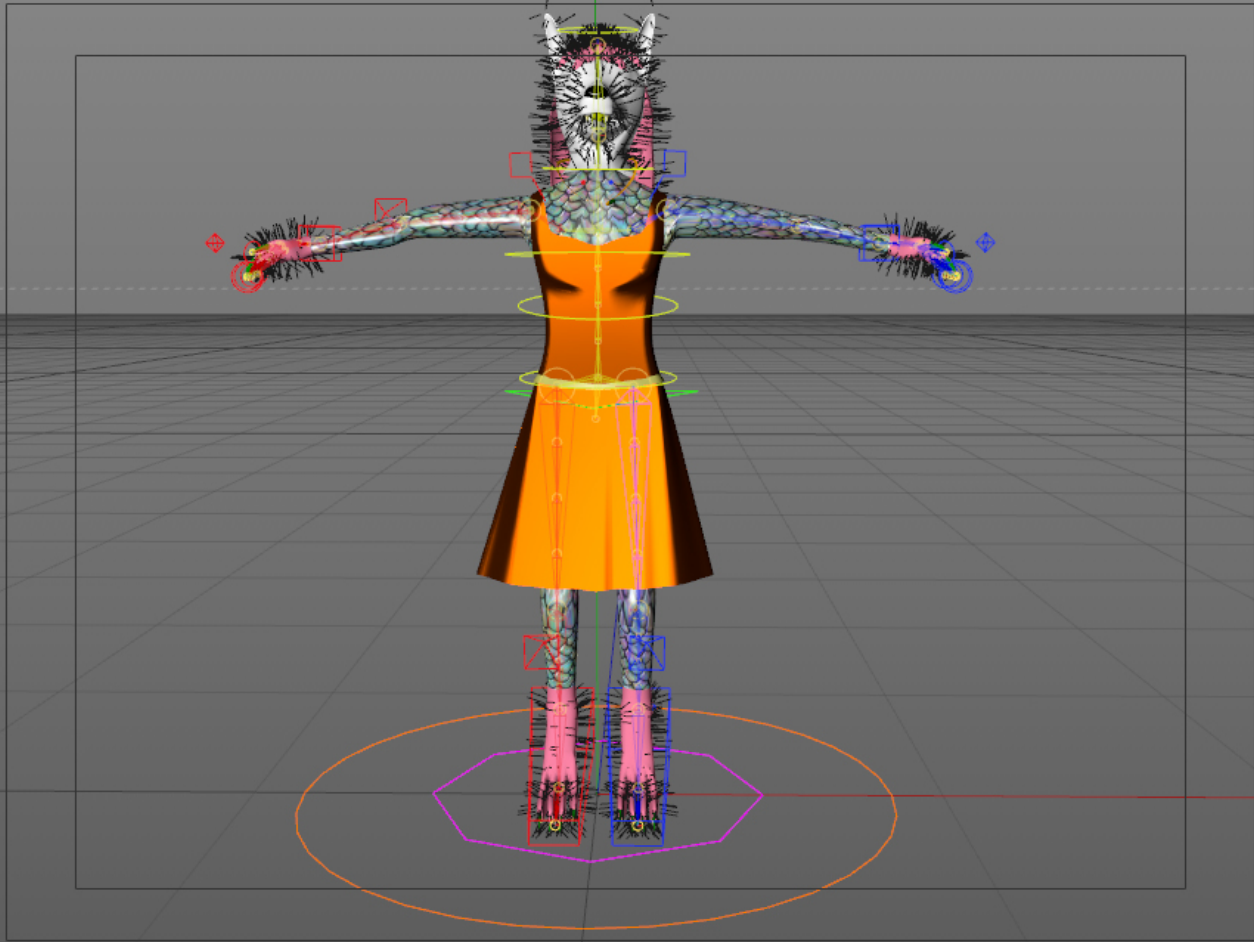
Accion y el cuerpo de Lyubov aparece. Dolly Back

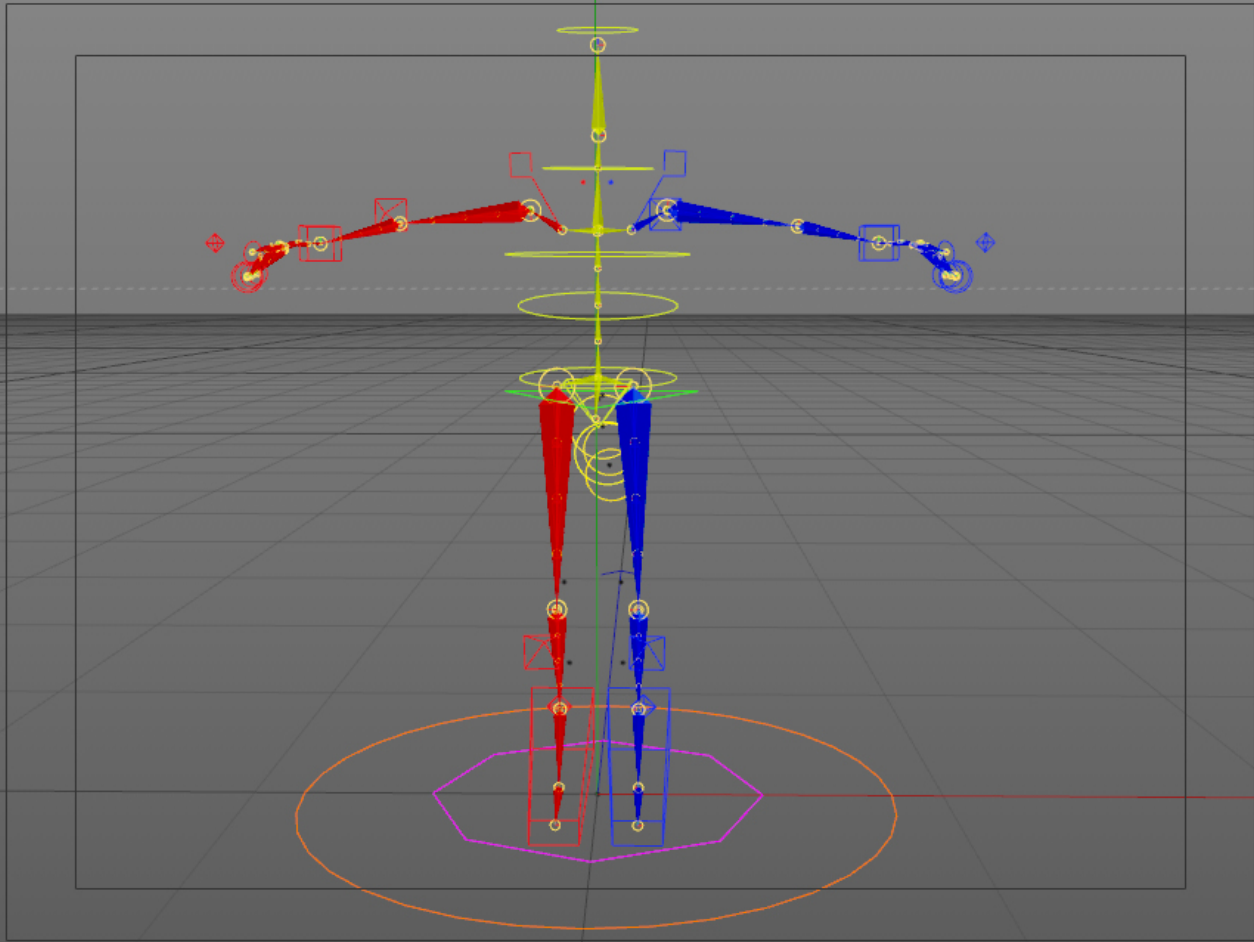
Dialogo

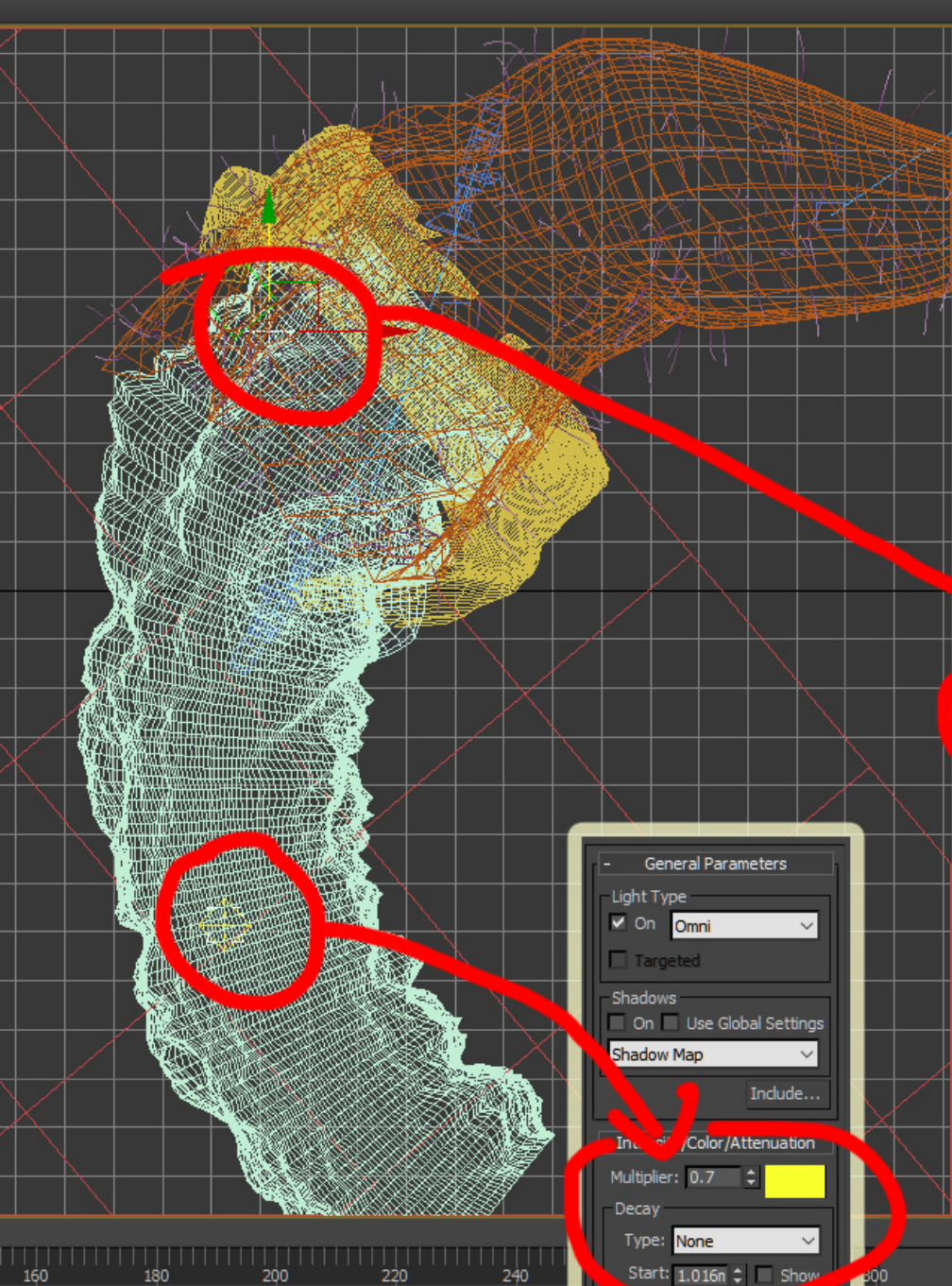












Omni002

Modifier List

- Omni Light

General Parameters

Light Type

- On **Omni**
- Targeted

Shadows

- On Use Global Settings
- Shadow Map

Intensity/Color/Attenuation

Multiplier: 0.3

Near Attenuation

- Use Start: 0.0m
- Show End: 1.016m

Far Attenuation

- Use Start: 2.032m
- Show End: 5.08m

Advanced Effects

- Shadow Parameters
- Shadow Map Params
- Atmospheres & Effects
- Hair Light Attr
- mental ray Indirect Illumination
- mental ray Light Shader

Auto Key Selected

Set Key Key Filters...

General Parameters

Light Type

- On **Omni**
- Targeted

Shadows

- On Use Global Settings
- Shadow Map

Intensity/Color/Attenuation

Multiplier: 0.7

Decay

- Type: **None**
- Start: 1.016m

Near Attenuation

- Use Start: 0.0m



