

**The Sunset
Mining
Company**
of California.

Has paid Monthly Dividends
of Two Per Cent for Ninety-
Eight Consecutive Months..



We will Furnish a Round
Trip Ticket to the Mines
Free of Charge. Read Par-
ticulars...



EMERSON & COMPANY,
BANKERS AND BROKERS.

New York,
35 Nassau Street.

Chicago,
N. Y. Life Bldg.

VIRGIN GOLD FROM NATURE'S BANK.

Butte County has long been famous for its gold mines. Some of the earliest and richest diggings in the State were in this County. The early pannings yielded wonderful returns and a hundred dollars a day was often taken out by lucky miners. Mountain streams were rich in gold and were worked first by pan and rocker and afterwards by improved machinery. The wealth of some of these early mines is beyond belief. The "Cape Run" on Feather River, near Oroville, yielded 142 lbs. in gold in a single day. The Willard Claim, near Magalia, produced the largest nugget ever discovered in America; it weighed 59 lbs. in the rough, and netted \$10,690.00. The Cherokee Mine, which is still working, is credited with having yielded \$13,000,000.

LOCATION OF SUNSET PROPERTY,

The famous "Amo Group" of the Sunset Mines is located in Butte County. They are reached by rail from San Francisco to Oroville, 150 miles, then over a good road by conveyance to the Mines. They are directly in the Citrus Belt of Calif. and can be worked all the year. This gravel mine which is operated hydraulically consists of 100 acres all of which is gold bearing. The Company has sunk numerous shafts, and can tell almost exactly the amount of gold gravel beneath the surface. The present hydraulic operations upon the Amo Mines, enables the

Company to wash about 1,000 yards per day; at this rate it would take 85 years to exhaust the gravel. As this is but a small portion of the mineral wealth owned by the Company one can readily see the certainty of the present large dividends being continued. The Company desires to install additional hydraulic plants about three times the size of the present one, with all appliances. With such an equipment at least 3,000 cubic-yards could be washed every day, with the same force of men required to run the present mine. This would exceed \$500 to \$600 per day with working expenses of not more than \$75.00.

SUNSET'S "OLD GLORY MINE."

In addition to the "Amo Group," the Sunset Mining Company own other valuable mines; chief among these is "Old Glory" a blue drift gravel property which is showing wonderful results. It turns out large nuggets each week, which are the marvel of this section. An eminent mining engineer, of Oroville, Cal., of twenty year's experience (name given on application) has just made a tour of the mines of California and Nevada, and says that "Old Glory" is the **richest gold mine in California**. We invite you to visit this mine and see for yourself.

GOLD DREDGING IN BUTTE COUNTY.

Near Oroville, is the scene of the most successful gold dredging in the world. Early

miners knew that great values laid in this territory, and they sought it with every means within their power. Underground water flow baffled the skill of the primitive miner, and stopped their work before they reached pay gravel; the surface, however, was mined most successfully, but Mother Earth clung to the richest of her treasures, and the reaching of bed rock was a mechanical proposition which was left to be solved with the modern dredge. For over 30 years dredging machines of various kinds were tried on Feather River. All kinds of appliances such as suction boats, powerful pumps, tubes and pneumatic pressure were also tried. It was not, however, until the Ridsen Dredge, designed by R. H. Postlethwaite, of New Zealand, was introduced that the mechanical problem was solved. The first successful dredge was built in 1898, and a few short years have developed one of the most important branches of the great Gold Mining Industry. It is to equip these modern gold dredges costing \$90,000 apiece that the Sunset Mining Company is now selling Treasury Stock. As soon as these can be put in operation, the dividends will be equal to those of its neighboring companies, namely 40 or 50% per year, and the Stock will be selling at several dollars per share.

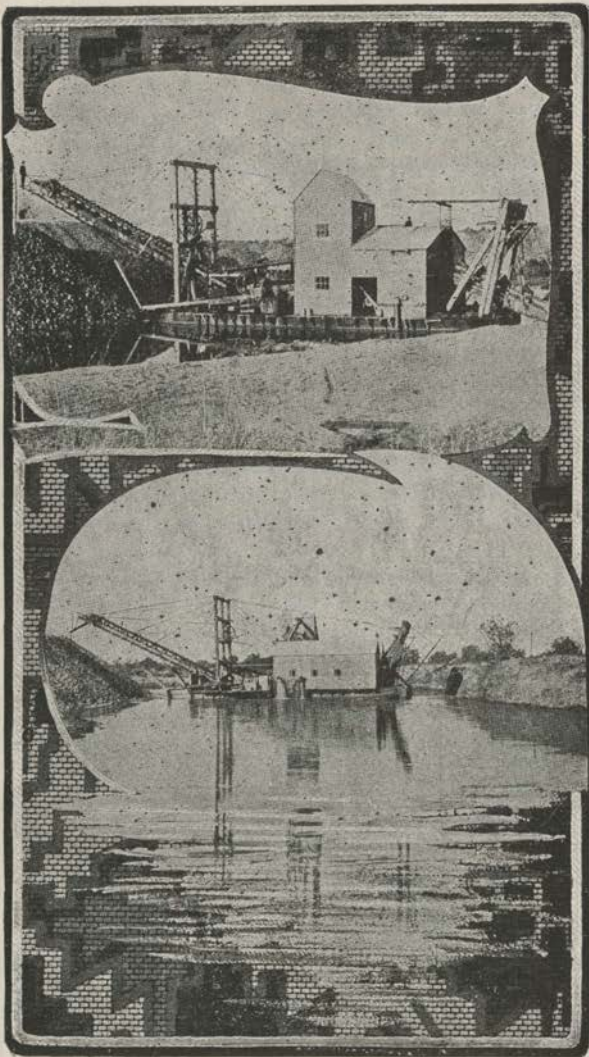
COST OF CONSTRUCTION.

Dredging for gold is not a poor man's occupation; it requires capital and plenty of it. A good modern dredge costs from \$90,000 to \$100,000; add to this the working capital to cover

pay-roll and expenses, and one can see the large investment necessary before a dollar of returns can be expected. The large profits make even this expenditure desirable. The gravel can be mined at 5c. per cubic yard. Assays show the value of the Oreville district to be about 30c. per cubic yard. The Sunset Company is the only one in this district which is offering Treasury Stock for sale, all others being close corporations and holding their stock from the general public. According to the "Marysville (Calif) Appeal." There is invested in this class of mining close upon a million dollars, and the profits range from \$500,000 to \$750,000 per annum.

WHAT SUNSET STOCK PROMISES.

We believe as soon as the Sunset Company can equip modern gold dredges they will equal large dividends paid by the other dredging companies, and anybody who buys Sunset Stock now will be realizing most handsomely upon his investment. Under present operations the company can pay 2% monthly upon par, and have handsome surplus. We offer you an investment which has stood the test of time, and which is recommended by its fortunate Stockholders. The Company has given its guarantee to refund the purchase money to any party who finds anything has been misrepresented in its printed matter. We invite you to go to the Mines at our expense and believe that if you go you will be glad to purchase as much stock as you can afford to take.



GOLD DREDGING ON FEATHER RIVER.

OUR SPECIAL OFFER.

To purchasers of 500 shares or more we will furnish a round trip ticket to San Francisco and return, for the purpose of investigation. A number of ladies and gentlemen have already declared their intention of going and we expect to have at least one Pullman coach filled with Sunset tourists. The railroads have promised to give us particular attention. We will travel by the picturesque Santa Fe Line to San Francisco, which takes the Southern route and journeys for several hundred miles along the the beautiful Pacific coast. The famous Grand Canon, of Ariz., the most imposing sight in the world, Los Angeles and the glories of Southern Calif. will be features of the journey. A member of our firm will accompany the party and see that each tourist is taken care of. We will gladly furnish further information upon application, and trust that you will decide promptly to go with us. We expect to leave New York on April 26th, arriving in San Francisco the 1st of May. The round trip including sleeper and meals need not exceed \$50.00. Do not let this chance go by to see this glorious part of America and above all do not fail to go with us to the Mines and examine for yourself the rich properties of the Sunset Mining Company. Sincerely,

EMERSON & COMPANY,
BANKERS AND BROKERS,
No. 35 Nassau St., N. Y. City.

**“One Result is Worth a
Thousand Promises.”**



**The Sunset Mining Company is the
most reliable dividend payer on the
Market...**



The Stock is now selling at \$1.50 per share. We advise you to purchase now before the advance.

PERSONAL GUARANTEE.

We call the attention of our customers to the following guarantee made by the SUNSET MINING COMPANY...

San Francisco, February 1st, 1902.

To whom it may concern:

If you buy stock now and at a later date come here to visit our working properties, and find we have misrepresented anything in our circular, we will not only pay your expenses (up to \$300), but will return the price of your stock, leaving a clear profit of whatever dividends you may have received.

Respectfully,

G. W. RUMBLE,

Secretary.