

*Report and Index of
Underway Marine Geophysical Data*

Vancouver Expedition

Leg 33

(VANC33MV)

R/V Melville

(Issued Nov 2004)

Ports:

Honolulu, HI (28-Jul-2004)

to

San Diego, CA (28-Aug-2004)

Chief Scientist: Jim Swift
Scripps Institution of Oceanography
jswift@ucsd.edu

Computer Tech - Dan Jacobson
Resident Tech - Cambria Colt

Post-Cruise processing and report preparation by the
Shipboard Technical Support Group,
Scripps Institution of Oceanography
La Jolla, CA 92093-0223

Note: *This is an index of underway geophysical data edited and processed after the completion of the leg and is intended primarily for informal use within the institution. This document is not to be reproduced or distributed outside Scripps without prior approval of the chief scientist or Shipboard Technical Support, Scripps Institution of Oceanography, La Jolla, California 92093-0223*

STS Cruise ID#299

Report and Index of Navigation and Underway Geophysical Data

Contents:

Index Chart - give track of cruise leg, dates, ports.

Track Charts - annotated with dates and hour ticks.

Profiles - depth, magnetic and gravity free air anomaly vs. distance.

Sample Index - list of begin/end times and positions of all underway records as well as samples and measurements from other disciplines collected on the leg.

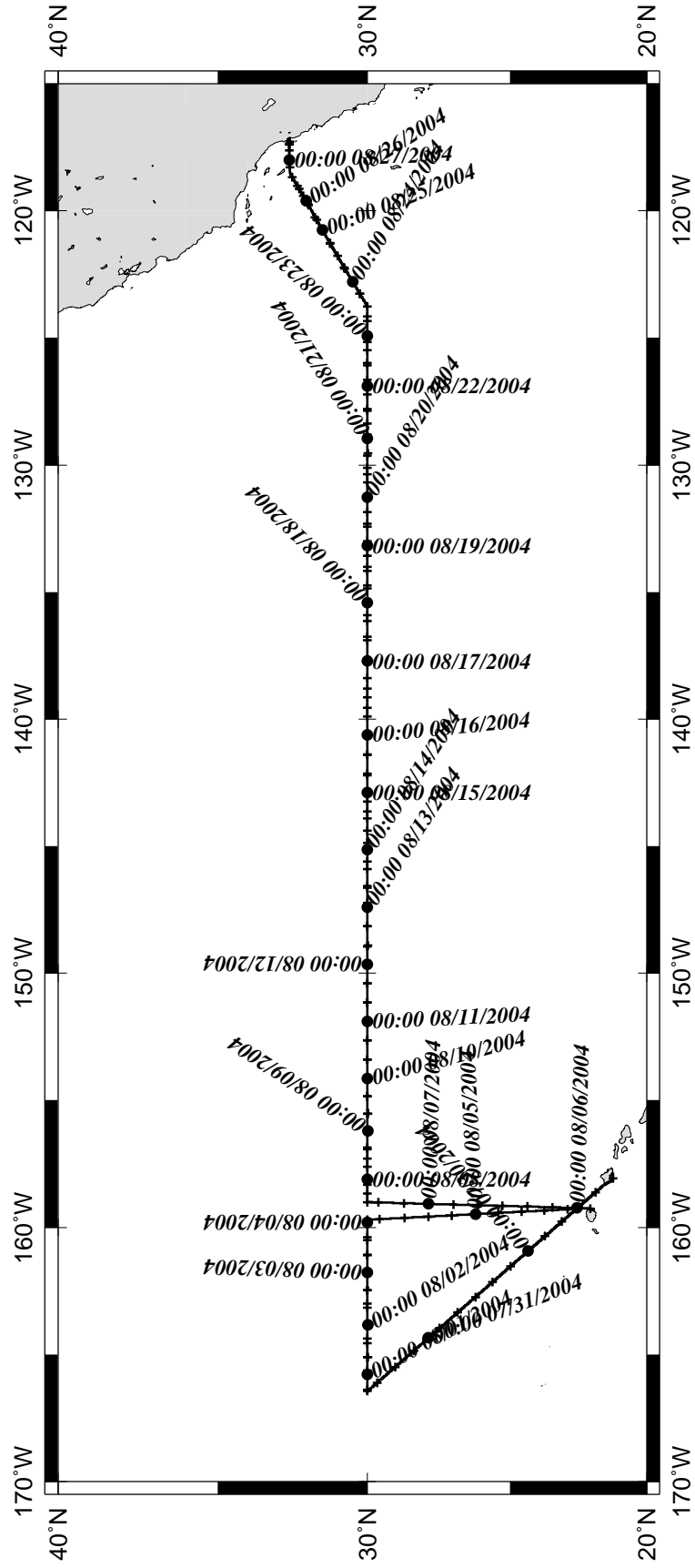
Note:

For information on the availability of this current digital data as well as archived digital data contact:

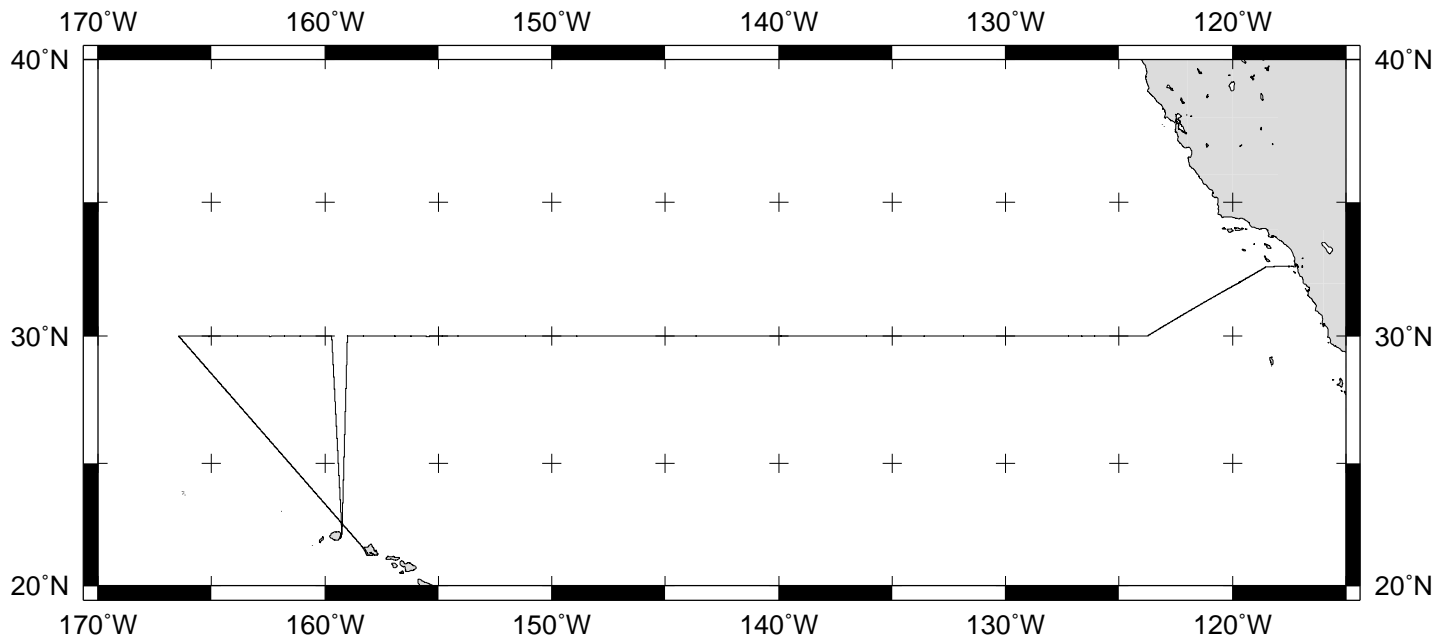
Stephen P. Miller
Geological Data Center
Scripps Institution of Oceanography
La Jolla, California 92093-0220
Phone: (858) 534-1898
Internet email: spmiller@ucsd.edu; or his website: <http://SIOExplorer@ucsd.edu>

Rev 05/2002

VANC333MV



GMT 2004 Nov 10 10:20:13 :Honolulu, Hawaii - San Diego, California 29 July - 27 August 2004:



VANCOUVER EXPEDITION LEG 33 (VANC33MV)

=====

CHIEF SCIENTIST: James Swift, Scripps Institution

PORTS: Honolulu, Hawaii - San Diego, California

DATES: 29 July - 27 August 2004

SHIP: R/V Melville

TOTAL MILEAGE OF UNDERWAY DATA COLLECTED

Cruise-4377 miles

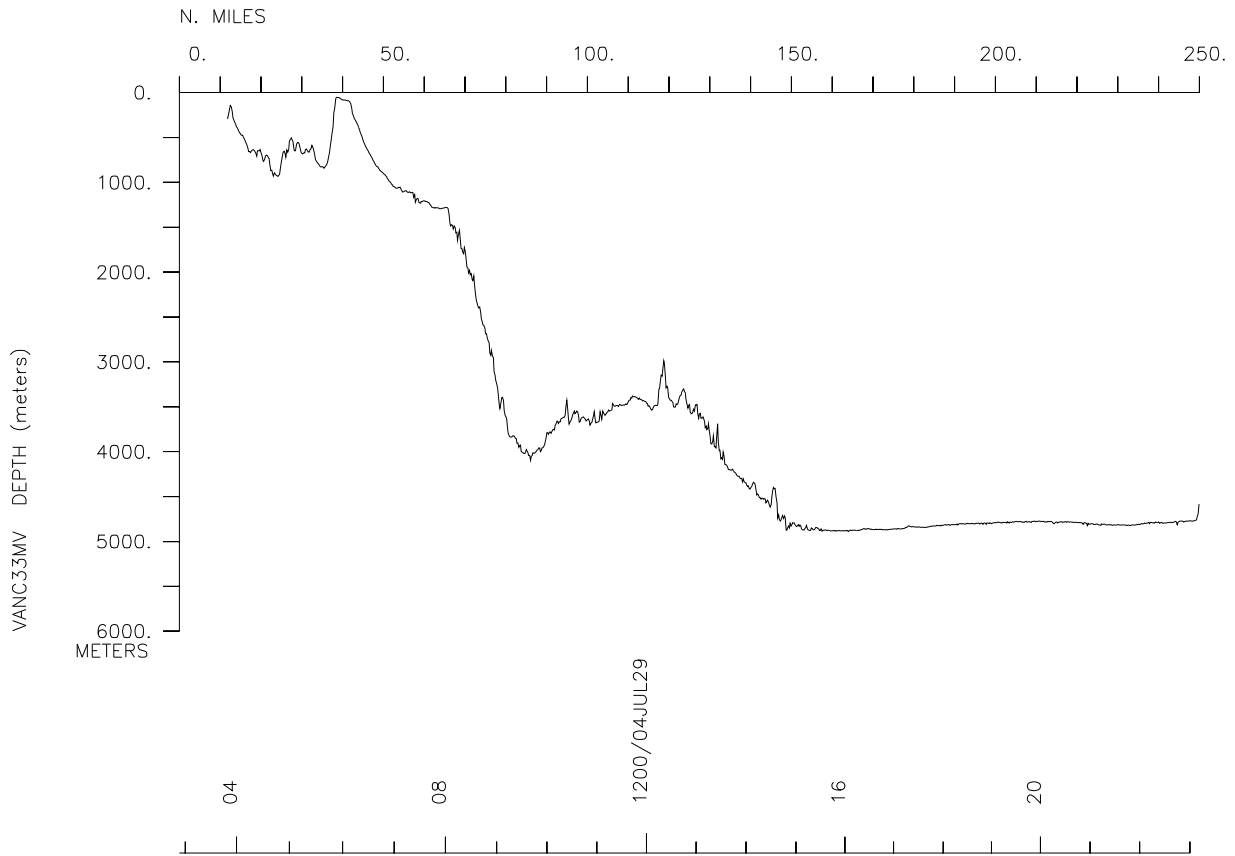
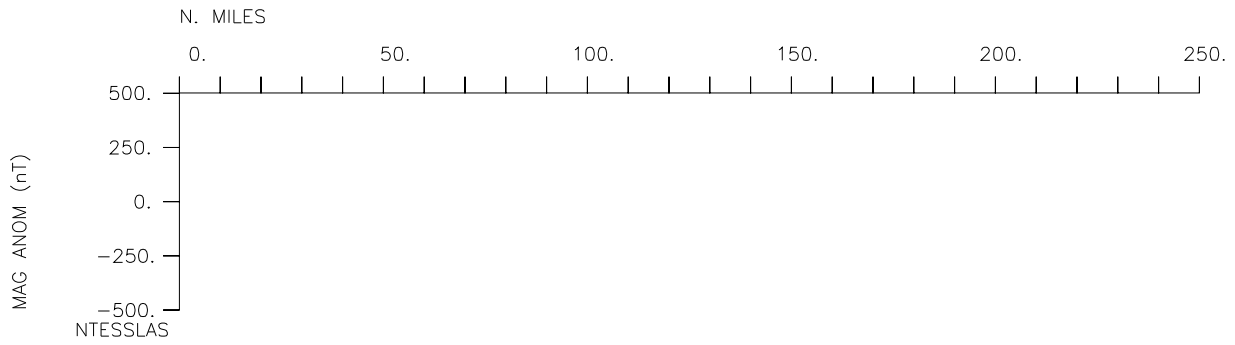
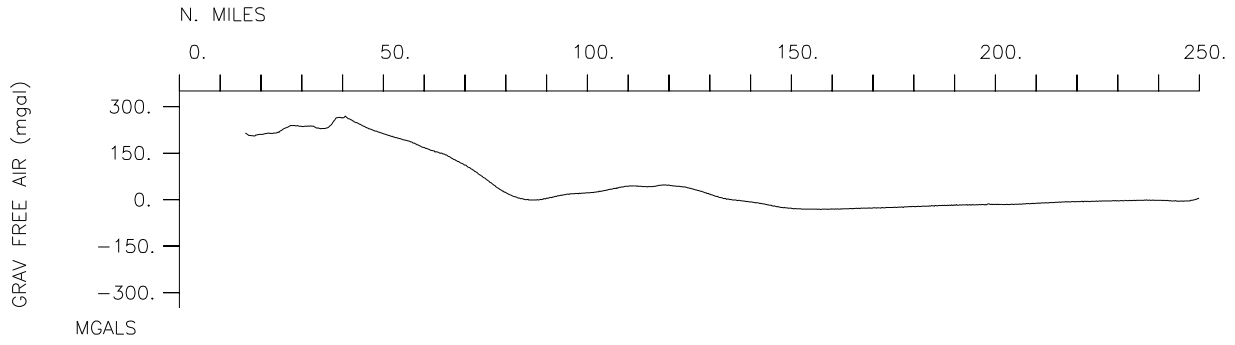
Magnetics-none collected

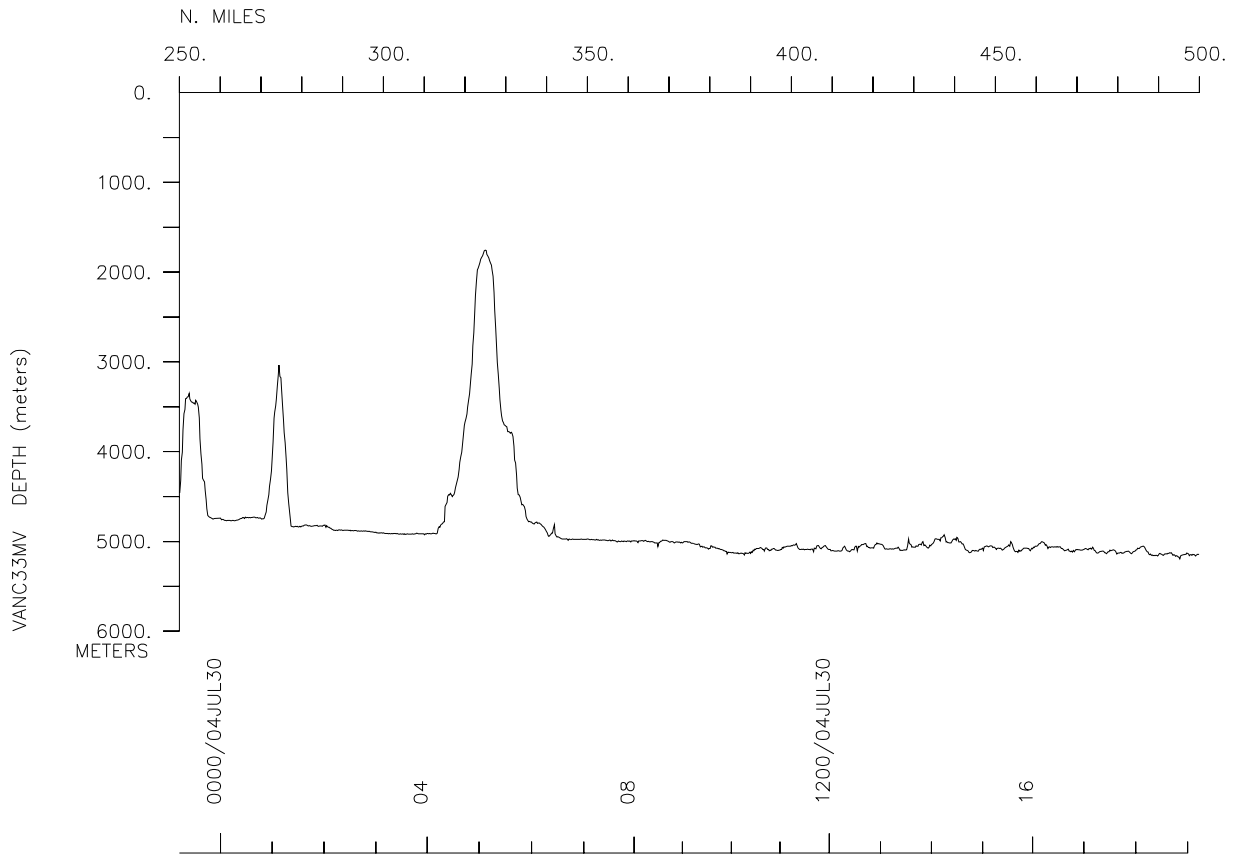
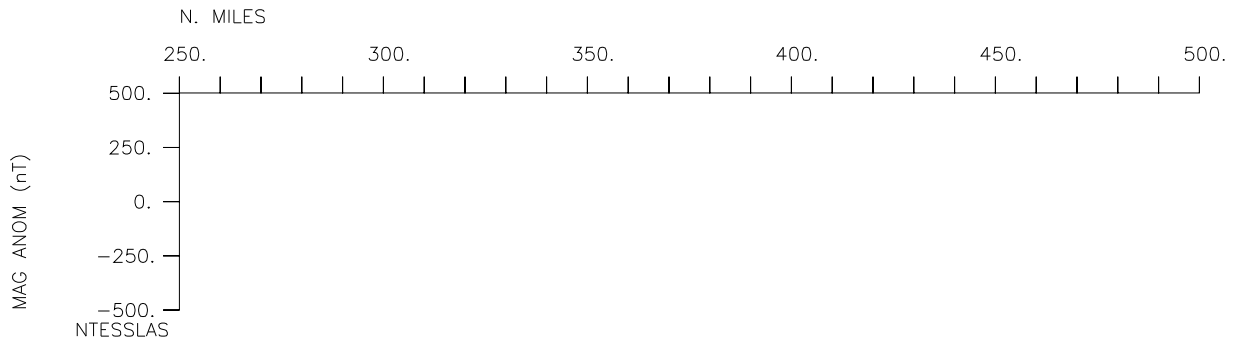
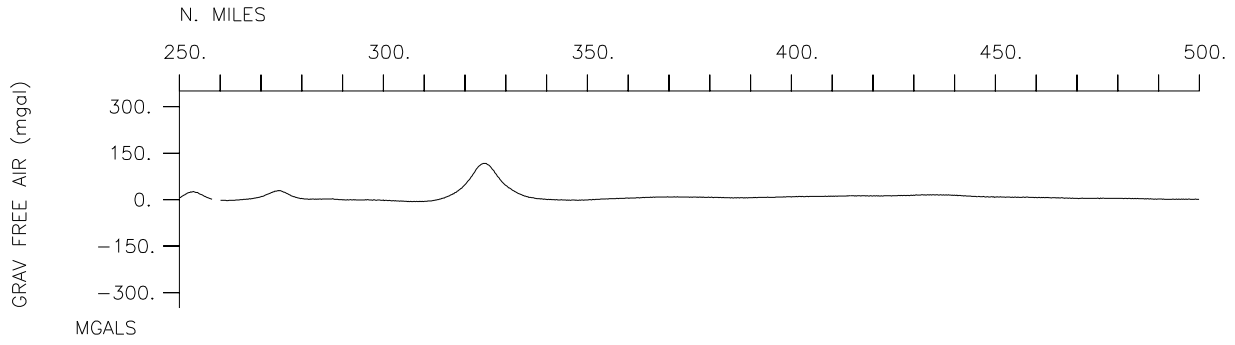
Bathymetry-4119 miles

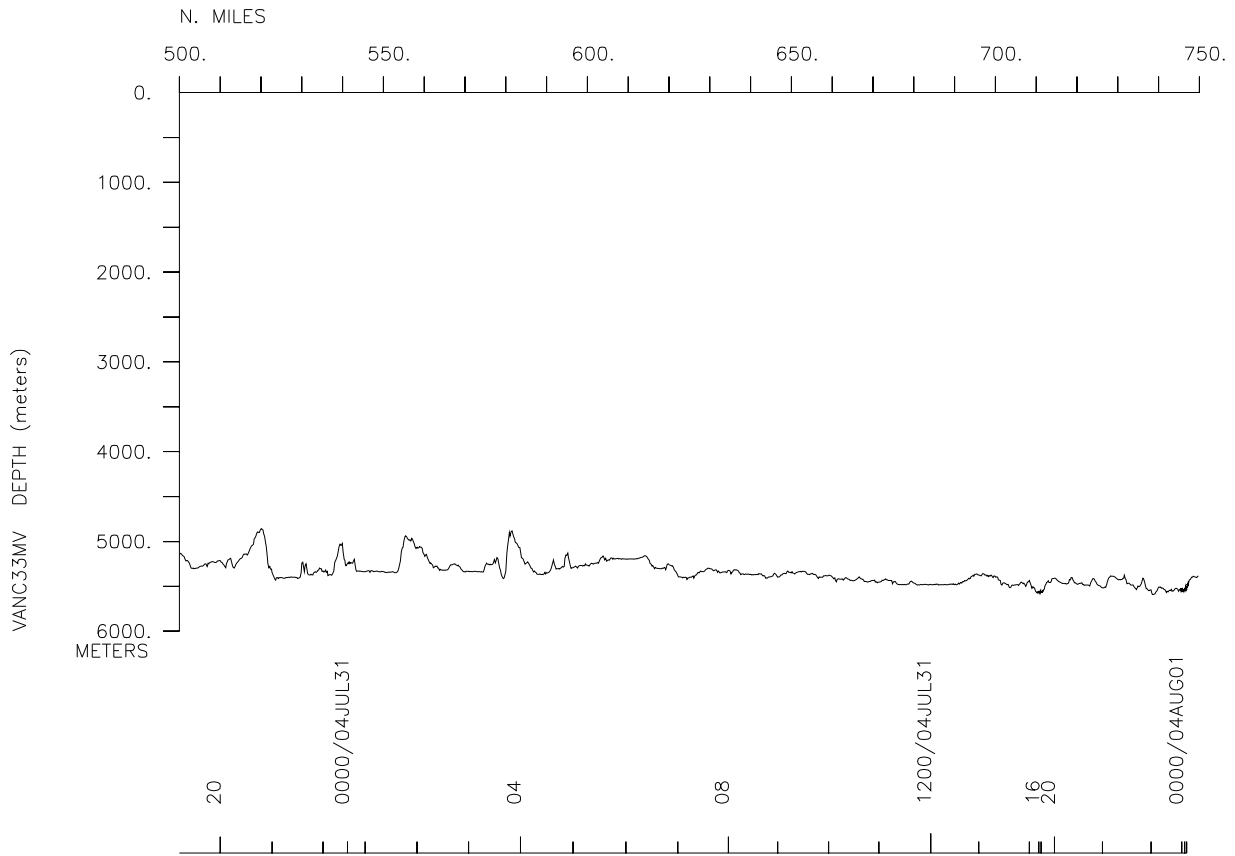
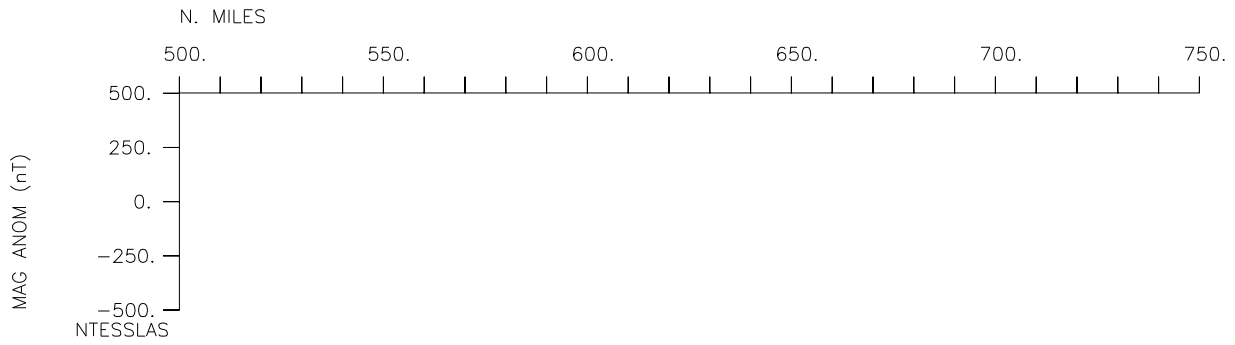
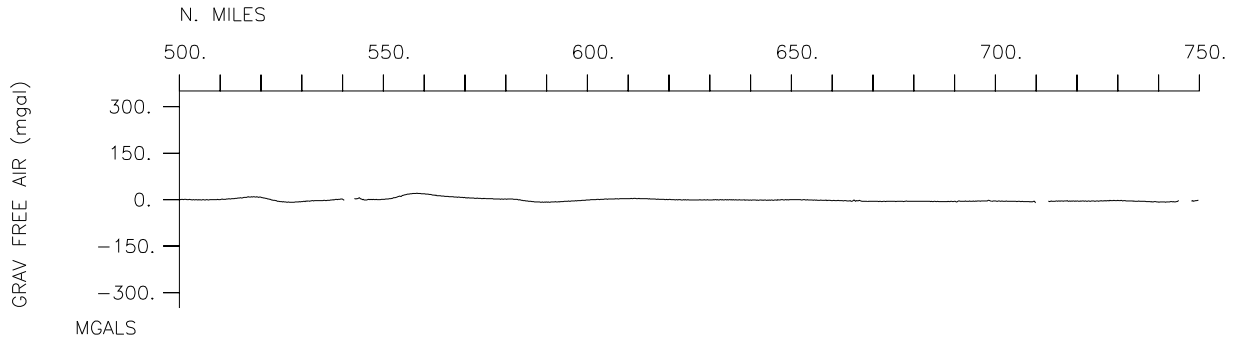
Seismic Reflection-none collected

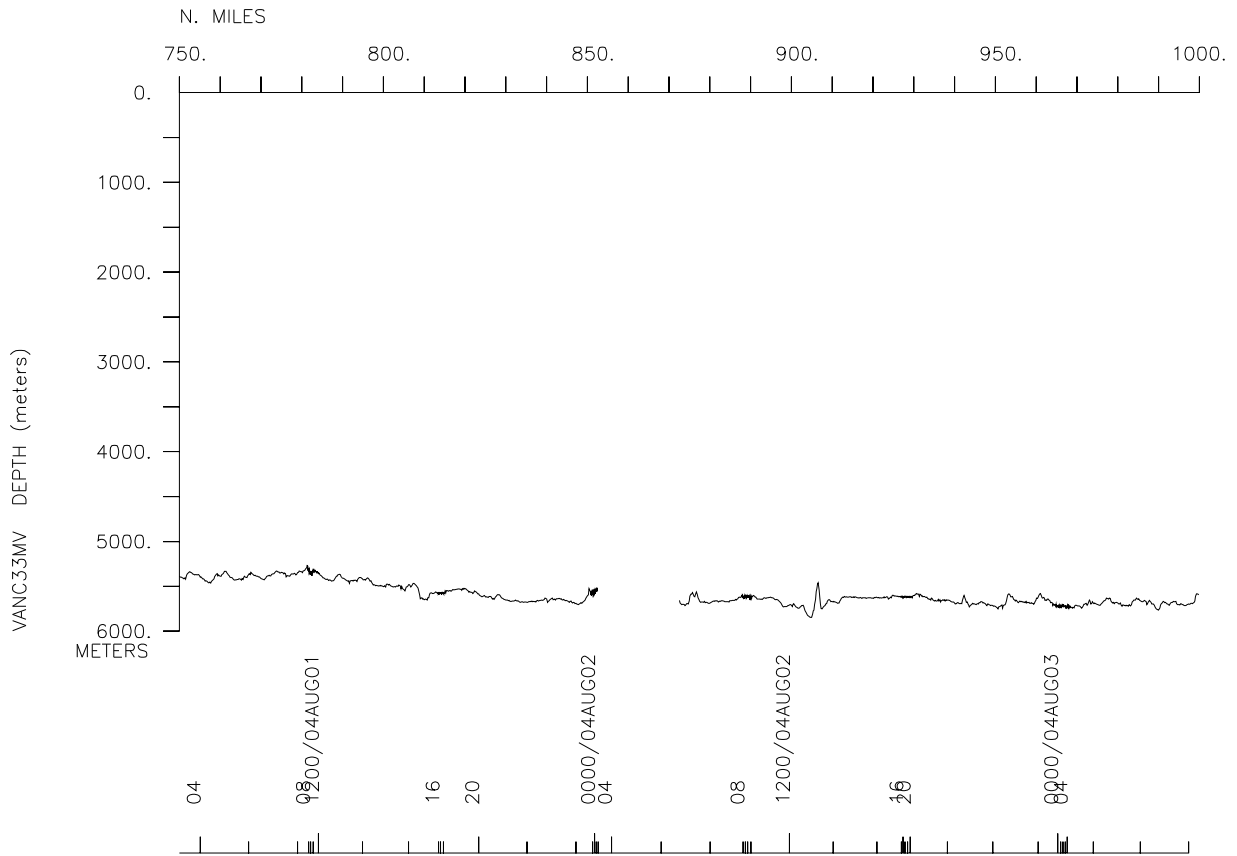
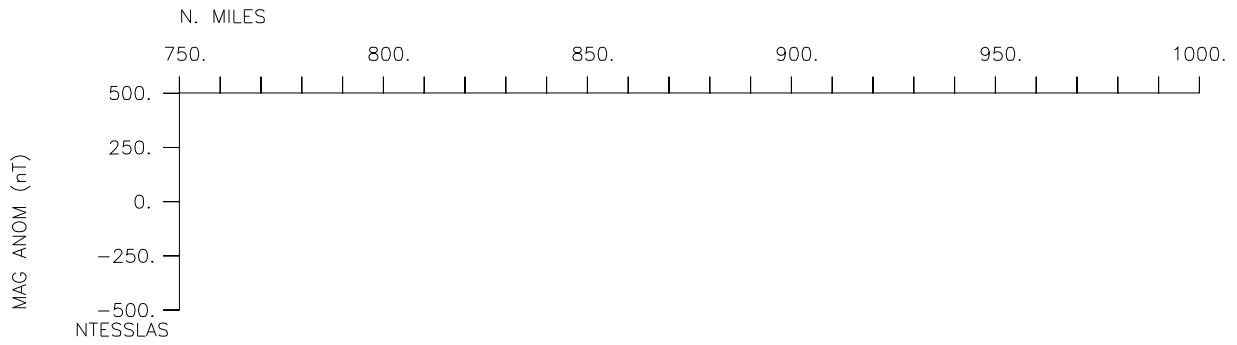
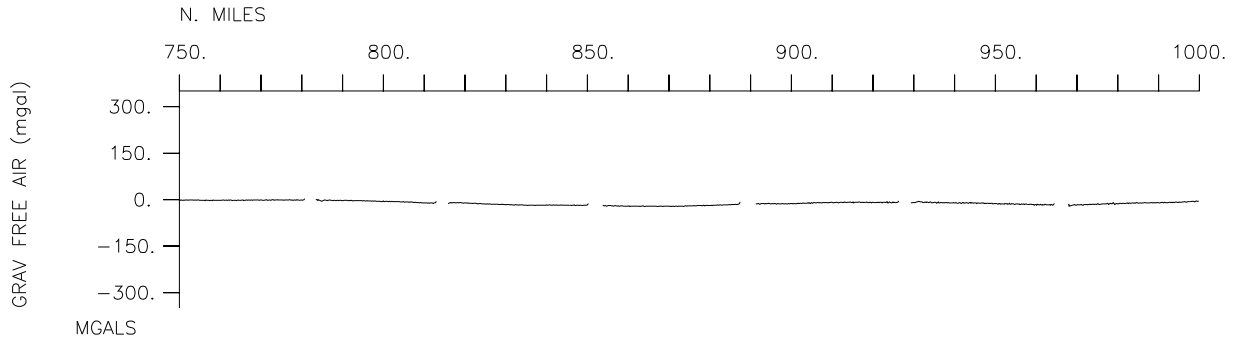
Multibeam-4119 miles

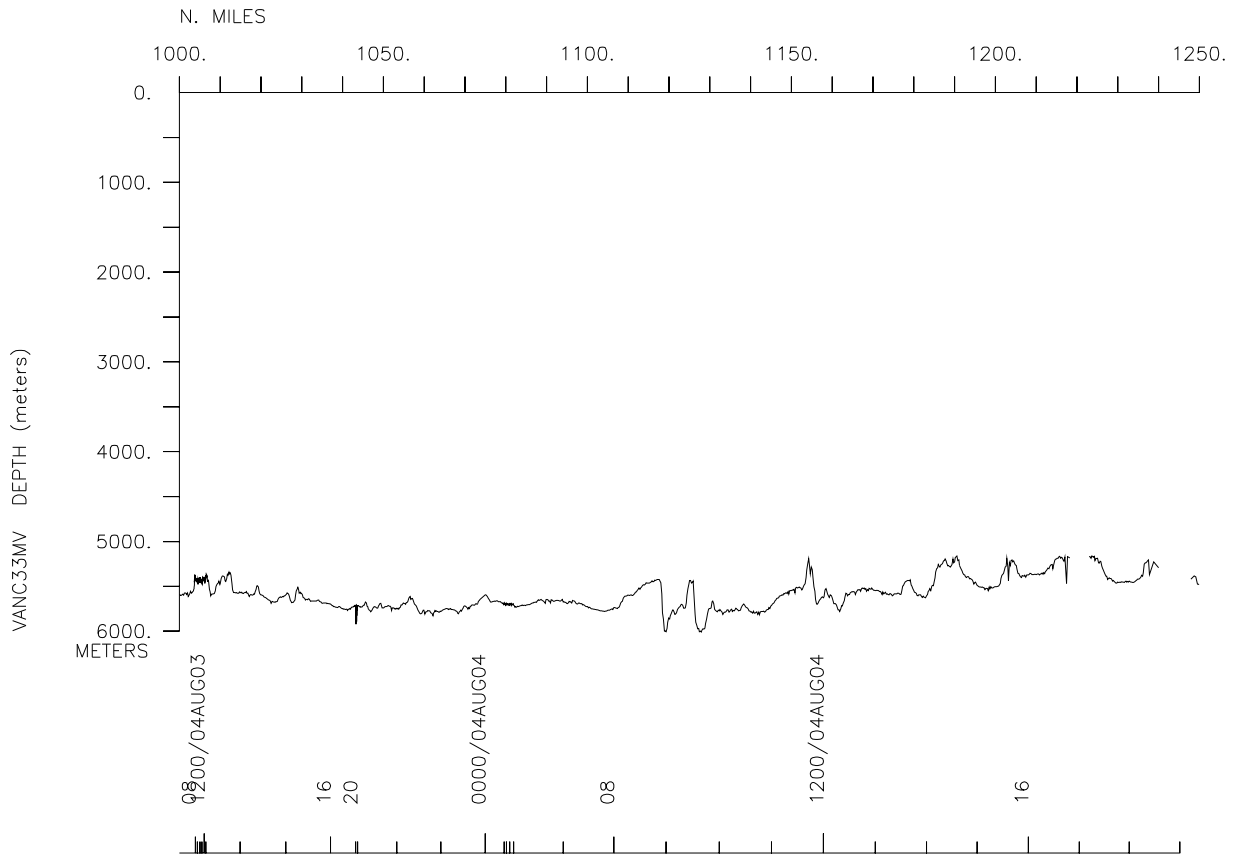
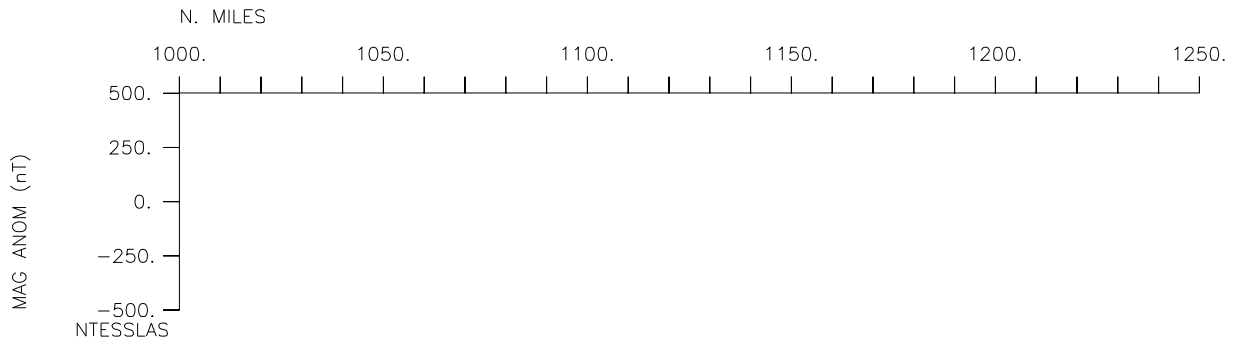
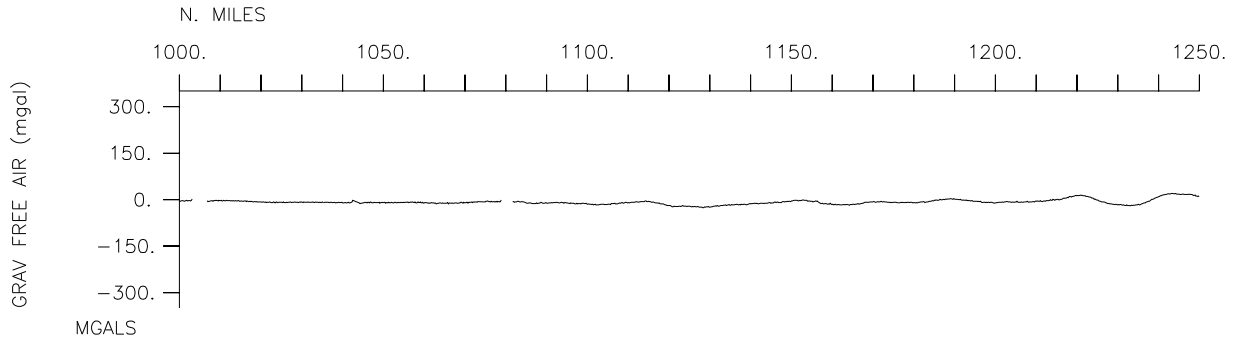
Gravity-4377 miles

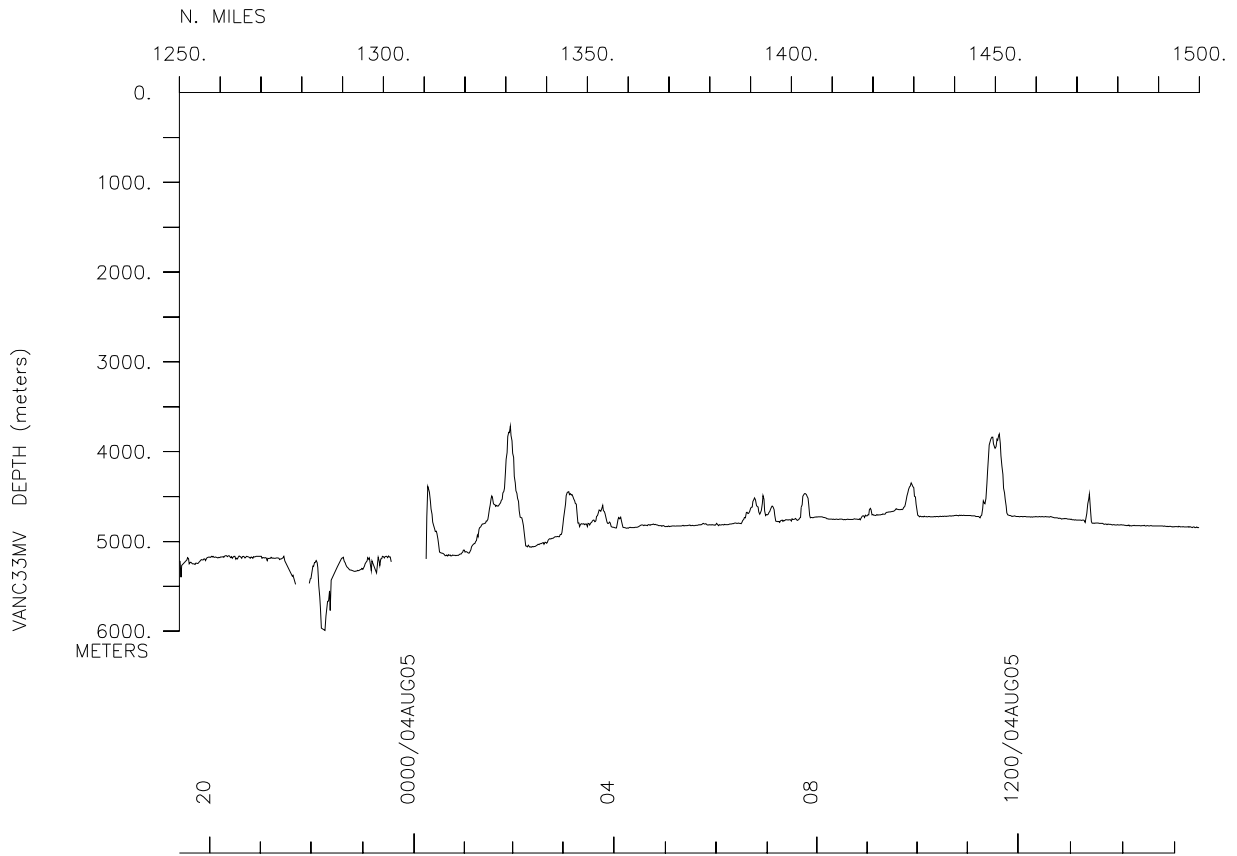
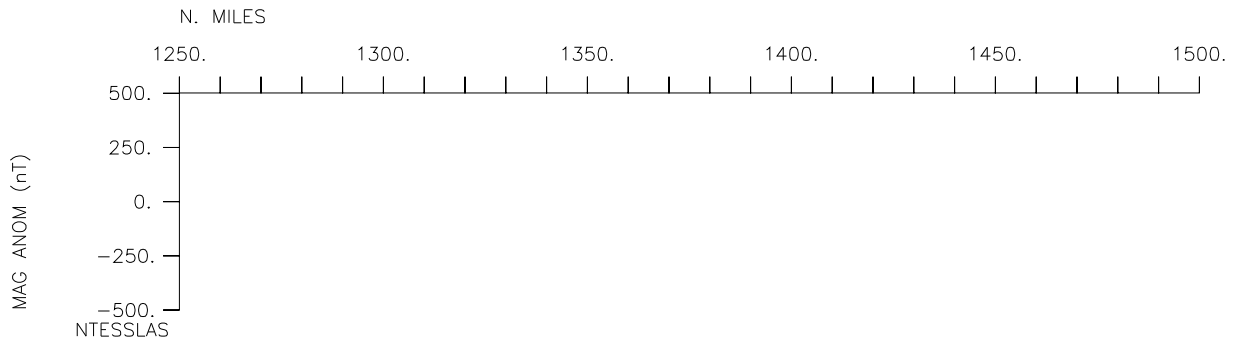
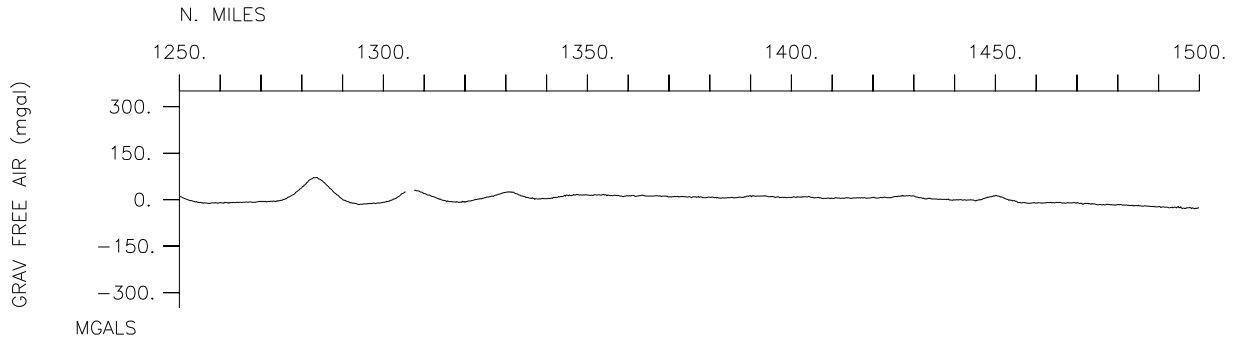


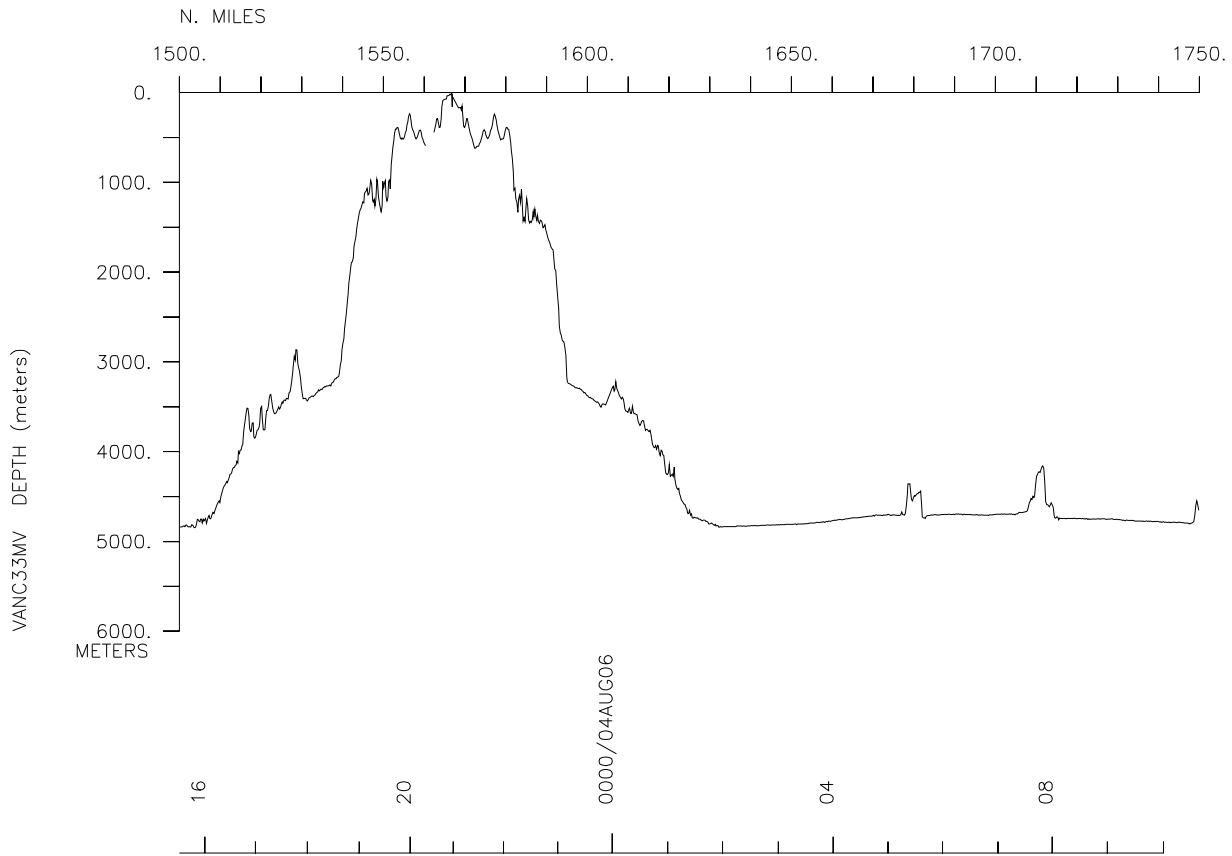
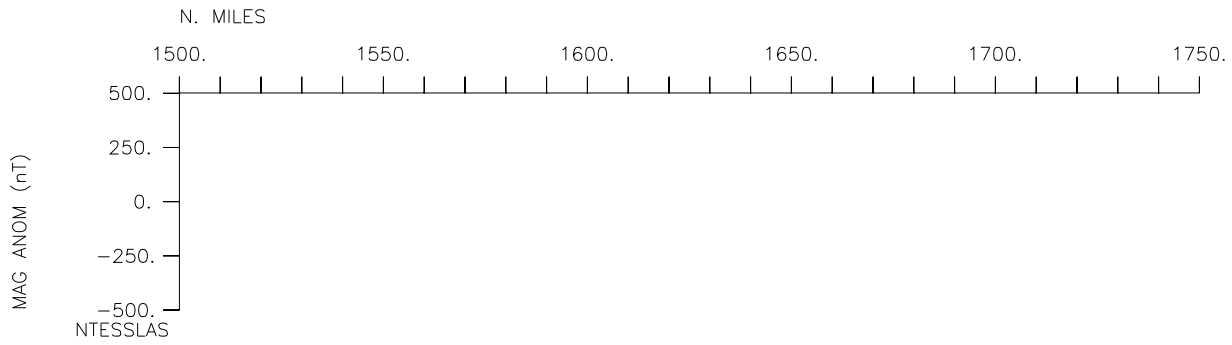
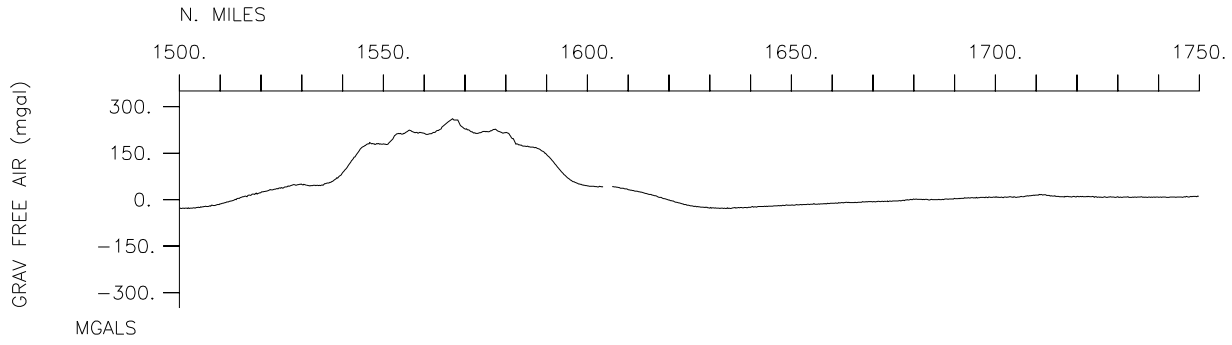


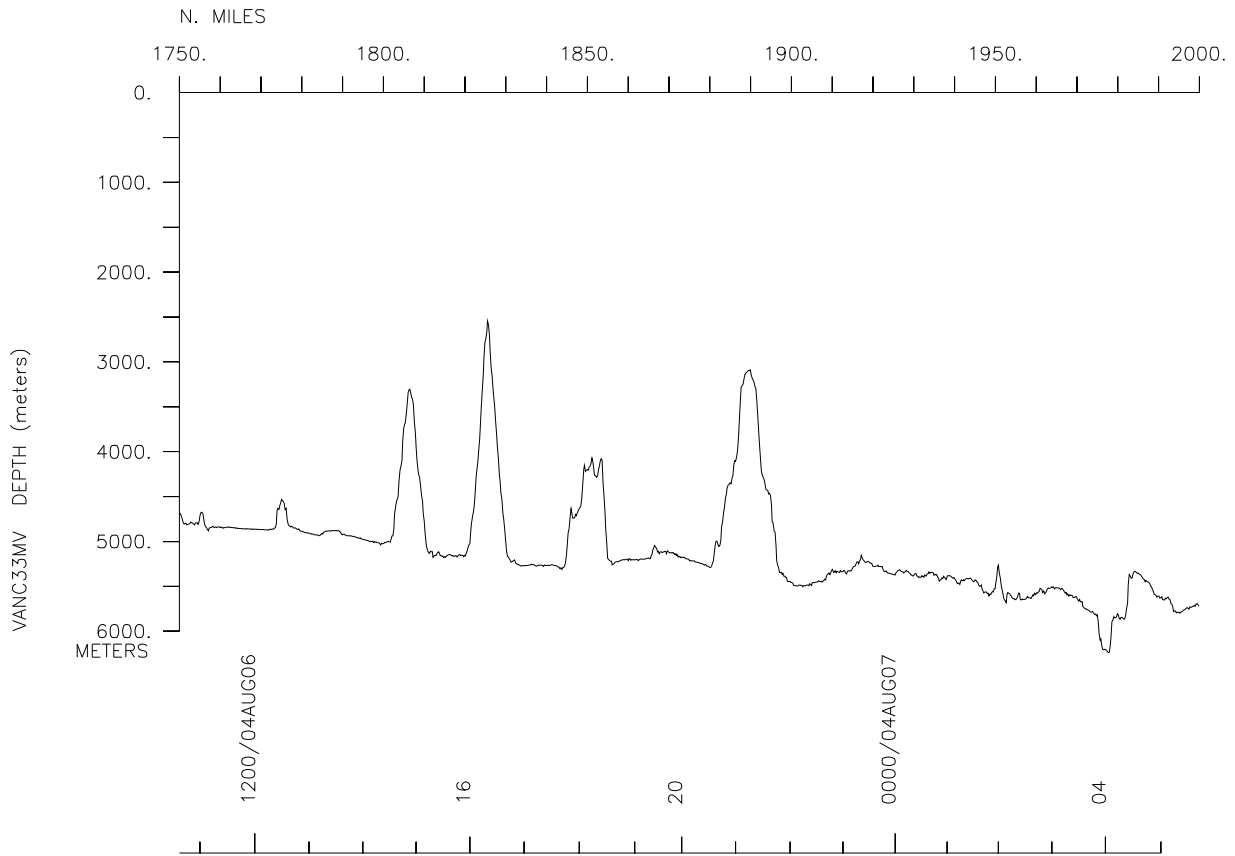
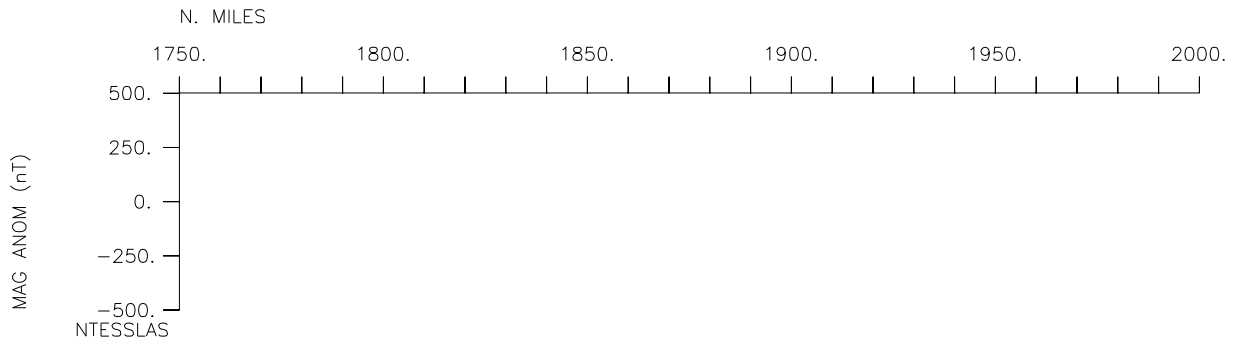
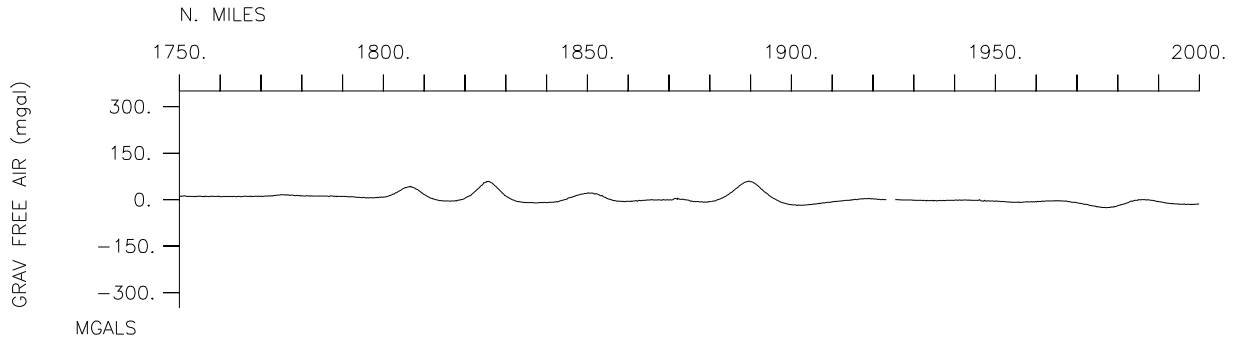


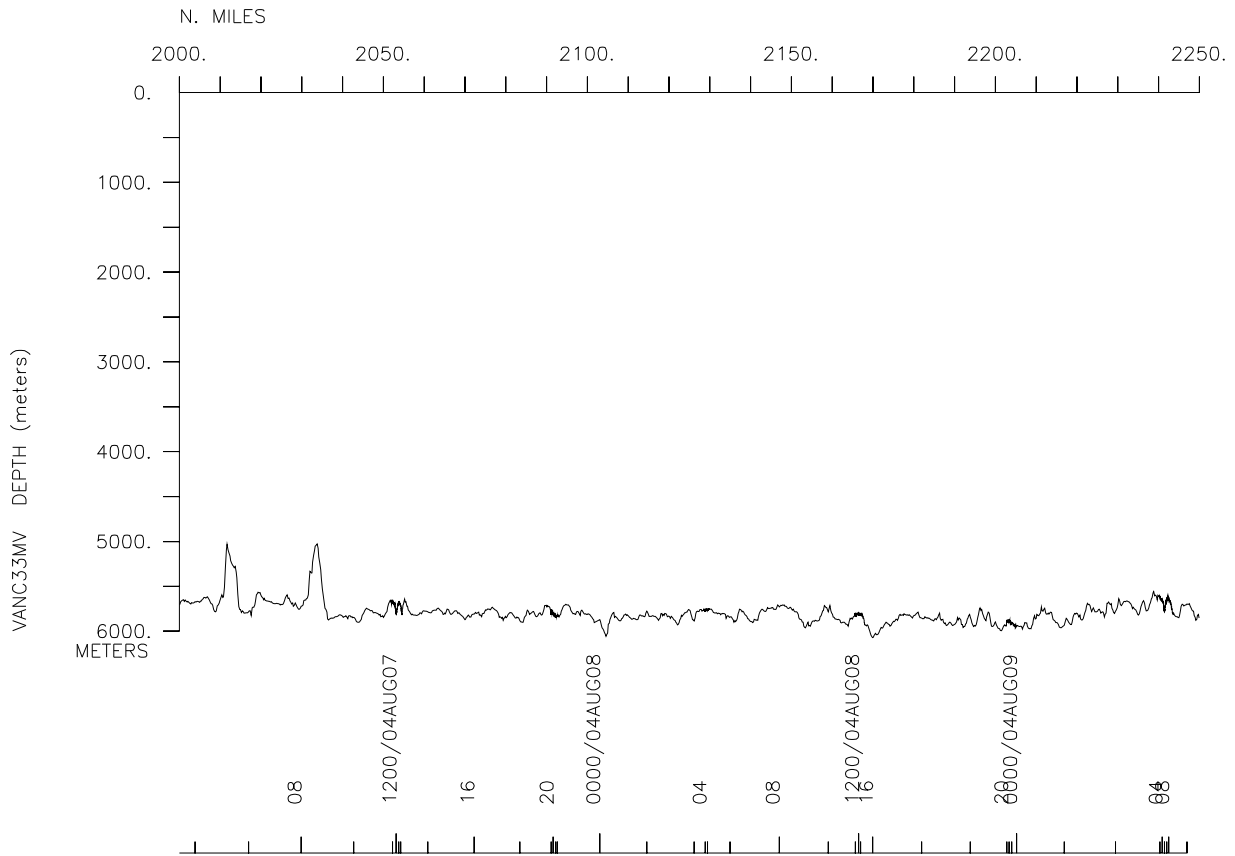
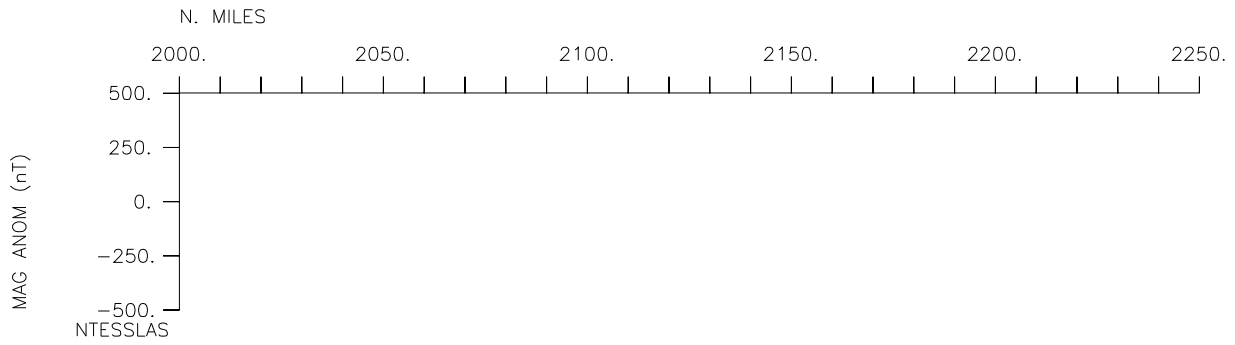
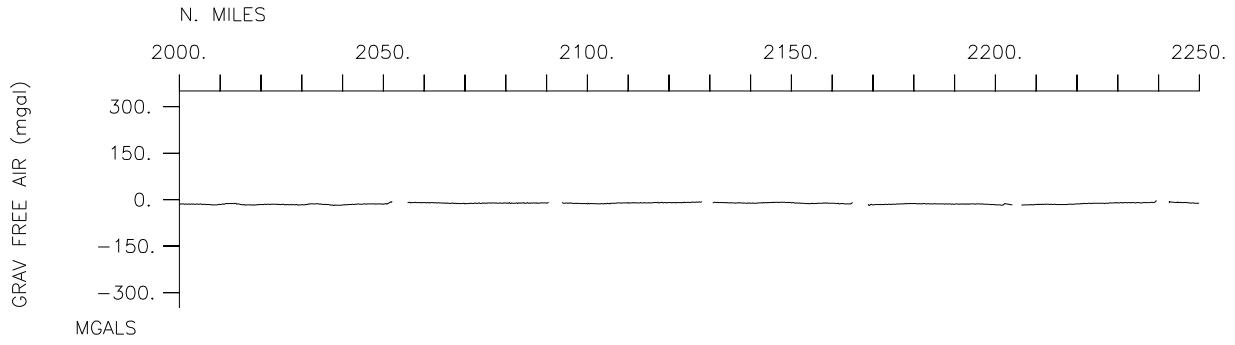


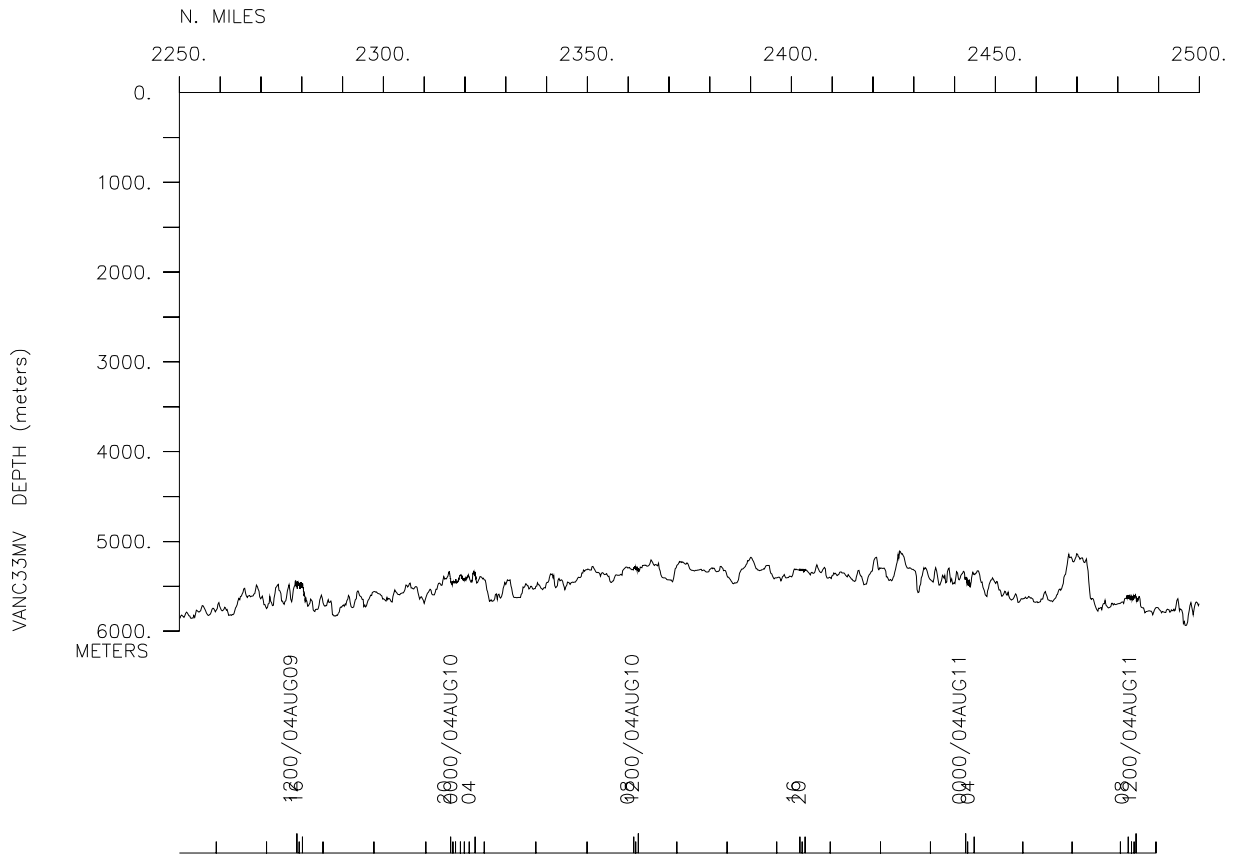
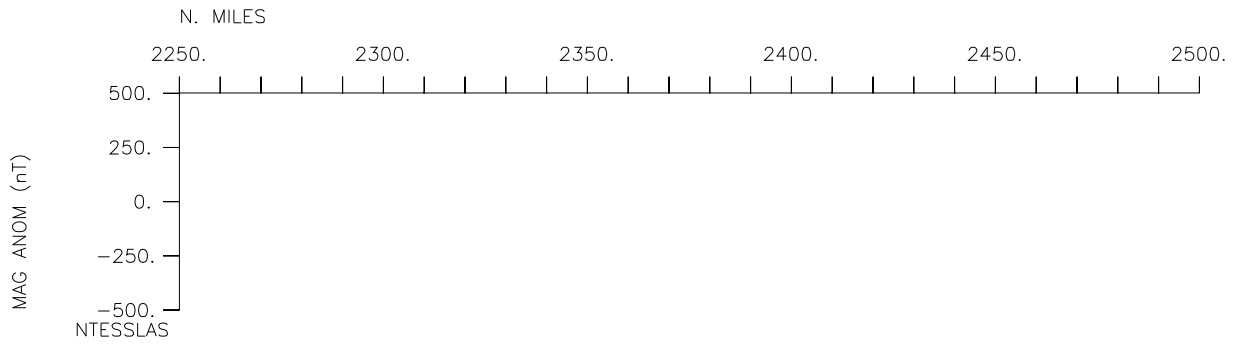
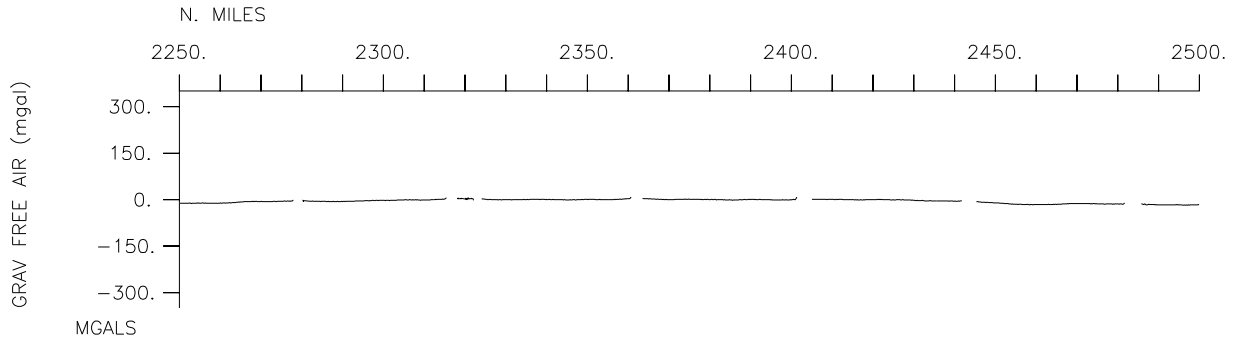


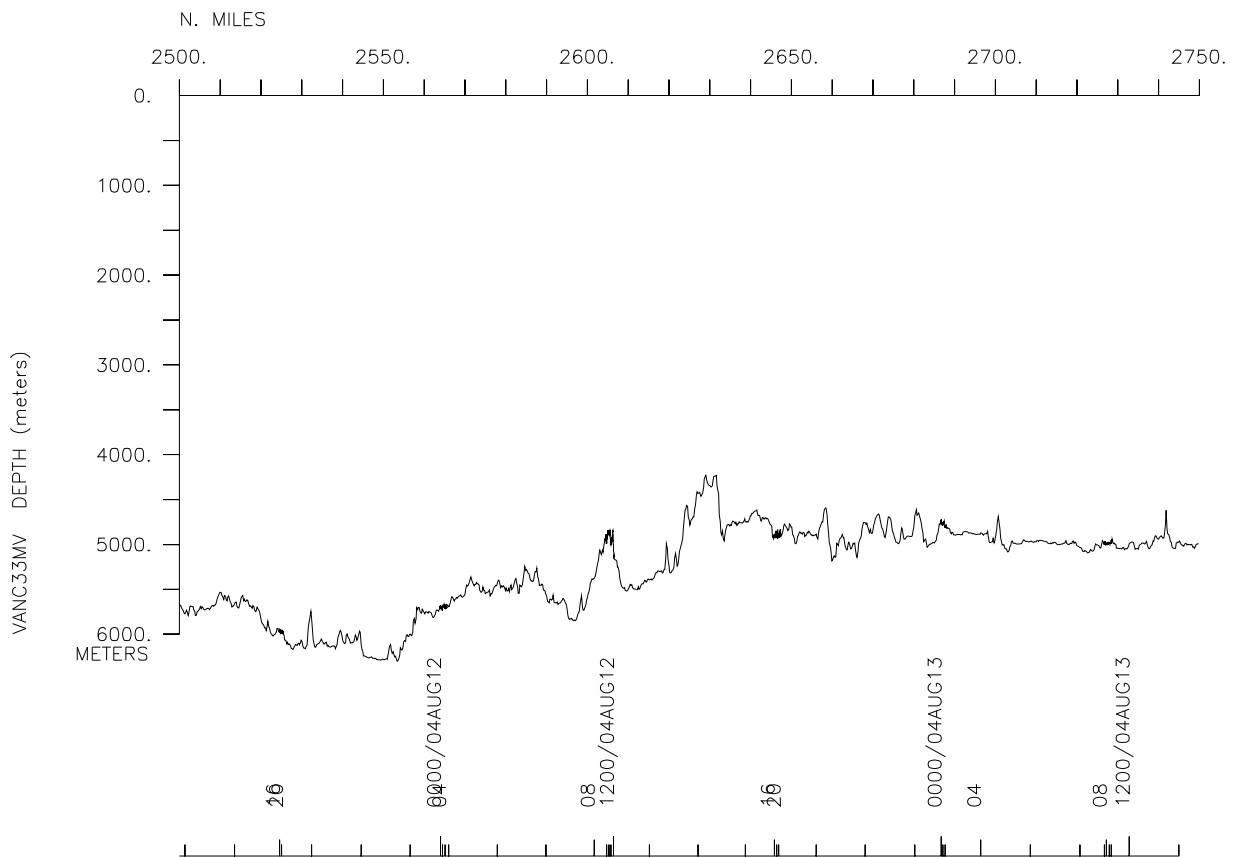
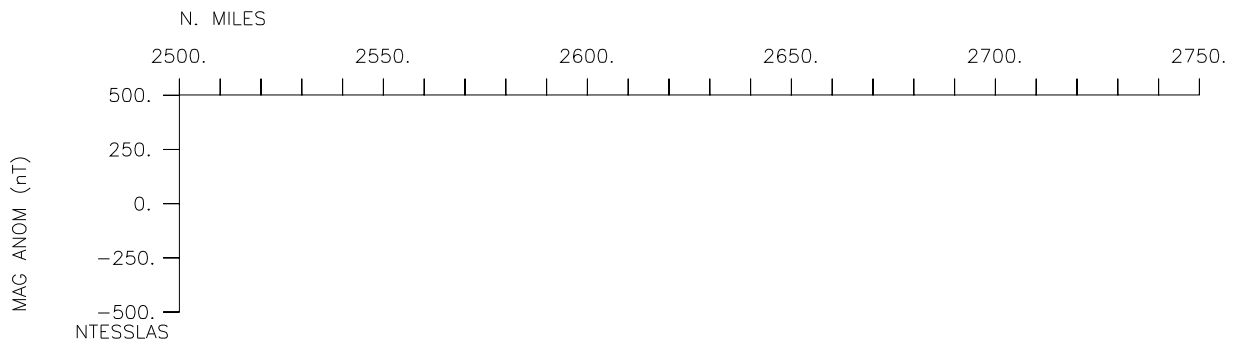
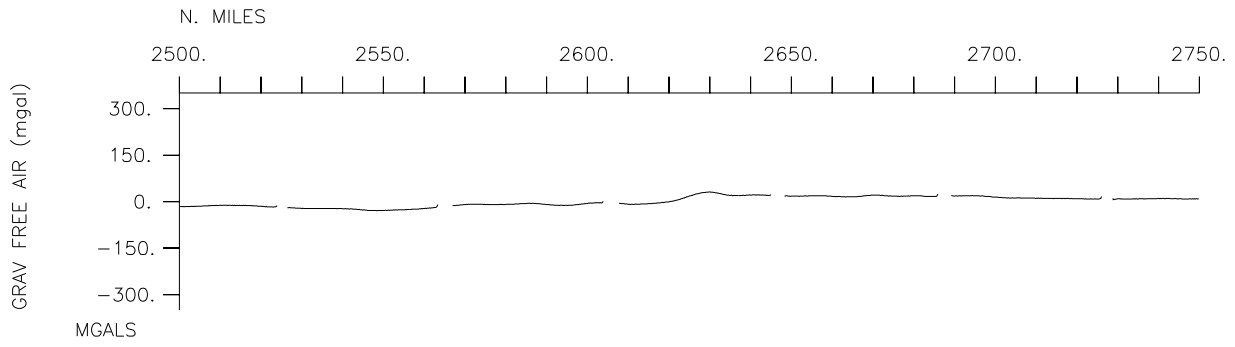


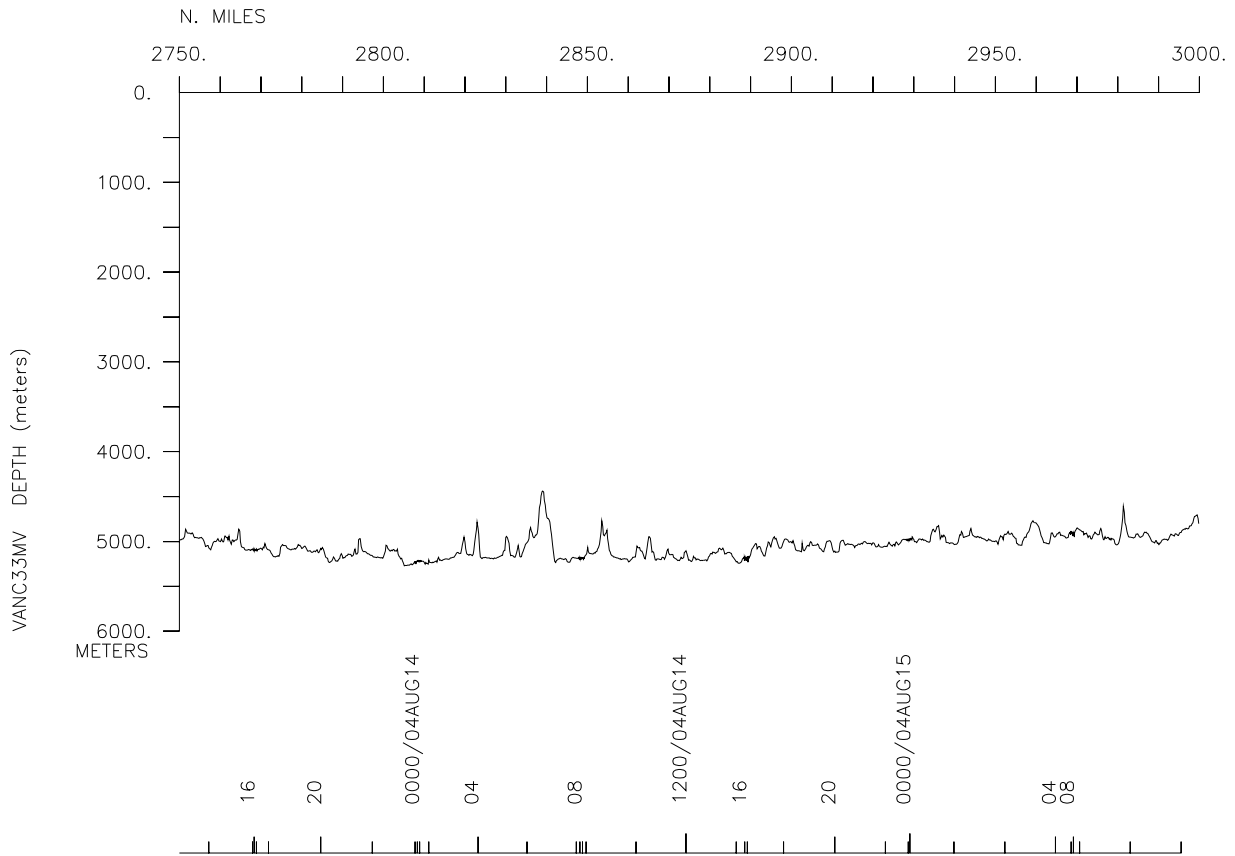
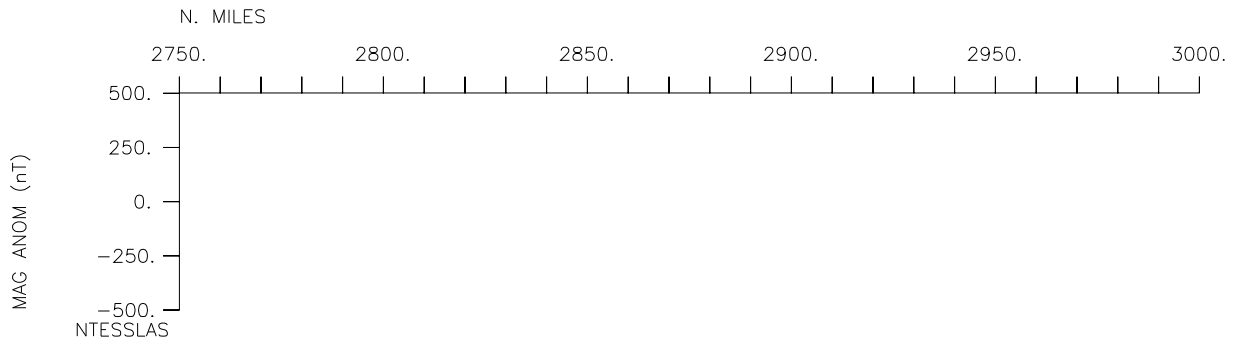
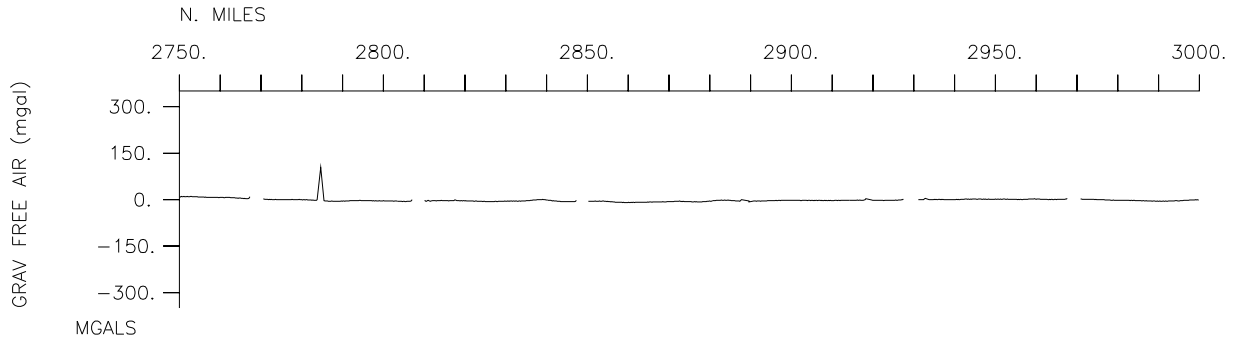


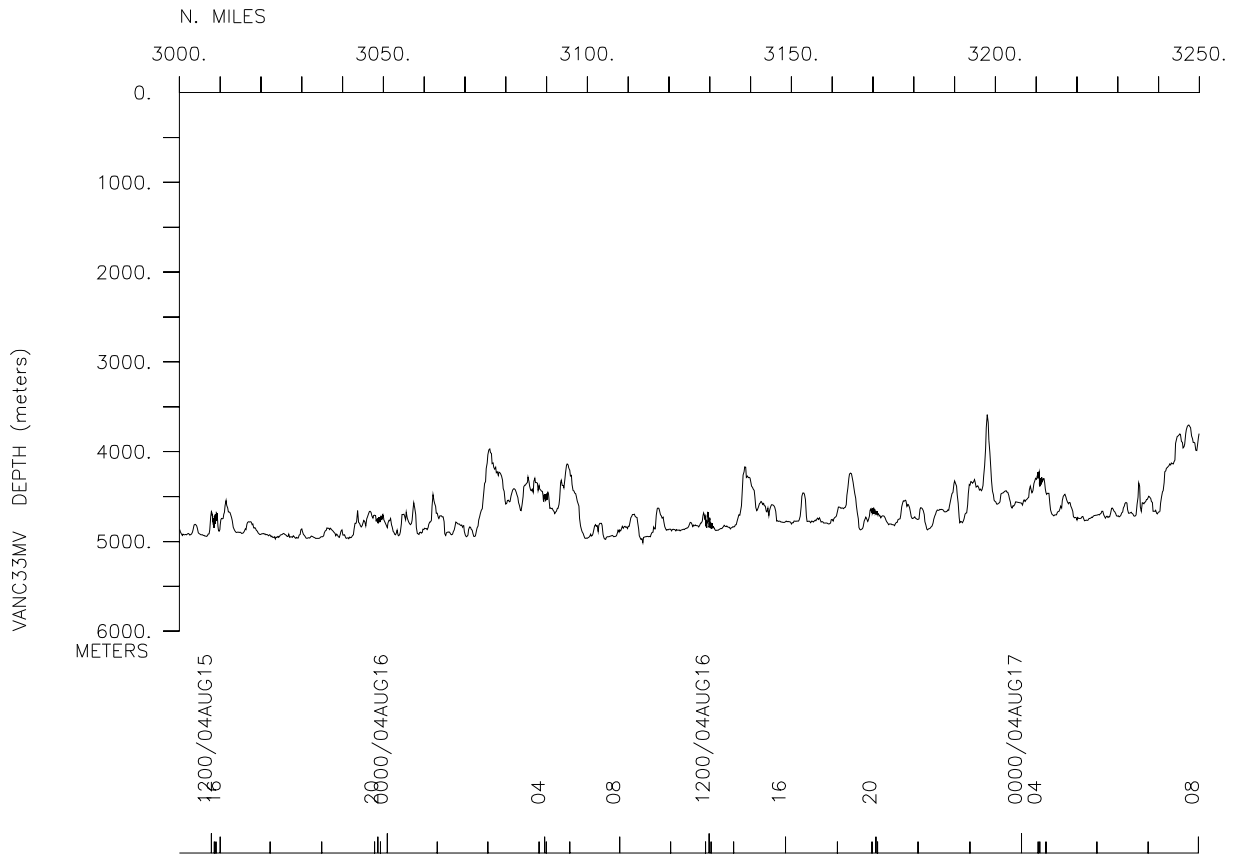
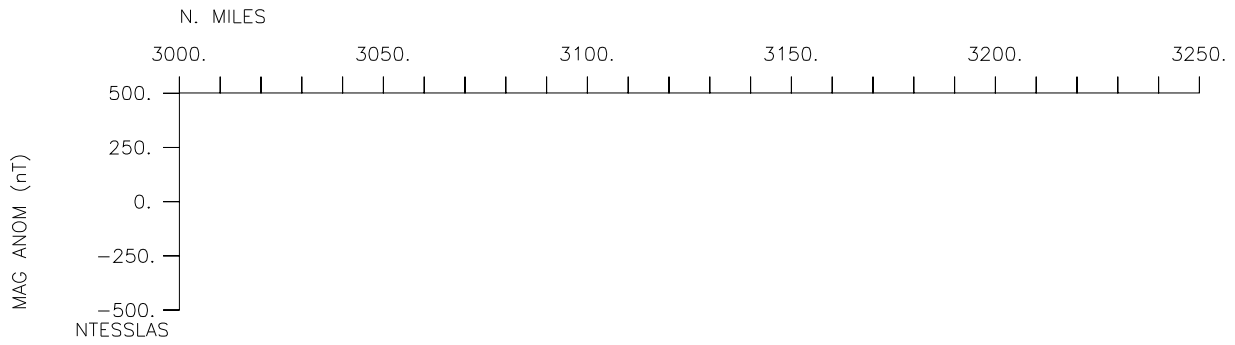
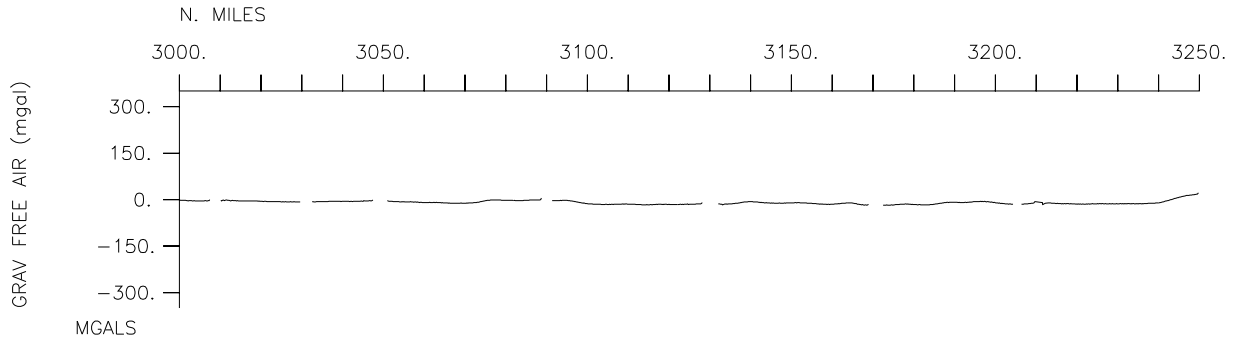


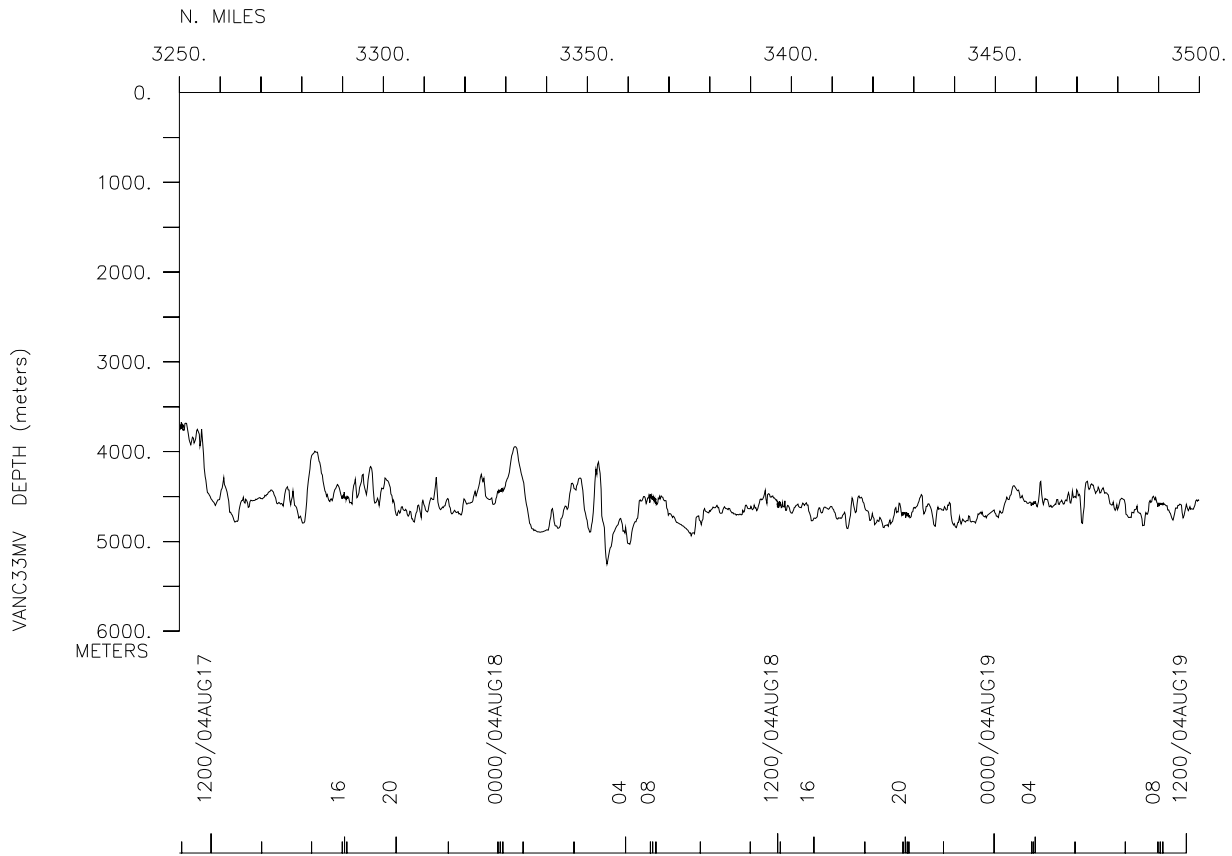
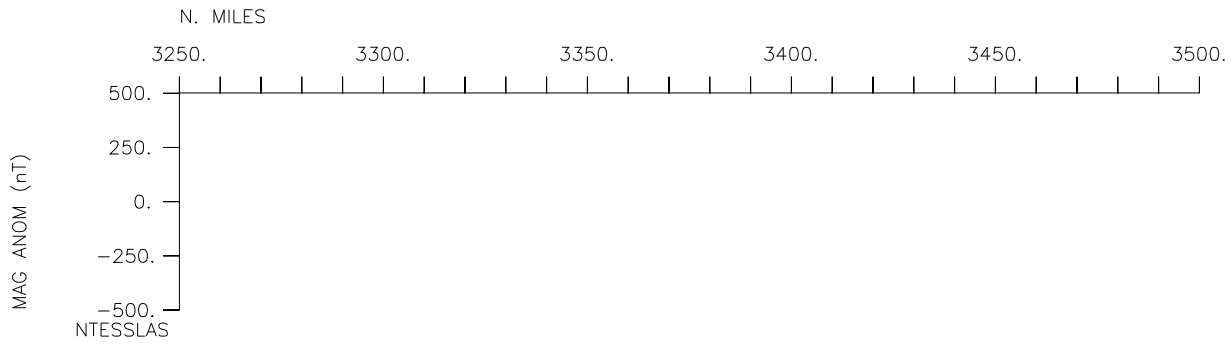
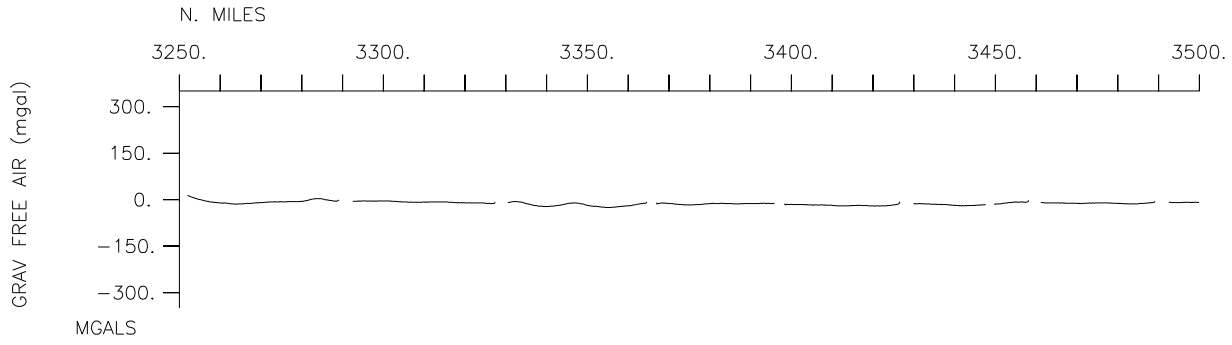


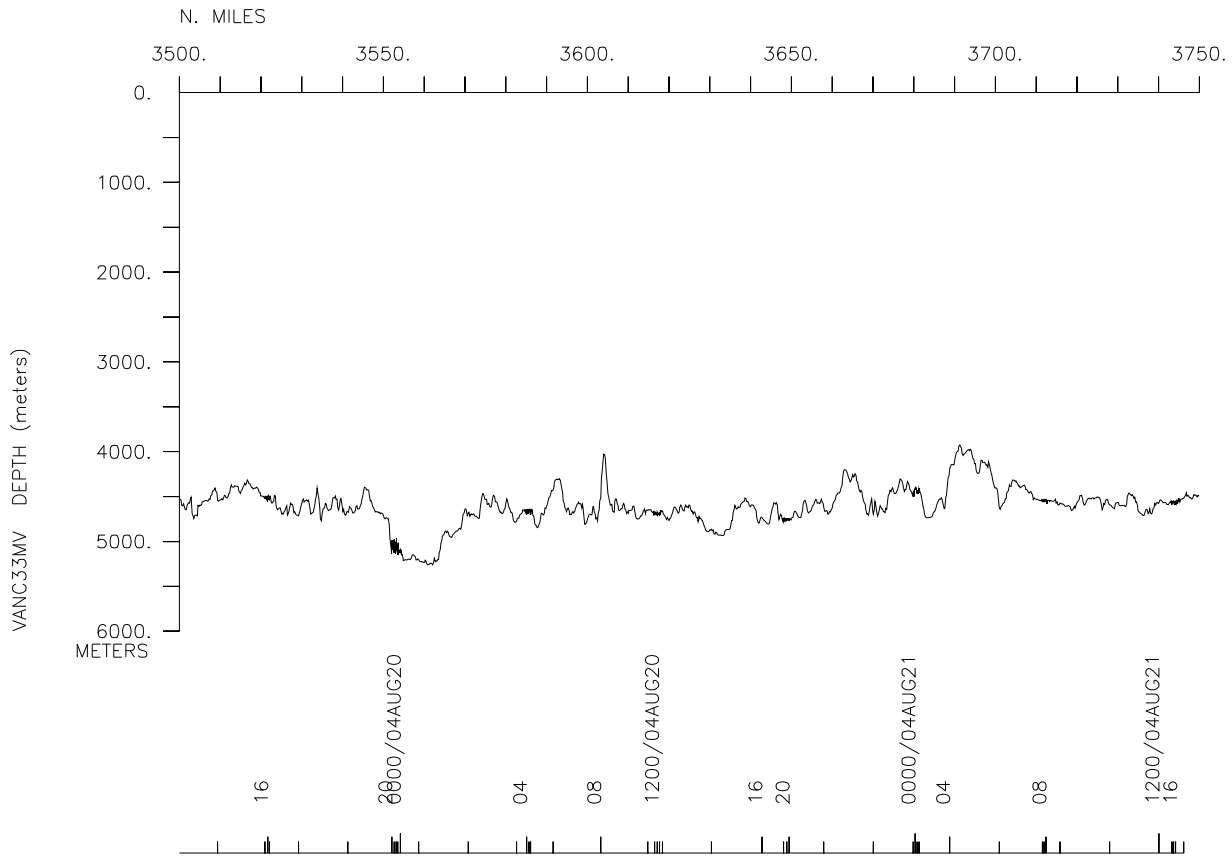
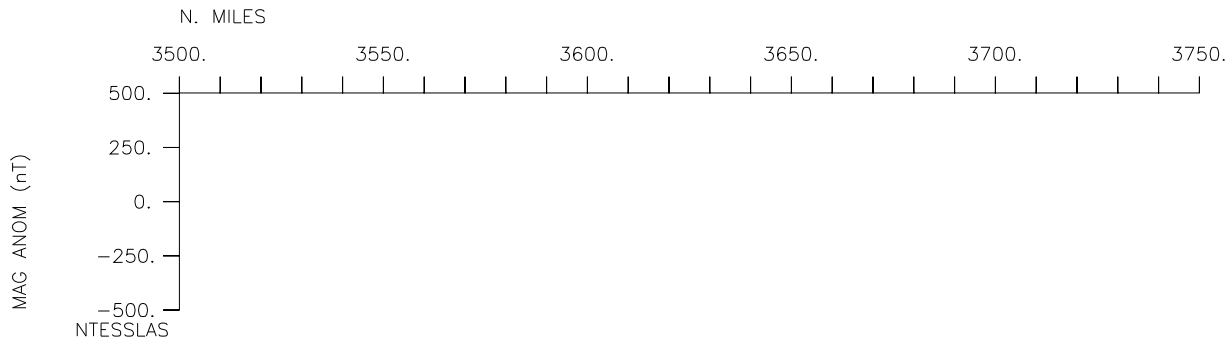
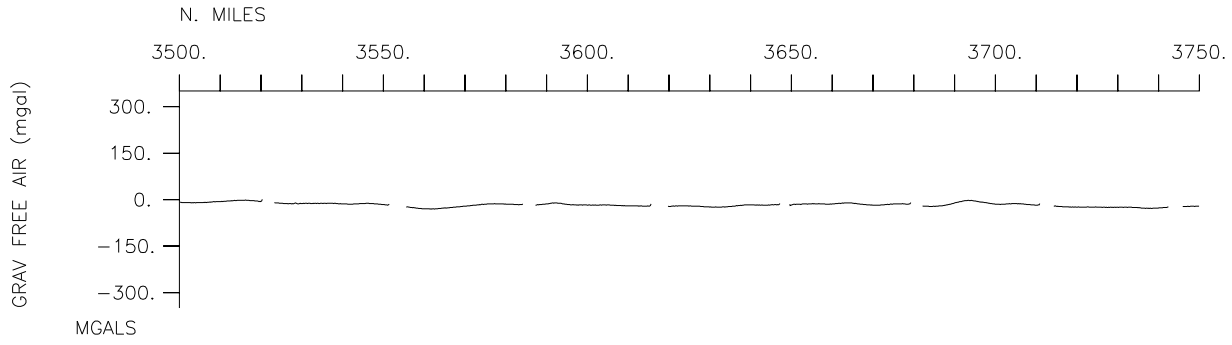


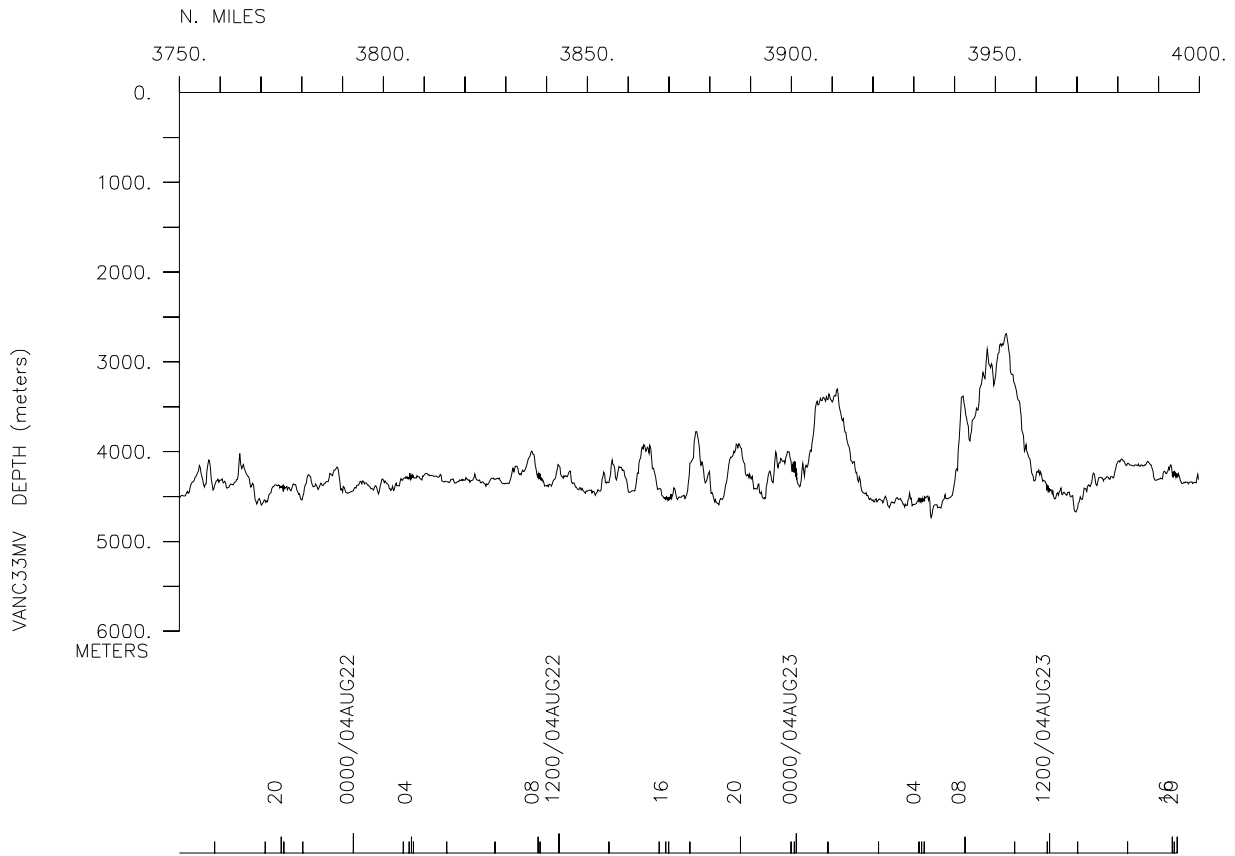
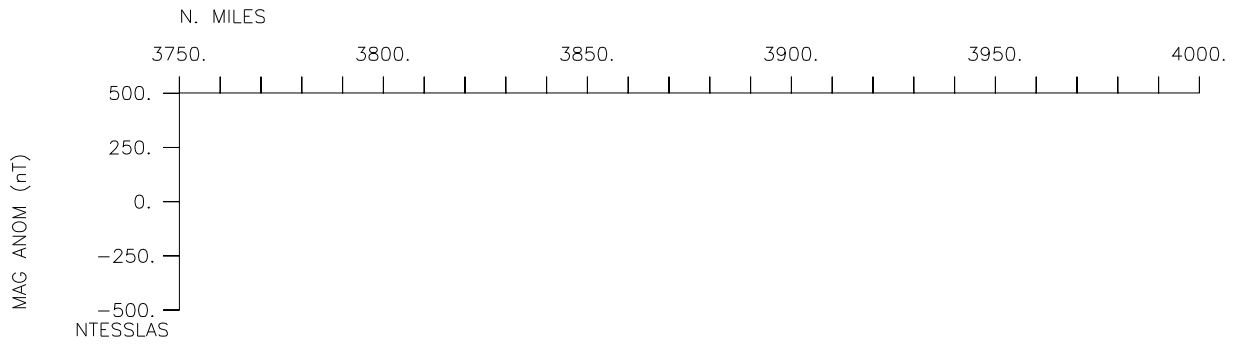
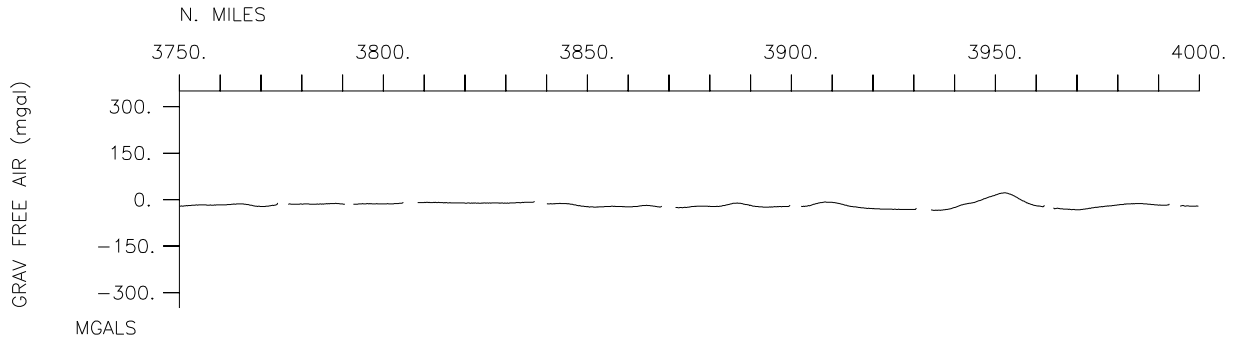


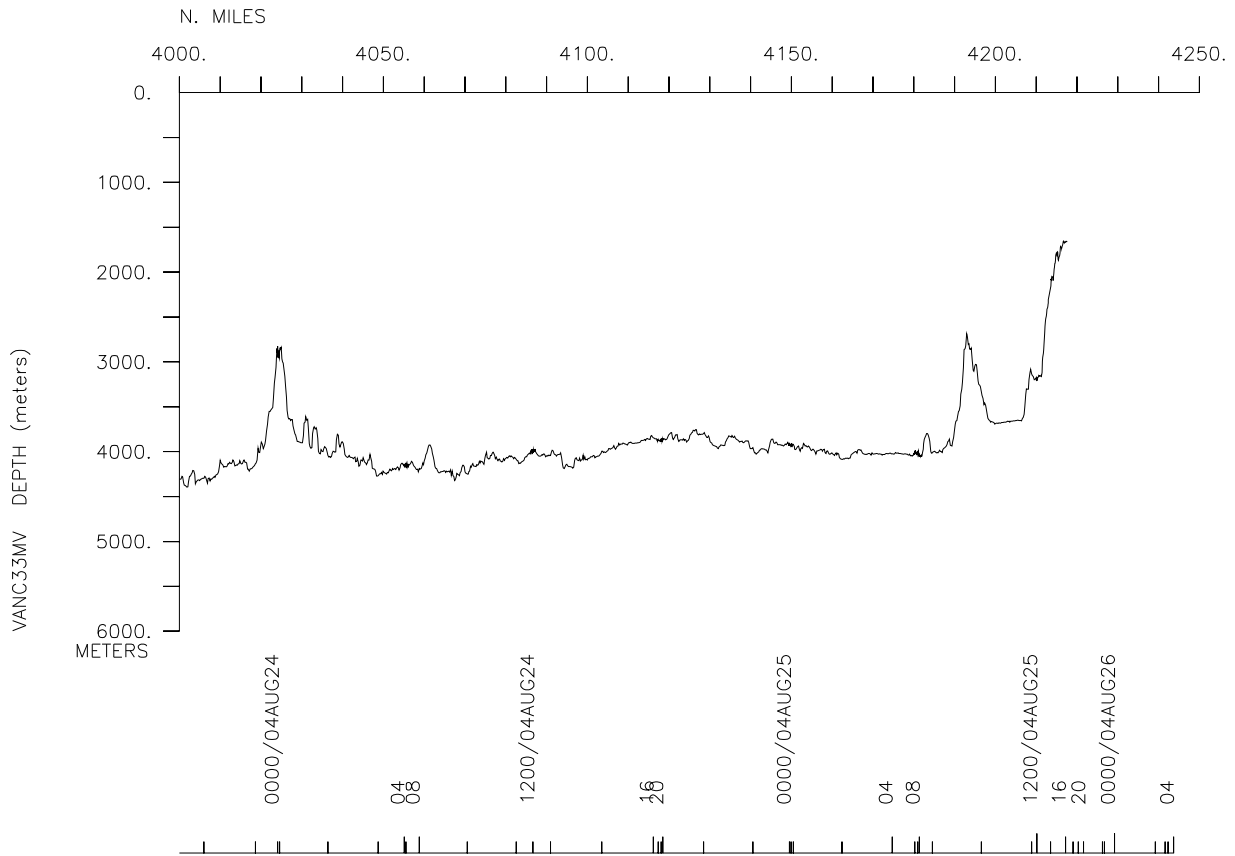
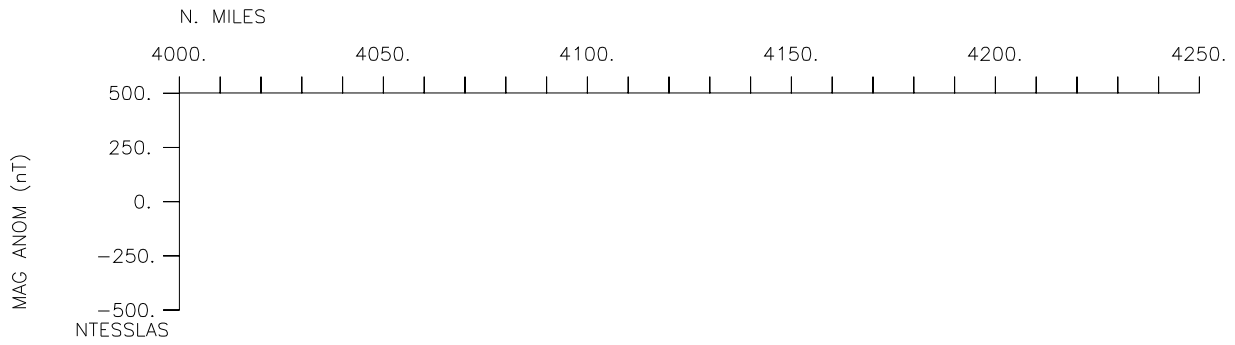
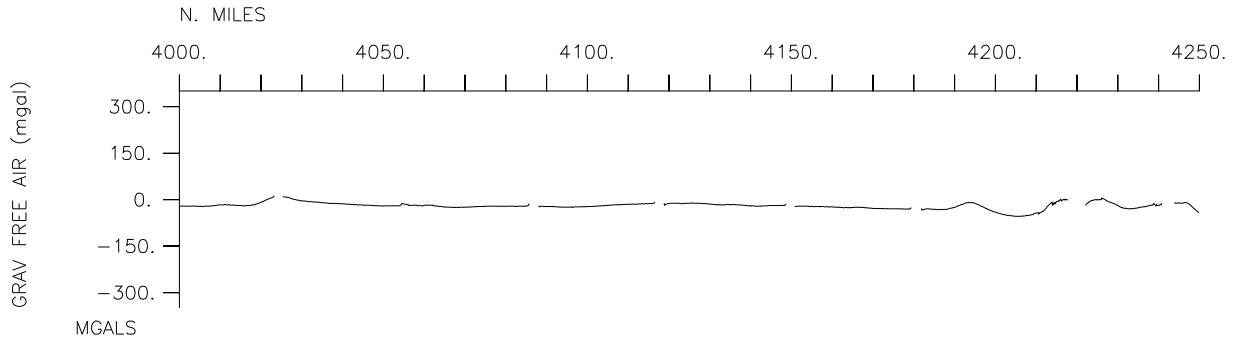


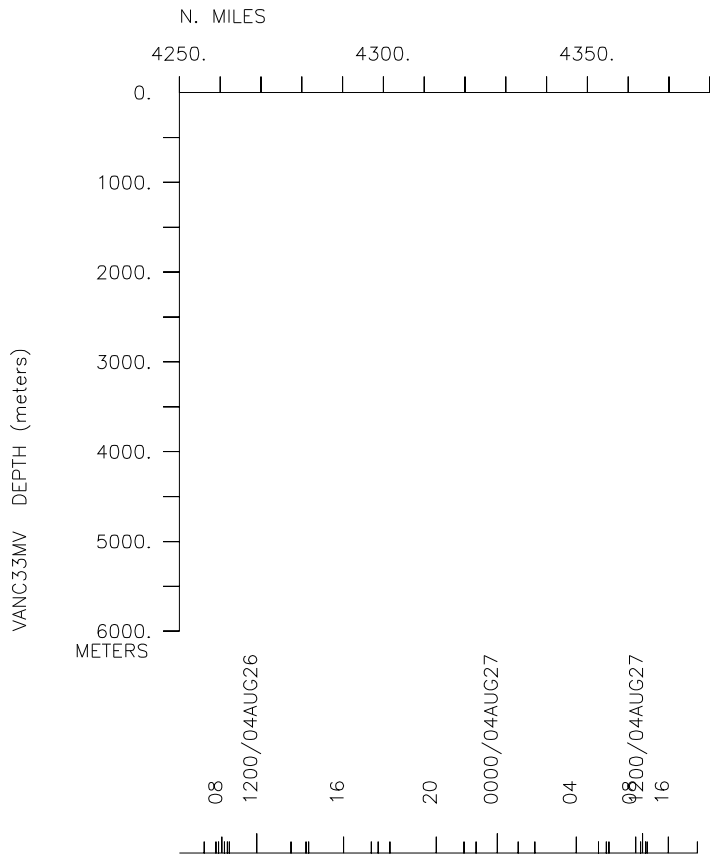
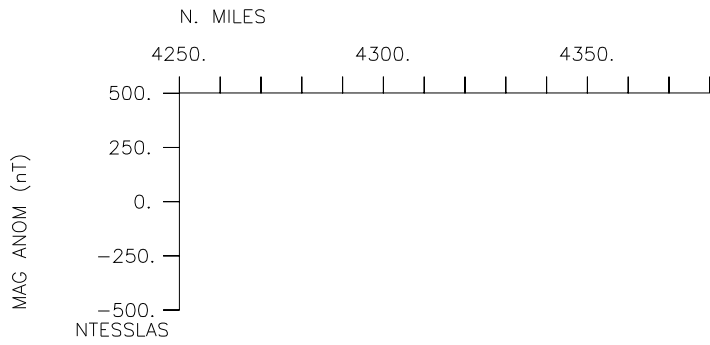
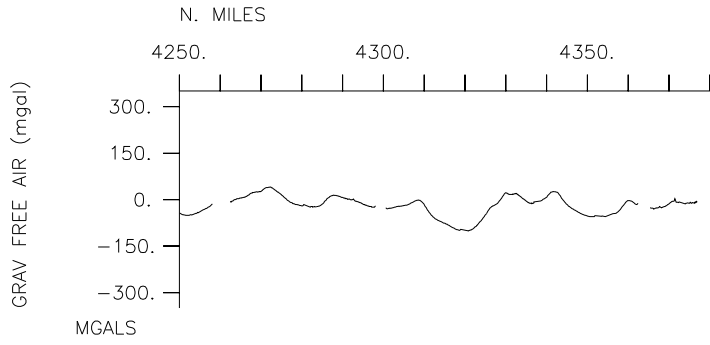












**** Ports ***

0159	290704	LGPT B Honolulu, Hawaii	21-18.00N	157-58.00W	f	VANC33MV
1740	270804	LGPT E San Diego, Calif	33-43.00N	117-14.00W	f	VANC33MV

**** *****NAME***** *****TITLE***** *****AFFILIATION***** **CRID**
 #--- ---- -

PECS	SIO	Swift, James	Chief Scientist	Scripps Institution		VANC33MV
PESP	SIO	Afghan, Justine	Scientist	Scripps Institution		VANC33MV
PESP	SIX	Dong-Ha, Min	Scientist	Penn State		VANC33MV
PESP	NOAA	Peltola, Esa	Scientist	NOAA/AOML		VANC33MV
PESP	STS	Becker, Susan	Technician	Scripps Institution		VANC33MV
PESP	SIO	Becker-Brungard, H.	Technician	Scripps Institution		VANC33MV
PESP	HIG	Brown, Matthew	Technician	Univ. of Hawaii		VANC33MV
PESP	SIX	Brown, Stacey	Technician	Univ. of Miami		VANC33MV
PESP	SIX	Buck, Cliff	Technician	Florida State Univ		VANC33MV
PESP	STS	Calderwood, John	Technician	Scripps Institution		VANC33MV
PEST	SIO	Chavez, Gabriela	Grad student	Scripps Institution		VANC33MV
PESP	SIO	Cohen, Ben	Technician	Scripps Institution		VANC33MV
PESP	SIO	Cole, Sylvia	Technician	Scripps Institution		VANC33MV
PERT	STS	Colt, Cambria	Resident tech	Scripps Institution		VANC33MV
PEST	LDEO	Coon, Ethan	Grad student	Lamont Doherty		VANC33MV
PESP	STS	Delahoyde, Frank	Computer tech	Scripps Institution		VANC33MV
PESP	WHOI	Fleer, Alan	Technician	Woods Hole		VANC33MV
PEST	SIO	Frants, Maria	Grad student	Scripps Institution		VANC33MV
PESP	LDEO	Gorman, Eugene	Technician	Lamont Doherty		VANC33MV
PESP	SIX	Hansard, Paul	Technician	Florida State Univ		VANC33MV
PESP	SIO	Hernandez, Martin	Technician	Scripps Institution		VANC33MV
PESP	STS	Hiller, Scott	Technician	Scripps Institution		VANC33MV
PESP	STS	Jacobson, Dan	Computer tech	Scripps Institution		VANC33MV
PESP	STS	Johnson, Mary	Technician	Scripps Institution		VANC33MV
PESP	SIX	Landing, Bill	Technician	Florida State Univ		VANC33MV
PESP	LDEO	Loose, Brice	Technician	Lamont Doherty		VANC33MV
PESP	SIX	Swift, Michele	Technician	SSU		VANC33MV
PESP	SIO	Wang, Ted	Technician	Scripps Institution		VANC33MV
PESP	NOAA	Wisegarver, David	Technician	NOAA		VANC33MV
PEST	HIG	Yen, John	Grad student	Univ. of Hawaii		VANC33MV

**** NOTES ***

#An 'X' in the (B)egin/(E)nd column following the sample code indicates no
 #sample or data recovered. A 'C' indicates continuation of data collection
 #from before the beginning or after the end of a particular leg, (moored
 #bottom instruments, for example.) The number appearing in the columns
 #between the sample identifier and the disposition code, for many sample
 #entries, is the water depth in corrected meters.

#GMT	DDMMYY	SAMP	B	SAMPLE	DISP		p	CRUISE
#TIME	DATE	TZ	CODE	E IDENTIFIER	CODE	LATITUDE	LONGITUDE	c LEG-SHIP
#	-----	---	---	-----	-----	-----	-----	-----

**** Underway Data Curator - Shipboard Technical Support Group ext.41899 ***
 **** Digital Data Curator - Geological Data Center, S.P. Miller, ext.41898 ***

**** MultiBeam Data (vertical beam and side scan)

0349	290704	0	MBSR	B	v.beamw/sidescan	GDC	21-14.82N	158-01.90W	g	VANC33MV
1604	250804	0	MBSR	E	v.beamw/sidescan	GDC	32-03.20N	119-39.62W	g	VANC33MV

#GMT	DDMMYY	SAMP	B	SAMPLE	DISP				p	CRUISE
#TIME	DATE	TZ	CODE	E IDENTIFIER	CODE	LATITUDE	LONGITUDE		c	LEG-SHIP
#-----	--	---	-	-----	----	-----	-----	-----	-	-----
*** Digital Gravity ***										
0410	290704	0	GVDD	B Digital Gravity	GDC	21-14.82N	158-06.70W	g		VANC33MV
1735	270804	0	GVDDDE	Digital Gravity	GDC	32-42.40N	117-14.18W	g		VANC33MV
*** Integrated Meteorological Acquisition System ***										
0159	270704	0	IMET	B weather measurements	GDC	21-18.68N	157-52.45W	g		VANC33MV
1740	250804	0	IMET	E weather measurements	GDC	32-02.50N	119-41.33W	g		VANC33MV
*** Conductivity, Temperature, Depth ***										
2307	300704	0	TDCT	CTD test cast deploy	ODF	27-53.40N	164-20.46W	g		VANC33MV
2316	300704	0	TDCT	Test CTD @ 100m	ODF	27-53.40N	164-20.42W	g		VANC33MV
2324	300704	0	TDCT	CTD test cast on dec	ODF	27-53.41N	164-20.38W	g		VANC33MV
2324	300704	0	TDCT	CTD test cast #2 dep	ODF	27-53.41N	164-20.38W	g		VANC33MV
2342	300704	0	TDCT	Test CTD #2 @ 100m	ODF	27-53.45N	164-20.28W	g		VANC33MV
0000	310704	0	TDCT	CTD test cast #2 on	ODF	27-53.46N	164-20.21W	g		VANC33MV
1419	310704	0	TDCT	CTD #109 deployed	ODF	30-00.10N	166-26.82W	g		VANC33MV
1605	310704	0	TDCT	CTD #109 @ 5620m	ODF	30-00.09N	166-26.60W	g		VANC33MV
1838	310704	0	TDCT	CTD #109 on deck	ODF	30-00.22N	166-26.71W	g		VANC33MV
2245	310704	0	TDCT	CTD #110 deployed	ODF	30-00.06N	165-47.13W	g		VANC33MV
0033	010804	0	TDCT	CTD #110 @ 5598m	ODF	29-59.94N	165-47.28W	g		VANC33MV
0317	010804	0	TDCT	CTD #110 on deck	ODF	29-59.99N	165-46.65W	g		VANC33MV
0722	010804	0	TDCT	CTD #111 deployed	ODF	29-59.75N	165-07.17W	g		VANC33MV
0858	010804	0	TDCT	CTD #111 @ 5385m	ODF	29-59.68N	165-07.01W	g		VANC33MV
1126	010804	0	TDCT	CTD #111 on deck	ODF	29-59.41N	165-07.58W	g		VANC33MV
1446	010804	0	TDCT	CTD #112 deployed	ODF	30-00.00N	164-33.01W	g		VANC33MV
1628	010804	0	TDCT	CTD #112 @ 5630m	ODF	30-00.05N	164-33.12W	g		VANC33MV
1903	010804	0	TDCT	CTD #112 on deck	ODF	30-00.16N	164-33.00W	g		VANC33MV
2326	010804	0	TDCT	CTD #113 deployed	ODF	29-59.73N	163-50.59W	g		VANC33MV
0110	020804	0	TDCT	CTD #113 @ 5634m	ODF	29-59.83N	163-50.76W	g		VANC33MV
0338	020804	0	TDCT	CTD #113 on deck	ODF	29-59.86N	163-50.43W	g		VANC33MV
0646	020804	0	TDCT	CTD #114 deployed	ODF	29-59.97N	163-10.01W	g		VANC33MV
0827	020804	0	TDCT	CTD #114 @ 5670m	ODF	29-59.75N	163-09.97W	g		VANC33MV
1057	020804	0	TDCT	CTD #114 on deck	ODF	29-59.77N	163-10.36W	g		VANC33MV
1440	020804	0	TDCT	CTD #115 deployed	ODF	30-00.02N	162-28.35W	g		VANC33MV
1621	020804	0	TDCT	CTD #115 @ 5675m	ODF	30-00.02N	162-28.55W	g		VANC33MV
1850	020804	0	TDCT	CTD #115 on deck	ODF	30-00.08N	162-28.29W	g		VANC33MV
2330	020804	0	TDCT	CTD #116 deployed	ODF	30-00.01N	161-46.72W	g		VANC33MV
0115	030804	0	TDCT	CTD #116 @ 5785m	ODF	29-59.91N	161-46.61W	g		VANC33MV
0413	030804	0	TDCT	CTD #116 on deck	ODF	30-00.57N	161-46.84W	g		VANC33MV
0843	030804	0	TDCT	CTD #117 deployed	ODF	29-59.91N	161-05.01W	g		VANC33MV
1025	030804	0	TDCT	CTD #117 @ 5450m	ODF	29-59.94N	161-04.99W	g		VANC33MV
1303	030804	0	TDCT	CTD #117 on deck	ODF	29-59.65N	161-04.96W	g		VANC33MV
1642	030804	0	TDCT	CTD #118 deployed	ODF	29-59.97N	160-23.64W	g		VANC33MV
1826	030804	0	TDCT	CTD #118 @ 5780m	ODF	30-00.02N	160-23.65W	g		VANC33MV
2054	030804	0	TDCT	CTD #118 on deck	ODF	30-00.02N	160-23.65W	g		VANC33MV
0134	040804	0	TDCT	CTD #119 deployed	ODF	30-00.10N	159-42.01W	g		VANC33MV
0316	040804	0	TDCT	CTD #119 @ 5760m	ODF	30-00.18N	159-42.09W	g		VANC33MV
0543	040804	0	TDCT	CTD #119 on deck	ODF	29-59.84N	159-42.02W	g		VANC33MV
0950	070804	0	TDCT	CTD #120 deployed	ODF	30-00.00N	159-00.39W	g		VANC33MV
1134	070804	0	TDCT	CTD #120 @ 5760m	ODF	29-59.99N	159-00.68W	g		VANC33MV
1415	070804	0	TDCT	CTD #120 on deck	ODF	29-59.92N	159-01.05W	g		VANC33MV
1748	070804	0	TDCT	CTD #121 deployed	ODF	30-00.07N	158-19.01W	g		VANC33MV
1931	070804	0	TDCT	CTD #121 @ 5825m	ODF	30-00.04N	158-18.89W	g		VANC33MV
2202	070804	0	TDCT	CTD #121 on deck	ODF	29-59.95N	158-18.62W	g		VANC33MV

#GMT	DDMMYY	SAMP	B	SAMPLE	DISP				p	CRUISE
#TIME	DATE	TZ	CODE	E IDENTIFIER	CODE	LATITUDE	LONGITUDE		c	LEG-SHIP
#-----	---	---	---	-----	---	-----	-----	---	---	-----
0216	080804	0	TDCT	CTD #122 deployed	ODF	30-00.01N	157-37.14W	g		VANC33MV
0400	080804	0	TDCT	CTD #122 @ 5825m	ODF	29-59.93N	157-37.05W	g		VANC33MV
0625	080804	0	TDCT	CTD #122 on deck	ODF	30-00.00N	157-36.97W	g		VANC33MV
0936	080804	0	TDCT	CTD #123 deployed	ODF	30-00.03N	156-55.64W	g		VANC33MV
1124	080804	0	TDCT	CTD #123 @ 5870m	ODF	29-59.91N	156-55.47W	g		VANC33MV
1404	080804	0	TDCT	CTD #123 on deck	ODF	29-59.68N	156-55.32W	g		VANC33MV
1849	080804	0	TDCT	CTD #124 deployed	ODF	30-00.03N	156-14.13W	g		VANC33MV
2036	080804	0	TDCT	CTD #124 @ 5945m	ODF	30-00.03N	156-13.96W	g		VANC33MV
2308	080804	0	TDCT	CTD #124 on deck	ODF	30-00.21N	156-13.80W	g		VANC33MV
0358	090804	0	TDCT	CTD #125 deployed	ODF	30-00.08N	155-31.67W	g		VANC33MV
0542	090804	0	TDCT	CTD #125 @ 5780m	ODF	29-59.53N	155-31.37W	g		VANC33MV
0756	090804	0	TDCT	CTD #125 on deck	ODF	29-58.90N	155-32.01W	g		VANC33MV
1146	090804	0	TDCT	CTD #126 deployed	ODF	30-00.02N	154-50.76W	g		VANC33MV
1328	090804	0	TDCT	CTD #126 @5535m	ODF	29-59.90N	154-50.67W	g		VANC33MV
1557	090804	0	TDCT	CTD #126 on deck	ODF	30-00.11N	154-50.62W	g		VANC33MV
2033	090804	0	TDCT	CTD #127 deployed	ODF	30-00.06N	154-08.62W	g		VANC33MV
2212	090804	0	TDCT	CTD #127 @ 5515m	ODF	30-00.01N	154-08.58W	g		VANC33MV
0022	100804	0	TDCT	CTD #127 on deck	ODF	30-00.05N	154-08.65W	g		VANC33MV
0335	100804	0	TDCT	CTD #127-2 deployed	ODF	30-00.07N	154-09.24W	g		VANC33MV
0401	100804	0	TDCT	CTD #127-2 @ 1100m	ODF	30-00.03N	154-09.10W	g		VANC33MV
0444	100804	0	TDCT	CTD #127-2 on deck	ODF	29-59.90N	154-08.91W	g		VANC33MV
0801	100804	0	TDCT	CTD #128 deployed	ODF	29-59.98N	153-24.30W	g		VANC33MV
0936	100804	0	TDCT	CTD #128 @ 5335m	ODF	29-59.75N	153-24.12W	g		VANC33MV
1207	100804	0	TDCT	CTD #128 on deck	ODF	29-59.80N	153-24.45W	g		VANC33MV
1532	100804	0	TDCT	CTD #129 deployed	ODF	29-59.98N	152-39.03W	g		VANC33MV
1706	100804	0	TDCT	CTD #129 @ 5365m	ODF	30-00.09N	152-39.18W	g		VANC33MV
1925	100804	0	TDCT	CTD #129 on deck	ODF	29-59.98N	152-38.99W	g		VANC33MV
2347	100804	0	TDCT	CTD #130 deployed	ODF	30-00.00N	151-54.13W	g		VANC33MV
0126	110804	0	TDCT	CTD #130 @ 5483m	ODF	30-00.08N	151-53.90W	g		VANC33MV
0347	110804	0	TDCT	CTD #130 on deck	ODF	29-59.85N	151-53.69W	g		VANC33MV
0810	110804	0	TDCT	CTD #131 deployed	ODF	29-59.90N	151-09.24W	g		VANC33MV
0951	110804	0	TDCT	CTD #131 @ 5695m	ODF	29-59.66N	151-09.46W	g		VANC33MV
1227	110804	0	TDCT	CTD #131 on deck	ODF	29-59.72N	151-09.68W	g		VANC33MV
1557	110804	0	TDCT	CTD #132 deployed	ODF	29-59.98N	150-23.95W	g		VANC33MV
1746	110804	0	TDCT	CTD #132 @ 6050m	ODF	29-59.95N	150-24.02W	g		VANC33MV
2017	110804	0	TDCT	CTD #132 on deck	ODF	30-00.01N	150-23.99W	g		VANC33MV
0046	120804	0	TDCT	CTD #133 deployed	ODF	30-00.10N	149-39.49W	g		VANC33MV
0230	120804	0	TDCT	CTD #133 @ 5745m	ODF	29-59.96N	149-39.33W	g		VANC33MV
0453	120804	0	TDCT	CTD #133 on deck	ODF	30-00.11N	149-38.95W	g		VANC33MV
0820	120804	0	TDCT	CTD #134 deployed	ODF	29-59.99N	148-54.16W	g		VANC33MV
0947	120804	0	TDCT	CTD #134 @ 4900m	ODF	29-59.85N	148-53.86W	g		VANC33MV
1210	120804	0	TDCT	CTD #134 on deck	ODF	29-59.63N	148-54.00W	g		VANC33MV
1539	120804	0	TDCT	CTD #135 deployed	ODF	30-00.04N	148-08.90W	g		VANC33MV
1706	120804	0	TDCT	CTD #135 @4955m	ODF	29-59.93N	148-09.07W	g		VANC33MV
1916	120804	0	TDCT	CTD #135 on deck	ODF	30-00.03N	148-08.96W	g		VANC33MV
2339	120804	0	TDCT	CTD #136 deployed	ODF	30-00.02N	147-23.82W	g		VANC33MV
0107	130804	0	TDCT	CTD #136 @ 4800m	ODF	29-59.98N	147-23.94W	g		VANC33MV
0311	130804	0	TDCT	CTD #136 on deck	ODF	29-59.87N	147-23.81W	g		VANC33MV
0731	130804	0	TDCT	CTD #137 deployed	ODF	29-59.78N	146-39.02W	g		VANC33MV
0859	130804	0	TDCT	CTD #137 @ 5030m	ODF	29-59.91N	146-38.86W	g		VANC33MV
1126	130804	0	TDCT	CTD #137 on deck	ODF	29-59.95N	146-39.26W	g		VANC33MV
1456	130804	0	TDCT	CTD #138 deployed	ODF	30-00.01N	145-53.87W	g		VANC33MV
1627	130804	0	TDCT	CTD #138 @ 5130m	ODF	30-00.00N	145-53.81W	g		VANC33MV
1842	130804	0	TDCT	CTD #138 on deck	ODF	29-59.99N	145-53.70W	g		VANC33MV
2254	130804	0	TDCT	CTD #139 deployed	ODF	29-59.97N	145-08.49W	g		VANC33MV
0029	140804	0	TDCT	CTD #139 @ 5265m	ODF	29-59.89N	145-08.35W	g		VANC33MV
0243	140804	0	TDCT	CTD #139 on deck	ODF	29-59.73N	145-08.49W	g		VANC33MV
0607	140804	0	TDCT	CTD #140 deployed	ODF	30-00.02N	144-23.88W	g		VANC33MV

#GMT	DDMMYY	SAMP	B	SAMPLE	DISP				p	CRUISE
#TIME	DATE	TZ	CODE	E IDENTIFIER	CODE	LATITUDE	LONGITUDE		c	LEG-SHIP
#-----	----	--	----	-----	----	-----	-----	-----	-	-----
0739	140804	0	TDCT	CTD #140 @ 5230m	ODF	29-59.93N	144-23.76W		g	VANC33MV
0953	140804	0	TDCT	CTD #140 on deck	ODF	30-00.17N	144-23.98W		g	VANC33MV
1310	140804	0	TDCT	CTD #141 deployed	ODF	30-00.00N	143-38.73W		g	VANC33MV
1444	140804	0	TDCT	CTD #141 @ 5200m	ODF	29-59.96N	143-38.64W		g	VANC33MV
1703	140804	0	TDCT	CTD #141 on deck	ODF	30-00.07N	143-38.68W		g	VANC33MV
2130	140804	0	TDCT	CTD #142 deployed	ODF	29-59.99N	142-53.76W		g	VANC33MV
2300	140804	0	TDCT	CTD #142 @ 5020m	ODF	29-59.89N	142-53.36W		g	VANC33MV
0102	150804	0	TDCT	CTD #142 on deck	ODF	29-59.81N	142-53.35W		g	VANC33MV
0522	150804	0	TDCT	CTD #143 deployed	ODF	30-00.01N	142-08.42W		g	VANC33MV
0649	150804	0	TDCT	CTD #143 @ 4935m	ODF	29-59.99N	142-08.52W		g	VANC33MV
0845	150804	0	TDCT	CTD #143 on deck	ODF	30-00.00N	142-08.56W		g	VANC33MV
1206	150804	0	TDCT	CTD #144 deployed	ODF	30-00.05N	141-23.74W		g	VANC33MV
1332	150804	0	TDCT	CTD #144 @ 4820m	ODF	30-00.01N	141-23.43W		g	VANC33MV
1550	150804	0	TDCT	CTD #144 on deck	ODF	30-00.01N	141-23.55W		g	VANC33MV
2009	150804	0	TDCT	CTD #145 deployed	ODF	29-59.94N	140-38.34W		g	VANC33MV
2137	150804	0	TDCT	CTD #145 @ 4795m	ODF	29-59.92N	140-38.46W		g	VANC33MV
2340	150804	0	TDCT	CTD #145 on deck	ODF	29-59.91N	140-38.80W		g	VANC33MV
0309	160804	0	TDCT	CTD #146 deployed	ODF	30-00.03N	139-53.37W		g	VANC33MV
0431	160804	0	TDCT	CTD #146 @ 4540m	ODF	30-00.04N	139-53.43W		g	VANC33MV
0626	160804	0	TDCT	CTD #146 on deck	ODF	30-00.00N	139-53.44W		g	VANC33MV
0946	160804	0	TDCT	CTD #147 deployed	ODF	30-00.10N	139-08.60W		g	VANC33MV
1113	160804	0	TDCT	CTD #147 @ 4865m	ODF	30-00.03N	139-08.53W		g	VANC33MV
1331	160804	0	TDCT	CTD #147 on deck	ODF	30-00.16N	139-08.23W		g	VANC33MV
1745	160804	0	TDCT	CTD #148 deployed	ODF	30-00.06N	138-23.55W		g	VANC33MV
1910	160804	0	TDCT	CTD #148 @ 4710m	ODF	29-59.98N	138-23.49W		g	VANC33MV
2108	160804	0	TDCT	CTD #148 on deck	ODF	30-00.13N	138-23.32W		g	VANC33MV
0121	170804	0	TDCT	CTD #149 deployed	ODF	29-59.85N	137-38.23W		g	VANC33MV
0239	170804	0	TDCT	CTD #149 @ 4275m	ODF	29-59.75N	137-38.35W		g	VANC33MV
0446	170804	0	TDCT	CTD #149 on deck	ODF	29-59.91N	137-38.68W		g	VANC33MV
0808	170804	0	TDCT	CTD #150 deployed	ODF	30-00.00N	136-53.59W		g	VANC33MV
0917	170804	0	TDCT	CTD #150 @ 3715m	ODF	29-59.97N	136-53.50W		g	VANC33MV
1118	170804	0	TDCT	CTD #150 on deck	ODF	29-59.84N	136-53.27W		g	VANC33MV
1440	170804	0	TDCT	CTD #151 deployed	ODF	30-00.03N	136-08.28W		g	VANC33MV
1600	170804	0	TDCT	CTD #151 @ 4525m	ODF	29-59.99N	136-08.32W		g	VANC33MV
1759	170804	0	TDCT	CTD #151 on deck	ODF	30-00.01N	136-08.26W		g	VANC33MV
2206	170804	0	TDCT	CTD #152 deployed	ODF	29-59.97N	135-25.88W		g	VANC33MV
2328	170804	0	TDCT	CTD #152 @ 4450m	ODF	30-00.07N	135-25.72W		g	VANC33MV
0129	180804	0	TDCT	CTD #152 on deck	ODF	29-59.95N	135-25.66W		g	VANC33MV
0531	180804	0	TDCT	CTD #153 deployed	ODF	29-59.92N	134-44.39W		g	VANC33MV
0651	180804	0	TDCT	CTD #153 @ 4524m	ODF	30-00.00N	134-44.28W		g	VANC33MV
0853	180804	0	TDCT	CTD #153 on deck	ODF	30-00.24N	134-43.95W		g	VANC33MV
1137	180804	0	TDCT	CTD #154 deployed	ODF	30-00.04N	134-09.68W		g	VANC33MV
1300	180804	0	TDCT	CTD #154 @ 4630m	ODF	29-59.90N	134-09.63W		g	VANC33MV
1514	180804	0	TDCT	CTD #154 on deck	ODF	30-00.02N	134-09.58W		g	VANC33MV
1751	180804	0	TDCT	CTD #155 deployed	ODF	29-59.98N	133-35.07W		g	VANC33MV
1917	180804	0	TDCT	CTD #155 @ 4710m	ODF	30-00.00N	133-35.01W		g	VANC33MV
2118	180804	0	TDCT	CTD #155 on deck	ODF	29-59.74N	133-34.94W		g	VANC33MV
0046	190804	0	TDCT	CTD #156 deployed	ODF	29-59.98N	133-00.37W		g	VANC33MV
0209	190804	0	TDCT	CTD #156 @ 4608m	ODF	29-59.93N	133-00.42W		g	VANC33MV
0408	190804	0	TDCT	CTD #156 on deck	ODF	30-00.10N	133-00.48W		g	VANC33MV
0743	190804	0	TDCT	CTD #157 deployed	ODF	30-00.02N	132-25.79W		g	VANC33MV
0906	190804	0	TDCT	CTD #157 @ 4610m	ODF	30-00.14N	132-25.59W		g	VANC33MV
1124	190804	0	TDCT	CTD #157 on deck	ODF	29-59.87N	132-25.45W		g	VANC33MV
1400	190804	0	TDCT	CTD #158 deployed	ODF	30-00.00N	131-51.12W		g	VANC33MV
1520	190804	0	TDCT	CTD #158 @ 4525m	ODF	30-00.00N	131-51.09W		g	VANC33MV
1721	190804	0	TDCT	CTD #158 on deck	ODF	29-59.97N	131-51.02W		g	VANC33MV
1958	190804	0	TDCT	CTD #159 deployed	ODF	30-00.00N	131-16.58W		g	VANC33MV
2131	190804	0	TDCT	CTD #159 @ 5150m	ODF	29-59.98N	131-16.52W		g	VANC33MV
2333	190804	0	TDCT	CTD #159 on deck	ODF	30-00.16N	131-16.49W		g	VANC33MV

#GMT	DDMMYY	SAMP	B	SAMPLE	DISP				p	CRUISE
#TIME	DATE	TZ	CODE	E IDENTIFIER	CODE	LATITUDE	LONGITUDE		c	LEG-SHIP
#-----	---	---	---	-----	---	-----	-----	---	---	-----
0313	200804	0	TDCT	CTD #160 deployed	ODF	29-59.98N	130-41.34W	g		VANC33MV
0436	200804	0	TDCT	CTD #160 @ 4675m	ODF	30-00.00N	130-41.40W	g		VANC33MV
0628	200804	0	TDCT	CTD #160 on deck	ODF	29-59.92N	130-41.49W	g		VANC33MV
1017	200804	0	TDCT	CTD #161 deployed	ODF	29-59.84N	130-06.72W	g		VANC33MV
1141	200804	0	TDCT	CTD #161 @ 4710m	ODF	30-00.03N	130-06.82W	g		VANC33MV
1354	200804	0	TDCT	CTD #161 on deck	ODF	29-59.84N	130-06.61W	g		VANC33MV
1646	200804	0	TDCT	CTD #162 deployed	ODF	30-00.00N	129-32.17W	g		VANC33MV
1811	200804	0	TDCT	CTD #162 @ 4780m	ODF	30-00.00N	129-32.15W	g		VANC33MV
2012	200804	0	TDCT	CTD #162 on deck	ODF	29-59.69N	129-32.25W	g		VANC33MV
2355	200804	0	TDCT	CTD #163 deployed	ODF	30-00.03N	128-57.59W	g		VANC33MV
0115	210804	0	TDCT	CTD #163 @ 4464m	ODF	29-59.98N	128-57.76W	g		VANC33MV
0315	210804	0	TDCT	CTD #163 on deck	ODF	30-00.10N	128-57.75W	g		VANC33MV
0605	210804	0	TDCT	CTD #164 deployed	ODF	29-59.99N	128-22.86W	g		VANC33MV
0726	210804	0	TDCT	CTD #164 @ 4570m	ODF	30-00.02N	128-22.92W	g		VANC33MV
0938	210804	0	TDCT	CTD #164 on deck	ODF	29-59.67N	128-22.86W	g		VANC33MV
1218	210804	0	TDCT	CTD #165 deployed	ODF	29-59.96N	127-48.13W	g		VANC33MV
1340	210804	0	TDCT	CTD #165 @ 4582m	ODF	29-59.91N	127-48.20W	g		VANC33MV
1550	210804	0	TDCT	CTD #165 on deck	ODF	30-00.06N	127-48.18W	g		VANC33MV
1921	210804	0	TDCT	CTD #166 deployed	ODF	29-59.99N	127-13.67W	g		VANC33MV
2141	210804	0	TDCT	CTD #166 @ 4415m	ODF	30-00.08N	127-13.66W	g		VANC33MV
2232	210804	0	TDCT	CTD #166 on deck	ODF	30-00.04N	127-13.62W	g		VANC33MV
0108	220804	0	TDCT	CTD #167 deployed	ODF	29-59.97N	126-39.01W	g		VANC33MV
0226	220804	0	TDCT	CTD #167 @ 4300m	ODF	29-59.62N	126-39.02W	g		VANC33MV
0415	220804	0	TDCT	CTD #167 on deck	ODF	29-59.82N	126-39.24W	g		VANC33MV
0800	220804	0	TDCT	CTD #168 deployed	ODF	29-59.94N	126-04.34W	g		VANC33MV
0919	220804	0	TDCT	CTD #168 # 4300m	ODF	30-00.03N	126-04.40W	g		VANC33MV
1129	220804	0	TDCT	CTD #168 on deck	ODF	30-00.09N	126-04.32W	g		VANC33MV
1410	220804	0	TDCT	CTD #169 deployed	ODF	29-59.98N	125-29.60W	g		VANC33MV
1532	220804	0	TDCT	CTD #169 @ 4530m	ODF	30-00.05N	125-29.63W	g		VANC33MV
1733	220804	0	TDCT	CTD #169 on deck	ODF	30-00.02N	125-29.62W	g		VANC33MV
2107	220804	0	TDCT	CTD #170 deployed	ODF	30-00.01N	124-55.22W	g		VANC33MV
2225	220804	0	TDCT	CTD #170 @ 4245m	ODF	30-00.04N	124-55.10W	g		VANC33MV
0017	230804	0	TDCT	CTD #170 on deck	ODF	29-59.93N	124-55.01W	g		VANC33MV
0352	230804	0	TDCT	CTD #171 deployed	ODF	30-00.01N	124-20.41W	g		VANC33MV
0513	230804	0	TDCT	CTD #171 @ 4550m	ODF	30-00.01N	124-20.39W	g		VANC33MV
0703	230804	0	TDCT	CTD #171 on deck	ODF	30-00.20N	124-20.34W	g		VANC33MV
0945	230804	0	TDCT	CTD #172 deployed	ODF	30-00.04N	123-45.76W	g		VANC33MV
1105	230804	0	TDCT	CTD #172 @ 4420m	ODF	30-00.07N	123-45.64W	g		VANC33MV
1320	230804	0	TDCT	CTD #172 on deck	ODF	30-00.00N	123-45.58W	g		VANC33MV
1555	230804	0	TDCT	CTD #173 deployed	ODF	30-15.55N	123-16.14W	g		VANC33MV
1711	230804	0	TDCT	CTD #173 @ 4275m	ODF	30-15.59N	123-16.10W	g		VANC33MV
1903	230804	0	TDCT	CTD #173 on deck	ODF	30-15.44N	123-15.98W	g		VANC33MV
2229	230804	0	TDCT	CTD #174 deployed	ODF	30-30.74N	122-46.83W	g		VANC33MV
2326	230804	0	TDCT	CTD #174 @ 2826m	ODF	30-30.69N	122-46.89W	g		VANC33MV
0055	240804	0	TDCT	CTD #174 on deck	ODF	30-30.74N	122-46.89W	g		VANC33MV
0432	240804	0	TDCT	CTD #175 deployed	ODF	30-46.40N	122-16.41W	g		VANC33MV
0547	240804	0	TDCT	CTD #175 @ 4155m	ODF	30-46.42N	122-16.35W	g		VANC33MV
0737	240804	0	TDCT	CTD #175 on deck	ODF	30-46.19N	122-16.32W	g		VANC33MV
1023	240804	0	TDCT	CTD #176 deployed	ODF	31-01.70N	121-46.26W	g		VANC33MV
1133	240804	0	TDCT	CTD #176 @ 3980m	ODF	31-01.60N	121-46.31W	g		VANC33MV
1334	240804	0	TDCT	CTD #176 on deck	ODF	31-01.64N	121-46.19W	g		VANC33MV
1608	240804	0	TDCT	CTD #177 deployed	ODF	31-16.73N	121-16.02W	g		VANC33MV
1719	240804	0	TDCT	CTD #177 @ 3870m	ODF	31-16.75N	121-15.98W	g		VANC33MV
1903	240804	0	TDCT	CTD #177 deployed	ODF	31-16.60N	121-16.04W	g		VANC33MV
2249	240804	0	TDCT	CTD #178 deployed	ODF	31-31.87N	120-45.53W	g		VANC33MV
2359	240804	0	TDCT	CTD #178 @ 3925m	ODF	31-31.78N	120-45.32W	g		VANC33MV

#GMT	DDMMYY	SAMP	B	SAMPLE	DISP				p	CRUISE
#TIME	DATE	TZ	CODE	E IDENTIFIER	CODE	LATITUDE	LONGITUDE		c	LEG-SHIP
#-----	---	---	---	-----	---	-----	-----	---	---	-----
0153	250804	0	TDCT	CTD #178 on deck	ODF	31-31.77N	120-45.48W	g		VANC33MV
0530	250804	0	TDCT	CTD #179 deployed	ODF	31-46.73N	120-15.00W	g		VANC33MV
0641	250804	0	TDCT	CTD #179 @ 4030m	ODF	31-46.67N	120-14.96W	g		VANC33MV
0839	250804	0	TDCT	CTD #179 on deck	ODF	31-46.21N	120-15.07W	g		VANC33MV
1110	250804	0	TDCT	CTD #180 deployed	ODF	32-00.01N	119-46.20W	g		VANC33MV
1213	250804	0	TDCT	CTD #180 @ 3165m	ODF	32-00.01N	119-46.20W	g		VANC33MV
1359	250804	0	TDCT	CTD #180 on deck	ODF	32-00.01N	119-46.20W	g		VANC33MV
1803	250804	0	TDCT	CTD #181 deployed	ODF	32-02.24N	119-41.81W	g		VANC33MV
1851	250804	0	TDCT	CTD #181 @ 2200m	ODF	32-01.71N	119-42.81W	g		VANC33MV
2006	250804	0	TDCT	CTD #181 on deck	ODF	32-01.44N	119-43.32W	g		VANC33MV
2203	250804	0	TDCT	CTD #182 deployed	ODF	32-03.46N	119-38.98W	g		VANC33MV
2236	250804	0	TDCT	CTD #182 @ 1620m	ODF	32-03.46N	119-38.98W	g		VANC33MV
2337	250804	0	TDCT	CTD #182 on deck	ODF	32-03.47N	119-38.98W	g		VANC33MV
0212	260804	0	TDCT	CTD #183 deployed	ODF	32-10.60N	119-25.40W	g		VANC33MV
0248	260804	0	TDCT	CTD #183 @ 1615m	ODF	32-10.62N	119-25.30W	g		VANC33MV
0345	260804	0	TDCT	CTD #183 on deck	ODF	32-10.61N	119-25.31W	g		VANC33MV
0937	260804	0	TDCT	CTD #184 deployed	ODF	32-18.36N	119-08.85W	g		VANC33MV
1002	260804	0	TDCT	CTD #184 @ 1140m	ODF	32-18.53N	119-08.97W	g		VANC33MV
1055	260804	0	TDCT	CTD #184 on deck	ODF	32-18.67N	119-08.79W	g		VANC33MV
1331	260804	0	TDCT	CTD #185 deployed	ODF	32-28.00N	118-49.78W	g		VANC33MV
1400	260804	0	TDCT	CTD #185 @ 1320m	ODF	32-27.98N	118-49.86W	g		VANC33MV
1455	260804	0	TDCT	CTD #185 on deck	ODF	32-28.04N	118-49.81W	g		VANC33MV
1729	260804	0	TDCT	CTD #186 deployed	ODF	32-36.73N	118-32.55W	g		VANC33MV
1753	260804	0	TDCT	CTD #186 @ 1100m	ODF	32-36.73N	118-32.55W	g		VANC33MV
1835	260804	0	TDCT	CTD #186 on deck	ODF	32-36.72N	118-32.55W	g		VANC33MV
2045	260804	0	TDCT	CTD #187 deployed	ODF	32-37.92N	118-09.38W	g		VANC33MV
2125	260804	0	TDCT	CTD #187 @ 2045m	ODF	32-37.88N	118-09.27W	g		VANC33MV
2228	260804	0	TDCT	CTD #187 on deck	ODF	32-37.96N	118-09.29W	g		VANC33MV
0202	270804	0	TDCT	CTD #188 deployed	ODF	32-38.50N	117-49.36W	g		VANC33MV
0225	270804	0	TDCT	CTD #188 @ 720m	ODF	32-38.58N	117-49.44W	g		VANC33MV
0258	270804	0	TDCT	CTD #188 on deck	ODF	32-38.63N	117-49.43W	g		VANC33MV
0432	270804	0	TDCT	CTD #189 deployed	ODF	32-38.41N	117-31.55W	g		VANC33MV
0457	270804	0	TDCT	CTD #189 @ 1170m	ODF	32-38.27N	117-31.40W	g		VANC33MV
0539	270804	0	TDCT	CTD #189 on deck	ODF	32-37.92N	117-31.47W	g		VANC33MV
0606	270804	0	TDCT	CTD #189-2 deployed	ODF	32-38.42N	117-31.55W	g		VANC33MV
0630	270804	0	TDCT	CTD #189-2 @ 1175m	ODF	32-38.38N	117-31.82W	g		VANC33MV
0715	270804	0	TDCT	CTD #189-2 on deck	ODF	32-38.58N	117-31.99W	g		VANC33MV
0810	270804	0	TDCT	CTD #190 deployed	ODF	32-38.59N	117-23.04W	g		VANC33MV
0820	270804	0	TDCT	CTD #190 @ 235m	ODF	32-38.57N	117-23.03W	g		VANC33MV
0839	270804	0	TDCT	CTD #190 on deck JF	ODF	32-38.52N	117-23.04W	g		VANC33MV

*** Reference Temperature Instrument *** ??????

2235	300704	0	TDXX	TMR test cast deploy	ODF	27-53.37N	164-20.83W	g		VANC33MV
2243	300704	0	TDXX	TMR test cast on dec	ODF	27-53.38N	164-20.70W	g		VANC33MV
1841	310704	0	TDXX	TMR #109-2 deployed	ODF	30-00.23N	166-26.70W	g		VANC33MV
1936	310704	0	TDXX	TMR #109-2 on deck	ODF	30-00.31N	166-26.46W	g		VANC33MV
0617	010804	0	TDXX	TMR #111-1 deployed	ODF	29-59.95N	165-07.43W	g		VANC33MV
0715	010804	0	TDXX	TMR #111-1 on deck	ODF	29-59.77N	165-07.22W	g		VANC33MV
2222	010804	0	TDXX	TMR #113-1 deployed	ODF	30-00.01N	163-51.33W	g		VANC33MV
2317	010804	0	TDXX	TMR #113-1 on deck	ODF	29-59.76N	163-50.59W	g		VANC33MV
1853	020804	0	TDXX	TMR #115-2 deployed	ODF	30-00.10N	162-28.28W	g		VANC33MV
1955	020804	0	TDXX	TMR #115-2 on deck	ODF	30-00.08N	162-27.68W	g		VANC33MV

#GMT	DDMMYY	SAMP	B	SAMPLE	DISP				p	CRUISE
#TIME	DATE	TZ	CODE	E IDENTIFIER	CODE	LATITUDE	LONGITUDE		c	LEG-SHIP
#-----	---	---	---	-----	---	-----	-----	---	---	-----
0737	030804	0	TDXX	TMR #117-1	deployed	ODF	29-59.98N	161-05.51W	g	VANC33MV
0837	030804	0	TDXX	TMR #117-1	on deck	ODF	29-59.91N	161-04.98W	g	VANC33MV
0030	040804	0	TDXX	TMR #119-1	deployed	ODF	29-59.99N	159-42.38W	g	VANC33MV
0127	040804	0	TDXX	TMR #119-1	on deck	ODF	30-00.08N	159-42.08W	g	VANC33MV
2205	070804	0	TDXX	TMR #121-2	deployed	ODF	29-59.94N	158-18.61W	g	VANC33MV
2300	070804	0	TDXX	TMR #121-2	on deck	ODF	29-59.92N	158-18.65W	g	VANC33MV
1405	080804	0	TDXX	TMR #123-2	deployed	ODF	29-59.67N	156-55.32W	g	VANC33MV
1504	080804	0	TDXX	TMR #123-2	on deck	ODF	29-59.56N	156-55.15W	g	VANC33MV
0254	090804	0	TDXX	TMR #125-1	deployed	ODF	30-00.00N	155-32.42W	g	VANC33MV
0347	090804	0	TDXX	TMR #125-1	on deck	ODF	30-00.12N	155-31.80W	g	VANC33MV
1931	090804	0	TDXX	TMR #127-1	deployed	ODF	30-00.04N	154-09.29W	g	VANC33MV
2029	090804	0	TDXX	TMR #127-1	on deck	ODF	30-00.03N	154-08.63W	g	VANC33MV
1927	100804	0	TDXX	TMR #129-2	deployed	ODF	29-59.97N	152-38.99W	g	VANC33MV
2025	100804	0	TDXX	TMR #129-2	on deck	ODF	29-59.75N	152-39.23W	g	VANC33MV
0712	110804	0	TDXX	TMR #131-1	deployed	ODF	29-59.90N	151-09.32W	g	VANC33MV
0808	110804	0	TDXX	TMR #131-1	on deck	ODF	29-59.91N	151-09.23W	g	VANC33MV
2342	110804	0	TDXX	TMR #133-1	deployed	ODF	30-00.03N	149-39.45W	g	VANC33MV
0037	120804	0	TDXX	TMR #133-1	on deck	ODF	30-00.06N	149-39.34W	g	VANC33MV
1917	120804	0	TDXX	TMR #135-2	deployed	ODF	30-00.04N	148-08.96W	g	VANC33MV
2012	120804	0	TDXX	TMR #135-2	on deck	ODF	29-59.94N	148-09.18W	g	VANC33MV
0633	130804	0	TDXX	TMR #137-1	deployed	ODF	30-00.01N	146-38.93W	g	VANC33MV
0725	130804	0	TDXX	TMR #137-1	on deck	ODF	29-59.78N	146-39.06W	g	VANC33MV
2152	130804	0	TDXX	TMR #139-1	deployed	ODF	29-59.98N	145-09.26W	g	VANC33MV
2251	130804	0	TDXX	TMR #139-1	on deck	ODF	29-59.97N	145-08.52W	g	VANC33MV
1706	140804	0	TDXX	TMR #141-2	deployed	ODF	30-00.07N	143-38.67W	g	VANC33MV
1812	140804	0	TDXX	TMR #141-2	on deck	ODF	30-00.17N	143-38.38W	g	VANC33MV
0420	150804	0	TDXX	TMR #143-1	deployed	ODF	30-00.01N	142-08.51W	g	VANC33MV
0518	150804	0	TDXX	TMR #143-1	on deck	ODF	30-00.00N	142-08.38W	g	VANC33MV
1907	150804	0	TDXX	TMR #145-1	deployed	ODF	30-00.02N	140-38.55W	g	VANC33MV
2007	150804	0	TDXX	TMR #145-1	on deck	ODF	29-59.93N	140-38.35W	g	VANC33MV
1333	160804	0	TDXX	TMR #147-2	deployed	ODF	30-00.17N	139-08.24W	g	VANC33MV
1428	160804	0	TDXX	TMR #147-2	on deck	ODF	30-00.22N	139-08.38W	g	VANC33MV
0022	170804	0	TDXX	TMR #149-1	deployed	ODF	29-59.93N	137-38.22W	g	VANC33MV
0116	170804	0	TDXX	TMR #149-1	on deck	ODF	29-59.86N	137-38.20W	g	VANC33MV
1802	170804	0	TDXX	TMR #151-2	deployed	ODF	30-00.01N	136-08.25W	g	VANC33MV
1858	170804	0	TDXX	TMR #151-2	on deck	ODF	30-00.00N	136-08.16W	g	VANC33MV
0433	180804	0	TDXX	TMR #153-1	deployed	ODF	30-00.00N	134-44.32W	g	VANC33MV
0527	180804	0	TDXX	TMR #153-1	on deck	ODF	29-59.91N	134-44.40W	g	VANC33MV
2120	180804	0	TDXX	TMR #155-2	deployed	ODF	29-59.73N	133-34.94W	g	VANC33MV
2213	180804	0	TDXX	TMR #155-2	on deck	ODF	29-59.52N	133-34.68W	g	VANC33MV
0644	190804	0	TDXX	TMR #157-1	deployed	ODF	29-59.97N	132-25.89W	g	VANC33MV
0738	190804	0	TDXX	TMR #157-1	on deck	ODF	30-00.04N	132-25.78W	g	VANC33MV
2335	190804	0	TDXX	TMR #159-2	deployed	ODF	30-00.17N	131-16.50W	g	VANC33MV
0030	200804	0	TDXX	TMR #159-2	on deck	ODF	30-00.24N	131-16.42W	g	VANC33MV
0911	200804	0	TDXX	TMR #161-1	deployed	ODF	29-59.96N	130-07.16W	g	VANC33MV
1013	200804	0	TDXX	TMR #161-1	on deck	ODF	29-59.86N	130-06.76W	g	VANC33MV
2251	200804	0	TDXX	TMR #163-1	deployed	ODF	29-59.89N	128-57.59W	g	VANC33MV
2353	200804	0	TDXX	TMR #163-1	deployed	ODF	30-00.00N	128-57.57W	g	VANC33MV
1552	210804	0	TDXX	TMR #165-2	deployed	ODF	30-00.05N	127-48.19W	g	VANC33MV
1648	210804	0	TDXX	TMR #165-2	on deck	ODF	30-00.18N	127-48.12W	g	VANC33MV
0418	220804	0	TDXX	TMR #167-2	deployed	ODF	29-59.82N	126-39.23W	g	VANC33MV
0513	220804	0	TDXX	TMR #167-2	on deck	ODF	29-59.84N	126-39.48W	g	VANC33MV
1735	220804	0	TDXX	TMR #169-2	deployed	ODF	30-00.02N	125-29.62W	g	VANC33MV
1832	220804	0	TDXX	TMR #169-2	on deck	ODF	30-00.07N	125-29.49W	g	VANC33MV

#GMT	DDMMYY	SAMP	B	SAMPLE	DISP				p	CRUISE
#TIME	DATE	TZ	CODE	E IDENTIFIER	CODE	LATITUDE	LONGITUDE		c	LEG-SHIP
#-----	--	---	-	-----	----	-----	-----	-----	-	-----
0252	230804	0	TDXX	TMR #171-1	deployed	ODF	29-59.97N	124-20.47W	g	VANC33MV
0348	230804	0	TDXX	TMR #171-1	on deck	ODF	30-00.00N	124-20.41W	g	VANC33MV
1907	230804	0	TDXX	TMR #173-2	deployed	ODF	30-15.40N	123-15.94W	g	VANC33MV
1957	230804	0	TDXX	TMR #173-2	on deck	ODF	30-15.59N	123-15.88W	g	VANC33MV
0334	240804	0	TDXX	TMR #175-1	deployed	ODF	30-46.34N	122-16.44W	g	VANC33MV
0429	240804	0	TDXX	TMR #175-1	on deck	ODF	30-46.40N	122-16.41W	g	VANC33MV
1906	240804	0	TDXX	TMR #177-2	deployed	ODF	31-16.61N	121-16.06W	g	VANC33MV
2000	240804	0	TDXX	TMR #177-2	on deck	ODF	31-16.26N	121-16.13W	g	VANC33MV
0430	250804	0	TDXX	TMR #179-1	deployed	ODF	31-46.61N	120-14.99W	g	VANC33MV
0524	250804	0	TDXX	TMR #179-1	on deck	ODF	31-46.77N	120-15.01W	g	VANC33MV
2103	250804	0	TDXX	TMR #182-1	deployed	ODF	32-03.38N	119-38.81W	g	VANC33MV
2200	250804	0	TDXX	TMR #181-1	on deck	ODF	32-03.46N	119-38.97W	g	VANC33MV
0518	260804	0	TDXX	TMR #184-1	deployed	ODF	32-18.47N	119-09.00W	g	VANC33MV
0612	260804	0	TDXX	TMR #184-1	on deck	ODF	32-18.54N	119-09.05W	g	VANC33MV

*** ARGO Floats ***

1153	010804	0	CMXX	ARGO Float #111	depl	ODF	29-59.29N	165-06.96W	g	VANC33MV
0424	030804	0	CMXX	ARGO Float #116	depl	ODF	30-00.58N	161-46.61W	g	VANC33MV
1951	060804	0	CMXX	ARGO Float #119	depl	ODF	26-59.99N	159-06.07W	g	VANC33MV
1423	070804	0	CMXX	ARGO Float #120	depl	ODF	29-59.95N	159-01.06W	g	VANC33MV
2315	080804	0	CMXX	ARGO Float #124	depl	ODF	30-00.05N	156-13.71W	g	VANC33MV
2021	110804	0	CMXX	ARGO Float #132	depl	ODF	30-00.01N	150-23.90W	g	VANC33MV
1132	130804	0	CMXX	ARGO Float #137	depl	ODF	29-59.98N	146-39.18W	g	VANC33MV
1816	140804	0	CMXX	ARGO Float #141	depl	ODF	30-00.24N	143-38.38W	g	VANC33MV
2350	150804	0	CMXX	ARGO Float #145	depl	ODF	29-59.99N	140-38.69W	g	VANC33MV
0453	170804	0	CMXX	ARGO Float #149	depl	ODF	29-59.97N	137-38.48W	g	VANC33MV
0900	180804	0	CMXX	ARGO Float #153	depl	ODF	30-00.18N	134-43.96W	g	VANC33MV

*** Net Tows ***

1513	080804	0	ONXX	Net Tow #123	deploye	ODF	29-59.56N	156-55.04W	g	VANC33MV
1542	080804	0	ONXX	Net Tow #123	on deck	ODF	29-59.63N	156-54.37W	g	VANC33MV
2325	080804	0	ONXX	Net Tow #124	deploye	ODF	29-59.91N	156-13.44W	g	VANC33MV
2355	080804	0	ONXX	Net Tow #124	on deck	ODF	29-59.55N	156-12.79W	g	VANC33MV
0811	090804	0	ONXX	Net Tow #125	deploye	ODF	29-58.66N	155-31.71W	g	VANC33MV
0836	090804	0	ONXX	Net Tow #125	on deck	ODF	29-58.23N	155-31.24W	g	VANC33MV
1605	090804	0	ONXX	Net Tow #126	deploye	ODF	30-00.01N	154-50.48W	g	VANC33MV
1634	090804	0	ONXX	Net Tow #126	on deck	ODF	29-59.59N	154-49.86W	g	VANC33MV
0040	100804	0	ONXX	Net Tow #127	deploye	ODF	30-00.12N	154-08.40W	g	VANC33MV
0105	100804	0	ONXX	Net Tow #127	on deck	ODF	30-00.25N	154-07.56W	g	VANC33MV

*** Expendable Bathythermographs ***

1713	290704	0	BTXP	TF_00023		GDC	23-18.85N	159-57.05W	g	VANC33MV
1801	300704	0	BTXP	TF_00025		GDC	27-10.86N	163-39.47W	g	VANC33MV
1807	050804	0	BTXP	TF_00026		GDC	22-28.90N	159-15.96W	g	VANC33MV
1830	060804	0	BTXP	TF_00028		GDC	26-42.69N	159-06.61W	g	VANC33MV

*** End Sample Index VANC33MV