

INFORMAL REPORT AND INDEX OF
NAVIGATION, DEPTH, MAGNETIC AND SUBBOTTOM PROFILER DATA

(Issued November 1984)

PROTEA EXPEDITION

LEG 2

Easter Island (15 October 1983)
to
Valparaiso, Chile (23 October 1983)

R/V Melville

Chief Scientist - J. C. Sempere (U.C. Santa Barbara)

Resident Marine Tech - E. G. Pillard

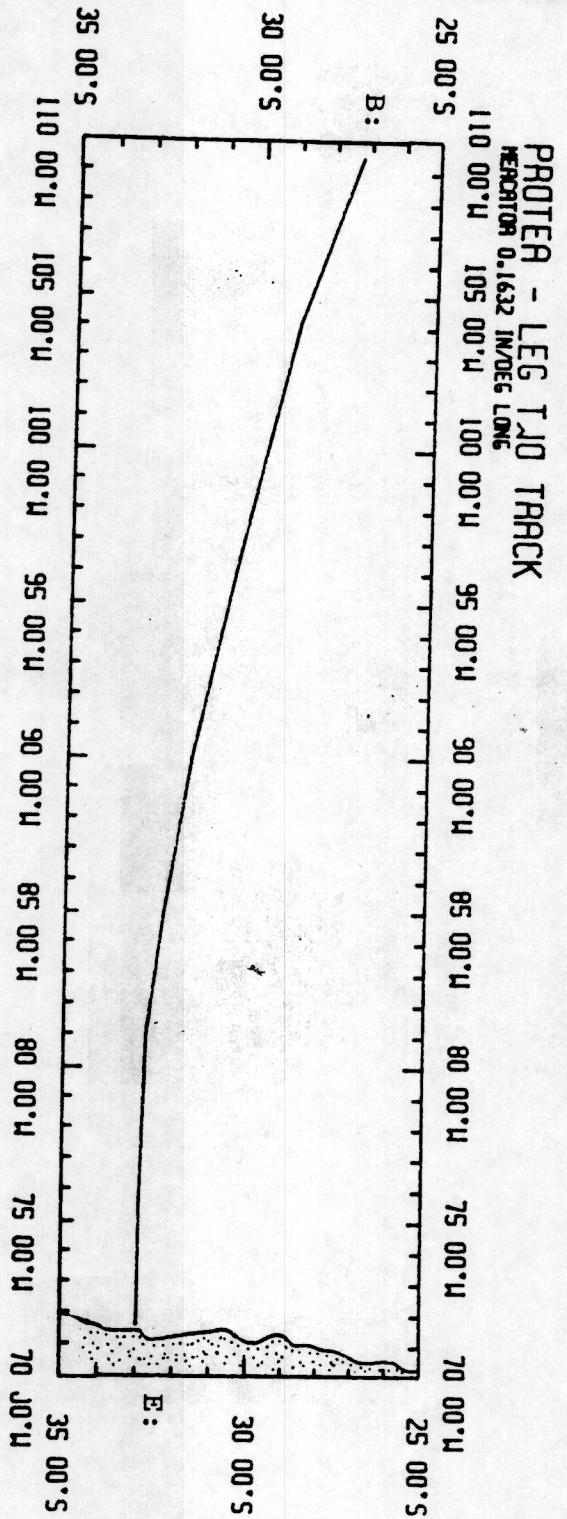
Post-Cruise Processing and Report Preparation
by S.I.O. Geological Data Center

Data Collection Funded by NSF
Grant Number NSF OCE80-24472
Data Processing Funded by SIA and NSF

NOTE: This is an index of underway geophysical data edited and processed after the completion of the cruise leg and is intended primarily for informal use within the institution. This document is not to be reproduced or distributed outside Scripps without prior approval of the chief scientist or the Geological Data Center, Scripps Institution of Oceanography, La Jolla, California 92093.

GDC Cruise I.D.# 212

WARNING - ABSTRACT DATA PRESENT ON



PROTEA EXPEDITION
LEG 2

CHIEF SCIENTIST: J. C. Sempere (U.C. Santa Barbara)
PORTS: Easter Island - Valparaiso, Chile
DATES: 15 - 23 October 1983
SHIP: R/V Melville

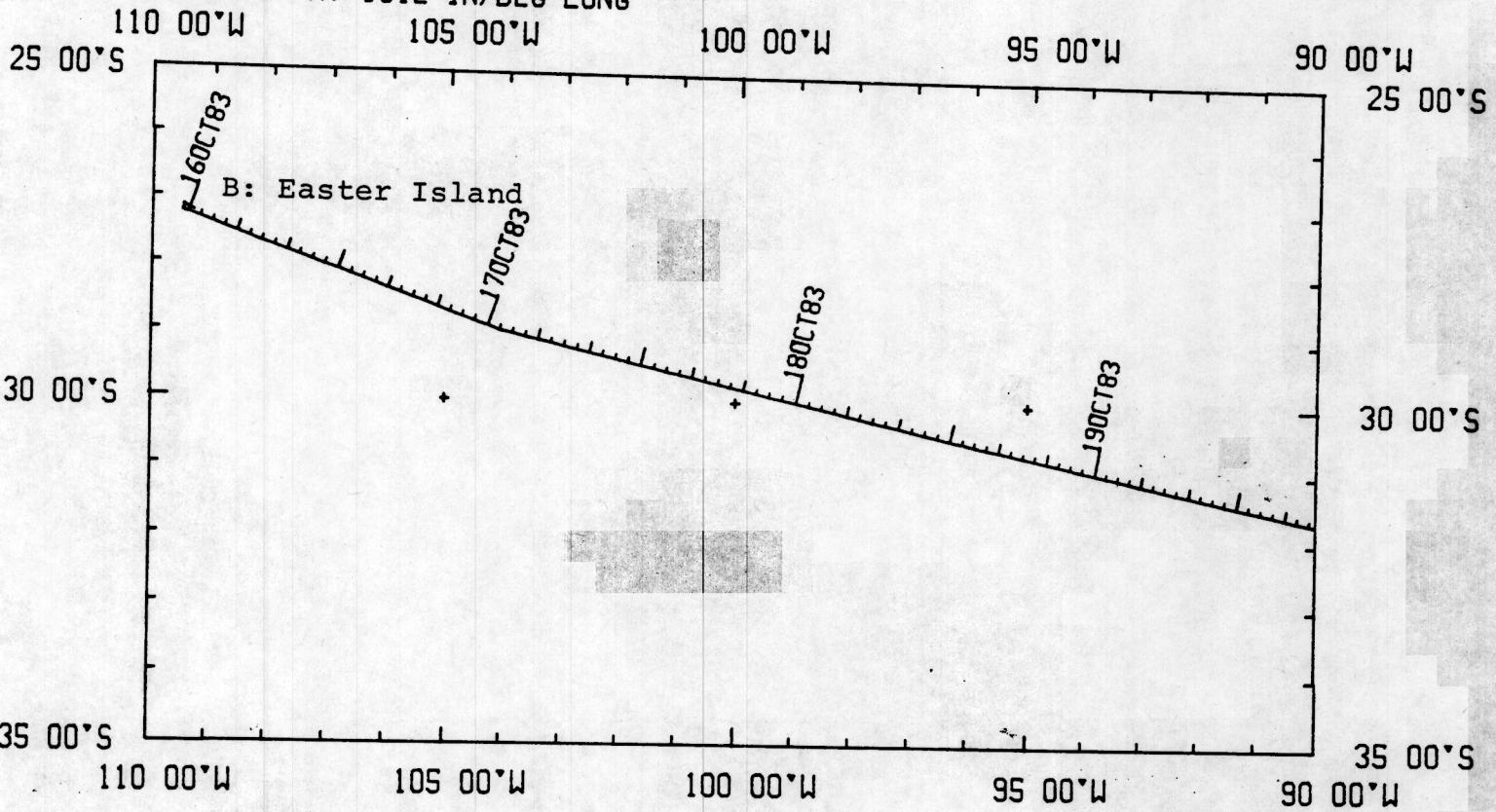
TOTAL MILEAGE OF UNDERWAY DATA COLLECTED

- 1) Cruise - 1998 miles
- 2) Bathymetry - 1973 miles
- 3) Magnetics - 610 miles
- 4) Seismic Reflection - none collected
- 5) Gravity - none collected
- 6) Seabeam - (on R/V Thomas Washington only)

PROTO2MV

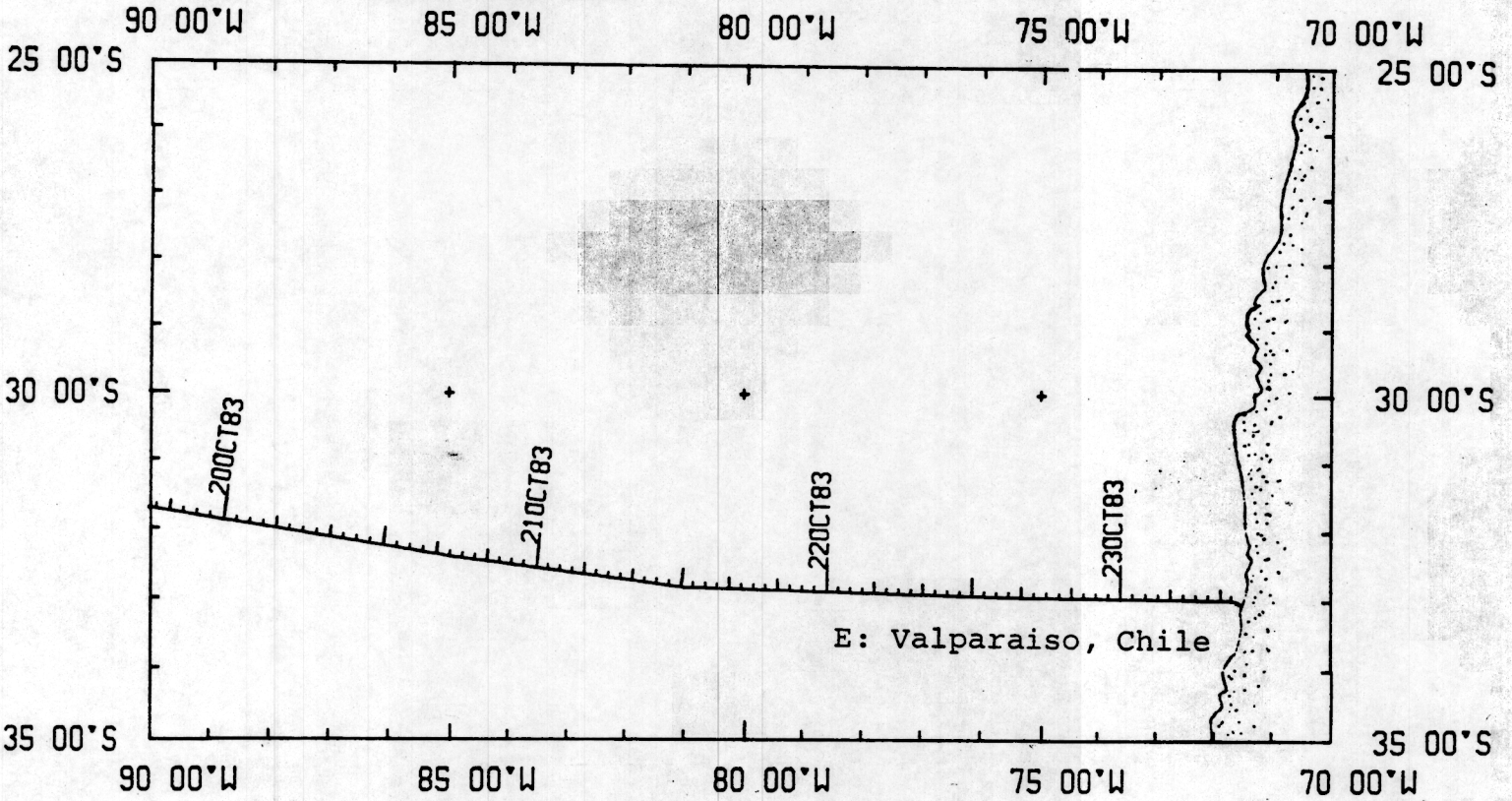
TRACK PLOT 1 OF 2

MERCATOR AT .312 IN/DEG LONG

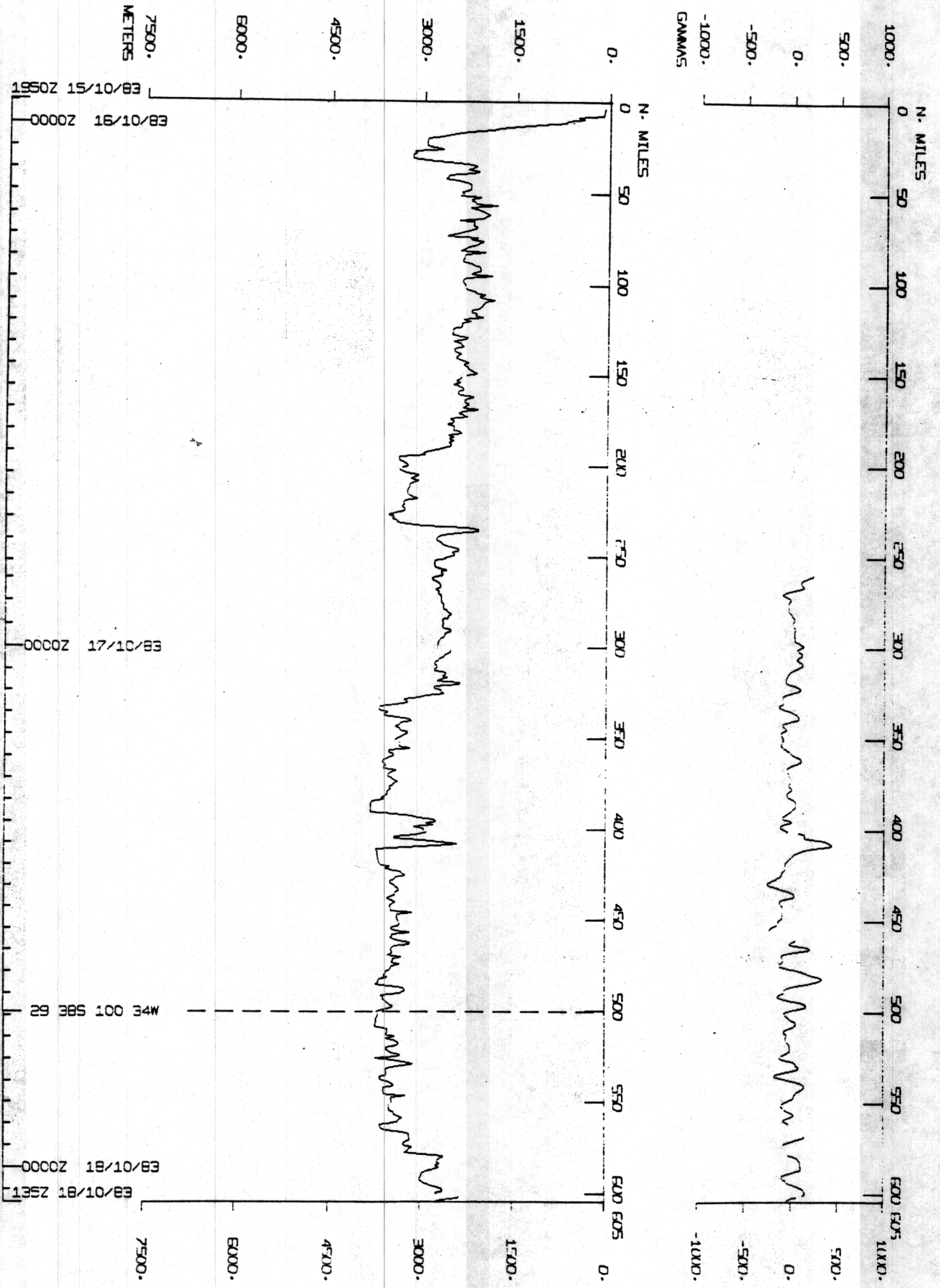


WARNING - ABSOLUTE 'HIGH PRESENT ON THIS PLOT

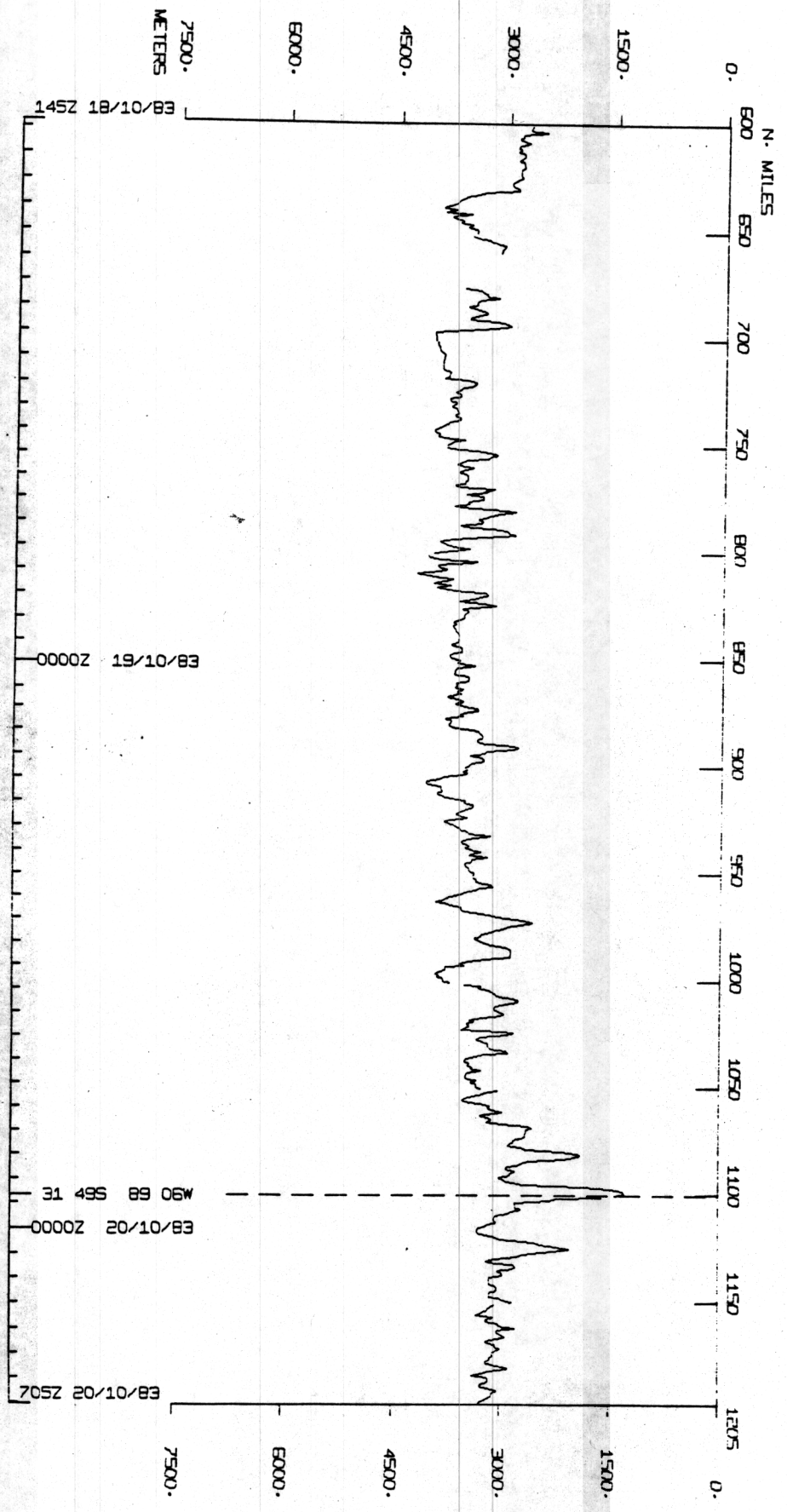
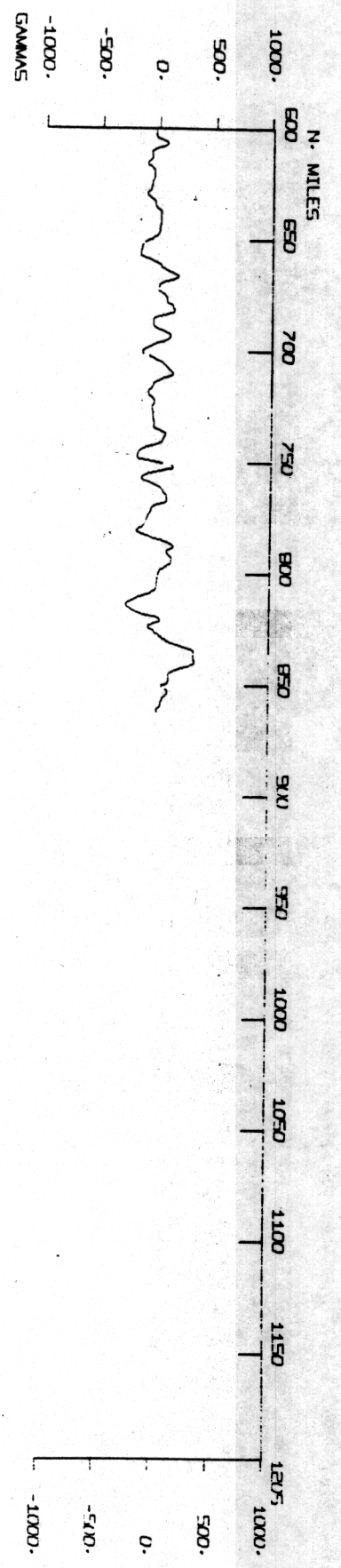
PROTO2MV
TRACK PLOT 2 OF 2
MERCATOR AT .312 IN/DEG LONG



PROTO2MV



PROTO2MV



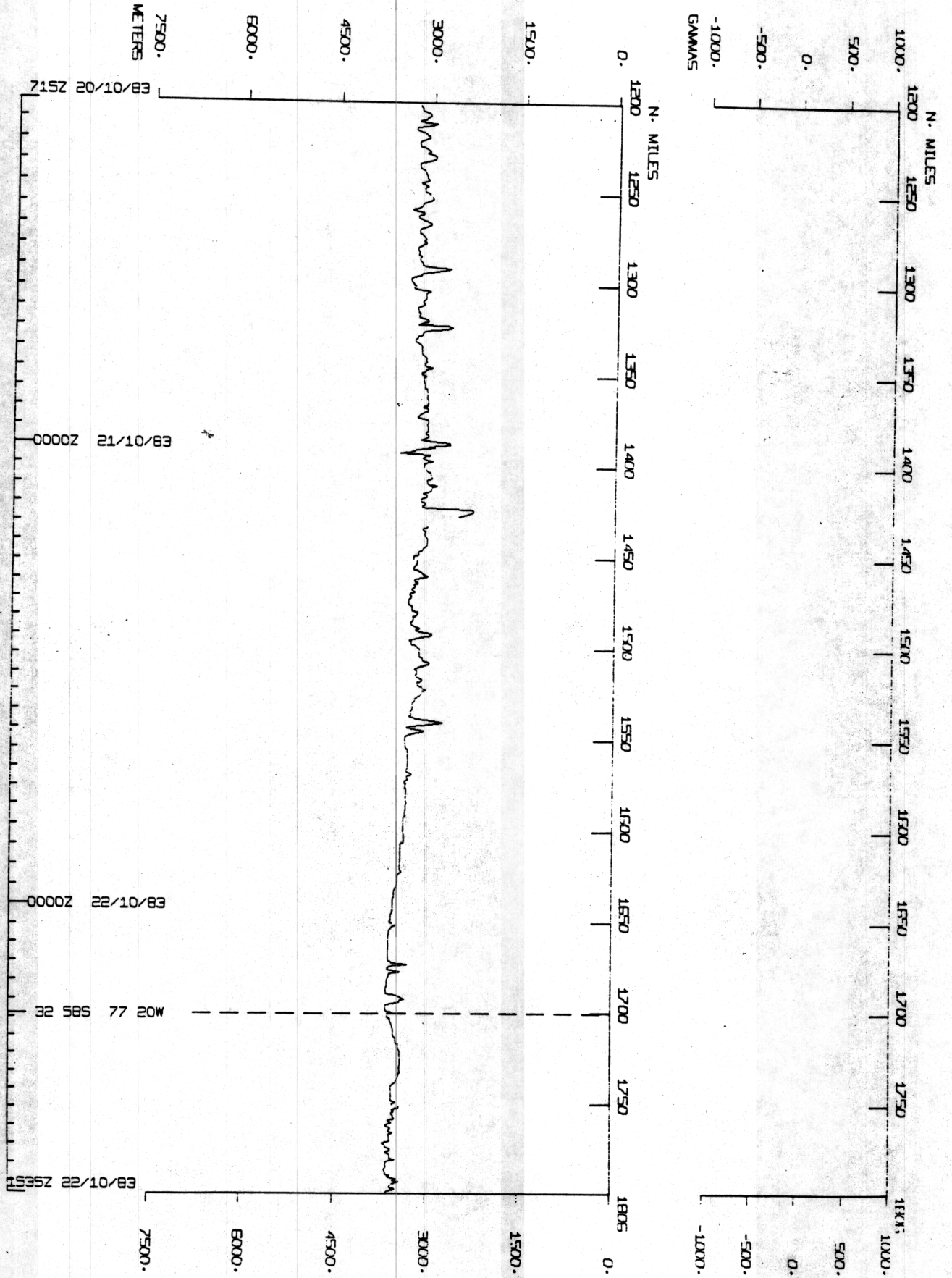
145Z 18/10/83

0000Z 19/10/83

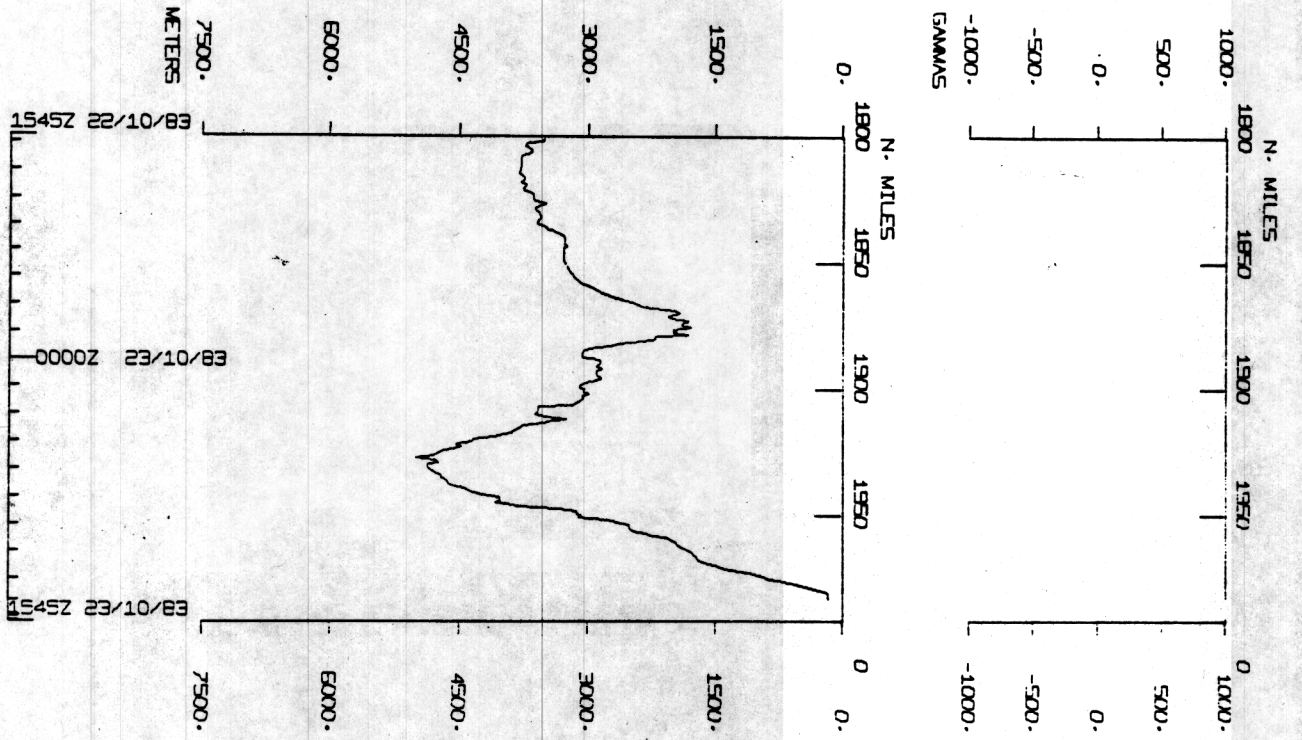
31 49S 89 06W
0000Z 20/10/83

705Z 20/10/83

PROT02MV



PROTO2MV



S.I.O. SAMPLE INDEX
(Issued November 1984)

PROTEA EXPEDITION

Leg 2

Easter Island (15 October 1983)
to
Valparaiso, Chile (23 October 1983)

R/V Melville

Chief Scientist - J. C. Sempere (U.C. Santa Barbara)

Post-Cruise Processing and Report Preparation
by S.I.O. Geological Data Center

Index Encoding Funded by NSF
Grant Number OCE80-22996
Index Processing and Report Preparation
funded in part by SIA

The Sample Index is a first level interdisciplinary listing of time, position, sample identification and disposition of all samples, records and measurements collected on this cruise leg. The index data are encoded at sea by the resident marine technician and processed on shore by the S.I.O. Geological Data Center shortly after the completion of the cruise leg.

Positions are interpolated on the basis of sample time by comparison to a single, edited navigation file. Samples beginning at one time and position and ending at another are entered on two consecutive lines. Disposition and sample type are represented by three and four character codes to permit future computer searches on these parameters. (Listings defining these codes are available from the Geological Data Center.)

GDC Cruise I.D. #212

PROTEA LEG 2 SAMPLE INDEX

PROTO2MV

PORTS

2330 151083	LGPT B EASTER ISLAND	27 09 S 109 27 W F	PROTO2MV
900 231083	LGPT E VALPARAISO, CHILE	33 02 S 71 37 W F	PROTO2MV

PERSONNEL

*** NAME ***	*** TITLE ***	*** AFFILIATION ***	*CRUISE*
PECS UCS SEMPERE, J.C.	CHIEF SCIENTIST	U.C. SANTA BARBARA	PROTO2MV
PEST UCS BICKNELL, J.	GRAD STUDENT	U.C. SANTA BARBARA	PROTO2MV
PESP MPL CAROLLA, G.F.	ENGR. AID	SCRIPPS INSTITUTION	PROTO2MV
PEST UCS COLLINSON, T.B.	GRAD STUDENT	U.C. SANTA BARBARA	PROTO2MV
PEST UCS HALL, C.G.	STUDENT	U.C. SANTA BARBARA	PROTO2MV
PESP MPL JAIN, J.K.	ENGINEER	SCRIPPS INSTITUTION	PROTO2MV
PEST UCS KENDY, E.	STUDENT	U.C. SANTA BARBARA	PROTO2MV
PECT MTG MOE, R.L.	COMPUTER TECH	SCRIPPS INSTITUTION	PROTO2MV
PEST UCS NICHOLS, N.J.	STUDENT	U.C. SANTA BARBARA	PROTO2MV
PEST UCS PASTIZZO, D.M.	STUDENT	U.C. SANTA BARBARA	PROTO2MV
PERT MTG PILLARD, E.G.	RES. TECH.	SCRIPPS INSTITUTION	PROTO2MV
PESP MPL WILKINSON, J.P.	ELECT. TECH.	SCRIPPS INSTITUTION	PROTO2MV
PEST UCS ZUKIN, J.H.	STUDENT	U.C. SANTA BARBARA	PROTO2MV

NOTES

AN 'X' IN THE (B)EGIN/(E)ND COLUMN FOLLOWING THE SAMPLE CODE INDICATES NO SAMPLE OR DATA RECOVERED. A 'C' INDICATES CONTINUATION OF DATA COLLECTION FROM BEFORE THE BEGINNING OR AFTER THE END OF A PARTICULAR LEG. (MOORED BOTTOM INSTRUMENTS, FOR EXAMPLE.) THE NUMBER APPEARING IN THE COLUMNS BETWEEN THE SAMPLE IDENTIFIER AND THE DISPOSITION CODE, FOR MANY SAMPLE ENTRIES, IS THE WATER DEPTH IN CORRECTED METERS.

GMT TIME	DDMMYY DATE	SAMP CODE	SAMPLE IDENTIFIER	DISP CODE	LAT.	LONG.	CRUISE LEG-SHIP
-------------	----------------	--------------	----------------------	--------------	------	-------	--------------------

*** UNDERWAY DATA CURATOR - STUART M. SMITH EXT. 2752 ***

LOG BOOKS

2325	151083	LBUW B	UNDERWAY LOG	GDC 27	123S	109 297W	S PROTO2MV
900	231083	LBUW E	UNDERWAY LOG	GDC 32	599S	71 426W	S PROTO2MV

FATHOGRAMS

2330	151083	DPRT B	12 KHZ EDO R-01	GDC 27	133S	109 298W	S PROTO2MV
2101	181083	DPRT E	12 KHZ EDO- R-01	GDC 30	528S	94 270W	S PROTO2MV
2107	181083	DPRT B	12 KHZ EDO R-02	GDC 30	531S	94 257W	S PROTO2MV
900	231083	DPRT E	12 KHZ EDO R-02	GDC 32	599S	71 426W	S PROTO2MV

MAGNETICS

2330	151083	MGRA B	MAGNETICS R-01	GDC 27	133S	109 298W	S PROTO2MV
55	191083	MGRA E	MAGNETICS R-01	GDC 31	29S	93 387W	S PROTO2MV
9900			END SAMPLE INDEX				PROTO2MV