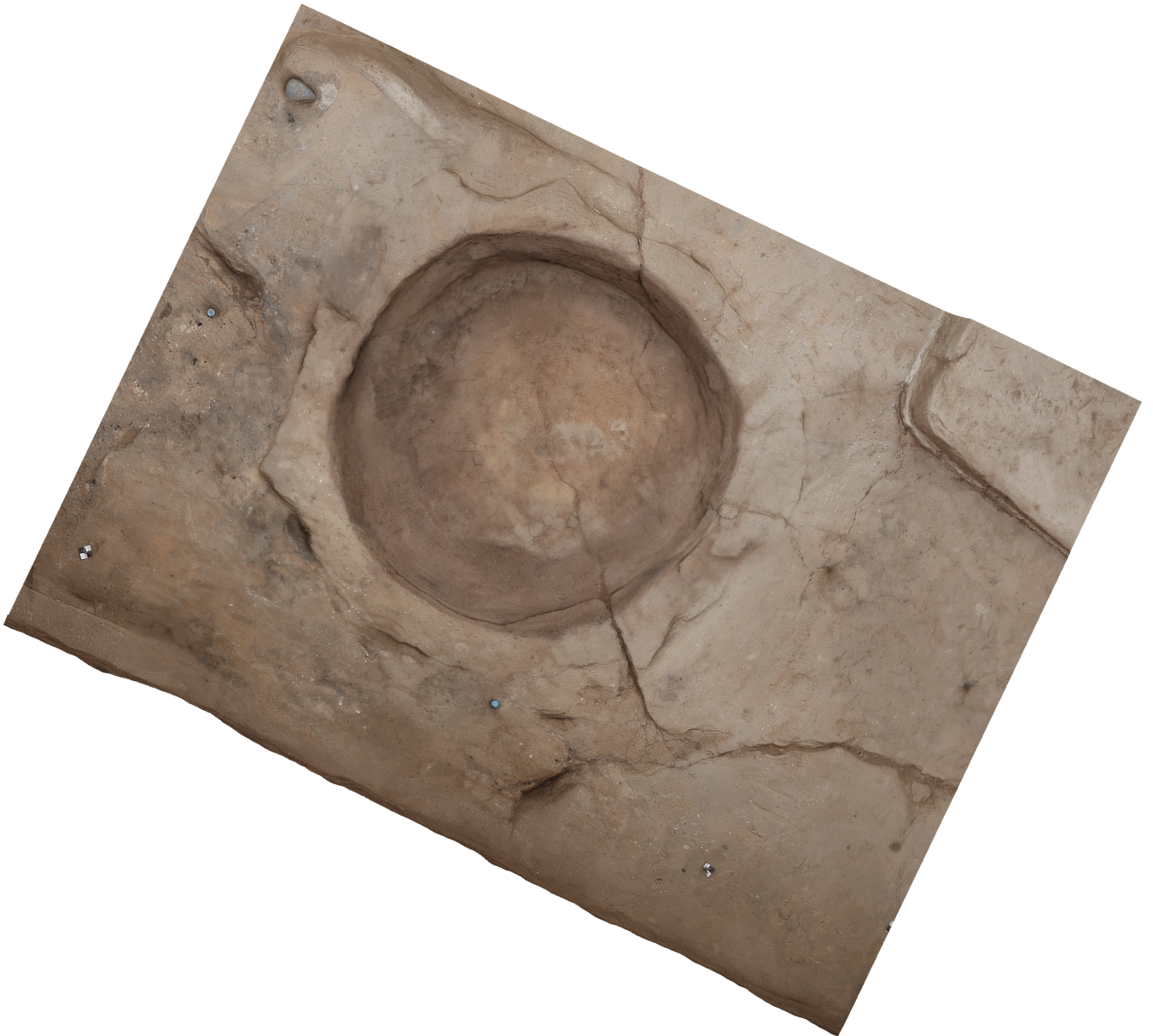


Agisoft PhotoScan

Processing Report
01 November 2014



Survey Data

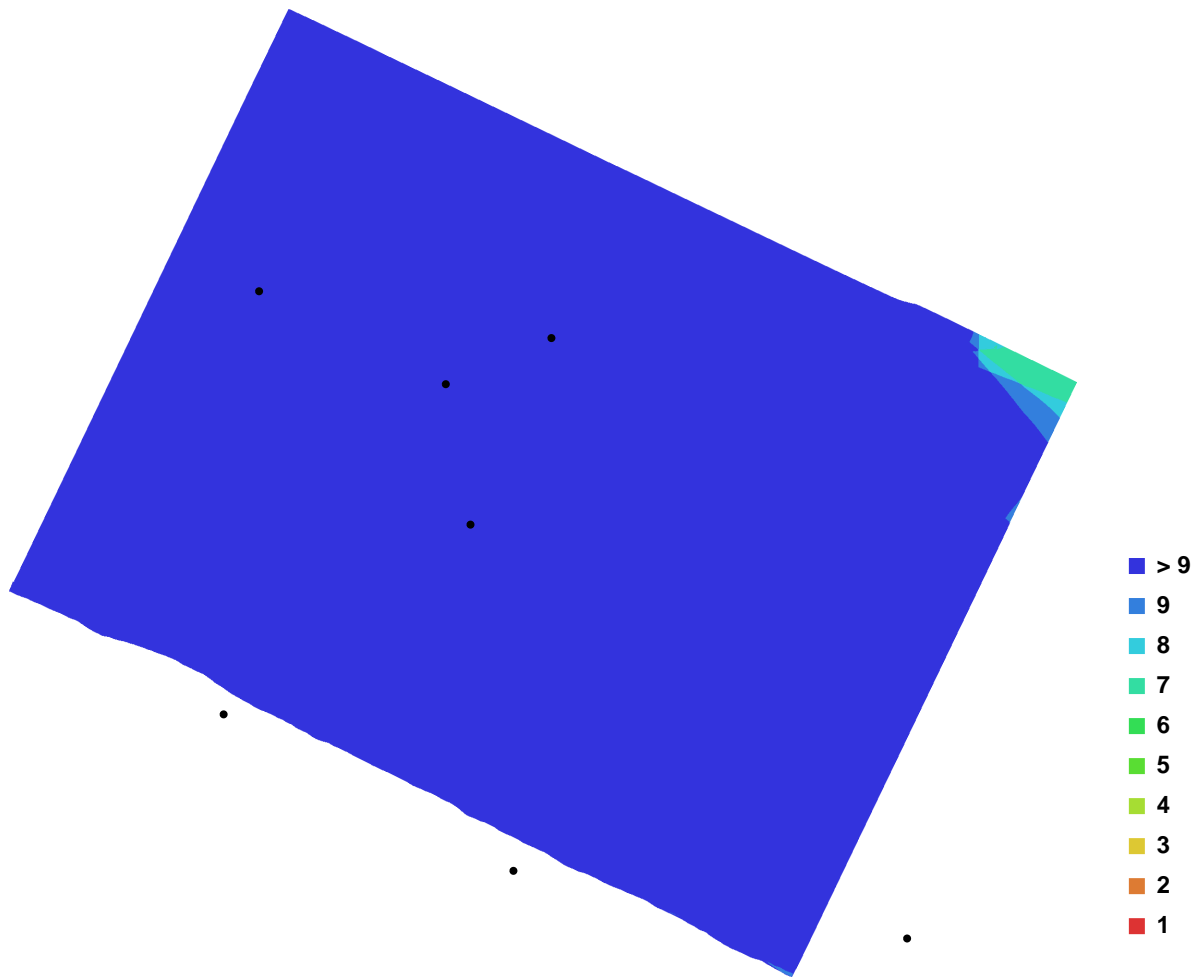


Fig. 1. Camera locations and image overlap.

Number of images:	22	Camera stations:	22
Flying altitude:	1.84104 m	Tie-points:	72470
Ground resolution:	0.000321569 m/pix	Projections:	186519
Coverage area:	1.78986e-006 sq km	Error:	0.890957 pix

Camera Model	Resolution	Focal Length	Pixel Size	Precalibrated
Canon EOS M (18 mm)	5184 x 3456	18 mm	4.384 x 4.384 um	No

Table. 1. Cameras.

Digital Elevation Model

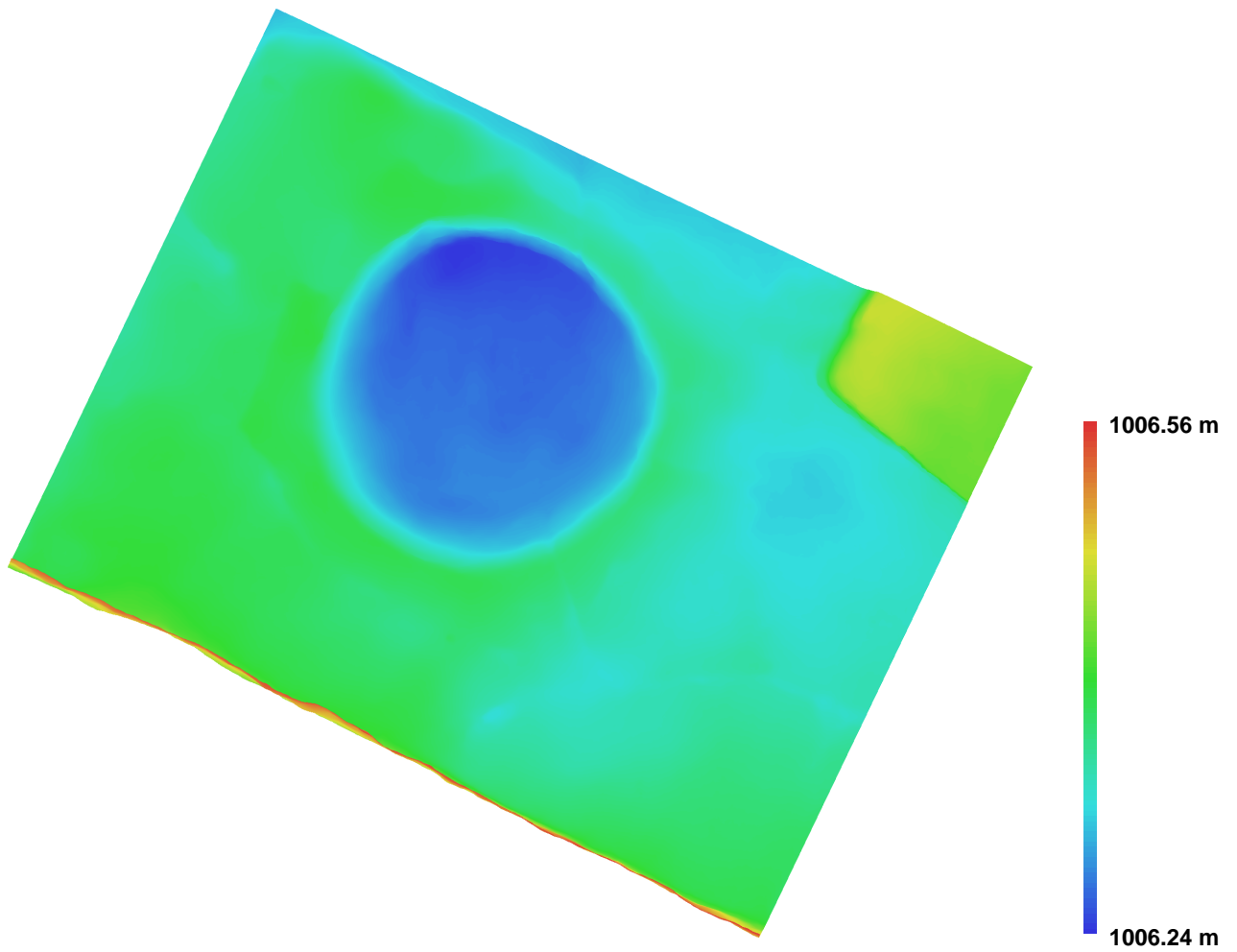


Fig. 2. Reconstructed digital elevation model.

Resolution: 0.00128627 m/pix
Point density: 604412 points per sq m