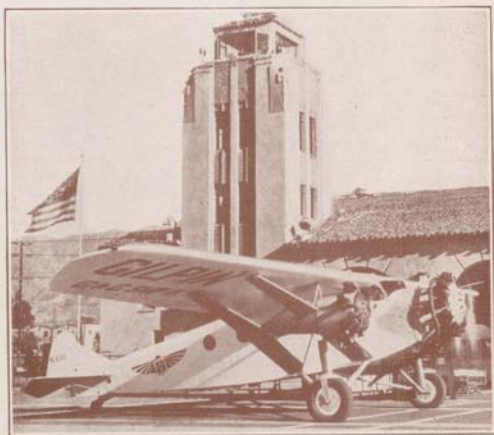


# GILPIN AIR LINES

G. & G. AIR LINES CO., LTD.



*Swift comfort from*

**LOS ANGELES  
LONG BEACH  
SAN DIEGO  
PALM SPRINGS**

*to*

**AGUA CALIENTE**

*Mexico*

*along the famed  
Southern California Coast*

# SPEED

# CONVENIENCE

## SOUTH BOUND — DAILY

Operating from Grand Central Air Terminal, Glendale, California

Lv. Los Angeles for Long Beach—San Diego—Agua Caliente	- - -	8:30 A.M.	11:45 A.M.	3:00 P.M.
Lv. Long Beach for San Diego—Agua Caliente	- - - - -	8:45 A.M.	12:00 M.	3:15 P.M.
Arr. San Diego from Long Beach—Los Angeles	- - - - -	9:45 A.M.	1:00 P.M.	4:15 P.M.
Lv. San Diego for Agua Caliente	- - - - -	9:50 A.M.	1:05 P.M.	4:20 P.M.

## NORTH BOUND — DAILY

Operating from Lindbergh Field, San Diego, California

Lv. Agua Caliente for San Diego—Long Beach—Los Angeles	- - -	10:00 A.M.	1:15 P.M.	5:00 P.M.
Lv. San Diego for Long Beach—Los Angeles	- - - - -	10:15 A.M.	1:30 P.M.	5:30 P.M.
Arr. Long Beach	- - - - -	11:15 A.M.	2:30 P.M.	6:30 P.M.
Arr. Los Angeles	- - - - -	11:30 A.M.	2:45 P.M.	6:45 P.M.

## PALM SPRINGS — DAILY

Lv. Los Angeles	- - - - -	4:00 P.M.	Arr. Palm Springs	- - - - -	5:00 P.M.
Lv. Palm Springs	- - - - -	10:00 A.M.	Arr. Los Angeles	- - - - -	11:00 A.M.

## Ensenada Service on Request

## THROUGH SERVICE



Our planes make direct connections with other airlines and surface carriers. Planes leaving San Diego at 10:15 A.M.—1:30 P.M. make direct connection with Varney Speed Lines for Oakland, San Francisco and Sacramento.



Our own Limousine service to or from all Hotels in Los Angeles and Hollywood—75 cents per passenger.

In San Diego Yellow Cab Service from Downtown Hotels to Lindbergh Field—35 cents per passenger.

# LOW FARES



## LOS ANGELES TO

San Diego - - - \$4.95; Round Trip - - - \$ 8.91  
Agua Caliente - 7.95; Round Trip - - - 14.31  
Long Beach - - - 3.00; Round Trip - - - 5.40  
Long Beach Fares are the same as from Los Angeles

---

---

## SAN DIEGO TO

Los Angeles - - \$4.95; Round Trip - - - \$ 8.91  
Long Beach - - - 4.95; Round Trip - - - 8.91  
Agua Caliente - 3.00; Round Trip - - - 5.40

---

---

## LOS ANGELES — PALM SPRINGS

Los Angeles to Palm Springs—

One Way - - - \$7.75; Round Trip - - - \$13.95

---

---

**ALL SCHEDULES AND FARES ARE SUBJECT  
TO CHANGE WITHOUT NOTICE**

---

---

During the life of operations the GILPIN AIR LINES have transported more than 25,000 passengers, 2,225,000 miles, establishing a record of one hundred percent safety and efficiency. Luxurious tri-motored airplanes and swift single motored planes have maintained schedules with clocklike regularity, earning the confidence and patronage of the traveling public. In 1932 the Gilpin Air Lines were compelled to operate 348 extra schedules to accommodate those who had made reservations.

---

---

# Appreciate your Southern California

Fly along the picturesque coast of Southern California. Cruise along through colorful valleys. As we save time in traveling, enjoy this beautiful panorama by flying high above the grime and inconvenience of surface travel.

Powerful motors carry us over the mosaic pattern of the city of Los Angeles, the largest on the Pacific Coast. Among other buildings can be seen the familiar landmarks of the Olympic Stadium and the City Hall. As we soar on toward Long Beach, the broad Pacific Ocean sparkles in the sunlight. Mighty warships of the United States Navy appear as children's toys as they lie at anchor in the outer harbor. Giant commercial vessels from all parts of the world are loading and unloading.

Ahead of us we can see endless miles of silver breakers guiding us southward. Passing Balboa and Newport Beaches, the coast line changes from wide flat beaches to rugged cliffs and jutting rocks as we near Laguna Beach where many famous artists make their home.

Following the shoreline we see the Coast Highway (El Camino Real). Automobiles, though speeding, move in caterpillar-like procession along the road's smooth surface. Off to the west, Catalina Island pokes its rocky outline out of the blue Pacific toward a still bluer sky broken only by wispy clouds which float lazily past. Below us on our left we see the crumbling, yet imposing, ruins of San Juan Capistrano Mission. Farther inland the lofty peaks of mountains stand like white-haired sentinels guarding the green fields in the valleys below.

We glide easily to earth at San Diego, where California began. Dozens of Army and Navy planes circle about North Island and Coronado. Destroyers and submarines nestle in the sheltered waters of San Diego Bay. Little fishing boats make their way in and out of the harbor.

Sixteen miles farther south we find everything that one finds at Monte Carlo. Agua Caliente is extraordinarily beautiful, with a marvelous hotel, racing, golf, swimming, music and dancing. A spot as foreign as Europe itself, yet within eighty minutes from Los Angeles where other Gilpin Airlines planes are taking off for Palm Springs, which lies at the foot of Mount San Jacinto on a desert floor that radiates with the color of millions of desert blooms.



**EFFECTIVE MARCH 15, 1933**

# GILPIN AIR LINES

## GENERAL INFORMATION

**TICKETS**—May be purchased at Company offices, Hotels, Travel Bureaus and Postal Telegraph Offices.

**RESERVATIONS**—Must be made and accepted in advance.

**FARES**—All fares quoted are for adults, Airport to Airport. There are no half fares. Infants under two years are carried free.

**BAGGAGE**—Thirty pounds per passenger carried free. Excess baggage up to fifty pounds carried at a nominal charge.

**REFUNDS**—Applications for refunds may be procured at any Company office. Refunds are made by the General office only.

**CANCELLATION**—Company reserves right to cancel bookings before passage or enroute any time such action is deemed advisable or necessary. In all events, the passenger's sole recourse shall be the recovery of the unused portion of the air fare.

---

## OFFICES

**Grand Central Air Terminal** - - Phone Capitol 12131  
**Glendale** (Glendale Phone) Douglas 626

**Los Angeles** - - - City Ticket office—TRinity 8271  
636 So. Olive (24 hour service)

**Long Beach** - (Municipal Airport)—Phone L. B. 41680

**San Diego** - - (Lindbergh Field)—Phone Main 8144

**Palm Springs** - - - - Phone Palm Springs 4191

**Agua Caliente** - - Phone Tia Juana 1, Desk Clerk

---

## GENERAL OFFICES

1200 AIRWAY, GRAND CENTRAL AIR TERMINAL  
GLENDALE, CALIFORNIA

Special Rates on Charter Trips

ANYTIME — ANYWHERE

