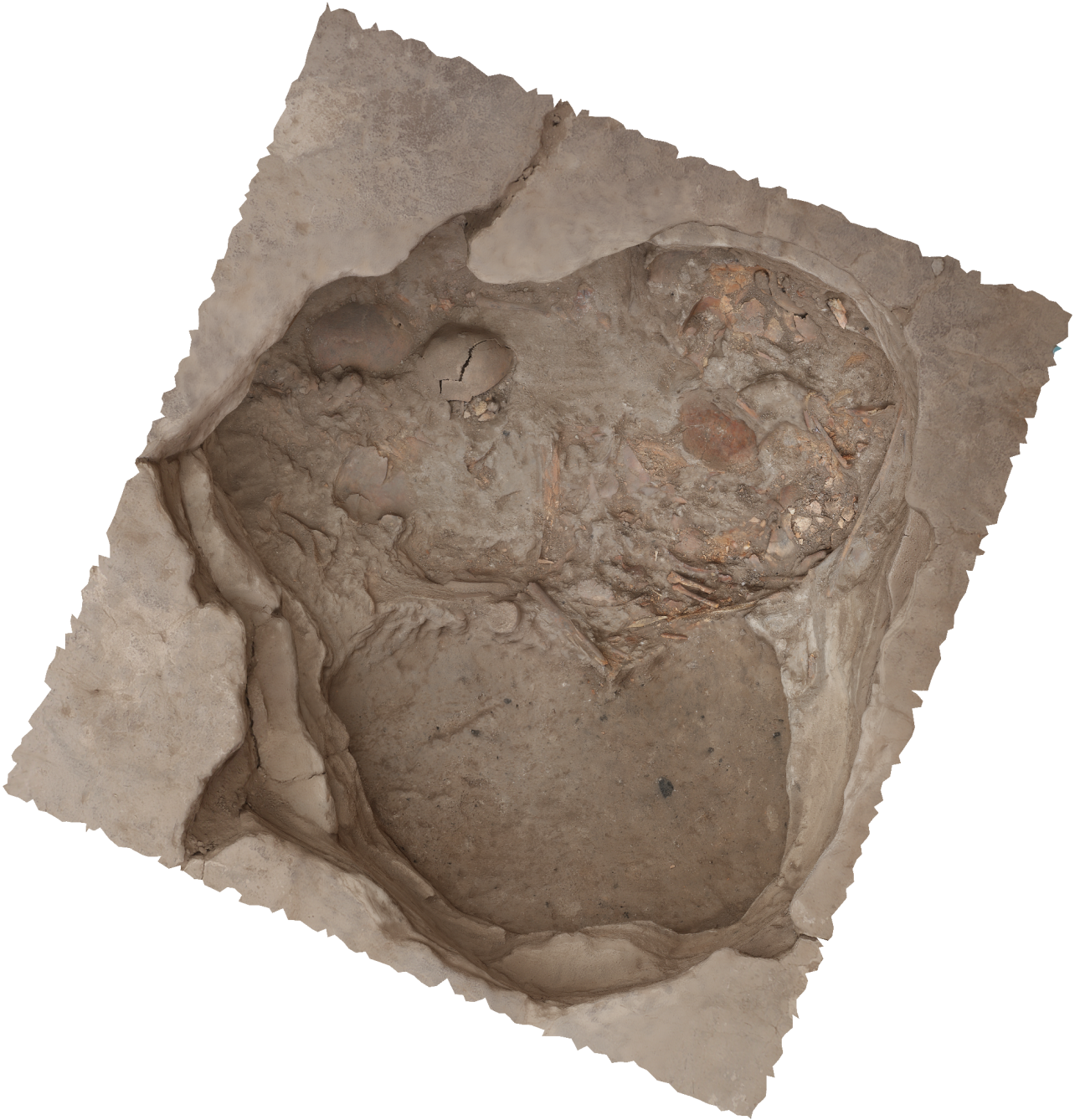


# Agisoft PhotoScan

Processing Report  
01 November 2014



# Survey Data

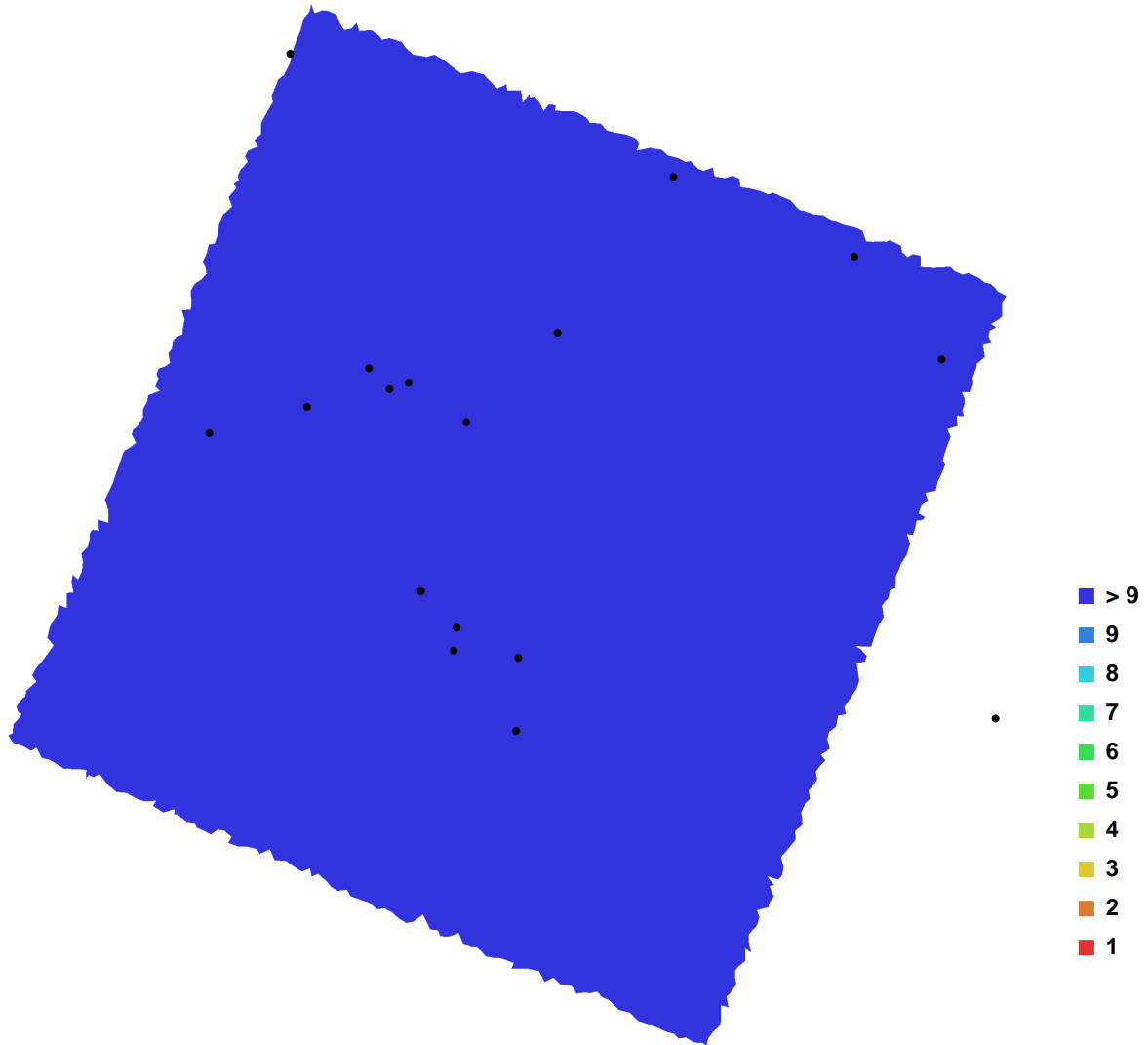


Fig. 1. Camera locations and image overlap.

Number of images:	24	Camera stations:	24
Flying altitude:	1.51211 m	Tie-points:	102975
Ground resolution:	0.000223166 m/pix	Projections:	260985
Coverage area:	1.02338e-006 sq km	Error:	0.64144 pix

Camera Model	Resolution	Focal Length	Pixel Size	Precalibrated
Canon EOS M (18 mm)	5184 x 3456	18 mm	4.384 x 4.384 um	No

Table. 1. Cameras.

# Digital Elevation Model

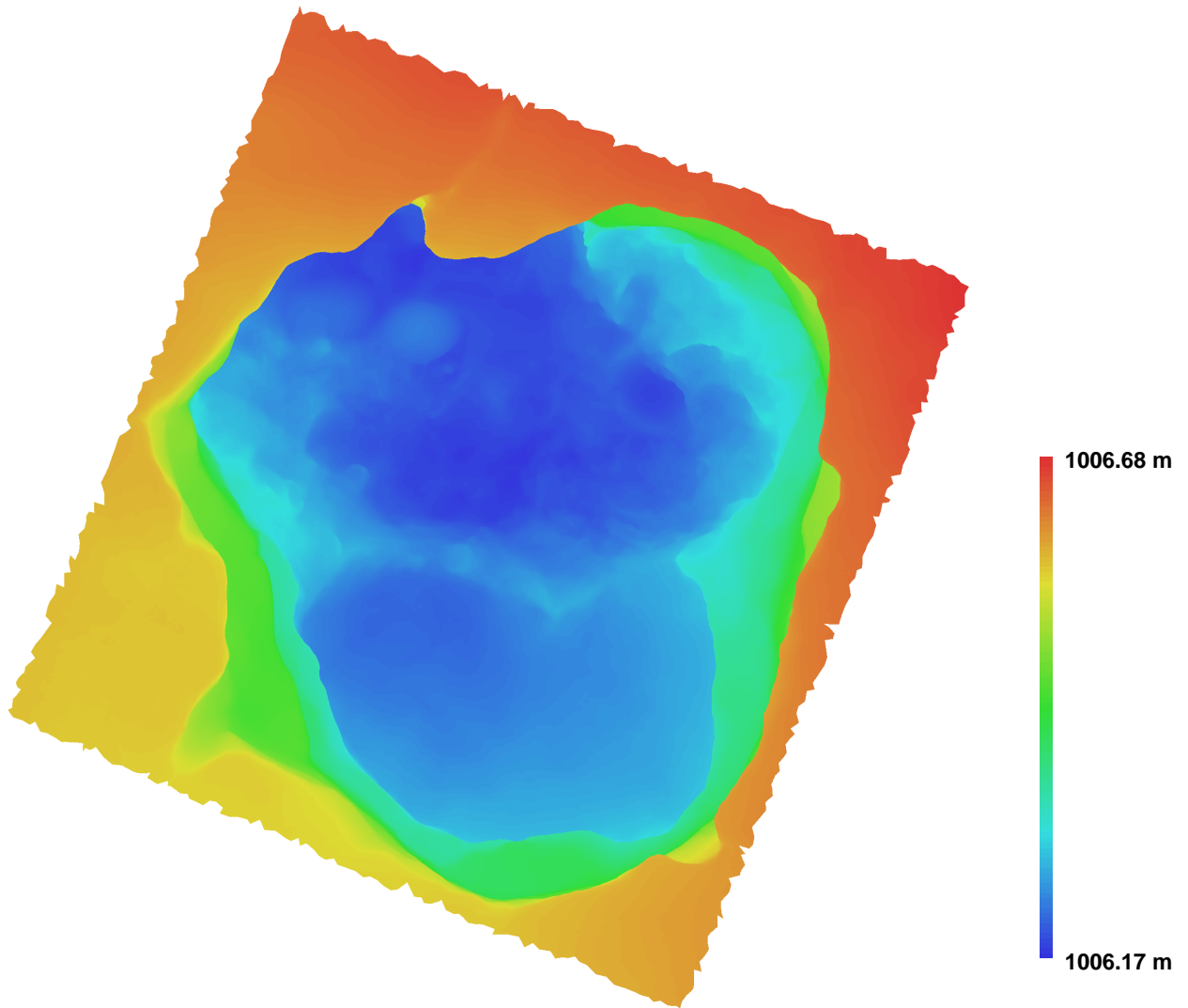


Fig. 2. Reconstructed digital elevation model.

Resolution: 0.00110785 m/pix  
Point density: 814773 points per sq m