

COLONIA SEATTLE

LOTS SELLING AT FROM 60c TO \$2 00 PER SQUARE METER

THE PASADENA OF MEXICO. THE MOST ATTRACTIVE SUBURB
OF THE FINEST CITY IN MEXICO, *GUADALAJARA*

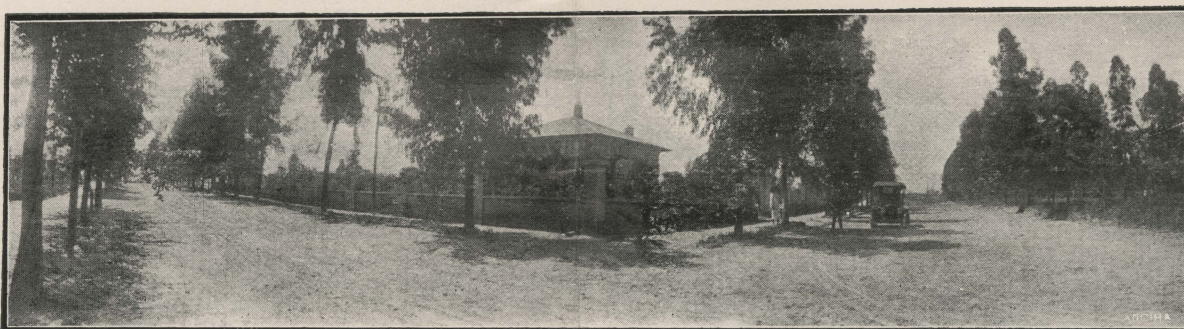
EASY TERMS TO HOME BUILDERS



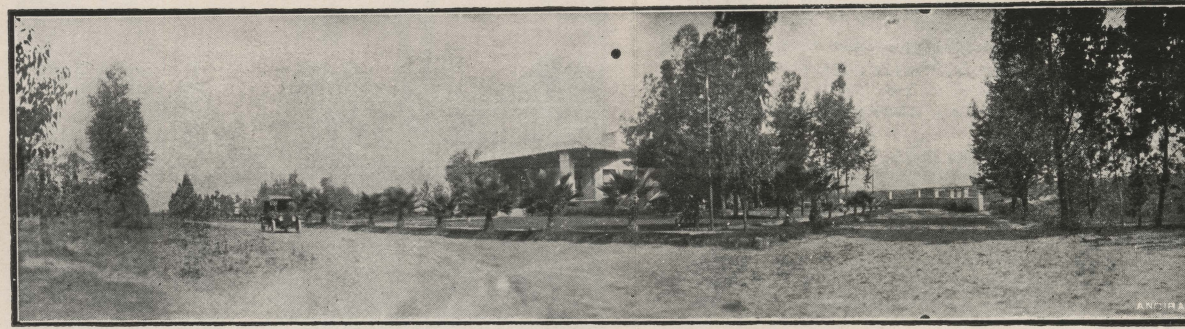
C AVENUE. "AVENIDA DE LAS PALMAS."



B AVENUE. EUCALYPTUS TREES ALONG BORDERS.



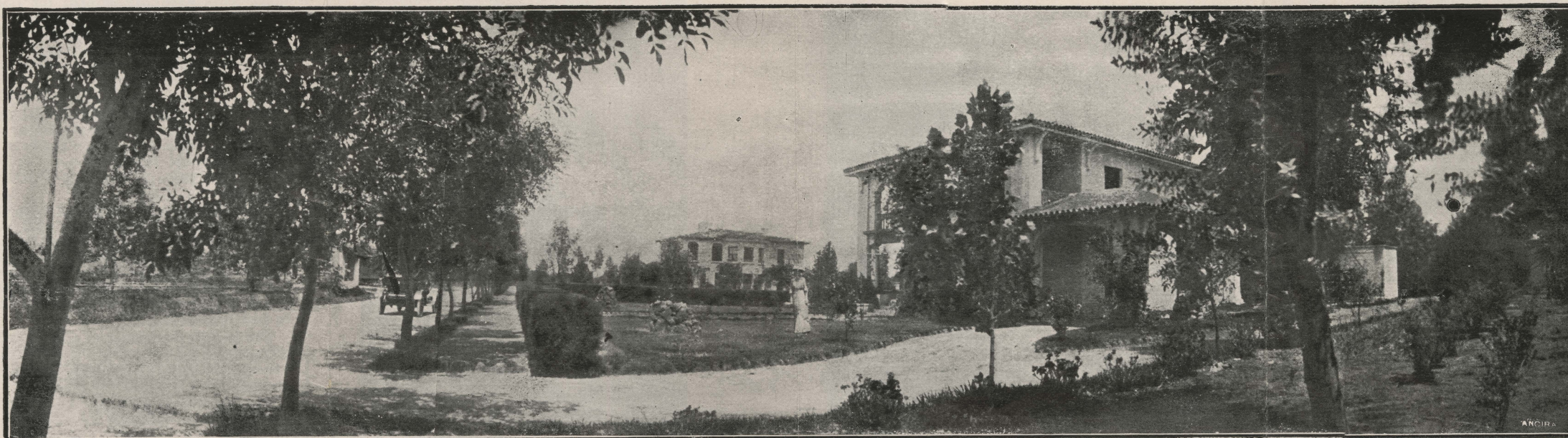
B AVENUE AND 5th STREET. RESIDENCE OF DR. FERNANDO BANDA.
EACH LOT OF 1,000 SQUARE METERS EQUAL TO ONE-FOURTH OF AN ACRE, OR THREE ORDINARY AMERICAN TOWN LOTS. EACH BLOCK CONTAINS THREE ACRES.



A AVENUE AND 5th STREET. RESIDENCE OF C. Z. CULVER.

The Episcopal Church is making the Colonia Seattle its headquarters for the Republic of Mexico. They are at the present time building a Theological and Industrial College, where school will be taught in English, Spanish and French. The Dormitory, Library and the residence for the principal are finished, and the main college building is nearing completion.

A Catholic Chapel is being built in the Colonia Seattle by Ing. Juan José Matute and a number of prominent Catholic families, residents both of the Colony and of Guadalajara. The corner-stone of the chapel was recently laid by the Archbishop of Guadalajara, and the ceremony was largely attended.



TWO OF THE MANY MODERN AMERICAN RESIDENCES IN THE COLONIA SEATTLE

The Colonia Seattle Realty Co., S. A.

Owners and Managers of the "Colonia Seattle"

C. Z. CULVER, Pres. A. R. DOWNS, Treas. & Mgr. E. R. DOWNS, Sec. & Asst. Mgr.

Av. San Francisco 241. Apartado (P. O. Box) 290. GUADALAJARA, JALISCO, MEXICO

A. R. Downs & Son

Exchange bought and sold on U. S., Mexico and Europe. Bonds negotiated.
Timber Lands, Ranches and City Property. Specialty in Colima Coconut Lands.

COLONIA SEATTLE.

COLONIA SEATTLE, the new American suburb of Guadalajara, was platted in January, 1908. Since that time we have sold more than 350,000 square meters; have completed and have under construction many modern residences, varying in size from 33 feet square to 60 x 80 feet, and having from four to thirteen rooms each. The most of these houses have modern plumbing. The cost of these houses, compared to houses in the States, is about one half; 40 per cent less than Mexico City; 25 per cent cheaper than in the City of Guadalajara. This is owing to the close proximity of building material, cheap labor and competent superintendence.

We have splendid electric car service from 6 a. m. until midnight; also cheap electric light and power. We have our own private water system, which furnishes an abundance of pure soft water, which is piped all over the Colony and furnished to residents at a very reasonable rate.

The Colony is situated northwest from and about 80 feet higher than Guadalajara and commands a fine view of the Atemajac valley and the surrounding mountains. The soil is rich and will produce anything that is planted and is especially adapted to growing fruit and forest trees. We are now growing in the Colony about 10,000 fruit and ornamental trees. Eucalyptus make a very rapid growth. Many trees of this variety are 60 feet high, and only 3 years old. Everything is being done to make it the most healthful and attractive suburb in the Republic. Our building restrictions are reasonable and practicable. All houses must be for residence purposes, and we prohibit high walls and unsightly structures.

You cannot make a better investment than to buy lots in "Colonia Seattle." Prices are very low, compared to other additions. Special inducements to home builders.

Write or call on us for further information regarding the finest home place in Mexico.

The center of Guadalajara can easily be reached in from 12 to 15 minutes over our private Automobile road, which is managed and maintained by us. The right of way is 20 meters, or 65 ft. 7 in. wide, and is under lease to us for 60 years. The road is used only as a drive or "paseo", all freight traffic being absolutely prohibited. Over one-half of the distance has already been planted with eucalyptus trees on both sides. In a few years this road will become the most attractive and popular drive in Mexico.

**GUADALAJARA'S CLIMATE IS PERFECT
SUMMER OR WINTER**



RESIDENCE OF MR. L. B. GODIN



CATHEDRAL AND PALACE, GUADALAJARA



SEATTLE INN. ENGINEER JUAN JOSÉ MATUTE



RESIDENCE OF MR. JAMES H. HOWARD

Modern Homes in "Colonia Seattle" the Real American Colony of Guadalajara - Mexico

Record of Temperature and Rainfall of Guadalajara State Observatory, from Sept. 1st., 1912 to Aug. 31, 1913

Month	Max. Tem.	Min. Tem.	Avg. Day	Avg. Night	Rainfall	Rainy Days	Greatest Rainfall	Cloudy Days	Partly Cloudy	Clear Days
Sept.	80.6	56.1	77.0	58.8	7.64	19	1.45	2	24	4
Oct.	82.4	50.0	77.7	56.8	3.46	9	.77	0	18	13
Nov.	78.8	41.0	75.6	47.1				0	4	26
Dec.	79.5	38.5	75.0	47.3	1.73	4	.17	0	8	23
Jan.	82.4	38.3	72.7	45.9				0	9	22
Feb.	81.3	40.3	74.7	46.4	.04	2	.03	0	6	26
March	87.6	37.8	81.9	48.7				0	5	19
April	87.8	46.8	82.2	51.4	8.47	17	2.36	0	11	18
May	91.0	53.2	86.0	56.7	8.68	24	1.25	1	13	6
June	88.5	58.1	82.4	59.7	7.95	19	1.70	1	23	1
July	82.4	50.0	77.4	57.6				1	29	5
Aug.	83.1	56.3	77.5	58.1					25	
TOTAL					37.97	94		5	175	185

NO OTHER PLACE ON EARTH CAN EQUAL THIS RECORD

GUADALAJARA

GUADALAJARA is the second city of Mexico and is the cleanest, finest, brightest and healthiest of them all.

Founded in 1530, it has been for more than three centuries the educational, commercial and ecclesiastical center of Western Mexico. It is the capital of the State of Jalisco, the first in point of agriculture and stockraising in the Republic. For an all-the-year-round residence place it is internationally famous. Winter in Guadalajara is merely a courteous definition applied to a period of enjoyable sunny days, some of the mornings of which may be opened with a tang of light frost; while summer, with its delightful showers three evenings a week, and a mean temperature of 73° Fahr., is the finest season of the year. The altitude is 5,223 feet. Population 125,000.

Guadalajara is destined to become the chief manufacturing center of Mexico because of the abundance of cheap electrical power available from the Santiago river, just north of the city. It is already the center of an active and productive mining region developed by Americans.

Guadalajara's attractive features are: Abundant electric light; modernly equipped electric street railway, connecting city with suburbs quickly and comfortably; many miles of asphalt paved streets; excellent water and drainage system; American school, churches, clubs and lodges.

The American population of Guadalajara is about 1,000, and there are that many more Americans engaged in mining and other enterprises in the surrounding country who make this city their headquarters for trade and social intercourse. All over Western Mexico Americans are at work reviving old mining camps, opening big timber tracts and establishing new industries. Guadalajara is the outfitting center for all this activity. With the coming of the Southern Pacific Railway, now approaching from the Arizona frontier, the "Pearl of the Occident" will be brought into close touch with the Pacific coast cities of the United States and Canada, and an increased foreign population, as well as a big enhancement of real estate values, is certain to result.

Guadalajara's industrial enterprises are principally owned by foreigners. The French are leaders in the manufacture of cotton goods and dominate the dry goods trade through a half-dozen immense establishments; the Germans are manufacturers of hardware, implements, machinery, ammunition, etc.; the Americans go in for merchandising, banking and the professions and trades as well as a number of industries, while the Spaniards and Italians vie with the Mexicans in retail business, architectural pursuits and ranching.



VIEW ON THE PRIVATE AUTOMOBILE ROAD
CONNECTING GUADALAJARA WITH THE
COLONIA SEATTLE

The best automobile road in the Republic
of Mexico outside of the Federal District.

**The Sun Shines Three Hundred and Sixty Days
in the Year in Guadalajara**

The "Colonia Seattle" is the Beauty Spot of the
Most Beautiful Section of Mexico.



A COCOANUT PALM IN STATE OF COLIMA

Cocoanuts in bearing produce more
net income with less risk and work
than any other tropical product.

COCOANUTS

COCO-PALMS, once in bearing, will produce more net income than oranges or apples, and that with little work and practically no risk. There is no place more naturally adapted for Coco-palms than the West Coast of Mexico, especially the State of Colima, where not only climate and soil are naturally adapted to the growth, but the proximity of both a good harbor and a railroad facilitate the economical marketing of the product.

Coco-palms should be planted 100 to the acre and will be in bearing the fifth year. Each palm produces a bunch of nuts each lunar month, or 13 bunches per year. While each bunch has from 20 to 36 nuts, calculations are based on less than half of that, or 150 nuts per palm per year, or 15,000 nuts per acre per year.

The nuts are worth \$20.00, gold, per 1000 on board ship, making a gross income of \$300, gold, per year. The total expense of gathering and transporting to seacoast could not possibly reach one half this amount. Or the meat of the cocoanuts may be taken out and dried, making Copra. Each acre will produce 3 3/4 tons of copra per year, worth \$120.00 per ton in San Francisco.

The world's production of copra has increased from 1900, with a production of 168,656 long tons with an average price of £16-0-0, to 328,453 long tons at an average price of £24-0-0 in 1909.

The imports of copra into the United States have increased from 7,064,500 lbs. in 1907 to 37,817,051 lbs. in 1911.

The opening of the Panama Canal will bring the West Coast of Mexico into prominence by giving facilities for cheap and efficient transportation to any part of the world.

WE SELL COLIMA COCOANUT LANDS

A. R. DOWNS & SON

Av. San Francisco 241

Apartado 290

Guadalajara, Jalisco, México

COLONIA SEATTLE

LOTS SELLING FROM 30c TO \$1.00 (GOLD) PER SQUARE METER



AVENIDA DE LAS PALMAS, 82 FEET WIDE AND $\frac{3}{4}$ OF A MILE LONG



FRONTING ELECTRIC CAR LINE, AVENIDA D

EACH LOT OF 1,000 SQUARE METERS EQUAL TO ONE-FOURTH OF AN ACRE, OR THREE ORDINARY AMERICAN TOWN LOTS. EACH BLOCK CONTAINS THREE ACRES

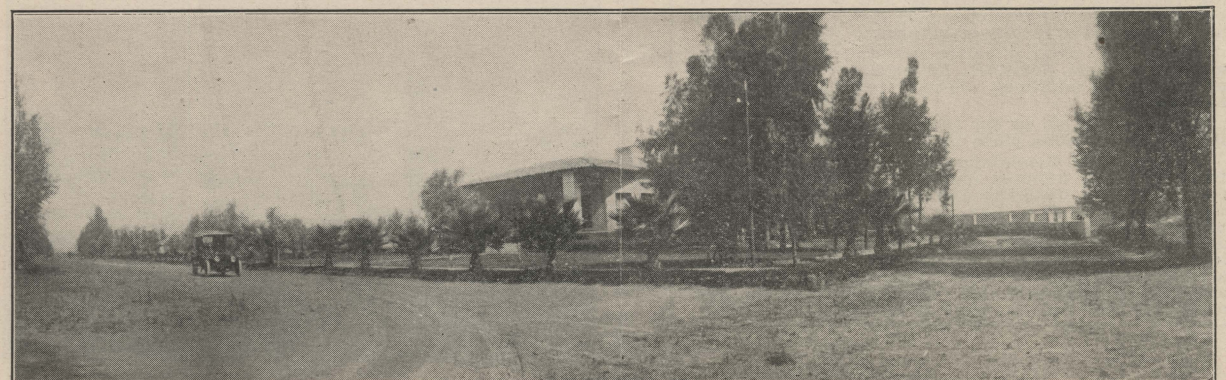
The Episcopal Church is making the Colonia Seattle its headquarters for the Republic of Mexico. They are at the present time building a Theological and Industrial College, where school will be taught in English, Spanish and French. The Dormitory, Library and the residence for the principal are finished, and the main college building is nearing completion.

THE PASADENA OF MEXICO. THE MOST ATTRACTIVE SUBURB OF THE FINEST CITY IN MEXICO, **GUADALAJARA**

EASY TERMS TO HOME BUILDERS



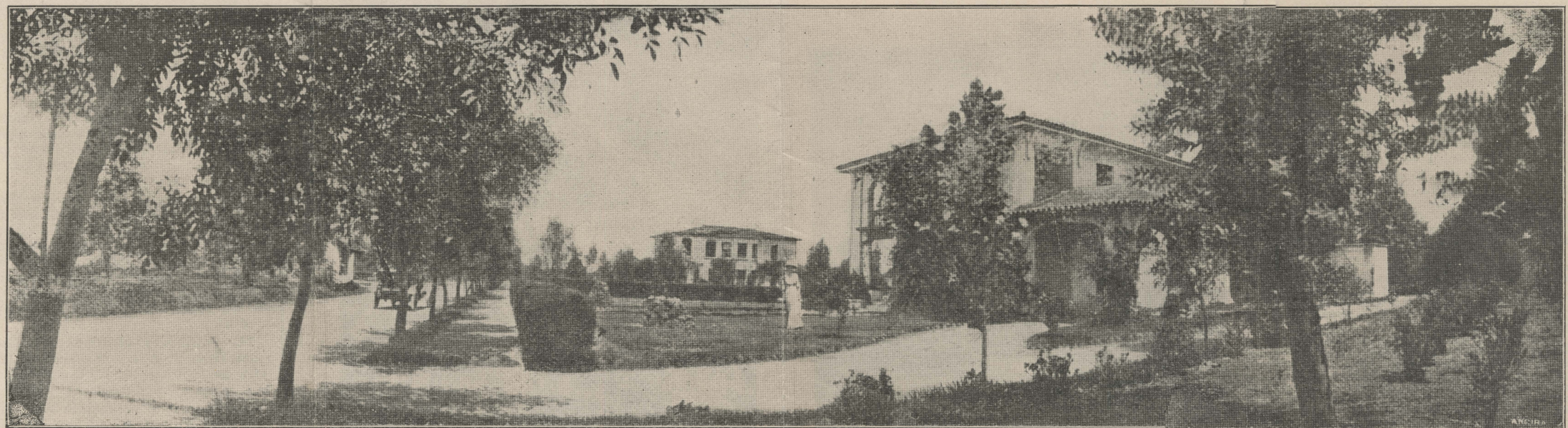
RESIDENCE OF C. E. WOOD, FIFTH STREET



RESIDENCE OF C. Z. CULVER, AVENIDA A AND FIFTH STREET

A Catholic Chapel is being built in the Colonia Seattle by Ing. Juan Jose Matute and a number of prominent Catholic families, residents both of the Colony and of Guadalajara.

The corner-stone of the chapel was recently laid by the Archbishop of Guadalajara, and the ceremony was largely attended.



Residence of Thos. L. Woodruff

Residence of A. R. Downs

TWO OF THE MANY MODERN AMERICAN RESIDENCES IN "COLONIA SEATTLE"

THE "COLONIA SEATTLE" REALTY CO., S. A.

Owners and Managers of the "Colonia Seattle"

C. Z. CULVER, Pres.

A. R. DOWNS, Treas. and Mgr.

E. R. DOWNS, Sec. and Asst. Mgr.

Av. San Francisco 241 Apartado (P. O. Box) 290.

U. S. Addresses, 508 Hoge Bldg., Seattle, Wash.

1008 Wilcox Bldg., Portland, Oregon

A. R. Downs & Son

Exchange bought and sold on U. S., Mexico and Europe. Bonds negotiated. Timber Lands, Ranches and City Property. Specialty in Colima Coconut Lands.

GUADALAJARA, JALISCO, MEXICO

323 Gross Bldg., Los Angeles, Calif., J. W. Robbarts, Agent

“COLONIA SEATTLE”

COLONIA SEATTLE, the new American suburb of Guadalajara, was platted in January, 1908. Since that time we have sold more than 350,000 square meters; have completed and have under construction many modern residences, varying in size from 33 feet square to 60x80 feet, and having from four to thirteen rooms each. The most of these houses have modern plumbing. The cost of these houses, compared to houses in the States, is about one-half; 40 per cent less than Mexico City; 25 per cent cheaper than in the City of Guadalajara. This is owing to the close proximity of building material, cheap labor and competent superintendence.

We have splendid electric car service from 6 a. m. until midnight; also cheap electric light and power. We have our own private water system, which furnishes an abundance of pure soft water, which is piped all over the Colony and furnished to residents at a very reasonable rate.

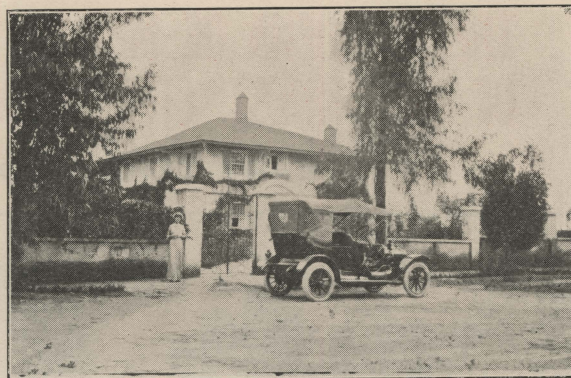
The Colony is situated northwest from and about 80 feet higher than Guadalajara and commands a fine view of the Atemajac valley and the surrounding mountains. The soil is rich and will produce anything that is planted and is especially adapted to growing fruit and forest trees. We are now growing in the Colony about 10,000 fruit and ornamental trees. Eucalyptus make a very rapid growth. Many trees of this variety are 60 feet high, and only 5 years old. Everything is being done to make it the most healthful and attractive suburb in the Republic. Our building restrictions are reasonable and practicable. All houses must be for residence purposes, and we prohibit high walls and unsightly structures.

You cannot make a better investment than to buy lots in “Colonia Seattle.” Prices are very low, compared to other additions. Special inducements to home builders.

Write or call on us for further information regarding the finest home place in Mexico.

The center of Guadalajara can easily be reached in from 12 to 15 minutes over our private Automobile road, which is managed and maintained by us. The right of way is 20 meters, or 65 ft. 7 in. wide, and is under lease to us for 60 years. The road is used only as a drive or “paseo,” all freight traffic being absolutely prohibited. Over one-half of the distance has already been planted with eucalyptus trees on both sides. In a few years this road will become the most attractive and popular drive in Mexico.

**GUADALAJARA'S CLIMATE IS PERFECT
SUMMER OR WINTER**



AVENIDA B AND 5TH ST. RES. OF DR. FERNANDO BANDA



SEATTLE INN, ENGINEER JUAN JOSE MATUTE, PROPRIETOR

**Now is the Best time to Secure Bargains in Mexico
Lands and Suburban Property**



VIEW OF GUADALAJARA, MEXICO



RESIDENCE OF MR. JAMES H. HOWARD

**“Modern Homes in Colonia Seattle”
the Real American Colony
of Guadalajara, Mexico**

Record of Temperature and Rainfall of Guadalajara

State Observatory, from Sept. 1st, 1912, to Aug. 31, 1913

Month	Max. Tem.	Min. Tem.	A. V. Day	A. V. Night	Rainfall	Rainy Days	Greatest Rainfall	Cloudy Days	Partly Cloudy	Clear Days
Sept.	80.6	56.1	77.0	58.8	7.64	19	1.45	2	24	4
Oct.	82.4	50.0	77.7	56.8	3.46	9	.77	0	18	13
Nov.	78.8	41.0	75.6	47.1				0	4	26
Dec.	79.5	38.5	75.0	47.3				0	8	23
Jan.	82.4	38.3	72.7	45.9	1.73	4	.17	0	9	22
Feb.	81.3	40.3	74.7	46.4				0	6	22
March	87.6	37.8	81.9	48.7	.04	2	.03	0	5	26
April	87.8	46.8	82.2	51.4				0	11	19
May	91.0	53.2	86.0	56.7	8.47	17	2.36	1	13	18
June	88.5	58.1	82.4	59.7	8.68	24	1.25	1	23	6
July	82.4	50.0	77.4	57.6	7.95	19	1.70	1	25	1
Aug.	83.1	56.3	77.5	58.1						5
TOTAL					37.97	94		5	175	185

NO OTHER PLACE ON EARTH CAN EQUAL THIS RECORD

GUADALAJARA

GUADALAJARA is the second city of Mexico and is the cleanest, finest, brightest and healthiest of them all.

Founded in 1530, it has been for more than three centuries the educational, commercial and ecclesiastical center of Western Mexico. It is the capital of the State of Jalisco, the first in point of agriculture and stock raising in the Republic. For an all-the-year-round residence place it is internationally famous. Winter in Guadalajara is merely a courteous definition applied to a period of enjoyable sunny days, some of the mornings of which may be opened with a tang of light frost; while summer, with its delightful showers three evenings a week, and a mean temperature of 73 degrees Fahr., is the finest season of the year. The altitude is 5,223 feet. Population 125,000.

Guadalajara is destined to become the chief manufacturing center of Mexico because of the abundance of cheap electrical power available from the Santiago river, just north of the city. It is already the center of an active and productive mining region developed by Americans.

Guadalajara's attractive features are: Abundant electric light; modern equipped electric street railway, connecting city with suburbs quickly and comfortably; many miles of asphalt paved streets; excellent water and drainage system; American school, churches, clubs and lodges.

The American population of Guadalajara is about 1,000, and there are that many more Americans engaged in mining and other enterprises in the surrounding country who make this city their headquarters for trade and social intercourse. All over Western Mexico Americans are at work reviving old mining camps, opening big timber tracts and establishing new industries. Guadalajara is the outfitting center for all this activity. With the coming of the Southern Pacific Railway, now approaching from the Arizona frontier, the “Pearl of the Occident” will be brought into close touch with the Pacific coast cities of the United States and Canada, and an increased foreign population, as well as a big enhancement of real estate values, is certain to result.

Guadalajara's industrial enterprises are principally owned by foreigners. The French are leaders in the manufacture of cotton goods and dominate the dry goods trade through a half dozen immense establishments; the Germans are manufacturers of hardware, implements, machinery, ammunition, etc.; the Americans go in for merchandising, ranching, mining, banking and the professions and trades as well as a number of industries, while the Spaniards and Italians vie with the Mexicans in retail business, architectural pursuits and ranching.

**The “Colonia Seattle” is the Beauty Spot of the
Most Beautiful Section of Mexico**



VIEW ON THE PRIVATE AUTOMOBILE ROAD
CONNECTING GUADALAJARA WITH THE
COLONIA SEATTLE

The best automobile road in the Republic of Mexico outside of the Federal District.



A COCOANUT PALM IN STATE OF COLIMA
(On the Ranch of A. R. Downs & Son)

Cocoanuts in bearing produce more net income with less risk and work than any other tropical product.

**The Sun Shines Three Hundred and Sixty Days
in the Year in Guadalajara**

COCOANUTS

COCO-PALMS, once in bearing, will produce more net income than oranges or apples, and that with little work and practically no risk. There is no place more naturally adapted for Coco-palms than the West Coast of Mexico, especially the State of Colima, where not only climate and soil are naturally adapted to the growth, but the proximity of both a good harbor and a railroad facilitate the economical marketing of the product.

Coco-palms should be planted 100 to the acre and will be in bearing the fifth year. Each palm produces a bunch of nuts each lunar month, or 13 bunches per year. While each bunch has from 20 to 36 nuts, calculations are based on less than half of that, or 150 nuts per palm per year, or 15,000 nuts per acre per year.

Three hundred dollars net per acre is a conservative estimate as the nuts will sell from \$20 to \$24 per 1,000. Or the meat of the cocoanuts dried will produce 3¾ tons copra per acre, worth \$120.00 per ton for export. Or double this amount may be realized by manufacturing the nuts where grown into many valuable food products, or extracting the oil from the nuts and feeding the by-products to stock.

The world's production of copra has increased from 1900, with a production of 168,656 long tons with an average price of £16-0-0, to 328,453 long tons at an average price of £24-0-0 in 1909.

The imports of copra into the United States have increased from 7,064,500 lbs. in 1907 to 37,817,051 lbs. in 1911.

The opening of the Panama Canal will bring the West Coast of Mexico into prominence by giving facilities for cheap and efficient transportation to any part of the world.

We Sell Colima Coconut Lands

A. R. DOWNS & SON

Av. San Francisco 241

Apartado 290

Guadalajara, Jalisco, Mexico

James Howard Collection

circa 1882-1939

MSS.0698

Oversize: FB-483 Folder: 6

**GUADALAJARA HOUSING AND MINING
DOCUMENTS - Colonia Seattle: the Pasadena
of Mexico, the most attractive suburb of
the finest city in Mexico, Guadalajara, 1913**



The Library
UC SAN DIEGO

Copyright: Public Domain

Use: This digital copy of the work is intended to support research, teaching, and private study.

Constraints: This work may be used without prior permission.