

**REPORT AND INDEX OF
UNDERWAY MARINE GEOPHYSICAL DATA**

KIWI EXPEDITION

LEG 7

(KIWI07RR)

R/V Revelle

(Issued April 1998)

Ports:

Lyttleton, New Zealand (30 November 1997)

to

Lyttleton, New Zealand (3 January 1998)

Chief Scientist:

Richard Barber, Duke University

Gene Pillard, Resident Marine Technician

Dan Jacobson, Computer Technician

No SeaBeam/UW Processor on board

**Post-Cruise Processing and Report Preparation by the
Geological Data Center, Scripps Institution of Oceanography
La Jolla, California 92093-0223**

NOTE: This is an index of underway geophysical data edited and processed after the completion of the cruise leg and is intended primarily for informal use within the institution. This document is not to be reproduced or distributed outside Scripps without prior approval of the chief scientist or the Geological Data Center, Scripps Institution of Oceanography, La Jolla, California 92093-0223

GDC Cruise I.D.# 276

**REPORT AND INDEX OF NAVIGATION
AND UNDERWAY GEOPHYSICAL DATA**

Processed by the Geological Data Center
Scripps Institution of Oceanography

Contents:

Index Chart - gives track of cruise leg, dates, ports, and mileage of each type of data collected.

Track Charts - annotated with dates and hour ticks.

Profiles - depth, magnetic and gravity free air anomaly vs. distance. (Sections of track with seismic reflection data have a wide black line along the bottom of the profile.)

Sample Index - list of begin/end times and positions of all underway records as well as samples and measurements from other disciplines collected on the leg.

NOTE: One or more of the underway data types may not be collected on a given leg. For information on the availability and reproduction costs of data in the following forms, contact S.M. Smith, Curator, Geological Data Center, Scripps Institution of Oceanography, La Jolla, California 92093-0223. Phone: (619)534-2752, FAX: (619)534-6500, Internet email: ssmith@ucsd.edu

1. Files via ftp or on 8mm (Exabyte) and 4mm (DAT) magnetic tape:
 - a) Separate time series ASCII files of navigation, single beam depth, gravity and magnetics.
 - b) Above data in a single merged ASCII file in the MGD77 Exchange Format.
 - c) SeaBeam depth data (binary, Sun byte order)
 - d) SeaBeam Sidescan data.

2. Microfilm (35 mm flowfilm) or hard copies of:
 - a) Underway watch log book.
 - b) SeaBeam vertical beam profile/Sidescan records.
 - c) 3.5 kHz and 12 kHz echosounder records.
 - d) Seismic reflection profiler records.

3. Navigation listing with times and positions of fixes and course and speed changes.

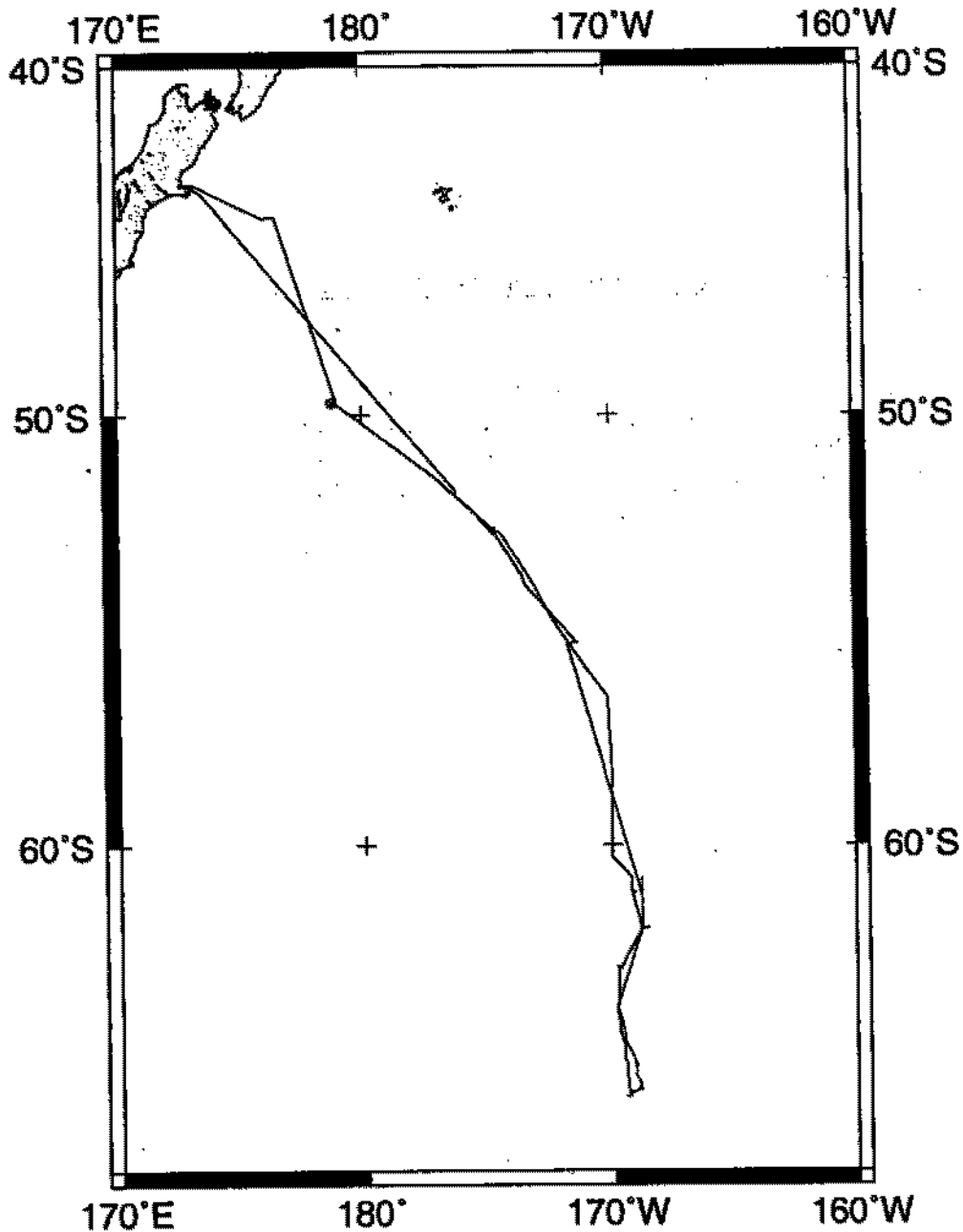
4. Custom plots in Mercator projection:
 - a) Track plots.
 - b) SeaBeam depth contour plots.
 - c) Depth, magnetic or gravity values printed or profiled along track.

Sea Beam Data Collected in Ancillary Mode

In the absence of funding for collecting multi-beam data on this leg, Sea Beam data were collected by SIO/STS in ancillary mode. In this mode of operation, no Hardware Technician or SB/Underway Processor were on board and the types of realtime records and post-processed data products are reduced from those available under the fully funded mode.

The Sea Beam data remain proprietary to the SIO Shipboard Technical Support Group, not the chief scientist.

May 1998



KIWI EXPEDITION LEG 7

CHIEF SCIENTIST: Richard Barber, Duke University

PORTS: Lyttelton - Lyttelton, New Zealand

DATES: 30 November 1997 - 03 January 1998

SHIP: R/V Revelle

TOTAL MILEAGE OF UNDERWAY DATA COLLECTED

Cruise - 3548 miles

Magnetics - none collected

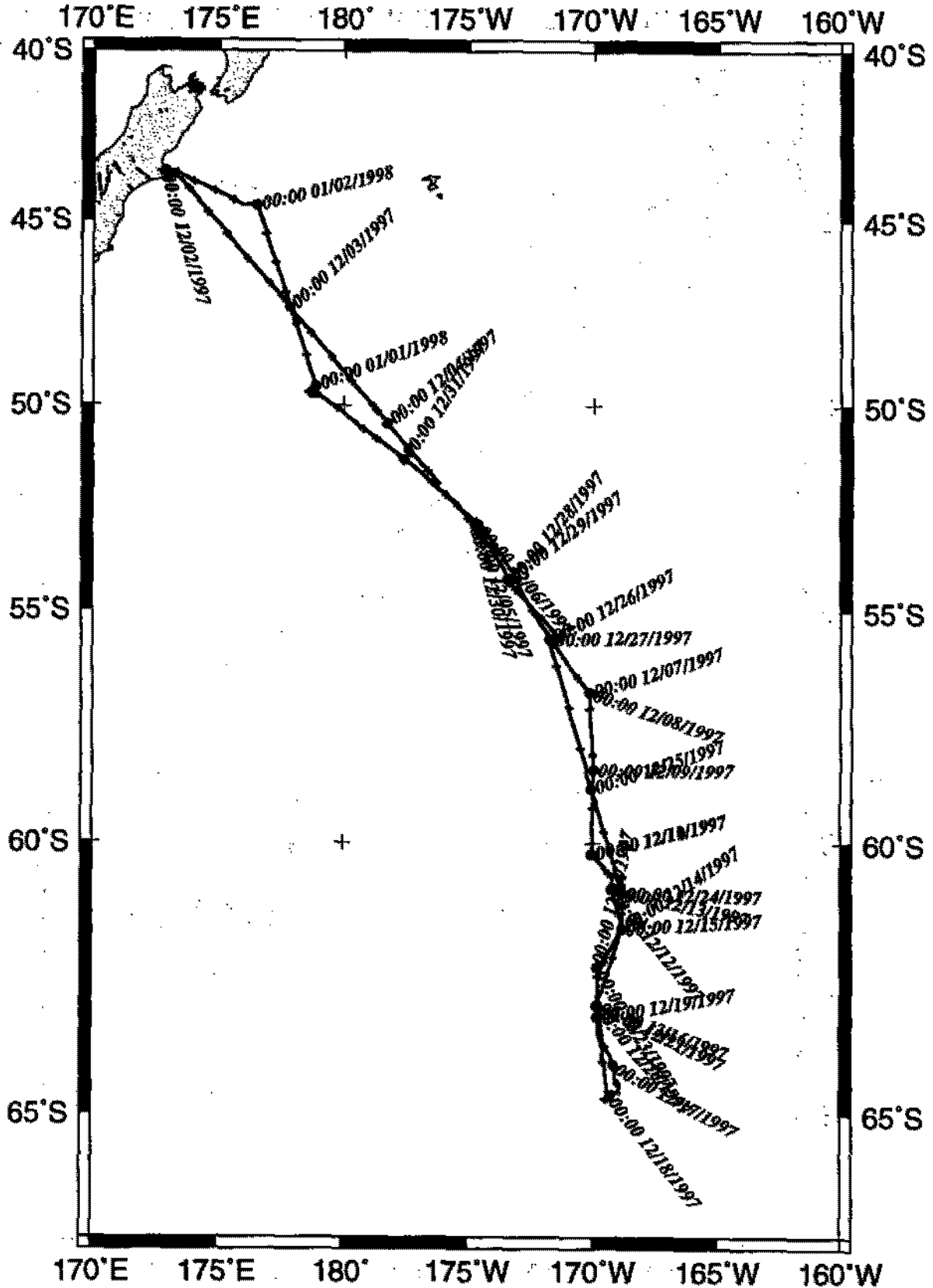
Bathymetry - 792 miles

Seismic Reflection - none collected

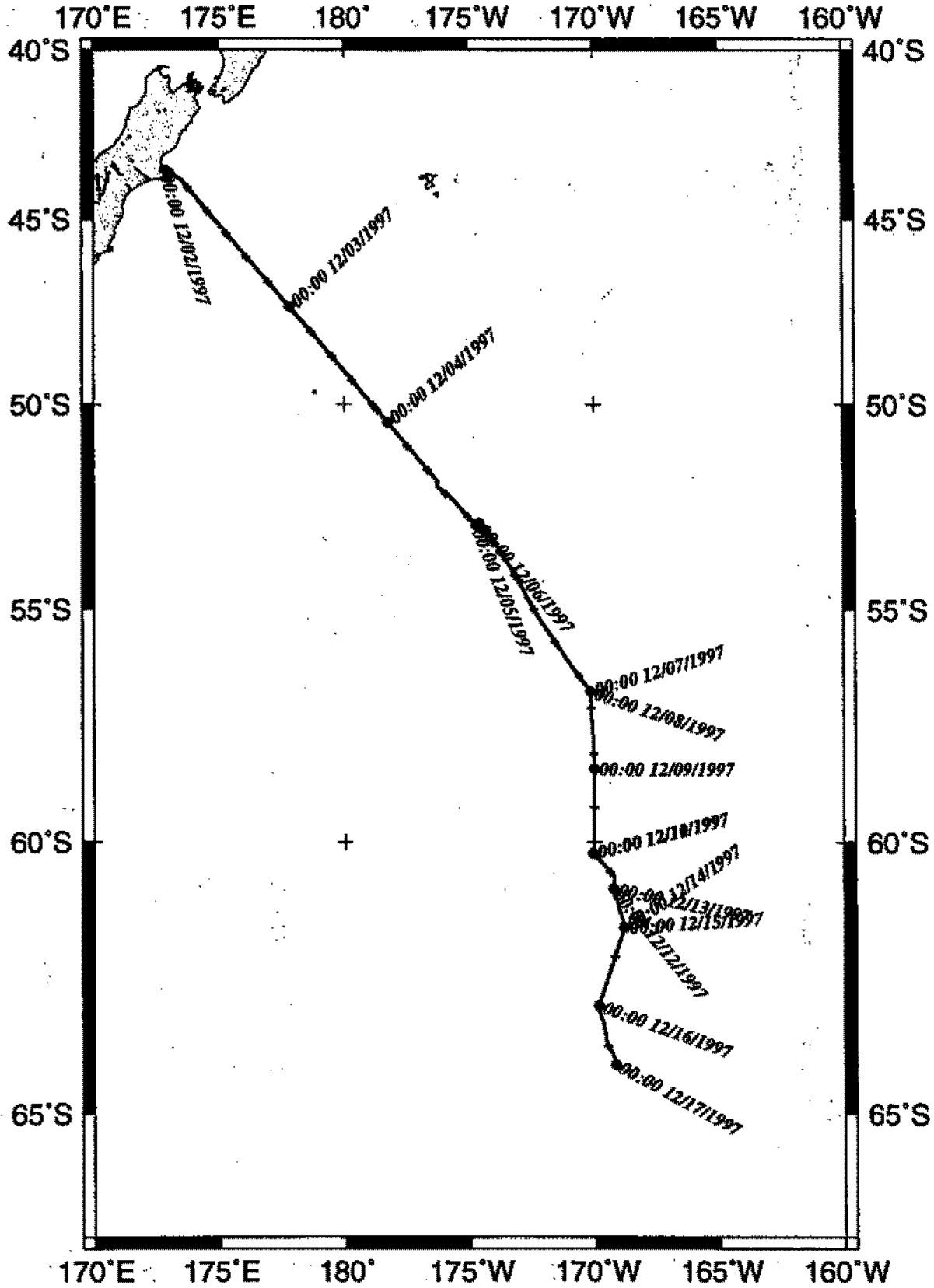
Sea Beam - 792 miles

Gravity - none collected

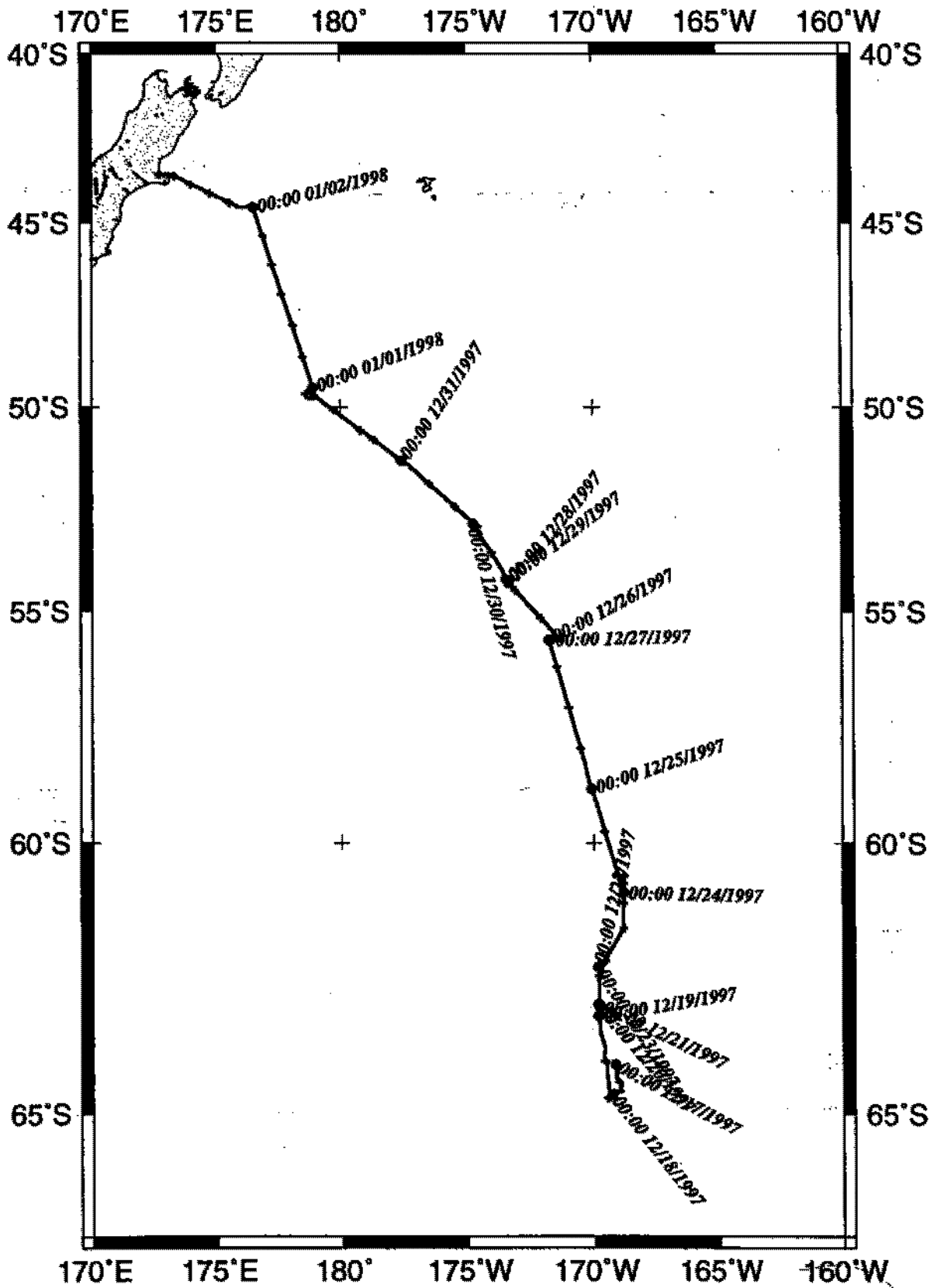
KIWI07RR Track

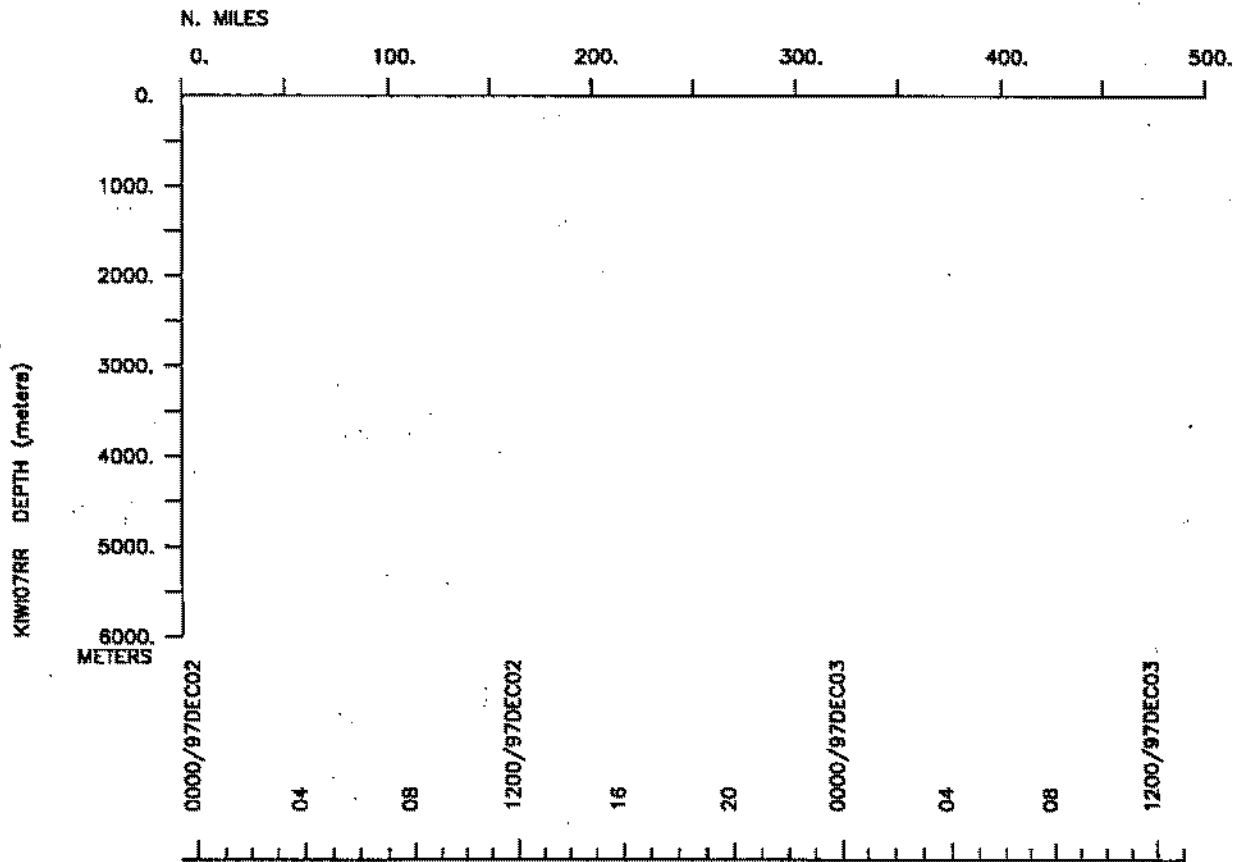
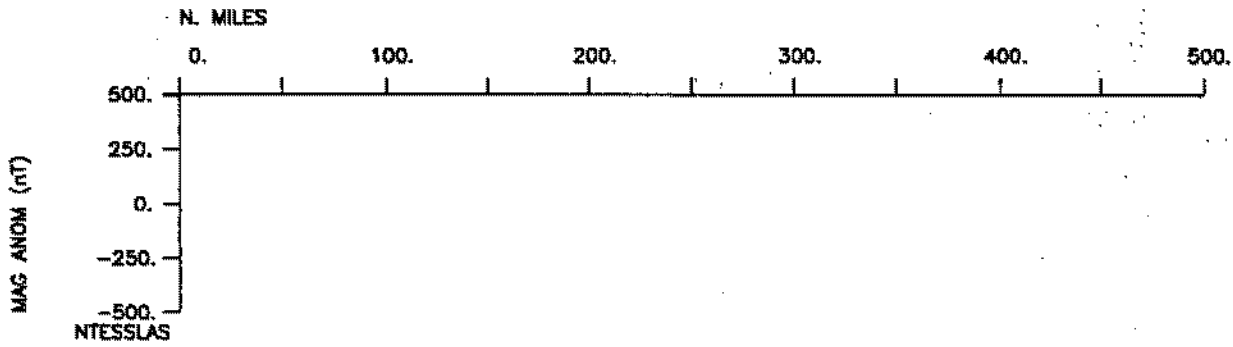
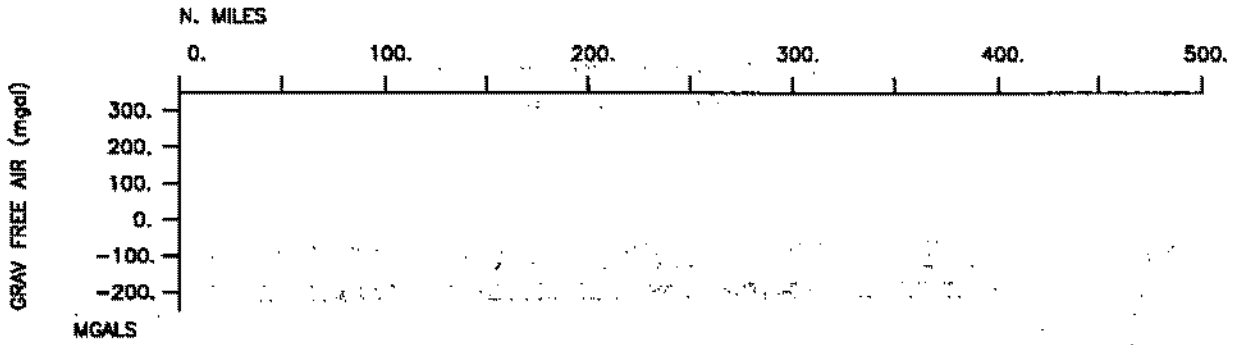


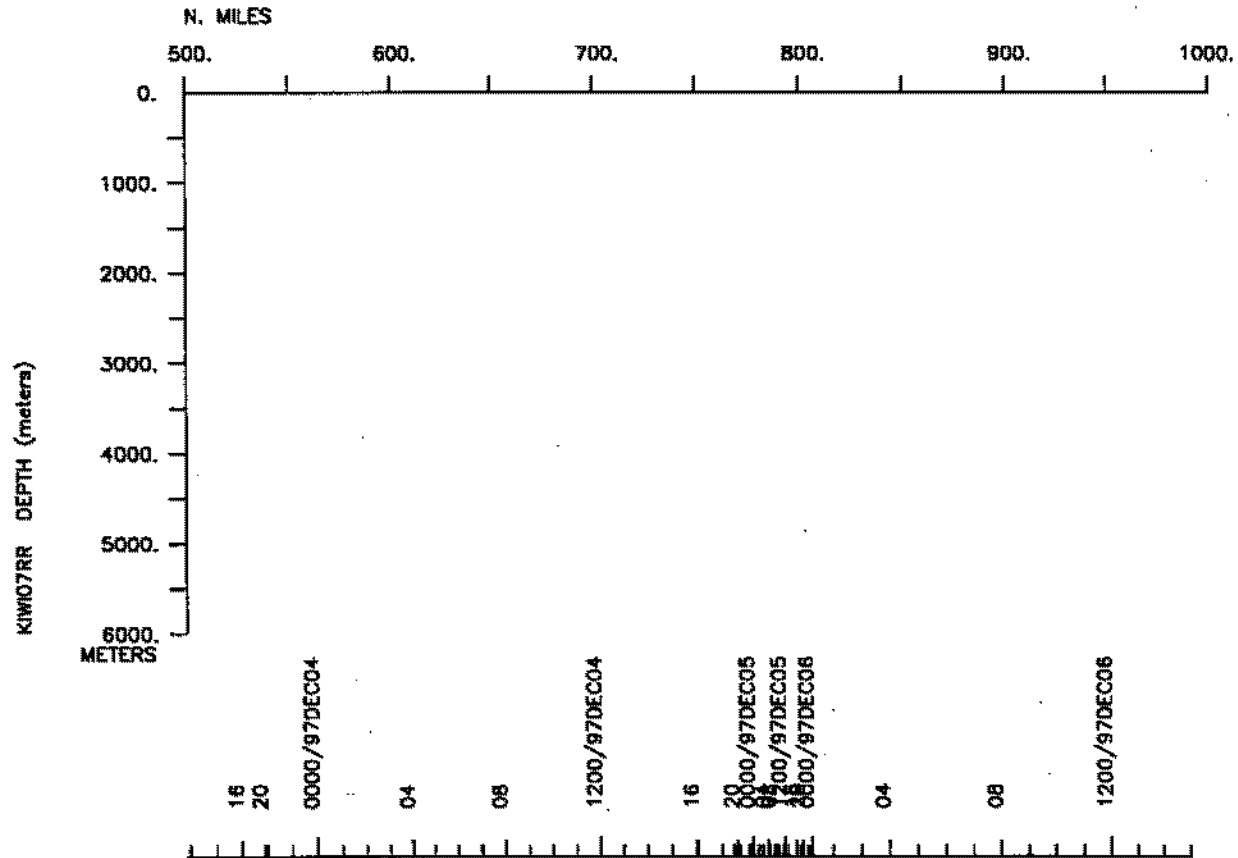
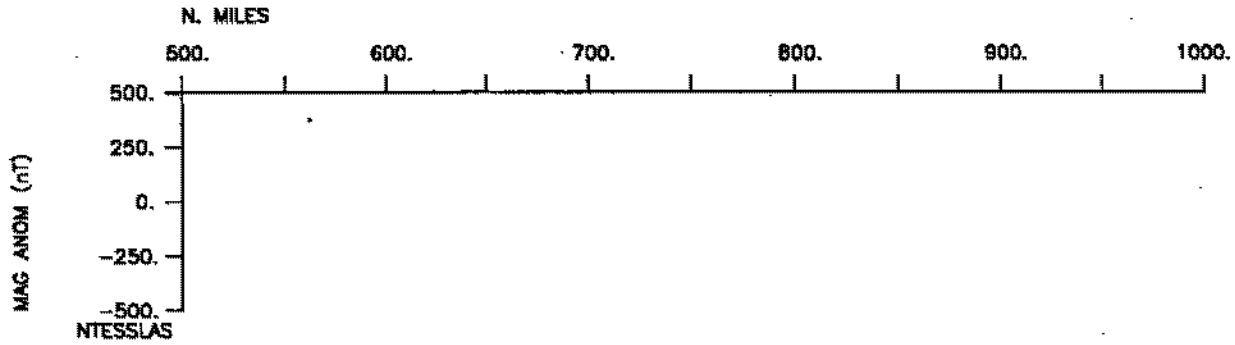
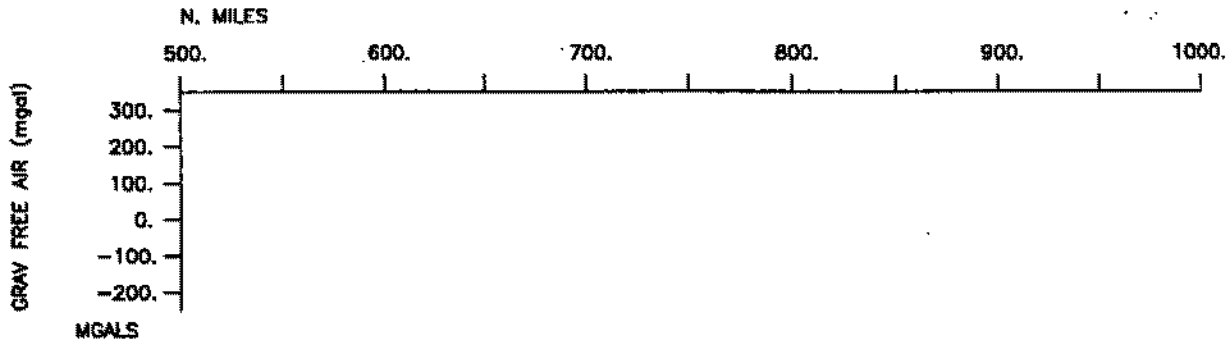
KIWI07RR Begin

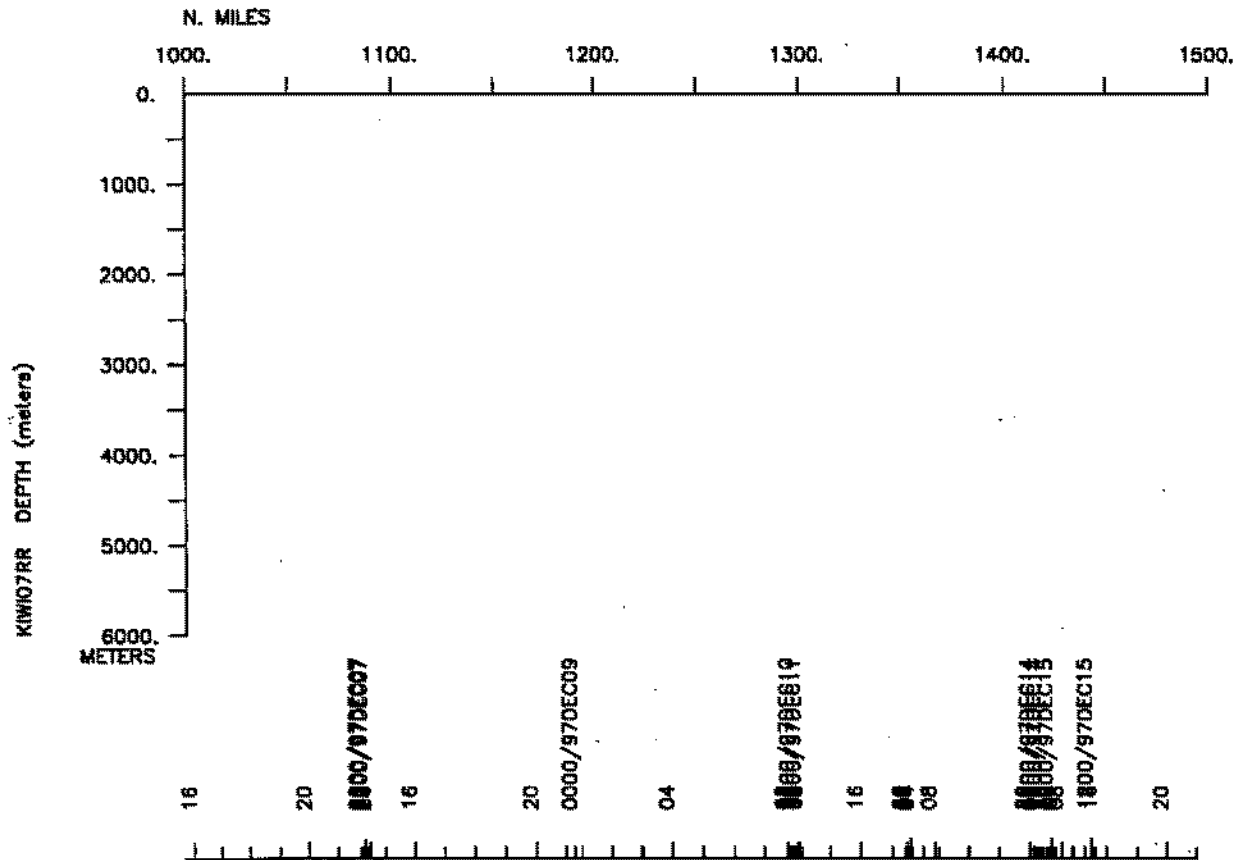
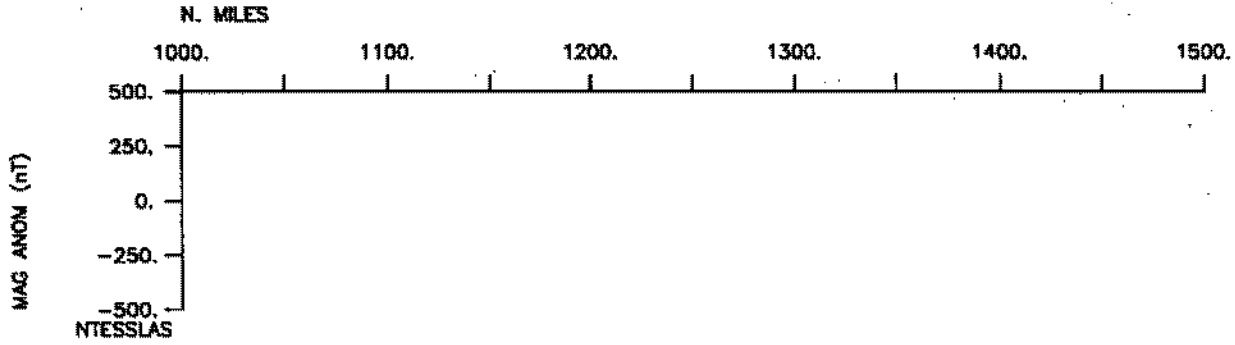
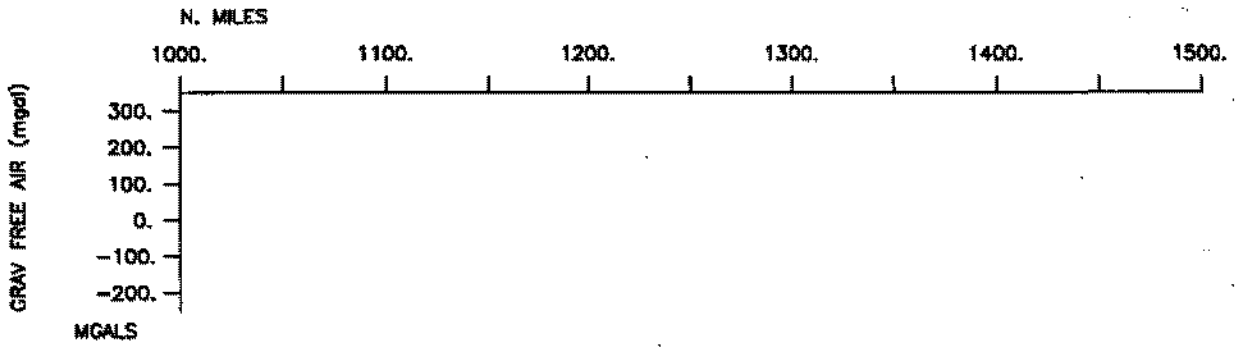


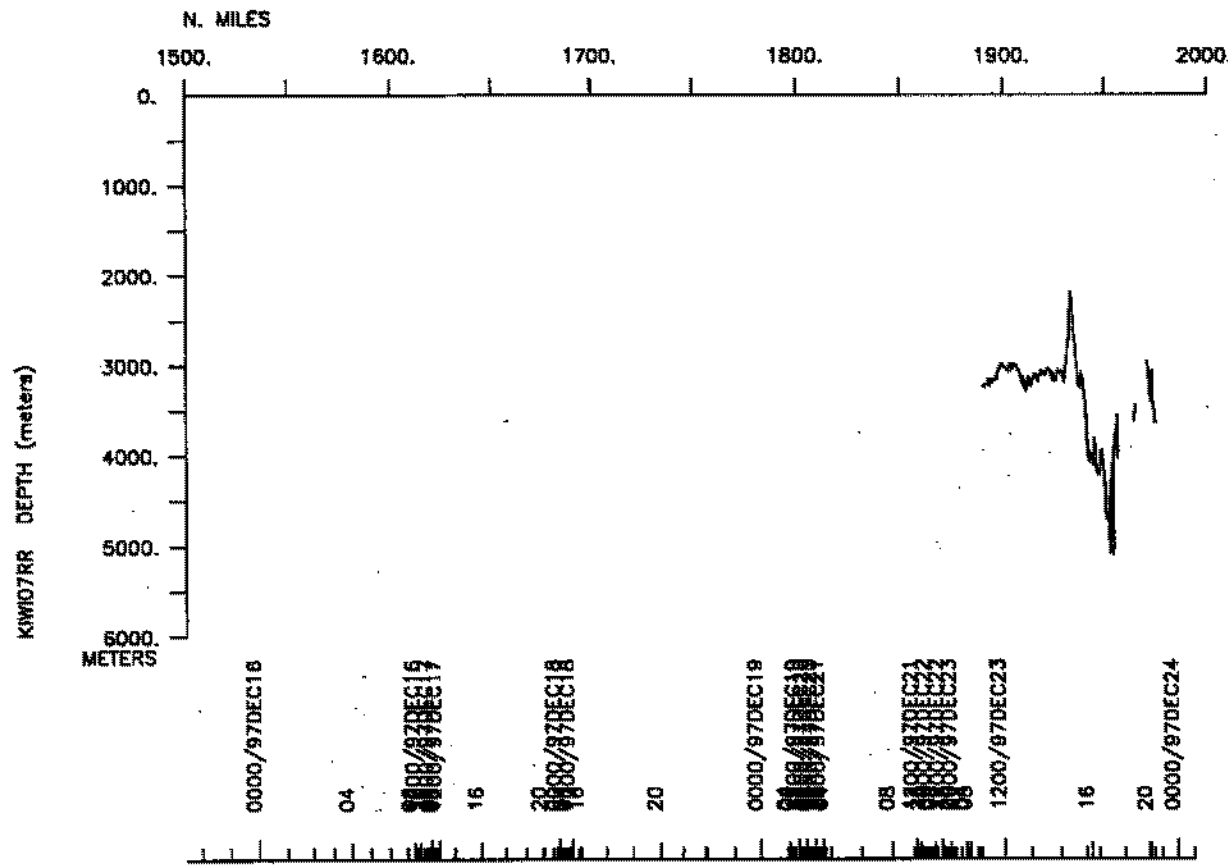
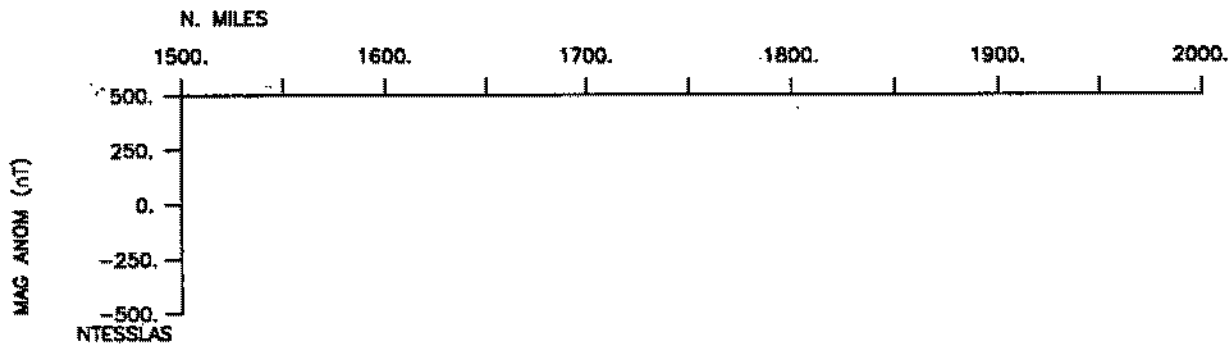
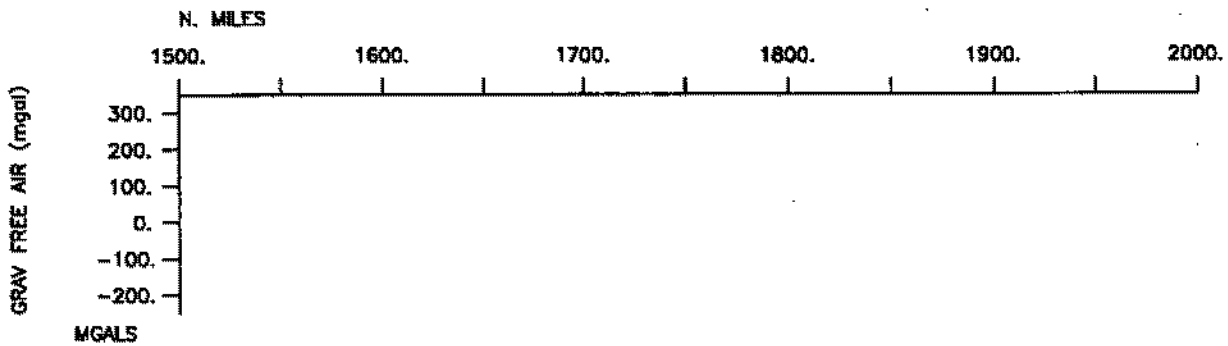
KIWI07RR End

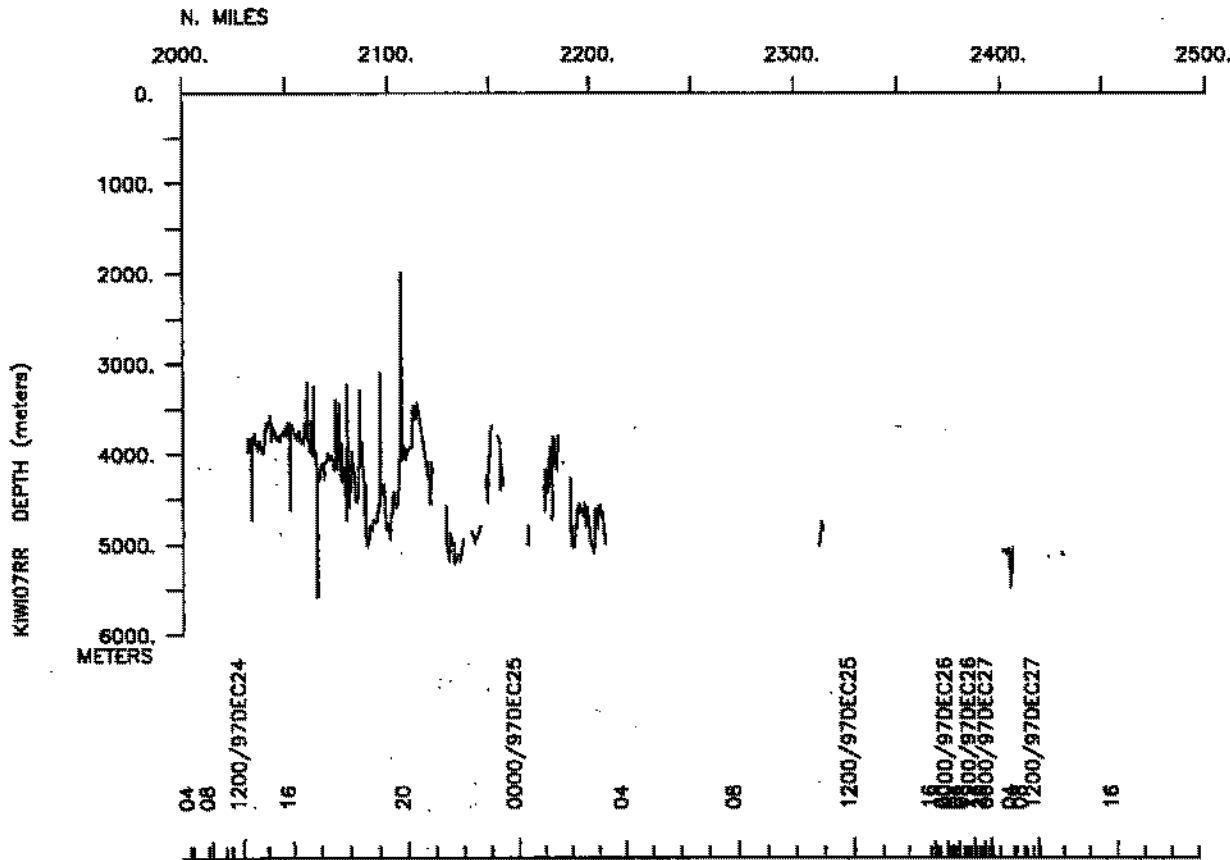
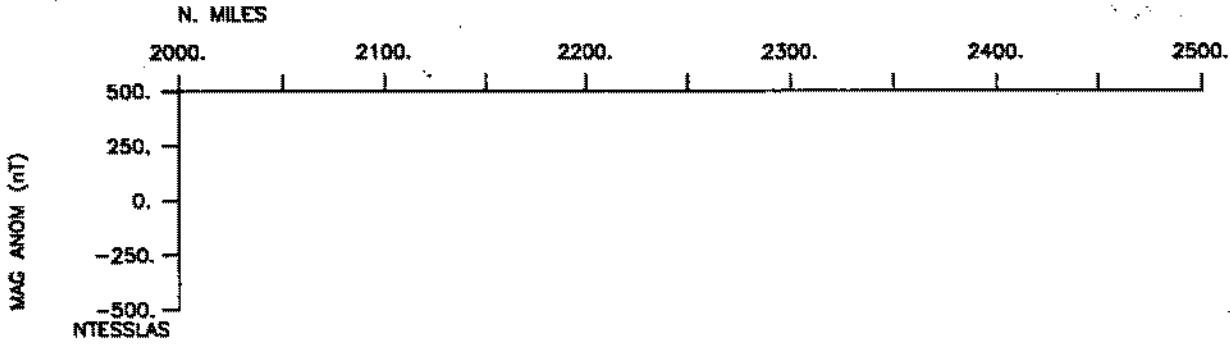
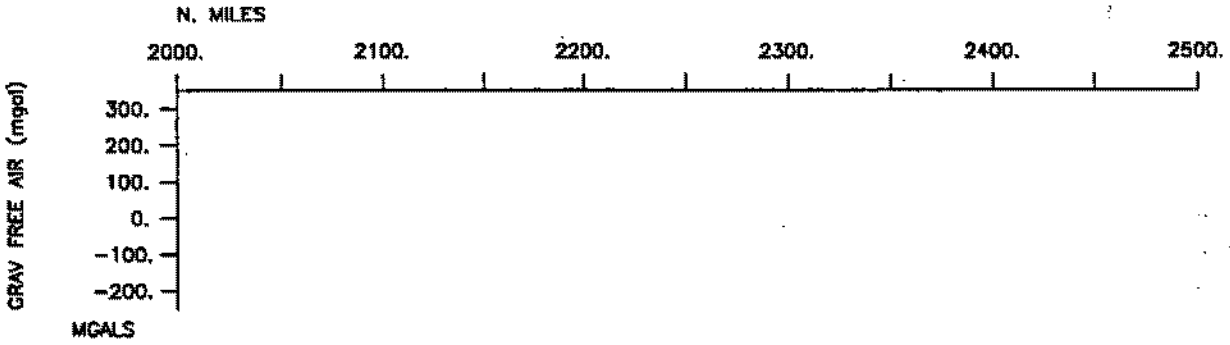


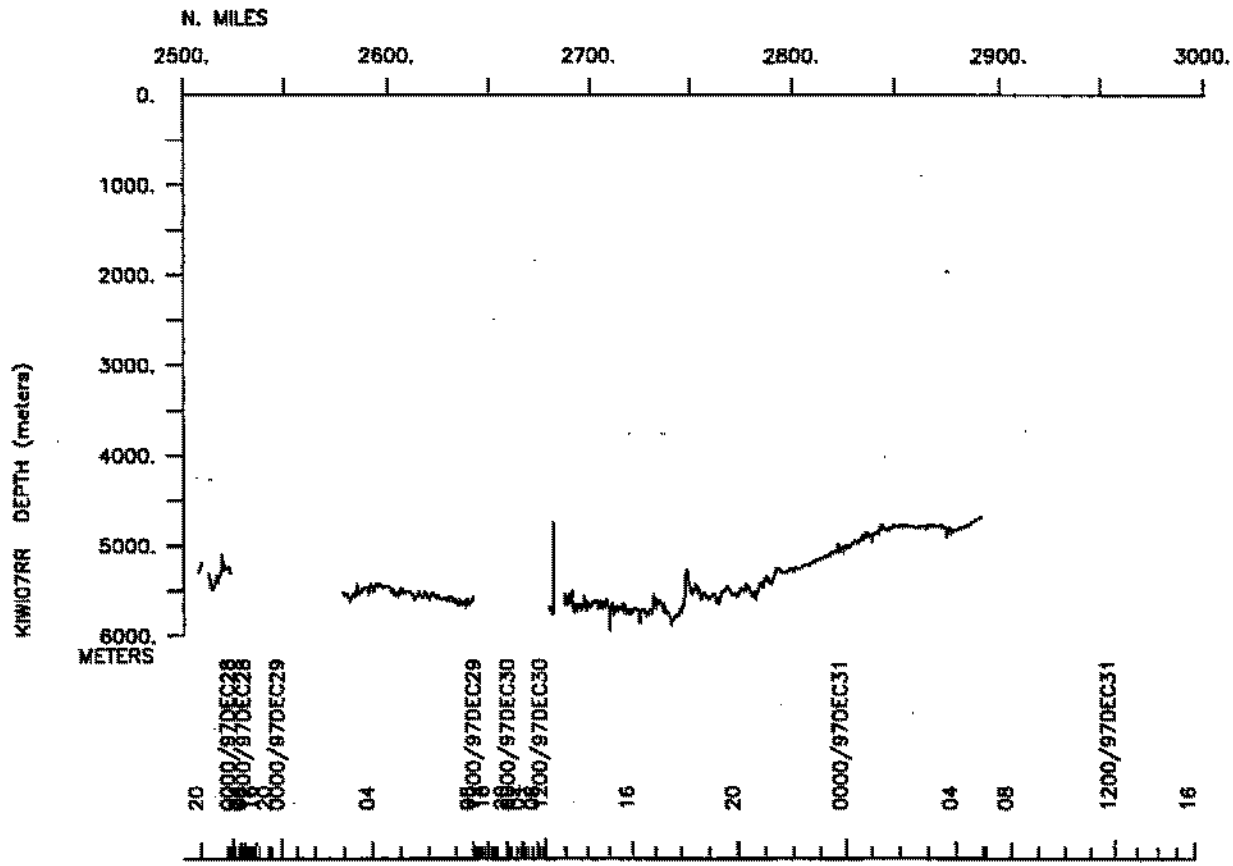
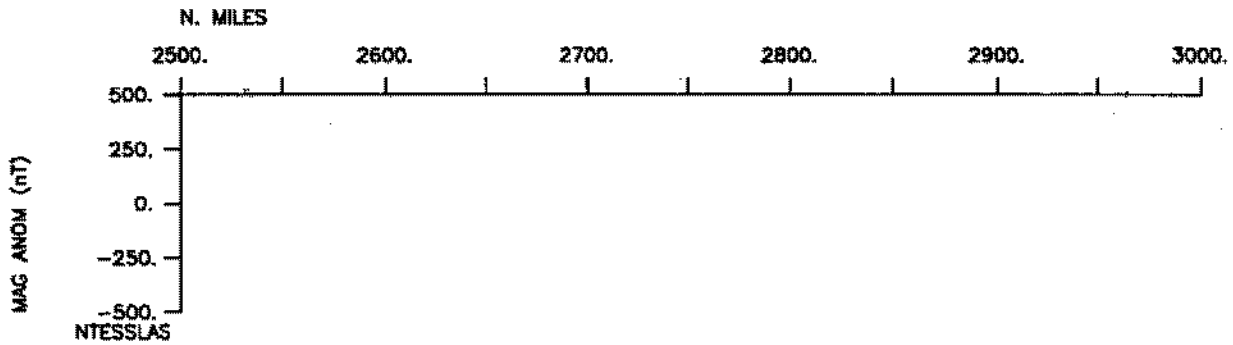
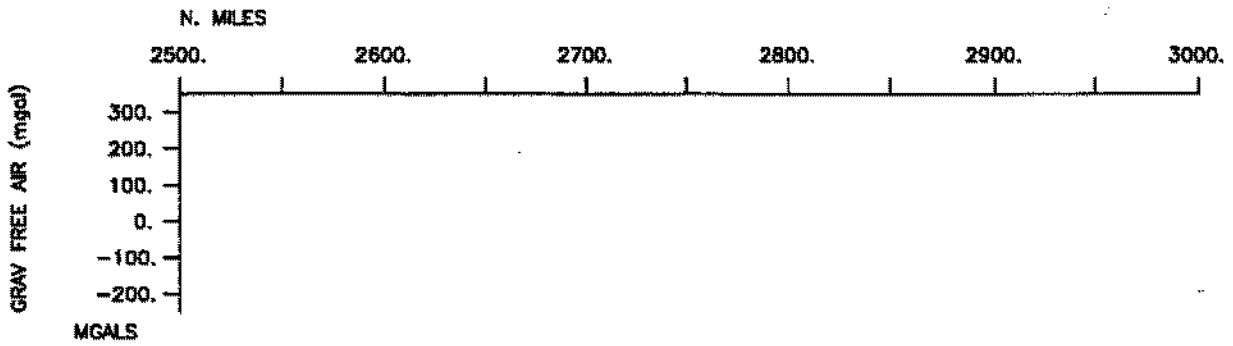


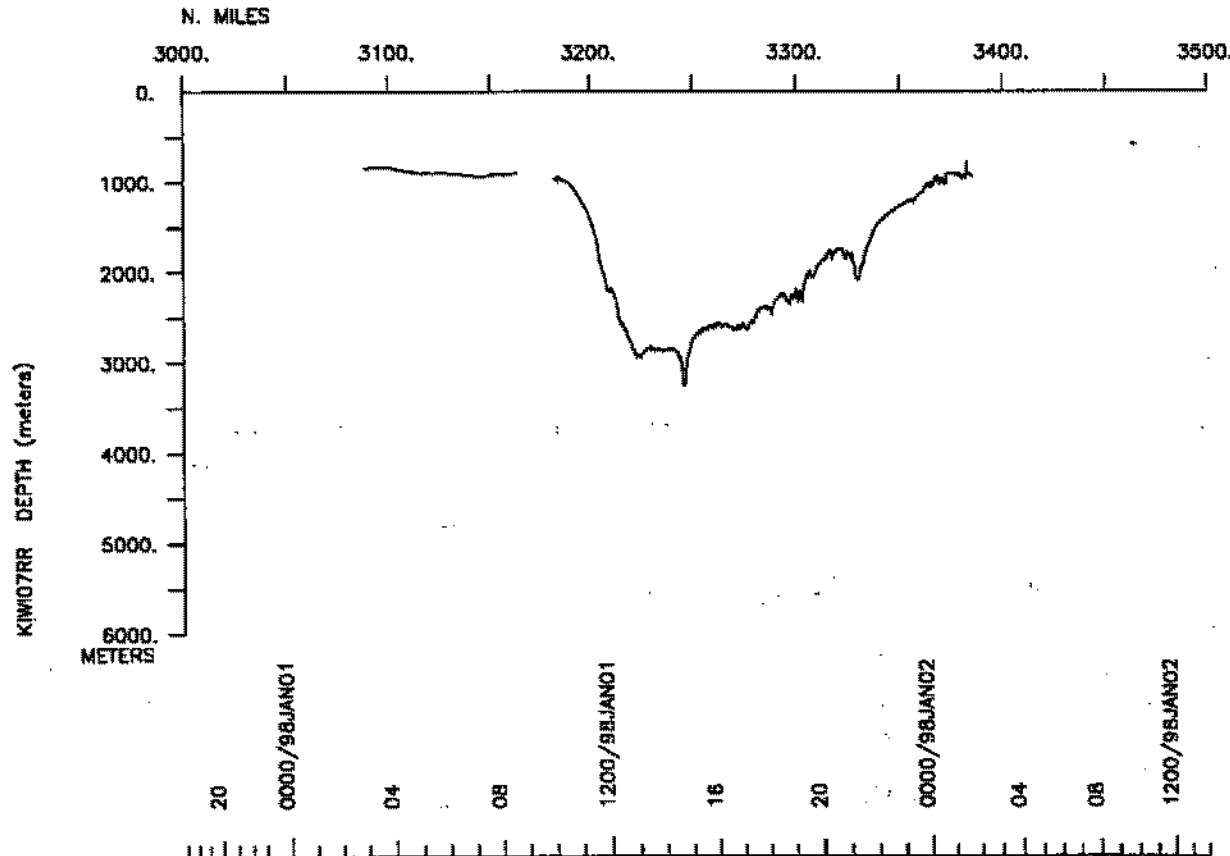
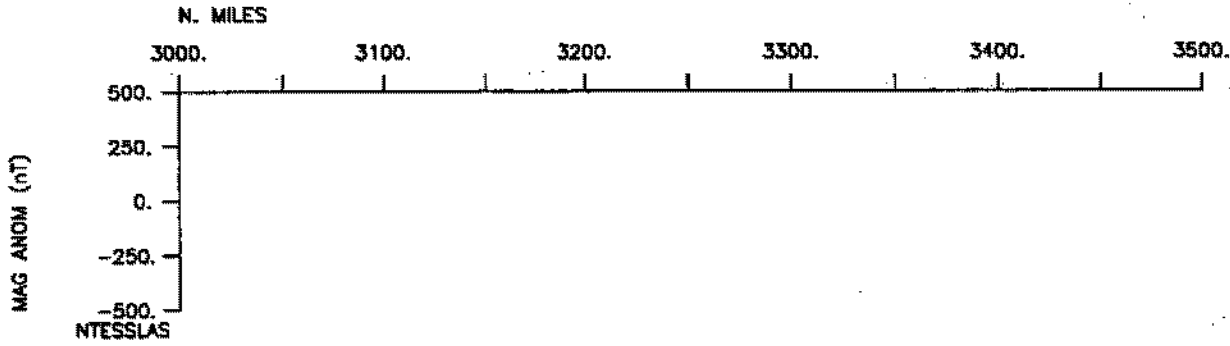
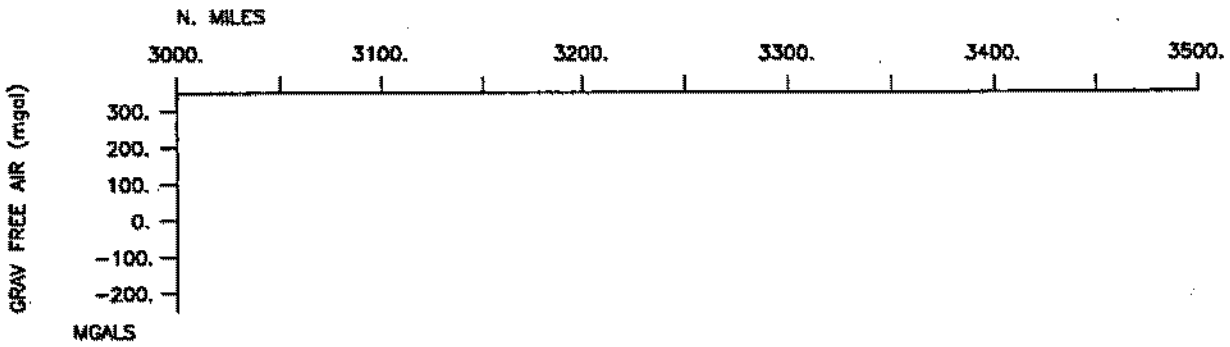


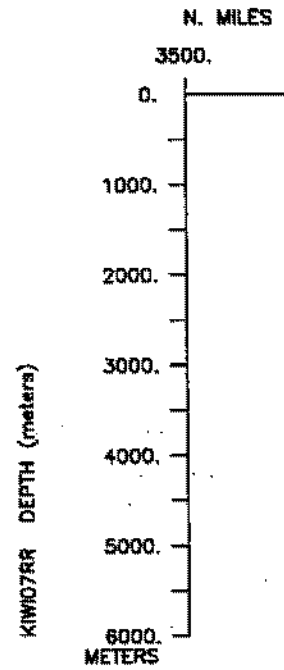
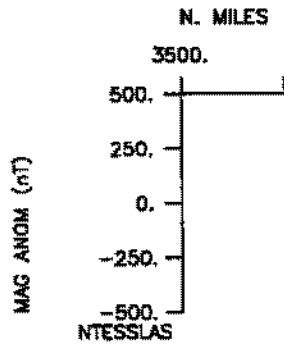
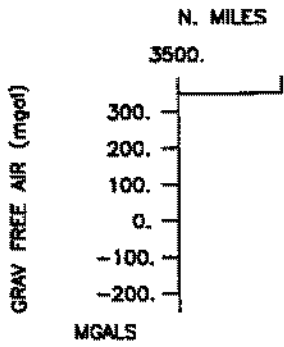












S.I.O. SAMPLE INDEX

KIWI EXPEDITION

LEG 7

(KIWI07RR)

R/V Revelle

(Issued April 1998)

Ports:

Lyttleton, New Zealand (30 November 1997)

to

Lyttleton, New Zealand (3 January 1998)

Chief Scientist:

Richard Barber, Duke University

The Sample Index is a first level interdisciplinary listing of time, position, sample identification and disposition of all samples, records and measurements collected on this cruise leg. The index data are encoded at sea by the resident marine technician and processed on shore by the S.I.O. Geological Data Center shortly after the completion of the cruise leg.

Positions are interpolated on the basis of sample time by comparison to a single, edited navigation file. Samples beginning at one time and position and ending at another are entered on two consecutive lines. Disposition and sample type are represented by three and four character codes to permit future computer searches on these parameters. (Listings defining these codes are available from the Geological Data Center.)

GDC Cruise I.D.# 276

**** Ports ***

```
0300 021297 0 LGPT B LYTTLETON, NEW ZEALAND 43-36.00S 172-43.00E f KIWI07RR
1900 010298 0 LGPT E LYTTLETON, NEW ZEALAND 43-36.00S 172-43.00E f KIWI07RR
```

**** Personnel ***

```
# *****NAME***** *****TITLE***** *****AFFILIATION***** **CRID**
#-----
PECS SIX Barber, Richard Chief Scientist Duke Marine Lab KIWI07RR
PESP UHI Allen, Colleen Research Assoc. Univ. of Hawaii KIWI07RR
PESP SIX Barber, Elaine Research Tech Duke Marine Lab KIWI07RR
PESP SIX Bell, Steve Research Tech Burmuda Bio Sta. KIWI07RR
PESP SIX Borden, Jonathan Technician Duke University KIWI07RR
PESP SIX Borden, Lisa Research Tech Duke University KIWI07RR
PESP UCSB Brzezinski, Mark Scientist UC Santa Barbara KIWI07RR
PESP SIX Codispoti, Louis Scientist Old Dominion Univ. KIWI07RR
PESP URI Dickson, Mary-Lynn Scientist Univ. Rhode Island KIWI07RR
PESP UHI Elliot, Amy Grad Student Univ. of Hawaii KIWI07RR
PESP UHI Fabregat, Albert Post Doctor Univ. of Hawaii KIWI07RR
PEST SIO Fandino, Laura Grad Student UC San Diego KIWI07RR
PESP WHOI Ploor, Allen Research Assoc. Wood Hole O.I. KIWI07RR
PESP SIX Gaurin, Steven Research Tech Old Dominion Univ. KIWI07RR
PESP UWA Grogan, Mike Marine Tech Univ. of Washington KIWI07RR
PESP TAMU Guffy, Dennis Research Tech Texas A&M Univ. KIWI07RR
PESP TAMU Gundersen, Jan Technician Texas A&M Univ. KIWI07RR
PESP STS Hiller, Scott Research Assist. Scripps Institution KIWI07RR
PECT STS Jacobson, Dan Computer Tech Scripps Institution KIWI07RR
PESP UMI Jolliff, Jason Research Assist. Univ. of Miami KIWI07RR
PESP UWA Krogslund, Kathy Research Assist. Univ. of Washington KIWI07RR
PESP WHOI Landry, Peter Electrical Tech Woods Hole O.I. KIWI07RR
PESP LDEO Mace, Bonnie Research Assist. Lamont-Dourthy E.O. KIWI07RR
PESP UHI Measures, Chris Scientist Univ. of Hawaii KIWI07RR
PESP SIX Peterson, Jay Research Assoc. LUMCON KIWI07RR
PERT STS Pillard, Eugene Resident Tech Scripps Institution KIWI07RR
PEST UMI Pierrot, Denis Grad Student Univ. of Miami KIWI07RR
PESP UWA Postel, Jim Research Assoc. Univ. of Washinton KIWI07RR
PESP SIX Quinby, Helen Research Assoc. Virginia Istitute MS KIWI07RR
PESP TAMU Quiroz, Erik Marine Tech Texas A&M KIWI07RR
PESP LDEO Sambrotto, Ray Scientist Lamont Dourthy E.O. KIWI07RR
PESP TAMU Searson, Sarah Technician Texas A & M KIWI07RR
PEST UHI Selph, Karen Grad Student Univ. of Hawaii KIWI07RR
PEST OSU Sigmon, Daniel Grad Student Oregon State Univ. KIWI07RR
PESP URI Sucher, Cara Grad Student Univ. of Rhode Is. KIWI07RR
PESP SIX Urban-Rich, Juanita Scientist LUMCON KIWI07RR
PESP OSU Walsh, Ian Scientist Oregon State Univ. KIWI07RR
```

**** NOTES ***

```
#An 'X' in the (B)egin/(E)nd column following the sample code indicates no
#sample or data recovered. A 'C' indicates continuation of data collection
#from before the beginning or after the end of a particular leg. (Moored
#bottom instruments, for example.) The number appearing in the columns
#between the sample identifier and the disposition code, for many sample
#entries, is the water depth in corrected meters.
```

#GMT	DDMMYY	SAMP	B	SAMPLE	DISP				p	CRUISE
#TIME	DATE	TZ	CODE	E IDENTIFIER	CODE	LATITUDE	LONGITUDE		c	LEG-SHIP
*** Underway Data Curator - S. M. Smith ext. 42752 ***										
*** Log Book (Duke Univ. and Old Dominion Univ.) ***										
0300	021297	0	LBSC	B JOGFS Hydro.Data V.2	SIX	43-55.20S	173-33.84E	g		KIWI07RR
0000	311297	0	LBSC	E JOGFS Hydro.Data V.2	SIX	51-22.67S	177-34.44W	g		KIWI07RR
*** Sea Beam Records (vertical beam and side scan) ***										
*** Digital SeaBeam data only. No analog records were collected on this leg. *										
1145	231297	0	MBSR	B SeaBeam data	GDC	62-20.39S	169-37.06W	g		KIWI07RR
0145	020198	0	MBSR	E SeaBeam data	GDC	44-33.61S	176-03.45E	g		KIWI07RR
*** All Samples are in Chronological Order ***										
*** Open Net samples - ONIM & ONBG - went to LUMCON ***										
*** Conductivity, Temperature, Depth samples - TDCT - went to Old Dominion Uni										
*** Hydro cast samples - HCGF - went to Duke Univ. ***										
*** Plankton samples - PHIS - went to Duke Univ. ***										
0300	021297	0	ASFL	B O2/N2 ratio	URI	43-55.20S	173-33.84E	g		KIWI07RR
0000	311297	0	ASFL	E air samples	URI	51-22.67S	177-34.44W	g		KIWI07RR
0300	021297	0	CSXX	B DO water samples	URI	43-55.20S	173-33.84E	g		KIWI07RR
0000	311297	0	CSXX	E DO water samples	URI	51-22.67S	177-34.44W	g		KIWI07RR
0300	021297	0	ADCP	B Acoustic doppler	GDC	43-55.20S	173-33.84E	g		KIWI07RR
0000	311297	0	ADCP	E current profiler	GDC	51-22.67S	177-34.44W	g		KIWI07RR
1722	031297	0	TDCT	B TSONIC P G B	SIX	50-09.85S	178-39.34W	g		KIWI07RR
1814	031297	0	TDCT	E CTD 24 btl rosette	SIX	50-09.85S	178-39.35W	g		KIWI07RR
1845	031297	0	GCTX	B Thorium Pump Cast	WHOI	50-09.85S	178-39.35W	g		KIWI07RR
1847	031297	0	GCTX	E	WHOI	50-09.85S	178-39.36W	g		KIWI07RR
1935	031297	0	ON1M	B Live tow	SIX	50-09.85S	178-39.35W	g		KIWI07RR
1947	031297	0	ON1M	E vertical tow 200M	SIX	50-09.85S	178-39.35W	g		KIWI07RR
1955	031297	0	ONBG	B Bongo tow	SIX	50-09.85S	178-39.35W	g		KIWI07RR
2005	031297	0	ONBG	E vertical tow 200m	SIX	50-09.85S	178-39.35W	g		KIWI07RR
2043	031297	0	HCGF	B N GH A N15	LDEO	50-09.85S	178-39.35W	g		KIWI07RR
2109	031297	0	HCGF	E Trace metal rosette	LDEO	50-09.85S	178-39.36W	g		KIWI07RR
1752	041297	0	GCTX	B Thorium Pump Cast	WHOI	53-01.79S	174-43.81W	g		KIWI07RR
2127	041297	0	GCTX	E	WHOI	53-00.71S	174-38.17W	g		KIWI07RR
2217	041297	0	TDCT	B TSONIC P G B	SIX	53-01.81S	174-43.78W	g		KIWI07RR
2302	041297	0	TDCT	E CTD 24 btl rosette	SIX	53-01.57S	174-42.82W	g		KIWI07RR
2330	041297	0	HCGF	B N GH A N15	LDEO	53-01.36S	174-41.84W	g		KIWI07RR
0015	051297	0	HCGF	E Trace metal rosette	LDEO	53-01.01S	174-40.45W	g		KIWI07RR
0120	051297	0	ON1M	B Live tow	SIX	53-01.85S	174-43.96W	g		KIWI07RR
0155	051297	0	ON1M	E vertical tow 200M	SIX	53-01.86S	174-43.23W	g		KIWI07RR
0157	051297	0	ON1M	B Live tow	SIX	53-01.88S	174-43.18W	g		KIWI07RR
0215	051297	0	ON1M	E vertical tow 200M	SIX	53-01.85S	174-42.52W	g		KIWI07RR

#GMT	DDMMYY	SAMP	B	SAMPLE	DISP				p	CRUISE
#TIME	DATE	TZ	CODE	E IDENTIFIER	CODE	LATITUDE	LONGITUDE		c	LEG-SHIP
#										
0245	051297	0	ONBG	B Bongo Tow	SIX	53-02.02S	174-41.52W	g		KIWI07RR
0314	051297	0	ONBG	E vertical tow 200M	SIX	53-02.06S	174-40.69W	g		KIWI07RR
0425	051297	0	TDCT	B TSONIC P G B	SIX	53-01.78S	174-43.60W	g		KIWI07RR
0509	051297	0	TDCT	E CTD 24 btl rosette	SIX	53-01.34S	174-42.38W	g		KIWI07RR
0629	051297	0	TDCT	B TSONIC P G B	SIX	53-01.80S	174-43.80W	g		KIWI07RR
0653	051297	0	TDCT	E CTD 24 btl rosette	SIX	53-01.60S	174-43.37W	g		KIWI07RR
0814	051297	0	TDCT	B TSONIC P G B	SIX	53-01.76S	174-43.68W	g		KIWI07RR
1015	051297	0	TDCT	E CTD 24 btl rosette	SIX	53-00.74S	174-40.95W	g		KIWI07RR
1120	051297	0	HCGF	B N GH A N15	LDEO	53-01.84S	174-43.57W	g		KIWI07RR
1250	051297	0	HCGF	E Trace metal rosette	LDEO	53-01.84S	174-41.84W	g		KIWI07RR
1345	051297	0	HCGF	B N GH A N15	LDEO	53-01.61S	174-40.72W	g		KIWI07RR
1415	051297	0	HCGF	E Trace metal rosette	LDEO	53-01.62S	174-40.12W	g		KIWI07RR
1425	051297	0	ONBG	B Bongo Tow	SIX	53-01.60S	174-39.92W	g		KIWI07RR
1522	051297	0	ONBG	E vertical tow 200M	SIX	53-01.60S	174-38.90W	g		KIWI07RR
1613	051297	0	TDCT	B TSONIC P G B	SIX	53-01.78S	174-43.72W	g		KIWI07RR
2100	051297	0	TDCT	E CTD 24 btl rosette	SIX	53-00.58S	174-38.89W	g		KIWI07RR
2220	061297	0	TDCT	B TSONIC P G B	SIX	56-50.66S	170-09.75W	g		KIWI07RR
2236	061297	0	TDCT	E CTD 24 btl rosette	SIX	56-50.66S	170-09.75W	g		KIWI07RR
2338	061297	0	TDCT	B TSONIC P G B	SIX	56-50.66S	170-09.75W	g		KIWI07RR
0032	071297	0	TDCT	E CTD 24 btl rosette	SIX	56-50.66S	170-09.75W	g		KIWI07RR
0050	071297	0	HCGF	B N GH A N15	LDEO	56-50.66S	170-09.75W	g		KIWI07RR
0120	071297	0	HCGF	E Trace metal rosette	LDEO	56-50.66S	170-09.75W	g		KIWI07RR
0140	071297	0	ONBG	B Bongo	SIX	56-50.67S	170-09.75W	g		KIWI07RR
0200	071297	0	ONBG	E vertical tow 200M	SIX	56-50.66S	170-09.75W	g		KIWI07RR
0258	071297	0	GCXX	B Thorium pump cast	WHOI	56-50.60S	170-09.75W	g		KIWI07RR
0619	071297	0	GCXX	E	WHOI	56-50.60S	170-09.75W	g		KIWI07RR
0735	071297	0	ONBG	B Bongo Tow	SIX	56-50.60S	170-09.75W	g		KIWI07RR
0805	071297	0	ONBG	E vertical tow 200M	SIX	56-50.60S	170-09.75W	g		KIWI07RR
1130	071297	0	HCGF	B N GH A N15	LDEO	56-50.60S	170-09.75W	g		KIWI07RR
1155	071297	0	HCGF	E Trace metal rosette	LDEO	56-50.60S	170-09.75W	g		KIWI07RR
1240	071297	0	HCGF	B N GH A N15	LDEO	56-50.60S	170-09.75W	g		KIWI07RR
1313	071297	0	HCGF	E Trace metal rosette	LDEO	56-50.60S	170-09.75W	g		KIWI07RR
1330	071297	0	ONBG	B Bongo	SIX	56-50.61S	170-09.76W	g		KIWI07RR
1400	071297	0	ONBG	E vertical tow 200M	SIX	56-50.60S	170-09.75W	g		KIWI07RR
1459	071297	0	HCGF	B N GH A N15	LDEO	56-50.59S	170-09.74W	g		KIWI07RR
1522	071297	0	HCGF	E Trace metal rosette	LDEO	56-50.61S	170-09.75W	g		KIWI07RR
1639	071297	0	TDXX	B POPS multi-spectral	TAMU	56-50.61S	170-09.75W	g		KIWI07RR
1655	071297	0	TDXX	E attenuation	TAMU	56-50.60S	170-09.75W	g		KIWI07RR

#GMT	DDMMYY	TZ	SAMP	B	E	SAMPLE IDENTIFIER	DISP	LATITUDE	LONGITUDE	p	CRUISE
#	TIME	DATE	CODE				CODE			c	LEG-SHIP
1730	071297	0	TDXX	B		POPS multi-spectral	OSU	56-50.61S	170-09.75W	g	KIWI07RR
1823	071297	0	TDXX	E		attenuation	OSU	56-50.60S	170-09.75W	g	KIWI07RR
1840	071297	0	ONBG	B		Bongo tow	SIX	56-50.60S	170-09.75W	g	KIWI07RR
1913	071297	0	ONBG	E		vertical tow 200m	SIX	56-50.61S	170-09.76W	g	KIWI07RR
2029	071297	0	HCGF	B	N	GH A N15	LDEO	56-50.60S	170-09.75W	g	KIWI07RR
2054	071297	0	HCGF	E		Trace metal rosette	LDEO	56-50.61S	170-09.75W	g	KIWI07RR
2108	071297	0	ONBG	B		Bongo tow	SIX	56-50.61S	170-09.75W	g	KIWI07RR
2140	071297	0	ONBG	E		vertical tow 200m	SIX	56-50.61S	170-09.75W	g	KIWI07RR
2156	071297	0	ONIM	B		Live Net Tow	SIX	56-50.60S	170-09.75W	g	KIWI07RR
2230	071297	0	ONIM	E		vertical tow 200m	SIX	56-50.60S	170-09.76W	g	KIWI07RR
2309	071297	0	TDCT	B		TSONIC P G B	SIX	56-50.60S	170-09.75W	g	KIWI07RR
0230	081297	0	TDCT	E		CTD 24 btl rosette	SIX	56-50.60S	170-09.75W	g	KIWI07RR
0545	081297	0	TDXX	B		POPS multi-spectral	TAMU	56-50.60S	170-09.75W	g	KIWI07RR
0707	081297	0	TDXX	E		attenuation	TAMU	56-50.60S	170-09.75W	g	KIWI07RR
0858	081297	0	TDCT	B		TSONIC P G B	SIX	56-50.60S	170-09.75W	g	KIWI07RR
0943	081297	0	TDCT	E		CTD 24 btl rosette	SIX	56-50.60S	170-09.75W	g	KIWI07RR
1002	081297	0	ONIM	B		Live Net Tow	SIX	56-50.60S	170-09.75W	g	KIWI07RR
1035	081297	0	ONIM	E		vertical tow 200m	SIX	56-50.60S	170-09.75W	g	KIWI07RR
1040	081297	0	ONBG	B		Bongo tow	SIX	56-50.60S	170-09.75W	g	KIWI07RR
1111	081297	0	ONBG	E		vertical tow 200m	SIX	56-50.60S	170-09.75W	g	KIWI07RR
1215	081297	0	TDCT	B		TSONIC P G B	SIX	56-50.60S	170-09.75W	g	KIWI07RR
1409	081297	0	TDCT	E		CTD 24 btl rosette	SIX	56-50.60S	170-09.75W	g	KIWI07RR
2137	081297	0	TDCT	B		TSONIC P G B	SIX	58-30.00S	170-00.01W	g	KIWI07RR
2242	081297	0	TDCT	E		CTD 24 btl rosette	SIX	58-30.00S	170-00.00W	g	KIWI07RR
2310	081297	0	TDXX	B		POPS multi-spectral	OSU	58-30.00S	170-00.00W	g	KIWI07RR
0030	091297	0	TDXX	E		attenuation	OSU	58-30.00S	170-00.00W	g	KIWI07RR
0753	091297	0	TDCT	B		TSONIC P G B	SIX	60-13.88S	170-03.54W	g	KIWI07RR
0945	091297	0	TDCT	E		CTD 24 btl rosette	SIX	60-13.88S	170-03.47W	g	KIWI07RR
1055	091297	0	ONIM	B		Live tow	SIX	60-13.88S	170-03.46W	g	KIWI07RR
1120	091297	0	ONIM	E		vertical tow 200M	SIX	60-13.88S	170-03.47W	g	KIWI07RR
1130	091297	0	ONIM	B		Live tow	SIX	60-13.88S	170-03.46W	g	KIWI07RR
1145	091297	0	ONIM	E		vertical tow 200M	SIX	60-13.88S	170-03.46W	g	KIWI07RR
1155	091297	0	ONIM	B		Live tow	SIX	60-13.94S	170-03.52W	g	KIWI07RR
1215	091297	0	ONIM	E		vertical tow 200M	SIX	60-14.08S	170-04.17W	g	KIWI07RR
1220	091297	0	ONBG	B		Bongo tow	SIX	60-13.98S	170-04.09W	g	KIWI07RR
1255	091297	0	ONBG	E		vertical tow 200m	SIX	60-13.89S	170-04.04W	g	KIWI07RR
1340	091297	0	TDCT	B		TSONIC P G B	SIX	60-13.89S	170-04.04W	g	KIWI07RR
1415	091297	0	TDCT	E		CTD 24 btl rosette	SIX	60-13.89S	170-04.04W	g	KIWI07RR
1646	091297	0	TDXX	B		POPS multi-spectral	OSU	60-13.89S	170-04.04W	g	KIWI07RR
1826	091297	0	TDXX	E		attenuation	OSU	60-13.89S	170-04.05W	g	KIWI07RR

#GMT	DDMMYY	SAMP	B	SAMPLE	DISP				p	CRUISE
#TIME	DATE	TZ	CODE	E IDENTIFIER	CODE	LATITUDE	LONGITUDE		c	LEG-SHIP
#										
1912	091297	0	TDCT	B TSONIC P G	B SIX	60-13.89S	170-04.04W	g		KIWI07RR
1955	091297	0	TDCT	E CTD 24 btl rosette	SIX	60-13.89S	170-04.04W	g		KIWI07RR
2153	091297	0	TDCT	B TSONIC P G	B SIX	60-13.90S	170-04.06W	g		KIWI07RR
2236	091297	0	TDCT	E CTD 24 btl rosette	SIX	60-13.89S	170-04.04W	g		KIWI07RR
2325	091297	0	HCGF	B N GH A N15	LDEO	60-13.92S	170-04.09W	g		KIWI07RR
2350	091297	0	HCGF	E Trace metal rosette	LDEO	60-13.97S	170-04.18W	g		KIWI07RR
0014	101297	0	ON1M	B Live tow	SIX	60-13.88S	170-04.13W	g		KIWI07RR
0050	101297	0	ON1M	E vertical tow 200M	SIX	60-13.88S	170-04.16W	g		KIWI07RR
0055	101297	0	ONBG	B Bongo tow	SIX	60-13.88S	170-04.16W	g		KIWI07RR
0125	101297	0	ONBG	E vertical tow 200m	SIX	60-13.88S	170-04.15W	g		KIWI07RR
0308	101297	0	TDXX	B POPS multi-spectral	OSU	60-13.88S	170-04.16W	g		KIWI07RR
0421	101297	0	TDXX	E attenuation	OSU	60-13.89S	170-04.15W	g		KIWI07RR
0506	101297	0	TDCT	B TSONIC P G	B SIX	60-13.85S	170-04.23W	g		KIWI07RR
0552	101297	0	TDCT	E CTD 24 btl rosette	SIX	60-13.85S	170-04.22W	g		KIWI07RR
0611	101297	0	GCXX	B Thorium pump cast	WHOI	60-13.84S	170-04.28W	g		KIWI07RR
0918	101297	0	GCXX	E	WHOI	60-13.87S	170-04.19W	g		KIWI07RR
1521	101297	0	HCGF	B N GH A N15	LDEO	60-13.85S	170-04.23W	g		KIWI07RR
1613	101297	0	HCGF	E Trace metal rosette	LDEO	60-13.85S	170-04.23W	g		KIWI07RR
1813	101297	0	TDXX	B POPS multi-spectral	TAMU	60-13.85S	170-04.23W	g		KIWI07RR
2006	101297	0	TDXX	E attenuation	TAMU	60-13.85S	170-04.23W	g		KIWI07RR
2108	101297	0	TDCT	B TSONIC P G	B SIX	60-13.85S	170-04.24W	g		KIWI07RR
2203	101297	0	TDCT	E CTD 24 btl rosette	SIX	60-13.85S	170-04.23W	g		KIWI07RR
2230	101297	0	ON1M	B Live Net	SIX	60-13.85S	170-04.24W	g		KIWI07RR
2305	101297	0	ON1M	E vertical tow 200M	SIX	60-13.85S	170-04.24W	g		KIWI07RR
2310	101297	0	ON1M	B Live tow	SIX	60-13.85S	170-04.24W	g		KIWI07RR
2340	101297	0	ON1M	E vertical tow 200M	SIX	60-13.84S	170-04.24W	g		KIWI07RR
2350	101297	0	ONBG	B Bongo tow	SIX	60-13.85S	170-04.23W	g		KIWI07RR
0025	111297	0	ONBG	E vertical tow 200m	SIX	60-13.84S	170-04.24W	g		KIWI07RR
0059	111297	0	TDCT	B TSONIC P G	B SIX	60-13.81S	170-04.25W	g		KIWI07RR
0138	111297	0	TDCT	E CTD 24 btl rosette	SIX	60-13.80S	170-04.28W	g		KIWI07RR
0244	111297	0	TDCT	B TSONIC P G	B SIX	60-13.80S	170-04.28W	g		KIWI07RR
0620	111297	0	TDCT	E CTD 24 btl rosette	SIX	60-13.80S	170-04.28W	g		KIWI07RR
0641	111297	0	TDXX	B POPS multi-spectral	OSU	60-13.80S	170-04.28W	g		KIWI07RR
0810	111297	0	TDXX	E attenuation	OSU	60-13.80S	170-04.28W	g		KIWI07RR
0903	111297	0	ON1M	B Live Net Tow	SIX	60-13.80S	170-04.28W	g		KIWI07RR
0934	111297	0	ON1M	E vertical tow 200m	SIX	60-13.80S	170-04.28W	g		KIWI07RR
0937	111297	0	ON1M	B Live Net	SIX	60-13.80S	170-04.27W	g		KIWI07RR
0955	111297	0	ON1M	E vertical tow 200m	SIX	60-13.80S	170-04.28W	g		KIWI07RR
1001	111297	0	ONBG	B Bongo Tow	SIX	60-13.80S	170-04.28W	g		KIWI07RR
1033	111297	0	ONBG	E vertical tow 200m	SIX	60-13.80S	170-04.28W	g		KIWI07RR

#GMT	DDMMYY	SAMP	B	SAMPLE	DISP				p	CRUISE
#TIME	DATE	TZ	CODE	E IDENTIFIER	CODE	LATITUDE	LONGITUDE		c	LEG-SHIP
#										
1105	111297	0	TDCT	B TSONIC P G	B SIX	60-13.80S	170-04.28W	g		KIWI07RR
1145	111297	0	TDCT	E CTD 24 btl rosette	SIX	60-13.80S	170-04.28W	g		KIWI07RR
0115	111297	0	HCGF	B N GH A N15	LDEO	60-13.80S	170-04.28W	g		KIWI07RR
1240	111297	0	HCGF	E Trace metal rosette	LDEO	60-13.80S	170-04.28W	g		KIWI07RR
1317	111297	0	HCGF	B N GH A N15	LDEO	60-13.80S	170-04.28W	g		KIWI07RR
1345	111297	0	HCGF	E Trace metal rosette	LDEO	60-13.80S	170-04.28W	g		KIWI07RR
1816	111297	0	TDXX	B POPS multi-spectral	TAMU	60-54.99S	169-15.13W	g		KIWI07RR
2028	111297	0	TDXX	E attenuation	TAMU	60-54.99S	169-15.13W	g		KIWI07RR
2135	111297	0	TDCT	B TSONIC P G	B SIX	60-54.99S	169-15.13W	g		KIWI07RR
2218	111297	0	TDCT	E CTD 24 btl rosette	SIX	60-54.99S	169-15.13W	g		KIWI07RR
2310	111297	0	ON1M	B Live tow	SIX	60-54.99S	169-15.13W	g		KIWI07RR
2350	111297	0	ON1M	E vertical tow 200M	SIX	60-54.99S	169-15.13W	g		KIWI07RR
2355	111297	0	ONBG	B Bongo tow	SIX	60-54.99S	169-15.14W	g		KIWI07RR
0025	121297	0	ONBG	E vertical tow 200m	SIX	60-54.99S	169-15.13W	g		KIWI07RR
0058	121297	0	HCGF	B N GH A N15	LDEO	60-54.98S	169-15.13W	g		KIWI07RR
0115	121297	0	HCGF	E Trace metal rosette	LDEO	60-54.99S	169-15.13W	g		KIWI07RR
0251	121297	0	HCGF	B N GH A N15	LDEO	60-54.99S	169-15.13W	g		KIWI07RR
0315	121297	0	HCGF	E Trace metal rosette	LDEO	60-54.99S	169-15.13W	g		KIWI07RR
0349	121297	0	TDXX	B POPS multi-spectral	OSU	60-54.99S	169-15.13W	g		KIWI07RR
0522	121297	0	TDXX	E attenuation	OSU	60-54.99S	169-15.13W	g		KIWI07RR
0547	121297	0	GCXX	B Thorium pump cast	WHOI	60-54.99S	169-15.13W	g		KIWI07RR
0915	121297	0	GCXX	E	WHOI	60-54.99S	169-15.13W	g		KIWI07RR
1006	121297	0	HCGF	B N GH A N15	LDEO	60-54.99S	169-15.13W	g		KIWI07RR
1027	121297	0	HCGF	E Trace metal rosette	LDEO	60-54.99S	169-15.13W	g		KIWI07RR
1105	121297	0	HCGF	B N GH A N15	LDEO	60-54.99S	169-15.13W	g		KIWI07RR
1130	121297	0	HCGF	E Trace metal rosette	LDEO	60-54.99S	169-15.13W	g		KIWI07RR
1350	121297	0	PHIS	B Free floating array	SIX	60-55.00S	169-15.04W	g		KIWI07RR
0715	131297	0	PHIS	E primary production	SIX	60-57.34S	169-06.32W	g		KIWI07RR
1517	121297	0	TDXX	B POPS multi-spectral	TAMU	60-54.99S	169-15.19W	g		KIWI07RR
1653	121297	0	TDXX	E attenuation	TAMU	60-54.99S	169-15.18W	g		KIWI07RR
1711	121297	0	TDCT	B TSONIC P G	B SIX	60-54.99S	169-15.13W	g		KIWI07RR
1900	121297	0	TDCT	E CTD 24 btl rosette	SIX	60-54.99S	169-15.13W	g		KIWI07RR
2206	121297	0	HCGF	B N GH A N15	LDEO	60-54.99S	169-15.13W	g		KIWI07RR
2229	121297	0	HCGF	E Trace metal rosette	LDEO	60-54.99S	169-15.13W	g		KIWI07RR
2302	121297	0	ON1M	B Live tow	SIX	60-54.99S	169-15.12W	g		KIWI07RR
2345	121297	0	ON1M	E vertical tow 200M	SIX	60-54.99S	169-15.12W	g		KIWI07RR
2347	121297	0	ON1M	B Live tow	SIX	60-54.99S	169-15.13W	g		KIWI07RR
2355	121297	0	ON1M	E vertical tow 200M	SIX	60-54.99S	169-15.13W	g		KIWI07RR

#GMT	DDMMYY	SAMP	B	SAMPLE	DISP				p	CRUISE
#TIME	DATE	TZ	CODE	E IDENTIFIER	CODE	LATITUDE	LONGITUDE		c	LEG-SHIP
#										
0005	131297	0	ONBG	B Bongo tow	SIX	60-54.99S	169-15.13W	g		KIWI07RR
0035	131297	0	ONBG	E vertical tow 200m	SIX	60-54.99S	169-15.13W	g		KIWI07RR
0059	131297	0	ONBG	B Bongo tow	SIX	60-54.99S	169-15.13W	g		KIWI07RR
0106	131297	0	ONBG	E vertical tow 200m	SIX	60-54.99S	169-15.13W	g		KIWI07RR
0215	131297	0	TDCT	B TSONIC P G B	SIX	60-54.99S	169-15.13W	g		KIWI07RR
0252	131297	0	TDCT	E CTD 24 btl rosette	SIX	60-54.99S	169-15.14W	g		KIWI07RR
0406	131297	0	TDXX	B POPS multi-spectral	OSU	60-54.99S	169-15.13W	g		KIWI07RR
0554	131297	0	TDXX	E attenuation	OSU	60-54.99S	169-15.13W	g		KIWI07RR
0900	131297	0	ON1M	B Live Net Tow	SIX	60-54.99S	169-15.13W	g		KIWI07RR
0936	131297	0	ON1M	E vertical tow 200M	SIX	60-54.99S	169-15.13W	g		KIWI07RR
0941	131297	0	ONBG	B Bongo Tow	SIX	60-54.99S	169-15.13W	g		KIWI07RR
1015	131297	0	ONBG	E vertical tow 200M	SIX	60-54.99S	169-15.13W	g		KIWI07RR
1300	121297	0	PHIS	B Free floating array	SIX	60-54.99S	169-15.13W	g		KIWI07RR
0715	131297	0	PHIS	E primary production	SIX	60-57.34S	169-06.32W	g		KIWI07RR
1050	131297	0	HCGF	B N GH A N15	LDEO	60-54.99S	169-15.13W	g		KIWI07RR
1210	131297	0	HCGF	E Trace metal rosette	LDEO	60-54.99S	169-15.13W	g		KIWI07RR
1215	131297	0	TDCT	B TSONIC P G B	SIX	60-54.99S	169-15.13W	g		KIWI07RR
1300	131297	0	TDCT	E CTD 24 btl rosette	SIX	60-54.99S	169-15.13W	g		KIWI07RR
1511	131297	0	TDXX	B POPS multi-spectral	TAMU	60-54.99S	169-15.13W	g		KIWI07RR
1643	131297	0	TDXX	E attenuation	TAMU	60-54.99S	169-15.13W	g		KIWI07RR
2040	131297	0	TDCT	B TSONIC P G B	SIX	61-40.00S	168-50.01W	g		KIWI07RR
2122	131297	0	TDCT	E CTD 24 btl rosette	SIX	61-40.00S	168-50.00W	g		KIWI07RR
2233	131297	0	HCGF	B N GH A N15	LDEO	61-40.00S	168-50.00W	g		KIWI07RR
2255	131297	0	HCGF	E Trace metal rosette	LDEO	61-40.00S	168-50.00W	g		KIWI07RR
2315	131297	0	ON1M	B Live tow	SIX	61-40.00S	168-50.00W	g		KIWI07RR
2349	131297	0	ON1M	E vertical tow 200M	SIX	61-40.00S	168-50.00W	g		KIWI07RR
2355	131297	0	ONBG	B Bongo tow	SIX	61-40.00S	168-50.00W	g		KIWI07RR
0025	141297	0	ONBG	E vertical tow 200m	SIX	61-40.00S	168-50.00W	g		KIWI07RR
0105	141297	0	HCGF	B N GH A N15	LDEO	61-40.00S	168-49.99W	g		KIWI07RR
0125	141297	0	HCGF	E Trace metal rosette	LDEO	61-40.00S	168-50.01W	g		KIWI07RR
0150	141297	0	TDXX	B POPS multi-spectral	OSU	61-40.00S	168-50.01W	g		KIWI07RR
0334	141297	0	TDXX	E attenuation	OSU	61-40.00S	168-50.01W	g		KIWI07RR
0359	141297	0	HCGF	B N GH A N15	LDEO	61-40.00S	168-50.00W	g		KIWI07RR
0422	141297	0	HCGF	E Trace metal rosette	LDEO	61-39.99S	168-49.98W	g		KIWI07RR
0457	141297	0	GCKX	B Thorium pump cast	WHOI	61-40.00S	168-50.04W	g		KIWI07RR
0818	141297	0	GCKX	E	WHOI	61-40.00S	168-49.98W	g		KIWI07RR
0858	141297	0	TDCT	B TSONIC P G B	SIX	61-40.00S	168-49.99W	g		KIWI07RR
0937	141297	0	TDCT	E CTD 24 btl rosette	SIX	61-40.00S	168-50.00W	g		KIWI07RR
1006	141297	0	HCGF	B N GH A N15	LDEO	61-40.00S	168-50.00W	g		KIWI07RR
1027	141297	0	HCGF	E Trace metal rosette	LDEO	61-40.00S	168-50.01W	g		KIWI07RR
1110	141297	0	HCGF	B N GH A N15	LDEO	61-40.00S	168-50.03W	g		KIWI07RR
1140	141297	0	HCGF	E Trace metal rosette	LDEO	61-39.99S	168-50.05W	g		KIWI07RR

#GMT	DDMMYY	SAMP	B	SAMPLE	DISP				p	CRUISE
#TIME	DATE	TZ	CODE	E IDENTIFIER	CODE	LATITUDE	LONGITUDE		c	LEG-SHIP
#										
1405	141297	0	PHIS	B Free floating array	SIX	61-39.32S	168-49.24W	g		KIWI07RR
1029	151297	0	PHIS	E primary production	SIX	61-38.38S	168-34.26W	g		KIWI07RR
1715	141297	0	TDCT	B TSONIC P G B	SIX	61-40.00S	168-49.95W	g		KIWI07RR
1920	141297	0	TDCT	E CTD 24 btl rosette	SIX	61-39.99S	168-50.00W	g		KIWI07RR
2108	141297	0	HCGF	B N GH A N15	LDEO	61-40.00S	168-50.00W	g		KIWI07RR
2131	141297	0	HCGF	E Trace metal rosette	LDEO	61-40.00S	168-49.99W	g		KIWI07RR
2155	141297	0	ON1M	B Live Net Tow	SIX	61-40.00S	168-50.00W	g		KIWI07RR
2230	141297	0	ON1M	E vertical tow 200m	SIX	61-40.00S	168-50.00W	g		KIWI07RR
2237	141297	0	ONBG	B Bongo Tow	SIX	61-39.99S	168-50.01W	g		KIWI07RR
2310	141297	0	ONBG	E vertical tow 200m	SIX	61-39.98S	168-50.01W	g		KIWI07RR
2350	141297	0	TDCT	B TSONIC P G B	SIX	43-36.47S	172-42.89E	g		KIWI07RR
0030	151297	0	TDCT	E CTD 24 btl rosette	SIX	61-39.93S	168-50.04W	g		KIWI07RR
0155	151297	0	TDXX	B Pops	TAMU	61-40.05S	168-50.01W	g		KIWI07RR
0337	151297	0	TDXX	E attenuation	TAMU	61-40.05S	168-49.98W	g		KIWI07RR
0700	151297	0	TDCT	B TSONIC P G B	SIX	61-39.99S	168-49.97W	g		KIWI07RR
0729	151297	0	TDCT	E CTD 24 btl rosette	SIX	61-40.01S	168-49.97W	g		KIWI07RR
1130	151297	0	TDCT	B TSONIC P G B	SIX	61-40.07S	168-50.04W	g		KIWI07RR
1205	151297	0	TDCT	E CTD 24 btl rosette	SIX	61-40.07S	168-50.03W	g		KIWI07RR
1227	151297	0	ON1M	B Live tow	SIX	61-40.08S	168-50.05W	g		KIWI07RR
1300	151297	0	ON1M	E vertical tow 200M	SIX	61-40.10S	168-50.07W	g		KIWI07RR
1325	151297	0	ONBG	B Bongo tow	SIX	61-40.14S	168-49.85W	g		KIWI07RR
1355	151297	0	ONBG	E vertical tow 200m	SIX	61-40.04S	168-49.75W	g		KIWI07RR
1410	151297	0	TDCT	B TSONIC P G B	SIX	61-39.97S	168-49.97W	g		KIWI07RR
1722	151297	0	TDCT	E CTD 24 btl rosette	SIX	61-39.96S	168-50.15W	g		KIWI07RR
0731	161297	0	TDCT	B TSONIC P G B	SIX	64-09.21S	169-11.27W	g		KIWI07RR
0830	161297	0	TDCT	E CTD 24 btl rosette	SIX	64-09.21S	169-11.26W	g		KIWI07RR
0905	161297	0	HCGF	B N GH A N15	LDEO	64-09.21S	169-11.27W	g		KIWI07RR
0928	161297	0	HCGF	E Trace metal rosette	LDEO	64-09.22S	169-11.29W	g		KIWI07RR
1000	161297	0	ON1M	B Live tow	SIX	64-09.23S	169-11.29W	g		KIWI07RR
1030	161297	0	ON1M	E Live tow	SIX	64-09.23S	169-11.27W	g		KIWI07RR
1055	161297	0	ONBG	B Bongo tow	SIX	64-09.31S	169-11.35W	g		KIWI07RR
1120	161297	0	ONBG	E vertical tow 200m	SIX	64-09.49S	169-11.27W	g		KIWI07RR
1215	161297	0	TDCT	B TSONIC P G B	SIX	64-09.22S	169-11.24W	g		KIWI07RR
1245	161297	0	TDCT	E CTD 24 btl rosette	SIX	64-09.21S	169-11.20W	g		KIWI07RR
1355	161297	0	GCXX	B Thorium pump cast	WHOI	64-09.20S	169-11.17W	g		KIWI07RR
1729	161297	0	GCXX	E	WHOI	64-09.23S	169-09.93W	g		KIWI07RR

#GMT	DDMMYY	SAMP	B	SAMPLE	DISP				p	CRUISE
#TIME	DATE	TZ	CODE	E IDENTIFIER	CODE	LATITUDE	LONGITUDE		c	LEG-SHIP
#										
1758	161297	0	TDXX	B POPS multi-spectral	OSU	64-09.22S	169-11.28W	g		KIWI07RR
1914	161297	0	TDXX	E attenuation	OSU	64-09.22S	169-11.28W	g		KIWI07RR
1930	161297	0	TDCT	B TSONIC P G B	SIX	64-09.22S	169-11.29W	g		KIWI07RR
2017	161297	0	TDCT	E CTD 24 btl rosette	SIX	64-09.22S	169-11.27W	g		KIWI07RR
2046	161297	0	HCGF	B N GH A N15	LDEO	64-09.22S	169-11.28W	g		KIWI07RR
2105	161297	0	HCGF	E Trace metal rosette	LDEO	64-09.22S	169-11.28W	g		KIWI07RR
2121	161297	0	ONBG	B Bongo	SIX	64-09.26S	169-11.28W	g		KIWI07RR
2154	161297	0	ONBG	E vertical tow 200M	SIX	64-09.65S	169-11.25W	g		KIWI07RR
2214	161297	0	ON1M	B Live tow	SIX	64-09.60S	169-11.32W	g		KIWI07RR
2250	161297	0	ON1M	E vertical tow 200M	SIX	64-10.08S	169-10.93W	g		KIWI07RR
2305	161297	0	ONBG	B Bongo tow	SIX	64-10.21S	169-10.99W	g		KIWI07RR
2310	161297	0	ONBG	E vertical tow 200m	SIX	64-10.19S	169-11.09W	g		KIWI07RR
2329	161297	0	HCGF	B N GH A N15	LDEO	64-09.31S	169-11.22W	g		KIWI07RR
2353	161297	0	HCGF	E Trace metal rosette	LDEO	64-09.24S	169-11.17W	g		KIWI07RR
0104	171297	0	TDCT	B TSONIC P G B	SIX	64-09.24S	169-11.21W	g		KIWI07RR
0145	171297	0	TDCT	E CTD 24 btl rosette	SIX	64-09.22S	169-11.04W	g		KIWI07RR
0240	171297	0	TDXX	B POPS multi-spectral	TAMU	64-09.22S	169-11.27W	g		KIWI07RR
0407	171297	0	TDXX	E attenuation	TAMU	64-09.15S	169-11.12W	g		KIWI07RR
0559	171297	0	TDCT	B TSONIC P G B	SIX	64-09.21S	169-11.24W	g		KIWI07RR
0830	171297	0	TDCT	E CTD 24 btl rosette	SIX	64-09.22S	169-11.25W	g		KIWI07RR
1009	171297	0	HCGF	B N GH A N15	LDEO	64-09.21S	169-11.25W	g		KIWI07RR
1030	171297	0	HCGF	E Trace metal rosette	LDEO	64-09.21S	169-11.25W	g		KIWI07RR
1105	171297	0	HCGF	B N GH A N15	SIX	64-09.21S	169-11.26W	g		KIWI07RR
1130	171297	0	HCGF	E Trace metal rosette	LDEO	64-09.24S	169-11.20W	g		KIWI07RR
1930	171297	0	TDCT	B TSONIC P G B	SIX	64-44.54S	169-29.65W	g		KIWI07RR
2015	171297	0	TDCT	E CTD 24 btl rosette	SIX	64-44.61S	169-28.79W	g		KIWI07RR
2101	171297	0	TDXX	B POPS multi-spectral	OSU	64-42.04S	169-21.70W	g		KIWI07RR
2203	171297	0	TDXX	E attenuation	OSU	64-41.86S	169-20.15W	g		KIWI07RR
2235	171297	0	HCGF	B N GH A N15	LDEO	64-41.27S	169-18.52W	g		KIWI07RR
2255	171297	0	HCGF	E Trace metal rosette	LDEO	64-41.24S	169-18.27W	g		KIWI07RR
2330	171297	0	ONBG	B Bongo tow	SIX	64-40.55S	169-16.83W	g		KIWI07RR
0005	181297	0	ONBG	E vertical tow 200m	SIX	64-40.42S	169-16.49W	g		KIWI07RR
0015	181297	0	ON1M	B Live tow	SIX	64-40.40S	169-16.63W	g		KIWI07RR
0050	181297	0	ON1M	E vertical tow 200M	SIX	64-40.24S	169-16.61W	g		KIWI07RR
0051	181297	0	ON1M	B Live tow	SIX	64-40.25S	169-16.64W	g		KIWI07RR
0105	181297	0	ON1M	E vertical tow 200M	SIX	64-40.26S	169-16.80W	g		KIWI07RR

#	GMT	DDMMYY	SAMP	B	SAMPLE	DISP				p	CRUISE
#	TIME	DATE	TZ	CODE	E IDENTIFIER	CODE	LATITUDE	LONGITUDE		c	LEG-SHIP
0200	181297	0	GCTX	B	Thorium pump cast	WHOI	64-40.36S	169-18.75W	g		KIWI07RR
0526	181297	0	GCTX	E		WHOI	64-41.67S	169-19.00W	g		KIWI07RR
0547	181297	0	TDCT	B	TSONIC P G B	SIX	64-41.68S	169-18.98W	g		KIWI07RR
0625	181297	0	TDCT	E	CTD 24 btl rosette	SIX	64-41.71S	169-18.85W	g		KIWI07RR
0656	181297	0	TDXX	B	POPS multi-spectral	TAMU	64-41.71S	169-18.78W	g		KIWI07RR
0837	181297	0	TDXX	E	attenuation	TAMU	64-41.71S	169-18.68W	g		KIWI07RR
0900	181297	0	ONBG	B	Bongo Net	SIX	64-41.72S	169-18.78W	g		KIWI07RR
0935	181297	0	ONBG	E	vertical tow 200M	SIX	64-41.69S	169-18.33W	g		KIWI07RR
0943	181297	0	ON1M	B	Live Tow	SIX	64-41.69S	169-18.27W	g		KIWI07RR
1015	181297	0	ON1M	E	vertical tow 200M	SIX	64-41.73S	169-17.73W	g		KIWI07RR
1019	181297	0	ON1M	B	Live Net	SIX	64-41.78S	169-17.62W	g		KIWI07RR
1030	181297	0	ON1M	E	vertical tow 200M	SIX	64-41.77S	169-17.38W	g		KIWI07RR
1100	181297	0	HCGF	B	N GH A N15	LDEO	64-41.78S	169-17.20W	g		KIWI07RR
1120	181297	0	HCGF	E	Trace metal rosette	LDEO	64-41.71S	169-16.92W	g		KIWI07RR
1210	181297	0	HCGF	B	N GH A N15	LDEO	64-41.70S	169-16.65W	g		KIWI07RR
1235	181297	0	HCGF	E	Trace metal rosette	LDEO	64-41.53S	169-16.49W	g		KIWI07RR
1330	181297	0	TDCT	B	TSONIC P G B	SIX	64-43.34S	169-21.67W	g		KIWI07RR
1520	181297	0	TDCT	E	CTD 24 btl rosette	SIX	64-43.33S	169-21.67W	g		KIWI07RR
0109	191297	0	TDCT	B	TSONIC P G B	SIX	63-05.35S	169-52.91W	g		KIWI07RR
0150	191297	0	TDCT	E	CTD 24 btl rosette	SIX	63-05.34S	169-52.94W	g		KIWI07RR
0220	191297	0	HCGF	B	N GH A N15	LDEO	63-05.29S	169-53.08W	g		KIWI07RR
0241	191297	0	HCGF	E	Trace metal rosette	LDEO	63-05.28S	169-53.11W	g		KIWI07RR
0400	191297	0	TDXX	B	POPS multi-spectral	OSU	63-05.18S	169-53.07W	g		KIWI07RR
0530	191297	0	TDXX	E	attenuation	OSU	63-05.19S	169-53.07W	g		KIWI07RR
0700	191297	0	HCGF	B	N GH A N15	LDEO	63-05.30S	169-53.06W	g		KIWI07RR
0717	191297	0	HCGF	E	Trace metal rosette	LDEO	63-05.30S	169-53.05W	g		KIWI07RR
0745	191297	0	GCTX	B	Thorium pump cast	WHOI	63-05.32S	169-53.04W	g		KIWI07RR
1130	191297	0	GCTX	E		WHOI	63-05.95S	169-51.63W	g		KIWI07RR
1200	191297	0	TDCT	B	TSONIC P G B	SIX	63-05.09S	169-51.02W	g		KIWI07RR
1225	191297	0	TDCT	E	CTD 24 btl rosette	SIX	63-05.09S	169-51.01W	g		KIWI07RR
1255	191297	0	HCGF	B	N GH A N15	LDEO	63-05.09S	169-51.02W	g		KIWI07RR
1315	191297	0	HCGF	E	Trace metal rosette	LDEO	63-05.12S	169-50.96W	g		KIWI07RR
1355	191297	0	HCGF	B	N GH A N15	LDEO	63-05.10S	169-50.87W	g		KIWI07RR
1420	191297	0	HCGF	E	Trace metal rosette	LDEO	63-05.06S	169-50.75W	g		KIWI07RR
2245	191297	0	TDCT	B	TSONIC P G B	SIX	63-05.10S	169-50.70W	g		KIWI07RR
0140	201297	0	TDCT	E	CTD 24 btl rosette	SIX	63-05.14S	169-50.80W	g		KIWI07RR
0015	201297	0	ONBG	B	Bongo tow	SIX	63-05.14S	169-50.81W	g		KIWI07RR
0043	201297	0	ONBG	E	vertical tow 200m	SIX	63-05.14S	169-50.82W	g		KIWI07RR
0330	201297	0	TDXX	B	POPS multi-spectral	TAMU	63-05.09S	169-50.11W	g		KIWI07RR
0530	201297	0	TDXX	E	attenuation	TAMU	63-05.05S	169-50.01W	g		KIWI07RR
0555	201297	0	ONBG	B	Bongo Tow	SIX	63-05.01S	169-49.95W	g		KIWI07RR
0625	201297	0	ONBG	E	vertical tow 200m	SIX	63-05.00S	169-49.69W	g		KIWI07RR

#GMT	DDMMYY	SAMP	B	SAMPLE	DISP				p	CRUISE
#TIME	DATE	TZ	CODE	E IDENTIFIER	CODE	LATITUDE	LONGITUDE		c	LEG-SHIP
#										
0700	201297	0	TDCT	B TSONIC P G	B SIX	63-05.01S	169-49.70W	g		KIWI07RR
0754	201297	0	TDCT	E CTD 24 btl rosette	SIX	63-05.01S	169-49.70W	g		KIWI07RR
0925	201297	0	ONBG	B Bongo Tow	SIX	63-05.00S	169-49.68W	g		KIWI07RR
0953	201297	0	ONBG	E vertical tow 200m	SIX	63-05.02S	169-49.64W	g		KIWI07RR
1002	201297	0	ON1M	B Live Net	SIX	63-05.01S	169-49.61W	g		KIWI07RR
1034	201297	0	ON1M	E vertical tow 200m	SIX	63-05.03S	169-49.64W	g		KIWI07RR
1100	201297	0	TDCT	B TSONIC P G	B SIX	63-04.98S	169-49.58W	g		KIWI07RR
1200	201297	0	TDCT	E CTD 24 btl rosette	SIX	63-04.99S	169-49.58W	g		KIWI07RR
1250	201297	0	TDCT	B TSONIC P G	B SIX	63-05.00S	169-49.59W	g		KIWI07RR
1340	201297	0	TDCT	E CTD 24 btl rosette	SIX	63-05.01S	169-49.58W	g		KIWI07RR
1400	201297	0	ONBG	B Bongo	SIX	63-05.01S	169-49.58W	g		KIWI07RR
1437	201297	0	ONBG	E vertical tow 200m	SIX	63-04.97S	169-49.58W	g		KIWI07RR
1512	201297	0	TDCT	B TSONIC P G	B SIX	63-04.98S	169-49.58W	g		KIWI07RR
1549	201297	0	TDCT	E CTD 24 btl rosette	SIX	63-04.99S	169-49.58W	g		KIWI07RR
1607	201297	0	TDXX	B POPS multi-spectral	OSU	63-05.00S	169-49.58W	g		KIWI07RR
1745	201297	0	TDXX	E attenuation	OSU	63-04.99S	169-49.59W	g		KIWI07RR
1806	201297	0	ONBG	B Bongo	SIX	63-04.98S	169-49.59W	g		KIWI07RR
1837	201297	0	ONBG	E vertical tow 200m	SIX	63-04.99S	169-49.58W	g		KIWI07RR
1100	201297	0	TDCT	B TSONIC P G	B SIX	63-04.98S	169-49.58W	g		KIWI07RR
1150	201297	0	TDCT	E CTD 24 btl rosette	SIX	63-04.99S	169-49.57W	g		KIWI07RR
1209	201297	0	TDXX	B Pops multi-spectral	TAMU	63-05.01S	169-49.59W	g		KIWI07RR
1350	201297	0	TDXX	E attenuation	TAMU	63-05.00S	169-49.59W	g		KIWI07RR
0239	211297	0	TDCT	B TSONIC P G	B SIX	63-04.98S	169-49.47W	g		KIWI07RR
0538	211297	0	TDCT	E CTD 24 btl rosette	SIX	63-04.98S	169-49.47W	g		KIWI07RR
0917	211297	0	GCXX	B Thorium pump cast	WHOI	62-24.00S	169-50.00W	g		KIWI07RR
1300	211297	0	GCXX	E	WHOI	62-24.04S	169-49.83W	g		KIWI07RR
1310	211297	0	HCGF	B N GH A N15	LDEO	62-24.05S	169-49.81W	g		KIWI07RR
1330	211297	0	HCGF	E Trace metal rosette	LDEO	62-24.07S	169-49.87W	g		KIWI07RR
1600	211297	0	TDXX	B POPS multi-spectral	OSU	62-24.00S	169-50.01W	g		KIWI07RR
1810	211297	0	TDXX	E attenuation	OSU	62-24.00S	169-50.00W	g		KIWI07RR
1908	211297	0	TDCT	B TSONIC P G	B SIX	62-24.00S	169-49.99W	g		KIWI07RR
1955	211297	0	TDCT	E CTD 24 btl rosette	SIX	62-24.01S	169-49.99W	g		KIWI07RR
2009	211297	0	HCGF	B N GH A N15	LDEO	62-24.00S	169-50.00W	g		KIWI07RR
2025	211297	0	HCGF	E Trace metal rosette	LDEO	62-23.93S	169-49.97W	g		KIWI07RR
2104	211297	0	ON1M	B Live Net	SIX	62-24.00S	169-50.01W	g		KIWI07RR
2136	211297	0	ON1M	E vertical tow 200M	SIX	62-23.67S	169-49.99W	g		KIWI07RR
2142	211297	0	ONBG	B Bongo Tow	SIX	62-23.64S	169-50.01W	g		KIWI07RR
2215	211297	0	ONBG	E vertical tow 200M	SIX	62-23.33S	169-50.10W	g		KIWI07RR
2310	211297	0	HCGF	B N GH A N15	LDEO	62-23.88S	169-50.23W	g		KIWI07RR
2335	211297	0	HCGF	E Trace metal rosette	LDEO	62-23.89S	169-50.55W	g		KIWI07RR

#GMT	DDMMYY	SAMP	B	SAMPLE	DISP				p	CRUISE
#TIME	DATE	TZ	CODE	E IDENTIFIER	CODE	LATITUDE	LONGITUDE		c	LEG-SHIP
#										
0247	221297	0	TDXX	B POPS multi-spectral	TAMU	62-23.99S	169-50.00W	g		KIWI07RR
0349	221297	0	TDXX	E attenuation	TAMU	62-24.00S	169-49.98W	g		KIWI07RR
0457	221297	0	TDCT	B TSONIC P G	SIX	62-24.02S	169-49.92W	g		KIWI07RR
0657	221297	0	TDCT	E CTD 24 btl rosette	SIX	62-24.04S	169-49.88W	g		KIWI07RR
0900	221297	0	ON1M	B Live Net	SIX	62-24.00S	169-49.99W	g		KIWI07RR
0936	221297	0	ON1M	E vertical tow 200M	SIX	62-24.01S	169-49.98W	g		KIWI07RR
0946	221297	0	ONBG	B Bongo Tow	SIX	62-23.99S	169-49.99W	g		KIWI07RR
1020	221297	0	ONBG	E vertical tow 200M	SIX	62-23.99S	169-49.99W	g		KIWI07RR
1100	221297	0	HCGF	B N GH A N15	LDEO	62-24.01S	169-49.98W	g		KIWI07RR
1115	221297	0	HCGF	E Trace metal rosette	LDEO	62-23.95S	169-49.94W	g		KIWI07RR
1203	221297	0	HCGF	B N GH A N15	LDEO	62-23.95S	169-49.90W	g		KIWI07RR
1230	221297	0	HCGF	E Trace metal rosette	LDEO	62-23.67S	169-50.11W	g		KIWI07RR
1339	221297	0	PHIS	B Free floating array	SIX	62-23.85S	169-49.79W	g		KIWI07RR
1035	231297	0	PHIS	E primary production	SIX	62-26.72S	169-45.11W	g		KIWI07RR
1612	221297	0	TDXX	B POPS multi-spectral	OSU	62-24.01S	169-50.03W	g		KIWI07RR
1805	221297	0	TDXX	E attenuation	OSU	62-24.07S	169-50.04W	g		KIWI07RR
1818	221297	0	TDCT	B TSONIC P G	SIX	62-24.00S	169-50.01W	g		KIWI07RR
1841	221297	0	TDCT	E CTD 24 btl rosette	SIX	62-23.99S	169-50.00W	g		KIWI07RR
2103	221297	0	HCGF	B N GH A N15	LDEO	62-23.84S	169-50.13W	g		KIWI07RR
2121	221297	0	HCGF	E Trace metal rosette	LDEO	62-23.84S	169-50.13W	g		KIWI07RR
2137	221297	0	ON1M	B Live Net	SIX	62-23.85S	169-50.13W	g		KIWI07RR
2215	221297	0	ON1M	E vertical tow 200m	SIX	62-23.88S	169-49.87W	g		KIWI07RR
2224	221297	0	ONBG	B Bongo Net	SIX	62-24.05S	169-49.62W	g		KIWI07RR
2255	221297	0	ONBG	E vertical tow 200m	SIX	62-24.03S	169-49.42W	g		KIWI07RR
2340	221297	0	TDCT	B TSONIC P G	SIX	62-24.09S	169-49.25W	g		KIWI07RR
0235	231297	0	TDCT	E CTD 24 btl rosette	SIX	62-24.12S	169-48.99W	g		KIWI07RR
0542	231297	0	TDXX	B POPS multi-spectral	TAMU	62-24.00S	169-50.02W	g		KIWI07RR
0740	231297	0	TDXX	E attenuation	TAMU	62-23.98S	169-50.00W	g		KIWI07RR
1533	231297	0	TDCT	B TSONIC P G	SIX	61-39.98S	168-49.98W	g		KIWI07RR
1642	231297	0	TDCT	E CTD 24 btl rosette	SIX	61-39.99S	168-49.96W	g		KIWI07RR
2022	231297	0	TDCT	B TSONIC P G	SIX	61-10.10S	168-50.02W	g		KIWI07RR
2130	231297	0	TDCT	E CTD 24 btl rosette	SIX	61-10.01S	168-49.91W	g		KIWI07RR
0251	241297	0	TDCT	B TSONIC P G	SIX	60-40.00S	168-49.81W	g		KIWI07RR
0410	241297	0	TDCT	E CTD 24 btl rosette	SIX	60-39.83S	168-49.06W	g		KIWI07RR
0555	241297	0	TDCT	B TSONIC P G	SIX	60-47.50S	168-50.01W	g		KIWI07RR
0712	241297	0	TDCT	E CTD 24 btl rosette	SIX	60-47.79S	168-49.61W	g		KIWI07RR
0842	241297	0	TDCT	B TSONIC P G	SIX	60-55.00S	168-50.00W	g		KIWI07RR
1000	241297	0	TDCT	E CTD 24 btl rosette	SIX	60-54.99S	168-50.01W	g		KIWI07RR

#GMT	DDMMYY	SAMP	B	SAMPLE	DISP				p	CRUISE
#TIME	DATE	TZ	CODE	E IDENTIFIER	CODE	LATITUDE	LONGITUDE		c	LEG-SHIP
#										
1145	241297	0	TDCT	B TSONIC P G	B SIX	61-02.55S	168-49.94W	g		KIWI07RR
1300	241297	0	TDCT	E CTD 24 btl rosette	SIX	61-02.59S	168-49.63W	g		KIWI07RR
1525	251297	0	GCTX	B Thorium pump cast	WHOI	55-40.13S	171-44.88W	g		KIWI07RR
1900	251297	0	GCTX	E	WHOI	55-42.03S	171-41.38W	g		KIWI07RR
2019	251297	0	TDXX	B POPS multi-spectral	OSU	55-39.99S	171-45.00W	g		KIWI07RR
2054	251297	0	TDXX	E attenuation	OSU	55-39.98S	171-45.00W	g		KIWI07RR
2108	251297	0	TDCT	B TSONIC P G	B SIX	55-39.99S	171-45.00W	g		KIWI07RR
2213	251297	0	TDCT	E CTD 24 btl rosette	SIX	55-39.99S	171-45.00W	g		KIWI07RR
2232	251297	0	HCGF	B N GH A N15	LDEO	55-39.97S	171-45.00W	g		KIWI07RR
2355	251297	0	HCGF	E Trace metal rosette	LDEO	55-39.89S	171-44.50W	g		KIWI07RR
0005	261297	0	ONBG	B Bongo tow	SIX	55-39.95S	171-44.53W	g		KIWI07RR
0030	261297	0	ONBG	E vertical tow 200m	SIX	55-40.10S	171-44.27W	g		KIWI07RR
0045	261297	0	HCGF	B N GH A N15	LDEO	55-40.18S	171-44.21W	g		KIWI07RR
0105	261297	0	HCGF	E Trace metal rosette	LDEO	55-40.30S	171-44.12W	g		KIWI07RR
0200	261297	0	HCGF	B N GH A N15	LDEO	55-40.02S	171-44.99W	g		KIWI07RR
0215	261297	0	HCGF	E Trace metal rosette	LDEO	55-40.11S	171-44.83W	g		KIWI07RR
0503	261297	0	TDCT	B TSONIC P G	B SIX	55-40.00S	171-44.86W	g		KIWI07RR
0602	261297	0	TDCT	E CTD 24 btl rosette	SIX	55-40.01S	171-44.88W	g		KIWI07RR
0615	261297	0	TDXX	B POPS multi-spectral	TAMU	55-40.02S	171-44.88W	g		KIWI07RR
0732	261297	0	TDXX	E attenuation	TAMU	55-39.87S	171-44.89W	g		KIWI07RR
0903	261297	0	ON1M	B Live Net	SIX	55-40.00S	171-45.00W	g		KIWI07RR
0932	261297	0	ON1M	E vertical tow 200M	SIX	55-40.03S	171-44.78W	g		KIWI07RR
0940	261297	0	ON1M	B Live Net	SIX	55-40.05S	171-44.57W	g		KIWI07RR
1013	261297	0	ON1M	E vertical tow 200M	SIX	55-39.93S	171-44.41W	g		KIWI07RR
1050	261297	0	HCGF	B N GH A N15	LDEO	55-39.84S	171-44.64W	g		KIWI07RR
1105	261297	0	HCGF	E Trace metal rosette	LDEO	55-39.80S	171-44.44W	g		KIWI07RR
1155	261297	0	HCGF	B N GH A N15	LDEO	55-39.65S	171-45.24W	g		KIWI07RR
1225	261297	0	HCGF	E Trace metal rosette	LDEO	55-39.69S	171-45.13W	g		KIWI07RR
1350	261297	0	PHIS	B Free floating array	SIX	55-39.83S	171-44.59W	g		KIWI07RR
1254	271297	0	PHIS	E primary production	SIX	55-38.01S	171-19.71W	g		KIWI07RR
1425	261297	0	TDCT	B TSONIC P G	B SIX	55-40.15S	171-45.22W	g		KIWI07RR
1523	261297	0	TDCT	E CTD 24 btl rosette	SIX	55-40.08S	171-45.01W	g		KIWI07RR
1910	261297	0	GCTX	Thorium pump cast	WHOI	55-39.91S	171-44.99W	g		KIWI07RR

#	GMT	DDMMYY	SAMP	B	SAMPLE	DISP				p	CRUISE
#	TIME	DATE	TZ	CODE	E IDENTIFIER	CODE	LATITUDE	LONGITUDE		c	LEG-SHIP
0858	271297	0	TDCT	B	TSONIC P G	SIX	55-37.22S	171-27.27W	g		KIWI07RR
1004	271297	0	TDCT	E	CTD 24 btl rosette	SIX	55-37.20S	171-27.27W	g		KIWI07RR
2121	271297	0	TDCT	B	TSONIC P G	SIX	54-20.00S	173-20.01W	g		KIWI07RR
2208	271297	0	TDCT	E	CTD 24 btl rosette	SIX	54-20.08S	173-19.98W	g		KIWI07RR
2232	271297	0	HCGF	B	N GH A N15	LDEO	54-20.02S	173-20.03W	g		KIWI07RR
2250	271297	0	HCGF	E	Trace metal rosette	LDEO	54-20.10S	173-19.95W	g		KIWI07RR
2330	271297	0	ONIM	B	Live tow	SIX	54-20.12S	173-19.90W	g		KIWI07RR
0015	281297	0	ONIM	E	vertical tow 200M	SIX	54-20.43S	173-19.21W	g		KIWI07RR
0020	281297	0	ONBG	B	Bongo tow	SIX	54-20.52S	173-19.05W	g		KIWI07RR
0050	281297	0	ONBG	E	vertical tow 200m	SIX	54-20.60S	173-18.85W	g		KIWI07RR
0125	281297	0	TDCT	B	TSONIC P G	SIX	54-20.63S	173-18.47W	g		KIWI07RR
0215	281297	0	TDCT	E	CTD 24 btl rosette	SIX	54-19.95S	173-19.95W	g		KIWI07RR
0240	281297	0	TDXX	B	POPS multi-spectral	OSU	54-19.97S	173-19.99W	g		KIWI07RR
0410	281297	0	TDXX	E	attenuation	OSU	54-19.96S	173-19.99W	g		KIWI07RR
0607	281297	0	TDCT	B	TSONIC P G	SIX	54-19.97S	173-19.96W	g		KIWI07RR
0812	281297	0	TDCT	E	CTD 24 btl rosette	SIX	54-19.95S	173-19.97W	g		KIWI07RR
1000	281297	0	HCGF	B	N GH A N15	LDEO	54-20.00S	173-19.99W	g		KIWI07RR
1020	281297	0	HCGF	E	Trace metal rosette	LDEO	54-20.00S	173-20.01W	g		KIWI07RR
1100	281297	0	HCGF	B	N GH A N15	LDEO	54-19.99S	173-19.98W	g		KIWI07RR
1130	281297	0	HCGF	E	Trace metal rosette	LDEO	54-19.96S	173-19.97W	g		KIWI07RR
1230	281297	0	ONIM	B	Live tow	SIX	54-19.65S	173-20.19W	g		KIWI07RR
1310	281297	0	ONIM	E	vertical tow 200M	SIX	54-19.35S	173-20.30W	g		KIWI07RR
1315	281297	0	ONBG	B	Bongo tow	SIX	54-19.32S	173-20.33W	g		KIWI07RR
1345	281297	0	ONBG	E	vertical tow 200m	SIX	54-19.59S	173-20.04W	g		KIWI07RR
1400	281297	0	HCGF	B	N GH A N15	LDEO	54-19.90S	173-19.94W	g		KIWI07RR
1415	281297	0	HCGF	E	Trace metal rosette	LDEO	54-19.88S	173-19.84W	g		KIWI07RR
1910	281297	0	TDCT	B	TSONIC P G	SIX	54-20.00S	173-20.03W	g		KIWI07RR
2325	281297	0	TDCT	E	CTD 24 btl rosette	SIX	54-19.99S	173-20.03W	g		KIWI07RR
0755	291297	0	TDCT	B	TSONIC P G	SIX	52-56.83S	174-43.78W	g		KIWI07RR
1000	291297	0	TDCT	E	CTD 24 btl rosette	SIX	52-57.14S	174-43.43W	g		KIWI07RR
2105	291297	0	TDCT	B	TSONIC P G	SIX	52-56.81S	174-43.79W	g		KIWI07RR
2150	291297	0	TDCT	E	CTD 24 btl rosette	SIX	52-57.20S	174-43.56W	g		KIWI07RR
#					End Sample Index						KIWI07RR