

Peveril Meigs, Baja California Research Materials  
1925 - 1979. MSS 530

Journal 3, 1926. June - July. Baja California.

Digitized version made available by



Copyright: UC Regents

Use: This work is available from the UC San Diego Libraries. This digital copy of the work is intended to support research, teaching, and private study.

Constraints: This work is protected by the U.S. Copyright Law (Title 17, U.S.C.). Use of this work beyond that allowed by "fair use" requires written permission of the UC Regents. Permission may be obtained from the UC San Diego Libraries department having custody of the work (<http://libraries.ucsd.edu/locations/mscl/>). Responsibility for obtaining permissions and any use and distribution of this work rests exclusively with the user and not the UC San Diego Libraries.

1926 (2) (Overall 3)

June 25/1926. Sta. Domingo  
Horno.

1926

June 28 - 29. Trip from (Santa)

Legaspi to Mellinas  
(San Jose)

June 30. up to Le Corona (58 miles)

July 4. San Pedro Martir Mission

Santa Domingo.

June 25, 1926

(Up cañon from camp. Ate Indian roots.)

(~~Part~~ No Cañon from camp. Ate Indian roots.)

Cult. step of supposed reservoir is  $3\frac{1}{2}$ ' above the  
irrig. ditch down. No water here. Probably sheep pen  
pen.  
Well ruin (Next ruin)



A few skulls around it.

veg. Blue sky in slope above mostly  
Valley bottom as far as down.

2200 ... before.

June 25 (44.5)  
" 26 (53)  
" 27 (57)  
" 28 (78)

St. Helens.

" 29 (9.8) (in crown, little)  
" 30 San Jose

(End)

9.5  
6.  
21.  
32.

9.5  
11 110 5  
60  
37  
2 530  
11

Sib. Dmings

[Paces?]

Mission

N. 25° W. (15 1/2 miles)

And...

video of  
over.  
Black sage iv

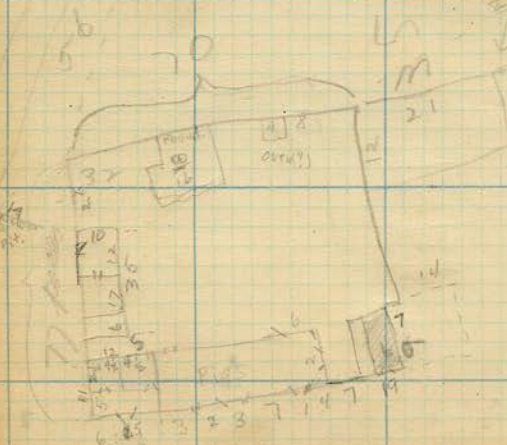
Unused map 45.

Each clam - slab

between some conifers big bears

1/4 mile?

1/4 mile



Ref.



Stone + debris

110



48



6 high with slope falling



1 pace = 5/6 yd.

(2)

Photo # 22, 2. Sta. Domingo Mission still in use (by  
figs). f 11,  $\frac{1}{25}$ . June 23, 1926.

Photo # 22, 3. f 11,  $\frac{1}{25}$ . Detail of the mission.

Photo # 22, 4. f 32,  $\frac{1}{2}$ . " " " mission.

Photo # 22, 5. W. wall of mission.

Photo # 22, 6. S. wall of mission. Accidentally overexposed:

f 11,  $\frac{1}{2}$ "  
Photo # 23, 1. S. Wall of mission. f 11,  $\frac{1}{25}$ "

Cult. The brother of owner of house near mission showed me the old fig, pear, and guavas trees of the franks. Also, olive stump (cut down 10 yrs ago.) and tamar. Black figs, the big trees on their sides and taking root along their trunks.

Bananas doing very well here. He gets \$ .50 - \$ 2.50 a bunch, with great demand. Only planted 5 yr. ago. Nearly ripe.

1 family in Sta. Domingo, 5 children being the smallest number in any. He's one of a family of 9 boys & two girls - 11 in all.

Old mission has many swallows' nests.

Photo # 23, 2, 3, 4. Pavona, Santo Domingo mission. <sup>side</sup> Got "know",  
W. side. f 22,  $\frac{1}{25}$ "

Geog. The hill above Sta. 15 is of fine purplish, smooth lava.  
Veget. Slope NE of Sta 16 abundant with coral on much of  
perhaps  
L.F. + Veg. on Sta. 16, dry sand, with some willow, alkali, and grass, coral & perhaps + Sta.

June 26, Sat.

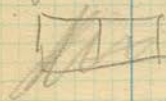
Cult. Stonewall W. of St. Domingo said to be mark of Adobe.  
Veg. Wildrose on cone 9, with mesquite, acacia, pitahaya,  
Flower heather. Much vidrio on good sand near at foot.  
Cult. Mescal pit at foot of cone 7.

Stonewall is N. 10° W. (15 1/2" dia.) 4 1/2" thick. Of  
cobbles (pebbles some 1" in dia.) 3" high.

Photo # 24, 5. The stonewall. Bright cloudy. f22, 1/8",  
15". Burned "wild holly" on left.

Cult. Ques. Crucifera lactuca on the  
back corner of E. Santa Domingo and the  
light colored mission & house nearby due  
soil derived from volcanic rock dark  
red.

By Sta. 157 little crucifera lactuca basin.



Two brick pits  
(3' deep sunk in ground)

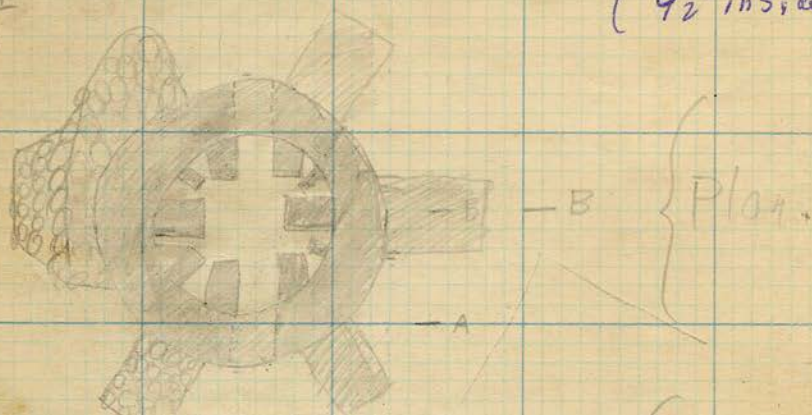
as monuments [leaves standing?]

Photo # 24, 6. f22, 1/8". Santa  
Domingo mission, from middle hill.  
Red rock in distance.

Cult. At sta. 23, a great "horn"

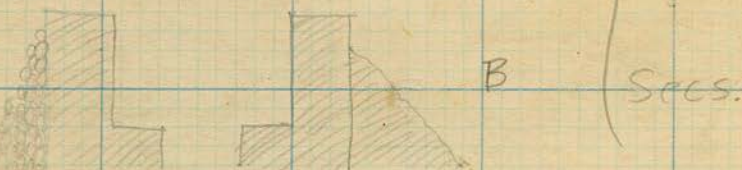
$9\frac{1}{2}$ ' inside dia.  
( $9\frac{1}{2}$ ' inside diam.)

SE



154.2

Strip of [unclear]



Made of adobe, well baked on inside,  
plastered on outside with smooth adobe. Had for  
what? "striking bricks"? Minored them for smelting.  
Photo # 23, 64 24, 1. The horns from valley  
side.  $f. 11, \frac{1}{2}$  35'

Photo # 24, 2. The other face of the horns  
 $f. 22, \frac{1}{2}$ . Paint sun. 25'

(5)



veg. By the house is say 11' high.

Photo #24, 3. f 11, 25, 12. A mescal pit, at SE junction of side cañon with dete. Downy of Pacts behind, a channel scraped out. Above it.

Cutt. 6. About 150 yd. S. of the S.E. junction is another may be the end of a ledge: great rocks flattened over with mud. If so, the lower channel about to the house.

Photo #24, 4. f 22, 45. Very bright sun. The big side cañon on N. side of Sts. Downy cañon a mile down basin of little to rt. side about 75' high.

Cutt. 7. Some 300 yd. W. of "little cliff," on N. side of valley, the modern irrigating water runs in a massively stone-lined ditch, that of the preler, I am certain.

veg. Near the ditch were a good many mill grapevines, and mesquite trees (*Prosopis juliflora glandulosa*). Feds nearby, full grown.

Pers. Delicious honey #1 a yellow, we bought. In an, a wonderful full moon, and a coyote waiting on the side of the cañon, his wail echoing clearly in the cañon.

(Redys on back sheet: elev., clim., S. Pedro Martin) (6)

Climatic - Data

Jun. 26	7:30 AM	70°	SW. Gentle (under N. side)	Sun. more clear for first time this trip? Yesterday not clear till 10 A.M.	Sta. Panning Camp
"	10 "		NW. Gentle	Cloudy.	"
"	12:45 PM	86°	SW faint	Cloudy. Faint sun.	"
"	1 P.M.	81°	SW. Brisk	"	"
"	3 P.M.	69°	SW. Brisk	cloudy. No sun.	"
"	3:40 PM	72°	NE Gen.	"	"
"	3:55 PM	74°	S. Gen.	"	"
"	4 PM	73°	SW. Brisk	"	"
"	4:05 PM	73°	SW. Brisk	"	"
"	4:10 PM	71°	S. 70° N. Brisk	"	"
"	4:15 PM	70°	S.W. Brisk	"	"

Jun 27	8:15 AM	76°	SW Brisk	Clear some clouds (rained at 2 A.M. - 6 A.M. Sky mostly clear)	
" 28	5:45		NW Gen.	Clear. S. of Laguna	
" "	6:00	66°	"	Heavy dew.	
" "	7:45	72°	S.W. Gen	Clear	

				Bar. (100 Log. po. 29.5. Tel.)	Mileage (elevation)	
" "	11:45	89°	Brisk	800	4	Clear. Cumuli over Mts.
" 30	7:30 P.M.	54°	Faint.	7,500		L. Corona. Clear. No cumuli today.
Jul. 1	4:30 AM	49°	"	"		"
"	12:15 PM	69°	Brisk	9,250		High Point, N.E. Vallejos
Jul. 2.	5:00 AM	57°	(wind S.E. all day)			Vallejos.
"	7:50 P	59°	(wind SW on peak)	7,450		Alcatraz.
Jul. 3	5 AM	41°				"
"	12 PM	80°	SW Brisk	6,350		Santo Tomas
"	4:00 PM	80°	SW Brisk	5,635		San Pedro Martir Mission
"	6:05 PM	74°	"	"		"
"	7:30 PM	68°	"	"		"
"	8 PM	66°	alm			"
Jul. 4	5 A.M.	63°	N 60° E. Br.	5,525		"
"	12 noon	83°	S 75° W Br.	5,560		"
"	6:30 PM	81.5°	"	3,410		"
"	8:00	66°	"	3,360		San Isidoro (2 mi. down)
Jul 5	4:30	51°	"	3,330		"

Pers. We were pretty tired of our old camp, with increasing insects and dust. Pulled out for San Jose. Camped in level plain. Walter's radio, with its blue music, was quite a pleasure. Also, 3 games of chess with Soudley last night. This morning, we all indulged in card tricks, etc. Soudley knew some good ones. Most of the engineers are planning to get homesteads on the San Joaquin plain after the dam is built.

Lots of insects of all kinds attracted to lantern at night.  
Tried making biscuits last night.

June 28. (28)

Pers. and Mrs. Lamb at San Hedmo.

San Telmo (Legaspe) to Mts.

At San Telmo. (85)

L.F. Cañon 150 yds. wide. Marshy bottom.

veg. on s-facing slope, cochal + mescal + pitahaya. On N-facing slope, black sage mostly. Bottom, marsh grass + rushes exist.

Cult. N. ~~road~~ side cañon road is better.

Geog. (87.5) Granite on NE. side of cañon.

veg. Sage on facing SE, by San Telmo telephone house, has good China woods.

Photo # 25.1. f 22, 1/2. Color. Looking E. from ridge just E. of San Telmo.

Photo # 25.2. f 22, 1/2. Same, same color.

Photo # 25.3. San Telmo cañon.

L.F. The peaks of San Telmo, & E., are a couple of large basins along the San Telmo Valley.

veg. In the big basin just west of the broken metamorphics, some willow & cypripedium there. At 00 (mouth of metamorphics cañon) some orange parasite on some willow.

In cañon, at 04, mild lilac at foot of slopes, with orange parasite on it. Black sage on N-facing slopes; mescal, pitahaya, flower heather, cymbal. leaf on s-facing slope. 9


Pers. Stop every  $\frac{1}{2}$  mi. to cool motor.

Terrible time on some of the hills within 10 mi. of San Jose. We "bucked" up some of the hills, 3 ft. at a time, one man shoring and creaking. Twice we unloaded everything and "portaged" it wearily. (Hottest time of day: 90°) We backed until the reverse band was worn out (we tightened all bands to the limit.)

At 7 P.M. we camped at foot of bad grade, both worn <sup>worn out</sup> out, with  $\frac{3}{4}$  gal. of water left. A cup apiece, with dried prunes & chocolate, for supper, & to bed at 7:45. In the morning, up at 5:45 and breakfast of tortillas (take little water) & honey, tea, bacon, & dried prunes.

At 7 A.M. temp. 86° in shade. Cleaned all spark plugs & coils, & took the grade in fine shape (without a load).

June 29 <sup>↑</sup> ~~↓~~ Soon at Mellings, & had a complete soaking, inside & out, in the creek.

Vegetation Junipers & yucca start w. of Mellings. Also a  tree common in cañons. It is "Palo Blanco".

Pers. In eve, slow a little, after getting ready to camp.

June 30.

(Saw a lot)

Packed up at 4:30, & left at 6:30, each  
of us with a mule, with a third mule  
for packing. Reached Socorro at 10:20.

(9 mi.) Near mt. as had on 2 occasions last yr.  
Saw a clump of <sup>(Sage)</sup> pinons at 5500'.  
After lunch we had quite a time  
finding trail to La Corona. At <sup>(San Jose)</sup> a  
beautiful, unexpected, welcome, oak-surrounded  
stream of water we lost the trail,  
and were headed north toward toward  
La Concepción, when we met Sr. Dick(?) &  
Peralta, who were headed for La  
Corona, & we went with them. We  
wouldn't have gotten there for two  
days.

Veget. Thick of thickets of madroños,  
para prieta ("heather" but in Quilichao),  
etc., called "Monte"! Texas, clothing  
to pieces. They drop lighted  
matches as they go, to burn it  
off. Much Sp. bayonet (Yucca Mohav.).

L.F. All the way from San José, granite  
"rock pile" country (Socorro, schist.)

Cult. Much evidence of Socorro  
placers. No one there now. Grandma Johnson's  
tales of carrying the gold out in buggy.  
(They came from Texas 37 yr. ago) (H)

La Corona

L.F. Granite basin, marsh, perm. stream.  
Veg. Rank grass, fine for stock.  
Great yellow pines. (See last  
Yr notes.)

July 1, 1936

Corona to Vallecitos

Start 6:20  
N 30° W E.

6:55 - N. 35° E.

7:00 - N. 25° E.

7:05 - N. 50° E.

7:08 - N. 80° E - (into next valley E)

7:13 - N. 60° E.

7:30 - N. 50° E.

7:45 - N 60° E - (Aspen)

8:00 - N. 85° E. (Sugar pine & fir also in light)

8:06 - S. 60° E. (All way open grass)

8:15 - S. 65° E. (Lupine soil. Sandy granite)

8:30 - E.

9:10 - Vallecitos (15 min. wait) ( Lodgepole pines around Vallecitos)

Photo # 25, 4 (June 30.) San Jose, from  
the east.

Photo # 25, 5. Facing E<sup>30°W</sup> from Mt. N of E  
of Vallecitos.  $\pm 22\frac{1}{2}$ "<sup>W</sup>, no color.

Photo # 25, 6. Same. Color. San Felipe  
desert in back ground.

Photo # 26, 1. Vallecitos, Facing S. 20° W.

Photo # 26, 2. La Providencia Peak,  
highest point of B. Cta. Facing S. 55° E.

Elev. of place from which last four  
photographs were taken, 9,250'. Monument  
on top: 1911.

Wonderful view, Gulf of Calif. to Pacific,  
from this high point. San Felipe desert,  
lying still and glittering, covered with  
small black bushes, except for bare  
strip along E. edge.

(Pers. Pine camp at Vallecitos. Slept between  
rocks, like in tomb. Pine for lunch:  
excellent.



July 2. Vallecitos to Alcatraz (2 mi. S. of  
La Grulla)

Photo # 26, 3. La Encantada Meadow.

Facing S. 20° E. Creek flows W. from middle.

Photo # 26, 4. Alcatraz. 5:30 P.M. f22, 3"

Where we camped the third night out.

Vegetation Vallecito, with many cattle, was pretty  
closely grazed: not like the luxuriant  
La Corona. (4 hr.)

Persons S. of Vallecito is La Encantada, with  
many cattle and 4 men, including  
Salvador Mellinger, who gave us ~~for~~ <sup>for</sup> ~~the~~ <sup>the</sup> ~~dinner~~  
~~W of~~ and whole calf tenderloin.  
Our first guide gave us a shoulder  
of venison.

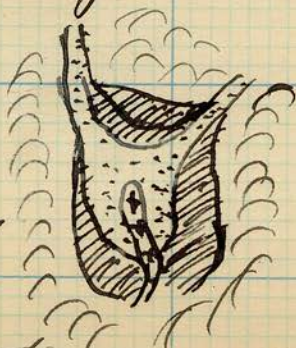
W. of La Encantada (1 1/2 hr.) is La  
Grulla meadow. Large, lots of john grass  
& cattle. We met two Arces and  
one Espinosa there. Lake at lower  
end.

S. of La Grulla Meadow is Alcatraz (1 hr.)  
a beautiful little flat a couple of hundred  
yd. in diameter, with luxuriant  
grass & clover & 'splendid water, yellow  
pines, as usual. (One of the Arces  
let us here.) All granite from Vallecito to here.

(Pers. supper of pile of meat, and rice, tea, prunes, & onion. A wonderful little spot is Alcatraz.

Vegetation from Vallejo, the underbrush increases, becoming almost a waste formation in places. Between Vallejo and La Encantada, some large, mountain junipers. Also, a small strip of sugar pines. Mostly, of course, yellow pine thin forest, with fir next most numerous.

L.F. Alcatraz flat is at the center of a basin several miles wide on all sides, with a narrow corridor outlet on the SW. The flat itself has interesting stream terraces.



☞ granite slopes

☞ 5' healed terrace

☞ Flat floor of flood waters.  
Granite sand

☞ 4' lower gully, at head of which stream begins

cross-section

Play of Alcatraz Flat

Pers. It was my turn to lead the  
pack-mule today - damn his hide!  
always keeping the rope taut.

Jul. 3

(Sam has Vaile, citz to Akapuz)  
(Sam has Vaile, citz to Akapuz)

Akapatraz to Santo Tomás.

6:30 - SE (left camp)

6:45 - S. 35° E. (up long cañon)

6:53 - S 20° W (Climbing out of  
cañon)

7 - S 10° E (In route)

7:15 - S 30° E (Pines)

7:21 - S 10° E. (to monte, S. edge forest  
Schist.)

7:30 - S. 10° E. (monte, schist)  
(A few pines in cañons  
upland; scrub oak)

7:45 - SE - crossing cañon, stream,  
terraces)

7:50 - S 10° W. (on cañon ridge)  
RH weather, 6' high)

8 - S. 10° E.

8:05 - S. 20° E. (Big cañon, with terraces)

8:15 - S. 30° E. (across stream, on terrace)

8:30 - S. 10° E. (A few pines coming  
into the monte; still saw some)

8:40 - S. - (Cortical) Xanthoxylum

8:45 - SW (house & being lost; see section)  
(This is Valle de Santo Tomás we have  
just entered.) (see star)

Very (One tree that has been very  
common is like the lime - oak except  
that the leaves are 1 rather than 2, and are  
not so hard, dark, or shiny. Also, costs  
less shade.) (6,350') Good water. Lots of  
fruit.

Santo Tomás to S.P. Martín

Photo # 26, 5. 10 A.M.  $f22, \frac{1}{25}$  " into  
Santo Tomás Valley, near upper end. Facing due W,  
from mt. on S. side.

Cult. Old irrig. ditch at foot of S. slope.

L.F. Peak S. of Valley, forest W, entering  
end, 6,900'.

Photo # 26, 6. Same, from higher up.

Photo # 27, 1.  $f22, \frac{1}{25}$  " 50', 10:30 A.M.

Mount, at this point mostly of molinos.

12:15 - S 30° W. (Left Santa Teresa  
and went down  
valley)

12:30 - N. 70° W. (Still in the Santa  
Teresa Valley. Good pasture,  
much sage (Chenopod)  
at edge of monte on  
slopes, with juniper  
scattered trees)

12:45 - N. 70° W. (Cross narrow, we leave  
it down off.)

1 - N 60 W (Heather "monte"  
& yellow)

1:15 - W

1:40 - S. 70° W. " Trees!  
Down!

1:45 - N. 70° W

2 - N. 60 W. (More scrub oak  
still monte.)

2:10 - N S. Pedro Martin Mission (flat)

All day travelling today was at a fast pace; about  
1/2 hr trotting; say 30 min per hr.

Pers. We camped at a delightful little flat, about 1/2 mi.  
E of the Mission. Plenty of grass & water. Some good  
E shrub at a distance. I lost my saddle; the monte  
must have broken the strap, tho' it was well-  
tied to me by my belt; tongs ends at this stage.

Data on back: 18 1/2

18

A - Camp, W side large by cañon side

B - 100 yd. S. 60° W. from camp. Edge of camp side

C - White rock, W. 5° S. from B, 500 yd. fr. B.

1. Tree, N. edge of arroyo, S. 40° W. from A

1" " , S. 5° W. from B,

2. Hill, N. 2° W. from B; 18° up. N. 25° E. from D

3. Hill N. 55° W. " " ; 9° up. N. 32° W. from C.

4. Hill W. 10° S. from B. Hill d. W. end by W. 6° N. fr. 16.

5. Hill S. 10° W. from A; 9° up. S. 25° E. from D. fr. 15

D - Toward white rock, 200 yd.

6. Stout structure, N. 25° W. from D. 75 yd. fr. D.

7. Edge of arroyo, S. 25° E. from D, 108 yd. Arroyo here 125 yd. wide

Slope of side, 38°. Pool all way down arroyo 30' deep.

Cañon trend, S. 65° W. from 7.

8. Nose, S. side of cañon, S. 45° W. from 7. S. 35° E. from C.

9. Foot of S. slope. S. 17° E. from C. E. 2° N. from 15.

10. Sequia (?), N. from C. 50 yd.

11. Cot. mission, N. 80° N. from C. 75 yd.

12. thru ridge, S. 10° E. from C. 2° up. S. 17° E. fr. 16.

13. thru ridge, S. 40° W. from C. 14° up. S. 50° W. fr. 15.

14. Hill between 3 & 4. N. 72° W. fr. C. up 3/2.

15. Big pine, S. 15° W. from C. S. 3° E. from 16. 400 yd.

16. SE Cot. wall. S. 15° W. from near 11. 170 yd.

17. S. 70° E. fr. 15. up 7°

18. N. 70° E. fr. 15. Rock. E. from C. up 7 1/2°

19. Rose N. 52° E. fr. 15. N. 60° E. from C. up 10°

20. Ft. slope, by Sequia. S. 54° E. from C. S. 35° W. from A

21. Rock by S. thru. E. fr. C. fr. camp. S. 66° E.

(P. 182)

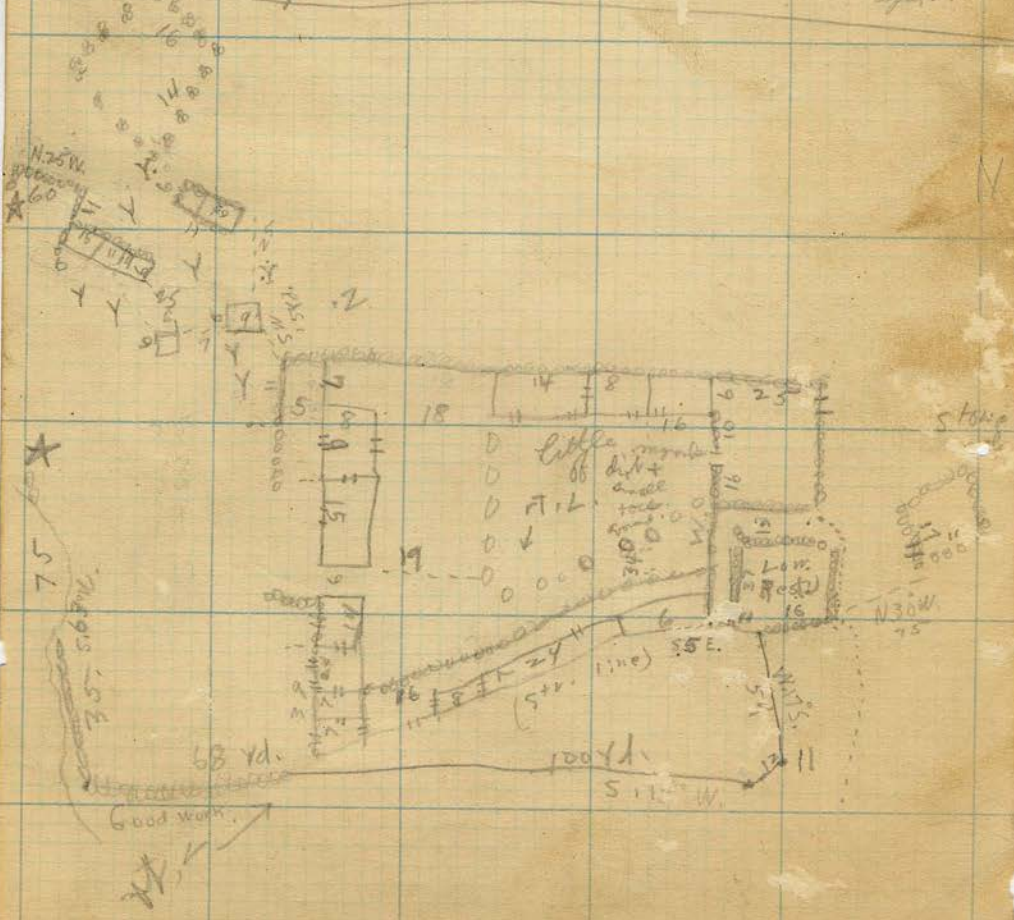
W

S. P. M. "Mission" Distances in yd.

A some spot.

- Earth wall
- o o o o stone wall
- — — Earth on stone
- — — Double str. wall (maybe square)

d & z found & tiles 9" sq., 1 1/2" thick, all broken or at least some sq., these carried like roof tiles.  
 Y - pots, frags., hand axes.  
 & all the pile 3 1/2 (and) apart.



E

July 4, 1926. Independence Day. Mapping at 5:30.

See My <sup>inscr. on rock.</sup> San Pedro Martir Mission.

Fravosa. Scale about 3" = 1 mi.

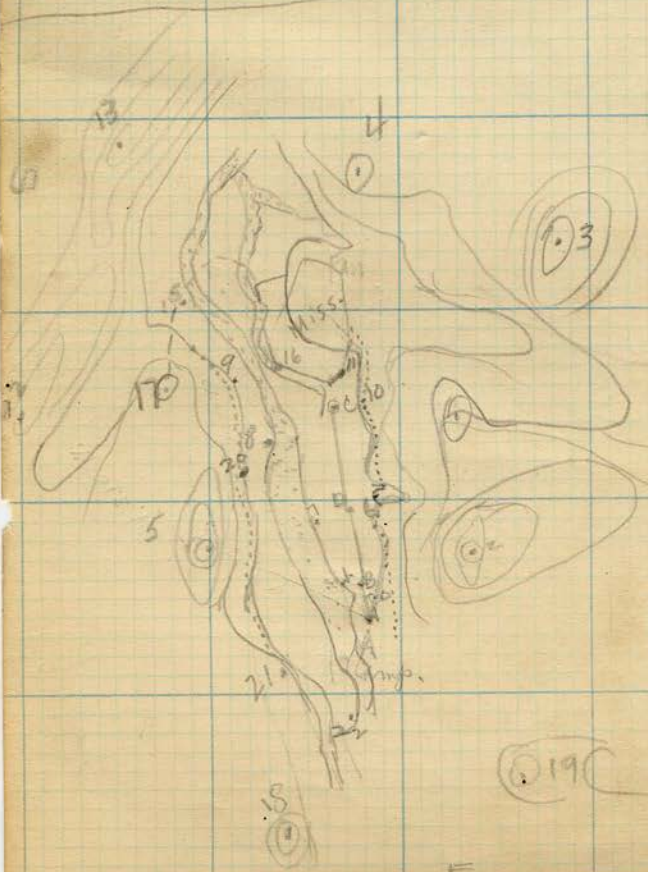
Declin. 14° E.

W

22. Edge of Terr. S. side  
cañon. N. 65° E. from E.  
N. 75° E. fr. A.

E. S. 35° W. from A. 58 yd

Western  
limit of  
good rock.  
W. much broken,  
rocky, green,  
pine,  
scrub oak.



(19)

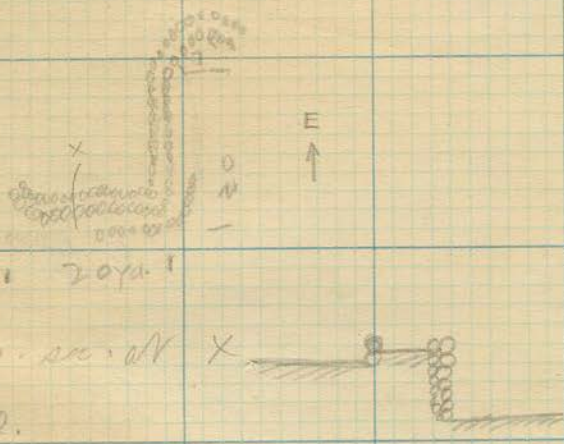
(20)  
H

E



Stone Structure, #6.

Walls up to 7' high;  $\frac{1}{2}$ ' thick. low floor  
inside 5' above surrounding ground.



Found piece of pottery by white rock.  
" piece of tile brick (?) near camp.

Weg. Willow thicket in canon.

Sage on valley floor. Some sand rock on edge, with rocks.

Monte on slopes, well exposed Scotland Parypinon.

4 or 5 miles in length: \*\*\*\*\*)

Anim. Damnable living flea.

(21)

(18)

Cult. N. 40° E. 550m camp, 100 yd., is  
in the larger spring. The sequia passes  
almost to it, passing 40' above camp.  
veg. Lots of green grass and N. springs; bog  
mossing slowly into cañon. Around S.  
Spring, ferns.

Cult. They get their water from these springs.  
No sequia beyond (ridge)

(mapped from 5:30 AM  
to 12:55 PM, when  
we left)

Pers. Completing the work at the mission,  
we packed up and struck west at 12:55.  
(15 min. to get to the edge mission). There a lot of  
terribly steep, rocky trails and to San Pedro  
at 4:15. San Pedro is a delightful  
little place, with one family, of Dr. Murillo.  
we were the first outsiders they had  
seen for 3 weeks. They are very comfortable  
with two adobes and shaded soil of patio,  
which they know so well how to make  
comfortable and cool. They fed us on delicious  
figs & apricots. Too cold for oranges, he says.  
Then on a short distance down the  
San Pedro Master River, & Camp at 6:00.  
Clim. No snow at San Pedro. 6" at  
a time at La Mission.

Veget. We left the monte after about  
an hour's distance from La Misión,  
and entered a more sparse soft vegetation.  
In Cañon bottom (S. P. M. Cañon),  
at about 4000', we struck cottonwoods  
& sycamores. Maqui, too, very  
abundant. Altogether we saw two  
metates & manos de metate along the  
creek, apparently in actual use.

Geog. Mostly schists & gneisses we  
passed through, after leaving the slightly  
metamorphosed granite.

Cult. Family of 7 children Munillo.

Pers. Left camp 2 mi. NW of San  
Antonio at 6 A.M. (up at 4:30). Two old  
quined horses at hand. "Jingle bells  
of the spores & pinole cups in saddle  
bags. Saw pulled pack animal  
& took notes. If I don't follow I  
lose, pack mule pulls, if I do, I  
get full of dust.  
Next climb out of San Antonio.