

San Diego, California,  
September 17, 1923.

Colonel Ed Fletcher,  
San Diego, Calif.

My dear Colonel Fletcher:

Confirming our interview this morning, will say I came to California with the consent of the Pinal County Board of Supervisors to find out what the real situation is in the matter of supporting our plan of building a road Casa Grande to Gila Bend, the connecting link with the coast.

Pinal County has very little money but it is vitally interested in this work. It has nine trucks available which it will immediately put to use in surfacing the road, we have the equipment to build the road and what we need is finances to furnish supplies while the work is under construction.

I am of the opinion that we can build a graded highway Casa Grande to Gila Bend and surface it where needed, completing same by January 1st, 1924, with the proper backing. I find all of Southern Arizona a unit supporting this effort by individual work and subscriptions, as it is out of the question to get state aid from Phoenix, for reasons which you well know. I am heart and soul in this work and will be glad to give my time, without compensation, outside the county, until the road is completed. Southern Arizona as well as Southern California will be tremendously benefited by a direct route when this stretch of highway is completed.

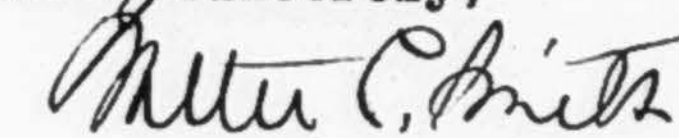
It will save 91 miles in distance for all of Southern Arizona to San Diego, and the road from Southern Arizona to Los Angeles, including Tucson, Douglas and Bisbee, will be 24 or 25 miles shorter via Yuma than via the present route Phoenix to Blythe. Excepting a few miles yet to be built the highway is completed Gila Bend to Yuma.

The construction of this highway is in no sense in opposition to Maricopa County. It is putting in first-class condition the highway along the Southern Pacific Railroad which is now being used for trans-continental travel. Southern Arizona is going to put up 80 percent of this money and we certainly appreciate Southern California's generous donation toward helping us complete this missing link at an early date.

-2-

I suggest that any subscriptions from San Diego County be paid to W. P. Clement, President of the Casa Grande Valley Bank, Casa Grande, Arizona, who is very much interested in this work and is subscribing a liberal amount himself, and is a man of high standing.

Yours sincerely,



County Engineer  
Pinal County - Arizona



BOARD OF SUPERVISORS  
 H.C. COOK, CHAIRMAN  
 ROBERT B. ROE, MEMBER  
 GEORGE W. SIGLER, MEMBER  
 C.M. BENTLEY, CLERK

ENGINEERING DEPARTMENT  
 WALTER C. SMITH, COUNTY ENGINEER  
 ROBERT B. ROE, ASST. ENGINEER  
 GEORGE W. SIGLER, CLERK

# PINAL COUNTY HIGHWAY DEPARTMENT FLORENCE, ARIZONA

September 26, 1923.

Colonel Ed Fletcher,  
 San Diego, California.

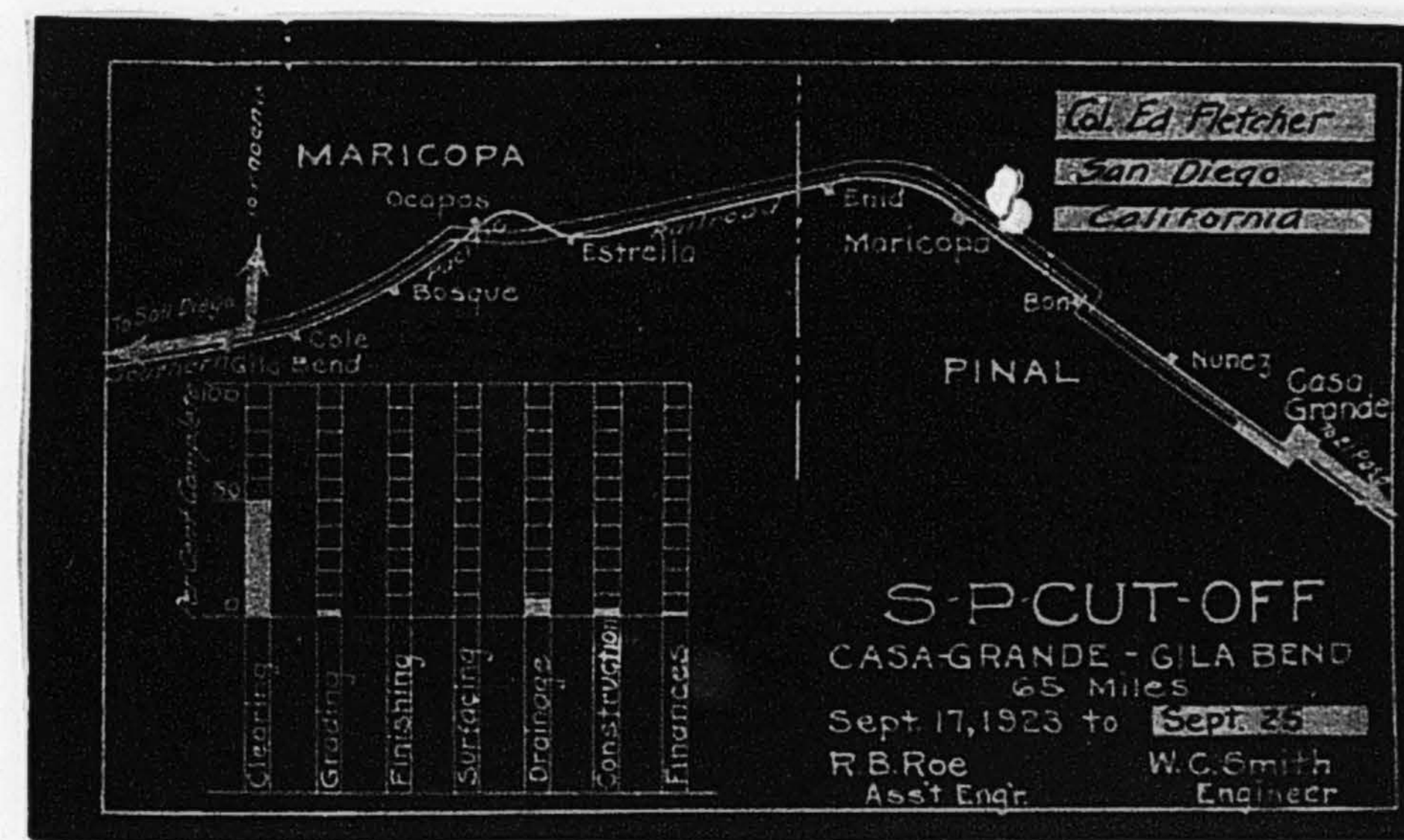
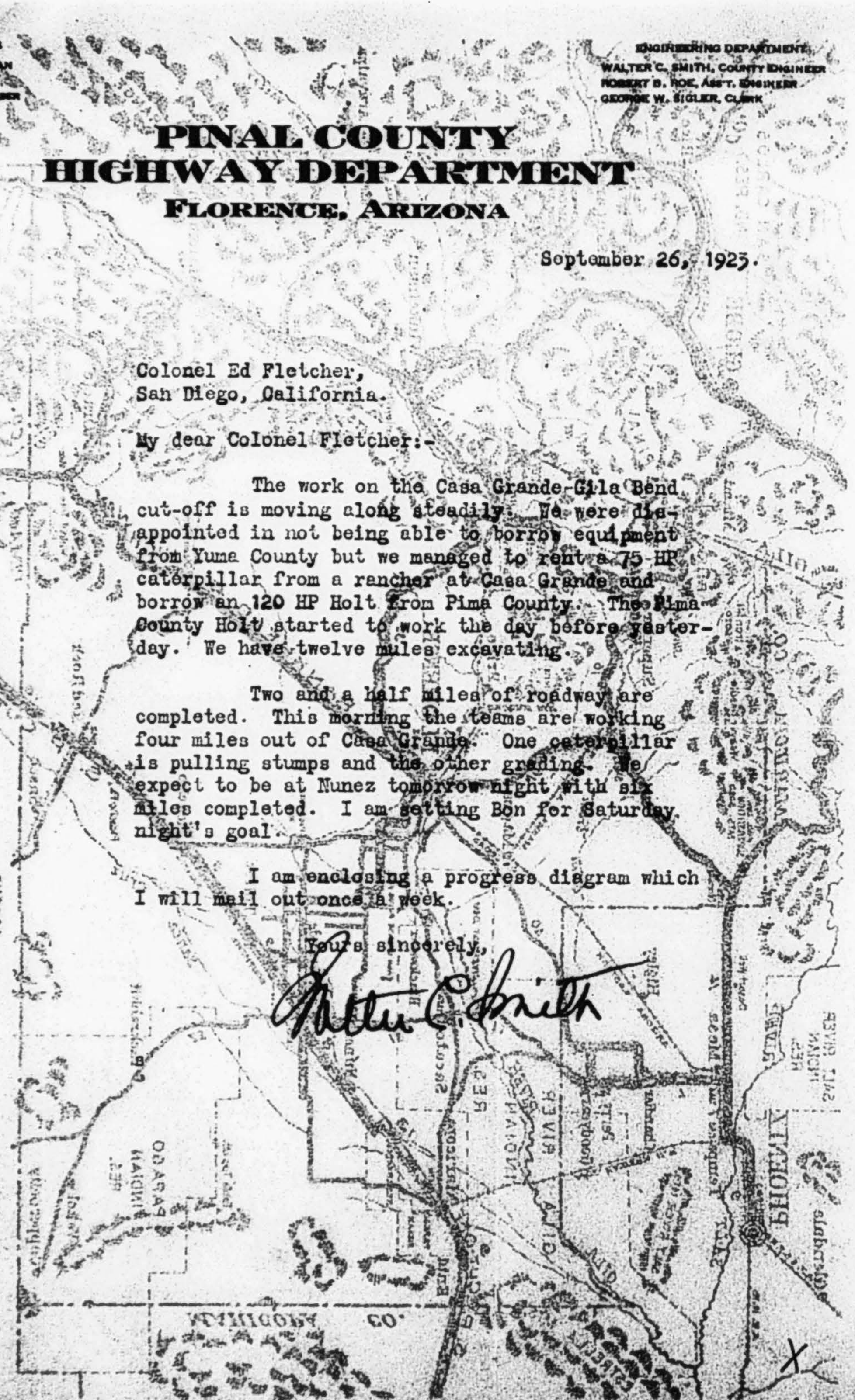
My dear Colonel Fletcher:-

The work on the Casa Grande-Gila Bend cut-off is moving along steadily. We were disappointed in not being able to borrow equipment from Yuma County but we managed to rent a 75 HP caterpillar from a rancher at Casa Grande and borrow an 120 HP Holt from Pima County. The Pima County Holt started to work the day before yesterday. We have twelve miles excavating.

Two and a half miles of roadway are completed. This morning the teams are working four miles out of Casa Grande. One caterpillar is pulling stumps and the other grading. We expect to be at Nunez tomorrow night with six miles completed. I am getting Bon for Saturday night's goal.

I am enclosing a progress diagram which I will mail out once a week.

Yours sincerely,  
*Walter C. Smith*





**PINAL COUNTY  
HIGHWAY DEPARTMENT  
FLORENCE, ARIZONA**

October 1, 1923.

Colonel Ed Fletcher,  
San Diego, California.

My dear Colonel Fletcher:-

In my last letter to you I set the goal for the 29th at Bon. The boys stopped work a mile west of Nunez. They did well. They had a mile and a half of ground literally covered with heavy stumps which kept one caterpillar busy.

Seven miles of roadway are completed. This morning the teams are working between Nunez and Bon. The right of way is practically free from stumps so both Holts will be grading ahead of the teams. I expect to find the boys at Bon when I run over there on Wednesday and at the close of day on Saturday I would like to see them wading through the dry lake east of Maricopa. There are several large washes to cross in the Santa Cruz bottoms which will slow up the work.

I believe we have stirred up some excitement along the line. The state highway department has amended their bond program to include the "cut-off" and I have invitations on my desk to attend two road conferences at Miami and Globe on the 12th and 13th. There is a movement on foot to attract the tourists on the Globe-Miami-Phoenix route. I believe that our efforts will hasten the completion of the Aztec-Piedra stretch in Yuma and Maricopa counties and carry the first improved road from Arizona to California via Yuma and San Diego.

Yours sincerely,

*Walter C. Smith*

8

**PINAL COUNTY  
HIGHWAY DEPARTMENT  
FLORENCE, ARIZONA**

October 7, 1923.

Colonel Ed Fletcher,  
San Diego, California.

My dear Colonel Fletcher:-

At the close of day yesterday we had fifteen miles of grade completed on the Casa Grande-Gila Bend cut-off. Two additional miles were marked out ready to plow. The teams had completed the work at the washes up to Bon and had started to build the approaches to the new highway crossing over the Southern Pacific tracks at that point.

Monday we will move the corrals to Bon and the caterpillar crews to Maricopa. Tomorrow the teams will return to their grading at the crossing; one caterpillar will complete clearing the main Santa Cruz channel three miles west of Bon and the other will pick up the grading on the stretch already marked. In the afternoon both Holts should be grading and Saturday should find us very close to the town of Maricopa.

We are now working in the dry lakes. Practically all of the ground we have covered will shape up well after a rain and carry the traffic without additional surfacing. Ahead of us in Pinal County are eight miles of silt. The type and class of surfacing will be determined by the success Mr. Hunt has in his collections.

Yours sincerely,

*Walter C. Smith*

*W. C. Smith*



Send to each subscriber also  
copy to Baron Long -

Enclosed find weekly report of the county engineer of Pinal County, covering the construction of the cut-off. You will be glad to know that the State Engineer of Arizona, for the first time since the work commenced, knowing we are determined to complete it, has about faced and publicly stated in the newspapers at Phoenix that the highway should be built and has this last week furnished a caterpillar and crew to help along the good work.

He states it should be a part of the state highway system.

The construction of this road has been the stumbling block of San Diego for years, and ##### its absolute completion is now assured by cooperative effort.

Mr. Lin Shaw, former supervisor at Holtville, made the statement at the Borderland Highway Meeting last week that four years ago there were only one or two machines a day coming thru Yuma, that this year ##### there have been a minimum of 50 machines a day and a maximum of 75 or 80. The travel is commencing to come our way, but we cannot expect our proper quota of 300 or 400 machines a day until we complete the 17 mile gap in California, funds for which have been provided; the 22 mile gap between Phoenix and Yuma, contracts for which will be let this month and the Southern Pacific cut-off, so-called, 56 miles in length between Casa Grande and Gila Bend, following the Southern Pacific Railroad, which we are now constructing by private effort, owing to the fact that 38 miles of it is in Maricopa County.

All the supervisors in Maricopa County live in and around Phoenix, and Phoenix is deadly opposed to the construction of this road, so the remarkable thing is that Pinal County, Cochise County, Pima County, Yuma County Imperial County and San Diego County have practically raised the necessary funds to complete the 38 mile stretch by private subscription in Maricopa County, which Maricopa County refuses to build.

Thanking you for your hearty cooperation, I am  
Yours truly,

October 8, 1923.

Mr. Walter C. Smith, County Engineer,  
Pinal County,  
Florence, Arizona.

My dear Mr. Smith:

Have just returned from New York, but in the meantime my boys have been working. Enclosed find copy of letter to President Clement for your information - jst to let you know we are on the job.

Don't fail to keep us posted each week.

With kind regards, I am

Sincerely yours,

EF:KLM

Dictated Oct. 5th



**PINAL COUNTY  
HIGHWAY DEPARTMENT  
FLORENCE, ARIZONA**

October 15, 1923.

Colonel Ed Fletcher,  
San Diego, California.

My dear Colonel Fletcher:-

We certainly appreciate the aid you are giving us from Southern California. We are pressing toward Gila Bend with our "cut-off" as fast as we can. Though the progress diagram for the 13th enclosed shows us not quite in Maricopa, we are just outside the town.

Saturday we took the day off to repair equipment. On Friday night we had twenty miles of roadway completed and another mile plowed. The teams had finished their work at the Bon crossing.

Today the corrals were moved to the Santa Cruz channels west of Bon and the caterpillars doubled back over the dry lakes east of Maricopa.

Tomorrow we will plow through the townsite of Maricopa. West of town the first four miles will be difficult. Then we are across the Santa Cruz bottoms and the worst is over. We ought to be at the end of our county line by the first of November.

I attended both road conferences at Miami and Globe last week. The Miami conference, called by Phoenix people, was ostensibly a gathering to boost for a paved road through Globe, Miami, Superior and Phoenix to the coast. A Central Arizona Highway Association was organized and confidence in the governor's highway program expressed by resolution. The meeting developed into a fight between the Mecca-Blythe and Yuma supporters with the result that the proposed central highway was stopped at Phoenix and the continuation of the route westward left to a legislative committee.

Saturday's meeting at Globe resulted in the formation of a local Atlantic-Pacific Highway Association, the appointment of directors and the adoption of the Atlantic-Pacific route through Phoenix and Blythe to Los Angeles.

Sincerely yours,

*Walter C. Smith*  
County Engineer

**PINAL COUNTY  
HIGHWAY DEPARTMENT  
FLORENCE, ARIZONA**

October 22, 1923.

Colonel Ed Fletcher,  
San Diego, California.

My dear Colonel Fletcher:-

I have your letter of the nineteenth. Enclosed is a clipping from the Arizona Republican, October 16th issue, which gives an account of the Miami road conference.

The enclosed progress diagram of the Casa Grande-Gila Bend "cut-off" shows us west of Maricopa. We have almost twenty four miles of roadway completed and three and a half miles cleared of stumps ready to plow. Early in the week we doubled back and raised the grade over the dry lakes east of town.

The mule camp moved to Maricopa Saturday and will be working on the dips close to that town today. This morning both tractors will be plowing and grading through the cleared ground in the Santa Cruz channels west of Maricopa. By Saturday I believe we will be out of the river bottoms and on good ground again. I still believe we ought to be at the Maricopa County line by the first of November. I hope I may write you a week from today that we reached that goal on Saturday.

Tomorrow I am planning to go to Casa Grande and on toward Gila Bend to look over the ground in Maricopa County.

Sincerely yours,

*Walter C. Smith*

8  
Encl. 2

*14 all  
gone  
of 2.*

RECEIVED  
OCT 22 1923  
COUNTY ENGINEER  
WALTER C. SMITH  
FLORENCE, ARIZONA



**PINAL COUNTY  
HIGHWAY DEPARTMENT  
FLORENCE, ARIZONA**

October 29, 1923.

Colonel Ed Fletcher,  
San Diego, California.

My dear Colonel Fletcher:-

I cannot write you today that we reached the Maricopa County line on Saturday. I can say that we reached Heaton, half way between Maricopa and the county line, with a completed grade.

This morning both Holts started plowing and grading over the final stretch in our county. The worst part of the road is behind us and, barring accidents, we should be at the county line on the first of November.

I drove over the road in Maricopa County last Tuesday with Mr. Hunt. He spoke about hiring a man to maintain the old road in Maricopa County for the present, saying that I ought to use all available subscriptions to surface the dry lakes in Pinal County. Hunt has been busy at the east end and collections have fallen off.

We are paying our own way in this work and I expect to draw on the county for everything up to the next pay day on the fifth of November. My withdrawals from subscriptions amount to \$230 but very shortly I expect to dig down deep into the fund.

Sincerely yours,

*Walter C. Smith*

8  
Encl. 1

Copies sent to:

Hotelmen's Ass'n., Claus Spreckels,  
Sam Porter, M. F. Heller, Material  
Men's Ass'n., Mrs. F. M. White, Globe  
Grain & Milling Co., Sanitary Ice  
Cream Co., Schiefer & Son, Brunswig  
Drug Co., Western Metal Supply Co.,  
Wholesale Grocers Ass'n., F. M. White,  
E. B. Gould, Jack Thompson, Stanley  
Hale and Baron Long



**PINAL COUNTY  
HIGHWAY DEPARTMENT  
FLORENCE, ARIZONA**

October 31, 1923.

Colonel Ed Fletcher,  
San Diego, California.

My dear Colonel Fletcher:-

This afternoon I drove to the Maricopa County line and found that the ground had been broken ahead of me and the grade practically complete to the line.

It rained at Enid late in the afternoon and the shower followed me back to Florence. If the rain does not interfere with the grading, the boys will complete the rough grade in the morning and start back toward Casa Grande shaping up preparatory to surfacing.

I am writing to Mr. Hunt at Willcox asking him to get back on the collections.

Sincerely yours,

*Walter C. Smith*

8

*Return to Mr. Fletcher*

**PINAL COUNTY  
HIGHWAY DEPARTMENT  
FLORENCE, ARIZONA**

November 5, 1923.

Colonel Ed Fletcher,  
San Diego, California.

My dear Colonel Fletcher:-

Since writing to you on the 31st, we have been working back toward Casa Grande picking up the grade in places and smoothing up the balance. The rains we had the latter part of last week helped to pack the grade and it is now possible to get through from Casa Grande to the Maricopa County line along the "cut-off". Traveling is rather rough but I am throwing the road open to light traffic to help in the packing in anticipation of another rain before the month passes.

I have been waiting for Mr. Hunt to appear on the scene. He has been gone now for more than two weeks. I am going to try to get out and do some collecting and intend to make the run from Tucson to Yuma again soon. Word comes to me of the enthusiasm that Hunt is stirring toward the east but enthusiasm alone is not going to carry this scheme through. We need money and we need it now. I want to find Mr. Hunt and put a subscription blank into his hands with a full pen. The hardest thirty miles of rough grade is now built but eight miles of that will need a surface to make it passable throughout all seasons.

My copy of the El Paso Herald has just come to me. The title page carries one column of a three column article entitled "MULE CREEK WAY TO CLIFTON, ARIZONA, EASY TO TRAVEL". The article describes the route from El Paso by way of Silver City, New Mexico, and Clifton to Phoenix and California. The Phoenix papers have given no publicity to our southern short-cuts although the natives are not unaware of what is going on along the Southern Pacific. I have kept things so quiet in this county that Superior scouts have returned home quite surprised at our progress. I read an article in the November 3rd issue of the El Paso Herald in which the GILA BEND HIGHWAY was given publicity and the fact mentioned that a road was being constructed from Gila Bend to Casa Grande mainly through private subscriptions. The article stated that Phoenix would be side-tracked in borderland traffic. I understand that a similar article appeared in the Sunday Los Angeles Times.

The progress diagram enclosed shows little progress but we have not slackened and are pushing along steadily.

Sincerely yours,

*Walter C. Smith*

8



BOARD OF SUPERVISORS  
H. H. McDONALD, CHAIRMAN  
ROBERT DENTON, MEMBER  
GEORGE E. TRUMAN, MEMBER  
C. H. NIEMEYER, CLERK

ENGINEERING DEPARTMENT  
WALTER C. SMITH, COUNTY ENGINEER  
ROBERT B. ROE, ASS'T. ENGINEER  
GEORGE W. SIGLER, CLERK

**PINAL COUNTY  
HIGHWAY DEPARTMENT  
FLORENCE, ARIZONA**

November 13, 1923.

Colonel Ed Fletcher,  
San Diego, California.

My dear Colonel Fletcher:-

We have had several good rains. Our S. P. Cut-Off was soaked and is impassable.

Our trucks and tractor left Maricopa yesterday for Casa Grande over another route. We hope to start in on the finish grading tomorrow. We can probably do five miles a day and by the time we reach Maricopa the lakes will be sufficiently dry to work over.

We have completed the team work in Pinal County and are moving into Maricopa County. I have contracted to have a thirty foot right-of-way cleared in Maricopa County and have stipulated that the clearing shall be complete within three weeks. By the time that we reach the Maricopa County line with our tools there will be sufficient clearing done to enable us to go right through to Gila Bend dragging the rails and clearing the underbrush.

I wrote you on the 29th of last month that Mr. Hunt and I had discussed the advisability of using all subscriptions in Pinal County on the dry lakes. I have considered the matter and believe that it would be better to go on to Gila Bend. It is generally supposed that this cut-off has been built out of the subscriptions although that is not a fact. The withdrawals have not exceeded \$230 to date. I do believe, though, that it will be easier to raise the necessary funds if I continue on to Gila Bend using the available subscriptions for that work. Work on the remaining section in Maricopa will arouse the opposition. If we succeed in pushing a trail through to Gila Bend, half the fight is won. Public opinion may force Maricopa to do something in her own county and will give the state highway officials moral support if they should choose to grant us aid in our project.

We have not been able to accomplish much this past week as I have had to take the boys away from the cut-off to drag our roads.

Colonel Ed Fletcher-2-11 13.23

I am expecting to see Mr. Hunt almost any day now as I heard that he started westward from Willcox on Saturday.

I have been appointed a member of the legislative committee of the Central Arizona Good Roads Association and will attend the first meeting at Phoenix on Thursday.

Sincerely yours,

*Walter C. Smith*



**PINAL COUNTY  
HIGHWAY DEPARTMENT  
FLORENCE, ARIZONA**

November 19, 1923.

Colonel Ed Fletcher,  
San Diego, California.

My dear Colonel Fletcher:-

Thank you for the copy of the November 13th letter to Mr. Clements. When the Clearing House committee sends in the \$500 I believe San Diego has subscribed \$1515 toward the construction of the Casa Grande-Gila Bend cut-off. This is surely fine and I am well pleased.

Your question as to what the State of Arizona is doing can be answered by one word and that word is "nothing". I have been unable to borrow even a caterpillar.

"All roads lead to Phoenix" was adopted as a slogan at the meeting of the legislative committee of the Central Arizona Good Roads Association. A more appropriate slogan would be "We are for all roads that lead to Phoenix". At the meeting the Maricopa delegation unmistakably showed their opposition to the construction of the Casa Grande-Gila Bend road. No mention was made of what we are now doing but the remarks were directed to the governor's proposed \$20,000,000 bond program. Mark Dunbar stated that he and Mayor Whitney of Phoenix had waited upon the governor and had shown him and convinced him that there was no good argument for the cut-off, that it started nowhere and ended nowhere and was a distinct detriment to Phoenix. He said that the governor thereupon struck the road off his program. At the meeting Dunbar, who is editor of DUNBAR'S WEEKLY, attempted to draw me into a discussion of the cut-off but I refused to be drawn into an argument. I later learned that the governor had actually withdrawn the Casa Grande-Gila Bend road from his program.

The Maricopa delegation also informed me that there was serious objection to the inclusion of the Tucson-Casa Grande highway in the program for improvement and intimated that we should be content with the Casa Grande-Chandler road, for the construction of which we have already provided through our seventy-five per cent fund.

Colonel Ed Fletcher-2-11.19.23

What would that Maricopa delegation say if they knew that we have already cleared eleven miles of right-of-way in Maricopa County beyond our line and that our teams have also worked over the washes along the cut-off for that distance.

We are traveling westward steadily. The rains have delayed our work lately. We have eleven men working in Maricopa County with ten mules and trucks. We are working westward from Casa Grande with the tractor, blading and rolling the new grade.

Mr. Hunt wired me Saturday from New Mexico saying that the nine-mile stretch in New Mexico was complete. This is splendid.

I am very much pleased with the interest that Southern California has taken in our road problems. Casa Grande has subscribed liberally in proportion to population. Tucson is slow. That is where Mr. Hunt can spend several days profitably.

Sincerely yours,

*Walter C. Smith*



**PINAL COUNTY  
HIGHWAY DEPARTMENT  
FLORENCE, ARIZONA**

November 21, 1923.

Nov. 19, 1923.

Mr. Walter C. Smith,  
County Engineer,  
Florence, Arizona.

My dear Mr. Smith:

Answering yours of the 13th, I absolutely agree with you that you should push thru the road Gila Bend first, no matter how rough it is, and it would be a mistake to take the funds raised and spend it in Pinal County. I have sent over \$1,000 to Mr. Clements and the banks of this city will send \$500 more to complete our obligation some day this week.

Am glad to know that you are a member of the legislative committee of the Good Roads Association. Please keep me posted.

We dedicate the Pacific Milestone here today. President Coolidge has asked me to be his personal representative and has sent his address.

Yours very truly,

EP:KJM

Colonel Ed Fletcher,  
San Diego, California.

My dear Colonel Fletcher:-

I am glad that you agree with me in my plan to go through to Gila Bend. Fortunately the character of the soil in Maricopa County is such that we can make a fairly good showing for little money.

I went to Tucson Monday to stir up a little enthusiasm. Monte Mansfield was busy with Kiwanis Club work and could not be found. I did see and talk with the president of the motor trades association. He promised me that he and Monte would have something concrete to offer me later in the week.

There are some in Maricopa County, and Senator Wilkinson is one, who would trade the entire \$20,000,000 road program for a road from Phoenix to California by way of Blythe. Major Midgley of Yavapai County is for this route. He believes that California will change her plans and meet Arizona at Blythe if Arizona builds out from Phoenix instead of meeting us at Yuma and Needles in accordance with a recently published decision.

The Maricopa papers have not mentioned the work we are doing on the cut-off but I am looking forward to this week's issue of DUNBAR'S WEEKLY. If Dunbar is true to form, his comment will be interesting reading.

The gap between Casa Grande and that new Pacific Milestone is closing slowly but steadily. You of San Diego have been generous and I, for one, will do all in my power to return the compliment.

Sincerely yours,

*Walter C. Smith*



November 21, 1925.

Mr. Walter C. Smith,  
Pinal County Highway Dept.,  
Florence, Arizona.

My dear Smith:

Answering yours of the 19th, will say I appeared before the Clearing House Committee of the banks yesterday, and after a fifteen minutes' talk, got the \$500 from them, which I am sending Mr. Clements tomorrow.

You will not be quoted, but please keep me posted with all information both good and bad.

Have Mr. Clements write me a letter stating how much has been promised, from whom, and how much has been paid.

I may be able to help you stir up the other crowd and make Douglas and Bisbee recind their former action. But keep this confidential. The least you mention my name, the better it is for you and your whole project. What has been done in Imperial Valley and Yuma? My suggestion to you is not to do any talking, get a fairly good road blazed out, and build to Gila Bend. Then get the Casa Grande-Maricopa committee to invite State Engineer Goodman down there, and if possible, the Governor, and take them over the road. This will open their eyes.

How long will it take you to blaze a fairly good road through to Gila Bend, and how much money have you to do it with? It is going to be almost impossible to do anything more in San Diego. We have so many calls on us, but I want all the facts.

Yours very truly,

EF:AH

BOARD OF SUPERVISORS  
H. H. McDONALD, CHAIRMAN  
ROBERT DENTON, MEMBER  
GEORGE E. TRUMAN, MEMBER  
C. H. NIEMEYER, CLERK

ENGINEERING DEPARTMENT  
WALTER C. SMITH, COUNTY ENGINEER  
ROBERT B. ROE, ASST. ENGINEER  
GEORGE W. SIGLER, CLERK

**PINAL COUNTY  
HIGHWAY DEPARTMENT  
FLORENCE, ARIZONA**

November 23, 1925.

Colonel Ed Fletcher,  
San Diego, California.

My dear Colonel Fletcher:-

I will have Mr. Clements make you an abstract of the subscription fund for the Casa Grande-Gila Bend cut-off.

Yesterday I spent the afternoon over in Maricopa County and ran the location to Ocapos which is about twenty miles from Gila Bend. The clearing is complete to Estrella and the teams are working five miles east of that point.

In Maricopa County I plan to spend about \$100 a mile. There are thirty five miles and I have approximately \$3000 in the bank. We are clearing a thirty five foot right of way. We will smooth up the washes and build such dikes as are necessary to divert the flood waters into the new channels. By the time the clearing and team work is complete we hope to have finished blading, rolling and dragging from Casa Grande to the Maricopa County line. We will then proceed to Gila Bend with the tractor dragging with heavy I-beams.

As there will be no plowing the road-bed will remain packed. All we can hope to do with the drags will be to knock off the humps and fill in the depressions. We have followed this procedure in this county under similar conditions and have had excellent results. This type of road is immediately open to traffic.

I hope that the road to Gila Bend will be complete by December fifteenth. In Pinal County the road in its present condition will be impassable in the dips after heavy rains. We hope to find \$2000 to place rock in the bottoms of the washes to correct this.

There is no Casa Grande-Maricopa committee but, as you suggest, I will arrange to get Engineer Goodman and the Governor to ride over the road to Gila Bend as soon as the Maricopa end is complete. I will invite Mr. Clements, our Casa Grande Supervisor, Mr. Denton, and our Pinal representative on the Arizona Good Roads Association, to accompany us.

I am saying nothing and discouraging general publicity.



Colonel Ed Fletcher 2-11.23.23

I do not know what is being done in Imperial Valley and Yuma. I have not been back in that district since our meeting in San Diego. Mr. Hunt told me that he had stopped at El Centro, Holtville, Calexico, Brawley and Yuma and that they had "all gone big". He did not, however, give me the names of those interested in the project so I have not been able to keep them posted as to the progress we have made.

If you think that I could help the cause along by making another trip, I would be more than glad to do so early next month.

Sincerely yours,

*Walter C. Smith*

8

BOARD OF SUPERVISORS  
H. H. McDONALD, CHAIRMAN  
ROBERT DENTON, MEMBER  
GEORGE E. TRUMAN, MEMBER  
C. H. NIEMEYER, CLERK

ENGINEERING DEPARTMENT  
WALTER C. SMITH, COUNTY ENGINEER  
ROBERT B. ROE, ASS'T. ENGINEER  
GEORGE W. SIGLER, CLERK

**PINAL COUNTY  
HIGHWAY DEPARTMENT  
FLORENCE, ARIZONA**

November 27, 1923.

Colonel Ed Fletcher,  
San Diego, California.

My dear Colonel Fletcher:-

The work on the S. P. Cut-Off goes ahead smoothly. The clearing is now practically complete to Ocapos and today the location is being carried on to Gila Bend.

I have drawn on the Tucson fund to pay for clearing and grubbing fourteen miles in Maricopa County and have notified Monte Mansfield of the withdrawal.

I have heard no comments about our work lately other than expressions of satisfaction and surprise. Dunbar's Weekly made no comment on the Casa Grande-Gila Bend road.

I expect to run over to Tucson tomorrow to raise additional funds. I feel that this work should not be held up for lack of money in its present stage. I have not seen Mr. Hunt since his return from San Diego the week of the Borderland Highway meeting nor have I received any contributions through him.

I am enclosing the progress diagram for the week ending November 26th.

Sincerely yours,

*Walter C. Smith*

8



November 27, 1923.

Mr. Walter C. Smith,  
Pinal County Highway Department,  
Florence, Arizona.

My dear Mr. Smith:

I am amazed to know you have so little money to continue the work, but nevertheless you are absolutely right. Brush out and drag the road the entire distance so as to make it passable and spend as much more money on it thereafter as you can get in diverting the flood waters and filling the depressions.

Tucson should get behind this proposition strong.

What about this man Hunt? Is he making good? As soon as I get a letter from you, or Mr. Clements, showing the amount of money that has been subscribed, I will be in a position to make a recommendation. Let me know what the pledges are and whether Hunt is making good. I received a telegram from the Tombstone Chamber of Commerce, also from Chief of Police at Tombstone asking whether Hunt represented the Chamber of Commerce of San Diego and Ed Fletcher. I wired back that he did not represent either of us and hope that he is not claiming to represent me over there.

I wired, also the Chamber of Commerce wired that San Diego citizens had liberally subscribed, had confidence in Mr. Hunt, and we were sending in money to Mr. Clement and recommended they get in touch with Mr. Clement, president of the Casa Grande Valley bank. You had better get in touch with Clement immediately, if you will, please, and find out what the mix-up is, if any and let me know. I think it is important for your own protection and for Mr. Clement's that you get from Hunt a list of the men who are subscribing or have promised to subscribe and keep a check on Hunt. I think it very imperative that you and Hunt together visit Yuma, that you see Norman Conway, the county engineer at Yuma, also the Yuma crowd and Imperial Valley crowd and I believe they will all subscribe something. You should also get in touch with Mr. Monte



Mansfeld at Tucson and get a committee from Tucson over the road.

It is a good better if we can spend \$200 or \$300 a mile on the road than \$100. It is going to surprise the governor and the state engineer to see the amount of work that has been completed, and the main thing is to get that established as one of the state highways as you suggest. I believe the state engineer will recognize its value.

I do appreciate your letters keeping me posted.

Yours very truly,

EP:KLM

November 27, 1923.

Mr. Walter C. Smith,  
County Engineer,  
Florence, Arizona.

My dear Mr. Smith:

Enclosed find copy of letter from  
Mr. Gunnis, secretary of the Clearing House Association  
of San Diego.

Yours very truly,

EP:KLM



**PINAL COUNTY  
HIGHWAY DEPARTMENT  
FLORENCE, ARIZONA**

November 29, 1923.

Colonel Ed Fletcher,  
San Diego, California.

My dear Colonel Fletcher:-

I spent two or three hours with Monte Mansfield in Tucson yesterday. Together we went to Mr. Herbert Drachman of the Realty Board and enlisted his support for our project. I explained the situation and gave him the facts. Tucson will rush another thousand dollars into the bank at once and do better than that.

Both Mr. Mansfield and Mr. Drachman promised to get a party together and take a trip over the road on a Sunday. I am doing the best I can with the limited funds at my command and I want you to understand what it is I am attempting to accomplish. I have reported the progress to you and others periodically but I would like you to hear what Mansfield and the others think of the work.

Mr. Hunt had been to Tucson ahead of me on his way west. I telephoned to Mr. Clements to hold him at Casa Grande until I could follow up but he had already gone on to Yuma. My assistant and foreman met him at Estrella. They told me that Mr. Hunt seemed displeased that I had pressed on into Maricopa County and yet I found a wire from him on my arrival at Florence reading, "Better than I expected wire me instructions at Yuma". I could not reply to this as the telegraph office had already closed.

I do not know whether or not Mr. Hunt has been claiming to represent you. I cannot tell you about any of the subscriptions except those from San Diego, Casa Grande and Tucson. The San Diego and Casa Grande money is in the hands of Mr. Clements as trustee. The Tucson people preferred to place their subscriptions in a Tucson bank, the Consolidated National with Mr. R. E. Butler, trustee.

I am asking Mr. Clements to write you also.

Sincerely yours,

*Walter C. Smith*

**PINAL COUNTY  
HIGHWAY DEPARTMENT  
FLORENCE, ARIZONA**

December 3, 1923.

Colonel Ed Fletcher,  
San Diego, California.

My dear Colonel Fletcher:-

The clearing of our right of way is complete to Bosque, nine miles east of Gila Bend. Our teams are working east of Estrella in the washes. There are a number of small washes in this stretch.

In our own county the tractor crew is working near Maricopa, blading and rolling. I expect to have this finishing of the grade complete in another week and the tractor over in Maricopa County.

I hope to get away from here Thursday for several days to spend more time on our project. The supervisors are in session and I cannot leave until they adjourn. I am going to Tucson again to keep that crowd enthused and will try to work westward.

A few days ago a Maricopa County car, carrying three men, stopped where our teamsters were at work. They were evidently looking for information. They jokingly asked for a job and wanted to know who was doing the work and what the Pinal County equipment was doing in Maricopa County.

Our progress diagram for December 3rd shows us a little closer to our goal.

Sincerely yours,

*Walter C. Smith*



December 4, 1923.

Mr. Walter O. Smith,  
County Engineer,  
Florence, Arizona.

My dear Mr. Smith:

Answering yours of the 27th of November, get Monte Mansfeld and a committee to go over the ground with you.

Hunt was here today and says he has not collected a dollar from anyone from that road but has been interested in getting the highway built along the S. P. from Lordsburg to the Arizona line, etc. We have not given a dollar to that fund and do not intend to. They will have to fight out their own battles. My advice to you is to go to Yuma and Imperial County, or write to them and arrange for a committee from Calexico, Holtville and El Centro to go over there and show them exactly what you are doing and I am sure you can get a good subscription from them to keep the work going.

Yours very truly,

EF:KLM

December  
Sixth  
1923

Mr. Walter O. Smith,  
County Engineer,  
Florence, Arizona.

My dear Mr. Smith:

I thank you for your letter of the 3rd, and am happy over the way you are handling the whole matter.

Yours very truly,

EF:AH



**PINAL COUNTY  
HIGHWAY DEPARTMENT  
FLORENCE, ARIZONA**

December 7, 1923.

Colonel Ed Fletcher,  
San Diego, California.

My dear Colonel Fletcher:-

Hunt was in Casa Grande yesterday. He, Mr. Clements and I had a long talk. Apparently his return trip through Imperial County and Yuma was unsuccessful. He says that he gave them the "S. O. S. call".

The "S. O. S. call" means that, if they do not kick through, he will change the routing and swing north west at Sentinel in Maricopa County to Aguas Calientes and across the desert and the Colorado River into Riverside County and Los Angeles, cutting out Yuma, Imperial County and San Diego.

It was Hunt's suggestion in the beginning that he spend a day or two in each town mentioned carrying the subscription lists about with him. I advanced expense money at four different times to finance him on trips to California and the east. In your letter, you say that he told you that "he has not collected a dollar for that road" but that he "has been interested in getting the highway built along the S. P. from Lordsburg to the Arizona line." It is just this failure to collect that I object to since we financed him for this purpose and have had no return.

We intend to carry through to Gila Bend. The clearing and grubbing will be complete to Gila Bend this evening and the teams are working at Estrella. As soon as the clearing contractor finishes his work I am hiring him and his four horses to help speed up the team work.

In our own county the tractor crew is working west of Maricopa and should be ready to go into Maricopa County in about one week.

I am trying to get Monte Mansfield to go over the ground with me on Sunday.

Sincerely yours,

*Walter C. Smith*

**PINAL COUNTY  
HIGHWAY DEPARTMENT  
FLORENCE, ARIZONA**

December 10, 1923.

Colonel Ed Fletcher,  
San Diego, California.

My dear Colonel Fletcher:-

The Tucson party postponed the trip over the cut-off on account of rain. I talked with Mansfield over the phone yesterday morning and he hopes to make the run on Wednesday instead and will bring Herbert Drachman and the presidents of the realty board and the merchants' association. We may have to postpone the trip again if it does not clear. This morning it is raining and a little snow is falling.

We are finishing up in Pinal County with the tractor. I drove over to Casa Grande yesterday to impress upon the boys the necessity of completing the rolling on Tuesday so that they could be working in Maricopa County on Wednesday when the committee drives through.

The team work is going more slowly than I anticipated. The boys are camped at Estrella. There are a number of wide washes to smooth up outside of Gila Bend but the worst ones are behind them.

I know that you can help us in Yuma, Imperial Valley and Tucson. I feel confident that we are going to succeed. I hope that Hunt has had a change of heart, pitches in and sees this thing through. He has outlined one advertising scheme to me; it has great possibilities.

No sun, therefore no progress diagram today.

Sincerely yours,

*Walter C. Smith*



December 11, 1923.

Mr. Walter C. Smith,  
Florence, Arizona.

My dear Mr. Smith:

Answering yours of December 7th, will say I think Hunt is too positive and jumps at conclusions too quickly. I question whether it is advisable for him to meet the hard headed business men of Imperial Valley.

Could Mr. Clements, yourself, and a committee of one or two others perhaps, meet me in Imperial Valley in a few days and let us hold a general meeting to discuss the subject? I want to help you in any way I can.

With kind regards,

Very sincerely yours,

EF:AH

cc - Mr. Clements

BOARD OF SUPERVISORS  
H. H. McDONALD, CHAIRMAN  
ROBERT DENTON, MEMBER  
GEORGE E. TRUMAN, MEMBER  
C. H. NIEMEYER, CLERK

ENGINEERING DEPARTMENT  
WALTER C. SMITH, COUNTY ENGINEER  
ROBERT B. ROE, ASST. ENGINEER  
GEORGE W. SIGLER, CLERK

**PINAL COUNTY  
HIGHWAY DEPARTMENT  
FLORENCE, ARIZONA**

December 12, 1923.

Colonel Ed Fletcher,  
San Diego, California.

My dear Colonel Fletcher:

Your letter of yesterday has just come. I am on my way to Casa Grande. I will see Mr. Clements and use the wires to arrange to meet you where and when it will be most convenient. The sooner the better.

I had a letter from Mr. M. C. Blanchard of Holtville and mailed a reply yesterday.

Rain and snow have prevented the Tucson party from making an inspection trip over the cut-off. I will try to have Mr. Mansfield join us to meet with the men of Imperial Valley.

I do most certainly appreciate your efforts to help us.

Sincerely yours,

*Walter C. Smith*



CLASS OF SERVICE	SYMBOL
Telegram	
Day Letter	Blue
Night Message	Nite
Night Letter	N L

If none of these three symbols appears after the check (number of words) this is a telegram. Otherwise its character is indicated by the symbol appearing after the check.

# WESTERN UNION TELEGRAM

NEWCOMB CARLTON, PRESIDENT      GEORGE W. E. ATKINS, FIRST VICE-PRESIDENT

CLASS OF SERVICE	SYMBOL
Telegram	
Day Letter	Blue
Night Message	Nite
Night Letter	N L

If none of these three symbols appears after the check (number of words) this is a telegram. Otherwise its character is indicated by the symbol appearing after the check.

RECEIVED AT PLAZA BUILDING, SAN DIEGO, CALIF., ALWAYS OPEN

1923 DEC 13 PM 6 20

SB653 41 NL

CASAGRANDE ARIZ 13

COL ED FLETCHER

552

FLETCHER BLDG SANDIEGO CALIF

CLEMENTS WILL BE IN YUMA ON BUSINESS SATURDAY STOP WIRE ME AT CASAGRANDE IF AGREEABLE TO YOU TO MEET US IN IMPERIAL VALLEY OR SANDIEGO MONDAY MORNING STOP AM READY TO LEAVE HERE TOMORROW NOON STOP MANSFIELD CANNOT GO WITH US.

WALTER C SMITH.

CLASS OF SERVICE DESIRED	
Telegram	
Day Letter	X
Night Message	
Night Letter	

Patrons should mark an X opposite the class of service desired. OTHERWISE THE MESSAGE WILL BE TRANSMITTED AS A FULL-RATE TELEGRAM

# WESTERN UNION TELEGRAM

NEWCOMB CARLTON, PRESIDENT      GEORGE W. E. ATKINS, FIRST VICE-PRESIDENT

Form 1206A

Receiver's No.
Check
Time Filed

Send the following message, subject to the terms on back hereof, which are hereby agreed to

December 14, 1923.

Walter C. Smith,  
Casa Grande, Arizona

Colonel Fletcher out of town today and Saturday but can see you Monday San Diego

ED FLETCHER COMPANY

Chg Fletcher Co

CLASS OF SERVICE	SYMBOL
Telegram	
Day Letter	Blue
Night Message	Nite
Night Letter	N L

If none of these three symbols appears after the check (number of words) this is a telegram. Otherwise its character is indicated by the symbol appearing after the check.

# WESTERN UNION TELEGRAM

NEWCOMB CARLTON, PRESIDENT      GEORGE W. E. ATKINS, FIRST VICE-PRESIDENT

CLASS OF SERVICE	SYMBOL
Telegram	
Day Letter	Blue
Night Message	Nite
Night Letter	N L

If none of these three symbols appears after the check (number of words) this is a telegram. Otherwise its character is indicated by the symbol appearing after the check.

RECEIVED AT PLAZA BUILDING, SAN DIEGO, CALIF., ALWAYS OPEN

1923 DEC 15 PM 2 56

SB523 9

GILA ARIZ 15 300P

COLONEL ED FLETCHER

336  
FLETCHER BLDG SANDIEGO CALIF

COMMITTEE ON ROAD STOP YUMA TONIGHT SANDIEGO MONDAY MORNING

WALTER C SMITH.



**PINAL COUNTY  
HIGHWAY DEPARTMENT  
FLORENCE, ARIZONA**

December 19, 1923.

Colonel Ed Fletcher,  
San Diego, California.

My dear Colonel Fletcher:

We returned last evening. Today it is raining. Again we will have to postpone the inspection trip and the Tucson committee may not see the road work until after Christmas.

I talked with Monte Mansfield over the phone this morning. He has asked me to go to Tucson on Friday to talk to the Kiwanis Club members at the luncheon hour.

At El Centro, Worthington of Calexico, Shaw of Holtville and Traverse of El Centro were present at our meeting. Each expressed a willingness to help.

In Yuma we talked with Mr. Caudry. He said he would get around in a few days and try to raise some money for us. We also spoke to Mr. Sanguinetti and Mr. Alexander, Secretary of the Chamber of Commerce.

At Gila Bend I stopped at the Gila Water Company's office. Mr. Gillespie was not there but I was assured that the company was willing to grant us a right of way over the canal and the adjoining lands.

We found the mule camp had moved on to Ocapos in our absence. The boys are working on the washes three miles east of that station.

One mile of grade was complete across the flats at the eastern limit of Maricopa County and the tractor crew ready to move on ahead.

I have drawn on the funds today for the payroll for the first half of the month, paid a few bills and struck a balance. I can probably run another week without over-drawing.

Colonel Ed Fletcher-2-12.19.23

I am taking the list of "highwaymen" you gave to Mr. Clements and am making a personal appeal for aid. I am also including Mr. Caudry and Mr. Franklin.

I am delegating all county work to my assistant and am going to throw my full time to the cut-off.

I feel that our trip to San Diego was a success. It was indeed a pleasure to meet with you all.

Hunt phoned to me from Casa Grande this morning to say that he was dropping the project and going to work for Los Angeles.

Sincerely yours,

*Walter C. Smith*

8

*copy to  
Mr. White*



**PINAL COUNTY  
HIGHWAY DEPARTMENT  
FLORENCE, ARIZONA**

December 27, 1923.

Colonel Ed Fletcher,  
San Diego, California.

My dear Colonel Fletcher:

I went to Tucson as I wrote you on the 19th. I spent a part of the afternoon with members of the Realty Board who gave me almost a hundred dollars.

I returned to Florence that evening and the following day went to Willcox. While down there I intended to make the run along the tracks to Lordsburg but the roads were impassable in the eastern and northern parts of the county and I did not take the trip to see the other cut-off. Willcox is, however, holding a rodeo New Year's Day for the benefit of the road which Hunt built at Stein's Pass.

During my absence the S. P. Cut-Off did not advance one foot. We have had rain almost continuously since my return from San Diego and the ground has been too heavy to work. I hope that the delay gives our friends a chance to recover from the holiday giving and brings a few more dollars into our treasury. Just as soon as it clears and is sufficiently dry to work, we will be off again. Then I hope to get the Tucson committee over the road.

Sincerely yours,

*Walter C. Smith*

63346  
42134  
-201

**PINAL COUNTY  
HIGHWAY DEPARTMENT  
FLORENCE, ARIZONA**

December 31, 1923.

Colonel Ed Fletcher,  
San Diego, California.

My dear Colonel Fletcher:

I have read your letter to Mr. Blanchard. The article in the Arizona Republican should prove an "eye-opener". I gave my copy to Monte Mansfeld. On the 20th and 22nd I wrote to Messrs. Blanchard, Shaw, Fawcett, Traverse, Worthington, Franklin, Caudry and Alexander calling attention to the article in the Phoenix paper and asking for immediate aid.

Can it be that Yuma is waking up? The telegram from Alexander looks good to me.

We are moving right along on the cut-off. The storms have stopped our grading crew but have not held up our teams entirely. We are working out of Bosque only nine miles from Gila Bend. I will not dare to prophecy their progress on account of the unsettled weather but we should be in Gila Bend and working at the bridge approaches and intersection with the Phoenix road by January 15th. I may hold up that work until we have the grade completed to the bridge site. It would be much easier to raise money to complete a bridge if the entire road were open for traffic up to the canal.

I am disappointed that we did not have the dips in our own county gravel surfaced when the rains started. The Gillespie Dam was impassable, the tunnel on the Superior-Miami highway has caved in, the Fish Creek bridge on the Roosevelt trail failed, the Gila River crossing at Sacaton has been flooded, and the detours on the Bankhead Highway north of Florence have been difficult to pull through on account of the muddy flats. This has left the Casa Grande-Gila Bend Cut-Off the connecting link with the coast. Cars have come through Casa Grande from east and west; some were stuck to their hubs in the dips unable to move either way. I sent teams to their rescue and signed the detours; Mr. Clements sent out a car with sandwiches and hot coffee. We lost the chance of a lifetime to establish our cut-off as the logical route.

I am delighted with Yuma's change of heart and I hope Imperial also will offer us aid. We owe it all to your efforts and are grateful for the aid you have so generously given us. I still feel confident that we will have the first completed route to the coast. Everything is in our favor.

With best wishes for the New Year, I am

Sincerely yours,

*Walter C. Smith*



January  
Fifth  
1924

Mr. Walter C. Smith,  
County Engineer,  
Pinal County,  
Florence, Arizona.

My dear Mr. Smith:

Thanks for your letter of the 31st ult.

I am sending copies of it to a number of our friends.

Yours sincerely,

EF:KIM

BOARD OF SUPERVISORS  
H. H. McDONALD, CHAIRMAN  
ROBERT DENTON, MEMBER  
GEORGE E. TRUMAN, MEMBER  
C. H. NIEMEYER, CLERK

ENGINEERING DEPARTMENT  
WALTER C. SMITH, COUNTY ENGINEER  
ROBERT B. ROE, ASST. ENGINEER  
GEORGE W. SIGLER, CLERK

**PINAL COUNTY  
HIGHWAY DEPARTMENT  
FLORENCE, ARIZONA**

January 5, 1924.

Colonel Ed Fletcher,  
San Diego, California.

My dear Colonel Fletcher:

The YUMA SUN says that you were in Yuma the other day. Did you see any of the boys while there? Did you hear the clink of any coins rolling into the cut-off fund?

I wish it had been possible for you to take Mr. White on to Gila Bend. I wish you could see the boys turning the sod for us. The tractor crew's poorest daily record since the rains has been a mile and a half of twenty foot grade. I have sent our construction foreman over to ride the grader and show them how to make two miles a day. He is the best blade man we have and he can turn the trick.

No money has come in from Yuma or Imperial or Tucson. I phoned Monte. Clements wired Alexander at Yuma. I am counting the days to completion of the cut-off. I am pinching the pennies to meet the bills. I am practically out of funds now but am pushing ahead, doing my level best to make the grade and trusting. The Board of Supervisors will meet Monday and I cannot get away until Wednesday. I am still trying to get Tucson over the ground. I had Monte on the phone this morning to arrange for an early meeting. I do not think they can meet me for several days. I shall have to run over to Tucson, rope and hog-tie a bunch, throw them into the car and make a forced run.

The Gillespie Dam is still closed to traffic and will remain so for another week. It does my heart good to see the cars coming through Casa Grande. I have not counted them but the hotel people at Maricopa have estimated that between seventy-five and a hundred and fifty a day are coming. The cut-off is somewhat rough but passable.

Sincerely yours,

*Walter C. Smith*



January 7, 1924.

Mr. Walter C. Smith,  
County Engineer,  
Pinal County, Ariz.

My dear Smith:

Inclosed find copy of letter from  
M. C. Blanchard of Holtville that is explanatory.

Mail a copy of your weekly report to  
Blanchard and all other Imperial Valley people  
so as to keep them posted.

Yours very truly,

EF:AH

BOARD OF SUPERVISORS  
H. H. McDONALD, CHAIRMAN  
ROBERT DENTON, MEMBER  
GEORGE E. TRUMAN, MEMBER  
C. H. NIEMEYER, CLERK

ENGINEERING DEPARTMENT  
WALTER C. SMITH, COUNTY ENGINEER  
ROBERT B. ROE, ASS'T. ENGINEER  
GEORGE W. SIGLER, CLERK

**PINAL COUNTY  
HIGHWAY DEPARTMENT  
FLORENCE, ARIZONA**

January 7, 1924.

Colonel Ed Fletcher,  
San Diego, California.

My dear Colonel Fletcher:

The copy of your letter of the 3rd to  
Mr. Clements with the good word from Yuma and Imperial  
Valley is a welcome reply to mine of the 5th which  
crossed it in the mails. I have exhausted my credit but  
pay day is eight days away and there is time for collection.

The weather continues clear and cold. Both  
crews are at work on the cut-off. The mule camp has been  
moved again and the teams are working within six miles of  
Gila Bend. I fully expect to have the dips finished by  
the fifteenth.

The tractor was down for repairs Saturday. I  
drove over to Casa Grande that evening with spare parts  
so that the change could be made yesterday and the work  
go forward today. I have not heard from the boys yet this  
morning. Saturday the tractor was grading in the vicinity  
of Mobile which is halfway between our county line and  
Estrella.

In our own county we are building a bridge over  
a troublesome wash east of the town of Maricopa. At  
present it is necessary to make a detour of three-quarters  
of a mile to cross a thirty-foot ditch. I want this com-  
pleted by the time the teams reach Gila Bend so that the  
boys over there can put in the approaches without delay.

Sincerely yours,

*Walter C. Smith*



PINAL COUNTY  
HIGHWAY DEPARTMENT

Florence, Arizona

January 7, 1924.

Colonel Ed Fletcher,  
San Diego, California.

My dear Colonel Fletcher:

The copy of your letter of the 3rd to Mr. Clements with the good word from Yuma and Imperial Valley is a welcome reply to mine of the 5th which crossed it in the mails. I have exhausted my credit but payday is eight days away and there is time for collection.

The weather continues clear and cold. Both crews are at work on the cut-off. The mule camp has been moved again and the teams are working within six miles of Gila Bend. I fully expect to have the dips finished by the fifteenth.

The tractor was down for repairs Saturday. I drove over to Casa Grande that evening with spare parts so that the change could be made yesterday and the work go forward today. I have not heard from the boys yet this morning. Saturday the tractor was grading in the vicinity of Mobile, which is halfway between our county line and Estrella.

In our own county we are building a bridge over a troublesome wash east of the town of Maricopa. At present it is necessary to make a detour of three-quarters of a mile to cross a thirty-foot ditch. I want this completed by the time the teams reach Gila Bend so that the boys over there can put in the approaches without delay.

Sincerely yours,  
WALTER C. SMITH

S

BOARD OF SUPERVISORS  
H. H. McDONALD, CHAIRMAN  
ROBERT DENTON, MEMBER  
GEORGE E. TRUMAN, MEMBER  
C. H. NIEMEYER, CLERK

ENGINEERING DEPARTMENT  
WALTER C. SMITH, COUNTY ENGINEER  
ROBERT B. ROE, ASST. ENGINEER  
GEORGE W. SIGLER, CLERK

PINAL COUNTY  
HIGHWAY DEPARTMENT  
FLORENCE, ARIZONA

January 10, 1924.

Colonel Ed Fletcher,  
San Diego, California.

My dear Colonel Fletcher:

Yuma has sent in a first installment in the form of a cashier's check for \$435.

Good for Yuma! And other committees have not been heard from yet.

We are fortunate, indeed, that you have taken a personal interest in our little project.

Sincerely yours,

Walter C. Smith

Original to Mr. White  
Smith's letter of 1-5 not copied but sent to White



**PINAL COUNTY  
HIGHWAY DEPARTMENT  
FLORENCE, ARIZONA**

January 14, 1924.

Colonel Ed Fletcher,  
San Diego, California.

My dear Colonel Fletcher:

We moved our mule camp Saturday to a point only two miles east of Gila Bend. The men are working about five miles from town in heavy ground and their progress is slow but steady.

I have been to Gila Bend talking with the merchants. Their attitude has changed. They also have been fearing Phoenix. The Blythe meeting in December has convinced them of Phoenix' insincerity. They are now ready to join us. One enthusiast is hauling supplies for us without charge and all are going to dig in and help erect the bridge across the canal. The people can see the road coming and the enterprising ones are already erecting advertising boards ahead of the grade.

The tractor crew had to double back over two or three miles west of Mobile on account of the uneven ground but now have about ten miles of completed grade. They have been slowing up on account of having to travel to and from Maricopa. Since Holtville's and Yuma's checks have come in, I have felt justified in establishing a separate camp for these boys. They moved over yesterday.

The Motor Trades of Tucson sent a Booster Special over the road with us on Saturday. They signed the cut-off. Monte Mansfeld did not come with them.

Sincerely yours,

*Walter C. Smith*

**PINAL COUNTY  
HIGHWAY DEPARTMENT  
FLORENCE, ARIZONA**

January 18, 1924.

Colonel Ed Fletcher,  
San Diego, California.

My dear Colonel Fletcher:

Copy of your letter to Monte Mansfeld came to me at noon. I had just mailed out checks for over \$700, supplies and payrolls for work on the cut-off for the first half of January.

Holtville alone has sent in her contribution to the cut-off fund. I have not heard from El Centro, Brawley or Calexico. I have already written you about Yuma's initial subscription. I am taking the afternoon for the cut-off. I am sending Mr. Blanchard a copy of this letter and am sending him other copies for distribution among those who are raising the funds in Imperial.

I am once more in debt but I am going ahead. With Imperial's pledge I can finish the grade to Gila Bend. Mr. Gillespie has a pile of twelve by twelves twenty-four feet in length that I can use in building a bridge across his canal. I think I can get the merchants in Gila Bend to raise enough for the labor charge and the additional lumber if I can get the stringers and posts from Mr. Gillespie.

The tractor crew is working about two miles east of Estrella, twenty miles east of Gila Bend. The mules are pushing ahead just out of town. The ground is heavy and the work going slowly. I expect to run over to Gila Bend early next week to set stakes for the approaches to the canal bridge and the intersection with the Phoenix highway.

I need the Imperial subscriptions. I need more funds right away to keep things moving.

Sincerely yours,

*Walter C. Smith*

cc - Shaw  
Traven  
Calexico C. of Com.



**PINAL COUNTY  
HIGHWAY DEPARTMENT  
FLORENCE, ARIZONA**

January 21, 1924.

Colonel Ed Fletcher,  
San Diego, California.

My dear Colonel Fletcher:

I am planning to go over to Gila Bend tomorrow to set stakes for the approaches to the bridge and the highway intersection. My latest report from Gila is that the boys are moving camp to the canal tomorrow and will be ready for stakes Wednesday. That means that the team work will be completed this week.

The caterpillar crew pulled into Estrella Saturday night and yesterday established camp at that point.

When in San Diego, I told you that I only intended to drag over the right of way. I changed my mind and am building a low grade clear through. It will be more satisfactory. I am not allowing the boys to do much finishing on the way over but will have them work back to Casa Grande and trim up as they move. Barring accidents, they will be turning about and heading for Casa Grande in another ten days.

I am looking east to Tucson and west to Imperial for help to carry me through. The team work will probably be finished this week and I will have to pay off the teamsters. There is not sufficient in the bank to meet that obligation. The mule camp is running about \$30 a day. Their last pay day was on the fifteenth. On Saturday we will owe owe \$300.

Sincerely yours,

*Walter C. Smith*

cc- Davidson  
C. F. Lister  
Vaughan - Jacumba  
Barbours North Hotel.

January 23,

1924

Mr. Walter C. Smith,  
County Engineer, Pinal County,  
Florence, Arizona.

My dear Smith:

This will acknowledge receipt of your two letters of Jan. 18th and 21st, and I have written Imperial County men to get busy and send you some money, also have taken it up with the main banks here and in Los Angeles to have their branches in Imperial Valley send over a subscription, and I hope it will net some results.

Yours sincerely,

EF:KLM



**PINAL COUNTY  
HIGHWAY DEPARTMENT  
FLORENCE, ARIZONA**

January 25, 1924.

Colonel Ed Fletcher,  
San Diego, California.

My dear Colonel Fletcher:

Thank you for your letter of January 23rd. I sent copies of my January 21st letter to Mr. Blanchard, to Alexander at Yuma, and to Monte Mansfeld. I do not know who is working for us in Imperial County so I sent Mr. Blanchard several copies of the letter for distribution. I did the same with copies of my January 23rd letter. This morning I wrote to Monte telling him of my plans and asking for the \$85 which a few men pledged when I was in Tucson in December. I drew out most of the Tucson money this morning in paying for hay.

I have not been able to get away to Tucson for several weeks and have not seen Monte. He ought to make an inspection trip over the work so that you can have a third-party report. He may have had reasons for not joining the Motor Trades Special. It was not a very respectable party and my Casa Grande committee was ready to turn back at Maricopa.

Mr. Clements told me over the phone this morning that he had received \$100 from the Barbara Worth hotel. You have evidently stirred up El Centro.

Sincerely yours,

*Walter C. Smith*

5

**PINAL COUNTY  
HIGHWAY DEPARTMENT  
FLORENCE, ARIZONA**

January 25, 1924.

Colonel Ed Fletcher,  
San Diego, California.

My dear Colonel Fletcher:

Monte has just wired me

"Try and keep crews working. Will endeavor to have additional funds by Wednesday."

Sincerely yours,

*Walter C. Smith*

5



**PINAL COUNTY  
HIGHWAY DEPARTMENT  
FLORENCE, ARIZONA**

January 28, 1924.

Colonel Ed Fletcher,  
San Diego, California.

My dear Colonel Fletcher:

The teamsters finished their work at Gila Bend Saturday. The highway intersection and the bridge approaches are complete. Some people in Phoenix have not believed what we are doing. Maricopa County engineers heard that we were working in Gila Bend and went there to see what was happening. They found everything practically ready for the bridge.

Yesterday the mule outfit moved back to Mobile where we have about a day's work building up the grade.

The tractor crew is now making good time. We move camp every other day to keep up with the work. Saturday night the boys pulled into Bosque, only nine miles from Gila Bend. Yesterday they moved camp beyond Bosque and this morning are marking out two miles of the remaining nine. If our luck continues, we will have the grade in Gila Bend Saturday night.

I have purchased a new grader for the county. It is now at work on the cut-off within our boundaries. I am moving it to our county line to meet the tractor on its return so that we can make a round trip and finish our grade with a new blade.

Gila Bend is enthusiastic over our project. One man offered to deliver the lumber and assume the cost of erecting the sub-structure of our bridge so that we may have it in before much water runs in the canal. The water company has offered to shut off the flow in the canal to enable us to set in our sills and posts. The Gila Chamber of Commerce was supposed to meet Saturday night to discuss ways and means of offering us financial aid to complete our project. I have not heard from the meeting. I am asking them to give me the lumber and \$400 and I will build a bridge.

Our work is practically complete but we have not enough money to pay our bills. I need the full pledge from Imperial County and Yuma. Pay day is Saturday. I need \$800 to meet the pay roll.

Sincerely yours,

*Walter C. Smith*

*cc - Travers  
Washington Sabaukoon  
Shaw  
Fairwell*

January 28, 1924.

Mr. Walter C. Smith,  
County Engineer,  
Pinal County, Ariz.

My dear Mr. Smith:

Mr. and Mrs. White, Mrs. Fletcher, and myself will be in Phoenix Tuesday, February 5th, at the Adams Hotel, and are planning on running to Yuma Wednesday, coming first to Casa Grande; thence Maricopa, and Gila Bend. If you can find time to go over the road with us part way it would be fine.

I have asked Mr. Clement to do likewise, and have written Monte Mansfield inviting him to have a committee make the trip with us.

With kind regards,

Very sincerely yours,

EF:AH

*cc - Mr. Clement*



BOARD OF SUPERVISORS  
H. H. McDONALD, CHAIRMAN  
ROBERT DENTON, MEMBER  
GEORGE E. TRUMAN, MEMBER  
C. H. NIEMEYER, CLERK

ENGINEERING DEPARTMENT  
WALTER C. SMITH, COUNTY ENGINEER  
ROBERT D. ROE, ASS'T. ENGINEER  
GEORGE W. SIGLER, CLERK

**PINAL COUNTY  
HIGHWAY DEPARTMENT  
FLORENCE, ARIZONA**

January 30, 1924.

Colonel Ed Fletcher,  
San Diego, California.

My dear Colonel Fletcher:

I have your letter of January 28th. The Board of Supervisors will meet Monday and Tuesday, February 4th and 5th. I will meet you in Florence or Casa Grande Wednesday and drive over to Gila Bend. I will talk with you over the phone at the Adams and we can arrange the details of meeting and set an hour. I will get in touch with Monte and Mr. Clements.

I am very happy to know that you are coming. I hope to have a surprise for you. Our tractor is down today for repairs but I think the boys will have the grade completed by Wednesday.

Sincerely yours,

*Walter C. Smith*

8

**WESTERN UNION  
TELEGRAM**

Form 1206A

CLASS OF SERVICE DESIRED	
Telegram	
Day Letter	
Night Message	<input checked="" type="checkbox"/>
Night Letter	
Patrons should mark an X opposite the class of service desired; OTHERWISE THE MESSAGE WILL BE TRANSMITTED AS A FULL-RATE TELEGRAM	

NEWCOMB CARLTON, PRESIDENT

GEORGE W. E. ATKINS, FIRST VICE-PRESIDENT

Receiver's No.
Check
Time Filed

Send the following message, subject to the terms on back hereof, which are hereby agreed to

Feb. 8, 1924.

Walter C. Smith,  
Florence, Arizona.

Raised eight hundred to one thousand dollars in Yuma and El Centro yesterday Will be sent immediately Pat road in good temporary condition reserving the balance of money to be used after first rain See letter

ED FLETCHER

Chg. Ed Fletcher Co.



PINAL COUNTY  
HIGHWAY DEPARTMENT  
FLORENCE, ARIZONA

February 9, 1924.

Mr. Walter C. Smith, County Engr.,  
Pinal County,  
Florence, Arizona.

My dear Smith:

Inclosed find copy of my letter  
to Mr. Clements, also one to Mr. Mansfeld, which  
are explanatory and for your information.

Yours very truly,

EF:AH

February 12, 1924.

Colonel Ed Fletcher,  
San Diego, California.

My dear Colonel Fletcher:

Mr. Blanchard wrote me on the second a dis-  
couraging letter in which he said that El Centro and Brawley  
had promised to send over some money last Monday or Tuesday  
and that Calxico positively refused to do anything. And  
then your wire comes and your letters to Monte and to  
Mr. Clements.

It is very good of you to say to Monte what you  
have about the work. I have always felt that we were giving  
you all full value for our expenditures but I wanted you to  
read that assurance from another's report.

If you had not been willing to take the chance  
and had not thrown in with me, I could have done nothing  
in Maricopa County. Remember that.

The boys finished the rough grading the day after  
we drove over the cut-off. They are now working back toward  
Maricopa trimming up. I sent our new grader over to meet  
them at the county line so they could do a better job. In  
another week I expect to be able to make a final report on  
this our first job.

Sincerely yours,

*Walter C. Smith*

8

cc - F. M. White  
C. B. Gould  
Jack Thompson  
Stanley Hall



**PINAL COUNTY  
HIGHWAY DEPARTMENT  
FLORENCE, ARIZONA**

February 14, 1924.

Colonel Ed Fletcher,  
San Diego, California.

My dear Colonel Fletcher:

Yuma has sent me \$250 and promises more within a few days. They never in the world would have done it if it had not been for you. Yuma owes much to you. It must be a great source of satisfaction to have the men show their appreciation in such a concrete manner.

The boys are at Bosque today moving westward with our new blade. I expect them back at our county line on Monday. Clouds have been gathering overhead. I am praying for rain to settle the dust.

I have written to Gila Bend asking the Water Company to set a price on the ground at the highway intersection but as yet have had no reply.

I have heard nothing further from Trosper about the bridge. The Gila Water Company has never been known to meet its pledges for civic improvements. We are assured, however, that if they will donate the timbers the townspeople will raise the funds to erect the bridge.

Not a penny from Tucson.

Sincerely yours,

*Walter C. Smith*

February 15, 1924.

Mr. Walter C. Smith,  
County Engineer,  
Florence, Arizona.

My dear Smith:

I talked to Mr. Gillespie over the phone, and he said he would make a nominal price for the timbers, and to go ahead; so you had better go down to Gila Bend and get the bridge work started immediately, and whatever Colonel Smith says you will have to pay for the timbers, you had better pay.

I have just received word that El Centro sent to Mr. Clements \$465 yesterday, and Yuma nearly \$500. Holtville will probably send another \$100.

Don't forget to invite the Auto Club of Arizona to sign post the new road, and invite them to come down and go over it with you, and let me hear the result.

Yours very truly,

EF:AH



BOARD OF SUPERVISORS  
H. H. McDONALD, CHAIRMAN  
ROBERT DENTON, MEMBER  
GEORGE E. TRUMAN, MEMBER  
C. H. NIEMEYER, CLERK

ENGINEERING DEPARTMENT  
WALTER C. SMITH, COUNTY ENGINEER  
ROBERT B. ROE, ASS'T. ENGINEER  
GEORGE W. SIGLER, CLERK

**PINAL COUNTY  
HIGHWAY DEPARTMENT  
FLORENCE, ARIZONA**

February 18, 1924.

Colonel Ed Fletcher,  
San Diego, California.

My dear Colonel Fletcher:

The first job is done. The S. P. Cut-Off is graded from Casa Grande to Gila Bend. The boys have put the finishing touches on the rough grade in Maricopa County and are moving back into Pinal County with the grading equipment.

With the erection of a bridge across the Gila Water Company canal at Gila Bend, the preliminary construction will be complete. I am arranging to go ahead with that work. After that we must work to have the Tucson-Casa Grande-Gila Bend road incorporated into the State Highway System. To that end I will bend all my efforts.

Five months ago yesterday I went to San Diego to discuss with you the building of the cut-off and to learn the situation with regard to the raising of funds. You offered me the support of Southern California. It was a critical time. San Diego came forward and started the ball rolling. It was an inspiration to the men in the Casa Grande valley. Casa Grande followed, then Tucson, Imperial Valley and Yuma. There were other times as the work progressed when it did seem as if we would have to stop moving dirt but each time Southern California came forward and kept the ball rolling.

For Pinal County you have my promise to put and keep the S. P. Cut-Off from the Pima County line to the Maricopa County line in as good condition as our funds will permit.

I want to take this opportunity of expressing my gratitude and that of Southern Arizona for the big-hearted generosity which San Diego has shown in going out of her own county and state in the cause of good roads. It is splendid.

Sincerely yours,

*Walter C. Smith*

*1-2-BA7*  
Hand copy to Keller-Belcher-  
Wilson-Belcher-Lones-Thompson  
Madden-Hall-White-Long-Darland  
Wilson-Wilson-everyone who helped finance

123-25  
February 20, 1924.

Mr. Walter C. Smith,  
Pinal County Highway Department,  
Florence, Arizona.

My dear Mr. Smith:

I telephoned Dr. Gillespie and he told me we could have the timbers at a nominal figure and would write Colonel Smith what the charge would be, so go ahead and take the timber, get the Gila people to build across the canal immediately.

Get a price on that corner at Gila Bend. I want to buy it for the Chamber of Commerce.

Yours very truly,

EF:KLM



**PINAL COUNTY  
HIGHWAY DEPARTMENT  
FLORENCE, ARIZONA**

February 22, 1924.

Colonel Ed Fletcher,  
San Diego, California.

My dear Colonel Fletcher:

I am enclosing a log of the S. P. Cut-Off in Cochise County which you expressed a desire to have. It antedates the work which Hunt did from the Junction toward Stein's Pass.

I sent Mr. Kelsey to Gila Bend upon receipt of your letter of February 15th. He saw Colonel Smith and will pick out what timbers we need for the bridge at half price, \$35 per thousand. The townspeople have said that they would raise the money to erect the bridge if Mr. Gillespie would donate the timbers. I instructed Mr. Kelsey, in his talks, to let it appear as if the timbers had been donated and to ask the men of Gila Bend to meet their pledge. Both Mr. Hoover and Mr. Trospen promised to get busy right away.

I am enclosing copies of letters from Mr. Alexander, Secretary of the Yuma Chamber of Commerce, and from Mr. Blanchard. We received \$500 from El Centro through Mr. Tondro. Tucson has done nothing. To be perfectly honest with you, I do not expect a thing from Tucson. Tucson is sleeping.

I wrote a report on the cut-off in a general statement of our roads to the Arizona Good Roads Association. Mr. Swanzy intended to make a general announcement of the cut-off at the annual meeting of the Arizona Good Roads Association this month but the meeting has been postponed until June. As soon as I finish the bridge, I will see that the road gets its full share of publicity.

Sincerely yours,

*Walter C. Smith*

8  
Encl. 3

**PINAL COUNTY  
HIGHWAY DEPARTMENT  
FLORENCE, ARIZONA**

February 22, 1924.

Log of Road from Lordsburg via Stein's Pass and along the Southern Pacific Tracks to Willcox, Benson and Tucson. September 20, 1923.

Speedometer Reading.....Place....Condition of Road.

0.0	Lordsburg	Detour; road under construction.
9.0		Good on highway.
17.1	Junction with Bankhead Highway to Douglas.	Fair road.
27.7		Bad wash; sandy bottom. Fair to good.
29.5	R. R. Xing.	Fair to good.
35.7	San Simon	Under construction.
36.5		Excellent road.
41.5		Fair.
52.0	Bowie	Under construction. Detour.
53.5		New grade. Excellent.
77.0	Willcox	Fair to good.
88.3	Cochise	Fair.
100.0		Fair.
101.8	Texas Canyon limit	Rough and rocky. Under repairs.
103.8	Texas Canyon limit	Fair.
116.3	Benson	Excellent state highway.
168.5	Tucson	

W. C. SMITH



**PINAL COUNTY  
HIGHWAY DEPARTMENT  
FLORENCE, ARIZONA**

February 23, 1924.

Colonel Ed Fletcher,  
San Diego, California.

My dear Colonel Fletcher:

My letter of yesterday which crossed yours of the 20th in the mail gives you the latest information on the bridge across the canal at Gila Bend. I am planning to have the timbers hauled to the site and the bents framed before I ask the Water Company to stop the flow of water in the canal. I expect then to get in the sills and posts in one day.

I have been expecting a deed for the triangular plot at the highway intersection. I began negotiations soon after you made your trip over the road but there has been a delay in the engineer's office. Colonel Smith told Mr. Kelsey the other day that they would draw up a deed at once and mail it to me.

Sincerely yours,

*Walter C. Smith*

8

**PINAL COUNTY  
HIGHWAY DEPARTMENT  
FLORENCE, ARIZONA**

February 24, 1924.

Colonel Ed Fletcher,  
San Diego, California.

My dear Colonel Fletcher:

The bridge situation at Gila Bend remains about the same as at my last writing. I have not had an opportunity to drive over yet. Yesterday I wired to Mr. Hoover telling the people that we are waiting for returns from Gila Bend before starting work on the bridge.

I am collecting the bills for the cut-off that are outstanding. As soon as I have a clean slate, I am going before the men of Casa Grande and ask them to raise additional funds. Mr. Clements and Mr. Swanzy think they can raise at least \$250 more in Casa Grande.

Tucson seems to have lost interest in our little project. Tucson is playing with Ajo for a road to that place. They are asking for federal aid on the project.

Casa Grande has been invited to meet with Phoenix at the Chamber of Commerce to formulate plans for road improvement in the south. Gilbert and Chandler are fighting over the route north from Casa Grande. Mr. Clements, Mr. Swanzy and Mr. Denton, our supervisor, are among the delegates from Casa Grande to the conference. They will not mix in the Gilbert-Chandler fight but will stand pat for improvement by state forces of the Tucson-Casa Grande highway and from Casa Grande north across the Gila River to the Maricopa County line. If we can get the main highway from Tucson off our hands and in the state highway system, we will thereby be enabled to throw more money into the work west of Casa Grande over the cut-off.

Yesterday I started the tractor crew working east from Casa Grande over the cut-off. They will trim up the highway to the Pima County line. Upon their return, they will build a detour at Eloy around that bad stretch and then plow and scarify the main highway. I have a crew at Superior that I plan to send to Eloy in another two weeks to start surfacing.

You will also be interested to learn that this morning we are starting to haul rock to the dips west of Casa Grande. We are going to build rock walls and sub-grades and fill in with gravel. I hope to have this work complete by the first of June before the summer rains.

I am laying the ground work for state-wide propaganda for our cut-off. My first step will be to organize a State County Engineers'



**PINAL COUNTY  
HIGHWAY DEPARTMENT  
FLORENCE, ARIZONA**

Colonel Ed Fletcher 2-24-24-2

Association. I am inviting the county engineers and engineers for the county highway commissions to join with me. In this way I hope to get in touch with the men of the north, interest them in our problem and attempt to make a trade for a cross country highway. Have you not a State County Engineers' Association in California? I am gathering suggestions from the various states that have an organization and would like to get copies of constitutions and by-laws and other information that will aid me. Will you kindly put me in touch with your county engineer, please?

I have not yet received the deed for the plot of ground at the highway intersection at Gila Bend. As soon as it comes in, I will close the deal and transfer title to you, if you wish.

If I hear nothing very soon, I will drive over to Gila Bend as soon as possible. I am pretty well spread out trying to carry the county work, the cut-off and my own private business in Phoenix. In addition to our contracting, we are working into the builders' supply trade and are delivering mixed mortar, lime putty and stucco, and now I am chasing around trying to locate a body of limestone so that we may burn our own lime. There is only enough business in Phoenix for one such outfit. We have keen competition and with our limited finances it keeps me on the run. But it is lots of fun.

I will have a map of our Florence-Casa Grande Power District for you within a few days showing the district boundaries and the proposed power lines. They expect the court to pass on the validity of the districts shortly and then construction will begin. What we need is cheap power. We have the land. There are now and will be some splendid opportunities to secure good land at reasonable prices. The people have high hopes for favorable action by this present Congress on the San Carlos Dam. The special representative from the Valley who is lobbying in Washington reports progress in the House Committee. I admire the men in Casa Grande for their stick-to-it-iveness. Our little road has been a ray of light for them. They are getting more traffic than ever before and they are all making a little money. They are somewhat disappointed in Tucson but I tell that they are big enough to carry along without Tucson's help.

Your support and that of San Diego has meant a lot to the little town of Casa Grande. They will go the limit for you.

Sincerely yours,

*Walter C. Smith*

<sup>B</sup> cc - Mr. White

February 27, 1924.

Mr. Walter C. Smith,  
Pinal County Highway Department,  
Florence, Arizona.

My dear Smith:

Answering yours of the 18th, many congratulations!

I can pull a lot of strings in Arizona so keep me in touch with the program or making the Casa Grande-Gila Bend road a part of the state system.

Am snowed under with work.

With kind regards, I am

Yours very truly,

WCS:KLM

P.S. You did not enclose the log of the S. P. cut-off.



February 29, 1924.

Mr. Walter C. Smith,  
County Engineer,  
Florence, Arizona.

My dear Mr. Smith:

I thank you for your letter of the  
24th.

I assume that with what is coming from  
Tucson, you will have more than enough to pay your  
bills to date. Is this correct?. I did want a little  
fund of \$400 or \$500 left in Mr. Clement's hands to  
put the road in better shape after the next rain.

My advice to you now is to get all the  
publicity possible on the Tucson-Casa Grande-Gila Bend  
road.

I see Yuma County has started a referendum  
petition for a state highway Yuma to Tucson via the  
cut-off. My advice to you is to go the limit to get a  
highway direct to either Casa Grande or Gila Bend from  
Phoenix. I must keep my hands off, and probably you will  
have to stir them up for results.

Glad to know that you are going right  
ahead on the Pinal County work. Fine!

State-wide propoganda for your road is what  
pleases me.

Inclosed find copy of letter to Childs,  
the County Engineer, that is explanatory.

I would like title to the land at Gila  
Bend, and want you to locate for me for us to buy at the  
proper location at Tucson so we can put up a sign diverting  
the travel by way of Casa Grande and Gila Bend.

I have just gotten the San Diego-California  
Club to pledge \$5,000 of this year's funds towards putting  
up real sign boards and helping out on our route. This is



Page Two

strictly confidential. Our interests are mutual, and I don't mind asking you to play our game.

We want to buy the land where the position is the most strategic for the building of twenty or thirty foot billboards to divert travel our way. What do you think about having one at Superior? We ought to have one at Lordsburg, one at Hassayampa, and any other suggestions that you have to make I would appreciate.

Keep right after that Gila Bend bridge over the canal, and get it built. You might as well wind it up yourself - no one else will do it.

I am coming over again shortly, and I am going to take up the land situation with you. It will be thirty or sixty days before I am in shape financially to tackle anything new, but in the mean time make a list of real bargains, and when I come over we will try and do some business together. I feel like telling you that if I go into it at all I will give you a working interest in the proposition for looking after it.

Yours very truly,

EF:AH

BOARD OF SUPERVISORS  
H. H. McDONALD, CHAIRMAN  
ROBERT DENTON, MEMBER  
GEORGE E. TRUMAN, MEMBER  
C. H. NIEMEYER, CLERK

ENGINEERING DEPARTMENT  
WALTER C. SMITH, COUNTY ENGINEER  
ROBERT B. ROE, ASST. ENGINEER  
GEORGE W. SIGLER, CLERK

PINAL COUNTY  
HIGHWAY DEPARTMENT  
FLORENCE, ARIZONA

March 4, 1924.

Colonel Ed Fletcher,  
San Diego, California.

My dear Colonel Fletcher:

I am enclosing the log of the Cochise County Cut-Off. I did not keep the exact time on the run because we stopped at each town to talk with the garage and service station men. We left Lordsburg at 8:00 A. M. and arrived in Tucson about 5:30 P. M.

Thank you for your letter to Mr. Childs. I believe the engineers will get together with me. Several have answered my invitation and each letter was favorable.

I have been under the weather for a few days and everything is piling up. I intend to see that bridge built across the canal at Gila Bend. You can depend upon me to get the locations for the sign boards. I will be only too glad to help in any way I may, so do not hesitate to call upon me.

Sincerely yours,

Walter C. Smith

8

RECEIVED  
PINAL COUNTY  
HIGHWAY DEPARTMENT  
FLORENCE, ARIZONA  
MARCH 10 1924



BOARD OF SUPERVISORS  
H. H. McDONALD, CHAIRMAN  
ROBERT DENTON, MEMBER  
GEORGE E. TRUMAN, MEMBER  
C. H. NIEMEYER, CLERK

ENGINEERING DEPARTMENT  
WALTER C. SMITH, COUNTY ENGINEER  
ROBERT B. ROE, ASST. ENGINEER  
GEORGE W. SIGLER, CLERK

**PINAL COUNTY  
HIGHWAY DEPARTMENT  
FLORENCE, ARIZONA**

March 7, 1924.

March 10, 1924.

Mr. W. C. Smith,  
Florence, Arizona.

Colonel Ed Fletcher,  
San Diego, California.

My dear Smith:

My dear Colonel Fletcher:

Answering yours of the 22nd, thanks for the mileage - Lordsburg to Tucson. Is this the distance when the highway will be completed, or did you take the number of detours, and will the road be shorter when finally built, and roughly - how much?

We took all the detours on the run from Lordsburg to Tucson along the Southern Pacific. There were really only two detours, one out of Lordsburg and one out of Bowie. The construction at that time was almost complete. I imagine the entire road is now passable. The Cochise engineer was at the time of our run working along the tracks and had plans for improving the present road to the New Mexico state line. I do not know how much of this work has been done but I doubt whether the completed road will be any shorter than that over which we drove.

It is just possible I will be over there in the near future.

At Dragoon, 100 miles west of Lordsburg, you now leave the railroad and go north through Texas Canyon. You do not come back to the tracks until you reach Benson. I have not been over the ground along the track from Dragoon to Benson but such a route looks feasible.

Yours very sincerely,

Offhand, I would say that the mileage of an improved highway from Lordsburg to Tucson could not be reduced below 165 miles.

EW:AH

Any time you require information on this cut-off, let me know. My younger brother is County Agricultural Agent for Cochise County with headquarters at Willcox on the cut-off. I occasionally go to Willcox and can and will be glad to help.

Mr. Swanzy has informed me that Phoenix has been checking in the tourists who travel the Casa Grande-Gila Bend Cut-Off. Phoenix cannot check the traffic eastward but she will endeavor to intercept it going west.

I enclose clippings from the Republican for your information. Tomorrow at the Phoenix Chamber of Commerce Maricopa County will attempt to arrive at a decision in the Gilbert-Chandler dispute.

Tomorrow early I am leaving for Gila Bend.

Sincerely yours,

Walter C. Smith



BOARD OF SUPERVISORS  
H. H. McDONALD, CHAIRMAN  
ROBERT DENTON, MEMBER  
GEORGE E. TRUMAN, MEMBER  
C. H. NIEMEYER, CLERK

ENGINEERING DEPARTMENT  
WALTER C. SMITH, COUNTY ENGINEER  
ROBERT B. ROE, ASST. ENGINEER  
GEORGE W. SIGLER, CLERK

**PINAL COUNTY  
HIGHWAY DEPARTMENT  
FLORENCE, ARIZONA**

March 15, 1924.

Colonel Ed Fletcher,  
San Diego, California.

My dear Colonel Fletcher:

I went to Gila Bend as I planned. I took \$116 in cash from the town. Mr. Odle of the new camp grounds, when approached by Mr. Hoover, said that he had sent a check for \$50 to you. Did this go in with the Yuma money?

Mr. Gillespie issued an order against sales of property in the town and the local manager was unable to send me the deed to the ground at the highway intersection. The company executives will be in session today at Phoenix and I was promised that my request for the land would be placed before Mr. Gillespie for his decision.

The engineer has changed his mind about shutting off the water in the canal for us although he seems anxious to see the bridge built. I, too, changed my mind and changed the design of the bridge. We will throw the bridge across, water or no water. I am going to Phoenix tomorrow to order some of the bridge material sent to Gila Bend.

It took me exactly two hours and forty-five minutes to make the run from Casa Grande to Gila Bend. That beats our former record. The road is packing fairly well but in places is dusty and chunky. If we had a good rain and the road could be dragged, I believe we could average thirty miles an hour. There is still room for improvement. If Tucson would only come across, I could put two or three men down there for a couple of weeks and fill up the worst chuck holes.

Tucson is issuing invitations for the "motorcade" to San Diego. They are setting the date around the first of April. I believe that is a great mistake. My advice is to hold off another month until I have an opportunity to get the road in our own county in better shape and the surfacing started at Eloy. West of Casa Grande we have surfaced three of the largest dips and are working steadily with a small crew and two trucks. I am writing to Mr. Condron, Secretary of the Chamber of Commerce, who is in charge of arrangements.

The men in the valley are feeling pretty happy. The Supreme Court ruled that the electrical bonds were valid. Today's Republican says that material has been ordered and that work will begin at once on the power line.

Sincerely yours,

cc - Mr. White

Walter C. Smith

ARIZONA REPUBLICAN 3/6/24  
**Meeting With Officials On  
Road To Casa Grande Valley  
Called By Chamber Tuesday**

Gov. George W. P. Hunt, members of the state highway department, and members of the Maricopa county board of supervisors were invited yesterday to meet with the road committee of the Chamber of Commerce on Tuesday afternoon at 2:30 o'clock to discuss the Phoenix to Casa Grande via Chandler road and the Black Canyon highway.

The meeting has been called, according to Judge Frank O. Smith, chairman of the Chamber committee, in the hope of bringing about early provision of the road work necessary to give people of the Casa Grande district an outlet to the Salt River valley.

The officials will also be urged to accompany members of the road committee on a visit in the very near future to Prescott to hold a joint

conference there with Yavapai county officials relative to a north and south road across the state.

About five miles of work remains to be done in Maricopa county. It was explained, to insure the proposed Casa Grande to Phoenix road. It is to be urged that the five mile link, extending south from Chandler to the Maricopa county line, be put into good condition. Provision has already been made for the 25 mile link northward from Casa Grande to the Maricopa line.

The Casa Grande and North and south roads have both been made part of the road program of the Chamber for 1924. The north and south road, it is urged, calls for a highway kept in first class condition southward from Flagstaff through Prescott, Phoenix and Tucson to Nogales.



March 15, 1924.

Mr. A. H. Condron, Secretary,  
Chamber of Commerce,  
Tucson, Arizona.

My dear Mr. Condron:

I have read your invitation to the men of Casa Grande to join in with the "motorcade" to San Diego. May I suggest that you delay the trip another month? I am still making occasional drives over the Casa Grande-Gila Bend Cut-Off and offer my suggestion from a knowledge of the road.

My recollection is that Colonel Fletcher suggested that the "motorcade" be delayed until the preliminary work on the Cut-Off was complete. It is not complete. We have yet to build a bridge across the canal at Gila Bend and need money for maintenance.

Is Tucson going to let Casa Grande build a road for her? So far credit for the Cut-Off belongs west of Tucson and particularly to Casa Grande and San Diego. Tucson, the largest town in Southern Arizona and the one that will most benefit by the Cut-Off has raised little more than Yuma and El Centro, less than Casa Grande and less than half as much as San Diego. Casa Grande, a little town of seven hundred inhabitants, raised over a thousand dollars. The subscription list includes all businesses and classes. Even the laboring man donated and no donation was less than five dollars. In that same spirit, what could Tucson not do?

Tucson has accommodations for tourists. Tucson will get the night stop-overs. The tourist will buy little gas in Casa Grande if he can reach Tucson where the price is less. I know that to my sorrow. We, in this county, lose out on the gas tax; people buy in Tucson and Phoenix and sail through Pinal County leaving us no revenue.

I went to Gila Bend the other day. My car stood on the west bank of the Water Company Canal at Gila Bend. I was pondering over the bridge problem. I was not there a half hour but in that time no less than a half dozen foreign cars pulled up alongside over the cut-off to the bridge site. I urged them to drive around the detour and take the direct road to Tucson. The Phoenix highway was right there. It looked good to them and they took it. I daresay that you fellows never saw them.

You do not know what you are losing. Traffic is coming east. Superior is getting the lion's share. You are not getting much. It is not coming through Florence. More is coming through Casa Grande than ever before and a bridge at Gila Bend will double if not treble your trade.

You promised Colonel Fletcher that you would raise \$500 by Wednesday, February 13th. I need the money. Must I go to Casa Grande and ask for funds to build the bridge? Tucson is the only town that did not meet its pledge. All others met their promises to the Colonel.

If you want the tourist, you must divert him before he reaches Phoenix. After he leaves Gila Bend going north, you have little chance. You have no chance at all after he reaches the Florence-Superior Junction. Practically all of the maintenance work has been from the Junction eastward to Superior. The highway is well surfaced and in much better condition than the branch to Florence and Tucson. Unless one has a particular mission in Tucson, he will invariably take the Superior road.

You can divert the tourist at Gila Bend and send him over the Cut-Off. But we must have a bridge to turn the trick. Think what a saving in mileage and time you can offer. If you had been driving alongside the railroad for a hundred fifty miles, would you take a side trip and go a hundred miles out of your way? You would if you did not know the ropes. You would be liable to if you had to double back and make a three-quarter mile detour to cross a canal on the cut-off. I make Casa Grande from Gila Bend in two hours and three-quarters. Going west, you can be in Gila Bend over the cut-off by the time you could reach Phoenix via Florence.

We need that bridge. You need that bridge. You can have that bridge for \$500. For \$500 you can double your tourist trade. It means money to you. I know. I can see it in Casa Grande. I will make you a fair proposition. Casa Grande has already raised \$250 more than Tucson but I will ask from Casa Grande and get \$250 more if you will raise \$500 to fulfill your promise to Colonel Fletcher.

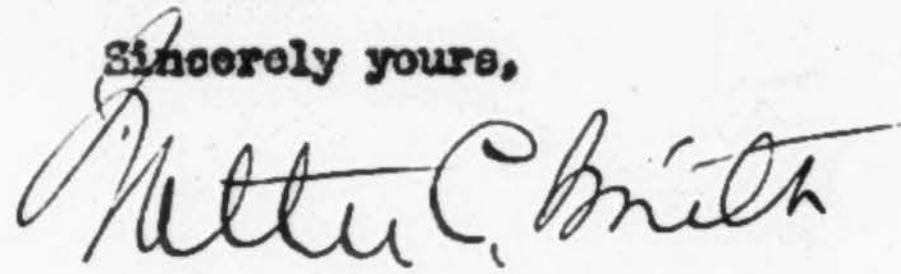
The Motor Trades did their share toward raising funds for the Cut-Off. The Realty Board did not fail us. But I have not heard of one red cent donated by the merchants and hotel men. They, together with the motor trades, share in the greater part of the tourist business. Monte Mansfold had a good suggestion some months ago at the beginning of the campaign. He suggested that each organization vie with the other in the raising of money. The Motor Trades have come across and the Realty



Board. Who comes next? Can you not start the ball rolling for one last drive for \$500? Monte wired to me to keep moving when we were short of funds, thinking that Tucson would help me meet expenses. But Tucson did not respond.

Please do not try to make me believe Tucson cannot raise \$500. I need that much to complete the work on the Cut-Off and to prepare the way for the "motorcade".

Sincerely yours,



County Engineer.

March 18, 1924.

Mr. Walter C. Smith,  
Pinal County Highway Department,  
Florence, Arizona.

My dear Mr. Smith:

Thanks for your letter of the 15th.

What about Gillespie? Did he let you have the timber?

I have written a corking letter to Tucson and stirred things up I believe.

Yours very truly,

EP:AH

3  
cc Colonel Ed Fletcher  
Mr. W. P. Clements



**PINAL COUNTY  
HIGHWAY DEPARTMENT  
FLORENCE, ARIZONA**

March 19, 1924.

Colonel Ed Fletcher,  
San Diego, California.

My dear Colonel Fletcher:

I am enclosing a copy of a reply to my letter of the 15th to the Tucson Chamber of Commerce. It is self-explanatory. I am going after that \$250 from Casa Grande.

We had a pretty fair rain all over the county yesterday and last night with promise of more. This morning I started a Cletrac with drags over the Cut-Off from Casa Grande. The outfit will go straight through to Gila Bend. As soon as I can break away from our other work, I will follow up and attend to the work personally.

My surfacing crew is passing through Florence today on the way to Eloy. By May first I hope to have that bad three mile stretch surfaced. I did not pay much attention to the Casa Grande-Tucson road with this rain as this crew will be on the ground to work it over at our leisure. I am going to try to have the entire Cut-Off from our county line on the east clear through to Gila Bend in good shape for the motorcade.

With Tucson's subscription complete, I will be on easy street with a small maintenance fund. I am very happy to have their cooperation.

Sincerely yours,

*Walter C. Smith*  
*White*

Encl. 1  
B

*Mr. White:  
Please return  
Ed Smith*

**PINAL COUNTY  
HIGHWAY DEPARTMENT  
FLORENCE, ARIZONA**

March 25, 1924.

Colonel Ed Fletcher,  
San Diego, California.

My dear Colonel Fletcher:

Answering a query in your letter of the 18th, Mr. Gillespie will let us have the used lumber for \$35 per thousand, the price he charges the townspeople.

I am very glad, indeed, that Tucson lined up with us. I feel that it is your personality that won them over. The very day that we were in Tucson the men were not at all enthusiastic in their talks with Mr. Swanzy and he had been skeptical of the returns until Monte's letter of the 17th came.

We did not have much rain over the Cut-Off west of Mobile, the first station west of our county line. I sent a truck over the road after the Cletrac Sunday morning.

In this county, as in Pima County, we had good but damaging rains. I was stuck for seven hours Friday in a foot of snow on the Florence-Tucson highway thirty miles from Tucson. I was the first to plow through the snow, skidded over on to a soft shoulder on a narrow fill and slid down into a muddy borrow pit.

We had to expend so much on repairs that I will have to discontinue the work on the dips west of Casa Grande for a while. Our budget is nearly exhausted.

Since the rains I have kept all of our equipment in this county and will not be in a position to go ahead with the Gila Bend bridge until next week. Some of the material is on the ground and I am ordering the balance today.

Thanks for the copies of the Mansfeld correspondence. I think the Tucson crowd leaves everything to Monte.

Sincerely yours,

*Walter C. Smith*

B



C O P Y

March 25, 1924.

Mr. Monte Mansfeld,  
Tucson, Arizona.

My dear Monte:

My car is in the shop today and for the first time in ten days I will both lunch and dine at home. I have been on the jump all the time. And so you have not heard from me.

Monte, I cannot tell you how pleased I am with your letter of the 17th. I had ordered the bridge material on faith and county credit so you may imagine I breathed a sigh of relief. A big load is off my mind. You have all been very good. I appreciate the fact that it is difficult to raise funds for our little project without publicity. With us in Casa Grande it is different. For my part, physically and financially, I stand between Tucson and Phoenix. I am a taxpayer of Tucson and Pima County and I want to see Tucson move ahead. At the same time I want to see Phoenix advance for I am financially interested in the building game in that city. I do not think that Phoenix shoots straight with Tucson. If my "lecture" showed the slightest trace of impatience or disappointment, it was that of a Tucsonan. I believe in the Tucson-Gila Bend Cut-Off as the logical cross country route and my enthusiasm is complete. I am not slackening up. I have just begun.

The recent rains did not do us much good on the Cut-Off in Maricopa County. They did not reach beyond Mobile. In our county I have a caterpillar pulling a blade eastward from Casa Grande. That stretch is a terror. I have a surfacing camp at Picacho Peak preparing to surface the Eloy stretch. On account of a budget shortage, I have had to pull off the dips west of Casa Grande for a while.

I hope to have the Cut-Off in shape soon for the motorcade. It may be that we can drive through about the middle of April.

Sincerely yours,

WALTER C. SMITH

BOARD OF SUPERVISORS  
H. H. McDONALD, CHAIRMAN  
ROBERT DENTON, MEMBER  
GEORGE E. TRUMAN, MEMBER  
C. H. NIEMEYER, CLERK

ENGINEERING DEPARTMENT  
WALTER C. SMITH, COUNTY ENGINEER  
ROBERT B. ROE, ASS'T. ENGINEER  
GEORGE W. SIGLER, CLERK

PINAL COUNTY  
HIGHWAY DEPARTMENT  
FLORENCE, ARIZONA

March 27, 1924.

Colonel Ed Fletcher,  
San Diego, California.

My dear Colonel Fletcher:

Thank you for the copies of your correspondence with Monte Mansfeld. I am enclosing a copy of the letter I wrote to Monte in reply to his letter of the 17th.

I am sorry if I irritated the Tucson crowd. I meant no offense. I meant to excite them a bit so they would show some "pep". They are a fine bunch of fellows. I hope I may be pardoned for treading on their toes. I am very fortunate in having you for mediator. Many thanks but I shall not keep you very busy. Money is what I wanted and action and I believe we have results.

My boys are starting in this morning to surface the Eloy stretch and patch along the Cut-Off. I would like to place the road in our county in fairly decent shape for the motorcade.

Have you a preference for the time of the motorcade? It really does not make much difference to me except that I would like to have the boys working along the road so that they may have concrete evidence of my faith and promises. In a very few days, with the exception of five men, I will have the entire county forces concentrated on the Cut-Off. That does not mean much in numbers under the present condition of our budget but it is the very best I can do. Pima County has an excellent road within her boundaries. As fast as I am able, I will try to approach the Pima stretch.

It might interest you to know that Senator Wilkinson, in a talk before a small railroad gathering in Florence a couple of weeks ago, openly stated that he was interested and was going to work with Florence for a main line railroad through our valley to Phoenix, for cheap power and for an AMENDED BILL 100, a paved highway through Florence to Phoenix and to Blythe.

Sincerely yours,

Walter C. Smith

8

cc - Mr. White



March 29, 1924.

Mr. Walter C. Smith,  
County Engineer,  
Florence, Arizona.

My dear Smith:

Answering yours of the 27th, will say  
you handled the Tucson situation right.

I was thinking that we should have  
the motorcade about the last of April or  
early in May. What do you think?

Yours very truly,

EF:AH

April 3, 1924.

Mr. Walter C. Smith,  
Pinal County Highway Department,  
Florence, Arizona.

My dear Smith:

Please write a nice letter to the Yuma Chamber of  
Commerce, also the Holtville and El Centro Chambers of  
Commerce and thank them for their donations and give them  
a little history of what has been accomplished, what  
it means to them and hand them a good stiff letter and  
show your appreciation.

Write it on your county engineer paper showing  
who you are.

The above is just a suggestion.

Yours sincerely,

EF:KLM



**PINAL COUNTY  
HIGHWAY DEPARTMENT  
FLORENCE, ARIZONA**

ENGINEERING DEPARTMENT  
WALTER C. SMITH, COUNTY ENGINEER  
ROBERT B. ROE, ASS'T. ENGINEER  
GEORGE W. SIGLER, CLERK

April 5, 1924.

Colonel Ed Fletcher,  
San Diego, California.

My dear Colonel Fletcher:

I have today written to Monte Mansfeld suggesting that he move up the motorcade to the week beginning April 20th if possible. The roads east and west of Casa Grande are now in as good shape as I can have them for the motorcade. I am afraid if we hold up beyond that date the trucks hauling surfacing material will cut up the grade between the pit and Eloy. However I have told Monte that I will have a grading outfit cover the stretch before the motorcade starts to make it better traveling.

I have held up the work on the bridge at Gila Bend on account of the rains. I needed our equipment over in our county and the man I want on that job was needed in our yards. I am hoping to resume work early next week. I fully expect to have it completed in ten days.

The Holt representative was in the office yesterday remarking about the Cut-Off. He did not know I had anything to do with it at first. He told me that he left Gila Bend at 3:15 the afternoon before, stopped in Maricopa for a half hour and was in Casa Grande by 6:30. He reported the road in good shape. I told him to spread the word. He is one unprejudiced Phoenix man. He thinks there will be others among the traveling men.

Sincerely yours,

*Walter C. Smith*

April 5, 1924.

Mr. Hi Corbett,  
Tucson, Arizona.

My dear Mr. Corbett:

You no doubt are interested in diverting the tourists toward Tucson. You are, I know, aware of the advantages of the short cut, Tucson to Gila Bend via Casa Grande.

I am endeavoring to find suitable locations for road signs at each end of this Cut-off, and at the Florence-Superior Junction directing tourists toward Tucson and San Diego.

You are President of the Association that owns the corner property at the intersection of the Casa Grande and Florence highways. That corner would be an ideal site on which to erect the sign directing the tourists toward San Diego over the Cut-off. Is it available?

Very truly yours,

WALTER C. SMITH

County Engineer

S



BOARD OF SUPERVISORS  
H. H. McDONALD, CHAIRMAN  
ROBERT DENTON, MEMBER  
GEORGE E. TRUMAN, MEMBER  
C. H. NIEMEYER, CLERK

**PINAL COUNTY  
HIGHWAY DEPARTMENT  
FLORENCE, ARIZONA**

ENGINEERING DEPARTMENT  
WALTER C. SMITH, COUNTY ENGINEER  
ROBERT B. ROE, ASS'T. ENGINEER  
GEORGE W. SIGLER, CLERK

April 7, 1924.

Colonel Ed Fletcher,  
San Diego, California.

My dear Colonel Fletcher:

I would have written the "thank you" letters to Yuma and Imperial Valley before but have let it slide until I could write them all that the preliminary work including the bridge was done. I think it better not to wait as you suggest.

Surfacing of our Eloy stretch is moving swiftly. We have over a third of it completed already. Saturday I sent two more trucks with trailers to hasten the work and this morning I am sending another truck.

I enclose copies of the letters to Yuma, Holtville and El Centro.

Sincerely yours,

*Walter C. Smith*

Encl. 3

*Please return  
Ed from*

Tucson, Arizona

April 7, 1924.

Walter C. Smith,  
County Engineer,  
Florence, Arizona.

Dear Mr. Smith:

Replying to yours of April 5th regarding the sign at the corner of the Casa Grande and Florence Highway, will say that I will give you permission, as president of the Tucson cemetery Association, to use this corner for a sign, subject to the approval of our superintendent.

Yours very truly,

H. S. CORBETT

HSC:W



April 7, 1924.

Yuma Chamber of Commerce,  
Yuma, Arizona.

Gentlemen:

I have been waiting to tell you that the S. P. Cut-Off was completed but finances for the finishing touches have come in so slowly that I think you should have a report of the work as far as it has gone lest you think that we have forgotten you and your splendid cooperation.

We finished the grading of the 62 miles, Casa Grande to Gila Bend, a month ago. The rains which we experienced the past month gave me an opportunity to drag the road and iron out some of the chuck holes which traffic over the dry earth had cut into it.

From Casa Grande to the Pinal-Maricopa county line, 30 miles, I spent almost twice as much money per mile but the mileage in Maricopa County where your money and other donations were expended is in much better shape on account of the better road material in that county.

In Maricopa County the road is not a boulevard but for a road that cost us approximately \$150 a mile it is quite comfortable riding. I think nothing of making Gila Bend from Florence in my heavy car in three hours and a quarter, a distance of 95 miles. I could cut that with a Ford. I can make the entire distance from Tucson to Gila Bend in four hours, 130 miles. From Tucson to Phoenix it is 137 miles. Going west from Tucson over the Cut-Off you can be in Gila Bend by the time you can reach Phoenix via Florence. The tourist who cares to take in the Roosevelt Dam can save 45 miles by taking the Cut-Off at the Florence-Superior Junction going east or west. Traffic going west can be directed over the Cut-Off after reaching Florence and still save 69 miles.

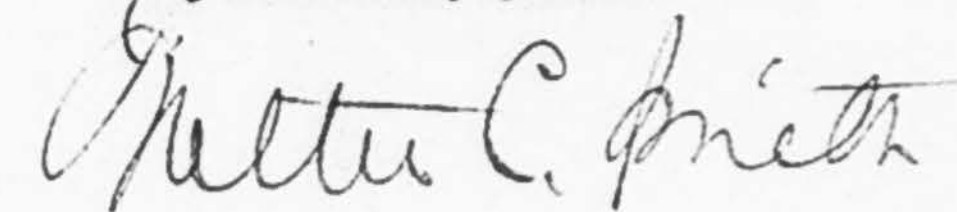
Preliminary work on the Cut-Off will be complete as soon as I finish the work on the bridge across the Gila Water Company canal at Gila Bend. Material for the bridge has been ordered and is on the ground and construction will start in a few days. Here three sixteen-foot spans will cut out a three-quarter mile detour and give a direct shoot eastward along the Southern Pacific tracks to Casa Grande and Tucson at the intersection of the Phoenix highway.

I feel that we have gone far toward assuring the adoption of this orphan route into the state highway system. It will take time and effort but if each individual who has donated will boost for this his own route we can accomplish much. You have my promise to stick with you and keep the Cut-Off maintained that your investment may be protected. I will do all in my power to improve the Casa Grande-Tucson stretch as quickly as our county funds will permit.

I want to take this opportunity of expressing my gratitude for your generosity in going out of your own county in the cause of good roads.

An amended "Bill 100" is being drafted. Let us stick together. Boost for the Cut-Off. It is worth while. You owe it to your friends at the eastern end, Casa Grande and Tucson. We on the east owe much to you men and we will boost for Yuma.

Very sincerely yours,



County Engineer.



April 7, 1924.

El Centro Chamber of Commerce,  
El Centro, California.

Gentlemen:

I have been waiting to tell you that the S. P. Cut-Off was completed but finances for the finishing touches have come in so slowly that I think you should have a report of the work as far as it has gone lest you think that we have forgotten you and your splendid cooperation.

We finished the grading of the 62 miles, Casa Grande to Gila Bend, a month ago. The rains which we experienced the past month gave me an opportunity to drag the road and iron out some of the chuck holes which traffic over the dry earth had cut into it.

From Casa Grande to the Pinal-Maricopa county line, 30 miles, I spent almost twice as much money per mile but the mileage in Maricopa County where your money and other donations were expended is in much better shape on account of the better road material in that county.

In Maricopa County the road is not a boulevard but for a road that cost us approximately \$150 a mile it is quite comfortable riding. I think nothing of making Gila Bend from Florence in my heavy car in three hours and a quarter, a distance of 93 miles. I could cut that with a Ford. I can make the entire distance from Tucson to Gila Bend in four hours, 130 miles. From Tucson to Phoenix it is 137 miles. Going west from Tucson over the Cut-Off you can be in Gila Bend by the time you can reach Phoenix via Florence. The tourist who cares to take in the Roosevelt Dam can save 45 miles by taking the Cut-Off at the Florence-Superior Junction going east or west. Traffic going west can be directed over the Cut-Off after reaching Florence and still save 69 miles.

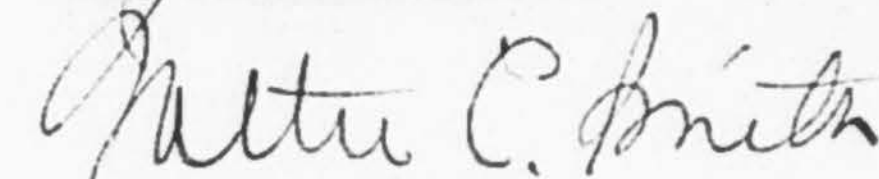
Preliminary work on the Cut-Off will be complete as soon as I finish the work on the bridge across the Gila Water Company canal at Gila Bend. Material for the bridge has been ordered and is on the ground and construction will start in a few days. Here three sixteen-foot spans will cut out a three-quarter mile detour and give a direct shoot eastward along the Southern Pacific tracks to Casa Grande and Tucson at the intersection of the Phoenix highway.

I feel that we have gone far toward assuring the adoption of this orphan route into the state highway system. It will take time and effort but if each individual who has donated will boost for this his own route we can accomplish much. You have my promise to stick with you and keep the Cut-Off maintained that your investment may be protected. I will do all in my power to improve the Casa Grande-Tucson stretch as quickly as our county funds will permit.

I want to take this opportunity of expressing my gratitude for your generosity in going out of your own state in the cause of good roads.

An amended "Bill 100" is being drafted. Let us stick together. Boost for the Cut-Off. It is worth while. You owe it to your friends at the eastern end. We on the east owe much to you men. We are boosting for the southern route, Yuma, Imperial Valley and San Diego.

Very sincerely yours,



County Engineer.



April 7, 1924.

Holtville Chamber of Commerce,  
Holtville, California.

Gentlemen:

I have been waiting to tell you that the S. P. Cut-Off was completed but finances for the finishing touches have come in so slowly that I think you should have a report of the work as far as it has gone lest you think that we have forgotten you and your splendid cooperation.

We finished the grading of the 62 miles, Casa Grande to Gila Bend, a month ago. The rains which we experienced the past month gave me an opportunity to drag the road and iron out some of the chuck holes which traffic over the dry earth had cut into it.

From Casa Grande to the Pinal-Maricopa county line, 30 miles, I spent almost twice as much money per mile but the mileage in Maricopa County where your money and other donations were expended is in much better shape on account of the better road material in that county.

In Maricopa County the road is not a boulevard but for a road that cost us approximately \$150 a mile it is quite comfortable riding. I think nothing of making Gila Bend from Florence in my heavy car in three hours and a quarter, a distance of 93 miles. I could cut that with a Ford. I can make the entire distance from Tucson to Gila Bend in four hours, 130 miles. From Tucson to Phoenix it is 137 miles. Going west from Tucson over the Cut-Off you can be in Gila Bend by the time you can reach Phoenix via Florence. The tourist who cares to take in the Roosevelt Dam can save 45 miles by taking the Cut-Off at the Florence-Superior Junction going east or west. Traffic going west can be directed over the Cut-Off after reaching Florence and still save 69 miles.

Preliminary work on the Cut-Off will be complete as soon as I finish the work on the bridge across the Gila Water Company canal at Gila Bend. Material for the bridge has been ordered and is on the ground and construction will start in a few days. Here three sixteen-foot spans will cut out a three-quarter mile detour and give a direct shoot eastward along the Southern Pacific tracks to Casa Grande and Tucson at the intersection of the Phoenix highway.

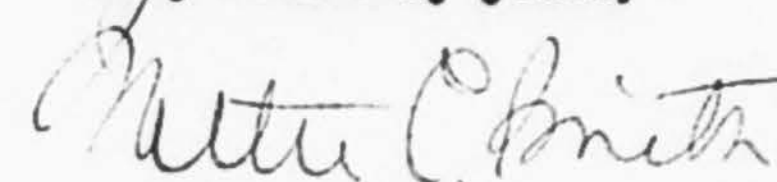
I feel that we have gone far toward assuring the adoption of this orphan route into the state highway system. It will take time and effort but if each individual who has donated will boost for this his own route we can accomplish much. You have my promise to stick with you and keep the Cut-Off maintained that your investment may be protected. I will do all in my power to improve the Casa Grande-Tucson stretch as quickly as our county funds will permit.

Page 1

I want to take this opportunity of expressing my gratitude for your generosity in going out of your own state in the cause of good roads.

An amended "Bill 100" is being drafted. Let us stick together. Boost for the Cut-Off. It is worth while. You owe it to your friends at the eastern end. We on the east owe much to you men. We are boosting for the southern route, Yuma, Imperial Valley and San Diego.

Very sincerely yours,



County Engineer.



PINAL COUNTY  
HIGHWAY DEPARTMENT

Florence, Arizona April 9, 1924.

Colonel Ed Fletcher,  
San Diego, California.

My dear Colonel Fletcher:

I am enclosing copies of my letter and a  
reply regarding the corner at the intersection of the  
Florence and Casa Grande highways out of Tucson.

Let me know if you want me to follow this up.

I am working on the Gila Bend intersection  
and a site at the Florence-Superior Junction.

Sincerely yours,

WALTER C SMITH

April 11, 1924.

Mr. Walter C. Smith,  
Pinal County Highway Department,  
Florence, Arizona.

My dear Smith:

Answering yours of April 9th, will say the San  
Diego-California Club is going to spend \$5000 as a minimum  
possibly \$10,000, in diverting travel to San Diego this  
coming year. Among other things they are going to put up  
a number of signs along the way and maintain them.

I want you to follow up the acquisition of the  
corner at the intersection of Florence and Casa Grande  
highways out of Tucson.

I have turned your correspondence over to the  
San Diego-California Club.

Yours very truly,

EF:KLM



BOARD OF SUPERVISORS  
H. H. McDONALD, CHAIRMAN  
ROBERT DENTON, MEMBER  
GEORGE E. TRUMAN, MEMBER  
C. H. NIEMEYER, CLERK

**PINAL COUNTY  
HIGHWAY DEPARTMENT  
FLORENCE, ARIZONA**

ENGINEERING DEPARTMENT  
WALTER C. SMITH, COUNTY ENGINEER  
ROBERT B. ROE, ASS'T. ENGINEER  
GEORGE W. SIGLER, CLERK

April 16, 1924.

Colonel Ed Fletcher,  
San Diego, California.

My dear Colonel Fletcher:

Thanks for your letter of the 11th and  
the copy of the Mansfeld letter.

I think it would be a good scheme for  
you to make the preliminary run through to Lordsburg  
and return. I hope you make the trip. I will see  
you for a few moments as you pass through or in  
Tucson. Our Arizona Yale Club is having a little  
dinner in Tucson on the night of the 24th and I will  
be there.

I hope the motorcade is moved ahead to take  
in the stunts at the Stadium. I have been planning  
to go ahead of the crowd and stop off in Yuma and  
Imperial Valley to thank our friends personally for  
the donations on the Cut-Off.

Sincerely yours,

*Walter C. Smith*

8

BOARD OF SUPERVISORS  
H. H. McDONALD, CHAIRMAN  
ROBERT DENTON, MEMBER  
GEORGE E. TRUMAN, MEMBER  
C. H. NIEMEYER, CLERK

**PINAL COUNTY  
HIGHWAY DEPARTMENT  
FLORENCE, ARIZONA**

ENGINEERING DEPARTMENT  
WALTER C. SMITH, COUNTY ENGINEER  
ROBERT B. ROE, ASS'T. ENGINEER  
GEORGE W. SIGLER, CLERK

May 19, 1924.

Colonel Ed Fletcher,  
San Diego, California.

My dear Colonel Fletcher:

The bridge across the Gila Water Canal at Gila  
Bend is completed. It was opened to the public last  
Wednesday.

I took some snap shots of the bridge and will  
send you a print as soon as I have the films developed.  
The people of Gila Bend seem well pleased with our gift  
to them and I think they ought to be.

We were unable to persuade the Water Company to  
turn out the water in the canal while we set the center  
piers. The boys had considerable trouble with the silt  
and I drove over and stayed on the job three days until  
the sub-structure was completed. The bridge will cost us  
about \$850. All bills are not yet in and I spent more than  
I had in the bank but Mr. Clements will collect the deficit  
in Casa Grande.

We succeeded in inducing the state highway maintenance  
crew to grade up the intersection and both approaches to the  
bridge so that the start of the Cut-Off at Gila Bend looks  
inviting. The road itself is getting rough and chucky in  
spots though I am still able to make the drive from Casa Grande  
to Gila Bend in two and a half hours. There seems to have been  
a great deal of traffic over it.

Sincerely yours,

*Walter C. Smith*

8

*Co. J. M. White*



May 22, 1924.

Mr. Walter C. Smith,  
Florence Arizona.

My dear Mr. Smith:

Answering yours of the 19th, congratulations on  
the construction of the bridge!

I am waiting for the snapshots and will run a good  
story as soon as I hear from you.

When do you think that the ban will be removed so  
we can promote our motorcade trip to San Diego. I am  
coming over as soon as we can get over and make arrangements  
for the trip and see you again.

Yours very truly,

EF:KLM

PINAL COUNTY  
HIGHWAY DEPARTMENT

Florence, Arizona

June 5, 1924.

Colonel Ed Fletcher,  
San Diego, California.

My dear Colonel Fletcher:

I have had no publicity given to the Phoenix  
papers about the S. P. Cut-Off yet. Some time ago I met  
the Maricopa County Engineer and asked him to maintain his  
section but without results. He said later in the summer  
he would drive over the route. The road is getting dusty  
and chunky though not nearly as bad as it used to be along  
the Casa Grande-Tucson highway. I am going to write an  
article and have some one in Casa Grande send it in to the  
papers. I have been sending road information about the  
route to the Federal Weather and Road Information Bureau at  
Phoenix for several weeks. I will have an article put in  
the Arizona Builder and Contractor about the bridge and  
follow with others. At the Arizona Good Roads Convention  
in Prescott this month I will spread the word if I am  
present. If not I will have Mr. Swanzy primed with the  
information.

I will follow the quarantine and send you word  
as soon as the coast is clear. We have finished the  
surfacing on the Casa Grande-Tucson road. I am now  
preparing to salvage a two-hundred foot steel span that  
floated downstream with last summer's floods on the San  
Pedro river. There are several good members in that  
structure which I hope to straighten and use on the Cut-Off  
west of Casa Grande to span the larger dips which hold  
water in the rainy season.

Before you receive this you have undoubtedly read  
that the San Carlos Bill passed the House. The valley has  
gone wild. On Saturday Casa Grande will stage a big celebration.  
Phoenix and Maricopa County cannot now refuse us a state  
highway through Casa Grande to Tucson. This puts Casa Grande  
in an enviable position. Tucson will necessarily derive much  
from another irrigation project on the main line of the  
Southern Pacific and she need no longer fear Phoenix. We are  
going to have our transcontinental highway yet and it will be  
our Cut-Off. For this county and valley the San Carlos means  
just the difference between bankruptcy and prosperity.

With kind personal regards,

WALTER C. SMITH

*Original to Mr. White*



June 9, 1924.

Mr. Walter C. Smith,  
Florence, Arizona.

My dear Mr. Smith:

Answering yours of the 5th, will say I was pleased to have a part in the San Carlos bill being put thru both in the house and the Senate.

I wish you could go to Prescott to the Good Roads Convention. I see Los Angeles people are going to be there and they are going to try and put something over, Carl McStay in particular.

The Yuma crowd telephoned me and urged me to go but I told them I had not been invited and it was out of the question at such a late date.

Yours very truly,

MP:KIM

CC\*FHW

BOARD OF SUPERVISORS  
H. H. McDONALD, CHAIRMAN  
ROBERT DENTON, MEMBER  
GEORGE E. TRUMAN, MEMBER  
C. H. NIEMEYER, CLERK

ENGINEERING DEPARTMENT  
WALTER C. SMITH, COUNTY ENGINEER  
ROBERT B. ROE, ASS'T. ENGINEER  
GEORGE W. SIGLER, CLERK

PINAL COUNTY  
HIGHWAY DEPARTMENT  
FLORENCE, ARIZONA

June 16, 1924.

Colonel Ed Fletcher,  
San Diego, California.

My dear Colonel Fletcher:

I am very glad to know that you took an active part in securing the passage of the San Carlos bill. The atmosphere is noticeably brighter in this section these days. Though there will be no immediate action on the San Carlos the construction of the power line system is well underway and that helps to keep the people in good humor.

I could not get off to Prescott. The political wheel is erratic in its movements. For the time being at least my hands are tied in my efforts on the S. P. Cut-Off. I am being accused of graft in connection with that work, misuse of county equipment and neglect of duty. It all started when I put the skids under one of my mechanics, a Florence man, hanger-on and disturber. Everything is clean and on the square and I do not worry. I am sitting tight and waiting for my chance. Such things are bound to come up on the eve of election.

In confidence--even Mr. Swanzy seems to entertain a little animosity for me because I have unwittingly employed a man who was personally obnoxious to him. Swanzy is understood to have threatened to withdraw his support from Mr. Denton, our friendly supervisor, on that account. The man in question quit when word was brought to him to protect Denton and me. Swanzy went to Prescott and I have had no opportunity to talk with him. Mr. Clements is with me, I feel certain. He tipped me off the other day.

I do not think that Phoenix and Los Angeles will succeed in passing the Blythe road bill now being circulated. I am going to fight it. I will have an opportunity to follow the sentiment. I have a sub-contract from the Pacific Construction Company to furnish rock and sand for the nine miles of concrete pavement west from Buckeye. That also is causing me some embarrassment. I have about the nicest job the county affords and attend to it. In some peoples' eyes my activity should cease with that and I should not engage in other lucrative business. There is no premium on industry here.

Robert Roe, my assistant, is leaving me for a cooler country. He is bound for the northwest via San Diego. He stops off there to visit with a cousin and I hope he will take the opportunity to say hello to you. He is a splendid chap, another Yankee, and I am mighty sorry to lose him. From now on I will sail alone.

*Walter C. Smith*  
*Walter C. Smith*



June 18, 1924.

Mr. Walter C. Smith,  
Florence, Arizona.

My dear Smith:

Mighty sorry to get your letter of the 16th, but I do hope things will straighten out right for you. Please keep me posted on that Blythe road bill that Phoenix and Los Angeles are circulating.

I will be glad to see Roe.

Am leaving for a week's vacation, but please stick this in your noodle, and you will get a lot of comfort.

"To avoid criticism,  
Be nothing  
Say nothing  
Do nothing."

Again, -

"We will grow strong by calmness and moderation; we will grow strong by the violence and injustice of our adversaries."

Abraham Lincoln.

With kind regards, I am

Yours very truly,

EF:KLM

BOARD OF SUPERVISORS  
H. H. McDONALD, CHAIRMAN  
ROBERT DENTON, MEMBER  
GEORGE E. TRUMAN, MEMBER  
C. H. NIEMEYER, CLERK

ENGINEERING DEPARTMENT  
WALTER C. SMITH, COUNTY ENGINEER  
ROBERT B. ROE, Ass't. ENGINEER  
GEORGE W. SIGLER, CLERK

PINAL COUNTY  
HIGHWAY DEPARTMENT  
FLORENCE, ARIZONA

June 28, 1924

Colonel Ed Fletcher,  
San Diego, California.

My dear Colonel Fletcher:

I have heard from all letters I sent out about the Blythe route except those I sent to Tucson. Mr. Buxton and Mr. Herring at Douglas wrote me that their community was against the Blythe run, of course, but said that sentiment was against any bond issue for road construction at this time and for another year at least. Mr. Robertson at Yuma wrote me at length setting forth information regarding Senator Wilkinson's personal interest in the Blythe program.

I talked with the Junior Chamber president at our Phoenix dinner. His own enthusiasm does not run high and from his conversation I gather that the proposition was saddled on the Chamber by the Senator. They hope to secure the number of names required to place the measure on the ballot but hope for little success at the polls. I talked with Swanzy the day before yesterday about it more at length and he assured me that the Senator and his Riverside County friends received a very cool reception at the Good Roads meeting.

Alexander sent me copies of the Yuma Sun and Star reporting the Good Roads meeting and printing copies of correspondence between the Yuma and Phoenix Chambers of Commerce. I do not think the Blythe bill will have a ghost of a chance and the general public seems to stay with the seven per cent system and the highway to Yuma. I will keep you posted.

The political situation is easing up. The thunder has passed and the clouds are gradually blowing away.

Here in the office I am snowed under with work. I miss Roe. I had a letter from him today written at San Francisco. I am very glad that he found the opportunity to see you. He wrote me that you had given him a letter to Mr. Morton. I will vouch for him. His loyalty is one hundred per cent fine.

Very truly yours,

Walter C. Smith



**PINAL COUNTY  
HIGHWAY DEPARTMENT  
FLORENCE, ARIZONA**

July 19, 1924.

Colonel Ed Fletcher,  
San Diego, California.

My dear Colonel Fletcher:

I spent a couple of days in Imperial County a week ago, called there on some mining work.

At the end of the plank road I met "Peg" Hunt who is on the job there again with a new store.

I stopped a few minutes at the Yuma Chamber of Commerce. They are busy working up propaganda against the Blythe route.

We were not molested by the Federal or Arizona departments on our return. No fumigation and nothing but a cursory examination to determine whether we had animals in our car.

The road between Piedra and Aztec is in pretty fine shape except for about four miles that have not yet been surfaced. Judging from the size of the state camp and equipment on the ground, this work should be finished in at least a month. The worst stretch along the route to El Centro is that leading out of Yuma to Knob Siding. We drove over a part of California's new surfaced road on our return. I do not see how the "frog route" can survive when these two links are finished. I drove from Phoenix to Yuma in a little over seven hours.

I did not take the S. P. Cut-Off but stopped at the bridge and looked up the trail. At the Gila Bend end the road looked quite dusty and chunky. One Florence party said that he took that route and could not make over five miles an hour but some California people took the road and returned that same way. I think there is a little Florence prejudice involved.

I have succeeded in securing authority to purchase a 40 H. P. Holt tractor and am quite sure I can get another shortly. The second one will make the Cut-Off. That means better maintenance all along the line.

Sincerely yours,

Walter C. Smith

cc - Mr. White  
B

July 21, 1924.

Mr. Walter C. Smith,  
Florence, Arizona.

My dear Mr. Smith:

Glad to hear from you under date of the 19th. I am going to stir things up as soon as the hot weather is over all along the route.

I saw Jasper of Jasper Stacey Company the day before yesterday, and he says that he is going right ahead with your power line - great stuff.

I hope to see you in the near future.

Yours very truly,

EF:AH



March Twenty-first,  
1 9 2 9

Mr. Walter C. Smith  
2019 N. 9th St.,  
Phoenix, Ariz.

Dear Mr. Smith:

Enclosed find clipping that was mailed to me.

What do you think the entire job is going to cost  
and what road are they building, the one you recommended  
or the other one?

Yours truly,

EF:AK

## Calexico Firm Bids Low On Gila Bend Road

The Pioneer Transfer company of Calexico, Calif., submitted the lowest of three bids opened yesterday by the state highway commission for the construction of 12 miles of road on the Casa Grande-Gila Bend highway. It was announced by M. C. Hankins, secretary to the commission.

Bids were asked for the road construction with two types of bridges, one of wood and the other of concrete. For the work with the six 20-foot bridges to be built of wood, the Pioneer Transfer company bid \$51,655.10 and \$57,325.60 for the work with concrete bridges.

John Mulligan of El Paso submitted a bid of \$54,980.68 for wooden bridges and \$60,878.18 for concrete bridges. Tanner and Packard of Joseph City, Ariz., bid \$64,882.23 for the work with wooden bridges and did not bid on the job with concrete structures.

The contract when awarded will call for the grading of the road and the construction of all necessary drainage structures including six small bridges with a clear span of 20 feet or more.

The stretch to be constructed under the contract will start at the Maricopa county-Pinal county line, 31 miles east of Gila Bend and run east toward Casa Grande.



WALTER C. SMITH  
MINING ENGINEER

2019 North 9th Street,  
Phoenix, Arizona,  
March 27th 1929.

My dear Colonel Fletcher:

Replying to your letter of the 21st with enclosed clipping on the Casa Grande-Gila Bend Cut-Off.

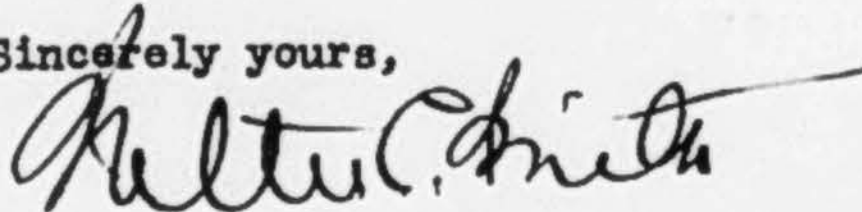
They are building the "other one". The money for the road down the track or the money appropriated for the improvement of the road designated by the legislature lies in the state treasury awaiting a decision of the state supreme court. The money building the present road is coming from Maricopa County and other sources unknown to me or to the general public. The road they are building will not conform to the standards they set for the one down the track. However, there is the road. There is the short-cut across the state though it does not exactly follow the route I had in mind. The purpose is accomplished. However it does destroy my hopes for an even much shorter road from coast to coast via the Coolidge Dam, Casa Grande Ruins National Monument and Sacaton.

With a change in method of attack Fraser and I are through with the shaft job at the Meteor Crater. We struck 300 gallons of water in a few rounds and so the company is now trying a cementation process heretofore used in Wales. This method eliminates our crew at a depth of 678 feet, a point we reached last October. Since then the management has been making up its mind.

Fraser's son, his only boy, is leaving tonight for San Diego where he is joining the navy for heavier than air training. Fraser and I had hoped to drive over with him to look at a shaft we understand the Ambursen Dam people are contemplating sinking over in Tia Juana. I wrote them some time ago and had no reply. However we cannot make the trip.

Saw Coupal the other day and learned he used the powder without taking any pains to observe results and follow it through.

Sincerely yours,



Colonel Ed Fletcher,  
San Diego, California.

P. S. Nevada Consolidated and Magma Copper are perusing Arizona Prince reports with intention of investigating.



**Ed Fletcher Papers**

**1870-1955**

**MSS.81**

**Box: 26 Folder: 3**

**General Correspondence - Smith, Walter C.**



**Copyright:** UC Regents

**Use:** This work is available from the UC San Diego Libraries. This digital copy of the work is intended to support research, teaching, and private study.

**Constraints:** This work is protected by the U.S. Copyright Law (Title 17, U.S.C.). Use of this work beyond that allowed by "fair use" requires written permission of the UC Regents. Permission may be obtained from the UC San Diego Libraries department having custody of the work (<http://libraries.ucsd.edu/collections/mscl/>). Responsibility for obtaining permissions and any use and distribution of this work rests exclusively with the user and not the UC San Diego Libraries.