

ESTABLISHED 1870.

NATIONAL METER COMPANY

MANUFACTURERS OF
CROWN, EMPIRE, NASH, GEM, PREMIER, COMPOUND, MAGNO-SEAL.

WATER METERS.
OIL & HOT WATER METERS.
NASH GAS ENGINES.

CHICAGO, BOSTON,
PITTSBURG, CINCINNATI,
SAN FRANCISCO, LOS ANGELES,
ATLANTA.

428 I.W.HELLMAN BUILDING

LOSANGELES Feb. 13, 1914.

Mr. Lou B. Mathews, Secy.,
Cuyamaca Water Co.,
San Diego, Cal.

Dear Sir:

Your favor of the 12th inst., enclosing check
for \$141.75 and Vouchers as stated, duly to hand.

We are returning herewith receipted Voucher and
Invoice, as you requested.

We note that you have recently used 7- 5/8" x
3/4" Nash Meters, and we will send you an Invoice for these
in the near future.

Thanking you for your kind consideration, we
remain,

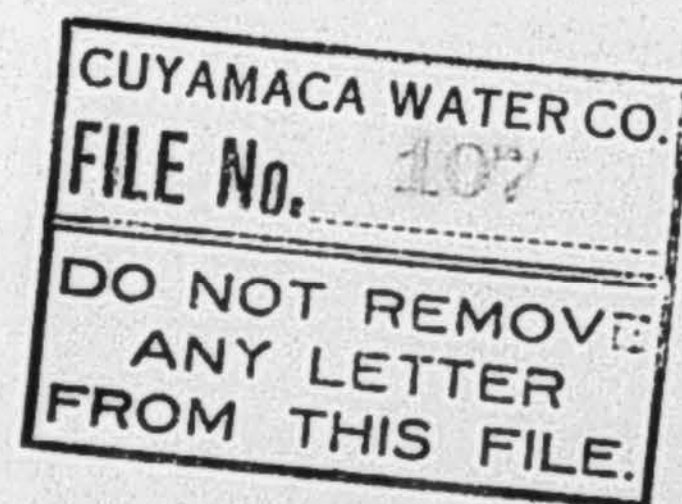
Yours very truly,

NATIONAL METER COMPANY,

Per

J. J. Watton

Enc.



ESTABLISHED 1870.

NATIONAL METER COMPANY

MANUFACTURERS OF
CROWN, EMPIRE, NASH, GEM, PREMIER, COMPOUND, MAGNO-SEAL.

WATER METERS.
OIL & HOT WATER METERS.
NASH GAS ENGINES.

CHICAGO, BOSTON,
PITTSBURG, CINCINNATI,
SAN FRANCISCO, LOS ANGELES,
ATLANTA.

428 I.W.HELLMAN BUILDING

LOSANGELES June 1, 1914.

Cuyamaca Water Co.,

San Diego, Calif.

Gentlemen:

Your valued order #986, calling for repair parts
as specified for 4" AAX Gem Meters, duly to hand.

We beg to advise that at the present time we do
not carry repair parts for the series mentioned (#495,084)
in Los Angeles Stock. We are therefore forwarding your order
to our New York Office, with instructions to rush the goods
required direct to you, via Parcel Post or Express, prepaid.
We regret our inability to fill your order from this office,
but assure you that the same will receive prompt and careful
attention.

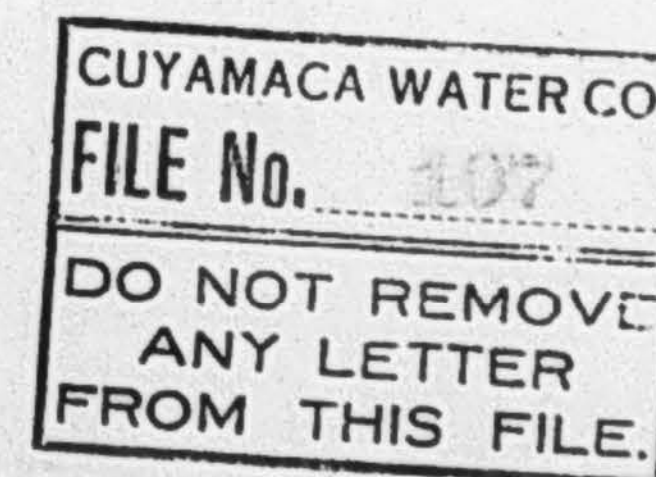
Thanking you for your kind consideration, we remain,

Yours very truly,

NATIONAL METER COMPANY,

Per

J. J. Watton



NATIONAL METER COMPANY

MANUFACTURERS OF
CROWN, EMPIRE, NASH, GEM, PREMIER, COMPOUND, MAGNO-SEAL.
WATER METERS.
OIL & HOT WATER METERS.
NASH GAS ENGINES.

CHICAGO, BOSTON,
PITTSBURG, CINCINNATI.
SAN FRANCISCO, LOS ANGELES,
ATLANTA.

428 I.W. HELLMAN BUILDING

LOS ANGELES Sept. 2, 1914.

MAIN OFFICE
NEW YORK
JOHN C. KELLEY, PRESIDENT.
JOHN C. KELLEY, JR. SECRETARY.

Mr. L. B. Mathews, Secy.,
Cuyamaca Water Company,
San Diego, Calif.

Dear Sir:

Upon the occasion of our Mr. Caley's recent visit to San Diego, he endeavored to meet Colonel Fletcher, but owing to the Colonel's pressing business engagements was unable to gain an interview.

We should like very much to send your company 100- 5/8" x 3/4" #11 Composition Nash Meters on consignment, to be used as required, as was done in the case of the last lot of meters shipped to you. The demand for the Type 11 Nash steadily continues and this meter is giving entire satisfaction wherever used. If our proposal appeals to you, and you will allow us to make the consignment mentioned, kindly advise us and the shipment will go forward promptly.

Thanking you for your kind consideration, we remain,

Yours very truly,

NATIONAL METER COMPANY,

Per

J. H. Matton

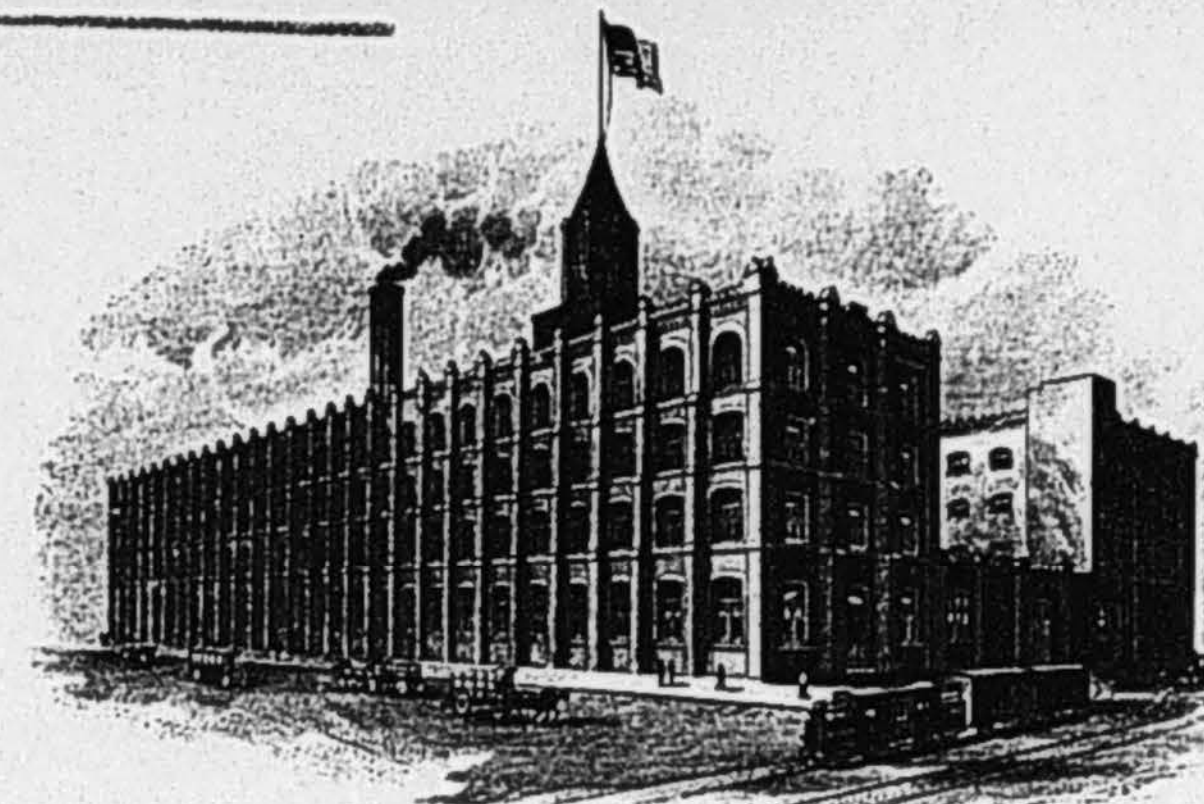
CUYAMACA WATER CO.
FILE No. 107
DO NOT REMOVE
ANY LETTER
FROM THIS FILE.

NATIONAL METER COMPANY,

NEW YORK
84 & 86 CHAMBERS ST.
CHICAGO
1227 WABASH AVE.
BOSTON
155 FRANKLIN ST.

DIRECTORS
JOHN C. KELLEY, JR. PRESIDENT.
JOHN L. LAWRENCE, VICE PRESIDENT.
FRANK VINTEN, SECY & TREAS.
JOHN McNAMEE.
FRED. J. BRADLEY.

CABLE "CROWN" NEW YORK
CODES
A.B.C. 4TH & 5TH EDITIONS
WESTERN UNION
LIEBERS



PITTSBURG
4 SMITHFIELD ST.
SAN FRANCISCO
141 NEW MONTGOMERY ST.
CINCINNATI
224 EAST FOURTH ST.
LOS ANGELES
411 SOUTH MAIN ST.

MANUFACTURERS OF
CROWN, EMPIRE,
NASH-GEM & PREMIER
WATER METERS
NASH GAS ENGINES.

NEW YORK Oct. 8th, 1914

Cuyamaca Water Co.,

San Diego, Cal.

Dear Sirs:

We must call your attention to the enclose account amounting to \$627.52; a portion of this balance has been standing for over a year.

As we are most anxious to close our books for 1913, we would appreciate your favoring us with a check in settlement.

Yours very truly,

NATIONAL METER COMPANY,

Robert Kelley

RSK/EW
Enc.

CUYAMACA WATER CO.
FILE No. 107
DO NOT REMOVE
ANY LETTER
FROM THIS FILE.

NATIONAL METER COMPANY

MANUFACTURERS OF
CROWN, EMPIRE, NASH, GEM, PREMIER, COMPOUND, MAGNO-SEAL.
WATER METERS.
OIL & HOT WATER METERS.
NASH GAS ENGINES.

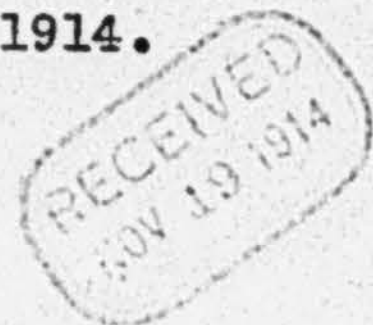
CHICAGO, BOSTON,
PITTSBURG, CINCINNATI,
SAN FRANCISCO, LOS ANGELES,
ATLANTA.

MAIN OFFICE
NEW YORK
JOHN C. KELLEY, PRESIDENT.
JOHN C. KELLEY, JR. SECRETARY.

428 I.W. HELLMAN BUILDING

LOS ANGELES November 18, 1914.

Mr. Lou B. Mathews, Secy.,
Cuyamaca Water Co.,
San Diego, Calif.



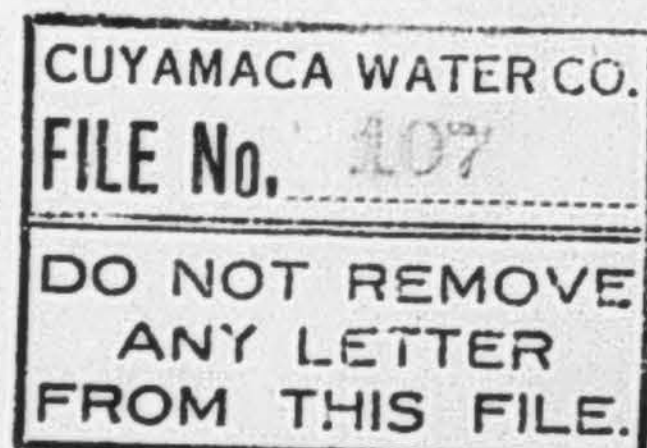
Dear Sir:

On reference to your letter of May 13, 1914, we find that at that time you desired bills rendered for 72- 5/8" x 3/4" #11 Nash Meters which your company were installing, and that you stated a check would be sent us in due time to cover the same. Not having heard from you further in this regard, we take this opportunity to ask whether the bills were correct and matters satisfactory. If so we would be pleased to receive your check in full of account as mentioned in your letter.

Thanking you for your kind consideration, and hoping to hear from you at your early convenience, we remain,

Yours very truly,

NATIONAL METER COMPANY,



CREDIT DEPARTMENT

Per

J. J. Watton

NATIONAL METER COMPANY

MANUFACTURERS OF
CROWN, EMPIRE, NASH, GEM, PREMIER, COMPOUND, MAGNO-SEAL.
WATER METERS.
OIL & HOT WATER METERS.
NASH GAS ENGINES.

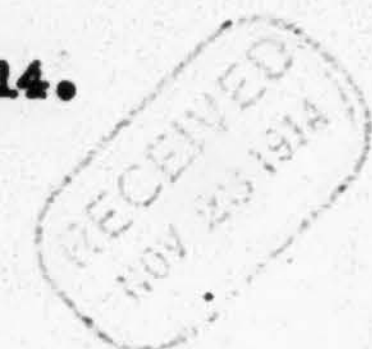
CHICAGO, BOSTON,
PITTSBURG, CINCINNATI,
SAN FRANCISCO, LOS ANGELES,
ATLANTA.

MAIN OFFICE
NEW YORK
JOHN C. KELLEY, PRESIDENT.
JOHN C. KELLEY, JR. SECRETARY.

428 I.W. HELLMAN BUILDING

LOS ANGELES Nov. 20, 1914.

Mr. Lou B. Mathews, Secy.,
Cuyamaca Water Co.,
San Diego, Calif.



Dear Sir:

We beg to acknowledge receipt of your letter of the 19th inst., enclosing check for \$561.00, in payment of bills as mentioned.

In accordance with your request we have receipted the Vouchers, and are enclosing same herewith.

We have instructed our San Francisco Store to ship your company the following at once, as per your order #1113:

3- 5/8" #11 Nash Discs;
3- 4 " AAX Gem Change Gears #39.

Thanking you for your kind consideration, we remain,

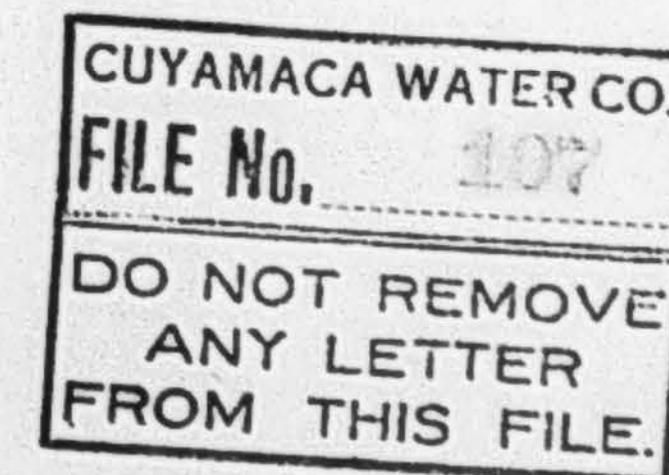
Yours very truly,

NATIONAL METER COMPANY,

Per

J. J. Watton

3 Encls.



167
March 10, 1915.

National Meter Co.,
H W Hellman Bldg.,
Los Angeles, Cal.

Dear Sirs:-

Enclosed please find statement received today from your New York offices showing that we are indebted to your Company in the amount of \$121.15. This is news to us as my impression was that we had paid your Company for everything we owe them for. Kindly let me hear from you as to what these items are for at your convenience, and oblige.

Yours very truly,

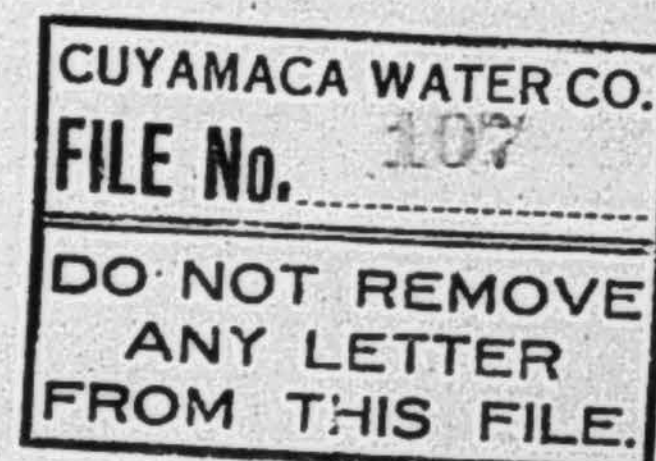
Cuyamaca Water Co.,

By

Secretary.

LBM-BK

Encl.



167
TELEPHONES PACIFIC-BROADWAY 1511
HOME -F 6377

ESTABLISHED 1870.

167
GEORGE H. BAILEY,
PACIFIC COAST MANAGER.

NATIONAL METER COMPANY

MANUFACTURERS OF
CROWN, EMPIRE, NASH, GEM, PREMIER, COMPOUND, MAGNO-SEAL,
WATER METERS.
OIL & HOT WATER METERS.
NASH GAS ENGINES.

MAIN OFFICE
NEW YORK
JOHN C. KELLEY, PRESIDENT.
JOHN C. KELLEY, JR. SECRETARY.

CHICAGO, BOSTON,
PITTSBURG, CINCINNATI,
SAN FRANCISCO, LOS ANGELES,
ATLANTA.

428 I.W. HELLMAN BUILDING

LOS ANGELES March 12, 1915.

Mr. Lou B. Mathews, Secy.,
Cuyamaca Water Co.,
San Diego, Calif.

Dear Sir:

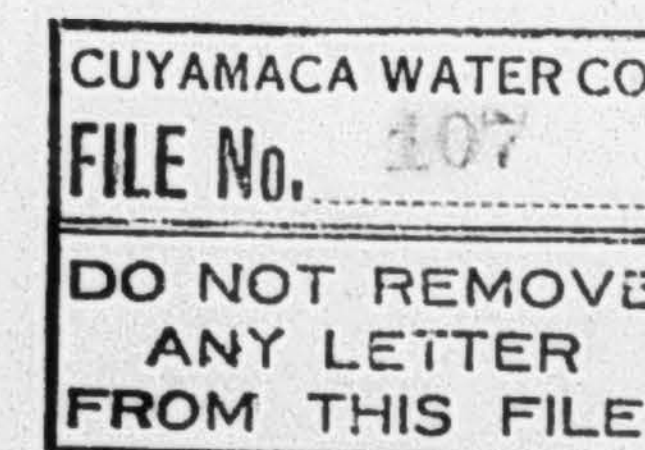
Your letter of the 10th inst., with enclosure as stated, was duly received. In reply would say that, according to our records at this office, your account is balanced. Your last remittance, however, reached our New York Office after the statement was issued, which accounts for the first item charged, i.e., \$10.15. We believe the second item, \$111.00, has been charged to your account in error, as we billed a similar amount to another concern on the same date that appears on the statement, and have yet to receive the proper confirmation from our Home Office. As the books of the Company are kept in New York City, you can readily see that it is possible for errors and discrepancies to appear occasionally, unless all of the accounts are checked over carefully. We are this day requesting our New York people to correct your account, and advise you accordingly.

Thanking you for your kind consideration, we are,

Yours very truly,

NATIONAL METER COMPANY,

Per *J. J. Watron*



CUYAMACA WATER CO.
 FILE No. 107
 DO NOT REMOVE
 ANY LETTER
 FROM THIS FILE.

August 2, 1915.

National Meter Co.,

Los Angeles, Cal.

Gentlemen:-

We have recently had 4 inch Gem meter No. 495085 tested at the City shops with the following results:

With the flow of 75 gallons through a 2 inch discharge with pressures of 23 $\frac{1}{2}$ at the inlet and 13 $\frac{1}{2}$ at the outlet, the meter was found to register 3 $\frac{1}{2}$ % over the actual flow.

With 75 gallons of water discharged through 1 inch outlet 40 $\frac{1}{2}$ pressure at inlet and 32 $\frac{1}{2}$ pressure at the outlet, the meter was found to register 2% over.

Not being equipped to test the meter with a larger outlet pipe, it was estimated that the percentage of error was 5 $\frac{1}{2}$ % over on full flow.

Can you furnish us with new gears to correct this error? Our normal discharge being 1 cu. ft. per second, the change gear now in use having 69 teeth and the register teeth having 33 teeth.

We would be pleased to have you ship these new gears at your earliest convenience and will be glad to furnish you any additional information you may require.

Yours very truly,

Assistant Manager.

FME:BK

TELEPHONE SUTTER 1956

ESTABLISHED 1870.

NATIONAL METER COMPANY

MANUFACTURERS OF

WATER METERS

141 NEW MONTGOMERY STREET

MAIN OFFICE
 NEW YORK
 JOHN C. KELLEY, JR.
 PRESIDENT.

CHICAGO, BOSTON,
 PITTSBURGH, CINCINNATI,
 ATLANTA, WINNIPEG,
 LONDON, ENG.
 SAN FRANCISCO, LOS ANGELES.

SAN FRANCISCO Aug. 9, 1915.

Mr. F. M. Faude,
 Asst. Mgr. Cuyamaca Water Co.,
 San Diego, Cal.

Dear Sir:-

Replying to your favor of the 2d inst. which was addressed to us at Los Angeles, we desire to say that we note the test made on a 4" Gem meter at the City Shops in San Diego and that this test is erratic. We are acquainted with the methods used in testing large meters at the City Shops and aware of the fact that their inlet pipe is but 2" in diameter. They use the Mueller Testing Machine and weigh the water. This testing machine is not intended to test meters above 2" in size but by improvising an increaser they are enabled to test larger than 2" meters. The flow, however, cannot be greater than the volume of a 2" pipe and fairly accurate results are obtained with any make of disc meter or displacement meter. The Gem is not of these types but is dependent entirely on measuring the velocity of the flow. A 4" meter should probably go on a 4" pipe and is so tested at the factory. If you arrange to put a 4" meter on a 2" pipe you get a different velocity of the incoming flow than you would on a 4" line delivering the same quantity of water per minute. Consequently we claim that the method mentioned in your letter and which we have described is not correct for any velocity meter above 2" and this would appear to be borne out by the erratic test obtained. There is no way in which it can be estimated what the possible error might be in this meter. Were it tested with larger inlet pipes and were we to send you gears to correct the error of 5% you might find that when the meter was properly placed no such error occurred. The size of the outlet pipe might range from 4" to $\frac{1}{2}$ " and still give you accurate registration, but in a velocity meter the inlet pipe must be the size the meter is designed to work on. We would suggest that a more correct method of testing this meter would be to connect it to a 4" service main and use a 2" displacement meter at the outlet; assuming, of course, that the 2" meter is correct you would then get a correct test and would know how to gear the big meter if wrong. The normal change gears for the meter in question is 66 teeth on the driver and 34 teeth on the driven. We have no record of the gears originally on this meter when tested at the factory but will write for the same today and will be in a better position to advise you when we have this information. We can furnish you with any gears you may think best to use to change the registration of this meter but personally the writer would never be satisfied with the test conducted as stated in your letter. If you still want the gears as requested kindly advise us and they will be forwarded promptly.

Yours very truly,

NATIONAL METER COMPANY,

By,

Pacific Coast Manager.

CUYAMACA WATER CO.
 FILE No. ~~107~~
 DO NOT REMOVE
 ANY LETTER
 FROM THIS FILE.

CUYAMACA WATER CO.
FILE No. 107
DO NOT REMOVE
ANY LETTER
FROM THIS FILE.

107
[1917]
August 11, 1915.

Mr. Harritt:

I enclose copy of a letter from the
National Meter Co. regarding the test on the
4" Gem Meter of the Lemon Grove Mutual Water Co.

F. M. Faude.

FMF-BK

CUYAMACA WATER CO.
FILE No. 107
DO NOT REMOVE
ANY LETTER
FROM THIS FILE.

107
August 12, 1915.

National Meter Co.
Mr. George H. Bailey,
Pacific Coast Manager,
141 New Montgomery St.,
San Francisco, Cal.

Dear Sir:-

Your letter of August 9th regarding test
on a 4 inch Gem meter for this company at the city
shops at San Diego, has been received and we thank
you for the information contained in your letter.

We will endeavor to have a test made
along the lines you outlined and unless you hear
from us further, please disregard our order for
gears to correct the supposed error in the meter.

Very truly yours,

Assistant Manager.

FMF-BK

NATIONAL METER COMPANY

MANUFACTURERS OF

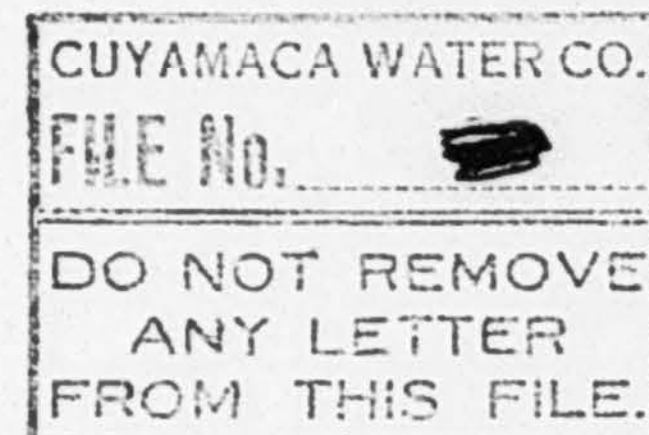
WATER METERS

141 NEW MONTGOMERY STREET

SAN FRANCISCO Aug. 25, 1915.

MAIN OFFICE
NEW YORK
JOHN C. KELLEY, JR.
PRESIDENT.CHICAGO, BOSTON,
PITTSBURGH, CINCINNATI,
ATLANTA, WINNIPEG,
LONDON, ENG.
SAN FRANCISCO, LOS ANGELES.

Mr. F. M. Faude, Ass't Mgr.,
Cuyamaca Water Company,
San Diego, Calif.



Dear Sir:-

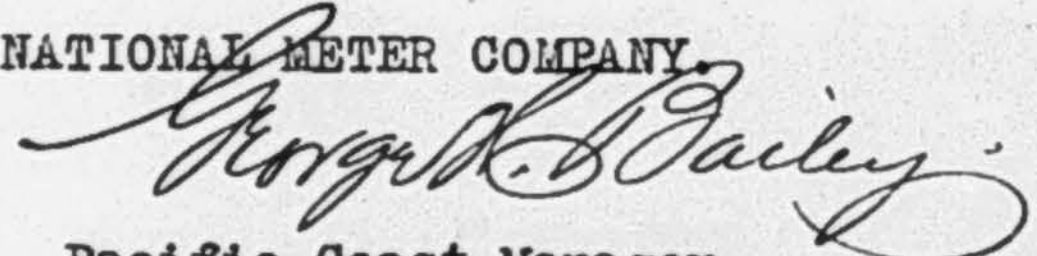
Referring again to your letter of August 2d with reference to a 4" Gem Meter #495,085 we have just received advice from our factory that this meter should have on the driving gear 67 teeth and on the register gear 33 teeth. This is the way that the meter was geared when tested at the factory originally.

You can, therefore, be sure that since it was sent out by us it has been re-geared and the difference of two teeth on the driving gear would make a difference of about 3%. In other words, the meter has been speeded up about that amount since it was originally tested at the factory.

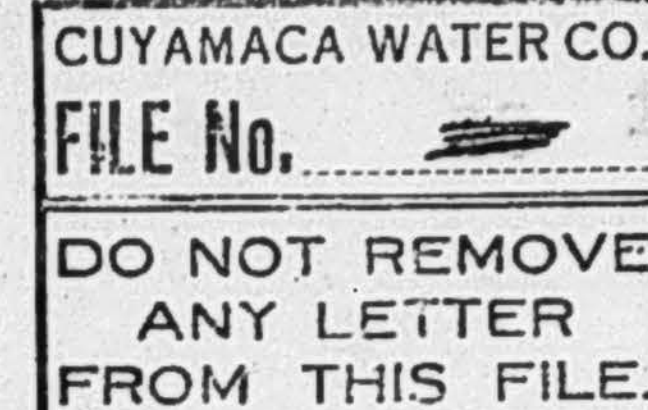
We shall be glad to hear from you as to whether the test made in accordance with our suggestion proved the necessity of re-gearing the meter.

Yours very truly,

NATIONAL METER COMPANY


Pacific Coast Manager.

GB/T



August 27, 1915.

National Meter Co.,
141 New Montgomery St.,
San Francisco, Cal.

Gentlemen:-

Attention Mr. George H. Bailey, Pacific Coast Mgr.

Your letter of August 25th with reference to 4 inch
Gem meter No. 495085, has been received, and contents noted.

We have made arrangements to send this meter to the
Los Angeles City Water Department shops for test, they being
equipped to handle all sizes of meters and in view of these
arrangements we have not made any tests ourselves.

I will be pleased to send you the results of this
test which may not be received for several weeks and desire
to thank you for your interest and the information contained
in your letters.

Yours very truly,

Assistant Manager.

FMF-BK

ESTABLISHED 1870.

GEORGE H. BAILEY,
PACIFIC COAST MANAGER.

NATIONAL METER COMPANY

MANUFACTURERS OF

WATER METERS

141 NEW MONTGOMERY STREET

SAN FRANCISCO July 12, 1916.

Cuyamaca Water Company,

San Diego, Calif.

Gentlemen:

In accordance with your valued order #1484,
we have shipped your company the following Meter Re-
pair Parts, by Parcel Post:

12- 5/8" #11 Nash Change Gears #28;
12- 5/8" " " " " 29;
50- 5/8" " " " Cylinder Screws.

We are mailing to you, under separate cover,
catalogues describing our Nash and Gem Meters, as per
your request.

Thanking you for your kind consideration,
we are,

Yours very truly,

NATIONAL METER COMPANY,

Per

H. J. Watton

107

WESTERN UNION

Form 2589

RECEIVERS NO.	TIME FILED	CHECK
---------------	------------	-------

DAY LETTER

THEO. N. VAIL, PRESIDENT

SEND the following Day Letter, subject to the terms
on back hereof, which are hereby agreed to

July 17, 1916.

National Meter Co.
141 New Montgomery St.,
San Francisco, Cal.

Ship by express two intermediate gear trains and frames complete
for four inch Gem meters, style AAX. Please rush. If not in
stock in San Francisco, order by wire from factory and have
shipped direct by express.

Cuyamaca Water Company.

(Chg Cuyamaca Water Co.)

107

NATIONAL METER COMPANY

MANUFACTURERS OF

WATER METERS

141 NEW MONTGOMERY STREET

SAN FRANCISCO July 19th, 1916.

Cuyamaca Water Company,
San Diego, California.

Gentlemen:

We beg to advise, in accordance with your telegram of the 17th inst., that we have shipped you promptly by Wells Fargo Express:

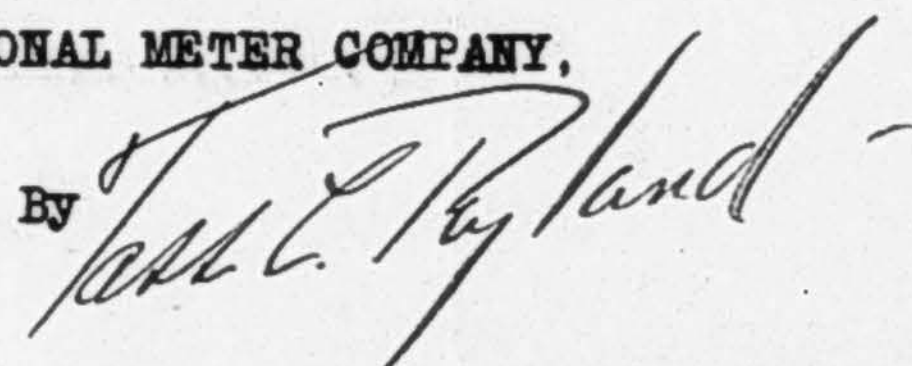
2 - 4" Gem Intermediates, complete.

Trusting this shipment will reach you without delay, and thanking you for your valued order, we are

Yours very truly,

NATIONAL METER COMPANY,

BY



TCR-FWC

107

September 5, 1916

National Meter Co.,
8486 Chamber St.,
New York, N.Y.

Gentlemen:-

Will you please send us price list of meter repair parts for 5/8 inch Dash meter covering Meters No. 964,314 to 964,328.

Also from 970,516 to 970,600.

Also price list of repair parts for 2 inch and 4 inch Gem meters and 3 inch Trap Gem Meters.

Yours very truly,

Assistant Manager.

F.M.F.:K

P.S. Please address F M Faudé and not the Company when sending these price lists of repair parts.

F.M.F.

ESTABLISHED 1870.

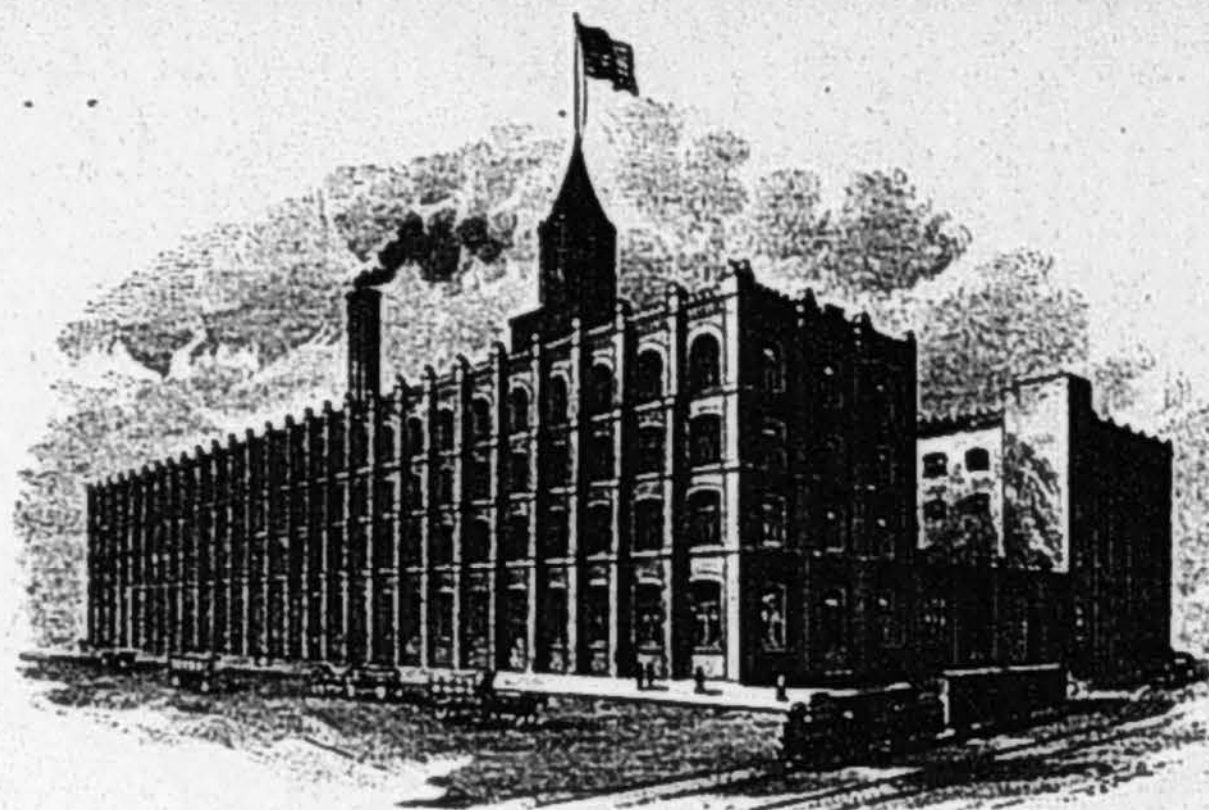
NATIONAL METER COMPANY,

NEW YORK
84 & 86 CHAMBERS ST.
CHICAGO
1223 WABASH AVE.
BOSTON
159 FRANKLIN ST.

DIRECTORS

JOHN C. KELLEY, JR. PRESIDENT.
JOHN L. LAWRENCE, VICE PRESIDENT.
FRANK VINTEN, SECY & TREAS.
LEWIS H. NASH, CHIEF ENGINEER
FRED J. BRADLEY.

CABLE "CROWN" NEW YORK
CODES
A. S. C. 4TH & 5TH EDITIONS
WESTERN UNION
LIEBERS



NEW YORK

PITTSBURG
4 SMITHFIELD ST.
SAN FRANCISCO
141 NEW MONTGOMERY ST.
CINCINNATI
224 EAST FOURTH ST.
ATLANTA
THIRD NATL BANK BLDG.

MANUFACTURERS OF
CROWN, EMPIRE,
NASH, GEM & PREMIER
WATER METERS
NASH GAS ENGINES.

Sept 11th, 1916

Mr. F. M. Faude,

% Cuyamaca Water Company,

San Diego, Cal.

Dear Sir:-

Your favor of Sept 5th., to hand.

We enclose you a circular dated March 1st, 1908, illustrating the AAX Gem parts, and also a circular dated March 1st, 1912, illustrating the Type 9 Nash Meter parts. If you will please order the parts that you require by the names and numbers we will furnish them to you at the lowest net cash prices F O B New York. We cannot give you any price list as all prices are subject to change without notice. We will however, give you the benefit of the lowest prices prevailing at the time you place your order.

Yours very truly,

NATIONAL METER COMPANY

John C. Kelley, Jr.
President

September 18, 1916

The National Meter Co.,
8486 Chamber St.,
New York, N. Y.

Gentlemen:-

We have your letter of September 11th enclosing circular illustrating repair parts for AAX Gem meters and also for Type 9 Nash meters. We also note that you can not give us any price list for repair parts as prices are subject to change without notice.

Our object in asking for price list was not in any way to bind you people to any specific prices for these repairs parts, but simply so that we could make up a price list for use in distribution of our repair costs. You can see that under these conditions it is not necessary for us to have anything closer than approximate prices.

Can you ~~not~~ send us a price list of repair parts giving current prices to be used exclusively for the purpose indicated above. Will you also please send us another copy of the circulars which you enclosed with your favor of September 11th.

In reply please address F M Faude and not the Company.

Yours very truly,

Assistant Manager.

FMF:K

ESTABLISHED 1870.

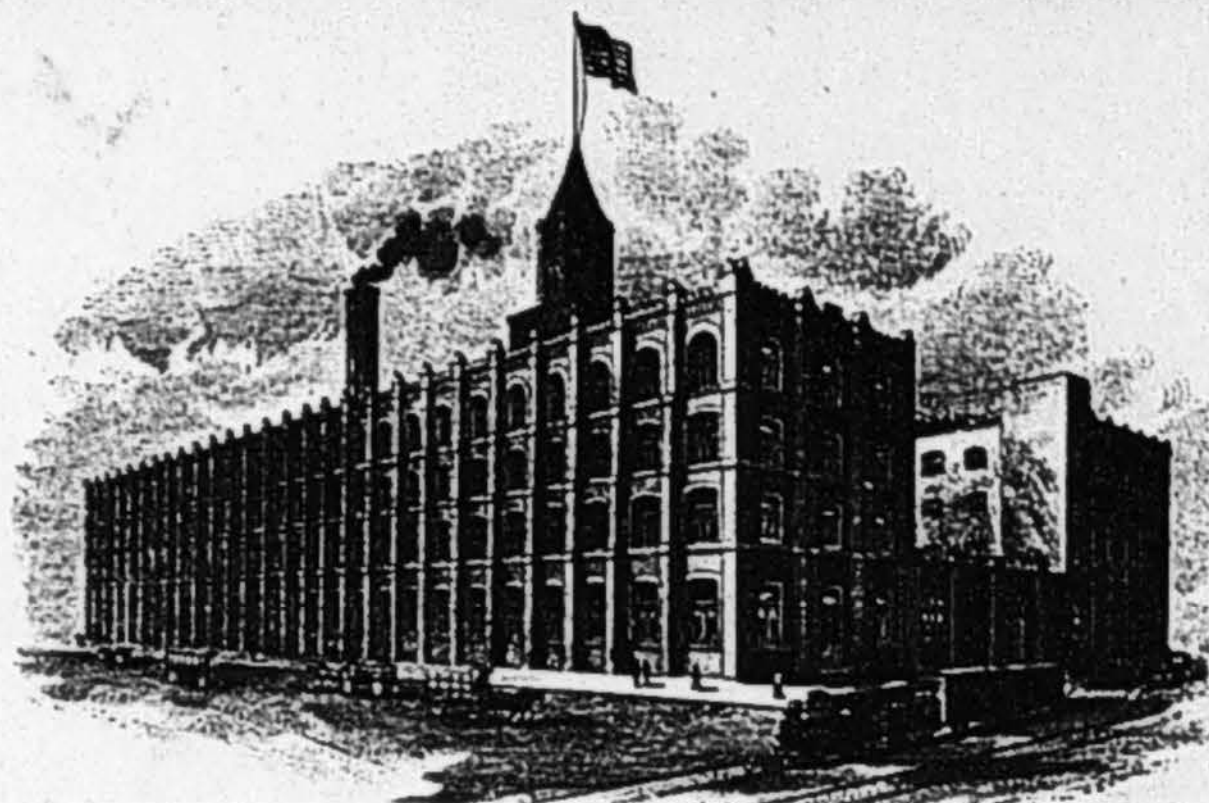
NATIONAL METER COMPANY,

NEW YORK
2486 CHAMBERS ST.
CHICAGO
1223 WABASH AVE.
BOSTON
139 FRANKLIN ST.

DIRECTORS

JOHN C. KELLEY, JR. PRESIDENT.
JOHN L. LAWRENCE, Vice President.
FRANK VINTEN, Secy & Treas.
LEWIS H. NASH, Chief Engineer
FRED. J. BRADLEY.

CABLE "CROWN" NEW YORK
CODES
A.B.C. 4th & 5th EDITIONS
WESTERN UNION
LIEBERS



PITTSBURG
4 SMITHFIELD ST.
SAN FRANCISCO
141 NEW MONTGOMERY ST.
CINCINNATI
224 EAST FOURTH ST.
ATLANTA
THIRD NAT'L BANK BLD'G.

MANUFACTURERS OF
CROWN, EMPIRE,
NASH, GEM & PREMIER
WATER METERS
NASH GAS ENGINES.

NEW YORK

Sept 26th, 1916

Mr. F. M. Faude,
916- Eighth Street,
San Diego, Cal.

Dear Sir:-

Your favor of Sept 18th., to hand.

We enclose you duplicate copies of the circulars which we sent you in our letter of Sept 11th., illustrating the Type 9 Nash Meters, and also the AAX Gem Meters. We cannot give you the prices of the parts just at the moment. The market is simply demoralized. However, if you order any parts they will be furnished at the lowest prices prevailing at the time you place the order. It is possible that we may be able to give you a price list of parts about the first of the new year. It may interest you to know that the prices of some steel bolts which we use have advanced nearly 300 percent. In fact we are really between the devil and the deep blue sea. It is impossible to obtain some material at any price.

Thanking you for your inquiry, we remain,

Yours very truly,

NATIONAL METER COMPANY

John C. Kelley, Jr.
President

107

TELEPHONE BUTTER 1956

ESTABLISHED 1870.

NATIONAL METER COMPANY

MANUFACTURERS OF

WATER METERS

141 NEW MONTGOMERY STREET

SAN FRANCISCO

September 2, 1920

MAIN OFFICE
NEW YORK
JOHN C. KELLEY, JR.
PRESIDENT.

CHICAGO, BOSTON,
PITTSBURGH, CINCINNATI,
ATLANTA, WINNIPEG,
LONDON, ENG.

Ed. Fletcher Company,
Fletcher Building,
San Diego, Calif.

Gentlemen:-

Attention
Mr. T. H. King, Chief Engineer

Replying to your favor of the 25th. ulto., regarding possible delivery of the 18" Premier Meter, beg to say that we have asked our Mr. J. W. Baker who now represents us in Los Angeles, to look into this matter immediately and see if the meter has been forwarded, from San Pedro to San Diego.

We have no doubt that the meter was on the S.S. Hawarden, which docked at San Pedro on August 19th. The only question that might arise, we think, is regarding the forwarding of the meter from San Pedro. Mr. Baker will follow the matter up.

We hope that the meter will prove as satisfactory as every other single one has proven, that we have sold on this coast.

Mr. Baker's office is at 1125 Central Building. J. W. Baker.

The telephone is 67985.

The writer hopes to make a trip south after awhile, and I will take the pleasure of calling on you.

Yours very truly,

NATIONAL METER COMPANY.

George H. Bailey
Pacific Coast Manager.

GHB:MG

Ed Fletcher Papers

1870-1955

MSS.81

Box: 20 Folder: 2

General Correspondence - National Meter Company



Copyright: UC Regents

Use: This work is available from the UC San Diego Libraries. This digital copy of the work is intended to support research, teaching, and private study.

Constraints: This work is protected by the U.S. Copyright Law (Title 17, U.S.C.). Use of this work beyond that allowed by "fair use" requires written permission of the UC Regents. Permission may be obtained from the UC San Diego Libraries department having custody of the work (<http://libraries.ucsd.edu/collections/mscl/>). Responsibility for obtaining permissions and any use and distribution of this work rests exclusively with the user and not the UC San Diego Libraries.