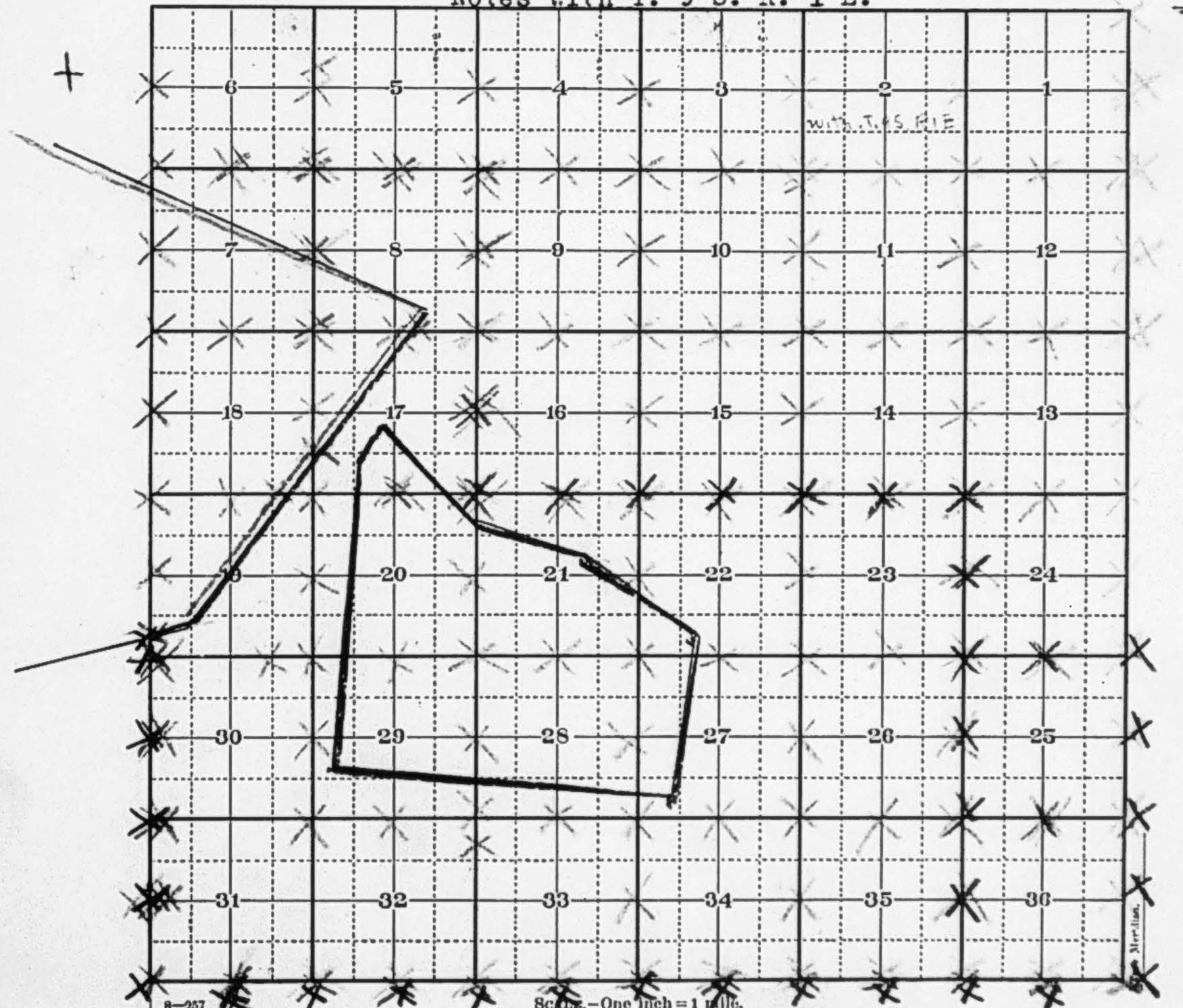


FIELD NOTES  
of  
T. 10 S. R. 1 E. S.B.M.

Form 974.

T. 10 S. R. 1 E. S.B.M. *Mer.*  
Notes with T. 9 S. R. 1 E.



Freeman 1853
Pascoe 1868
Glass 1893  
Washburn 1857
Hanson 1884
Notes of Bds. of Ranchos  
Matthewson 1855
Minto 1885
under separate cover.



South bet. secs. 1 and 6.

Va. 12° 35' E.

- 24.07 Witness cor. to Tps. 9 and 10 S., from which a  
 Black oak 24 in. dia. brs. S. 62½° E. 115 lks.  
 Fir 36 in. dia. brs. N. 55° E. 135 lks.  
 Black oak 18 in. dia. brs. S. 50° W. 96 lks.  
 Black oak 14 in. dia. brs. N. 46° W. 142 lks.
- 24.50 Timber trail from summit of spur course W. & E.
- 27.00 Pala Mission brs. nearly N. 80° W. about 5 miles dist.  
 A place thought to be San Luis Rey brs. S. 71½° W.  
 Commence descending spur course W.
- 40.00 Set 1/4 sec. post, from which a  
 Black oak 20 in. dia. brs. N. 70° W. 68 lks.  
 Black oak 24 in. dia. brs. S. 55° E. 5 lks.
- 43.75 Offset W. 150 lks. base, whence flag S. of gulch brs. S. 32° E.  
 240 lks. dist.
- 46.15 Over gulch and enter fir timber.
- 65.00 Top of spur course W. Leave timber. Pala Mission brs. N. 74½° W.  
 is in valley of San Luis Rey river,  
 Begin to descend spur.
- 80.00 Set post, cor. of secs. 1, 6, 7 and 12, from which a  
 Live oak 14 ins. dia. brs. N. 68° E. 476 lks.  
 Made mound of rock.  
 San Luis Rey brs. S. 74½° W.  
 Indian rancho brs. S. 35° E.  
 This mile extends over mountain spurs and ravines which extend W.  
 from the mountains to San Luis river valley.  
 The N. 24 chs. of S. 1/2 is timber with fir, suitable for lumber.  
 S. slope barren, 3d rate.

South bet. secs. 7 and 12.

Va. 12° 45' E.

- 40.00 Set 1/4 sec. post, from which a  
 Black oak 18 in. dia. brs. N. 25° W. 200 lks.  
 Made small mound of rock.  
 Thence descend mountains and offset from the cor. of the line W.  
 13 chs. base, whence a flag at 1/4 sec. post brs. N. 17° E.  
 Lat. 42.01 lks. measured N. 201 lks. and at
- 80.00 Set post cor. of secs. 12, 13, 7 and 18, from which a  
 Black oak brs. S. 50° W. 116 lks.  
 Black oak 18 in. dia. brs. N. 60° W. 238 lks.  
 Made trench as per inst.  
 Angle of elevation to 1/4 sec. post 21°  
 This mile is a barren mountain, slopes S.  
 Soil, sandy and stony, 5d rate.

November 28, 1853  
-----

South bet. secs. 15 and 18.

Va. 12° 30' E.

- 3.86 A perpendicular gulch 80 ft. deep.  
 A stream 10 lks. wide, runs in gulch SW. On S. side from point  
 in line E. 2 chs. base, whence flag in line brs. N. 19½° W.  
 Lat. 5.66 chs.
- 9.52 Over gulch.
- 40.00 Set 1/4 sec. post, from which a  
 White oak 14 in. dia. brs. N. 1° E. 202 lks.  
 White oak 16 in. dia. brs. S. 34° W. 330 lks.
- 58.00 A stream 10 lks. wide, course NW.
- 59.50 Trail from San Ysabel to Pala Mission, course NW.



62.71 Offset E. 350 lks. base and set flag.  
64.50 Creek 8 lks. wide course NW. banks high.  
From point in line S. of creek and at base of mountain said flag  
brs. N.  $25\frac{3}{4}^{\circ}$  E. dist. 725 lks.  
69.96 Over ravine and creek.  
80.00 Set post cor. of secs. 13, 18, 19 and 24, from which a  
White oak 12 in. dia. brs. N.  $77^{\circ}$  E. 42 lks.  
Black oak 10 in. dia. brs. S.  $65^{\circ}$  E. 49 lks.  
White oak 12 in. dia. brs. S.  $72\frac{1}{2}^{\circ}$  W. 157 lks.  
White oak 12 in. dia. brs. N.  $72^{\circ}$  W. 125 lks.  
Land broken, 3d rate, sandy and stony.  
The streams are tributaries of San Luis Rey river.  
Indian ranch brs. E.

-----  
South bet. secs. 19 and 24.

Va.  $11^{\circ} 30'$  E.

27'00 Ascend to top of a round mountain.  
40.00 Set 1/4 sec. post, from which a  
Black oak 8 in. dia. brs. N.  $44^{\circ}$  W. 92 lks.  
White oak 16 in. dia. brs. S.  $1^{\circ}$  E. 382 lks.  
80.00 Set post cor. of secs. 24, 25, 19 and 30, from which a  
Black oak 12 in. dia. brs. N.  $35^{\circ}$  W. 294 lks.  
Made trench as per inst.  
Soil sandy and stony 3d rate. Broken and mountainous.  
Some greasewood and wild sage, few oak trees.  
Some prairie and table land brs. S.  $44^{\circ}$  W. about 5 miles dist.

November 24, 1853  
-----

South bet. secs. 25 and 30.

Va.  $12^{\circ} 30'$  E.

40.00 Set 1/4 sec. post, made mound of earth and rock with trench.  
80.00 Set post, cor. of secs. 30, 31, 25 and 36, from which a  
White oak 12 in. dia. brs. S.  $7^{\circ}$  W. 432 lks.  
Made mound of rock.  
Land barren, sandy and stony, 3d rate.  
White quartz scattered about the surface.

-----  
South bet. secs. 31 and 36.

Va.  $12^{\circ}$  E.

4.50 A stream 8 lks. wide course SW.  
21.50 Indian trail course W. Base of mountain and enter valley of creek  
course W.  
40.00 Set 1/4 sec. post, from which an  
Aspen 12 in. dia. brs. N.  $52\frac{1}{2}^{\circ}$  W. 428 lks.  
Aspen 12 in. dia. brs. N.  $49^{\circ}$  W. 537 lks.  
Made trench at N. base of mountain.  
44.50 A stream 18 lks. wide course W., rapid current and sandy bed.  
At 44.00 chs. offset W., 42.70 chs. base, set flag.  
From a point on line S. on summit of mountain, flag brs. S.  $19^{\circ} 10' W$   
dist. 122.84 chs. 6.84 chs. S. of true cor. made a witness cor. for  
secs. 1, 6, 7 and 12.  
Set post and raised mound of rock 5 ft. high and 6 ft. base.  
Angle of depression to 1/4 sec. post near base of mountains  $19^{\circ}$ .  
This mountain, 3d rate soil. Growth of greasewood and sage.

November 26, 1853

Vol. 250-3

JAMES E. FREEMAN.  
-----



Commenced June 7, at the cor. of Ts. 9, 10 S. Rs. 1, 2, E. and ran South on E.B. of T. 10 S. R. 1 E.

Va. 13° 30' E.

1st Mile - South bet. secs. 1, 6.

40.00 Set 1/4 sec. post in md. of earth with trench, &c. as per inst.  
 42.00 Cross creek, water 5 lks. wide, 5 ins. deep, runs SE.  
 80.00 Set sec. post, cor. secs. 1, 6, 7, 12, in md. of rock as per inst.  
 Rugged, rocky, brushy and mountainous.

-----  
 2nd Mile - South bet. secs. 7, 12.

40.00 Set 1/4 sec. post in md. of earth with trench, &c. as per inst.  
 43.00 Enter valley slopes SE.  
 70.00 Leave valley and enter mountains.  
 80.00 Established cor. secs. 7, 12, 13, 18 on a black oak 20 ins. in dia.  
 Valley land 1st rate, remainder worthless.

-----  
 3d Mile - South bet. secs. 13 and 18.

40.00 Set 1/4 sec. post in md. with trench &c. from which a  
 Black oak 20 ins. brs. S. 87° W. 40 lks.  
 80.00 Set sec. post cor. secs. 13, 18, 19, 24, in md. of earth &c.,  
 from which a  
 Black oak 28 ins. brs. S. 85° W. 45 lks.  
 Mountainous land with good oak and pine timber, slopes E.

-----  
 4th Mile - South bet. secs. 19 and 24.

40.00 Set 1/4 sec. post in md. of earth with trench &c. as per inst.  
 80.00 Set sec. post cor. secs. 19, 24, 25, 30, from which a  
 Black oak 50 in. brs. N. 10° E. 55 lks.  
 Black oak 36 in. brs. S. 80° E. 150 lks.

Black oak 50 in. brs. N. 85° W. 75 lks.

Black oak 6 in. brs. S. 30° W. 60 lks.

1st rate rolling table land, with good water and well timbered, slopes E.

-----  
 5th Mile - South bet. secs. 25, 30.

2.00 Commenced to descend abrupt mountain N. of San Luis Rey river.  
 40.00 Set 1/4 sec. post in md. of earth with trench &c. as per inst.  
 80.00 Set sec. post, cor. secs. 25, 30, 31, 36, in md. of earth with trench and pits near foot of mountain N. of San Luis Rey river.  
 Descend 1200 ft.

-----  
 6th Mile - South bet. secs. 31 and 36.

10.00 Cross San Luis Rey river 50 lks. wide runs NW., water shallow, quick-sand bed.  
 22.00 Cross trail from Warner's ranch to Palo Mission on ascending ground on S. side of San Luis Rey river.  
 40.00 Set 1/4 sec. post in md. of earth with trench &c. as per inst.  
 80.00 Established cor. Ts. 10, 11 S. Rs. 1, 2, E. on a white oak 16 ins. in dia.  
 Land mountainous with scattered oak timber.

June 7, 1855.

Thence ran

---



West on S.B. of T. 10 S. R. 1 E. Random line.

Va. 13° 30' E.

Ran W. 5 miles, setting temp. 1/4 sec. and sec. post, and finding it impracticable to proceed any further on account of the rough mountains and steep gulches which prevented cor. Ts. 10, 11 S. Rs. 1 E. 1 W. from being established on the Meridian.

Set sec. post, cor. secs. 5, 6, 31, 32, permanently in md. of rock as per inst.

Thence ran.

East on S.B. of T. 10 S. R. 1 E. True line.

Va. 13° 30' E.

2nd Mile - East bet. secs. 5, 32.

40.00 Set 1/4 sec. post in md. of rock as per inst.

80.00 Set sec. post. cor. secs. 32, 33, 4, 5, in md. of earth with trench and pits as per inst.

Rough, rocky, brushy and broken mountain, slopes N. to San Luis Rey river.

3d Mile - East bet. secs. 4, 33.

40.00 Set 1/4 sec. post in md. of rock as per inst.

80.00 Set sec. post, cor. secs. 3, 4, 33, 34, in md. of earth on mountain side sloping N. to the San Luis River,

Rough and rocky.

4th Mile - East bet. secs. 3, 34.

40.00 Set 1/4 sec. post in md. of earth with trench, &c. as per inst.

80.00 Set sec. post, cor. secs. 2, 3, 34, 35, in md. of earth with trench and pits as per inst.

Same as last mile.

5th Mile - East bet. secs. 2, 35.

40.00 Set 1/4 sec. post in md. of earth with trench, &c. as per inst.

80.00 Set sec. post cor. secs. 1, 2, 35 and 36, in md. of rock as per inst.

Same as last mile.

6th Mile - East bet. secs. 1, 36.

40.00 Set 1/4 sec. post in md. of earth with trench, &c. as per inst.

80.00 To cor. Ts. 10, 11 S. Rs. 1, 2, E.

Same as last mile.

June 8, 1855

R. C. MATHERSON.

Vol. 173-14

Commenced at cor. secs. 35, 36, T. 10 S. R. 1 E. and run North bet. secs. 35 and 36.

Va. 13° 35' E.

40.00 Drove charred stake for 1/4 sec. cor. and raised mound of stone as per inst.

50.00 Leave brushy hills.

79.00 Trail course NW. & SE.

80.00 Drove charred stake, cor. secs. 25, 26, 35 and 36, and raised mound of stone as per inst.

Land rolling, good grass, oak brush and 2nd rate soil.



East on random line bet. secs. 25 and 36.

Va. 13° 35' E.

40.00 Set a post for temp. 1/4 sec. cor.

80.16 Int. E.B. 6 lks. S of cor. secs. 25 and 36, from which cor. I run  
West on a true line bet. secs. 25 and 36.

Va. 13° 38' E.

34.00 Stream of water 20 lks. wide course NW.

40.08 Drove charred stake for 1/4 sec. cor. and raised mound of stone  
as per inst.

80.16 To cor. to secs. 25, 26, 35 and 36.

Land rolling, good grass, oak brush and 2nd rate soil.  
-----

North bet. secs. 25 and 26.

Va. 13° 35' E.

15.00 Stream of water 25 lks. wide course W.

40.00 Drove charred stake for 1/4 sec. cor. and raised mound of stone  
as per inst., foot of hills.

80.00 Drove charred stake, cor. secs. 23, 24, 25 and 26, and raised mound  
of stone as per inst.

Oak and pine timber, oak brush, good grass and 2nd rate soil.  
-----

East on random line bet. secs. 24 and 25.

Va. 13° 35' E.

40.00 Set a post for temp. 1/4 sec. cor.

80.11 Int. E.B. 7 lks. N. of cor. secs. 24 and 25.

West on true line bet. secs. 24 and 25.

Va. 13° 32' E.

40.05 Drove charred stake for 1/4 sec. cor. and raised mound of stone  
as per inst.

80.11 To cor. to secs. 23, 24, 25 and 26.

Land rolling, oak and cedar timber, oak brush and 2nd rate soil.  
-----

North bet. secs. 23 and 24.

Va. 13° 35' E.

30.00 Summit hills, enter table land.

40.00 Drove charred stake for 1/4 sec. cor. and raised mound of earth  
with pits and trench as per inst.

80.00 Drove charred stake cor. secs. 13, 14, 23 and 24, and raised mound  
of earth with pits and trench as per inst.

Land rolling, good grass and 1st rate soil.  
-----

East on random line bet. secs. 13 and 24.

Va. 13° 35' E.

40.00 Set a post for temp. 1/4 sec. cor.

80.06 Int. E.B. 9 lks. N. of cor. to secs. 13 and 24, from which cor. I run  
West on a true line bet. secs. 13 and 24.

Va. 13° 31' E.

40.03 Drove charred stake for 1/4 sec. cor. and raised mound of stone  
as per inst.

80.06 To cor. to secs. 13, 14, 23 and 24.

Land mostly rolling, good grass and 1st rate soil.  
-----

North bet. secs. 13 and 14.

Va. 13° 35' E.

40.00 Drove charred stake for 1/4 sec. cor. and raised mound of earth  
with pits and trench as per inst.

80.00 Drove charred stake, cor. secs. 11, 12, 13 and 14, and raised mound  
of earth with pits and trench as per inst.



Land mostly level, fir and cedar timber and 2nd rate soil.

-----

East on random line bet. secs. 12 and 13.

Va. 13° 35' E.

40.00 Set a post for temp. 1/4 sec. cor.

80.09 Int. E.B. 4 lks. N. of cor. secs. 12, 13, from which cor. I run

West on a true line bet. secs. 12 and 13.

Va. 13° 33' E.

40.04 Drove charred stake for 1/4 sec. cor. and raised mound of earth with trench and pits as per inst.

80.09 To cor. secs. 11, 12, 13 and 14.

Land mostly level, good grass and 1st rate soil.

-----

North on random line bet. secs. 11 and 12.

Va. 13° 35' E.

40.00 Set a post for temp. 1/4 sec. cor.

80.11 Int. mound made by R. C. Mathewson, 10 lks. E. of cor. secs. 1, 2,

11, 12, from which cor. I run

South on a true line bet. secs. 11 and 12.

Va. 13° 39' E.

40.05 Drove charred stake for 1/4 sec. cor. and raised mound of stone as per inst.

80.11 To cor. secs. 11, 12, 13 and 14.

Land rolling and 2nd rate soil.

-----

East on random line bet. secs. 1 and 12.

Va. 13° 35' E.

40.00 Set a post for temp. 1/4 sec. cor.

79.92 Int. E.B. 5 lks. N. of cor. secs. 1 and 12, from which cor. I run

West on a true line bet. secs. 1 and 12.

Va. 13° 33' E.

39.96 Drove charred stake for 1/4 sec. cor. and raised mound of stone as per inst.

79.92 To cor. secs. 1, 2, 11 and 12.

Land same as last.

-----

North bet. secs. 34 and 35.

Va. 13° 35' E.

40.00 Drove charred stake for 1/4 sec. cor. and raised mound of stone as per inst.

45.00 Leave brushy hills.

65.50 Stream of water 22 lks. wide course W.

80.00 Drove charred stake, cor. secs. 26, 27, 34 and 35, and raised mound of stone as per inst.

Land 35 chs. table land, oak timber, good grass and 1st rate soil.

February 20, 1857

-----

East on random line bet. secs. 26 and 35.

Va. 13° 35' E.

40.00 Set a post for temp. 1/4 sec. cor.

79.90 Int. N. & S. line 8 lks. N. of cor. secs. 25, 26, 35 and 36, from which cor. I run

West on a true line bet. secs. 26 and 35.

Va. 13° 32' E.

3.00 Trail course NW. & SE.

39.95 Drove charred stake for 1/4 sec. cor. and raised mound of stone as per inst.

56.50 Stream of water 18 lks. wide course SW. Leave hills.



79.90 To cor. secs. 26, 27, 34 and 35.  
Land same as last.

-----

North bet. secs. 26 and 27.

Va. 15° 35' E.

40.00 Drove charred stake for 1/4 sec. cor. and raised mound of stone  
as per inst.

56.00 Trail course NW. & SE.

80.00 Drove charred stake, cor. secs. 22, 23, 26 and 27, and raised mound  
of earth with pits and trench as per inst.  
Table land, good grass and 1st rate soil.

-----

East on random line bet. secs. 23 and 26.

Va. 15° 35' E.

40.00 Set a post for temp. 1/4 sec. cor.

80.07 Int. N. & S. line 11 lks. N. of cor. secs. 23, 24, 25 and 26,  
from which cor. I run  
West on a true line bet. secs. 23 and 26.

Va. 13° 30' E.

30.00 Stream of water 6 lks. wide course S. Leave hills.

40.03 Drove charred stake for 1/4 sec. cor. and raised mound of stone  
as per inst.

80.07 To cor. to secs. 22, 23, 26 and 27.  
Land 50 chs. table land and 1st rate soil.  
Ioya Rancharia brs. S. 21° 30' W.

-----

North bet. secs. 22 and 23.

Va. 13° 35' E.

40.00 Drove charred stake for 1/4 sec. cor. and raised mound of stone  
as per inst.

48.00 Enter brushy hills.

80.00 Drove charred stake, cor. secs. 14, 15, 22 and 23, and raised a  
mound of stone as per inst.  
Land rolling, oak brush and 2nd rate soil.

-----

East on a random line bet. secs. 14 and 23.

Va. 13° 35' E.

40.00 Set a post for temp. 1/4 sec. cor.

79.86 Int. N. & S. line 6 lks. S. of cor. secs. 13, 14, 23 and 24,  
from which cor. + run  
West on a true line bet. secs. 14 and 23.

Va. 13° 38' E.

39.93 Drove charred stake for 1/4 sec. cor. and raised mound of stone  
as per inst.

79.86 To cor. secs. 14, 15, 22 and 23.  
Land rolling and 2nd rate soil.

-----

North bet. secs. 14 and 15.

Va. 13° 35' E.

40.00 Drove charred stake for 1/4 sec. cor. and raised mound of earth  
with pits and trench as per inst.

60.00 Summit hills.

80.00 Drove charred stake, cor. secs. 10, 11, 14 and 15, and raised mound  
of earth with pits and trench as per inst., from which a  
Red oak 20 in. dia. brs. S. 40° W. 17 lks. dist.  
Red oak 45 in. dia. brs. N. 20° E. 20 lks. dist.  
Land rolling, oak and fir timber and good 2nd rate soil.

-----



East on random line bet. secs. 11 and 14.

Va. 13° 35' E.

40.00 Set a post for temp. 1/4 sec. cor.

80.11 Ont. N. & S. line 10 lks. N. of cor. secs. 11, 12, 13 and 14,  
from which cor. 1 run

West on true line bet. secs. 11 and 14.

Va. 13° 31' E.

40.05 Drove charred stake for 1/4 sec. cor. and raised mound of earth  
with pits and trench as per inst.

80.11 To cor. secs. 10, 11, 14 and 15.

Table land, oak and pine timber, good grass and 1st rate soil.

North on random line bet. secs. 10 and 11.

Va. 13° 35' E.

40.00 Set a post for temp. 1/4 sec. cor.

79.96 Int. mound made by R. C. Mathewson, 4 lks. W. of cor. secs. 2, 5, 10, 11  
from which cor. 1 run

South on a true line bet. secs. 10 and 11.

Va. 13° 33' E.

39.98 Drove charred stake for 1/4 sec. cor. and raised mound of earth with  
pits and trench as per inst.

79.96 To cor. secs. 10, 11, 14 and 15.

Land rolling, good grass, pine and cedar, timber and 1st rate soil

North bet. secs. 33 and 34.

Va. 13° 35' E.

40.00 Drove charred stake for 1/4 sec. cor. and raised mound of stone as  
per inst.

65.60 Leave brushy hills.

80.00 Drove charred stake cor. secs. 27, 28, 33 and 34, and raised mound  
of stone as per inst.

Land rolling and 2nd rate soil.

East on random line bet. secs. 27 and 34.

Va. 13° 35' E.

40.00 Set a post for temp. 1/4 sec. cor.

80.10 Int. N. & S. line 7 lks. N. of cor. secs. 26, 27, 34, 35,  
from which cor. 1 run

West on a true line bet. secs. 27 and 34.

Va. 13° 32' E.

10.00 Enter wheat field.

40.00 Drove charred stake for 1/4 sec. cor. and raised mound of earth with  
pits and trench as per inst.

67.00 Leave wheat field.

75.10 Stream of water 24 lks. wide course N.

80.10 To cor. secs. 27, 28, 33 and 34.

Land level, oak timber and 1st rate soil.

North bet. secs. 27 and 28.

Va. 13° 35' E.

2.75 Stream of water 25 lks. wide course SW.

15.00 Enter wheat field.

32.50 Running water, 5 lks. wide course SW. Leave wheat field.

40.00 Drove charred stake for 1/4 sec. cor. and raised mound of stone as  
per inst.

80.00 Drove charred stake, cor. secs. 21, 22, 27 and 28, and raised mound  
of stone as per inst., from which a



Live oak 18 in. dia. brs. N. 58°30' W. 29 lks. dist.

Live oak 12 in. dia. brs. S. 13°30' W. 48 lks. dist.

Picha Rancharia brs. N. 51°30' W. about 10 chs.

Land rolling, oak timber, good grass and 1st rate soil.

February 21, 1857

East on random line bet. secs. 22 and 27.

Va. 15° 35' E.

40.00 Set a post for temp. 1/4 sec. cor.

79.88 Int. N. & S. line 11 lks. N. of cor. to secs. 22, 23, 26 and 27, from which cor. I run

West on a true line bet. secs. 22 and 27.

Va. 15° 50' E.

35.50 Wagon road course NW.

40.00 Drove charred stake for 1/4 sec. cor. and raised mound of earth with trench and pits as per inst.

56.00 Enter barley field.

65.00 Leave the same.

71.00 Running water 7 lks. wide course S.

79.88 To cor. secs. 21, 22, 27 and 28.

Land table and 1st rate soil.

North bet. secs. 21 and 22.

Va. 13° 35' E.

14.00 Wagon road course E. & W. Enter wheat field.

25.00 Leave wheat field.

40.00 Drove charred stake for 1/4 sec. cor. and raised mound of earth with pits and trench as per inst., foot of hills.

80.00 Drove charred stake, cor. secs. 15, 16, 21 and 22, and raised mound of stone as per inst.

Land rolling, oak and pine timber and 2nd rate soil.

East on random line bet. secs. 15 and 22.

Va. 15° 35' E.

40.00 Set a post for temp. 1/4 sec. cor.

80.12 Int. N. & S. line 7 lks. N. of cor. secs. 14, 15, 22 and 23, from which cor. I run

West on a true line bet. secs. 15 and 22.

Va. 13° 32' E.

40.06 Drove charred stake for 1/4 sec. cor. and raised mound of stone as per inst.

80.12 To cor. secs. 15, 16, 21 and 22.

Land rolling, hills pine and cedar timber, wild oaks, 2nd rate soil.

North bet. secs. 15 and 16.

Va. 13° 35' E.

40.00 Drove charred stake for 1/4 sec. cor. and raised mound of stone as per inst.

70.00 Summit of hills.

80.00 Drove charred stake, cor. secs. 9, 10, 15 and 16, raised mound of earth with pits and trench as per inst., from which a

Black oak 20 in. di. brs. S. 21° W. 26 lks. dist.

Land rolling, oak, pine and cedar timber and 1st rate soil.

East on random line bet. secs. 10 and 15.

Va. 13° 35' E.



- 40.00 Set a post for temp. 1/4 sec. cor.
- 79.91 Int. N. & S. line 9 lks. S. of cor. to secs. 10, 11, 14 and 15,  
from which cor.  $\perp$  run  
West on a true line bet. secs. 10 and 15.  
Va. 13° 39' E.
- 39.95 Drove charred stake for 1/4 sec. cor. and raised mound of earth  
with pits and trench as per inst.
- 79.91 To cor. secs. 9, 10, 15 and 16.  
Table land, pine timber and 1st rate soil.
- 
- North bet. secs. 9 and 10.  
Va. 13° 35' E.
- 15.00 Rancheria 2 chs. W. of line.
- 40.00 Drove charred stake for 1/4 sec. cor., from which a  
Black oak 18 in. dia. brs. N. 30° W. 70 lks. dist.  
Black oak 26 in. dia. brs. S. 74° E. 53 lks. dist.
- 80.00 Drove charred stake, cor. secs. 3, 4, 9 and 10, from which a  
Black oak 34 in. di. brs. N. 57° E. 95 lks. dist.  
Black oak 36 in. dia. brs. N. 30° W. 48 lks. dist.  
Black oak 42 in. dia. brs. S. 22° E. 72 lks. dist.  
Black oak 20 in. dia. brs. S. 22° 30' W. 67 lks. dist.  
Land tableland, oak and fir timber, good grass and 1st rate soil.
- 
- East on random line bet. secs. 3 and 10.  
Va. 13° 35' E.
- 40.00 Set a post for temp. 1/4 sec. cor.
- 80.13 Int. N. & S. line 9 lks. N. of cor. secs. 2, 3, 10 and 11,  
from which cor. I run  
West on a true line bet. secs. 3 and 10.

- Va. 13° 31' E.
- 40.06 Drove charred stake for 1/4 sec. cor. and raised mound of earth  
with pits and trench as per inst.
- 80.13 To cor. secs. 3, 4, 9 and 10.  
Land same as last, 1st rate soil.
- 
- North on random line bet. secs. 3 and 4.  
Va. 13° 35' E.
- 40.00 Set a post for temp. 1/4 sec. cor.
- 80.07 Int. N.B. 7 lks. W. of cor. secs. 3 and 4, from which cor. I run  
South on a true line bet. secs. 3 and 4.  
Va. 15° 32' E.
- 30.00 Leave brushy hills, enter table land.
- 40.07 Drove charred stake for 1/4 sec. cor. and raised mound of earth  
with pits and trench as per inst.
- 80.07 To cor. secs. 3, 4, 9 and 10.  
Mostly table land, oak and pine timber, good grass, 1st rate soil.
- 
- West bet. secs. 28 and 33.  
Va. 13° 35' E.
- 5.20 Stream of water, 21 lks. wide course S.
- 40.00 Drove charred stake for 1/4 sec. cor. and raised mound of stone  
as per inst.
- 45.00 Enter wheat field.
- 65.50 Leave wheat field.
- 80.00 Drove charred stake, cor. secs. 28 29, 32 and 33, from which a  
White oak 10 in. dia. brs. N. 59° E. 63 lks. dist.  
White oak 20 in. dia. brs. N. 47° W. 100 lks. dist.



White oak 24 in. dia. brs. S. 29° E. 69 lks. dist.  
Oak timber, table land and 1st rate soil.

-----  
South bet. secs. 32 and 33.

Va. 13° 35' E.

15.00 Stream of water, 26 lks. wide, course W. foot of brushy mountains,  
course E. & W.  
Land rolling, oak timber and 2nd rate soil.

-----  
North bet. secs. 28 and 29.

Va. 13° 35' E.

40.00 Drove charred stake for 1/4 sec. cor. and raised mound of earth with  
trench and pits as per inst.

80.00 Drove charred stake, cor. secs. 20, 21, 28 and 29, and raised mound  
of earth with trench and pits as per inst.  
Land rolling, good grass and 1st rate soil.

-----  
East on random line bet. secs. 21 and 28.

Va. 13° 35' E.

40.00 Set a post for temp. 1/4 sec. cor.

80.10 Int. N& S. line 9 lks. N' of cor. to secs. 21, 22, 27 and 28,  
from which cor. 1 run

West on a true line bet. secs. 21 and 28.

Va. 13°31' E.

40.05 Drove charred stake for 1/4 sec. cor. and raised mound of earth with  
pits and trench as per inst.

41.00 Spring of water.

80.10 To cor. secs. 20, 21, 28 and 29.

Table land and 1st rate soil.

North bet. secs. 20 and 21.

Va. 13° 35' E.

13.00 Wagon road course E. & W.

26.00 Trail course E. & W.

26.50 Sycamore, 24 in. dia. Dry run course SW. 10 lks. Wide.

40.00 Drove charred stake for 1/4 sec. cor., from which a  
White oak 15 in. dia. brs. N' 47°30' E. 59 lks.

White oak 12 in. dia. brs. S. 6° 30' W. 37 lks.

80.00 Drove charred stake, cor. secs. 16, 17, 20 and 21, and raised a  
mound of stone as per inst.

Land mostly level, good grass and 1st rate soil.

-----  
East on random line bet. secs. 16 and 21.

Va. 13° 35' E.

40.00 Set a post for temp. 1/4 sec. cor.

80.06 Int. N. & S. line 10 lks. S. of cor. secs. 15, 16, 21 and 22,  
from which cor. 1 run

West on a true line bet. secs. 16 and 21.

Va. 13° 39' E.

40.03 Drove charred stake for 1/4 sec. cor. and raised mound of stone  
as per inst.

80.06 To cor. secs. 16, 17, 20 and 21.

Land rolling and 1st rate soil.

-----  
North bet. secs. 16 and 17.

Va. 13° 35' E.

20.00 Foot of hills.

26.00 Trail course NE. & SW.



- 40.00 Drove charred stake for 1/4 sec. cor. and raised mound of stone as per inst.
- 80.00 Drove charred stake, cor. secs. 8, 9, 16 and 17 and raised mound of stone as per inst.  
Land rolling, oaks, cedar, and fir timber and 2nd rate soil.
- 
- East on random line bet. secs. 9 and 16.  
Va. 13° 35' E.
- 40.00 Set a post for temp. 1/4 sec. cor.
- 79.89 Int. N. & S. line 6 lks. S. of cor. secs. 9, 10, 15 and 16, from which cor. I run  
West on a true line bet. secs. 9 and 16.  
Va. 13° 58' E.
- 20.00 Trail course N. & S.
- 39.94 Drove charred stake for 1/4 sec. cor. and raised mound of earth with pits and trench as per inst.
- 79.89 To cor. secs. 8, 9, 16 and 17.  
Land rolling and 2nd rate soil.
- 
- North bet. secs. 8 and 9.  
Va. 13° 35' E.
- 18.00 Summit hills, enter table land.
- 40.00 Drove charred stake for 1/4 sec. cor. and raised mound of earth with pits and trench as per inst.
- 80.00 Drove charred stake, cor. secs. 4, 5, 8 and 9, from which  
A Black oak 34 in. dia. brs. N. 42° E. 53 lks. dist.  
A White oak 19 in. dia. brs. N. 61° W. 13 lks. dist.  
A White oak 21 in. dia. brs. S. 27°30' W. 53 lks. dist.

- A White oak 10 in. dia. brs. S. 33° E. 48 lks. dist.  
Land mostly level, oak, pine and cedar timber, good grass and 1st rate soil.
- 
- East on a random line bet. secs. 4 and 9.  
Va. 13° 35' E.
- 40.00 Set a post for temp. 1/4 sec. cor.
- 79.97 Int. N. & S. line 8 lks. N. of cor. secs. 3, 4, 10 and 9, from which cor. I run  
West on a true line bet. secs. 4 and 9.  
Va. 13° 32' E.
- 39.98 Drove charred stake for 1/4 sec. cor., from which a  
Red oak 14 in. dia. brs. S. 72° E. 42 lks. dist.  
Black oak 8 in. dia. brs. N. 781° W. 78 lks. dist.
- 53.00 Running water 6 lks. wide course N.
- 79.97 To cor. secs. 4, 5, 8 and 9.  
Land mostly level, pine timber, and 1st rate soil.
- 
- North on random line bet. secs. 4 and 5.  
Va. 13° 35' E.
- 40.00 Set a post for temp. 1/4 sec. cor.
- 80.13 Int. N.E. 7 lks. E. of cor. secs. 4 and 5, from which cor. I run  
South on a true line bet. secs. 4 and 5.  
Va. 13° 38' E.
- 40.13 Drove charred stake for 1/4 sec. cor. and raised mound of stone as per inst.
- 45.00 Enter table land.
- 80.13 To cor. secs. 4, 5, 8 and 9.  
Land mostly rolling, oak and pine timber, good grass and 1st rate soil.



West bet. secs. 29 and 32.

Va. 13° 35' E.

- 40.00 Drove charred stake for 1/4 sec. cor. and raised mound of stone as per inst.
- 68.00 Foot of brushy hills.
- 80.00 Drove charred stake, cor. secs. 29, 30, 31 and 32, and raised mound of stone as per inst., foot of rough mountains, course NW. & SE. Last 12 chs. rolling and oak brush and good 2nd rate soil.

North bet. secs. 29 and 30.

Va. 13° 35' E.

- 40.00 Drove charred stake for 1/4 sec. cor. and raised mound of stone as per inst.
- 47.00 Trail, course SW. & NE.
- 80.00 Drove charred stake, cor. secs. 19, 20, 29 and 30, and raised mound of earth with pits and trench as per inst. Land rolling, oak brush and 2nd rate soil.

East on random line bet. secs. 20 and 29.

Va. 13° 35' E.

- 40.00 Set a post for temp. 1/4 sec. cor.
- 79 87 Int. N. & S. line 8 lks. N. of cor. secs. 20, 21, 28 and 29, from which cor. I run West on a true line bet. secs. 20 and 29.

Va. 13° 35' E.

- 22.00 Trail course NE. & SW.
- 39.93 Drove charred stake for 1/4 sec. cor. and raised mound of stone as per inst.

- 79.87 To cor. secs. 19, 20, 29 and 30. Land rolling, good grass, oak timber and 1st rate soil.

West bet. secs. 19 and 30.

Va. 13° 35' E.

- 10.00 Running water, 4 lks. wide course SW.
- 25.00 Witness mound of stone as per inst., foot of brushy hills, course NW. & SE. Land rolling and 2nd rate soil.

North bet. secs. 19 and 20.

Va. 15° 35' E.

- 7.00 Running water, 6 lks. wide course SW., enter table land.
- 40.00 Drove charred stake for 1/4 sec. cor. and raised mound of stone as per inst.
- 80.00 Drove charred stake, cor. secs. 17, 18, 19 and 20, and made mound of earth with trench and pits as per inst. Table land, oak timber, and 1st rate soil.

February 24, 1857

East on random line bet. secs. 17 and 20

Va. 13° 35' E.

- 40.00 Set a post for temp. 1/4 sec. cor.
- 80.08 Int. N. & S. line 4 lks. S. of cor. secs. 16, 17, 20 and 21, from which cor. I run West on a true line bet. secs. 17 and 20.

Va. 13° 37' E.

- 15.00 Leave low hills, enter valley.
- 40.04 Drove charred stake for 1/4 sec. cor. and raised mound of earth with



pits and trench as per inst.

- 43.50 Potrero Rancharia.
- 54.70 Leave Rancharia and field.
- 71.00 Wagon road course NW. & SE.
- 80.08 To cor. secs. 17, 18, 19 and 20.  
and level, good grass and 1st rate soil.
- 
- West on random line bet. secs. 18 and 19.  
Va. 13° 35' E.
- 40.00 Set a post for temp. 1/4 sec. cor.
- 80.26 Int. W.B. 10 lks. S. of cor. secs. 18 and 19,  
from which cor. I run  
East on a true line bet. secs. 18 and 19.  
Va. 13° 31' E.
- 32.00 Leave hills, dry run, course NW.
- 40.26 Drove charred stake for 1/4 sec. cor. and raised mound of earth  
with trench and pits as per inst.
- 76.00 Spring of water.
- 80.26 To cor. secs. 17, 18, 19 and 20.  
Land mostly level, good grass, oak timber and 1st rate soil.
- 
- North bet. secs. 17 and 18.  
Va. 13° 35' E.
- 7.00 Wagon road course W.
- 30.00 Running water 4 lks. wide course W., foot of hill.
- 40.00 Drove charred stake for 1/4 sec. cor. and raised mound of stone as  
per inst.
- 80.00 Drove charred stake, cor. secs. 7, 8, 17 and 18 and raised mound of  
stone as per inst.

Rolling hills, wild oats, oak and pine timber and 1st rate soil.

- 
- East on random line bet. secs. 8 and 17.  
Va. 13° 35' E.
- 40.00 Set a post for temp. 1/4 sec. cor.
- 79.93 Int. N. & S. line 11 lks. N. of cor. secs. 8, 9, 17 and 16,  
from which cor. I run  
West on true line bet. secs. 8 and 17.  
Va. 15° 30' E.
- 39.96 Drove charred stake for 1/4 sec. cor. and raised mound of earth  
with pits and trench as per inst.
- 79.93 To cor. secs. 7, 8, 17 and 18.  
Land rolling, wild oats, oak timber, and 1st rate soil.
- 
- West on random line bet. secs. 7 and 18.  
Va. 13° 35' E.
- 40.00 Set a post for temp. 1/4 sec. cor.
- 80.31 Int. W.B. 7 lks. N. of cor. secs. 7 and 18, from which cor. I run  
East on a true line bet. secs. 7 and 18.  
Va. 15° 38' E.
- 10.50 Dry run, course SW. 15 lks. wide.
- 40.31 Drove charred stake for 1/4 sec. cor. and raised mound of stone  
as per inst.
- 80.31 To cor. secs. 7, 8, 17 and 18.  
Land rolling, wild oats, scattering pine timber and 2nd rate soil.
- 
- North bet. secs. 7 and 8.  
Va. 13° 35' E.



32.00 Summit hill, enter table land.

40.00 Drove charred stake for 1/4 sec. cor. and raised mound of earth with trench and pits as per inst.

80.00 Drove charred stake, cor. secs. 5, 6, 7 and 8 and raised mound of earth with trench and pits as per inst.

Last 48 chs. table land, oak and pine timber, good grass and 1st rate soil.

-----  
East on a random line bet. secs. 5 and 8.

Va. 13° 35' E.

40.00 Set a post for temp. 1/4 sec. cor.

80.12 Int. N. & S. line 9 lks. S. of cor. secs. 4, 5, 8 and 9, from which cor. I run

West on a true line bet. secs. 5 and 8.

Va. 15° 39' E.

40 06 Drove charred stake for 1/4 sec. cor. and raised mound of earth with pits and trench as per inst.

80.12 To cor. secs. 5, 6, 7 and 8.

Land mostly level, oak and pine timber, good grass and 1st rate soil.

-----  
West on random line bet. secs. 6 and 7

Va. 13° 35' E.

40.00 Set a post for temp. 1/4 sec. cor.

80.34 Int. W.B. 7 lks. S. of cor. secs. 6, 7, from which cor. I run

East on a true line bet. secs. 6 and 7

Va. 13° 32' E.

40.34 Drove charred stake for 1/4 sec. cor. and raised mound of earth with pits and trench as per inst.

80.34 To cor. secs. 5, 6, 7 and 8.

-----  
Land rolling, wild oats and good 2nd rate soil.

-----  
North bet. secs. 5 and 6.

Va. 13° 35' E.

40.00 Drove charred stake for 1/4 sec. cor. and raised mound of stone as per inst.

45.00 Witness mound of stone as per inst., foot of hills, course E. & W.

Land rolling, oak and cedar timber, good grass and good 2nd rate soil.

February 25, 1857

H. S. WASHBURN.

Vol. 262-11  
-----

-----  
In order to find line of Pauma Rancho,  
From the 1/4 sec. cor. bet. secs. 31, 36, which, finding nearly destroyed, I reestablished same and set a post 3 ft. long 3 in. dia. with marked stone 12 ins. in the ground for 1/4 sec. cor., marked 1/4 S. on W. face, dug pits 18 x 18 x 12 ins. N. & S. of post 5 1/2 ft. dist. and raised a mound of earth 1 1/2 ft. high 3 1/2 ft. base around post, from which brs. an

Aspen 16 in. dia. N. 52 1/2° W. 428 lks. dist.

I run

North on a random line bet. secs. 31 and 36.

Va. 13° 50' E.

Ascend.

21.00 Foot of ridge brs. E. & W. & ascend.



21.65 Cross trail brs. E. & W.  
30.00 Top of ridge brs. NE. & SW. & descend.  
35.70 Cross creek 15 lks. wide course SW. Ascend.  
40.11 The cor. to secs. 25, 30, 31, 36, which finding nearly destroyed, I reestablish same and set a quartz stone 16 x 10 x 10, 11 in. in the ground for cor. to secs. 25, 30, 31, 36, marked with 1 notch on S. and 5 notches on N. edges, and raised a mound of stone alongside, Pits impracticable, from which brs. a  
White oak 15 in. dia. S. 7° W. 453 lks. dist.  
marked T. 10 S. R. 1 W. S. 36 B.T.  
No other trees within limits.

Land mountainous, soil 3d rate.

Timber of oak. Dense undergrowth of chemisal.

-----  
North on a random line bet. secs. 25 and 30.

Va. 13° 30' E.

Ascend.

40.00 To 1/4 sec. cor., which finding nearly destroyed, I reestablished same and set a granite stone 14 x 14 x 9 in. 9 in. in ground for 1/4 sec. cor. marked 1/4 on W. face and raised a mound of stone alongside. Pits impracticable.

80.00 To cor. to secs. 19, 24, 25, 30. of which I can find no trace, except the following bearing tree, viz:

Black oak 14 in. dia. N. 35° W. 294 lks. dist.

marked T. 10 S. R. 1 W. S. 25 B.T.

To remark cor. I

Set a granite stone 15 x 10 x 5 in. 10 in. in the ground for cor. to secs. 19, 24, 25, 30, marked with 2 notches on S. and 4 notches

on N. edges, and raised a mound of stone alongside.

Pits impracticable.

Land mountainous, soil 3d rate.

Timber of oak. Dense undergrowth of chemisal.

-----  
North on a random line bet. secs. 19, 24.

Va. 13° 30' E.

Ascend.

13.60 To small stone mound at intersection of line with bdy. of Pauma Ro. This cor. being in poor order, I destroy it and in its place set a post 4 ft. long 4 ins. sq. 12 ins. in the ground for closing cor. to secs. 19, 24, marked C.C.T. 10 S. on S., R. 1 E. S. 19 on E R. 1 W. S. 24 on W and P. on N. faces, with 6 notches on S. E. & W faces, and raised a mound of stone 2 ft. high 4 1/2 ft. base around post. Pits impracticable.

Land mountainous, soil 3d rate.

Timber of oak. Dense undergrowth of chemisal.

-----  
Notes of RANCHO PAUMA, under this survey, by A. P. HANSON,  
are given under separate cover.  
-----

From the cor. to secs. 4, 5, 8, 9, the locus of which I determine from the following bearing trees, viz:

White oak 14 in. dia. S. 33° E. 48 lks. dist.

marked. T. 10 S. R. 1 E. S. 9 B.T.

White oak 30 in. dia. S. 27 1/2° W. 53 lks. dist.

marked T. 10 S. R. 1 E. S. 8 B.T.



White oak 24 in. dia. N. 61° W. 13 lks. dist.

marked T. 10 S. R. 1 E. S. 5 B.T.

and to re-establish which, I set a post 4 ft. long 4 ins. sq. with marked stone 12 ins. in the ground marked T. 10 S. S. 4 on NE., R. 1 E. S. 9 on SE., S. 8 on SW. and S. 5 on NW. faces, with pits 18 x 18 x 12 in. in each sec. 5½ ft. dist. and raised a mound of earth 2 ft. high 4½ ft. base around post.

I run

WEST on a random line bet. secs. 5 and 8.

Va. 13° 30' E.

40.00 Found no trace of old 1/4 sec. cor. Set temp. 1/4 sec. cor.

80.12 Found no trace of old cor. to secs. 5, 6, 7, 8

Set temp. sec. cor.

Thence I run

WEST on a random line bet. secs. 6 and 7.

Va. 13° 30' E.

40.00 Found no trace of old 1/4 sec. cor., set temp. 1/4 sec. cor.

80.66 To a point 32 lks. N. of cor. to secs. 1, 6, 7, 12, on W.B. of Tp.

Thence I run

N. 89° 46' E. on a true line bet. secs. 6 and 7.

Va. 13° 20' E.

Over rolling land.

40.66 Set a post 3 ft. long 3 ins. sq. with qt. of charcoal, 12 ins. in the ground for 1/4 sec. cor., marked 1/4 S. on N. face; dug pits 18 x 18 x 12 ins. E. & W. of post 5½ ft. dist. and raised a mound of earth 1½ ft. high 3½ ft. base around post.

80.66 Set a granite stone 18 x 11 x 8 ins. 12 ins. in the ground for cor. to secs. 5, 6, 7, 8, marked with 5 notches on S. & E. edges and raised a mound of stone alongside. Pits impracticable.

Land rolling, soil 3d rate.

Dense undergrowth of chemisal.

East on a true line bet. secs. 5 and 8.

Vs. 13° 30' E.

Over rolling land.

40.06 Set a post 3 ft. long 3 ins. sq. 12 ins. in the ground for 1/4 sec cor. marked 1/4 S. on N. face, from which hrs. a

White oak 16 in. dia. N. 19° E. 206 lks. dist.

marked 1/4 S.B.T.

No other tree within limits; dug pits 18 x 18 x 12 ins. W. of post 5½ ft. dist. and raised a mound of earth 1½ ft. high 3½ ft. base around post.

80.12 The cor. to secs. 4, 5, 8 and 9.

Land rolling, soil 3d rate.

Timber of oak and dense undergrowth of chemisal.

February 22, 1884

From the cor. to secs. 5, 6, 7, 8, I run

South on a random line bet. secs. 7 and 8.

Va. 13° 30' E.

40.00 Found no trace of old 1/4 sec. cor. Set temp. 1/4 sec. cor.

45.81 Int. NE. bdy. of Pauma Rancho at point 10.00 chs. S. 63° 43' E. from post P. 80.00 chs. and finding no trace of closing cor. to secs. 7 and 8, set a post 4 ft. long 4 ins. sq. with marked stone 12 ins. in the ground for closing cor. to secs. 7 and 8, marked C.C.T. 10 S. R. 1 E. on N., S. 8 on E. and S. 7 on W. faces with 5 notches on E. and 1 notch on W. faces, and raised a mound of stone and earth around post.



Thence I run

North on a true line bet. secs. 7, 8.

Va. 13° 30' E.

Ascend.

5.81 Set a granite stone 16 x 10 x 19 ins. 11 ins. in the ground for 1/4 sec. cor., marked 1/4 S. on W. face and raised a stone mound alongside. Pits impracticable.

45.81 The cor. to secs. 5, 6, 7, 8.

Land hilly, soil 3d rate.

Dense undergrowth of chemisal.

RETRACING.

From the cor. to secs. 4, 5, 8, 9, I run

South on a random line bet. secs. 8, 9.

Va. 13° 50' E.

Over rolling land.

40.00 After diligent search, being unable to find old cor., I set a post 3 ft. long 3 ins. sq. with marked stone 12 in. in the ground for 1/4 sec. cor., marked 1/4 S. on W. face, from which brs. a

White oak 28 ins. dia. S. 17° W. 196 lbs. dist.

marked 1/4 S.B.T.

No other tree within limits, dug a pit 18 x 18 x 12, N. of post 5 1/2 ft. dist. and raised a mound of earth 1 1/2 ft. high 3 1/2 ft. base around post.

65.00 Top of hill brs. E. & W. & descend.

80.00 After diligent search, being unable to find old sec. cor., I set a post 4 ft. long 4 ins. sq. with marked stone 12 ins. in the ground for cor. to secs. 8, 9, 16, 17, marked T. 10 S. S. 9 on NE., R. 1 E. S. 16 on SE., S. 17 on SW. and S. 8 on NW. faces,

Retracing

with 4 notches on S. & E. edges; dug pits in each sec. 5 1/2 ft. dist. and raised a mound of earth 2 ft. high 4 1/2 ft. base around post.

Land rolling and hilly, soil 3d rate.

Timber of oak and dense undergrowth of chemisal.

West on a random line bet. secs. 8 and 17.

Va. 13° 30' E.

37.68 Int. SE. bdy. of Pauma Rancho at a point 13.07 chs. S. 56 1/2° W. from cor. No.5, and after diligent search, finding no trace of closing cor. to secs. 8 and 17, set a post 4 ft. long 4 in. sq.

with marked stone 12 ins. in the ground for closing cor. to secs. 8 and 17, marked C.C.T. 10 S. R. 1 E. on E., S. 8 on N. and S. 17 on S. faces, with 2 notches on N. and 4 notches on S. faces; dug pits 18 x 18 x 12 ins. N. & S. & E. of post 5 1/2 ft. dist. and raised a mound of earth 2 ft. high 4 1/2 ft. base around post.

Thence I run

East on a true line bet. secs. 8 and 17.

Va. 13° 30' E.

Along mountain.

37.68 The cor. to secs. 8, 9, 16, 17.

Land mountainous, soil 3d rate.

Dense undergrowth of chemisal.

South on a random line bet. secs. 16, 17.

Va. 13° 30' E.

Descend.

40.00 After diligent search, being unable to find old 1/4 sec. cor., I



set a post 3 ft. long 3 in. sq. with qt. of charcoal 12 ins. in the ground for 1/4 sec. cor., marked 1/4 S. on W. face; dug pits 18 x 18 x 12 ins. N. & S. of post 5 1/2 ft. dist. and raised a mound of earth 1 1/2 ft. high 3 1/2 ft. base around post.

80.00 After diligent search, being unable to find old sec. cor., I set post 4 ft. long 4 ins. sq. with qt. of charcoal 12 ins. in the ground for cor. to secs. 16, 17, 20, 21, marked T. 10 S. S. 16 on NE., R. 1 E. S. 21 on SE., S. 20 on SW. and S. 17 on NW. faces with 3 notches on S. and 4 notches on E. edges; dug pits 18x18x12 ins. in each sec. 5 1/2 ft. dist. and raised a mound of earth 2 ft. high 4 1/2 ft. base around post.

Land mountainous, soil 3d rate.

Dense undergrowth of chemisal.

-----  
West on a random line bet. secs. 17 and 20.

Va. 13° 30' E.

Descend.

14.35 Int. bdy. of Rancho Cuca, 46.84 S. 45° E. from cor. No.4, which is a live oak 2 1/2 ft. dia. marked C. No.4, and 19 lks. S.45° E. from granite stone 14 x 8 x 6 in.

40.00 After diligent search, being unable to find old 1/4 sec. cor., I set a post 3 ft. long 3 ins. sq. with qt. of charcoal, 12 ins. in the ground for 1/4 sec. cor., marked 1/4 S. on N. face; dug pits 18 x 18 x 12 inw. E. & W. of post 5 1/2 ft. dist. and raised a mound of earth 1 1/2 ft. high 3 1/2 ft. base around post.

61.60 Int. bdy. line of Rancho Cuca, 15.52 chs. S. 6 3/4° W. from cor. NO.3 which is a live oak 4 ft. dia. marked C. No.3, and 28 lks. N.6 3/4° W from granite stone 20 x 12 x 10 ins. to find old cor. to secs. 17, 18, 19, 20.

I set a post 4 ft. long 4 in. sq. 12 ins. in the ground for cor. secs. 17, 18, 19, 20, marked T. 10 S. S. 17 on NE., R. 1 E. S.20 on SE., S. 19 on SW. and S. 18 on NW. faces, with 3 notches on S. and 5 notches on E. edges, from which brs. a

White oak 20 ins. dia. N. 77 1/2° W. 214 lks. dist.

marked T. 10 S. R. 1 E. S. 18 B.T.

No other tree within limits, dug pits 18 x 18 x 12, in secs. 17, 19, 20, 5 1/2 ft. dist. and raised an earth mound 2 ft. high 4 1/2 ft. base around post.

Land rolling, soil 3d rate.

Timber of oak and dense undergrowth of chemisal.

-----  
North on a random line bet. secs. 17, 18.

Va. 13° 30' E.

Descend.

21.76 Int. SE. bdy. of Pauma Rancho, at a point 4.91 chs. S. 36 1/2° W. from post P. 80.00 chs. and after diligent search, finding no trace of old closing cor. to secs.17, 18, set post 4 ft. long 4 ins. sq. 12 ins. in the ground for same, marked C.C.T. 10 S. R. 1 E. on S., S. 17 on E. and S. 18 on W. faces, with 5 notches on E. and 1 notch on W. faces, from which brs. a

Live oak 40 ins. dia. S. 3°E. 372 lks. dist.

marked T. 10 S. R. 1 E. S. 17 B.T.

No other tree within limits, raised a stone mound around post.

Pits impracticable.

Land rolling, soil 3d rate.

Timber of oak and dense undergrowth of chemisal.



Retracing

T. 10 S. R. 1 E. S.B.M.

From the cor. to secs. 17, 18, 19, 20, I run  
West on a random line bet. secs. 18, 19.

Va. 13° 30' E.

16.65 Int. SE. bdy. of Pauma Rancho, 8.14 chs. N. 56½° E. from post P.  
120.00 chs. and after diligent search, being unable to find old  
closing cor. to secs. 18, 19, set a post 4 ft. long 4 ins. sq.  
12 ins. in the ground for closing cor. to secs. 18, 19, marked  
C.C.T. 10 S. R. 1 E. on E., S. 18 on N. and S. 19 on S. faces,  
with 3 notches on N. & S. faces, from which brs. a

White oak 20 in. dia. N. 58° E. 210 lks. dist.

marked T. 10 S. R. 1 E. S. 18 B.T.

White oak 24 in. dia. S. 9° E. 62 lks. dist.

marked T. 10 S. R. 1 E. S. 19 B.T.

No other tree within limits, raised a stone mound around post.  
Pits impracticable.

Land mountainous, soil 3d rate.

Timber of oak and dense undergrowth of chemisal.

February 23, 1884

A. P. HANSON.

Vol. 173-16

W.B. T. 10 S. R. 1 E. S.B.M.

(From cor. to secs. 1, 6, 7 and 12, T. 11 S. R. 1 E.)  
North on a random line along Meridian.

Va. 13- 27' E.

I set temp. cors. at each 40 and 80 chs., and at 121.48 chs.,  
arrive at a point 152 lks. E. of 1/4 sec. cor. bet. secs. 31 and  
36, T. 10 S. R. 1 E., the locus of which I determine from the  
following bearing tree; viz;

An Aspen 12 in. dia. N. 52½° W. 428 lks. dist. mkd. 1/4 S.B.T.

Being unable to find any other trace of cor., I remark same by  
setting a post 3 ft. long 3 in. sq. with marked stone 12 ins. in  
the ground marked 1/4 S. on W. face and raised a stone mound around  
post. Pits impracticable.

Thence I run

South 43° E. on a true line bet. secs. 31 and 36.

Va. 13- 27' E.

Over level land.

4.58 Cross Rio San Luis El Rey 38 lks. wide, course S. 80° W.

17.00 Leave bottom land and ascend.

40.00 Set a granite stone 22 x 16 x 10 in. 16 in. in the ground for cor.  
to Tps. 10 and 11 S. Rs. 1 E. & W., marked with 6 notches on each  
edge, and raised a stone mound alongside. Pits impracticable.

Land level and mountainous, soil 1st and 3d rate.

Timber of aspen and oak and dense undergrowth of chaparral.

E.B. T. 11 S. R. 1 E. S.B.M.

From 1/4 sec. cor. bet. secs. 1 and 6

North on a random line

Va. 13° 27' E.



notches on W. edges and raised a stone mound alongside.

Pits impracticable.

Land mountainous, soil 3d rate.

Timber of oak and dense undergrowth of chaparral.

S. 89° 58' E. on a true line bet. secs. 3 5 and 2.

Va. 13° 27' E.

Over broken land.

To old 1/4 sec. cor.

Land mountainous, soil 3d rate.

Timber of oak and dense undergrowth of chaparral.

March 6, 1884

A. P. HANSON.

Vol. 357-7

From the cor. to secs. 19, 24, 25 and 30, which is a mound of earth with pits, set a granite stone 14 x 14 x 5 in. 8 in. deep, marked with 2 notches on the S. and 4 on the N. edges, and raised a mound of earth and stone 24 in. high and 4 ft. dia. at base alongside.

From which brs. a

White oak 14 in. dia. N. 31° W. 294 lks. dist.

marked T. 10 S. R. 1 W. S. 24 B.T.

Thence

North bet. secs. 19 and 24.

Va. 14° 55' E.

Ascend along SW. slope.

12.65

To a small stone mound S. 68½° W. 21.15 chs. dist. from station No.4 of the Pauma Rancho, which is a post 3 in. sq. marked P. No.4 in a large mound of rocks.

Set for cor. to frac. secs. 19 and 24, on meridian, a granite stone 24 x 12 x 8 in. 16 in. deep, marked P. on N. face, raised a mound of stone and earth 4 ft. dia. at base and 2 ft. high alongside.

Dig pits on meridian line and bdy. of Grant, 24 x 18 x 12 ins.

8 lks. dist., from which brs. a

White oak 15 in. dia. S. 51½° W. 168 lks.

marked T. 10 S. R. 1 W. S. 24 B.T.

Land mountainous, soil 2nd and 3d rate.

Dense chaparral.

South bet. secs. 25 and 30.

Va. 14° 35' E.

Descend.

13.50

Ravine course SW. Ascend.

25.50

Spur sloping SW. Descend steep.

40.45

To a point 21 lks. E. of 1/4 sec. cor., a granite stone 8 in. above ground marked 1/4 on W. face, with a stone mound alongside.

The course of this 1/2 mile is S. 18° W.

Continue descent.

80.85

To a point 21 lks. E. of cor. to secs. 25, 30, 31 and 36, a quartz stone 8 in. above ground marked with 5 notches on the N. and 1 on the S. edges, a stone mound 4 ft. dia. at base and 2 ft. high alongside., from which brs. a

White oak 15 in. dia. S. 70° W. 433 lks.

marked T. 10 S. R. 1 W. S. 36 B.T.



Land mountainous, soil 2nd and 3d rate. Dense chaparral.

South bet. secs. 31 and 36.

Va. 13° E.

Descend.

4.50 Creek 10 lks. wide course SW., run thence along broken W. slope.  
26.70 Trail from Rincon to the Protrero Rancho bearing NE. & SW.  
40.00 Not finding the 1/4 sec. cor., set a post 48 x 4 x 4 in. 12 in. deep marked 1/4 on the W. face, raised a mound of earth 4 ft. dia. at base 2 ft. high around post and dug pits 24 x 18 x 12 in. E. & W. 8 lks. dist., from which brs. a

Cottonwood 12 in. dia. N. 22° W. 53 lks. mkd. 1/4 S.B.T.

42.20 San Luis Rey river 100 lks. wide course S. 80° W.

45.50 Commence very steep ascent.

72.00 Along steep and brushy W. slope.

80.00 Set a granite stone 24 x 20 x 12 in. marked with 6 notches on the N. E. S. & W. edges, set 18 in. in the ground for cor. to Tps. 10 and 11 S. Rs. 1 E. & W., raised a mound of stone 24 in. high and 4 1/2 ft. dia. at base alongside ( to the SW.) from which brs. a

White oak 14 in. dia. N. 20° E. 5.01 chs.

marked T. 10 S. R. 1 E. S. 31 B.T.

Land mountainous, soil 2nd and 3d rate.

Dense chaparral. Cottonwood timber along river.

July 27, 1885

East on a random line bet. Tps. 10 and 11 S. through R. 1 E.

Va. 13° E.

Setting temp. cors. every 40 and 80 chs., at 482.38 chs., arrive at a point 84 lks. S. of cor. to Tps. 10 and 11 S. Rs. 1 and 2 E. which is a white oak 22 in. dia. marked T. 10 S. R. 2 E. S. 31 on NE. The blazes are covered to a depth of 4 ins., with new growth of wood. I do not disturb the other side, but cut 6 notches on the N. S. E. & W. sides. Mark a live oak 24 in. dia. N. 1° W. 54 lks. dist., T. 10 S. R. 1 E. S. 36 B.T.

Thence

West on a true line bet. secs. 1 and 36.

Va. 12° 15' E.

Ascend brushy E. slope.

20.00 Brushy ridge brg. N.

38.00 Ravine course NW. Ascend.

40.00 Set a granite stone 16 x 8 x 8 in. 10 in. deep marked 1/4 on N. face, for 1/4 sec. cor., raised a stone mound 4 ft. dia. at base and 2 ft. high alongside.

Along N. slope.

70.00 Ascend.

80.00 Set a granite stone 14 x 8 x 8 ins. 8 ins. deep marked with 5 notches on the W. and 1 on the E. edges, for cor. to secs. 1, 2, 35 and 36, Made a stone mound 4 ft. dia. at base and 2 ft. high alongside. Pits impracticable.

Land mountainous, soil 2nd and 3d rate. Dense chaparral.

West on a true line bet. secs. 2 and 35.

Va. 13° 35' E.

Ascend.

9.50 Summit of ridge bearing N. Descend brushy NW. slope.

31.00 Ascend.



40.00 Set an oak post 48 x 3 x 3 in. 12 in. deep, marked 1/4 S. on N. face, for 1/4 sec. cor., raised a stone and earth mound 4 ft. dia. at base and 2 ft. high around post, and dug pits 24 x 18 x 12 ins. N. & S. 8 lks. dist.

Continue ascent.

80.00 Set an oak post 48 x 4 x 4 in. 12 in. deep marked T. 10 S. R. 1 E. S. 55 on NE., S. 34 on NW., T. 11 S. R. 1 E. S. 2 on SE. and S. 3 on SW. faces, with 4 notches on the W. and 2 on the E. edges, for cor. to secs. 2, 3, 34 and 35, raised a mound of stone and earth 4 ft. dia. at base and 2 ft. high around post.

Land mountainous, soil 1st, 2nd and 3d rate.

Dense chaparral.

-----

West on a true line bet. secs. 3 and 34.

Va. 14° E.

Ascend.

8.00 Brushy ridge bearing N. Descend along brushy NE. slope.

40.00 Set a post 48 x 3 x 3 ins. 12 in. deep marked 1/4 S. on N. face for 1/4 sec. cor., raised a mound of earth and stone 4 ft. dia. at base and 2 ft. high around post and dug pits 24 x 18 x 12 ins. N. & S. 8 lks. dist.

48.00 Ascend.

62.00 Spur sloping NW.

70.00 Enter grove of white oak timber brg. N. & S.

79.40 Sag bearing N. Ascend.

80.00 Set an oak post 48 x 4 x 4 in. 12 in. deep, marked T. 10 S. R. 1 E. S. 34 on NE., S. 33 on NW., T. 10 S. R. 1 E. S. 3 on SE., S. 4 on SW. faces with 3 notches on the E. & W. edges for cor. to secs. 3, 4, 33 and 34. Raised a mound of earth 4 ft. at base and 2 ft.

high around post and dug pits 24 x 18 x 12 ins. in each sec. 8 lks. dist., from which brs. a

White oak 14 in. dia. S. 15° E. 53 lks. dist.

marked T. 11 S. R. 1 E. S. 3 B.T.

White oak 10 in. dia. N. 87° E. 189 lks. dist.

marked T. 10 S. R. 1 E. S. 34 B.T.

White oak 14 in. dia. N. 57° W. 93 lks. dist.

marked T. 10 S. R. 1 E. S. 33 B.T.

White oak 14 in. dia. S. 39½° W. 110 lks. dist.

marked T. 11 S. R. 1 E. S. 4 B.T.

Land mountainous, soil 2nd and 3d rate.

Dense chaparral. W. 10.00 chs. good oak timber.

July 28, 1885

-----

West bet. secs. 4 and 33.

Va. 13° E.

Ascend.

3.00 Spur N.

7.00 Leave timber bearing N. & S. & enter dense chaparral.

20.75 Ravine course N. 10° W.

37.00 Summit of brushy spur sloping N.

40.00 Marked a granite stone imbedded in the ground, of which 4 x 5 x 2 ft. is above, marked 1/4 on N. face and a X on top for center point, descend steep over granite boulders.

45.10 Deep rocky ravine, course N. Steep ascent.

56.50 Summit of high brushy spur brg. N. 45° W. Descend along SW. slope.

80.00 Set a granite stone 18 x 10 x 7 in. 12 in. deep marked with 4 notches on the E. and 2 notches on the W. edges; raised a mound



4 ft. dia. at base and 2 ft. high alongside. for cor. to secs. 4, 5, 32 and 33, from which the summit of a high, rocky peak N. of river brs. N. 58° W.

Land very rough and mountainous, soil 2nd and 3d rate.

Dense chaparral. E. 7 chs., good oak timber.

West on a true line bet. secs. 5 and 32.

Va. 13° E.

Descend abruptly.

24.58 San Luis Rey river 60 lks. wide course S. 40° W.

Commence steep ascent.

40.00 Set a granite stone 14 x 10 x 10 ins. 8 ins. deep marked 1/4 on N. face for 1/4 sec. cor., raised a stone mound 4 ft. dia. at base and 2 ft. high alongside.

49.16 A large granite boulder on line.

55.00 A rocky spur sloping S. from peak. Descend.

61.40 San Luis Rey river 60 lks. wide course N. 40° W.

Commence steep ascent along NE. slope.

80.00 Set a granite stone 16 x 8 x 8 ins. 10 ins. deep marked with 5 notches on the E. and 1 on the W. edges for cor. to secs. 5, 6, 31 and 32, raised a stone mound 4 ft. dia. at base and 2 ft. high alongside.

Land mountainous, soil 3d and 4th rate. Dense chaparral.

S. 89° 24' W. on a true line bet. secs. 6 and 31.

Va. 13° 5' E.

Along brushy and broken N. slope.

40.00 Set a granite stone 14 x 14 x 13 ins. 8 in. deep, marked 1/4 on N.

face for 1/4 sec. cor., raised a mound of stone 3 1/2 ft. dia. at base and 2 ft. high alongside.

59.00 Ascend along NE. slope.

77.00 Summit of high rocky ridge brg. N. Descend.

82.38 To cor. to Tps. 10 and 11 S. Rs. 1 E. and 1 W.

Land mountainous, soil 2nd and 3d rate. Dense chaparral.

July 29, 1885

From the cor. to Tps. 10 and 11 S. Rs. 1 and 2 E., I run North on a random line bet. Rs. 1 and 2.

Va. 12° 15' E.

At 159.28 chs. arrive at cor. to secs. 19, 24, 25 and 30, a mound of earth, Set a granite stone 14 x 10 x 6 in. 8 in. deep, raised a stone mound 4 ft. dia. at base and 2 ft. high alongside, from which brs. a

Black oak 50 in. dia. N 10° E. 55 lks.

marked T. 10 S. R. 2 E. S. 19 B.T.

Black oak 6 in. dia. S. 30° W. 6 lks. dist.

marked T. 10 S. R. 1 E. S. 25 B.T.

Black oak 50 in. dia. N. 85° W. 75 lks. dist.

marked T. 10 S. R. 1 E. S. 24 B.T.

The tree to the SE. is dead.

Mark a live oak 10 in. dia. brg. S. 19° E. 138 lks. dist.

marked T. 10 S. R. 2 E. S. 30 B.T.

Thence

South on a true line bet. secs. 25 and 30.

Va. 13° E.



2.00 Commence abrupt descent.  
39.82 Set a fir post 48 x 3 x 3 ins. 12 in. deep, marked 1/4 S. on W. face for 1/4 sec. cor., raised a mound of stone around post, from which brs. a  
    Fir 10 in. dia. N. 27° W. 37 lks. dist.  
    Fir 27 in. dia. S. 18° E. 19 lks. dist.  
    Both marked 1/4 S.B.T.  
45.25 A Fir 20 in. dia.  
45.85 Creek 10 lks. wide in deep canon, course S. 20° W.  
Ascend along steep NW. slope.  
53.00 Spur sloping SW. Leave timber bearing E. & W.  
69.95 Ravine course SW. Ascend.  
72.00 Spur sloping SW. Descend.  
79.20 Ravine course SW.  
79.64 Set a granite stone 14 x 10 x 7 ins. 8 ins. deep, marked with 1 notch on the S. and 5 on the N. edges, cor. to secs. 25, 30, 31, 36, raised a stone mound 4 ft. dia. at base and 2 ft. high alongside. Dug pits 24 x 18 x 12 ins. in each sec. 8 lks. dist., from which brs.  
    Live oak 24 in. dia. N. 1° W. 54 lks.  
    marked T. 10 S. R. 1 E. S. 25 B.T.  
Land mountainous, soil 2nd and 3d rate.  
Dense chaparral. N. 53 chs. white, black and live oak and fir timber  
-----  
South on a true line bet. secs. 31 and 36.  
    Va. 12° 48' E.  
Ascend.  
3.50 Spur sloping SW.  
15.00 To San Luis Rey river, the main channel 50 lks. wide, course N. 80° W. Thence over rocky, high water bed of river.

21.00 Leave bed bearing N. 80° W. Ascend and enter oak timber.  
39.82 Set a post 48 x 4 x 4 ins. 12 in. deep, marked 1/4 S. on W. face, for 1/4 sec. cor., raised a mound of stone 4 ft. dia. at base and 2 ft. high around post, from which brs. a  
    White oak 16 in. dia. S. 19° W. 62 lks. dist.  
    White oak 14 in. dia. N. 72° E. 133 lks. dist.  
    Both marked 1/4 S.B.T.  
42.00 Ascend moderately.  
67.50 Brushy spur sloping NE.  
76.40 Rocky course NE.  
79 64= The cor. to Tps. 10 and 11 S. Rs. 1 and 2 E.  
Land mountainous, soil 2nd and 3d rate.  
Dense chaparral.  
South 59 chs., good oak timber.

July 30, 1885

WM. MINTO.

Vol. 360-9  
-----

North bet. secs. 35 and 36.

Va. 13° 35' E.

Descend through dense chaparral.

40.00 Marked a live oak 6 in. dia. 1/4 S. on W. side for 1/4 sec. cor.  
41.00 Creek 4 lks. wide running N. from S. 20° W.; along same.  
45.00 Leave creek turns N. 20° W.  
45.00 Ascend.



60.00 Spur sloping NW. Descend.  
 71.40 Ravine course N. 50° W.  
 80.00 Set a granite stone 14 x 12 x 8 in. 8 in. deep, marked with 1 notch on the S. & E. edges; raised a stone mound 4 ft. dia. at base and 2 ft. high alongside, for cor. to secs. 25, 26, 35 and 36.  
 Land mountainous, soil 2nd and 3d rate. Dense chaparral.

-----  
 East on a random line bet. secs. 25 and 36.

Va. 13° 33' E.

Ascend along W. slope.

40.00 Set temp. 1/4 sec. cor.

80.24 Int. E.B. of Tp. 40 lks. N. of cor. to secs. 25, 30, 31 and 36,

Thence

N. 89° 43' W. on a true line bet. secs. 25 and 36.

Va. 12° 48' E.

Descend.

1.00 Ravine course SW. Thence along broken S. slope.

15.50 Foot of mountain brg. NW. & SE.

15.85 San Luis Rey river 60 lks. wide, course N. 60° W.

Thence - cross high water bed of river.

27.00 Shallow channel of river 100 lks. wide course N. 70° W.

Ascend steep NE. slope.

40.12 Set a granite stone 10 x 6 x 6 in. 6 in. deep marked 1/4 on N. face, for 1/4 sec. cor., from which brs. a

Fir on S. side of river N. 50° 51' E. about 5.00 chs. dist.

Another N. 3° 20' E. about 8.00 chs. dist.

These are the only fir trees along river.

Continue ascent.

54.50 Brushy spur sloping NW.  
 80.24 To cor. to secs. 25, 26, 35 and 36.  
 Land mountainous, soil 2nd and 3d rate. Dense chaparral.

-----  
 North bet. secs. 25 and 26.

Va. 13° 33' E.

Ascend.

7.50 Descend.

14.20 San Luis Rey river 100 lks. wide course S 80° W.

16.00 Commence steep ascent.

29.00 Sharp spur brg. SE. Thence along broken E. slope.

40.00 Set a post 48 x 3 x 3 in. 12 in. deep, marked 1/4 S. on W. face, for 1/4 sec. cor., raised a stone and earth mound 24 in. high and, 4 ft. base around post, and dug pits 24 x 18 x 12 ins. E. & W., 8 lks. dist.

75.00 Ascend abruptly along S. slope.

80.00 On steep S. slope of mountain, set a granite stone 16 x 8 x 8 in. 10 in. deep, marked with 2 notches on the S., and 1 on the E. edge for cor. to secs. 23, 24, 25 and 26, raised a stone mound 4 ft. dia. at base and 2 ft. high on S. side, from which brs. a

White oak 10 in. dia. N. 9° E. 190 lks. dist.

marked T. 10 S. R. 1 E. S. 24 B.T.

Land mountainous, soil 2nd and 3d rate. Dense chaparral.

July 31, 1885

-----  
 East on a random line bet. secs. 24 and 25.

Va. 14° E.

40.00 Set a temp. 1/4 sec. cor.

80.60 Int. E.B. of Tp. 80 lks. N. of cor. to secs. 19, 24, 25 and 30,



Thence

N. 89° 26' W. on a true line bet. secs. 24 and 25.

Va. 13° E.

Descend.

- 4.00 Ravine course SW. Ascend.
- 9.00 Summit of high ridge bearing SW. Descend along broken SW. slope.
- 36.10 Creek 10 lks. wide course SW.
- 37.00 Sharp spur sloping S.
- 40.50 Set a granite stone 14 x 8 x 8 in. 8 in. deep, marked 1/4 on N. face for 1/4 sec. cor., raised a mound of stone 4 ft. dia. at base and 2 ft. high alongside.
- 50.00 Deep canon course S., ascend steep SE. slope.
- 80.60 For cor. to secs. 23, 24, 25 and 26.  
Land mountainous, soil 2nd and 3d rate. Dense chaparral.

-----  
North bet. secs. 23 and 24.

Va. 14° E.

Ascend steep.

- 10.00 Ascend moderately.
- 13.00 Trail on ridge bearing NE. & SW.
- 16.40 A black oak 20 in. dia., descend steep, and enter oak and fir timber.
- 29.00 Creek 10 lks. wide course SW. Ascend abruptly and leave timber bearing E. & W.
- 40.00 On steep S. slope of mountain, set a granite stone 14 x 10 x 6 in. 8 in. deep, marked 1/4 on W. face, for 1/4 sec. cor., raised a stone mound 4 ft. dia. at base and 2 ft. high alongside.  
Continue steep ascent.
- 80.00 On summit of mountain bearing NW. & SE.

Set a granite stone 24 x 16 x 10 in. 14 in. deep, marked with 3 notches on the S. and 1 on the E. edges, for cor. to secs. 13, 14, 23 and 24, raised a stone and earth mound 4 ft. dia. at base and 2 ft. high alongside, and dug pits 24 x 18 x 12 ins. in each sec., 8 lks. dist., from which brs. a

Black oak 20 in. dia. S. 61° E. 130 lks. dist.

Gnarled cedar 26 in. dia. N. 70° W. 210 lks. dist.

Marked black oak T. 10 S. R. 1 E. 24 B.T.

Cannot mark the cedar.

Land mountainous, soil 2nd and 3d rate.

Some black and white oak and fir timber. Dense chaparral.

-----  
S. 89° 57' W. bet. secs. 14 and 23.

Va. 13° E.

- 39.93 Set temp. 1/4 sec. cor.
- 79.86 Not finding cor. to secs. 14 and 15, 22 and 25, set temp. cor.  
Thence  
N. 89° 57' W. bet. secs. 15 and 22.

Va. 15° 20' E.

- 40.06 Set a temp. 1/4 sec. cor.
- 80.28 Int. N. & S. line 2 lks. N. of old stone mound, the cor. to secs. 15, 16, 21 and 22, and set a granite stone 20 x 8 x 5 in. 14 in. deep, marked with 3 notches on S. & E. edges, raised a mound of stone 4 ft. dia. at base and 2 ft. high alongside, from which brs. a  
Live oak 20 in. dia. S. 83° W. 76 lks. dist.  
marked T. 10 S. R. 1 E. S. 22 B.T.

Thence

S. 89° 57' E. on a true line bet. secs. 15 and 22.

Va. 12° 45' E.



Ascend.

- 3.50 Summit of high spur bearing SW. Descend along SE. slope.
- 40.10 Set a post 48 x 3 x 3 in. 12 in. deep, marked 1/4 S. on N. face, for 1/4 sec. cor., raised a stone mound 4 ft. dia. at base and 2 ft. high around post.
- Continue descend.
- 45.06 Creek 4 lks. wide in deep canon, bearing S. 20° W. Ascend.
- 75.80 Stream of water 5 lks. wide course S. 78° W. Continue ascent.
- 80.20 To a white oak 6 in. dia. which I mark T. 10 S. R. 1 E. S. 14 on NE., S. 15 on NW., S. 22 on SW. and S. 23 on SE. face, with 3 notches on the S. and 2 on the E. edges, for cor. to secs. 14, 15, 22 and 23, from which brs. a

White oak 10 in. dia. N. 80° E. 49 lks. dist.

marked T. 10 S. R. 1 E. S. 14 B.T.

White oak 6 in. dia. S. 50° E. 10 lks. dist.

marked T. 10 S. R. 1 E. S. 23 B.T.

Fir 6 in. dia. S. 83° W. 44 lks. dist.

marked T. 10 S. R. 1 E. S. 22 B.T.

Land mountainous, soil 2nd and 3d rate.

Timber, good fir and white, black and live oak.

Dense undergrowth and chaparral.

-----  
N. 89° 57' E. on a true line bet. secs. 14 and 23.

Va. 13° 20' E.

Ascend steep.

- 15.00 Ascend moderately.
- 19.60 Trail on ridge brs. S. 42° W.
- 39.97 Set a granite stone 14 x 12 x 11 in. 8 in. deep marked 1/4 on N. face, for 1/4 sec. cor., raised a mound of stone 4 ft. dia. at

base and 2 ft. high alongside.

- 41.50 Creek 10 lks. wide course S. Ascend.
- 60.00 Leave timber bearing N. & S.
- 74.50 Spur sloping SW. Along S. slope.
- 79.94 To cor. to secs. 13, 14, 23 and 24.
- Land mountainous, soil 2nd and 3d rate.
- W.  $\frac{3}{4}$  of a mile heavy oak, and fir timber.
- Dense chaparral and undergrowth.

August 1, 1885

-----  
S. 89° 56' W. bet. secs. 16 and 21.

Va. 12° 45' E.

- 40.03 Set temp. 1/4 sec. cor.
- 79.84 Int. N. & S. line 27 lks. N. of a mound of stone, the cor. to secs 16, 17, 20 and 21, where I set a granite stone 24 x 18 x 6 ins. 16 in. deep, marked with 3 notches on the S. and 4 on the E. edges, and raised a mound of stone 4 ft. dia. at base and 2 ft. high alongside. Thence
- N. 89° 44' E. on a true line bet. secs. 16 and 21.

Va. 13° E.

Ascend.

- 13.50 Enter timber bearing N. & S.
- 13.50 Brushy spur sloping S.
- 21.92 Ravine course S. Ascend.
- 39.92 Marked a live oak 40 in. dia. 1/4 S. on N. face, for 1/4 sec. cor. from which brs. a

White oak 16 in. dia. N. 54 $\frac{1}{2}$ ° E. 96 lks. dist.

Live oak 18 in. dia. S. 47° E. 72 lks. dist.

Both marked 1/4 S.B.T.



43.00 Descend very steep.  
 44.60 Creek 4 lks. wide course S. 15° W. Ascend.  
 62.00 Summit of spur bearing S. 10° W. Steep descent.  
 72.80 Creek 10 lks. wide in deep canon bearing S. 10° W.  
 79.84 To cor. to secs. 15, 16, 21 and 22.  
 Land mountainous, soil 2nd and 3d rate.  
 E. 67 chs., good oak timber. Dense chaparral.

---

North bet. secs. 16 and 17.  
 Va. 13° E.

Along brushy W. slope.

8.60 Creek 4 lks. wide course S. 25° W.  
 Ascend steep SE. slope.

28.50 Spur bearing SW. Steep descent.

36.00 Ravine course S. 40° W. Steep ascent.

40.00 Set a granite stone 16 x 10 x 6 in. 8 in. deep marked 1/4 on W. face  
 for 1/4 sec. cor., raised a stone mound 4 ft. dia. at base and 2 ft.  
 high alongside, for 1/4 sec. cor., from which brs. a  
 Hollow live oak 30 in. dia. N. 3° E. 404 lks. dist.  
 marked 1/4 S.B.T.

44.50 Sharp spur, sloping S. 40° W.  
 From this point the country in advance is broken and mountainous,  
 unfit for cultivation or other use. Land mountainous.  
 Dense chaparral August 3, 1885  
 Vol. 382-24 WILLIAM MINTO.

---

From the old cor. to secs. 7, 12, 13 and 18, on the E.B. of T. 10 S  
 R. 1 E. which is a tree, dead but still standing, 15 ft. high, 2½  
 ft. in dia., marked T. 10 S. 12 on NE., R. 1 E. S. 13 on SW.  
 faces.  
 There are other blazes on the NW. & SE. faces with marks of the  
 scribe, from which, owing, to decay are rendered illegible.  
 A tree 12 in. in dia. brs. S. 24 lks. freshly marked T. 2 E.  
 S. 18 B.T. and through which a wire fence runs E. & W. but turns  
 before reaching the cor. tree and runs S.  
 The 1st tree has been recognized by the residents in the vicinity  
 for many years and probably is the true original cor., and it  
 answers the description in the field notes as well as could be  
 expected.  
 The other tree was marked by a local surveyor.  
 The irregular markings of the cor. are as given above and are  
 probably due, as in many other canes I have encountered, to the  
 carelessness of assistants; thence I run  
 North 1°22' W. on a true line bet. secs. 7 and 12.  
 Va. 13° 32' E.

Descend through oaks and dense brush.

10.00 Leave timber, enter Mendenhall valley about 250 ft. below last  
 sec. cor. clear.

16.30 Gully course NW.

21.00 Gully course NW.

31.00 Leave clearing, enter oak timber and mountains.

40.16 A point 66 lks. W. of oak brush freshly marked 1/4 S. on W. face,  
 which I am told was marked by a local surveyor in an irregular way.  
 It is at the end of a wire fence, course W. and is satisfactory  
 to the owners of the land adjacent, and I therefore, left it  
 undisturbed.



- 66.00 Top of ridge about 300 ft. above valley, course W.  
Descend abruptly.
- 77.24 Re-establish cor. at proportionate dist. as follows:  
Set a granite stone 40 x 26 x 12 in. 30 in. in the ground for cor.  
to secs. 1, 6, 7 and 12, marked with 1 notch on N. and 5 notches  
on S. edges and raised a mound of earth and stone 3½ ft. high 4½  
ft. base alongside. Pits impracticable.  
Cleared brush 10 ft. around.  
Land valley 20 chs.; remainder mountainous.  
Soil, sandy loam, 20 chs. 1st rate; remainder, rocky & 3d rate.  
Timber scattering oak, 40 chs. dense undergrowth of oak and  
buckbrush, manzanita, soapbrush and poison oak, 57.24 chs.

December 7, 1893  
-----

North 1° 22' W. on a true line bet. secs. 1 and 6.

Va. 13° 32' E.

Descend steep broken and brushy mountains.

- 27.00 Leave mountains, enter valley, about 600 ft. below last sec.cor.
- 36.50 Branch of San Luis Rey river, 20 lks. wide, course E.  
Oaks and willow.
- 38.62 Re-establish cor. at proportionate dist. as follows:  
Set a granite stone 19 x 12 x 8 ins. 14 ins. in the ground for  
1/4 sec. cor. marked 1/4 on W. face, from which an  
Oak 4½ ft. in dia. brs. S. 8° W. 28 lks. dist.  
marked 1/4 S.B.T.  
Oak 3½ ft. in dia. brs. N. 3°30' E. 113 lks. dist.  
marked 1/4 S.B.T.

The Government monument on Smith's Mt. brs. N.20°35' W. about  
2 miles dist.

- Dug pits 24 x 24 x 12 ins. N. & S. of stone 5½ ft. dist. and  
raised a mound of earth and stone 3½ ft. high 7 ft. base alongside.
- 41.00 Leave valley, enter broken and brushy mesa.
- 46.00 Gulch about 20 ft. deep, course SW.
- 77.24 The cor. to Tps. 9 and 10 S. Rs. 1, 2, E. which is a granite  
stone 15 x 12 x 8 in. above ground marked with 6 notches on each  
edge and a mound of earth and stone 3½ ft. high 6 ft. base  
alongside.  
Land valley, 14 chs.; remainder mountainous.  
Soil rocky, 3d rate.  
Timber, oak and willow along San Luis Rey river and gulches,  
dense undergrowth of buckthorn, manzanita, oakbrush, chamisal  
and redwood, 77.24 chs.

December 7, 1893

C. R. GLASS.

Vol. 391-11  
-----

Notes for Ranchos Pauma and Cuca or El Potrero are under  
separate cover.  
-----



RESURVEY OF  
RANCHO CUCA or El POTRERO.  
-----

Commencing at Station No.3, a live oak 46 in. dia. marked C. No.3  
on summit of rocky raise and running

Thence

N.  $54\frac{1}{4}^{\circ}$  E

Va.  $15^{\circ} 36'$  E.

- 9.00 A spring of water 20 lks. to the left - water runs W.  
10.46 Indian house brs. N.  $55\frac{3}{4}^{\circ}$  W. 150 lks. dist.  
12.00 Enter vineyard brg. E. & W.  
20.00 Leave vineyard brg. E. & W.  
21.00 Steep descent.  
21.50 Ditch 2 lks. wide course W.  
22.20 Creek 4 lks. wide course W.  
24.05 To live oak 30 in. dia. marked C No.4, for station No.4 of the  
Potrero Rancho.  
Thence  
S.  $45^{\circ}$  E.  
Descend.  
1.80 Creek 5 lks. wide course W.  
3.30 Creek 4 lks. wide course S. Steep ascent.  
5.50 Top of steep ascent, ascend moderately.  
17.00 Descend.  
18.25 Ravine course SW. Ascend.  
21.50 Spur sloping W.  
38.50 Ravine course W.  
47.00 To a mound, the cor. to frac. secs. 17 and 20, where I set an oak  
post 50 x 3 x 3 in. marked T. 10 S. R. 1 E. on E., S. 17 on N\* and  
S. 20 on S. faces, raised a mound of stone and earth 24 in. high  
and 4 ft. dia. at base around post, and dug pits 24 x 18 x 12 on  
grant line and E. 8 lks. dist., from which brs. a

FIELD NOTES

of

Rancho Cuca or El Potrero

T. 10 S. R. 1 E. S.B.M.



RESURVEY OF  
Rancho Cuca or El Potrero  
-----

- White oak 10 in. dia. N. 45° E. 49 lks. dist.  
marked T. 10 S. R. 1 E. S. 17 B.T.
- 66.30 To a mound of rocks, station No.5 of Rancho, also cor. to secs.  
20 and 21, from which brs. a  
Live oak 30 in. dia. S. 66° E. 40 lks. dist.  
marked C. No. 5 B.T.  
Rancho house brs. S. 42° W.
- Thence  
S. 65½° E. Va. 12° 35' E.  
Along S. slope.
- 21.70 Creek 5 lks. dist., course S. 10° E.  
29.70 Old road bearing NE. & SW.  
32.05 Creek 5 lks. wide course S.  
38.00 Spur bearing SW. along SW. slope.  
72.20 To white oak 16 in. dia. station No.6 of Rancho, marked C. No.6  
Thence  
S. 49¾° E.  
Descend.
- 18.80 To cor. to frac. secs. 21 and 22, a granite stone 9 x 5 in. raised  
a mound of stone 4 ft. dia. at base and 2 ft. high alongside,  
from which brs. a  
Live oak 24 in. dia. S. 5° W. 228 lks. dist.  
marked T. 10 S. R. 1 E. S. 21 B.T.
- 32.12 Creek 4 lks. wide course S.  
35.00 Spur sloping S. Descend.  
37.35 Creek 6 lks. wide course S. 20° W.  
43.50 Cross marshy sag bearing S.  
45.50 Road bearing E. & W.

RESURVEY OF  
RANCHO CUCA or EL POTRERO  
-----

- 50.24 To a point 5 lks. S. 40¼° W. of station NO. 7 of Rancho, a granite  
stone 14 x 6 ins. which I mark C. No.7, raised a mound of stone  
and earth 4 ft. dia. at base and 2 ft. high alongside, and dug  
pits N. 49¾° W. and S. 8° W. 24 x 18 x 12, 8 lks. dist.,  
from which brs. a  
Live oak 48 in. dia. S. 11° W. 172 lks. dist.  
marked C. No.7 B.T.  
The true course of this line is S. 49° 48' E.  
Thence  
S. 8° W.
- 4.50 To a mound of rocks, cor. to frac. secs. 22 and 27, a granite stone  
10 x 6 ins. raised a mound of earth and stone 4 ft. dia. at base  
and 2 ft. high alongside, and dug pits 24 x 18 x 12 ins. E. and  
on grant line 8 lks. dist.
- 20.00 Commence steep descent, over rocky S. slope.  
32.90 Creek 4 lks. wide course SW. Ascend along NW. slope.  
65.00 Along W. slope.  
77.16 To a point 28 lks. S. 82° E. of station No. 1, which I re-establish  
from the 2 bearing trees, mark C. No.1, on ledge of rocks, with a  
cross for center point; 5 lks. E. of cor., is a stone wall running  
NE. & SW.  
A White oak 11 in. dia. N. 75° W. 182 lks. dist.  
A White oak 14 in. dia. S. 64° W. 227 lks. dist.  
Both marked C. No.1 B.T.  
The true course of this line is S. 8° 12' W.  
August 4, 1885
- Thence  
N. 87° W.  
Descend.



RESURVEY OF  
Rancho Cuca or El Potrero  
-----

3.00 Commence abrupt descent toward San Luis Rey river, which runs in a deep rocky canon; it being impracticable to measure across, I set flag beyond 2nd crossing of river, and run N.3° E. 15.00 chs. dist., from which flag brs. S. 72° W. The angle at flag is therefore 21° Cot of which is  $2.605 \times 15 = 39.07$

42.07 Ridge bearing N. & S. Descend.

71.40 Ravine course S. Ascend.

75.04 Spur sloping S. Descend.

91.90 To a point 25 lks. S. 3° W. from cor. to frac. secs. 28 and 28, a granite stone 10 x 8 ins. raised a stone and earth mound 4 ft. dia. at base and 2 ft. high alongside.

93.35 Creek 5 lks. wide course S. Ascend along S. slope.

130.00 Summit of ridge bearing N. & S. Descend along NW. slope.

142.00 Commence ascent along NE. slope.

169.00 Rocky ridge sloping N.

169.65 To a point 40 lks. S. 3° W. of station No.2, a granite boulder 3 ft. high marked C. No.2, from which brs. a  
White oak 10 in. dia. N. 10° W. 142 lks. dist.  
marked C. No.2 B.T.

The corrected course of this line is N. 86° 52' W.  
Thence  
N. 6 $\frac{3}{4}$ ° E.  
Descend rocky ridge.

62.50 To cor. to frac. secs. 29 and 20, which is a granite stone 16x10x6 in. on large flat boulder.

63.10 Ravine course W. Ascend.

79 50 Descend.

86.70 Creek 5 lks. wide course SW.

RESURVEY OF  
Rancho Cuca or El Potrero  
-----

88.60 Ditch 4 lks. wide course W. Ascend.

111.60 Ridge bearing NW. & SE.

119 10 Sag course W. Ascend.

125.50 Descend.

134.80 Road to Pala bearing E. & W.

139.00 Gulch course W.

142.81 To cor. to frac. secs. 17 and 20, a granite stone 12 x 10 ins., raised a stone mound alongside.

145.90 Road bearing E. & W.

146.45 Ravine N. 85° W. Ascend.

149.80 Indian Capitan's house brs. to the left 450 chs. dist.

156.60 To live oak 46 in. dia., the place of beginning.

August 5, 1885

WILLIAM MINTO.

Vol. 382-24  
-----



**Ed Fletcher Papers**

**1870-1955**

**MSS.81**

**Box: 42 Folder: 19**

**Business Records - Field Notes - Township  
10 S., Range 1 E., San Bernardino Meridian**



**Copyright:** UC Regents

**Use:** This work is available from the UC San Diego Libraries. This digital copy of the work is intended to support research, teaching, and private study.

**Constraints:** This work is protected by the U.S. Copyright Law (Title 17, U.S.C.). Use of this work beyond that allowed by "fair use" requires written permission of the UC Regents. Permission may be obtained from the UC San Diego Libraries department having custody of the work (<http://libraries.ucsd.edu/collections/mscl/>). Responsibility for obtaining permissions and any use and distribution of this work rests exclusively with the user and not the UC San Diego Libraries.