

WESTERN PIPE & STEEL COMPANY

FACTORIES

OF CALIFORNIA
RICHMOND

TAFT

LOS ANGELES

Los Angeles, Cal. April 21, 1917.

Mr. W. S. Port,
Fletcher Bldg Annex,
San Diego, Cal.

Dear Sir:

Referring to your conversation with our Mr. F. W. Evans, we are sending you attached our blueprint B-216 showing construction of expansion joint, which we believe will be of benefit to you. We realize these expansion joints are a great deal larger than size desired they have been put into practical use and we believe with moderate alterations the above can be made to suit your conditions to a nicety.

Hoping this information will be of value to you, we remain.

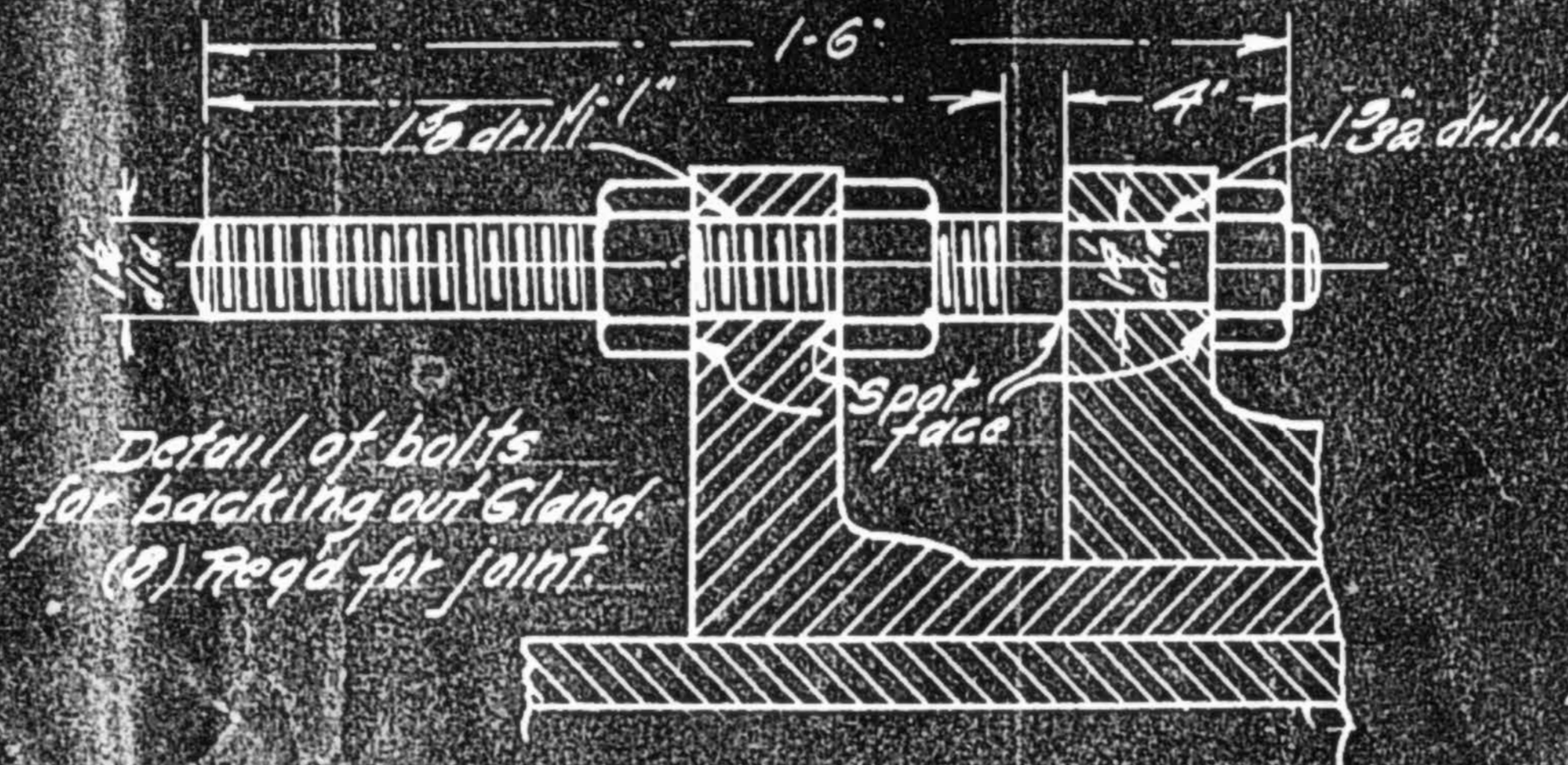
Yours truly,

WESTERN PIPE & STEEL CO. OF CAL.

By

H. D. Luckenbach

HBL-S



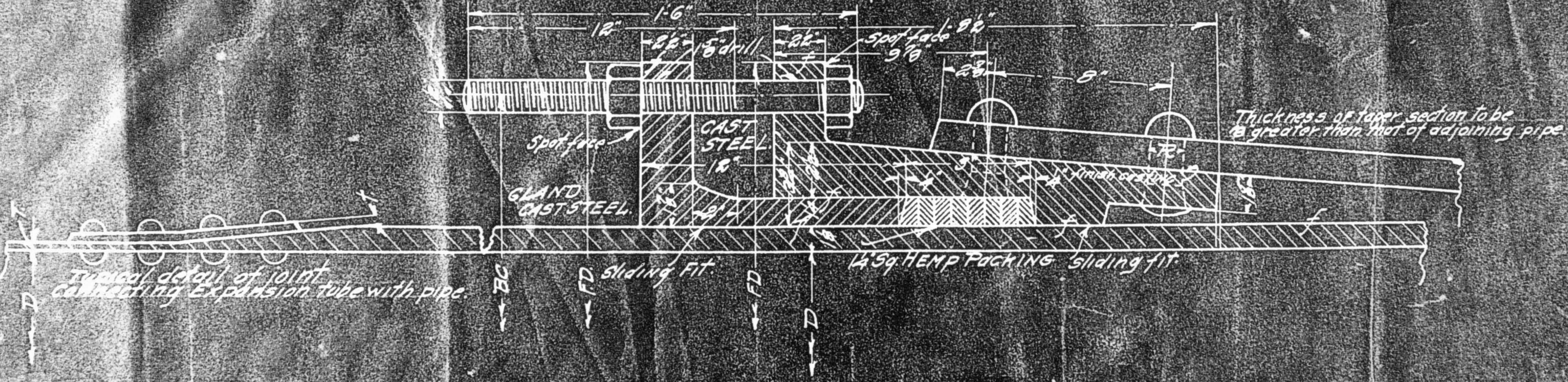
DIMENSION TABLE FOR PENSTOCK EXPANSION JOINT

JOINT Number	D	T	t	F.D.	B.C.	No. of Bolts	R	P
1	7.0	38	38	8.5	8.2	40	70	A
2	6.0	36	36	7.5	7.2	40	1	A
3	6.0	34	34	7.5	7.2	40	136	54
4	6.0	36	36	7.5	7.2	40	136	54
5	5.6	36	36	6.11	6.8	40	12	6

FOR SIPHON EXPANSION JOINT

D	T	t	F.D.	B.C.	No. of Bolts	R	P
9.6	38	38	10.11	10.8	48	70	A

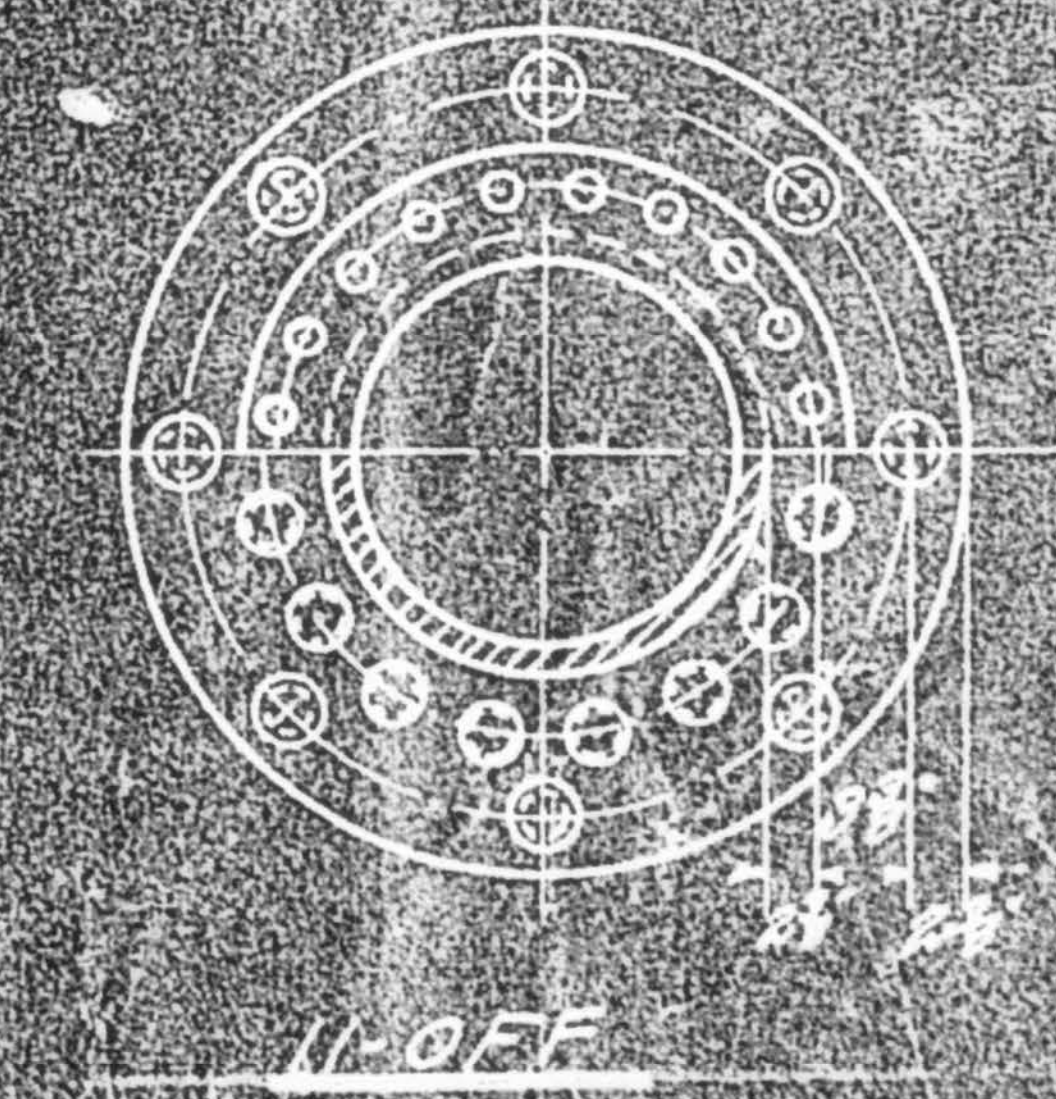
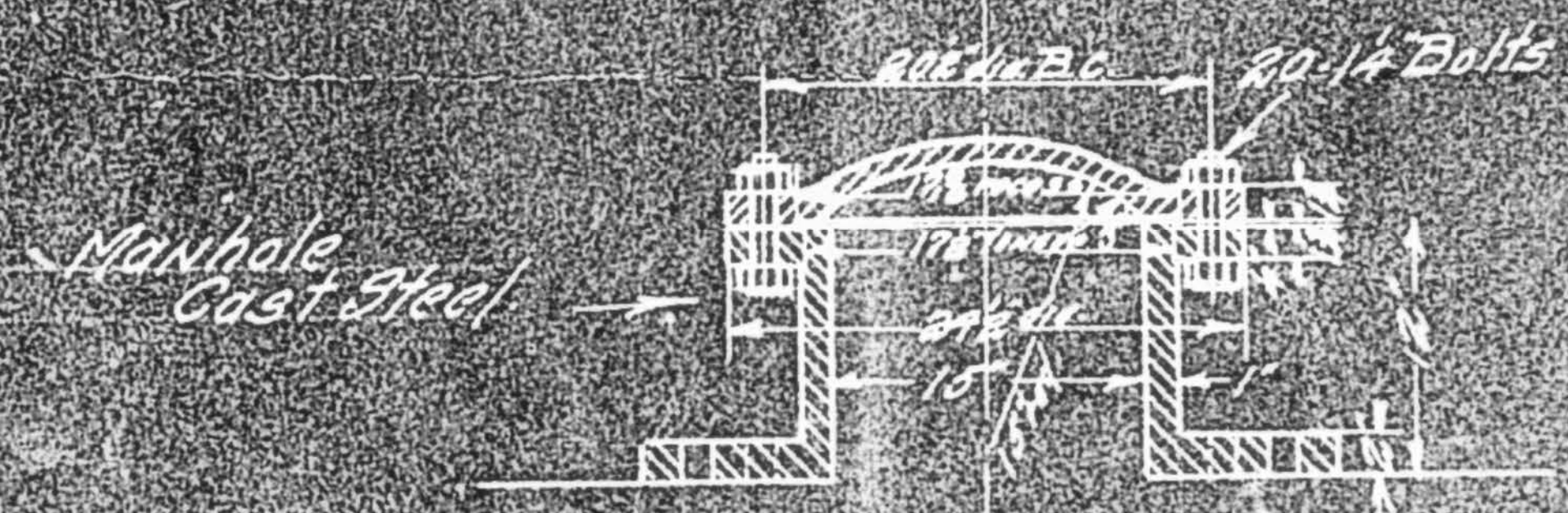
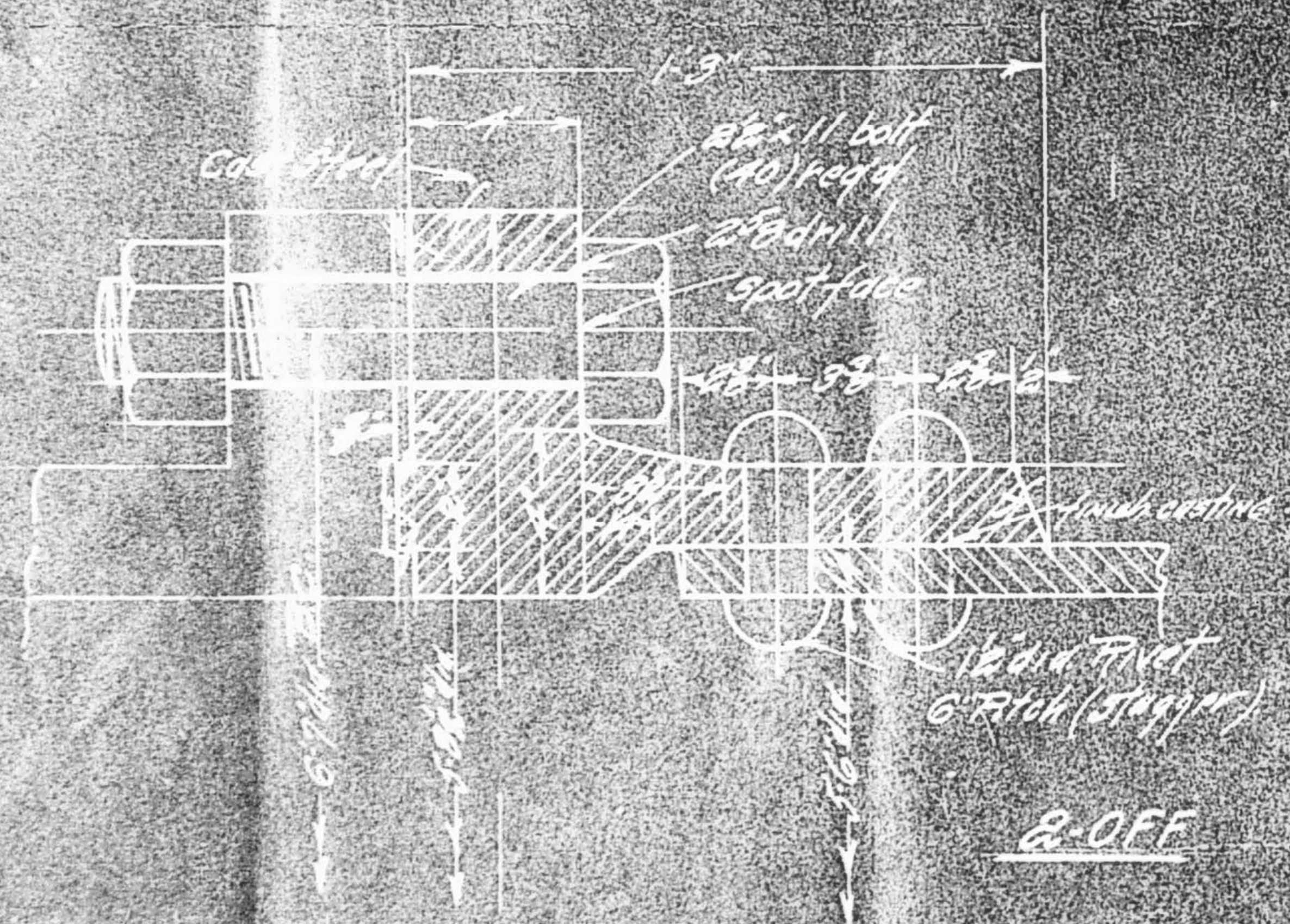
1-OFF.



DETAIL OF EXPANSION JOINT SECTION.

2000 B.C. on 1 1/2 Bolts

DETAIL OF EXPANSION JOINT SECTION.



WESTERN PIPE AND STEEL CO.

January 2, 1920.

Mr. F. W. Evans,
c/o Western Pipe & Steel Company,
1758-64 North Spring Street,
Los Angeles, California.

Dear Sir:--

Sometime ago you called at our office requesting data on our pipe line from Del Mar to La Jolla, stating that you desired to submit a bid on the high head pipe and pump line. So far, I have heard nothing from you and if you desire to submit figures, it will be necessary for you to have them in my office not later than Monday, January 5th.

Yours truly,

THK:K

Engineer.

SAN FRANCISCO
TAFT
BAKERSFIELD

CABLE ADDRESS
WESTPIPE
WESTERN UNION CODE

FRESNO
STOCKTON
SACRAMENTO

WESTERN PIPE & STEEL COMPANY

FACTORIES

OF CALIFORNIA

RICHMOND

TAFT

LOS ANGELES

~~Los Angeles, Cal.~~ January 2, 1920.

Mr. Thomas H. King, Engineer,
Ed Fletcher Co.,
San Diego, California.

Dear Sir:--

We have your favor of the 2nd calling attention to fact you have not yet received bid from us on pipe line from Del Mar to La Jolla. By way of explanation, desire to say we have been working more or less in the dark, not having complete profile.

On basis information given Mr. Evans, we figure on 18" pump line to take care of heads up to 300 feet, you will need pipe 14 to 6 gauge, upon which we quote prices as follows:

18" #14	-	\$ 2.05	per ft.
18" #12	-	2.70	" "
18" #10	-	3.45	" "
18" #8	-	4.30	" "
18" 3/16	-	4.75	" "
18" #6	-	5.10	" "

On 16" line requiring heads 200 to 400 feet, you will require pipe ranging in gauges #12 to #5, upon which we quote prices as follows:

16" #12	-	\$ 2.40	per ft.
16" #10	-	3.00	" "
16" #8	-	3.98	" "
16" 3/16	-	4.75	" "
16" #6	-	4.75	" "
16" #5	-	5.20	" "

Above prices are for pipe freight paid, and laid in trench that you prepare, it being understood your company will do the hauling and distributing of pipe along the trench, dig the trench and take care of back filling.

As to deliveries, while we no doubt can complete within 60 to 70 days after receipt of steel, we are not in position today to give you any guarantee as to when mill could deliver us steel at Los Angeles. Also, please be advised prices are subject to present market price, upon which our figures are based - therefore, are for immediate acceptance.

Very truly yours,

WESTERN PIPE & STEEL CO. OF CAL.

By *W. B. J. J. J.*

MANAGER

WGT:AM

Ed Fletcher Papers

1870-1955

MSS.81

Box: 33 Folder: 19

General Correspondence - Western Pipe and Steel Company



Copyright: UC Regents

Use: This work is available from the UC San Diego Libraries. This digital copy of the work is intended to support research, teaching, and private study.

Constraints: This work is protected by the U.S. Copyright Law (Title 17, U.S.C.). Use of this work beyond that allowed by "fair use" requires written permission of the UC Regents. Permission may be obtained from the UC San Diego Libraries department having custody of the work (<http://libraries.ucsd.edu/collections/mscl/>). Responsibility for obtaining permissions and any use and distribution of this work rests exclusively with the user and not the UC San Diego Libraries.