

**REPORT AND INDEX OF
UNDERWAY MARINE GEOPHYSICAL DATA**

KIWI EXPEDITION

LEG 6

(KIWI06RR)

R/V Revelle

(Issued April 1998)

Ports:

Lyttleton, New Zealand (20 October 1997)

to

Lyttleton, New Zealand (24 November 1997)

Chief Scientist:

Tim Cowles, Oregon State University

Robert Wilson, Resident Marine Technician

Marc Silver, Computer Technician

NoSeaBeam/UW Processor on board

**Post-Cruise Processing and Report Preparation by the
Geological Data Center, Scripps Institution of Oceanography
La Jolla, California 92093-0223**

NOTE: This is an index of underway geophysical data edited and processed after the completion of the cruise leg and is intended primarily for informal use within the institution. This document is not to be reproduced or distributed outside Scripps without prior approval of the chief scientist or the Geological Data Center, Scripps Institution of Oceanography, La Jolla, California 92093-0223

GDC Cruise I.D.# 276

**REPORT AND INDEX OF NAVIGATION
AND UNDERWAY GEOPHYSICAL DATA**

Processed by the Geological Data Center
Scripps Institution of Oceanography

Contents:

Index Chart - gives track of cruise leg, dates, ports, and mileage of each type of data collected.

Track Charts - annotated with dates and hour ticks.

Profiles - depth, magnetic and gravity free air anomaly vs. distance. (Sections of track with seismic reflection data have a wide black line along the bottom of the profile.)

Sample Index - list of begin/end times and positions of all underway records as well as samples and measurements from other disciplines collected on the leg.

NOTE: One or more of the underway data types may not be collected on a given leg. For information on the availability and reproduction costs of data in the following forms, contact S.M. Smith, Curator, Geological Data Center, Scripps Institution of Oceanography, La Jolla, California 92093-0223. Phone: (619)534-2752, FAX: (619)534-6500, Internet email: ssmith@ucsd.edu

1. Files via ftp or on 8mm (Exabyte) and 4mm (DAT) magnetic tape:
 - a) Separate time series ASCII files of navigation, single beam depth, gravity and magnetics.
 - b) Above data in a single merged ASCII file in the MGD77 Exchange Format.
 - c) SeaBeam depth data (binary, Sun byte order)
 - d) SeaBeam Sidescan data.

2. Microfilm (35 mm flowfilm) or hard copies of:
 - a) Underway watch log book.
 - b) SeaBeam vertical beam profile/Sidescan records.
 - c) 3.5 kHz and 12 kHz echosounder records.
 - d) Seismic reflection profiler records.

3. Navigation listing with times and positions of fixes and course and speed changes.

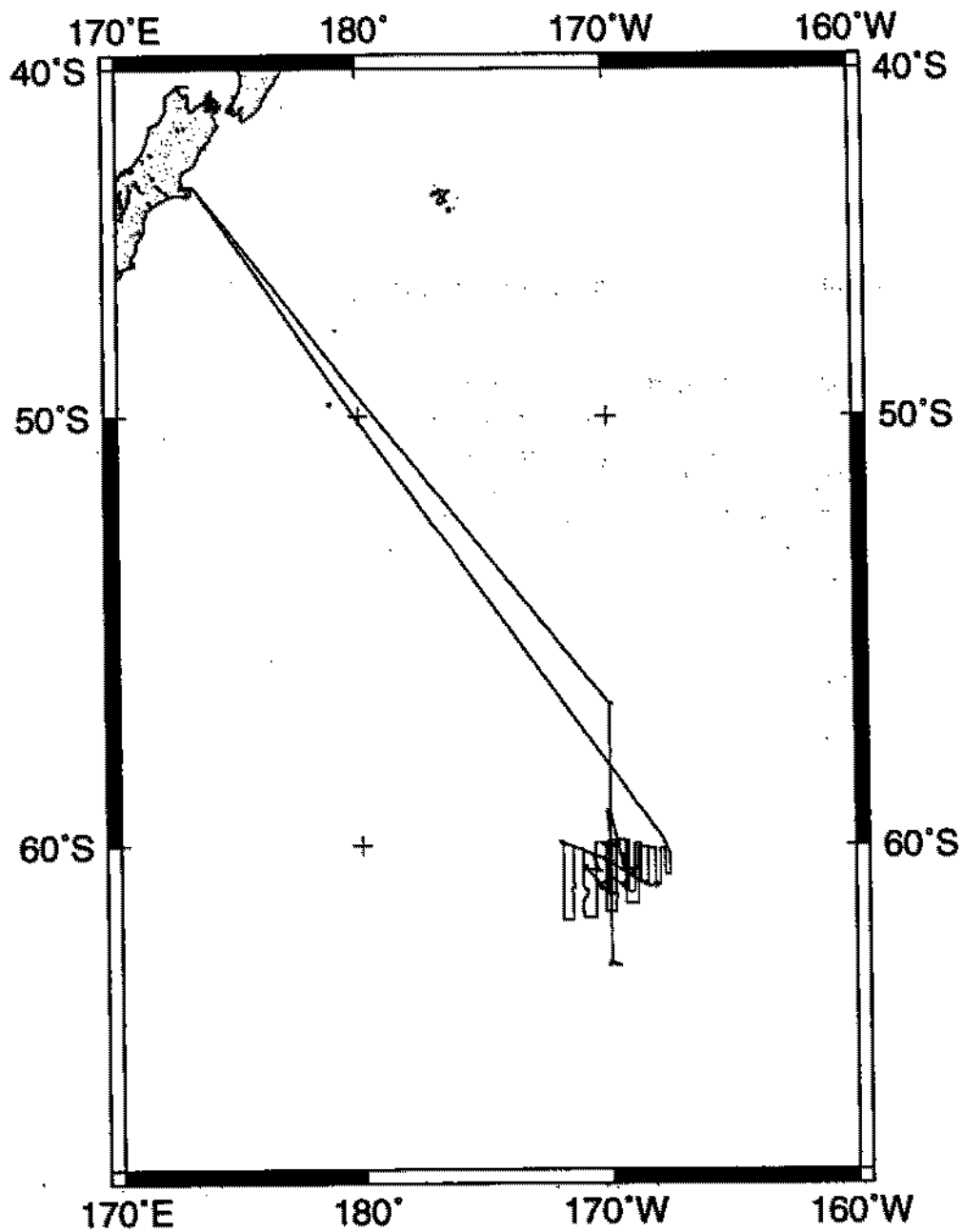
4. Custom plots in Mercator projection:
 - a) Track plots.
 - b) SeaBeam depth contour plots.
 - c) Depth, magnetic or gravity values printed or profiled along track.

Sea Beam Data Collected in Ancillary Mode

In the absence of funding for collecting multi-beam data on this leg, Sea Beam data were collected by SIO/STS in ancillary mode. In this mode of operation, no Hardware Technician or SB/Underway Processor were on board and the types of realtime records and post-processed data products are reduced from those available under the fully funded mode.

The Sea Beam data remain proprietary to the SIO Shipboard Technical Support Group, not the chief scientist.

May 1998



KIWI EXPEDITION LEG 6

CHIEF SCIENTIST: Tim Cowles, Oregon State University

PORTS: Lyttelton - Lyttelton, New Zealand

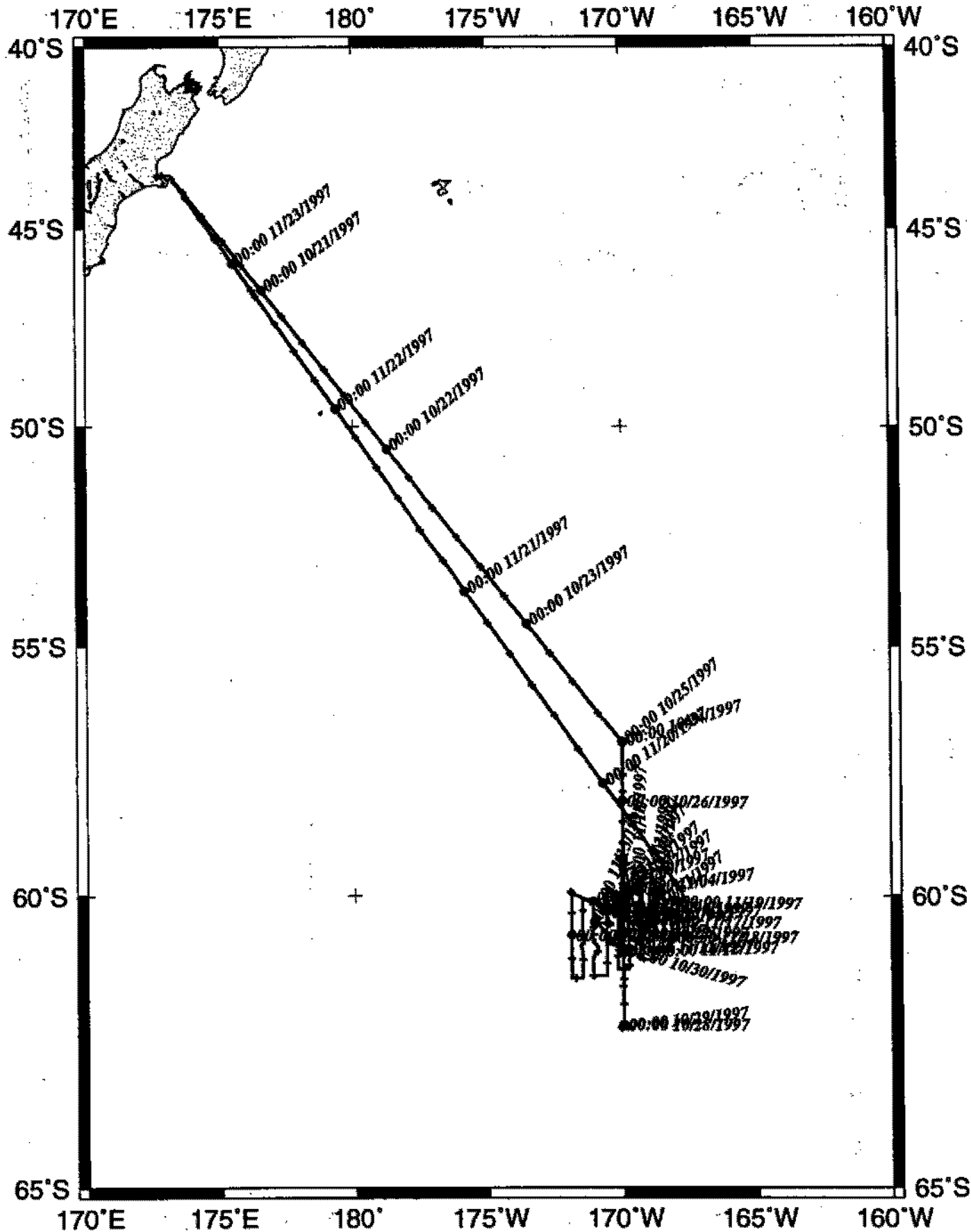
DATES: 20 October - 24 November 1997

SHIP: R/V Revelle

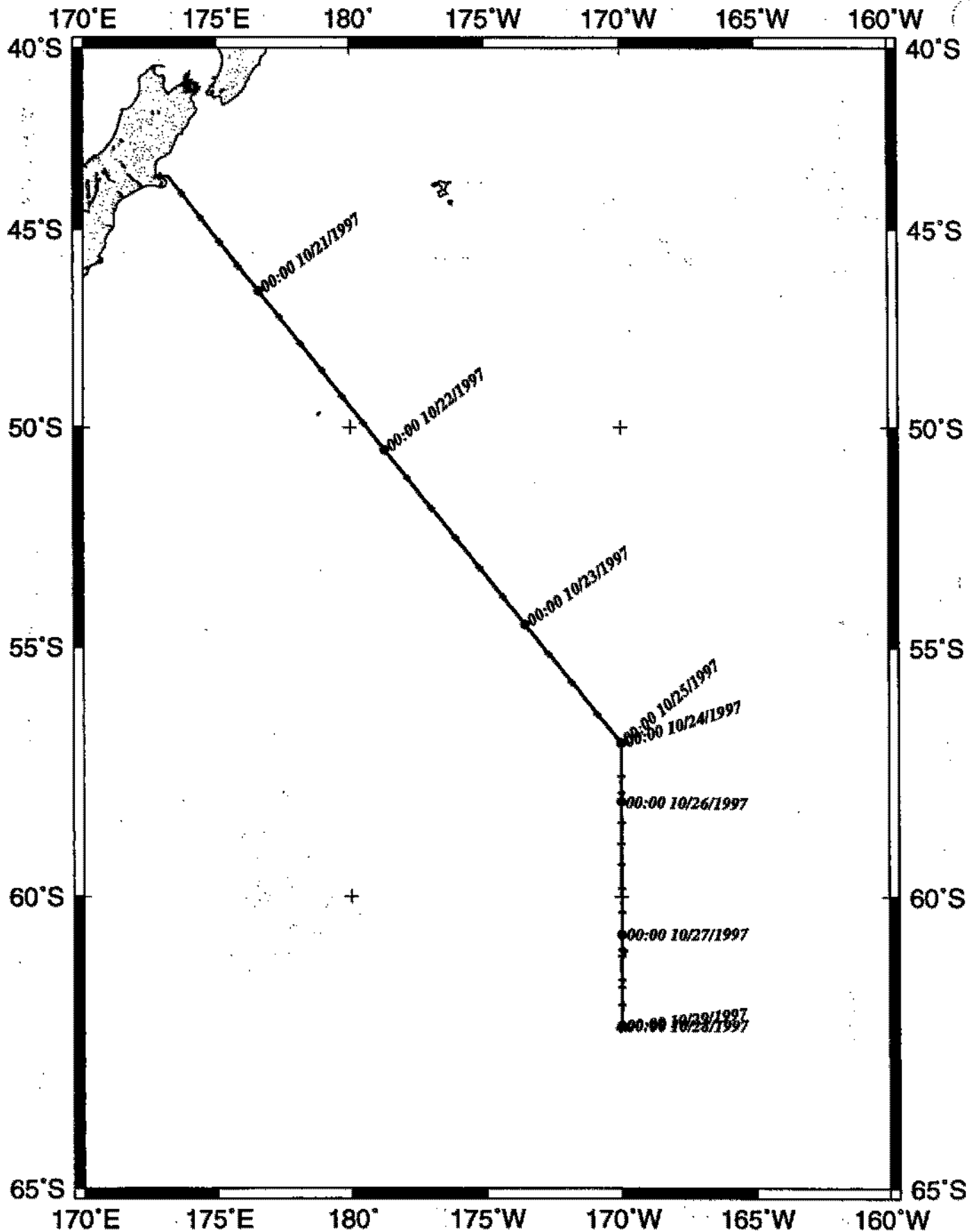
TOTAL MILEAGE OF UNDERWAY DATA COLLECTED

Cruise - 4900 miles	Magnetics - none collected
Bathymetry - 2125 miles	Seismic Reflection - none collected
Sea Beam - 2125 miles	Gravity - none collected

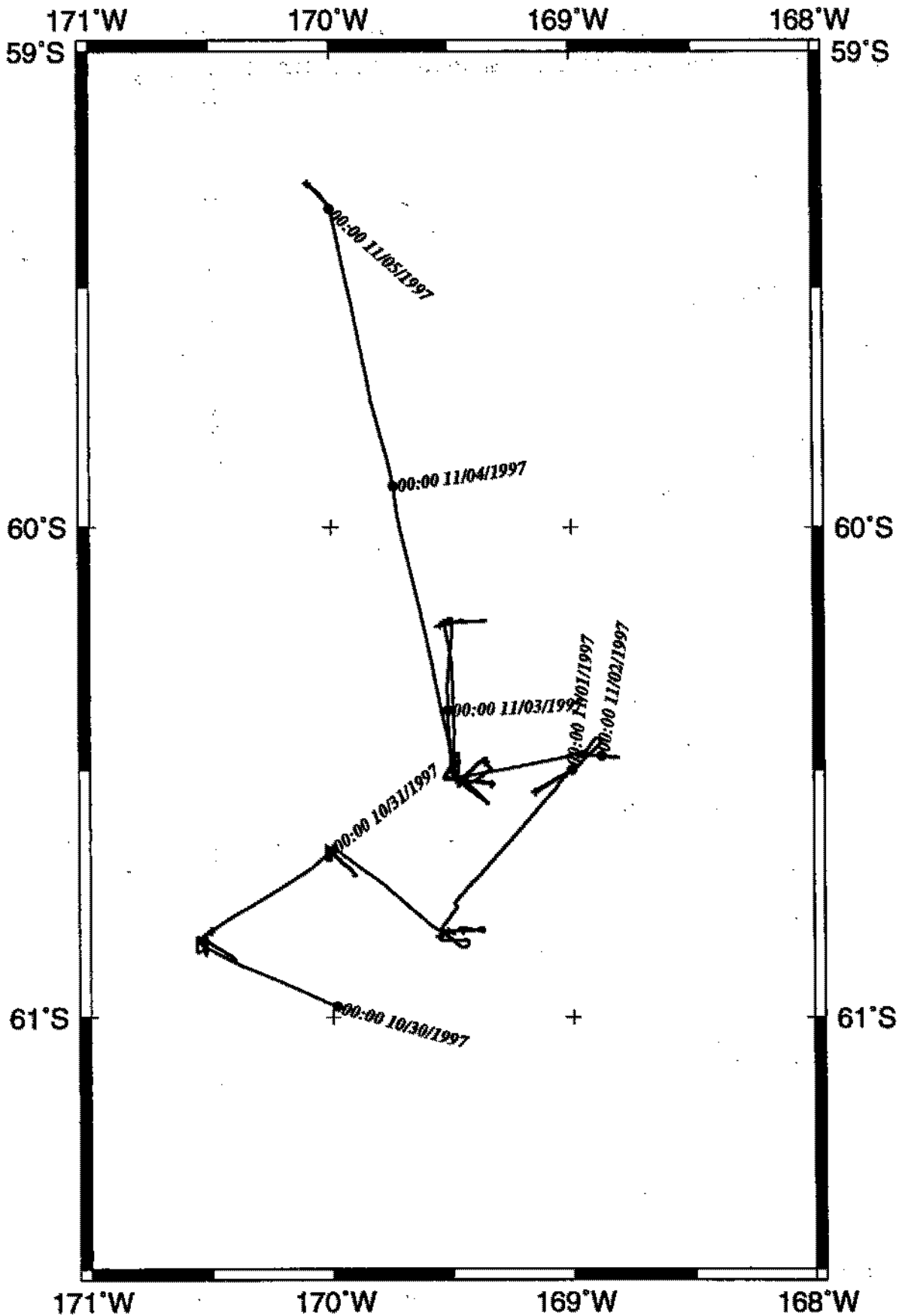
KIWI06RR Track



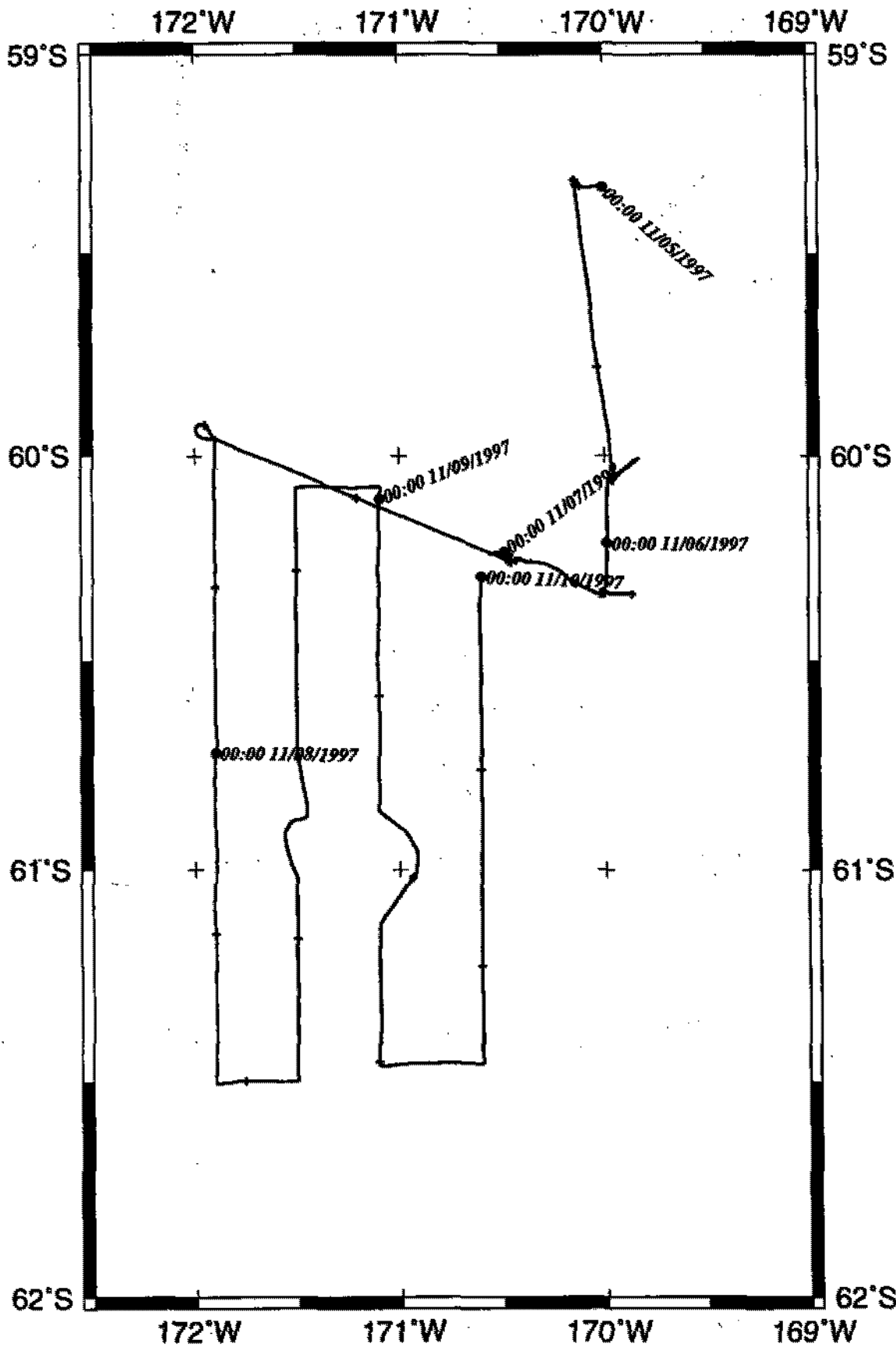
KIWI06RR Oct21-Oct29



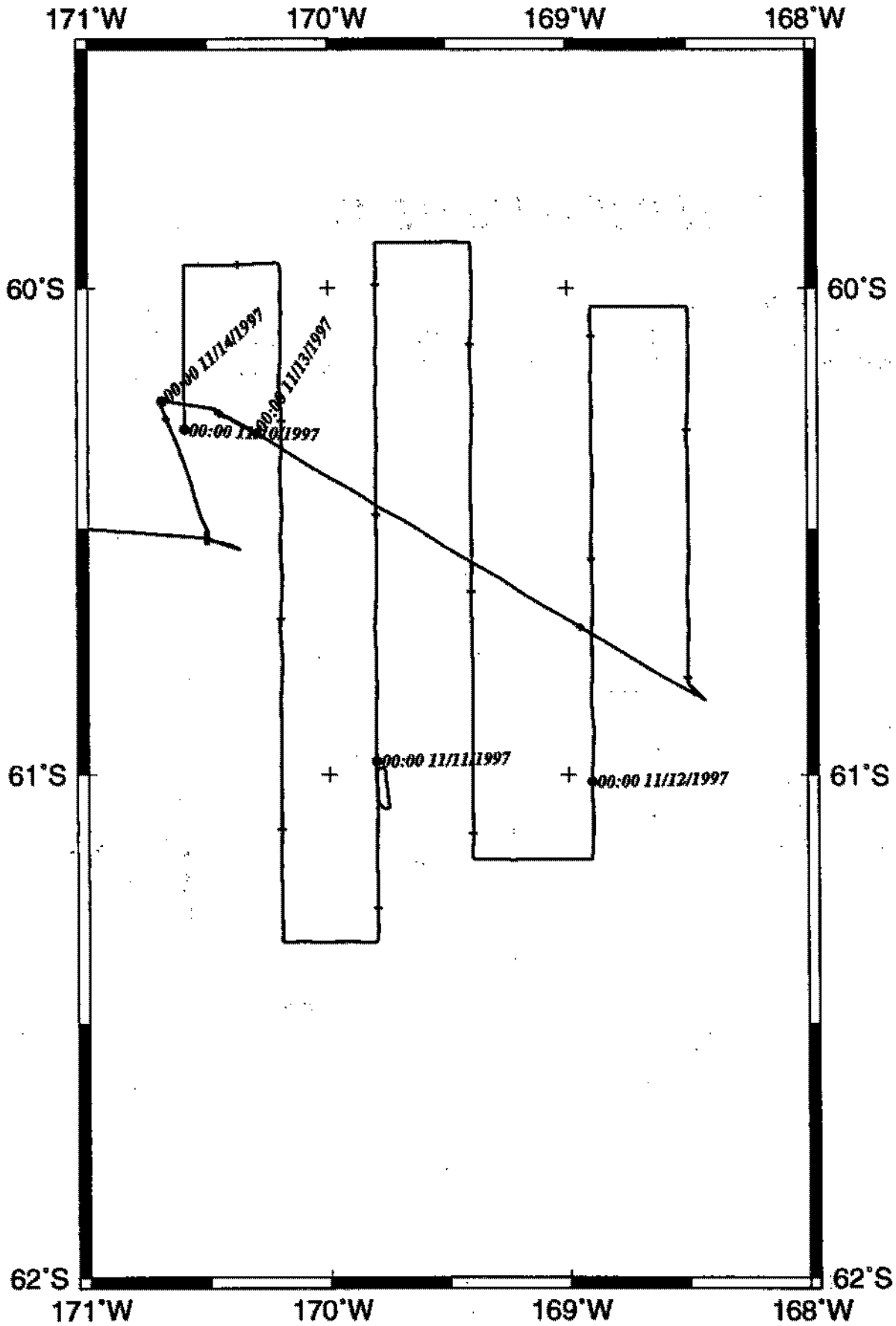
KIWI06RR Oct30-Nov04



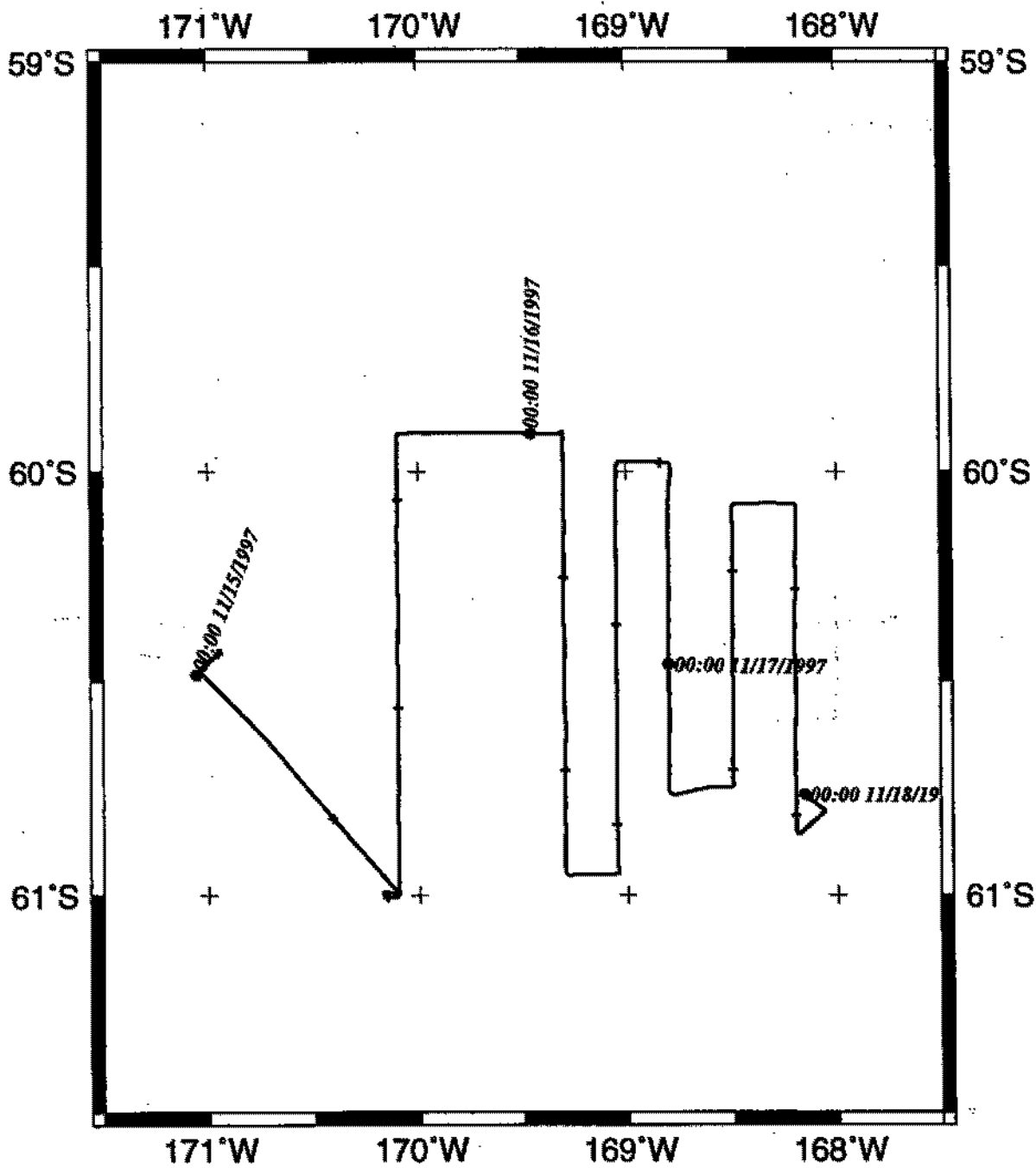
KIWI06RR Nov05-09



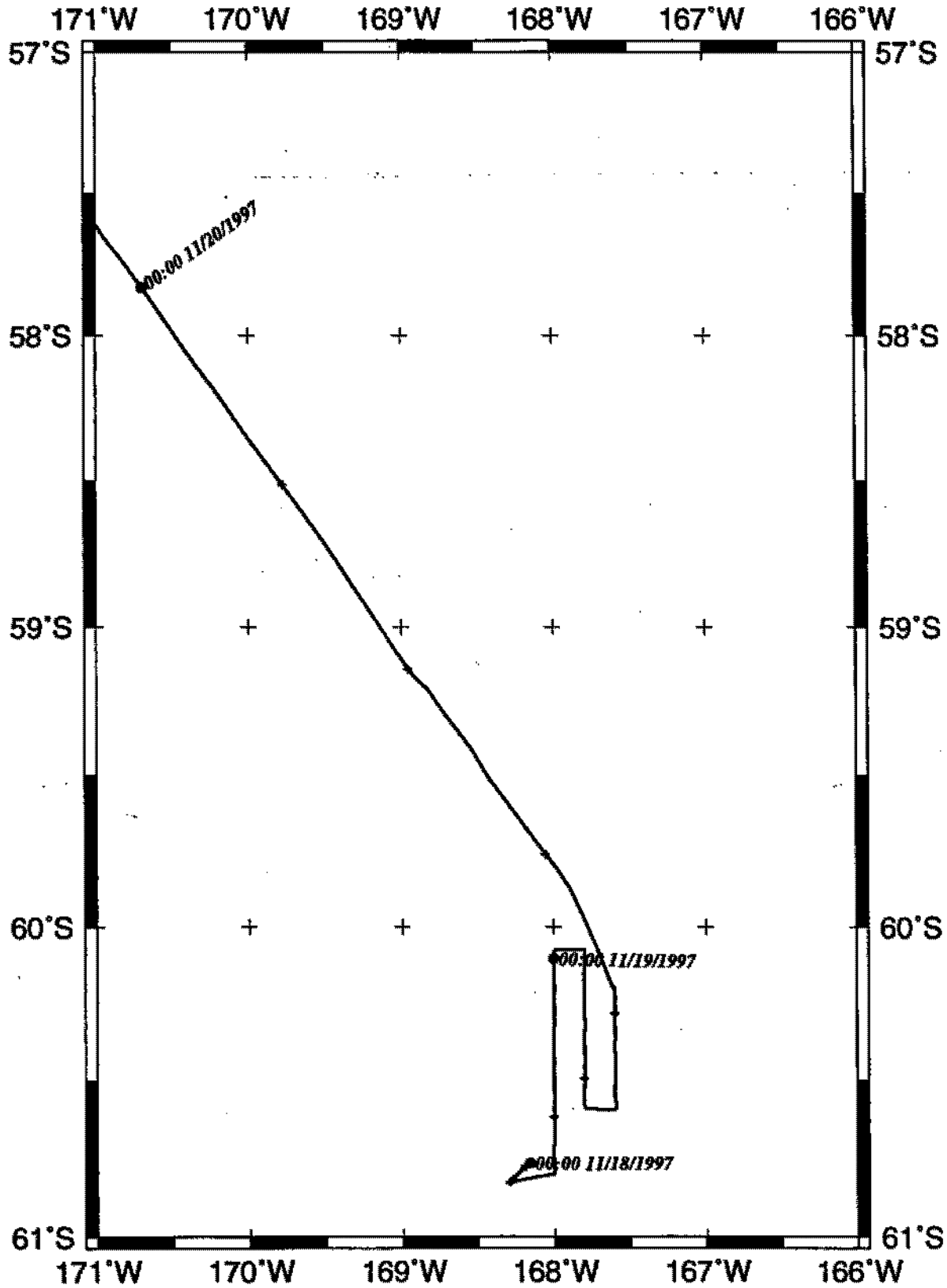
KIWI06RR Nov10-14

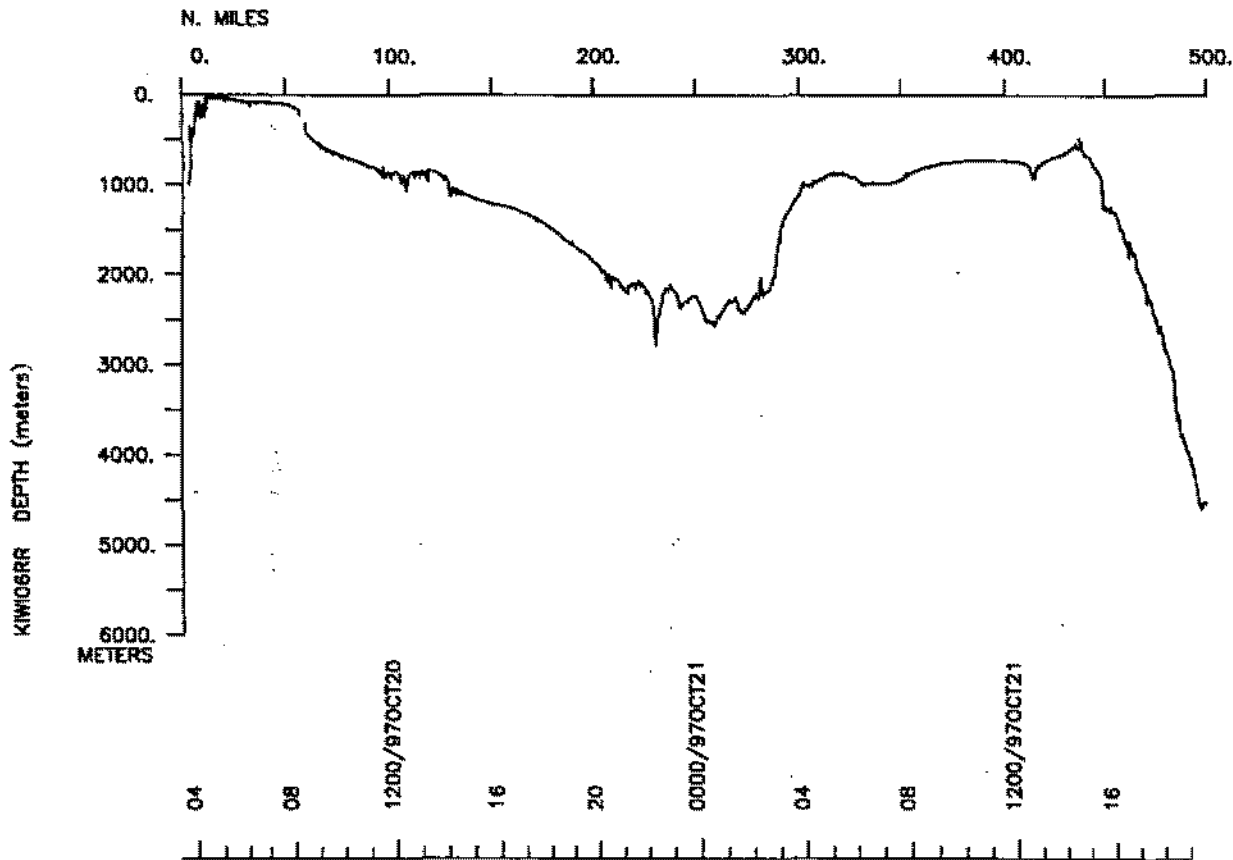
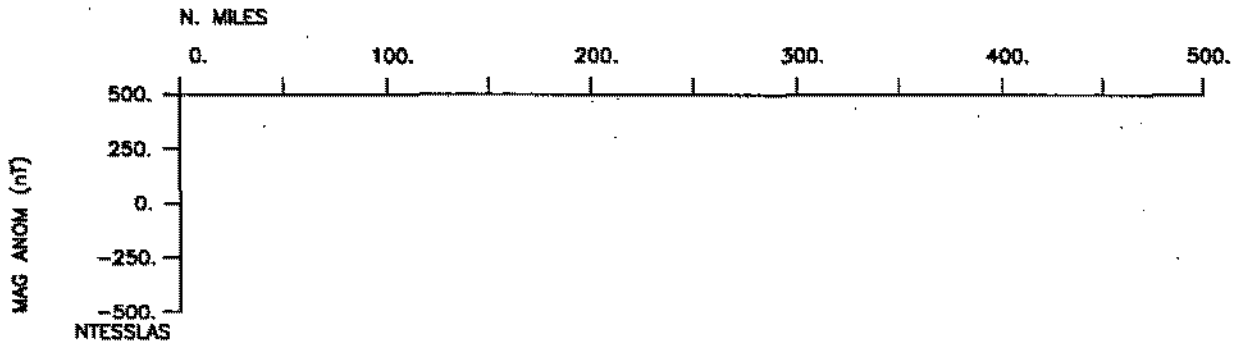
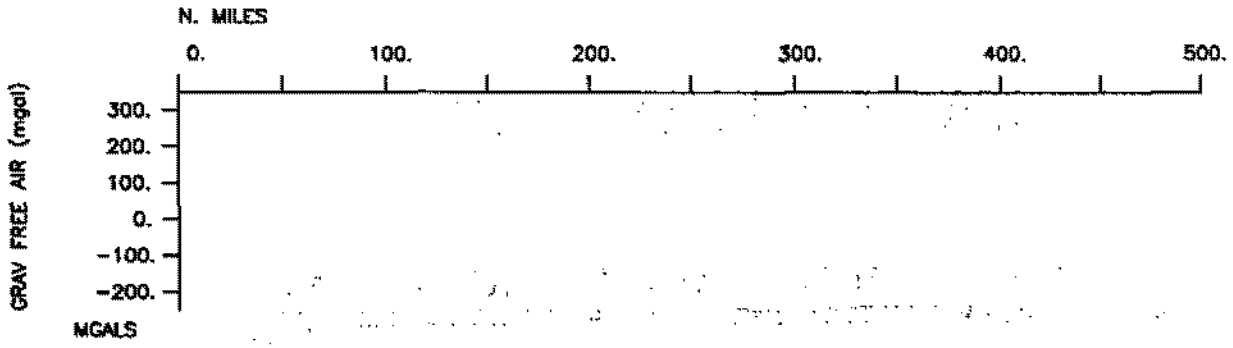


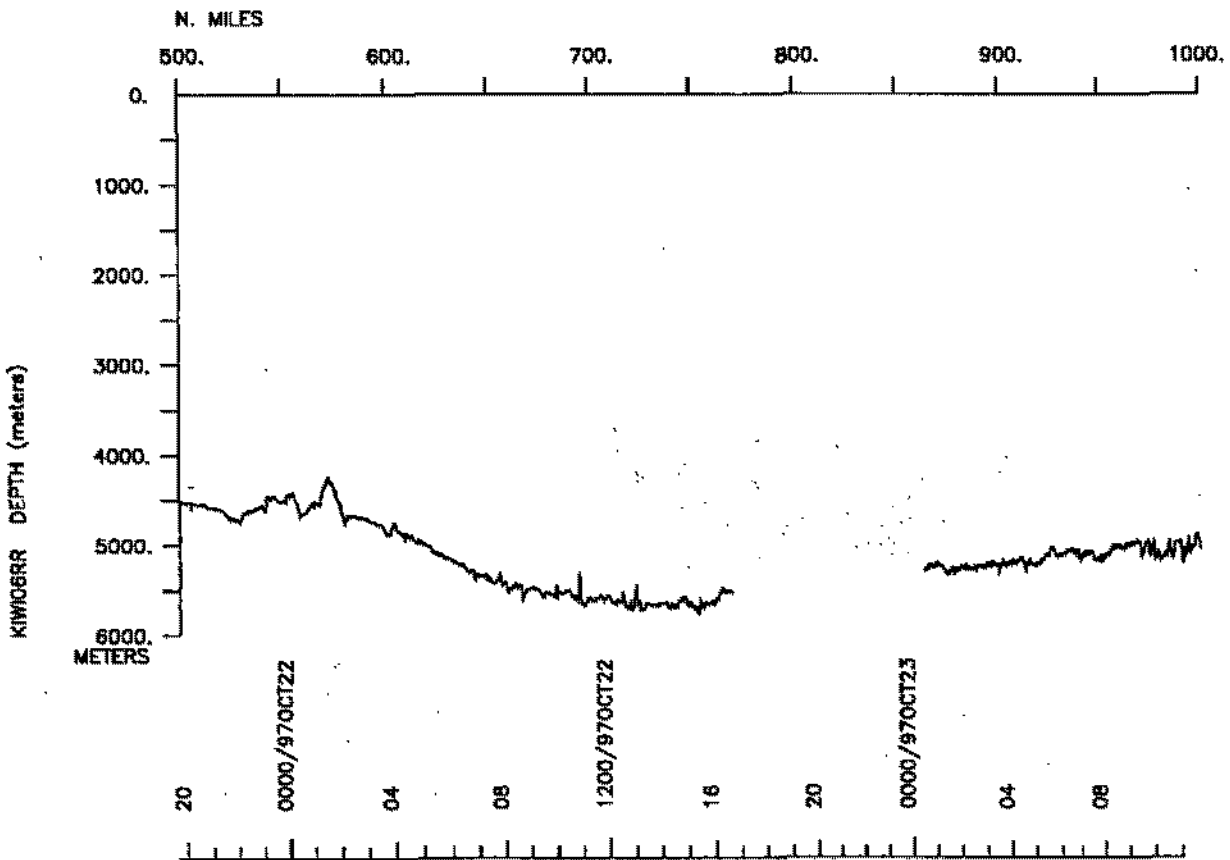
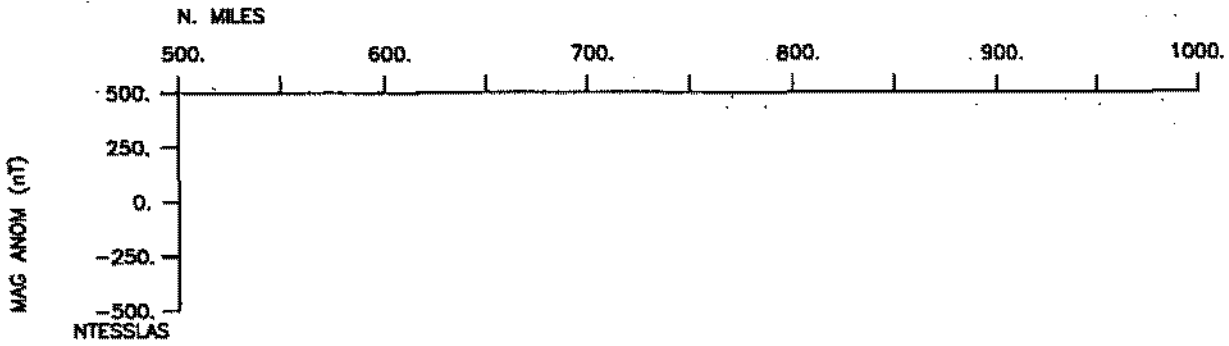
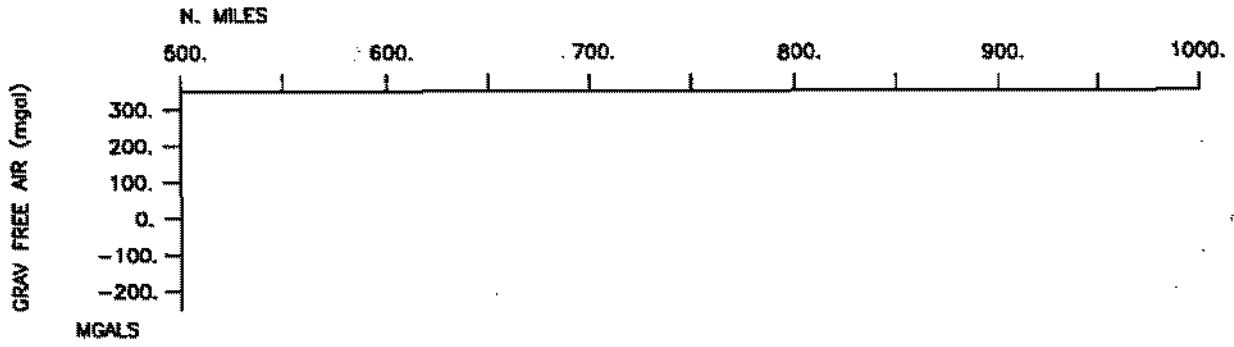
KIWI06RR Nov15.17

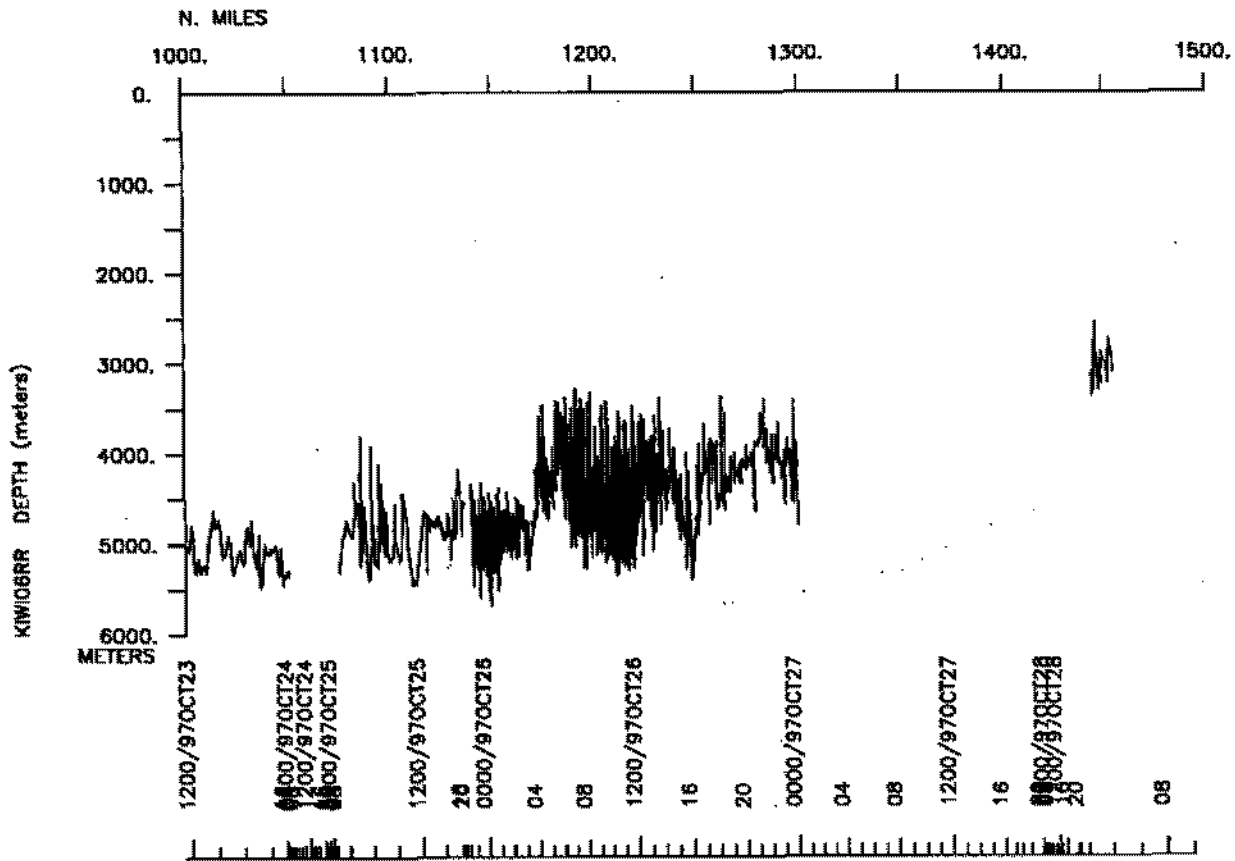
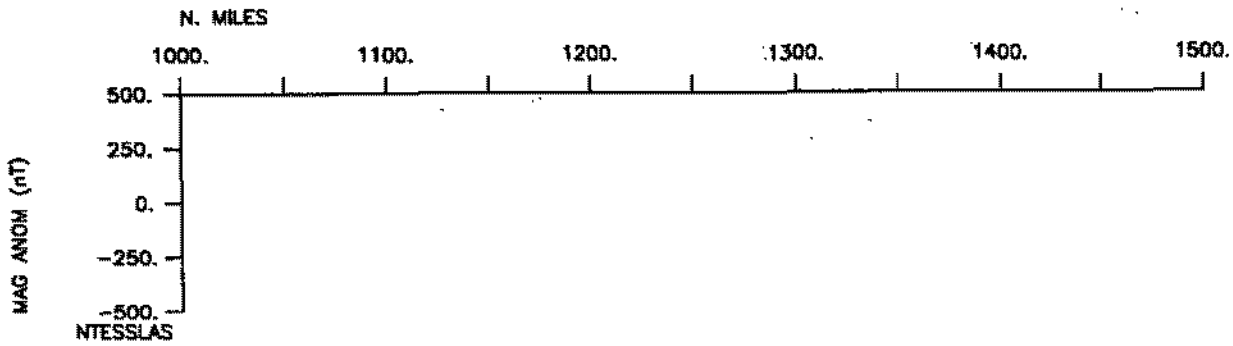
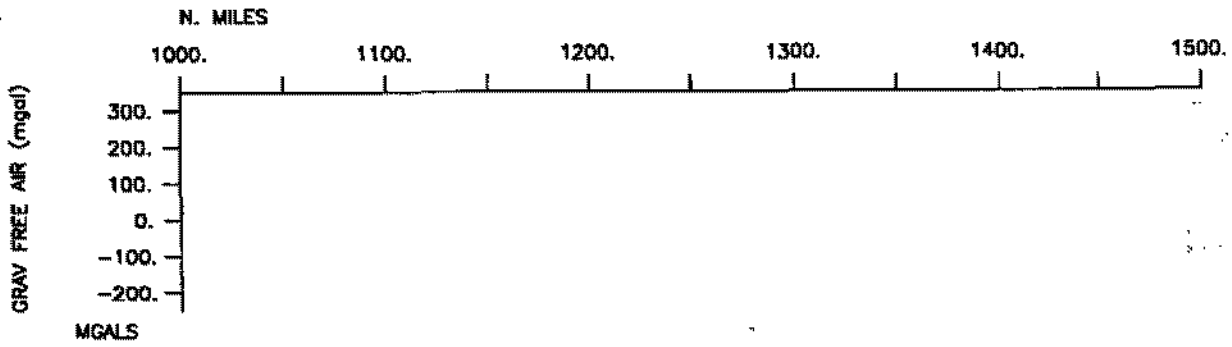


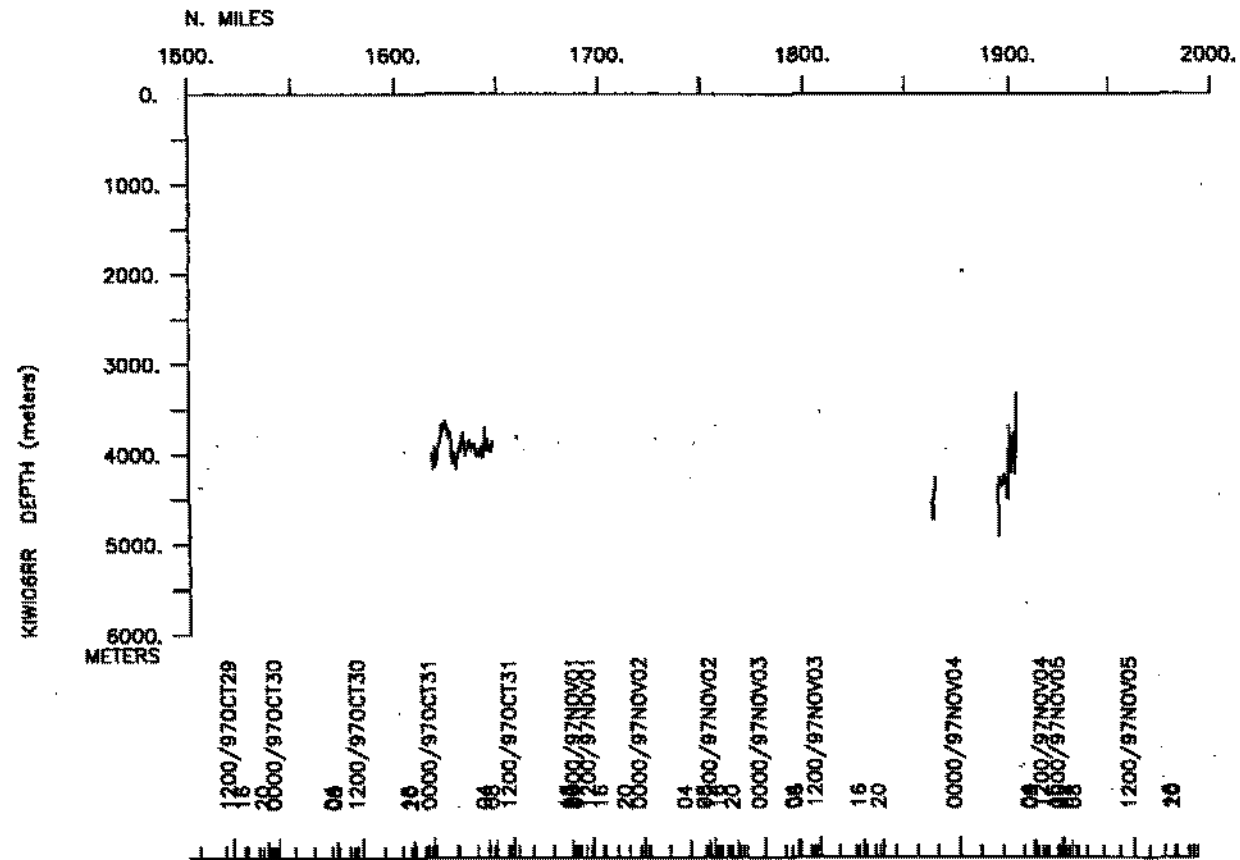
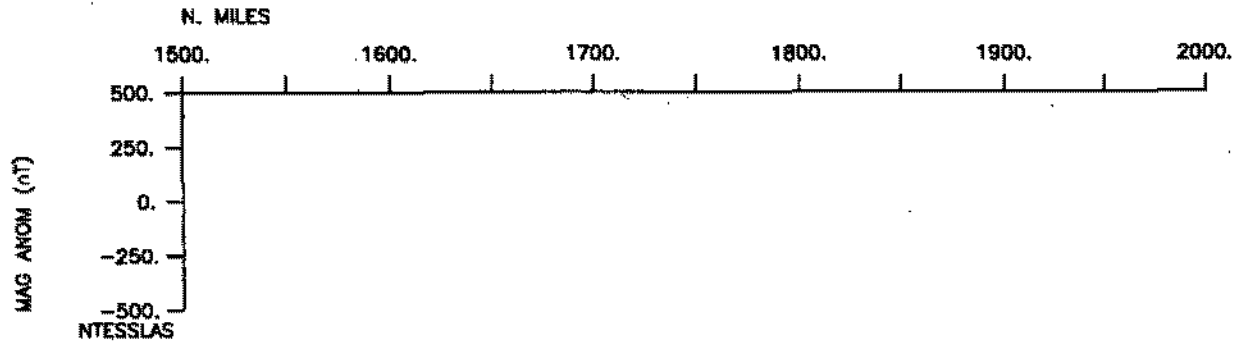
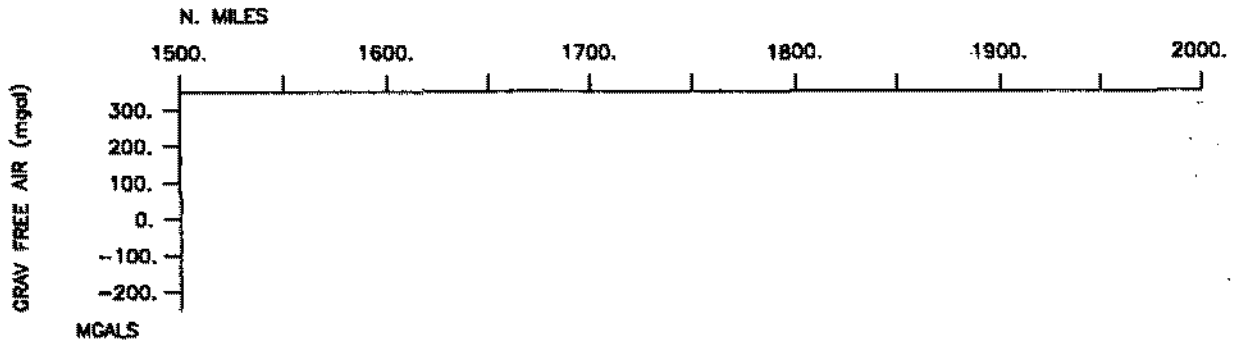
KIWI06RR Nov18-20

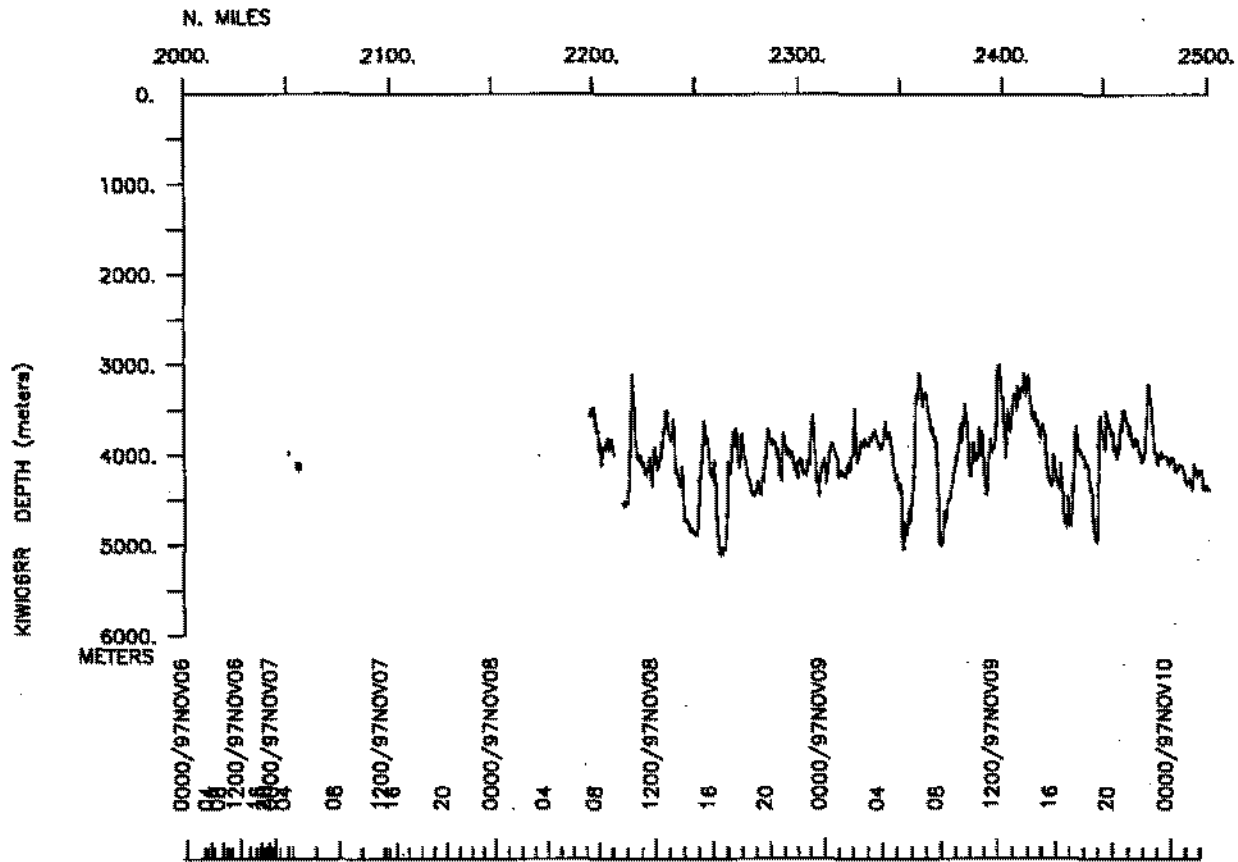
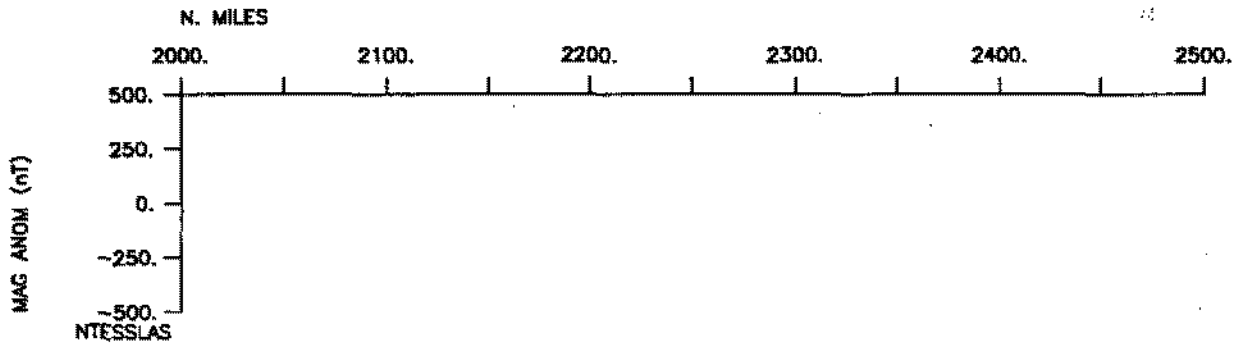
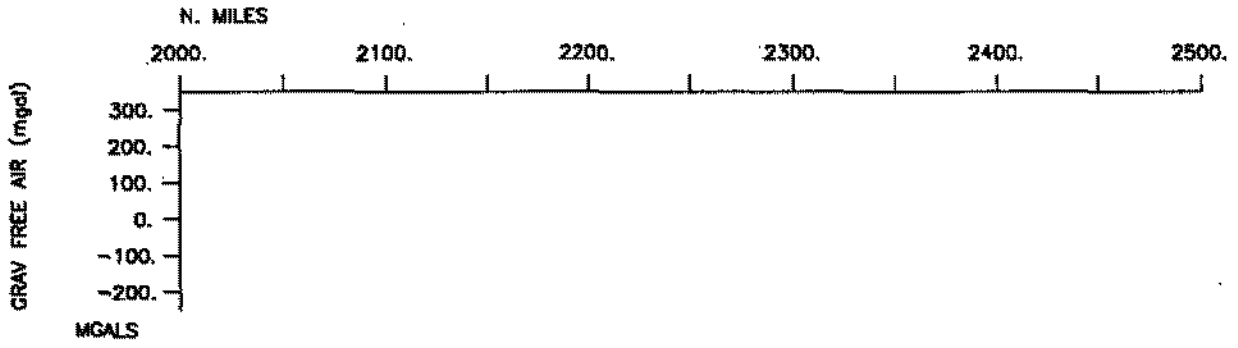


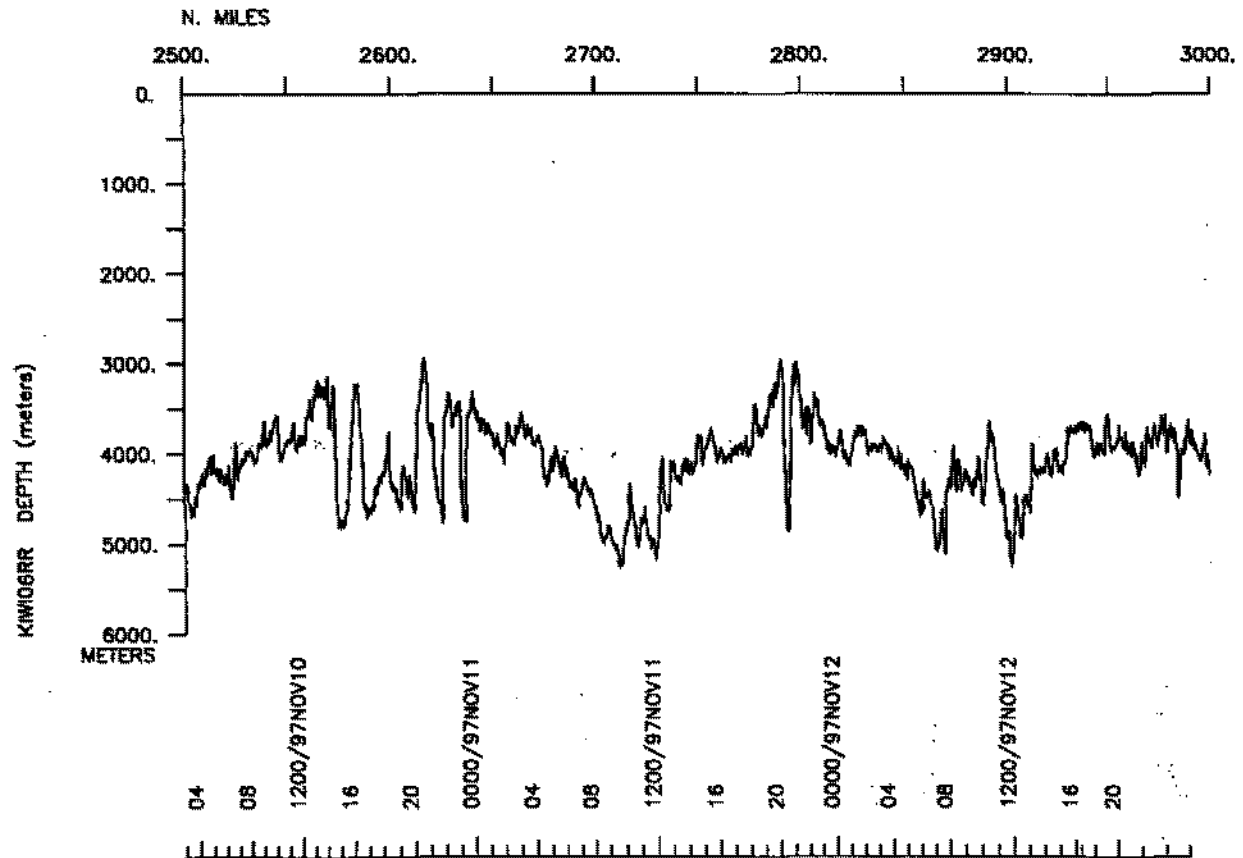
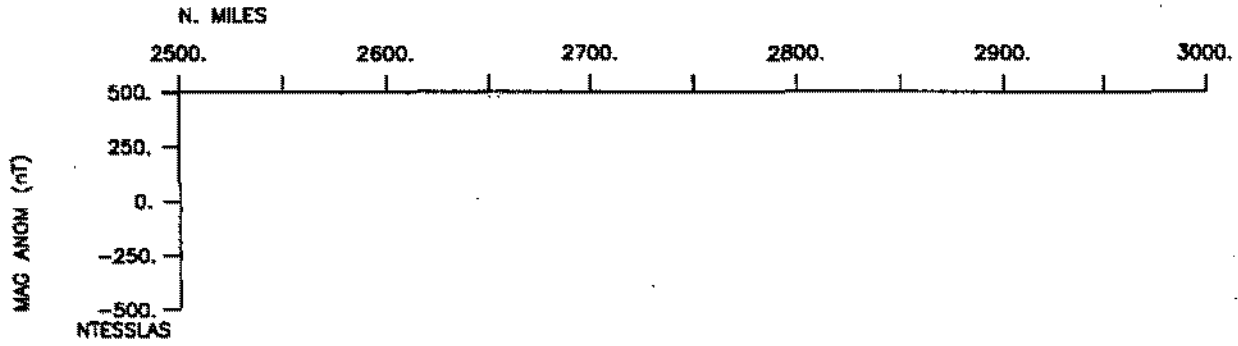


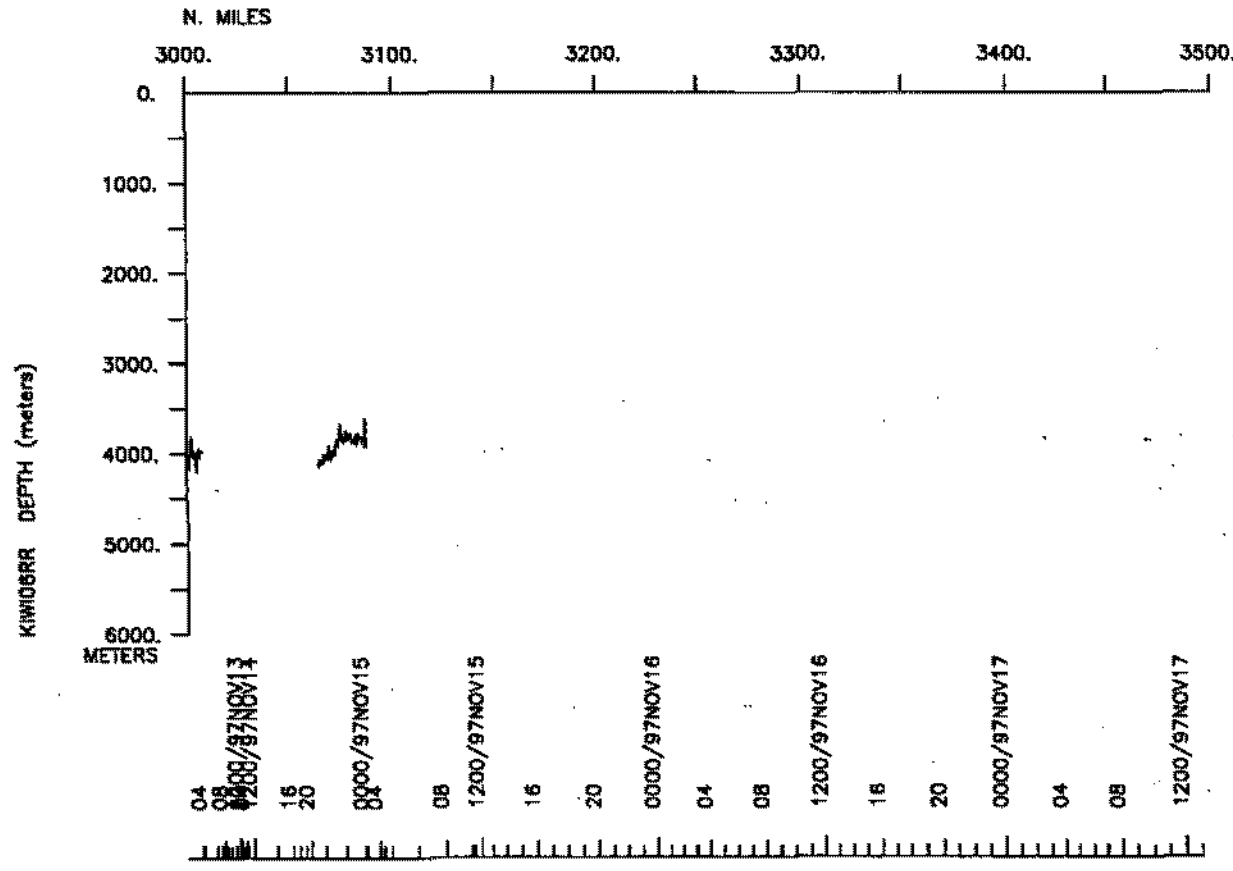
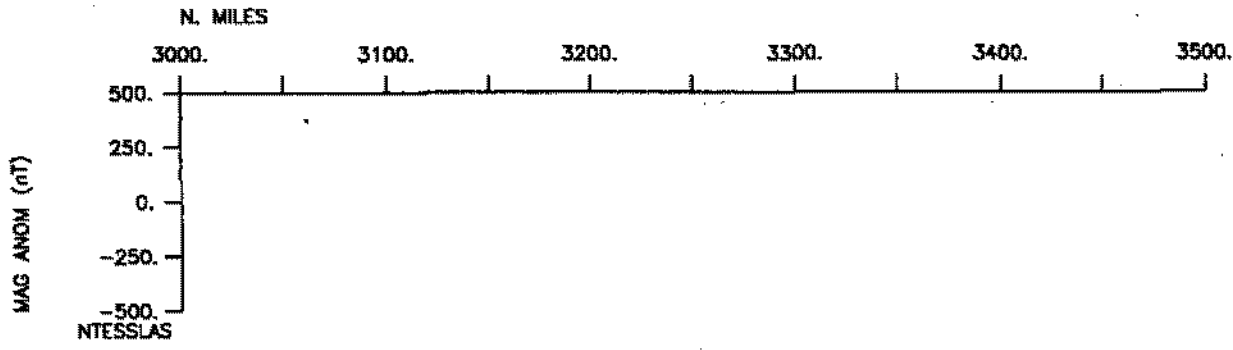
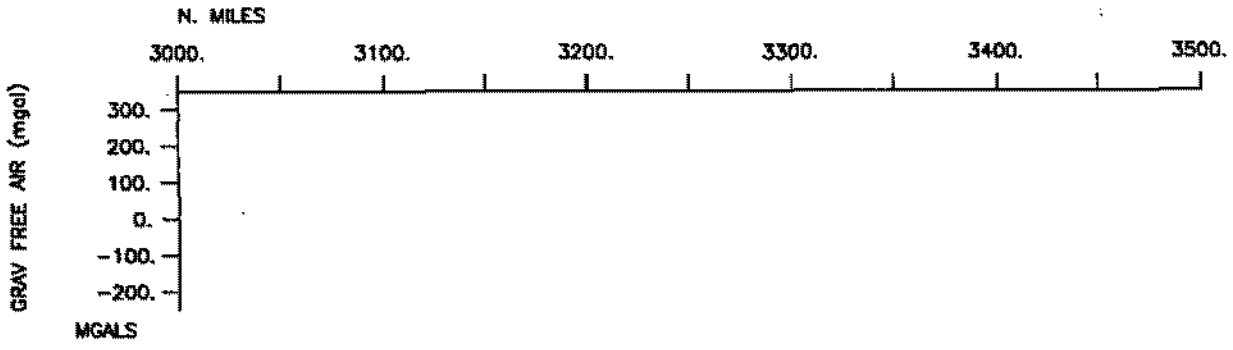


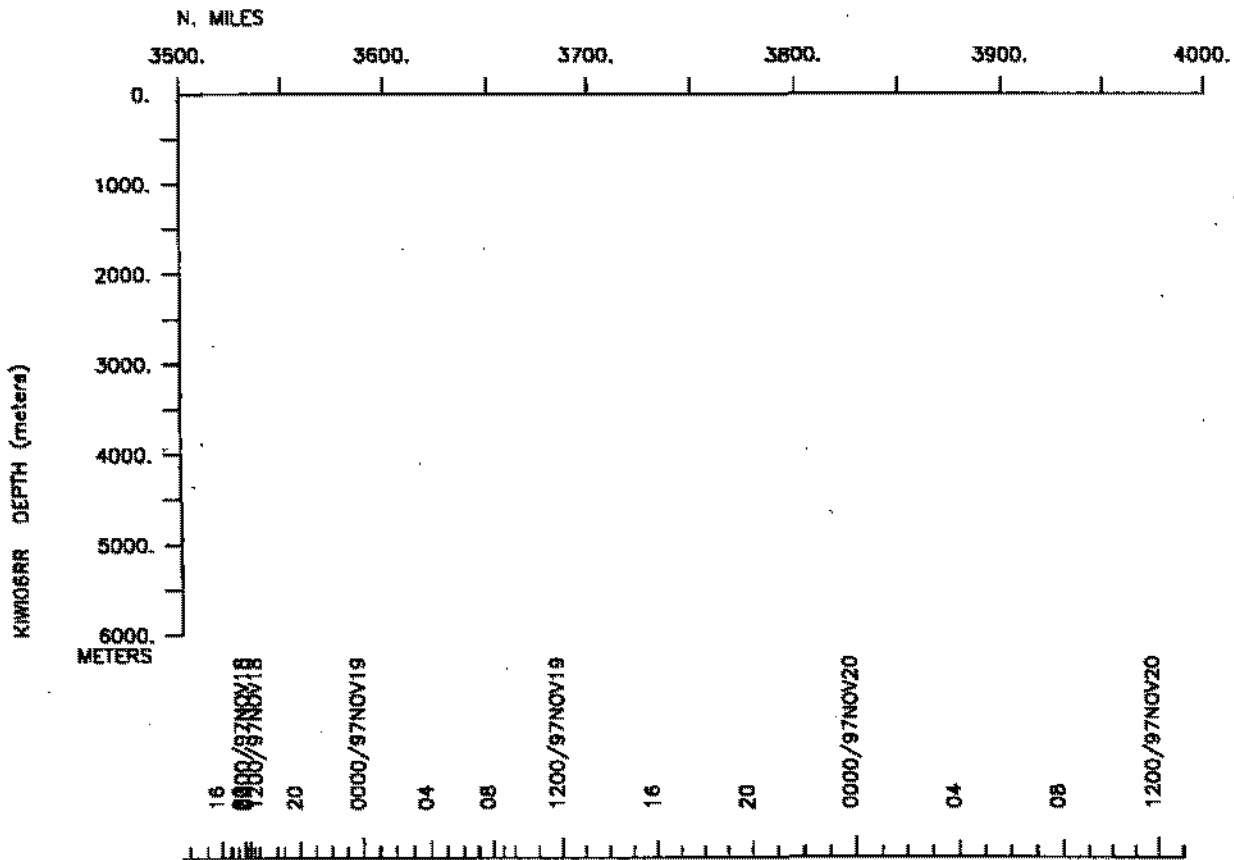
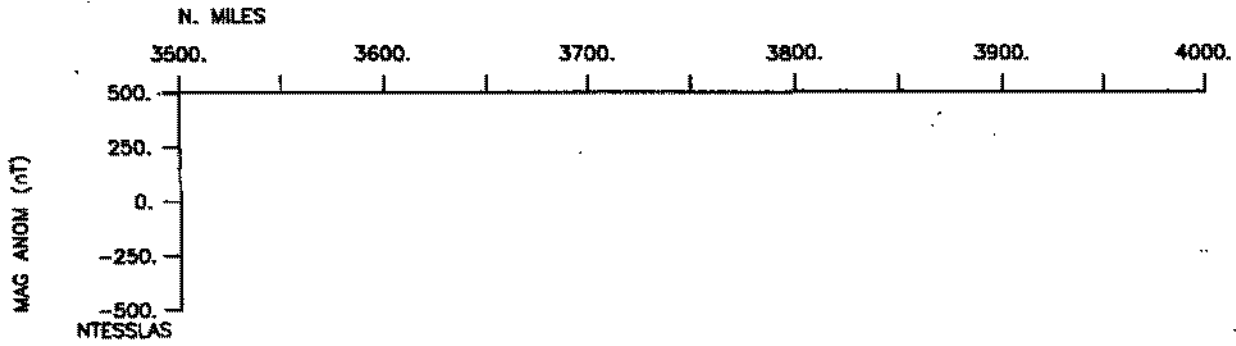
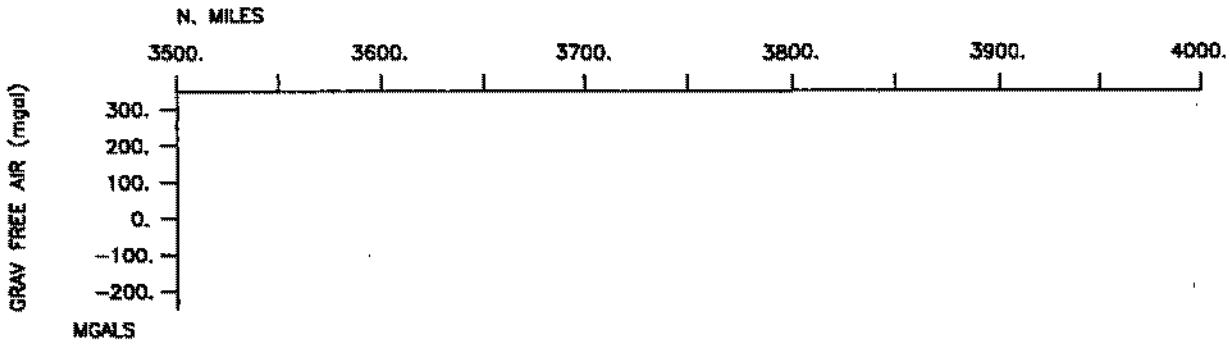


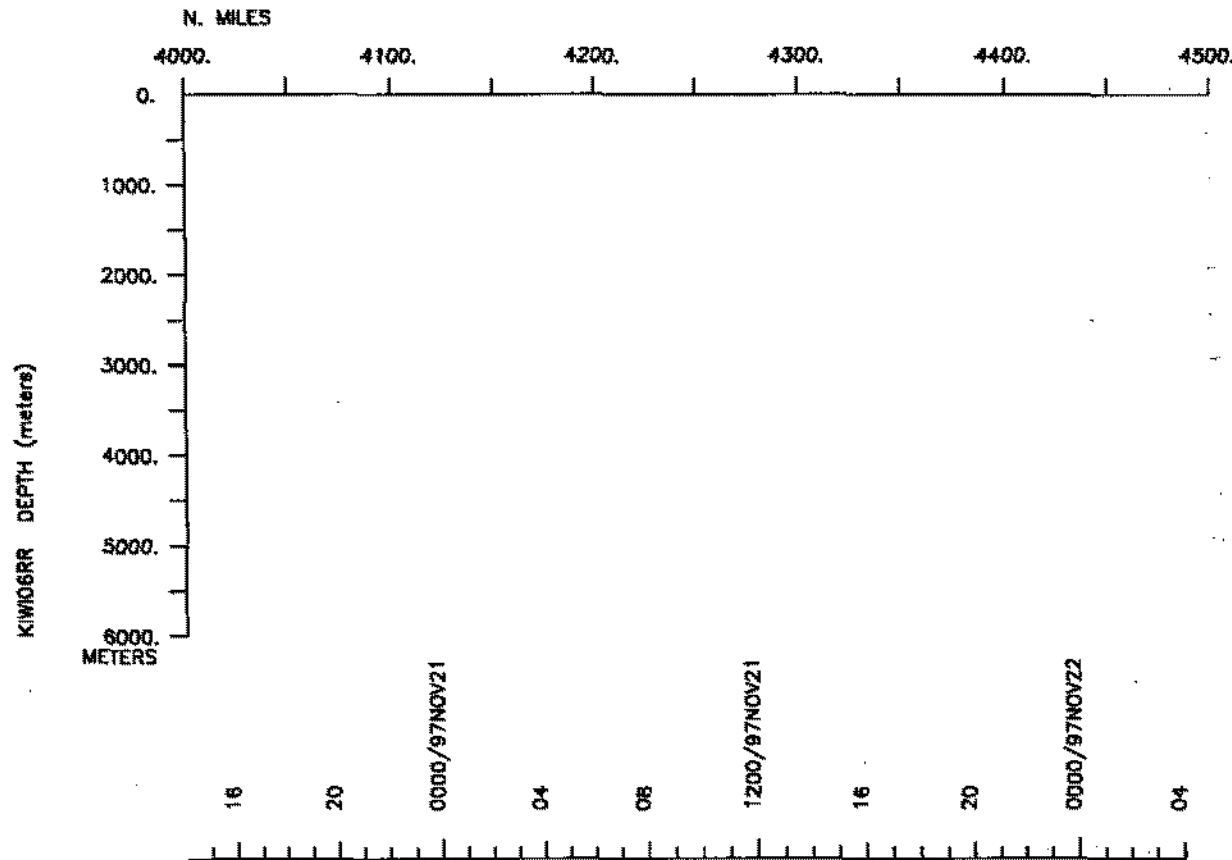
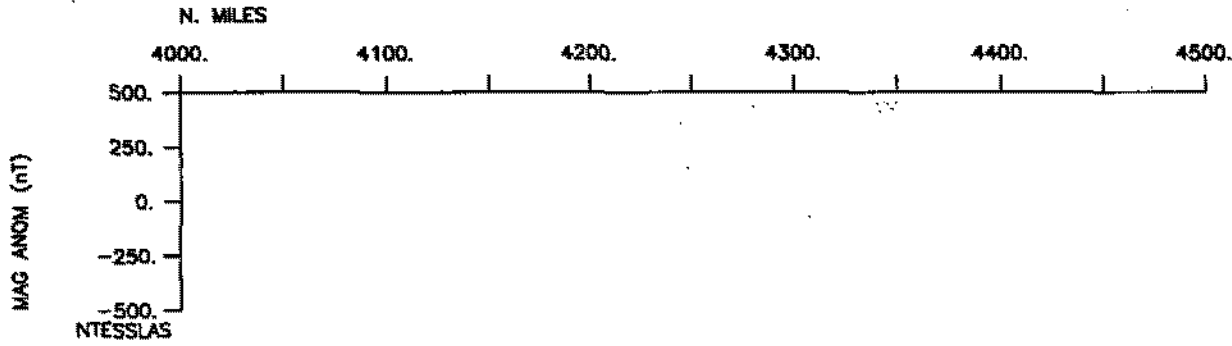
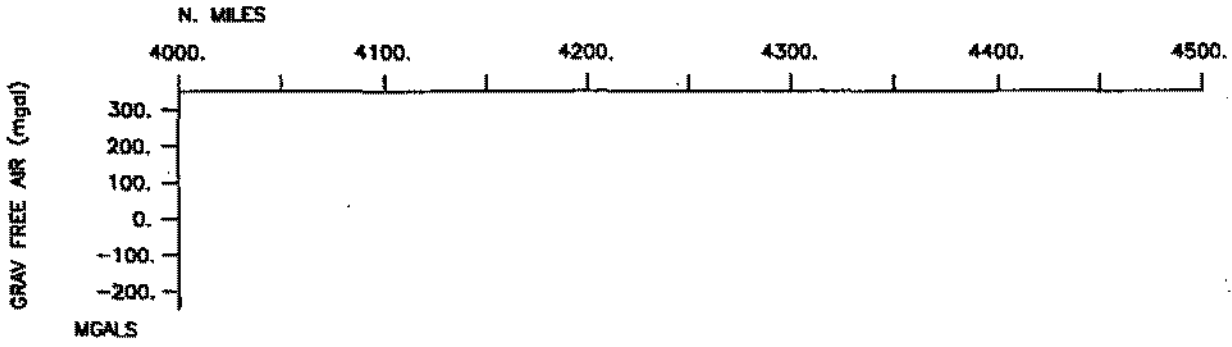




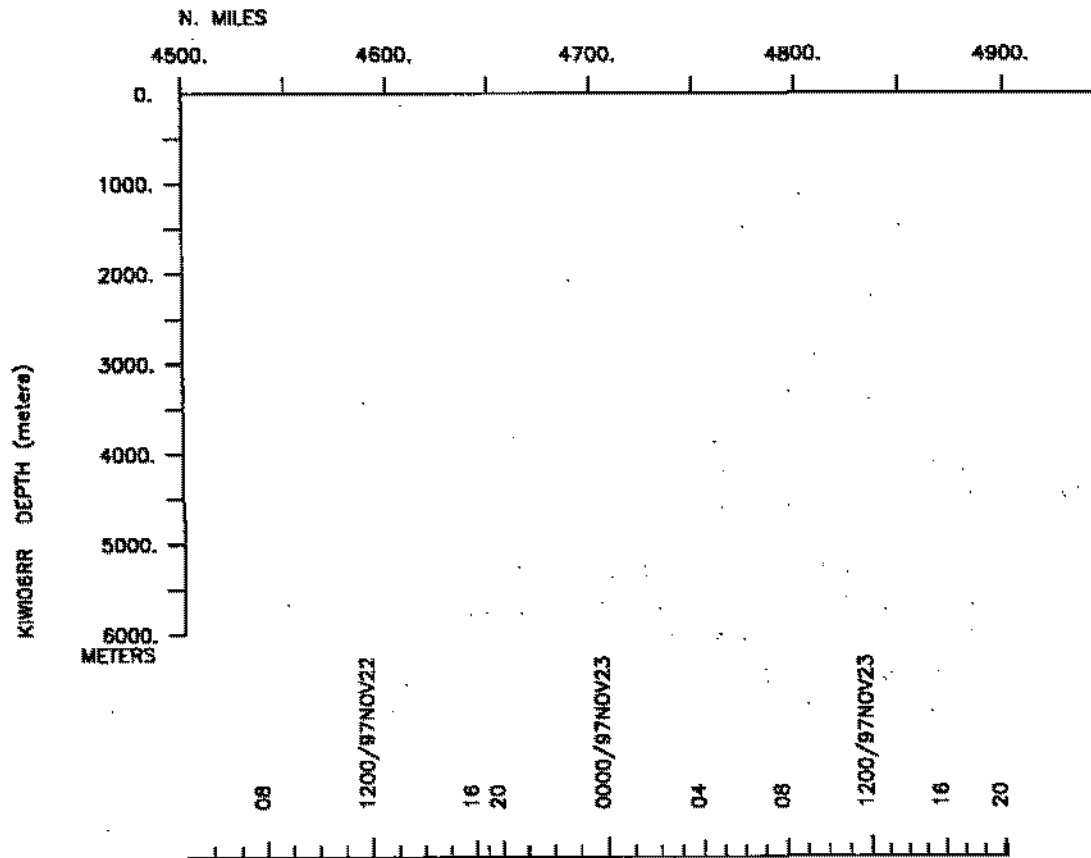
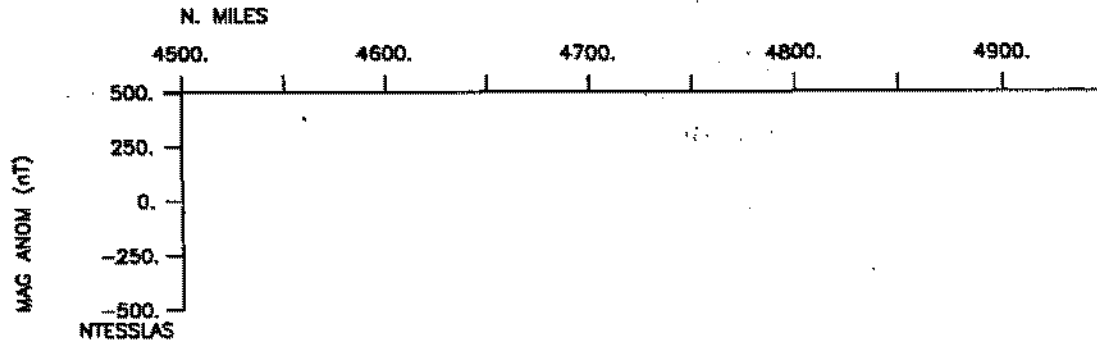
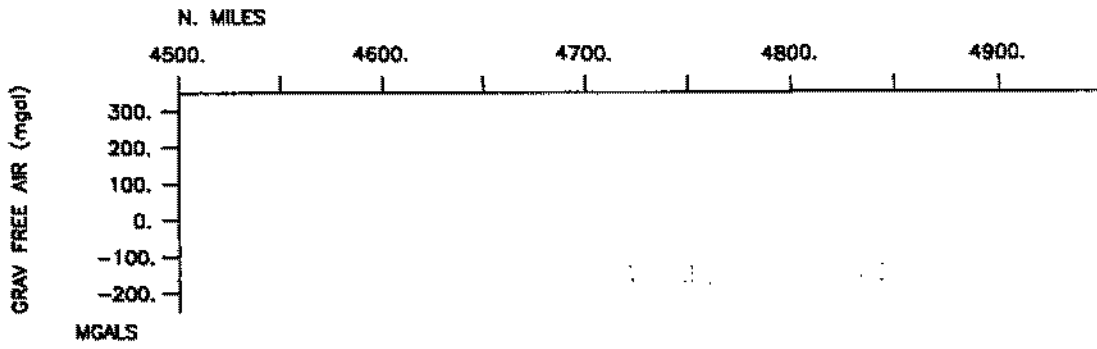








16 20 0000/97NOV21 04 08 1200/97NOV21 16 20 0000/97NOV22 04



S.I.O. SAMPLE INDEX

KIWI EXPEDITION

LEG 6

(KIWI06RR)

R/V Revelle

(Issued April 1998)

Ports:

Lyttleton, New Zealand (20 October 1997)

to

Lyttleton, New Zealand (24 November 1997)

Chief Scientist:

Tim Cowles, Oregon State University

The Sample Index is a first level interdisciplinary listing of time, position, sample identification and disposition of all samples, records and measurements collected on this cruise leg. The index data are encoded at sea by the resident marine technician and processed on shore by the S.I.O. Geological Data Center shortly after the completion of the cruise leg.

Positions are interpolated on the basis of sample time by comparison to a single, edited navigation file. Samples beginning at one time and position and ending at another are entered on two consecutive lines. Disposition and sample type are represented by three and four character codes to permit future computer searches on these parameters. (Listings defining these codes are available from the Geological Data Center.)

GDC Cruise I.D.# 276

**** Ports ****

1100 201097 0 LGPT B LYTTLETON, NEW ZEALAND 43-36.00S 172-43.00E f KIWI06RR
 0001 241197 0 LGPT E LYTTLETON, NEW ZEALAND 43-36.00S 172-43.00E f KIWI06RR

**** Personnel ****

#	*****NAME*****	*****TITLE*****	*****AFFILIATION*****	**CRID**
PECS OSU	Cowles, T	Chief Scientist	Oregon State Univ.	KIWI06RR
PESP OSU	Abbott, M	Scientist	Oregon State Univ.	KIWI06RR
PESP WHOI	Ball, L	Technician	Woods Hole	KIWI06RR
PESP OSU	Barth, J	Graduate student	Oregon State Univ.	KIWI06RR
PESP UHI	Brown, S	Graduate student	Univ. of Hawaii	KIWI06RR
PESP SIX	Coale, K	Scientist	Moss Marine Lab.	KIWI06RR
PESP SIX	Cook, M	Technician	North Carolilna St.	KIWI06RR
PESP WHOI	Crossin, G	Technician	Woods Hole	KIWI06RR
PESP SIO	Cascotti, K	Graduate student	Scripps Institution	KIWI06RR
PESP UMI	Degler, E	Graduate student	University of Miami	KIWI06RR
PESP OSU	Fayler, L	Scientist	Oregon State Univ.	KIWI06RR
PEST UCSB	Franck, V	Scientist	UC Santa Barbara	KIWI06RR
PESP SIX	Gordon, M	Research assoc.	Moss Marine Lab.	KIWI06RR
PESP WHOI	Goyet, C	Scientist	Woods Hole	KIWI06RR
PESP SIO	Gonzales, A	Scientist	Scripps Institution	KIWI06RR
PESP WHOI	Kirchlechner, T	Sciencsit	Woods Hole	KIWI06RR
PESP UHI	Landry, M	Scientist	Univ. of Hawaii	KIWI06RR
PESP SIO	Morgan, Stacey	Research asso.	Scripps Institution	KIWI06RR
PECT UHI	Mcdonough, K	Research assist.	Univ. of Hawaii	KIWI06RR
PESP OSU	O'Malley, R	Research assist.	Oregon State Univ.	KIWI06RR
PESP OSU	Pierce, S	Research assist.	Oregon State Univ.	KIWI06RR
PESP SIX	Polk, S	Research assist.	Univ. of Tennessee	KIWI06RR
PESP OSU	Richman, J	Scientist	Oregon State Univ.	KIWI06RR
PESP OSU	Root, D	Technician	Oregon State Univ.	KIWI06RR
PESP NOAA	Mordy, C	Technician	Nat. Ocean&Atmos Ad	KIWI06RR
PERT SIX	Stillman, S	Resident assist.	Univ. of Mass.	KIWI06RR
PEST SIX	Tanner, S	Research tech.	Moss Marine Lab.	KIWI06RR
PESP UHI	Vink, S	Scientist	Univ. of Hawaii	KIWI06RR
PESP SIO	Williams, Robert	Technician	Scripps Institution	KIWI06RR
PESP OSU	Wingard, C	Technician	Oregon State Univ.	KIWI06RR
PESP OSU	Willis, M	Chief Technician	Oregon State Univ.	KIWI06RR
PESP UMI	Zhu, X	Scientist	University of Miami	KIWI06RR
PEST SIX	Kulak, B	Scientist	Smithsonian	KIWI06RR
PEST SIX	Meadows, J.	Scientist	Duke University	KIWI06RR
PESP SIO	Wilson, Robert	Resident tech.	Scripps Institution	KIWI06RR
PESP SIO	Silver, Marc	Computer tech.	Scripps Institution	KIWI06RR
PESP UWA	Realander, M	CTD Technician	Univ. of Washington	KIWI06RR

**** NOTES ****

#An 'X' in the (B)egin/(E)nd column following the sample code indicates no
 #sample or data recovered. A 'C' indicates continuation of data collection
 #from before the beginning or after the end of a particular leg. (Moored
 #bottom instruments, for example.) The number appearing in the columns
 #between the sample identifier and the disposition code, for many sample
 #entries, is the water depth in corrected meters.

#GMT	DDMMYY	SAMP	B	SAMPLE	DISP				p	CRUISE
#TIME	DATE	TZ	CODE	E IDENTIFIER	CODE	LATITUDE	LONGITUDE		c	LEG-SHIP
#	-----			-----	-----	-----	-----		-----	-----
*** Underway Data Curator - S. M. Smith ext. 42752 ***										
*** Log Books ***										
1100	201097	0	LBSC	B ODF Ops log	SIO	44-31.08S	174-11.73E	g		KIWI06RR
2355	241197	0	LBSC	E ODF Ops log	SIO	43-36.36S	172-43.38E	g		KIWI06RR
1100	201097	0	LBSC	B JGOFS So.Ocean log	OSU	44-31.08S	174-11.73E	g		KIWI06RR
2355	241197	0	LBSC	E JGOFS So.Ocean log	OSU	43-36.36S	172-43.38E	g		KIWI06RR
1100	201097	0	LBSC	B Organic carbon log	WHOI	44-31.08S	174-11.73E	g		KIWI06RR
2355	241197	0	LBSC	E Organic carbon log	WHOI	43-36.36S	172-43.38E	g		KIWI06RR
0103	251097	0	LBSC	B Seasoar log book	OSU	57-00.16S	169-59.60W	g		KIWI06RR
0913	191197	0	LBSC	E Seasoar log book	OSU	60-11.88S	167-36.78W	g		KIWI06RR
*** Sea Beam Records (vertical beam and side scan) ***										
*** Digital SeaBeam data only. No analog records were collected on this leg. *										
1145	231297	0	MBSR	B SeaBeam data	GDC	43-36.36S	172-43.38E	g		KIWI06RR
0145	020198	0	MBSR	E SeaBeam data	GDC	43-36.36S	172-43.38E	g		KIWI06RR
*** Echo Sounder - 3.5 kHz ***										
1200	201097	0	DPR3	B 3.5khz PDR r-01	GDC	44-40.85S	174-22.33E	g		KIWI06RR
1945	221197	0	DPR3	E 3.5khz PDR r-01	GDC	46-39.34S	176-15.45E	g		KIWI06RR
*** Continuous Sample for Metals (Wee Fish) ***										
2225	251097	0	CSXX	B metals sampling	UHI	58-01.98S	169-59.23W	g		KIWI06RR
1600	271097	0	CSXX	E metals sampling	UHI	62-21.22S	169-54.63W	g		KIWI06RR
1437	071197	0	CSXX	B metals sampling	UHI	59-57.48S	171-54.85W	g		KIWI06RR
1700	121197	0	CSXX	E metals sampling	UHI	60-50.49S	168-26.96W	g		KIWI06RR
1200	151197	0	CSXX	B metals sampling	UHI	61-00.31S	170-09.29W	g		KIWI06RR
1735	171197	0	CSXX	E metals sampling	UHI	60-49.15S	168-05.45W	g		KIWI06RR
1913	181197	0	CSXX	B metals sampling	UHI	60-43.50S	168-00.32W	g		KIWI06RR
0905	191197	0	CSXX	E metals sampling	UHI	60-12.05S	167-36.49W	g		KIWI06RR
*** Current Meter Plus Radiometer ***										
*** Moorings to be recovered by RVIB Palmer ***										
2132	291097	0	CMAB	B mooring radiometer 1	OSU	60-59.09S	170-00.80W	g		KIWI06RR
0001	241197	0	CMAB	C mooring radiometer 1	OSU	43-36.36S	172-43.38E	g		KIWI06RR
1132	291097	0	CMAB	B mooring radiometer 9	OSU	60-58.71S	169-59.80W	g		KIWI06RR
0001	241197	0	CMAB	C mooring radiometer 9	OSU	43-36.36S	172-43.38E	g		KIWI06RR
0036	311097	0	CMAB	B mooring radiometer 2	OSU	60-39.45S	170-01.39W	g		KIWI06RR
0001	241197	0	CMAB	C mooring radiometer 2	OSU	43-36.36S	172-43.38E	g		KIWI06RR
1258	311097	0	CMAB	B mooring radiometer 5	OSU	60-49.57S	169-31.58W	g		KIWI06RR
0001	241197	0	CMAB	C mooring radiometer 5	OSU	43-36.36S	172-43.38E	g		KIWI06RR
0145	021097	0	CMAB	B mooring radiometer 8	OSU	43-36.40S	172-43.18E	g		KIWI06RR
0001	241197	0	CMAB	C mooring radiometer 8	OSU	43-36.36S	172-43.38E	g		KIWI06RR
1143	031097	0	CMAB	B mooring radiometer 7	OSU	43-36.40S	172-43.18E	g		KIWI06RR
0001	241197	0	CMAB	C mooring radiometer 7	OSU	43-36.36S	172-43.38E	g		KIWI06RR

1643	031097	0	CMAB	B	mooring radiometer	6	OSU	43-36.40S	172-43.18E	g	KIWI06RR
0001	241197	0	CMAB	C	mooring radiometer	6	OSU	43-36.36S	172-43.38E	g	KIWI06RR
2301	051097	0	CMAB	B	mooring radiometer	4	OSU	43-36.40S	172-43.18E	g	KIWI06RR
0001	241197	0	CMAB	C	mooring radiometer	4	OSU	43-36.36S	172-43.38E	g	KIWI06RR
1115	061097	0	CMAB	B	mooring radiometer	3	OSU	43-36.40S	172-43.18E	g	KIWI06RR
0001	241197	0	CMAB	C	mooring radiometer	3	OSU	43-36.36S	172-43.38E	g	KIWI06RR
0808	131097	0	CMAB	B	mooring radiometer	11	OSU	43-36.40S	172-43.18E	g	KIWI06RR
0001	241197	0	CMAB	C	mooring radiometer	11	OSU	43-36.36S	172-43.38E	g	KIWI06RR
2012	141097	0	CMAB	B	mooring radiometer	10	OSU	43-36.40S	172-43.18E	g	KIWI06RR
0001	241197	0	CMAB	C	mooring radiometer	10	OSU	43-36.36S	172-43.38E	g	KIWI06RR
0531	151097	0	CMAB	B	mooring radiometer	12	OSU	43-36.40S	172-43.18E	g	KIWI06RR
0001	241197	0	CMAB	C	mooring radiometer	12	OSU	43-36.36S	172-43.38E	g	KIWI06RR

**** Thorium Pumps ****

0130	241097	0	PCXX	B	Thorium Pumps		WHOI	57-00.07S	169-59.86W	g	KIWI06RR
0518	241097	0	PCXX	E	Thorium pumps		WHOI	57-00.09S	169-59.89W	g	KIWI06RR
0533	281097	0	PCXX	B	Thorium Pumps		WHOI	62-19.03S	170-00.13W	g	KIWI06RR
0908	281097	0	PCXX	E	Thorium pumps		WHOI	62-19.03S	170-00.14W	g	KIWI06RR
0400	011197	0	PCXX	B	Thorium Pumps		WHOI	60-30.00S	169-00.01W	g	KIWI06RR
0725	011197	0	PCXX	E	Thorium pumps		WHOI	60-30.00S	169-00.01W	g	KIWI06RR
1755	041197	0	PCXX	B	Thorium Pumps		WHOI	59-20.01S	170-00.00W	g	KIWI06RR
2118	041197	0	PCXX	E	Thorium pumps		WHOI	59-20.02S	169-59.98W	g	KIWI06RR
0748	141197	0	PCXX	B	Thorium Pumps		WHOI	60-14.12S	170-41.57W	g	KIWI06RR
1136	141197	0	PCXX	E	Thorium pumps		WHOI	60-14.12S	170-41.57W	g	KIWI06RR
0502	181197	0	PCXX	B	Thorium Pumps		WHOI	60-46.60S	168-11.53W	g	KIWI06RR
0800	181197	0	PCXX	E	Thorium pumps		WHOI	60-46.60S	168-11.52W	g	KIWI06RR

**** SeaSoar Tows ****

2130	251097	0	TDXX	B	Seasoar tow #1		OSU	58-00.21S	169-59.89W	g	KIWI06RR
1735	271097	0	TDXX	E	Seasoar tow #1		OSU	62-22.35S	169-42.21W	g	KIWI06RR
1429	071197	0	TDXX	B	Seasoar tow #2		OSU	59-57.49S	171-54.43W	g	KIWI06RR
1710	121197	0	TDXX	E	Seasoar tow #2		OSU	60-50.80S	168-26.34W	g	KIWI06RR
1142	151197	0	TDXX	B	Seasoar tow #3		OSU	60-59.55S	170-09.56W	g	KIWI06RR
1730	171197	0	TDXX	E	Seasoar tow #3		OSU	60-49.36S	168-05.92W	g	KIWI06RR
1811	181197	0	TDXX	B	Seasoar tow #4		OSU	60-47.44S	168-00.04W	g	KIWI06RR
0913	191197	0	TDXX	E	Seasoar tow #4		OSU	60-11.88S	167-36.78W	g	KIWI06RR

**** Hydrocasts - Go Flow Trace Metals ****

**** HCGF Samples belong to Moss Landing Marine Lab ****

1800	231097	0	HCGF		I		SIX	57-00.08S	169-59.83W	g	KIWI06RR
0720	241097	0	HCGF		I		SIX	57-00.07S	169-59.86W	g	KIWI06RR
0150	251097	0	HCGF		I		SIX	57-00.16S	169-59.59W	g	KIWI06RR
0252	251097	0	HCGF		I		SIX	57-00.16S	169-59.60W	g	KIWI06RR
2026	271097	0	HCGF		I		SIX	62-19.05S	170-00.15W	g	KIWI06RR
0015	281097	0	HCGF		I		SIX	62-19.02S	170-00.12W	g	KIWI06RR
0220	281097	0	HCGF		I		SIX	62-19.02S	170-00.13W	g	KIWI06RR
0425	281097	0	HCGF		I		SIX	62-19.03S	170-00.12W	g	KIWI06RR
1812	281097	0	HCGF		I		SIX	62-20.45S	170-00.98W	g	KIWI06RR
2300	281097	0	HCGF		I		SIX	62-20.45S	170-00.97W	g	KIWI06RR
1620	311097	0	HCGF		I		SIX	60-30.00S	169-00.02W	g	KIWI06RR

1900	311097	0	HCGF	I	SIX	60-30.00S	169-00.03W	g	KIWI06RR
0125	011197	0	HCGF	I	SIX	60-30.00S	169-00.00W	g	KIWI06RR
0734	011197	0	HCGF	I	SIX	60-30.00S	169-00.01W	g	KIWI06RR
0600	041197	0	HCGF	I	SIX	59-19.99S	169-59.98W	g	KIWI06RR
1430	041197	0	HCGF	I	SIX	59-19.96S	169-59.96W	g	KIWI06RR
2350	041197	0	HCGF	I	SIX	59-19.96S	170-00.01W	g	KIWI06RR
0530	051197	0	HCGF	I	SIX	59-18.83S	170-08.60W	g	KIWI06RR
1530	131197	0	HCGF	I	SIX	60-14.12S	170-41.57W	g	KIWI06RR
0150	141197	0	HCGF	I	SIX	60-14.15S	170-41.57W	g	KIWI06RR
0430	141197	0	HCGF	I	SIX	60-14.12S	170-41.57W	g	KIWI06RR
2150	171197	0	HCGF	I	SIX	60-45.95S	168-09.52W	g	KIWI06RR
0210	181197	0	HCGF	I	SIX	60-45.96S	168-09.51W	g	KIWI06RR
0440	181197	0	HCGF	I	SIX	60-46.60S	168-11.52W	g	KIWI06RR
1400	181197	0	HCGF	I	SIX	60-49.66S	168-17.68W	g	KIWI06RR

#*** Open Nets ***

1000	281097	0	ONBG	B	Mochness	MBRD	62-19.29S	170-00.38W	g	KIWI06RR
1150	281097	0	ONBG	E	Mochness	MBRD	62-22.24S	170-05.33W	g	KIWI06RR
0908	011197	0	ONBG	B	Mochness	MBRD	60-30.01S	168-59.88W	g	KIWI06RR
1117	011197	0	ONBG	E	Mochness	MBRD	60-32.59S	169-09.06W	g	KIWI06RR
1320	011197	0	ON1M	B	Live tow	MBRD	60-30.11S	168-59.74W	g	KIWI06RR
1343	011197	0	ON1M	E	Live tow	MBRD	60-30.10S	168-59.75W	g	KIWI06RR
0845	041197	0	ONBG	B	Mochness	MBRD	59-20.14S	169-59.67W	g	KIWI06RR
1040	041197	0	ONBG	E	Mochness	MBRD	59-17.03S	170-05.23W	g	KIWI06RR
1220	041197	0	ON1M	B	Live tow	MBRD	59-16.87S	170-05.47W	g	KIWI06RR
1240	041197	0	ON1M	E	Live tow	MBRD	59-16.86S	170-05.47W	g	KIWI06RR
0925	131197	0	ONBG	B	Mochness	MBRD	60-14.99S	170-29.79W	g	KIWI06RR
1145	131197	0	ONBG	E	Mochness	MBRD	60-14.14S	170-41.24W	g	KIWI06RR
1250	131197	0	ON1M	B	Live tow	MBRD	60-14.12S	170-41.57W	g	KIWI06RR
1305	131197	0	ON1M	E	Live tow	MBRD	60-14.12S	170-41.57W	g	KIWI06RR
0935	181197	0	ONBG	B	Mochness	MBRD	60-46.66S	168-11.61W	g	KIWI06RR
1135	181197	0	ONBG	E	Mochness	MBRD	60-49.66S	168-17.68W	g	KIWI06RR
1220	181197	0	ON1M	B	Live tow	MBRD	60-49.66S	168-17.69W	g	KIWI06RR
1240	181197	0	ON1M	E	Live tow	MBRD	60-49.66S	168-17.68W	g	KIWI06RR

#*** Conductivity, Temperature, Depth ***

1613	231097	0	TDCT	TSONIC	24	250M	OSU	57-00.08S	169-59.85W	g	KIWI06RR
0500	251097	0	TDCT	TSONIC	24	2000M	OSU	57-00.01S	169-59.99W	g	KIWI06RR
1542	251097	0	TDCT	TSONIC	24	2000M	OSU	58-00.00S	170-00.00W	g	KIWI06RR
2200	271097	0	TDCT	TSONIC	24	2000M	OSU	62-19.04S	170-00.15W	g	KIWI06RR
0141	291097	0	TDCT	TSONIC	24	2000M	OSU	62-20.46S	170-00.97W	g	KIWI06RR
1355	291097	0	TDCT	TSONIC	24	3330M	OSU	60-59.10S	170-00.60W	g	KIWI06RR
0414	301097	0	TDCT	TSONIC	24	3470M	OSU	60-50.69S	170-31.65W	g	KIWI06RR
1632	301097	0	TDCT	TSONIC	24	4000M	OSU	60-39.76S	170-00.59W	g	KIWI06RR
0510	311097	0	TDCT	TSONIC	24	3800M	OSU	60-49.60S	169-31.00W	g	KIWI06RR
1830	311097	0	TDCT	TSONIC	24	500M	OSU	60-30.01S	168-59.97W	g	KIWI06RR
1756	011197	0	TDCT	TSONIC	24	4000M	OSU	60-28.10S	168-57.30W	g	KIWI06RR
0539	021197	0	TDCT	TSONIC	24	3500M	OSU	60-31.20S	169-28.46W	g	KIWI06RR
0400	031197	0	TDCT	TSONIC	24	4500M	OSU	60-11.79S	169-30.31W	g	KIWI06RR
0330	041197	0	TDCT	TSONIC	24	500M	OSU	59-19.97S	169-59.91W	g	KIWI06RR
1155	051197	0	TDCT	TSONIC	24	4500M	OSU	59-46.25S	170-01.83W	g	KIWI06RR
0349	061197	0	TDCT	TSONIC	24	4000M	OSU	60-20.18S	170-00.55W	g	KIWI06RR
0230	071197	0	TDCT	TSONIC	24		OSU	60-15.58S	170-27.25W	g	KIWI06RR
1030	071197	0	TDCT	TSONIC	24	500M	OSU	59-57.50S	171-54.00W	g	KIWI06RR
1730	121197	0	TDCT	TSONIC	24	500M	OSU	60-50.85S	168-26.15W	g	KIWI06RR
0107	131197	0	TDCT	TSONIC	24	3850M	OSU	60-15.60S	170-27.30W	g	KIWI06RR
1949	131197	0	TDCT	TSONIC	24	200M	OSU	60-14.13S	170-41.57W	g	KIWI06RR

2252	131197	0	TDCT	TSONIC	24	250M OSU	60-14.12S	170-41.57W	g	KIWI06RR
0056	141197	0	TDCT	TSONIC	24	56M OSU	60-14.10S	170-41.59W	g	KIWI06RR
0310	141197	0	TDCT	TSONIC	24	100M OSU	60-14.12S	170-41.57W	g	KIWI06RR
0612	141197	0	TDCT	TSONIC	24	500M OSU	60-14.12S	170-41.56W	g	KIWI06RR
1406	141197	0	TDCT	TSONIC	24	3600M OSU	60-31.19S	170-30.60W	g	KIWI06RR
2317	141197	0	TDCT	TSONIC	24	3650M OSU	60-29.09S	171-03.50W	g	KIWI06RR
0939	151197	0	TDCT	TSONIC	24	500M OSU	61-00.00S	170-06.00W	g	KIWI06RR
1830	171197	0	TDCT	TSONIC	24	500M OSU	60-48.42S	168-03.74W	g	KIWI06RR
2037	171197	0	TDCT	TSONIC	24	500M OSU	60-45.95S	168-09.52W	g	KIWI06RR
0007	181197	0	TDCT	TSONIC	24	250M OSU	60-45.96S	168-09.51W	g	KIWI06RR
0323	181197	0	TDCT	TSONIC	24	100M OSU	60-45.96S	168-09.51W	g	KIWI06RR
1312	181197	0	TDCT	TSONIC	24	250M OSU	60-49.66S	168-17.68W	g	KIWI06RR
1510	181197	0	TDCT	TSONIC	24	2000M OSU	60-49.66S	168-17.69W	g	KIWI06RR

*** CTDs - Trace Metal Rosettes ***

*** TDXX belongs to Moss Landing Marine Lab ***

0017	241097	0	TDXX	Tr.metal rosette150M	SIX	57-00.08S	169-59.86W	g	KIWI06RR
0600	241097	0	TDXX	Tr.metal rosette150M	SIX	57-00.08S	170-00.00W	g	KIWI06RR
1456	281097	0	TDXX	Tr.metal rosette150M	SIX	62-21.95S	170-04.59W	g	KIWI06RR
2202	281097	0	TDXX	Tr.metal rosette150M	SIX	62-20.45S	170-00.96W	g	KIWI06RR
2353	311097	0	TDXX	Tr.metal rosette150M	SIX	60-30.00S	169-00.02W	g	KIWI06RR
0316	011197	0	TDXX	Tr.metal rosette150M	SIX	60-30.00S	168-59.97W	g	KIWI06RR
1404	011197	0	TDXX	Tr.metal rosette150M	SIX	60-29.99S	168-59.99W	g	KIWI06RR
1439	041197	0	TDXX	Tr.metal rosette150M	SIX	59-20.00S	170-00.00W	g	KIWI06RR
2319	041197	0	TDXX	Tr.metal rosette150M	SIX	59-19.97S	170-00.03W	g	KIWI06RR

*** Radiometers - Tethered ***

1938	231097	0	ACXX	B Tethered radiometer	OSU	57-00.07S	169-59.87W	g	KIWI06RR
2006	231097	0	ACXX	E Tethered radiometer	OSU	57-00.07S	169-59.87W	g	KIWI06RR
0106	241097	0	ACXX	B Tethered radiometer	OSU	57-00.07S	169-59.87W	g	KIWI06RR
0247	241097	0	ACXX	E Tethered radiometer	OSU	57-00.09S	169-59.86W	g	KIWI06RR
2026	281097	0	ACXX	B Tethered radiometer	OSU	62-20.44S	170-00.99W	g	KIWI06RR
2110	281097	0	ACXX	E Tethered radiometer	OSU	62-20.45S	170-00.97W	g	KIWI06RR
2318	281097	0	ACXX	B Tethered radiometer	OSU	62-20.45S	170-00.97W	g	KIWI06RR
0012	291097	0	ACXX	E Tethered radiometer	OSU	62-20.45S	170-00.97W	g	KIWI06RR
2318	131197	0	ACXX	B Tethered radiometer	OSU	60-14.12S	170-41.57W	g	KIWI06RR
0014	141197	0	ACXX	E Tethered radiometer	OSU	60-14.07S	170-41.55W	g	KIWI06RR
2334	171197	0	ACXX	B Tethered radiometer	OSU	60-45.96S	168-09.51W	g	KIWI06RR
0031	181197	0	ACXX	E Tethered radiometer	OSU	60-45.96S	168-09.52W	g	KIWI06RR

*** Radiometers - Drifters ***

1308	081197	0	ACXX	Drifting radiometers	OSU	61-02.14S	171-29.96W	g	KIWI06RR
1346	081197	0	ACXX	Drifting radiometers	OSU	60-57.90S	171-32.60W	g	KIWI06RR
1423	081197	0	ACXX	Drifting radiometers	OSU	60-53.73S	171-32.46W	g	KIWI06RR
1514	081197	0	ACXX	Drifting radiometers	OSU	60-49.56S	171-27.54W	g	KIWI06RR
1545	081197	0	ACXX	Drifting radiometers	OSU	60-45.94S	171-28.82W	g	KIWI06RR
1620	081197	0	ACXX	Drifting radiometers	OSU	60-41.85S	171-30.07W	g	KIWI06RR
0534	091197	0	ACXX	Drifting radiometers	OSU	60-45.98S	171-05.85W	g	KIWI06RR
0611	091197	0	ACXX	Drifting radiometers	OSU	60-50.43S	171-05.91W	g	KIWI06RR
0814	091197	0	ACXX	Drifting radiometers	OSU	61-02.45S	170-57.99W	g	KIWI06RR
0855	091197	0	ACXX	Drifting radiometers	OSU	61-06.27S	171-03.60W	g	KIWI06RR
1253	151197	0	ACXX	Drifting radiometers	OSU	60-56.86S	170-06.00W	g	KIWI06RR
1311	151197	0	ACXX	Drifting radiometers	OSU	60-54.89S	170-05.99W	g	KIWI06RR
1330	151197	0	ACXX	Drifting radiometers	OSU	60-52.79S	170-05.95W	g	KIWI06RR
1347	151197	0	ACXX	Drifting radiometers	OSU	60-50.79S	170-06.04W	g	KIWI06RR
1403	151197	0	ACXX	Drifting radiometers	OSU	60-48.88S	170-06.09W	g	KIWI06RR
0646	161197	0	ACXX	Drifting radiometers	OSU	60-33.90S	169-18.03W	g	KIWI06RR
0653	161197	0	ACXX	Drifting radiometers	OSU	60-34.73S	169-17.92W	g	KIWI06RR
0702	161197	0	ACXX	Drifting radiometers	OSU	60-35.80S	169-17.79W	g	KIWI06RR

0711 161197 0 ACXX Drifting radiometers OSU 60-36.84S 169-17.67W g KIWI06RR
0719 161197 0 ACXX Drifting radiometers OSU 60-37.79S 169-17.72W g KIWI06RR

*** Submerged Optical Profiler on CTD ***

2046 281097 0 TDXX B Optical Profiler OSU 62-20.46S 170-00.96W g KIWI06RR
2117 281097 0 TDXX E Optical Profiler OSU 62-20.46S 170-00.97W g KIWI06RR
2009 311097 0 TDXX B Optical Profiler OSU 60-30.00S 168-59.95W g KIWI06RR
2039 311097 0 TDXX E Optical Profiler OSU 60-30.00S 169-00.00W g KIWI06RR
0803 041197 0 TDXX B Optical Profiler OSU 59-20.00S 169-60.00W g KIWI06RR
0825 041197 0 TDXX E Optical Profiler OSU 59-20.01S 170-00.01W g KIWI06RR
2144 041197 0 TDXX B Optical Profiler OSU 59-20.02S 169-59.99W g KIWI06RR
2200 041197 0 TDXX E Optical Profiler OSU 59-20.01S 169-59.99W g KIWI06RR
2145 131197 0 TDXX B Optical Profiler OSU 60-14.11S 170-41.57W g KIWI06RR
2200 131197 0 TDXX E Optical Profiler OSU 60-14.12S 170-41.57W g KIWI06RR
0830 181197 0 TDXX B Optical Profiler OSU 60-46.60S 168-11.52W g KIWI06RR
0903 181197 0 TDXX E Optical Profiler OSU 60-46.60S 168-11.52W g KIWI06RR